

V&V Reference Report

L2 ASCDS Version : 7.6.7.1

Observation 5768 - L2 Version 002
Chandra X-Ray Center

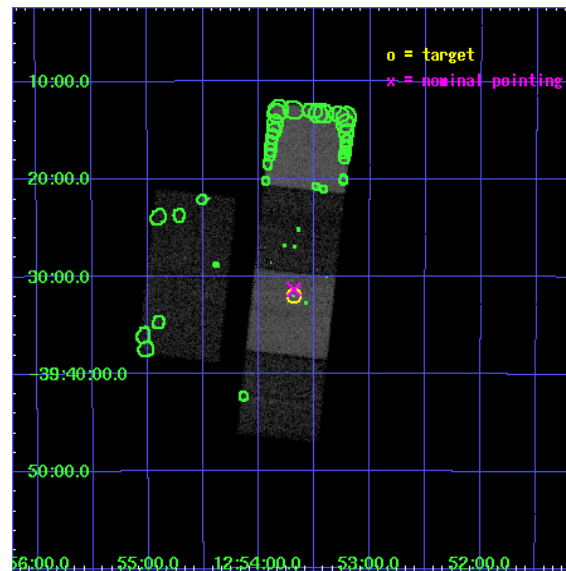
L2 Processing Date : Apr 10 2006

Contents

1	Front	2
2	OBI	3
2.1	OBI	3
2.1.1	Images	3
2.1.2	Bias	3
2.1.3	Parameters	4
2.1.4	Events	4
2.2	Compared Parameters	5
2.3	Aspect	6
2.4	Star Slots	9
2.4.1	Slot 3	9
2.4.2	Slot 4	10
2.4.3	Slot 5	11
2.4.4	Slot 6	12
2.4.5	Slot 7	13
2.5	FID Slots	14
2.5.1	Slot 0	14
2.5.2	Slot 1	15
2.5.3	Slot 2	16
3	Point Sources	17
A	Summary	18
A.1	Status	18
A.2	Comments	18

1 Front

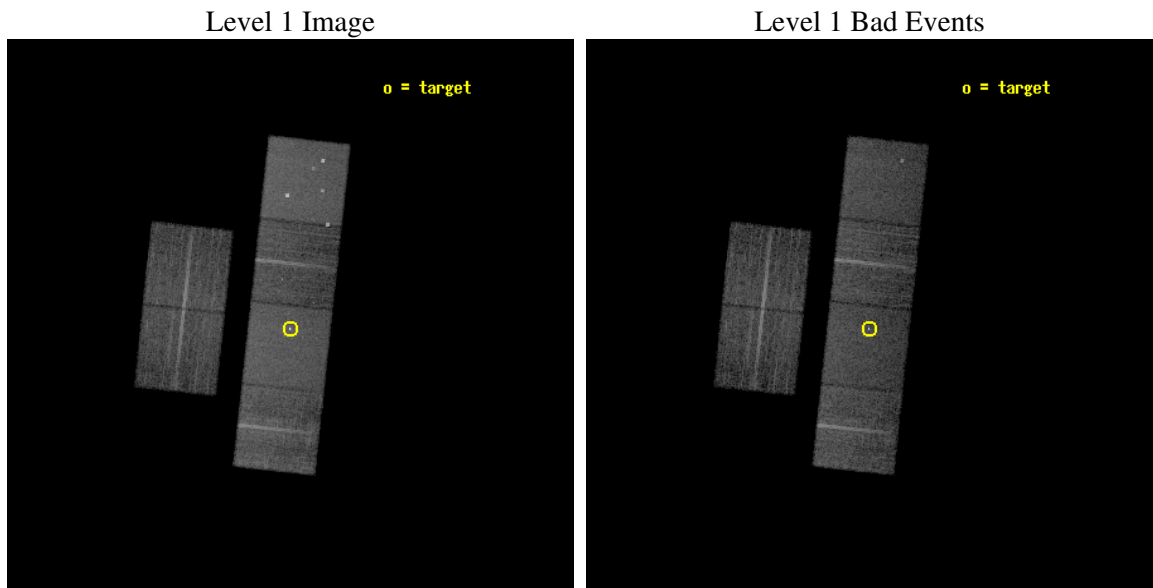
seq_num	800481
obs_id	5768
title	X-ray emission from clusters of galaxies from the REFLEX sample.
observer	Dr. Peter Predehl
object	RXCJ1253.6-3931
dtcycle	0
cycle	P
ra_targ	193.420417
dec_targ	-39.532
ra_nom	193.42125314373
dec_nom	-39.522336239825
roll_nom	96.212326045022
revision	2
ontime	9955.199962914
livetime	9829.1412266818
ontime2	9955.199962914
ontime3	9955.199962914
ontime5	9955.199962914
ontime6	9955.199962914
ontime7	9955.199962914
ontime8	9955.199962914
l2events	122770



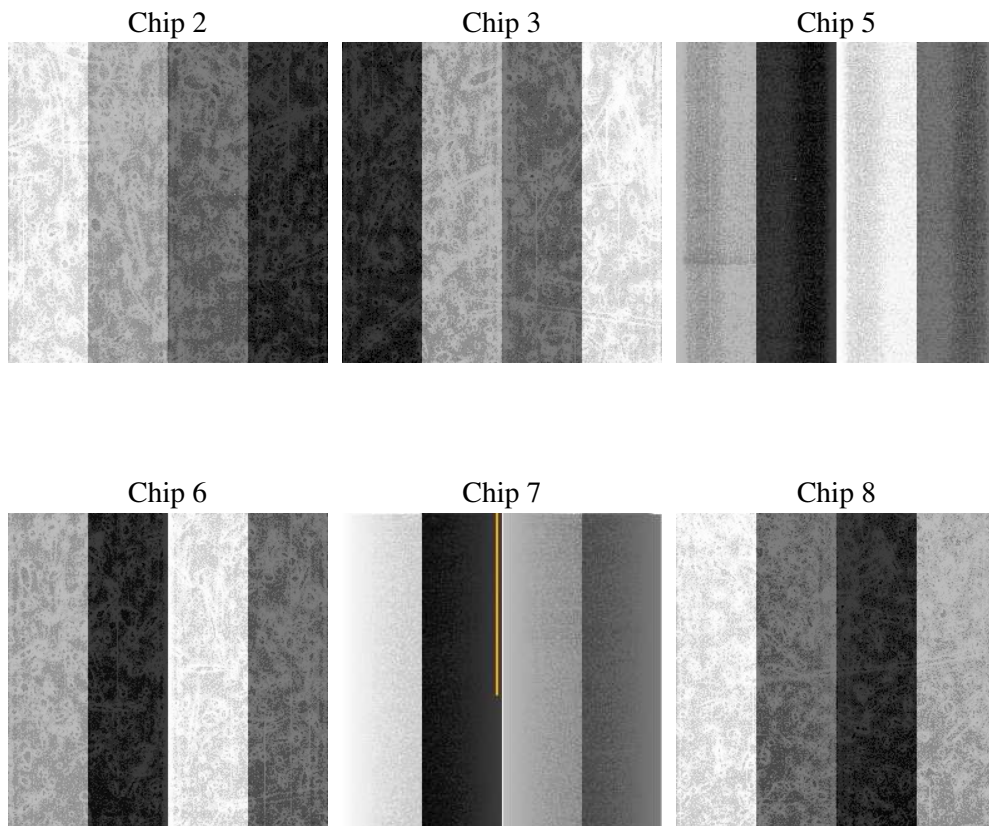
2 OBI

2.1 OBI

2.1.1 Images



2.1.2 Bias



2.1.3 Parameters

obi_num	0
ascdsver	7.6.7.1
caldbver	3.2.1
date	2006-04-10T22:24:43
revision	2

sched_exp_time	10000.000000
ontime	9962.8335781395
ontime2	9962.8335781395
ontime3	9962.8335781395
ontime5	9962.8335980177
ontime6	9962.8335781395
ontime7	9962.8335781395
ontime8	9962.8335781395
l1events	558639

2.1.4 Events

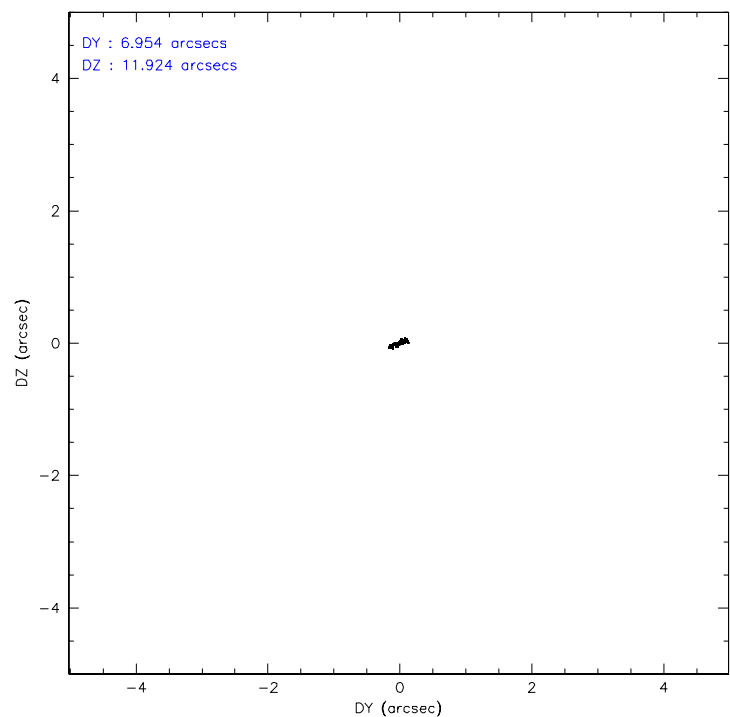
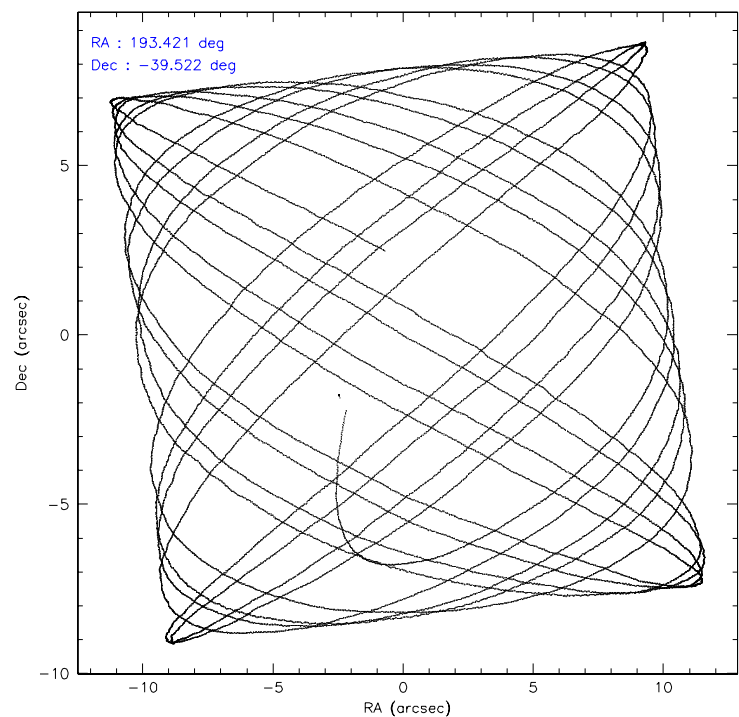
	ccd 2	ccd 3	ccd 5	ccd 6	ccd 7	ccd 8
level 1 events	77671	73476	120531	79184	108627	99150
rejected events	68391	64539	64735	69587	66156	77893
rejected %	88%	87%	53%	87%	60%	78%

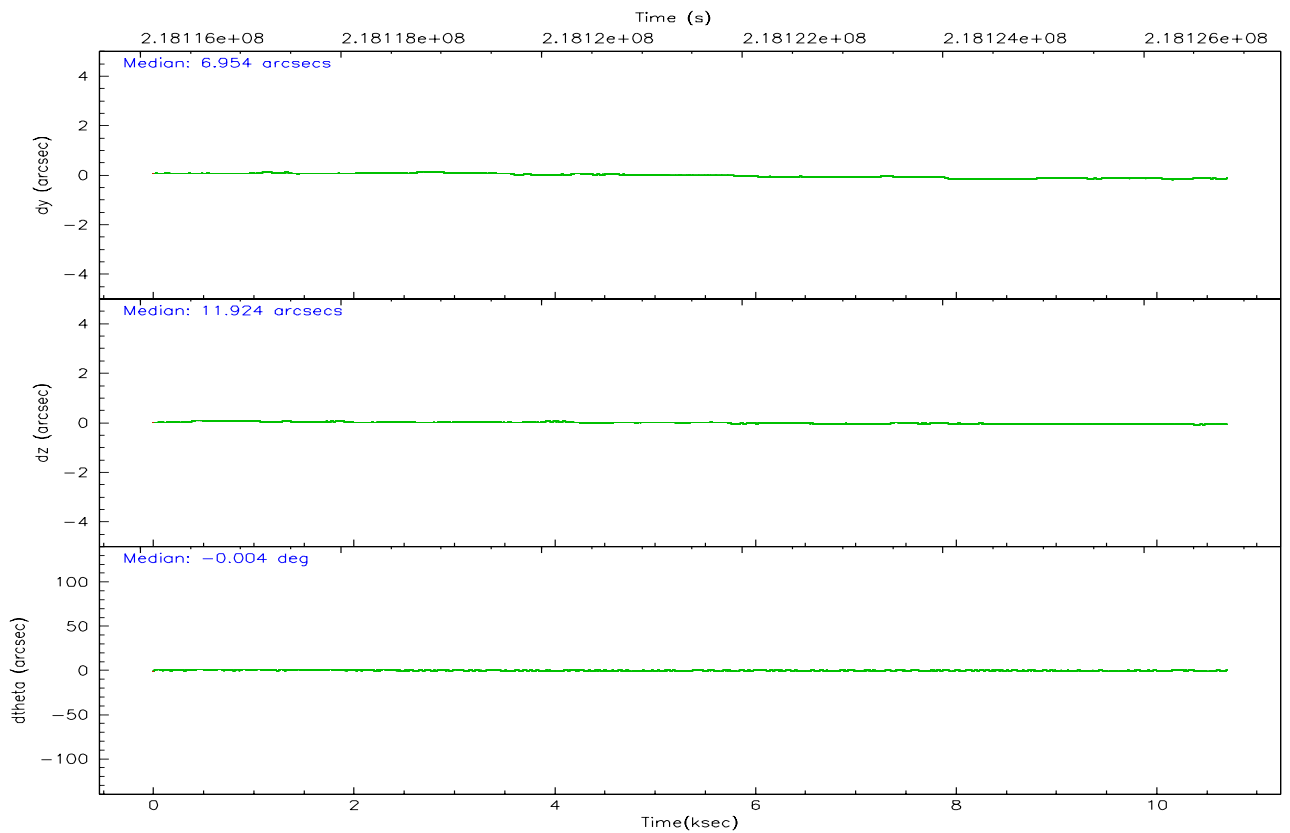
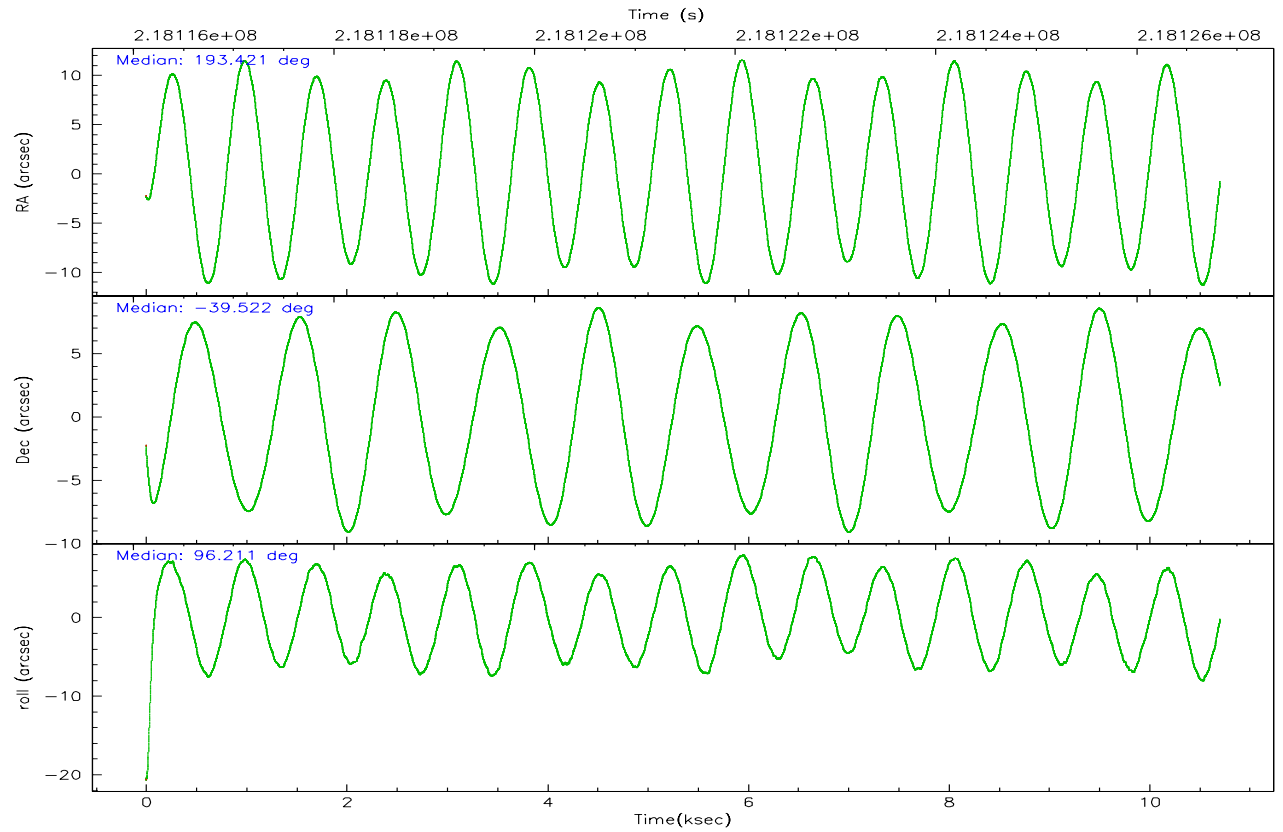
	ccd 2	ccd 3	ccd 5	ccd 6	ccd 7	ccd 8
grade 0 events	4119	3891	8100	3939	2676	6756
	5%	5%	6%	4%	2%	6%
grade 1 events	47	44	496	36	118	67
	0%	0%	0%	0%	0%	0%
grade 2 events	1935	1731	16363	1944	10478	4658
	2%	2%	13%	2%	9%	4%
grade 3 events	843	851	1147	996	2229	2277
	1%	1%	0%	1%	2%	2%
grade 4 events	866	871	1090	905	2124	2201
	1%	1%	0%	1%	1%	2%
grade 5 events	2832	3347	5551	3565	7413	4724
	3%	4%	4%	4%	6%	4%
grade 6 events	1523	1596	29129	1823	24991	5371
	1%	2%	24%	2%	23%	5%
grade 7 events	65506	61145	58655	65976	58598	73096
	84%	83%	48%	83%	53%	73%

2.2 Compared Parameters

Parameter	Planned	Actual	Parameter	Planned	Actual
Instrument	ACIS	ACIS	Obspar format version number	6	6
Detector	ACIS-235678	ACIS-235678	Obspar file type	PREDICTED	ACTUAL
Grating	NONE	NONE	Obspar update status	NONE	UPDATED
Data mode	FAINT	FAINT	On-chip summing requested	N	N
Observation mode	POINTING	POINTING	Subarray requested	NONE	NONE
Pointing RA	193.442508	193.4212531437321	Alternating exposures requested	N	N
Pointing Dec	-39.544104	-39.52233623982546	Primary exposure time	0.000000	3.2
Pointing Roll	96.069263	96.21232604502211			
SIM focus pos (mm)	-0.684267	-0.6828225247311905			
SIM defocus (mm)	0	0.001444936568705701			
SIM translation stage pos (mm)	-190.132523	-190.1400660498719			
SIM translation stage offset (mm)	0	0.00754346686406393			
Observation start time	218116831.184000	218115463.57305			
Observation start date	2004-11-29T11:59:27	2004-11-29T11:37:43			
Observation end time	218126831.184000	218128061.84861			
Observation end date	2004-11-29T14:46:07	2004-11-29T15:07:41			
Read mode	TIMED	TIMED			

2.3 Aspect



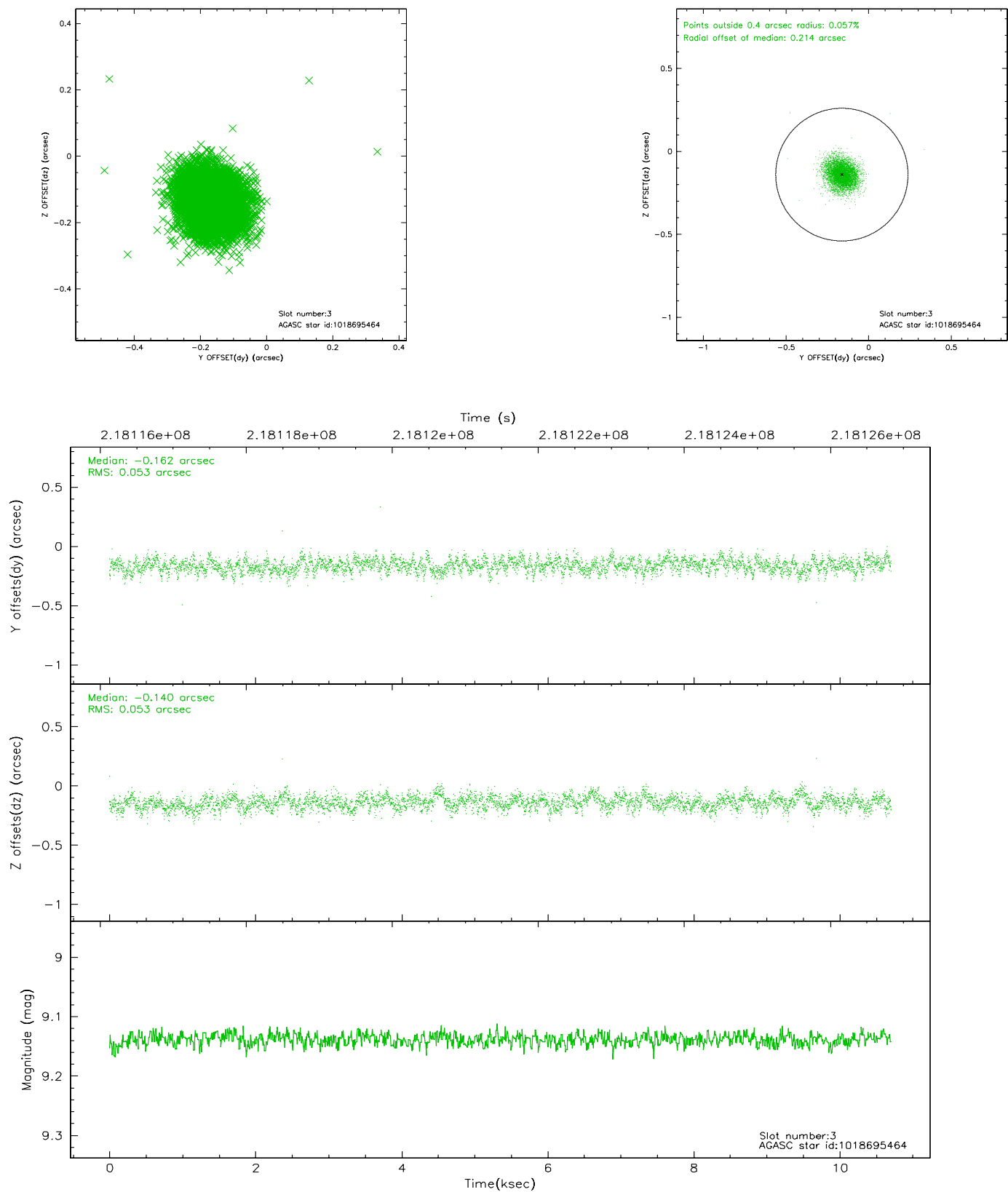


Slot Statistics

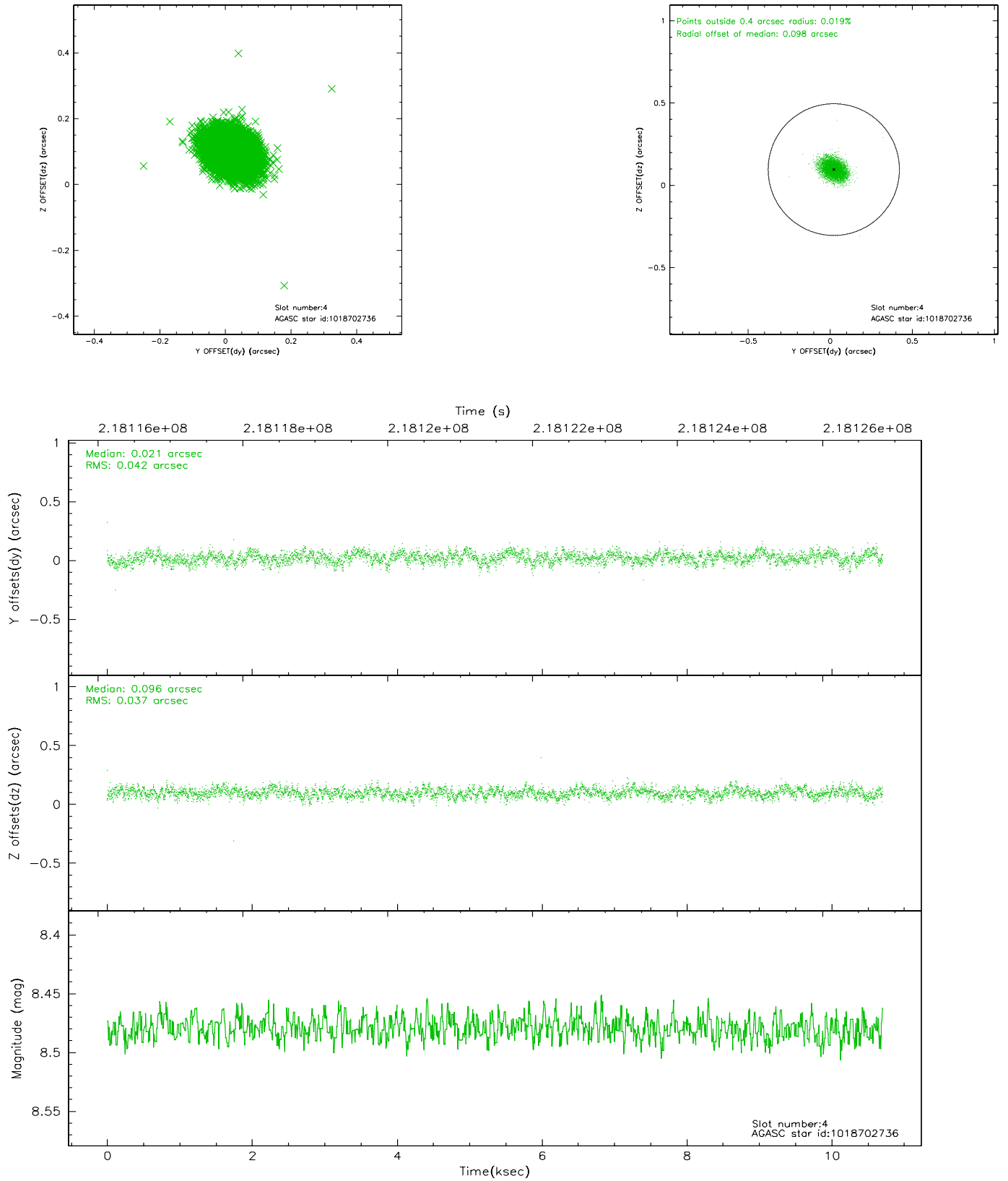
slot	status	id	mag	n_pts	med_dy	med_dz	dr1	dr2	ra	dec	mean_y	mean_z
0	FID	ACIS-S-2	7.10	2612	-0.022	-0.012	0.009	0.023	0.000000	0.000000	-759.71	-1733.23
1	FID	ACIS-S-4	7.20	2612	0.030	0.014	0.008	0.029	0.000000	0.000000	2153.39	174.77
2	FID	ACIS-S-5	7.23	2612	-0.038	0.007	0.008	0.017	0.000000	0.000000	-1811.94	168.99
3	GUIDE	1018695464	9.14	5222	-0.162	-0.140	0.079	0.127	192.636660	-39.119791	1746.78	2077.88
4	GUIDE	1018702736	8.48	5221	0.021	0.096	0.059	0.095	193.592920	-39.094387	1565.51	-588.23
5	GUIDE	1019226168	8.10	5224	0.213	0.308	0.067	0.104	193.643944	-40.169789	-2298.53	-312.43
6	GUIDE	1019227824	8.90	5222	0.202	-0.142	0.071	0.116	193.822930	-39.937402	-1521.42	-894.17
7	GUIDE	1018693888	9.41	5206	-0.275	-0.118	0.110	0.177	193.048104	-38.994800	2080.12	888.59

2.4 Star Slots

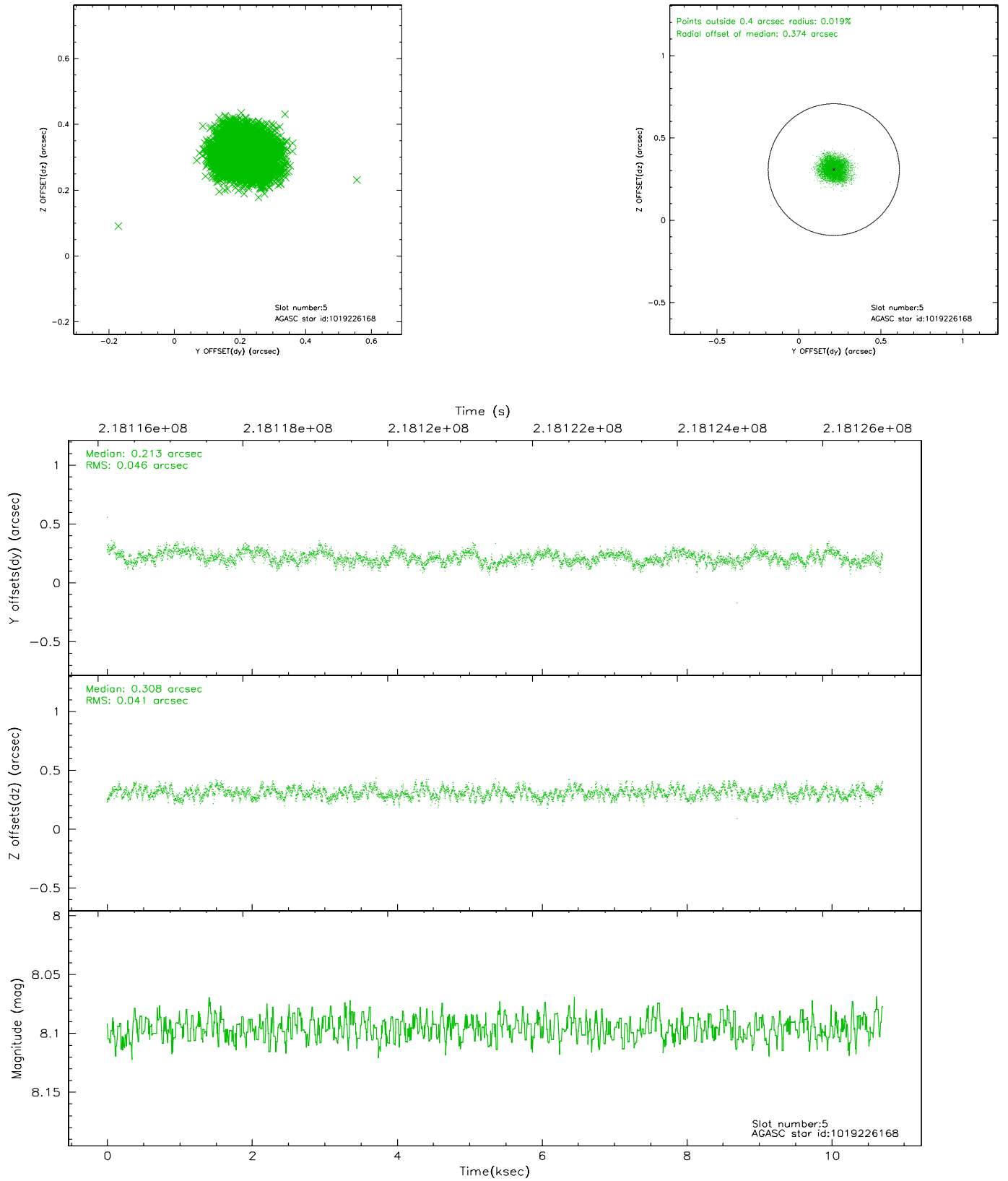
2.4.1 Slot 3



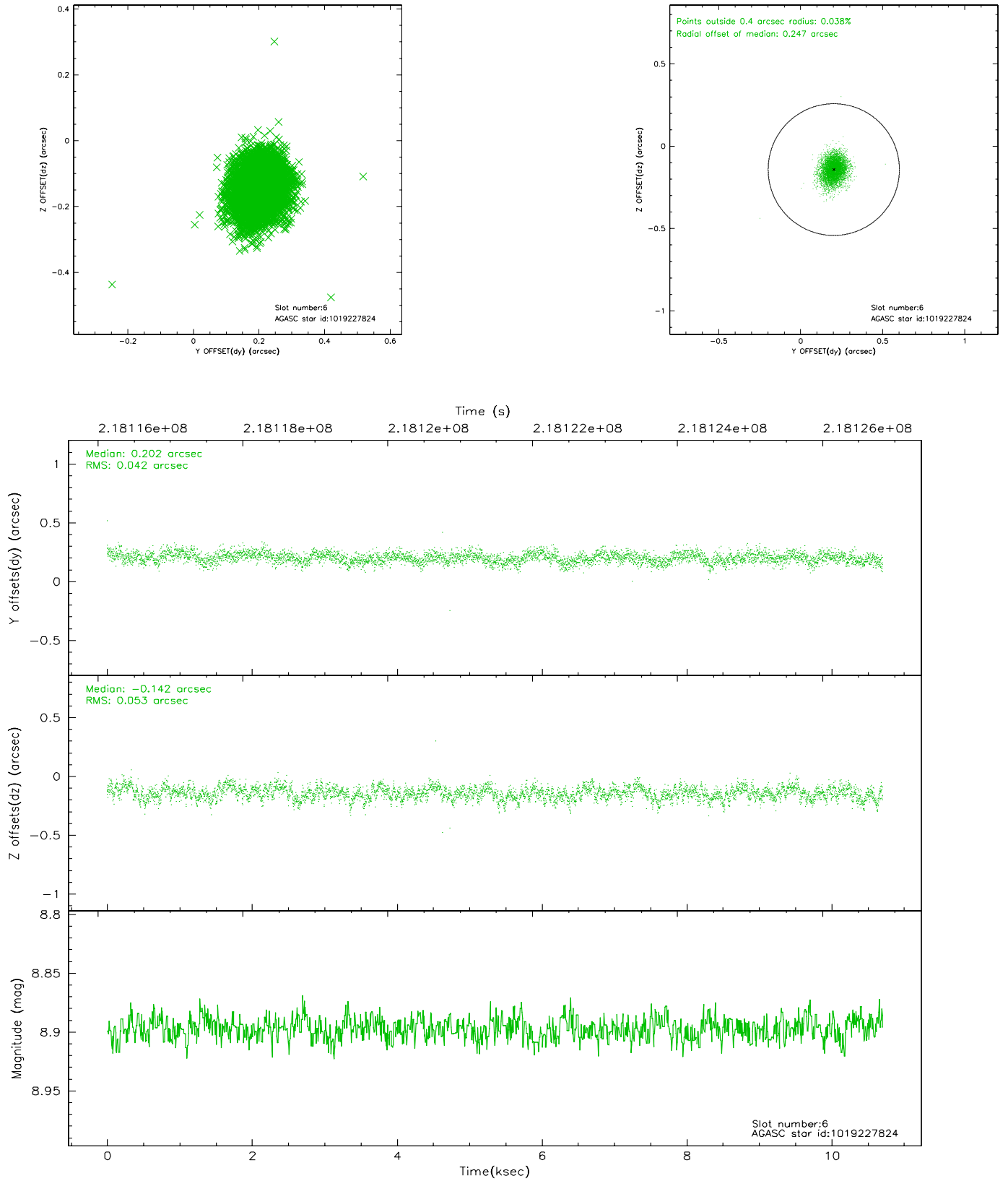
2.4.2 Slot 4



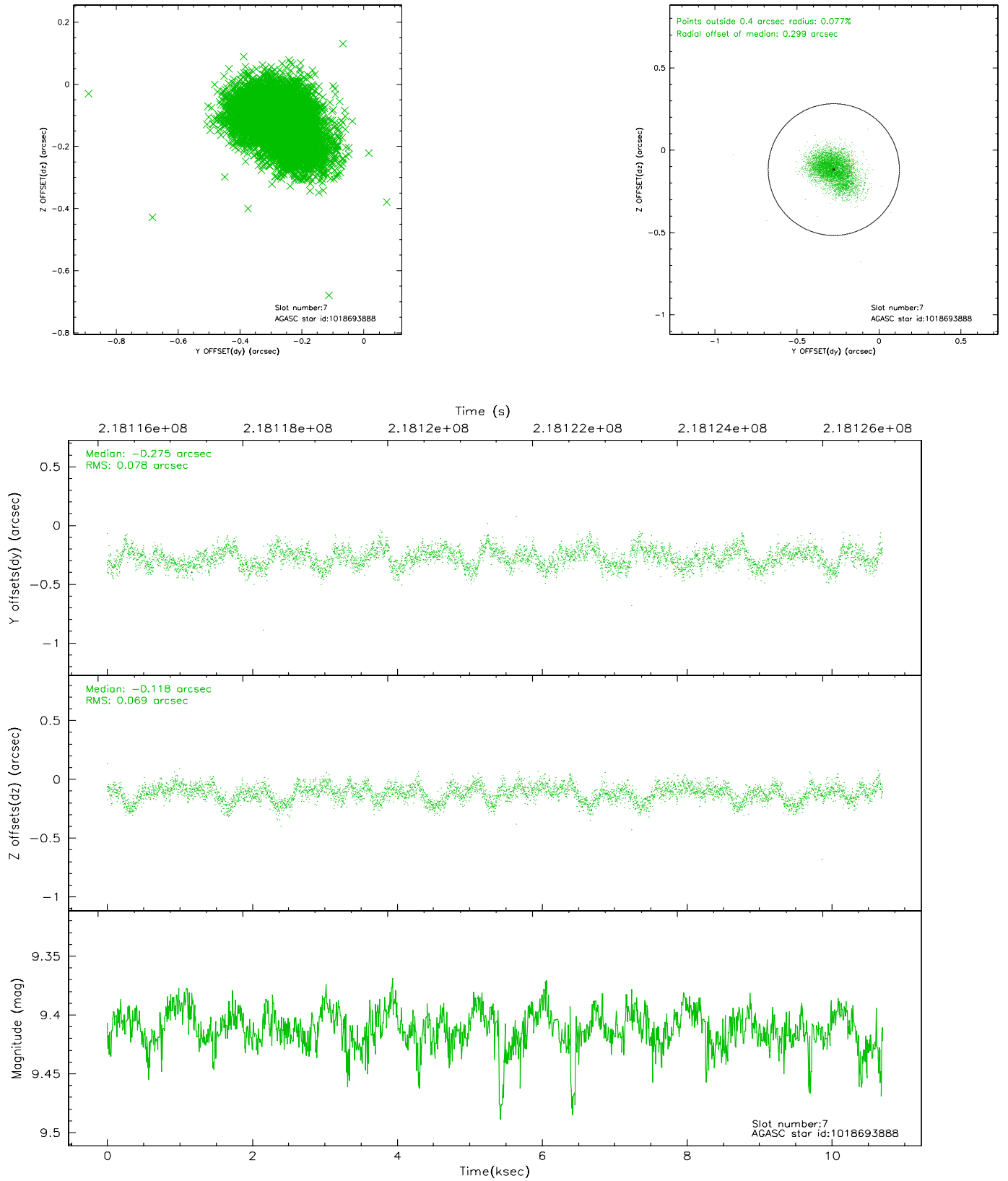
2.4.3 Slot 5



2.4.4 Slot 6

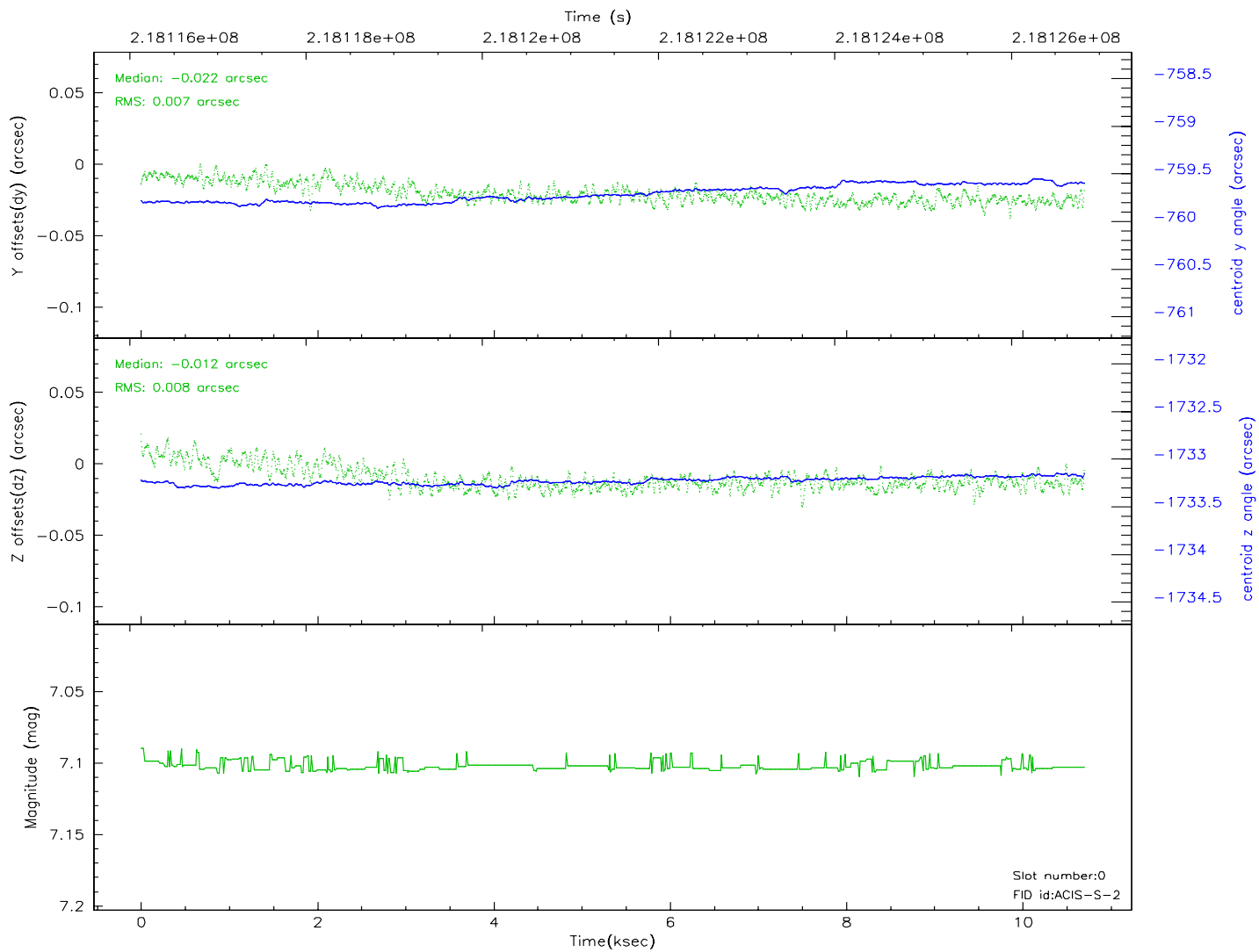
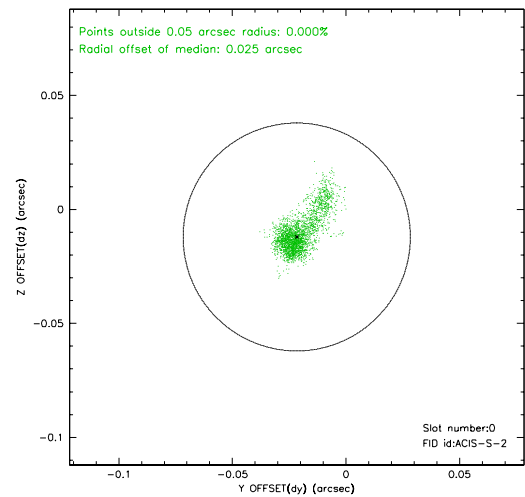
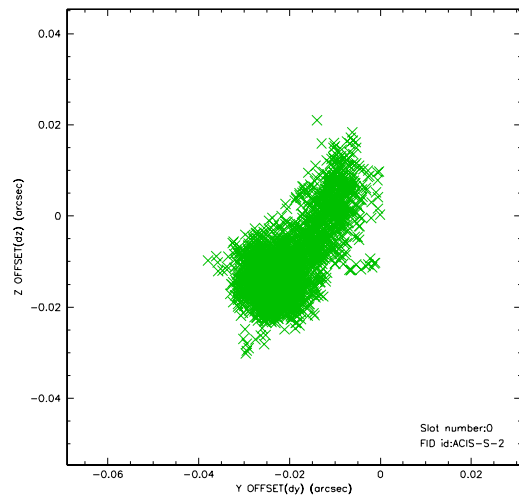


2.4.5 Slot 7

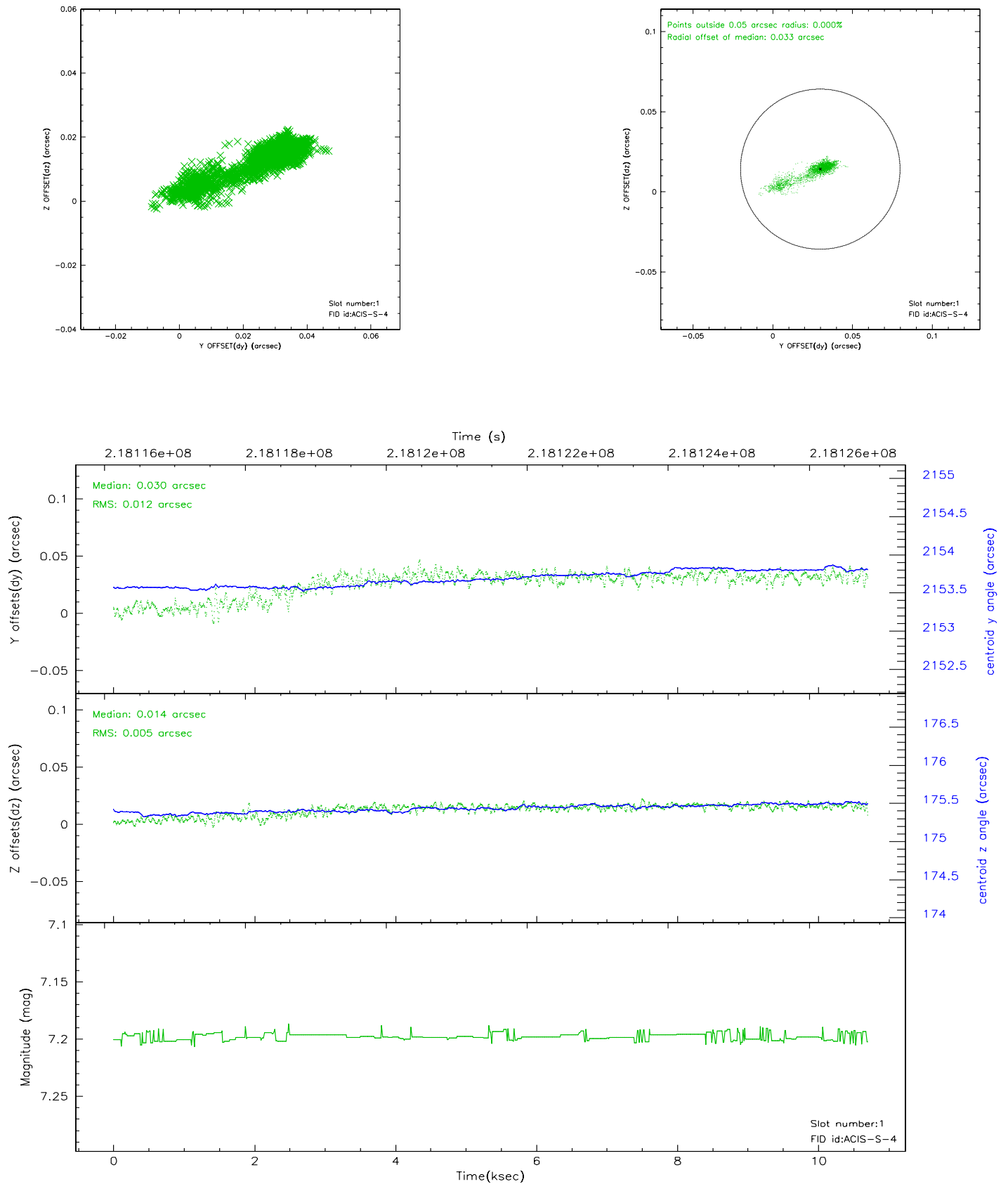


2.5 FID Slots

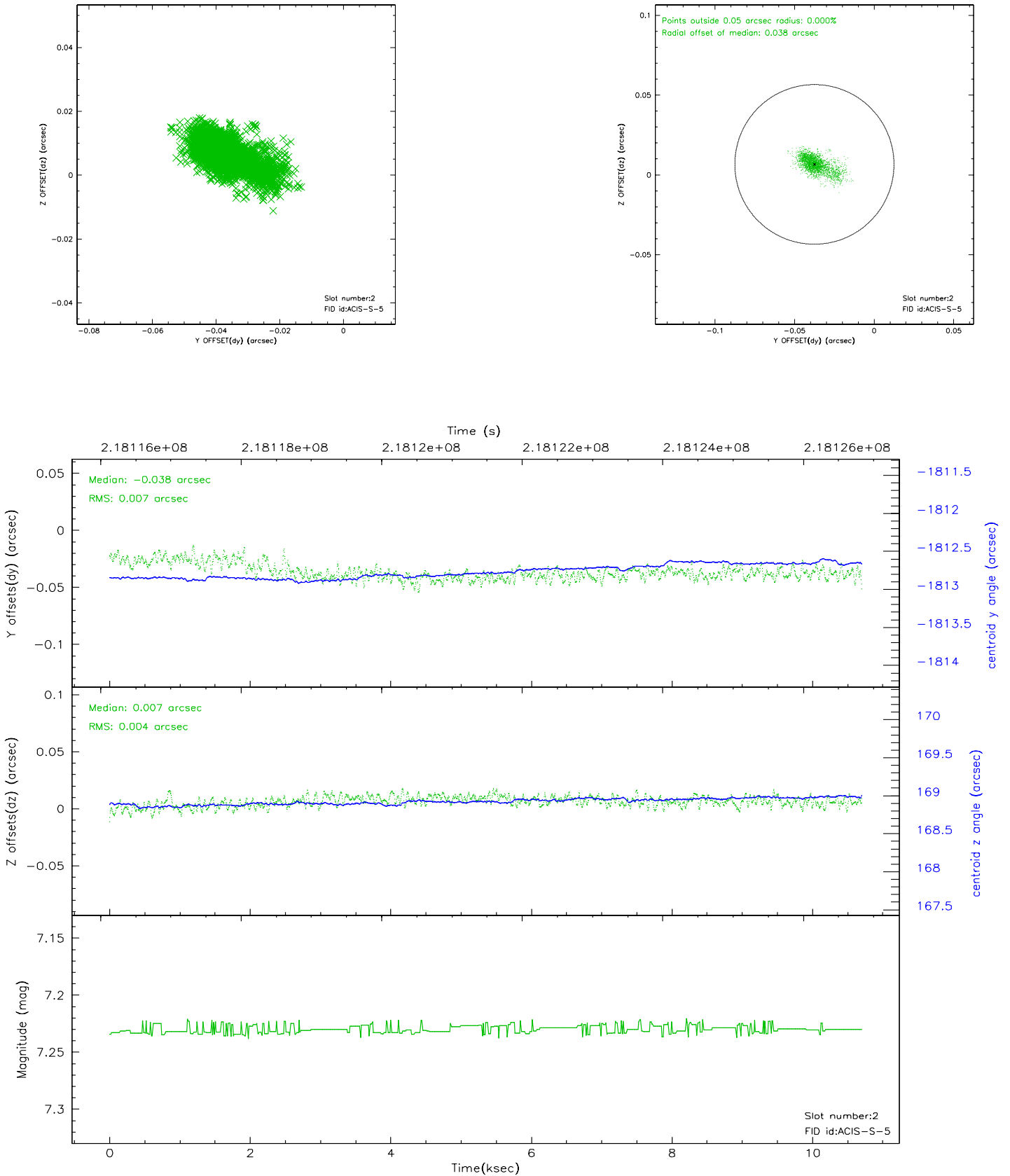
2.5.1 Slot 0



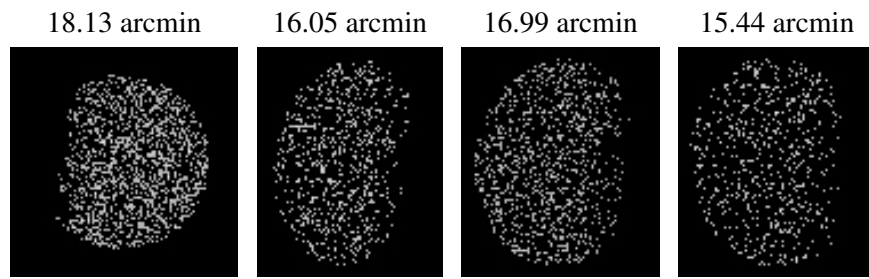
2.5.2 Slot 1



2.5.3 Slot 2



3 Point Sources



A Summary

A.1 Status

V&V Scientist	Jen Lauer
V&V Date (YYYY-MM-DD)	2006.04.11
V&V Edition	1
V&V Disposition and Status	OK
V&V Charge Time	9.955199

A.2 Comments