

# V&V Reference Report

## L2 ASCDS Version : 8.4.5

Observation 56818 - L2 Version 2  
Chandra X-Ray Center

L2 Processing Date : Jun 13 2012

## Contents

<b>1</b>	<b>Front</b>	<b>2</b>
<b>2</b>	<b>OBI</b>	<b>3</b>
2.1	OBI . . . . .	3
2.1.1	Images . . . . .	3
2.1.2	Bias . . . . .	3
2.1.3	Parameters . . . . .	4
2.1.4	Events . . . . .	4
2.2	Compared Parameters . . . . .	5
2.3	Star Slots . . . . .	6
2.4	FID Slots . . . . .	6
<b>A</b>	<b>Summary</b>	<b>7</b>
A.1	Status . . . . .	7
A.2	Comments . . . . .	7

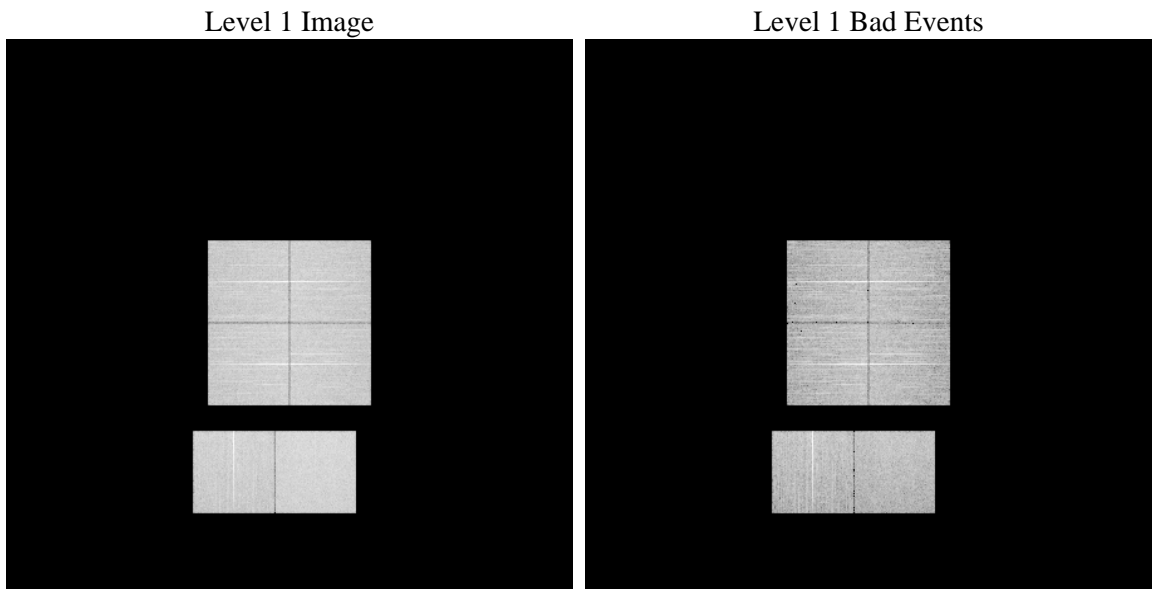
# 1 Front

seq_num	&#160	Sequence number
obs_id	56818	Observation id
title	ACIS-012367 diagnostics	Proposal title
observer	CHANDRA engineering request/realtime commanding	Principal investig
object	&#160	Source name
dtcycle	0	&#160
cycle	P	events from which exps? Prim/Second/Both
ra_targ	0.0	Observer's specified target RA [deg]
dec_targ	0.0	Observer's specified target Dec [deg]
ra_nom	5.9676503520135	Nominal RA [deg]
dec_nom	-27.202647023271	Nominal Dec [deg]
roll_nom	17.075725359897	Nominal Roll [deg]
revision	2	Processing version of data
ontime	8274.3106157184	Sum of GTIs [s]
livetime	8169.5363125104	Livetime [s]
ontime0	8274.2747358084	Sum of GTIs [s]
ontime1	8270.992685616	Sum of GTIs [s]
ontime2	8274.1926558018	Sum of GTIs [s]
ontime3	8274.3106157184	Sum of GTIs [s]
ontime6	8274.1516157985	Sum of GTIs [s]
ontime7	8274.3106157184	Sum of GTIs [s]
l2events	459245	Number of level 2 events

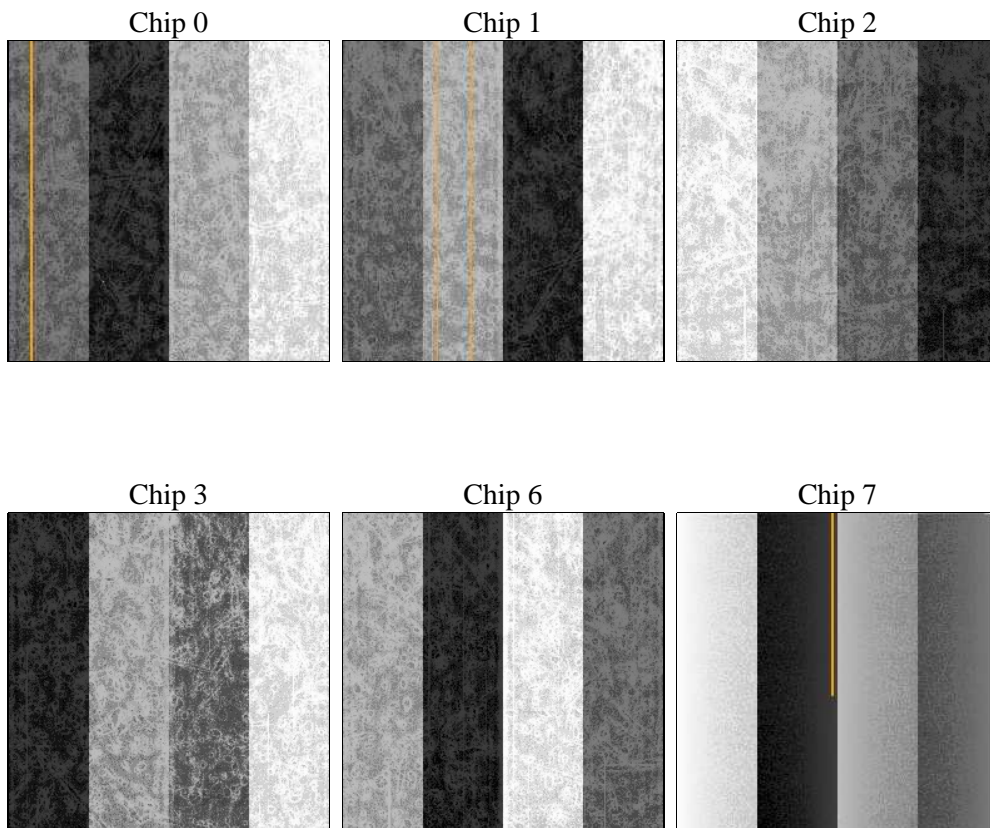
## 2 OBI

### 2.1 OBI

#### 2.1.1 Images



#### 2.1.2 Bias



### 2.1.3 Parameters

obi_num	0	Obi number	sched_exp_time	0.0	[s] Scheduled observation exposure time
ascdsver	8.4.5	Processing system revision	ontime	8274.3106157184	Sum of GTIs [s]
caldsver	4.4.10	&#160	ontime0	8274.2747358084	Sum of GTIs [s]
date	2012-06-13T21:56:31	Date and time of file creation	ontime1	8270.992685616	Sum of GTIs [s]
revision	2	Processing version of data	ontime2	8274.1926558018	Sum of GTIs [s]
			ontime3	8274.3106157184	Sum of GTIs [s]
			ontime6	8274.1516157985	Sum of GTIs [s]
			ontime7	8274.3106157184	Sum of GTIs [s]
			l1events	934452	Number of level 1 events

### 2.1.4 Events

	ccd 0	ccd 1	ccd 2	ccd 3	ccd 6	ccd 7		ccd 0	ccd 1	ccd 2	ccd 3	ccd 6	ccd 7
level 1 events	146859	147116	152431	148387	154737	184922	grade 0 events	39003	38671	39834	40324	40161	20938
rejected events	73122	73008	79159	74254	77780	71326		26%	26%	26%	27%	25%	11%
rejected %	49%	49%	51%	50%	50%	38%	grade 1 events	285	265	337	340	244	152
								0%	0%	0%	0%	0%	0%
							grade 2 events	13580	14074	12604	12903	13898	24700
								9%	9%	8%	8%	8%	13%
							grade 3 events	5008	4822	5068	4958	5072	10396
								3%	3%	3%	3%	3%	5%
							grade 4 events	4921	4914	4935	5100	4975	10558
								3%	3%	3%	3%	3%	5%
							grade 5 events	4034	4230	3889	4467	4554	11537
								2%	2%	2%	3%	2%	6%
							grade 6 events	11225	11627	10831	10848	12851	47004
								7%	7%	7%	7%	8%	25%
							grade 7 events	68803	68513	74933	69447	72982	59637
								46%	46%	49%	46%	47%	32%

## 2.2 Compared Parameters

Parameter	Planned	Actual	Parameter	Planned	Actual
Instrument	ACIS	ACIS	Obspar format version number	7	7
Detector	ACIS-012367	ACIS-012367	Obspar file type	PREDICTED	ACTUAL
Grating	NONE	NONE	Obspar update status	NONE	UPDATED
Data mode	FAINT	FAINT	Number of optional ACIS chips dropped	0	0
Observation mode	SECONDARY	SECONDARY	On-chip summing requested	N	N
[deg] Pointing RA	0	5.967650352013472	Subarray requested	NONE	NONE
[deg] Pointing Dec	0	-27.20264702327053	Alternating exposures requested	N	N
[deg] Pointing Roll	0.0	17.07572535989738	[s] Primary exposure time	3.2	3.2
[mm] SIM focus pos	-1.429586	-0.6828225247311905			
[mm] SIM defocus	0.1037507710433287	0.8505141146731063			
[mm] SIM translation stage pos	250.455976	250.466033080201			
[mm] SIM translation stage offset	0	-0.01005468664627074			
[s] Observation start time (MET)	369880833.805163	369880832.78015			
Observation start date	2009-09-21T00:40:34	2009-09-21T00:40:32			
[s] Observation end time (MET)	369890647.155655	369890646.13065			
Observation end date	2009-09-21T03:24:07	2009-09-21T03:24:06			
Read mode	TIMED	TIMED			

## **2.3 Star Slots**

## **2.4 FID Slots**

## **A Summary**

### **A.1 Status**

V&V Scientist	Jen Lauer
V&V Date (YYYY-MM-DD)	2012.06.18
V&V Edition	1
V&V Disposition and Status	OK
V&V Charge Time	8.2743106157184

### **A.2 Comments**