

V&V Reference Report

L2 ASCDS Version : 7.6.7.1

Observation 5678 - L2 Version 002
Chandra X-Ray Center

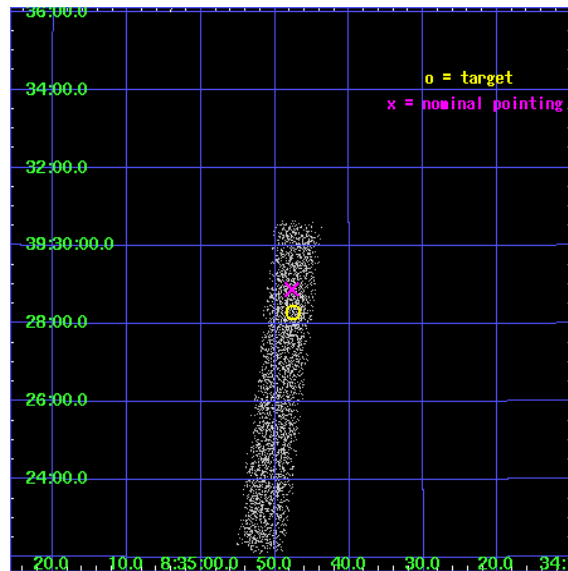
L2 Processing Date : Apr 8 2006

Contents

1	Front	2
2	OBI	3
2.1	OBI	3
2.1.1	Images	3
2.1.2	Bias	3
2.1.3	Parameters	4
2.1.4	Events	4
2.2	Compared Parameters	5
2.3	Aspect	6
2.4	Star Slots	9
2.4.1	Slot 3	9
2.4.2	Slot 4	10
2.4.3	Slot 5	11
2.4.4	Slot 6	12
2.4.5	Slot 7	13
2.5	FID Slots	14
2.5.1	Slot 0	14
2.5.2	Slot 1	15
2.5.3	Slot 2	16
3	Point Sources	17
A	Summary	18
A.1	Status	18
A.2	Comments	18

1 Front

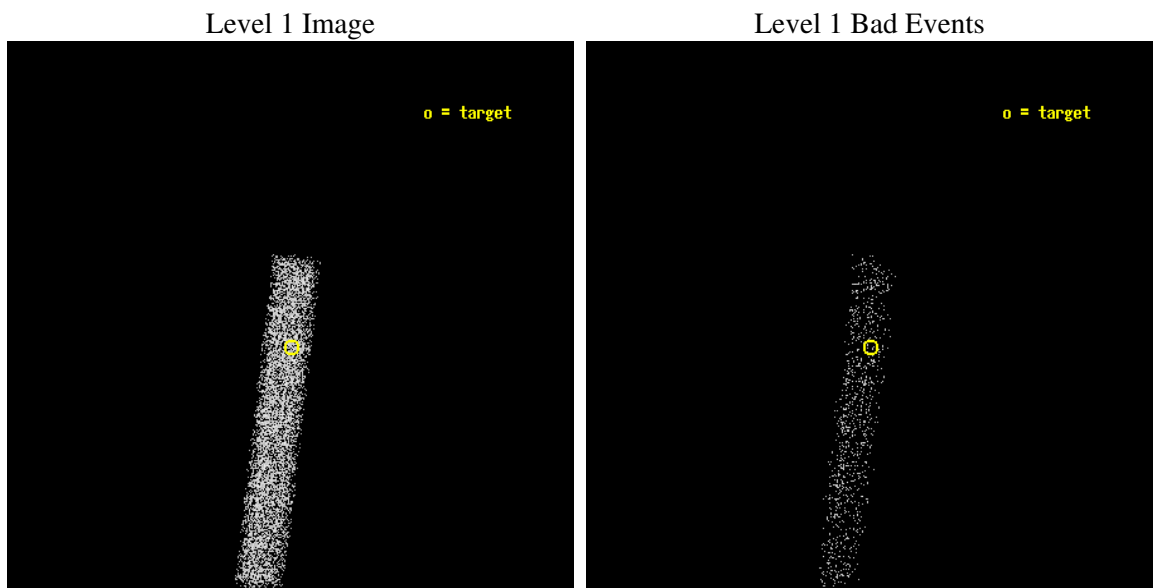
seq_num	701101
obs_id	5678
title	Gems in the Chandra Deep Fields: The Nature of Optically Passive X-ray Galaxies (aka XBONGs)
observer	Dr. Sally Laurent-Muehleisen
object	RXJ0834.8+3928
dtcycle	0
cycle	P
ra_targ	128.698333
dec_targ	39.471583
ra_nom	128.6989934254
dec_nom	39.481179983752
roll_nom	96.62104980446
revision	2
ontime	6184.0000921488
livetime	5608.56166529
ontime7	6184.0000921488
l2events	3756



2 OBI

2.1 OBI

2.1.1 Images



2.1.2 Bias

Chip 7



2.1.3 Parameters

obi_num	0
ascdsver	7.6.7.1
caldbver	3.2.1
date	2006-04-08T18:47:11
revision	2

sched_exp_time	6000.000000
ontime	6720.0591724217
ontime7	6720.0591724217
l1events	9448

2.1.4 Events

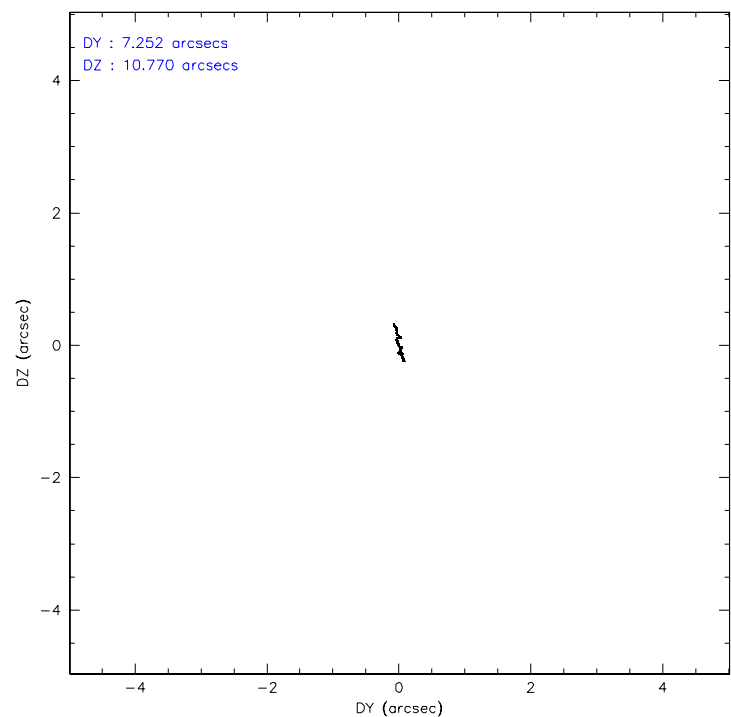
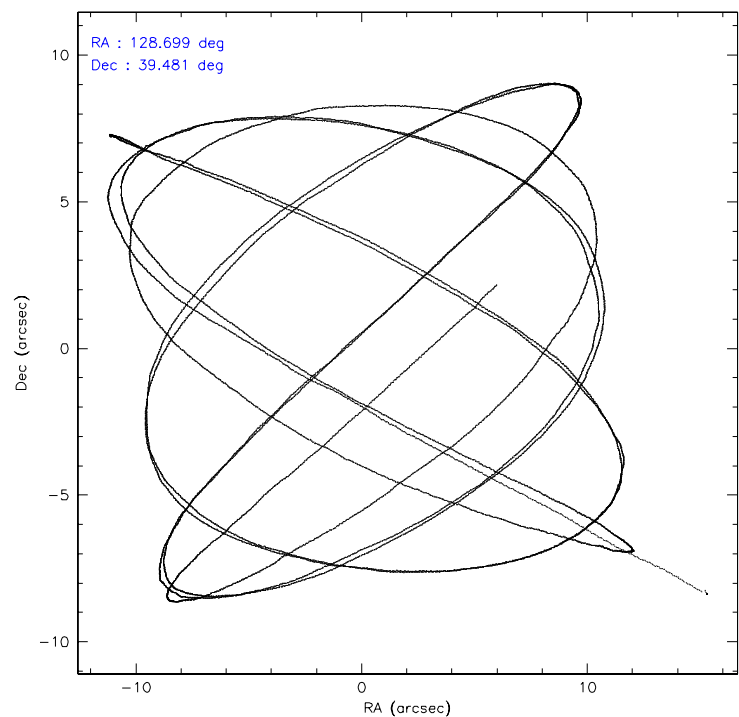
	ccd 7
level 1 events	9448
rejected events	5543
rejected %	58%

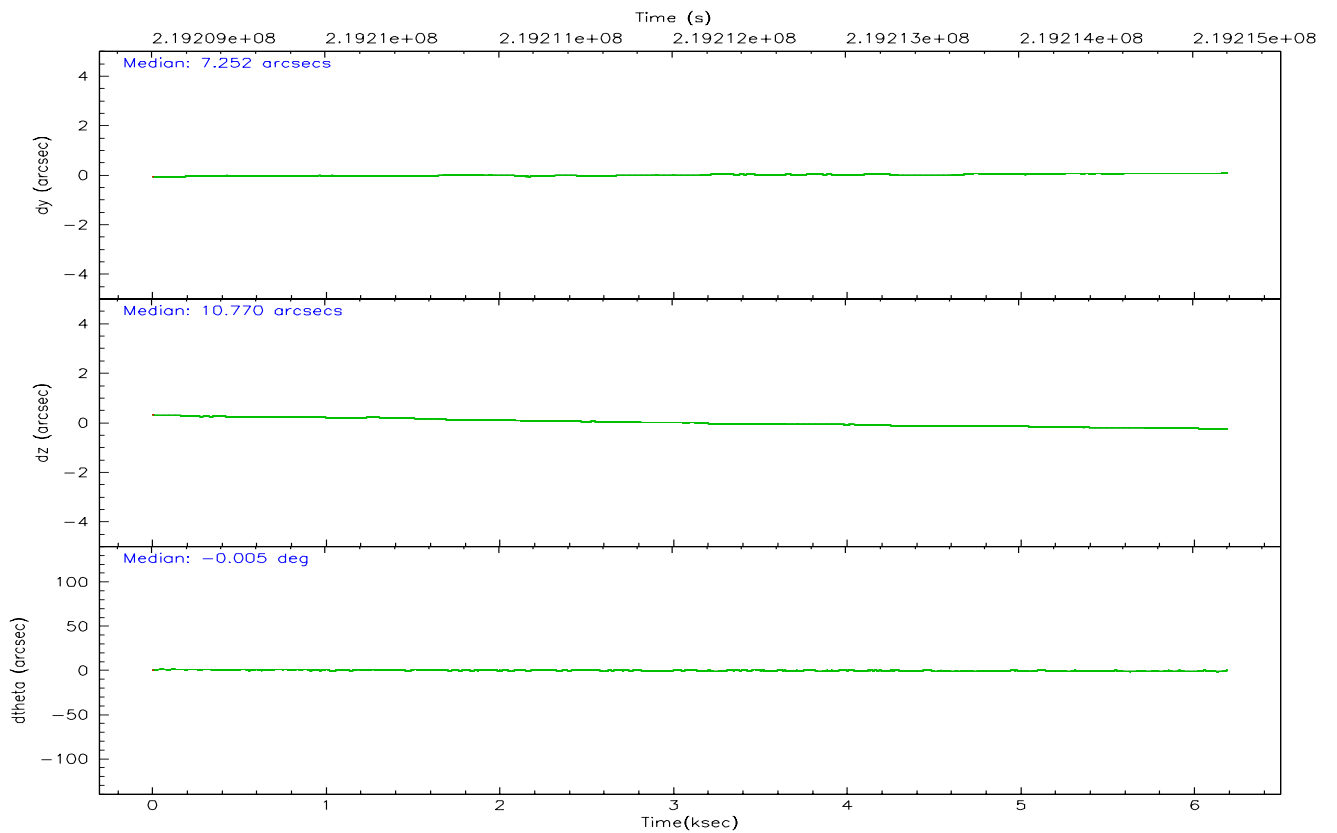
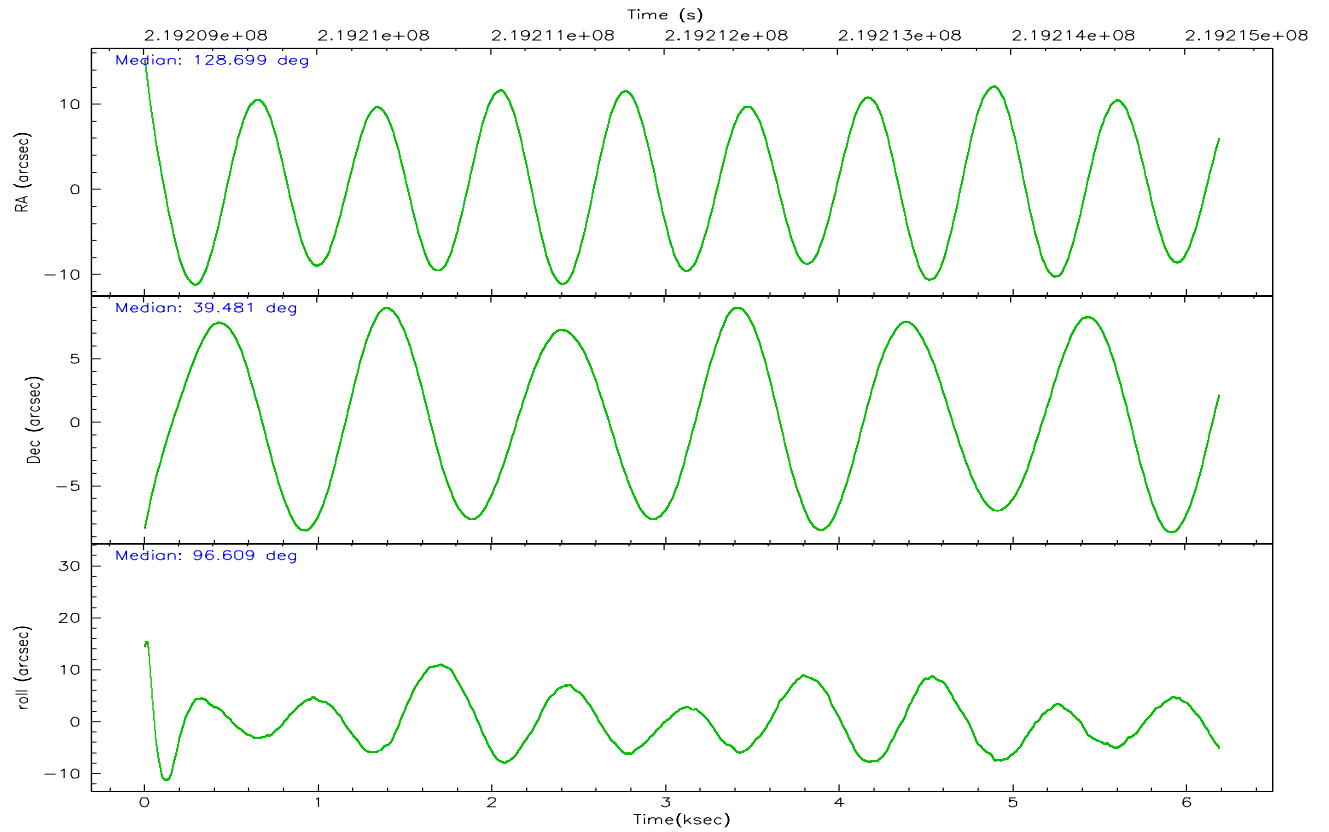
	ccd 7
grade 0 events	368
	3%
grade 1 events	8
	0%
grade 2 events	934
	9%
grade 3 events	436
	4%
grade 4 events	411
	4%
grade 5 events	636
	6%
grade 6 events	2098
	22%
grade 7 events	4557
	48%

2.2 Compared Parameters

Parameter	Planned	Actual	Parameter	Planned	Actual
Instrument	ACIS	ACIS	Obspar format version number	6	6
Detector	ACIS-7	ACIS-7	Obspar file type	PREDICTED	ACTUAL
Grating	NONE	NONE	Obspar update status	NONE	UPDATED
Data mode	FAINT	FAINT	On-chip summing requested	N	N
Observation mode	POINTING	POINTING	Subarray requested	1/8	1/8
Pointing RA	128.720520	128.6989934253986	Subarray start row	0	449
Pointing Dec	39.459606	39.48117998375228	Subarray row count	1024	128
Pointing Roll	96.450654	96.62104980445987	Alternating exposures requested	N	N
SIM focus pos (mm)	-0.684267	-0.6828225247311905	Primary exposure time	0.000000	0.4
SIM defocus (mm)	0	0.001444936568705701			
SIM translation stage pos (mm)	-190.132523	-190.1425803651734			
SIM translation stage offset (mm)	0	0.01005778216563158			
Observation start time	219209196.184000	219208304.27219			
Observation start date	2004-12-12T03:25:32	2004-12-12T03:11:44			
Observation end time	219215196.184000	219215836.48503			
Observation end date	2004-12-12T05:05:32	2004-12-12T05:17:16			
Read mode	TIMED	TIMED			

2.3 Aspect



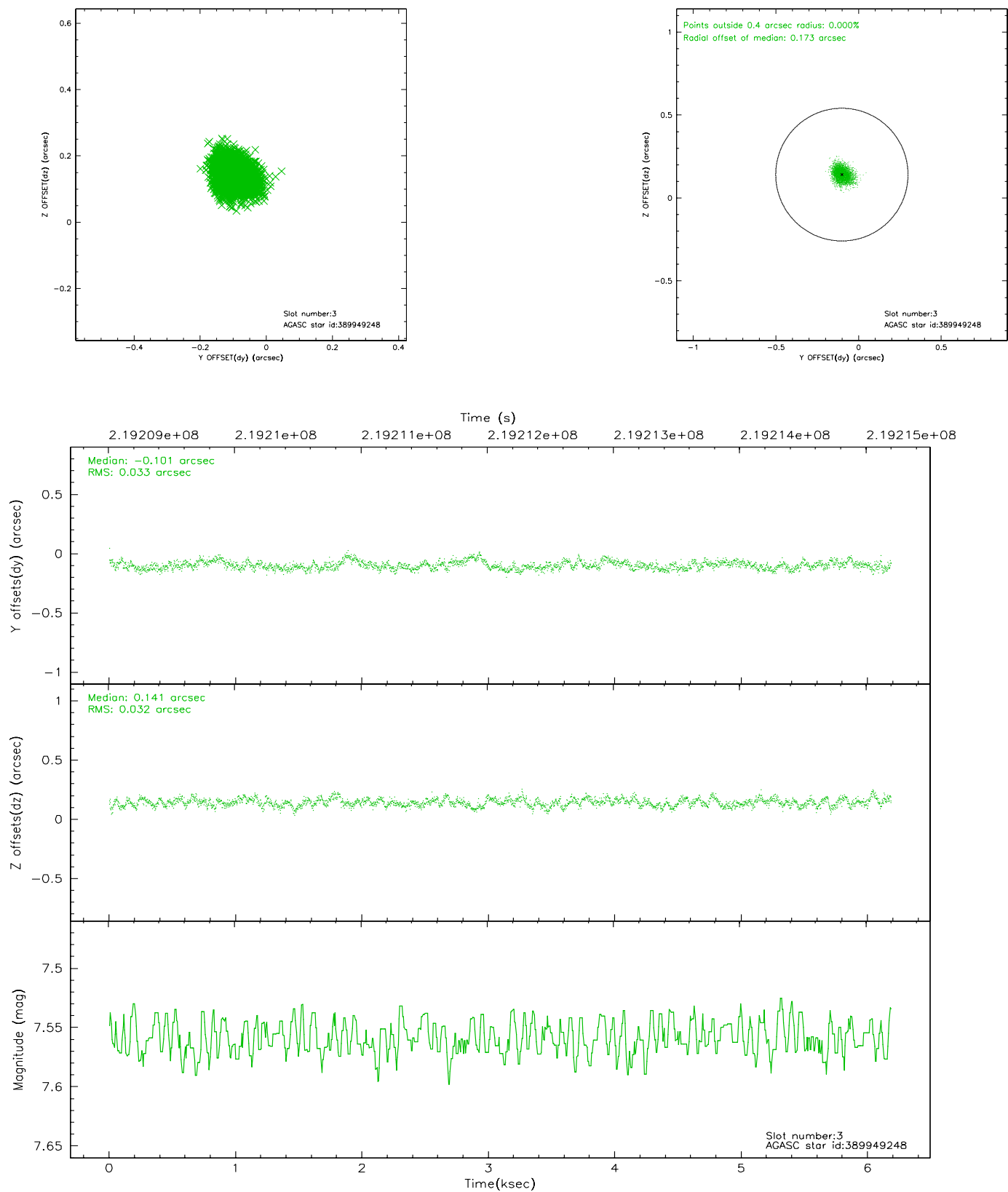


Slot Statistics

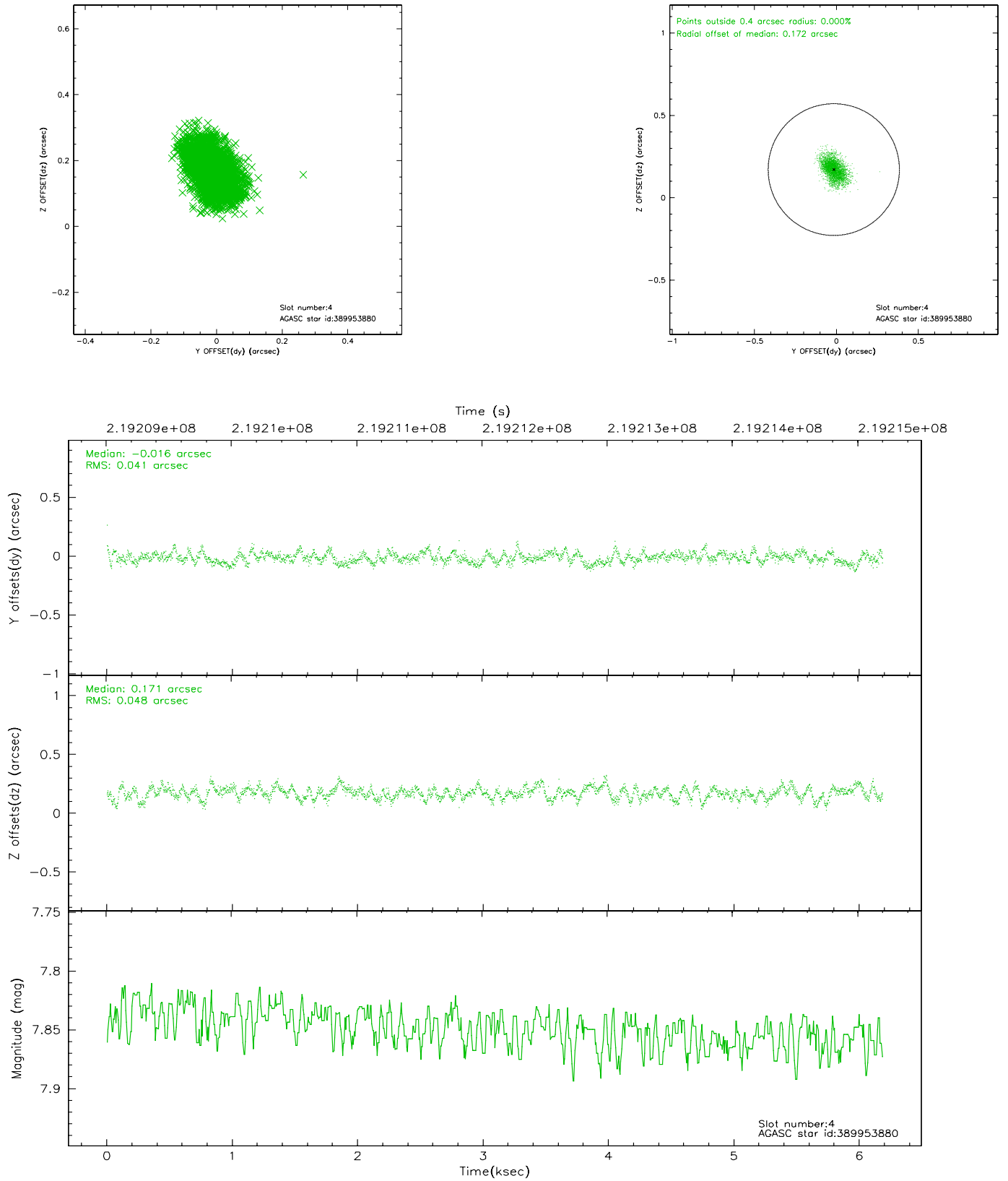
slot	status	id	mag	n_pts	med_dy	med_dz	dr1	dr2	ra	dec	mean_y	mean_z
0	FID	ACIS-S-2	7.10	1509	-0.034	0.010	0.007	0.011	0.000000	0.000000	-760.01	-1732.01
1	FID	ACIS-S-4	7.21	1509	0.043	0.014	0.006	0.012	0.000000	0.000000	2152.87	175.56
2	FID	ACIS-S-5	7.23	1509	-0.040	-0.015	0.007	0.011	0.000000	0.000000	-1811.67	170.20
3	GUIDE	389949248	7.56	3018	-0.101	0.141	0.049	0.080	129.168961	39.770488	976.18	-1359.04
4	GUIDE	389953880	7.85	3016	-0.016	0.171	0.067	0.111	129.484084	39.644812	434.64	-2179.63
5	GUIDE	389954920	9.45	3018	-0.068	0.204	0.096	0.163	129.395627	39.795125	998.14	-1992.65
6	GUIDE	389955104	9.34	3014	0.056	-0.083	0.085	0.137	128.379060	39.904445	1699.27	756.16
7	GUIDE	389950960	8.46	3017	0.121	-0.430	0.077	0.122	127.902919	39.142160	-868.58	2395.04

2.4 Star Slots

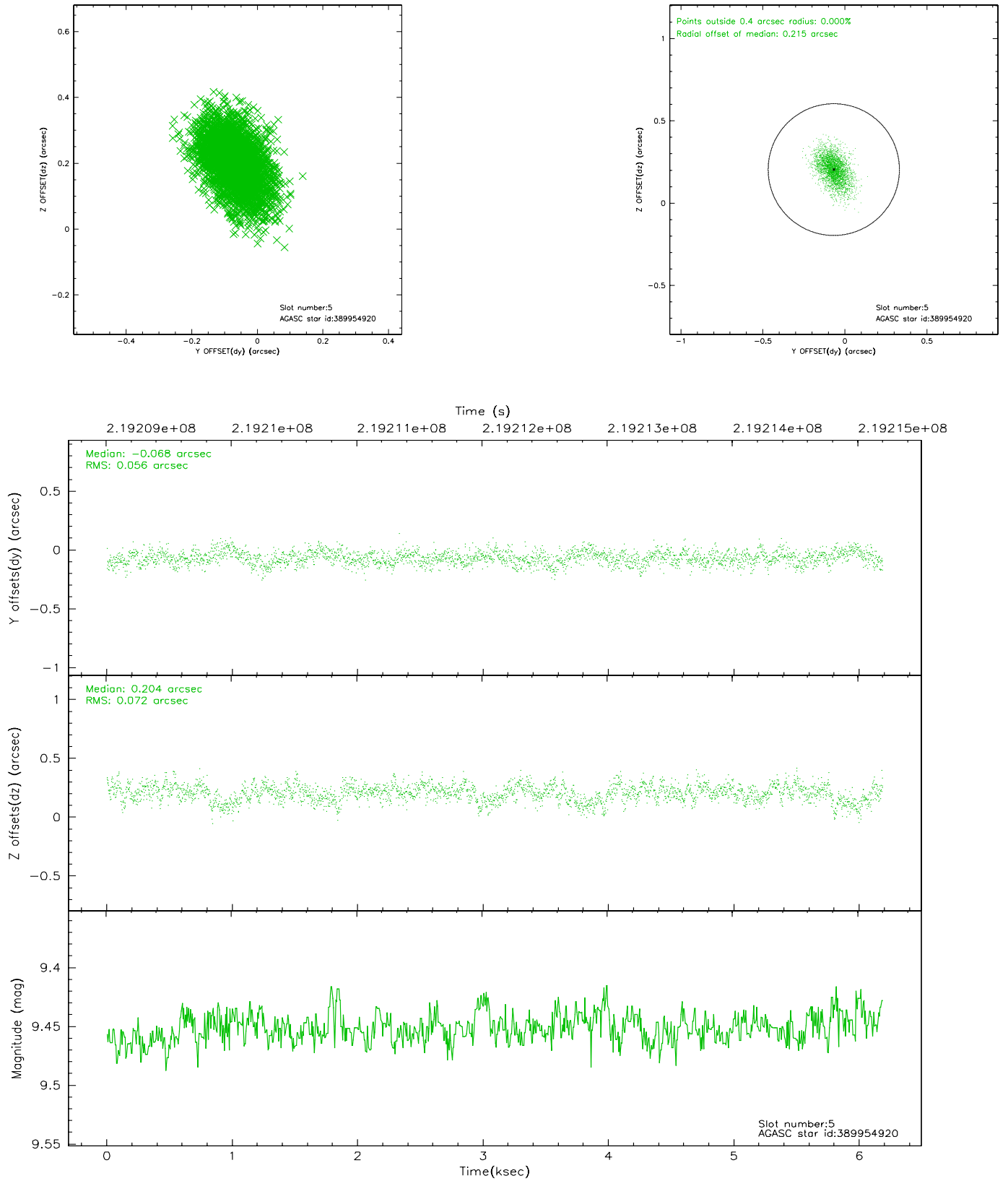
2.4.1 Slot 3



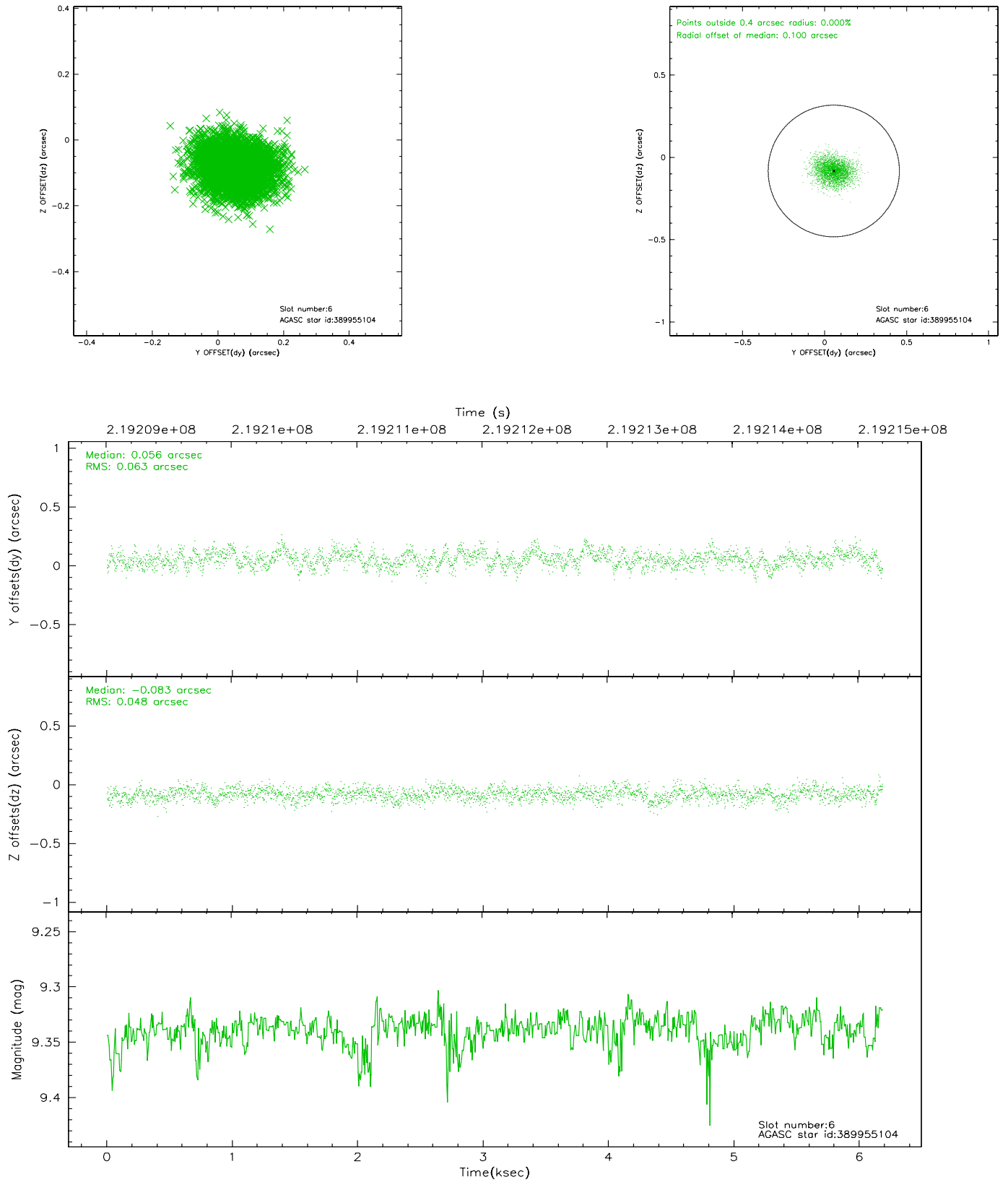
2.4.2 Slot 4



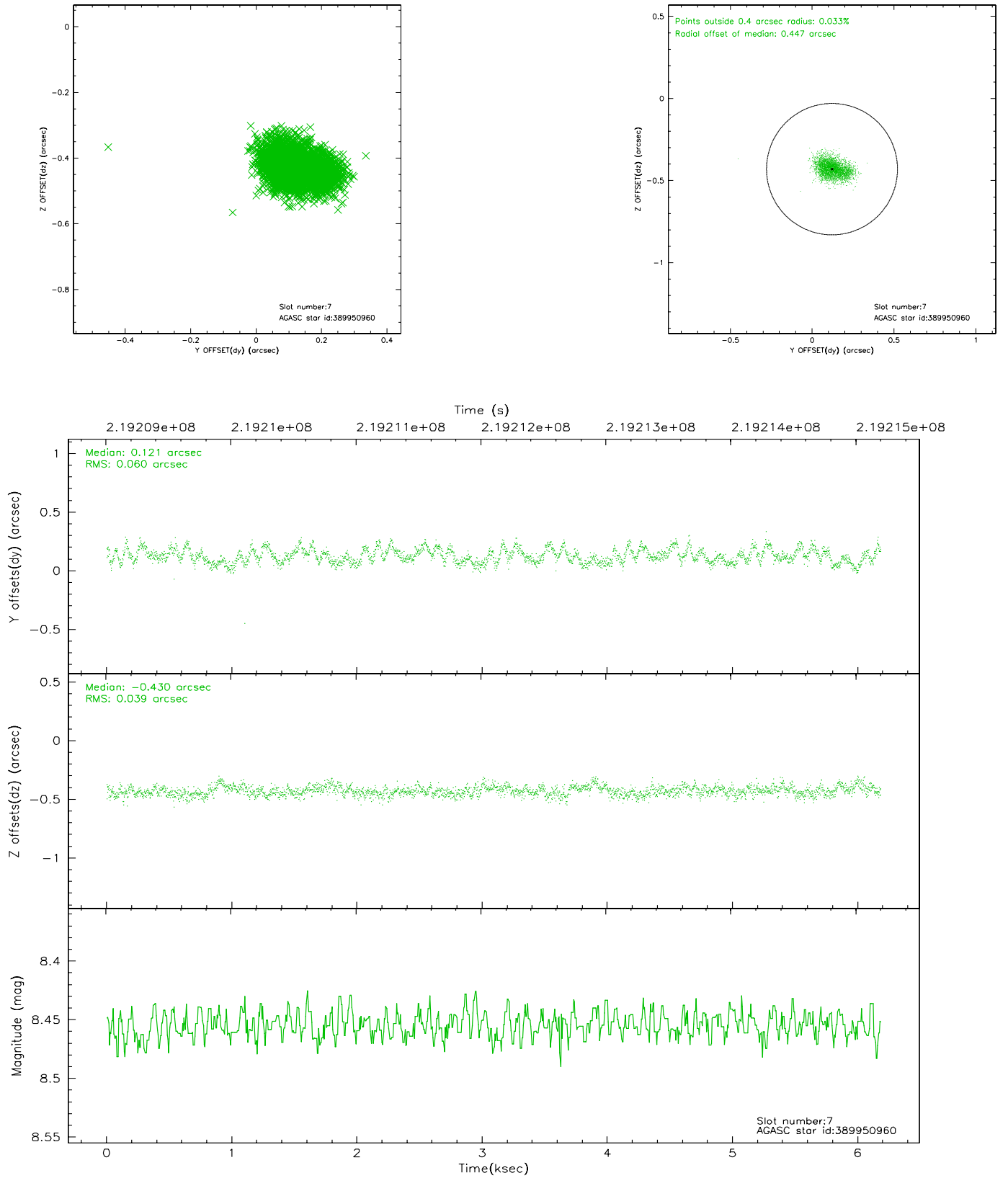
2.4.3 Slot 5



2.4.4 Slot 6

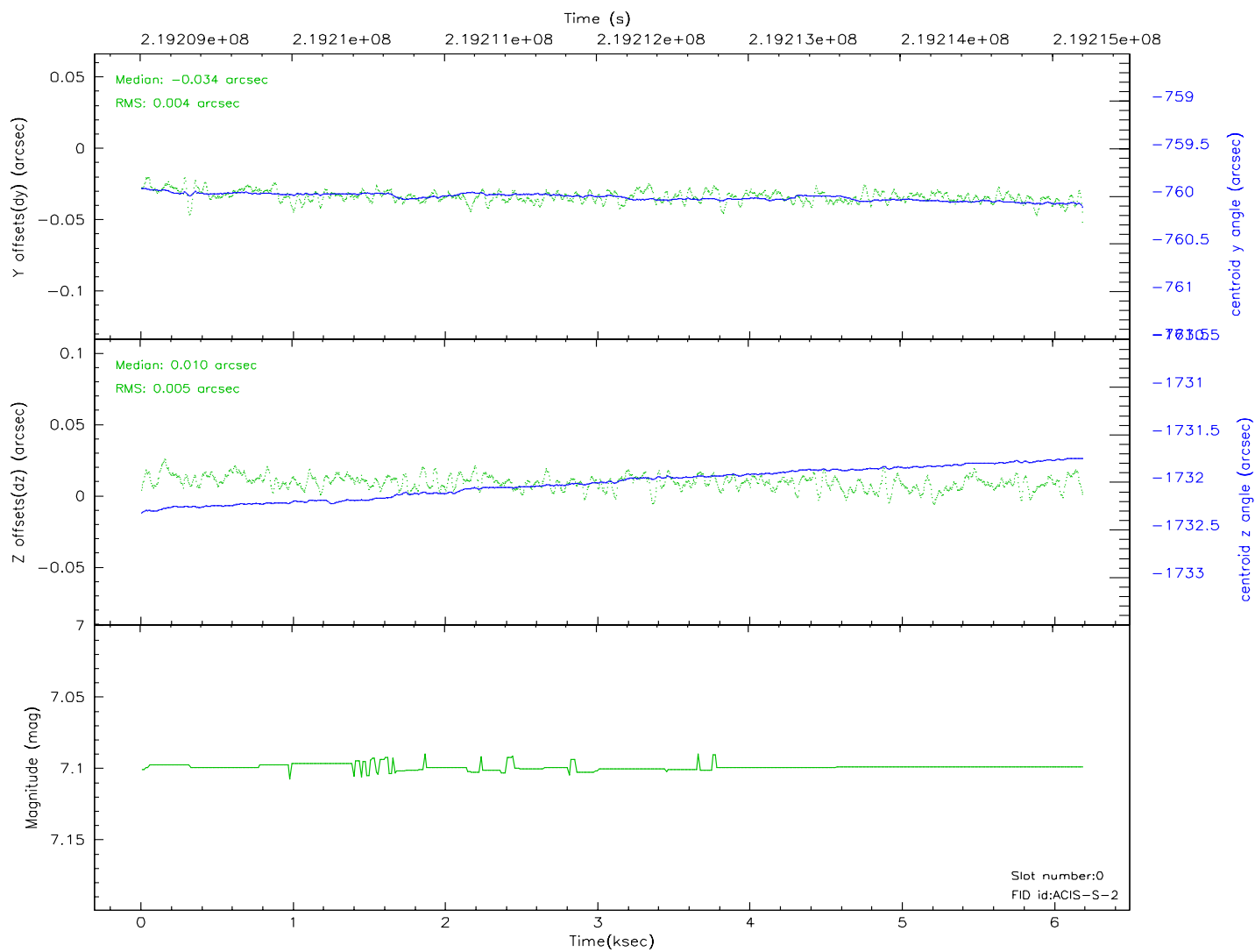
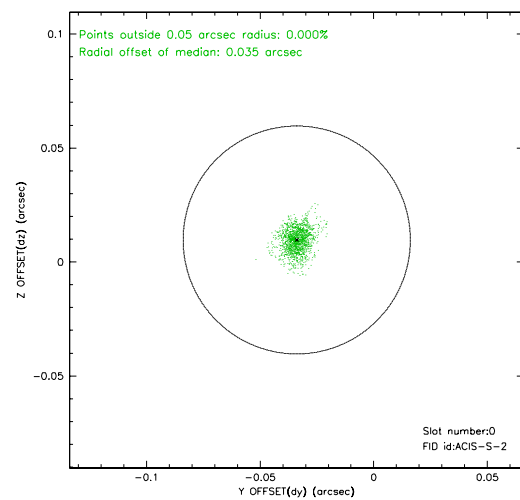
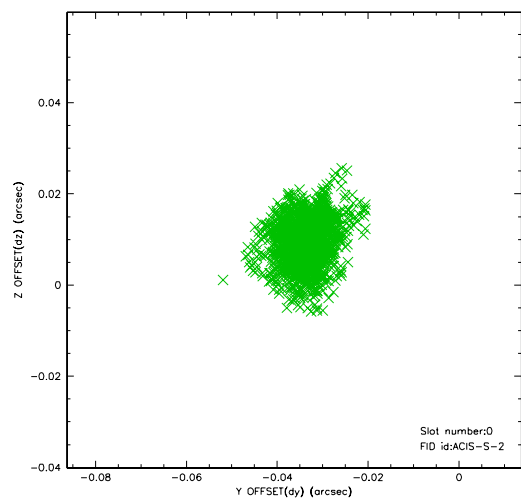


2.4.5 Slot 7

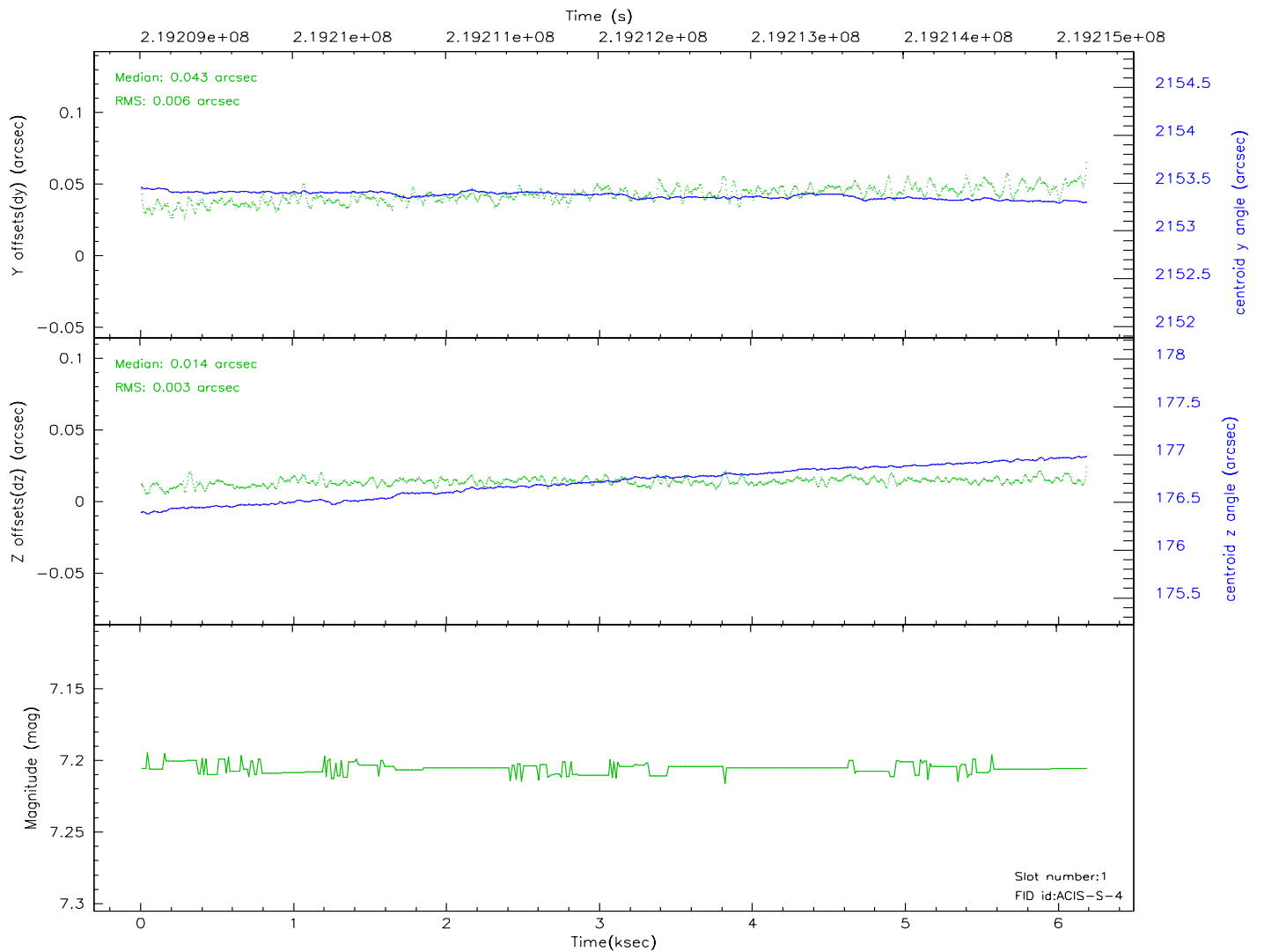
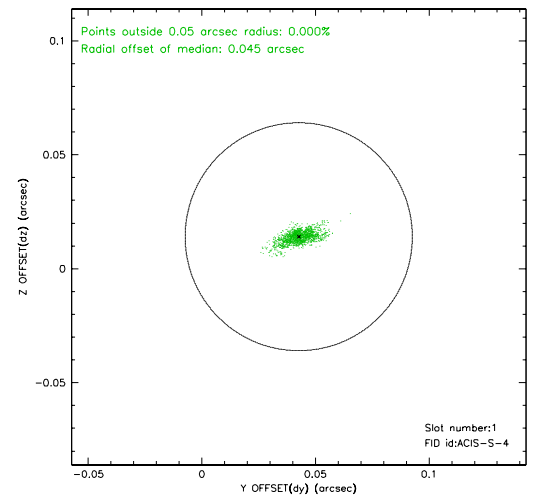
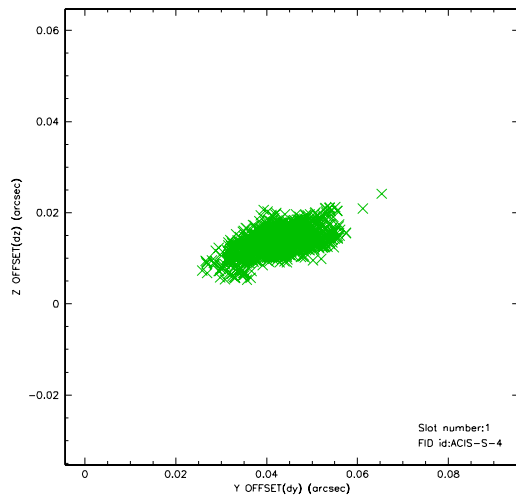


2.5 FID Slots

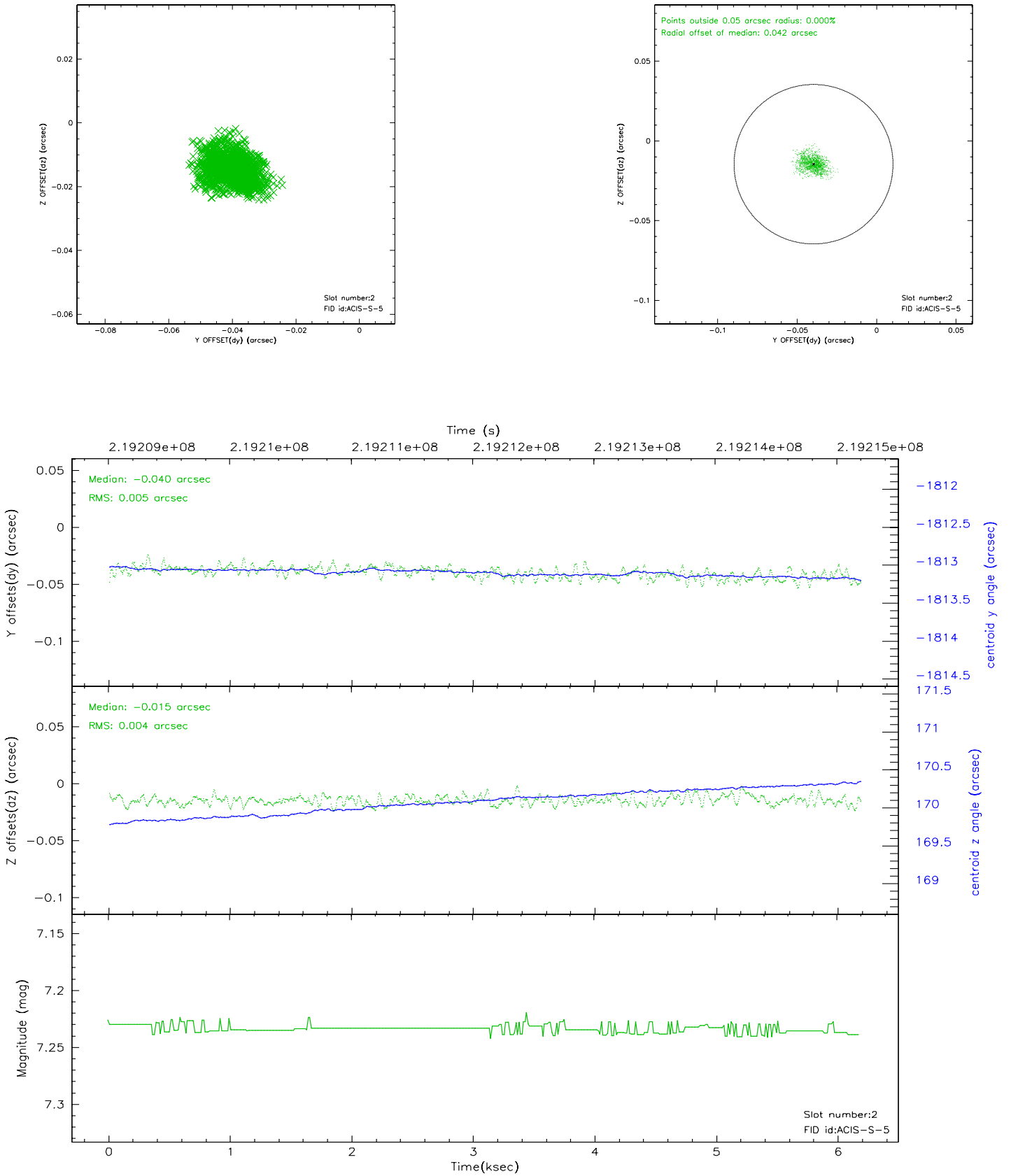
2.5.1 Slot 0



2.5.2 Slot 1



2.5.3 Slot 2



3 Point Sources

A Summary

A.1 Status

V&V Scientist	Beth Sundheim
V&V Date (YYYY-MM-DD)	2006.04.10
V&V Edition	1
V&V Disposition and Status	OK
V&V Charge Time	6.184

A.2 Comments