

# V&V Reference Report

## L2 ASCDS Version : 7.6.7

Observation 5608 - L2 Version 002  
Chandra X-Ray Center

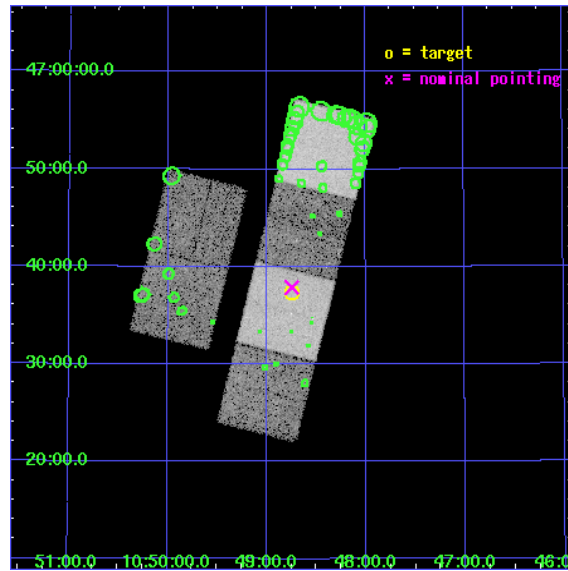
L2 Processing Date: Feb 16 2006

## Contents

<b>1</b>	<b>Front</b>	<b>2</b>
<b>2</b>	<b>OBI</b>	<b>3</b>
2.1	OBI . . . . .	3
2.1.1	Images . . . . .	3
2.1.2	Bias . . . . .	3
2.1.3	Parameters . . . . .	4
2.1.4	Events . . . . .	4
2.2	Compared Parameters . . . . .	5
2.3	Aspect . . . . .	6
2.4	Star Slots . . . . .	9
2.4.1	Slot 3 . . . . .	9
2.4.2	Slot 4 . . . . .	10
2.4.3	Slot 5 . . . . .	11
2.4.4	Slot 6 . . . . .	12
2.4.5	Slot 7 . . . . .	13
2.5	FID Slots . . . . .	14
2.5.1	Slot 0 . . . . .	14
2.5.2	Slot 1 . . . . .	15
2.5.3	Slot 2 . . . . .	16
<b>3</b>	<b>Point Sources</b>	<b>17</b>
<b>A</b>	<b>Summary</b>	<b>18</b>
A.1	Status . . . . .	18
A.2	Comments . . . . .	18

# 1 Front

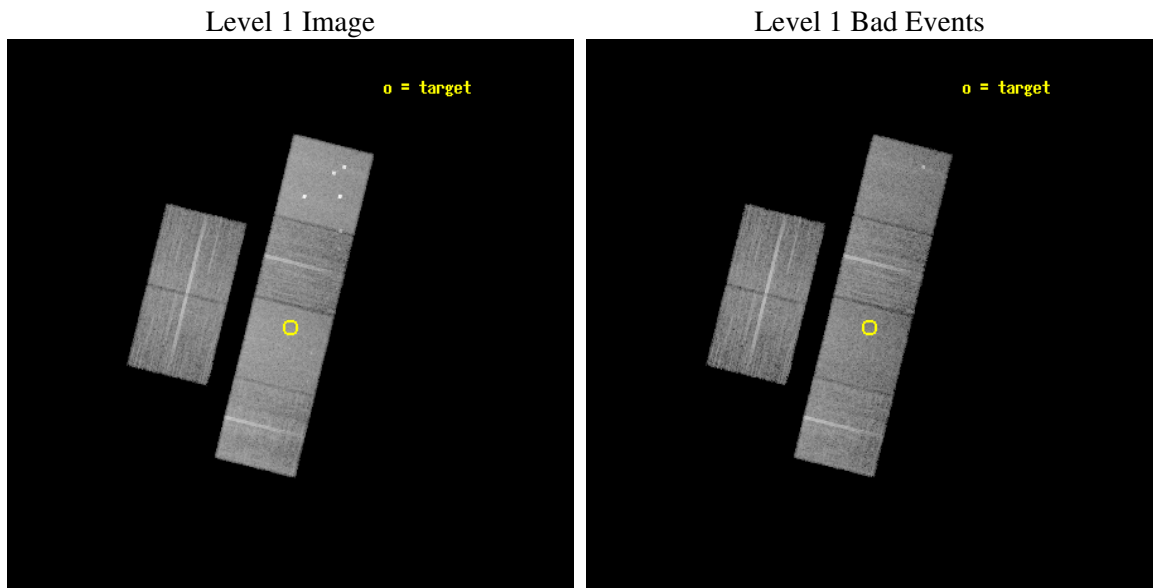
seq_num	701031
obs_id	5608
title	A Chandra Survey of the Most Distant Quasars: X-raying the First Massive Black Holes
observer	Prof. William Brandt
object	SDSS J1048+4637
dtcycle	0
cycle	P
ra_targ	162.1875
dec_targ	46.62175
ra_nom	162.18655405927
dec_nom	46.631374819799
roll_nom	103.907856301
revision	2
ontime	15158.399943531
livetime	14966.455156153
ontime2	15158.399943531
ontime3	15158.399943531
ontime5	15158.399943531
ontime6	15155.158973247
ontime7	15158.399943531
ontime8	15155.158973247
l2events	164652



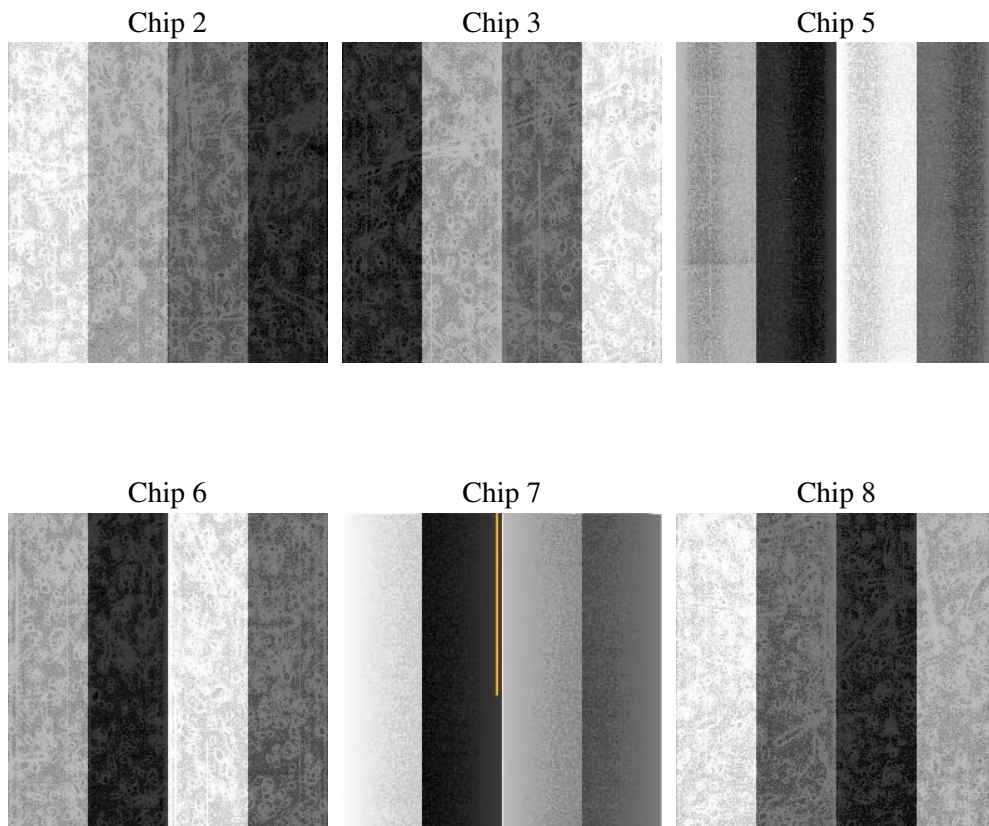
## 2 OBI

### 2.1 OBI

#### 2.1.1 Images



#### 2.1.2 Bias



### 2.1.3 Parameters

obi_num	0
ascdsver	7.6.7
caldbver	3.2.1
date	2006-02-16T17:27:58
revision	2

sched_exp_time	15200.000000
ontime	15161.43623364
ontime2	15161.436223745
ontime3	15161.436223745
ontime5	15161.43623364
ontime6	15158.195253462
ontime7	15161.43623364
ontime8	15158.195253462
l1events	769610

### 2.1.4 Events

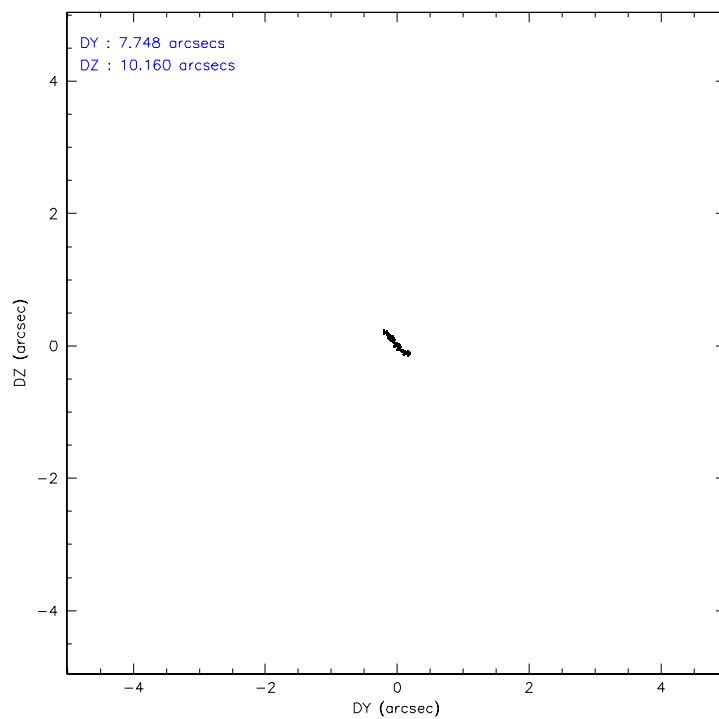
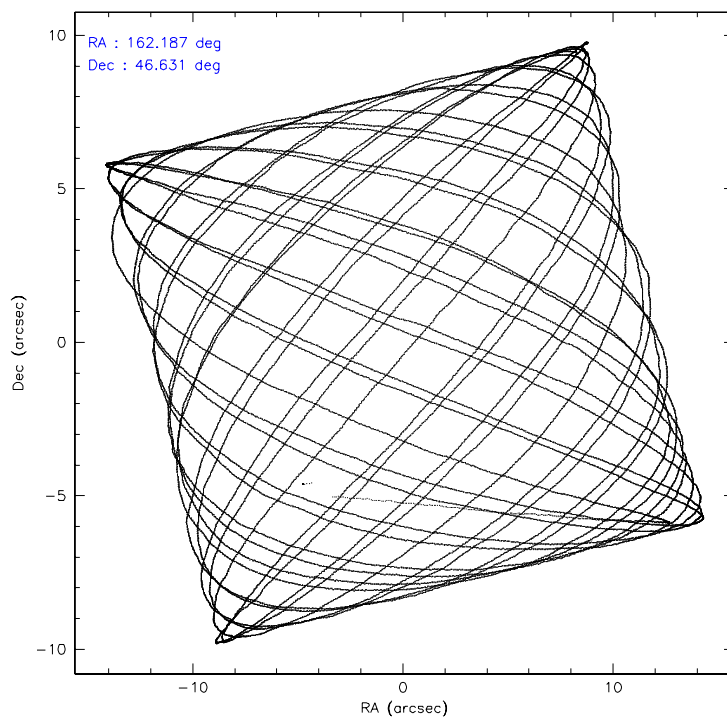
	ccd 2	ccd 3	ccd 5	ccd 6	ccd 7	ccd 8
level 1 events	108624	104199	167232	108729	144549	136277
rejected events	95879	91939	89827	95701	89864	106948
rejected %	88%	88%	53%	88%	62%	78%

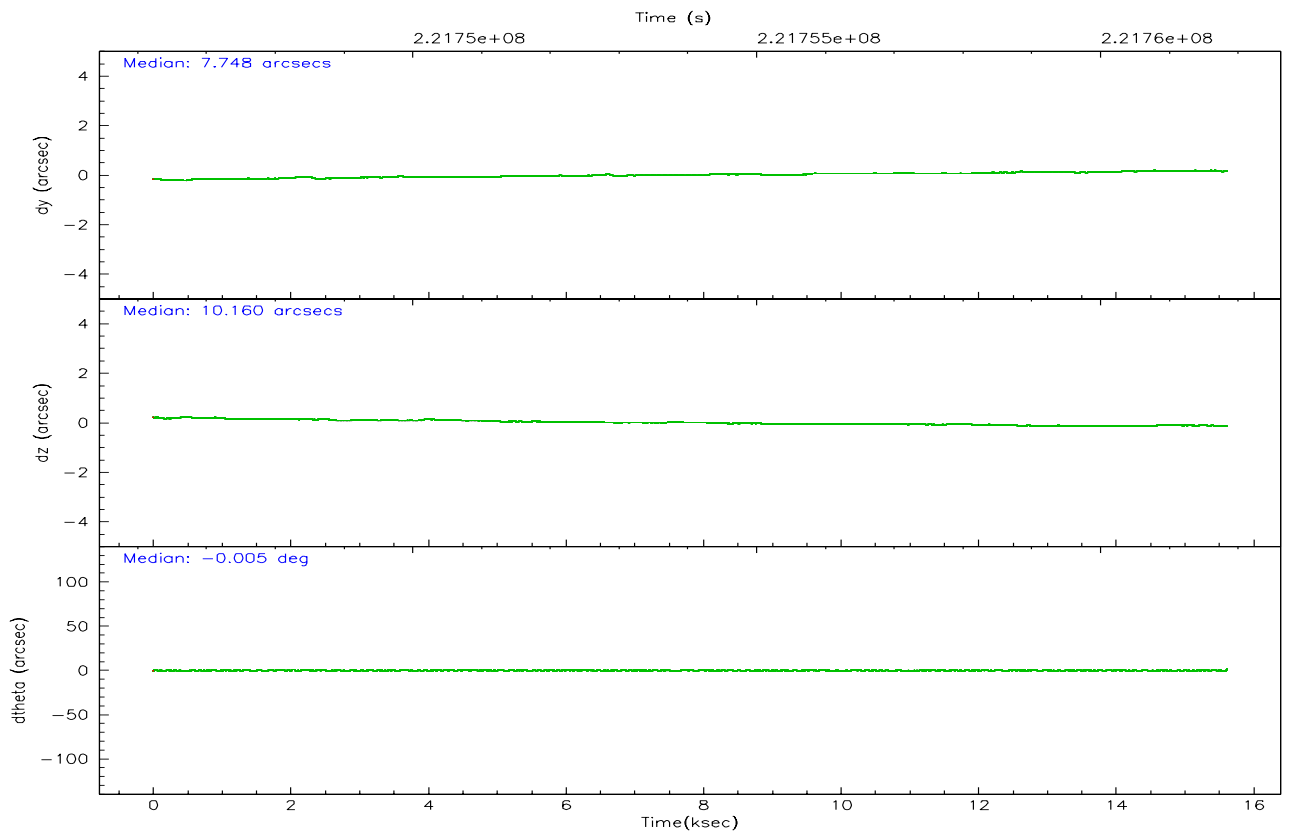
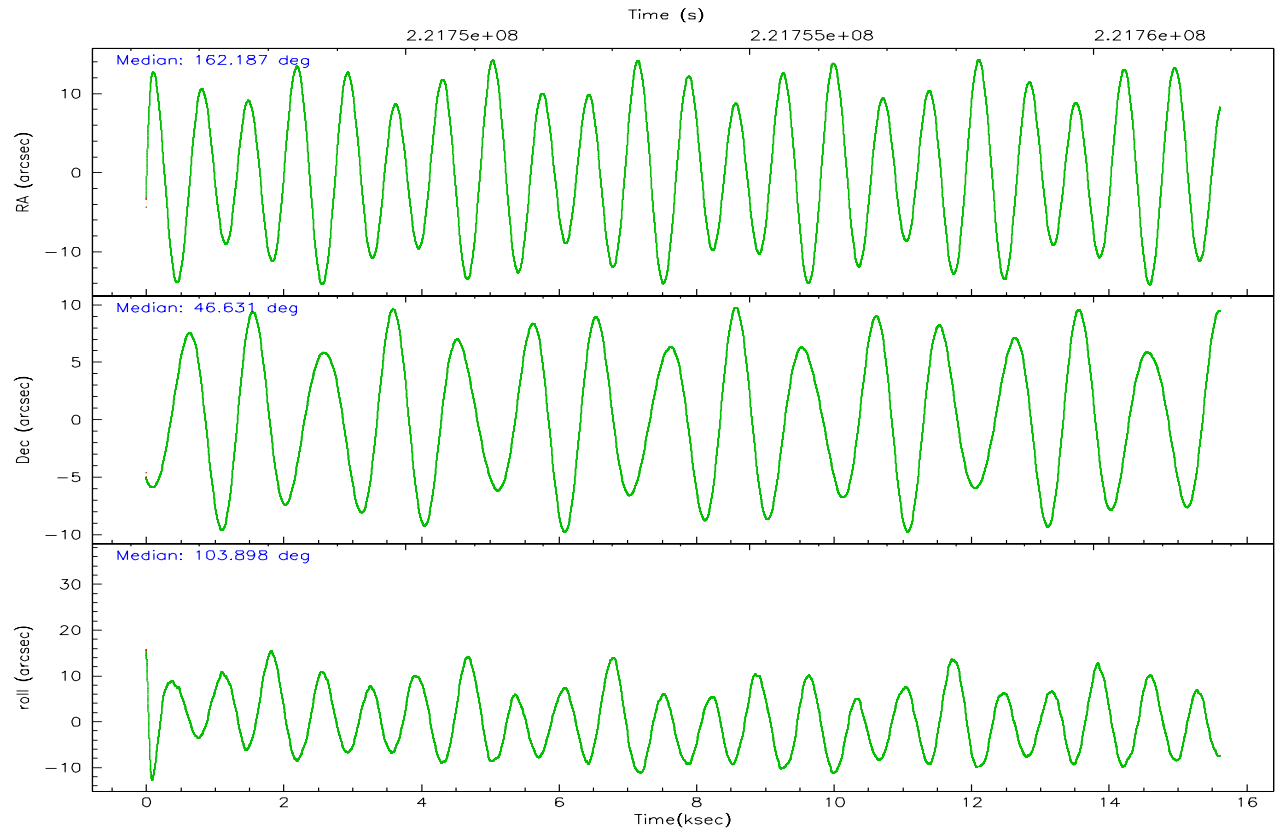
	ccd 2	ccd 3	ccd 5	ccd 6	ccd 7	ccd 8
grade 0 events	5634	5337	11832	5217	3076	9340
	5%	5%	7%	4%	2%	6%
grade 1 events	68	69	155	51	81	96
	0%	0%	0%	0%	0%	0%
grade 2 events	2674	2330	22490	2675	13746	6418
	2%	2%	13%	2%	9%	4%
grade 3 events	1181	1228	1528	1238	2712	3203
	1%	1%	0%	1%	1%	2%
grade 4 events	1141	1143	1503	1288	2539	2873
	1%	1%	0%	1%	1%	2%
grade 5 events	4319	4729	7751	5043	9397	6472
	3%	4%	4%	4%	6%	4%
grade 6 events	2116	2226	40070	2615	32629	7498
	1%	2%	23%	2%	22%	5%
grade 7 events	91491	87137	81903	90602	80369	100377
	84%	83%	48%	83%	55%	73%

## 2.2 Compared Parameters

Parameter	Planned	Actual	Parameter	Planned	Actual
Instrument	ACIS	ACIS	Obspar format version number	6	6
Detector	ACIS-235678	ACIS-235678	Obspar file type	PREDICTED	ACTUAL
Grating	NONE	NONE	Obspar update status	NONE	UPDATED
Data mode	FAINT	FAINT	On-chip summing requested	N	N
Observation mode	POINTING	POINTING	Subarray requested	NONE	NONE
Pointing RA	162.214439	162.1865540592744	Alternating exposures requested	N	N
Pointing Dec	46.612028	46.63137481979888	Primary exposure time	0.000000	3.2
Pointing Roll	103.730944	103.9078563010035			
SIM focus pos (mm)	-0.684267	-0.6828225247311905			
SIM defocus (mm)	0	0.001444936568705701			
SIM translation stage pos (mm)	-190.132523	-190.1425803651734			
SIM translation stage offset (mm)	0	0.01005778216563158			
Observation start time	221746638.184000	221745561.71149			
Observation start date	2005-01-10T12:16:14	2005-01-10T11:59:21			
Observation end time	221761838.184000	221762798.11227			
Observation end date	2005-01-10T16:29:34	2005-01-10T16:46:38			
Read mode	TIMED	TIMED			

## 2.3 Aspect





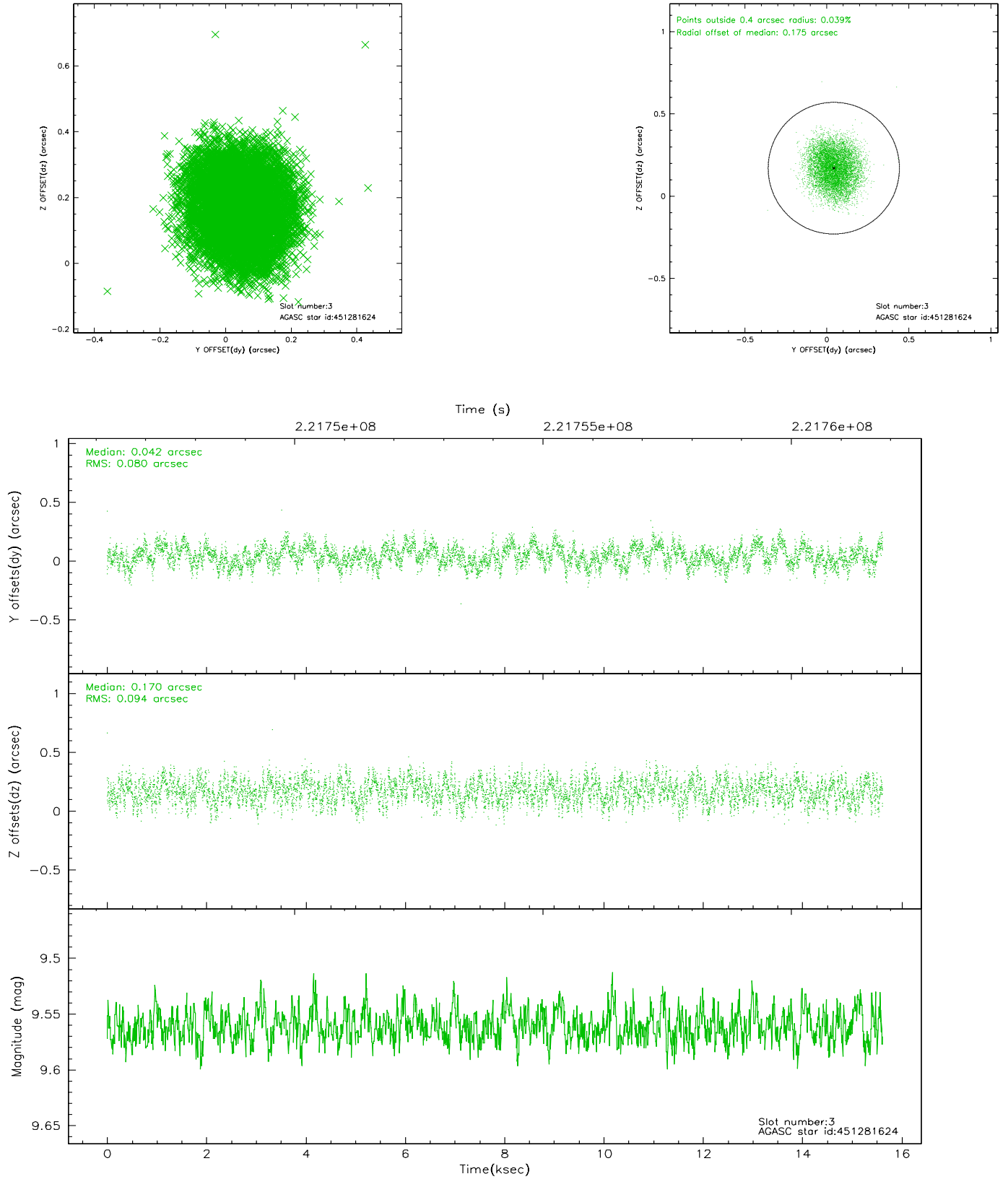
### Slot Statistics

slot	status	id	mag	n_pts	med_dy	med_dz	dr1	dr2	ra	dec	mean_y	mean_z
0	FID	ACIS-S-2	7.10	3810	-0.031	0.006	0.008	0.013	0.000000	0.000000	-760.51	-1731.38
1	FID	ACIS-S-4	7.21	3810	0.052	0.013	0.008	0.014	0.000000	0.000000	2152.67	176.88
2	FID	ACIS-S-5	7.23	3810	-0.053	-0.011	0.009	0.015	0.000000	0.000000	-1813.06	170.76
3	GUIDE	451281624	9.56	7616	0.042	0.170	0.135	0.205	163.194077	46.599941	-602.17	-2346.73
4	GUIDE	451282696	9.78	7615	-0.004	-0.042	0.108	0.179	161.725710	46.479512	-172.26	1289.19
5	GUIDE	451282936	8.57	7620	0.010	-0.022	0.073	0.116	162.459366	46.640990	-41.06	-612.48
6	GUIDE	451283456	8.09	7551	-0.116	-0.048	0.067	0.109	162.810909	46.796278	301.11	-1586.14
7	GUIDE	451287144	9.45	7612	0.066	-0.058	0.096	0.156	162.898016	46.292040	-1515.05	-1380.30

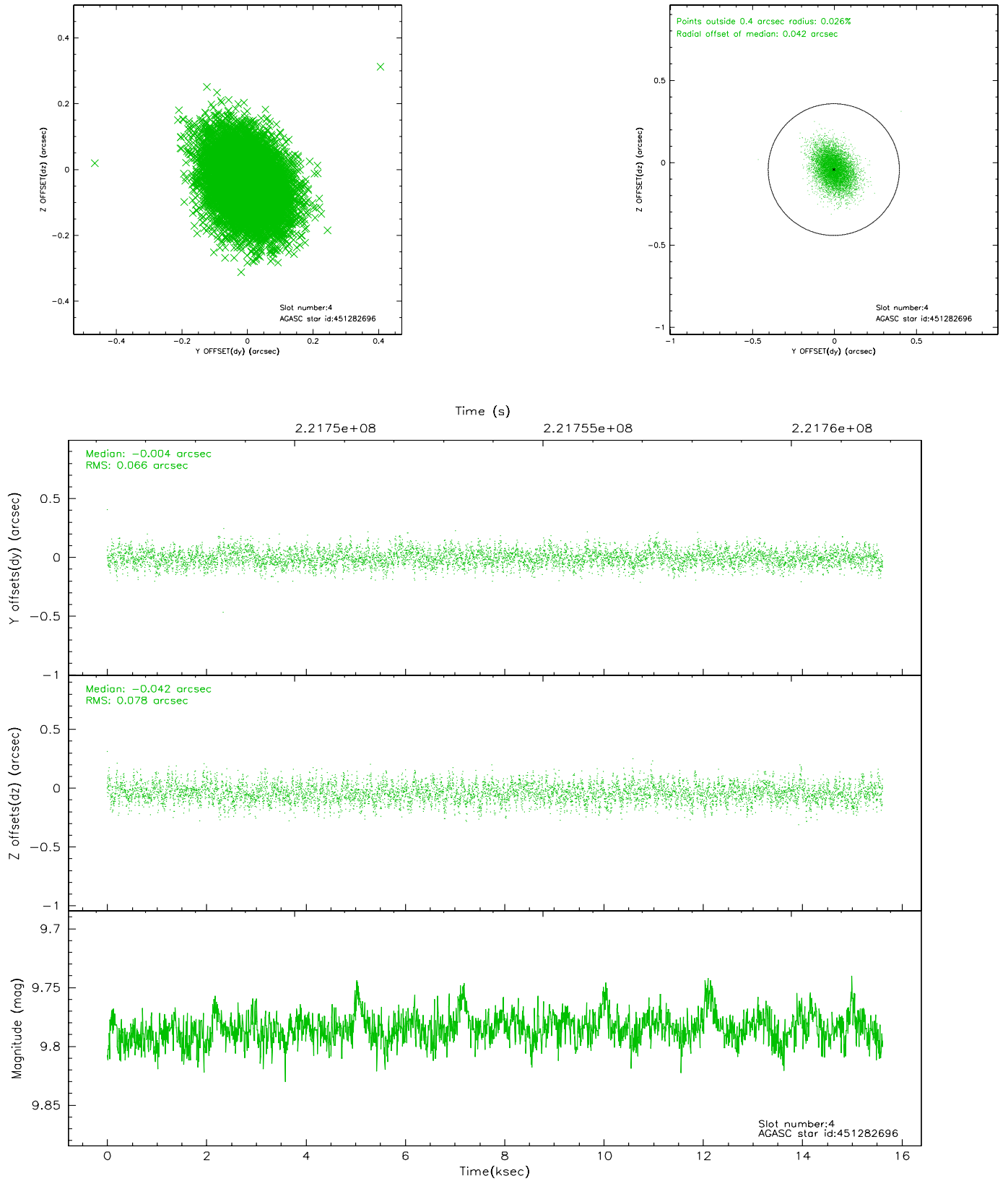


## 2.4 Star Slots

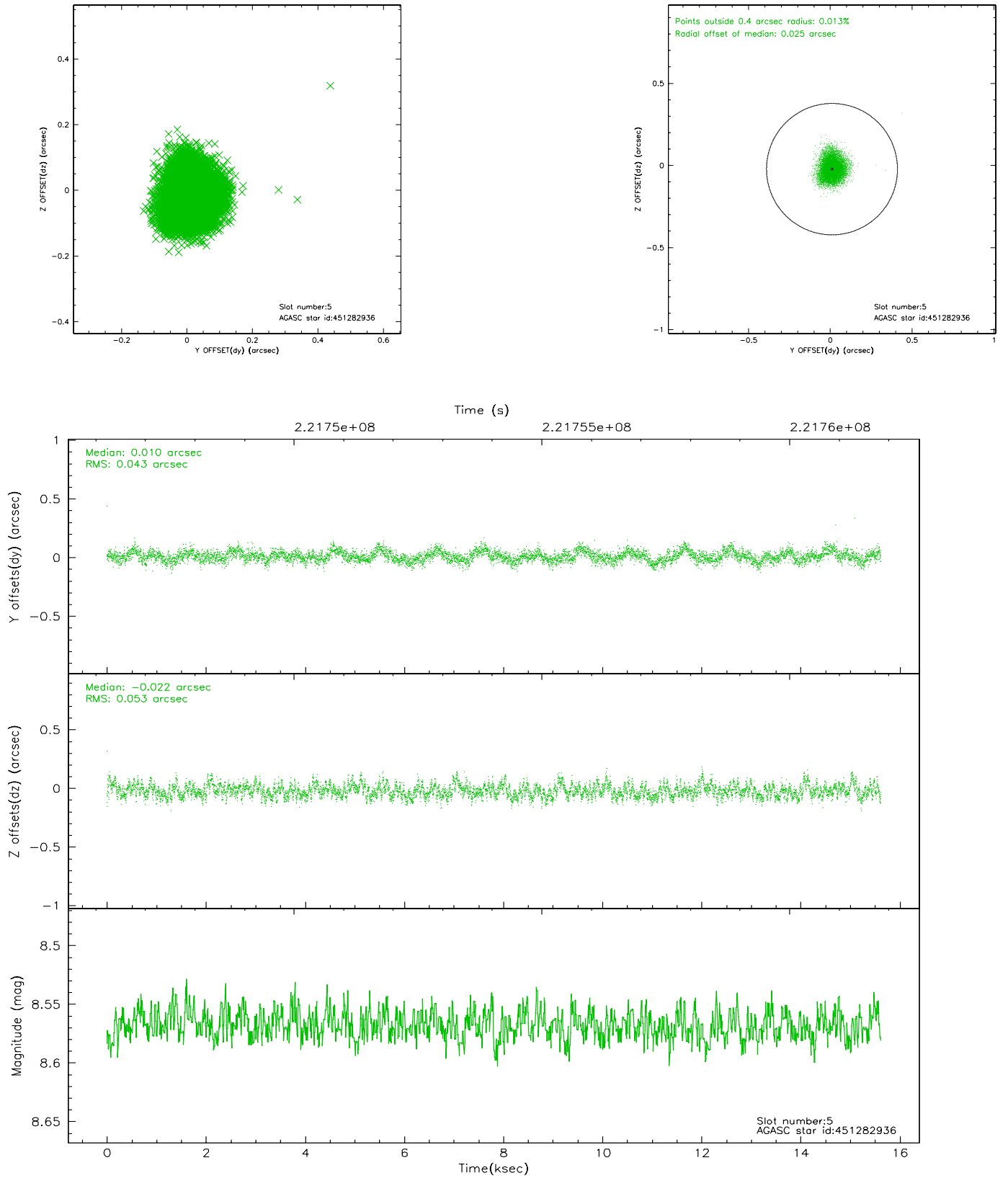
### 2.4.1 Slot 3



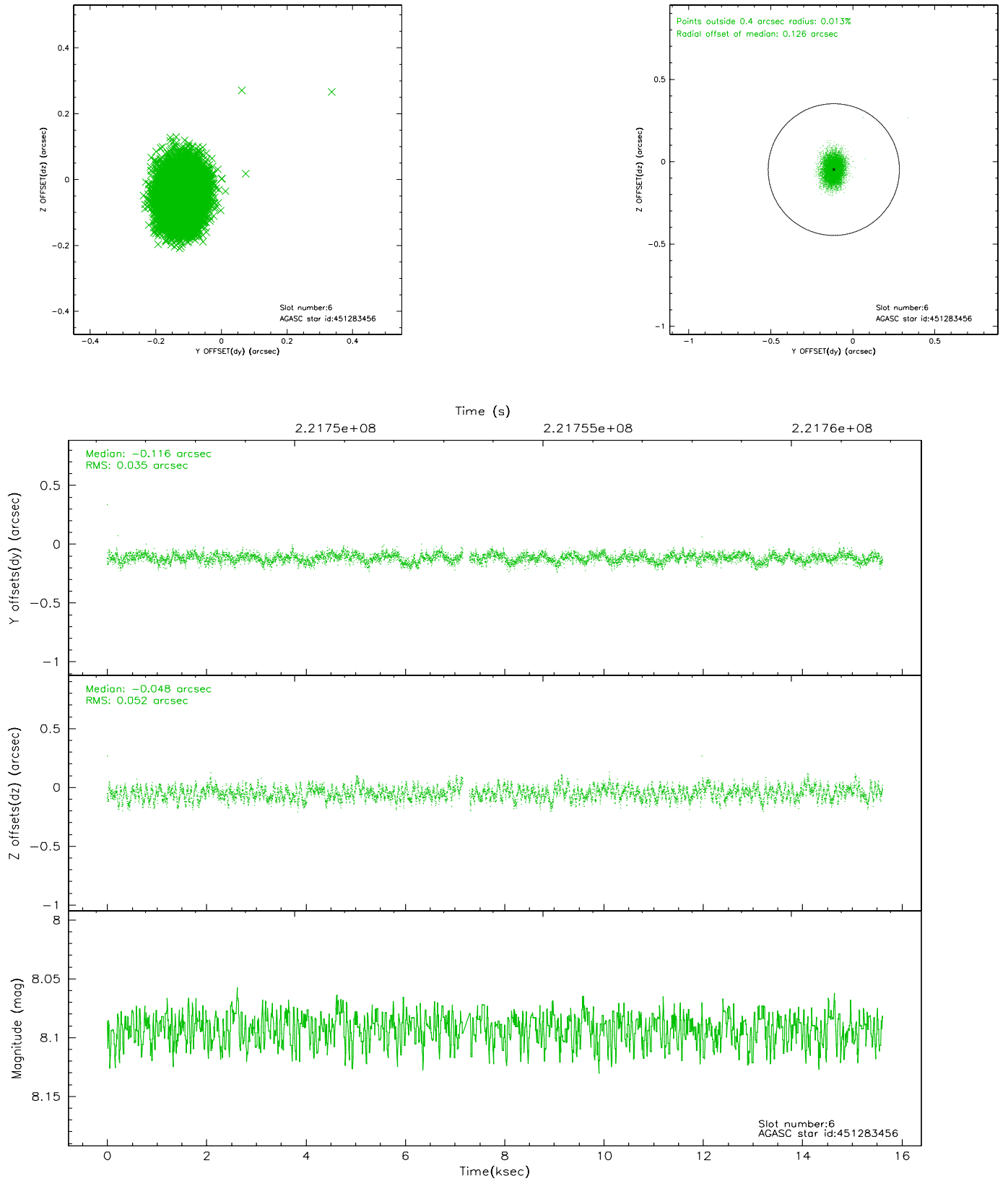
## 2.4.2 Slot 4



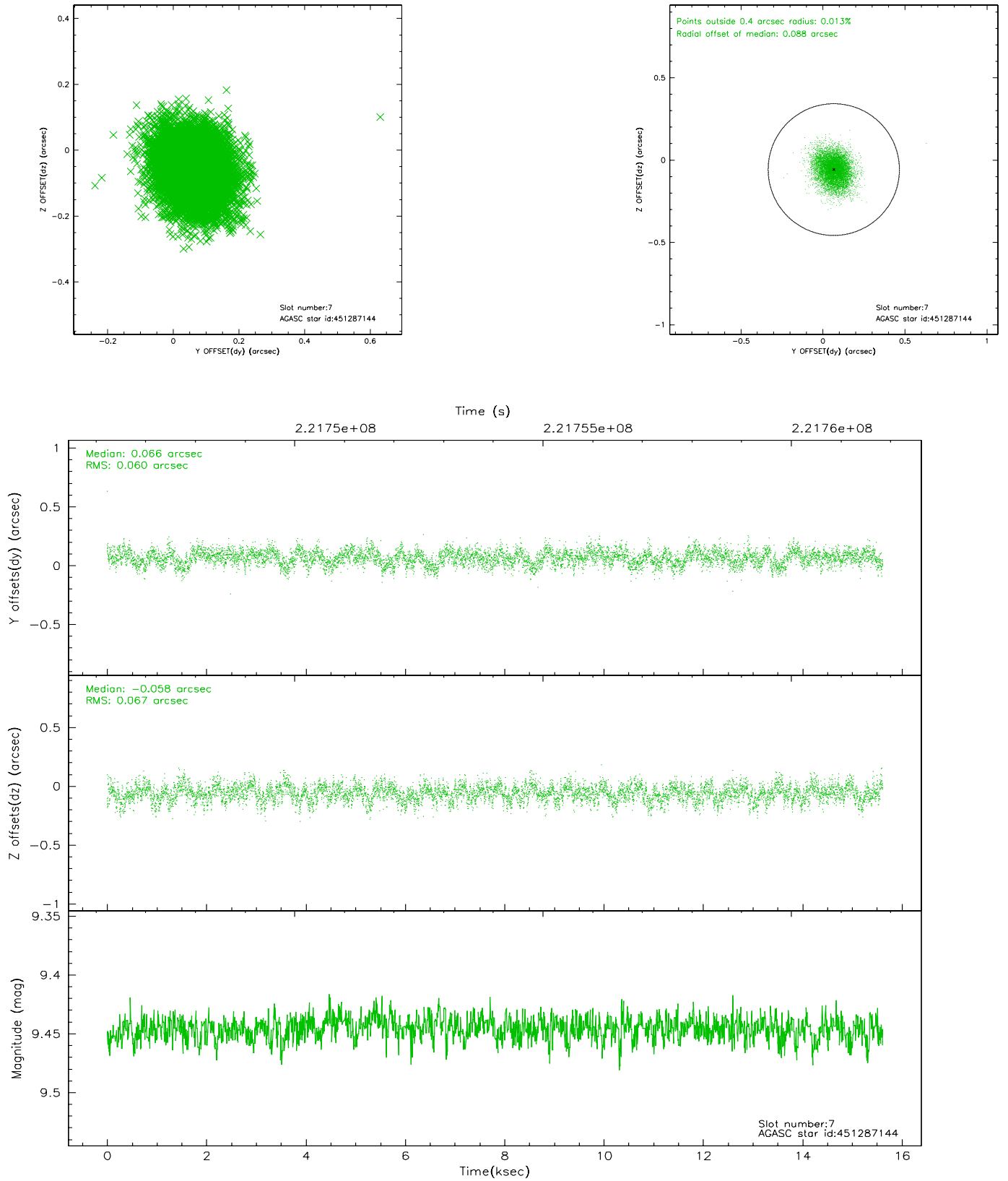
### 2.4.3 Slot 5



## 2.4.4 Slot 6

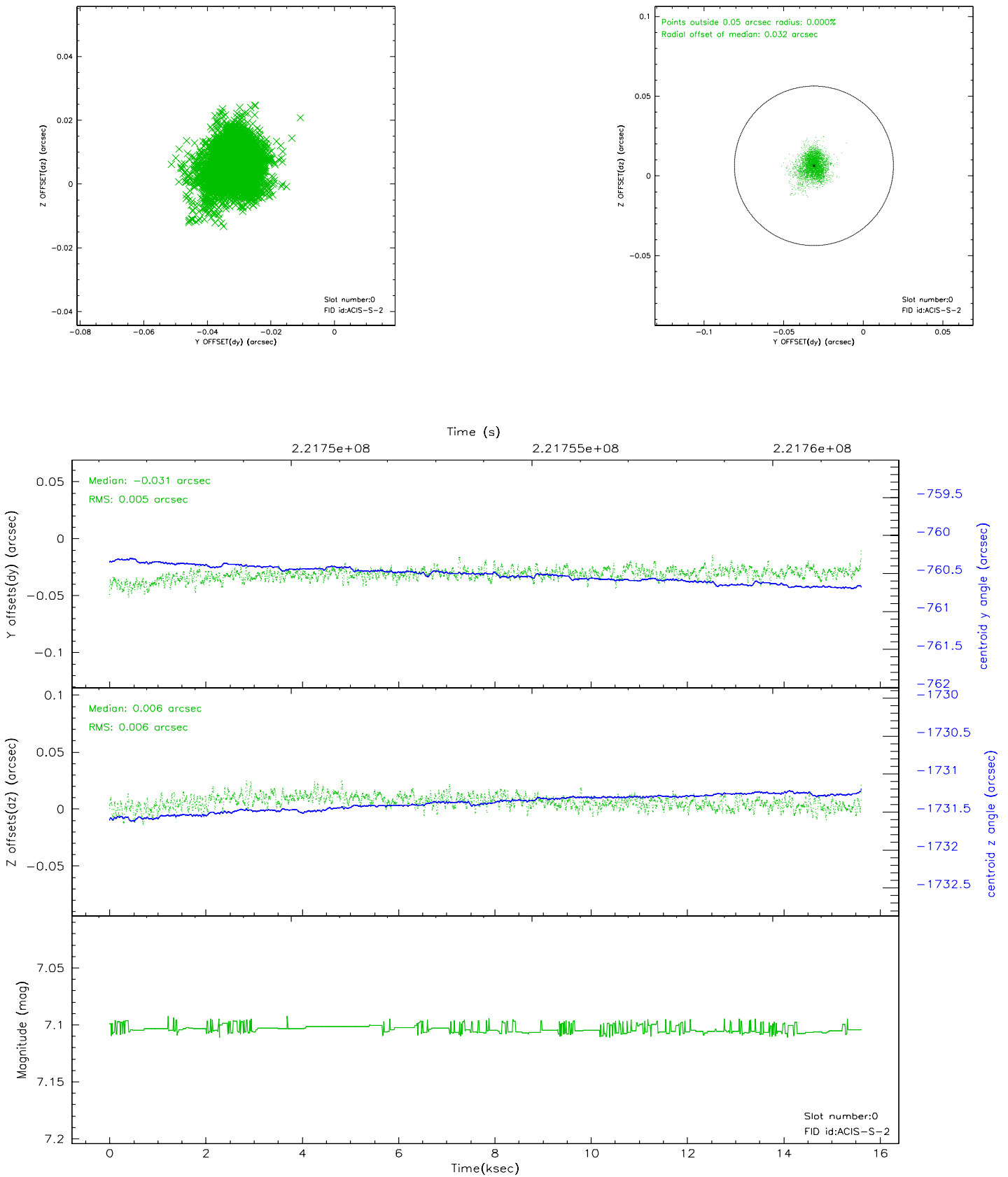


## 2.4.5 Slot 7

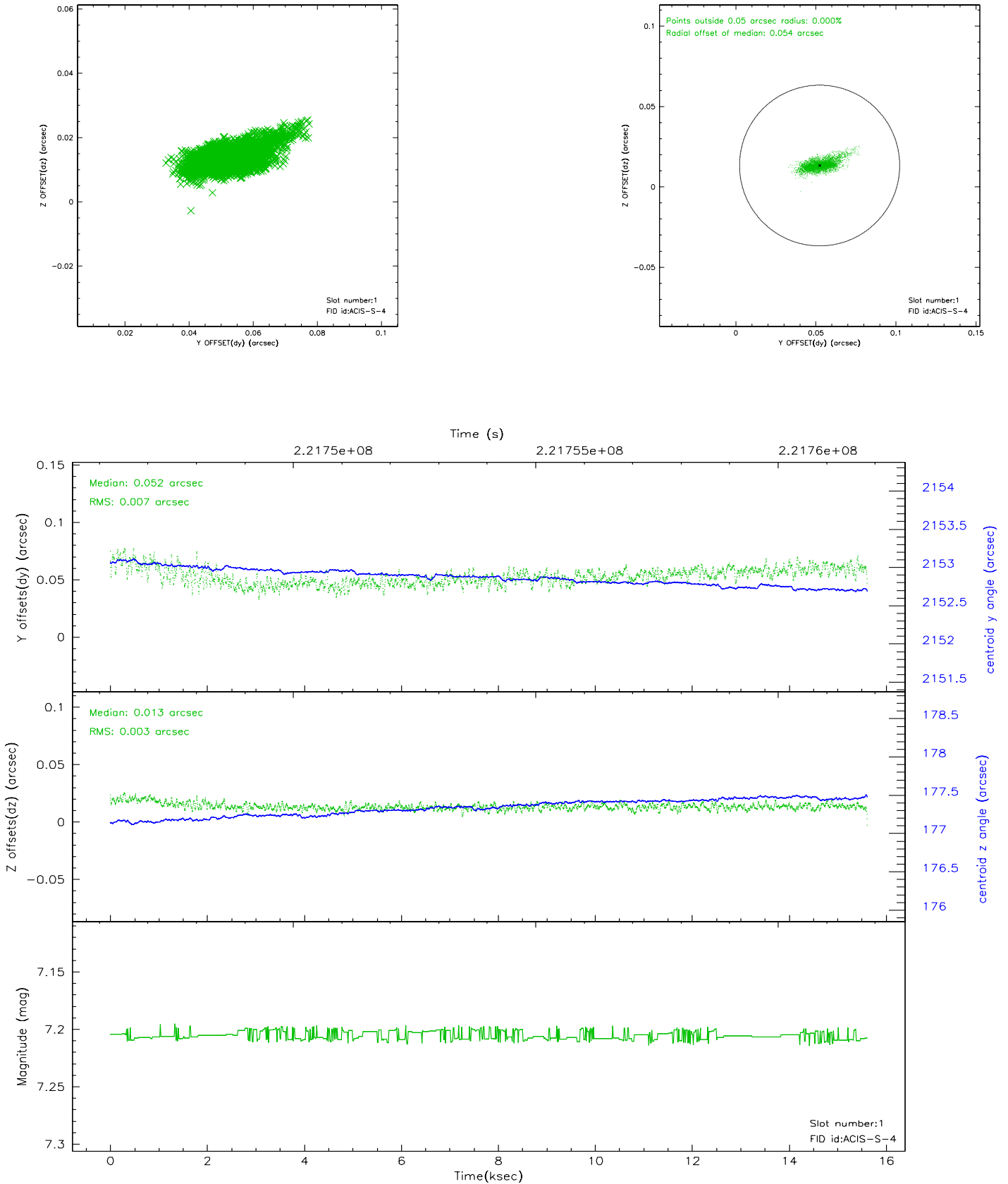


## 2.5 FID Slots

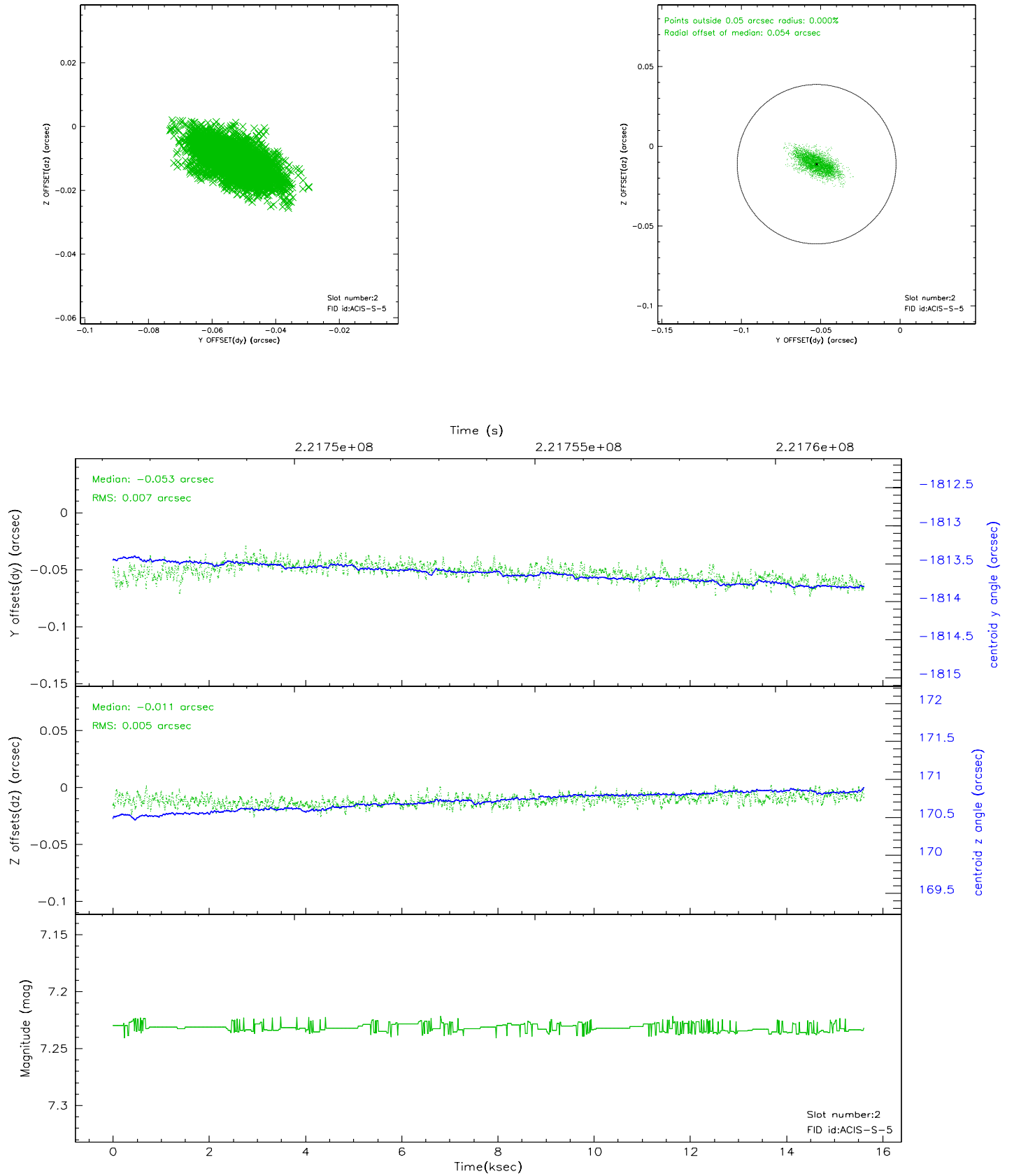
### 2.5.1 Slot 0



## 2.5.2 Slot 1

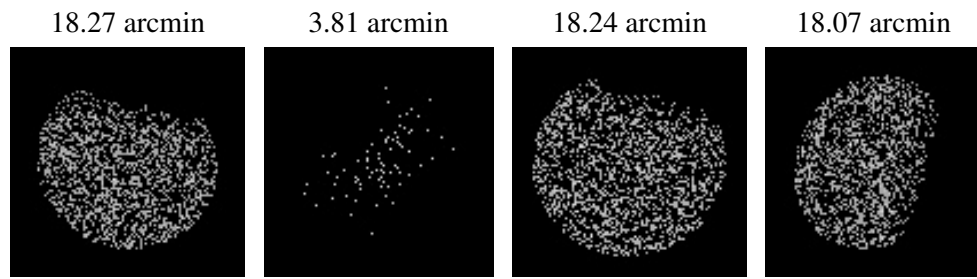


### 2.5.3 Slot 2





### 3 Point Sources



## A Summary

### A.1 Status

V&V Scientist	Beth Sundheim
V&V Date (YYYY-MM-DD)	2006.02.16
V&V Edition	1
V&V Disposition and Status	OK
V&V Charge Time	15.15839

### A.2 Comments

Charge time:

Using existing charge time of 15.15839.