

V&V Reference Report

L2 ASCDS Version : 8.4.3

Observation 55148 - L2 Version 2
Chandra X-Ray Center

L2 Processing Date : Feb 24 2012

Contents

1	Front	2
2	OBI	3
2.1	OBI	3
2.1.1	Images	3
2.1.2	Bias	3
2.1.3	Parameters	4
2.1.4	Events	4
2.2	Compared Parameters	5
2.3	Star Slots	6
2.4	FID Slots	6
A	Summary	7
A.1	Status	7
A.2	Comments	7

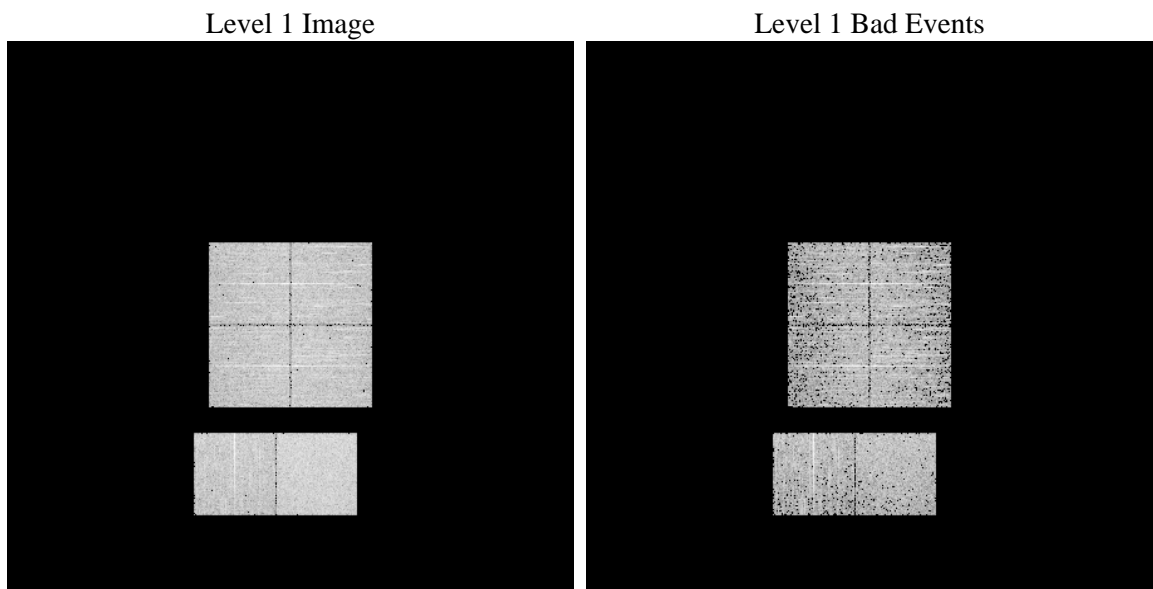
1 Front

seq_num	 	Sequence number
obs_id	55148	Observation id
title	ACIS-012367 diagnostics	Proposal title
observer	CHANDRA engineering request/realtime commanding	Principal investig
object	 	Source name
dtcycle	0	
cycle	P	events from which exps? Prim/Second/Both
ra_targ	0.0	Observer's specified target RA [deg]
dec_targ	0.0	Observer's specified target Dec [deg]
ra_nom	342.01349694593	Nominal RA [deg]
dec_nom	5.9745462753477	Nominal Dec [deg]
roll_nom	265.06304364904	Nominal Roll [deg]
revision	2	Processing version of data
ontime	3288.8991972804	Sum of GTIs [s]
livetime	3247.2531753071	Livetime [s]
ontime0	3288.8581572771	Sum of GTIs [s]
ontime1	3288.8171172738	Sum of GTIs [s]
ontime2	3288.7760772705	Sum of GTIs [s]
ontime3	3288.9402372837	Sum of GTIs [s]
ontime6	3288.7350372672	Sum of GTIs [s]
ontime7	3288.8991972804	Sum of GTIs [s]
l2events	111898	Number of level 2 events

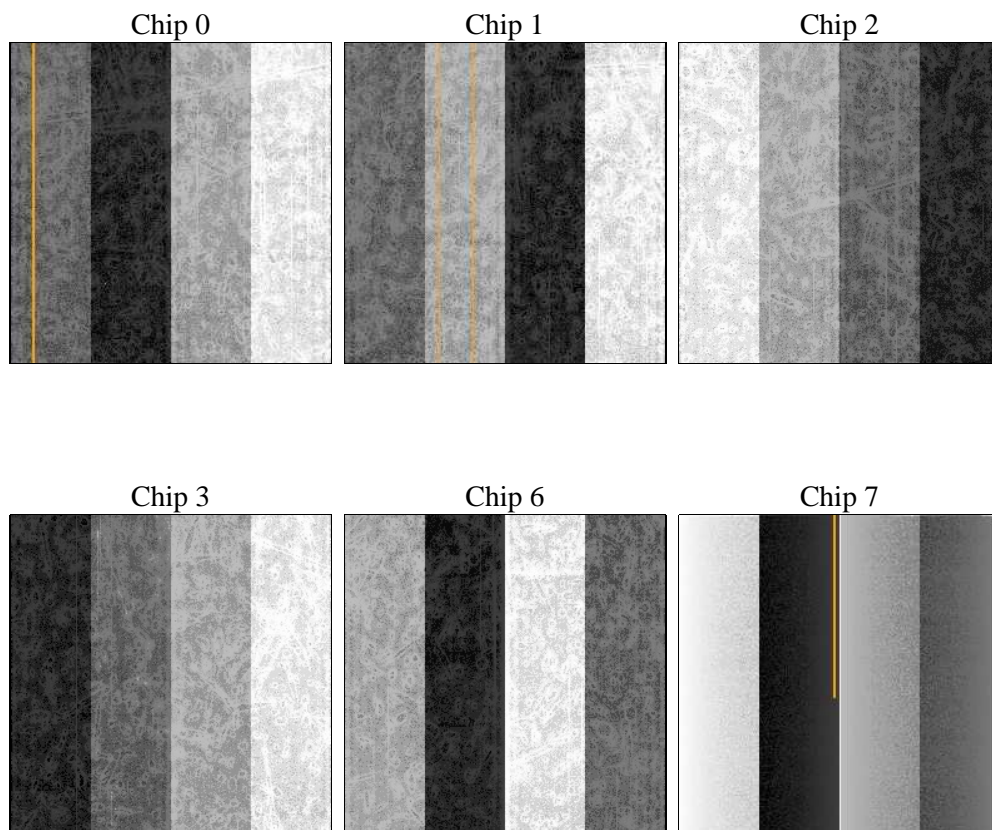
2 OBI

2.1 OBI

2.1.1 Images



2.1.2 Bias



2.1.3 Parameters

obi_num	0	Obi number	sched_exp_time	0.0	[s] Scheduled observation exposure time
ascdsver	8.4.3	Processing system revision	ontime	3288.8991972804	Sum of GTIs [s]
caldsver	4.4.8	 	ontime0	3288.8581572771	Sum of GTIs [s]
date	2012-02-24T04:26:25	Date and time of file creation	ontime1	3288.8171172738	Sum of GTIs [s]
revision	2	Processing version of data	ontime2	3288.7760772705	Sum of GTIs [s]
			ontime3	3288.9402372837	Sum of GTIs [s]
			ontime6	3288.7350372672	Sum of GTIs [s]
			ontime7	3288.8991972804	Sum of GTIs [s]
			l1events	236550	Number of level 1 events

2.1.4 Events

	ccd 0	ccd 1	ccd 2	ccd 3	ccd 6	ccd 7		ccd 0	ccd 1	ccd 2	ccd 3	ccd 6	ccd 7
level 1 events	36314	37478	35802	38408	38916	49632	grade 0 events	9574	9008	9644	9664	9270	4546
rejected events	18158	19465	18046	20619	20658	21279		26%	24%	26%	25%	23%	9%
rejected %	50%	51%	50%	53%	53%	42%	grade 1 events	62	51	57	58	42	41
								0%	0%	0%	0%	0%	0%
							grade 2 events	3401	3627	3026	3086	3524	6341
								9%	9%	8%	8%	9%	12%
							grade 3 events	1204	1184	1226	1207	1141	2376
								3%	3%	3%	3%	2%	4%
							grade 4 events	1193	1189	1205	1215	1151	2452
								3%	3%	3%	3%	2%	4%
							grade 5 events	1138	1169	1081	1271	1219	3195
								3%	3%	3%	3%	3%	6%
							grade 6 events	2784	3005	2655	2617	3172	12638
								7%	8%	7%	6%	8%	25%
							grade 7 events	16958	18245	16908	19290	19397	18043
								46%	48%	47%	50%	49%	36%

2.2 Compared Parameters

Parameter	Planned	Actual	Parameter	Planned	Actual
Instrument	ACIS	ACIS	Obspar format version number	7	7
Detector	ACIS-012367	ACIS-012367	Obspar file type	PREDICTED	ACTUAL
Grating	NONE	NONE	Obspar update status	NONE	UPDATED
Data mode	FAINT	FAINT	Number of optional ACIS chips dropped	0	0
Observation mode	SECONDARY	SECONDARY	On-chip summing requested	N	N
[deg] Pointing RA	0	342.0134969459256	Subarray requested	NONE	NONE
[deg] Pointing Dec	0	5.974546275347651	Alternating exposures requested	N	N
[deg] Pointing Roll	0.0	265.0630436490377	[s] Primary exposure time	3.2	3.2
[mm] SIM focus pos	-1.429586	-1.428180813131781			
[mm] SIM defocus	0.1037507710433287	0.1051558262725154			
[mm] SIM translation stage pos	250.455976	250.466033080201			
[mm] SIM translation stage offset	0	-0.01005468664627074			
[s] Observation start time (MET)	433892017.019016	433892015.99402			
Observation start date	2011-10-01T21:33:37	2011-10-01T21:33:35			
[s] Observation end time (MET)	433897197.369287	433897196.3443			
Observation end date	2011-10-01T22:59:57	2011-10-01T22:59:56			
Read mode	TIMED	TIMED			

2.3 Star Slots

2.4 FID Slots

A Summary

A.1 Status

V&V Scientist	Jen Lauer
V&V Date (YYYY-MM-DD)	2012.02.24
V&V Edition	1
V&V Disposition and Status	OK
V&V Charge Time	3.2888991972804

A.2 Comments