

# V&V Reference Report

## L2 ASCDS Version : 7.6.7.1

Observation 5368 - L2 Version 003  
Chandra X-Ray Center

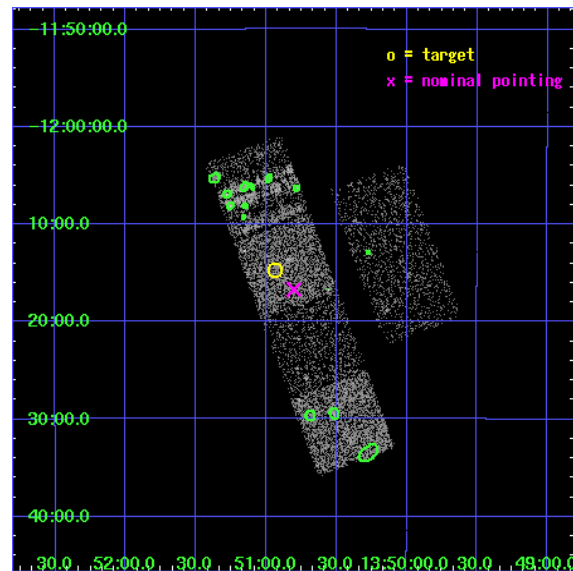
L2 Processing Date : Apr 3 2006

## Contents

<b>1</b>	<b>Front</b>	<b>2</b>
<b>2</b>	<b>OBI</b>	<b>3</b>
2.1	OBI . . . . .	3
2.1.1	Images . . . . .	3
2.1.2	Bias . . . . .	3
2.1.3	Parameters . . . . .	4
2.1.4	Events . . . . .	4
2.2	Compared Parameters . . . . .	5
2.3	Aspect . . . . .	6
2.4	Star Slots . . . . .	9
2.4.1	Slot 4 . . . . .	9
2.4.2	Slot 5 . . . . .	10
2.4.3	Slot 6 . . . . .	11
2.4.4	Slot 7 . . . . .	12
2.5	FID Slots . . . . .	13
2.5.1	Slot 0 . . . . .	13
2.5.2	Slot 1 . . . . .	14
2.5.3	Slot 2 . . . . .	15
<b>3</b>	<b>Point Sources</b>	<b>16</b>
<b>A</b>	<b>Summary</b>	<b>17</b>
A.1	Status . . . . .	17
A.2	Comments . . . . .	17

# 1 Front

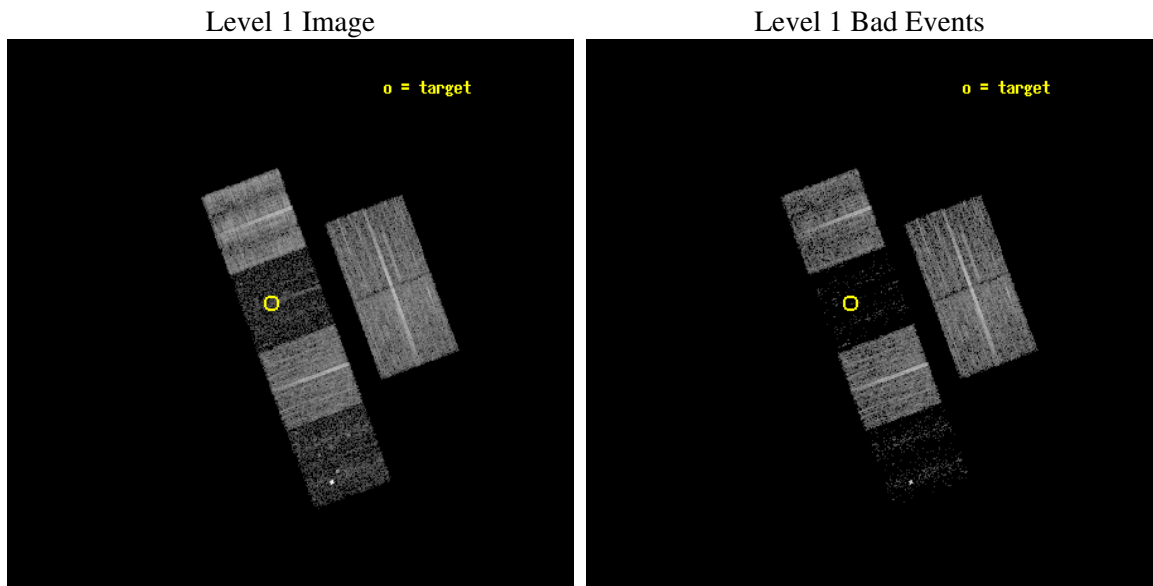
seq_num	100056
obs_id	5368
title	Comet 9P/Tempel 1 During the Deep Impact Encounter
observer	Dr. Carey Lisse
object	9P/Tempel 1
dtcycle	0
cycle	P
ra_targ	207.733569
dec_targ	-12.244569
ra_nom	207.70066594436
dec_nom	-12.278392342143
roll_nom	249.70940791727
revision	3
ontime	8316.7999690175
livetime	8211.4876400341
ontime2	8316.7999690175
ontime3	8316.7999690175
ontime5	8316.7999690175
ontime6	8316.7999690175
ontime7	8316.7999690175
ontime8	8313.5590087175
l2events	14565



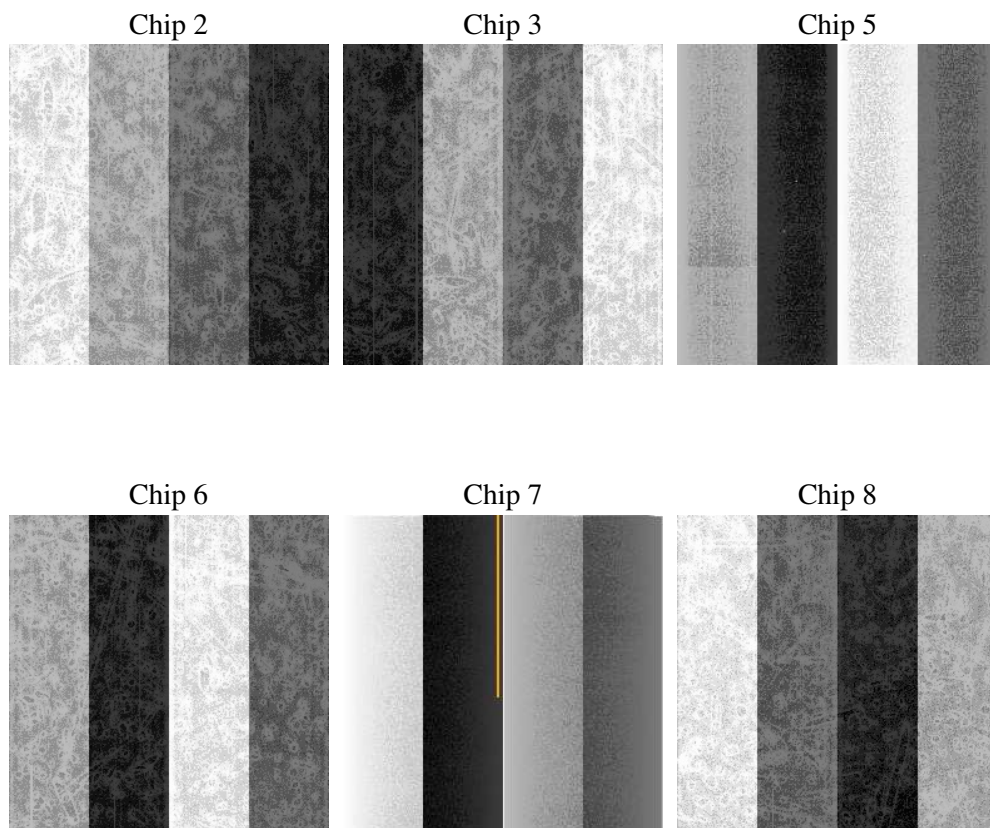
## 2 OBI

### 2.1 OBI

#### 2.1.1 Images



#### 2.1.2 Bias



### 2.1.3 Parameters

obi_num	0
ascdsver	7.6.7.1
caldsver	3.2.1
date	2006-04-03T18:40:01
revision	3

sched_exp_time	8350.000000
ontime	8578.9302126467
ontime2	8578.9302126467
ontime3	8578.9302126467
ontime5	8578.9302126467
ontime6	8578.9302126467
ontime7	8578.9302126467
ontime8	8575.6892523468
l1events	174805

### 2.1.4 Events

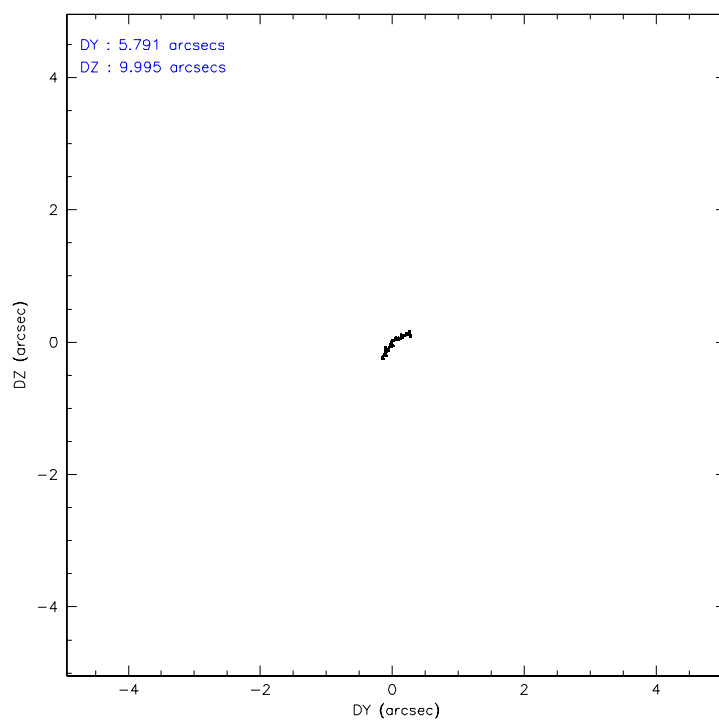
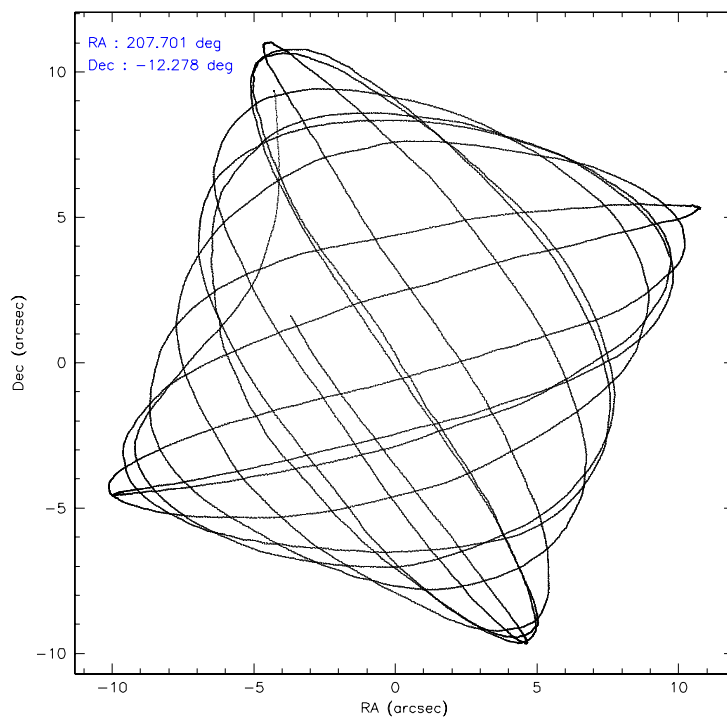
	ccd 2	ccd 3	ccd 5	ccd 6	ccd 7	ccd 8
level 1 events	41670	34284	9621	36149	5755	47326
rejected events	39786	33043	3189	34345	1413	31186
rejected %	95%	96%	33%	95%	24%	65%

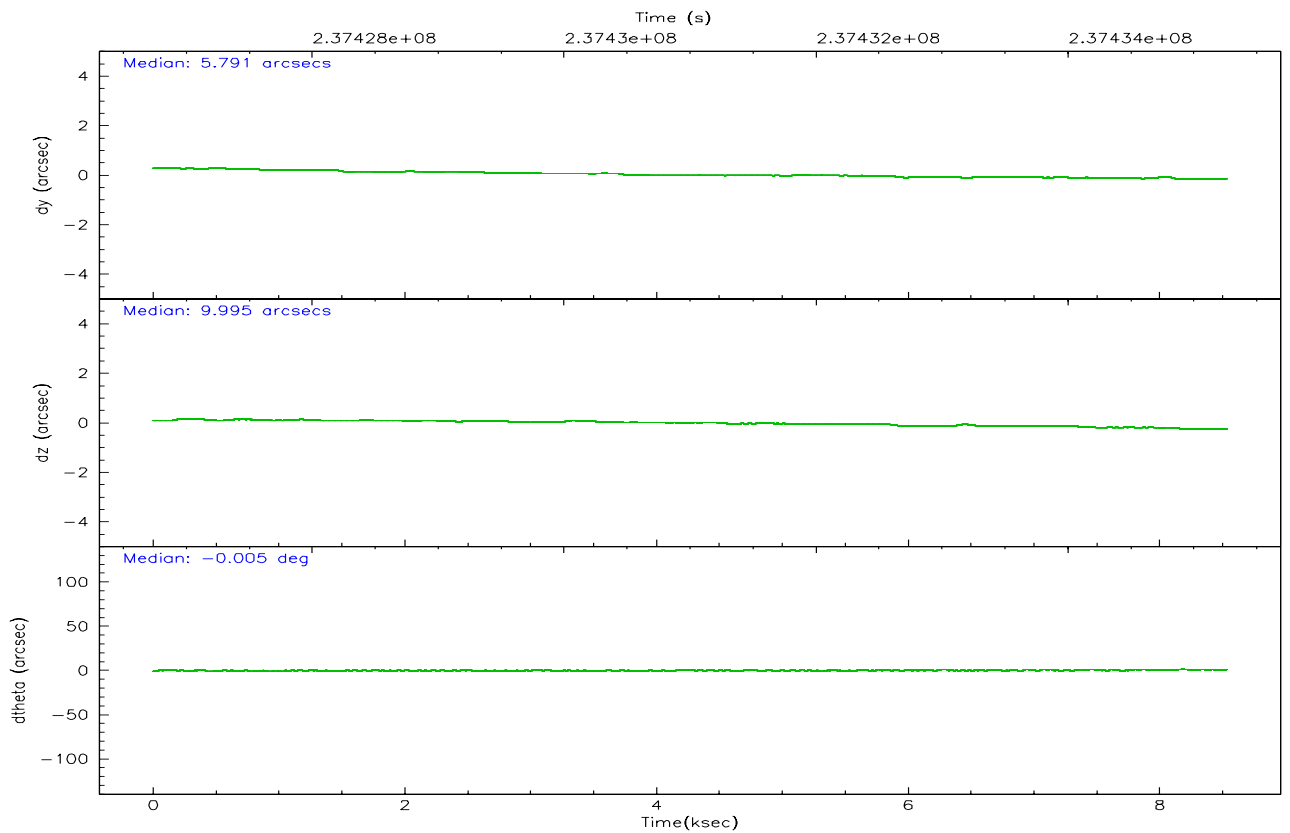
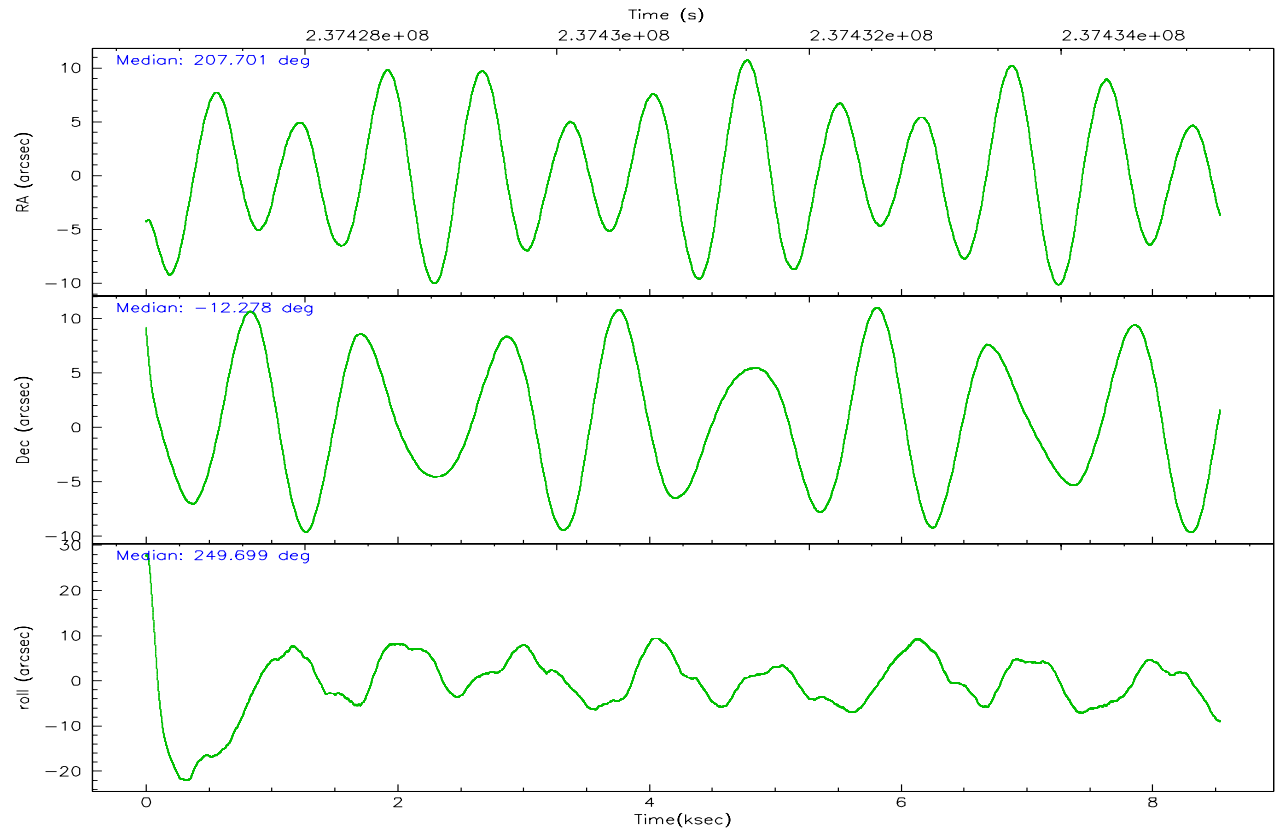
	ccd 2	ccd 3	ccd 5	ccd 6	ccd 7	ccd 8
grade 0 events	907	600	1783	936	1085	5422
	2%	1%	18%	2%	18%	11%
grade 1 events	17	13	18	12	18	67
	0%	0%	0%	0%	0%	0%
grade 2 events	443	163	2102	323	1583	2781
	1%	0%	21%	0%	27%	5%
grade 3 events	180	206	1379	235	622	2684
	0%	0%	14%	0%	10%	5%
grade 4 events	255	192	709	245	613	2336
	0%	0%	7%	0%	10%	4%
grade 5 events	65	26	595	37	143	264
	0%	0%	6%	0%	2%	0%
grade 6 events	174	124	637	125	576	3521
	0%	0%	6%	0%	10%	7%
grade 7 events	39629	32960	2398	34236	1115	30251
	95%	96%	24%	94%	19%	63%

## 2.2 Compared Parameters

Parameter	Planned	Actual	Parameter	Planned	Actual
Instrument	ACIS	ACIS	Obspar format version number	6	6
Detector	ACIS-235678	ACIS-235678	Obspar file type	PREDICTED	ACTUAL
Grating	NONE	NONE	Obspar update status	NONE	UPDATED
Data mode	VFAINT	VFAINT	On-chip summing requested	N	N
Observation mode	POINTING	POINTING	Subarray requested	NONE	NONE
Pointing RA	207.695618	207.7006659443569	Alternating exposures requested	N	N
Pointing Dec	-12.251565	-12.27839234214302	Primary exposure time	0.000000	3.2
Pointing Roll	249.551632	249.709407917268			
SIM focus pos (mm)	-0.684267	-0.6828225247311905			
SIM defocus (mm)	0	0.001444936568705701			
SIM translation stage pos (mm)	-190.132523	-190.1400660498719			
SIM translation stage offset (mm)	0	0.00754346686406393			
Observation start time	237426921.184000	237425959.12392			
Observation start date	2005-07-10T23:54:17	2005-07-10T23:39:19			
Observation end time	237435271.184000	237435536.72436			
Observation end date	2005-07-11T02:13:27	2005-07-11T02:18:56			
Read mode	TIMED	TIMED			

## 2.3 Aspect





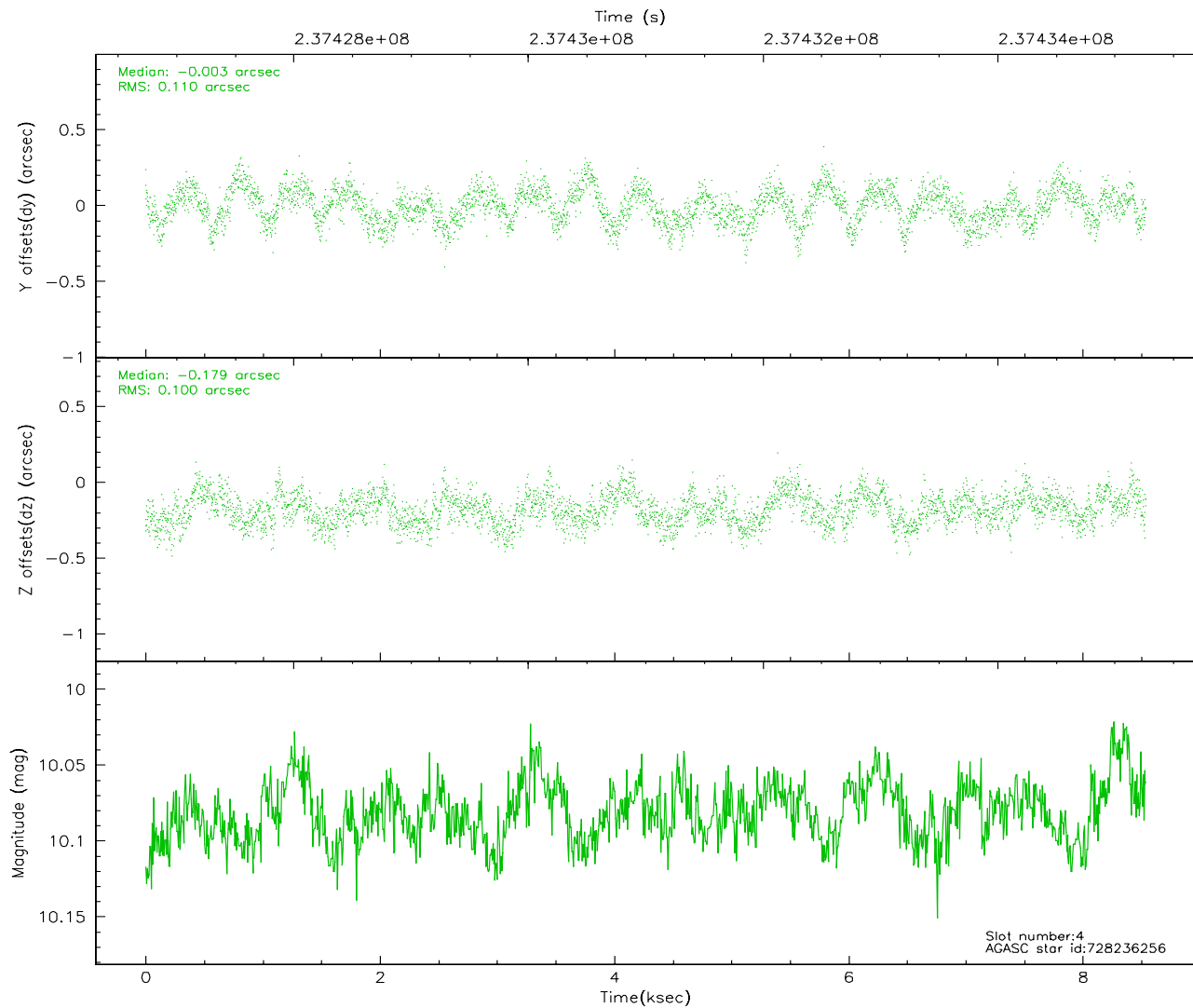
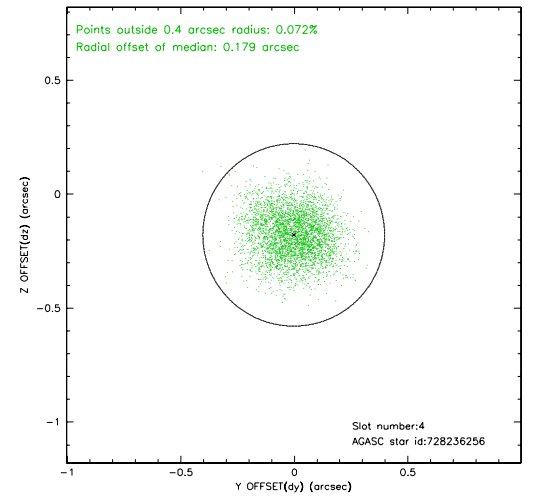
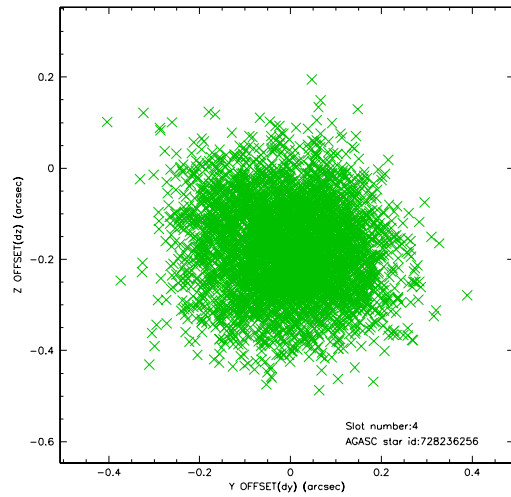
### Slot Statistics

slot	status	id	mag	n_pts	med_dy	med_dz	dr1	dr2	ra	dec	mean_y	mean_z
0	FID	ACIS-S-2	7.10	2083	-0.065	-0.016	0.008	0.012	0.000000	0.000000	-758.58	-1731.25
1	FID	ACIS-S-4	7.21	2083	0.085	0.035	0.006	0.010	0.000000	0.000000	2154.52	176.66
2	FID	ACIS-S-5	7.23	2083	-0.051	-0.011	0.008	0.013	0.000000	0.000000	-1810.61	170.96
3	OMITTED		0.00	0	0.000	0.000	0.000	0.000	0.000000	0.000000	0.00	0.00
4	GUIDE	728236256	10.08	4160	-0.003	-0.179	0.161	0.251	207.126175	-12.399367	1200.44	-1689.06
5	GUIDE	728243160	10.06	4097	-0.130	0.040	0.159	0.268	208.309960	-11.797392	-2286.00	1457.66
6	GUIDE	728246264	10.55	4165	0.104	0.013	0.184	0.289	207.655266	-11.635836	-2027.44	-907.46
7	GUIDE	728633928	10.35	4162	0.024	0.130	0.184	0.288	208.253445	-12.706055	849.79	2408.29

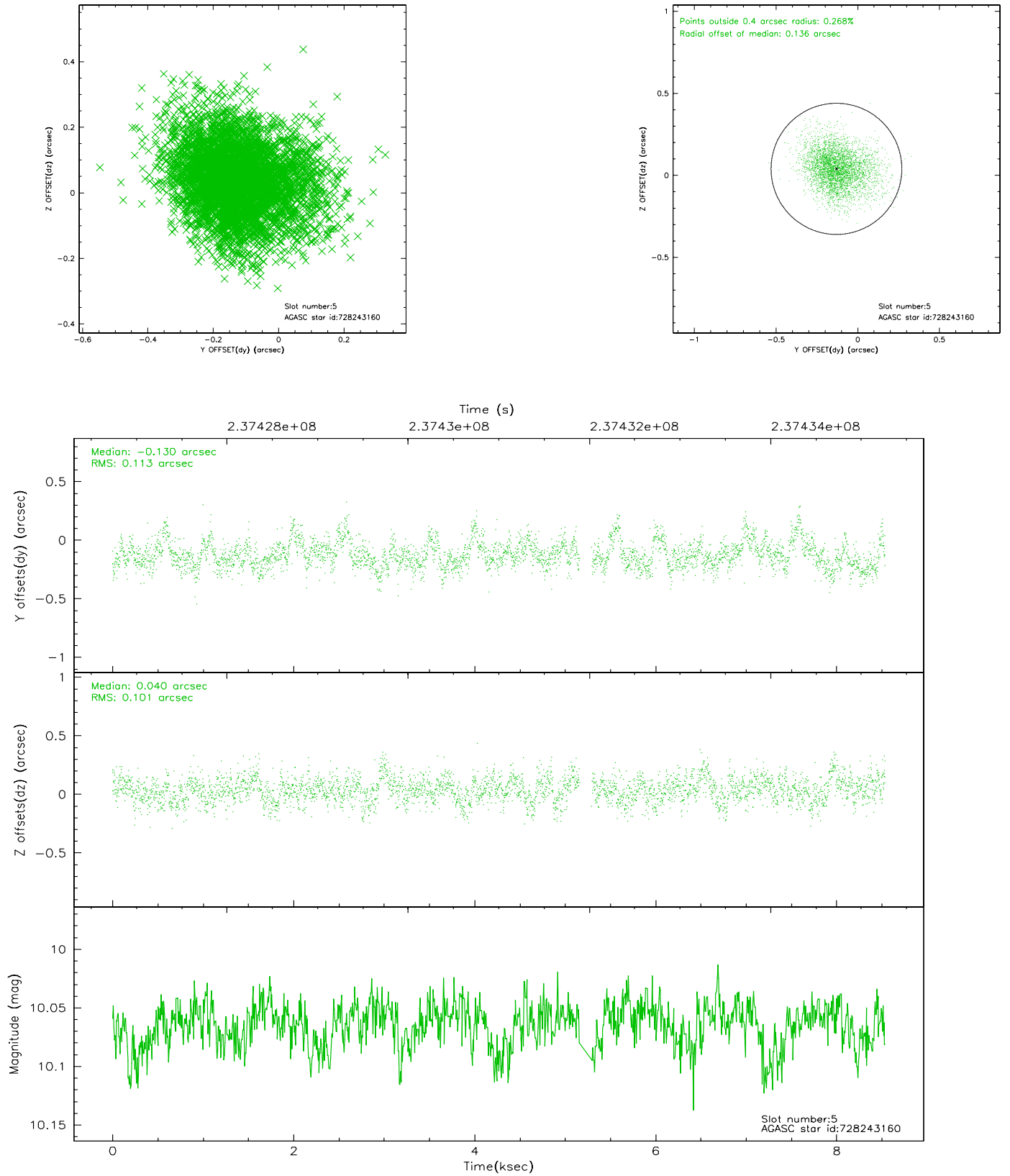


## 2.4 Star Slots

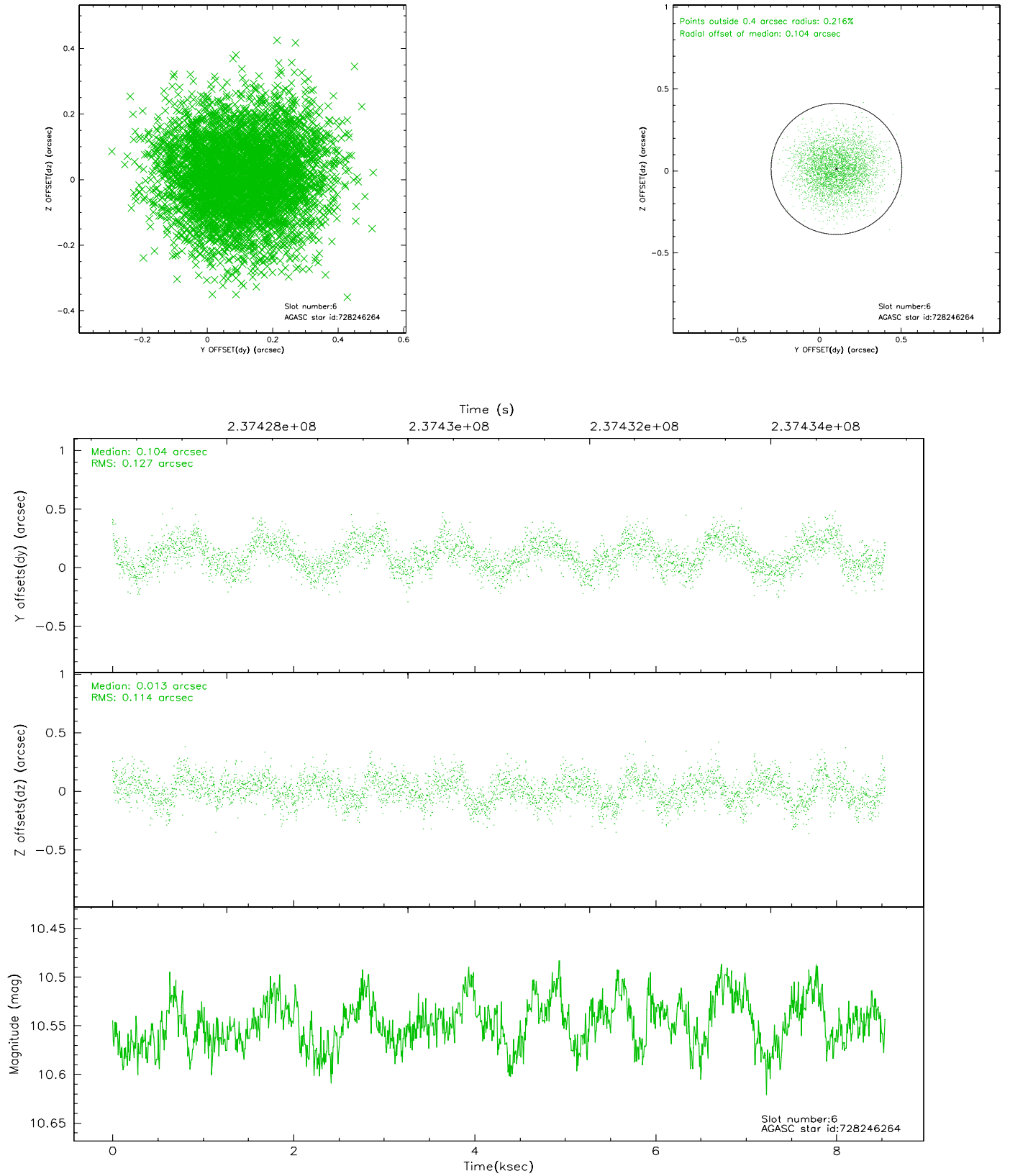
### 2.4.1 Slot 4



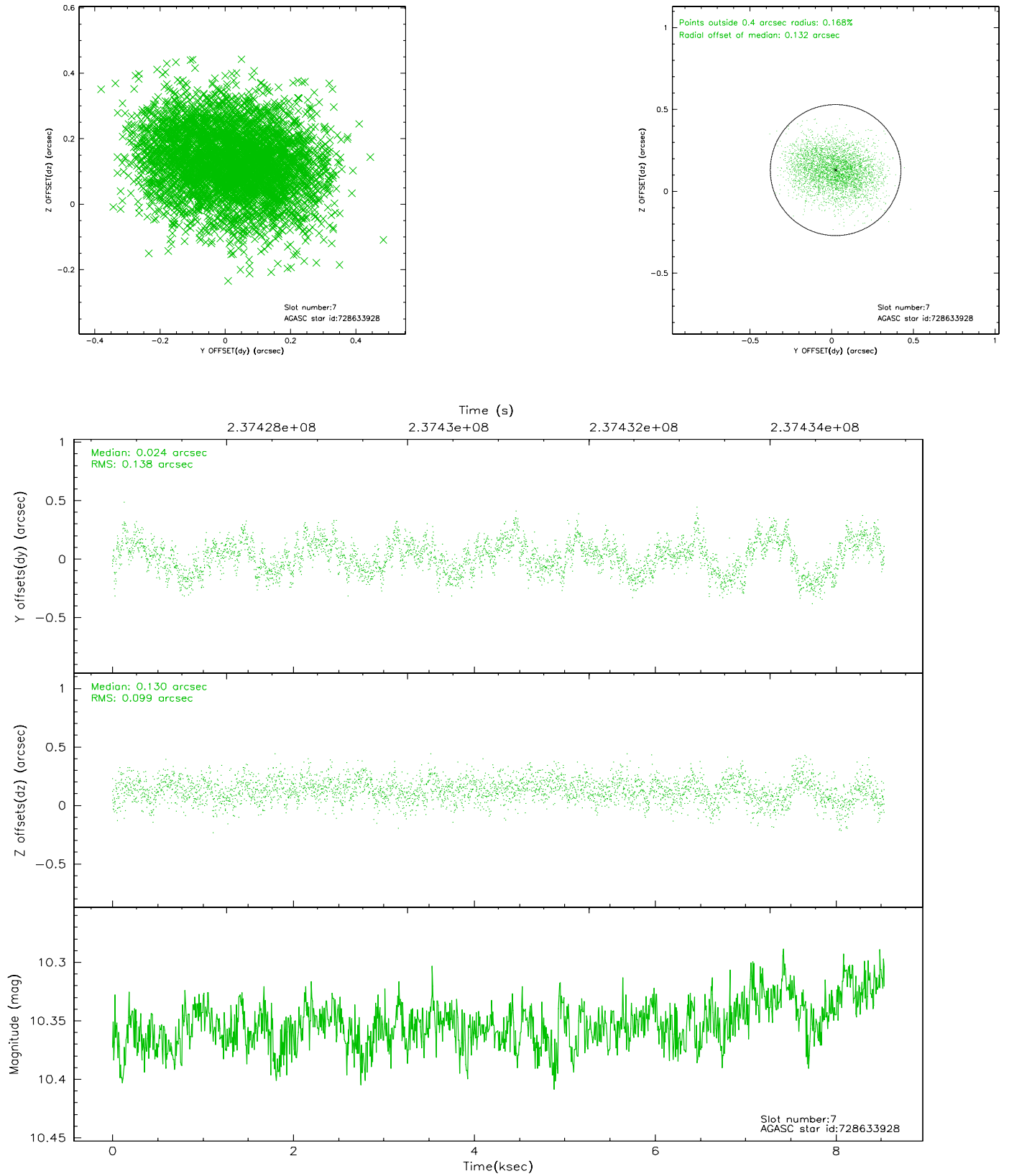
## 2.4.2 Slot 5



### 2.4.3 Slot 6

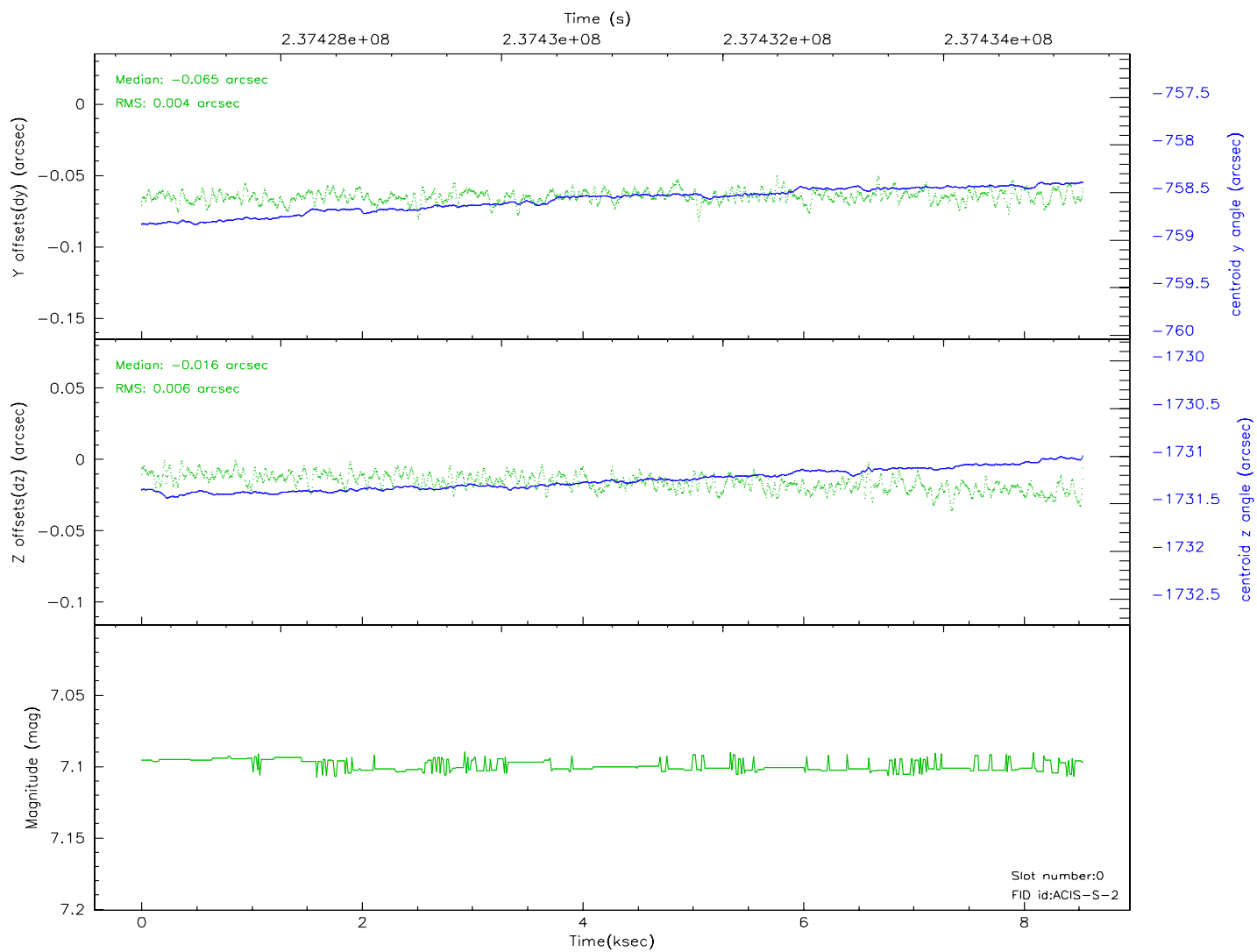
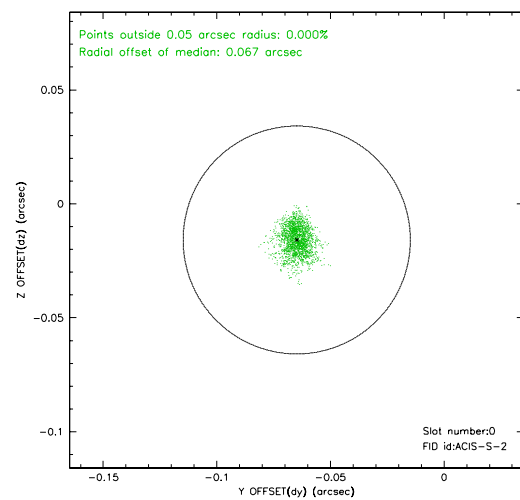
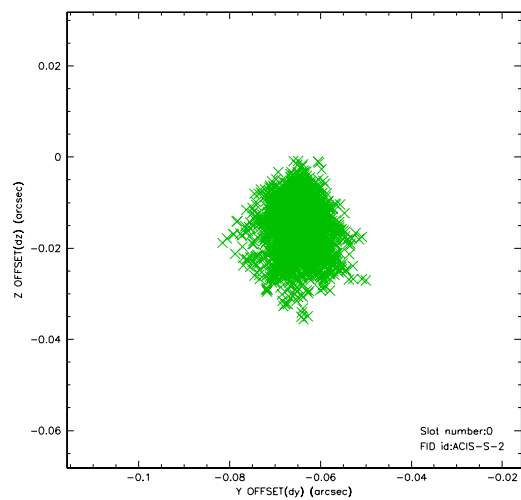


## 2.4.4 Slot 7

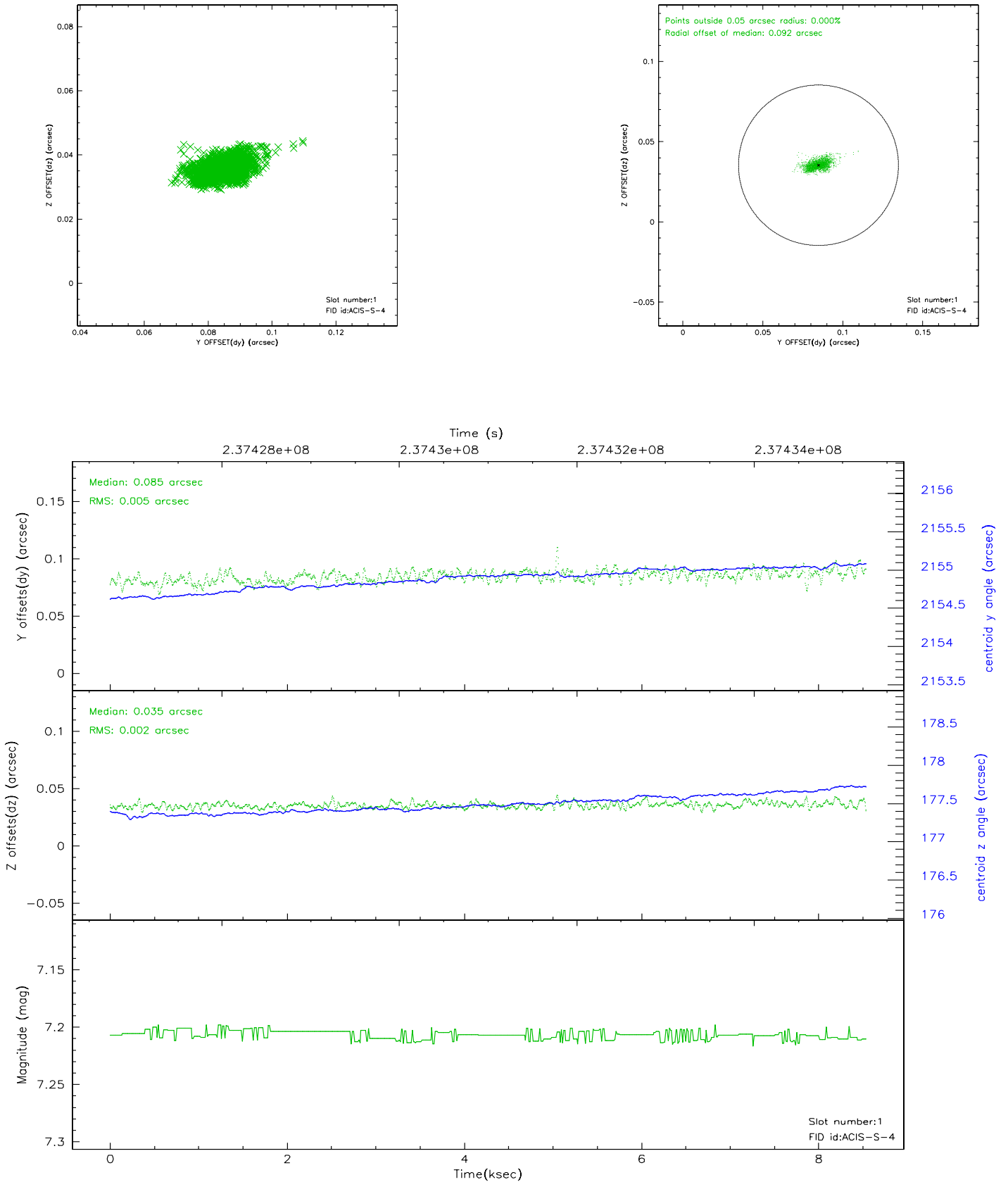


## 2.5 FID Slots

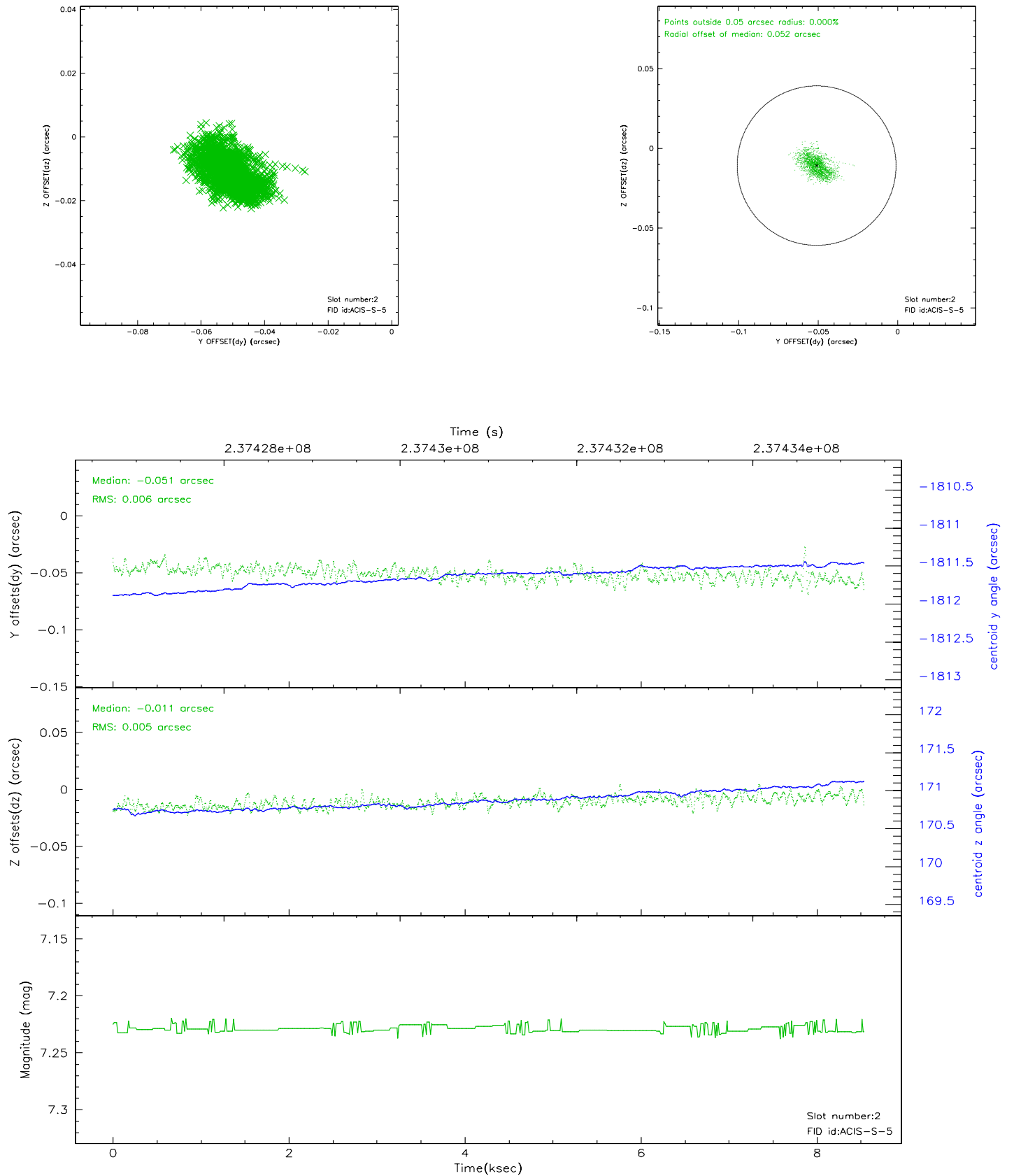
### 2.5.1 Slot 0



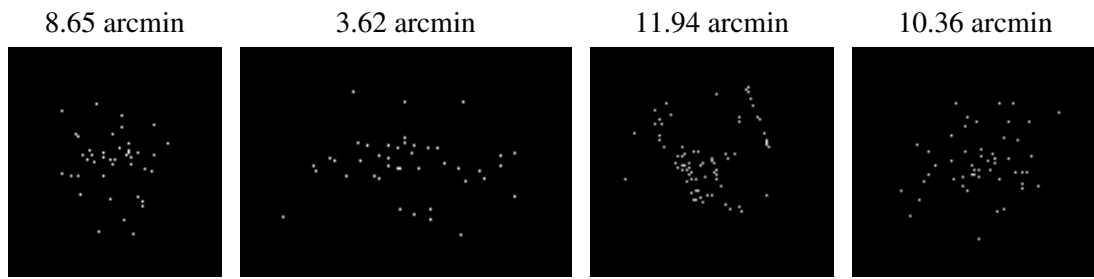
## 2.5.2 Slot 1



### 2.5.3 Slot 2



### 3 Point Sources





## A Summary

### A.1 Status

V&V Scientist	Jen Lauer
V&V Date (YYYY-MM-DD)	2006.04.04
V&V Edition	1
V&V Disposition and Status	OK
V&V Charge Time	8.316799

### A.2 Comments