

V&V Reference Report

L2 ASCDS Version : 7.6.7.1

Observation 5348 - L2 Version 001
Chandra X-Ray Center

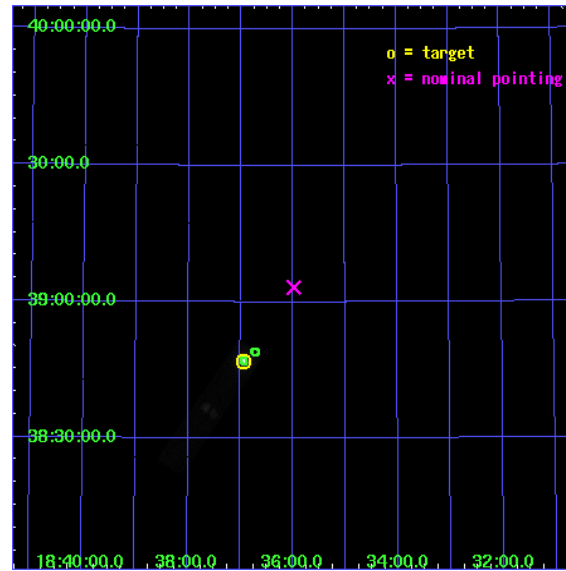
L2 Processing Date : Apr 12 2006

Contents

1	Front	2
2	OBI	3
2.1	OBI	3
2.1.1	Images	3
2.1.2	Parameters	4
2.1.3	Events	4
2.2	Compared Parameters	5
2.3	Aspect	6
2.4	Star Slots	9
2.4.1	Slot 3	9
2.4.2	Slot 4	10
2.4.3	Slot 5	11
2.4.4	Slot 6	12
2.4.5	Slot 7	13
2.5	FID Slots	14
2.5.1	Slot 0	14
2.5.2	Slot 1	15
2.5.3	Slot 2	16
3	Point Sources	17
A	Summary	18
A.1	Status	18
A.2	Comments	18

1 Front

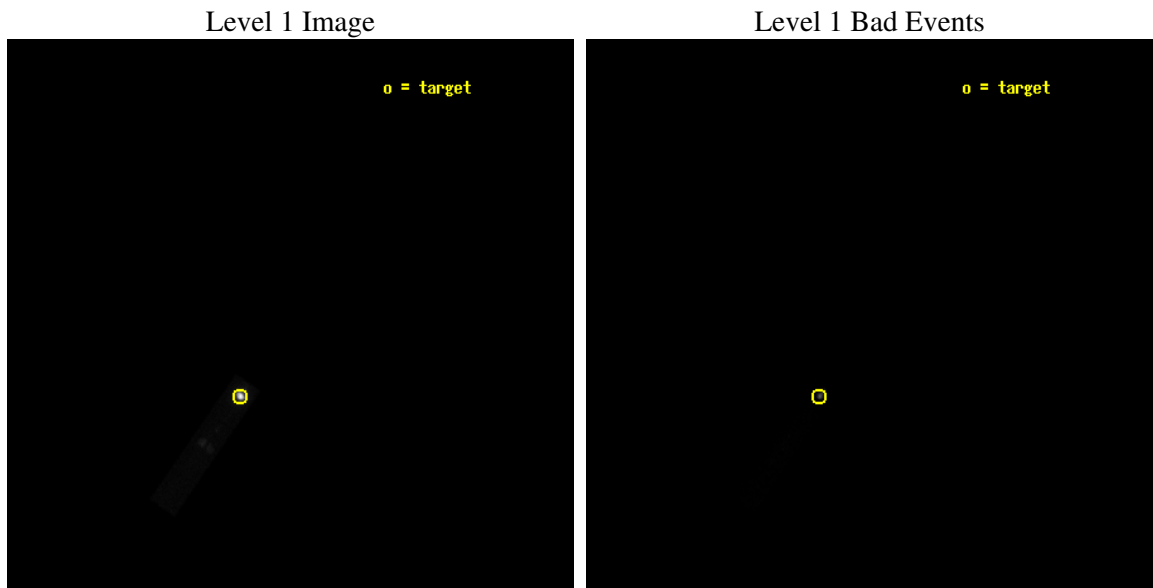
seq_num	290445
obs_id	5348
title	Monitoring the health of the HRC UV Ion shield
observer	Dr. CXC Calibration
object	Vega
ra_targ	279.235
dec_targ	38.783778
ra_nom	278.99466930755
dec_nom	39.054044007334
roll_nom	304.78782158653
revision	2
ontime	3178.7813925445
livetime	1108.6454512397
l2events	564729



2 OBI

2.1 OBI

2.1.1 Images



2.1.2 Parameters

obi_num	0
ascdsver	7.6.7.1
caldbver	3.2.1
date	2006-04-12T05:11:35
revision	2

sched_exp_time	3000.000000
ontime	3178.7813925445
l1events	632753

2.1.3 Events

Level 1 Events

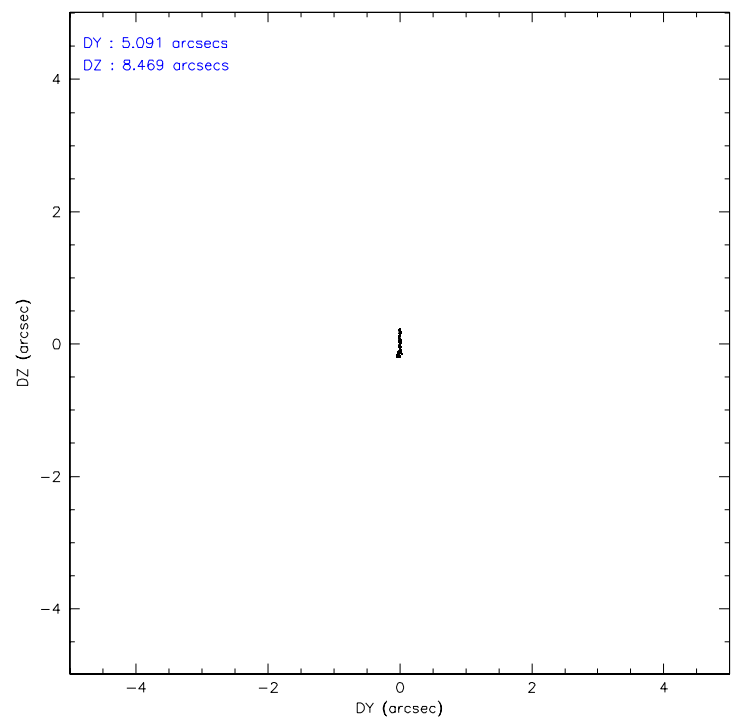
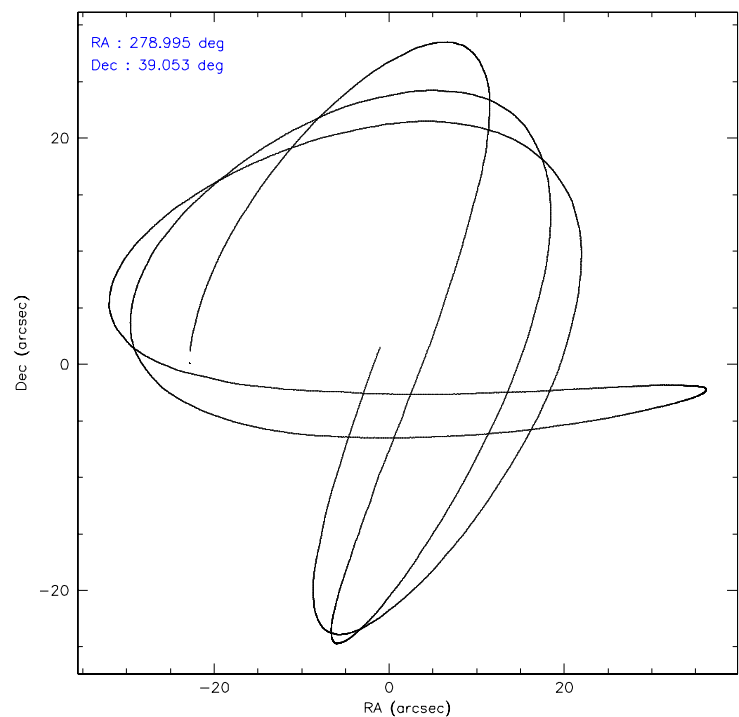
	segment 1	segment 2	segment 3
level 1 events	4178	260	628315
rejected events	4154	253	55278
rejected %	99%	97%	8%

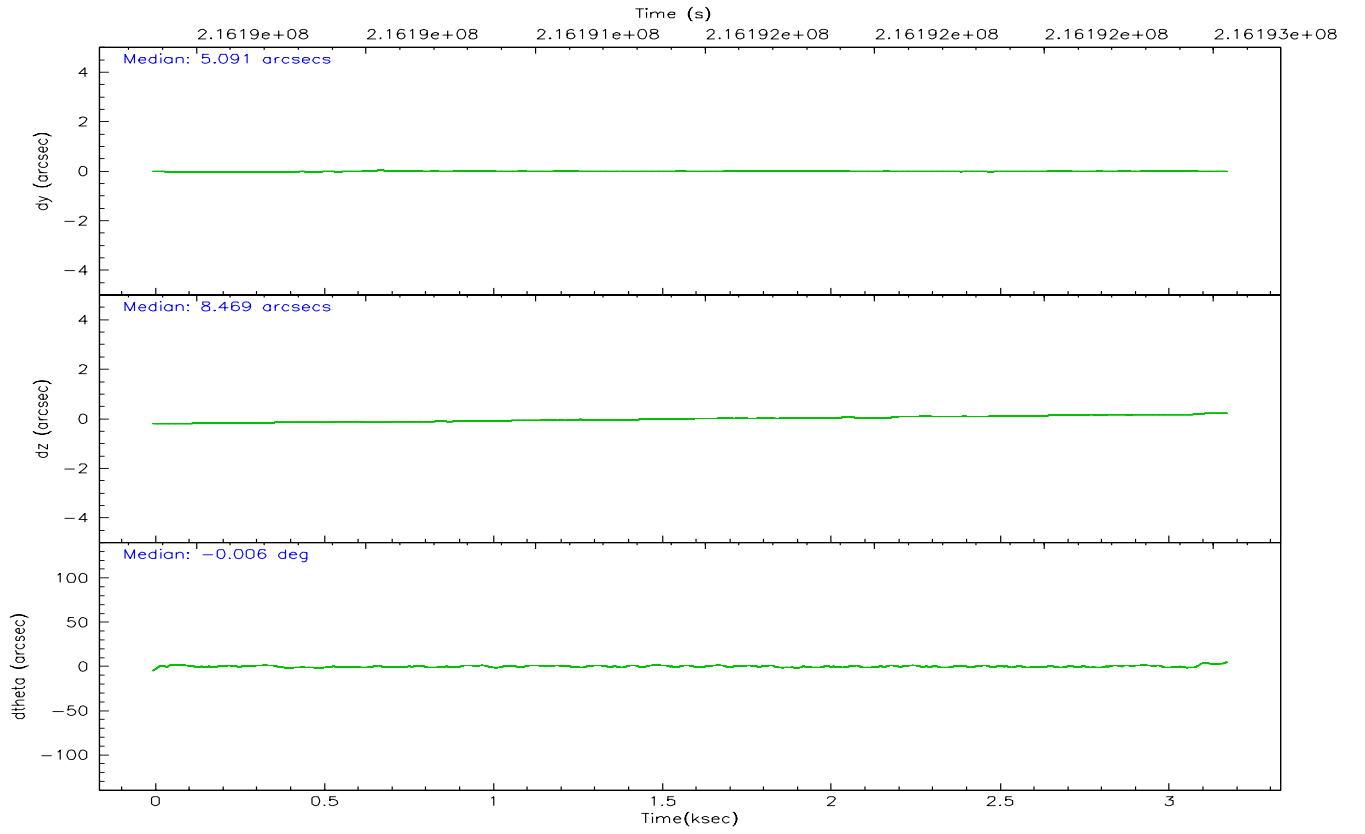
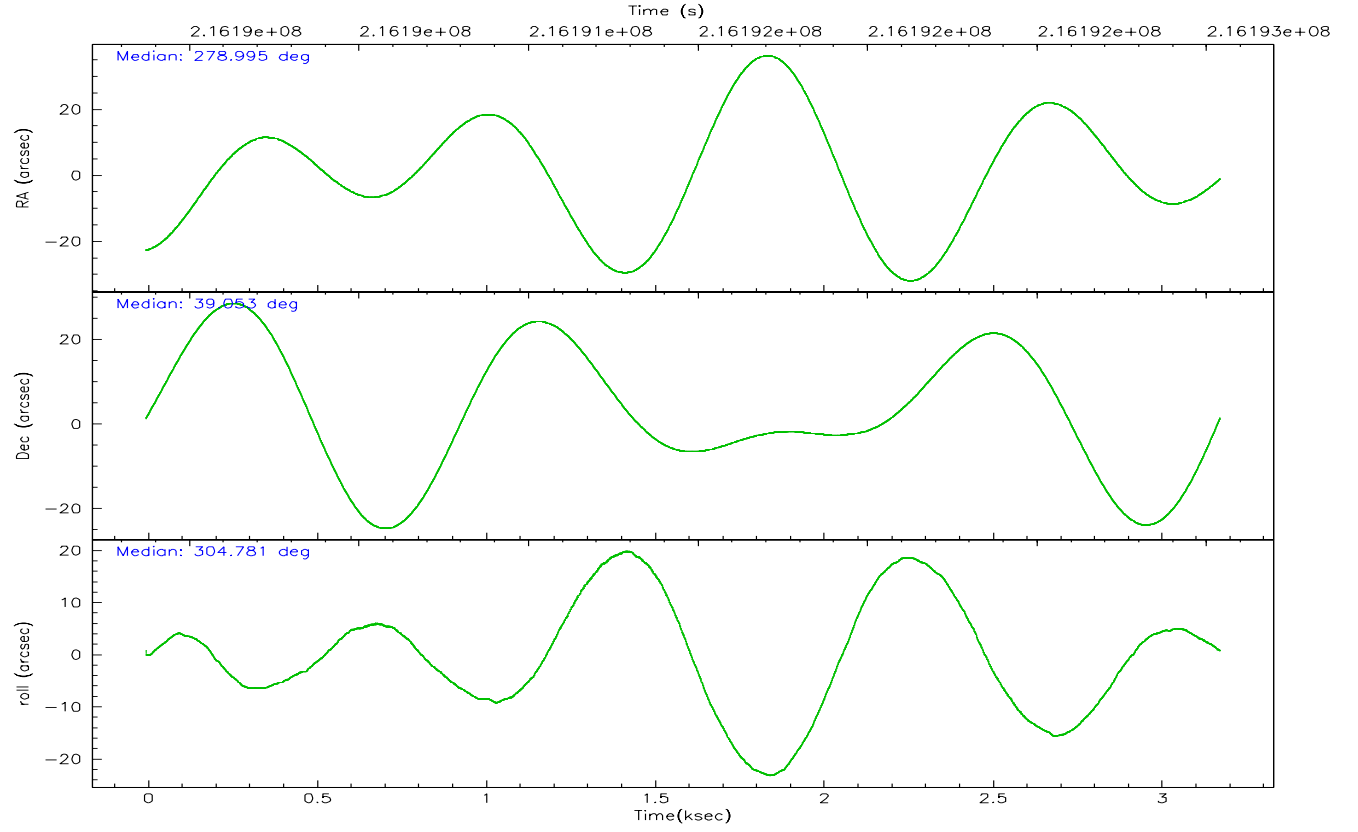
2.2 Compared Parameters

Parameter	Planned	Actual
Instrument	HRC	HRC
Detector	HRC-S	HRC-S
Grating	NONE	NONE
Data mode	OBSERVING	OBSERVING
Observation mode	POINTING	POINTING
Pointing RA	278.960666	278.9946693075547
Pointing Dec	39.064970	39.05404400733438
Pointing Roll	304.741933	304.7878215865276
Window start time	215654464.184000	215654464.184000
Window stop time	218246404.184000	218246404.184000
SIM focus pos (mm)	-1.429586	-1.428180813131781
SIM defocus (mm)	0.1037507710433287	0.1051558262725154
SIM translation stage pos (mm)	250.455976	250.466033080201
SIM translation stage offset (mm)	0	-0.01005468664627074
Observation start time	216190044.184000	216189668.37411
Observation start date	2004-11-07T04:46:20	2004-11-07T04:41:08
Observation end time	216193044.184000	216193178.48677
Observation end date	2004-11-07T05:36:20	2004-11-07T05:39:38

Parameter	Planned	Actual
Obspar format version number	6	6
Obspar file type	PREDICTED	ACTUAL
Obspar update status	NONE	UPDATED

2.3 Aspect



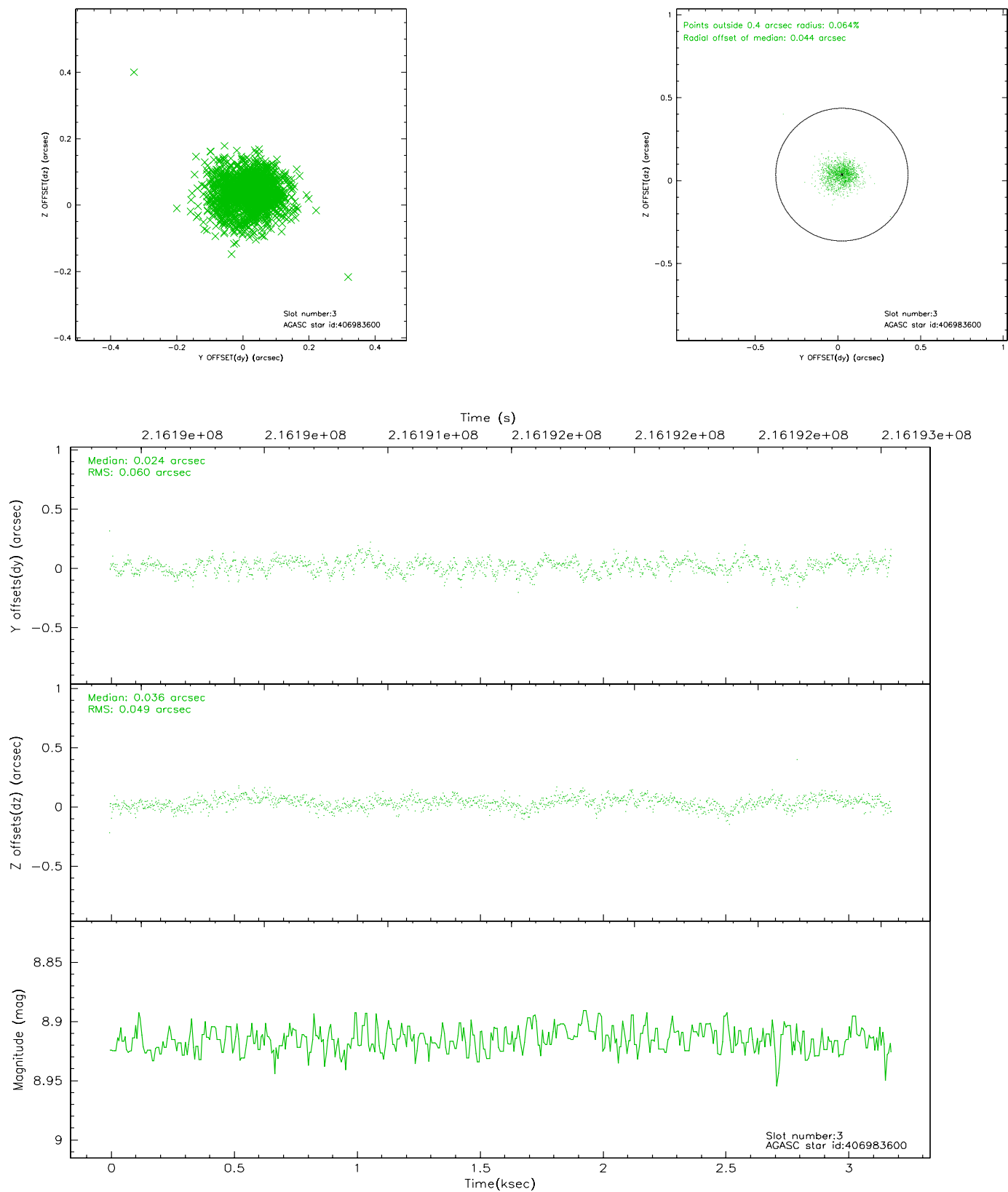


Slot Statistics

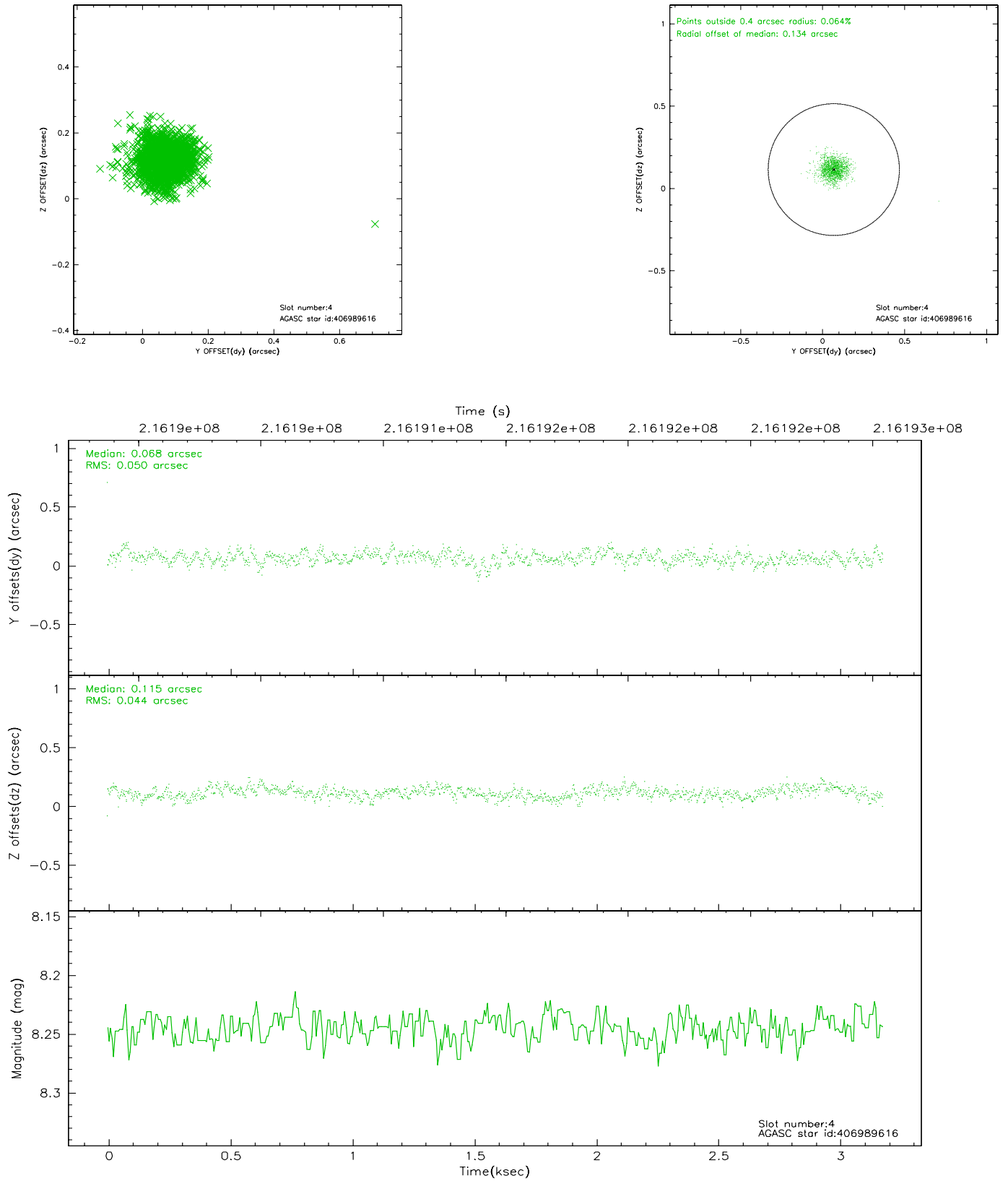
slot	status	id	mag	n_pts	med_dy	med_dz	dr1	dr2	ra	dec	mean_y	mean_z
0	FID	HRC-S-1	7.00	776	0.119	-0.114	0.005	0.010	0.000000	0.000000	-1159.17	-457.11
1	FID	HRC-S-2	6.99	776	0.121	-0.150	0.008	0.015	0.000000	0.000000	1239.02	-450.26
2	FID	HRC-S-4	6.95	776	0.162	-0.039	0.007	0.014	0.000000	0.000000	1240.68	574.58
3	GUIDE	406983600	8.92	1552	0.024	0.036	0.081	0.130	279.940957	39.020708	1681.87	2171.34
4	GUIDE	406989616	8.25	1552	0.068	0.115	0.067	0.113	279.202881	38.520843	1999.14	-553.10
5	GUIDE	406990192	9.00	1548	-0.071	-0.076	0.093	0.152	278.510952	38.533654	849.22	-2128.91
6	GUIDE	407510432	8.13	1552	-0.117	-0.051	0.068	0.108	278.762778	39.530640	-1690.59	502.90
7	GUIDE	407521232	8.66	1551	0.104	-0.026	0.088	0.138	279.628883	39.431715	-32.75	2283.73

2.4 Star Slots

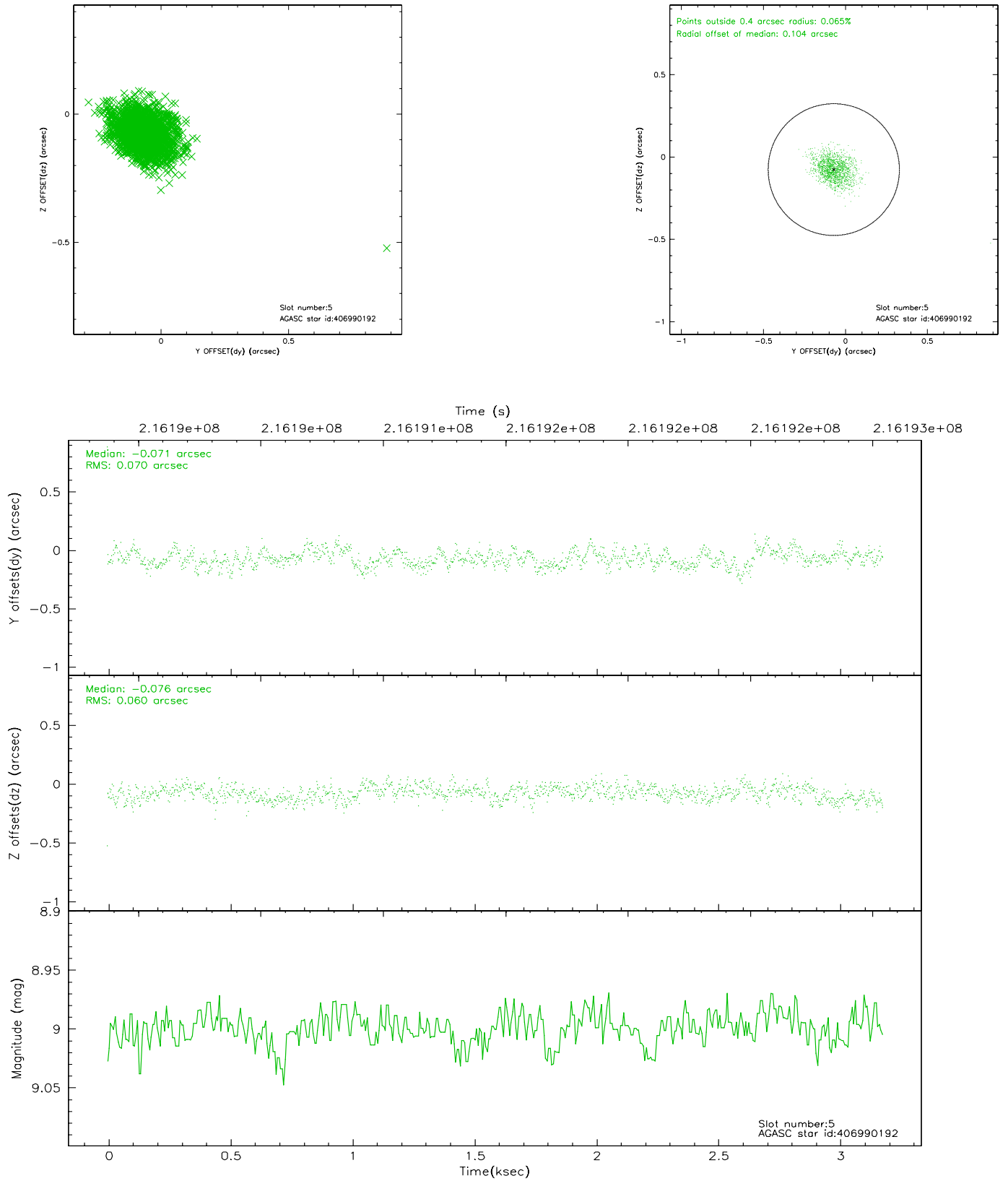
2.4.1 Slot 3



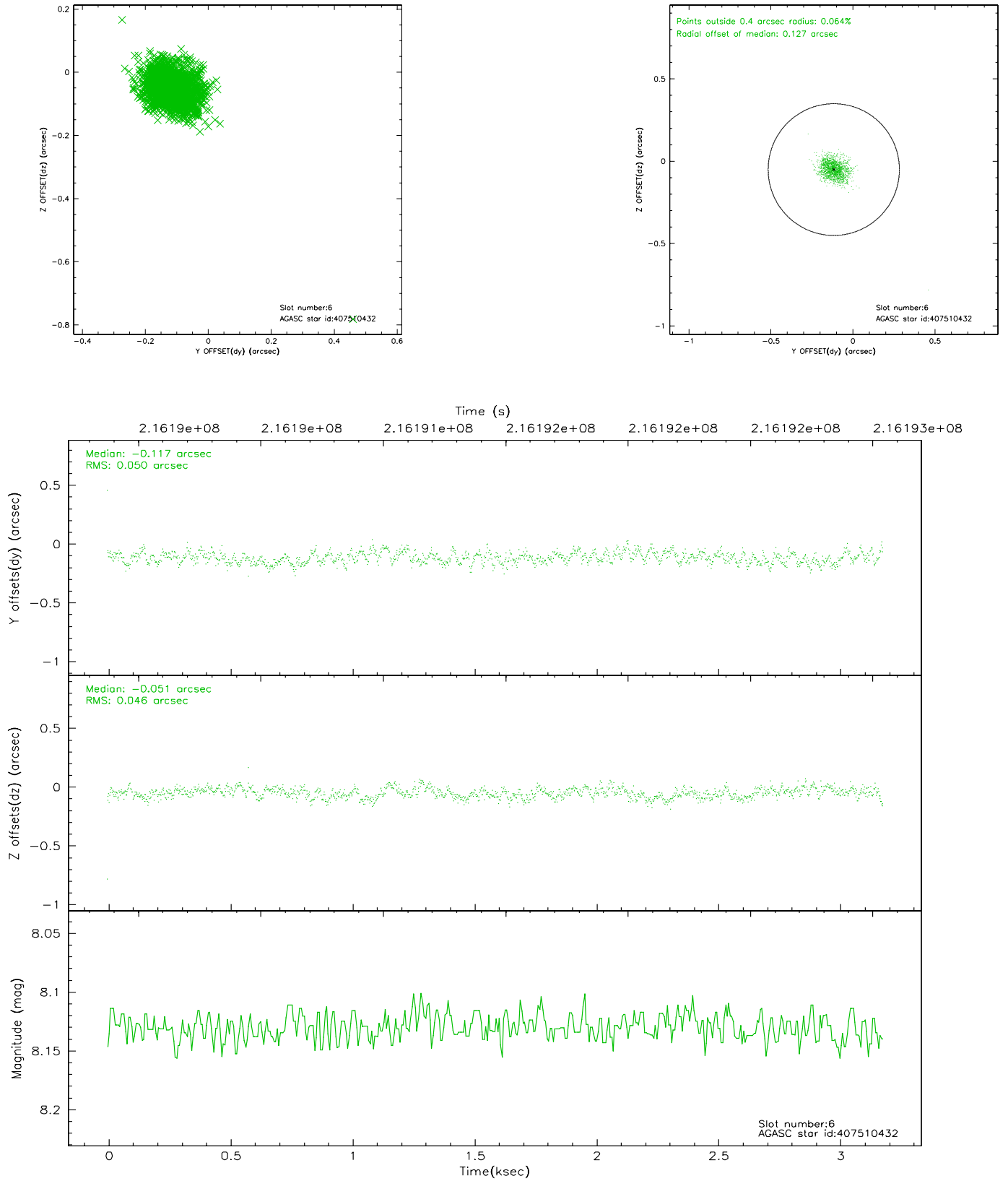
2.4.2 Slot 4



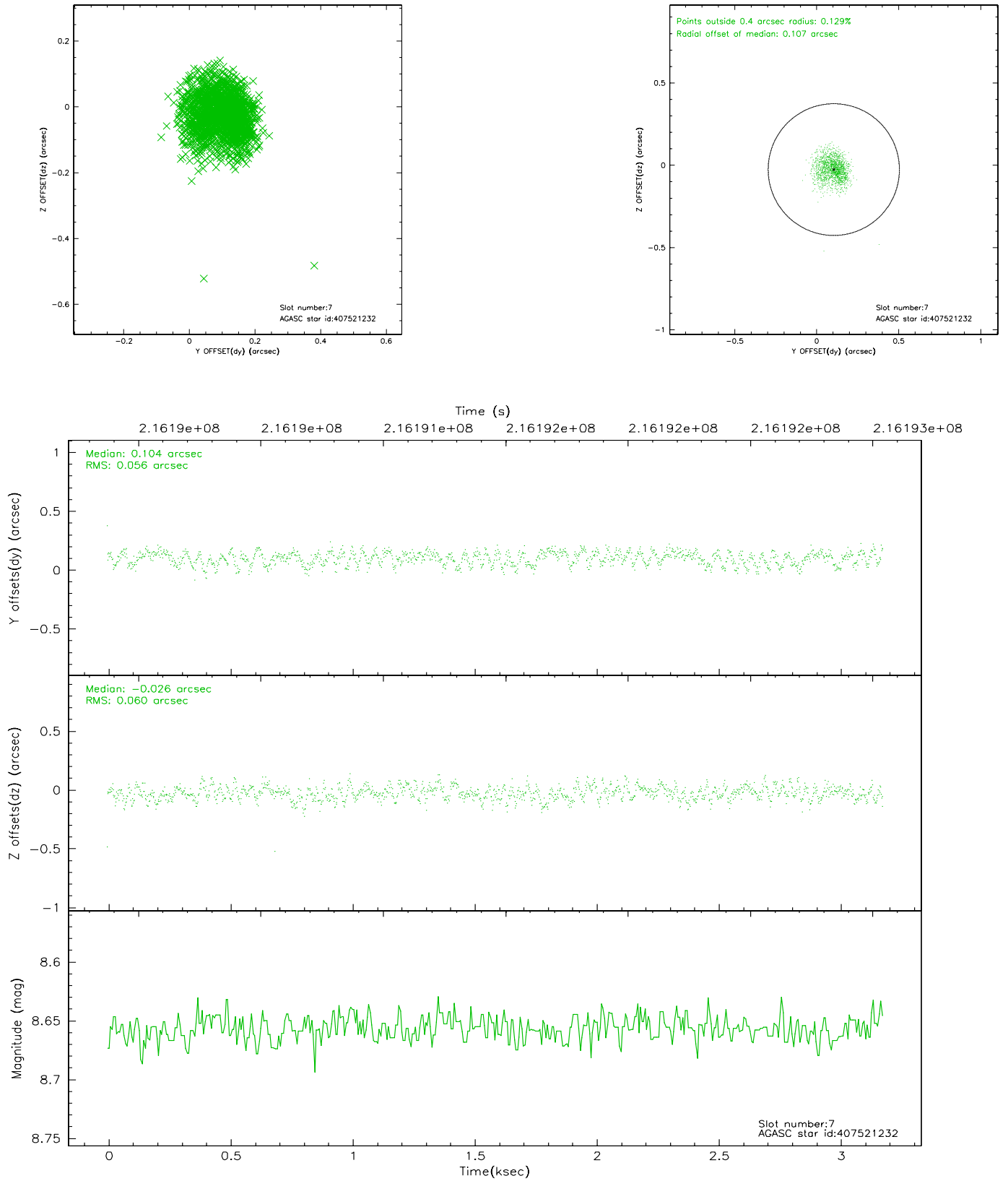
2.4.3 Slot 5



2.4.4 Slot 6

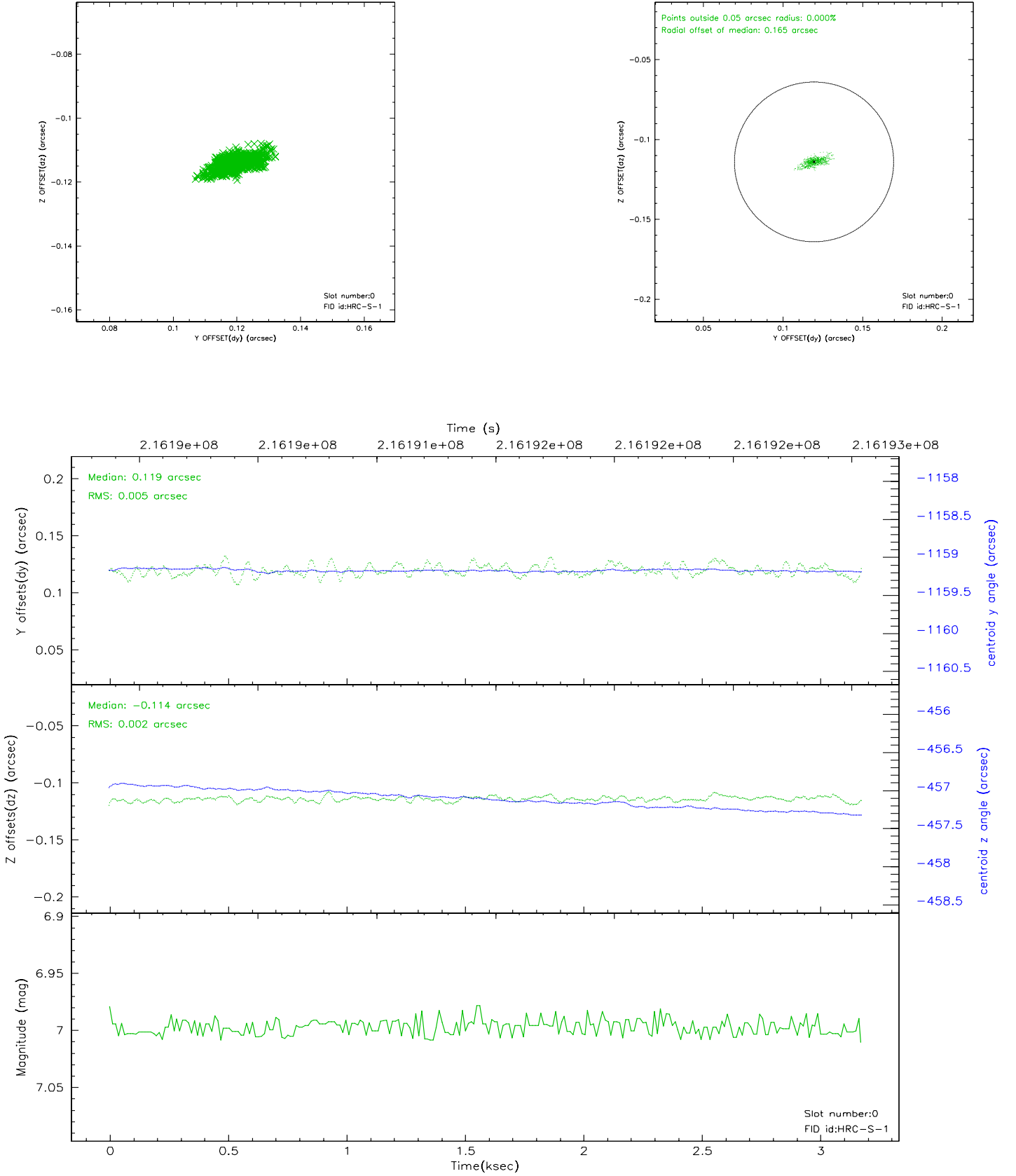


2.4.5 Slot 7

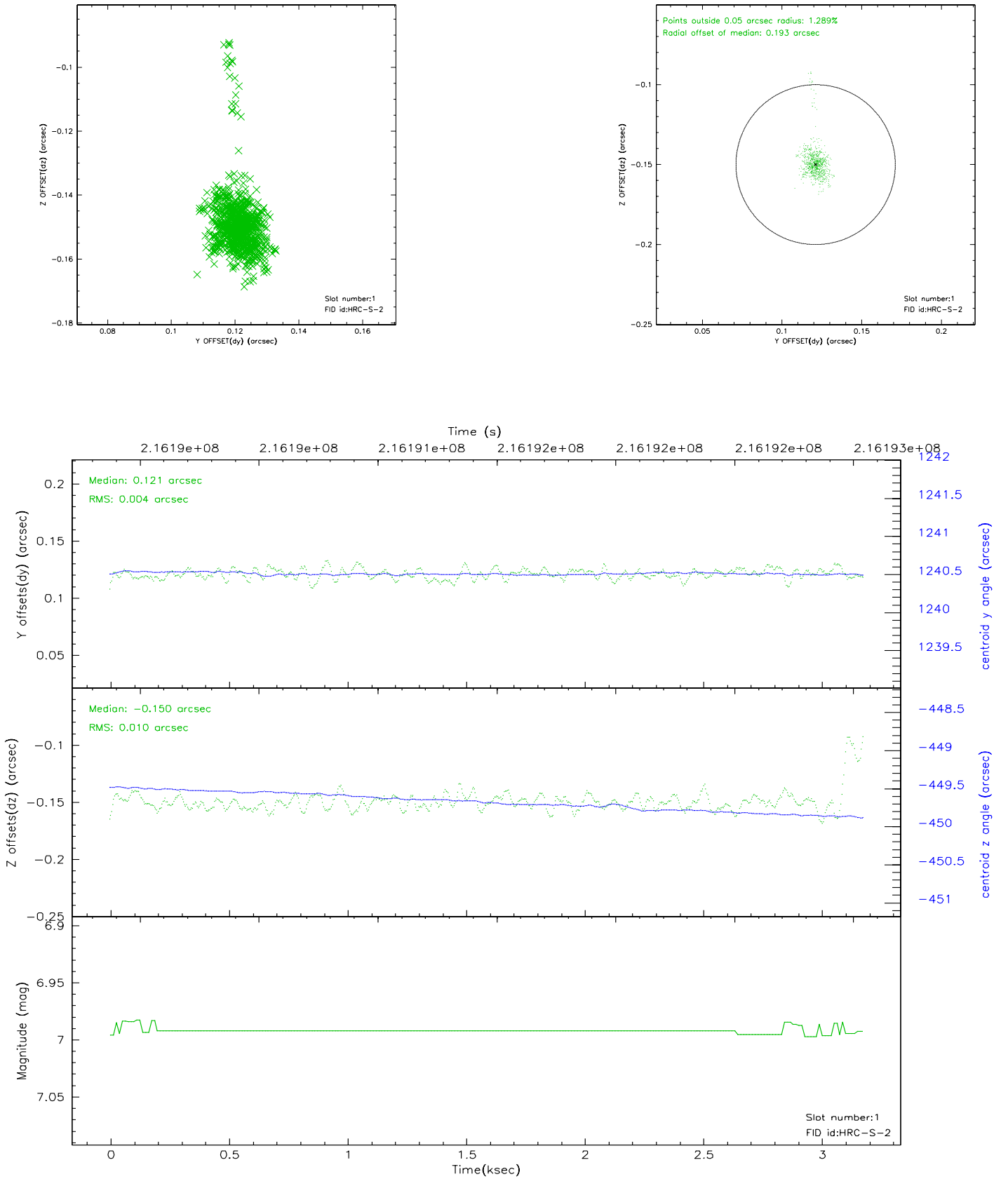


2.5 FID Slots

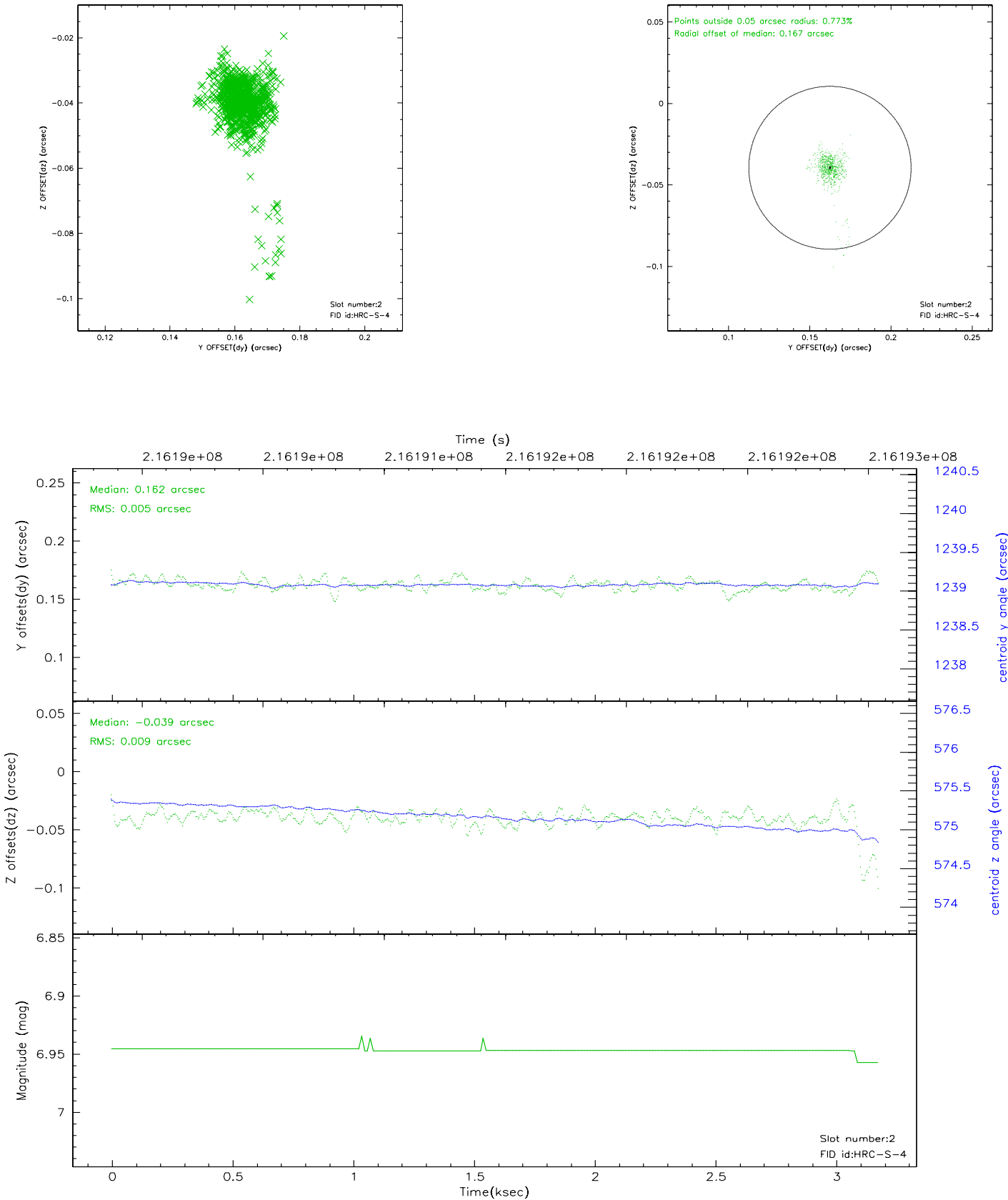
2.5.1 Slot 0



2.5.2 Slot 1



2.5.3 Slot 2



3 Point Sources

16.66 arcmin



A Summary

A.1 Status

V&V Scientist	Jen Lauer
V&V Date (YYYY-MM-DD)	2006.04.12
V&V Edition	1
V&V Disposition and Status	OK
V&V Charge Time	3.178

A.2 Comments

Window constraint met.

The target is off-axis, causing internal reflections on the detector.

The keywords DTCOR, EXPOSURE, and LIVETIME in the Level 2 event file and the

keyword DTCOR in the Level 1 event file have been incorrectly determined due to a software bug. The correct value of DTCOR can be found in the file DTFSTATS file that can be obtained by downloading the Secondary Data Products. In most cases, the difference between the correct DTCOR value and the incorrect DTCOR value in the Level 2 event file is very small and does not affect the data analysis. However, there are cases of significant differences and the user is advised to use the DTCOR in the DTFSTATS file for analysis. Corrected data products will be made available in the archive as soon as feasible.