

V&V Reference Report

L2 ASCDS Version : 7.6.10

Observation 528 - L2 Version 001
Chandra X-Ray Center

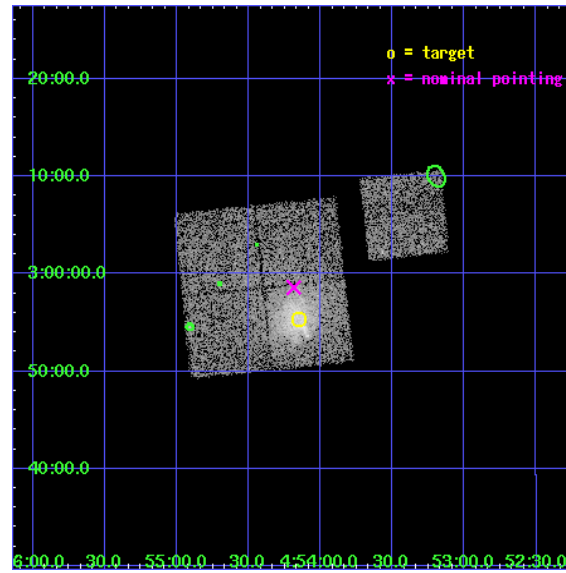
L2 Processing Date : Jun 9 2007

Contents

1	Front	2
2	OBI	3
2.1	OBI	3
2.1.1	Images	3
2.1.2	Bias	3
2.1.3	Parameters	4
2.1.4	Events	4
2.2	Compared Parameters	5
2.3	Aspect	6
2.4	Star Slots	9
2.4.1	Slot 3	9
2.4.2	Slot 4	10
2.4.3	Slot 5	11
2.4.4	Slot 6	12
2.4.5	Slot 7	13
2.5	FID Slots	14
2.5.1	Slot 0	14
2.5.2	Slot 1	15
2.5.3	Slot 2	16
3	Point Sources	17
A	Summary	18
A.1	Status	18
A.2	Comments	18

1 Front

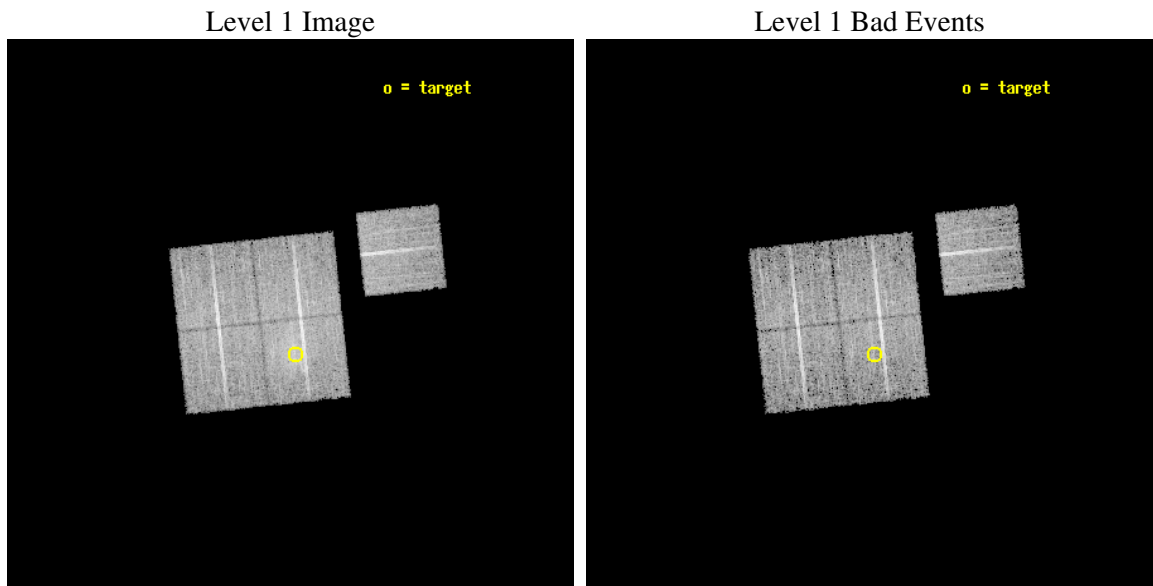
seq_num	800036
obs_id	528
title	DETERMINATION OF H0/Q0
observer	DR. LEON VANSPEYBROECK
object	A520
dtcycle	0
cycle	P
ra_targ	73.538579
dec_targ	2.922708
ra_nom	73.546437164551
dec_nom	2.9766661993302
roll_nom	83.907504499288
revision	2
ontime	9590.4000089318
livetime	9468.9605893731
ontime0	9587.1590486914
ontime1	9590.4000089318
ontime2	9590.4000089318
ontime3	9590.4000089318
ontime6	9590.4000089318
l2events	38062



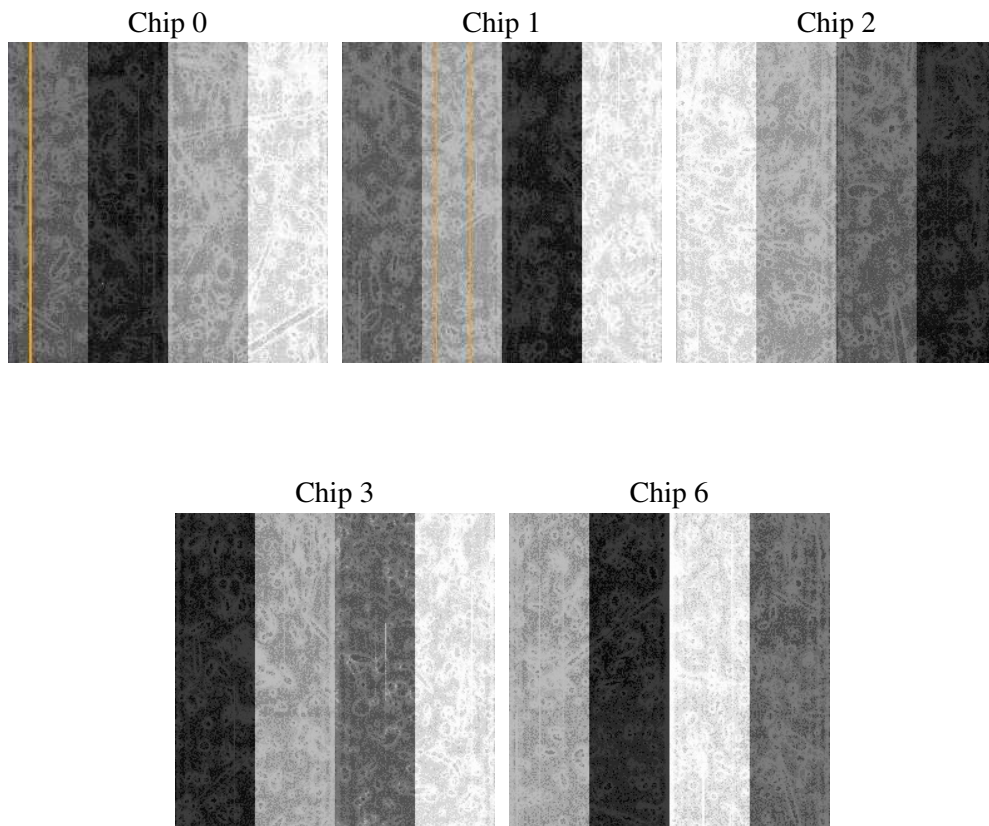
2 OBI

2.1 OBI

2.1.1 Images



2.1.2 Bias



2.1.3 Parameters

obi_num	0
ascdsver	7.6.10
caldsver	3.4.0
date	2007-06-09T21:51:33
revision	2

sched_exp_time	9500.000000
ontime	9590.4000089318
ontime0	9587.1590486914
ontime1	9590.4000089318
ontime2	9590.4000089318
ontime3	9590.4000089318
ontime6	9590.4000089318
l1events	298572

2.1.4 Events

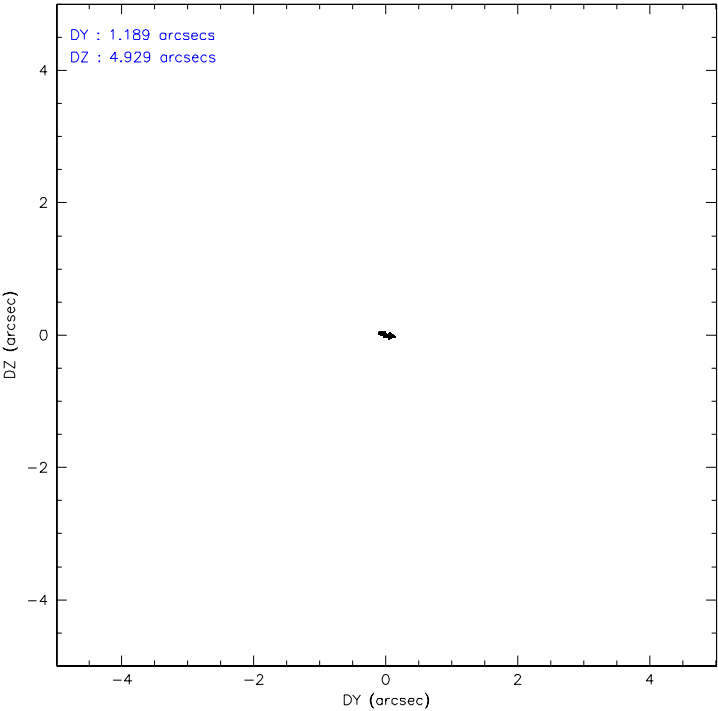
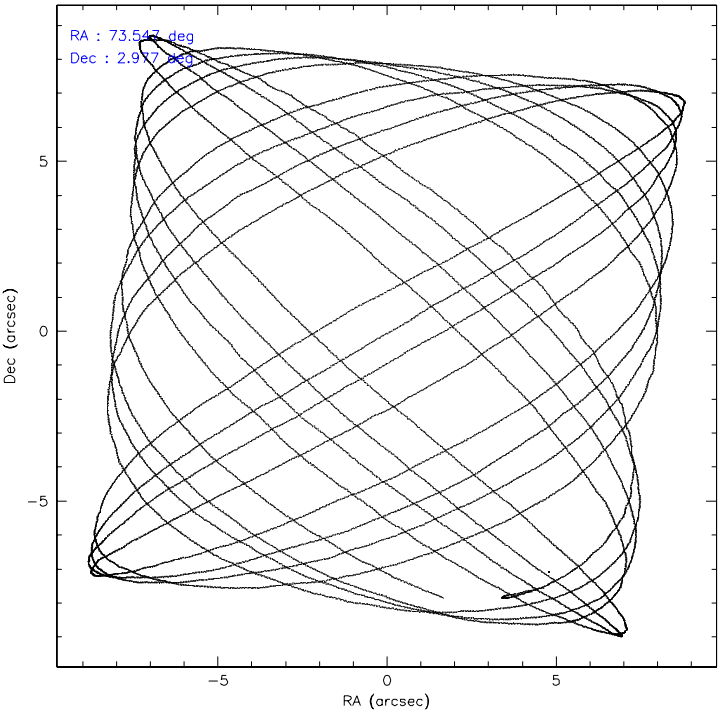
	ccd 0	ccd 1	ccd 2	ccd 3	ccd 6
level 1 events	57238	55322	60877	67455	57680
rejected events	50150	48012	53890	51869	51341
rejected %	87%	86%	88%	76%	89%

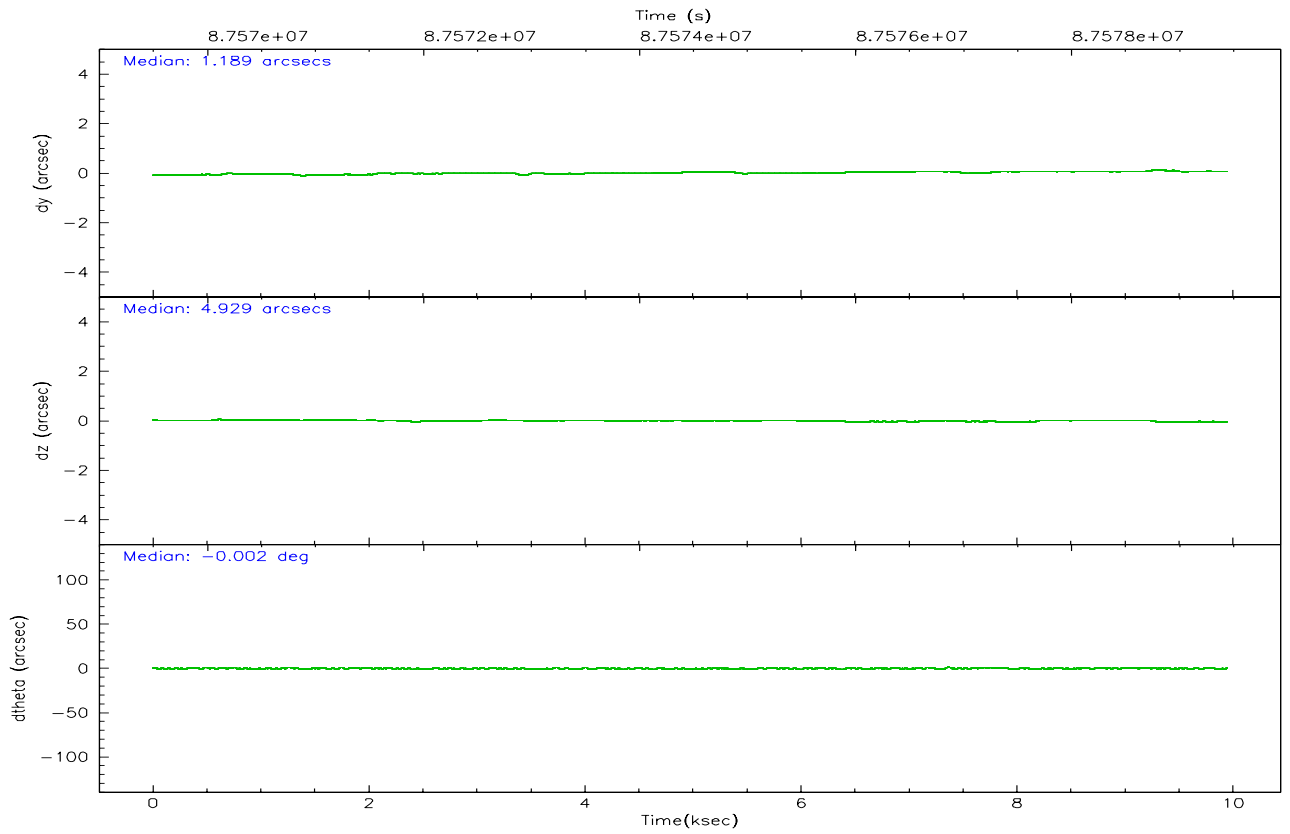
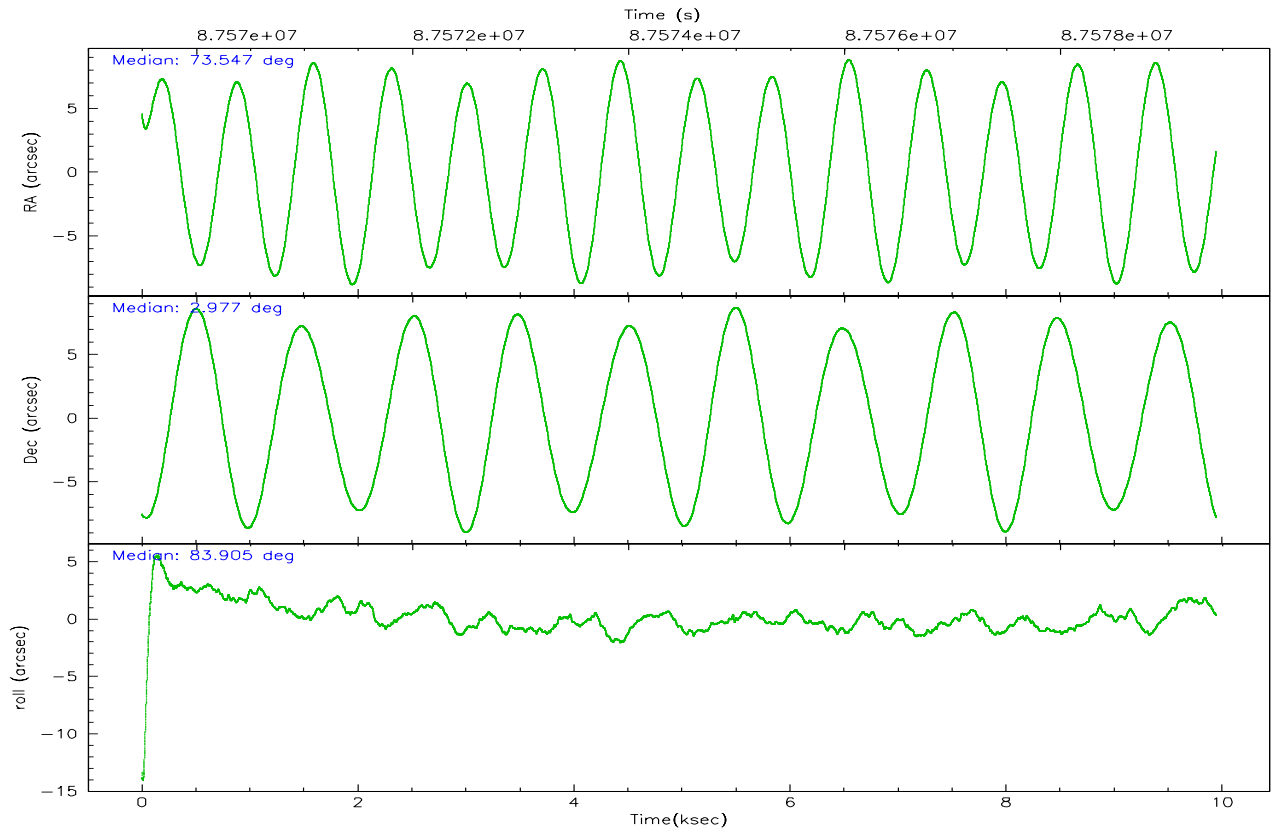
	ccd 0	ccd 1	ccd 2	ccd 3	ccd 6
grade 0 events	3067	3199	3122	10210	2503
	5%	5%	5%	15%	4%
grade 1 events	29	28	31	60	23
	0%	0%	0%	0%	0%
grade 2 events	1504	1402	1408	2252	1280
	2%	2%	2%	3%	2%
grade 3 events	705	709	671	921	654
	1%	1%	1%	1%	1%
grade 4 events	664	712	637	879	663
	1%	1%	1%	1%	1%
grade 5 events	1984	2249	1996	2278	2287
	3%	4%	3%	3%	3%
grade 6 events	1149	1292	1152	1329	1243
	2%	2%	1%	1%	2%
grade 7 events	48136	45731	51860	49526	49027
	84%	82%	85%	73%	84%

2.2 Compared Parameters

Parameter	Planned	Actual	Parameter	Planned	Actual
Instrument	ACIS	ACIS	Obspar format version number	6	6
Detector	ACIS-01236	ACIS-01236	Obspar file type	PREDICTED	ACTUAL
Grating	NONE	NONE	Obspar update status	NONE	UPDATED
Data mode	VFAINT	VFAINT	Number of optional ACIS chips dropped	0	0
Observation mode	POINTING	POINTING	On-chip summing requested	N	N
Pointing RA	73.557541	73.54643716455134	Subarray requested	NONE	NONE
Pointing Dec	2.951477	2.976666199330172	Alternating exposures requested	N	N
Pointing Roll	83.698258	83.90750449928781	Primary exposure time	3.200000	3.2
SIM focus pos (mm)	-0.782348	-0.7809083437167272			
SIM defocus (mm)	0	0.001439871863259334			
SIM translation stage pos (mm)	-225.840463	-225.8458576473255			
SIM translation stage offset (mm)	-7.752	-7.746595355604228			
Observation start time	87569941.184000	87568855.68014701			
Observation start date	2000-10-10T12:57:57	2000-10-10T12:40:55			
Observation end time	87579441.184000	87580112.743072			
Observation end date	2000-10-10T15:36:17	2000-10-10T15:48:32			
Read mode	TIMED	TIMED			

2.3 Aspect



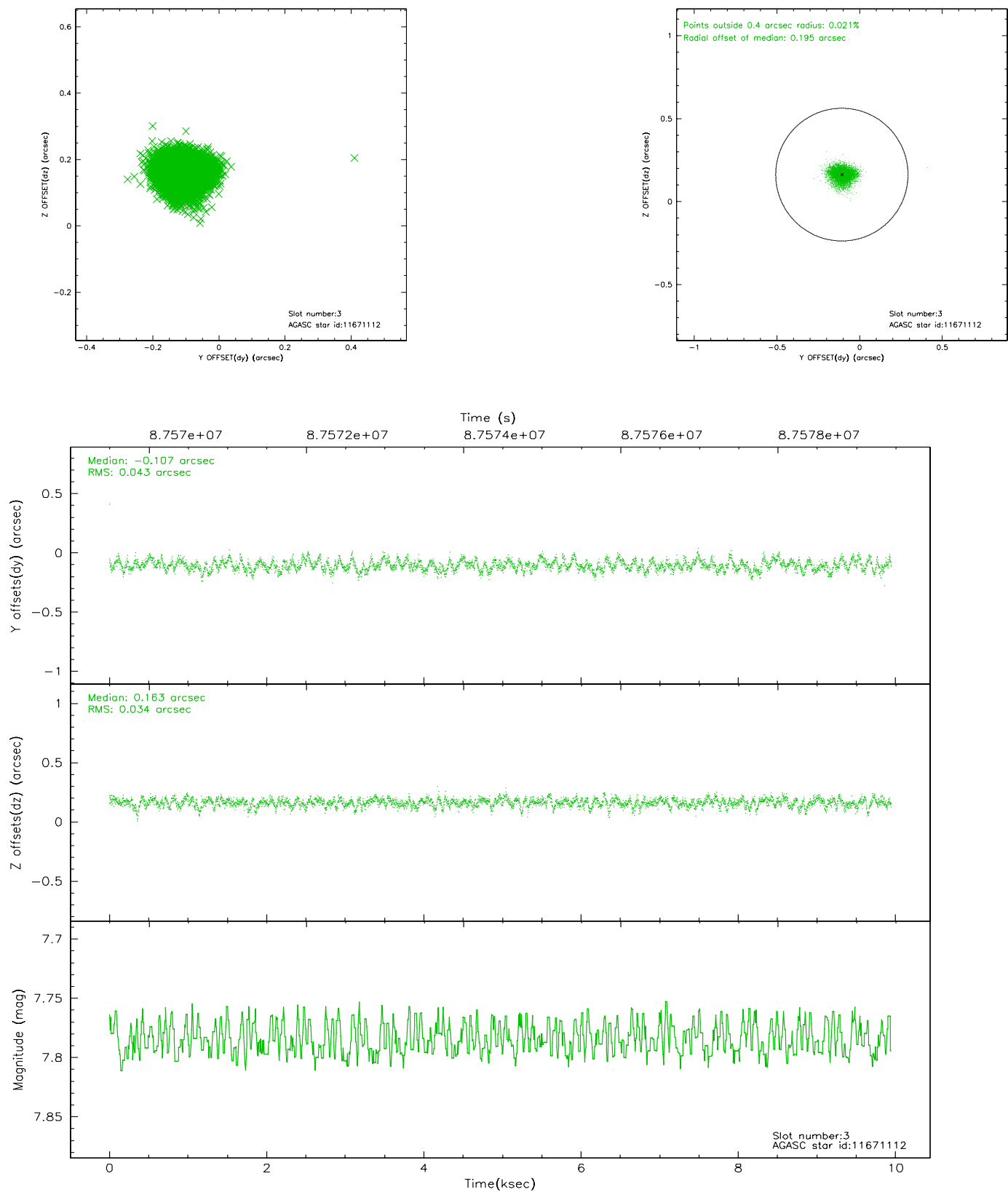


Slot Statistics

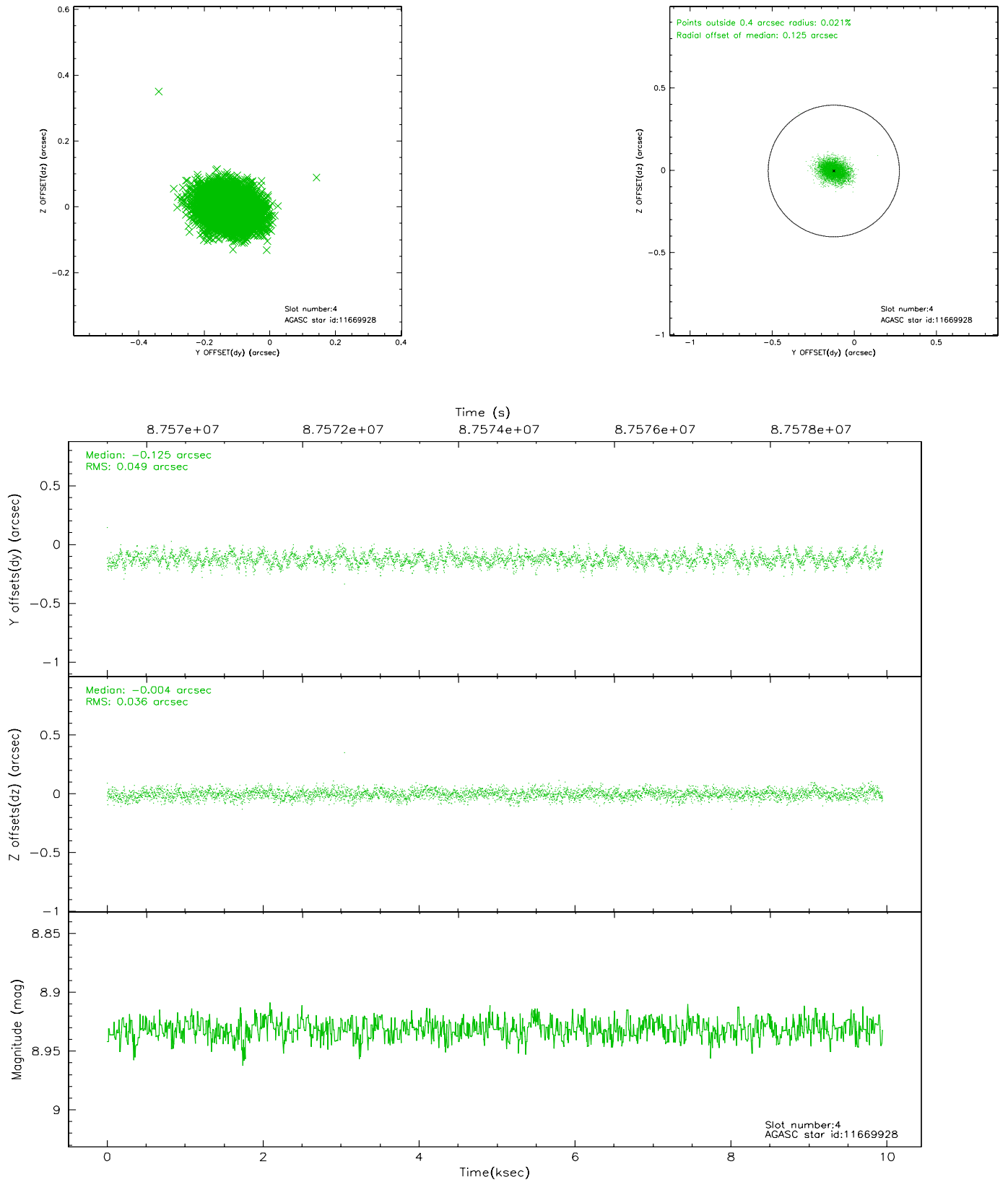
slot	status	id	mag	n_pts	med_dy	med_dz	dr1	dr2	ra	dec	mean_y	mean_z
0	FID	ACIS-I-1	7.23	2425	0.038	0.001	0.006	0.011	0.000000	0.000000	938.54	-987.29
1	FID	ACIS-I-5	7.23	2425	-0.135	0.067	0.006	0.012	0.000000	0.000000	-1809.44	909.92
2	FID	ACIS-I-6	7.27	2425	0.005	0.002	0.007	0.012	0.000000	0.000000	403.47	1554.98
3	GUIDE	11671112	7.78	4851	-0.107	0.163	0.058	0.093	74.058917	3.175804	1001.35	-1701.65
4	GUIDE	11669928	8.93	4850	-0.125	-0.004	0.064	0.104	73.336883	3.436182	1647.95	980.20
5	GUIDE	11667264	9.09	4848	0.124	-0.058	0.068	0.114	73.428722	2.553150	-1475.25	303.98
6	GUIDE	11668544	9.25	4848	0.147	-0.014	0.072	0.116	73.461099	2.439378	-1870.19	143.20
7	GUIDE	11669880	9.60	4847	-0.044	-0.084	0.079	0.128	73.557952	3.464975	1837.60	202.23

2.4 Star Slots

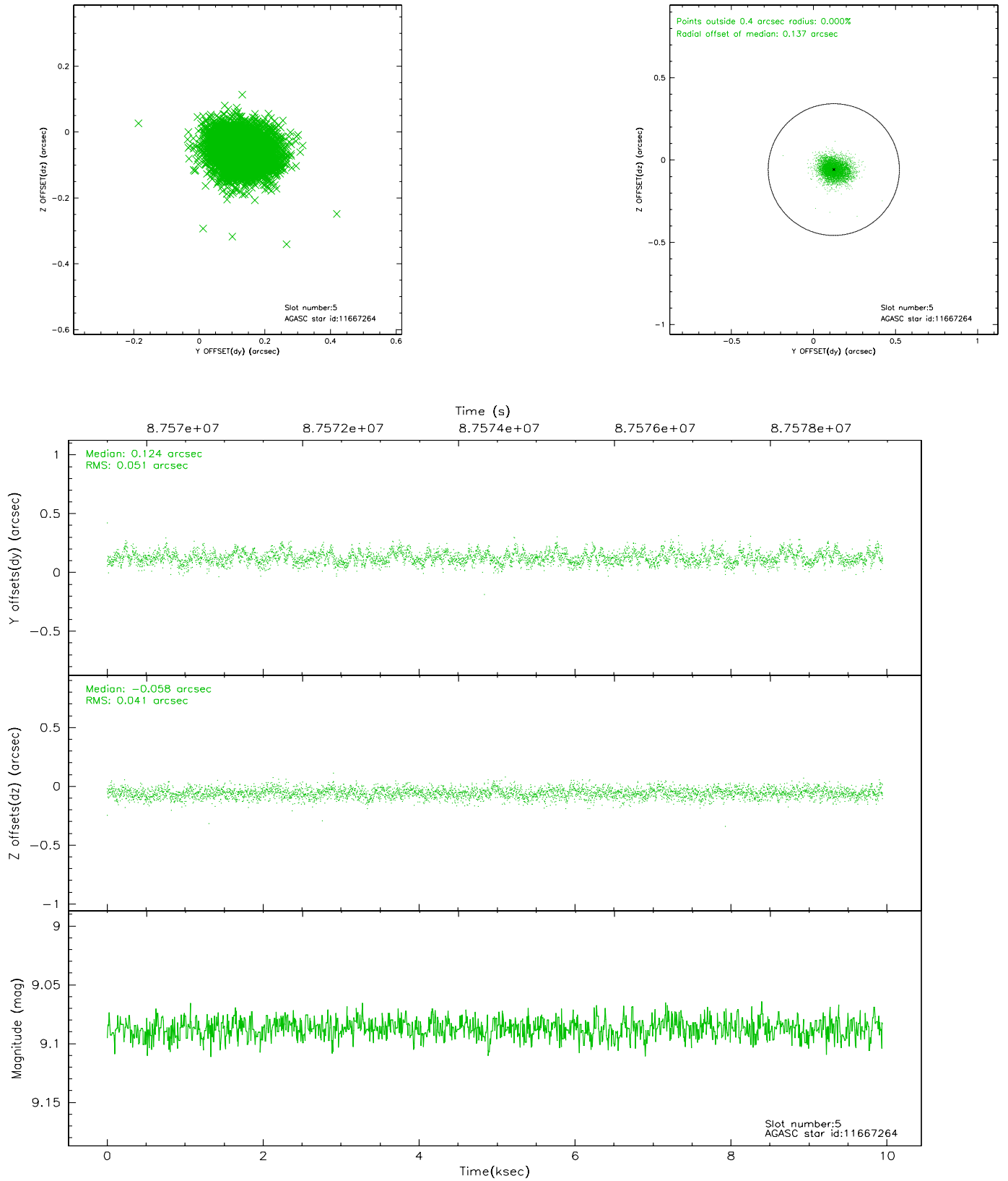
2.4.1 Slot 3



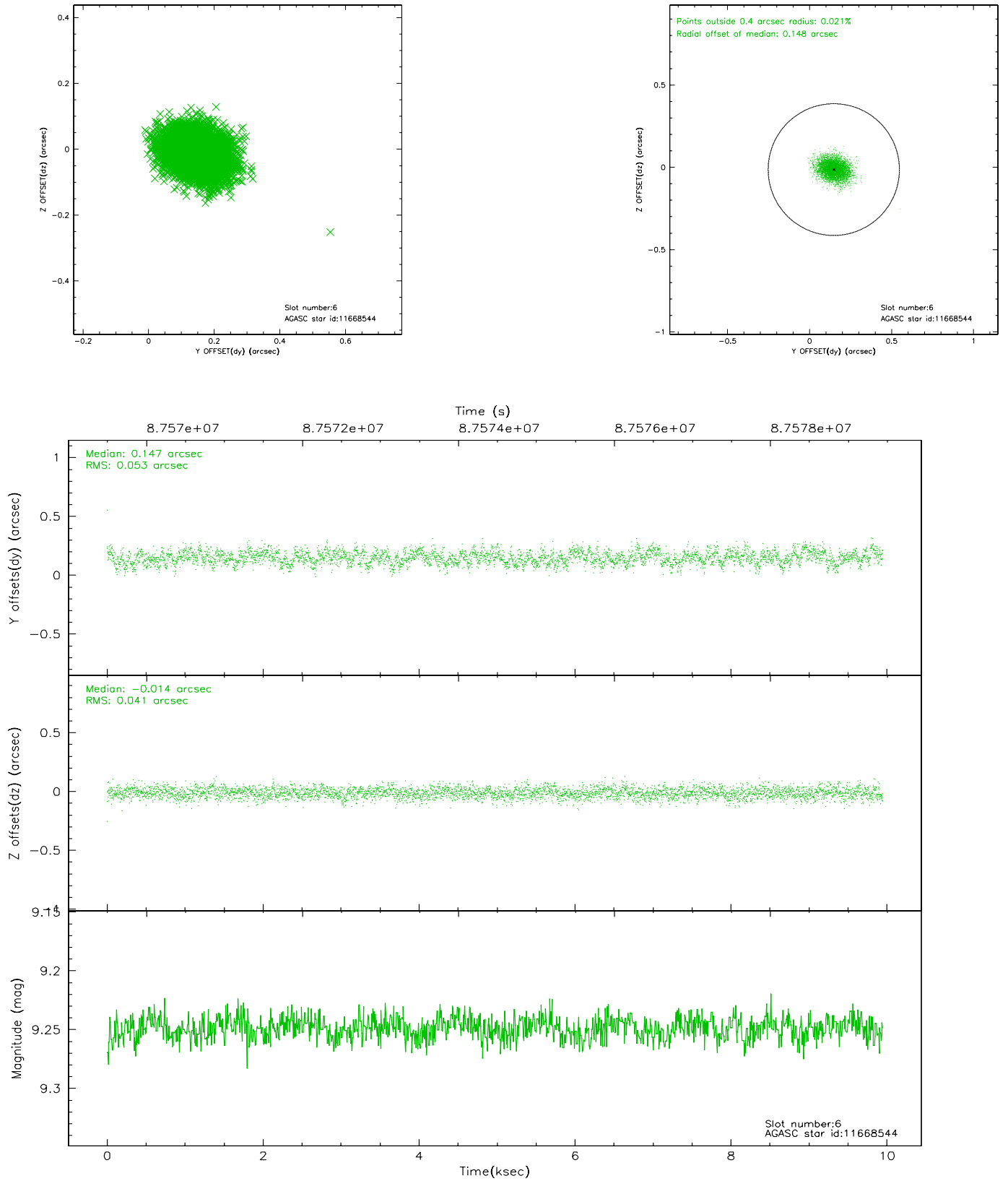
2.4.2 Slot 4



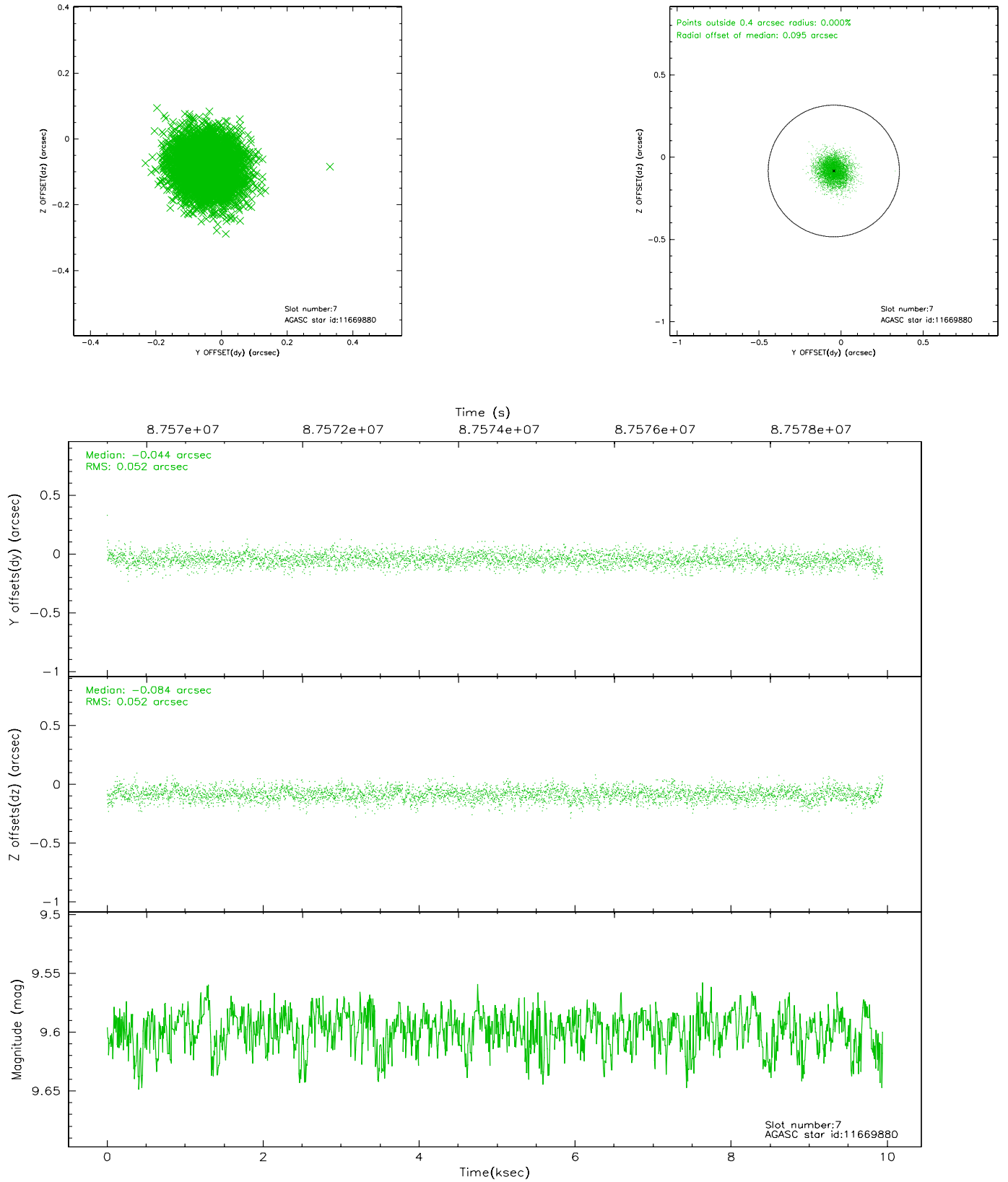
2.4.3 Slot 5



2.4.4 Slot 6

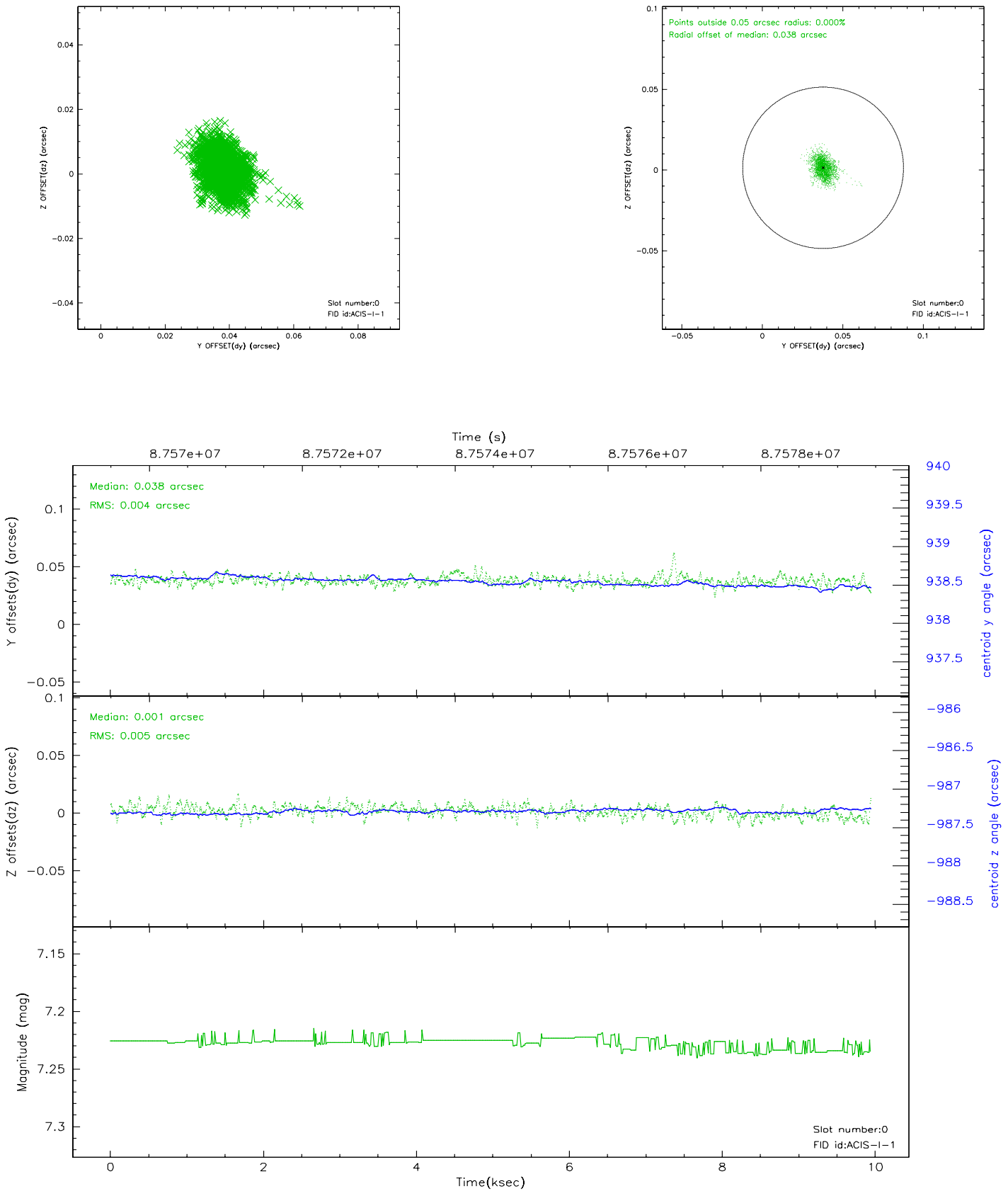


2.4.5 Slot 7

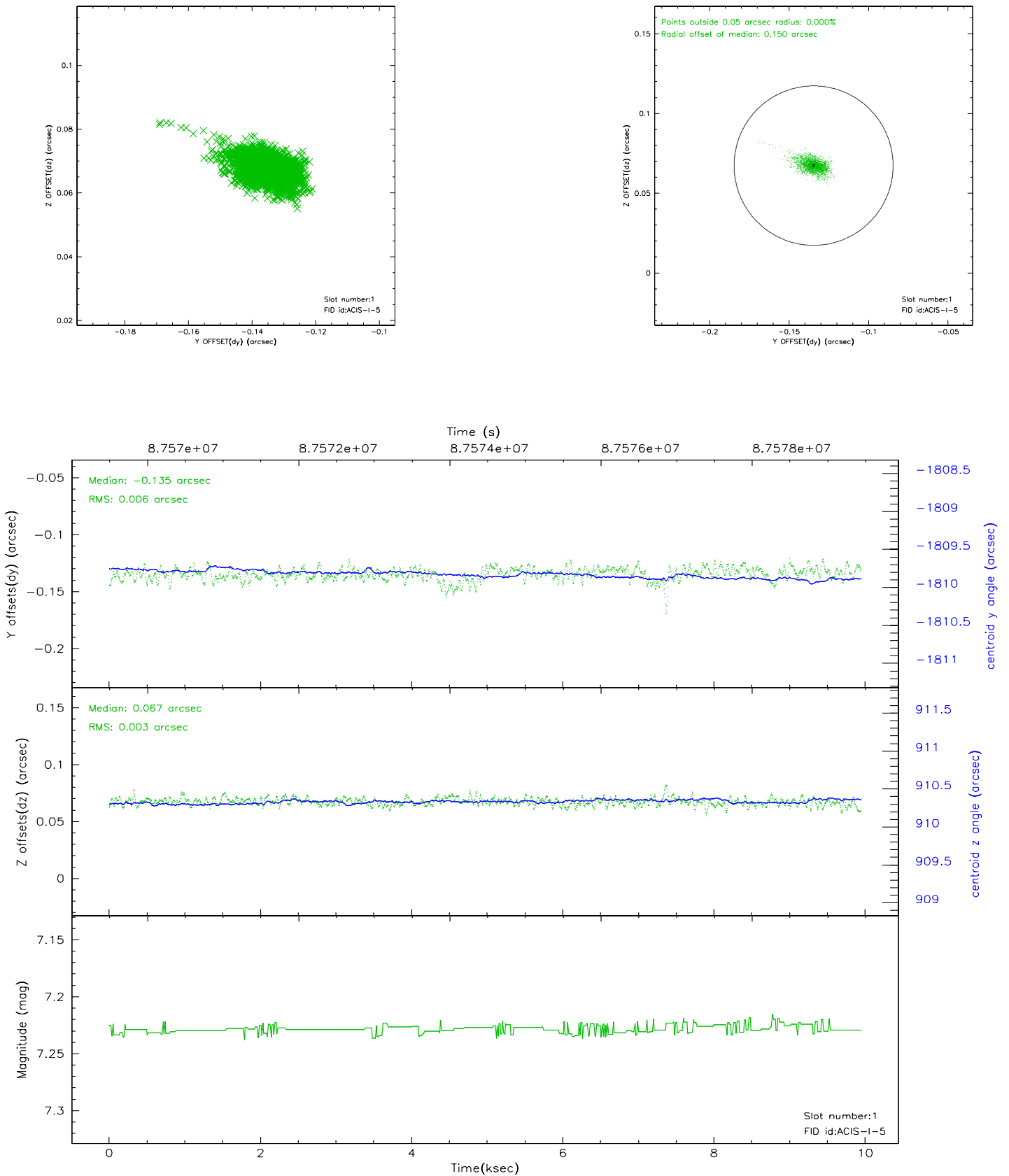


2.5 FID Slots

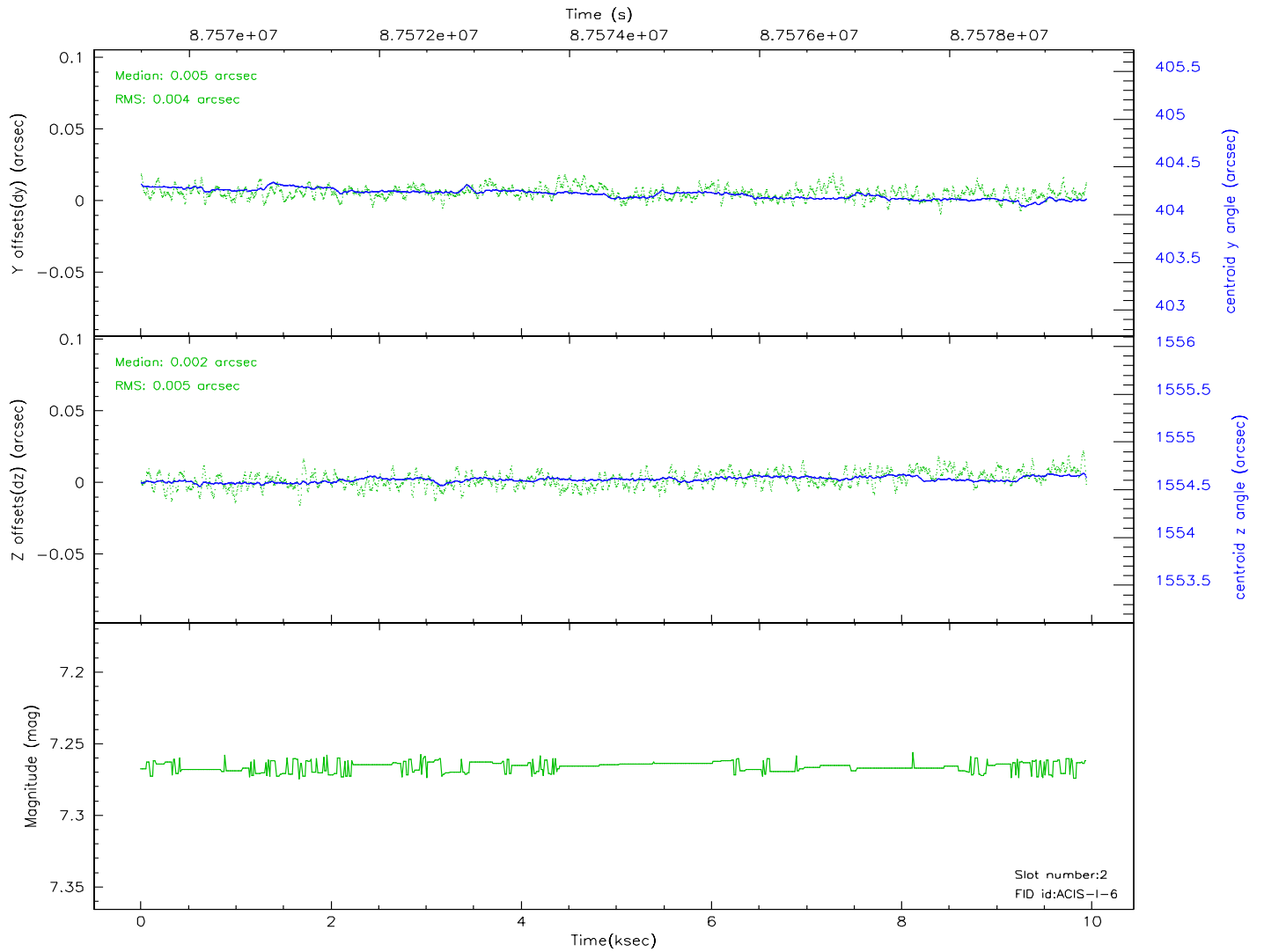
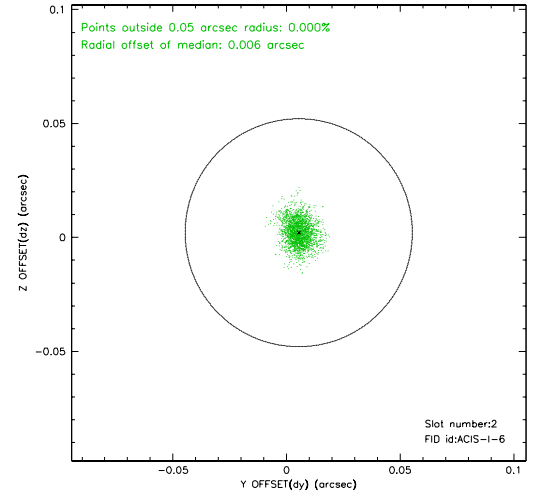
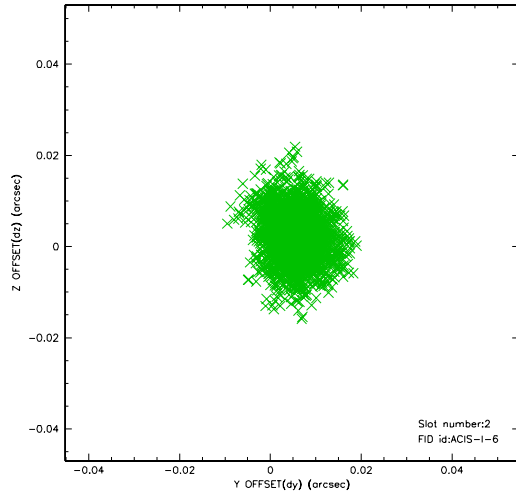
2.5.1 Slot 0



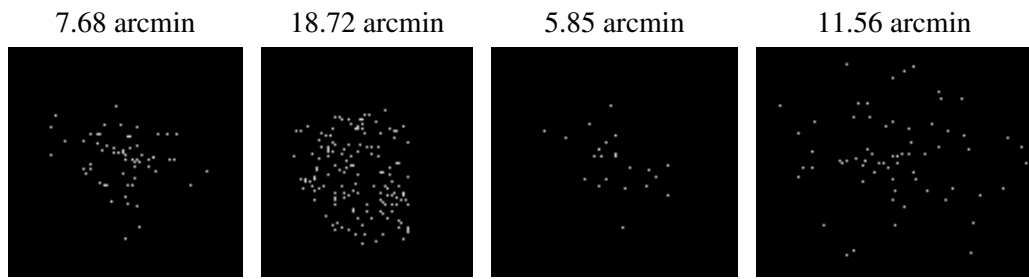
2.5.2 Slot 1



2.5.3 Slot 2



3 Point Sources



A Summary

A.1 Status

V&V Scientist	Jen Lauer
V&V Date (YYYY-MM-DD)	2007.06.11
V&V Edition	1
V&V Disposition and Status	OK
V&V Charge Time	9.59

A.2 Comments