

# V&V Reference Report

## L2 ASCDS Version : 10.3.3

Observation 51968 - L2 Version 1  
Chandra X-Ray Center

L2 Processing Date : Apr 4 2015

## Contents

<b>1</b>	<b>Front</b>	<b>2</b>
<b>2</b>	<b>OBI</b>	<b>3</b>
2.1	OBI . . . . .	3
2.1.1	Images . . . . .	3
2.1.2	Bias . . . . .	3
2.1.3	Parameters . . . . .	4
2.1.4	Events . . . . .	4
2.2	Compared Parameters . . . . .	5
2.3	Star Slots . . . . .	6
2.4	FID Slots . . . . .	6
<b>A</b>	<b>Summary</b>	<b>7</b>
A.1	Status . . . . .	7
A.2	Comments . . . . .	7

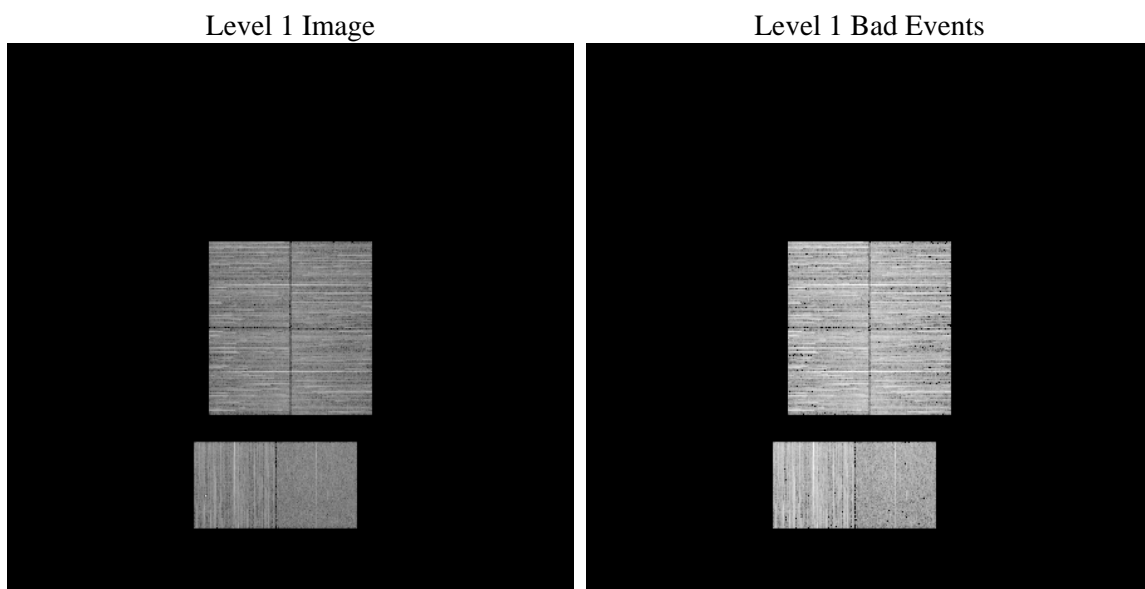
# 1 Front

seq_num	&#160	Sequence number
obs_id	51968	Observation id
title	ACIS-012367 diagnostics	Proposal title
observer	CHANDRA engineering request/realtime commanding	Principal investig
object	&#160	Source name
dtcycle	0	&#160
cycle	P	events from which exps? Prim/Second/Both
ra_targ	0.0	Observer's specified target RA [deg]
dec_targ	0.0	Observer's specified target Dec [deg]
ra_nom	170.93127061215	Nominal RA [deg]
dec_nom	-22.30250991501	Nominal Dec [deg]
roll_nom	305.68066376881	Nominal Roll [deg]
revision	1	Processing version of data
ontime	4882.5187652111	Sum of GTIs [s]
livetime	4820.6933727062	Livetime [s]
ontime0	4879.2366648912	Sum of GTIs [s]
ontime1	4882.4366852045	Sum of GTIs [s]
ontime2	4882.3956451416	Sum of GTIs [s]
ontime3	4882.5598051548	Sum of GTIs [s]
ontime6	4882.3546051979	Sum of GTIs [s]
ontime7	4882.5187652111	Sum of GTIs [s]
l2events	106297	Number of level 2 events

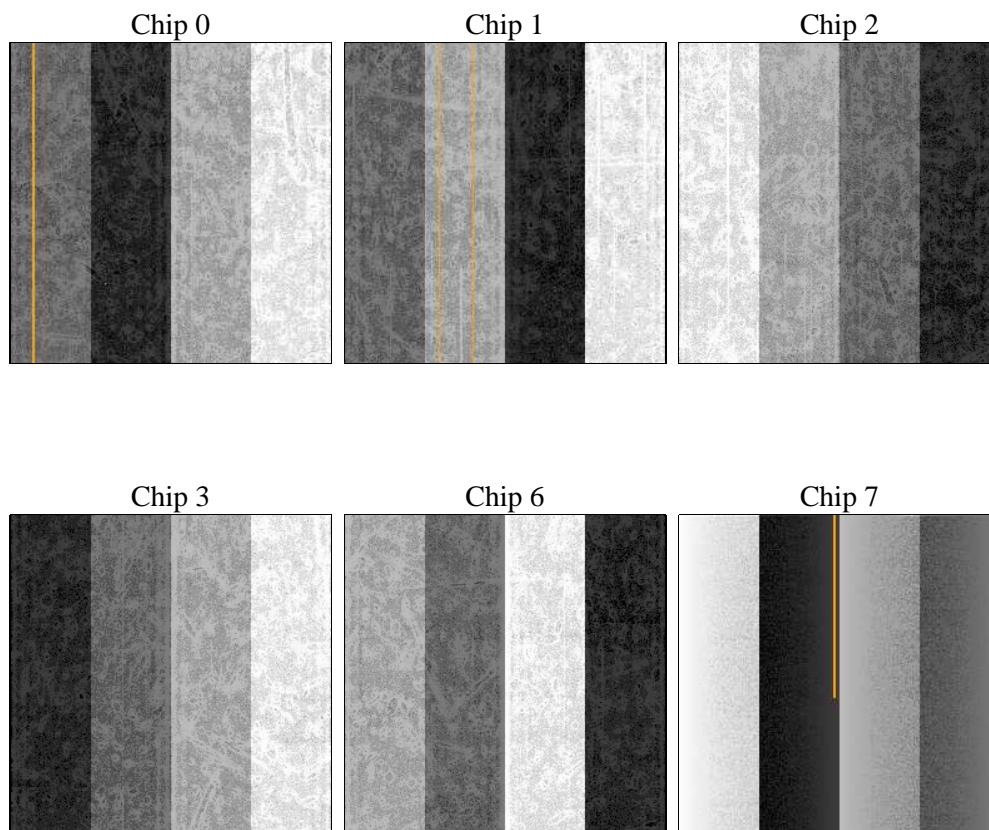
## 2 OBI

### 2.1 OBI

#### 2.1.1 Images



#### 2.1.2 Bias



### 2.1.3 Parameters

obi_num	1	Obi number	sched_exp_time	0.0	[s] Scheduled observation exposure time
ascdsver	10.3.3	Processing system revision	ontime	4882.5187652111	Sum of GTIs [s]
caldbver	4.6.7	&#160	ontime0	4879.2366648912	Sum of GTIs [s]
date	2015-04-04T12:27:32	Date and time of file creation	ontime1	4882.4366852045	Sum of GTIs [s]
revision	1	Processing version of data	ontime2	4882.3956451416	Sum of GTIs [s]
			ontime3	4882.5598051548	Sum of GTIs [s]
			ontime6	4882.3546051979	Sum of GTIs [s]
			ontime7	4882.5187652111	Sum of GTIs [s]
			l1events	501403	Number of level 1 events

### 2.1.4 Events

	ccd 0	ccd 1	ccd 2	ccd 3	ccd 6	ccd 7		ccd 0	ccd 1	ccd 2	ccd 3	ccd 6	ccd 7
level 1 events	86183	83914	90675	82321	90287	68023	grade 0 events	7852	7555	8099	8135	9426	4216
rejected events	69938	67514	74485	65975	71600	37756		9%	9%	8%	9%	10%	6%
rejected %	81%	80%	82%	80%	79%	55%	grade 1 events	32	45	46	61	50	56
								0%	0%	0%	0%	0%	0%
							grade 2 events	3380	3628	3214	3221	3724	7653
								3%	4%	3%	3%	4%	11%
							grade 3 events	1106	1040	1137	1083	1077	2323
								1%	1%	1%	1%	1%	3%
							grade 4 events	1041	1057	1033	1154	1042	2208
								1%	1%	1%	1%	1%	3%
							grade 5 events	1555	1567	1444	1794	1729	4084
								1%	1%	1%	2%	1%	6%
							grade 6 events	2878	3123	2715	2756	3426	13876
								3%	3%	2%	3%	3%	20%
							grade 7 events	68339	65899	72987	64117	69813	33607
								79%	78%	80%	77%	77%	49%

## 2.2 Compared Parameters

Parameter	Planned	Actual	Parameter	Planned	Actual
Instrument	ACIS	ACIS	Obspar format version number	7	7
Detector	ACIS-012367	ACIS-012367	Obspar file type	PREDICTED	ACTUAL
Grating	NONE	NONE	Obspar update status	NONE	UPDATED
Data mode	FAINT	FAINT	Number of optional ACIS chips dropped	0	0
Observation mode	SECONDARY	SECONDARY	On-chip summing requested	N	N
[deg] Pointing RA	0	170.9312706121508	Subarray requested	NONE	NONE
[deg] Pointing Dec	0	-22.30250991501012	Alternating exposures requested	N	N
[deg] Pointing Roll	0.0	305.6806637688135	[s] Primary exposure time	3.2	3.2
[mm] SIM focus pos	-1.429586	-1.428180813131781			
[mm] SIM defocus	0.1037507710433287	0.1051558262725154			
[mm] SIM translation stage pos	250.455976	250.466033080201			
[mm] SIM translation stage offset	0	-0.01005468664627074			
[s] Observation start time (MET)	544490431.988475	544490430.96347			
Observation start date	2015-04-03T23:20:32	2015-04-03T23:20:30			
[s] Observation end time (MET)	544499462.238981	544499461.21398			
Observation end date	2015-04-04T01:51:02	2015-04-04T01:51:01			
Read mode	TIMED	TIMED			

## **2.3 Star Slots**

## **2.4 FID Slots**

## A Summary

### A.1 Status

V&V Scientist	Joy Nichols
V&V Date (YYYY-MM-DD)	2015.04.06
V&V Edition	1
V&V Disposition and Status	OK
V&V Charge Time	4.8825187652111

### A.2 Comments