

V&V Reference Report

L2 ASCDS Version : 10.3.3

Observation 51888 - L2 Version 1
Chandra X-Ray Center

L2 Processing Date : May 16 2015

Contents

1	Front	2
2	OBI	3
2.1	OBI	3
2.1.1	Images	3
2.1.2	Bias	3
2.1.3	Parameters	4
2.1.4	Events	4
2.2	Compared Parameters	5
2.3	Star Slots	6
2.4	FID Slots	6
A	Summary	7
A.1	Status	7
A.2	Comments	7

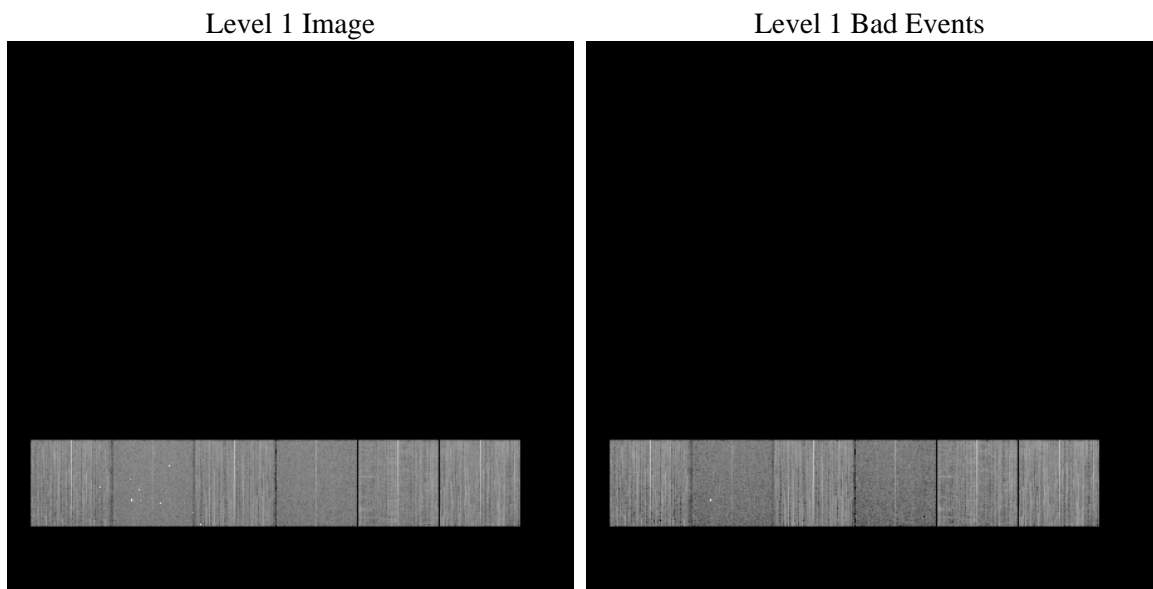
1 Front

seq_num	 	Sequence number
obs_id	51888	Observation id
title	ACIS-456789 diagnostics	Proposal title
observer	CHANDRA engineering request/realtime commanding	Principal investig
object	 	Source name
dtcycle	0	
cycle	P	events from which exps? Prim/Second/Both
ra_targ	0.0	Observer's specified target RA [deg]
dec_targ	0.0	Observer's specified target Dec [deg]
ra_nom	235.97349111049	Nominal RA [deg]
dec_nom	4.9883793524399	Nominal Dec [deg]
roll_nom	171.00431701137	Nominal Roll [deg]
revision	1	Processing version of data
ontime	8245.2395722866	Sum of GTIs [s]
livetime	8140.8333841351	Livetime [s]
ontime4	8245.2395824194	Sum of GTIs [s]
ontime5	8245.2395824194	Sum of GTIs [s]
ontime6	8245.2395824194	Sum of GTIs [s]
ontime7	8245.2395722866	Sum of GTIs [s]
ontime8	8245.2646696568	Sum of GTIs [s]
ontime9	8245.2396024466	Sum of GTIs [s]
l2events	180176	Number of level 2 events

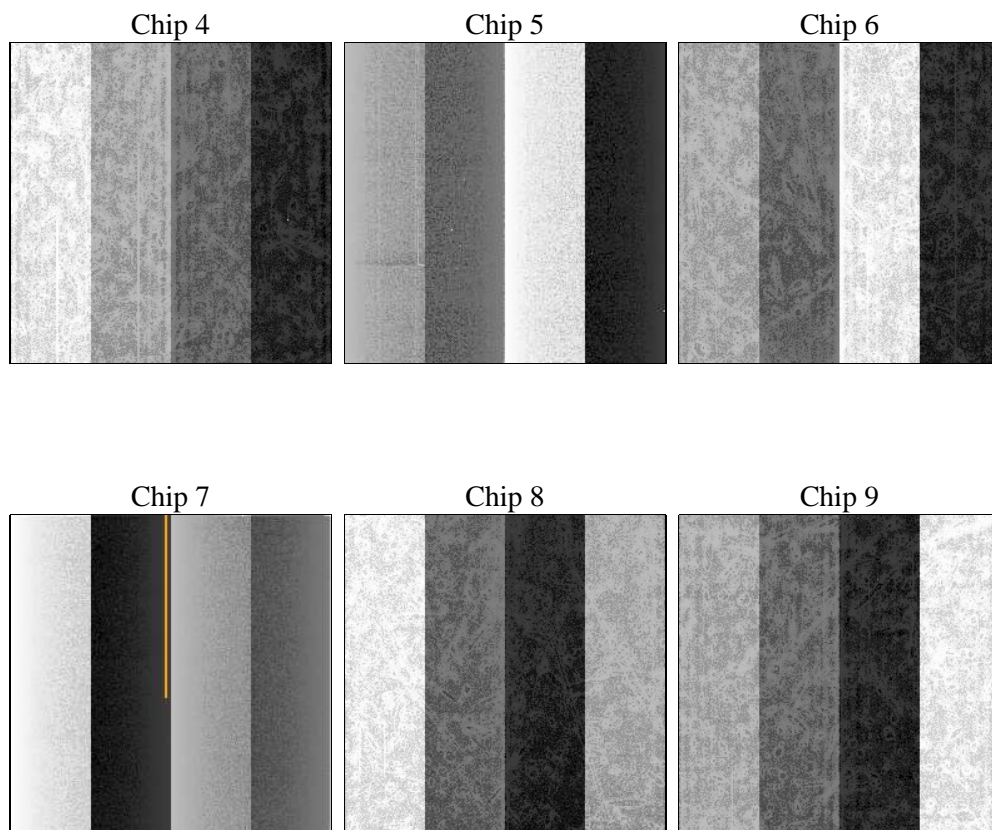
2 OBI

2.1 OBI

2.1.1 Images



2.1.2 Bias



2.1.3 Parameters

obi_num	0	Obi number	sched_exp_time	0.0	[s] Scheduled observation exposure time
ascdsver	10.3.3	Processing system revision	ontime	8245.2395722866	Sum of GTIs [s]
caldsver	4.6.7	 	ontime4	8245.2395824194	Sum of GTIs [s]
date	2015-05-16T17:13:31	Date and time of file creation	ontime5	8245.2395824194	Sum of GTIs [s]
revision	1	Processing version of data	ontime6	8245.2395824194	Sum of GTIs [s]
			ontime7	8245.2395722866	Sum of GTIs [s]
			ontime8	8245.2646696568	Sum of GTIs [s]
			ontime9	8245.2396024466	Sum of GTIs [s]
			l1events	854939	Number of level 1 events

2.1.4 Events

	ccd 4	ccd 5	ccd 6	ccd 7	ccd 8	ccd 9		ccd 4	ccd 5	ccd 6	ccd 7	ccd 8	ccd 9
level 1 events	145197	130575	153290	112993	151062	161822	grade 0 events	14327	9805	12975	5478	13685	10892
rejected events	119665	72997	127025	66738	118780	138578		9%	7%	8%	4%	9%	6%
rejected %	82%	55%	82%	59%	78%	85%	grade 1 events	113	164	48	73	87	56
								0%	0%	0%	0%	0%	0%
							grade 2 events	4597	19750	5996	11663	7204	4940
								3%	15%	3%	10%	4%	3%
							grade 3 events	1667	1536	1453	3375	2502	1588
								1%	1%	0%	2%	1%	0%
							grade 4 events	1663	1363	1351	3352	2442	1608
								1%	1%	0%	2%	1%	0%
							grade 5 events	2988	5455	2777	6798	3836	3309
								2%	4%	1%	6%	2%	2%
							grade 6 events	3278	25124	4490	22387	6457	4216
								2%	19%	2%	19%	4%	2%
							grade 7 events	116564	67378	124200	59867	114849	135213
								80%	51%	81%	52%	76%	83%

2.2 Compared Parameters

Parameter	Planned	Actual	Parameter	Planned	Actual
Instrument	ACIS	ACIS	Obspar format version number	7	7
Detector	ACIS-456789	ACIS-456789	Obspar file type	PREDICTED	ACTUAL
Grating	NONE	NONE	Obspar update status	NONE	UPDATED
Data mode	FAINT	FAINT	Number of optional ACIS chips dropped	0	0
Observation mode	SECONDARY	SECONDARY	On-chip summing requested	N	N
[deg] Pointing RA	0	235.973491110486	Subarray requested	NONE	NONE
[deg] Pointing Dec	0	4.988379352439887	Alternating exposures requested	N	N
[deg] Pointing Roll	0.0	171.0043170113711	[s] Primary exposure time	3.2	3.2
[mm] SIM focus pos	-1.429586	-1.428180813131781			
[mm] SIM defocus	0.1037507710433287	0.1051558262725154			
[mm] SIM translation stage pos	250.455976	250.466033080201			
[mm] SIM translation stage offset	0	-0.01005468664627074			
[s] Observation start time (MET)	548108222.99117	548108221.96617			
Observation start date	2015-05-15T20:17:03	2015-05-15T20:17:01			
[s] Observation end time (MET)	548128481.0923049	548128480.06731			
Observation end date	2015-05-16T01:54:41	2015-05-16T01:54:40			
Read mode	TIMED	TIMED			

2.3 Star Slots

2.4 FID Slots

A Summary

A.1 Status

V&V Scientist	Joy Nichols
V&V Date (YYYY-MM-DD)	2015.05.18
V&V Edition	1
V&V Disposition and Status	OK
V&V Charge Time	8.2452395722866

A.2 Comments