

V&V Reference Report

L2 ASCDS Version : 8.4.5

Observation 5148 - L2 Version 3
Chandra X-Ray Center

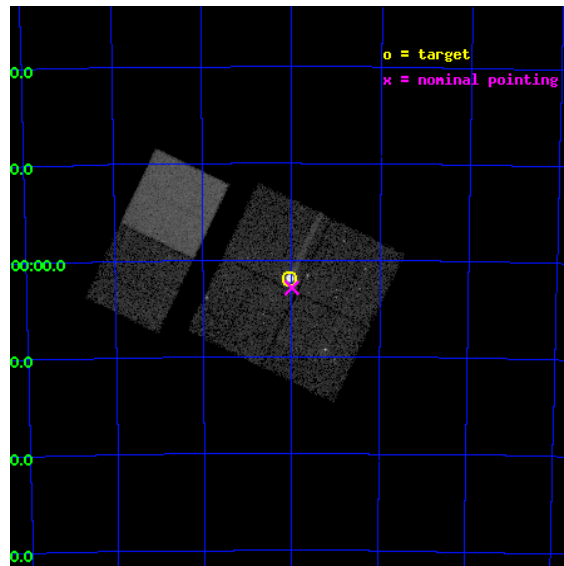
L2 Processing Date : Nov 9 2012

Contents

1	Front	2
2	OBI	3
2.1	OBI	3
2.1.1	Images	3
2.1.2	Bias	3
2.1.3	Parameters	4
2.1.4	Events	4
2.2	Compared Parameters	5
2.3	Aspect	6
2.4	Star Slots	9
2.4.1	Slot 3	9
2.4.2	Slot 4	10
2.4.3	Slot 5	11
2.4.4	Slot 6	12
2.4.5	Slot 7	13
2.5	FID Slots	14
2.5.1	Slot 0	14
2.5.2	Slot 1	15
2.5.3	Slot 2	16
A	Summary	17
A.1	Status	17
A.2	Comments	17

1 Front

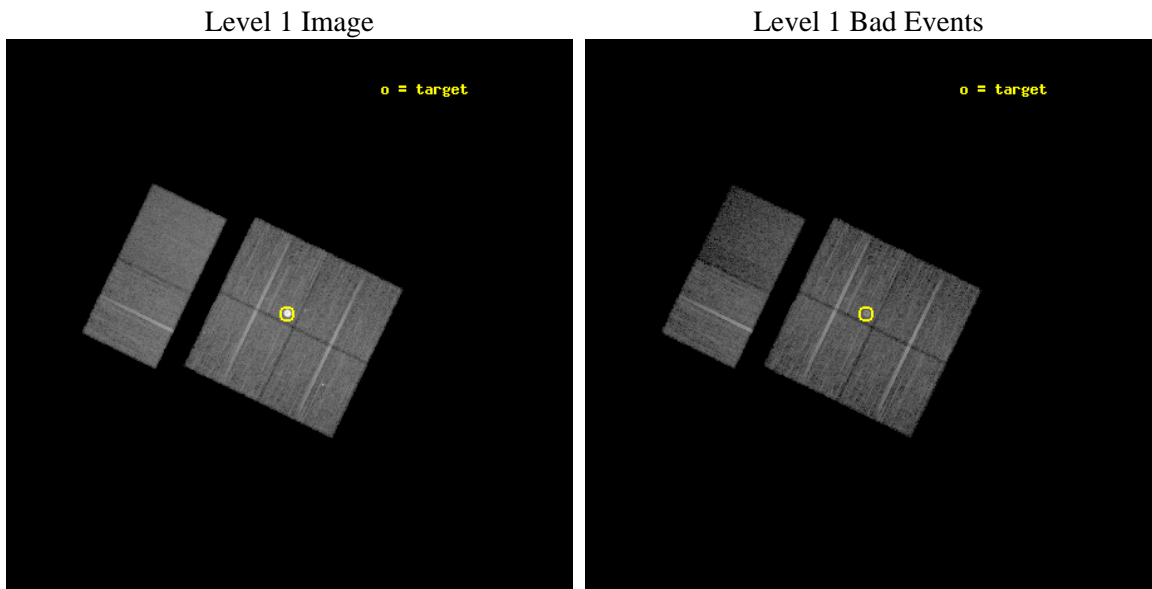
seq_num	590346	Sequence number
obs_id	5148	Observation id
title	AO5A ACIS-I Calibration Observations of E0102-72	Proposal title
observer	Dr. CXC Calibration	Principal investigator
object	E0102-72[I3,-120,-0.5,0.5,0]	Source name
dtcycle	0	
cycle	P	events from which exps? Prim/Second/Both
ra_targ	16.01	Observer's specified target RA [deg]
dec_targ	-72.032028	Observer's specified target Dec [deg]
ra_nom	15.998013145138	Nominal RA [deg]
dec_nom	-72.04779204759	Nominal Dec [deg]
roll_nom	295.78704488113	Nominal Roll [deg]
revision	3	Processing version of data
ontime	19529.480018497	Sum of GTIs [s]
livetime	19282.185983261	Livetime [s]
ontime0	19535.838839024	Sum of GTIs [s]
ontime1	19529.397968382	Sum of GTIs [s]
ontime2	19535.920919001	Sum of GTIs [s]
ontime3	19529.480018497	Sum of GTIs [s]
ontime6	19535.999927223	Sum of GTIs [s]
ontime7	19532.758956939	Sum of GTIs [s]
l2events	148658	Number of level 2 events



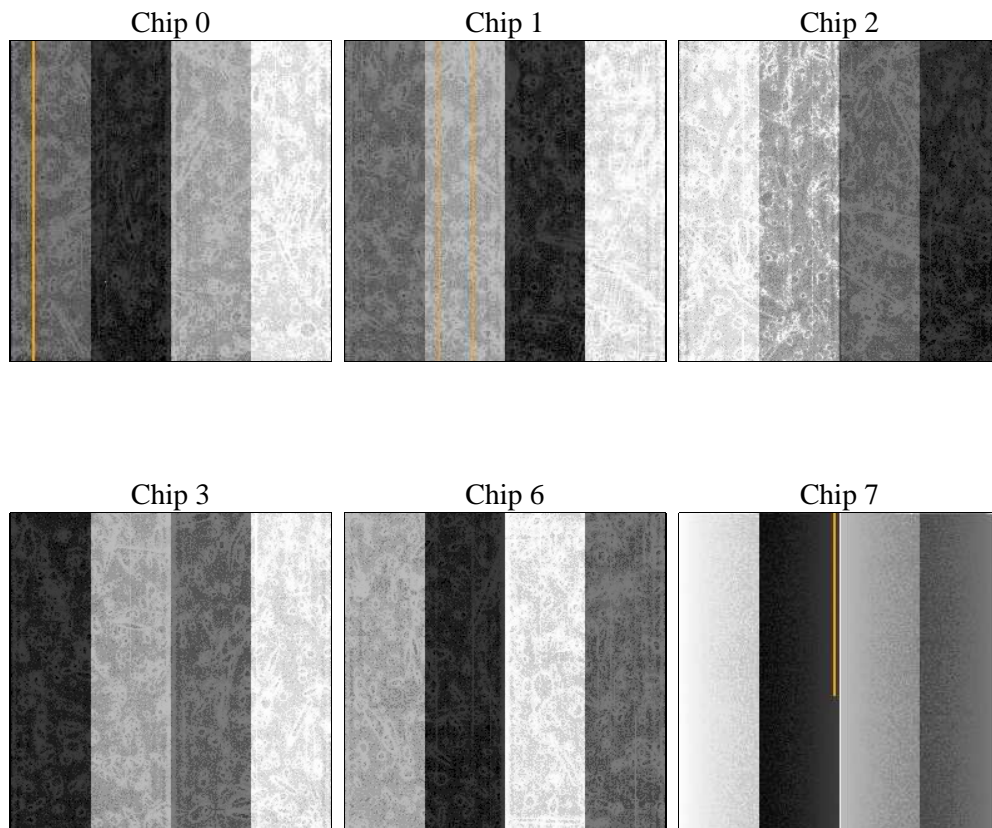
2 OBI

2.1 OBI

2.1.1 Images



2.1.2 Bias



2.1.3 Parameters

obi_num	0	Obi number	sched_exp_time	19781.000000	[s] Scheduled observation exposure time
ascdsver	8.4.5	Processing system revision	ontime	19529.480018497	Sum of GTIs [s]
caldbver	4.5.2	 	ontime0	19535.838839024	Sum of GTIs [s]
date	2012-11-09T08:17:00	Date and time of file creation	ontime1	19529.397968382	Sum of GTIs [s]
revision	3	Processing version of data	ontime2	19535.920919001	Sum of GTIs [s]
			ontime3	19529.480018497	Sum of GTIs [s]
			ontime6	19535.999927223	Sum of GTIs [s]
			ontime7	19532.758956939	Sum of GTIs [s]
			l1events	614947	Number of level 1 events

2.1.4 Events

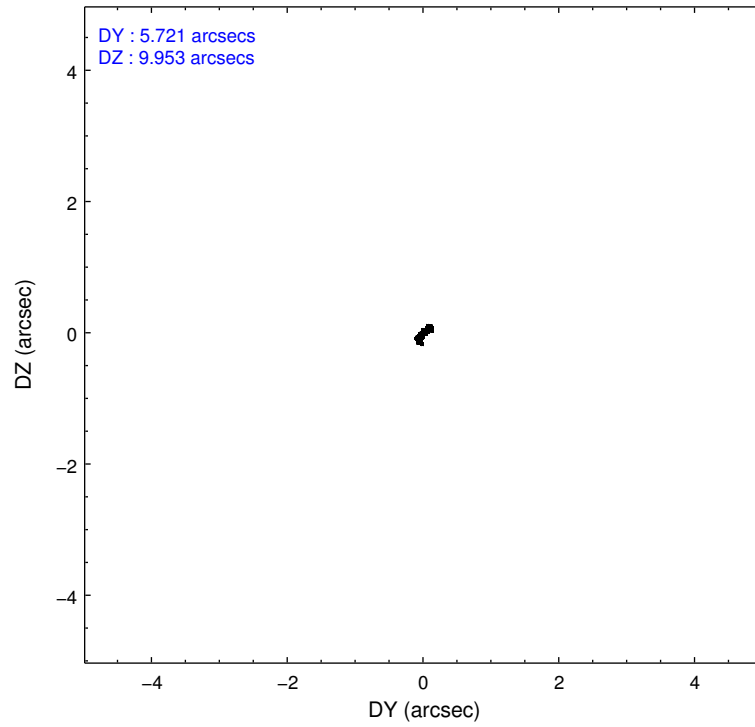
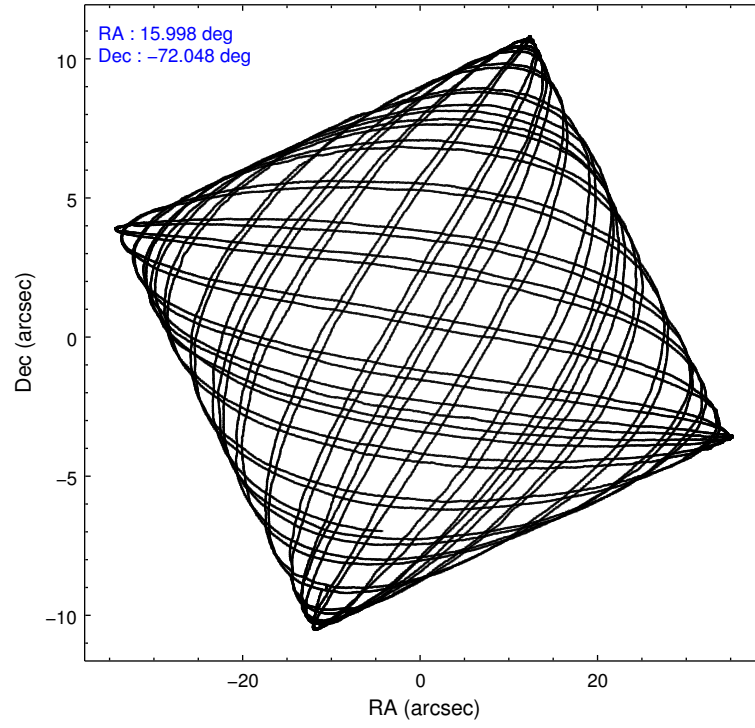
	ccd 0	ccd 1	ccd 2	ccd 3	ccd 6	ccd 7		ccd 0	ccd 1	ccd 2	ccd 3	ccd 6	ccd 7
level 1 events	87861	84430	97953	157939	98023	88741	grade 0 events	4601	4127	4566	62141	3450	4249
rejected events	77166	74055	87628	83875	88451	45407		5%	4%	4%	39%	3%	4%
rejected %	87%	87%	89%	53%	90%	51%	grade 1 events	46	37	53	690	45	101
								0%	0%	0%	0%	0%	0%
							grade 2 events	2321	2091	2120	5951	2060	9049
								2%	2%	2%	3%	2%	10%
							grade 3 events	1141	1160	985	2036	1019	4268
								1%	1%	1%	1%	1%	4%
							grade 4 events	982	1103	1045	2002	1055	4313
								1%	1%	1%	1%	1%	4%
							grade 5 events	2791	3006	2585	3226	3318	9709
								3%	3%	2%	2%	3%	10%
							grade 6 events	1651	1896	1614	1949	1990	21461
								1%	2%	1%	1%	2%	24%
							grade 7 events	74328	71010	84985	79944	85086	35591
								84%	84%	86%	50%	86%	40%

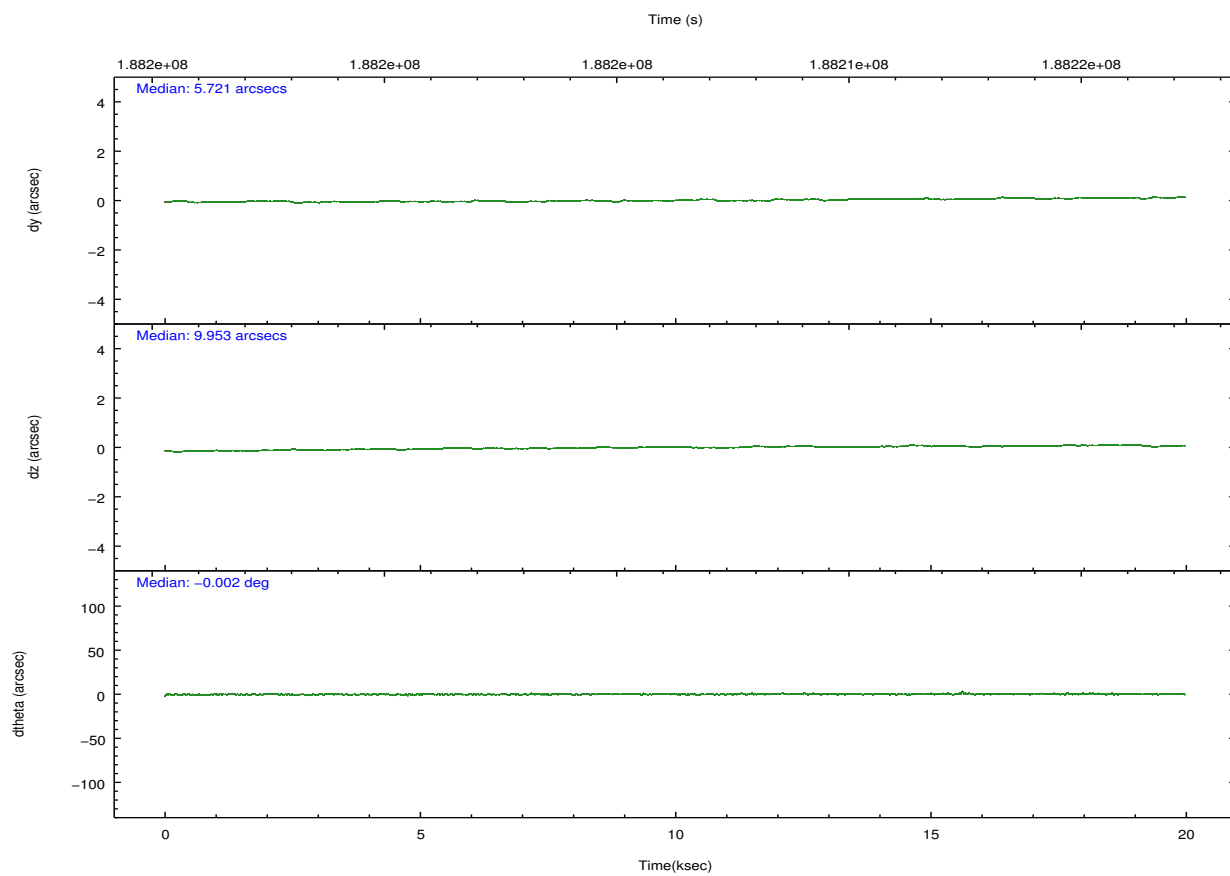
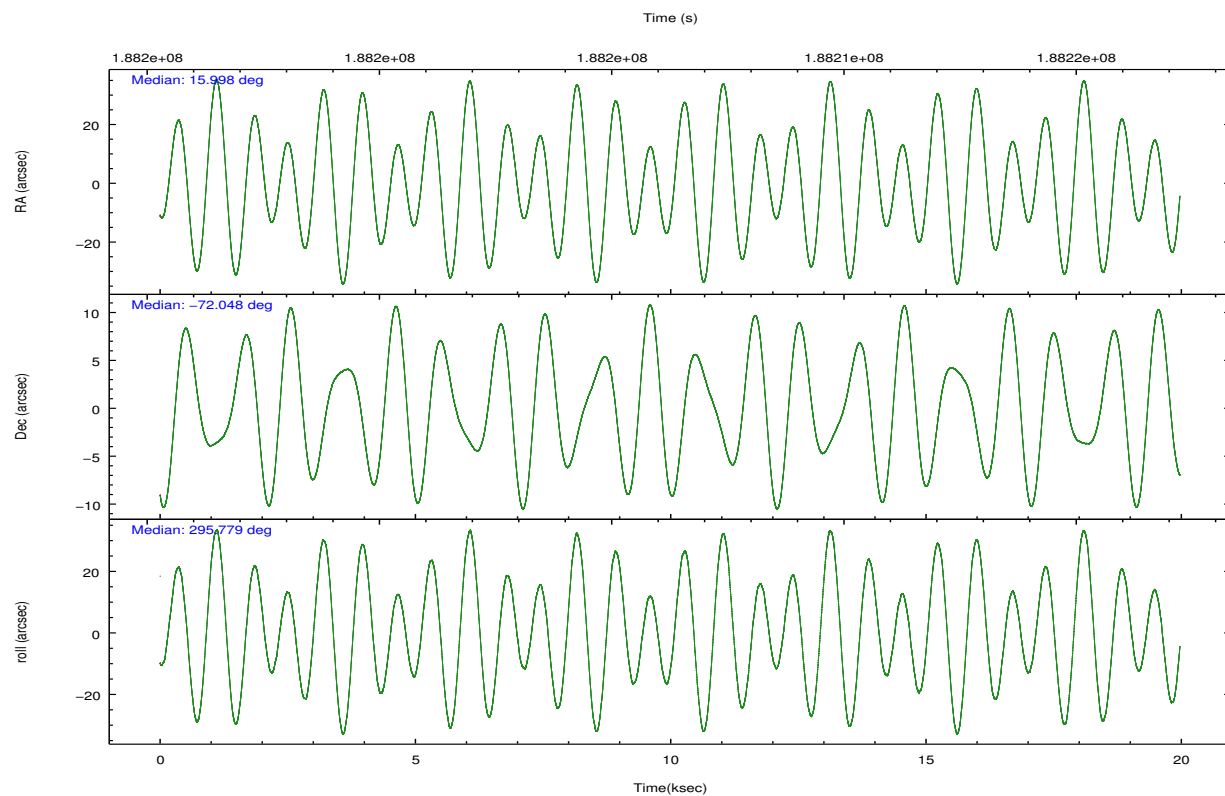
2.2 Compared Parameters

Parameter	Planned	Actual
Instrument	ACIS	ACIS
Detector	ACIS-012367	ACIS-012367
Grating	NONE	NONE
Data mode	VFAINT	VFAINT
Observation mode	POINTING	POINTING
[deg] Pointing RA	15.924417	15.99801314513813
[deg] Pointing Dec	-72.032447	-72.04779204758958
[deg] Pointing Roll	295.508352	295.7870448811298
[s] Window start time (MET)	181353664.184000	181353664.184000
[s] Window stop time (MET)	189216064.184000	189216064.184000
[mm] SIM focus pos	-0.782348	-0.7809083437167272
[mm] SIM defocus	0	0.001439871863259334
[mm] SIM translation stage pos	-233.592463	-233.5874344608287
[mm] SIM translation stage offset	0	-0.005018542100998502
[s] Observation start time (MET)	188196463.184000	188196087.39985
Observation start date	2003-12-19T04:46:39	2003-12-19T04:41:27
[s] Observation end time (MET)	188216244.184000	188216378.30073
Observation end date	2003-12-19T10:16:20	2003-12-19T10:19:38
Read mode	TIMED	TIMED

Parameter	Planned	Actual
Obspar format version number	7	7
Obspar file type	PREDICTED	ACTUAL
Obspar update status	NONE	UPDATED
Number of optional ACIS chips dropped	0	0
On-chip summing requested	N	N
Subarray requested	NONE	NONE
Alternating exposures requested	N	N
[s] Primary exposure time	0.000000	3.2

2.3 Aspect



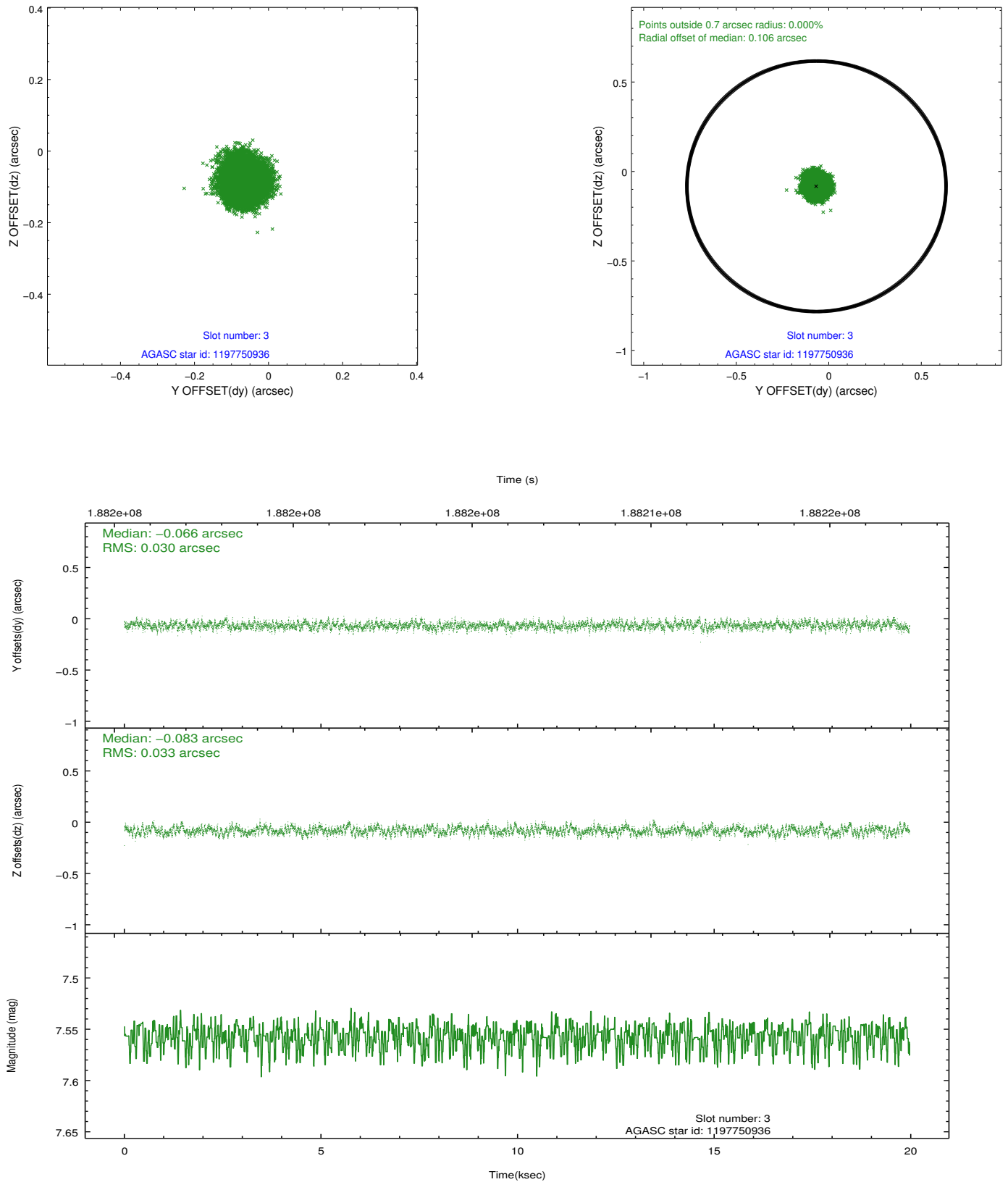


Slot Statistics

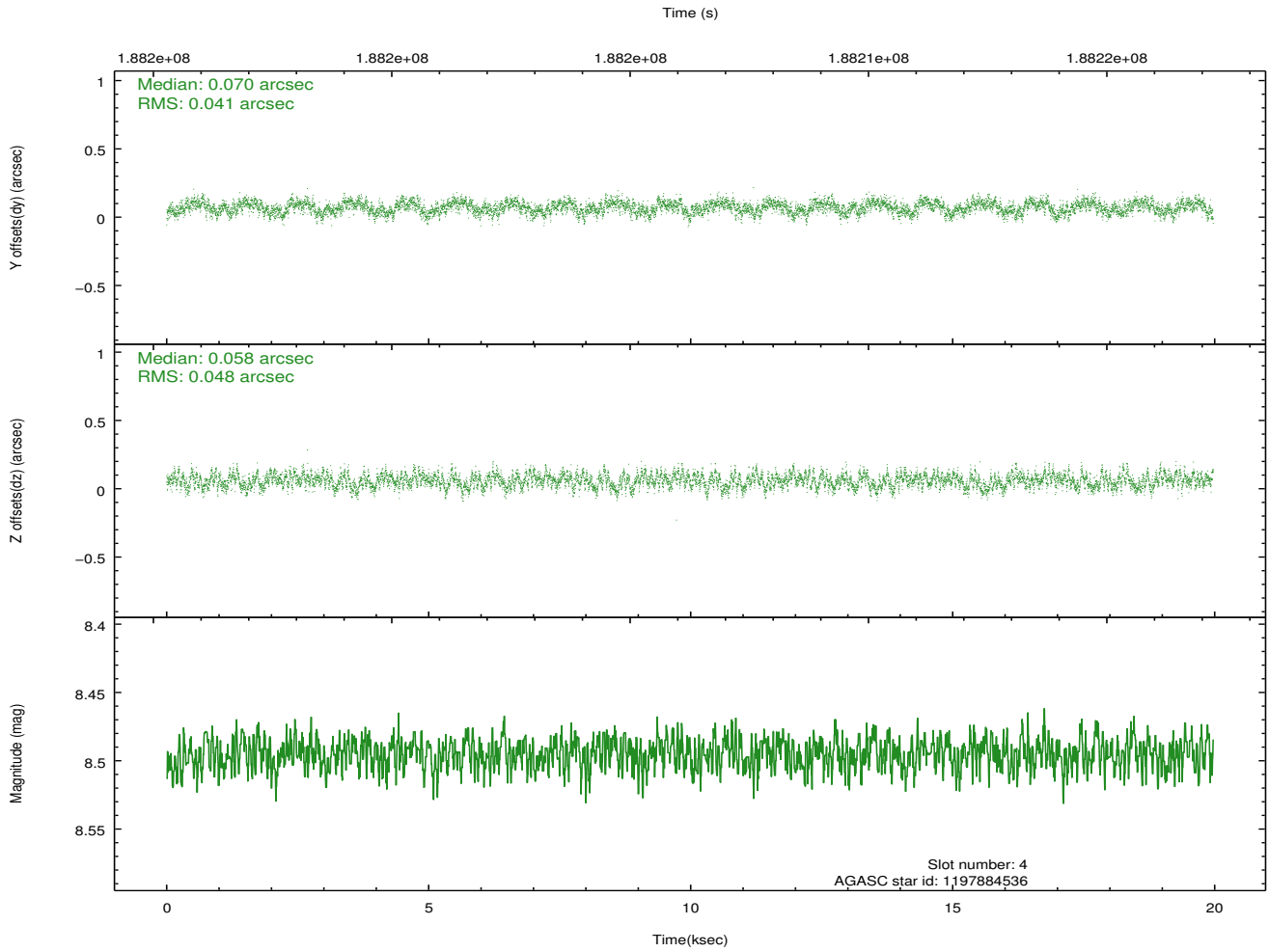
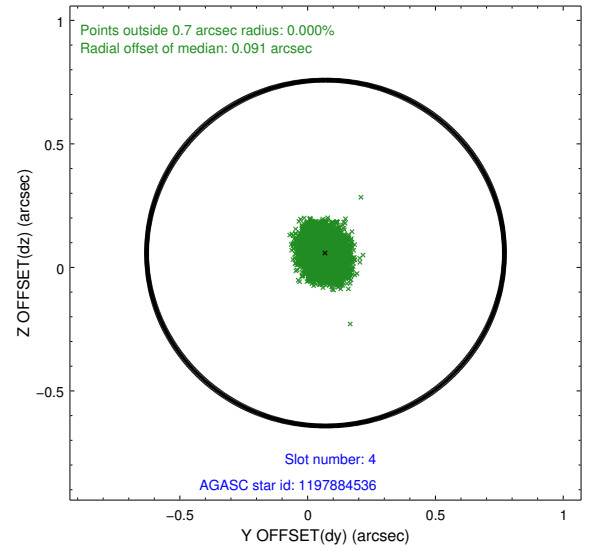
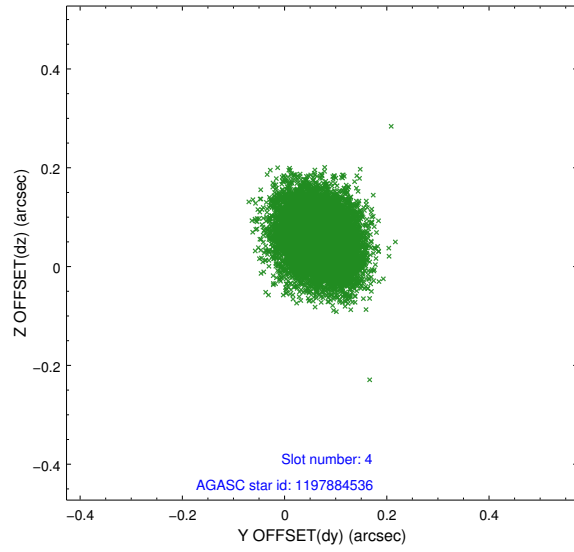
slot	status	id	mag	n_pts	med_dy	med_dz	dr1	dr2	ra	dec	mean_y	mean_z
0	FID	ACIS-I-1	7.24	4870	0.006	0.021	0.007	0.011	0.000000	0.000000	933.99	-833.39
1	FID	ACIS-I-5	7.23	4869	-0.144	0.032	0.006	0.011	0.000000	0.000000	-1814.17	1064.02
2	FID	ACIS-I-6	7.25	4869	0.047	0.017	0.007	0.011	0.000000	0.000000	399.37	1708.72
3	GUIDE	1197750936	7.56	9740	-0.066	-0.083	0.048	0.075	15.387940	-71.549550	-1829.44	195.61
4	GUIDE	1197884536	8.50	9735	0.070	0.058	0.067	0.107	17.160729	-71.835289	-30.37	1551.93
5	GUIDE	1197884712	8.30	9737	0.096	0.050	0.063	0.101	16.087398	-72.252690	793.19	-179.66
6	GUIDE	1197885328	7.22	9740	-0.002	-0.036	0.074	0.114	16.283090	-71.733943	-794.31	827.96
7	GUIDE	1198189696	7.38	9738	-0.094	0.010	0.063	0.095	15.223750	-72.697522	1842.15	-1709.53

2.4 Star Slots

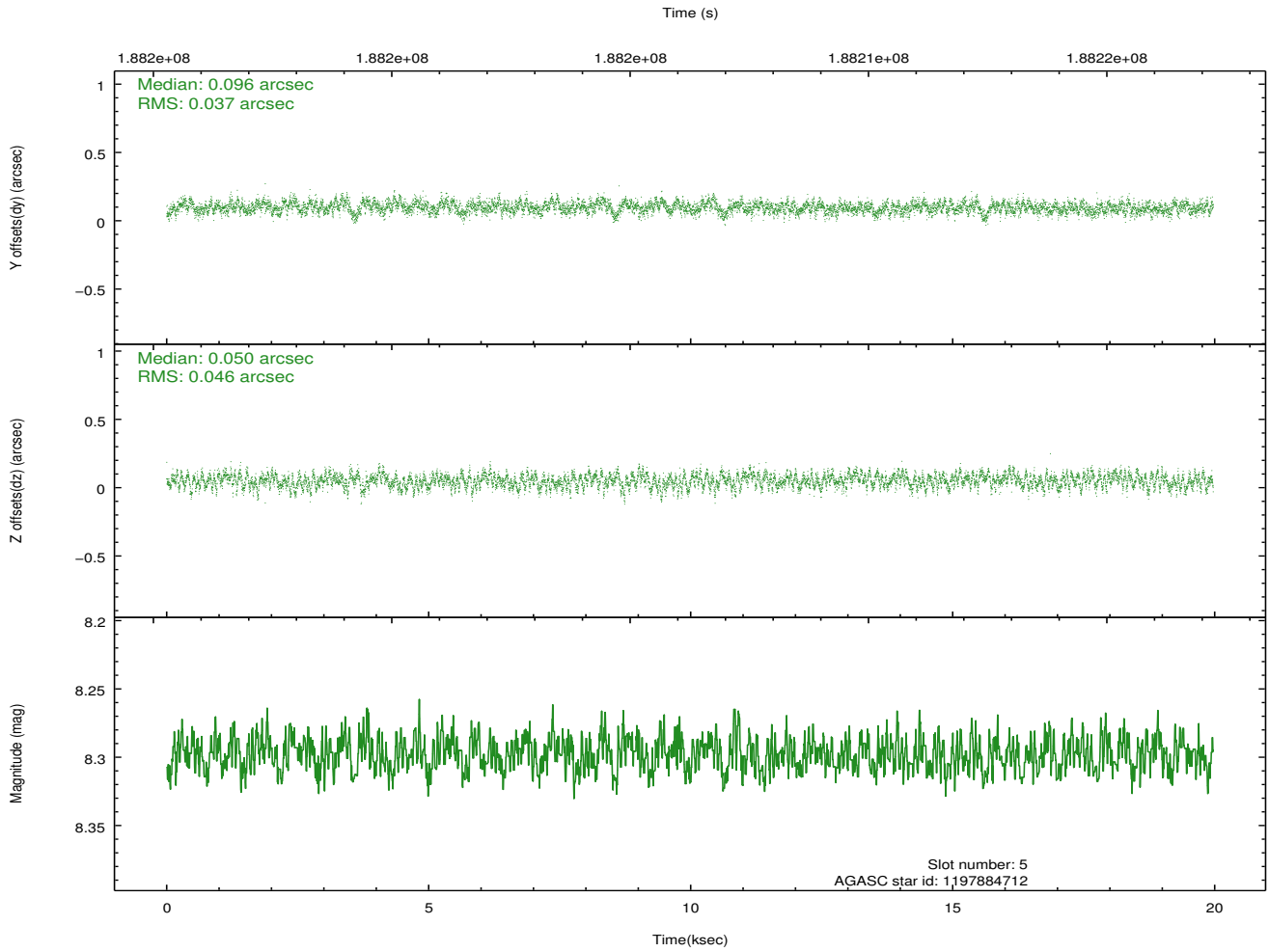
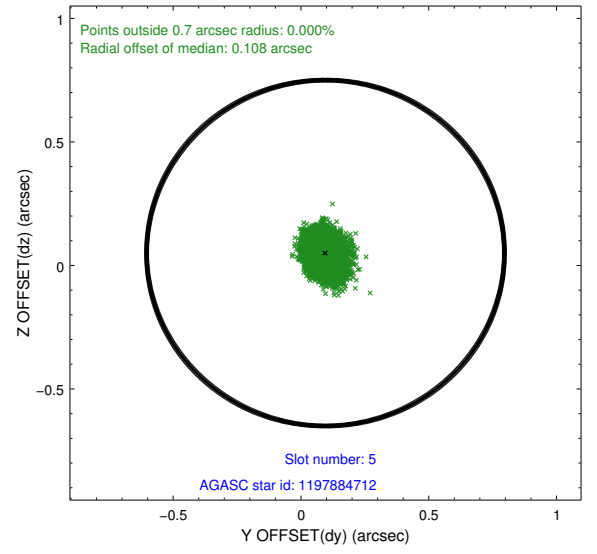
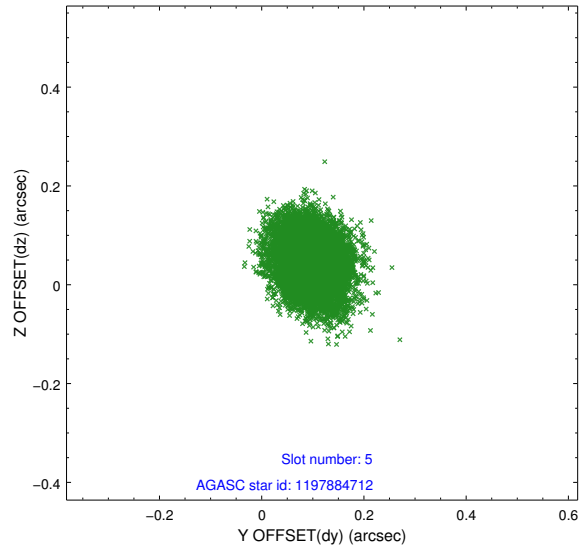
2.4.1 Slot 3



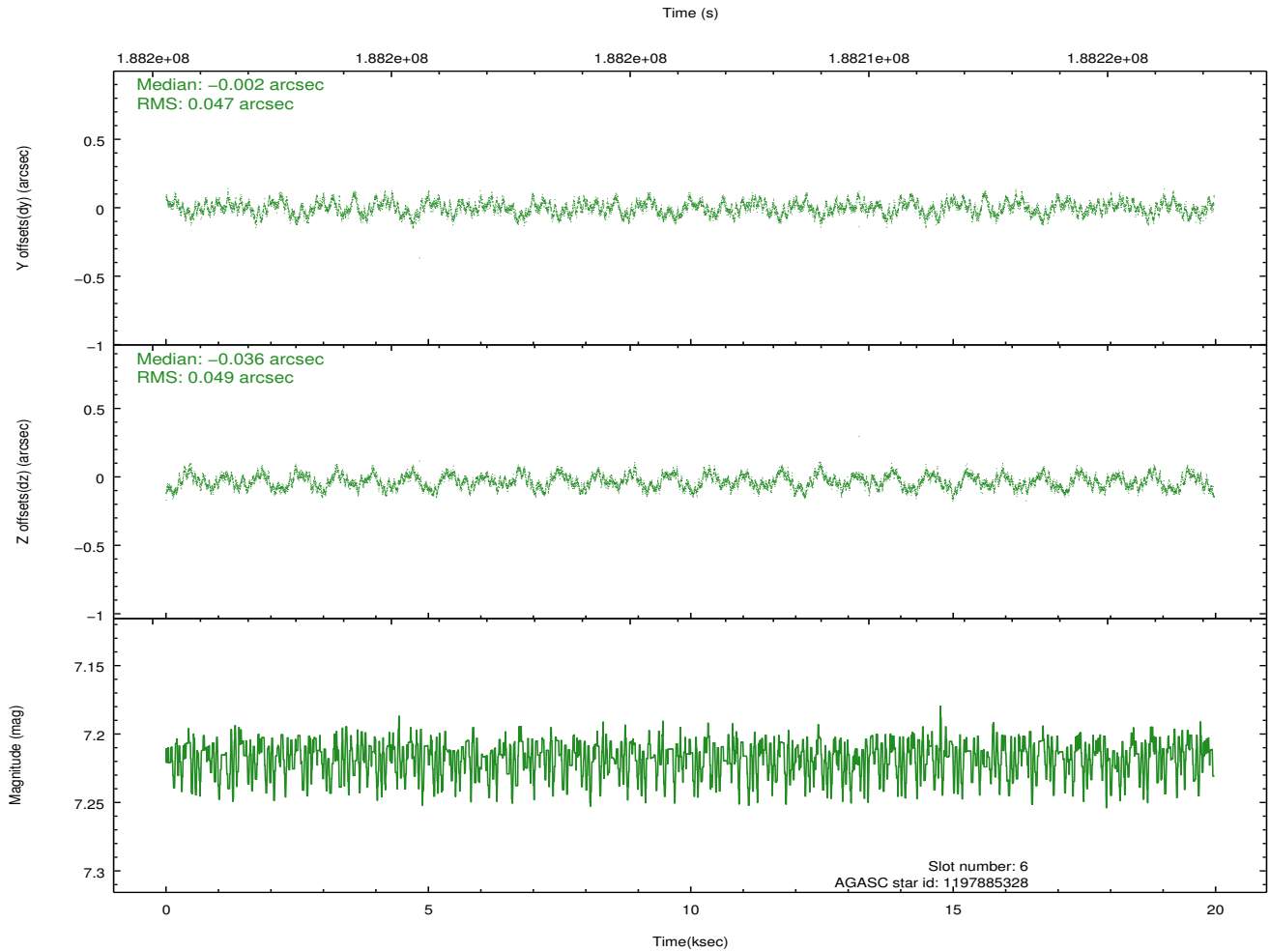
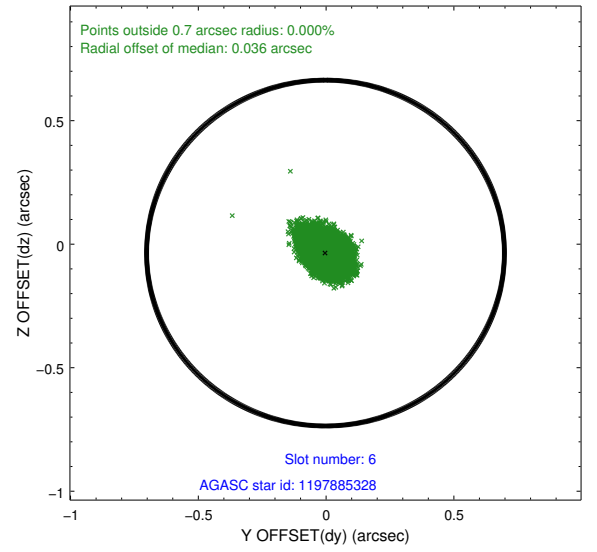
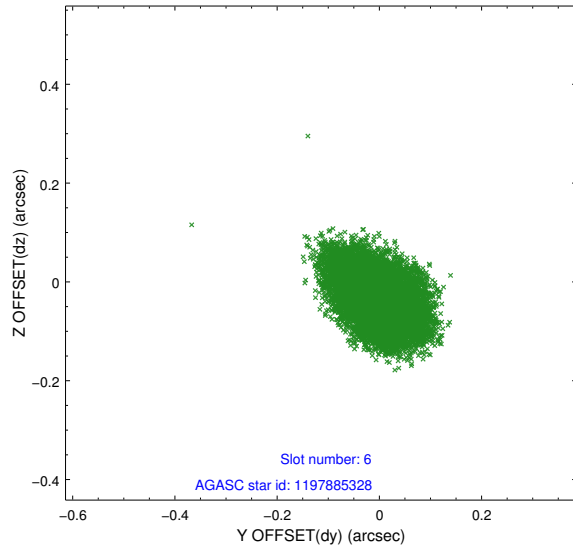
2.4.2 Slot 4



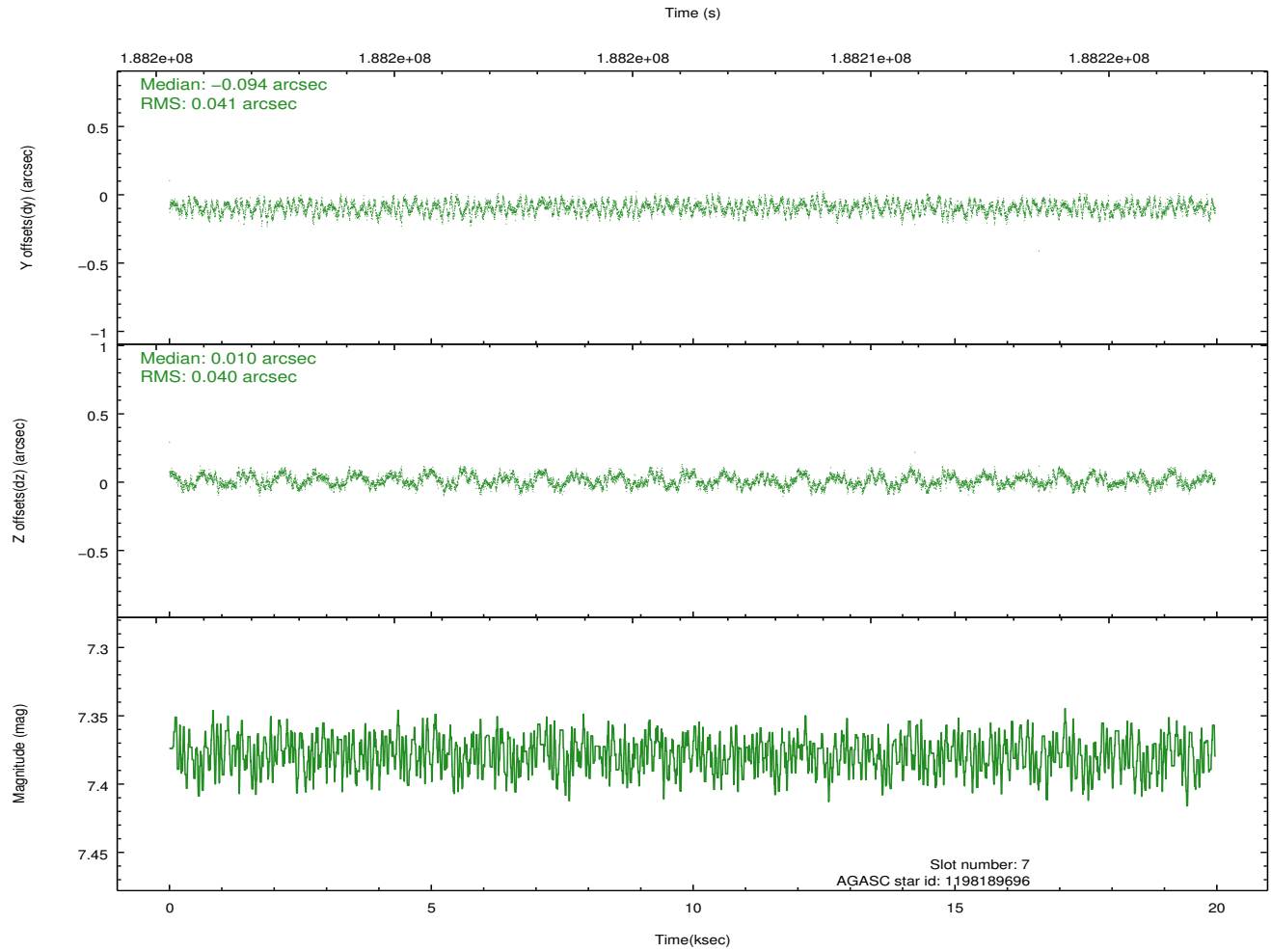
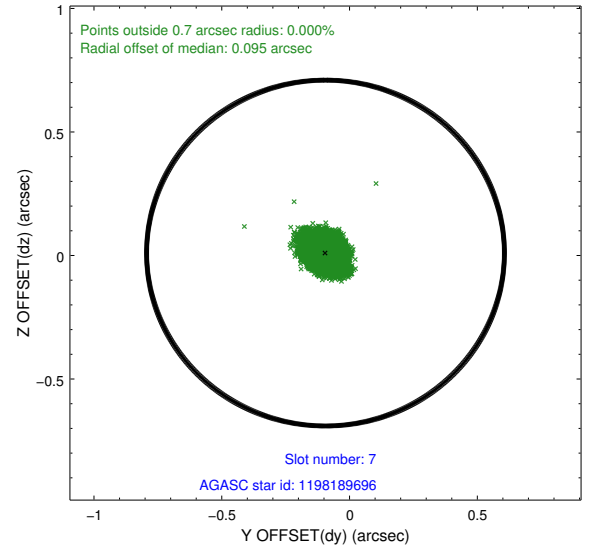
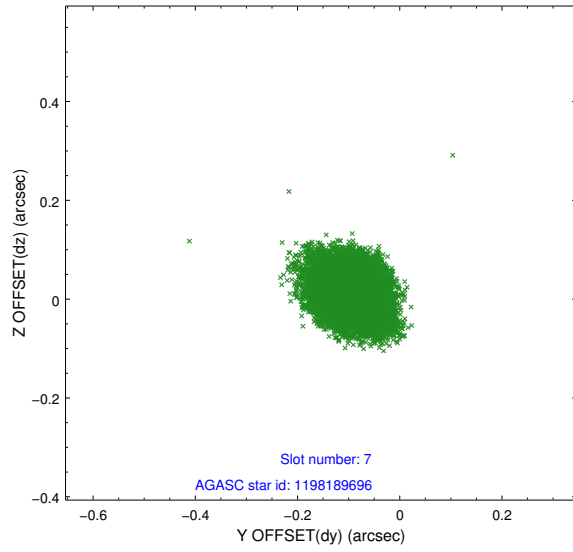
2.4.3 Slot 5



2.4.4 Slot 6

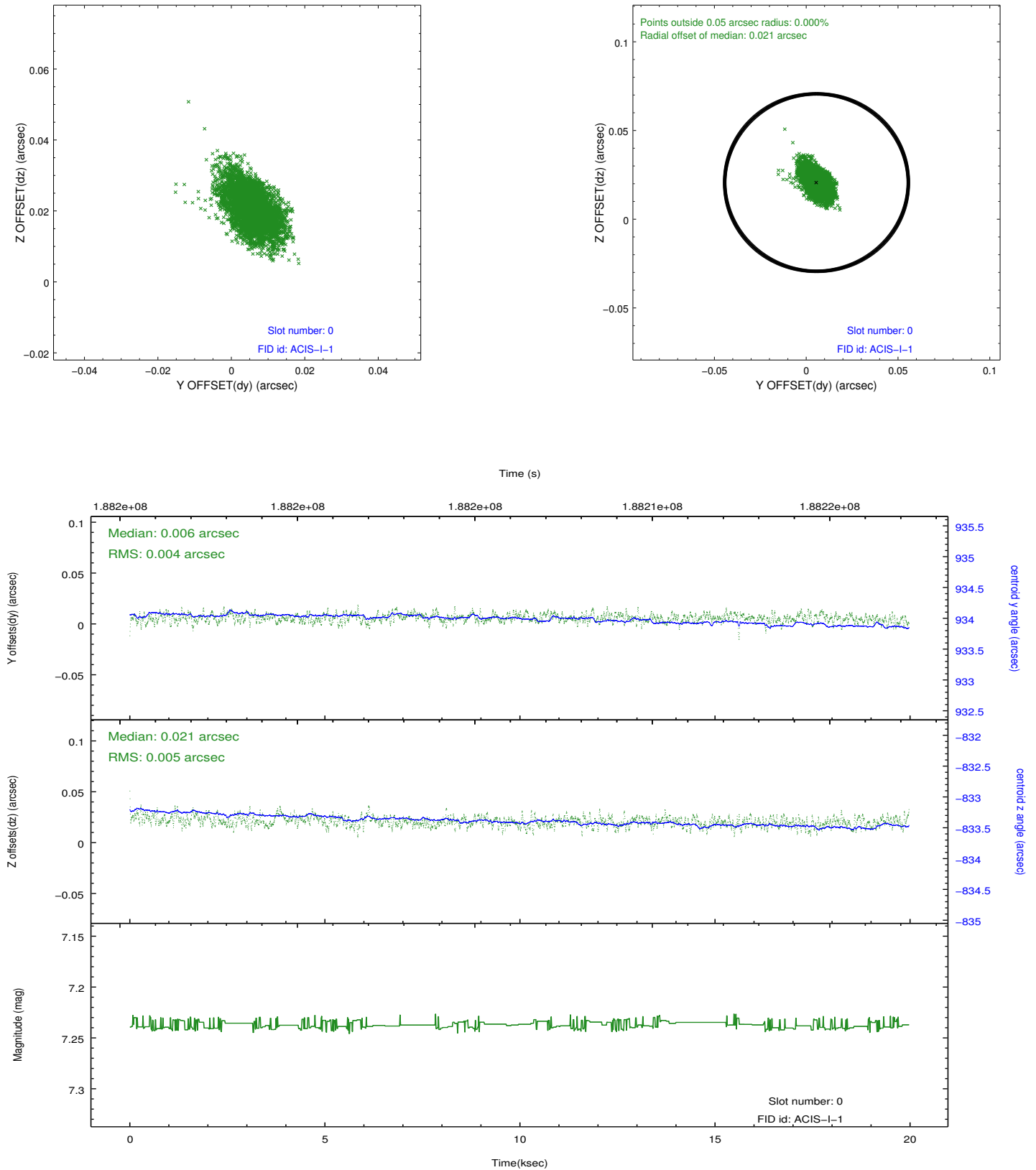


2.4.5 Slot 7

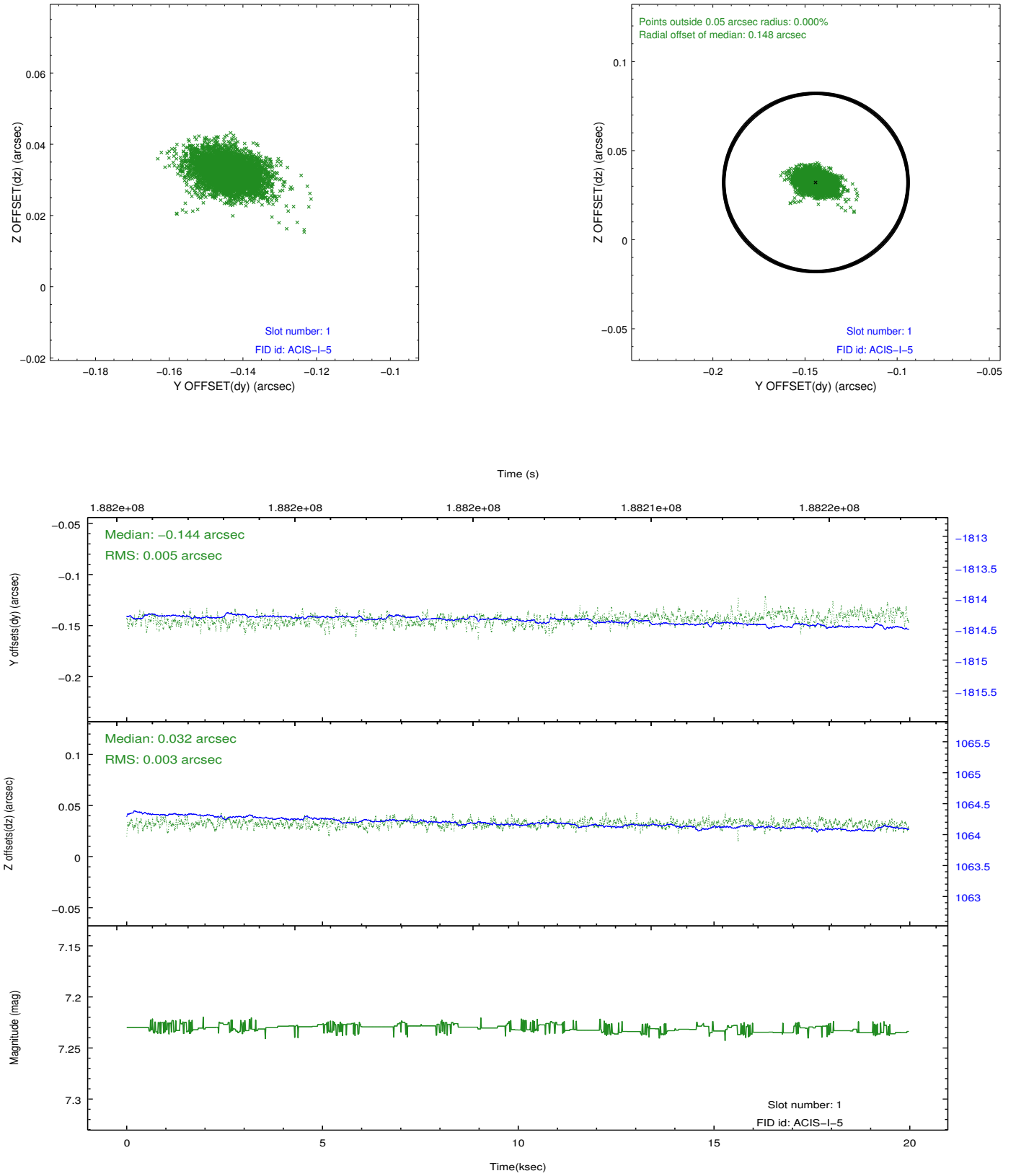


2.5 FID Slots

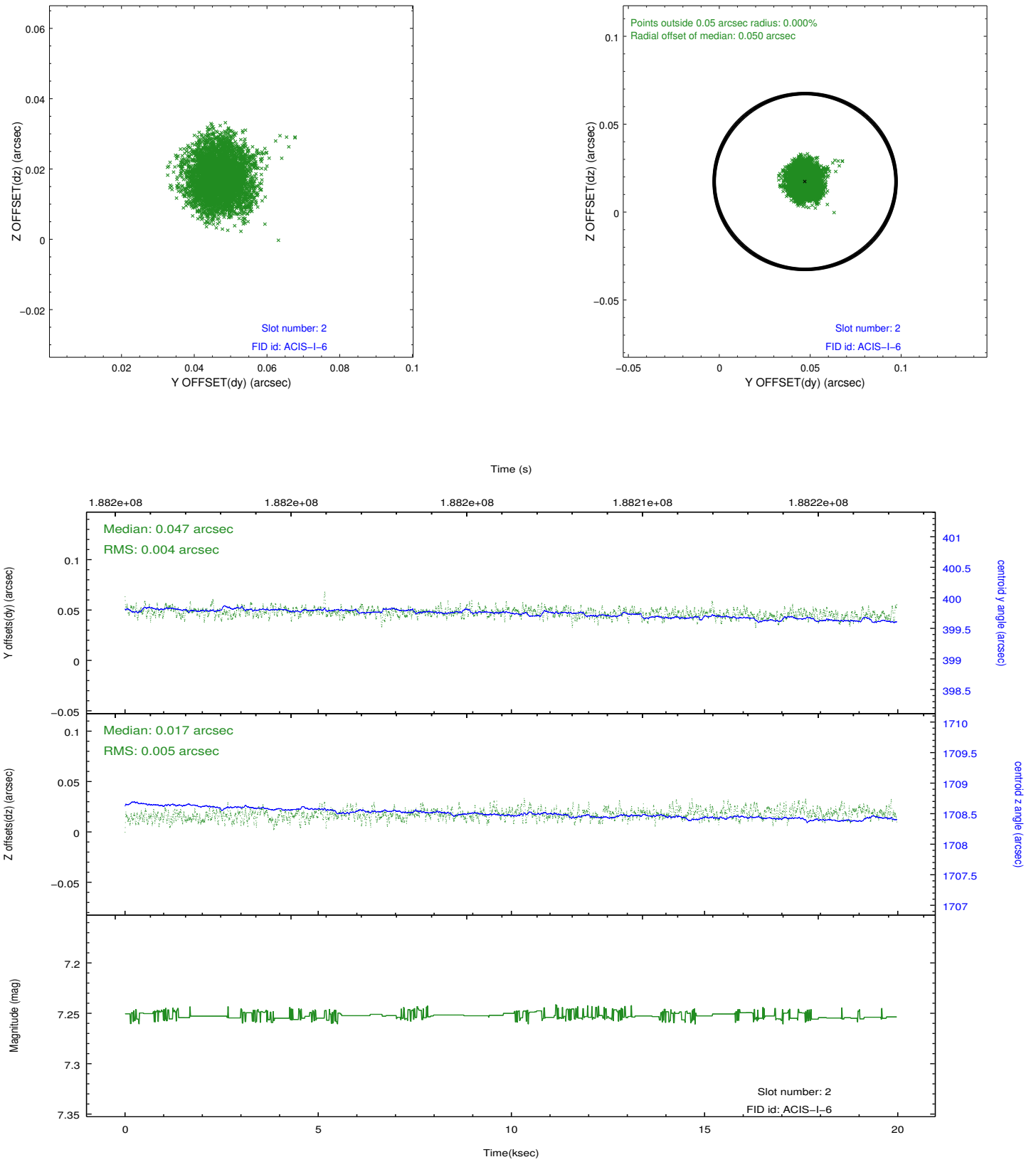
2.5.1 Slot 0



2.5.2 Slot 1



2.5.3 Slot 2



A Summary

A.1 Status

V&V Scientist	Jen Lauer
V&V Date (YYYY-MM-DD)	2012.12.03
V&V Edition	1
V&V Disposition and Status	OK
V&V Charge Time	19.532

A.2 Comments

Window constraint met.