

V&V Reference Report

L2 ASCDS Version : 7.6.7

Observation 4938 - L2 Version 002
Chandra X-Ray Center

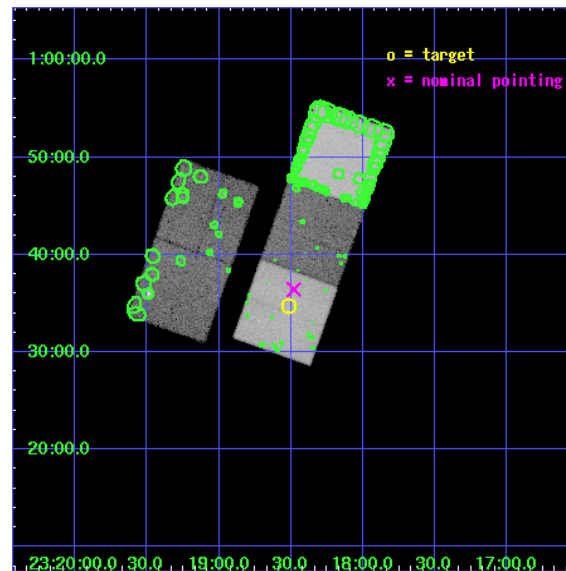
L2 Processing Date: Mar 3 2006

Contents

1	Front	2
2	OBI	3
2.1	OBI	3
2.1.1	Images	3
2.1.2	Bias	3
2.1.3	Parameters	4
2.1.4	Events	4
2.2	Compared Parameters	5
2.3	Aspect	6
2.4	Star Slots	9
2.4.1	Slot 3	9
2.4.2	Slot 4	10
2.4.3	Slot 5	11
2.4.4	Slot 6	12
2.4.5	Slot 7	13
2.5	FID Slots	14
2.5.1	Slot 0	14
2.5.2	Slot 1	15
2.5.3	Slot 2	16
3	Point Sources	17
A	Summary	18
A.1	Status	18
A.2	Comments	18

1 Front

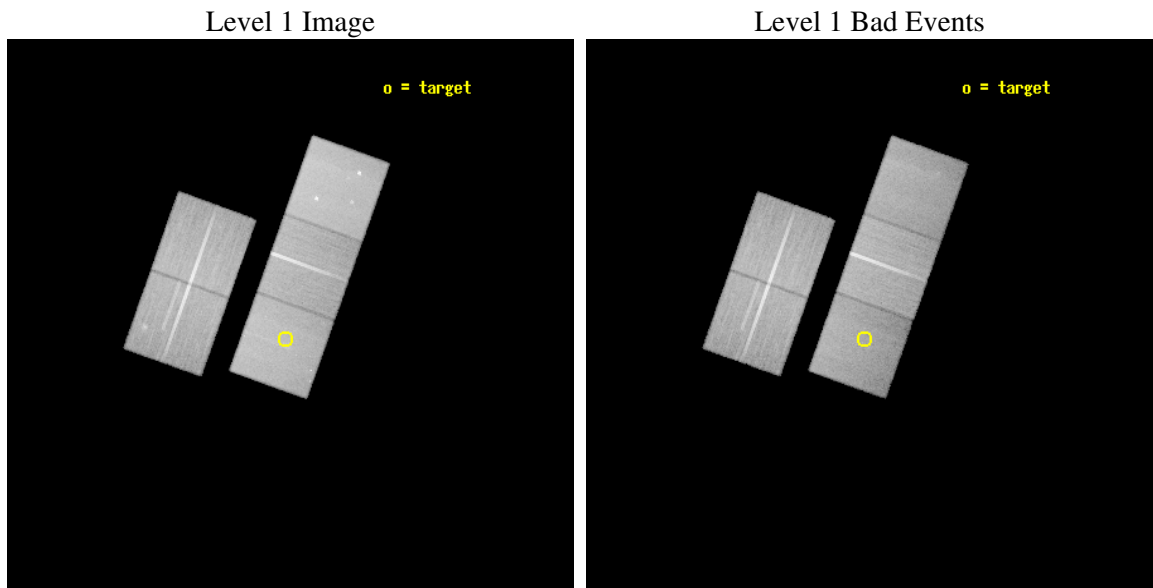
seq_num	800389
obs_id	4938
title	Continuation of a Chandra Survey of a Uniformly Selected Sample of High-Redshift Galaxy Clusters
observer	Prof. Gordon Garmire
object	RCS2318.5+0034
dtcycle	0
cycle	P
ra_targ	349.628333
dec_targ	0.579167
ra_nom	349.62022388845
dec_nom	0.60707349376342
roll_nom	109.66472707873
revision	2
ontime	51122.099901706
livetime	50454.152030948
ontime2	51109.536010742
ontime3	51122.099901706
ontime5	51122.099901706
ontime6	51115.817951322
ontime7	51122.099901706
l2events	428645



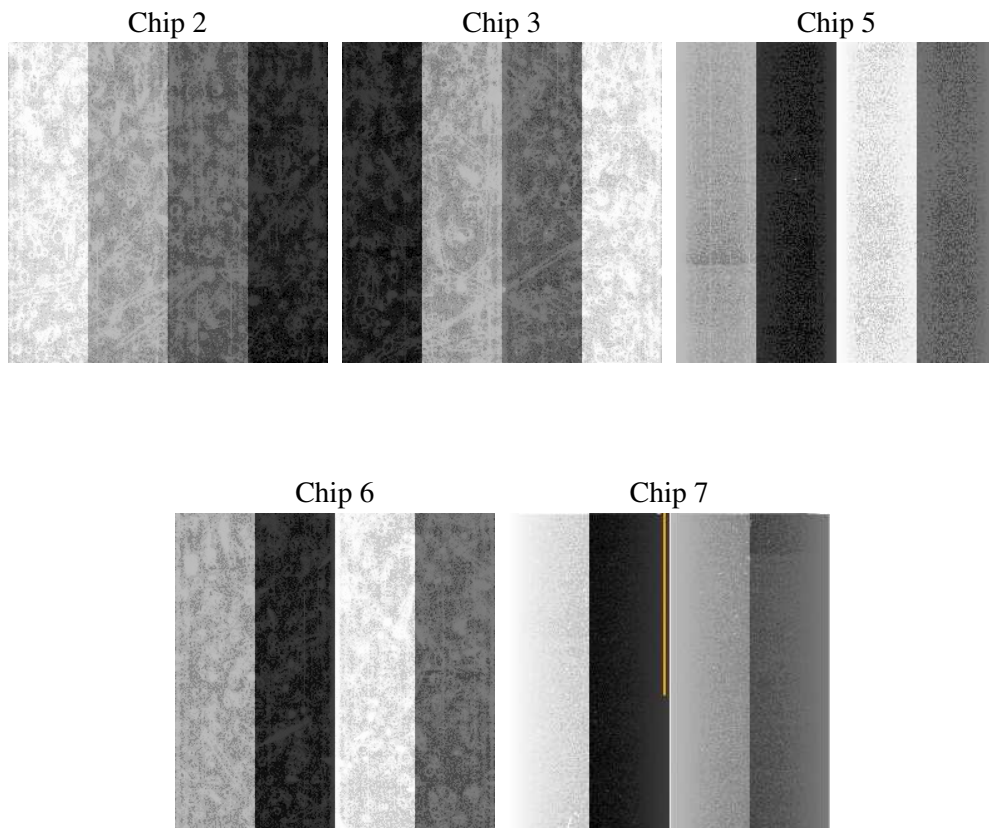
2 OBI

2.1 OBI

2.1.1 Images



2.1.2 Bias



2.1.3 Parameters

obi_num	0
ascdsver	7.6.7
caldbver	3.2.1
date	2006-03-03T06:56:01
revision	2

sched_exp_time	51000.000000
ontime	51521.846416265
ontime2	51509.282525301
ontime3	51521.846396357
ontime5	51521.846416265
ontime6	51515.56446588
ontime7	51521.846416265
l1events	1794214

2.1.4 Events

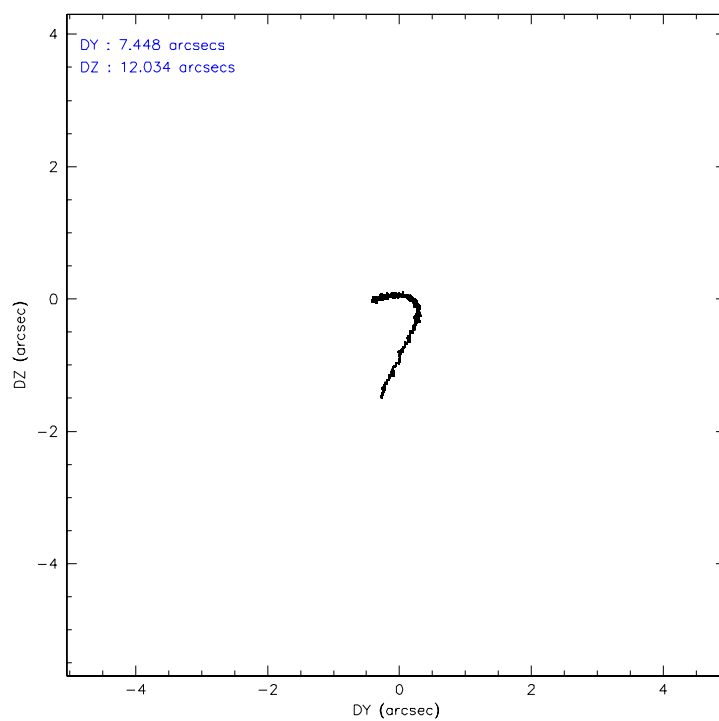
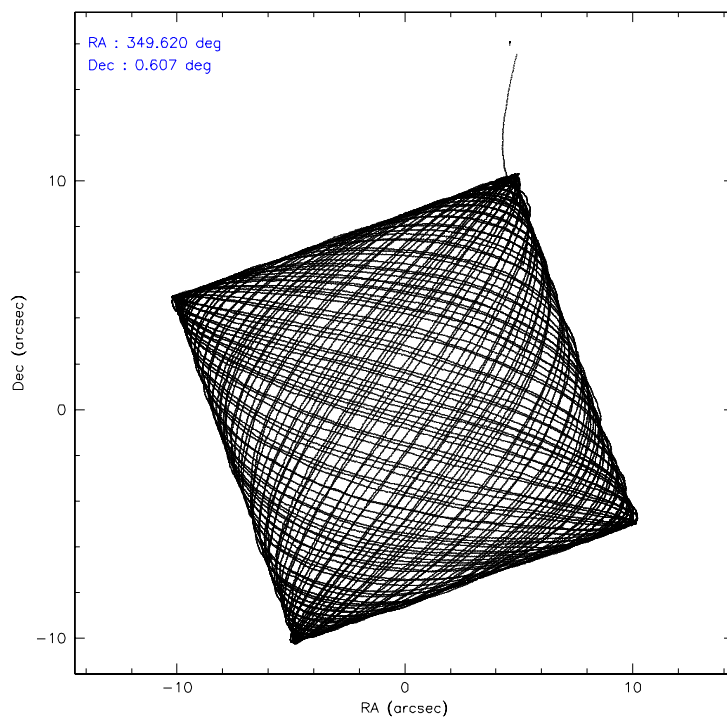
	ccd 2	ccd 3	ccd 5	ccd 6	ccd 7
level 1 events	343614	322260	435956	328234	364150
rejected events	312478	291661	229315	294724	209458
rejected %	90%	90%	52%	89%	57%

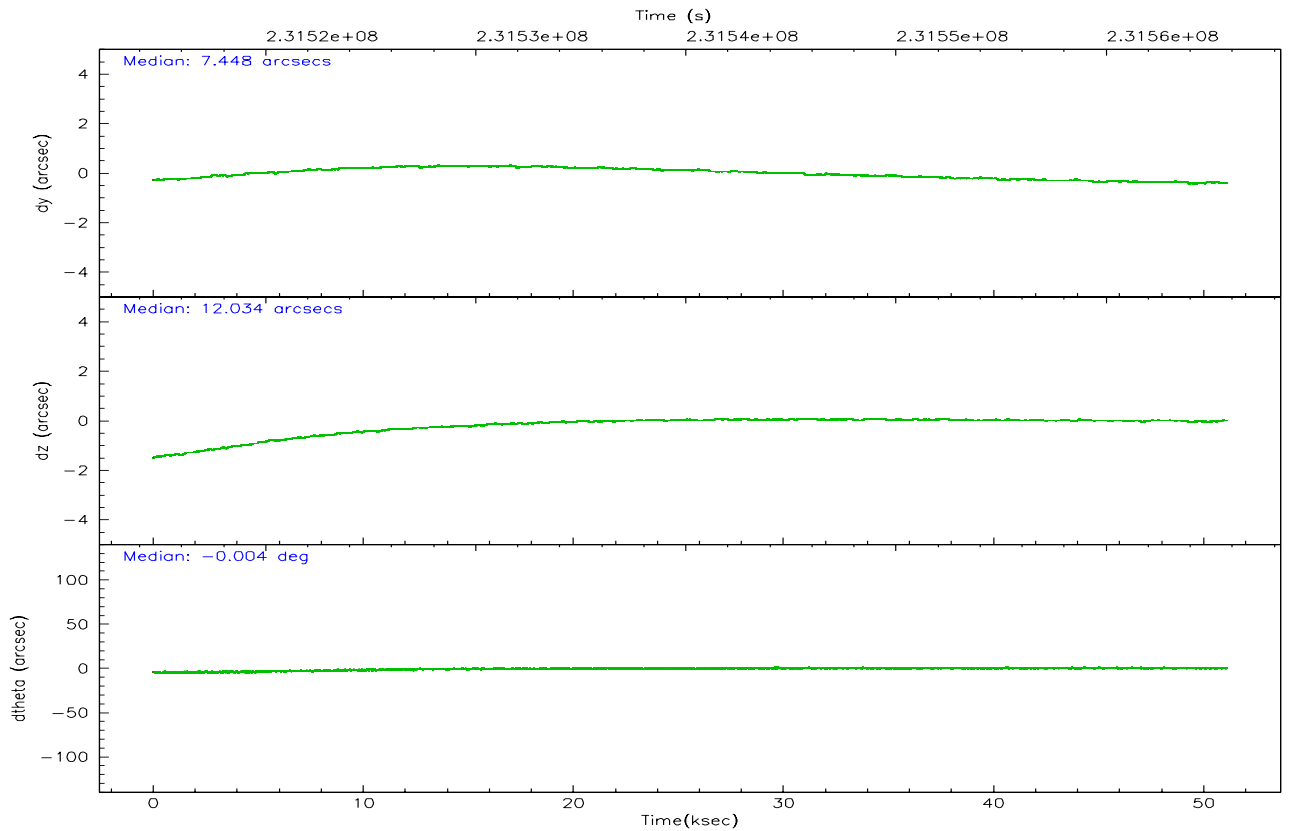
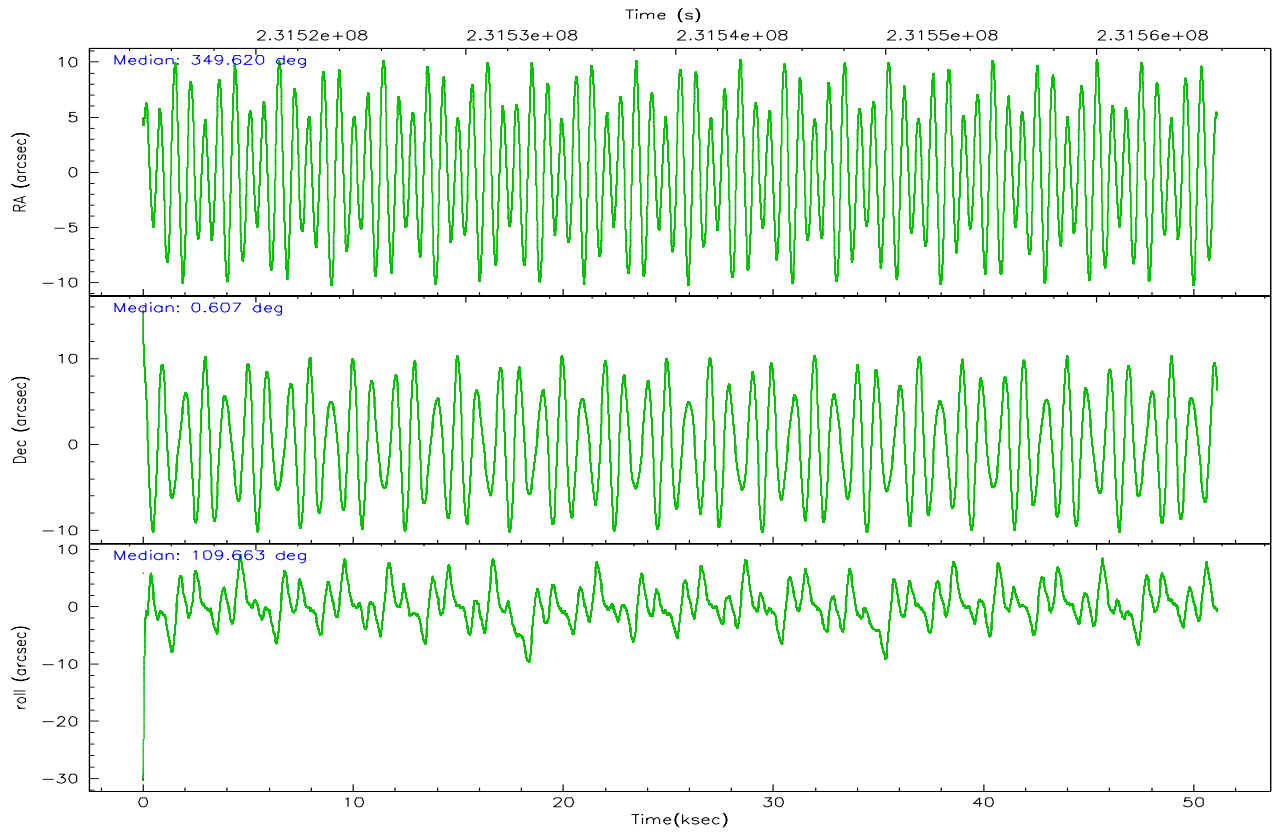
	ccd 2	ccd 3	ccd 5	ccd 6	ccd 7
grade 0 events	11152	11304	11211	11525	10055
	3%	3%	2%	3%	2%
grade 1 events	170	178	168	139	196
	0%	0%	0%	0%	0%
grade 2 events	7491	6543	67092	7481	38577
	2%	2%	15%	2%	10%
grade 3 events	3537	3515	5710	3871	9771
	1%	1%	1%	1%	2%
grade 4 events	3521	3539	5586	3697	9571
	1%	1%	1%	1%	2%
grade 5 events	10918	12969	24739	13764	29296
	3%	4%	5%	4%	8%
grade 6 events	5726	5936	118727	7160	87913
	1%	1%	27%	2%	24%
grade 7 events	301099	278276	202723	280597	178771
	87%	86%	46%	85%	49%

2.2 Compared Parameters

Parameter	Planned	Actual	Parameter	Planned	Actual
Instrument	ACIS	ACIS	Obspar format version number	6	6
Detector	ACIS-23567	ACIS-23567	Obspar file type	PREDICTED	ACTUAL
Grating	NONE	NONE	Obspar update status	NONE	UPDATED
Data mode	VFAINT	VFAINT	On-chip summing requested	N	N
Observation mode	POINTING	POINTING	Subarray requested	NONE	NONE
Pointing RA	349.641205	349.6202238884462	Alternating exposures requested	N	N
Pointing Dec	0.589737	0.6070734937634177	Primary exposure time	0.000000	3.1
Pointing Roll	109.507885	109.6647270787298			
SIM focus pos (mm)	-0.684267	-0.6828225247311905			
SIM defocus (mm)	0	0.001444936568705701			
SIM translation stage pos (mm)	-190.132523	-190.1400660498719			
SIM translation stage offset (mm)	0	0.00754346686406393			
Observation start time	231514761.184000	231513532.84166			
Observation start date	2005-05-03T13:38:17	2005-05-03T13:18:52			
Observation end time	231565761.184000	231566364.93156			
Observation end date	2005-05-04T03:48:17	2005-05-04T03:59:24			
Read mode	TIMED	TIMED			

2.3 Aspect



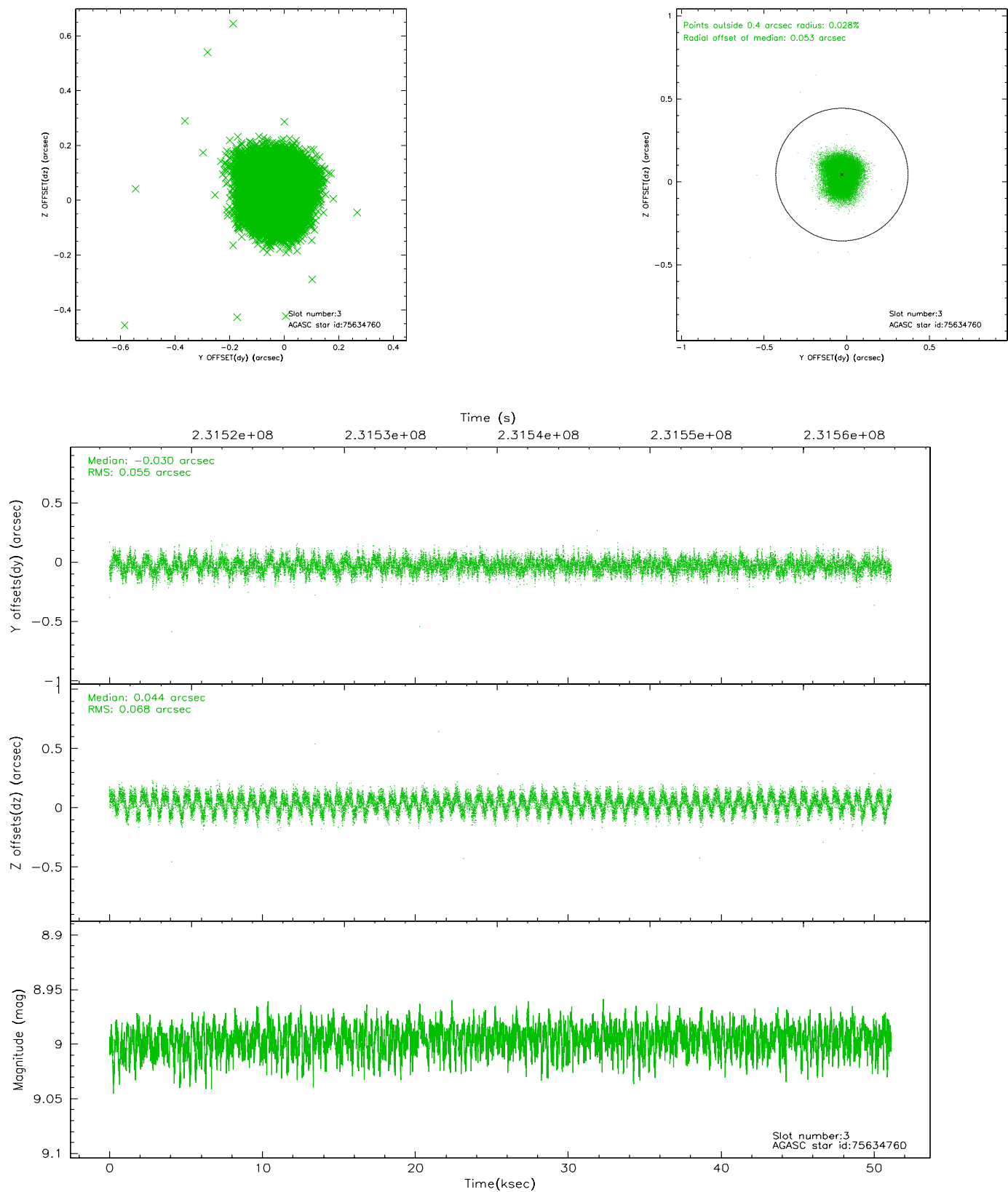


Slot Statistics

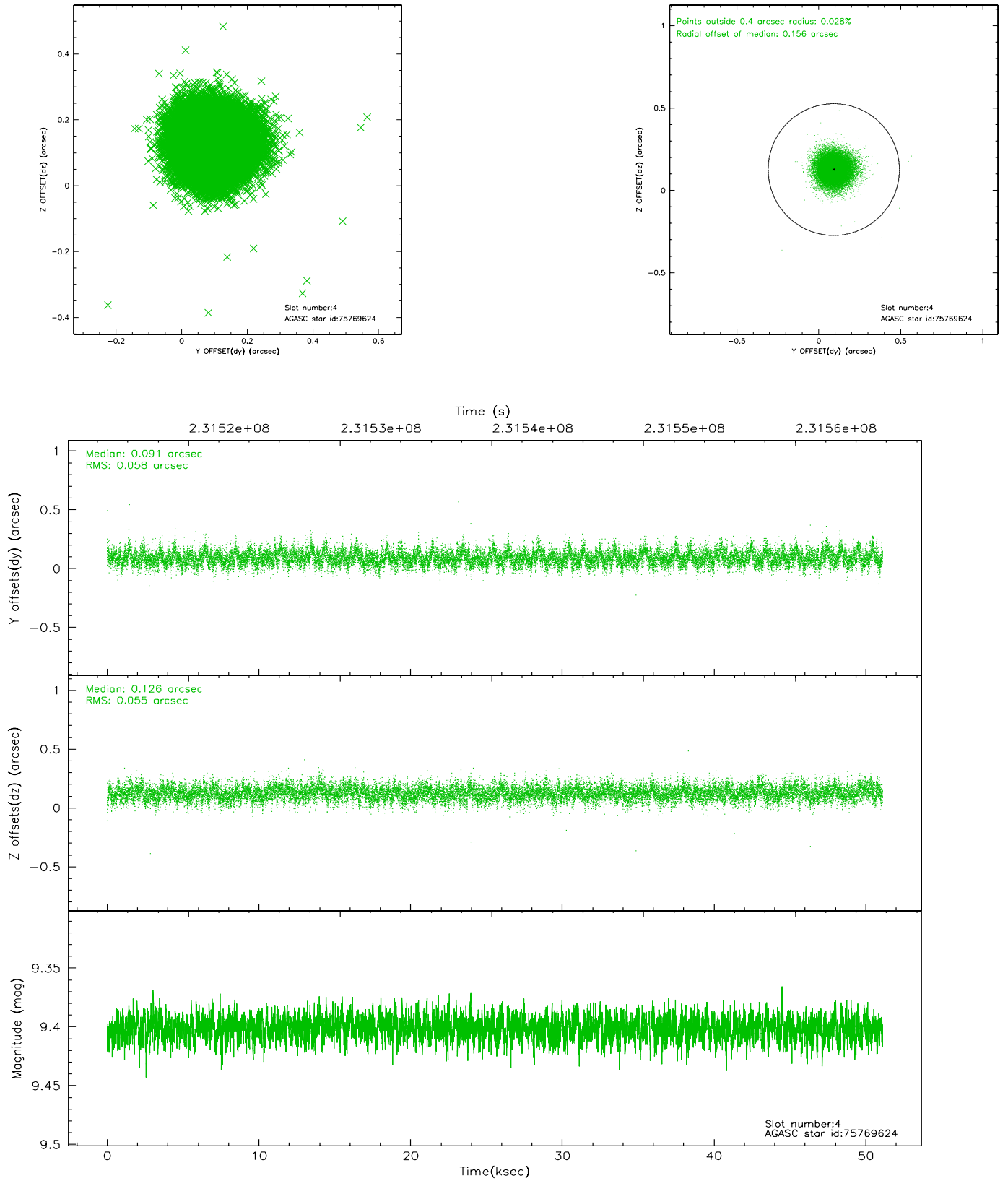
slot	status	id	mag	n_pts	med_dy	med_dz	dr1	dr2	ra	dec	mean_y	mean_z
0	FID	ACIS-S-2	7.10	12471	-0.009	-0.002	0.011	0.027	0.000000	0.000000	-760.20	-1733.13
1	FID	ACIS-S-4	7.20	12470	0.033	0.006	0.014	0.023	0.000000	0.000000	2153.13	175.39
2	FID	ACIS-S-5	7.23	12471	-0.055	0.006	0.014	0.022	0.000000	0.000000	-1813.12	169.02
3	GUIDE	75634760	9.00	24932	-0.030	0.044	0.095	0.145	349.528153	0.494791	-186.18	498.04
4	GUIDE	75769624	9.40	24920	0.091	0.126	0.085	0.138	350.180830	0.159527	-2108.27	-1313.69
5	GUIDE	687220280	9.36	24924	0.130	0.035	0.082	0.133	349.573474	-0.035729	-2040.85	981.96
6	GUIDE	75636968	9.29	24920	0.043	-0.055	0.124	0.202	349.584767	0.524969	-151.83	269.52
7	GUIDE	75633944	9.62	24906	-0.239	-0.149	0.112	0.182	348.993380	0.669916	1050.86	2101.72

2.4 Star Slots

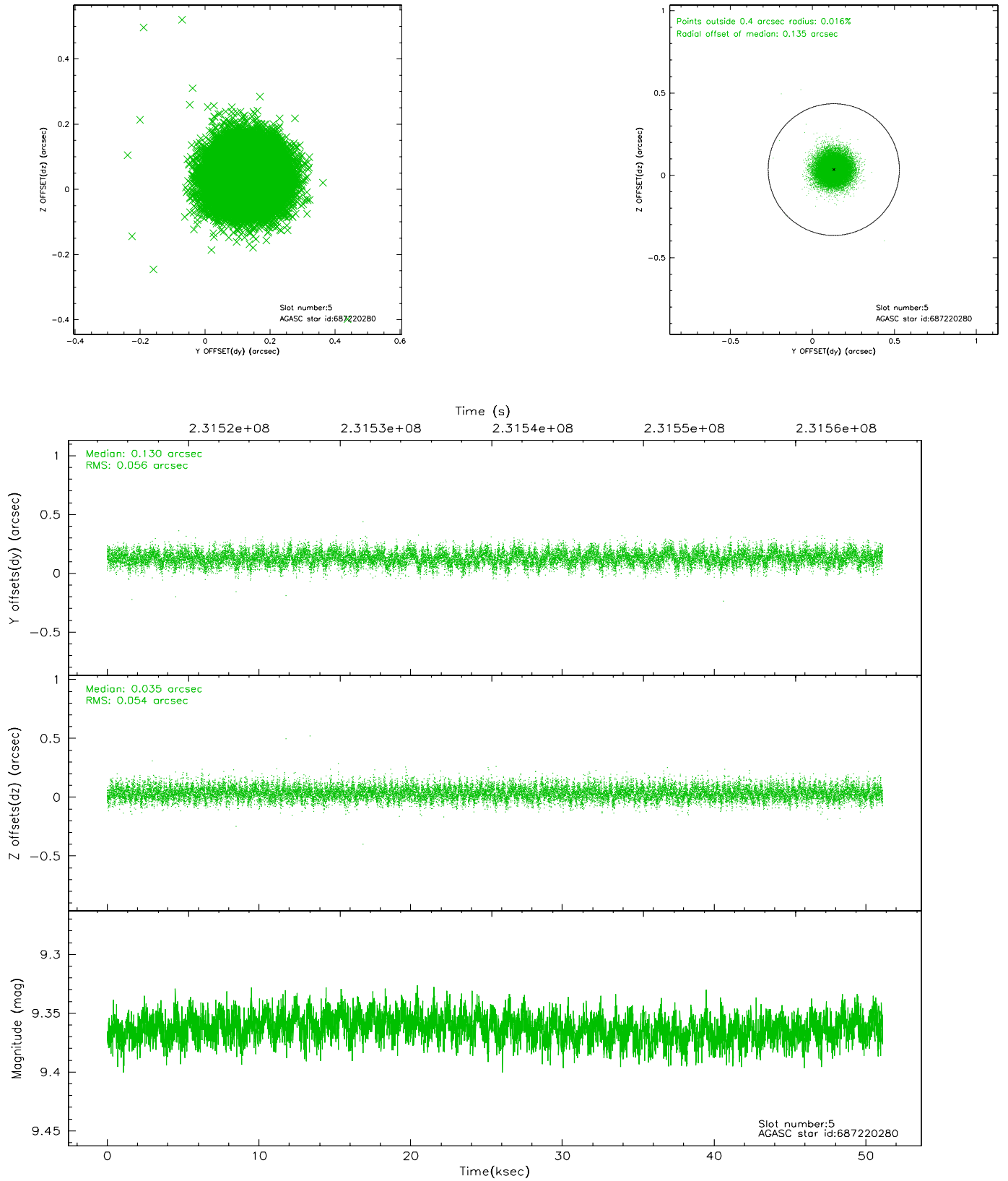
2.4.1 Slot 3



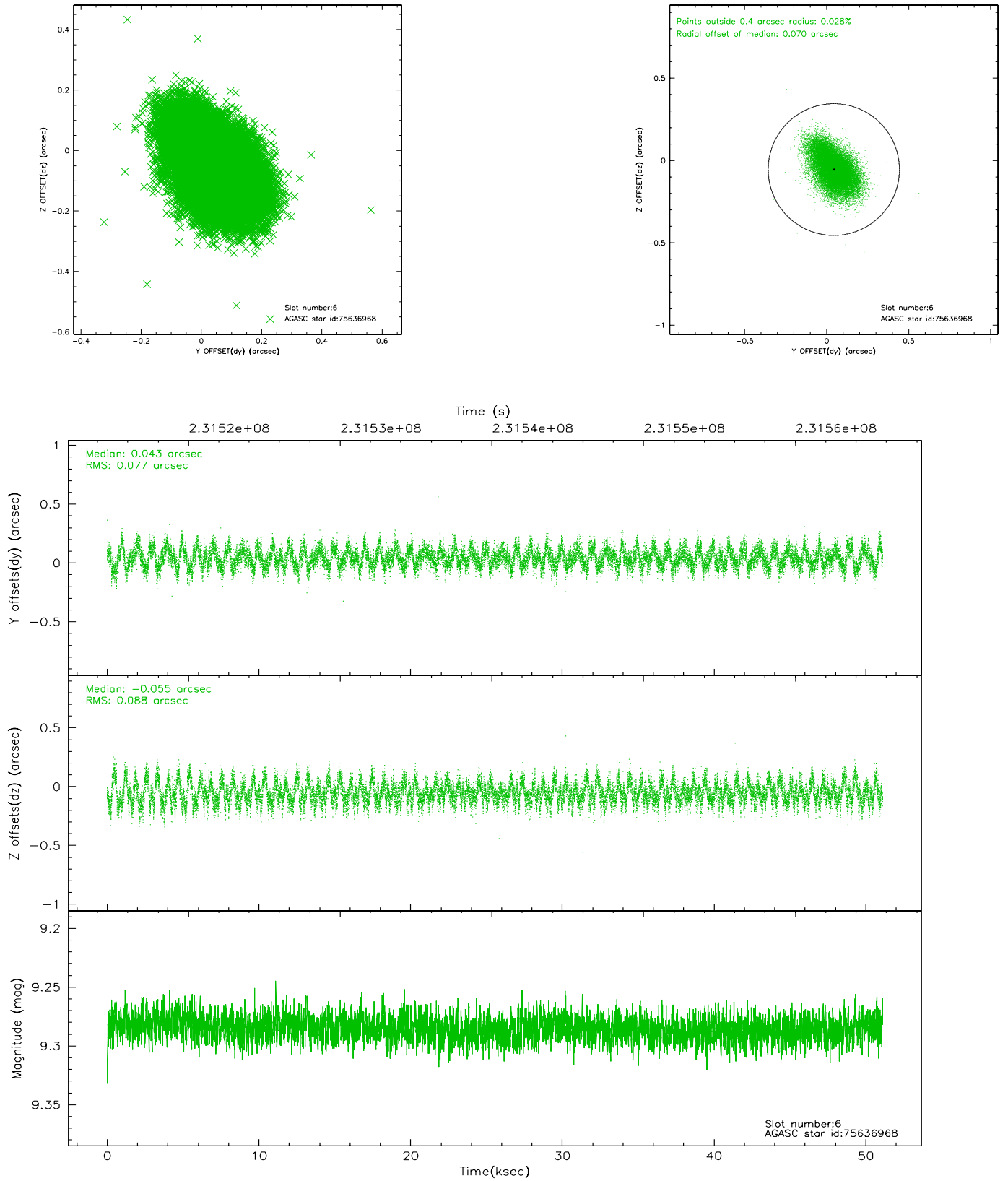
2.4.2 Slot 4



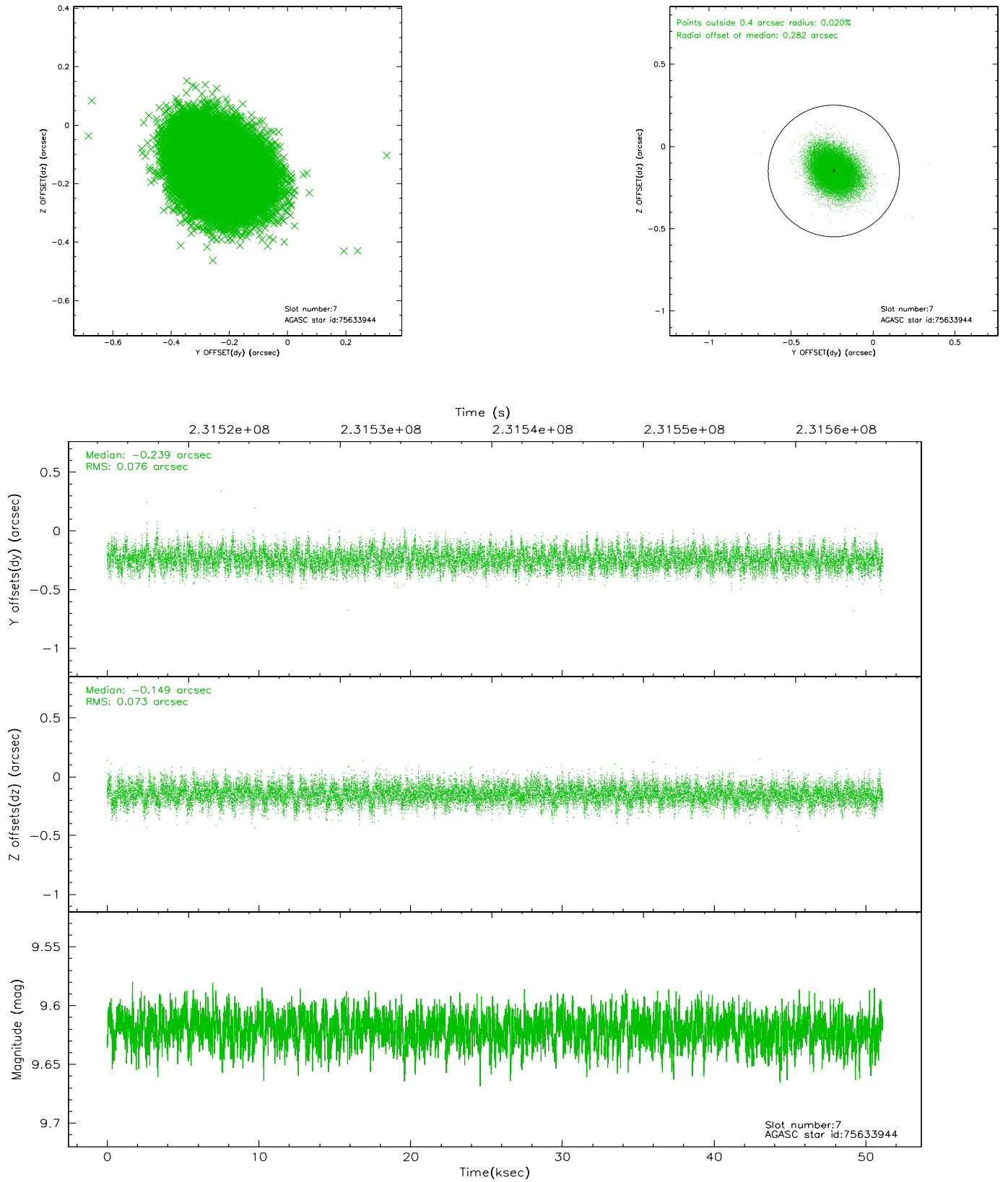
2.4.3 Slot 5



2.4.4 Slot 6

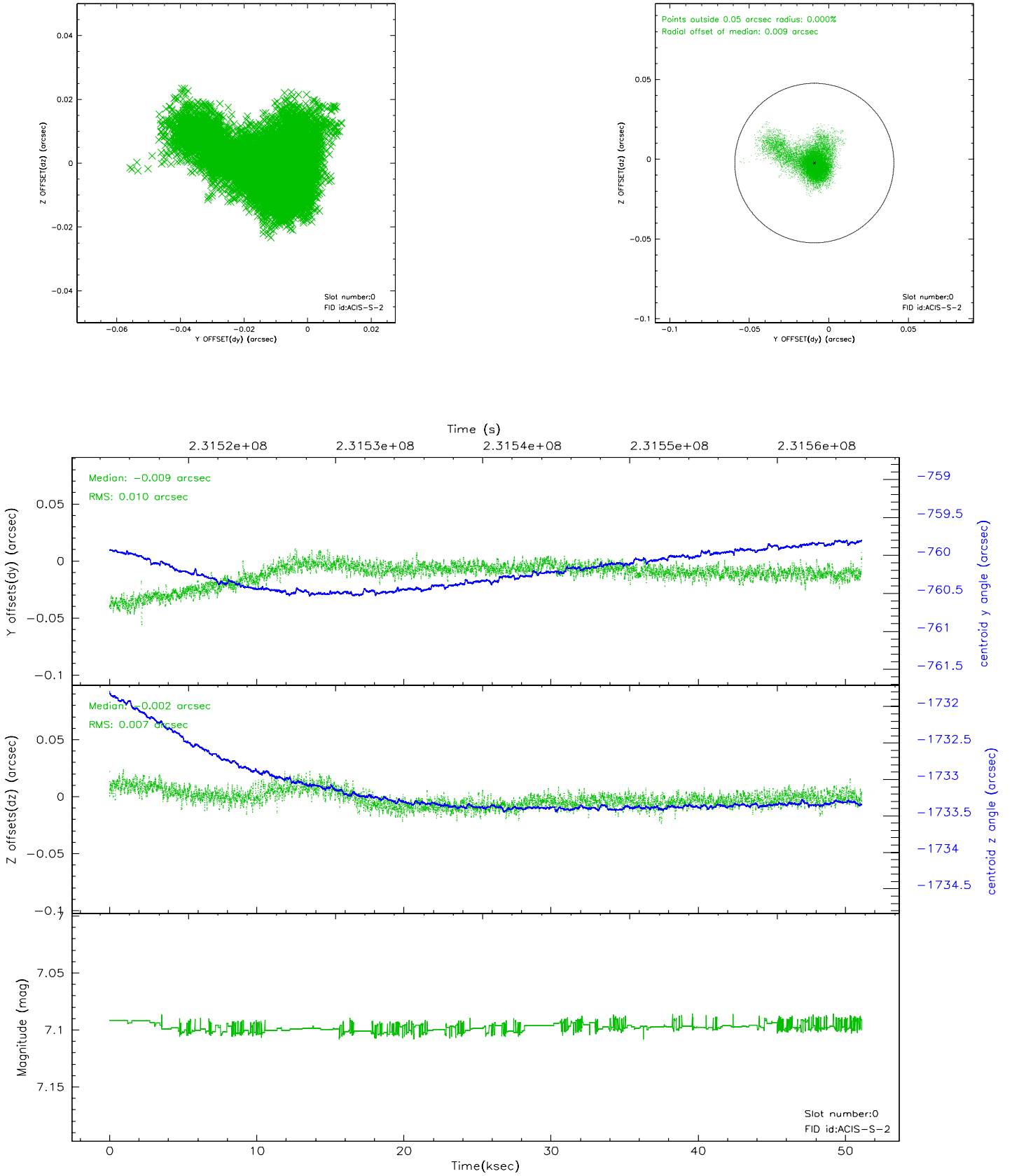


2.4.5 Slot 7

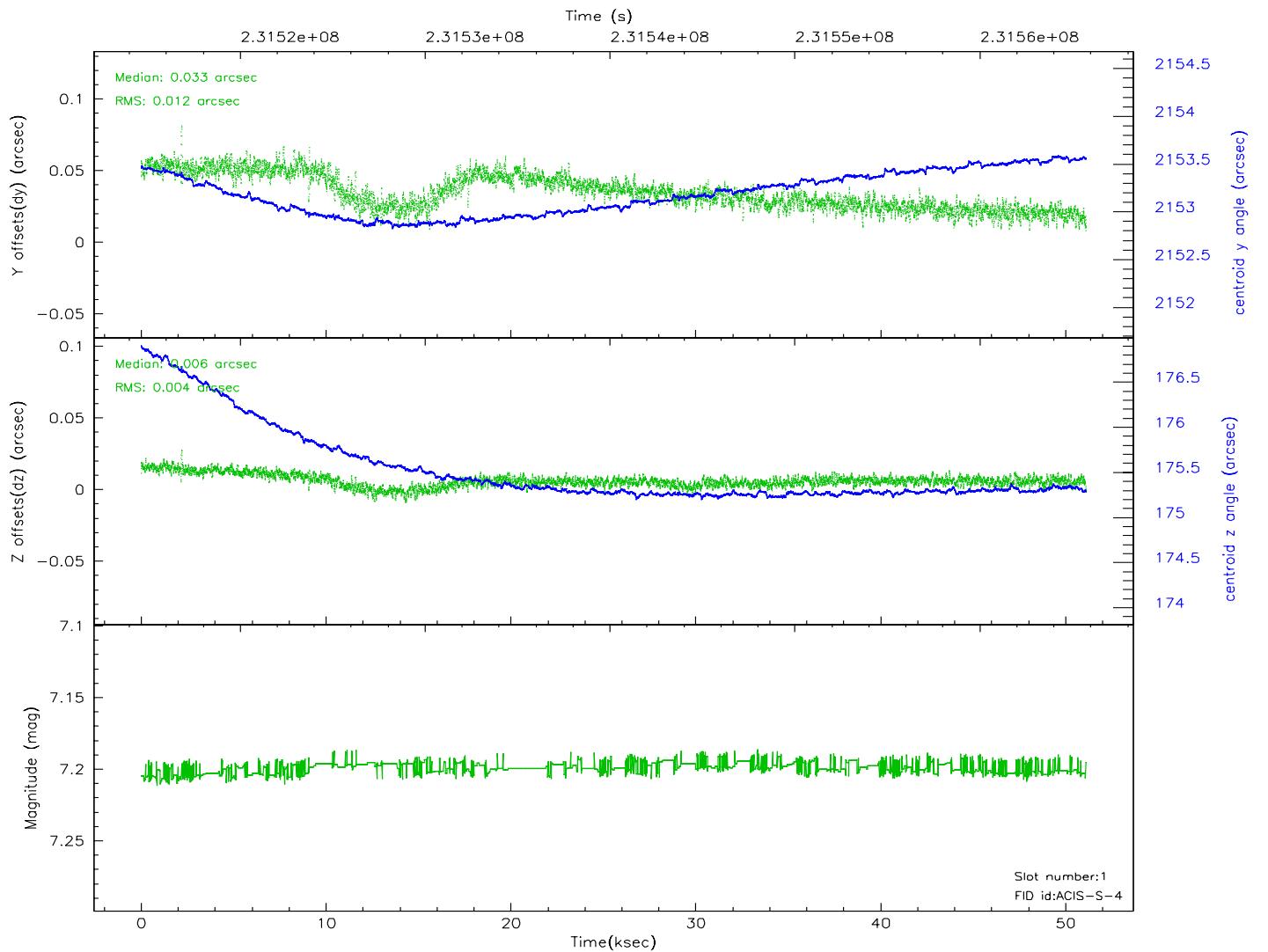
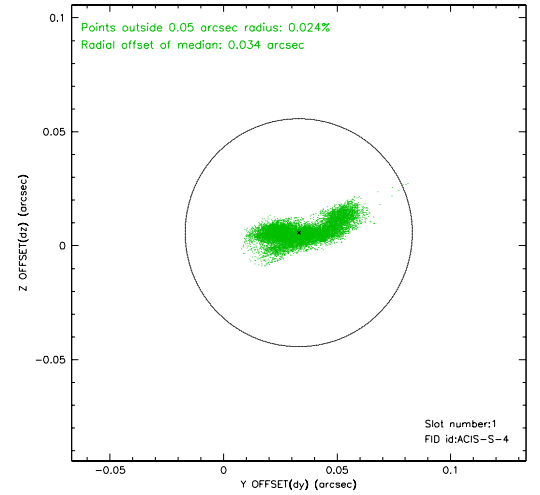
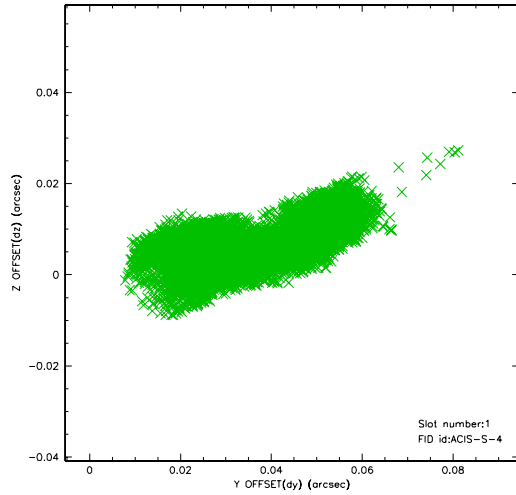


2.5 FID Slots

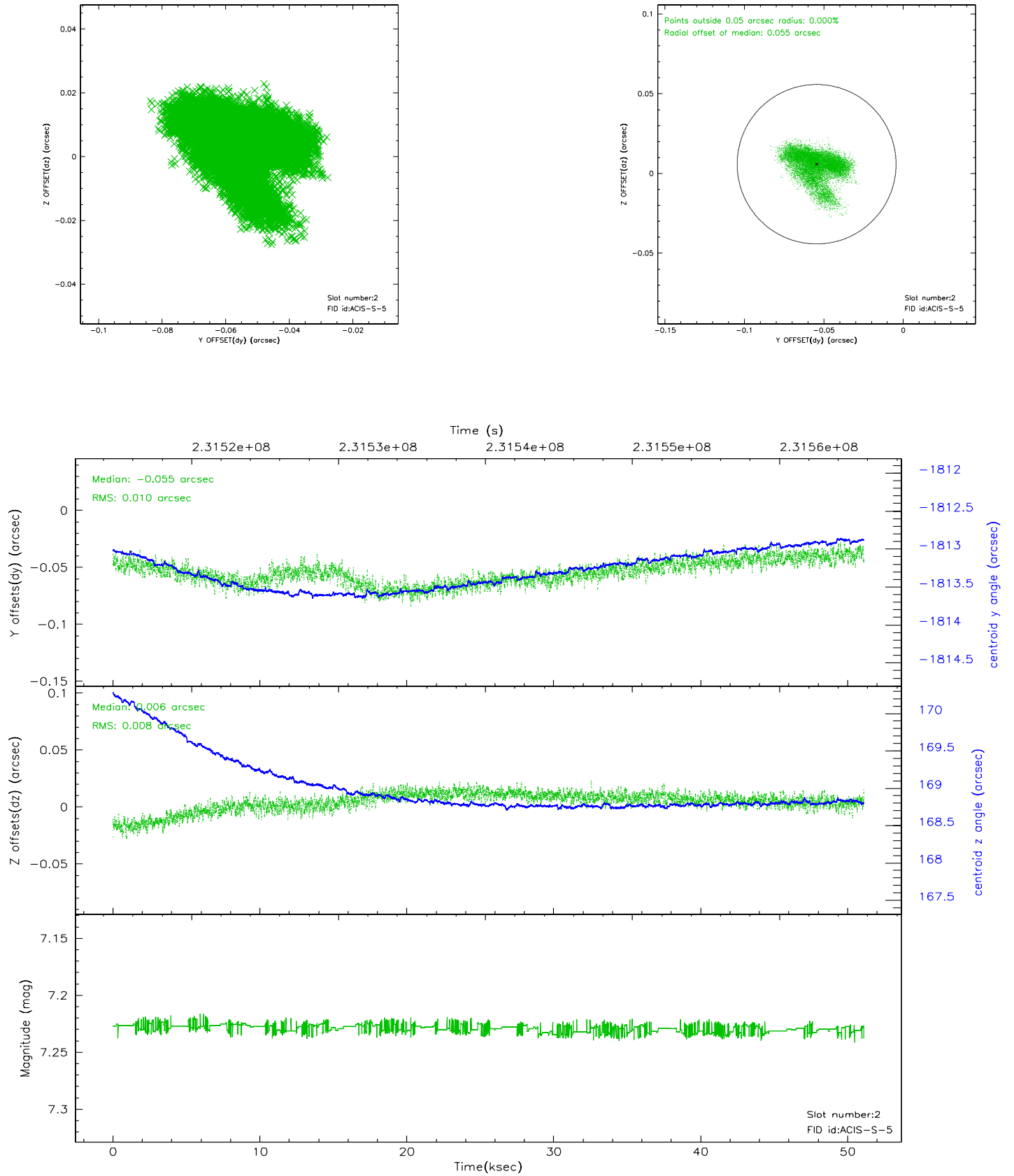
2.5.1 Slot 0



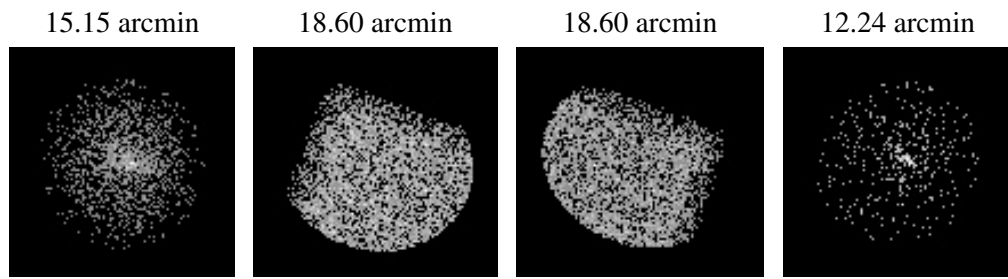
2.5.2 Slot 1



2.5.3 Slot 2



3 Point Sources



A Summary

A.1 Status

V&V Scientist	Beth Sundheim
V&V Date (YYYY-MM-DD)	2006.03.03
V&V Edition	1
V&V Disposition and Status	OK
V&V Charge Time	51.12209

A.2 Comments