

V&V Reference Report

L2 ASCDS Version : 7.6.7.2

Observation 4748 - L2 Version 001
Chandra X-Ray Center

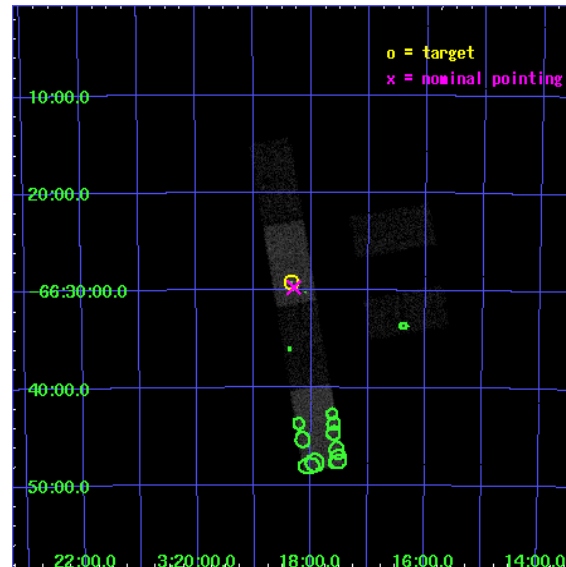
L2 Processing Date : Jun 2 2006

Contents

1	Front	2
2	OBI	3
2.1	OBI	3
2.1.1	Images	3
2.1.2	Bias	3
2.1.3	Parameters	4
2.1.4	Events	4
2.2	Compared Parameters	5
2.3	Aspect	6
2.4	Star Slots	9
2.4.1	Slot 3	9
2.4.2	Slot 4	10
2.4.3	Slot 5	11
2.4.4	Slot 6	12
2.4.5	Slot 7	13
2.5	FID Slots	14
2.5.1	Slot 0	14
2.5.2	Slot 1	15
2.5.3	Slot 2	16
3	Point Sources	17
A	Summary	18
A.1	Status	18
A.2	Comments	18

1 Front

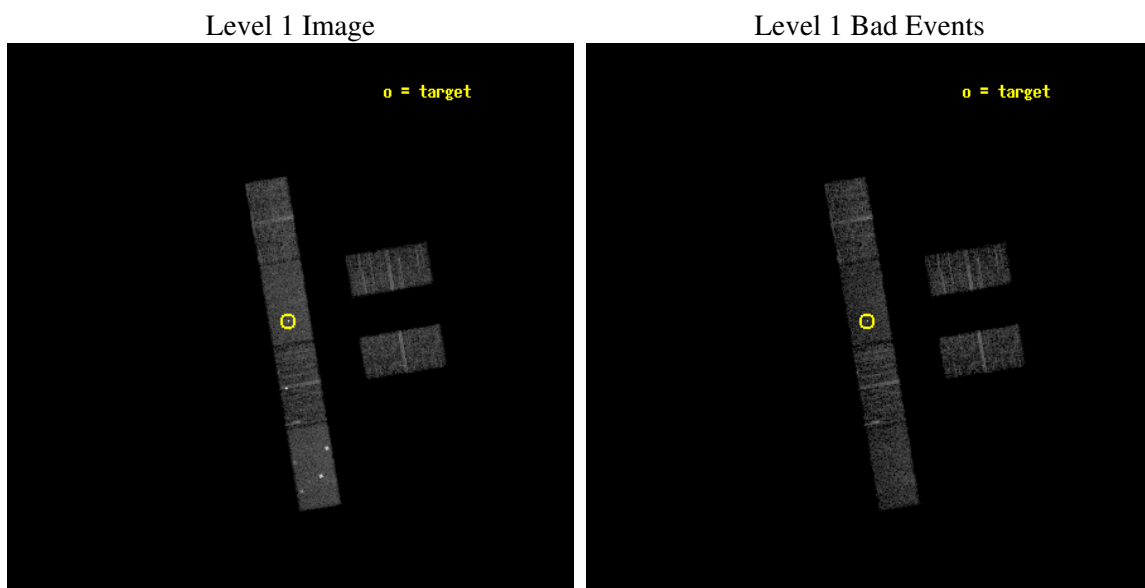
seq_num	600403
obs_id	4748
title	Observations of Intermediate Mass Black Hole Candidate Ultra-Luminous X-ray Sources
observer	Dr Jon Miller
object	NGC 1313 X-1 Obs 2
dtcycle	0
cycle	P
ra_targ	49.583333
dec_targ	-66.486389
ra_nom	49.575043100738
dec_nom	-66.495389313886
roll_nom	260.43100687979
revision	2
ontime	5166.0000342131
livetime	5050.840862547
ontime2	5166.0000342131
ontime3	5166.0000342131
ontime5	5166.0000342131
ontime6	5166.0000342131
ontime7	5166.0000342131
ontime8	5166.0000342131
l2events	31240



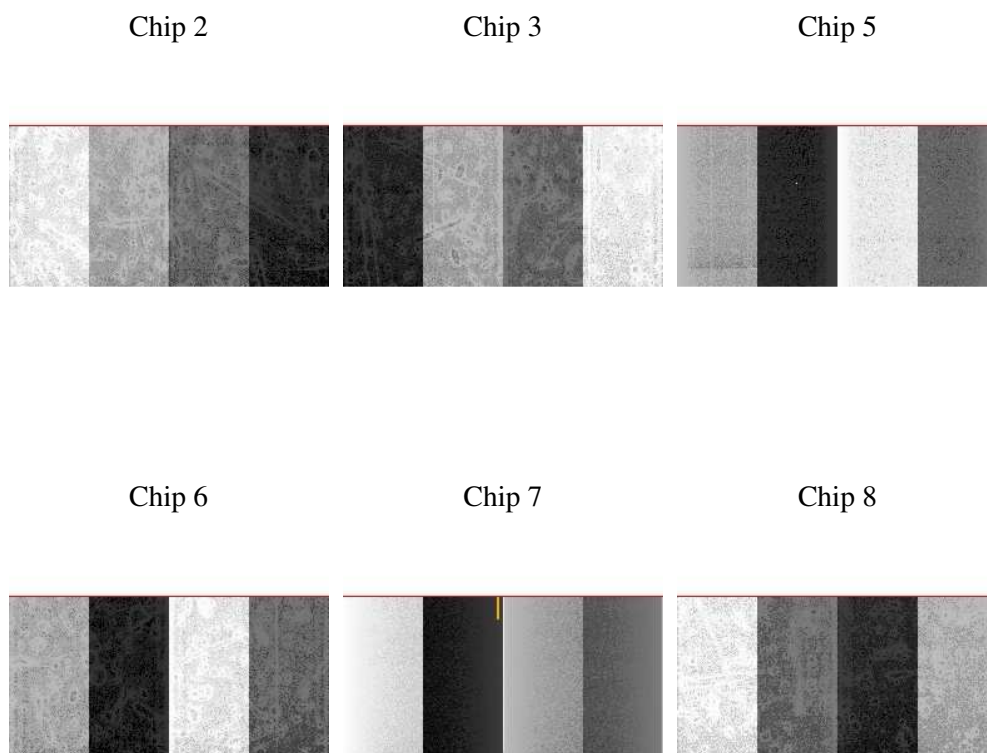
2 OBI

2.1 OBI

2.1.1 Images



2.1.2 Bias



2.1.3 Parameters

obi_num	1
ascdsver	7.6.7.2
caldsver	3.2.2
date	2006-06-02T17:24:43
revision	2

sched_exp_time	5000.000000
ontime	5570.9294538796
ontime2	5570.9294239581
ontime3	5570.9294239581
ontime5	5570.9294538796
ontime6	5570.9294239581
ontime7	5570.9294538796
ontime8	5570.9294239581
l1events	151341

2.1.4 Events

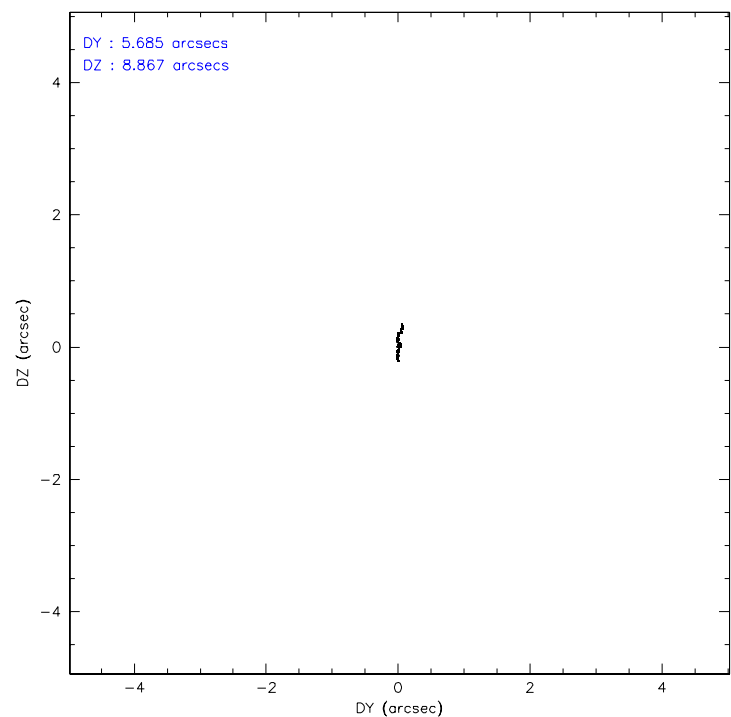
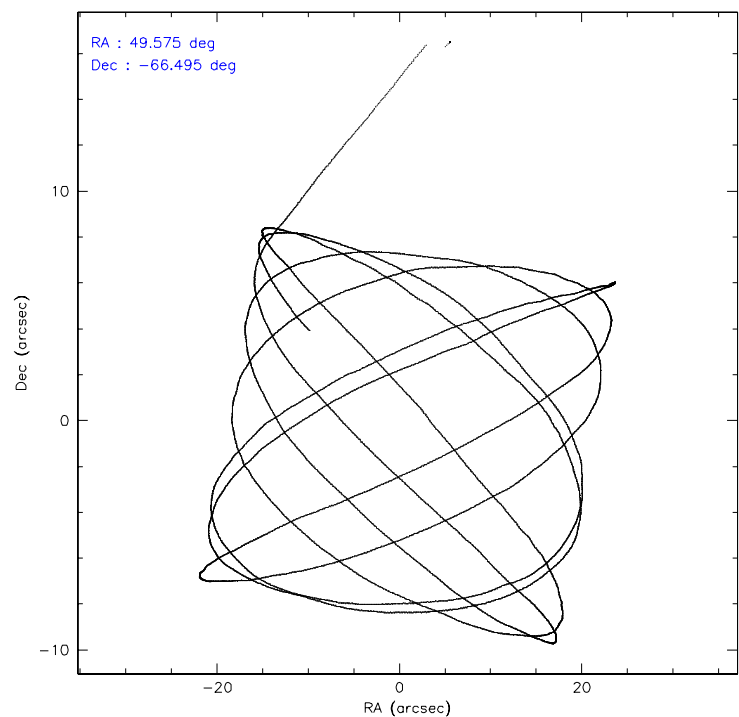
	ccd 2	ccd 3	ccd 5	ccd 6	ccd 7	ccd 8
level 1 events	20442	20385	33392	22582	28928	25612
rejected events	18237	18274	17390	19001	17277	20761
rejected %	89%	89%	52%	84%	59%	81%

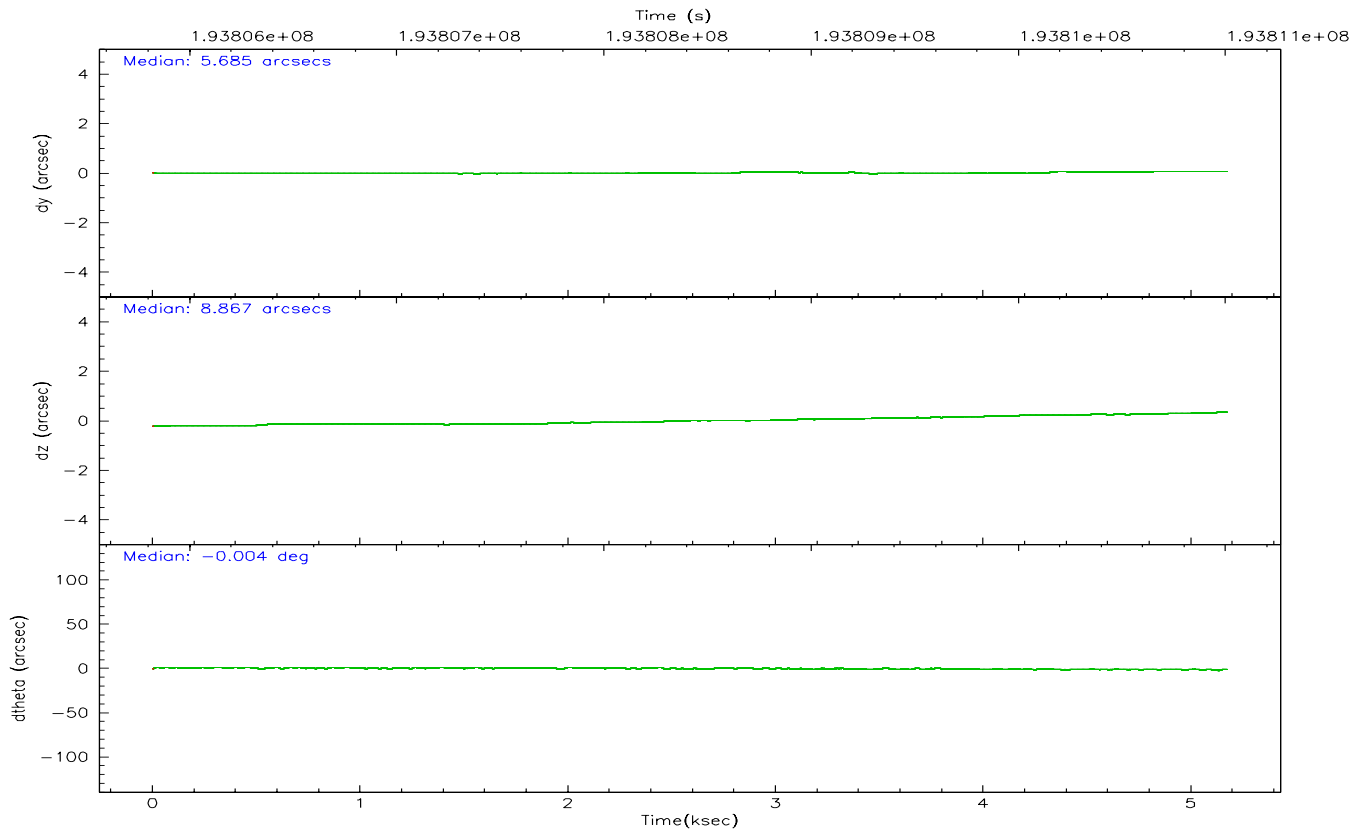
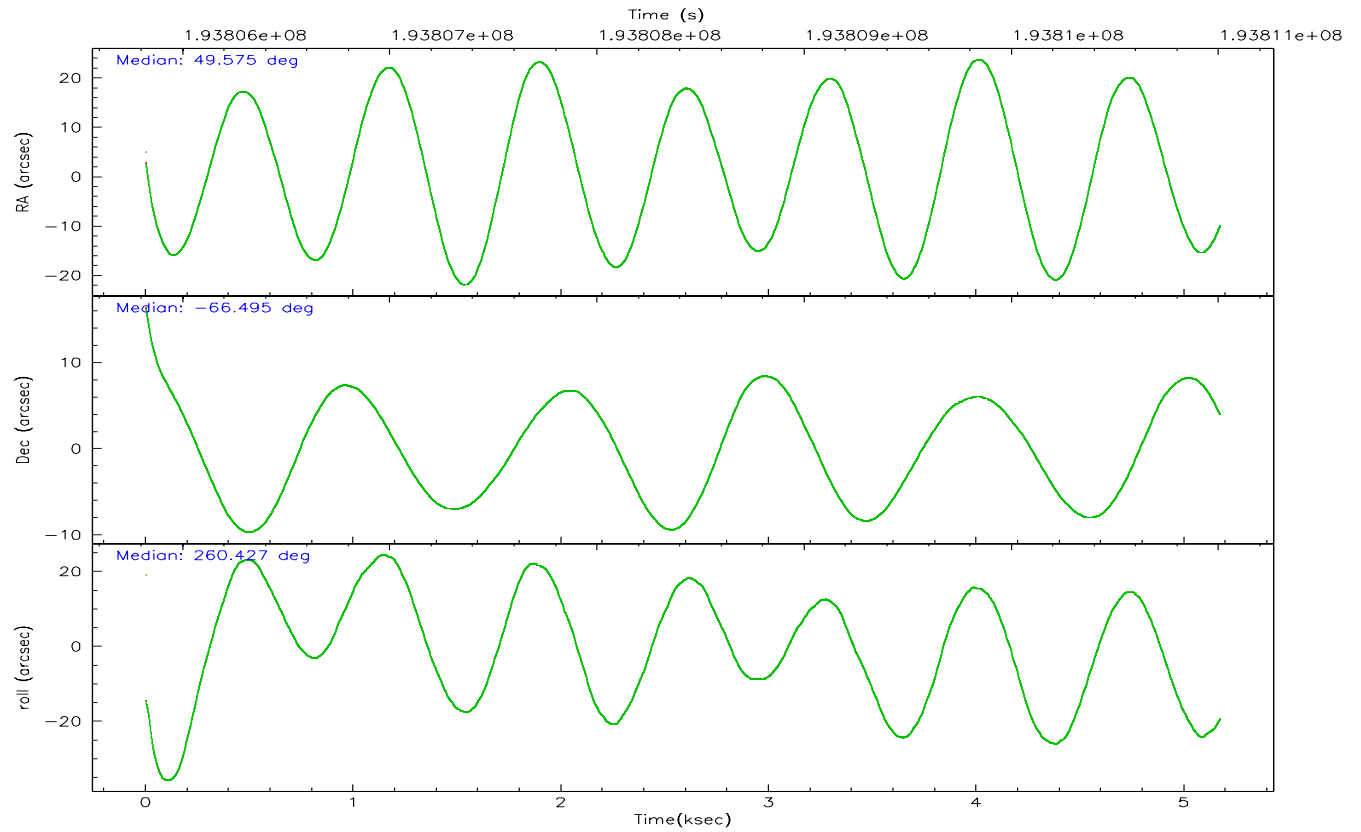
	ccd 2	ccd 3	ccd 5	ccd 6	ccd 7	ccd 8
grade 0 events	1012	1017	5462	2005	1194	1596
	4%	4%	16%	8%	4%	6%
grade 1 events	13	5	29	15	51	12
	0%	0%	0%	0%	0%	0%
grade 2 events	456	402	4018	665	3163	1074
	2%	1%	12%	2%	10%	4%
grade 3 events	274	251	369	299	868	616
	1%	1%	1%	1%	3%	2%
grade 4 events	269	251	293	312	791	556
	1%	1%	0%	1%	2%	2%
grade 5 events	796	811	1445	854	1996	1112
	3%	3%	4%	3%	6%	4%
grade 6 events	381	390	7136	504	6468	1371
	1%	1%	21%	2%	22%	5%
grade 7 events	17241	17258	14640	17928	14397	19275
	84%	84%	43%	79%	49%	75%

2.2 Compared Parameters

Parameter	Planned	Actual	Parameter	Planned	Actual
Instrument	ACIS	ACIS	Obspar format version number	6	6
Detector	ACIS-235678	ACIS-235678	Obspar file type	PREDICTED	ACTUAL
Grating	NONE	NONE	Obspar update status	NONE	UPDATED
Data mode	FAINT	FAINT	On-chip summing requested	N	N
Observation mode	POINTING	POINTING	Subarray requested	1/2	1/2
Pointing RA	49.550495	49.57504310073794	Subarray start row	0	257
Pointing Dec	-66.470097	-66.49538931388579	Subarray row count	1024	512
Pointing Roll	260.251853	260.4310068797898	Alternating exposures requested	N	N
SIM focus pos (mm)	-0.684267	-0.6828225247311905	Primary exposure time	0.000000	1.8
SIM defocus (mm)	0	0.001444936568705701			
SIM translation stage pos (mm)	-190.132523	-190.1400660498719			
SIM translation stage offset (mm)	0	0.00754346686406393			
Observation start time	193806000.184000	193804955.80699			
Observation start date	2004-02-22T02:58:56	2004-02-22T02:42:35			
Observation end time	193811000.184000	193811133.99476			
Observation end date	2004-02-22T04:22:16	2004-02-22T04:25:33			
Read mode	TIMED	TIMED			

2.3 Aspect



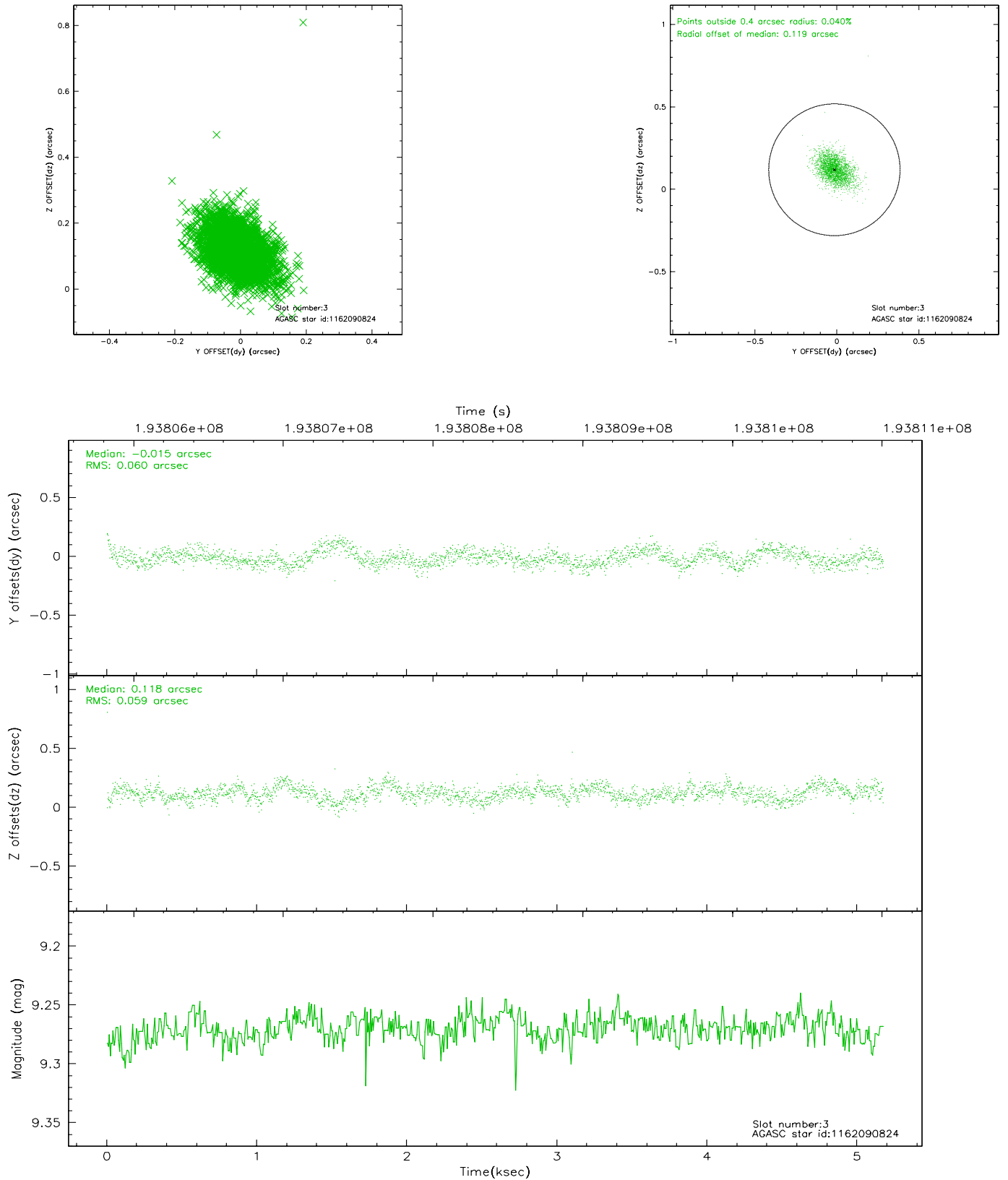


Slot Statistics

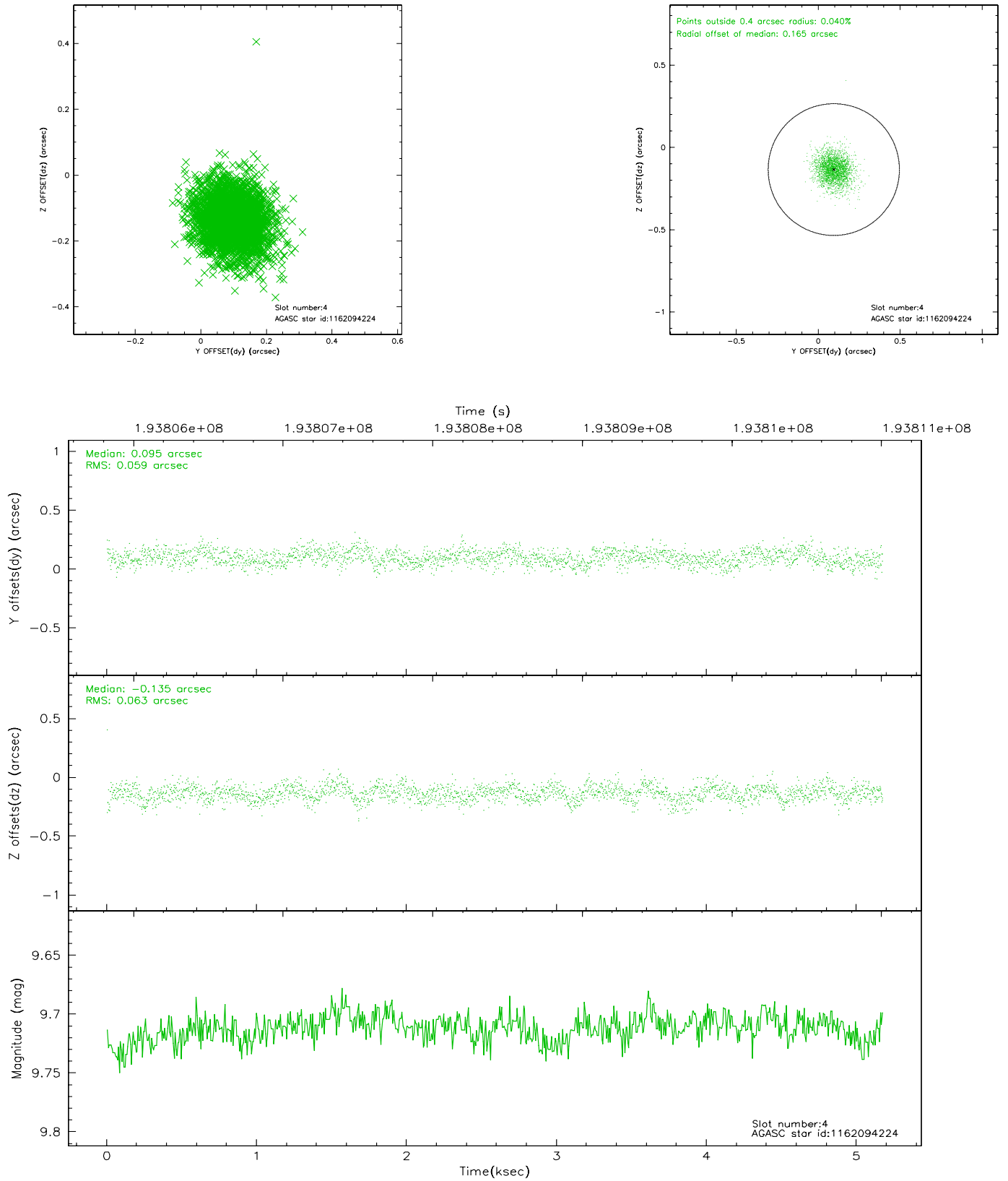
slot	status	id	mag	n_pts	med_dy	med_dz	dr1	dr2	ra	dec	mean_y	mean_z
0	FID	ACIS-S-2	7.10	1262	-0.034	-0.018	0.008	0.013	0.000000	0.000000	-758.46	-1730.11
1	FID	ACIS-S-4	7.21	1261	0.041	0.021	0.005	0.009	0.000000	0.000000	2154.38	177.18
2	FID	ACIS-S-5	7.23	1262	-0.037	0.006	0.007	0.013	0.000000	0.000000	-1809.78	172.20
3	GUIDE	1162090824	9.27	2524	-0.015	0.118	0.087	0.147	48.677982	-66.885202	1690.76	-960.19
4	GUIDE	1162094224	9.71	2523	0.095	-0.135	0.091	0.149	49.638584	-66.701903	802.67	264.84
5	GUIDE	1162095544	10.21	2523	0.052	-0.119	0.149	0.281	48.846024	-66.171463	-879.40	-1190.51
6	GUIDE	1162085688	10.19	2517	-0.043	0.166	0.144	0.240	49.879892	-65.844121	-2301.67	96.81
7	GUIDE	1162094168	10.54	2512	-0.080	-0.038	0.210	0.332	51.114459	-66.792352	794.56	2387.98

2.4 Star Slots

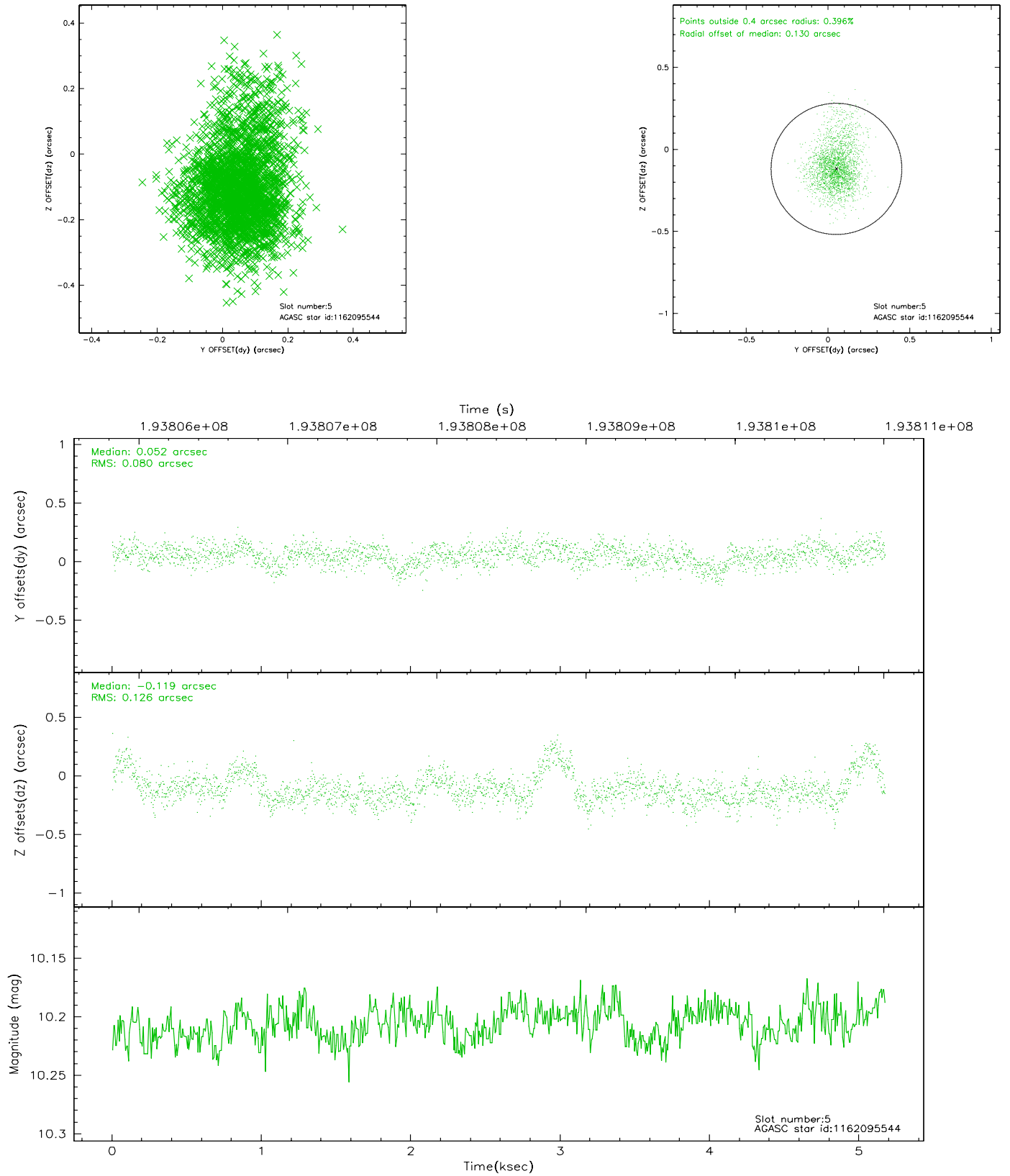
2.4.1 Slot 3



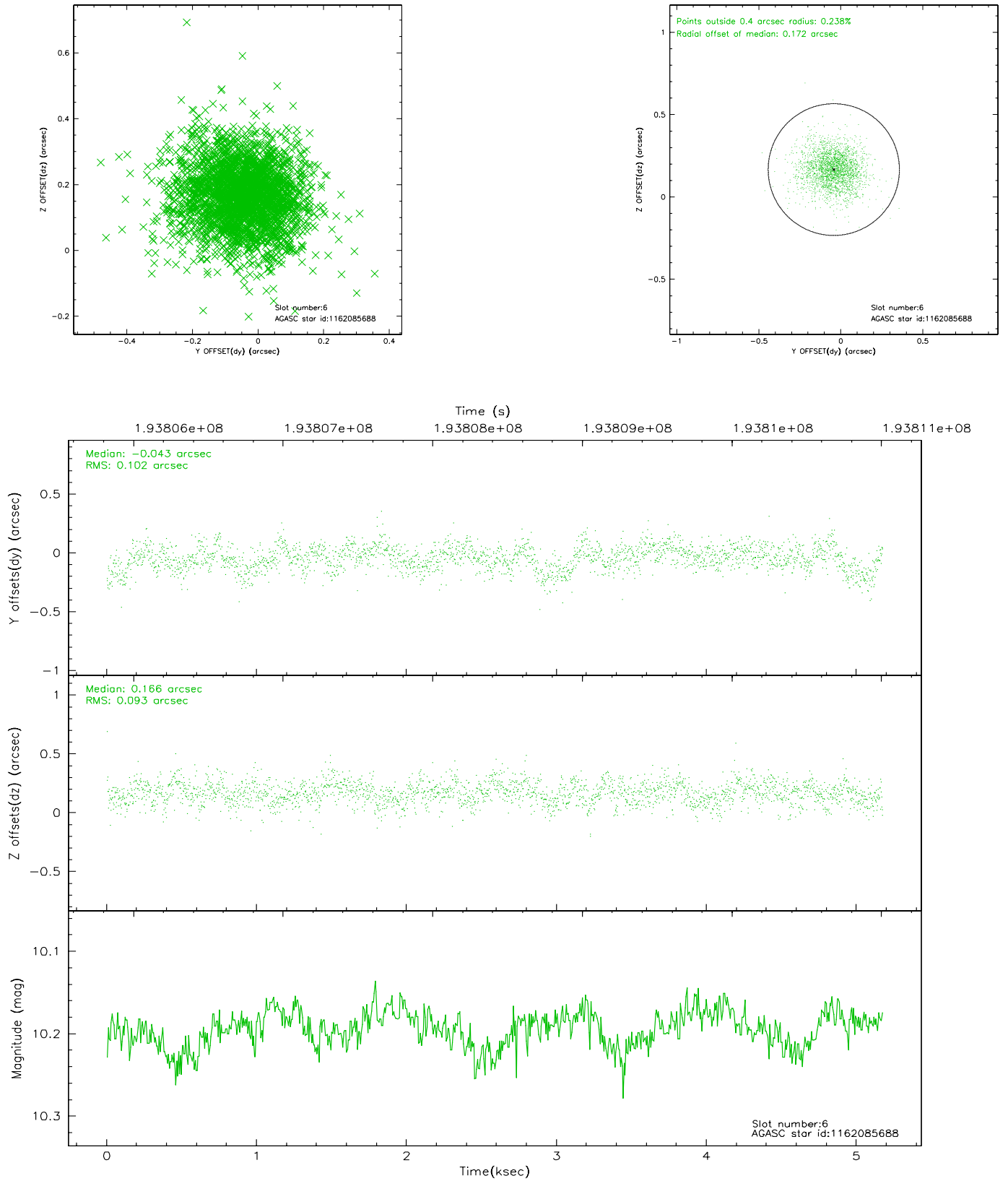
2.4.2 Slot 4



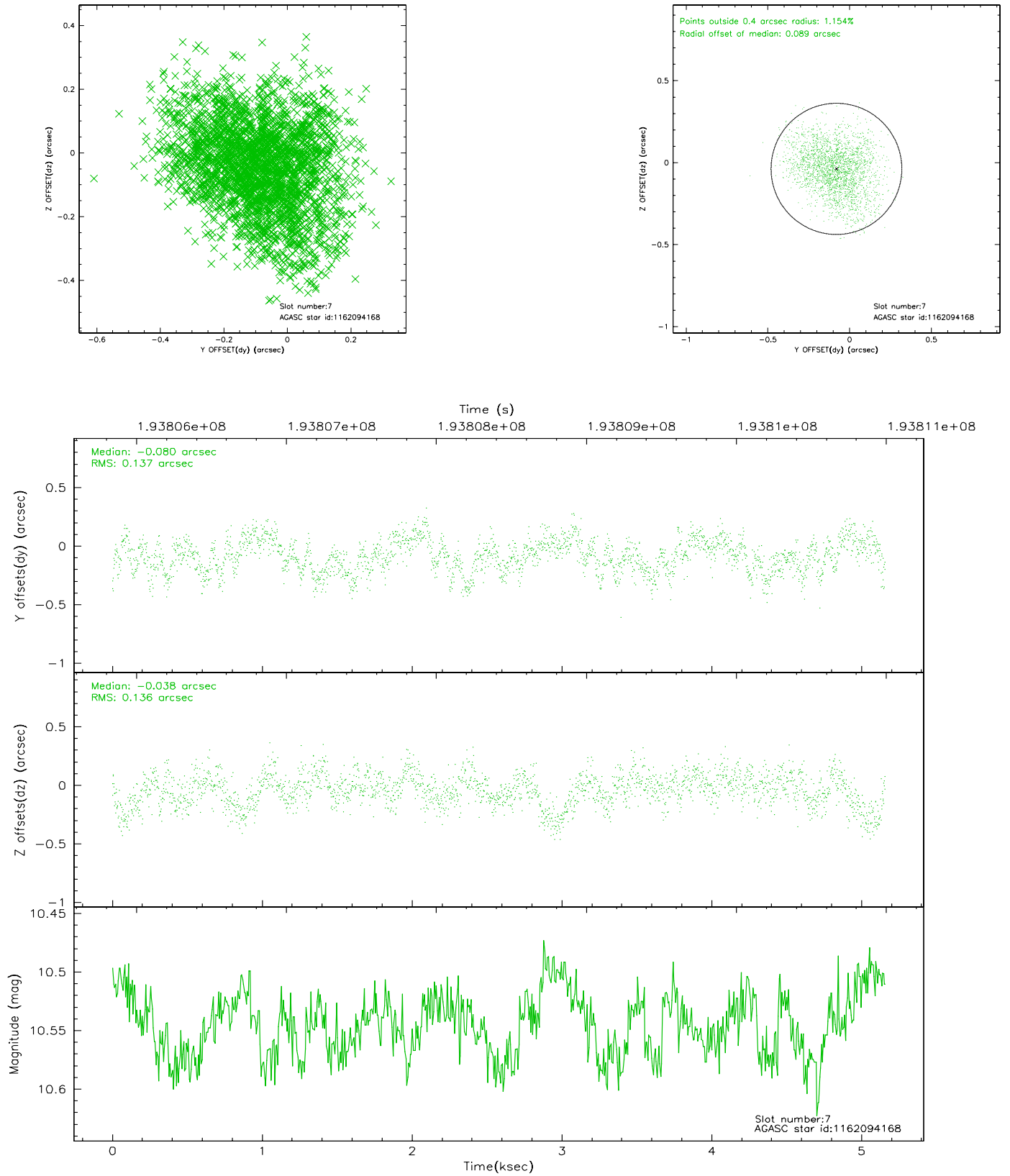
2.4.3 Slot 5



2.4.4 Slot 6

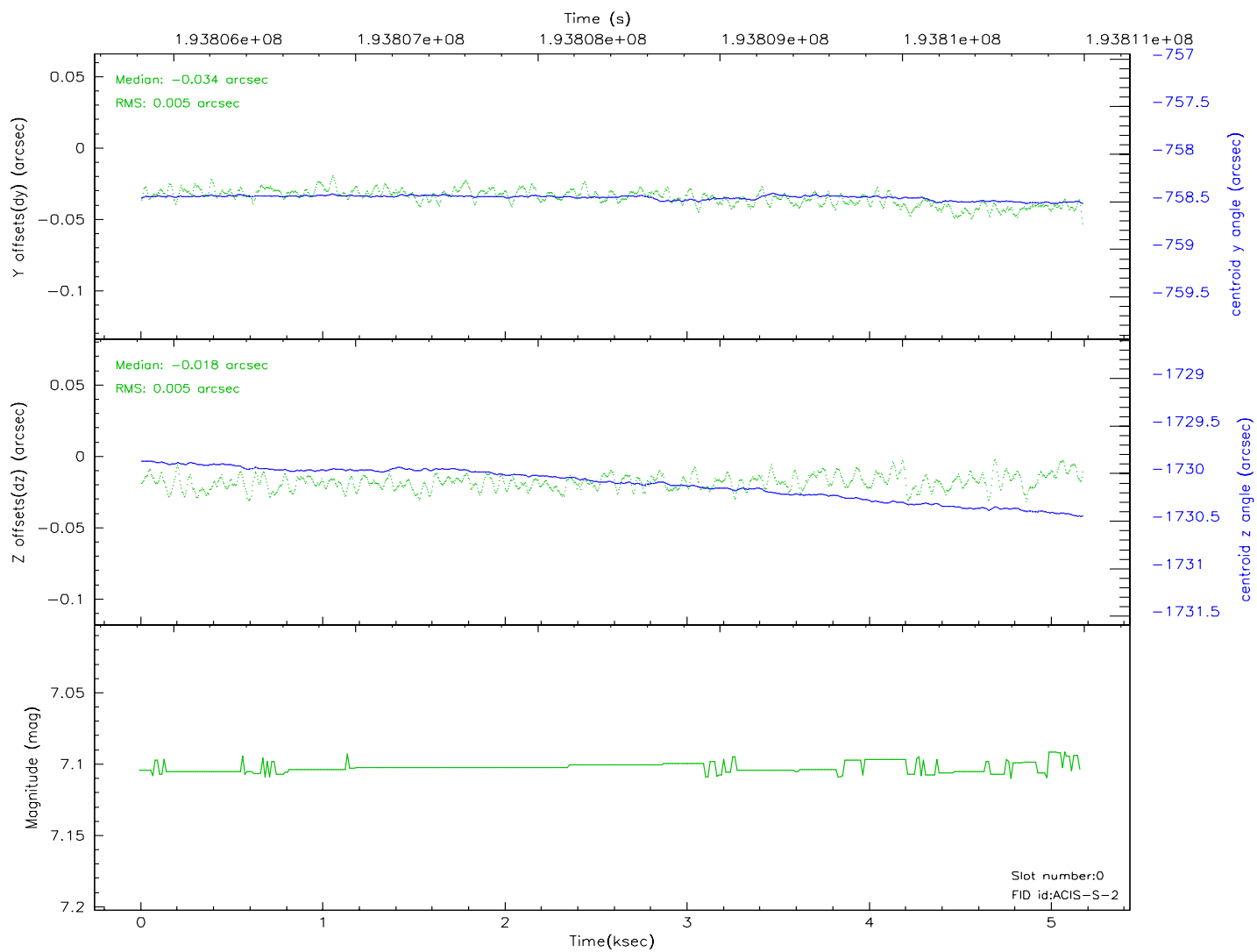
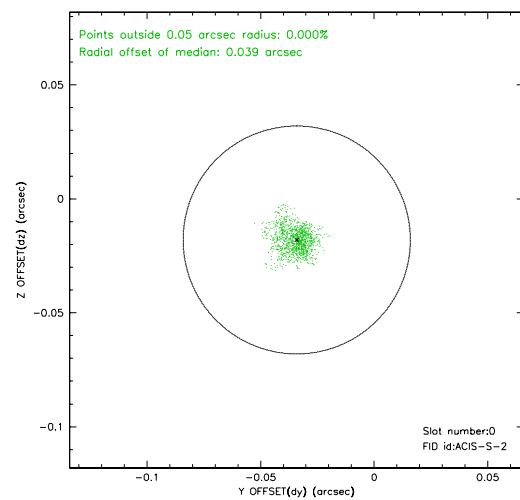
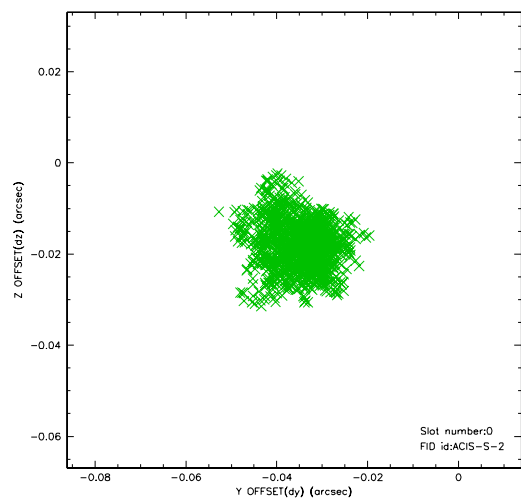


2.4.5 Slot 7

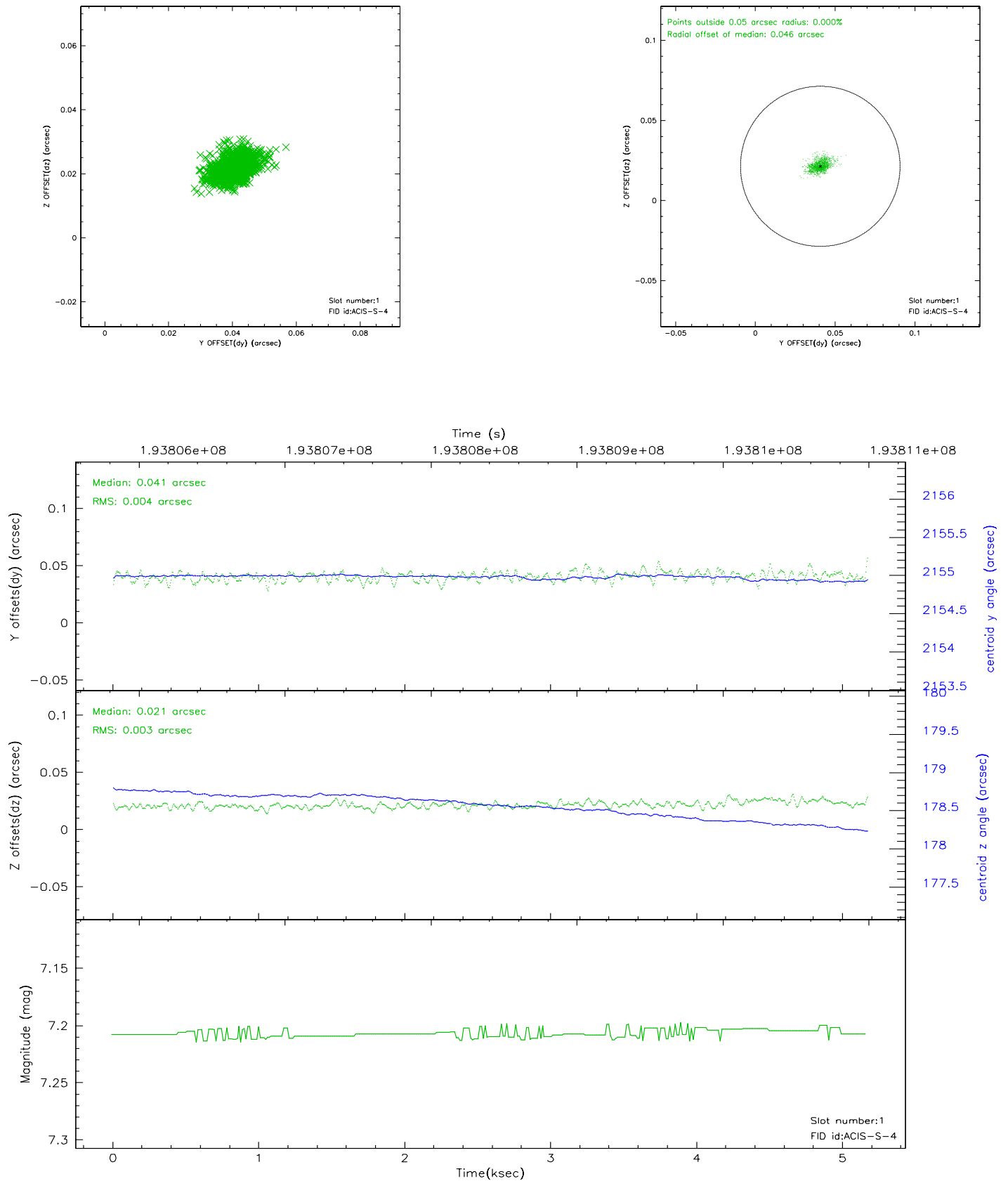


2.5 FID Slots

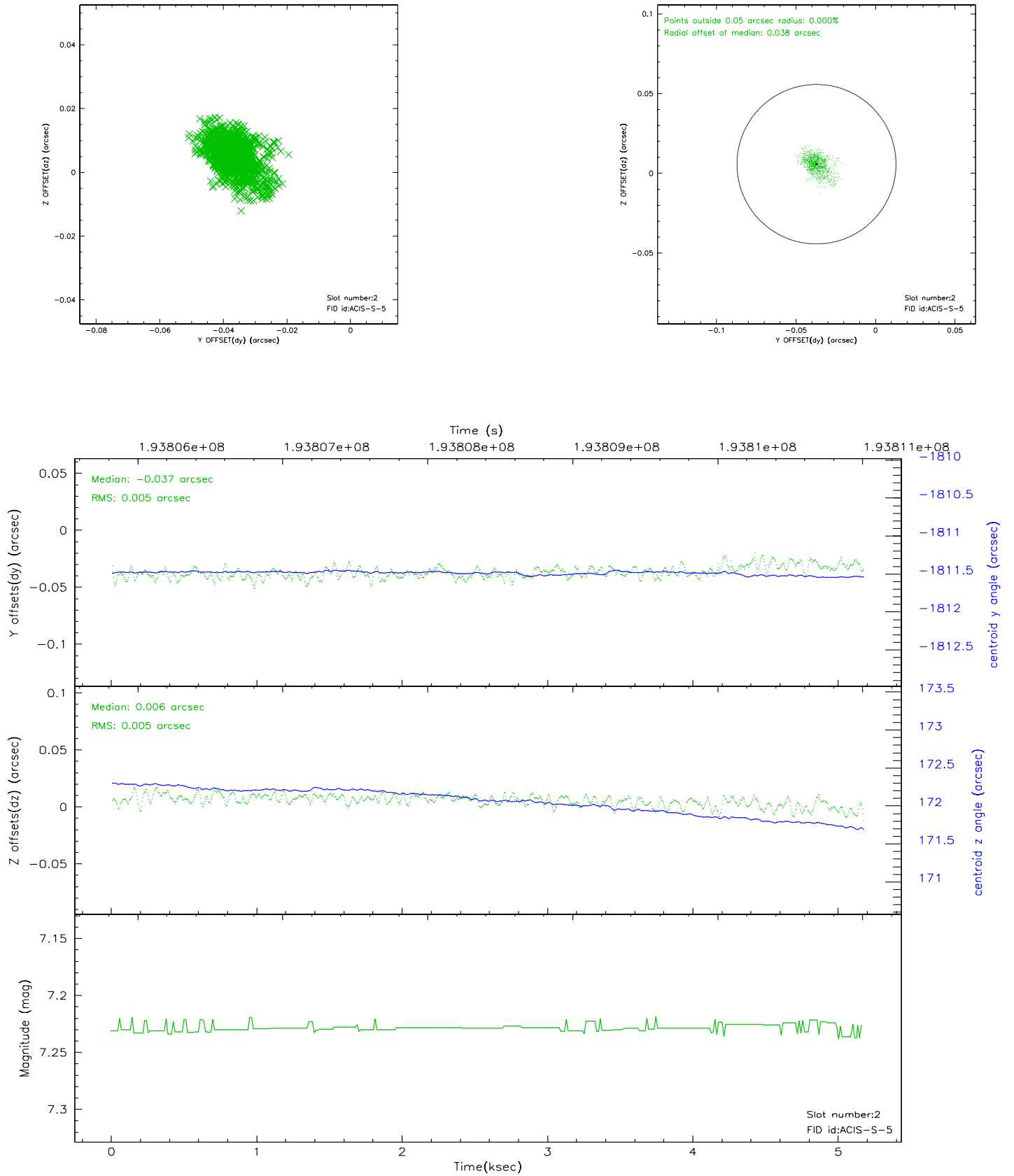
2.5.1 Slot 0



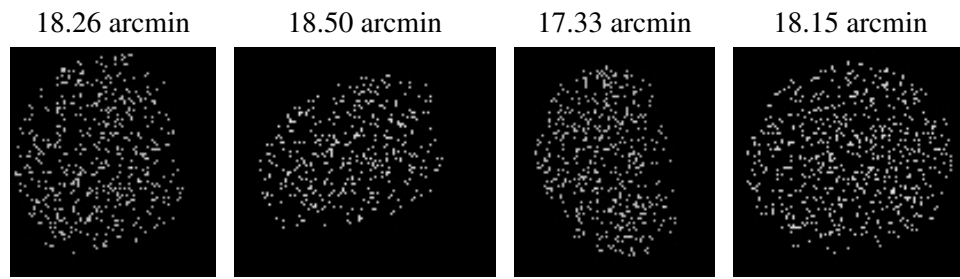
2.5.2 Slot 1



2.5.3 Slot 2



3 Point Sources



A Summary

A.1 Status

V&V Scientist	Jen Lauer
V&V Date (YYYY-MM-DD)	2006.06.04
V&V Edition	1
V&V Disposition and Status	OK
V&V Charge Time	5.166

A.2 Comments

Window preference met.