

# V&V Reference Report

## L2 ASCDS Version : 8.5

Observation 4708 - L2 Version 3  
Chandra X-Ray Center

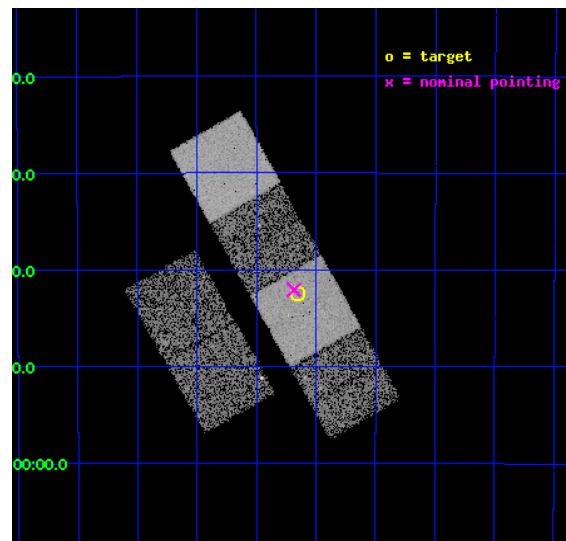
L2 Processing Date : Dec 8 2012

## Contents

<b>1</b>	<b>Front</b>	<b>2</b>
<b>2</b>	<b>OBI</b>	<b>3</b>
2.1	OBI . . . . .	3
2.1.1	Images . . . . .	3
2.1.2	Bias . . . . .	3
2.1.3	Parameters . . . . .	4
2.1.4	Events . . . . .	4
2.2	Compared Parameters . . . . .	5
2.3	Aspect . . . . .	6
2.4	Star Slots . . . . .	9
2.4.1	Slot 3 . . . . .	9
2.4.2	Slot 4 . . . . .	10
2.4.3	Slot 5 . . . . .	11
2.4.4	Slot 6 . . . . .	12
2.4.5	Slot 7 . . . . .	13
2.5	FID Slots . . . . .	14
2.5.1	Slot 0 . . . . .	14
2.5.2	Slot 1 . . . . .	15
2.5.3	Slot 2 . . . . .	16
<b>A</b>	<b>Summary</b>	<b>17</b>
A.1	Status . . . . .	17
A.2	Comments . . . . .	17

# 1 Front

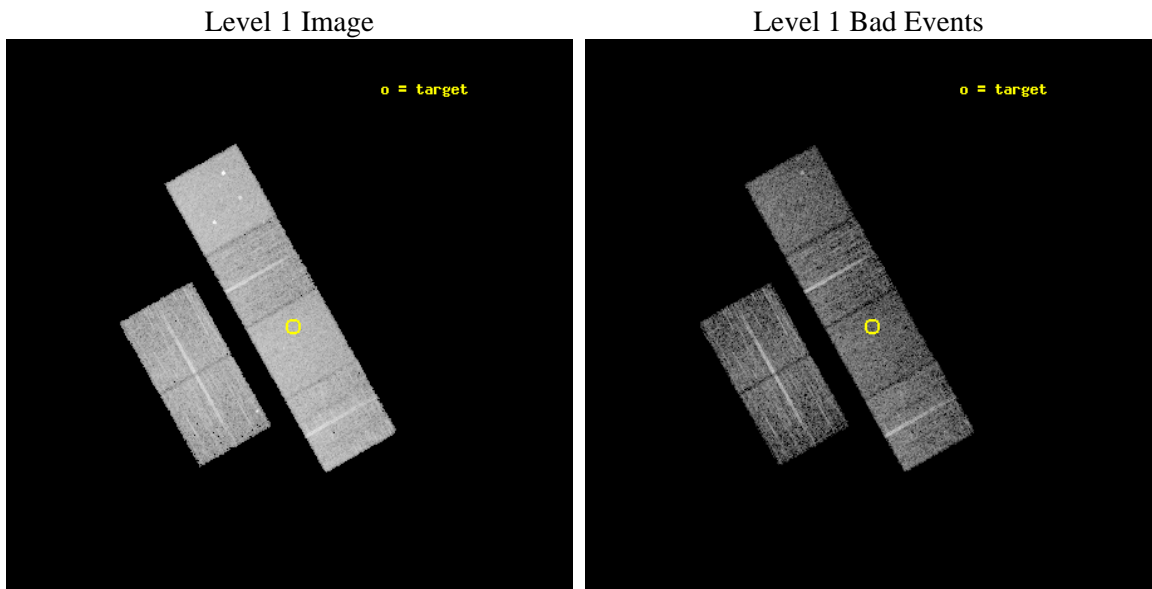
seq_num	600363	Sequence number
obs_id	4708	Observation id
title	Using the Sculptor Dwarf Spheroidal Galaxy to Constrain X-ray Binary Production in Population II	Proposal title
observer	Dr Thomas Maccarone	Principal investigator
object	SCULPTOR DWARF SPHEROIDAL	Source name
dtcycle	0	&#160
cycle	P	events from which exps? Prim/Second/Both
ra_targ	15.039167	Observer's specified target RA [deg]
dec_targ	-33.708889	Observer's specified target Dec [deg]
ra_nom	15.046462548457	Nominal RA [deg]
dec_nom	-33.701457968976	Nominal Dec [deg]
roll_nom	60.545006129726	Nominal Roll [deg]
revision	3	Processing version of data
ontime	5955.1999778152	Sum of GTIs [s]
livetime	5879.7916499051	Livetime [s]
ontime2	5951.9590075314	Sum of GTIs [s]
ontime3	5955.1782178581	Sum of GTIs [s]
ontime5	5955.1999778152	Sum of GTIs [s]
ontime6	5955.1999778152	Sum of GTIs [s]
ontime7	5955.1999778152	Sum of GTIs [s]
ontime8	5955.1371778846	Sum of GTIs [s]
l2events	71908	Number of level 2 events



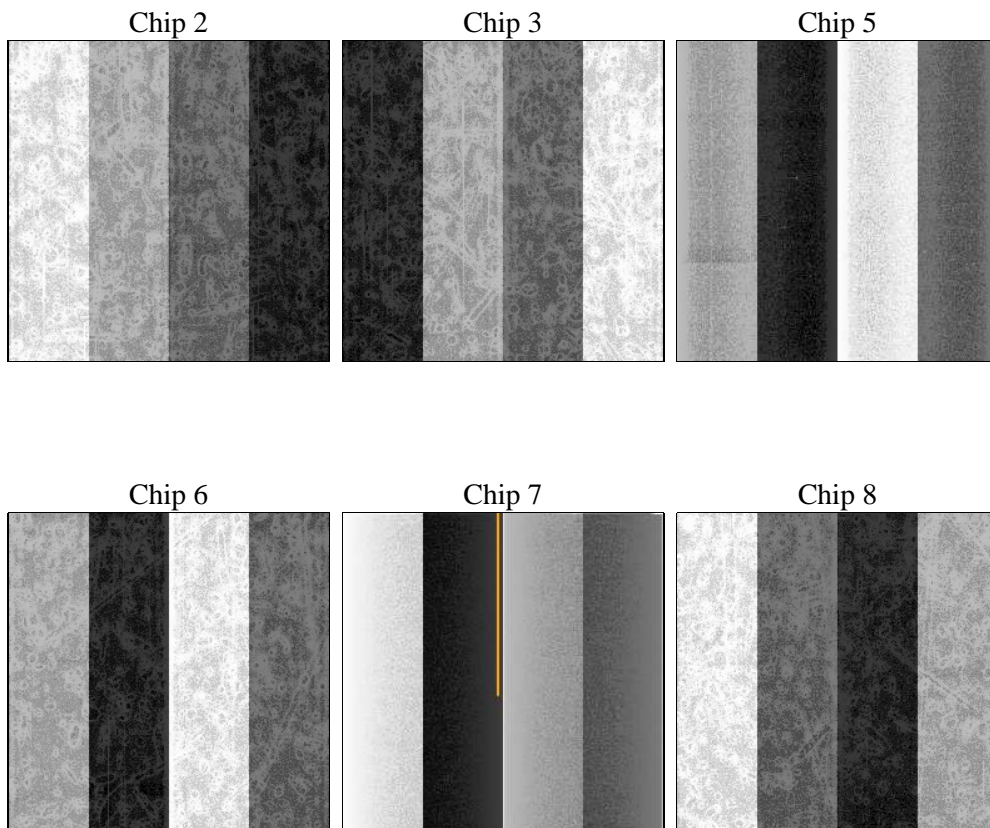
## 2 OBI

### 2.1 OBI

#### 2.1.1 Images



#### 2.1.2 Bias



### 2.1.3 Parameters

obi_num	0	Obi number	sched_exp_time	6000.000000	[s] Scheduled observation exposure time
ascdsver	8.5	Processing system revision	ontime	5955.1999778152	Sum of GTIs [s]
caldsver	4.5.4	&#160	ontime2	5951.9590075314	Sum of GTIs [s]
date	2012-12-08T07:53:33	Date and time of file creation	ontime3	5955.1782178581	Sum of GTIs [s]
revision	3	Processing version of data	ontime5	5955.1999778152	Sum of GTIs [s]
			ontime6	5955.1999778152	Sum of GTIs [s]
			ontime7	5955.1999778152	Sum of GTIs [s]
			ontime8	5955.1371778846	Sum of GTIs [s]
			l1events	317351	Number of level 1 events

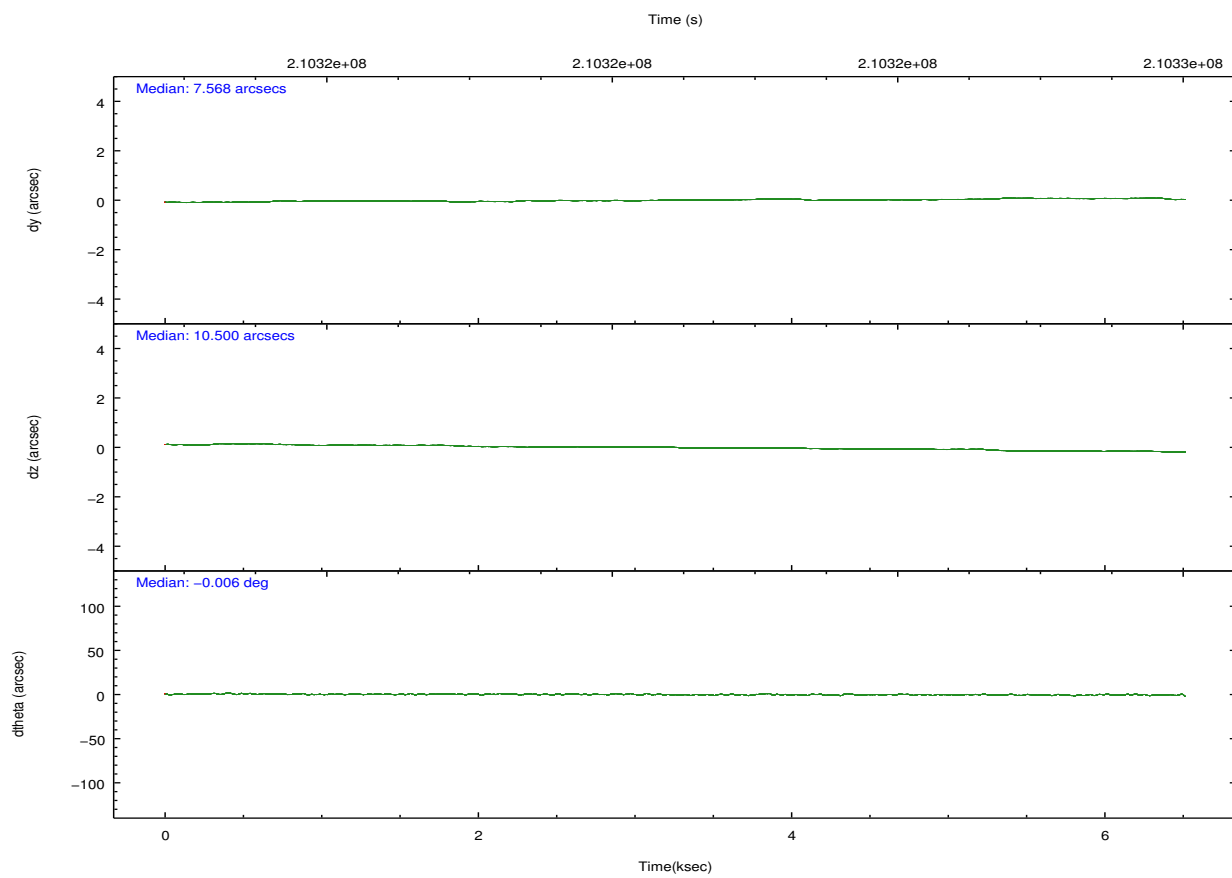
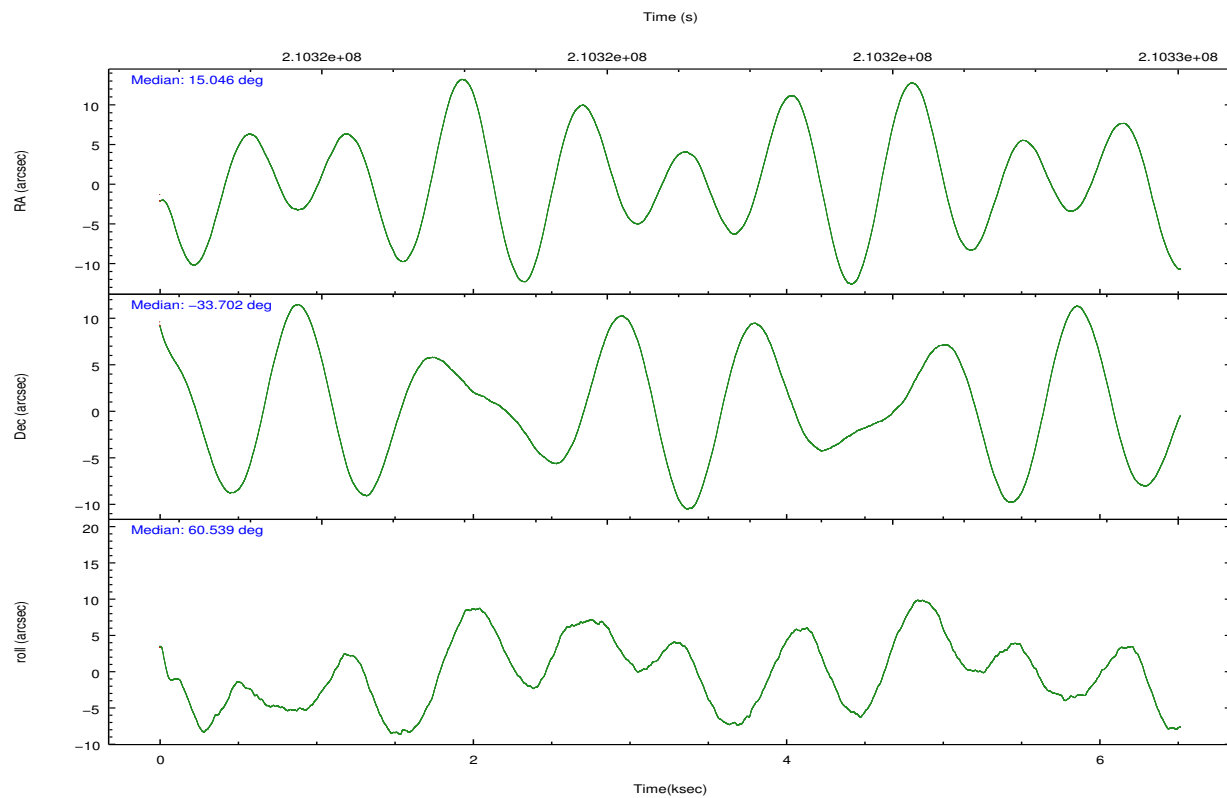
### 2.1.4 Events

	ccd 2	ccd 3	ccd 5	ccd 6	ccd 7	ccd 8		ccd 2	ccd 3	ccd 5	ccd 6	ccd 7	ccd 8
level 1 events	45630	43000	67015	43773	59595	58338	grade 0 events	2384	2493	3498	2229	2236	3831
rejected events	40368	37584	35561	38417	34986	46275		5%	5%	5%	5%	3%	6%
rejected %	88%	87%	53%	87%	58%	79%	grade 1 events	21	26	146	20	54	37
								0%	0%	0%	0%	0%	0%
							grade 2 events	1091	1001	9250	1100	4835	2705
								2%	2%	13%	2%	8%	4%
							grade 3 events	450	536	1330	497	2140	1255
								0%	1%	1%	1%	3%	2%
							grade 4 events	514	486	1192	509	2209	1201
								1%	1%	1%	1%	3%	2%
							grade 5 events	1793	1963	4882	2108	5684	2734
								3%	4%	7%	4%	9%	4%
							grade 6 events	831	908	16214	1038	13221	3098
								1%	2%	24%	2%	22%	5%
							grade 7 events	38546	35587	30503	36272	29216	43477
								84%	82%	45%	82%	49%	74%

## 2.2 Compared Parameters

Parameter	Planned	Actual	Parameter	Planned	Actual
Instrument	ACIS	ACIS	Obspar format version number	7	7
Detector	ACIS-235678	ACIS-235678	Obspar file type	PREDICTED	ACTUAL
Grating	NONE	NONE	Obspar update status	NONE	UPDATED
Data mode	VFAINT	VFAINT	Number of optional ACIS chips dropped	0	0
Observation mode	POINTING	POINTING	On-chip summing requested	N	N
[deg] Pointing RA	15.047324	15.04646254845716	Subarray requested	NONE	NONE
[deg] Pointing Dec	-33.728659	-33.70145796897582	Alternating exposures requested	N	N
[deg] Pointing Roll	60.388839	60.54500612972608	[s] Primary exposure time	0.000000	3.2
[mm] SIM focus pos	-0.684267	-0.6828225247311905			
[mm] SIM defocus	0	0.001444936568705701			
[mm] SIM translation stage pos	-190.132523	-190.1400660498719			
[mm] SIM translation stage offset	0	0.00754346686406393			
[s] Observation start time (MET)	210319699.184000	210318426.59914			
Observation start date	2004-08-31T06:07:15	2004-08-31T05:47:06			
[s] Observation end time (MET)	210325699.184000	210326785.98701			
Observation end date	2004-08-31T07:47:15	2004-08-31T08:06:25			
Read mode	TIMED	TIMED			

## 2.3 Aspect

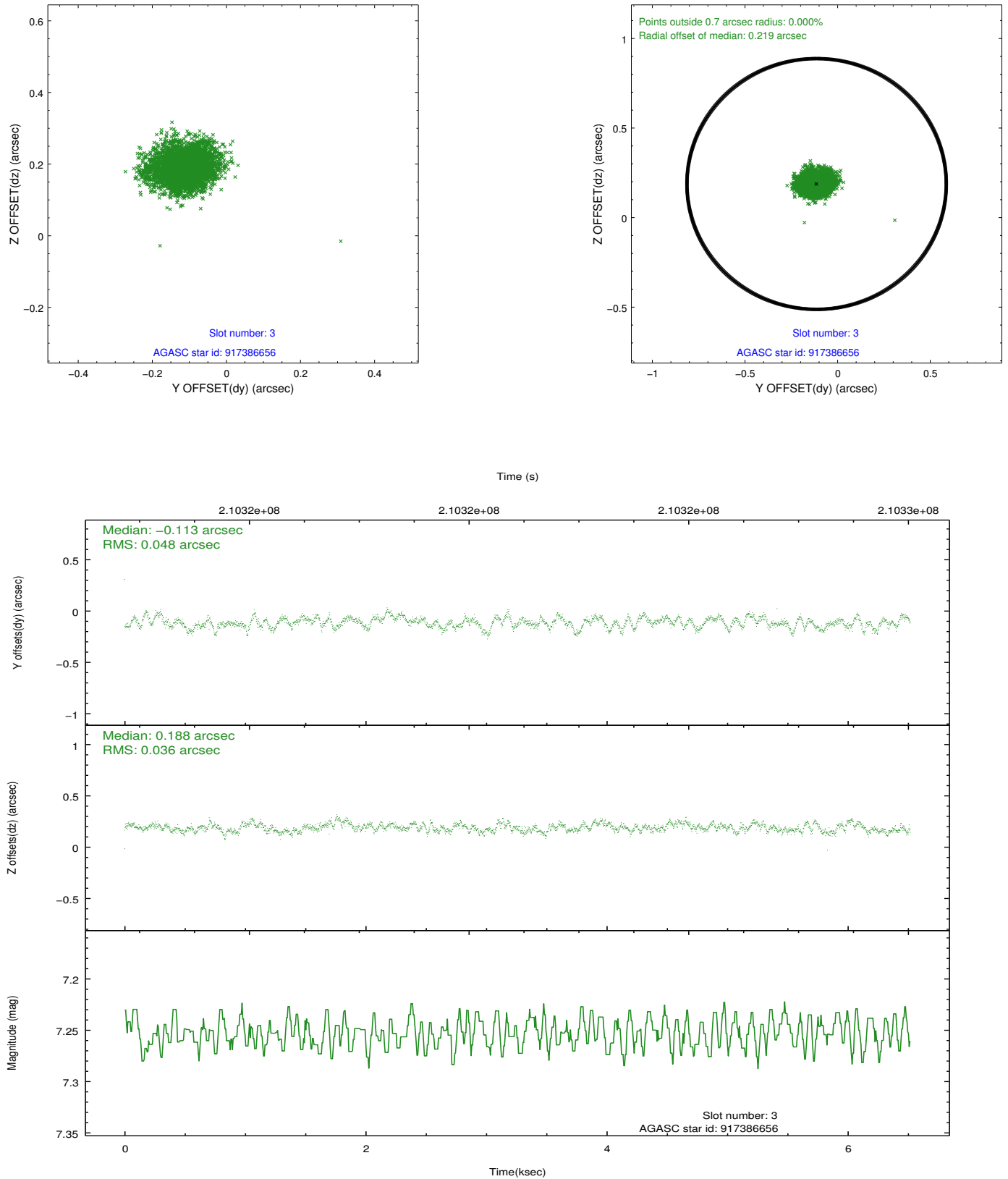


### Slot Statistics

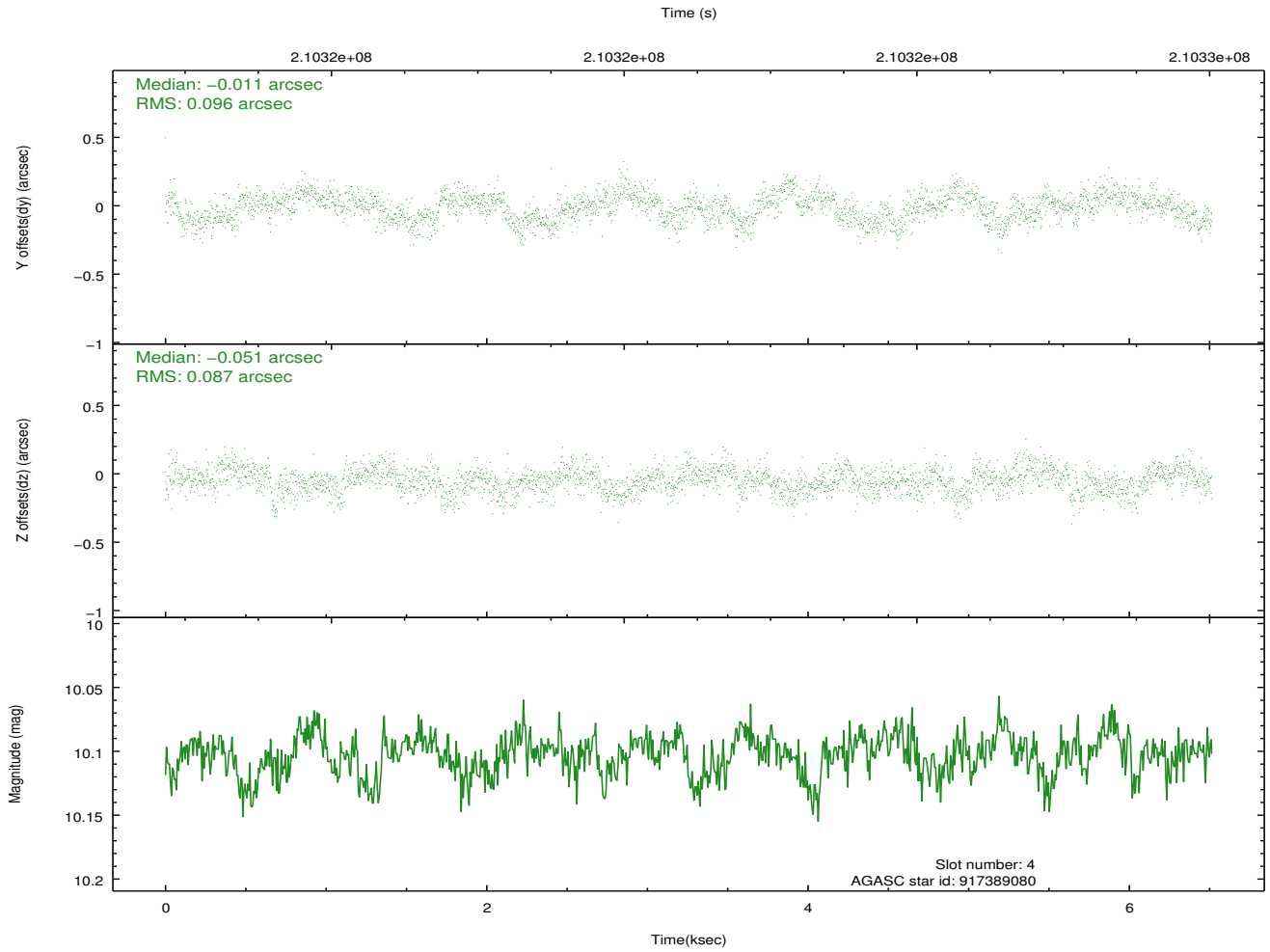
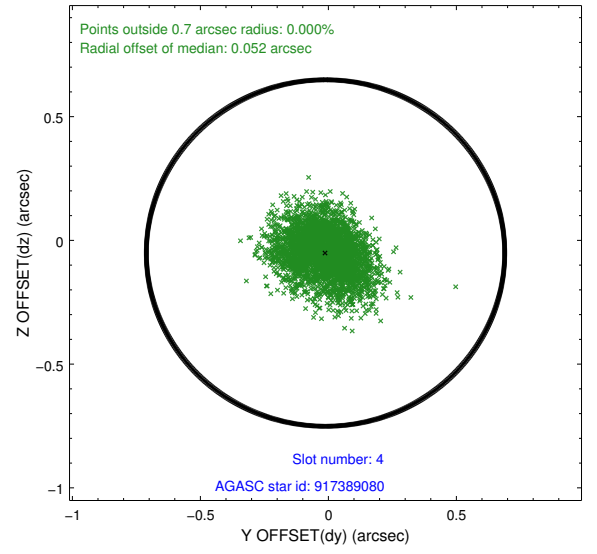
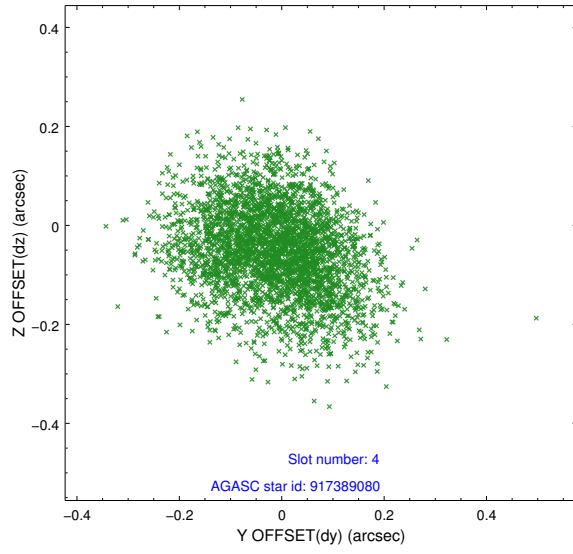
slot	status	id	mag	n_pts	med_dy	med_dz	dr1	dr2	ra	dec	mean_y	mean_z
0	FID	ACIS-S-1	7.18	1590	0.042	-0.069	0.007	0.012	0.000000	0.000000	935.75	-1727.44
1	FID	ACIS-S-5	7.23	1590	-0.074	0.024	0.006	0.011	0.000000	0.000000	-1812.86	169.27
2	FID	ACIS-S-6	7.35	1590	0.010	0.057	0.008	0.013	0.000000	0.000000	400.30	814.29
3	GUIDE	917386656	7.25	3180	-0.113	0.188	0.064	0.103	15.342124	-33.359890	1591.52	-115.05
4	GUIDE	917389080	10.10	3175	-0.011	-0.051	0.138	0.223	15.722484	-33.662555	1201.88	-1644.54
5	GUIDE	917389288	9.57	3178	-0.104	0.009	0.107	0.174	15.394706	-33.185862	2215.12	54.34
6	GUIDE	917650528	8.72	3180	0.118	-0.019	0.070	0.114	14.274554	-33.869842	-1589.67	1752.57
7	GUIDE	917651768	9.62	3177	0.110	-0.126	0.114	0.187	14.115744	-33.817552	-1666.07	2258.10

## 2.4 Star Slots

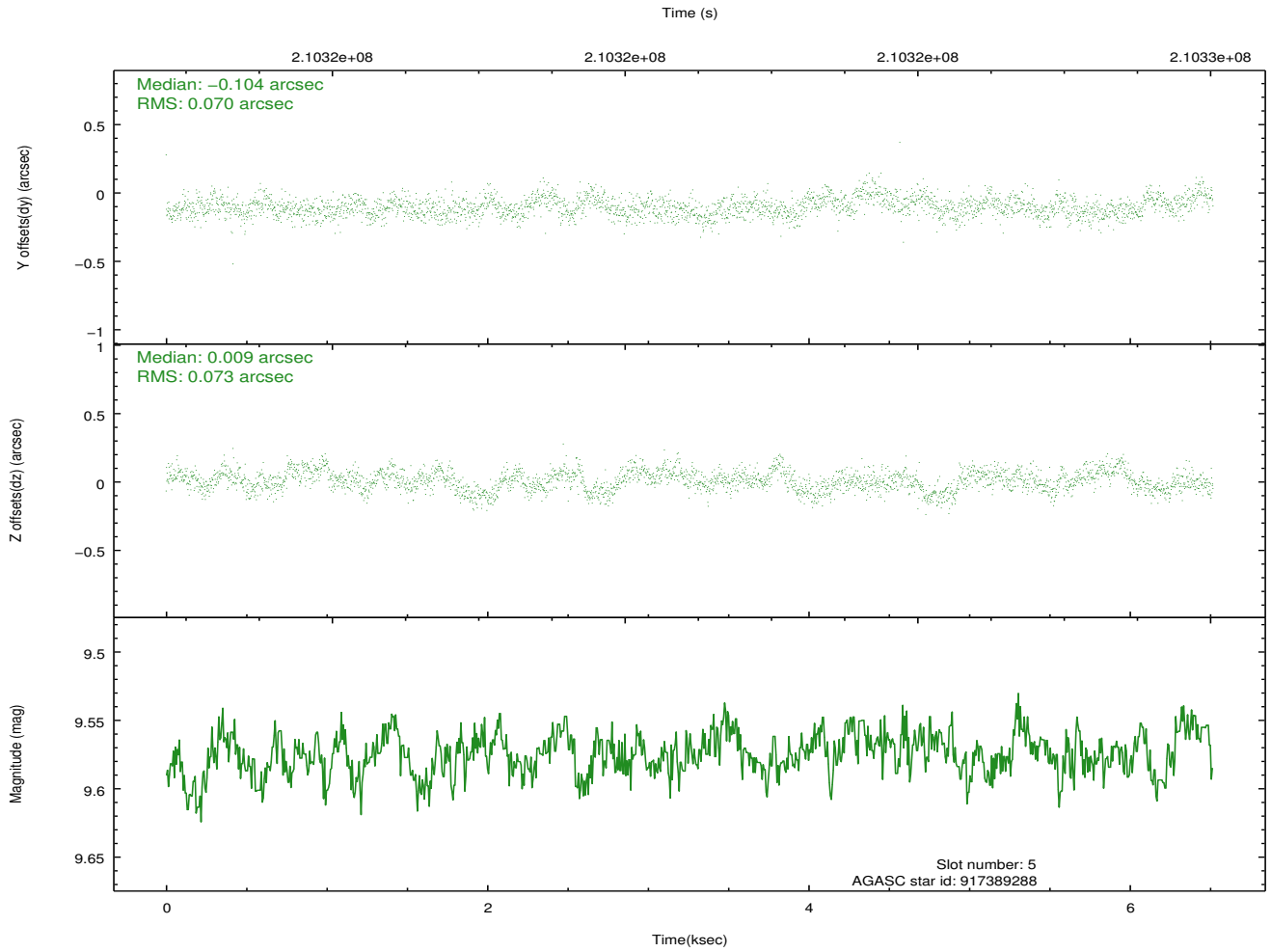
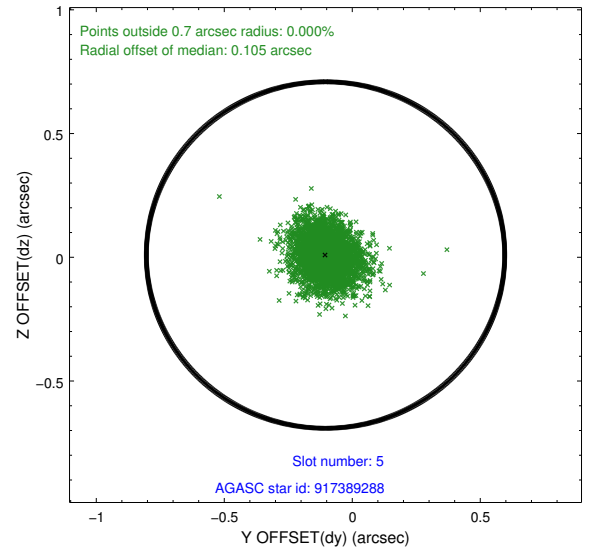
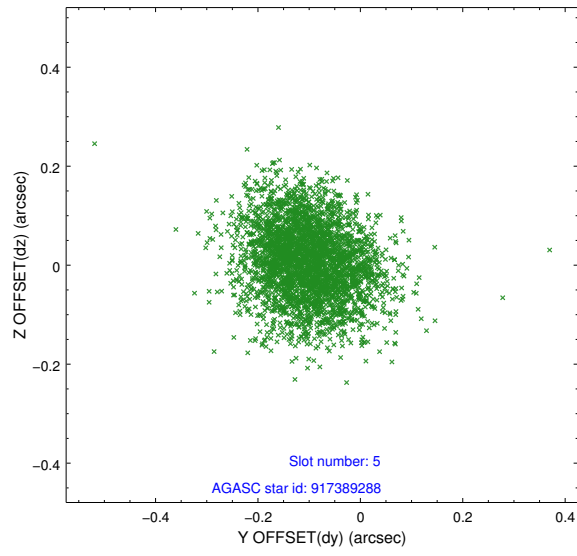
### 2.4.1 Slot 3



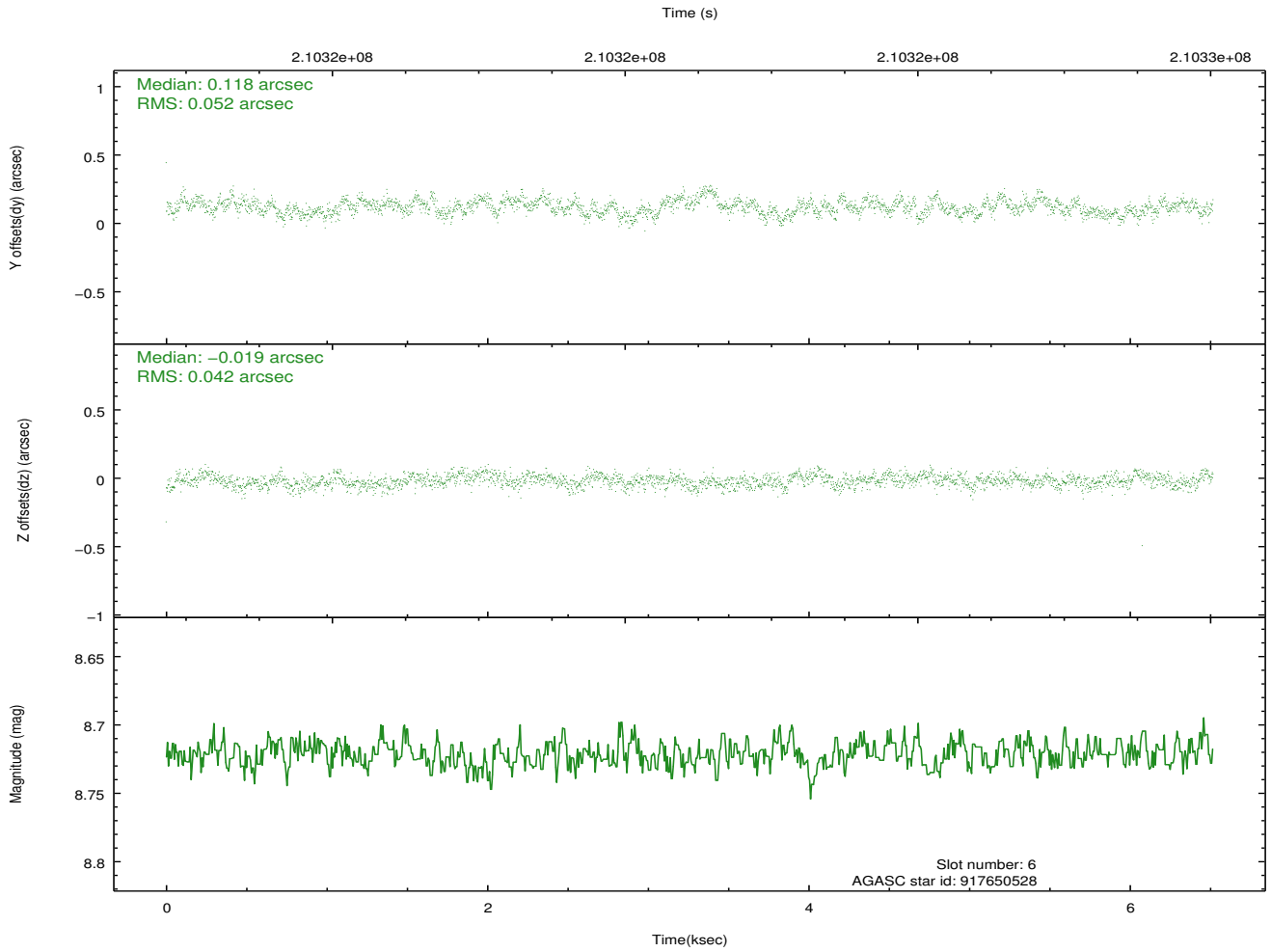
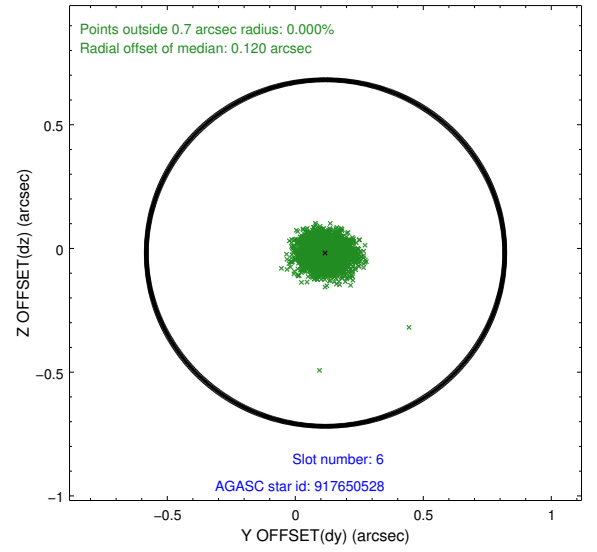
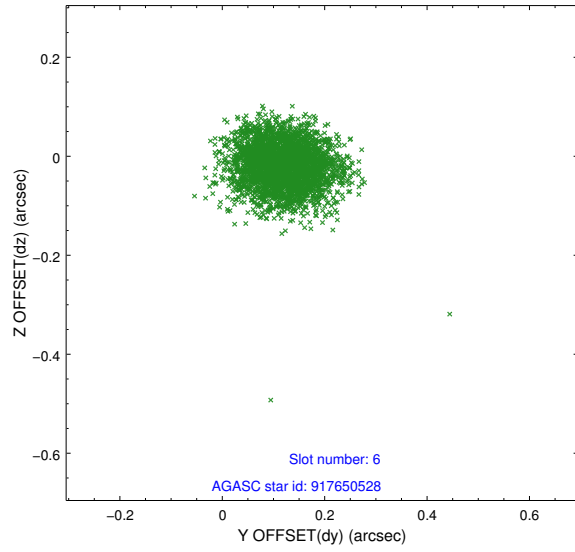
## 2.4.2 Slot 4



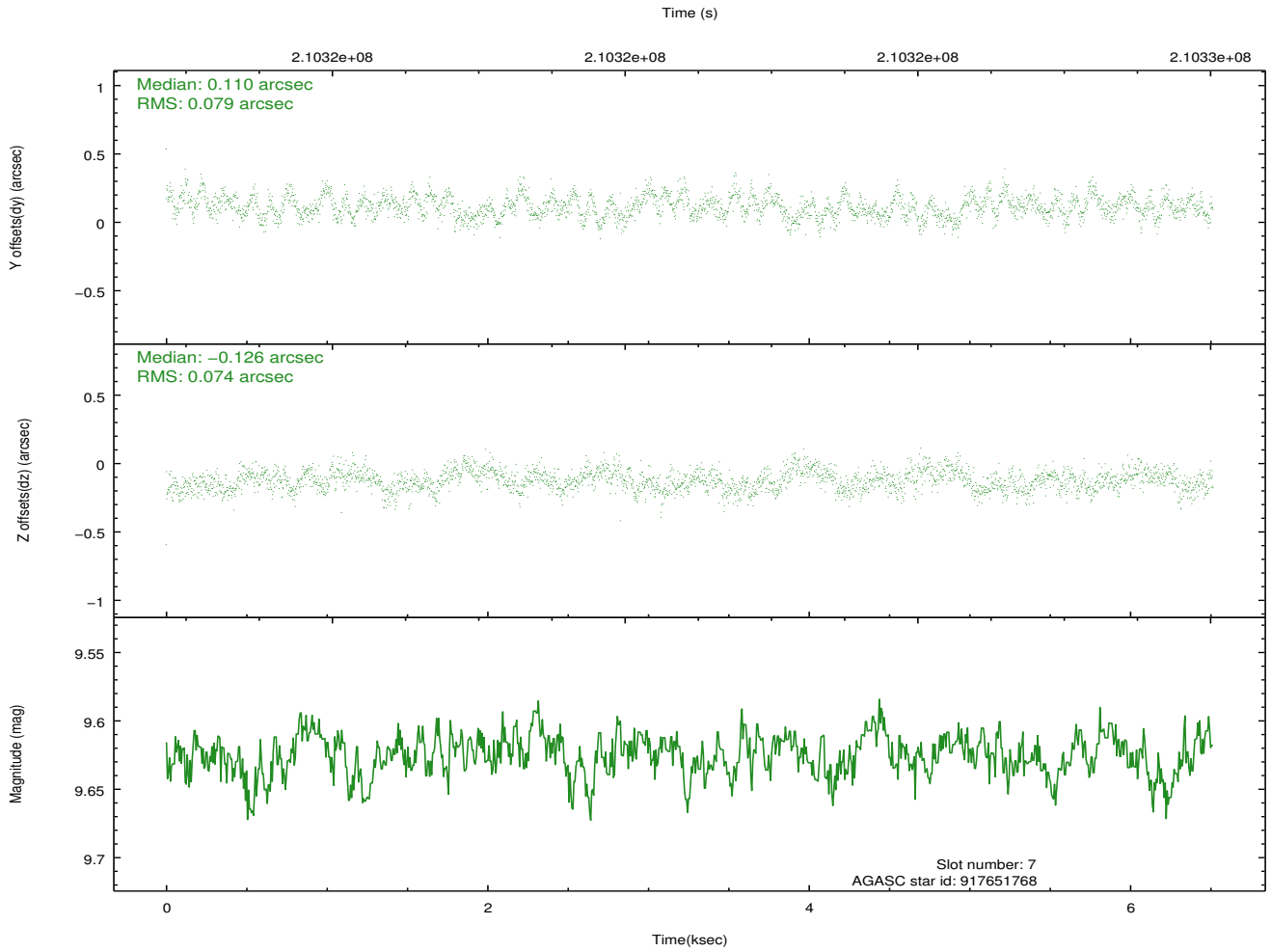
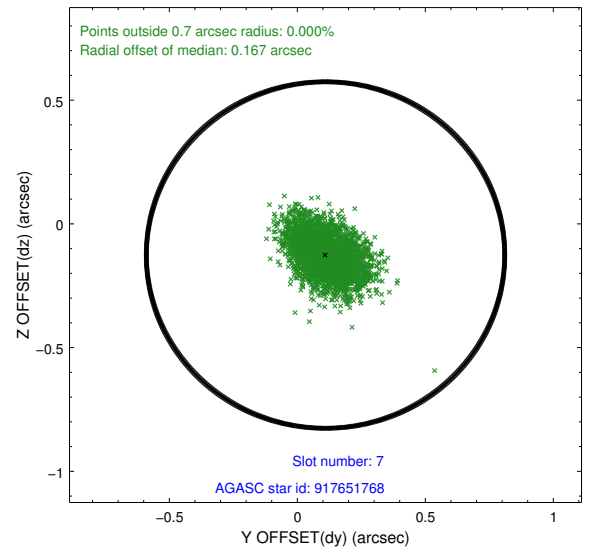
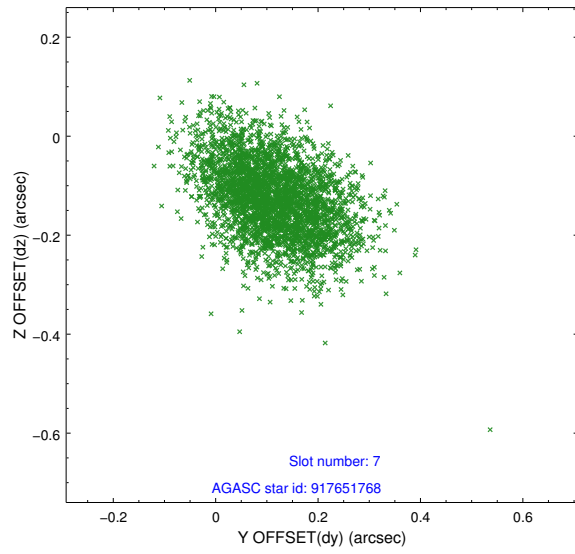
### 2.4.3 Slot 5



## 2.4.4 Slot 6

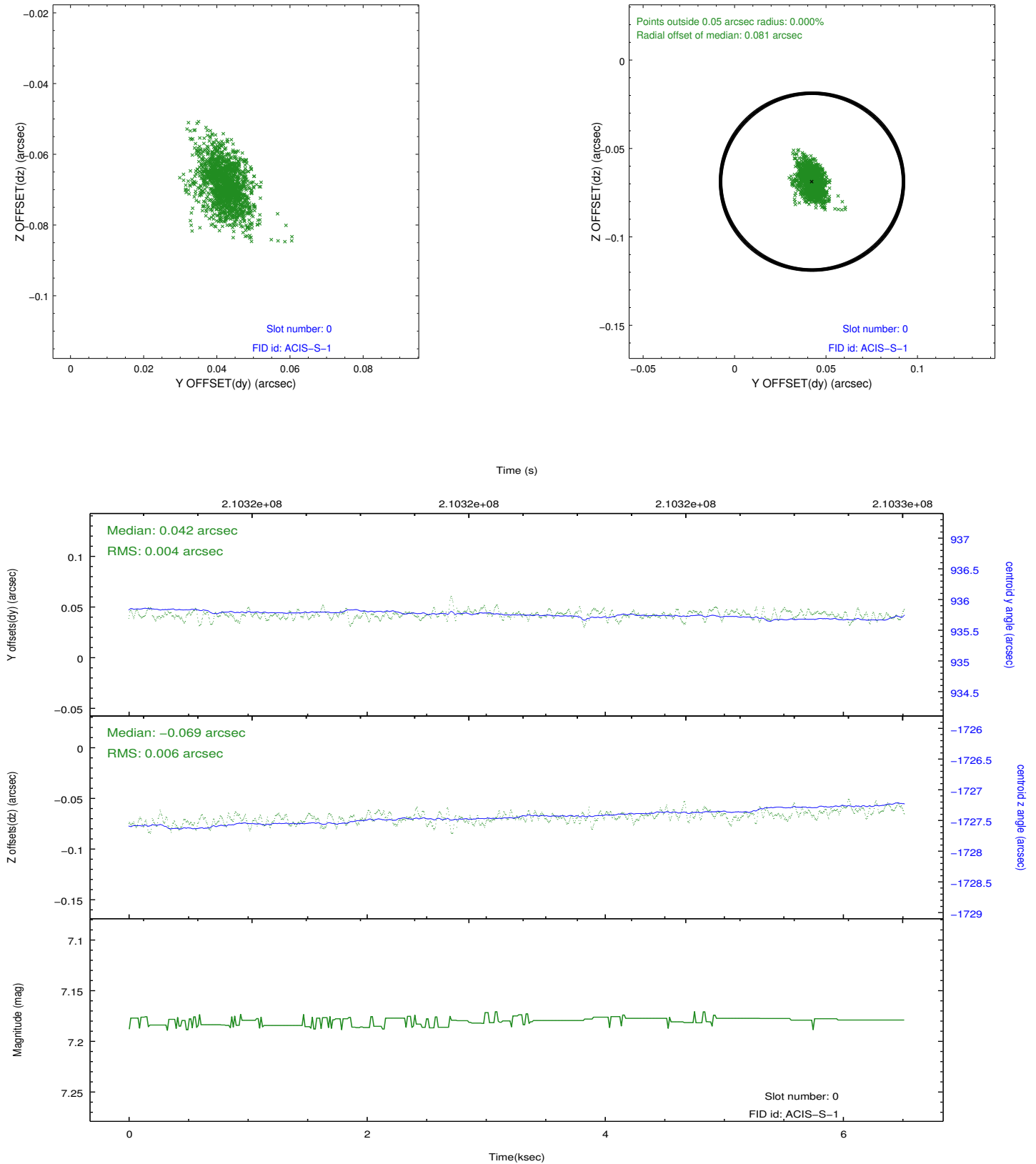


## 2.4.5 Slot 7

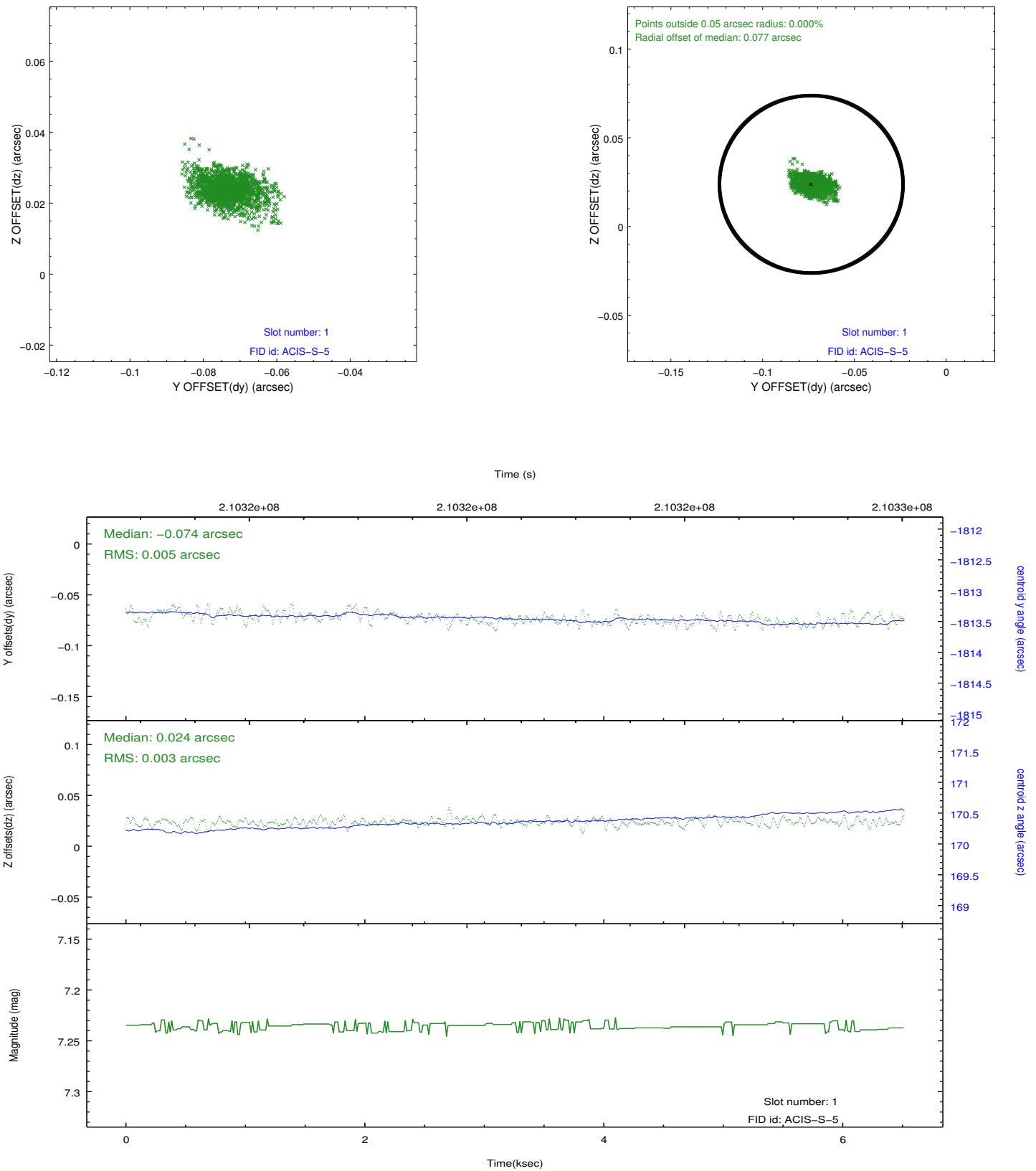


## 2.5 FID Slots

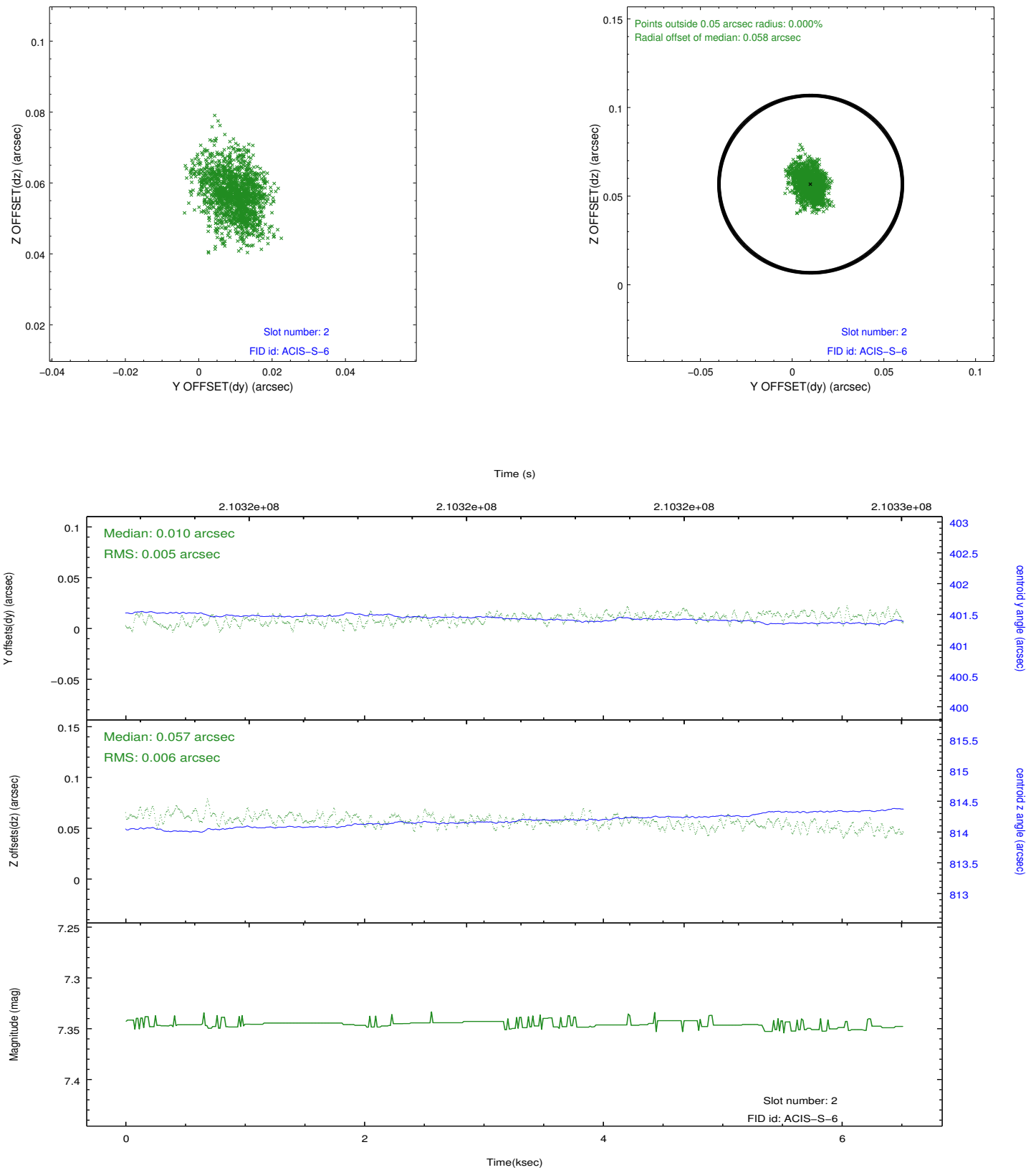
### 2.5.1 Slot 0



## 2.5.2 Slot 1



### 2.5.3 Slot 2



## A Summary

### A.1 Status

V&V Scientist	Jen Lauer
V&V Date (YYYY-MM-DD)	2012.12.21
V&V Edition	1
V&V Disposition and Status	OK
V&V Charge Time	5.955

### A.2 Comments

Monitor constraint met. Joint Proposal: NOAO