

# V&V Reference Report

## L2 ASCDS Version : 7.6.8

Observation 4528 - L2 Version 001  
Chandra X-Ray Center

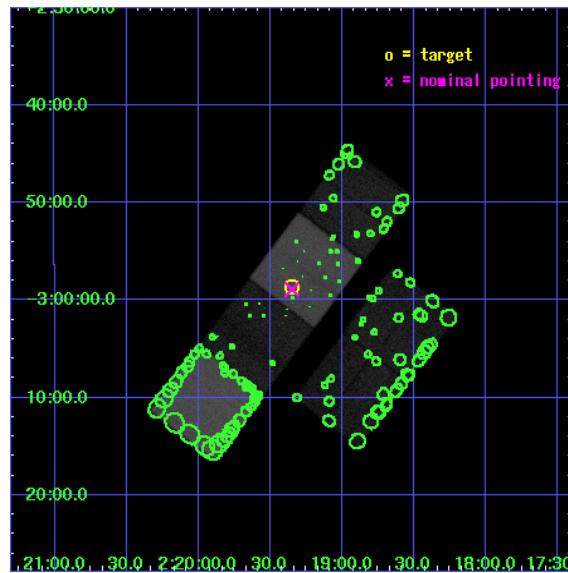
L2 Processing Date : Jun 23 2006

## Contents

<b>1</b>	<b>Front</b>	<b>2</b>
<b>2</b>	<b>OBI</b>	<b>3</b>
2.1	OBI . . . . .	3
2.1.1	Images . . . . .	3
2.1.2	Bias . . . . .	3
2.1.3	Parameters . . . . .	4
2.1.4	Events . . . . .	4
2.2	Compared Parameters . . . . .	5
2.3	Aspect . . . . .	6
2.4	Star Slots . . . . .	9
2.4.1	Slot 3 . . . . .	9
2.4.2	Slot 4 . . . . .	10
2.4.3	Slot 5 . . . . .	11
2.4.4	Slot 6 . . . . .	12
2.4.5	Slot 7 . . . . .	13
2.5	FID Slots . . . . .	14
2.5.1	Slot 0 . . . . .	14
2.5.2	Slot 1 . . . . .	15
2.5.3	Slot 2 . . . . .	16
<b>3</b>	<b>Point Sources</b>	<b>17</b>
<b>A</b>	<b>Summary</b>	<b>18</b>
A.1	Status . . . . .	18
A.2	Comments . . . . .	18

# 1 Front

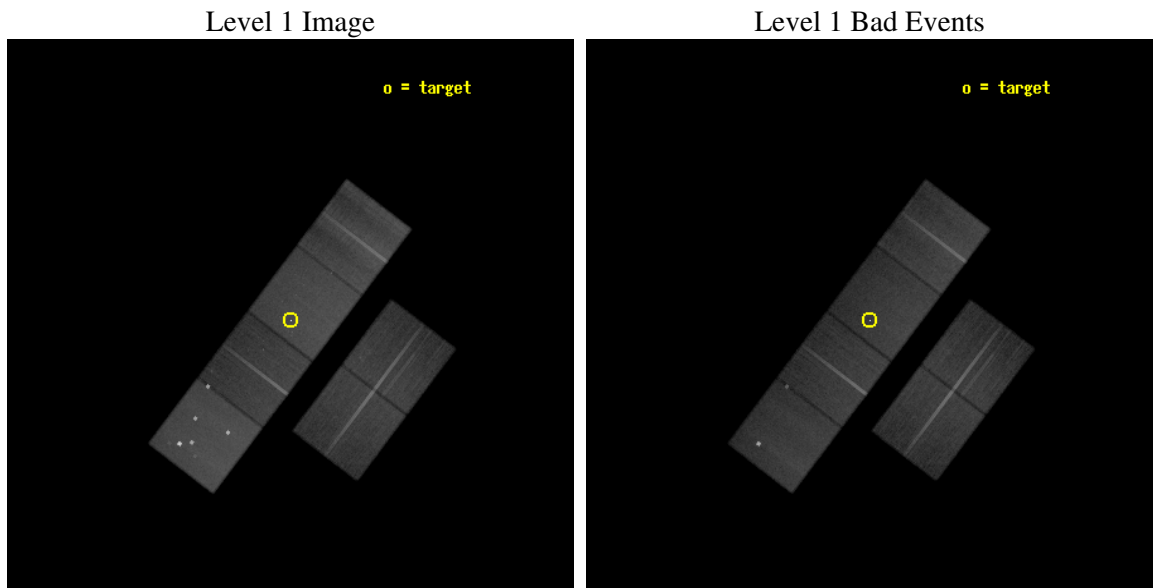
seq_num	300122
obs_id	4528
title	Mira AB - A Unique Laboratory for Wind Accretion Studies
observer	Dr. Margarita Karovska
object	MIRA AB
dtcycle	0
cycle	P
ra_targ	34.83625
dec_targ	-2.977642
ra_nom	34.837339360549
dec_nom	-2.9818435234685
roll_nom	307.23534037299
revision	2
ontime	66504.575154781
livetime	65662.454179924
ontime2	66491.611223698
ontime3	66511.05715543
ontime5	66504.575134814
ontime6	66504.575194627
ontime7	66504.575154781
ontime8	66520.780086219
l2events	596316



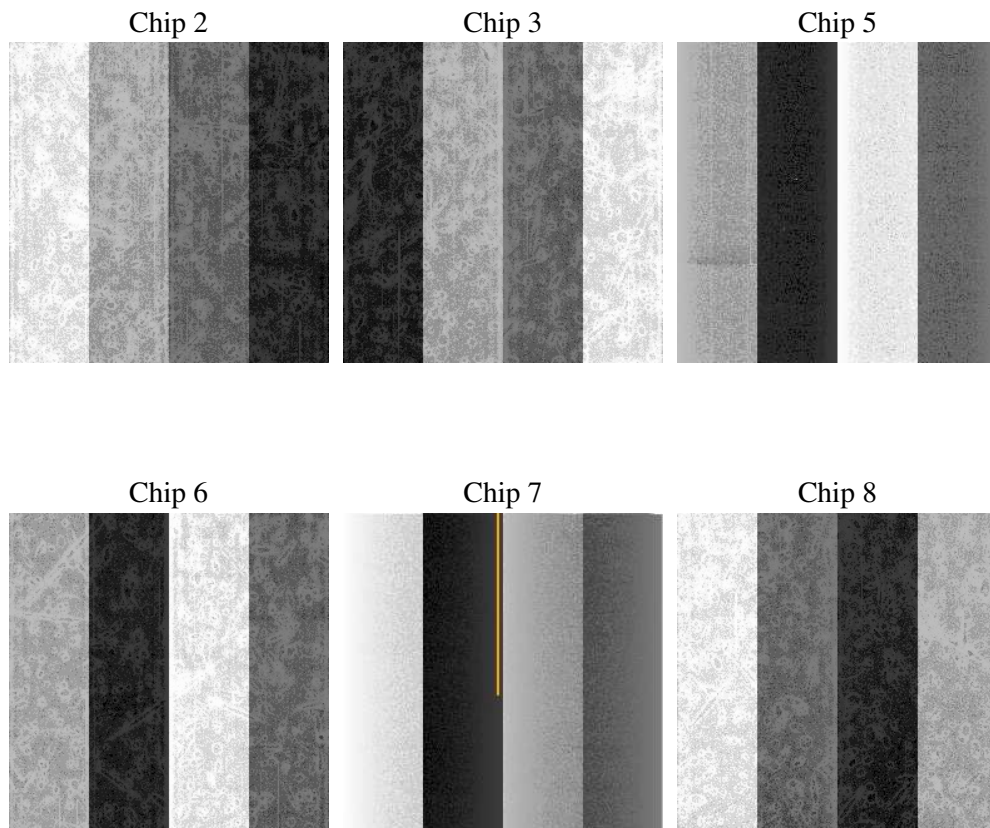
## 2 OBI

### 2.1 OBI

#### 2.1.1 Images



#### 2.1.2 Bias



### 2.1.3 Parameters

obi_num	1
ascdsver	7.6.8
caldsver	3.2.2
date	2006-06-23T13:12:04
revision	2

sched_exp_time	66407.501000
ontime	66674.086487561
ontime2	66661.122556478
ontime3	66680.56848821
ontime5	66674.086487532
ontime6	66674.086527407
ontime7	66674.086487561
ontime8	66690.291418999
l1events	2805241

### 2.1.4 Events

	ccd 2	ccd 3	ccd 5	ccd 6	ccd 7	ccd 8
level 1 events	380816	369972	635554	383954	537675	497270
rejected events	335313	324515	333131	337021	333729	382943
rejected %	88%	87%	52%	87%	62%	77%

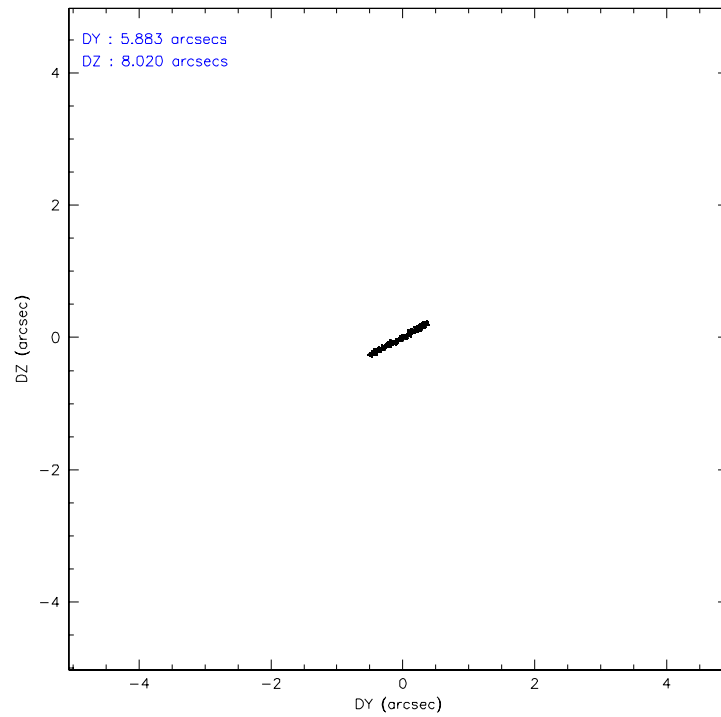
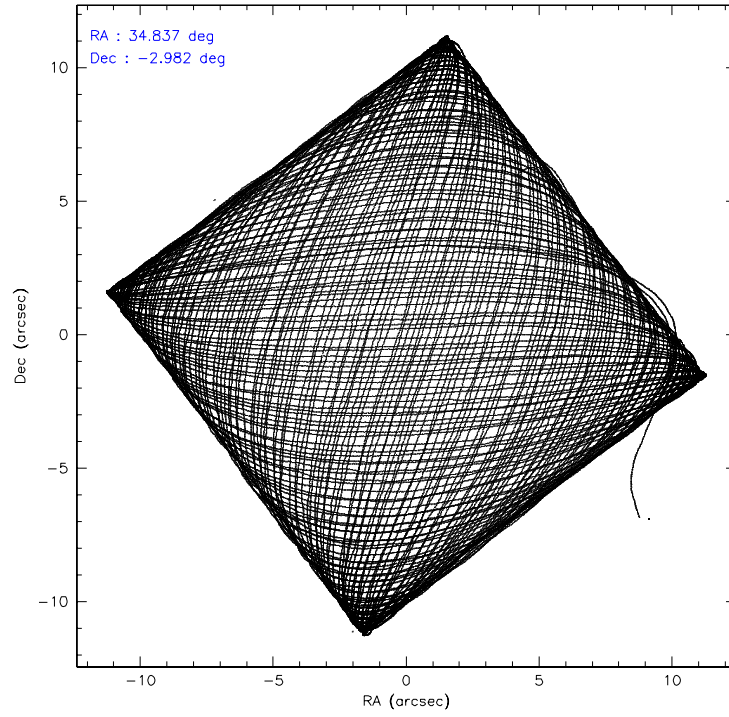
	ccd 2	ccd 3	ccd 5	ccd 6	ccd 7	ccd 8
grade 0 events	20113	19830	59342	18679	11486	36438
	5%	5%	9%	4%	2%	7%
grade 1 events	234	197	764	182	522	347
	0%	0%	0%	0%	0%	0%
grade 2 events	9275	8916	80018	10015	49470	24184
	2%	2%	12%	2%	9%	4%
grade 3 events	4243	4329	10869	4496	10189	12747
	1%	1%	1%	1%	1%	2%
grade 4 events	4274	4344	7242	4464	10047	12101
	1%	1%	1%	1%	1%	2%
grade 5 events	15309	16782	29431	17511	35655	23465
	4%	4%	4%	4%	6%	4%
grade 6 events	7732	8145	145661	9421	123282	29130
	2%	2%	22%	2%	22%	5%
grade 7 events	319636	307429	302227	319186	297024	358858
	83%	83%	47%	83%	55%	72%

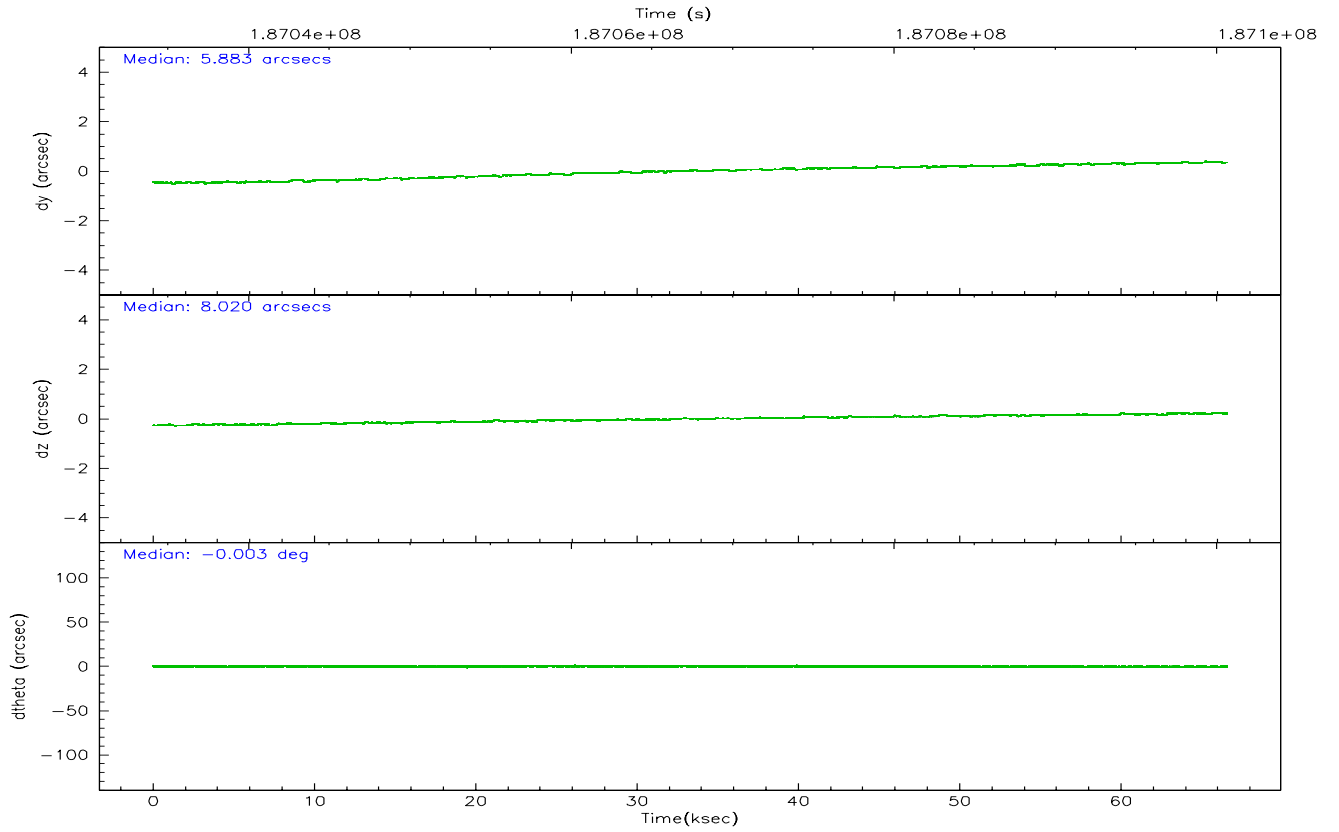
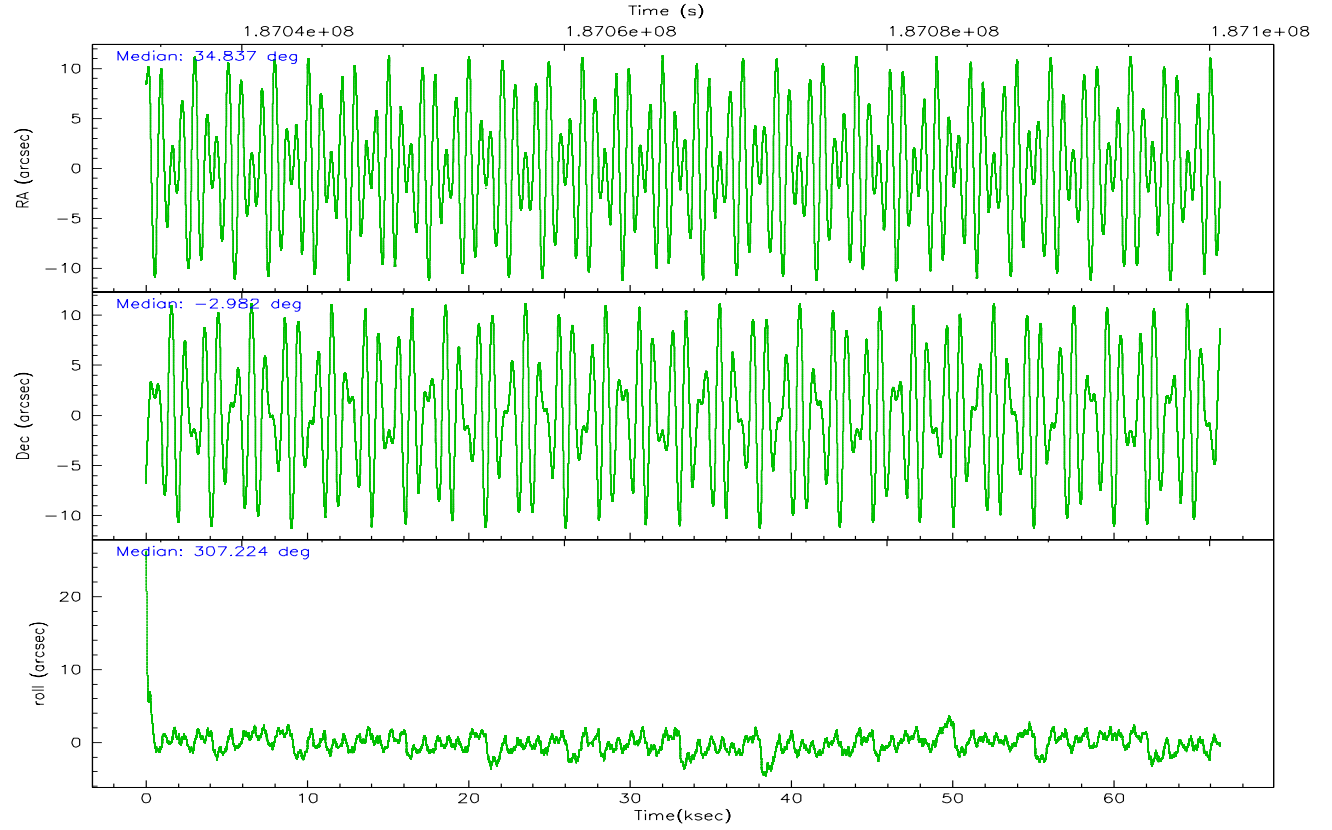


## 2.2 Compared Parameters

Parameter	Planned	Actual	Parameter	Planned	Actual
Instrument	ACIS	ACIS	Obspar format version number	6	6
Detector	ACIS-235678	ACIS-235678	Obspar file type	PREDICTED	ACTUAL
Grating	NONE	NONE	Obspar update status	NONE	UPDATED
Data mode	FAINT	FAINT	On-chip summing requested	N	N
Observation mode	POINTING	POINTING	Subarray requested	NONE	NONE
Pointing RA	34.812065	34.83733936054895	Alternating exposures requested	N	N
Pointing Dec	-2.971668	-2.981843523468463	Primary exposure time	0.000000	3.2
Pointing Roll	307.077398	307.2353403729867			
SIM focus pos (mm)	-0.684267	-0.6828225247311905			
SIM defocus (mm)	0	0.001444936568705701			
SIM translation stage pos (mm)	-190.132523	-190.1425803651734			
SIM translation stage offset (mm)	0	0.01005778216563158			
Observation start time	187034261.184000	187033111.07437			
Observation start date	2003-12-05T17:56:37	2003-12-05T17:38:31			
Observation end time	187100669.184000	187100983.50231			
Observation end date	2003-12-06T12:23:25	2003-12-06T12:29:43			
Read mode	TIMED	TIMED			

## 2.3 Aspect



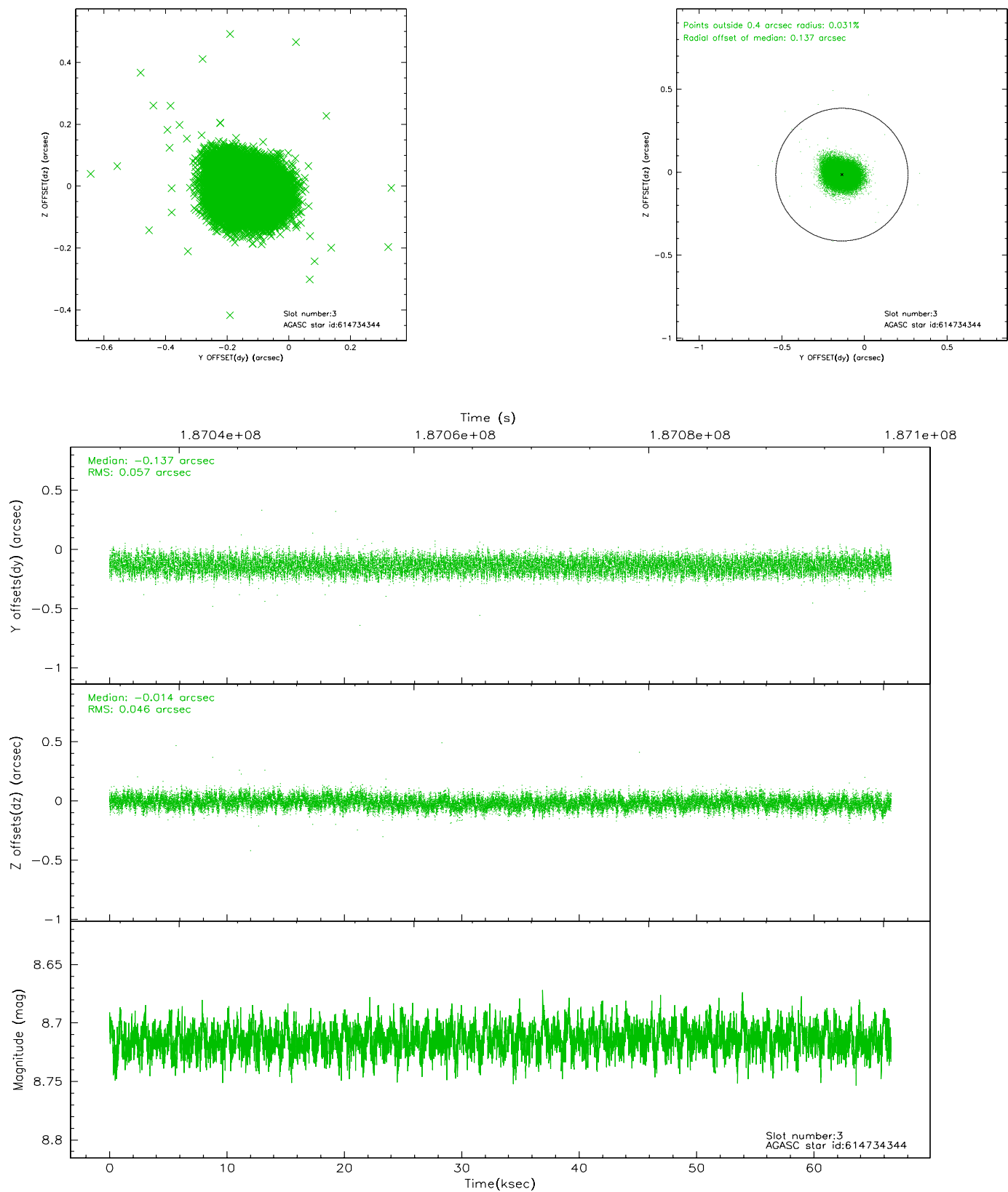


### Slot Statistics

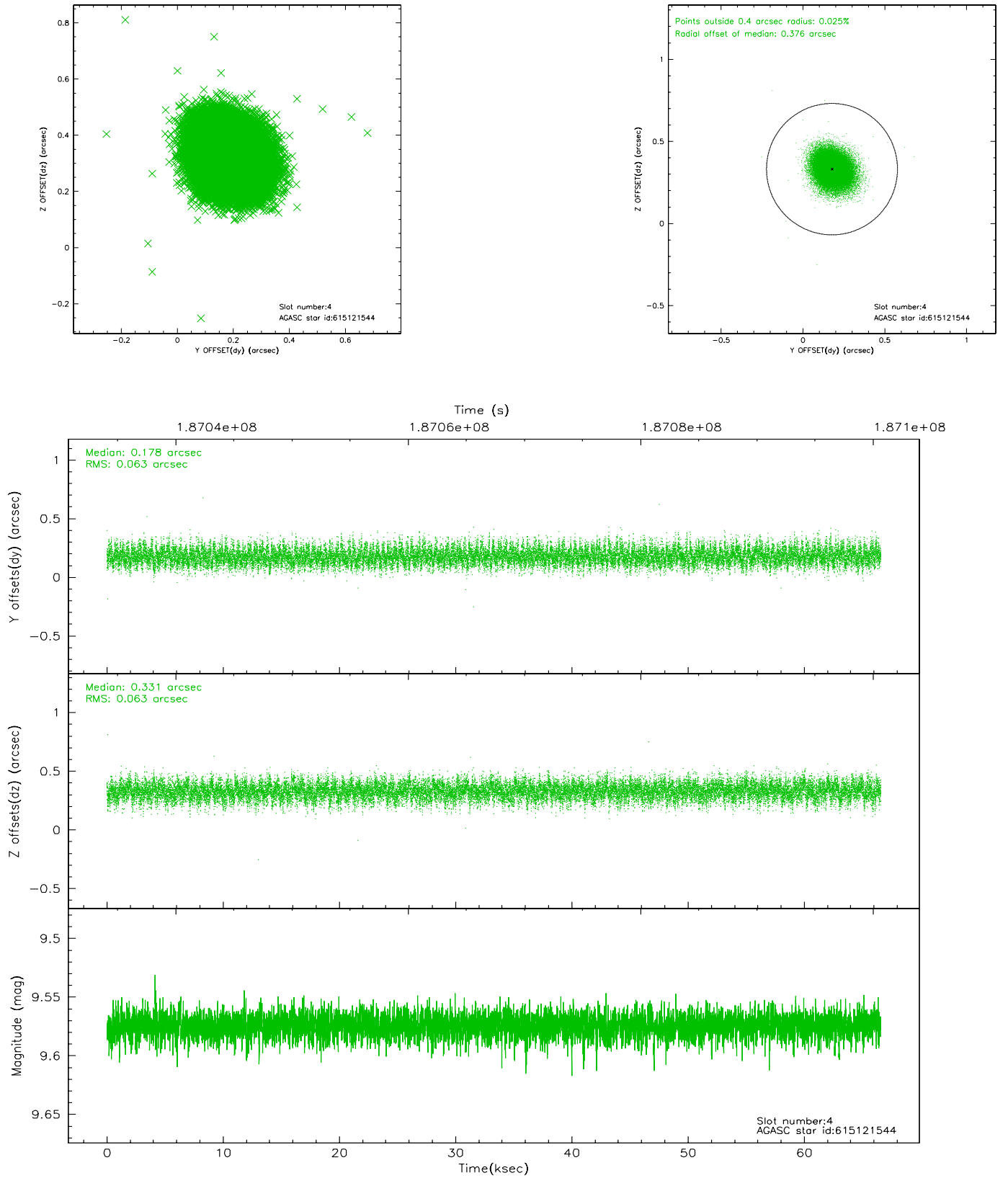
slot	status	id	mag	n_pts	med_dy	med_dz	dr1	dr2	ra	dec	mean_y	mean_z
0	FID	ACIS-S-2	7.11	16199	-0.021	-0.020	0.009	0.015	0.000000	0.000000	-758.61	-1729.16
1	FID	ACIS-S-4	7.21	16190	0.019	0.015	0.020	0.033	0.000000	0.000000	2154.76	179.38
2	FID	ACIS-S-5	7.23	16195	-0.031	0.013	0.014	0.025	0.000000	0.000000	-1811.51	173.04
3	GUIDE	614734344	8.71	32426	-0.137	-0.014	0.078	0.123	34.946145	-2.225313	-1853.10	2004.92
4	GUIDE	615121544	9.57	32397	0.178	0.331	0.094	0.153	34.477810	-2.784253	-1262.21	-551.56
5	GUIDE	615128744	9.70	32390	0.023	-0.170	0.128	0.215	34.665081	-3.483267	1151.52	-1531.19
6	GUIDE	614735120	9.94	32388	-0.035	0.056	0.125	0.205	34.748874	-2.202876	-2344.88	1487.31
7	GUIDE	615121360	9.71	32398	-0.031	-0.211	0.110	0.185	34.206276	-2.936187	-1413.90	-1660.73

## 2.4 Star Slots

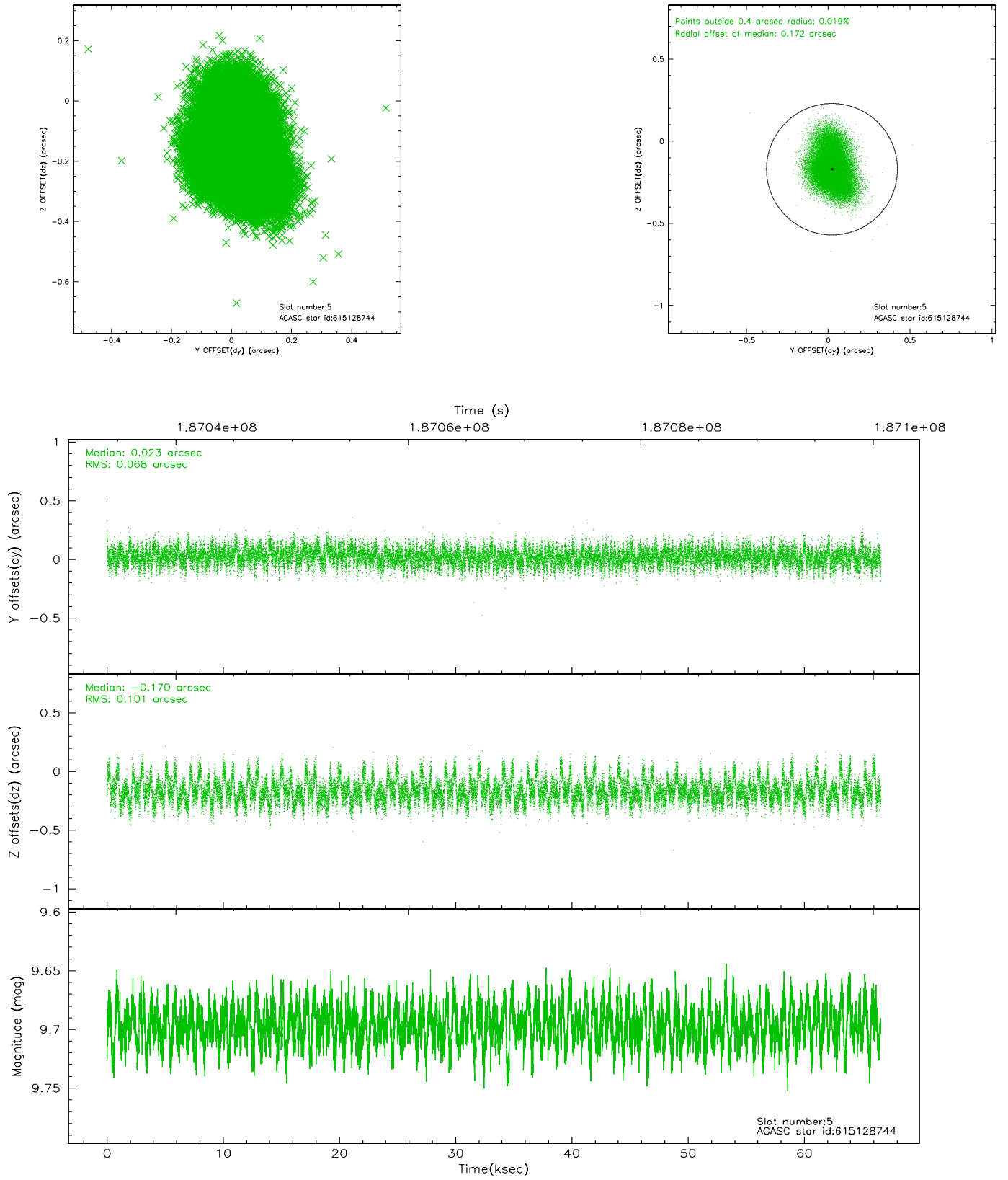
### 2.4.1 Slot 3



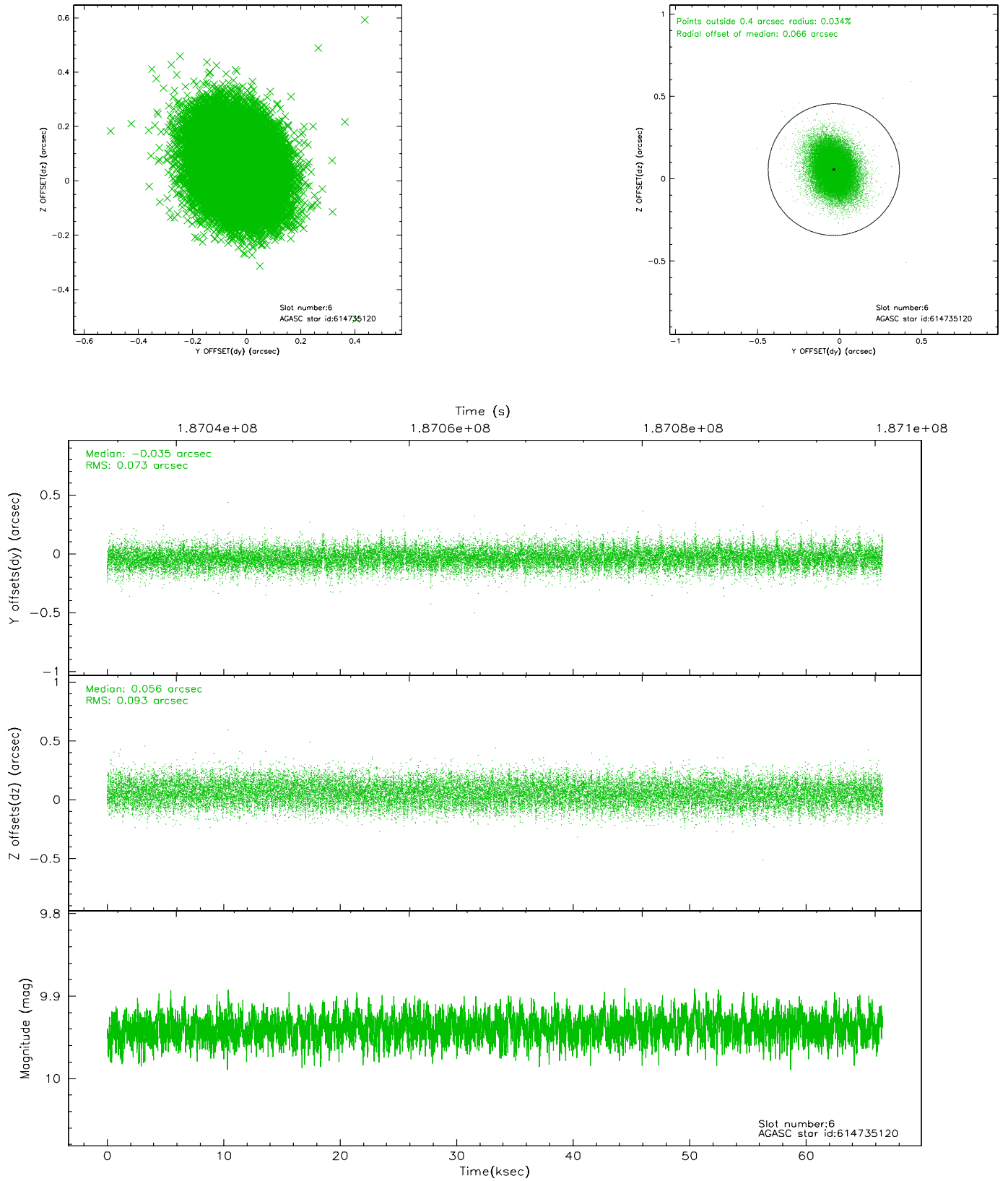
## 2.4.2 Slot 4



### 2.4.3 Slot 5

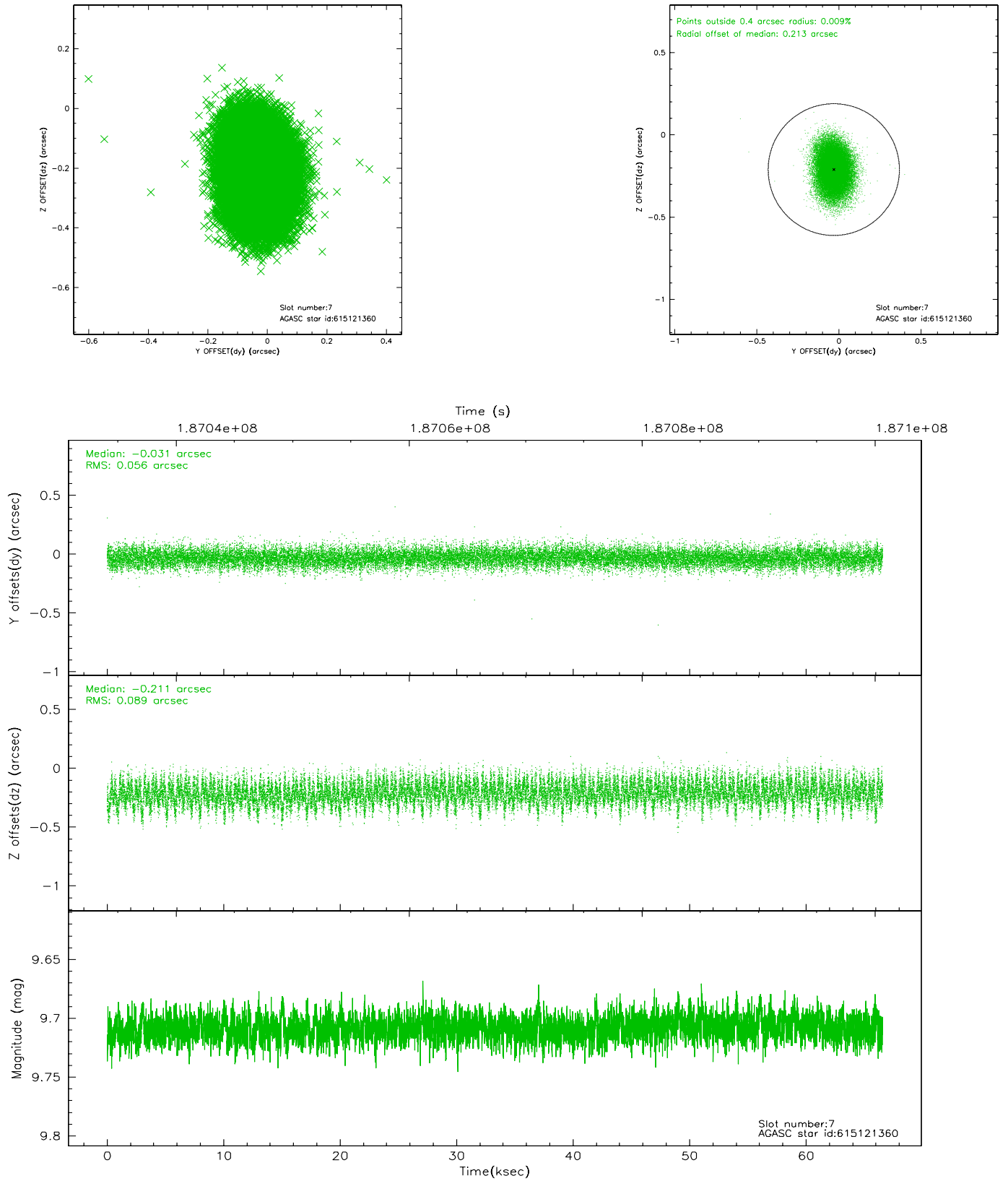


## 2.4.4 Slot 6



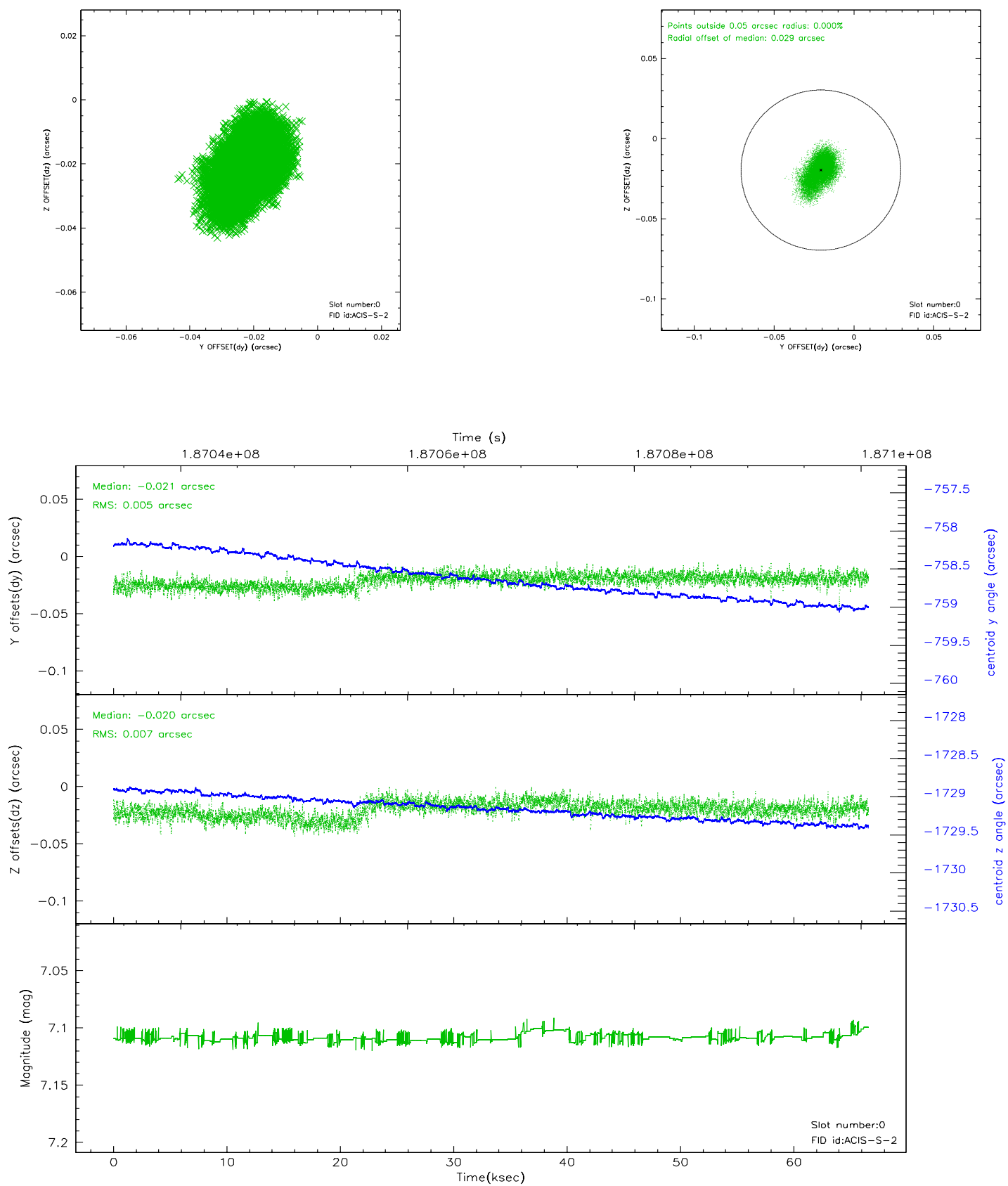


## 2.4.5 Slot 7

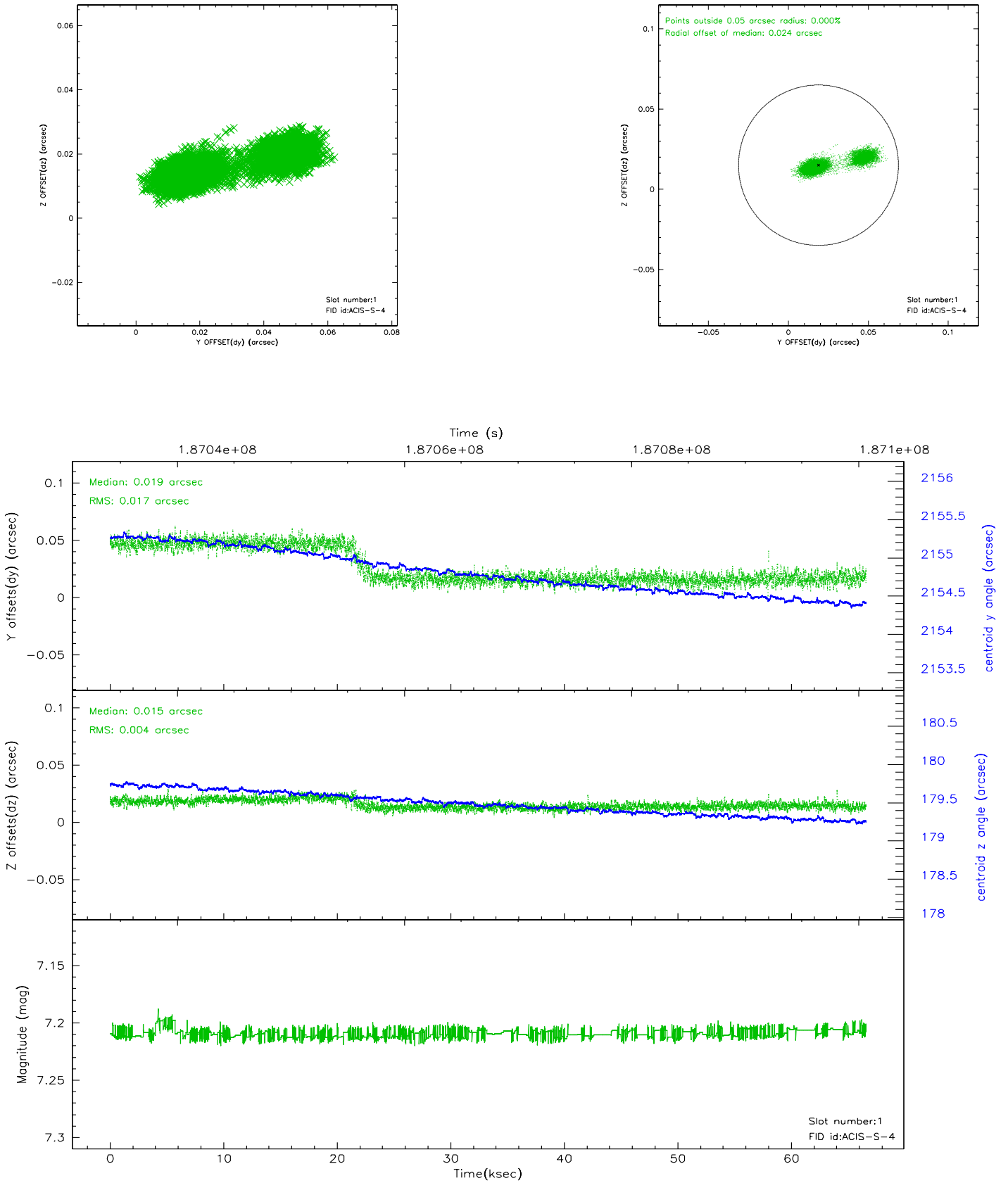


## 2.5 FID Slots

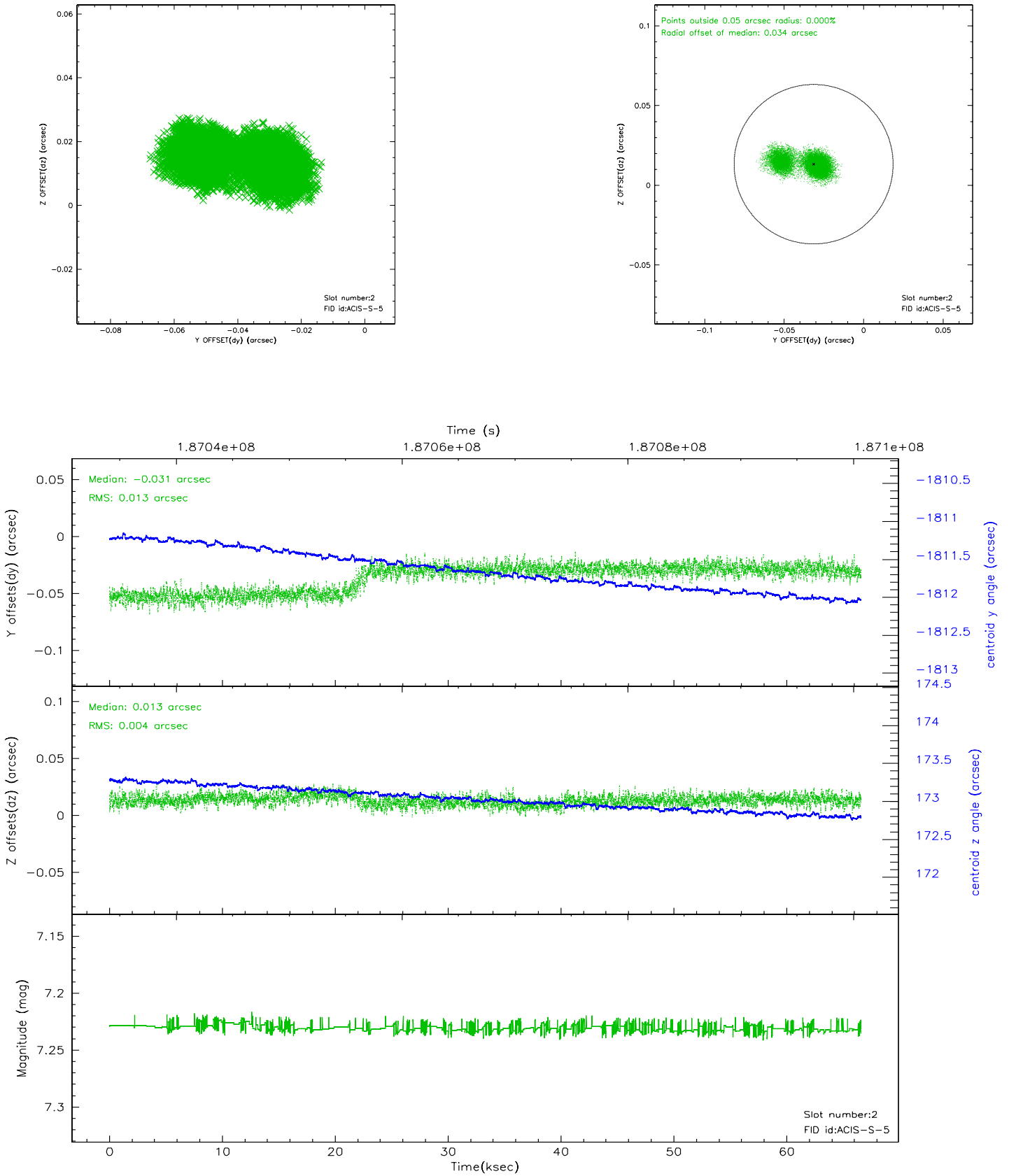
### 2.5.1 Slot 0



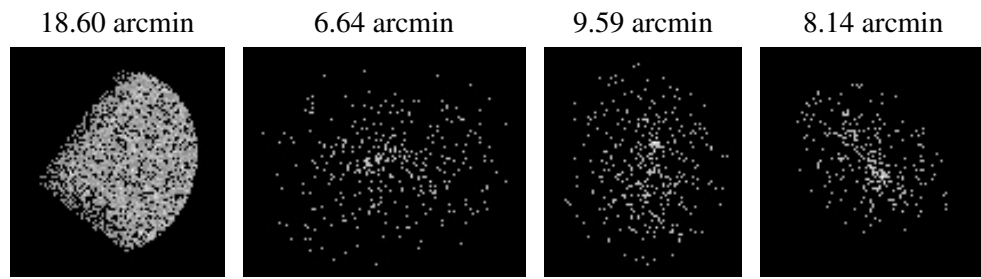
## 2.5.2 Slot 1



### 2.5.3 Slot 2



### 3 Point Sources



## A Summary

### A.1 Status

V&V Scientist	Jen Lauer
V&V Date (YYYY-MM-DD)	2006.06.23
V&V Edition	1
V&V Disposition and Status	OK
V&V Charge Time	66.494

### A.2 Comments

The ACIS focal plane temperature increases by more than a degree during the observation.