

# V&V Reference Report

## L2 ASCDS Version : 7.6.7.1

Observation 4508 - L2 Version 001  
Chandra X-Ray Center

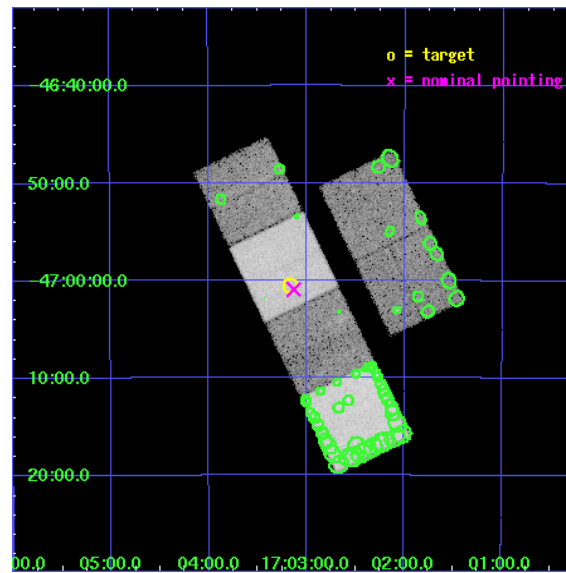
L2 Processing Date : Apr 13 2006

## Contents

<b>1</b>	<b>Front</b>	<b>2</b>
<b>2</b>	<b>OBI</b>	<b>3</b>
2.1	OBI . . . . .	3
2.1.1	Images . . . . .	3
2.1.2	Bias . . . . .	3
2.1.3	Parameters . . . . .	4
2.1.4	Events . . . . .	4
2.2	Compared Parameters . . . . .	5
2.3	Aspect . . . . .	6
2.4	Star Slots . . . . .	9
2.4.1	Slot 3 . . . . .	9
2.4.2	Slot 4 . . . . .	10
2.4.3	Slot 5 . . . . .	11
2.4.4	Slot 6 . . . . .	12
2.4.5	Slot 7 . . . . .	13
2.5	FID Slots . . . . .	14
2.5.1	Slot 0 . . . . .	14
2.5.2	Slot 1 . . . . .	15
2.5.3	Slot 2 . . . . .	16
<b>3</b>	<b>Point Sources</b>	<b>17</b>
<b>A</b>	<b>Summary</b>	<b>18</b>
A.1	Status . . . . .	18
A.2	Comments . . . . .	18

# 1 Front

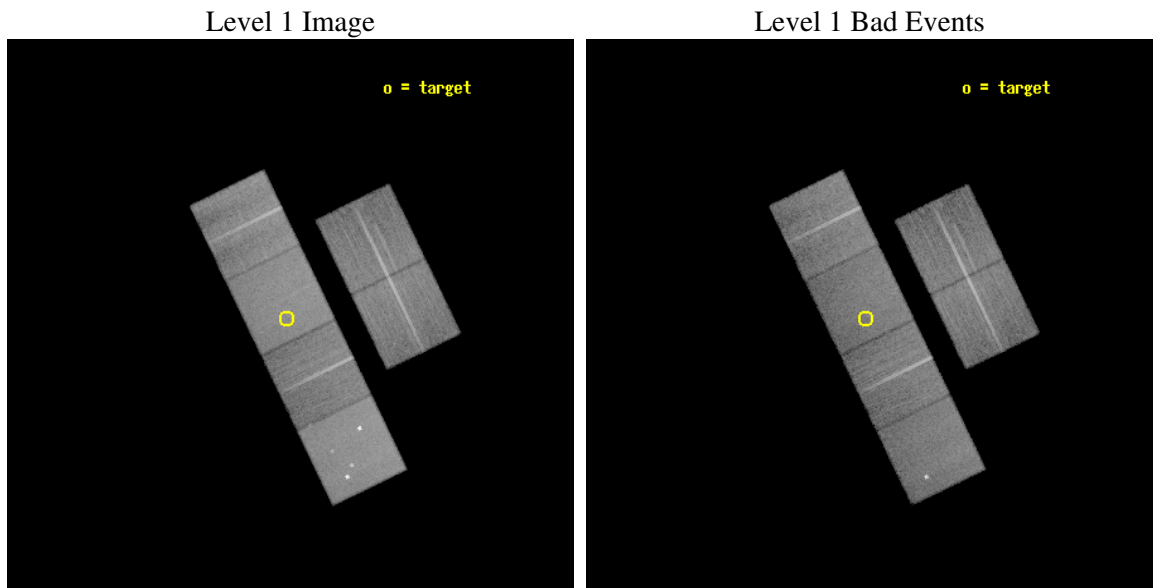
seq_num	200277
obs_id	4508
title	Wind-Wind Interactions and Stellar Magnetic Fields in Pre-Planetary Nebulae
observer	Dr. Raghvendra Sahai
object	IRAS16594-4656
dtcycle	0
cycle	P
ra_targ	255.790417
dec_targ	-47.007778
ra_nom	255.78215427995
dec_nom	-47.015575864161
roll_nom	244.1505897627
revision	2
ontime	20278.399924457
livetime	20021.622614427
ontime2	20278.399924457
ontime3	20278.399924457
ontime5	20278.399924457
ontime6	20278.399924457
ontime7	20278.399924457
ontime8	20278.399924457
l2events	253494



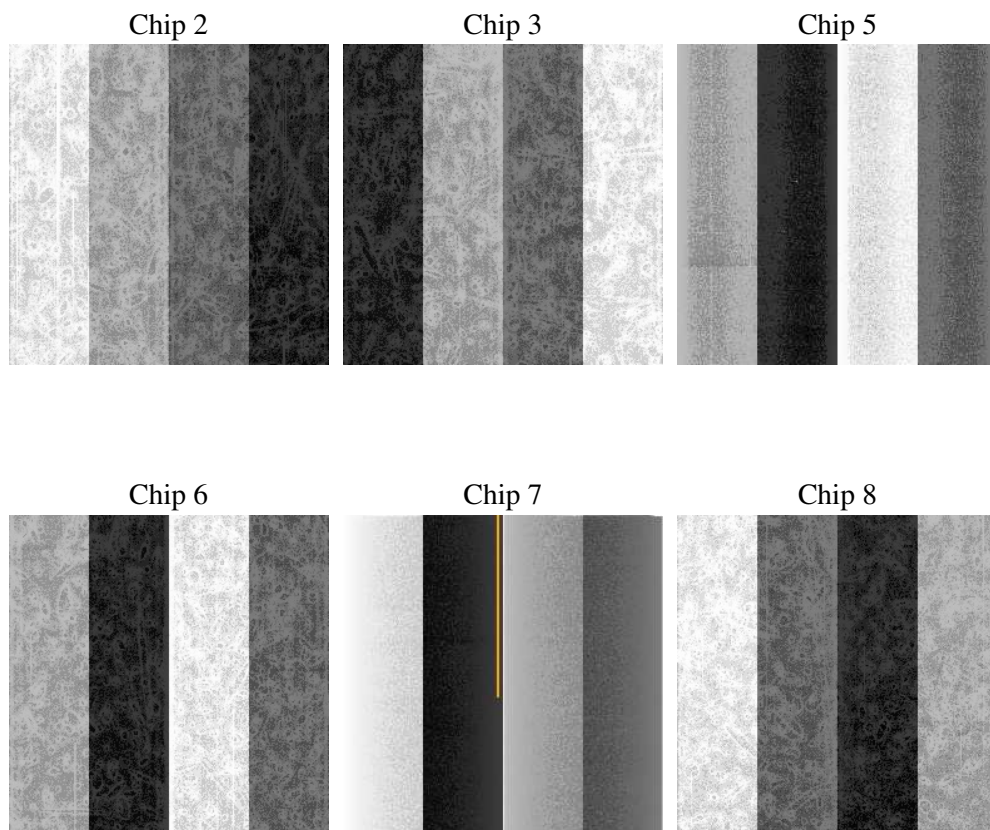
## 2 OBI

### 2.1 OBI

#### 2.1.1 Images



#### 2.1.2 Bias



### 2.1.3 Parameters

obi_num	0
ascdsver	7.6.7.1
caldsver	3.2.1
date	2006-04-13T08:32:45
revision	2

sched_exp_time	20120.000000
ontime	20936.86234805
ontime2	20936.86234805
ontime3	20936.86234805
ontime5	20936.862367988
ontime6	20936.86234805
ontime7	20936.86234805
ontime8	20936.86234805
l1events	1204457

### 2.1.4 Events

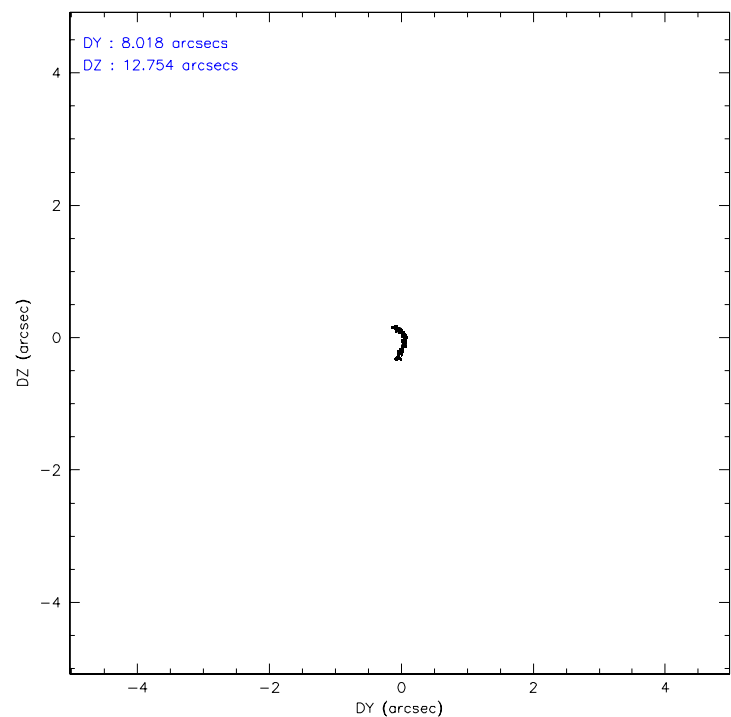
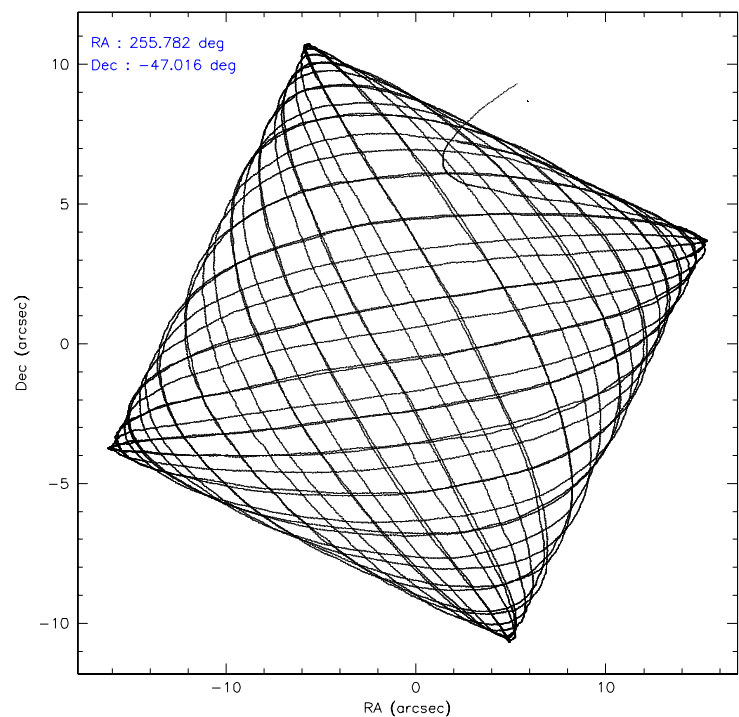
	ccd 2	ccd 3	ccd 5	ccd 6	ccd 7	ccd 8
level 1 events	175151	165925	258169	168937	225537	210738
rejected events	155767	147421	144747	148953	141688	167120
rejected %	88%	88%	56%	88%	62%	79%

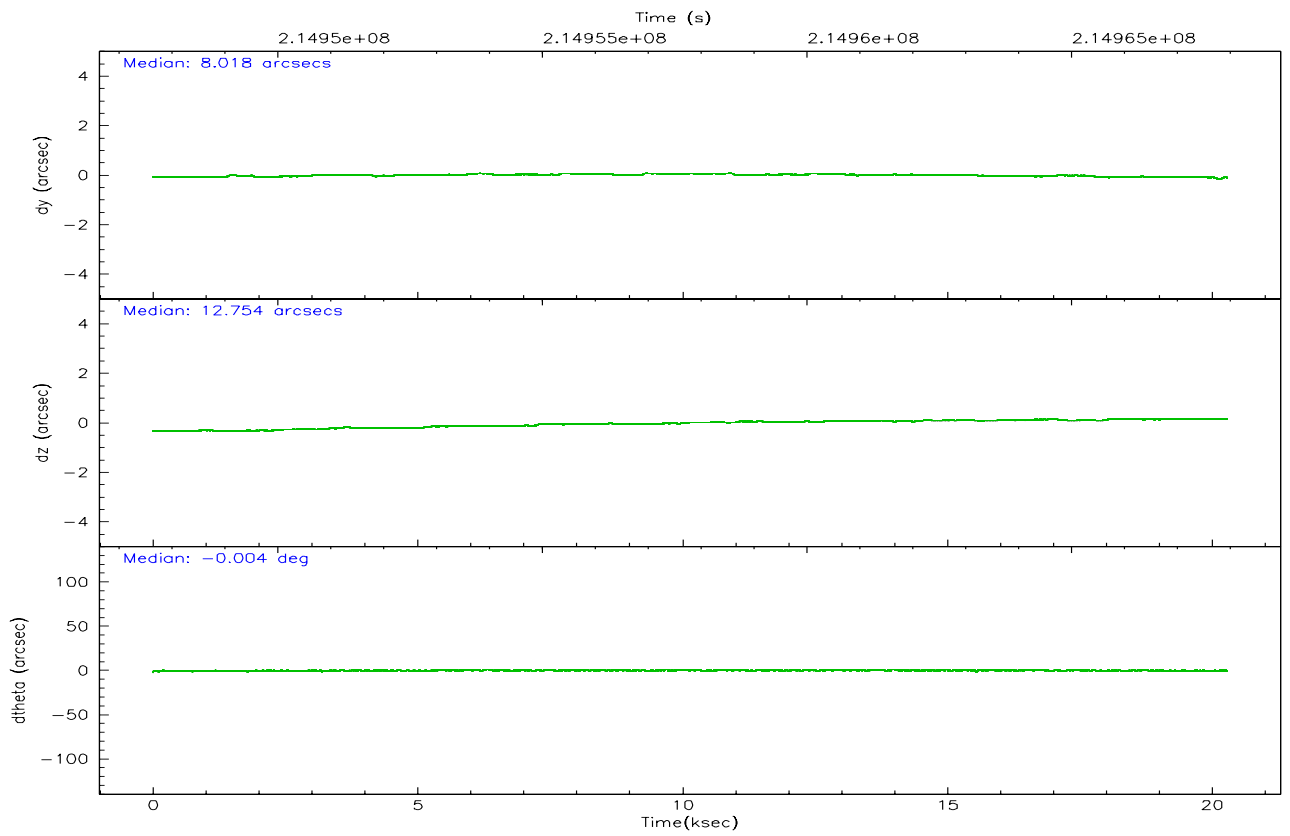
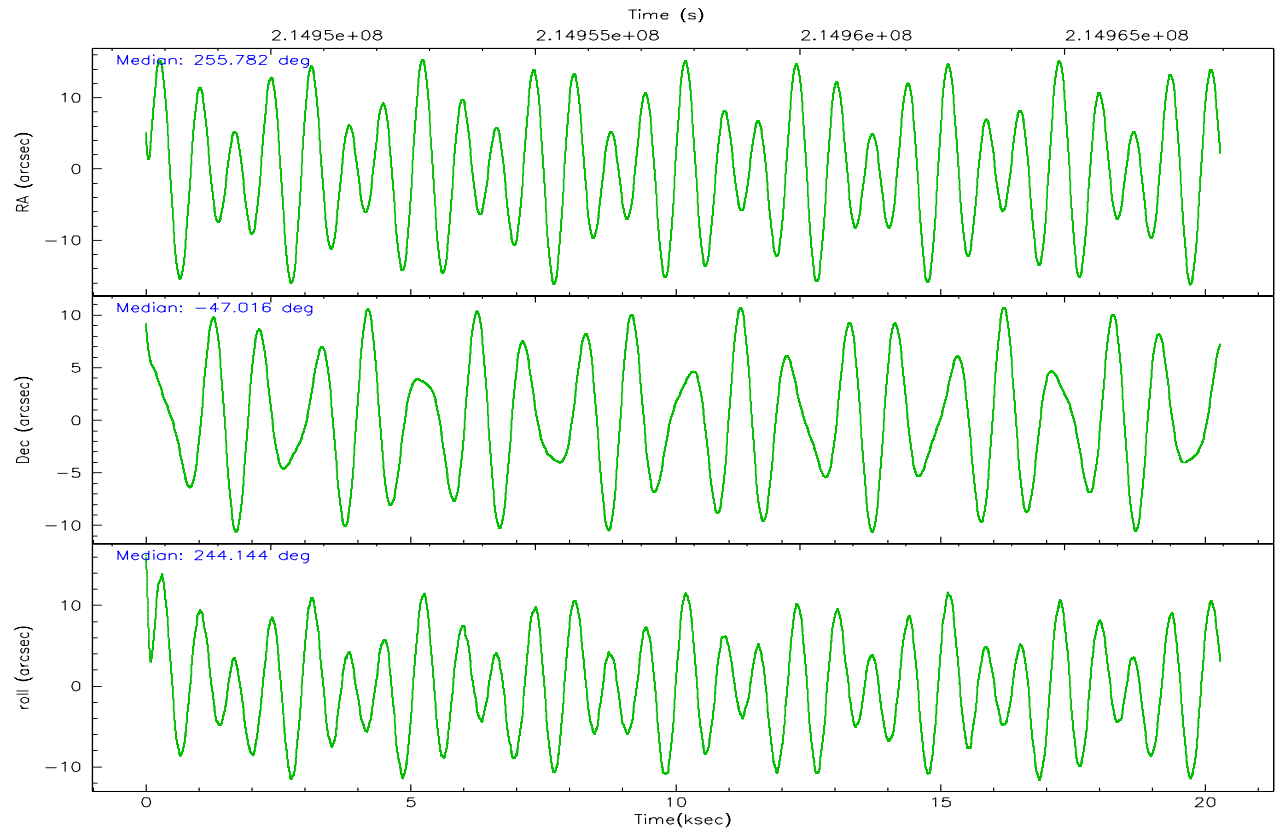
	ccd 2	ccd 3	ccd 5	ccd 6	ccd 7	ccd 8
grade 0 events	9230	8446	13253	8391	4742	14235
	5%	5%	5%	4%	2%	6%
grade 1 events	99	108	2730	87	141	143
	0%	0%	1%	0%	0%	0%
grade 2 events	4172	3582	35691	4171	21611	9895
	2%	2%	13%	2%	9%	4%
grade 3 events	1800	1886	2496	1966	4355	4867
	1%	1%	0%	1%	1%	2%
grade 4 events	1901	1942	2488	1984	4167	4526
	1%	1%	0%	1%	1%	2%
grade 5 events	6612	7341	12126	7865	14999	9933
	3%	4%	4%	4%	6%	4%
grade 6 events	3226	3278	63273	4122	51706	11424
	1%	1%	24%	2%	22%	5%
grade 7 events	148111	139342	126112	140351	123816	155715
	84%	83%	48%	83%	54%	73%

## 2.2 Compared Parameters

Parameter	Planned	Actual	Parameter	Planned	Actual
Instrument	ACIS	ACIS	Obspar format version number	6	6
Detector	ACIS-235678	ACIS-235678	Obspar file type	PREDICTED	ACTUAL
Grating	NONE	NONE	Obspar update status	NONE	UPDATED
Data mode	FAINT	FAINT	On-chip summing requested	N	N
Observation mode	POINTING	POINTING	Subarray requested	NONE	NONE
Pointing RA	255.778665	255.7821542799506	Alternating exposures requested	N	N
Pointing Dec	-46.988471	-47.01557586416063	Primary exposure time	0.000000	3.2
Pointing Roll	243.991412	244.1505897627038			
SIM focus pos (mm)	-0.684267	-0.6828225247311905			
SIM defocus (mm)	0	0.001444936568705701			
SIM translation stage pos (mm)	-190.132523	-190.1400660498719			
SIM translation stage offset (mm)	0	0.00754346686406393			
Observation start time	214947810.184000	214946420.19339			
Observation start date	2004-10-23T19:42:26	2004-10-23T19:20:20			
Observation end time	214967930.184000	214968825.15689			
Observation end date	2004-10-24T01:17:46	2004-10-24T01:33:45			
Read mode	TIMED	TIMED			

2.3 Aspect





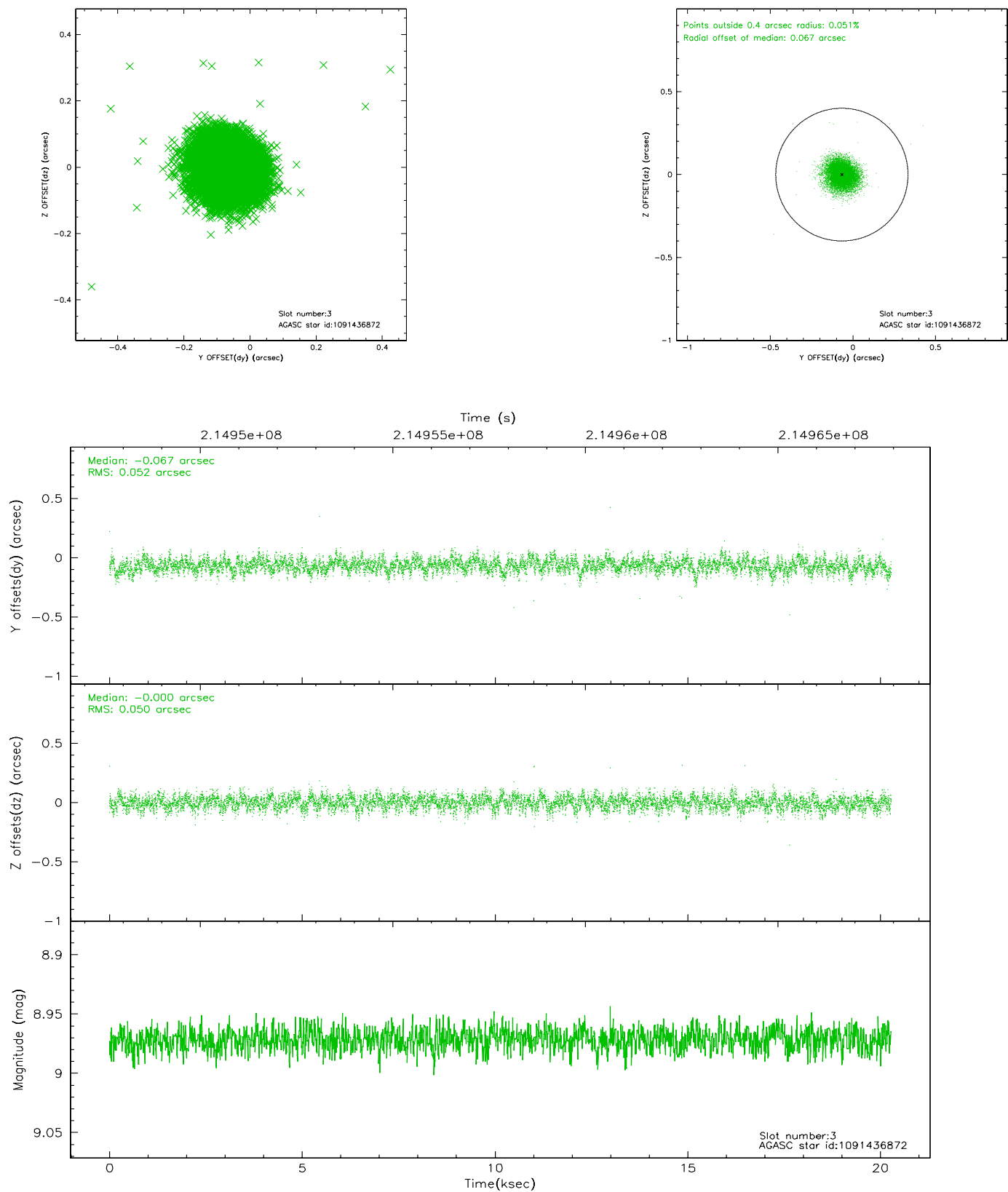
### Slot Statistics

slot	status	id	mag	n_pts	med_dy	med_dz	dr1	dr2	ra	dec	mean_y	mean_z
0	FID	ACIS-S-2	7.10	4949	0.013	-0.004	0.010	0.022	0.000000	0.000000	-760.79	-1734.03
1	FID	ACIS-S-4	7.19	4949	0.017	-0.005	0.008	0.024	0.000000	0.000000	2152.43	174.24
2	FID	ACIS-S-5	7.23	4949	-0.062	0.018	0.009	0.017	0.000000	0.000000	-1813.46	168.17
3	GUIDE	1091436872	8.97	9890	-0.067	-0.000	0.076	0.123	255.728542	-46.511740	-1487.65	-864.10
4	GUIDE	1091578616	7.19	9894	-0.171	0.121	0.073	0.116	256.896475	-46.679685	-2192.21	2001.99
5	GUIDE	1091962048	9.34	9891	0.123	-0.022	0.088	0.145	255.249687	-47.258259	1443.80	-733.16
6	GUIDE	1091963760	8.82	9895	0.201	-0.221	0.108	0.173	254.534918	-47.241344	2173.75	-2321.96
7	GUIDE	1091568688	9.20	9888	-0.090	0.127	0.100	0.166	257.031467	-46.735947	-2150.05	2390.07

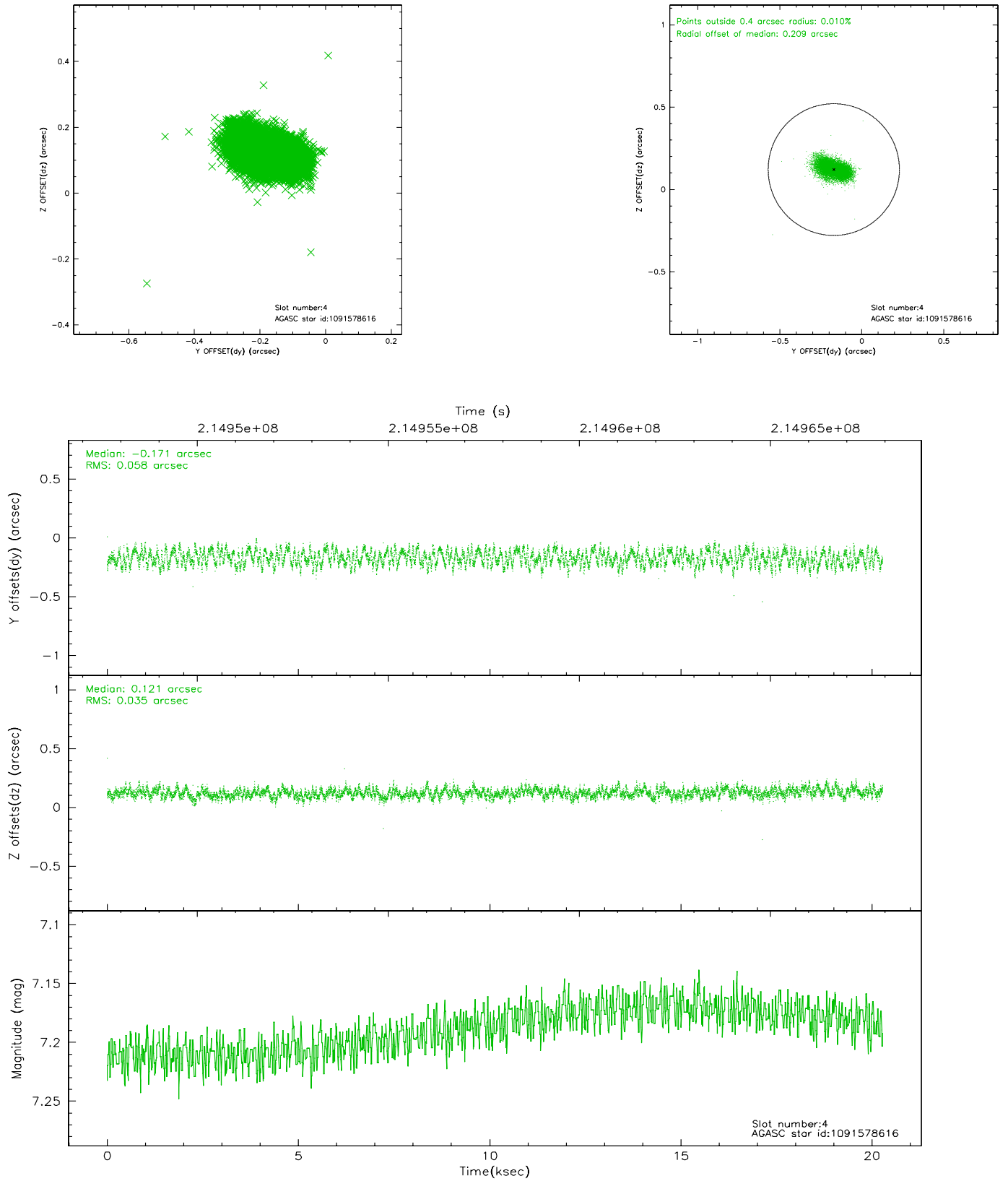


## 2.4 Star Slots

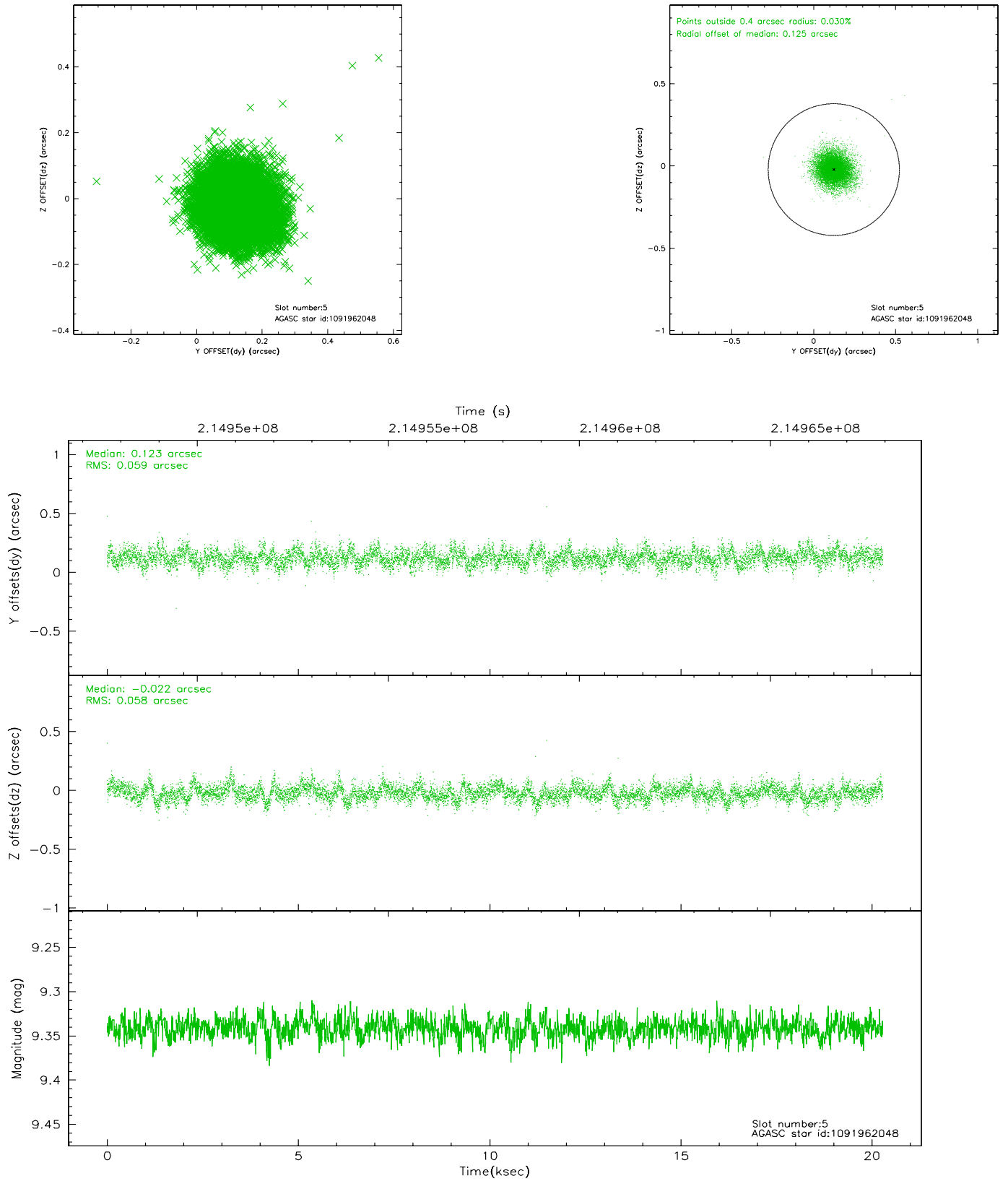
### 2.4.1 Slot 3



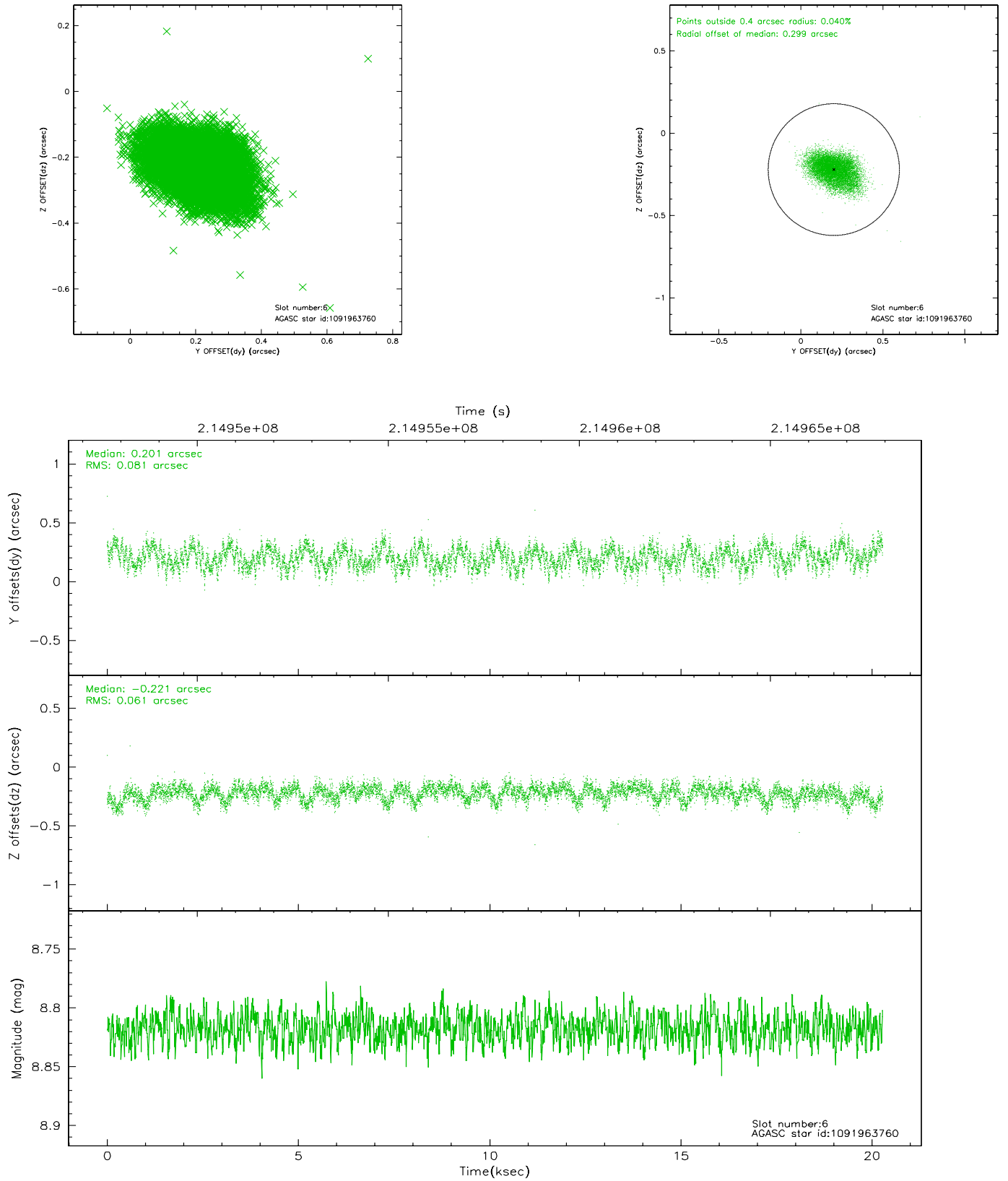
## 2.4.2 Slot 4



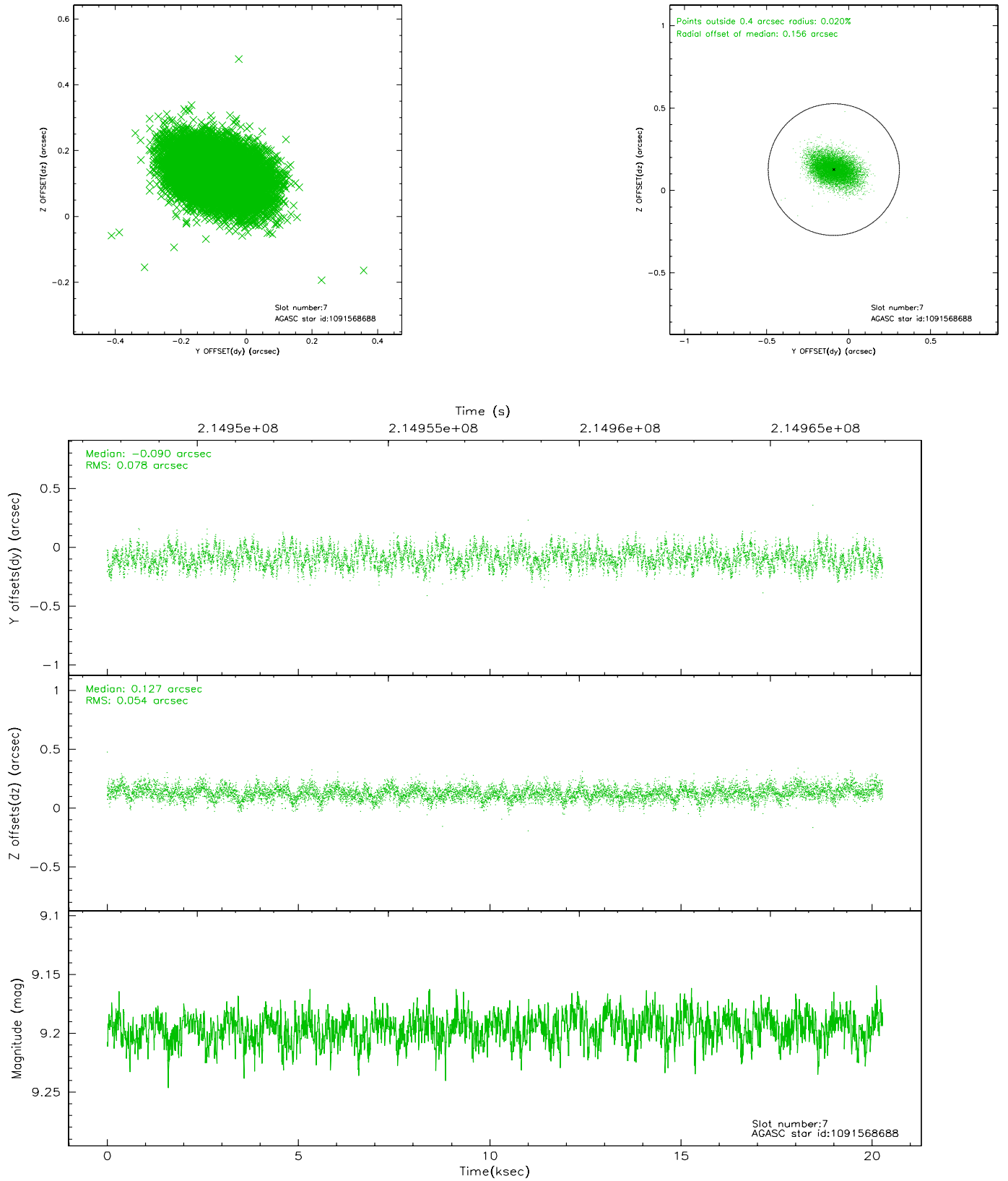
### 2.4.3 Slot 5



## 2.4.4 Slot 6

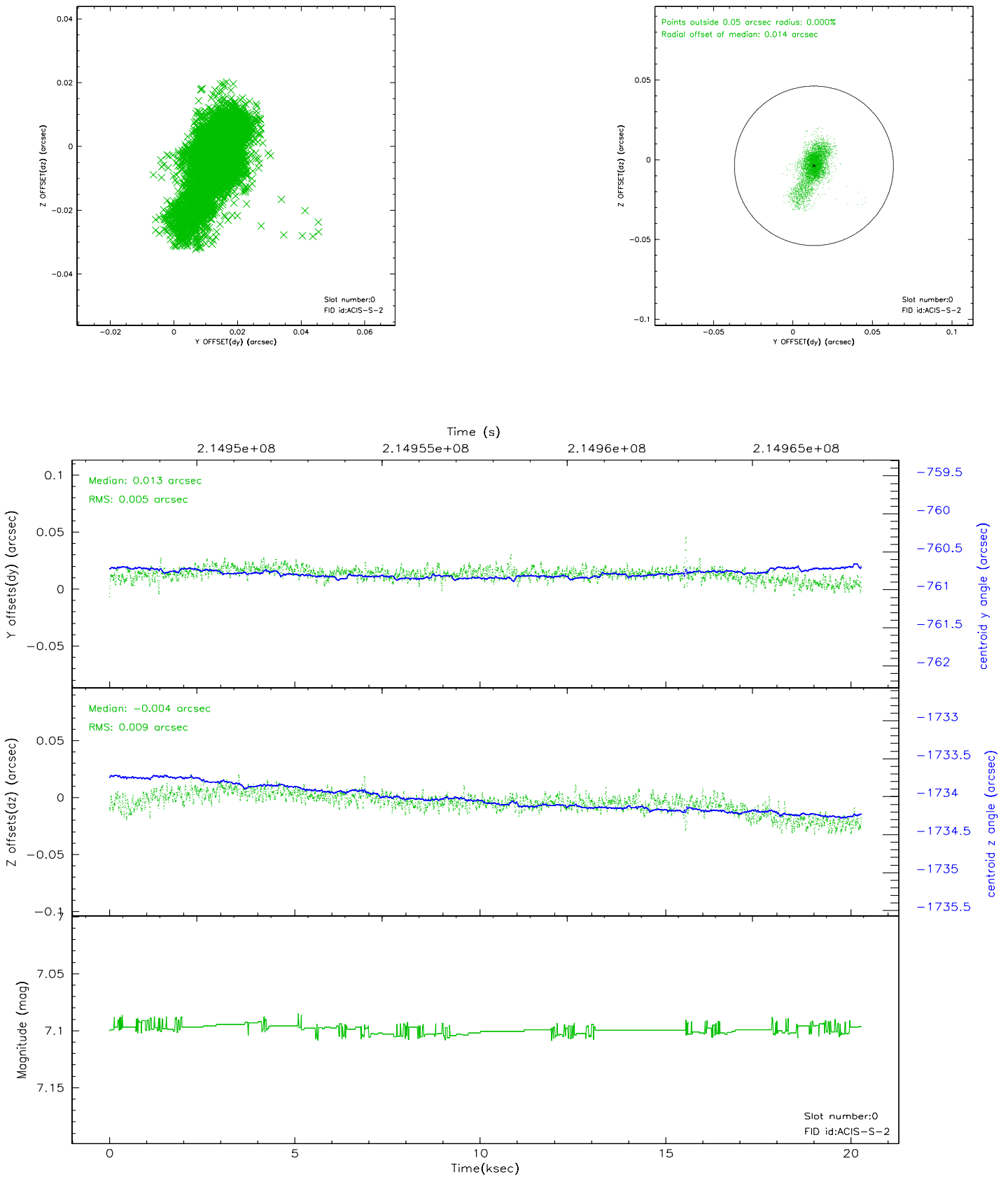


## 2.4.5 Slot 7

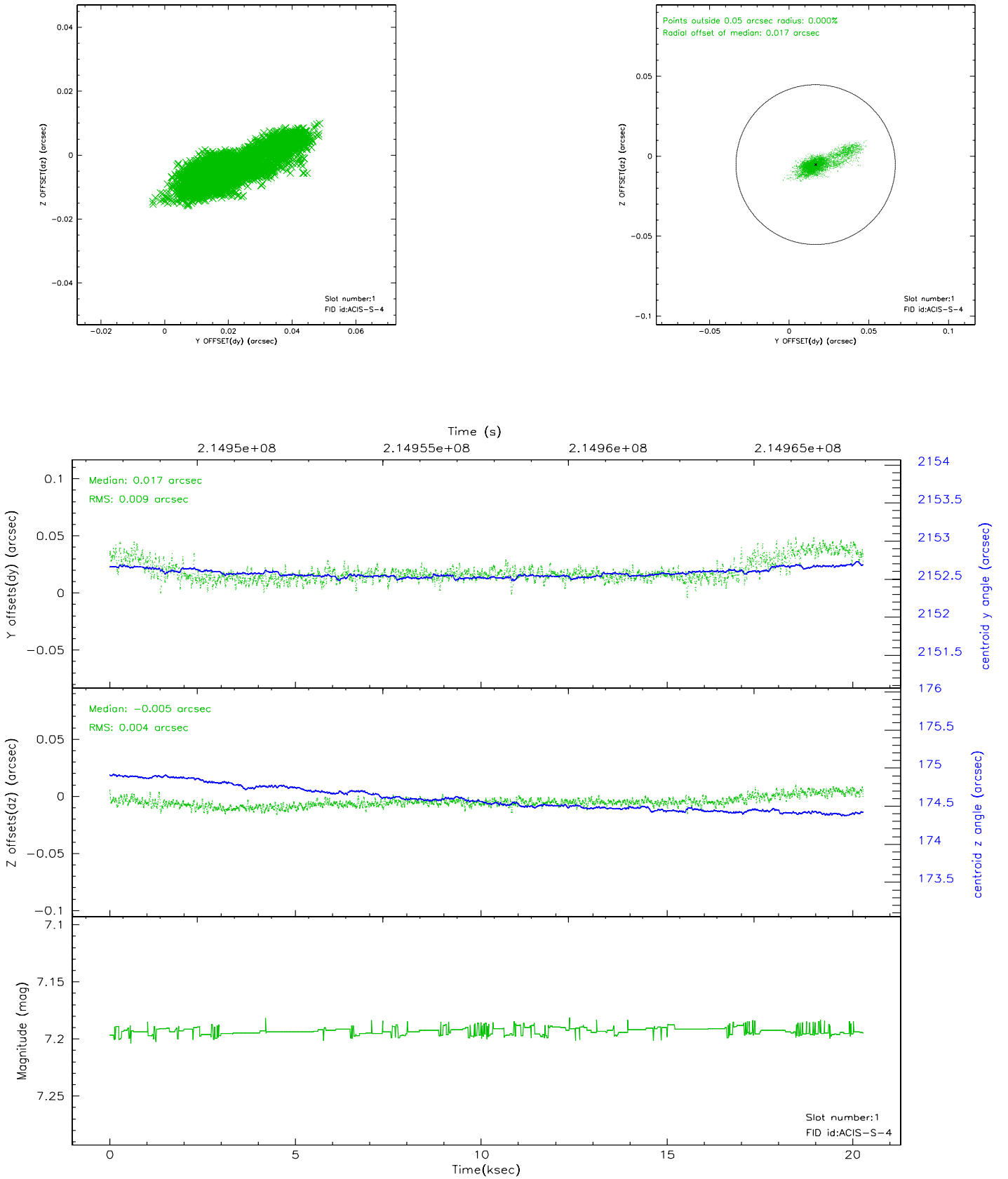


## 2.5 FID Slots

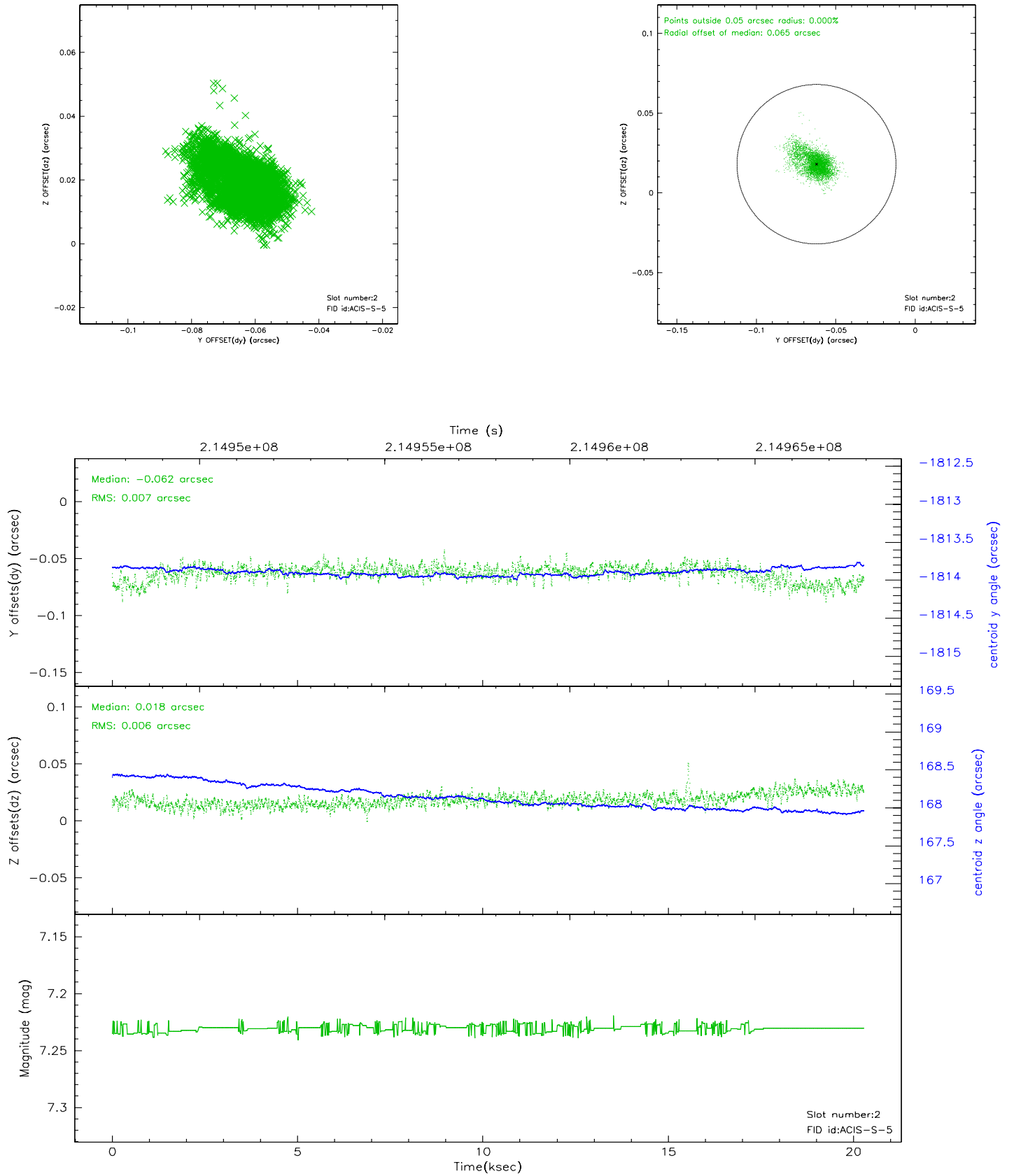
### 2.5.1 Slot 0



## 2.5.2 Slot 1

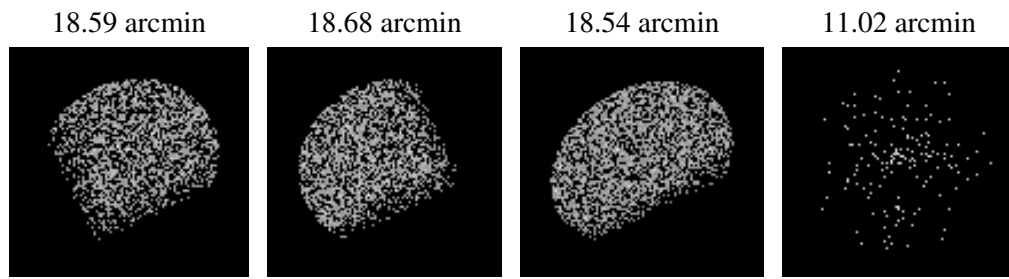


### 2.5.3 Slot 2





### 3 Point Sources



## A Summary

### A.1 Status

V&V Scientist	Jen Lauer
V&V Date (YYYY-MM-DD)	2006.04.13
V&V Edition	1
V&V Disposition and Status	OK
V&V Charge Time	20.278

### A.2 Comments