

V&V Reference Report

L2 ASCDS Version : 7.6.8

Observation 4488 - L2 Version 001
Chandra X-Ray Center

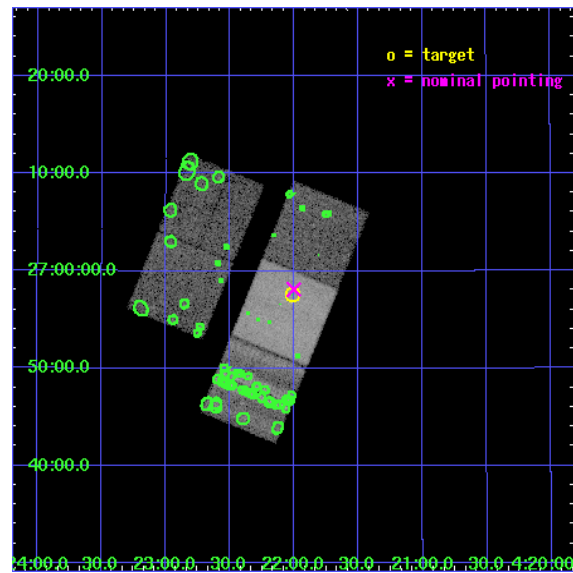
L2 Processing Date : Jun 30 2006

Contents

1	Front	2
2	OBI	3
2.1	OBI	3
2.1.1	Images	3
2.1.2	Bias	3
2.1.3	Parameters	4
2.1.4	Events	4
2.2	Compared Parameters	5
2.3	Aspect	6
2.4	Star Slots	9
2.4.1	Slot 3	9
2.4.2	Slot 4	10
2.4.3	Slot 5	11
2.4.4	Slot 6	12
2.4.5	Slot 7	13
2.5	FID Slots	14
2.5.1	Slot 0	14
2.5.2	Slot 1	15
2.5.3	Slot 2	16
3	Point Sources	17
A	Summary	18
A.1	Status	18
A.2	Comments	18

1 Front

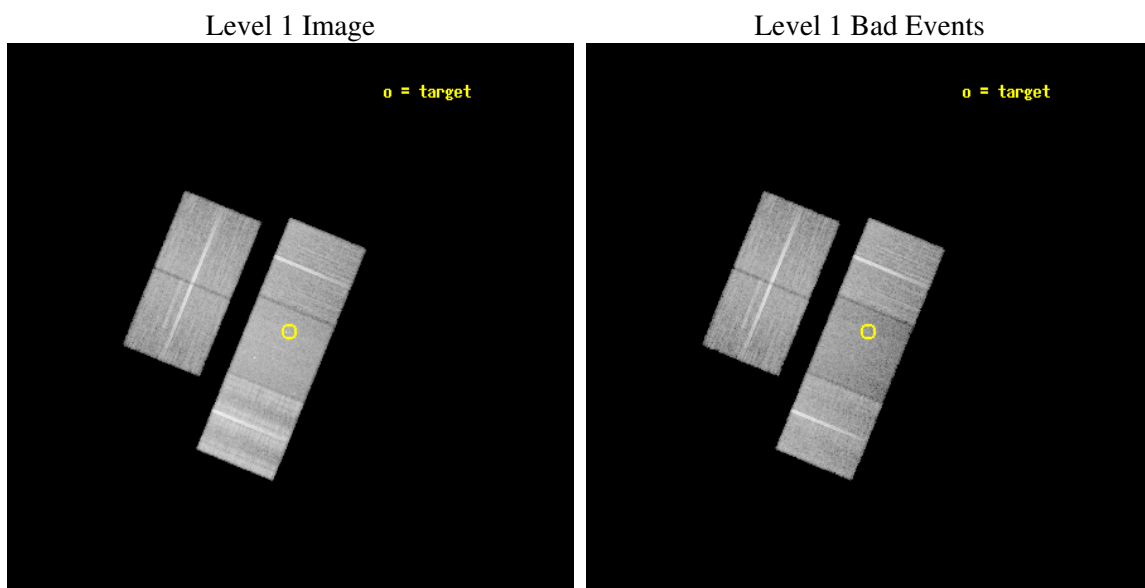
seq_num	200257
obs_id	4488
title	SHOCKS AND X-RAYS IN PROTOSTELLAR JETS
observer	Dr. Manuel Guedel
object	FS Tau AB
dtcycle	0
cycle	P
ra_targ	65.502917
dec_targ	26.95925
ra_nom	65.500616916223
dec_nom	26.968675946254
roll_nom	112.24983527783
revision	2
ontime	30066.899942189
livetime	29674.053759515
ontime2	30063.758961946
ontime3	30060.617961794
ontime6	30063.758961946
ontime7	30066.899942189
ontime8	30060.617971718
l2events	143678



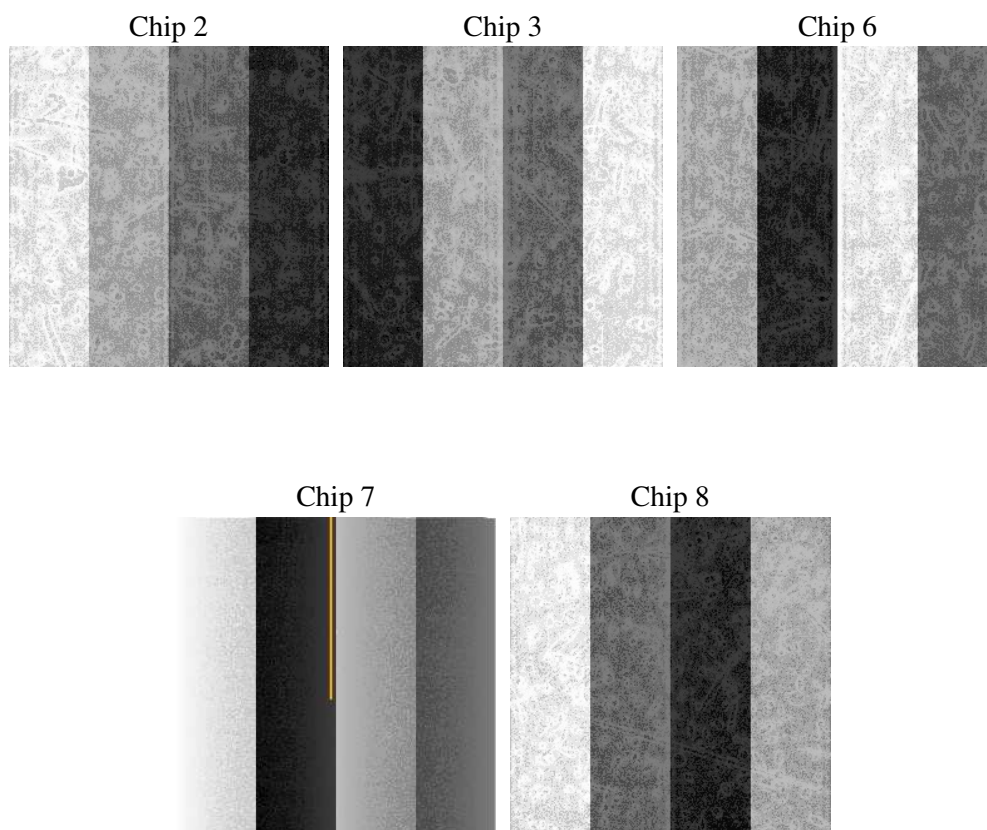
2 OBI

2.1 OBI

2.1.1 Images



2.1.2 Bias



2.1.3 Parameters

obi_num	1
ascdsver	7.6.8
caldbver	3.2.2
date	2006-06-30T10:43:03
revision	2

sched_exp_time	30000.000000
ontime	31256.1803931
ontime2	30558.880165577
ontime3	30593.431526154
ontime6	30605.995417029
ontime7	31256.1803931
ontime8	30627.982707232
l1events	936345

2.1.4 Events

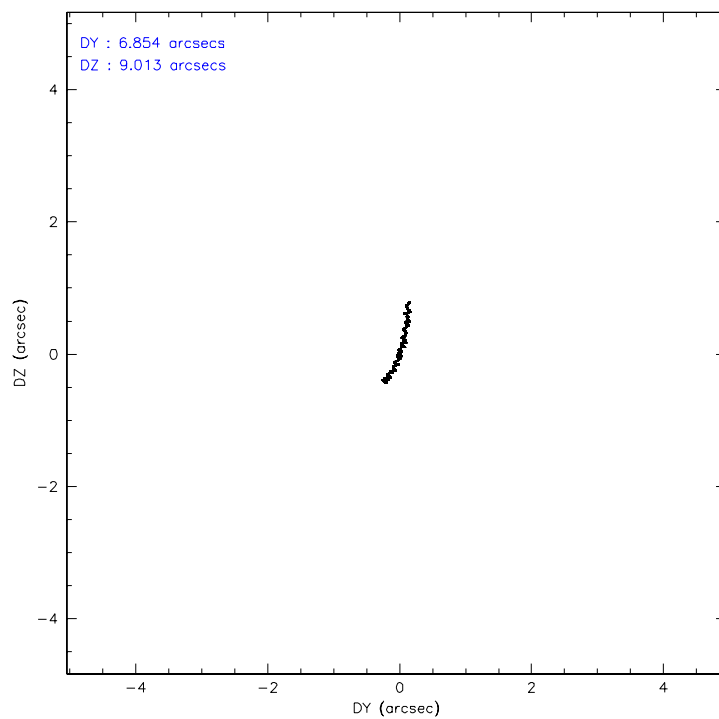
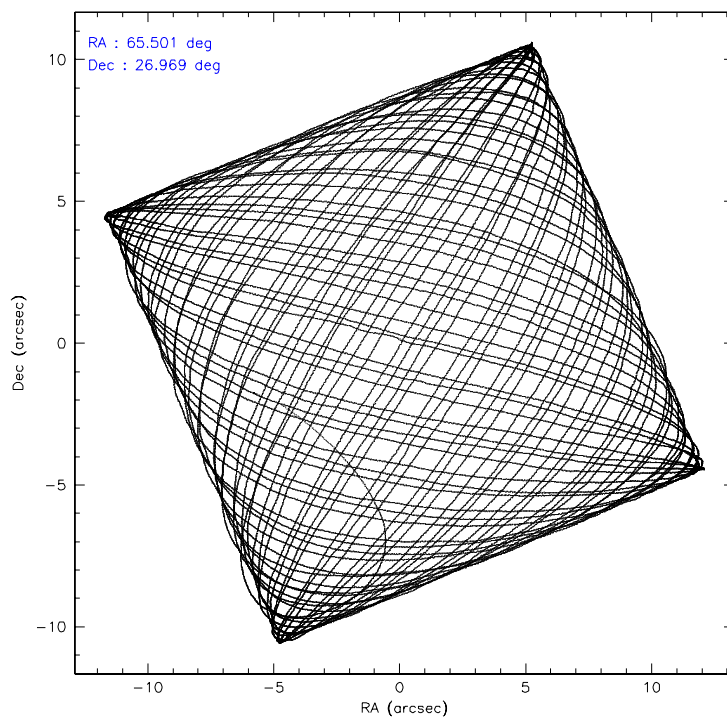
	ccd 2	ccd 3	ccd 6	ccd 7	ccd 8
level 1 events	163354	159132	166267	194006	253586
rejected events	146369	143510	147936	120678	161675
rejected %	89%	90%	88%	62%	63%

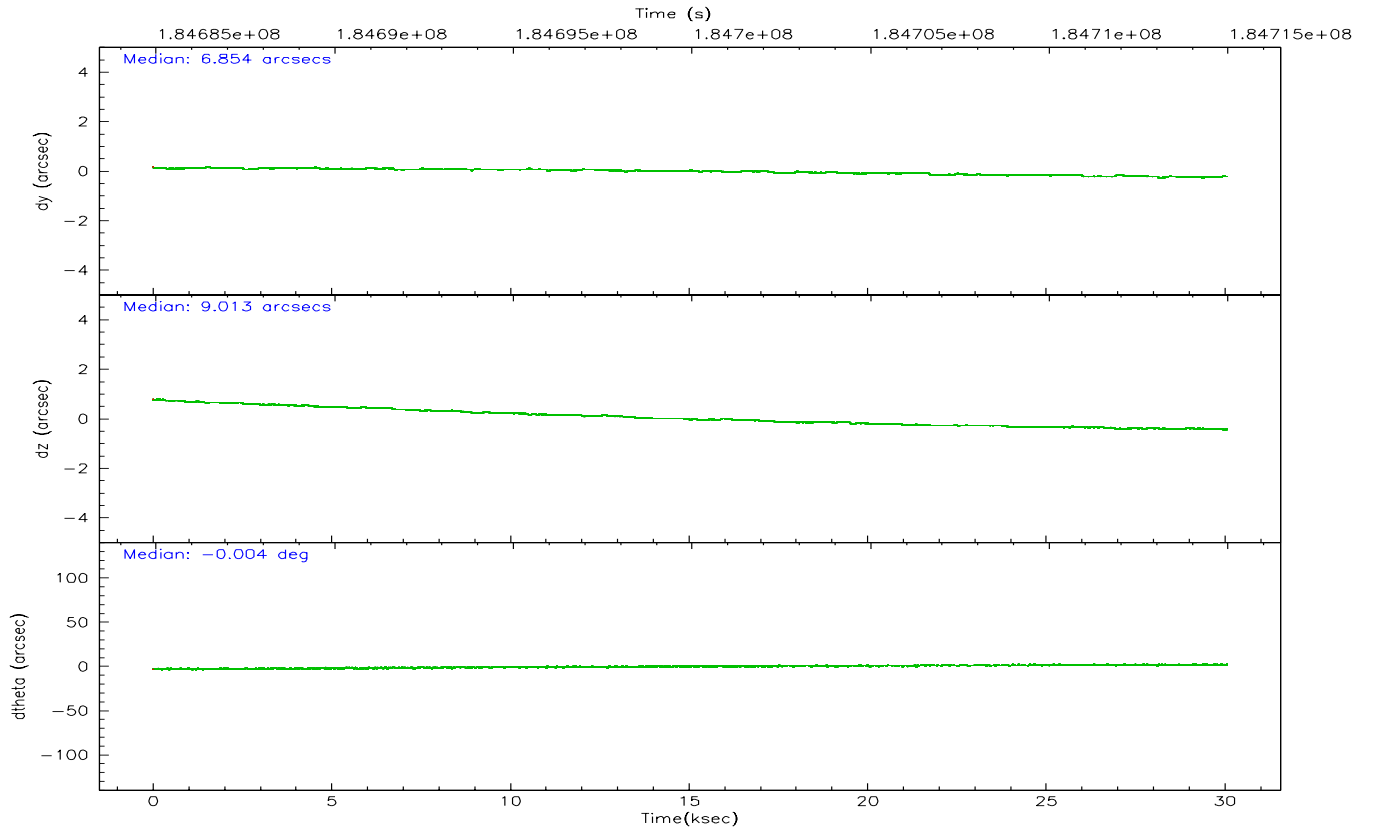
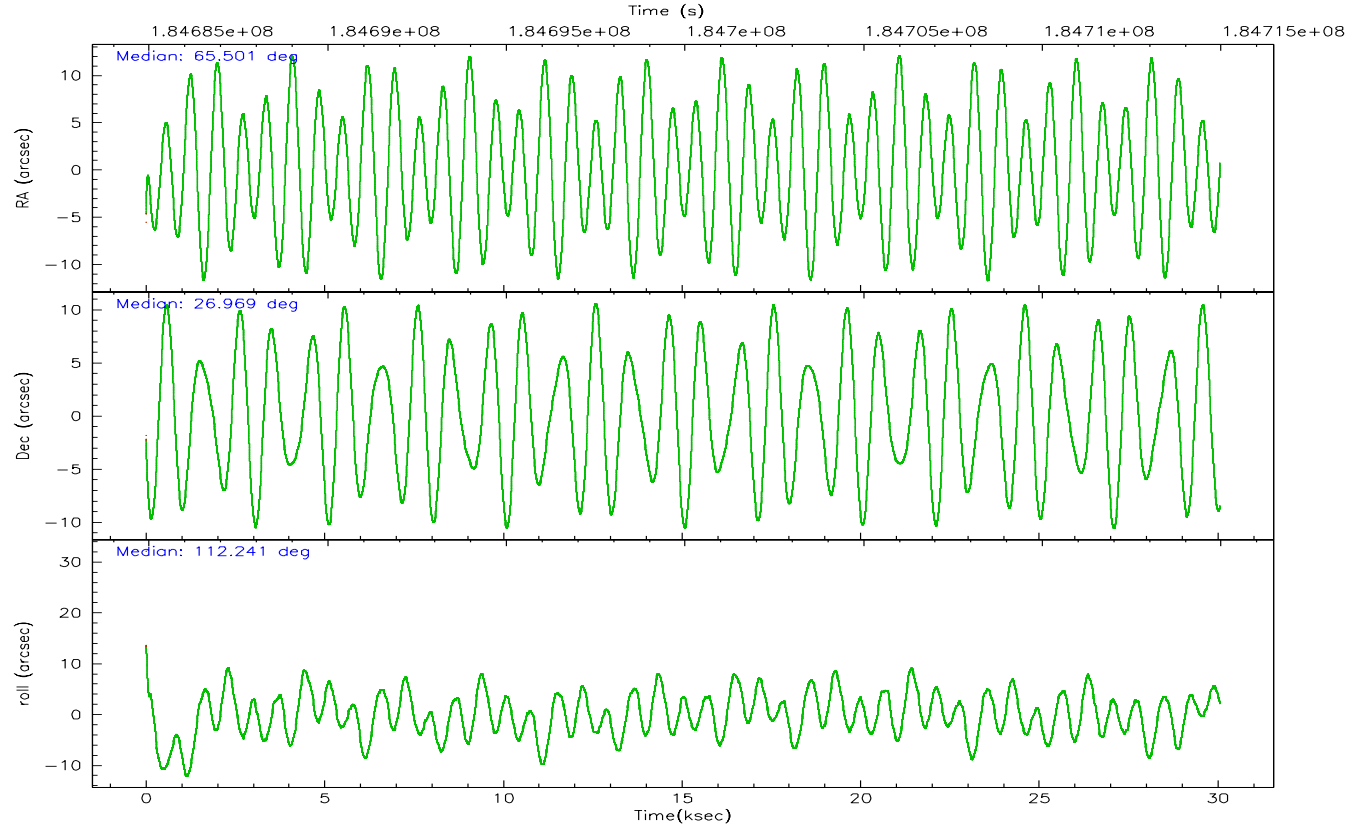
	ccd 2	ccd 3	ccd 6	ccd 7	ccd 8
grade 0 events	13073	12827	14182	9795	40600
	8%	8%	8%	5%	16%
grade 1 events	114	107	90	106	308
	0%	0%	0%	0%	0%
grade 2 events	5563	5134	5898	26602	15489
	3%	3%	3%	13%	6%
grade 3 events	2338	2442	2529	6357	16008
	1%	1%	1%	3%	6%
grade 4 events	2544	2416	2427	6428	14460
	1%	1%	1%	3%	5%
grade 5 events	4611	5631	5665	12325	8356
	2%	3%	3%	6%	3%
grade 6 events	4369	4583	5316	51439	18743
	2%	2%	3%	26%	7%
grade 7 events	130742	125992	130160	80954	139622
	80%	79%	78%	41%	55%

2.2 Compared Parameters

Parameter	Planned	Actual	Parameter	Planned	Actual
Instrument	ACIS	ACIS	Obspar format version number	6	6
Detector	ACIS-23678	ACIS-23678	Obspar file type	PREDICTED	ACTUAL
Grating	NONE	NONE	Obspar update status	NONE	UPDATED
Data mode	VFAINT	VFAINT	On-chip summing requested	N	N
Observation mode	POINTING	POINTING	Subarray requested	NONE	NONE
Pointing RA	65.525041	65.5006169162227	Alternating exposures requested	N	N
Pointing Dec	26.952327	26.96867594625408	Primary exposure time	0.000000	3.1
Pointing Roll	112.082133	112.2498352778288			
SIM focus pos (mm)	-0.684267	-0.6828225247311905			
SIM defocus (mm)	0	0.001444936568705701			
SIM translation stage pos (mm)	-190.132523	-190.1400660498719			
SIM translation stage offset (mm)	0	0.00754346686406393			
Observation start time	184684976.184000	184683478.36002			
Observation start date	2003-11-08T13:21:52	2003-11-08T12:57:58			
Observation end time	184714976.184000	184715794.56142			
Observation end date	2003-11-08T21:41:52	2003-11-08T21:56:34			
Read mode	TIMED	TIMED			

2.3 Aspect



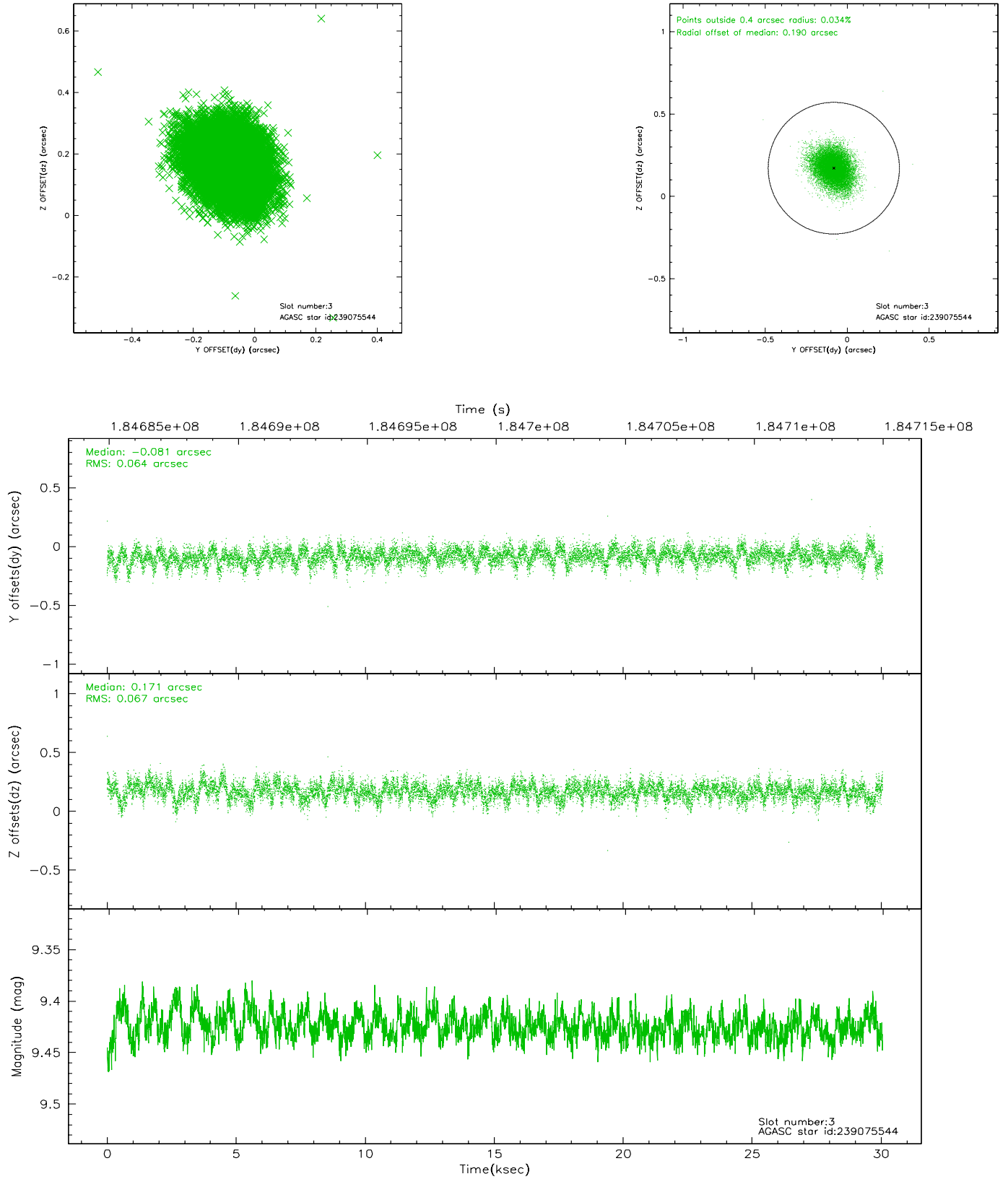


Slot Statistics

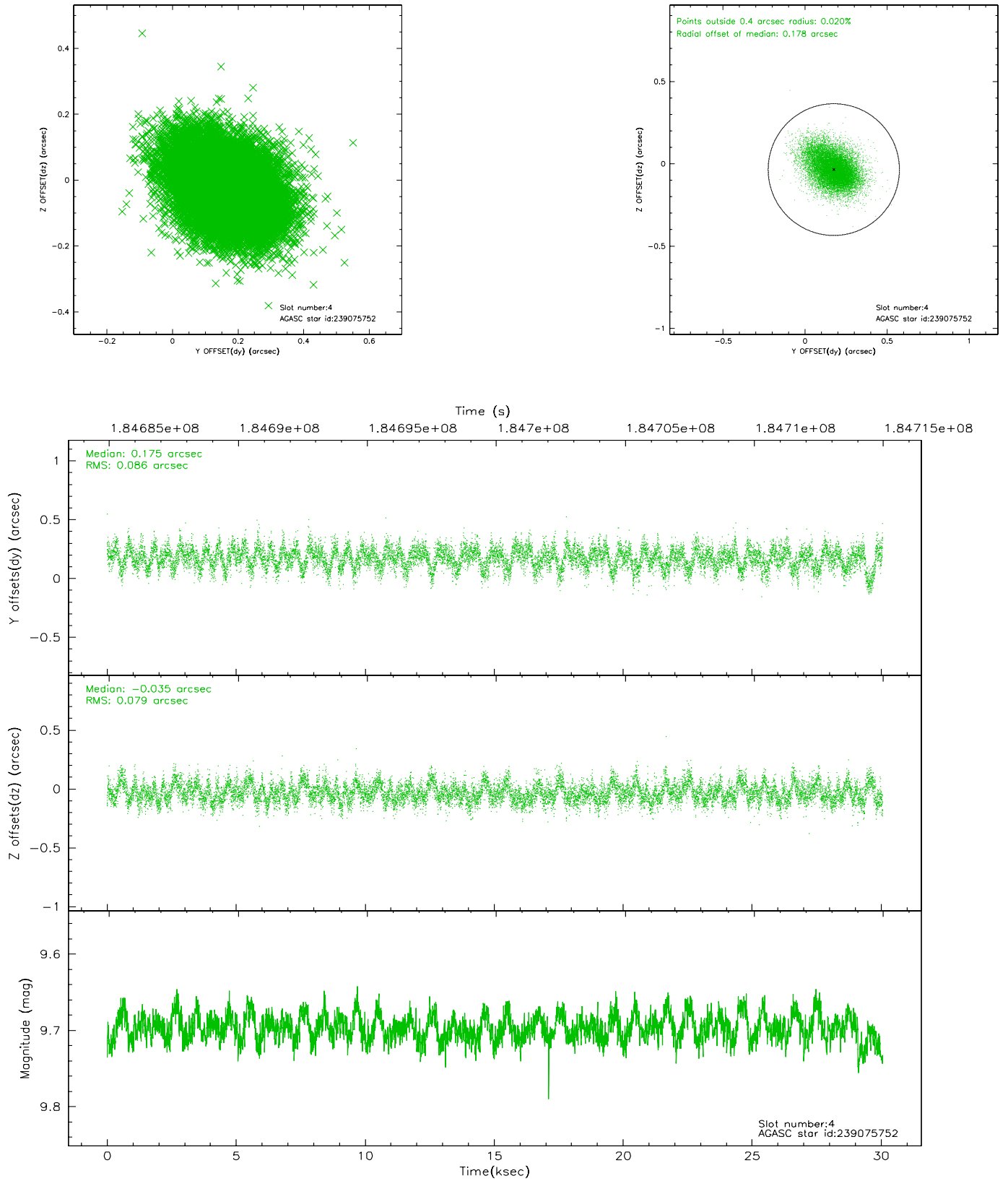
slot	status	id	mag	n_pts	med_dy	med_dz	dr1	dr2	ra	dec	mean_y	mean_z
0	FID	ACIS-S-2	7.10	7335	-0.030	-0.019	0.011	0.020	0.000000	0.000000	-759.60	-1730.31
1	FID	ACIS-S-4	7.20	7335	0.031	0.019	0.006	0.012	0.000000	0.000000	2153.70	178.15
2	FID	ACIS-S-5	7.23	7334	-0.033	0.009	0.010	0.019	0.000000	0.000000	-1812.36	171.87
3	GUIDE	239075544	9.42	14650	-0.081	0.171	0.098	0.161	65.454352	27.284696	1194.07	-239.82
4	GUIDE	239075752	9.70	14661	0.175	-0.035	0.123	0.206	65.644780	26.331316	-2216.27	482.14
5	GUIDE	239076720	7.62	14668	-0.119	-0.082	0.051	0.087	65.782214	27.230295	618.76	-1139.21
6	GUIDE	239080856	9.23	14662	0.054	-0.075	0.085	0.137	65.285900	26.367744	-1659.36	1505.39
7	GUIDE	239081136	9.96	7330	-0.054	0.046	0.175	0.275	65.934218	27.207584	361.07	-1559.91

2.4 Star Slots

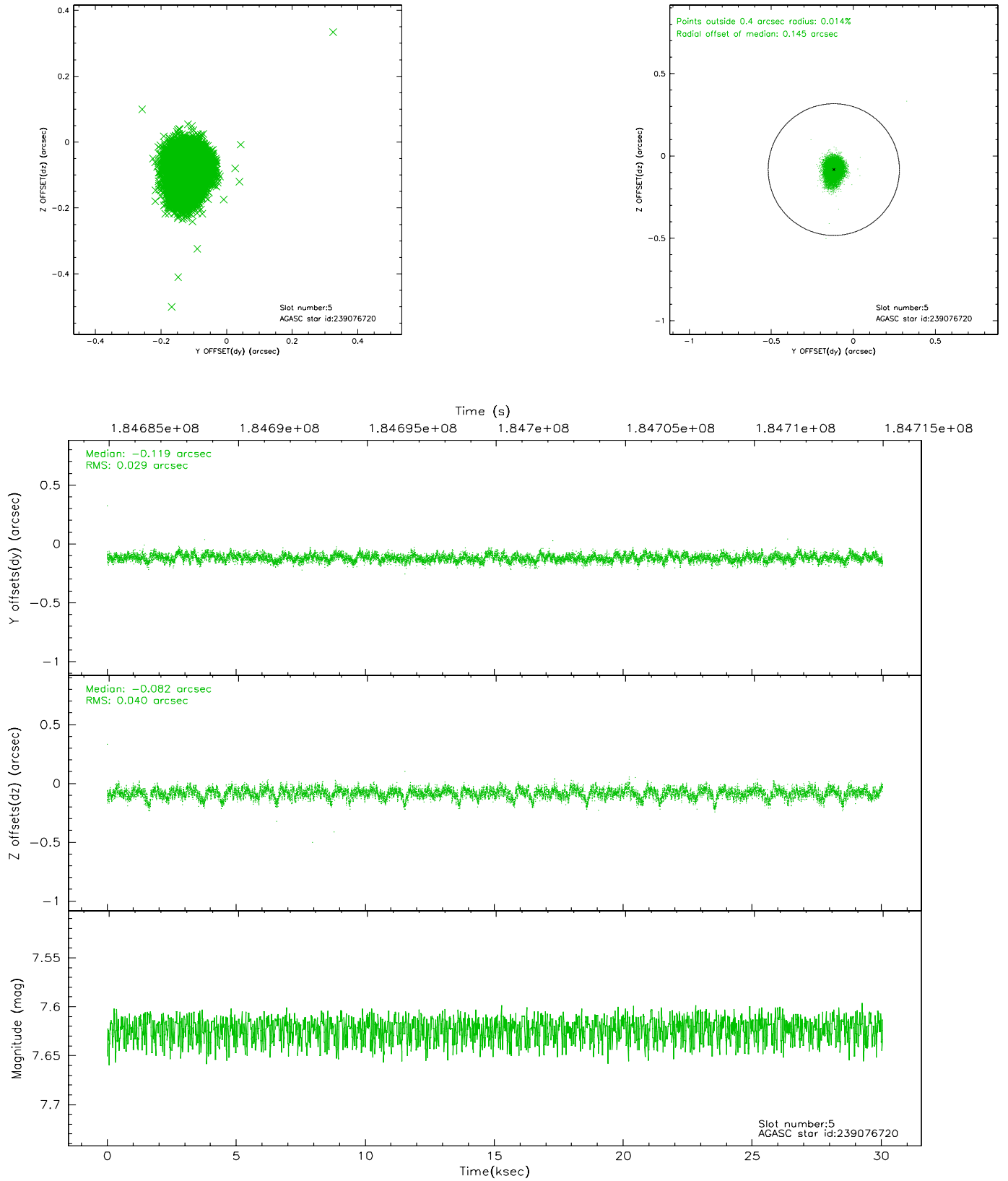
2.4.1 Slot 3



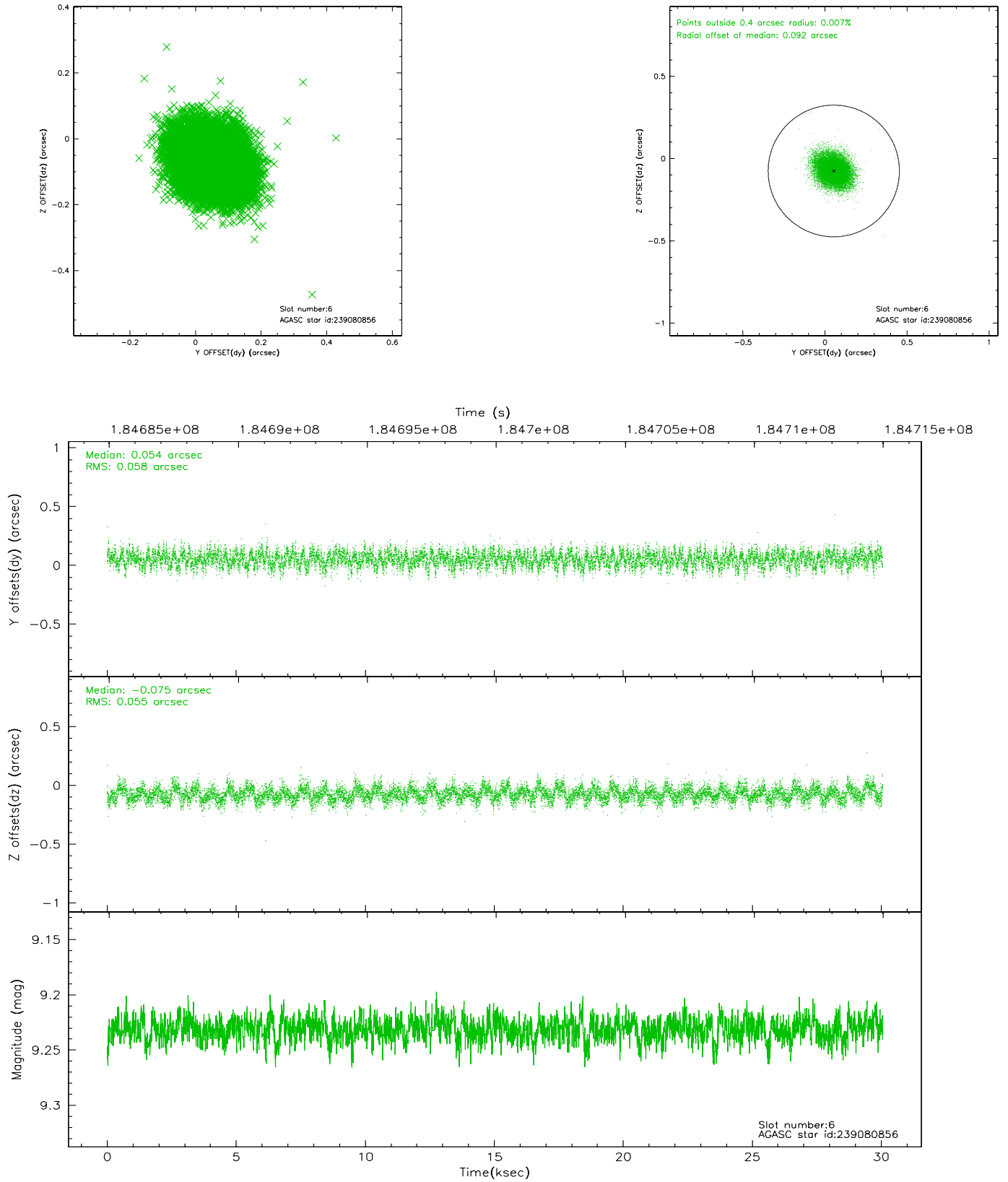
2.4.2 Slot 4



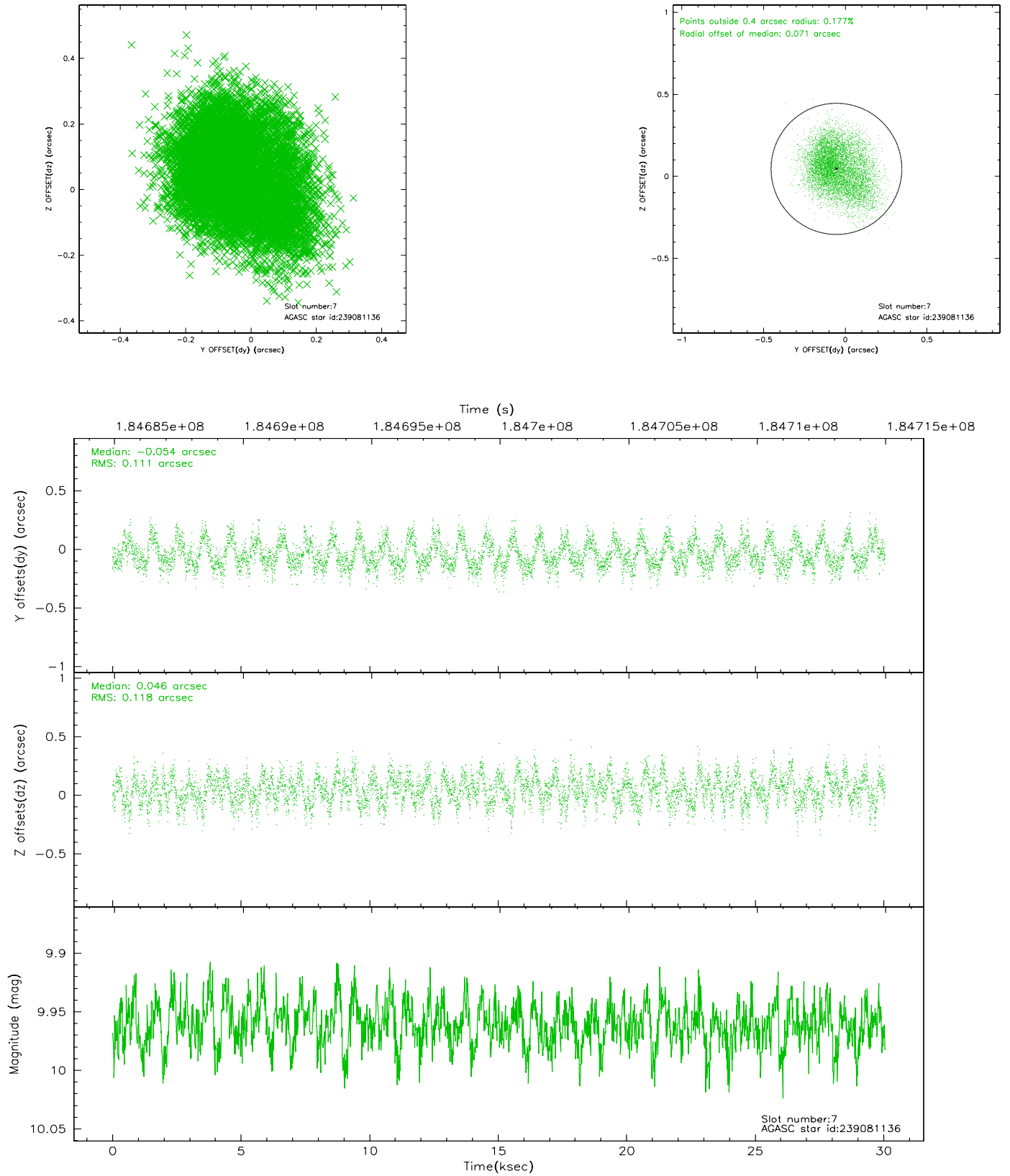
2.4.3 Slot 5



2.4.4 Slot 6

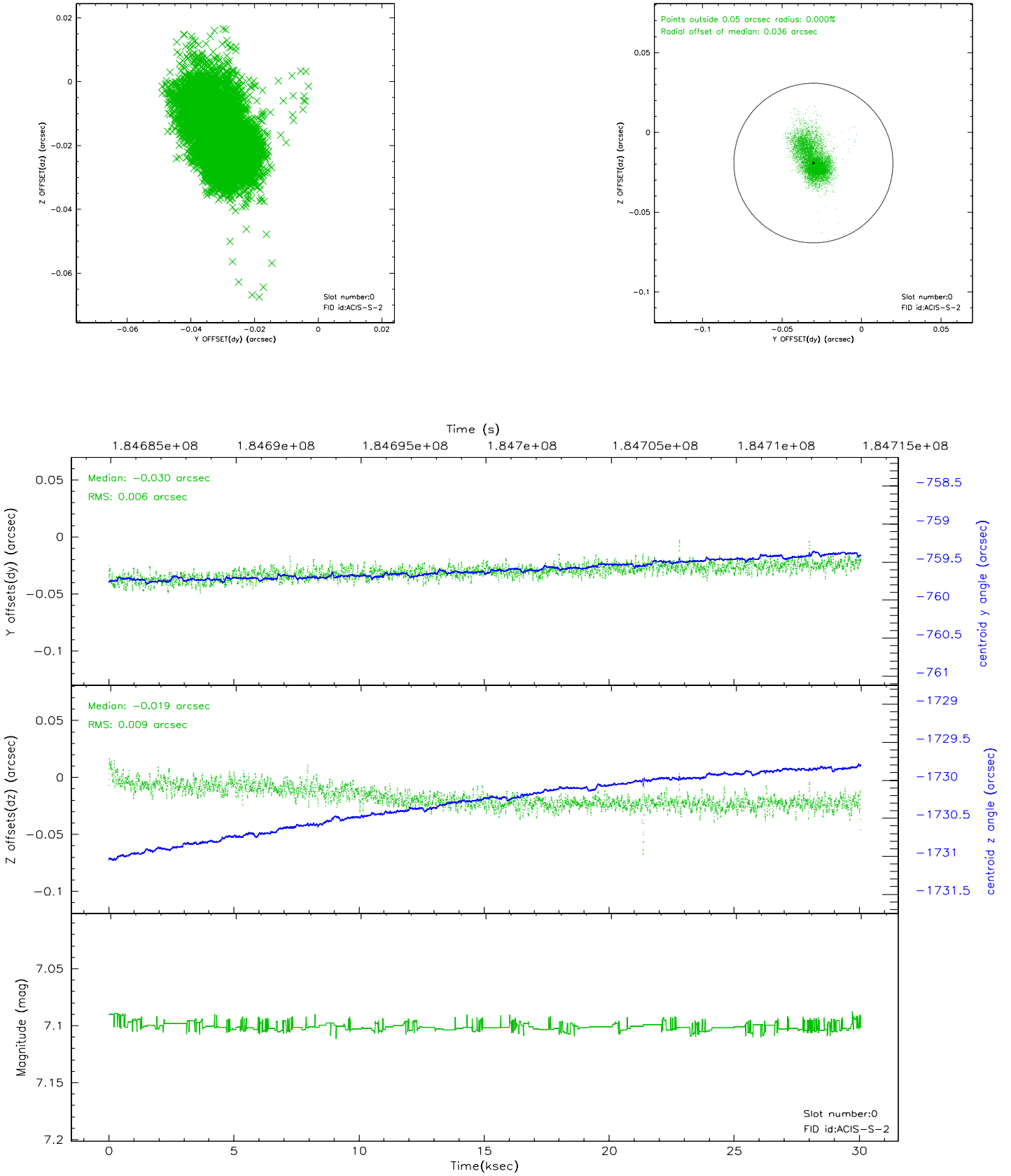


2.4.5 Slot 7

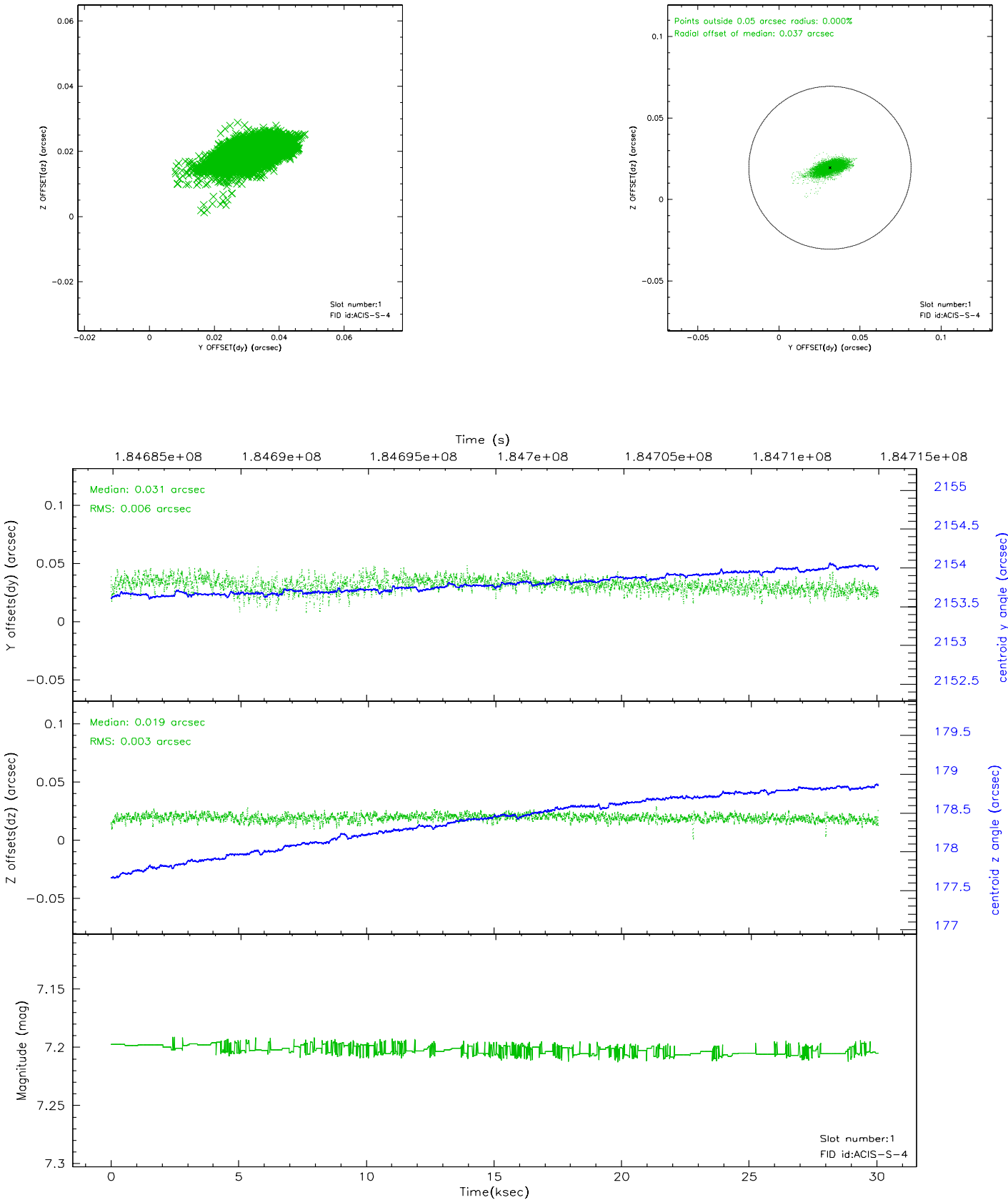


2.5 FID Slots

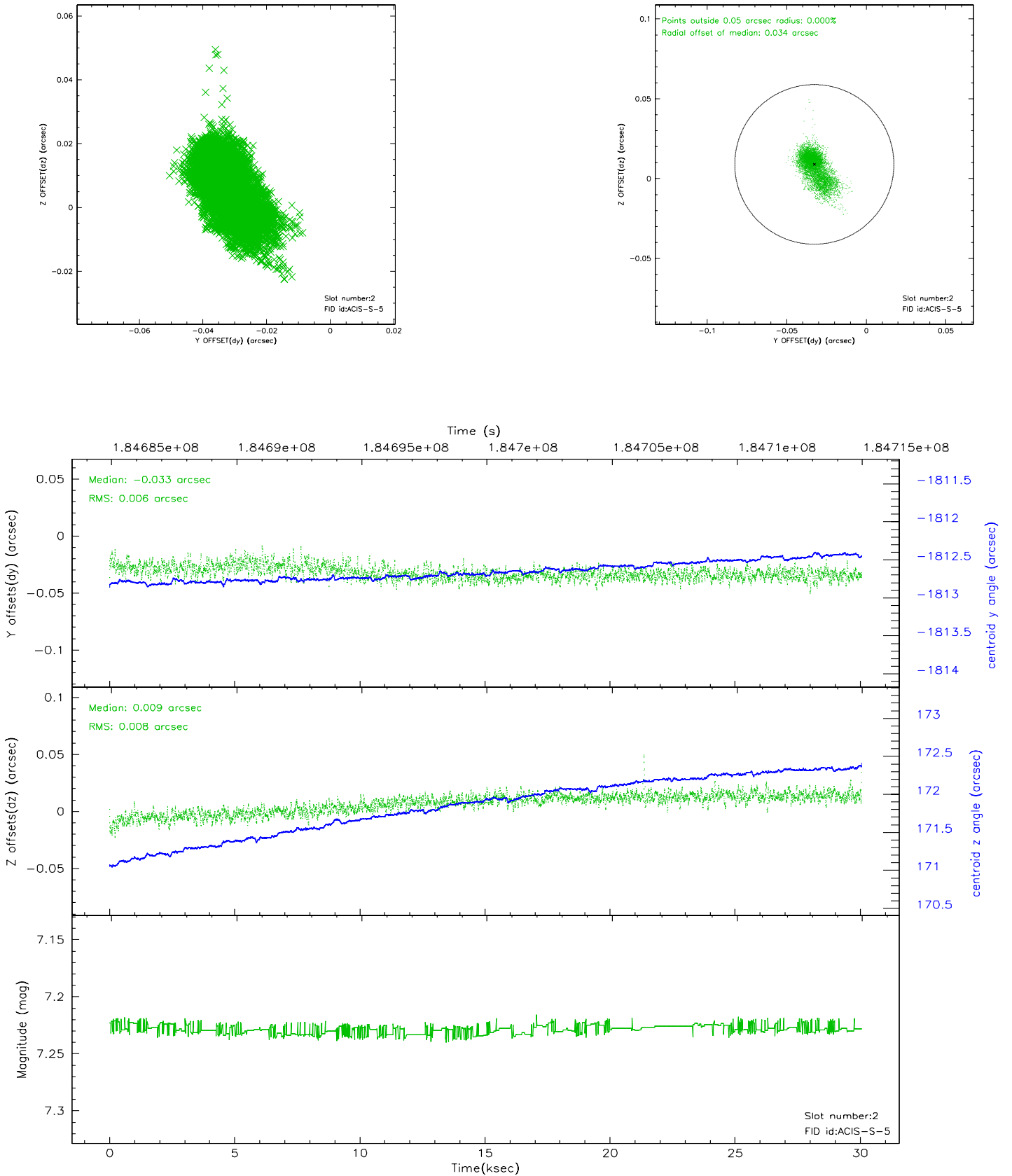
2.5.1 Slot 0



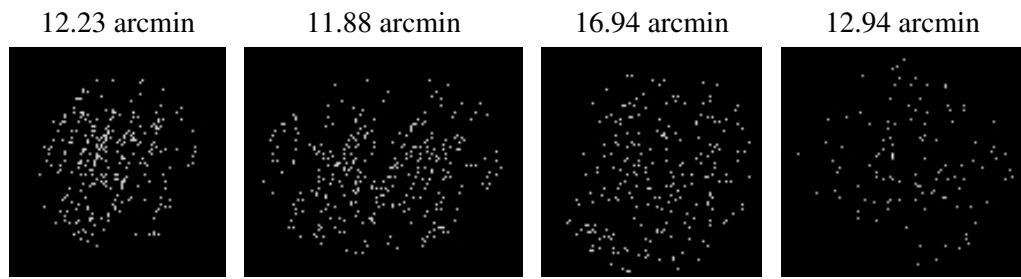
2.5.2 Slot 1



2.5.3 Slot 2



3 Point Sources



A Summary

A.1 Status

V&V Scientist	Beth Sundheim
V&V Date (YYYY-MM-DD)	2006.06.30
V&V Edition	1
V&V Disposition and Status	OK
V&V Charge Time	30.066

A.2 Comments