

V&V Reference Report

L2 ASCDS Version : 7.6.8.1

Observation 4438 - L2 Version 001
Chandra X-Ray Center

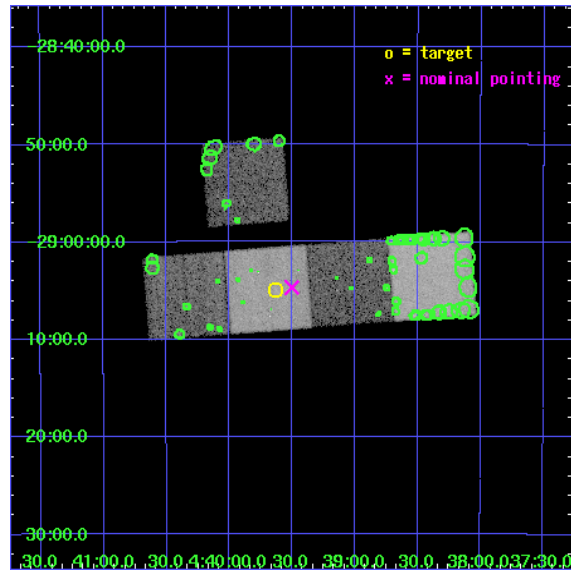
L2 Processing Date : Aug 6 2006

Contents

1	Front	2
2	OBI	3
2.1	OBI	3
2.1.1	Images	3
2.1.2	Bias	3
2.1.3	Parameters	4
2.1.4	Events	4
2.2	Compared Parameters	5
2.3	Aspect	6
2.4	Star Slots	9
2.4.1	Slot 3	9
2.4.2	Slot 4	10
2.4.3	Slot 5	11
2.4.4	Slot 6	12
2.4.5	Slot 7	13
2.5	FID Slots	14
2.5.1	Slot 0	14
2.5.2	Slot 1	15
2.5.3	Slot 2	16
3	Point Sources	17
A	Summary	18
A.1	Status	18
A.2	Comments	18

1 Front

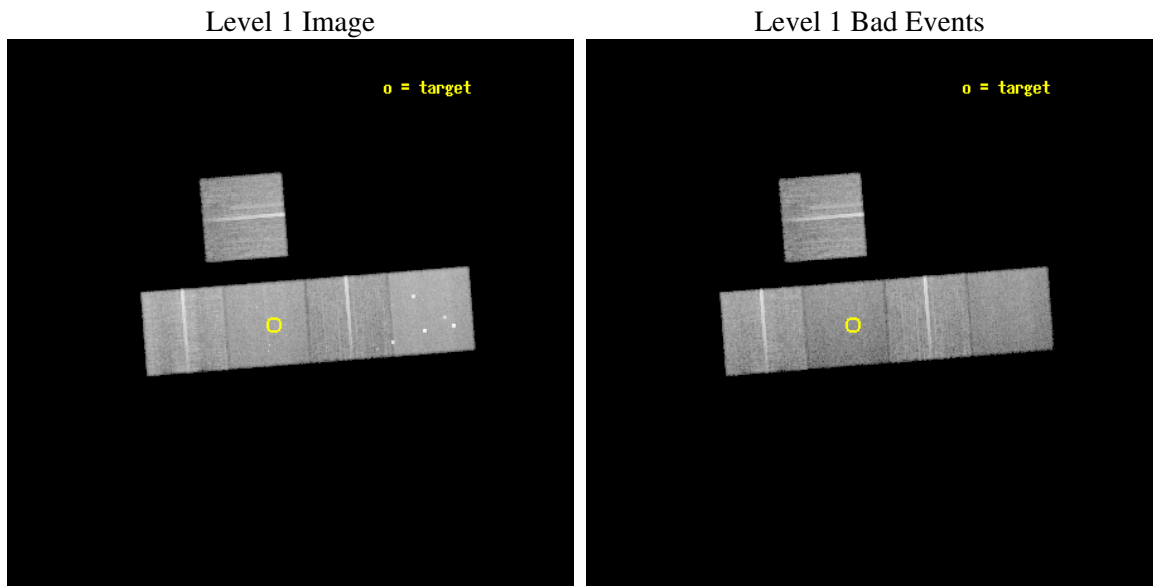
seq_num	800375
obs_id	4438
title	A Chandra Survey of a uniformly-selected sample of high-redshift galaxy clusters.
observer	Dr Marshall Bautz
object	RCS0439.6-2905
dtcycle	0
cycle	P
ra_targ	69.908333
dec_targ	-29.082
ra_nom	69.875419505083
dec_nom	-29.077988597306
roll_nom	175.52085589025
revision	2
ontime	29136.899943978
livetime	28756.204895936
ontime3	29133.758973777
ontime5	29136.899943978
ontime6	29136.899943978
ontime7	29136.899943978
ontime8	29133.758983731
l2events	195170



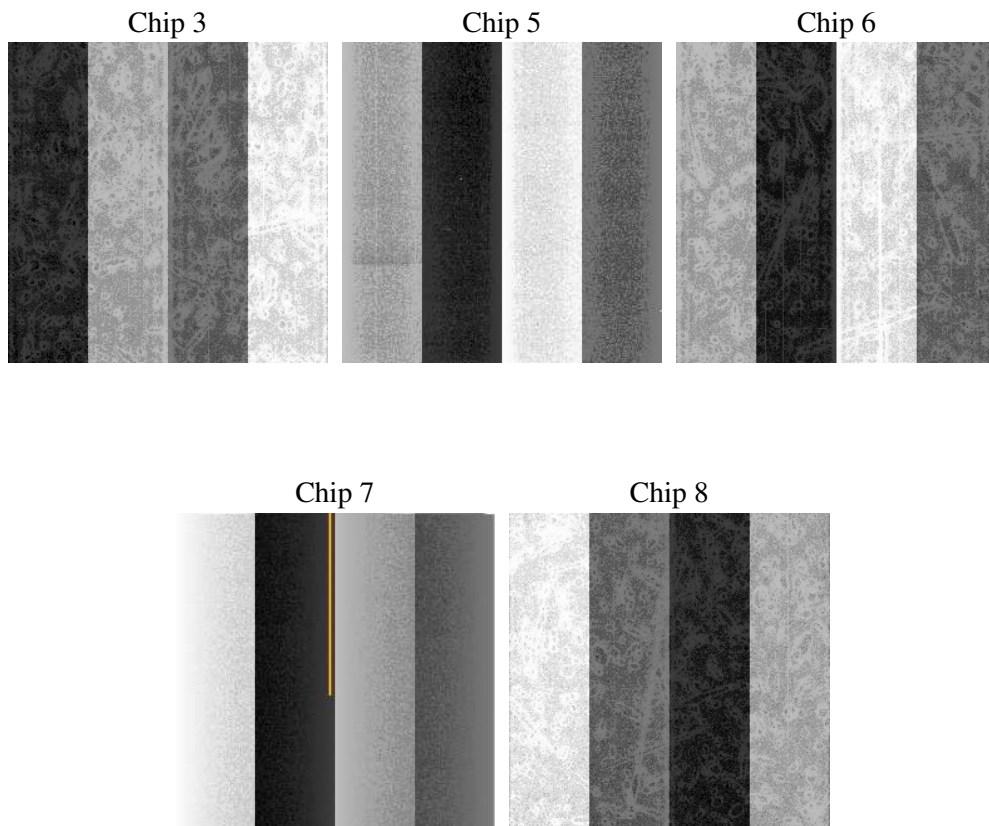
2 OBI

2.1 OBI

2.1.1 Images



2.1.2 Bias



2.1.3 Parameters

obi_num	2
ascdsver	7.6.8.1
caldsver	3.2.2
date	2006-08-06T22:08:43
revision	2

sched_exp_time	29000.000000
ontime	29242.725651145
ontime3	29239.584680945
ontime5	29242.725651145
ontime6	29242.725651145
ontime7	29242.725651145
ontime8	29239.584690899
l1events	852751

2.1.4 Events

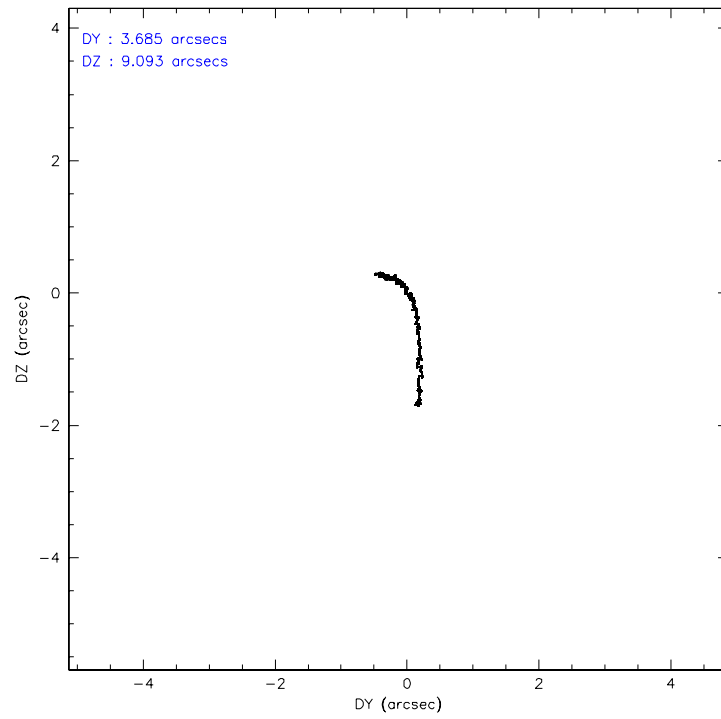
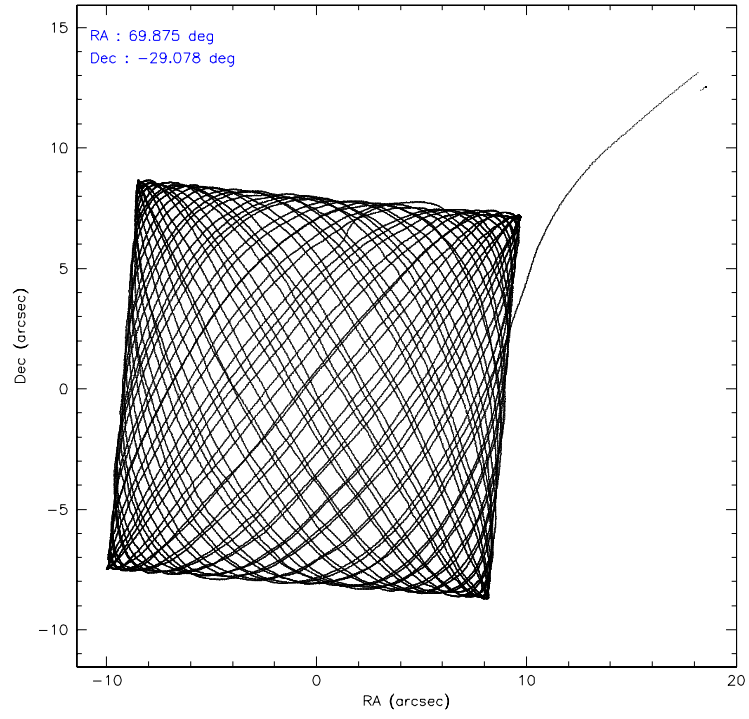
	ccd 3	ccd 5	ccd 6	ccd 7	ccd 8
level 1 events	150430	200677	150225	161799	189620
rejected events	136974	102129	134859	94059	147346
rejected %	91%	50%	89%	58%	77%

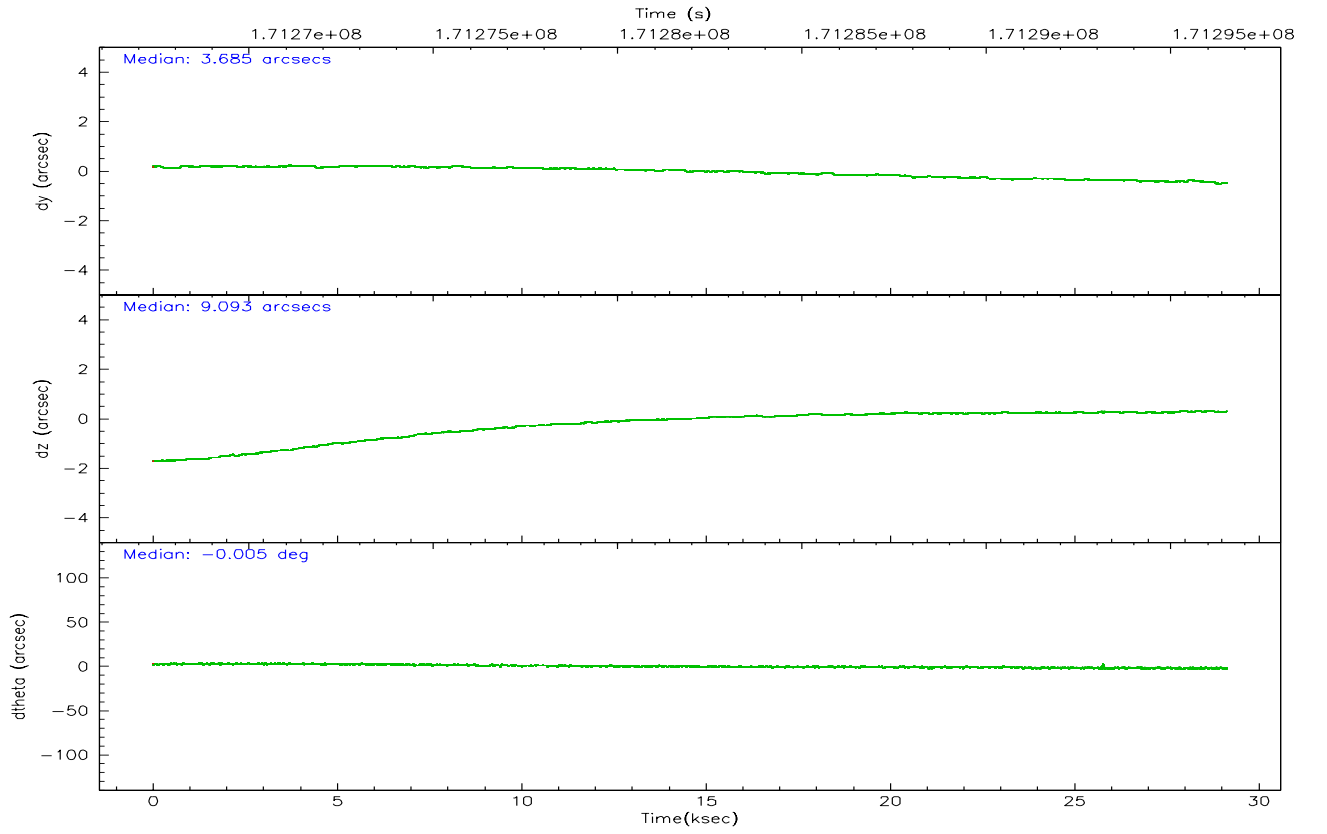
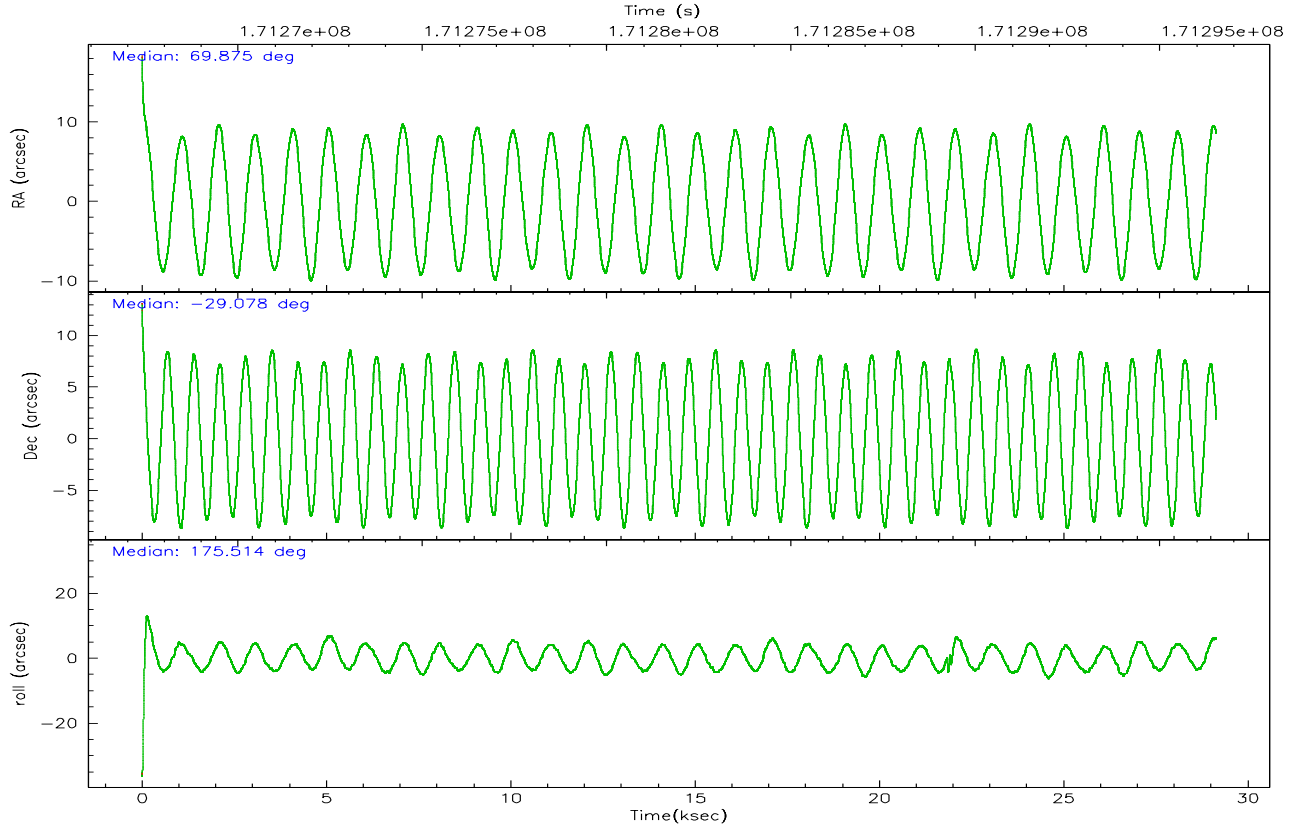
	ccd 3	ccd 5	ccd 6	ccd 7	ccd 8
grade 0 events	4605	11991	5455	4317	13260
	3%	5%	3%	2%	6%
grade 1 events	67	158	65	65	107
	0%	0%	0%	0%	0%
grade 2 events	2870	29241	3170	16474	9175
	1%	14%	2%	10%	4%
grade 3 events	1636	2667	1810	4190	4567
	1%	1%	1%	2%	2%
grade 4 events	1625	2428	1741	4097	4265
	1%	1%	1%	2%	2%
grade 5 events	5629	10687	5892	12570	8507
	3%	5%	3%	7%	4%
grade 6 events	2766	52620	3257	38931	11163
	1%	26%	2%	24%	5%
grade 7 events	131232	90885	128835	81155	138576
	87%	45%	85%	50%	73%

2.2 Compared Parameters

Parameter	Planned	Actual	Parameter	Planned	Actual
Instrument	ACIS	ACIS	Obspar format version number	6	6
Detector	ACIS-35678	ACIS-35678	Obspar file type	PREDICTED	ACTUAL
Grating	NONE	NONE	Obspar update status	NONE	UPDATED
Data mode	VFAINT	VFAINT	On-chip summing requested	N	N
Observation mode	POINTING	POINTING	Subarray requested	NONE	NONE
Pointing RA	69.903313	69.87541950508319	Alternating exposures requested	N	N
Pointing Dec	-29.065924	-29.07798859730637	Primary exposure time	0.000000	3.1
Pointing Roll	175.377808	175.5208558902518			
SIM focus pos (mm)	-0.684267	-0.6828225247311905			
SIM defocus (mm)	0	0.001444936568705701			
SIM translation stage pos (mm)	-190.132523	-190.1400660498719			
SIM translation stage offset (mm)	0	0.00754346686406393			
Observation start time	171267531.184000	171266389.2235			
Observation start date	2003-06-06T06:17:47	2003-06-06T05:59:49			
Observation end time	171296531.184000	171297305.78731			
Observation end date	2003-06-06T14:21:07	2003-06-06T14:35:05			
Read mode	TIMED	TIMED			

2.3 Aspect



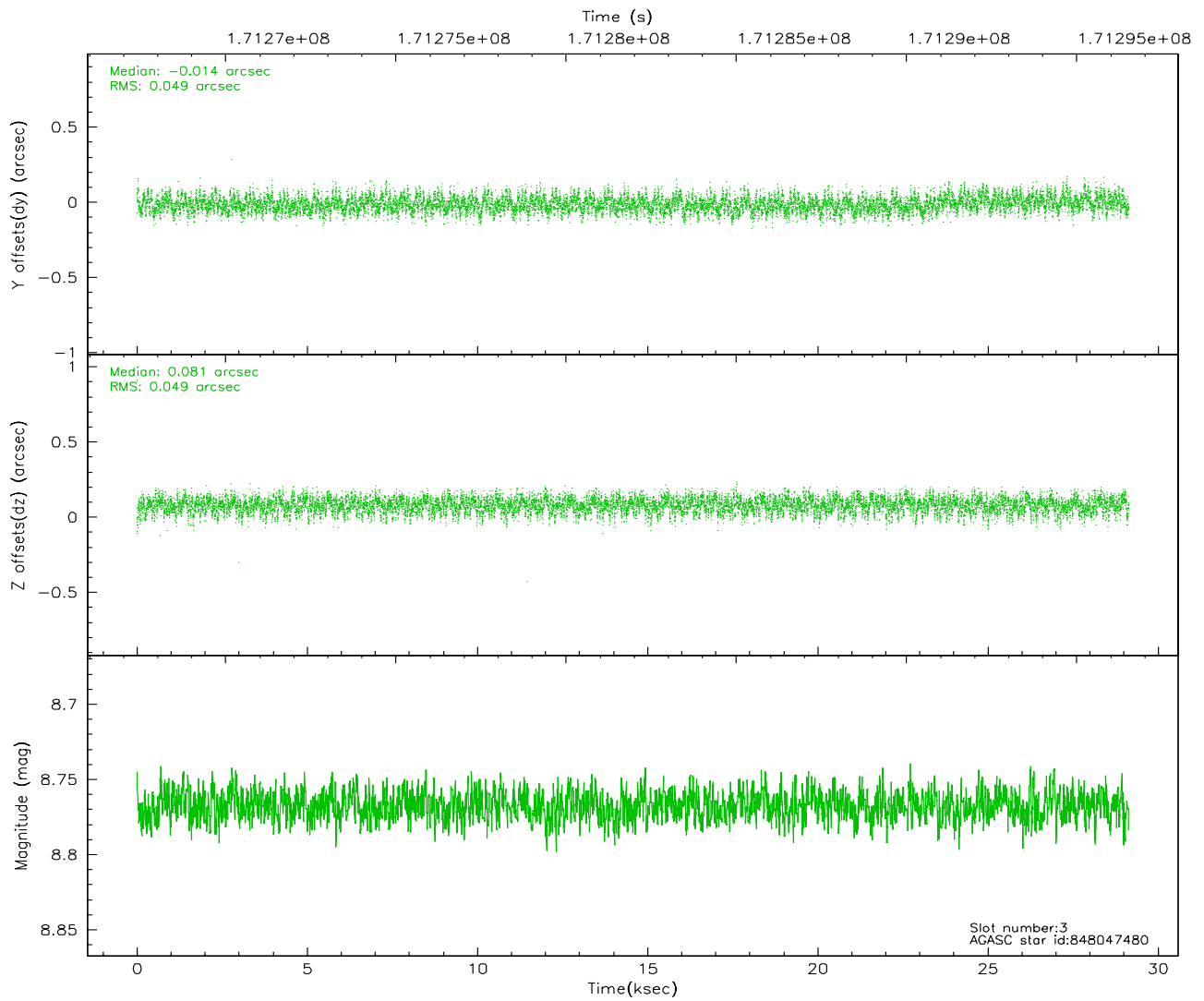
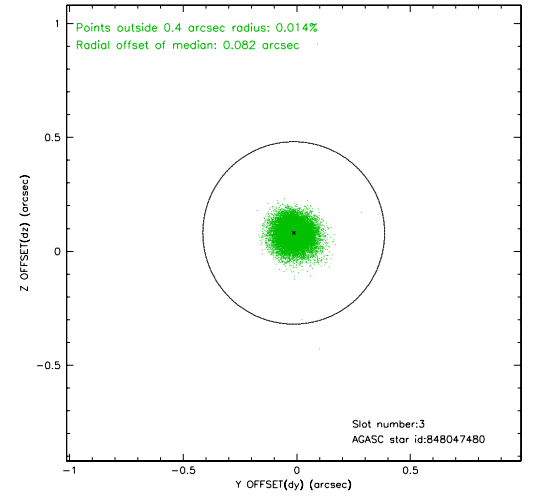
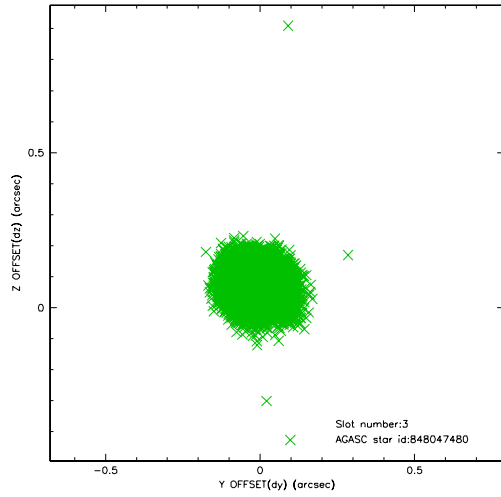


Slot Statistics

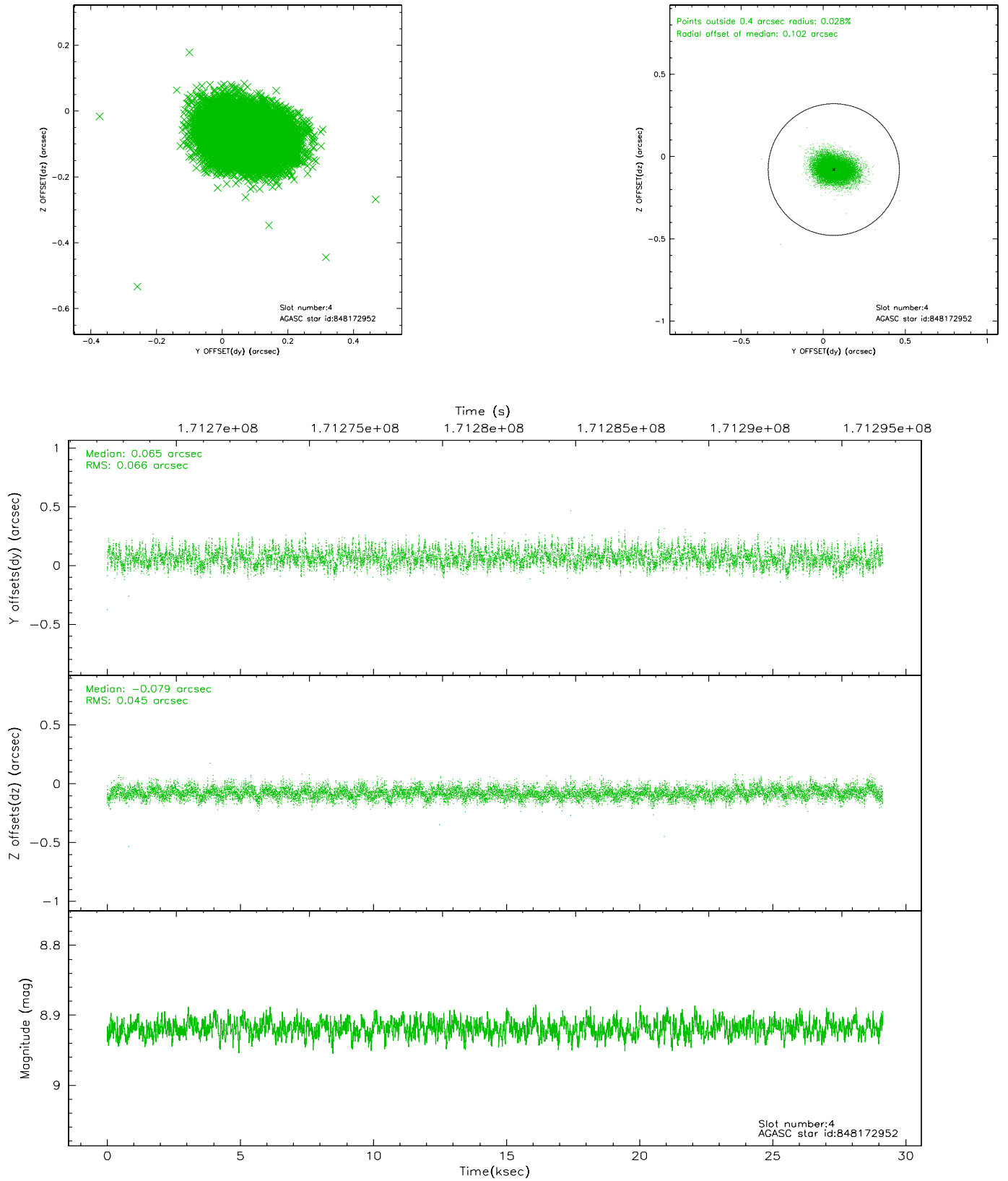
slot	status	id	mag	n_pts	med_dy	med_dz	dr1	dr2	ra	dec	mean_y	mean_z
0	FID	ACIS-S-1	7.19	7109	0.020	0.032	0.013	0.060	0.000000	0.000000	939.73	-1725.66
1	FID	ACIS-S-2	7.11	7109	-0.037	-0.019	0.015	0.039	0.000000	0.000000	-756.19	-1730.30
2	FID	ACIS-S-4	7.19	7109	-0.007	-0.006	0.013	0.027	0.000000	0.000000	2156.93	178.38
3	GUIDE	848047480	8.77	14212	-0.014	0.081	0.074	0.117	69.257860	-28.952835	2059.16	-235.63
4	GUIDE	848172952	8.92	14213	0.065	-0.079	0.085	0.139	70.513663	-29.632090	-2068.24	1882.57
5	GUIDE	848176464	8.95	14209	-0.075	0.032	0.081	0.130	70.004301	-28.552244	-169.21	-1868.28
6	GUIDE	848177296	9.18	14214	-0.072	-0.007	0.074	0.120	70.244110	-29.383303	-1157.90	1054.38
7	GUIDE	848177384	9.18	14206	0.097	-0.027	0.105	0.169	70.585379	-29.712531	-2314.26	2155.46

2.4 Star Slots

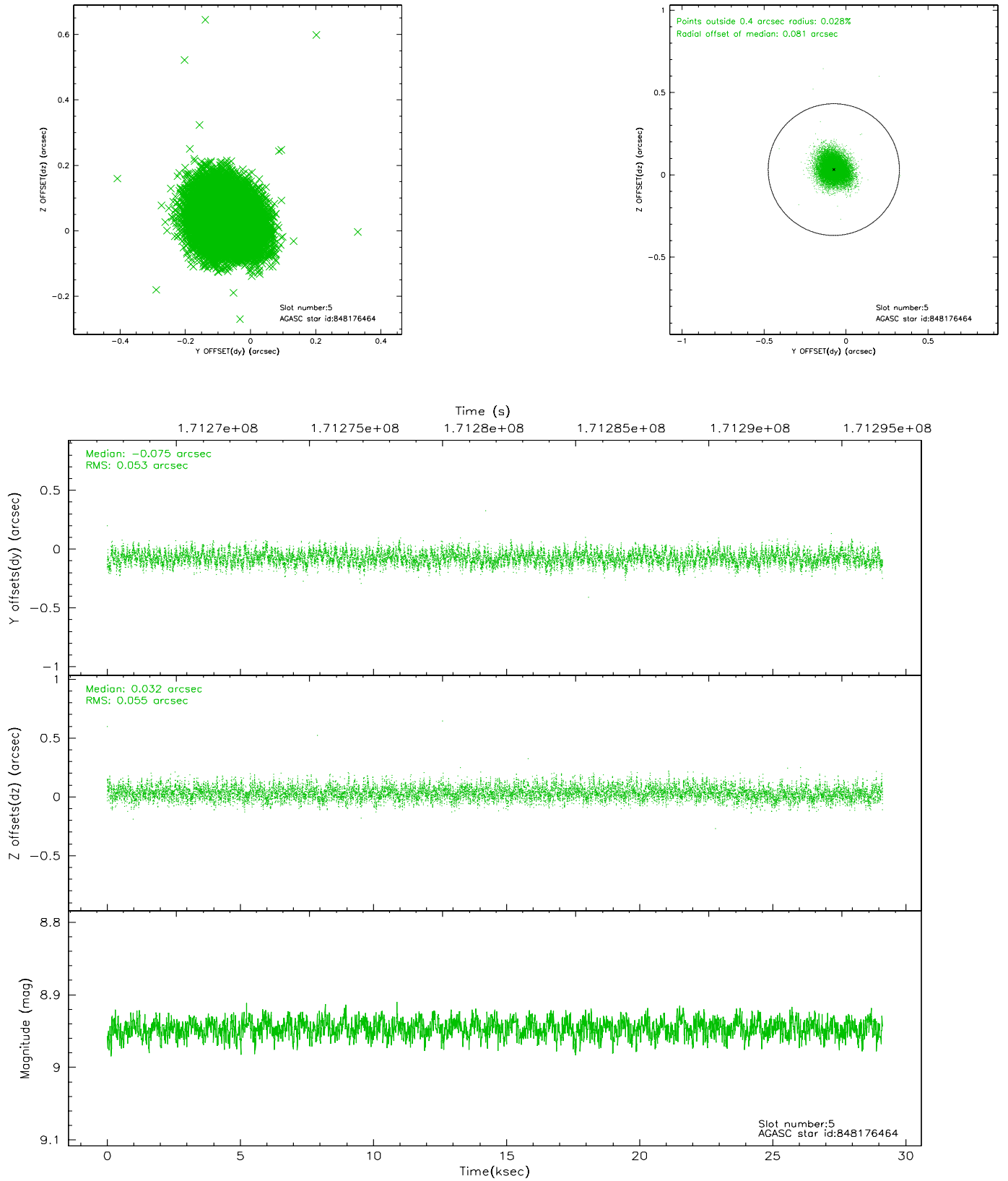
2.4.1 Slot 3



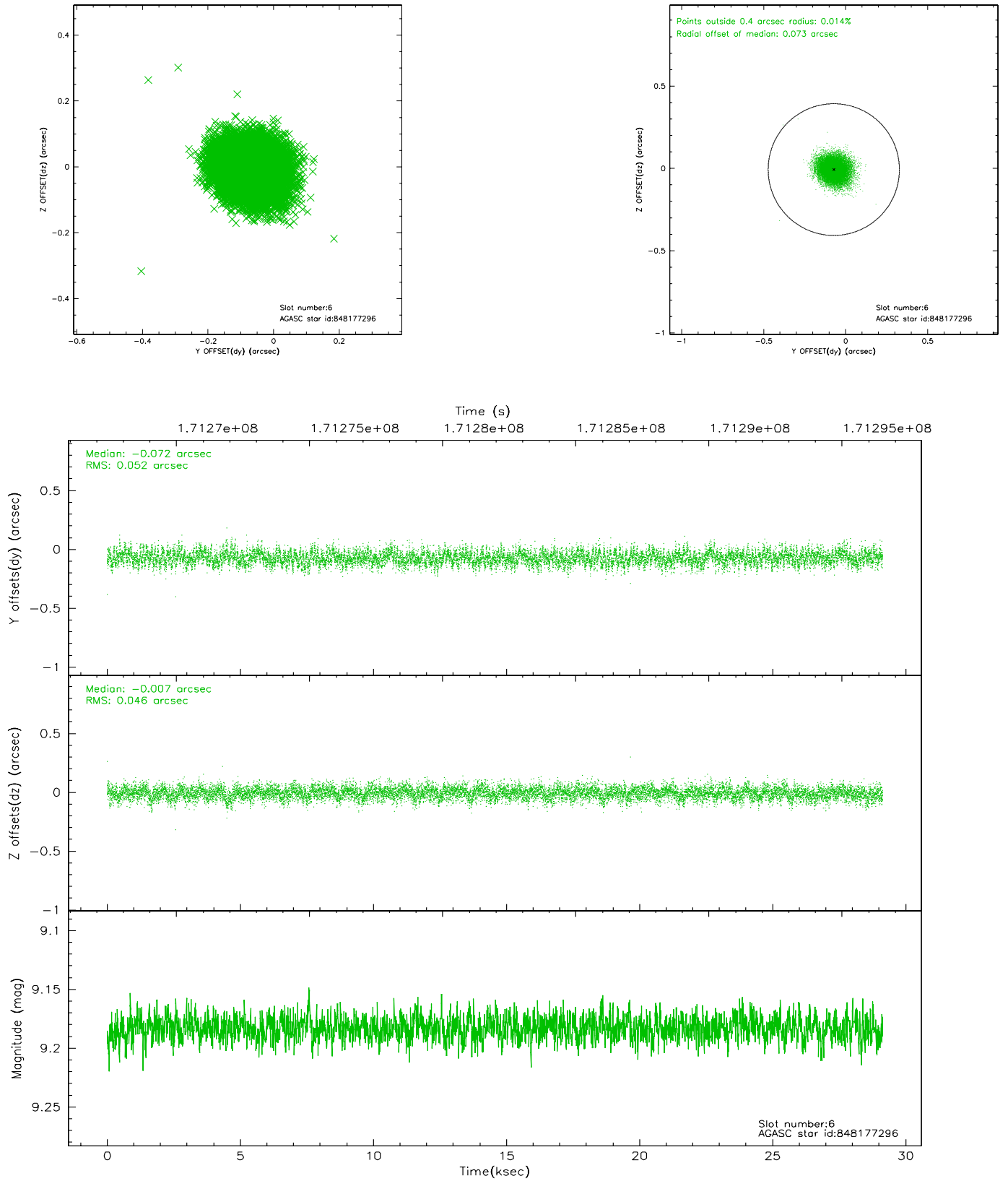
2.4.2 Slot 4



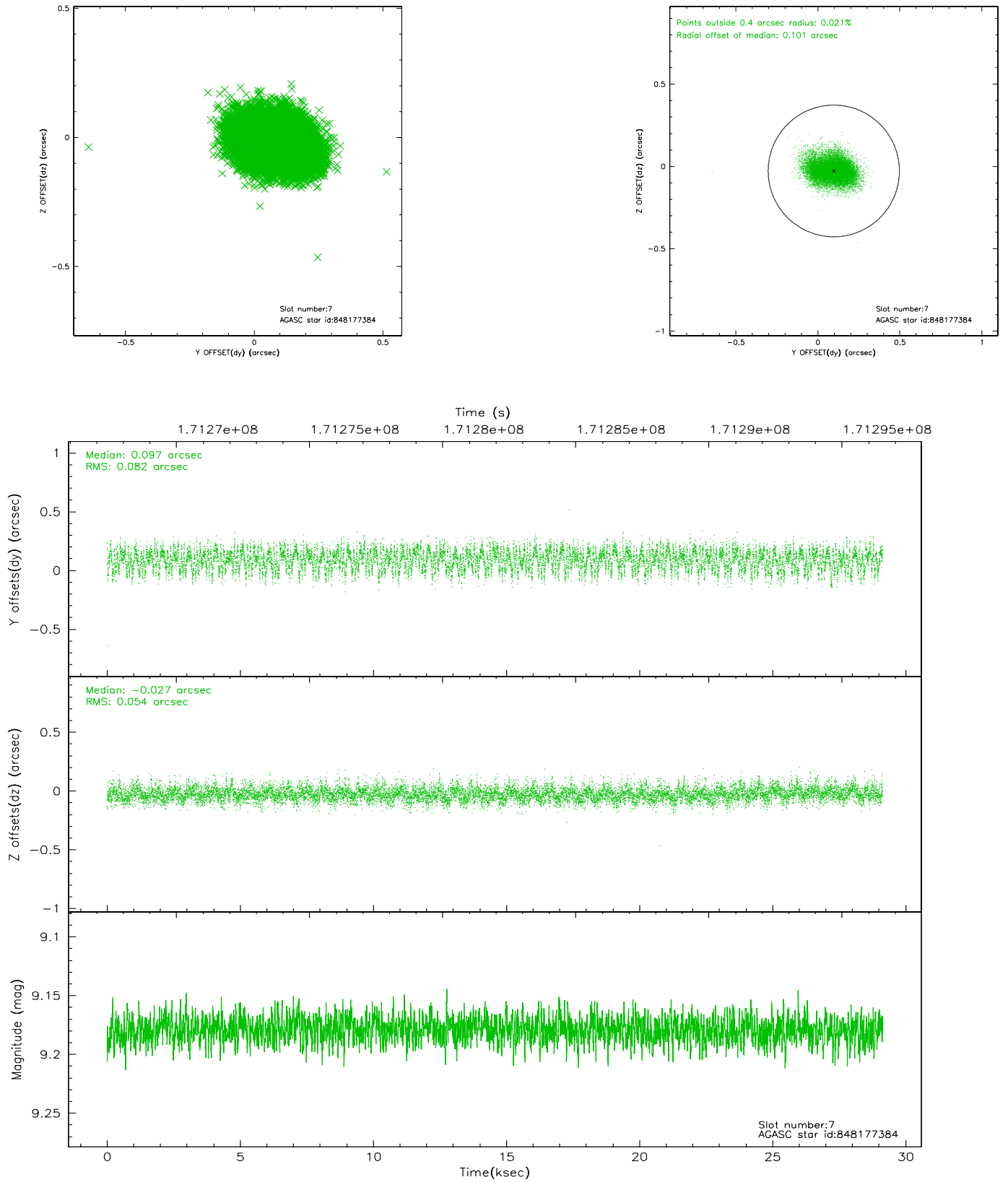
2.4.3 Slot 5



2.4.4 Slot 6

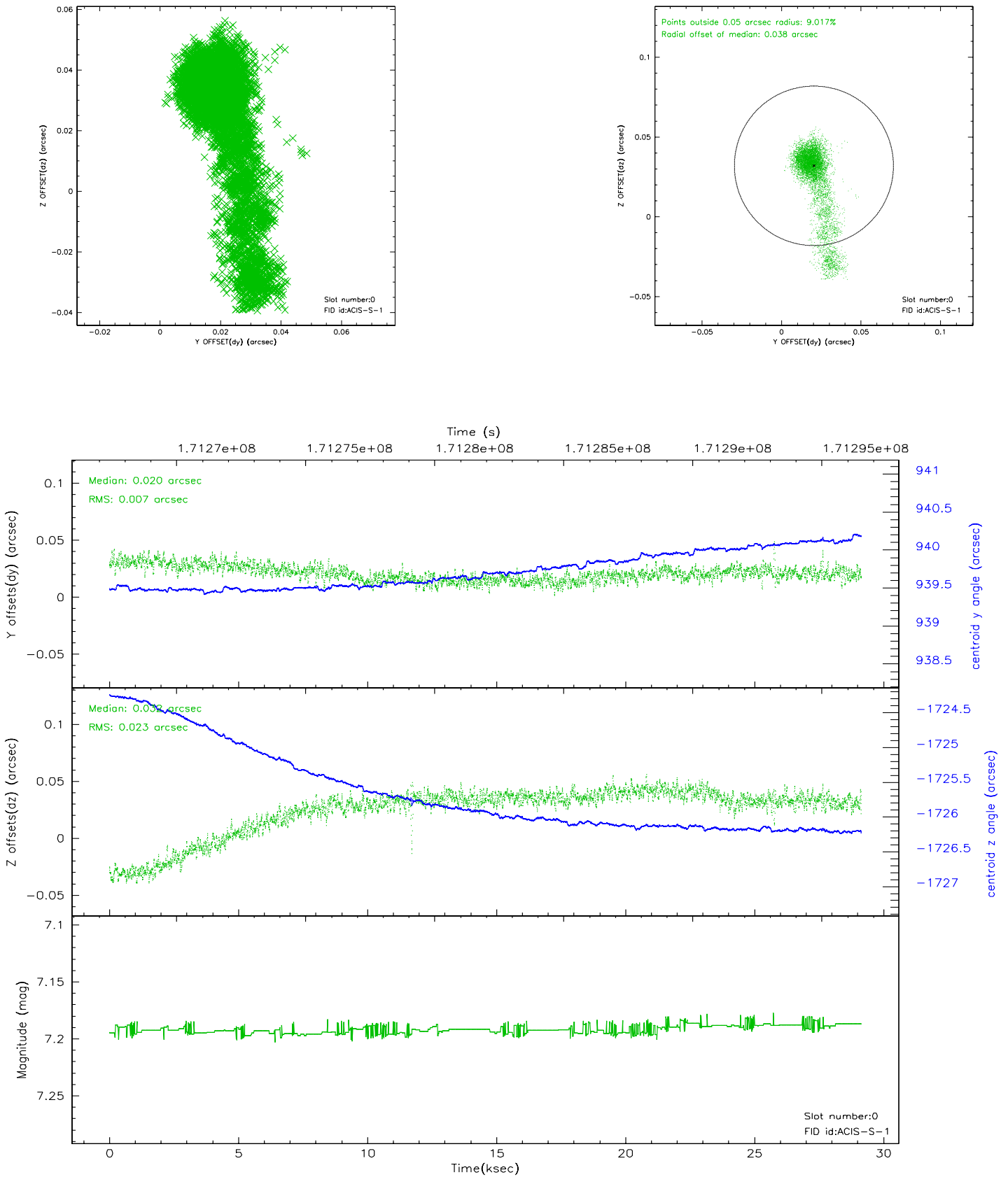


2.4.5 Slot 7

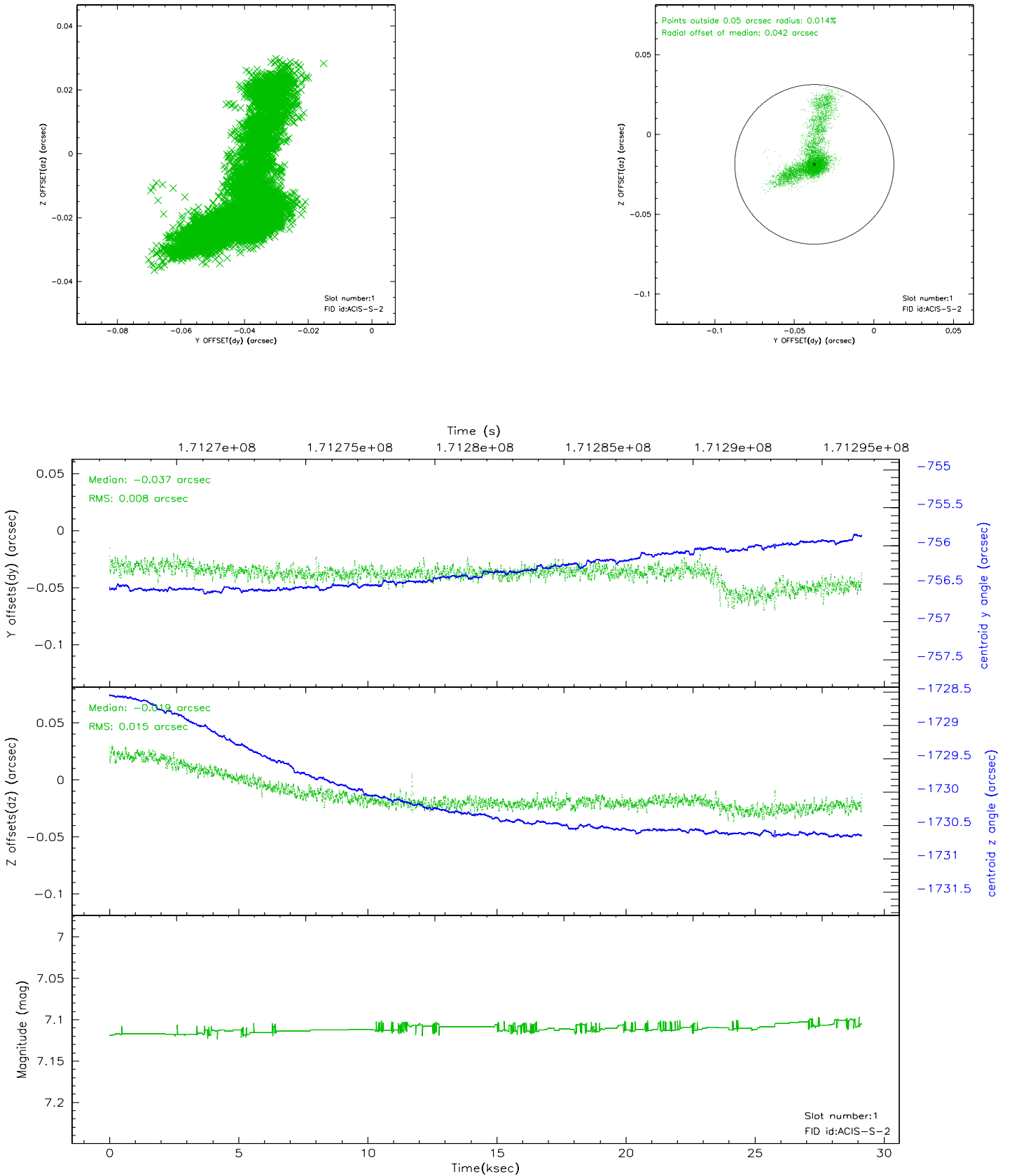


2.5 FID Slots

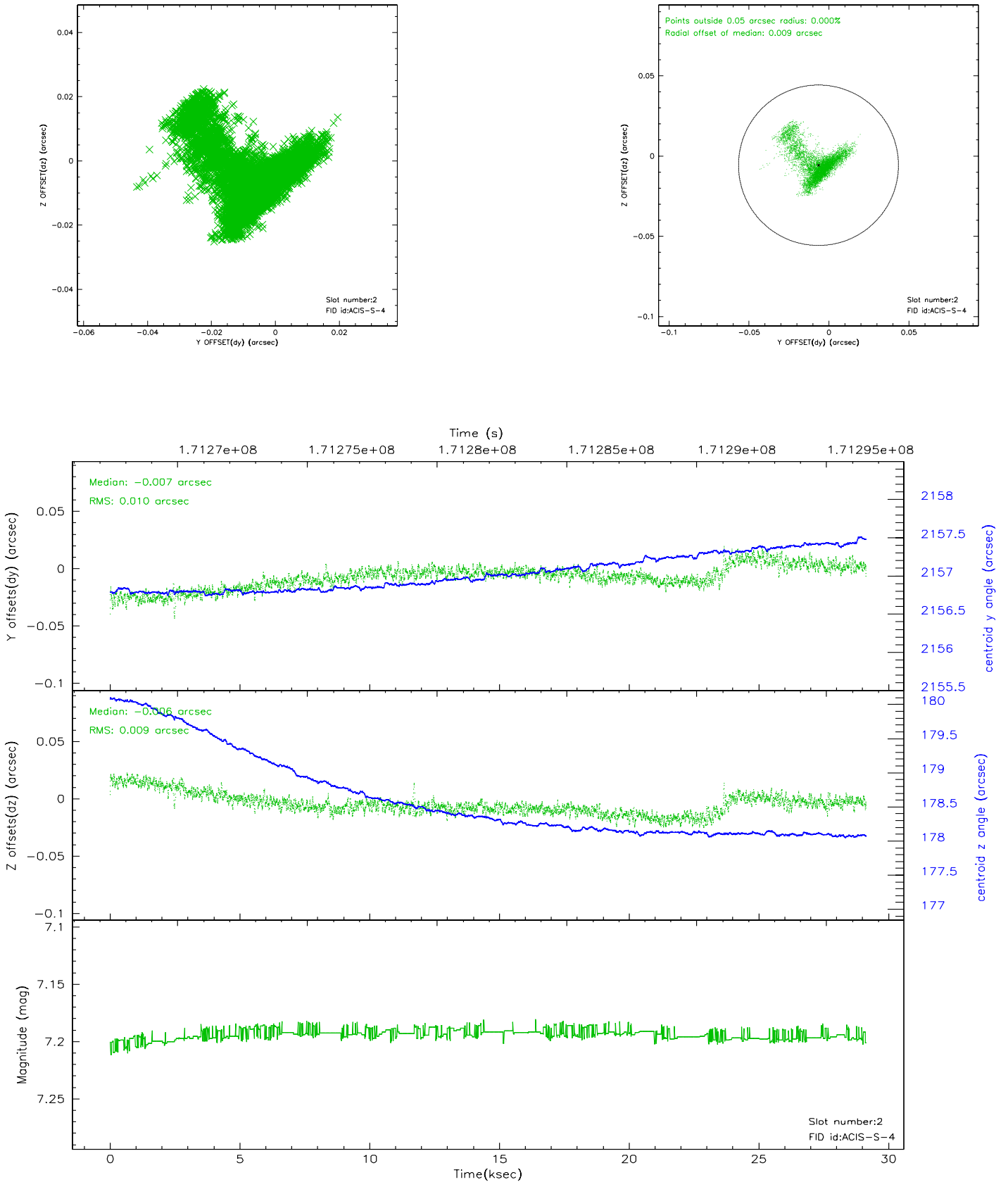
2.5.1 Slot 0



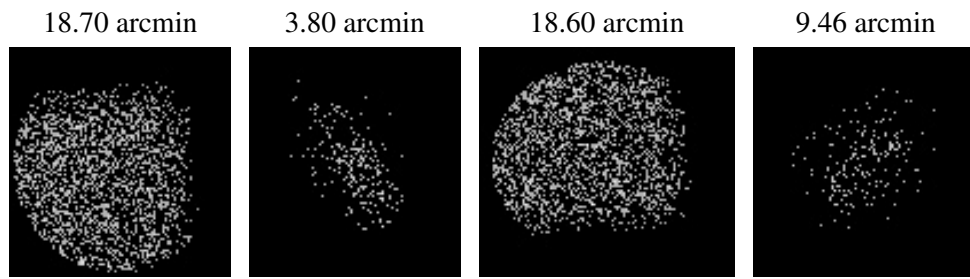
2.5.2 Slot 1



2.5.3 Slot 2



3 Point Sources



A Summary

A.1 Status

V&V Scientist	Jen Lauer
V&V Date (YYYY-MM-DD)	2006.08.10
V&V Edition	1
V&V Disposition and Status	OK
V&V Charge Time	29.136

A.2 Comments