

# V&V Reference Report

## L2 ASCDS Version : 7.6.8

Observation 4278 - L2 Version 001  
Chandra X-Ray Center

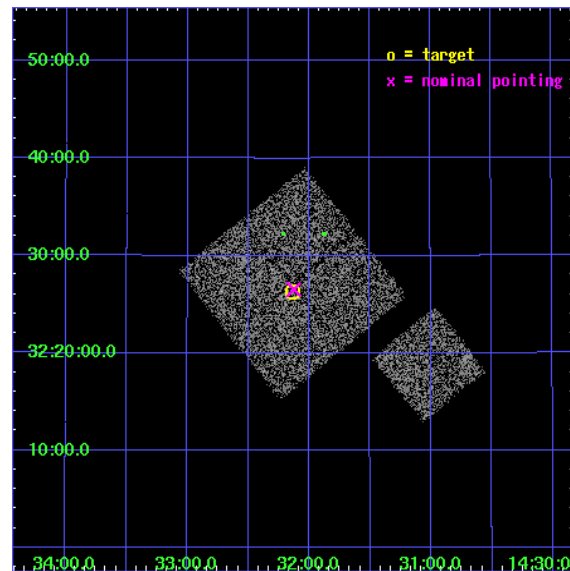
L2 Processing Date : Jul 29 2006

## Contents

<b>1</b>	<b>Front</b>	<b>2</b>
<b>2</b>	<b>OBI</b>	<b>3</b>
2.1	OBI . . . . .	3
2.1.1	Images . . . . .	3
2.1.2	Bias . . . . .	3
2.1.3	Parameters . . . . .	4
2.1.4	Events . . . . .	4
2.2	Compared Parameters . . . . .	5
2.3	Aspect . . . . .	6
2.4	Star Slots . . . . .	9
2.4.1	Slot 3 . . . . .	9
2.4.2	Slot 4 . . . . .	10
2.4.3	Slot 5 . . . . .	11
2.4.4	Slot 6 . . . . .	12
2.4.5	Slot 7 . . . . .	13
2.5	FID Slots . . . . .	14
2.5.1	Slot 0 . . . . .	14
2.5.2	Slot 1 . . . . .	15
2.5.3	Slot 2 . . . . .	16
<b>3</b>	<b>Point Sources</b>	<b>17</b>
<b>A</b>	<b>Summary</b>	<b>18</b>
A.1	Status . . . . .	18
A.2	Comments . . . . .	18

# 1 Front

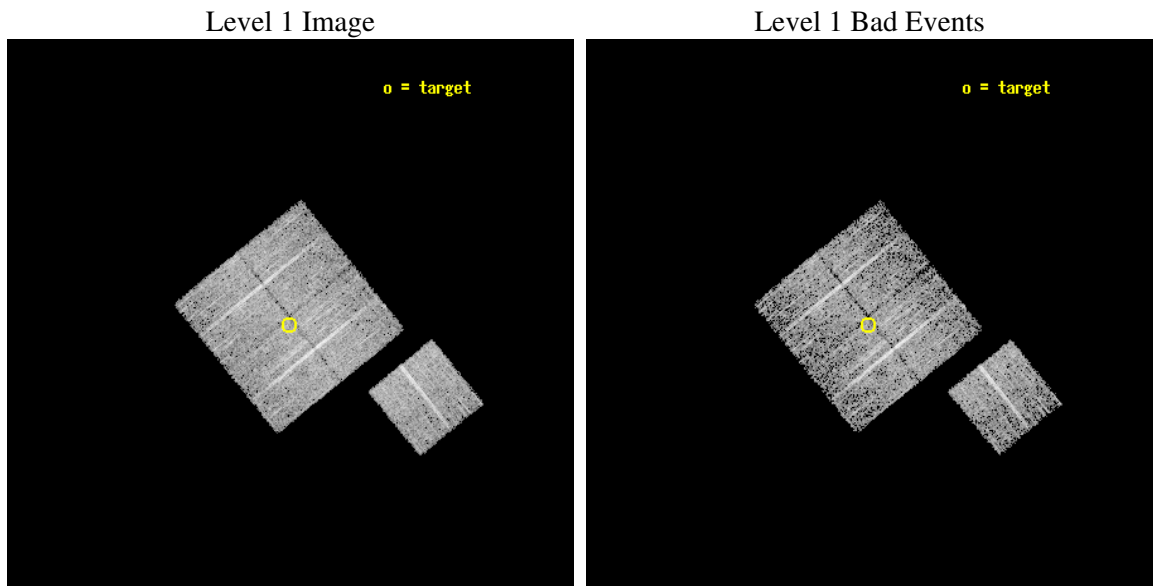
seq_num	900321
obs_id	4278
title	A CHANDRA WIDE-FIELD SURVEY TO MAP THE COSMIC WEB AND INVESTIGATE THE EVOLUTION OF NUCLEAR ACCRETION
observer	Dr. Christine Jones
object	SS56
dtcycle	0
cycle	P
ra_targ	218.034014
dec_targ	32.438448
ra_nom	218.03135735262
dec_nom	32.442495409208
roll_nom	141.01009304648
revision	2
ontime	5015.799990356
livetime	4950.2648709037
ontime0	5015.799990356
ontime1	5015.799990356
ontime2	5015.799990356
ontime3	5015.799990356
ontime6	5015.799990356
l2events	16265



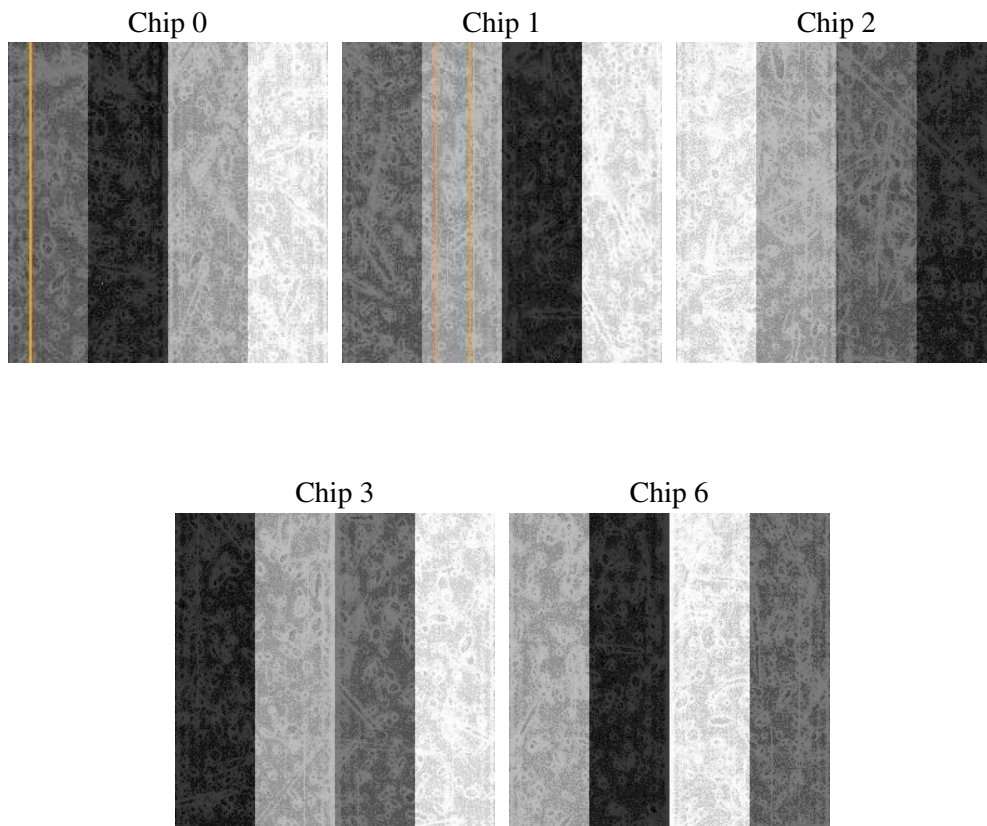
## 2 OBI

### 2.1 OBI

#### 2.1.1 Images



#### 2.1.2 Bias



### 2.1.3 Parameters

obi_num	1
ascdsver	7.6.8
caldbver	3.2.2
date	2006-07-29T21:34:25
revision	2

sched_exp_time	4900.000000
ontime	5022.4741820395
ontime0	5022.4741820395
ontime1	5022.4741820395
ontime2	5022.4741820395
ontime3	5022.4741820395
ontime6	5022.4741621315
llevents	153606

### 2.1.4 Events

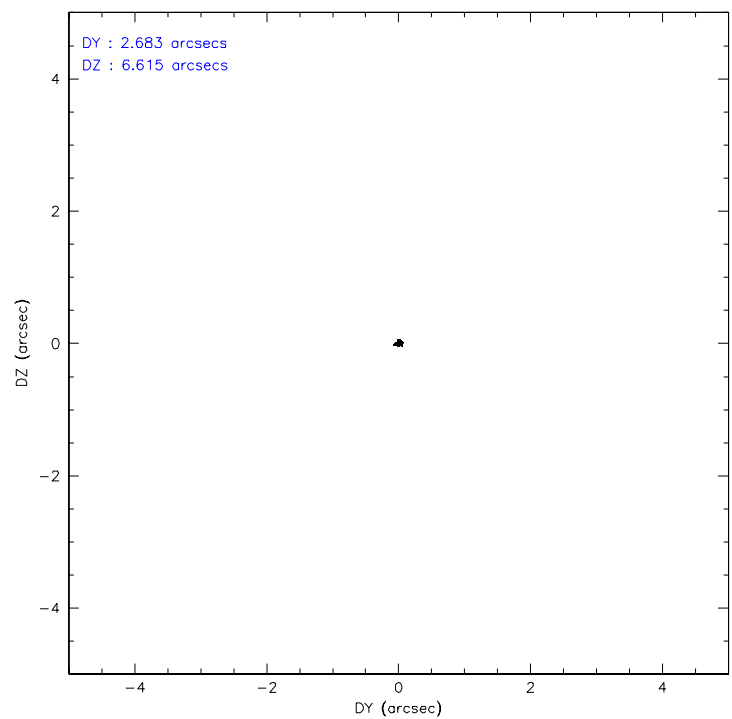
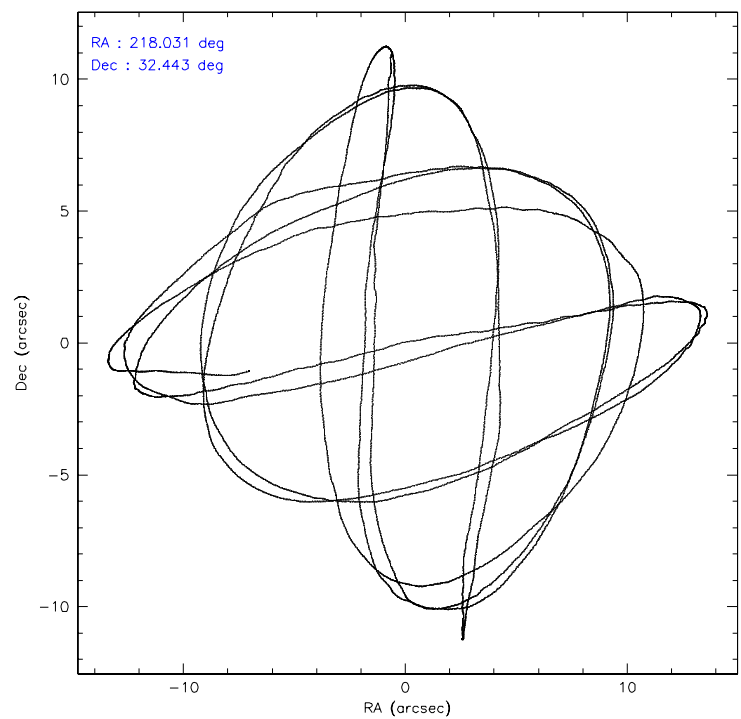
	ccd 0	ccd 1	ccd 2	ccd 3	ccd 6
level 1 events	28138	30306	32621	30857	31684
rejected events	24255	26318	28852	27351	27939
rejected %	86%	86%	88%	88%	88%

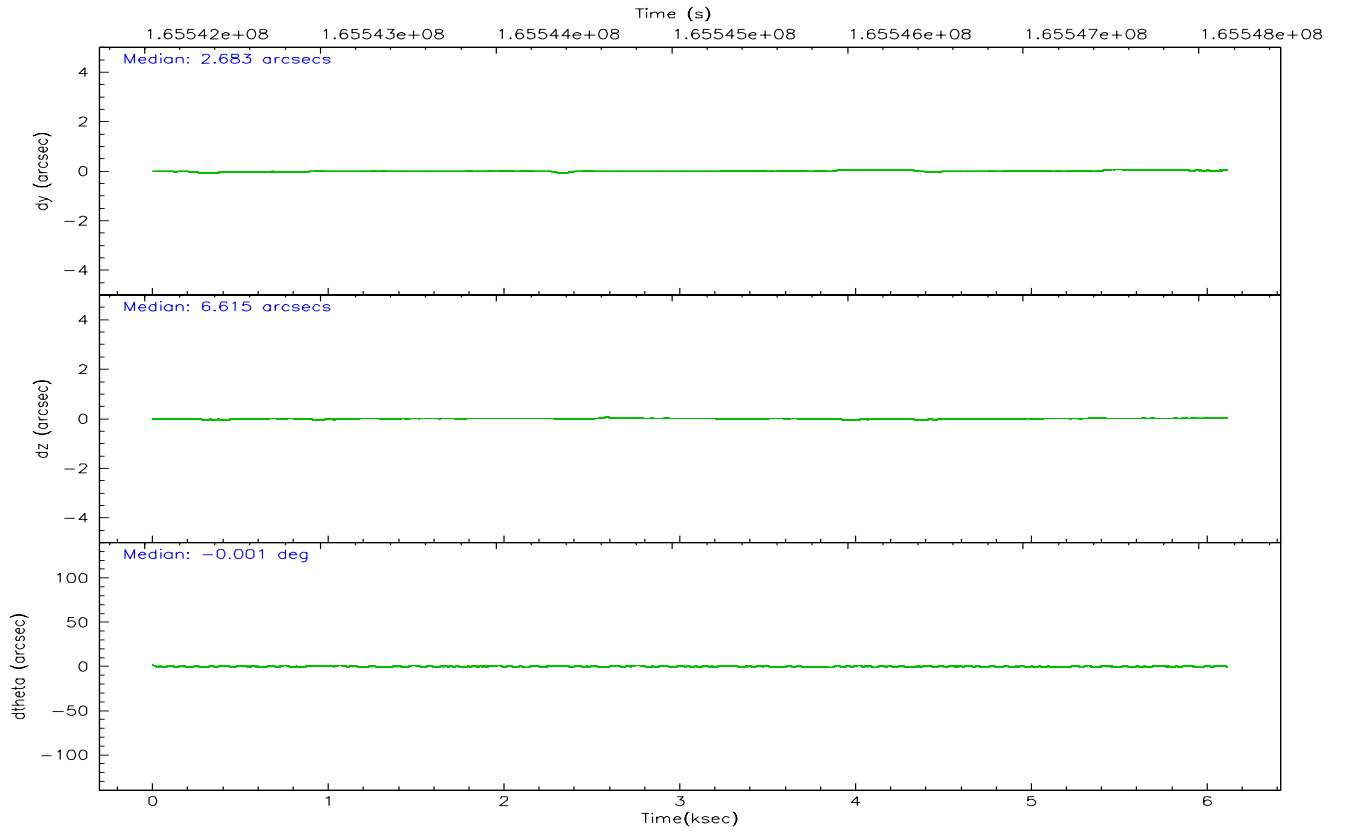
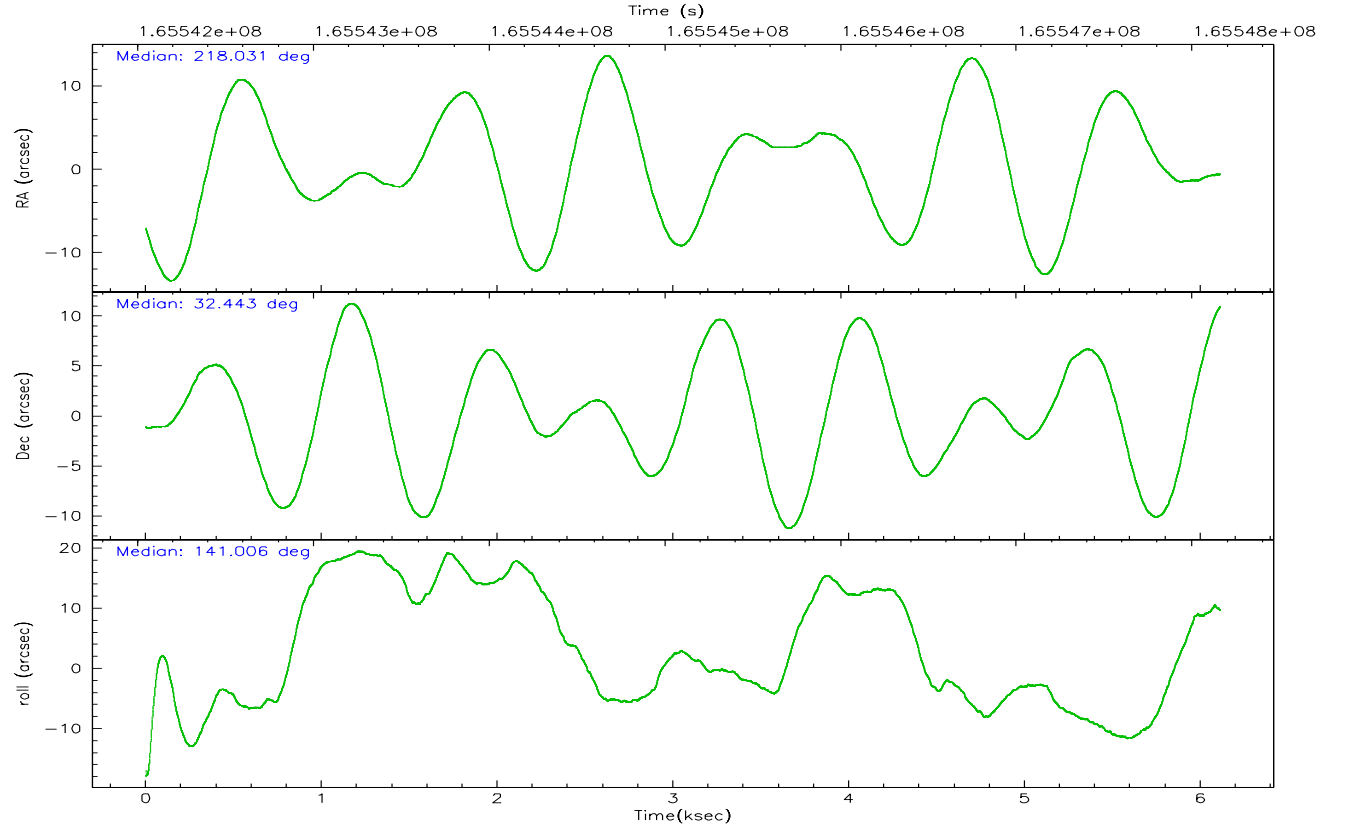
	ccd 0	ccd 1	ccd 2	ccd 3	ccd 6
grade 0 events	1665	1609	1678	1569	1512
	5%	5%	5%	5%	4%
grade 1 events	9	12	19	15	18
	0%	0%	0%	0%	0%
grade 2 events	839	840	748	670	764
	2%	2%	2%	2%	2%
grade 3 events	357	380	368	349	379
	1%	1%	1%	1%	1%
grade 4 events	342	404	365	341	361
	1%	1%	1%	1%	1%
grade 5 events	1271	1326	1200	1417	1376
	4%	4%	3%	4%	4%
grade 6 events	686	761	618	580	734
	2%	2%	1%	1%	2%
grade 7 events	22969	24974	27625	25916	26540
	81%	82%	84%	83%	83%

## 2.2 Compared Parameters

Parameter	Planned	Actual	Parameter	Planned	Actual
Instrument	ACIS	ACIS	Obspar format version number	6	6
Detector	ACIS-01236	ACIS-01236	Obspar file type	PREDICTED	ACTUAL
Grating	NONE	NONE	Obspar update status	NONE	UPDATED
Data mode	VFAINT	VFAINT	On-chip summing requested	N	N
Observation mode	POINTING	POINTING	Subarray requested	NONE	NONE
Pointing RA	218.063500	218.0313573526193	Alternating exposures requested	N	N
Pointing Dec	32.438360	32.44249540920838	Primary exposure time	0.000000	3.1
Pointing Roll	140.784189	141.0100930464792			
SIM focus pos (mm)	-0.782348	-0.7809083437167272			
SIM defocus (mm)	0	0.001439871863259334			
SIM translation stage pos (mm)	-233.592463	-233.5874344608287			
SIM translation stage offset (mm)	0	-0.005018542100998502			
Observation start time	165543264.184000	165541787.55632			
Observation start date	2003-04-01T00:13:20	2003-03-31T23:49:47			
Observation end time	165548164.184000	165548297.84409			
Observation end date	2003-04-01T01:35:00	2003-04-01T01:38:17			
Read mode	TIMED	TIMED			

## 2.3 Aspect





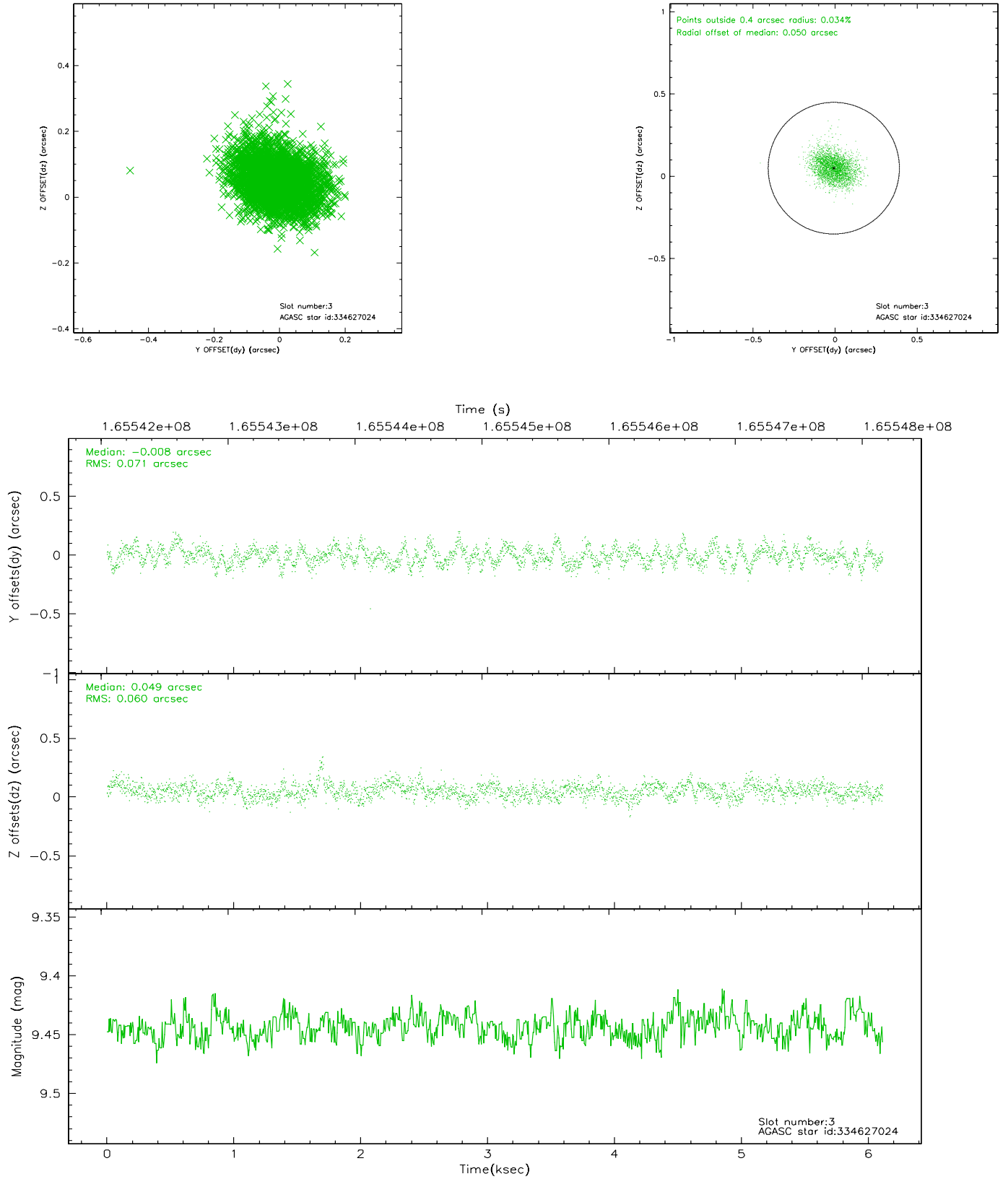
### Slot Statistics

slot	status	id	mag	n_pts	med_dy	med_dz	dr1	dr2	ra	dec	mean_y	mean_z
0	FID	ACIS-I-1	7.25	1491	-0.005	0.019	0.005	0.009	0.000000	0.000000	937.10	-830.00
1	FID	ACIS-I-5	7.24	1492	-0.056	0.045	0.006	0.010	0.000000	0.000000	-1810.49	1067.09
2	FID	ACIS-I-6	7.26	1491	-0.031	0.006	0.006	0.011	0.000000	0.000000	401.62	1712.61
3	GUIDE	334627024	9.44	2979	-0.008	0.049	0.098	0.158	217.318801	32.278221	1396.68	1873.86
4	GUIDE	334629976	9.92	2975	0.102	0.126	0.133	0.207	217.912342	31.982896	-678.13	1562.84
5	BAD	334631560	10.52	2735	0.241	-0.424	0.194	0.338	218.111981	31.778907	-1616.21	1746.02
6	GUIDE	335027640	9.12	2980	-0.126	0.110	0.092	0.154	218.092211	33.193770	1652.16	-2160.82
7	GUIDE	335029384	8.50	2981	-0.190	0.125	0.077	0.123	217.848061	33.088477	1984.21	-1403.35

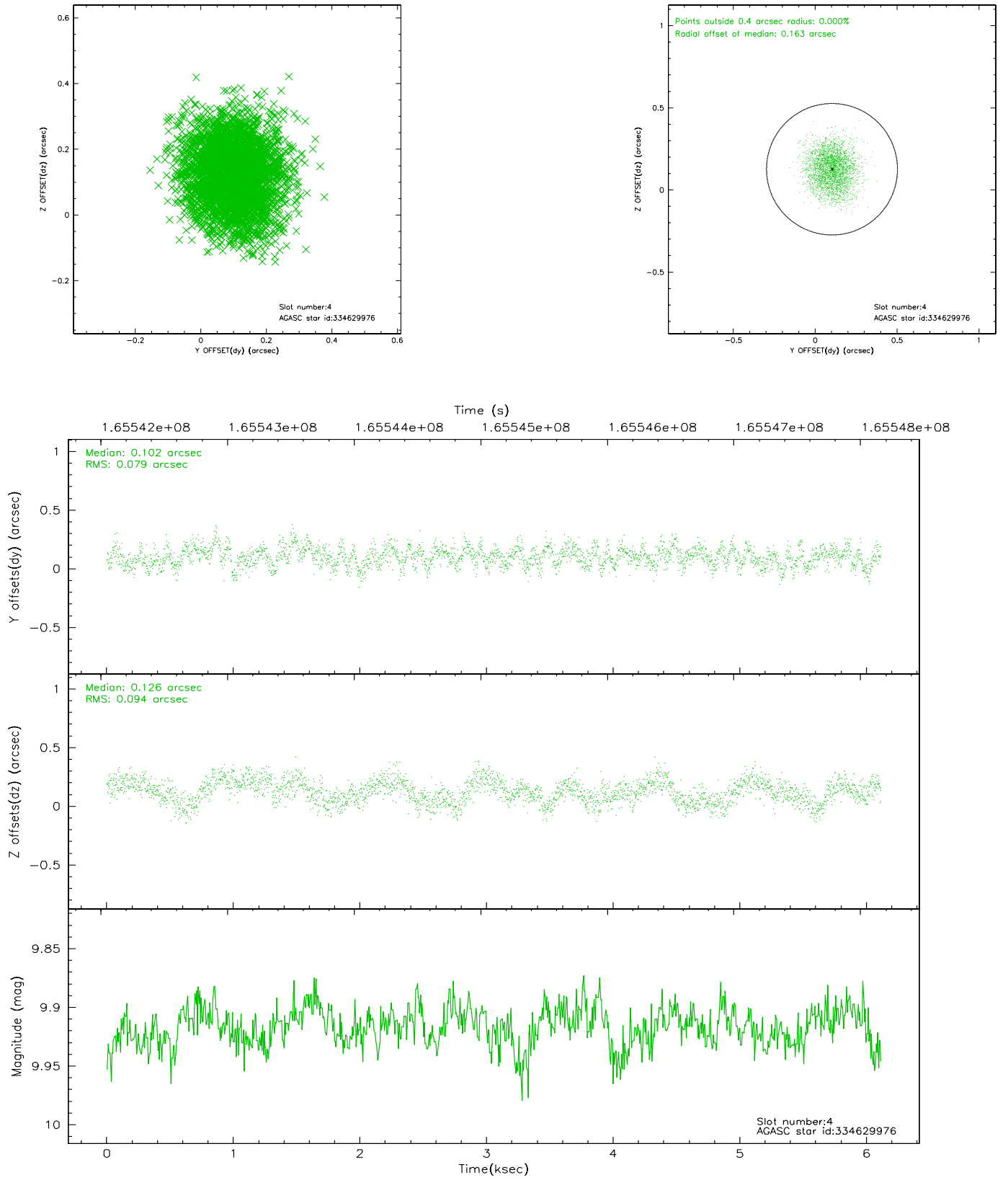


## 2.4 Star Slots

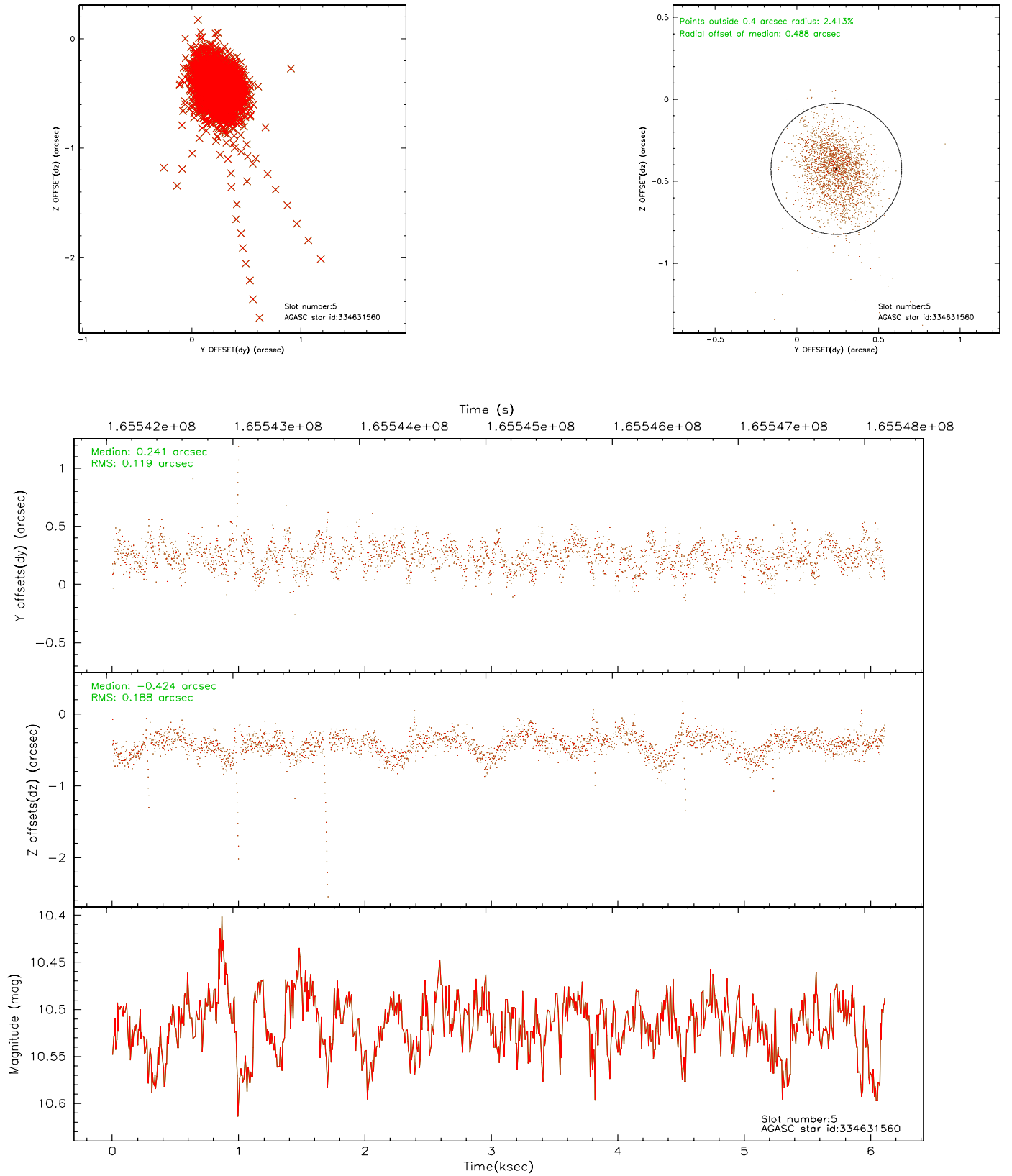
### 2.4.1 Slot 3



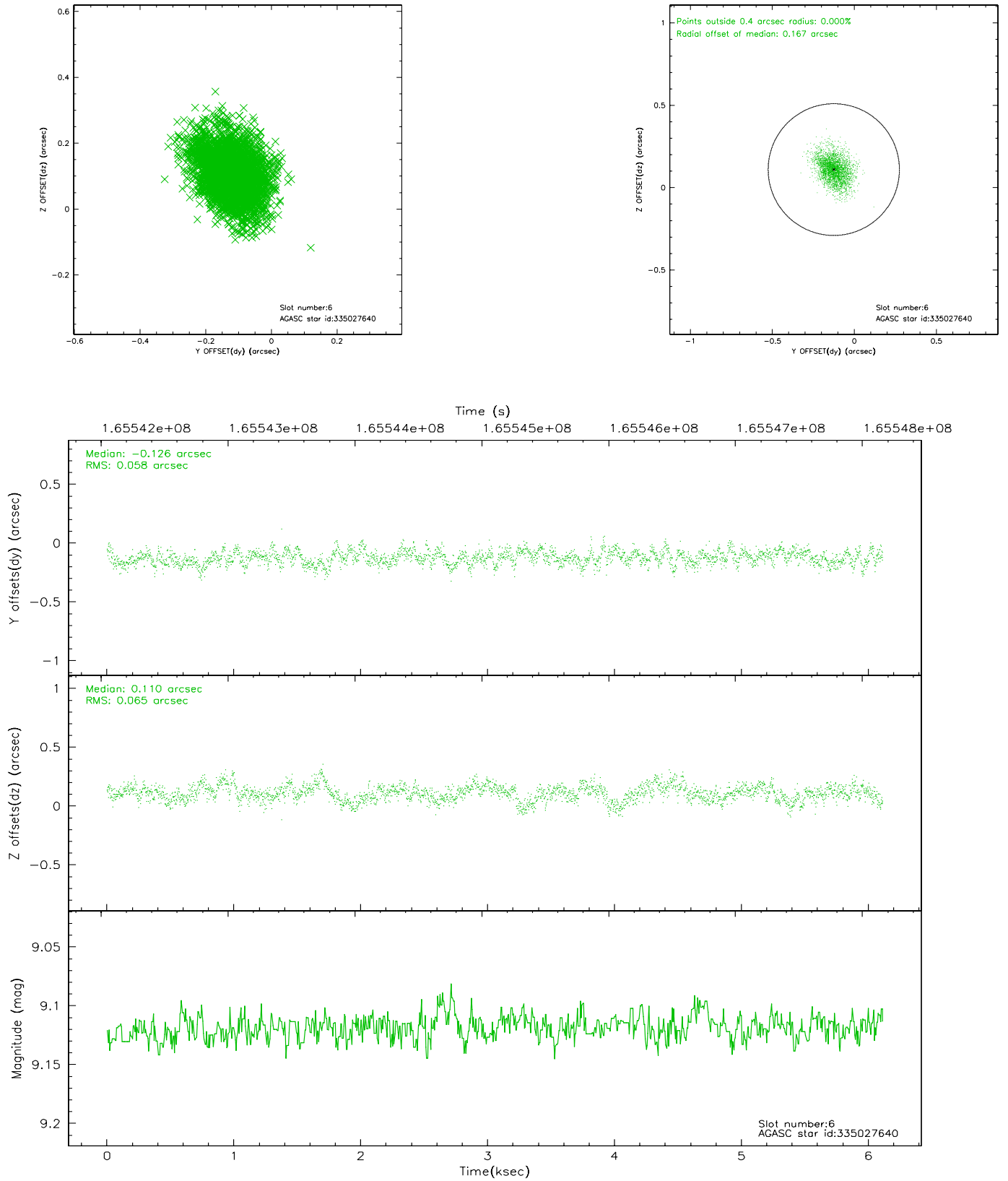
## 2.4.2 Slot 4



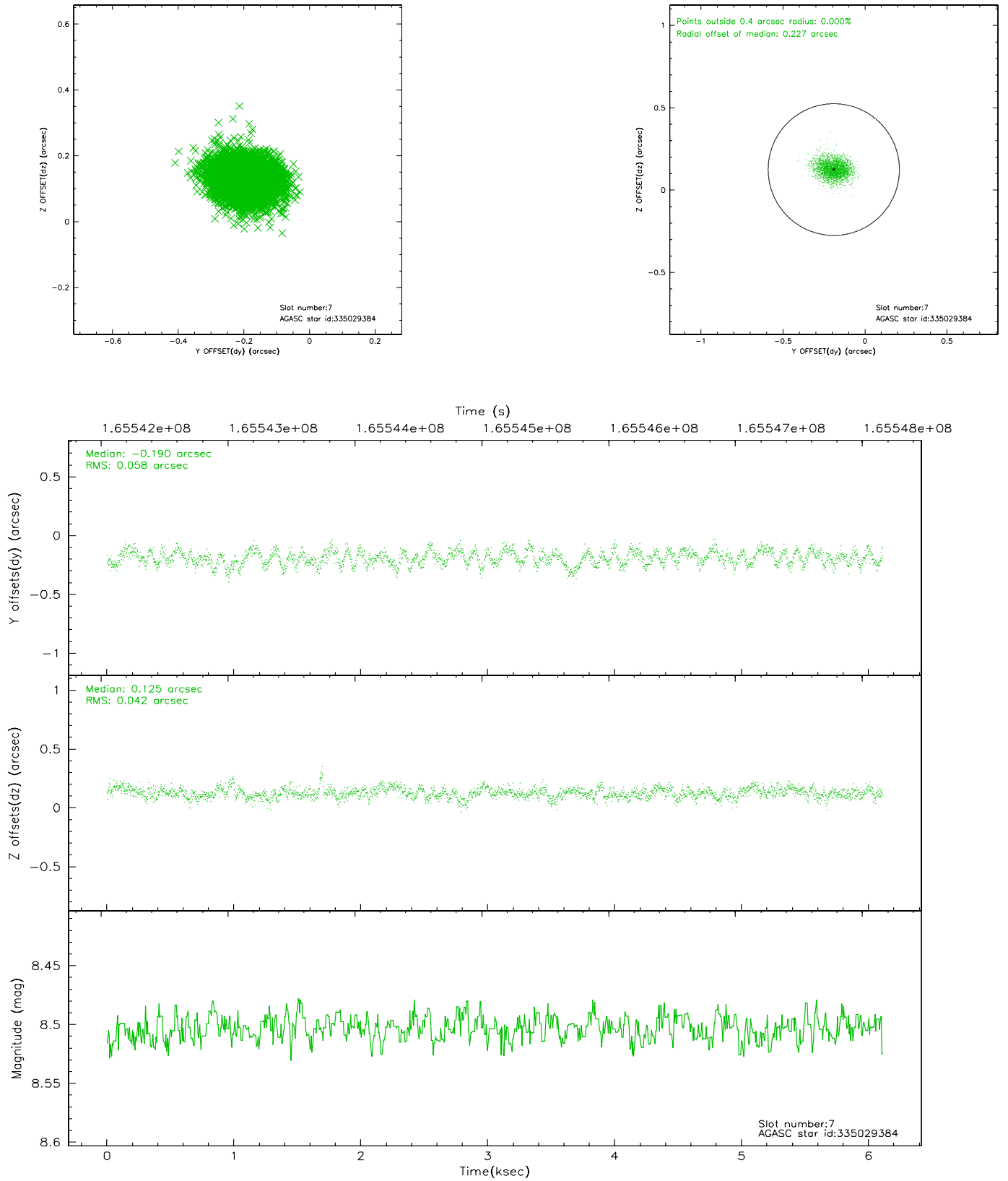
### 2.4.3 Slot 5



## 2.4.4 Slot 6

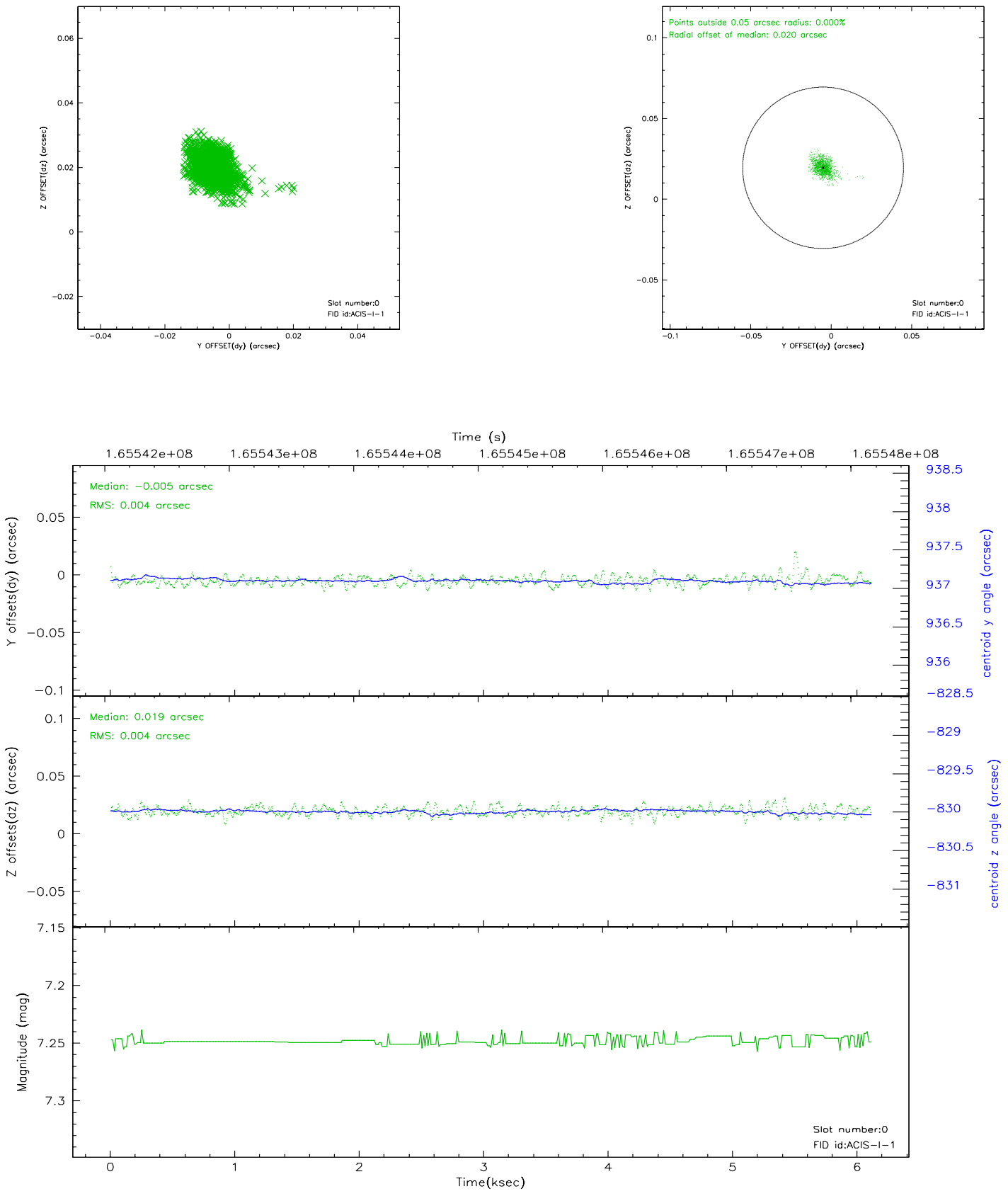


## 2.4.5 Slot 7

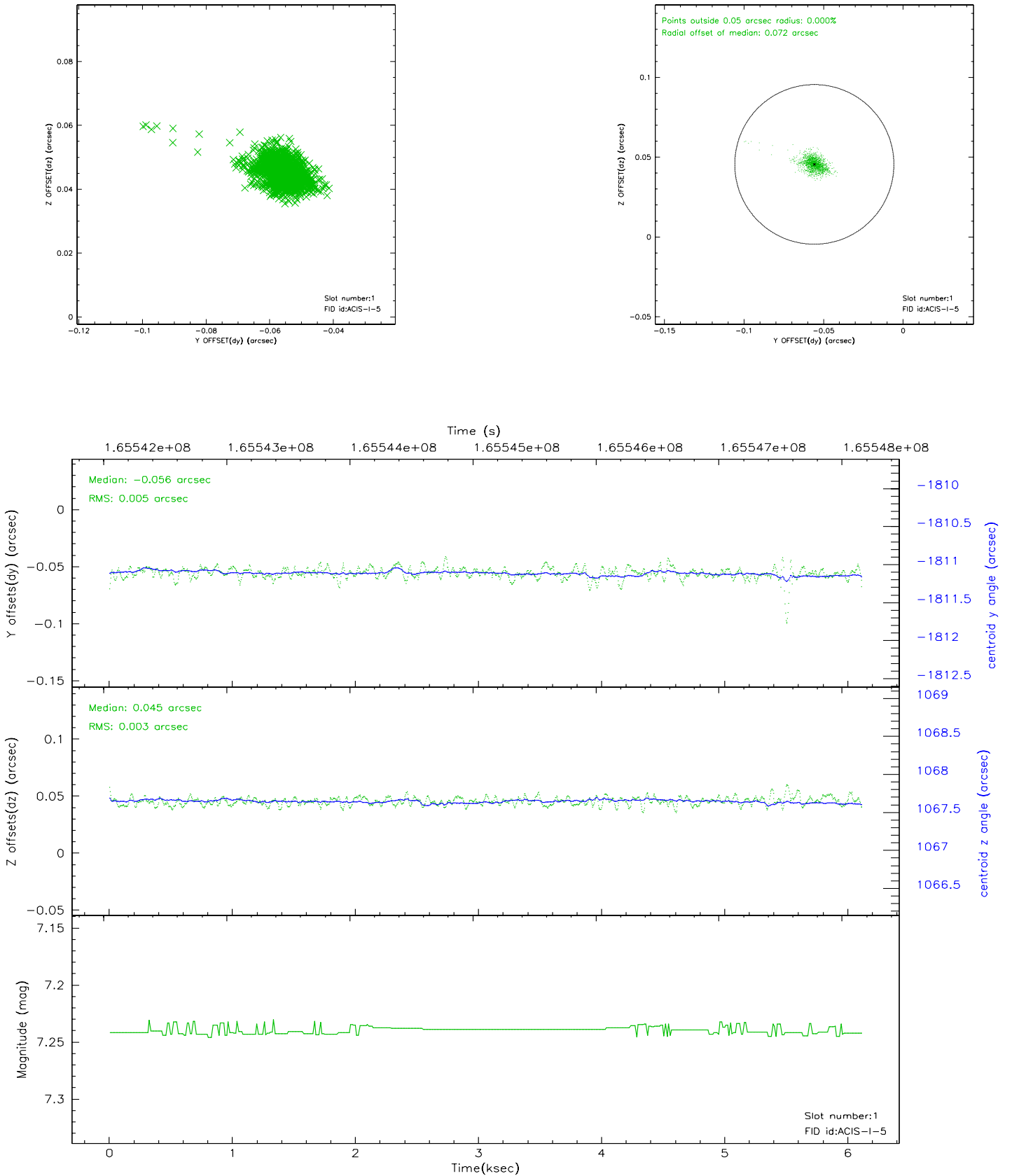


## 2.5 FID Slots

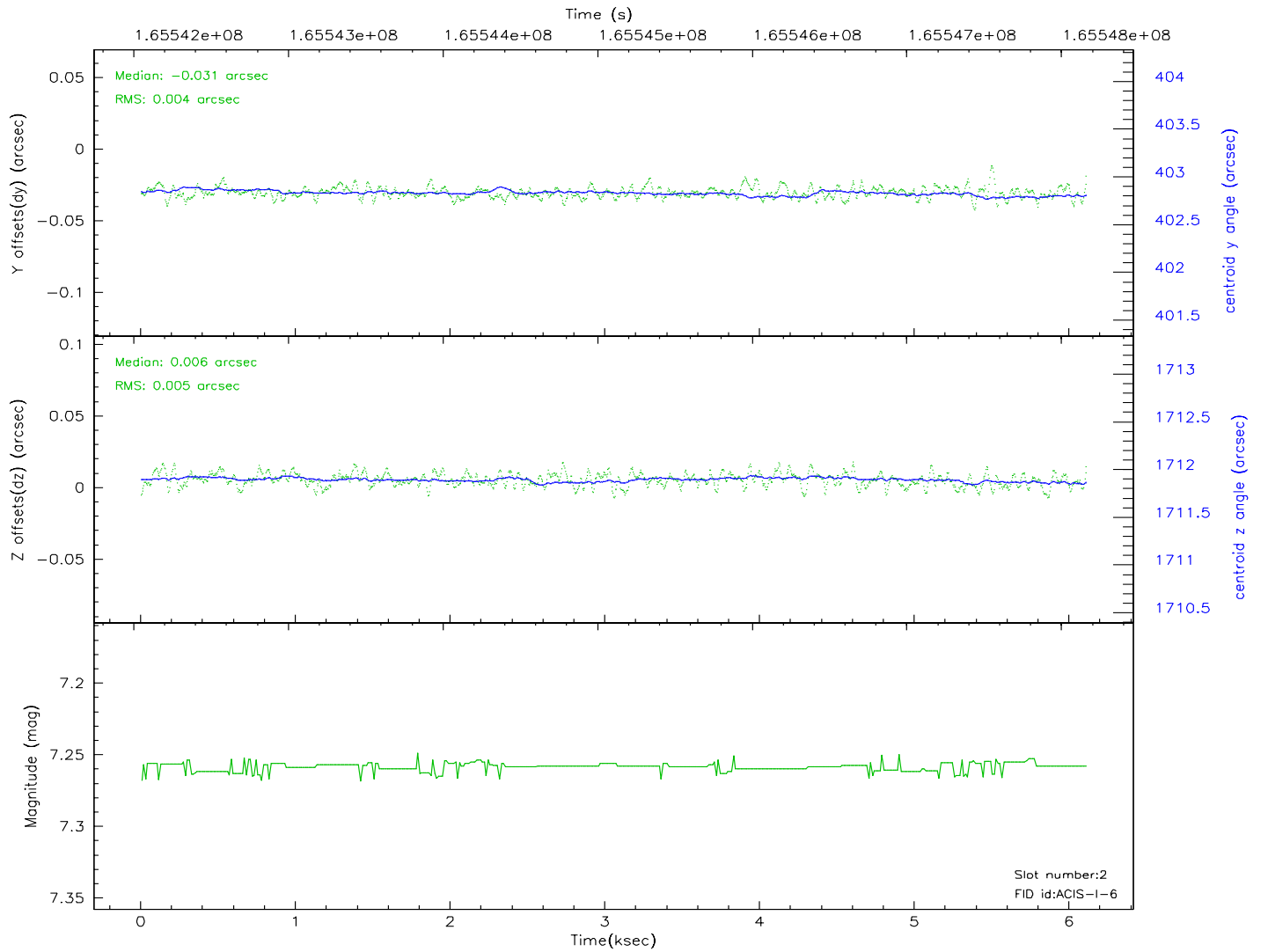
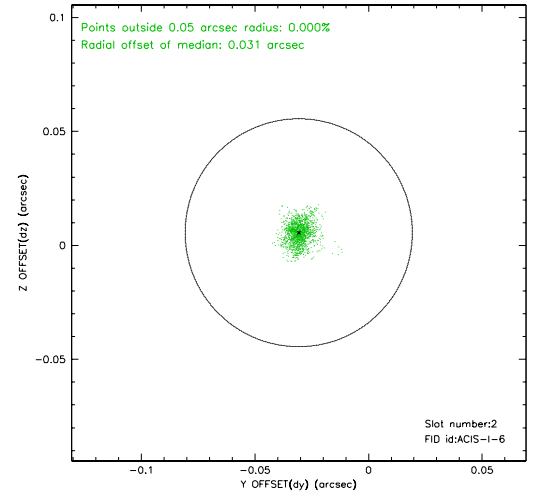
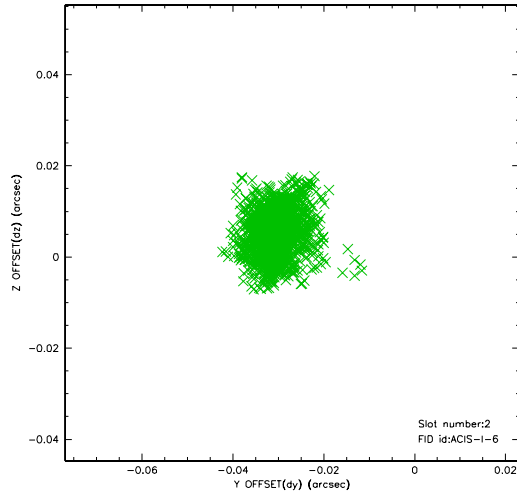
### 2.5.1 Slot 0



## 2.5.2 Slot 1



### 2.5.3 Slot 2





### 3 Point Sources

6.51 arcmin



5.78 arcmin



## A Summary

### A.1 Status

V&V Scientist	Jen Lauer
V&V Date (YYYY-MM-DD)	2006.07.30
V&V Edition	1
V&V Disposition and Status	OK
V&V Charge Time	5.02

### A.2 Comments

Slot 5 was only tracked for 90% of the aspect interval, and is therefore marked bad and not included in the aspect solution.