

V&V Reference Report

L2 ASCDS Version : 7.6.8

Observation 4268 - L2 Version 001
Chandra X-Ray Center

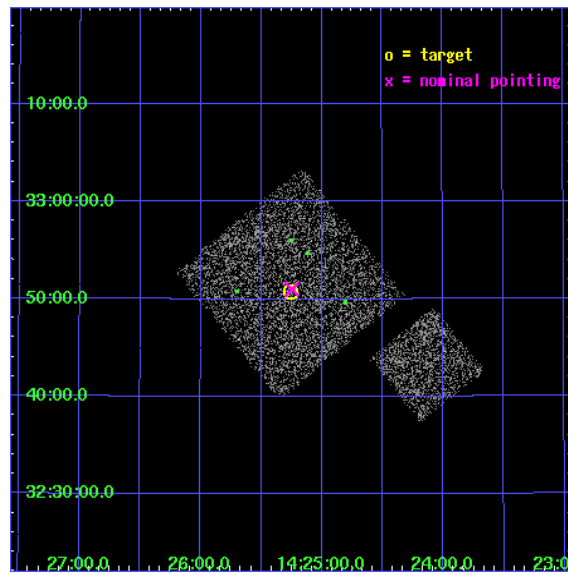
L2 Processing Date : Jul 29 2006

Contents

| | | |
|----------|-------------------------------|-----------|
| 1 | Front | 2 |
| 2 | OBI | 3 |
| 2.1 | OBI | 3 |
| 2.1.1 | Images | 3 |
| 2.1.2 | Bias | 3 |
| 2.1.3 | Parameters | 4 |
| 2.1.4 | Events | 4 |
| 2.2 | Compared Parameters | 5 |
| 2.3 | Aspect | 6 |
| 2.4 | Star Slots | 9 |
| 2.4.1 | Slot 3 | 9 |
| 2.4.2 | Slot 4 | 10 |
| 2.4.3 | Slot 5 | 11 |
| 2.4.4 | Slot 6 | 12 |
| 2.4.5 | Slot 7 | 13 |
| 2.5 | FID Slots | 14 |
| 2.5.1 | Slot 0 | 14 |
| 2.5.2 | Slot 1 | 15 |
| 2.5.3 | Slot 2 | 16 |
| 3 | Point Sources | 17 |
| A | Summary | 18 |
| A.1 | Status | 18 |
| A.2 | Comments | 18 |

1 Front

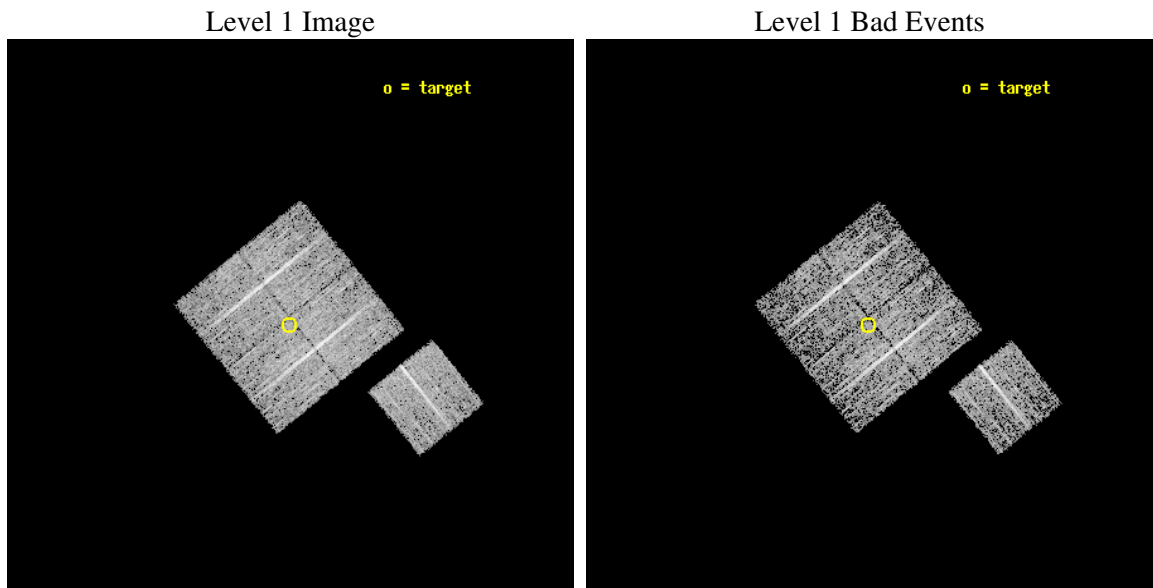
| | |
|----------|--|
| seq_num | 900311 |
| obs_id | 4268 |
| title | A CHANDRA WIDE-FIELD SURVEY TO MAP THE COSMIC WEB AND INVESTIGATE THE EVOLUTION OF NUCLEAR ACCRETION |
| observer | Dr. Christine Jones |
| object | SS11 |
| dtcycle | 0 |
| cycle | P |
| ra_targ | 216.314346 |
| dec_targ | 32.845836 |
| ra_nom | 216.3118012245 |
| dec_nom | 32.849884708046 |
| roll_nom | 141.01013777144 |
| revision | 2 |
| ontime | 4770.8180103302 |
| livetime | 4708.4837608001 |
| ontime0 | 4777.0999908149 |
| ontime1 | 4777.0999908149 |
| ontime2 | 4770.8180103898 |
| ontime3 | 4770.8180103302 |
| ontime6 | 4777.0999908149 |
| l2events | 9735 |



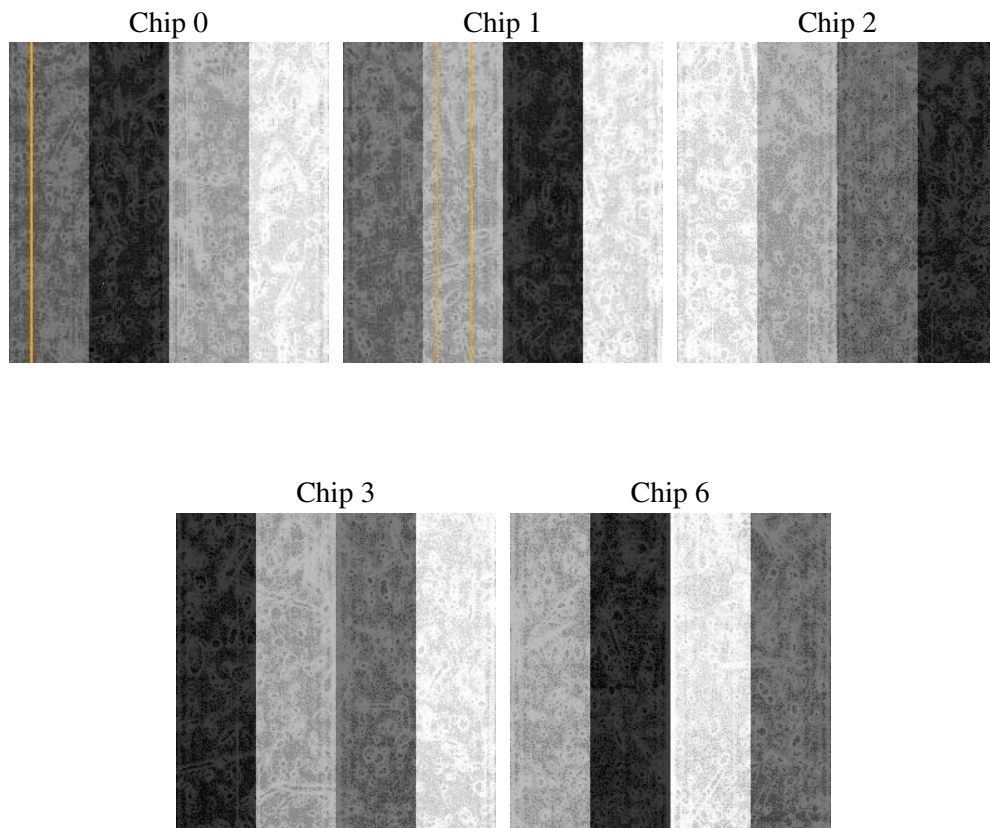
2 OBI

2.1 OBI

2.1.1 Images



2.1.2 Bias



2.1.3 Parameters

| | |
|----------|---------------------|
| obi_num | 0 |
| ascdsver | 7.6.8 |
| caldbver | 3.2.2 |
| date | 2006-07-29T16:13:56 |
| revision | 2 |

| | |
|----------------|-----------------|
| sched_exp_time | 5000.000000 |
| ontime | 4774.3414209485 |
| ontime0 | 4780.6234014332 |
| ontime1 | 4780.6234014332 |
| ontime2 | 4774.3414210081 |
| ontime3 | 4774.3414209485 |
| ontime6 | 4780.6234014332 |
| l1events | 120839 |

2.1.4 Events

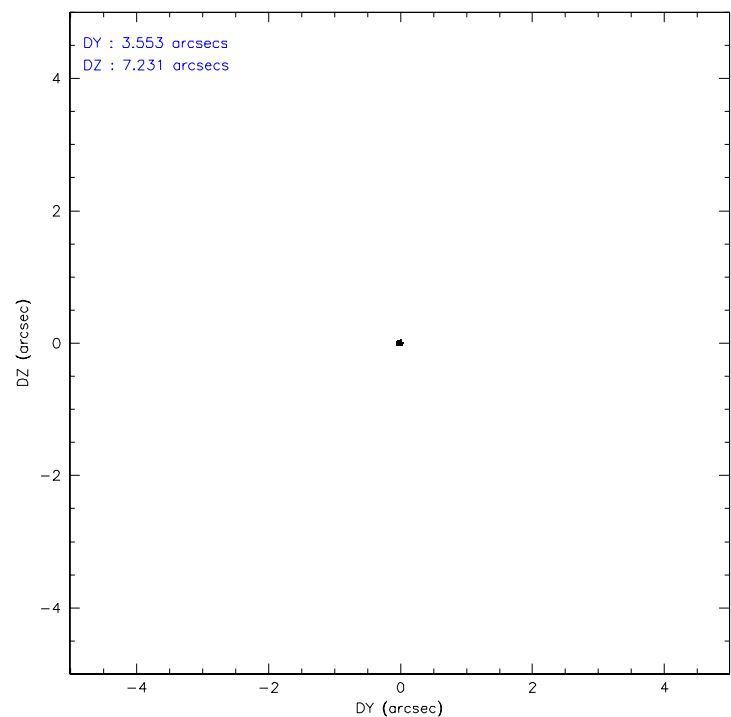
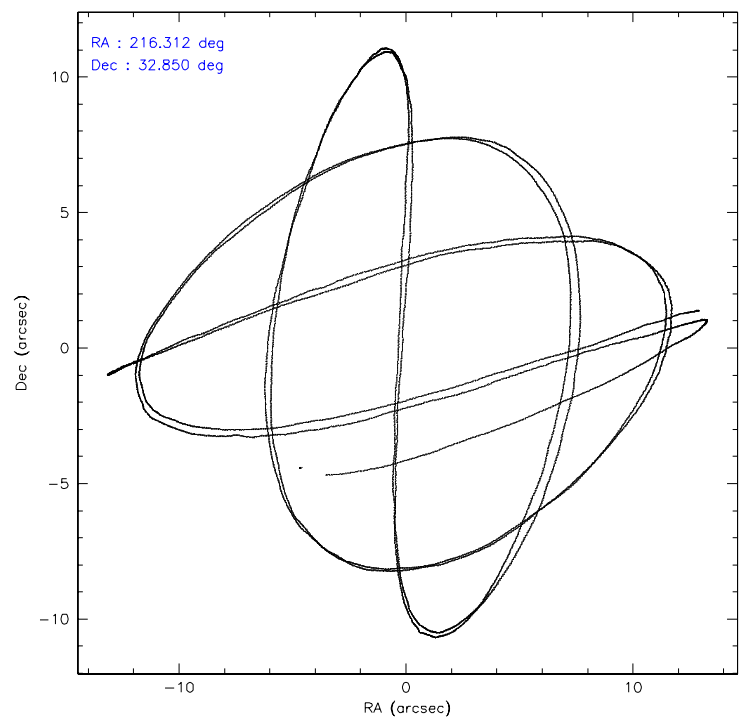
| | ccd 0 | ccd 1 | ccd 2 | ccd 3 | ccd 6 |
|-----------------|-------|-------|-------|-------|-------|
| level 1 events | 23773 | 21912 | 26214 | 24545 | 24395 |
| rejected events | 21373 | 19420 | 23808 | 22269 | 21938 |
| rejected % | 89% | 88% | 90% | 90% | 89% |

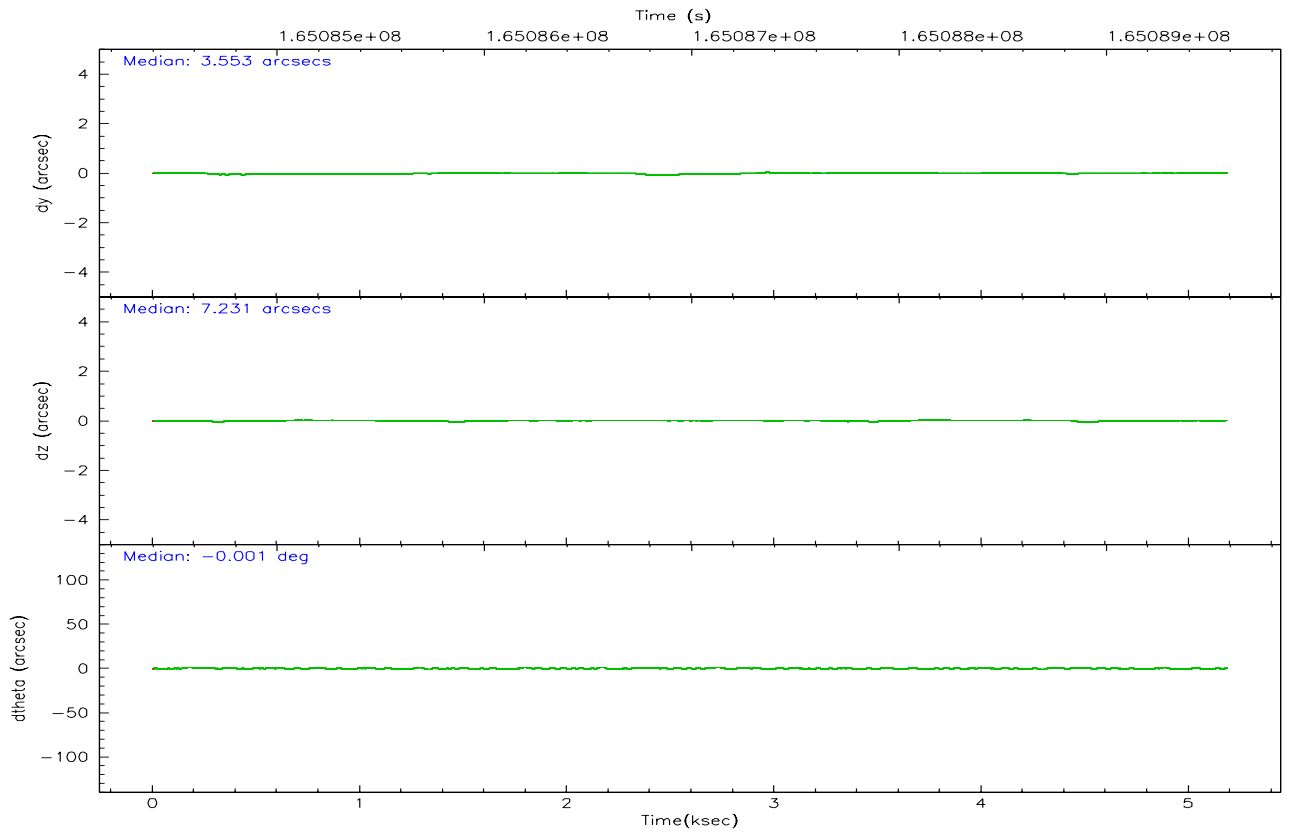
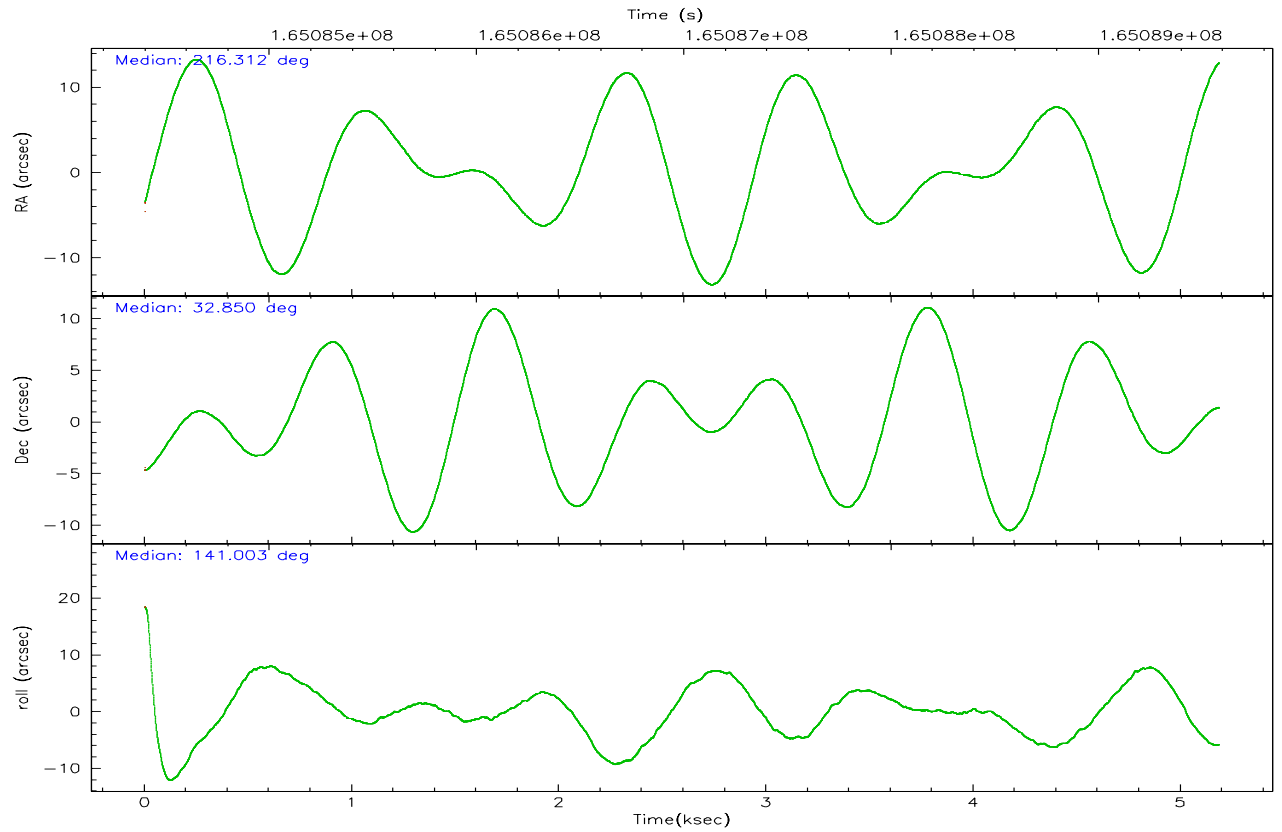
| | ccd 0 | ccd 1 | ccd 2 | ccd 3 | ccd 6 |
|----------------|-------|-------|-------|-------|-------|
| grade 0 events | 851 | 907 | 917 | 880 | 938 |
| | 3% | 4% | 3% | 3% | 3% |
| grade 1 events | 11 | 8 | 13 | 13 | 8 |
| | 0% | 0% | 0% | 0% | 0% |
| grade 2 events | 534 | 534 | 559 | 444 | 469 |
| | 2% | 2% | 2% | 1% | 1% |
| grade 3 events | 291 | 300 | 266 | 261 | 298 |
| | 1% | 1% | 1% | 1% | 1% |
| grade 4 events | 281 | 276 | 285 | 254 | 278 |
| | 1% | 1% | 1% | 1% | 1% |
| grade 5 events | 696 | 788 | 661 | 775 | 783 |
| | 2% | 3% | 2% | 3% | 3% |
| grade 6 events | 445 | 480 | 382 | 439 | 475 |
| | 1% | 2% | 1% | 1% | 1% |
| grade 7 events | 20664 | 18619 | 23131 | 21479 | 21146 |
| | 86% | 84% | 88% | 87% | 86% |

2.2 Compared Parameters

| Parameter | Planned | Actual | Parameter | Planned | Actual |
|-----------------------------------|---------------------|-----------------------|---------------------------------|-----------|---------|
| Instrument | ACIS | ACIS | Obspar format version number | 6 | 6 |
| Detector | ACIS-01236 | ACIS-01236 | Obspar file type | PREDICTED | ACTUAL |
| Grating | NONE | NONE | Obspar update status | NONE | UPDATED |
| Data mode | VFAINT | VFAINT | On-chip summing requested | N | N |
| Observation mode | POINTING | POINTING | Subarray requested | NONE | NONE |
| Pointing RA | 216.343970 | 216.3118012245035 | Alternating exposures requested | N | N |
| Pointing Dec | 32.845757 | 32.8498847080464 | Primary exposure time | 0.000000 | 3.1 |
| Pointing Roll | 140.783932 | 141.0101377714402 | | | |
| SIM focus pos (mm) | -0.782348 | -0.7809083437167272 | | | |
| SIM defocus (mm) | 0 | 0.001439871863259334 | | | |
| SIM translation stage pos (mm) | -233.592463 | -233.5874344608287 | | | |
| SIM translation stage offset (mm) | 0 | -0.005018542100998502 | | | |
| Observation start time | 165084589.184000 | 165084213.69953 | | | |
| Observation start date | 2003-03-26T16:48:45 | 2003-03-26T16:43:33 | | | |
| Observation end time | 165089589.184000 | 165089723.58726 | | | |
| Observation end date | 2003-03-26T18:12:05 | 2003-03-26T18:15:23 | | | |
| Read mode | TIMED | TIMED | | | |

2.3 Aspect



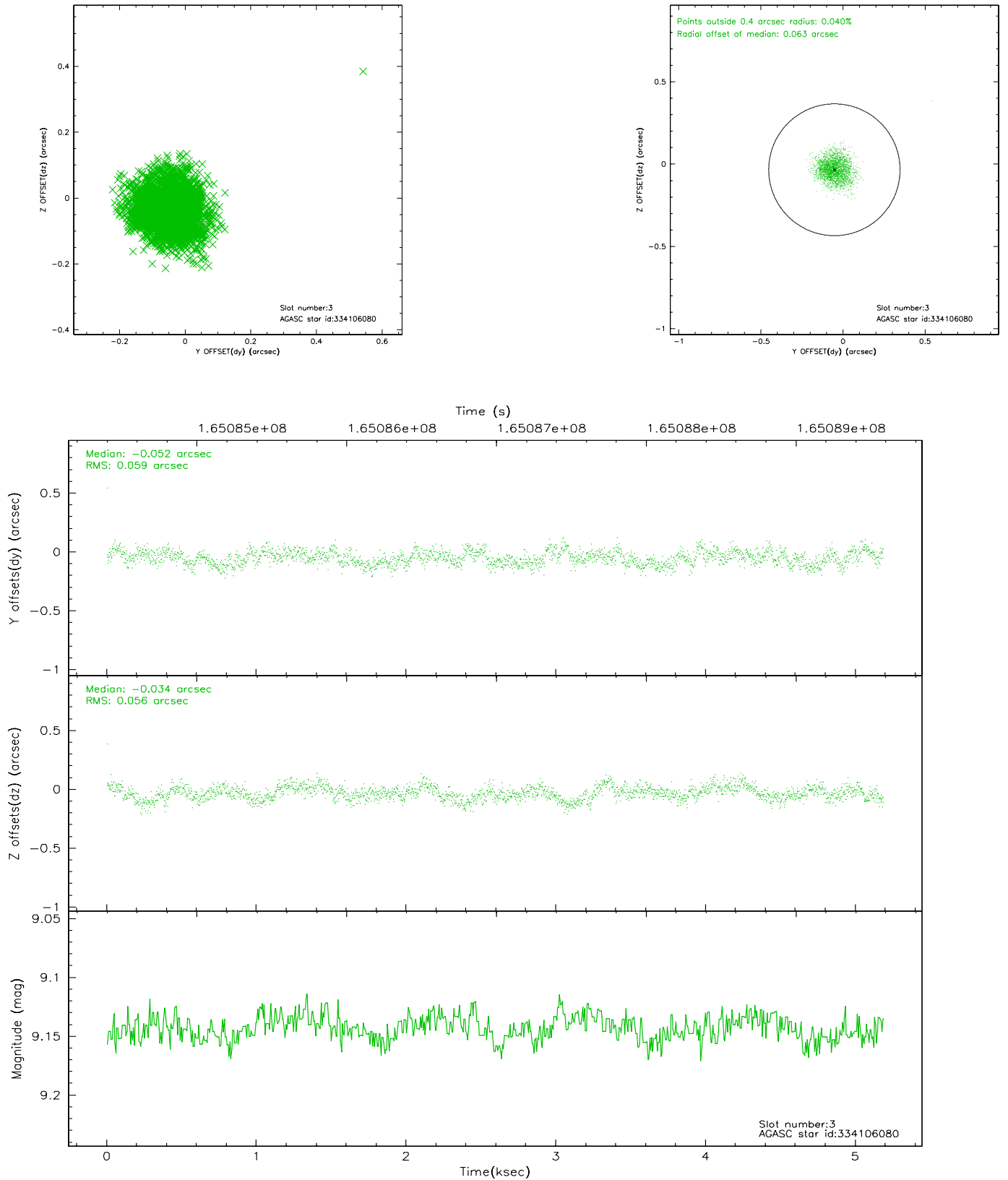


Slot Statistics

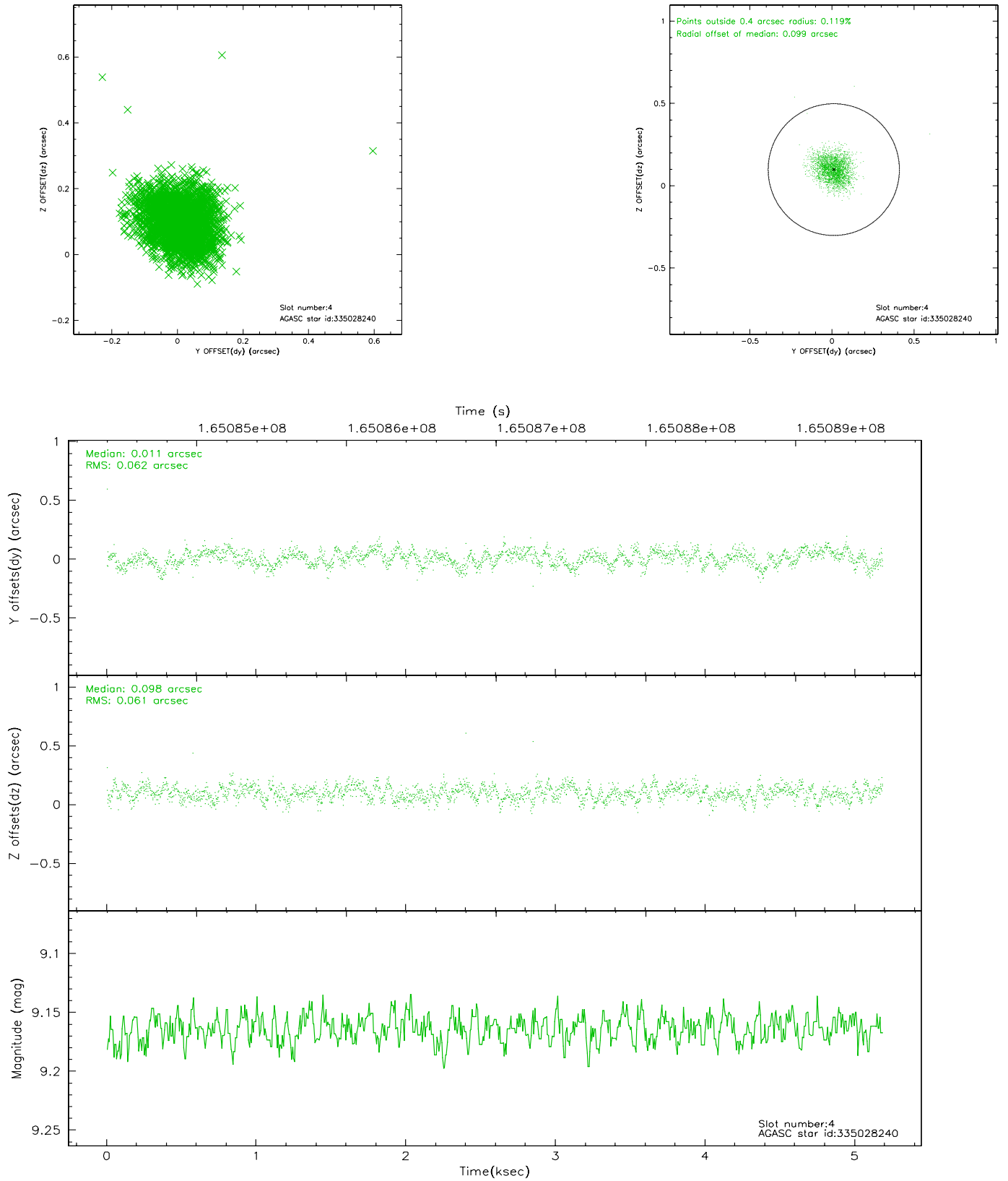
| slot | status | id | mag | n_pts | med_dy | med_dz | dr1 | dr2 | ra | dec | mean_y | mean_z |
|------|--------|-----------|-------|-------|--------|--------|-------|-------|------------|-----------|----------|----------|
| 0 | FID | ACIS-I-1 | 7.25 | 1265 | 0.000 | 0.042 | 0.006 | 0.010 | 0.000000 | 0.000000 | 936.22 | -830.60 |
| 1 | FID | ACIS-I-5 | 7.24 | 1265 | -0.065 | 0.055 | 0.006 | 0.009 | 0.000000 | 0.000000 | -1811.27 | 1066.36 |
| 2 | FID | ACIS-I-6 | 7.26 | 1265 | -0.027 | -0.027 | 0.006 | 0.011 | 0.000000 | 0.000000 | 400.51 | 1712.07 |
| 3 | GUIDE | 334106080 | 9.14 | 2529 | -0.052 | -0.034 | 0.087 | 0.135 | 215.767785 | 32.987168 | 1673.11 | 702.46 |
| 4 | GUIDE | 335028240 | 9.16 | 2528 | 0.011 | 0.098 | 0.090 | 0.145 | 216.746851 | 33.385009 | 292.10 | -2270.80 |
| 5 | GUIDE | 335029368 | 10.17 | 2530 | 0.042 | 0.248 | 0.116 | 0.189 | 217.181018 | 33.065030 | -1450.39 | -2216.56 |
| 6 | GUIDE | 333710328 | 9.31 | 2529 | -0.115 | -0.252 | 0.122 | 0.195 | 215.919797 | 32.382995 | -52.76 | 2103.28 |
| 7 | GUIDE | 334627032 | 9.93 | 2529 | 0.107 | -0.060 | 0.136 | 0.220 | 216.632536 | 32.266744 | -1997.39 | 1059.52 |

2.4 Star Slots

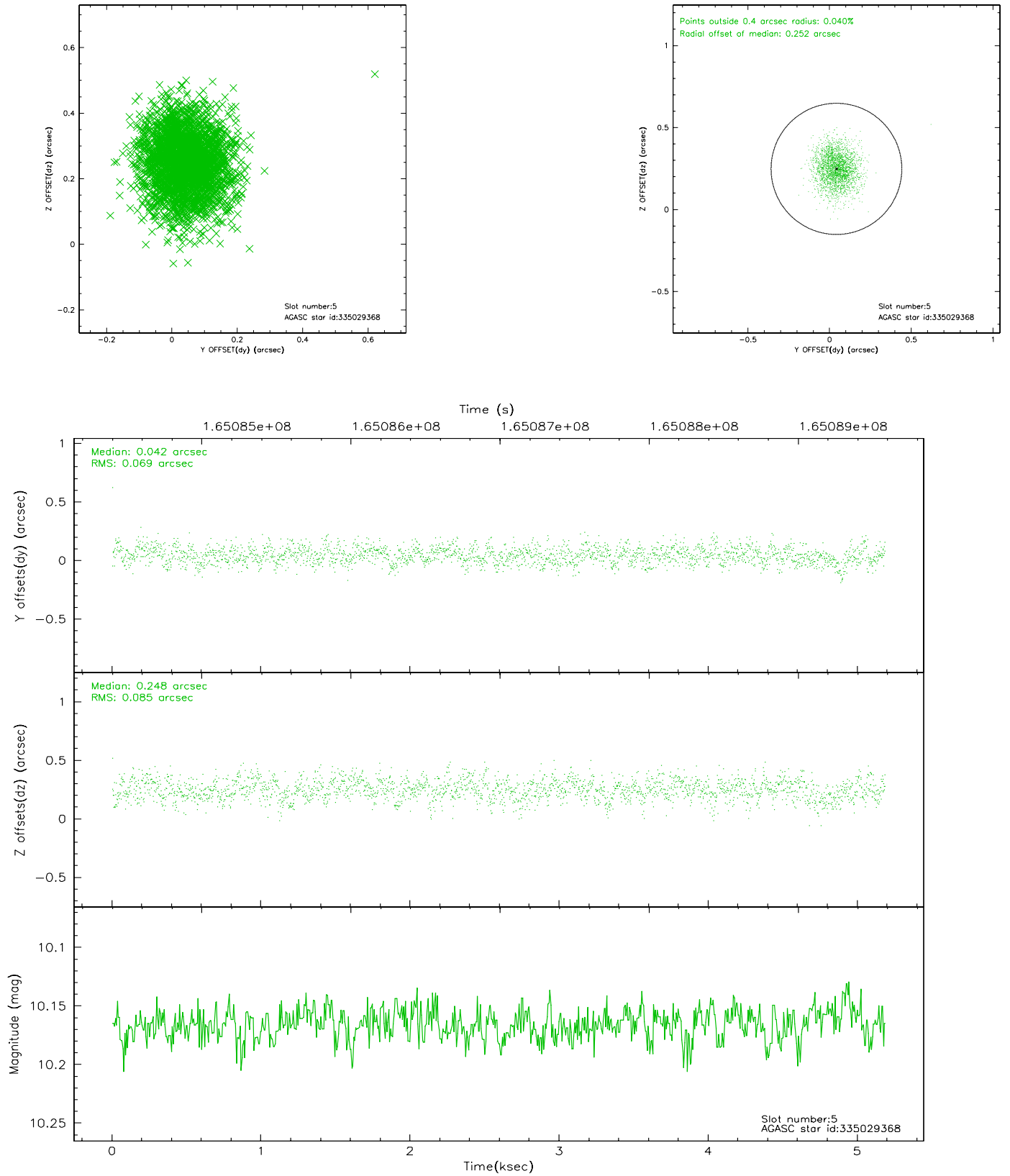
2.4.1 Slot 3



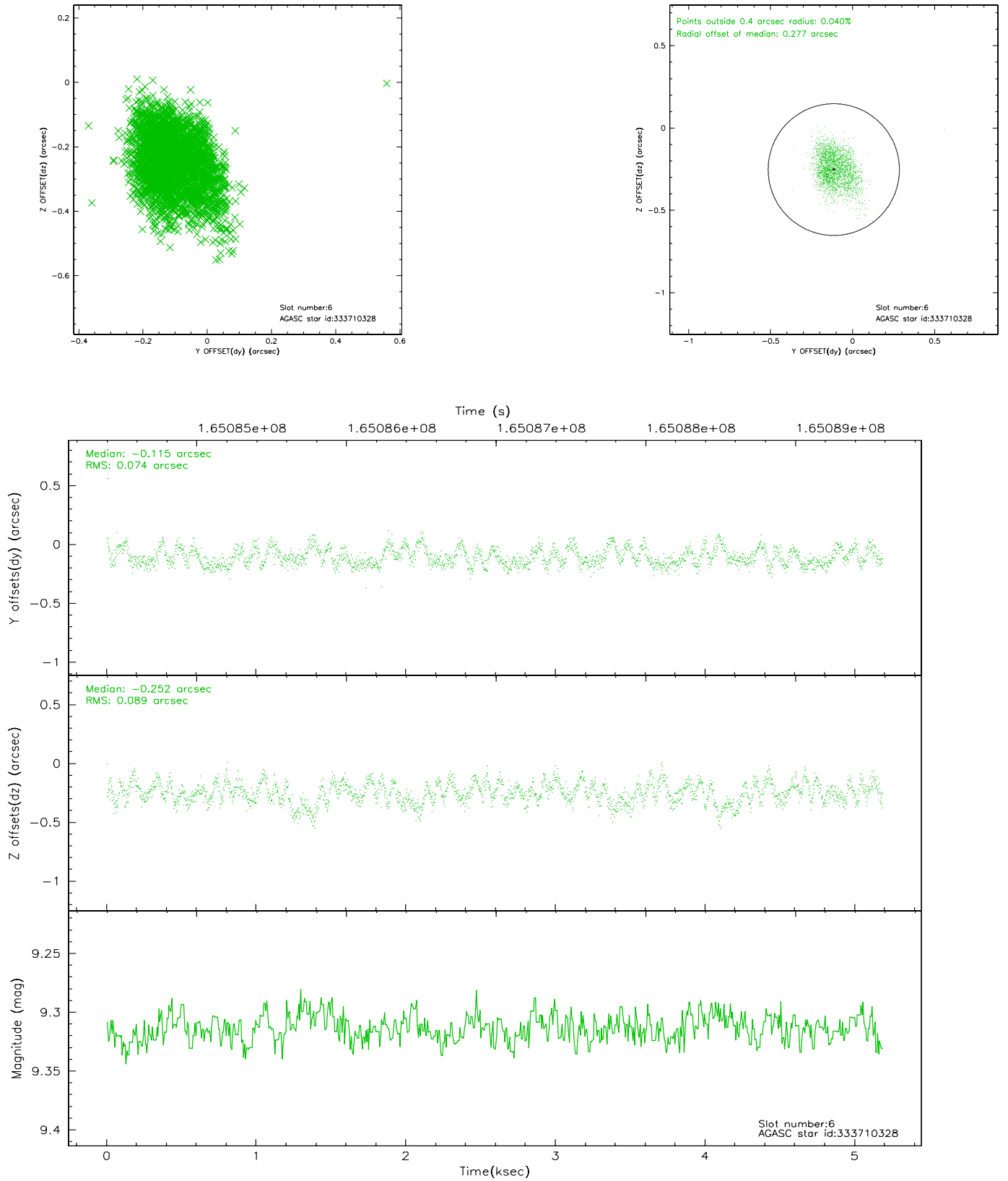
2.4.2 Slot 4



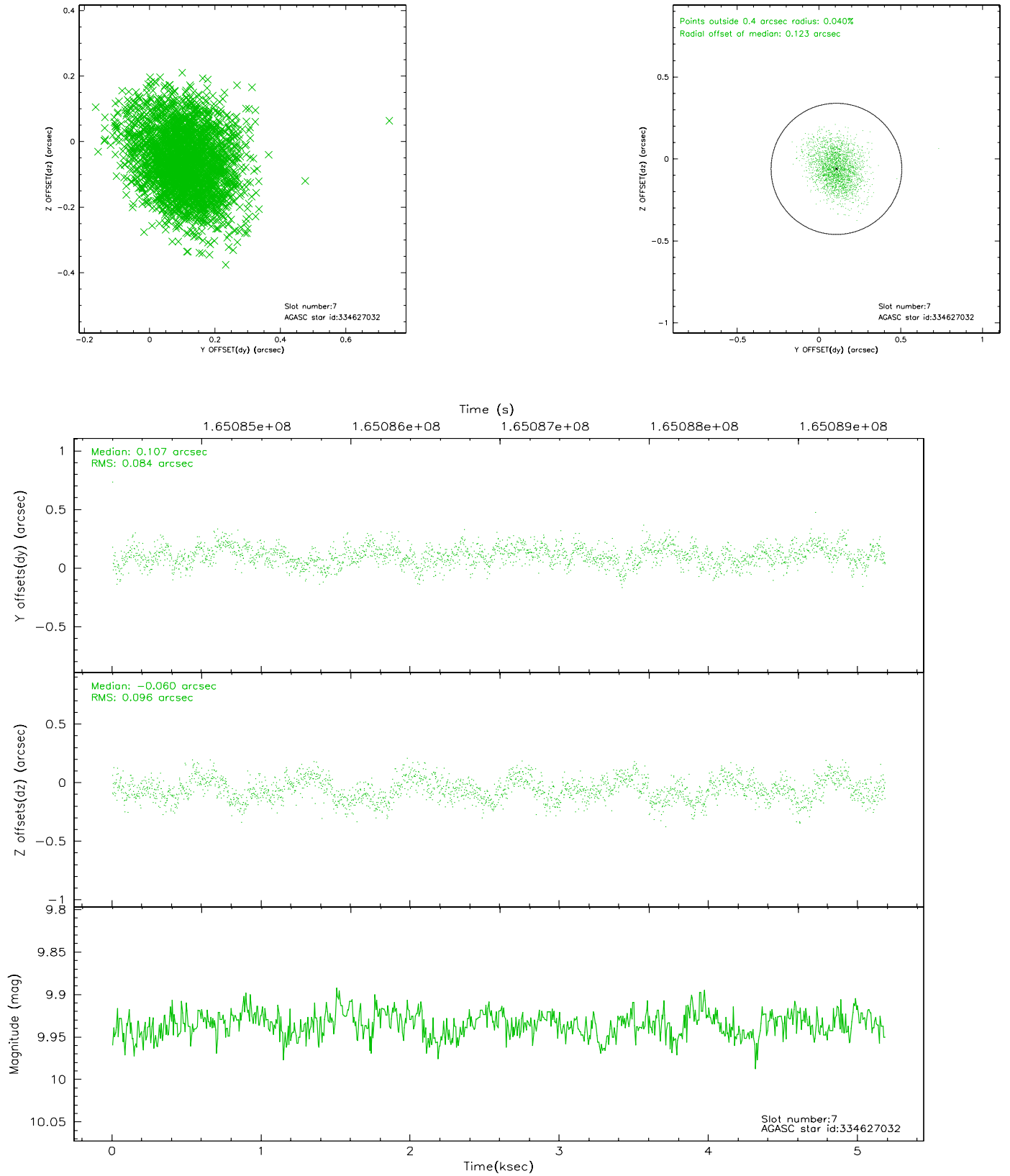
2.4.3 Slot 5



2.4.4 Slot 6

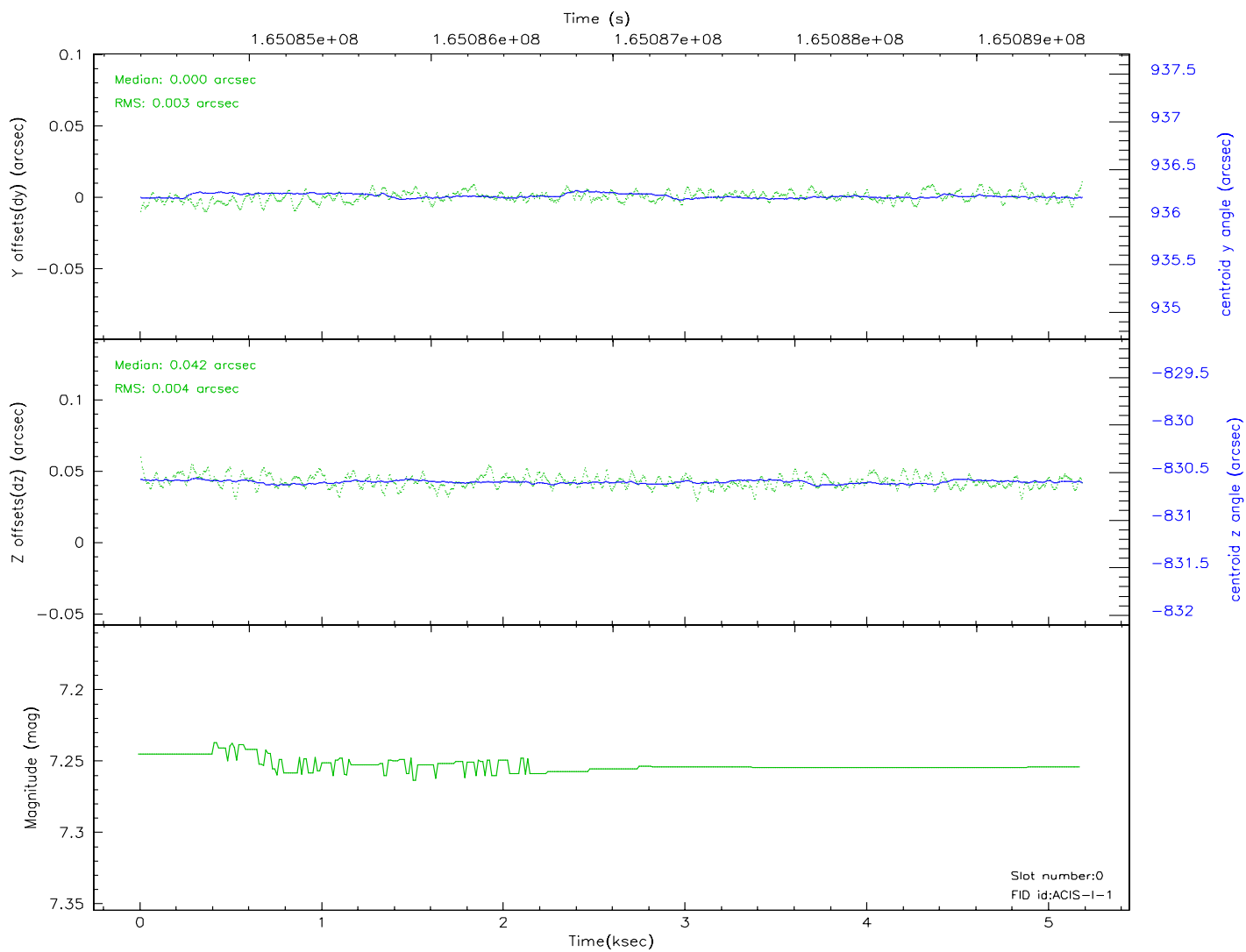
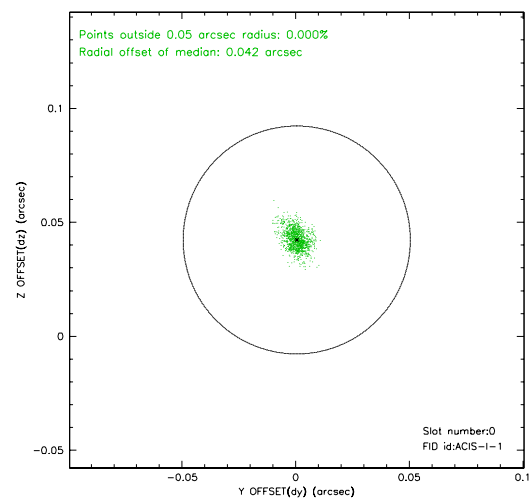
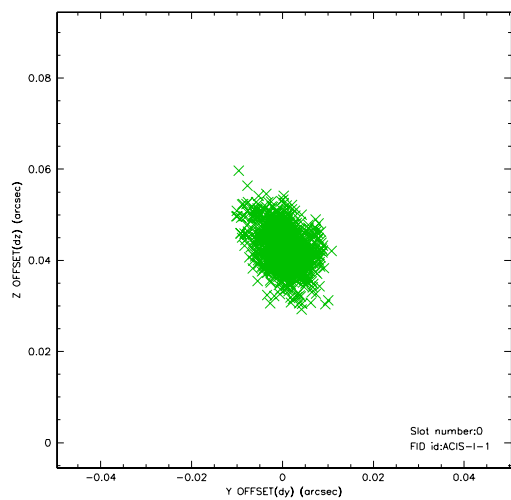


2.4.5 Slot 7

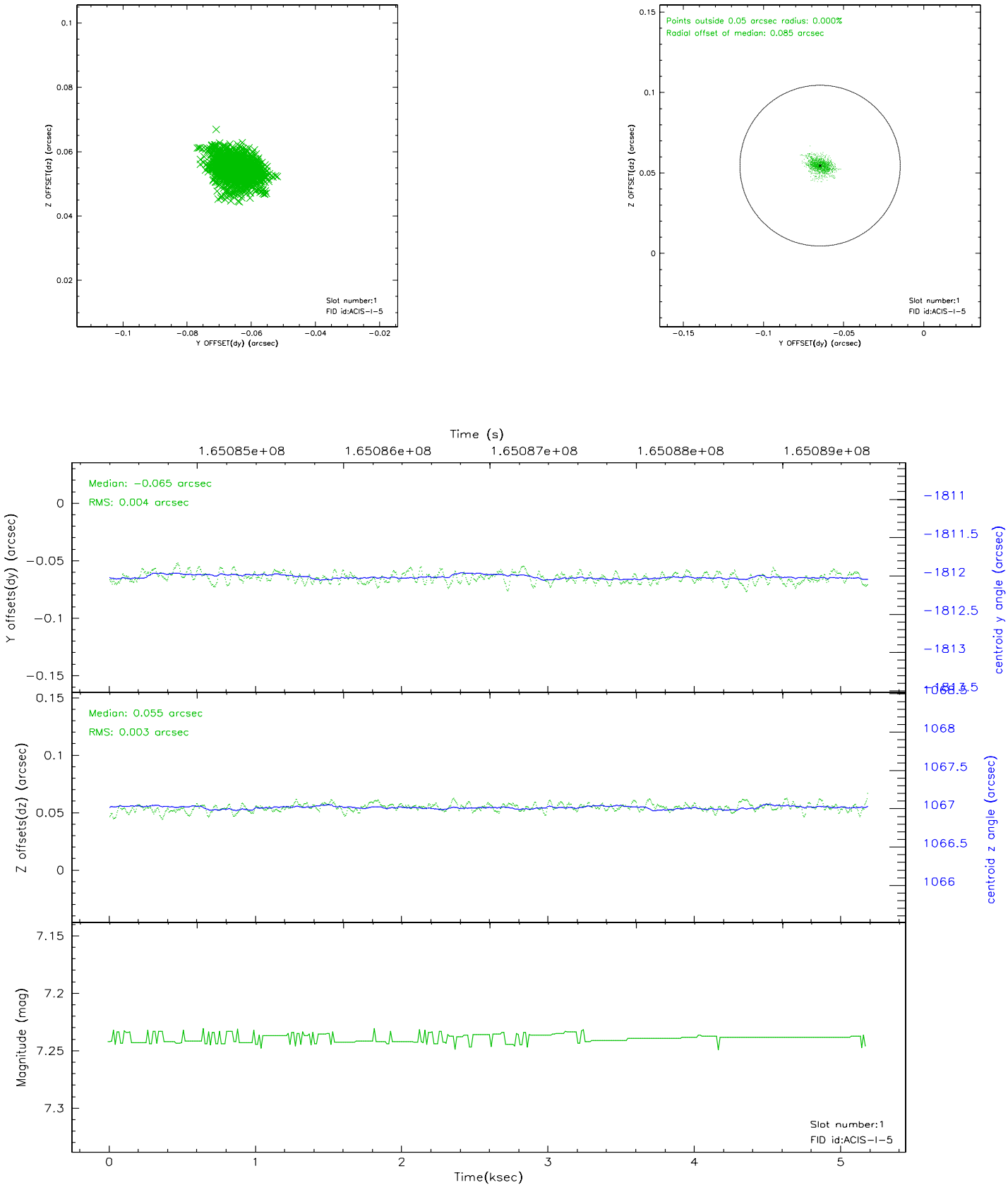


2.5 FID Slots

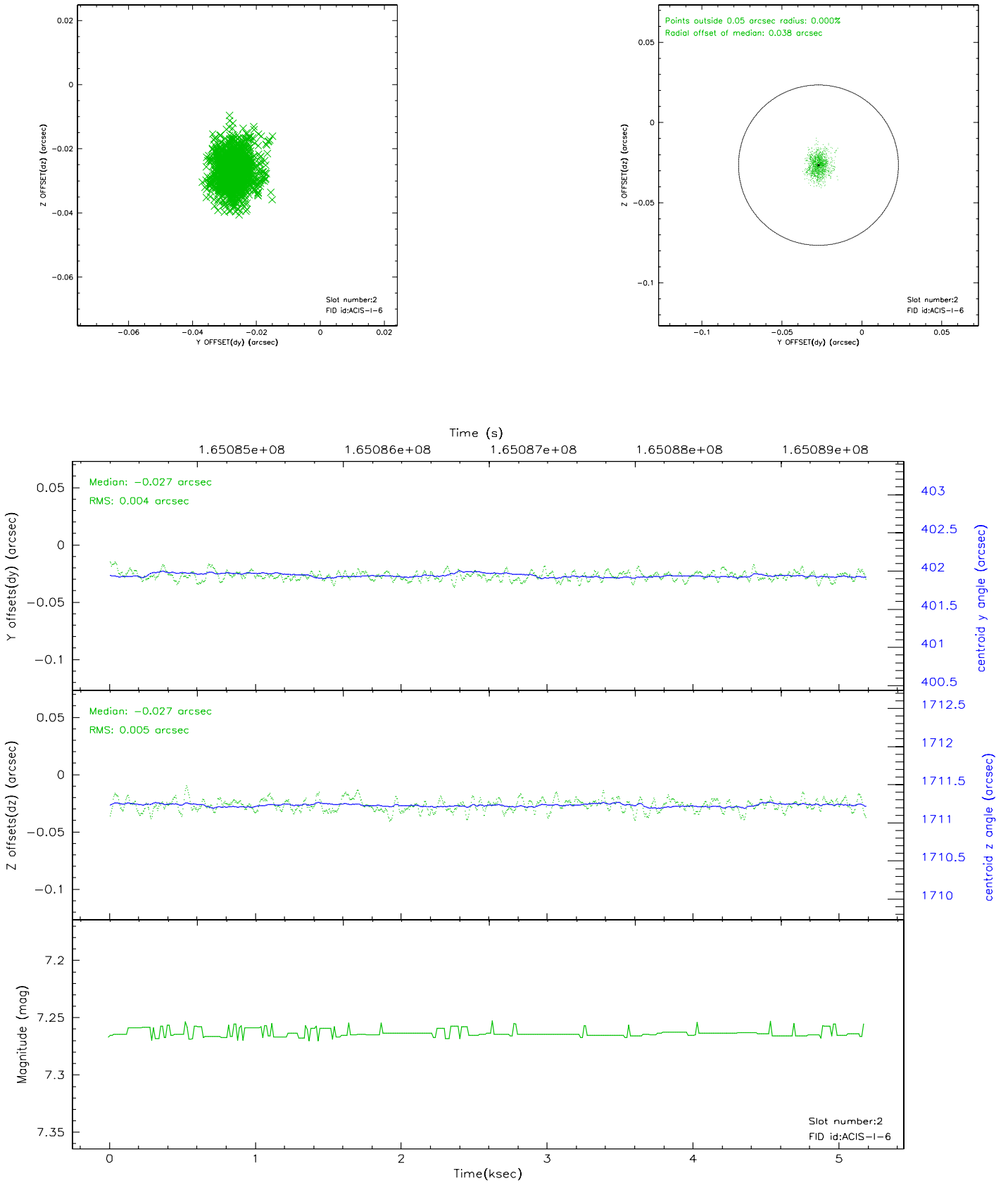
2.5.1 Slot 0



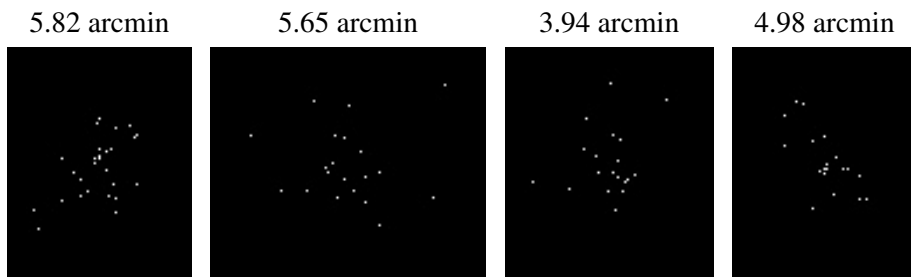
2.5.2 Slot 1



2.5.3 Slot 2



3 Point Sources



A Summary

A.1 Status

| | |
|----------------------------|------------|
| V&V Scientist | Jen Lauer |
| V&V Date (YYYY-MM-DD) | 2006.07.30 |
| V&V Edition | 1 |
| V&V Disposition and Status | OK |
| V&V Charge Time | 4.77 |

A.2 Comments