

V&V Reference Report

L2 ASCDS Version : 8.4.5

Observation 4238 - L2 Version 4
Chandra X-Ray Center

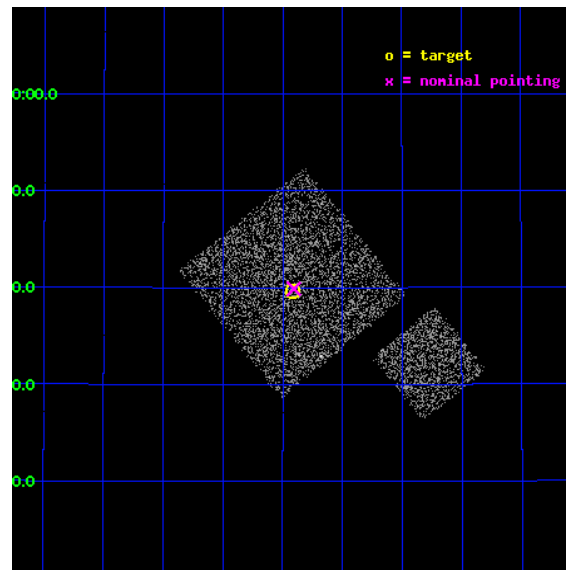
L2 Processing Date : Oct 25 2012

Contents

1	Front	2
2	OBI	3
2.1	OBI	3
2.1.1	Images	3
2.1.2	Bias	3
2.1.3	Parameters	4
2.1.4	Events	4
2.2	Compared Parameters	5
2.3	Aspect	6
2.4	Star Slots	9
2.4.1	Slot 3	9
2.4.2	Slot 4	10
2.4.3	Slot 5	11
2.4.4	Slot 6	12
2.4.5	Slot 7	13
2.5	FID Slots	14
2.5.1	Slot 0	14
2.5.2	Slot 1	15
2.5.3	Slot 2	16
A	Summary	17
A.1	Status	17
A.2	Comments	17

1 Front

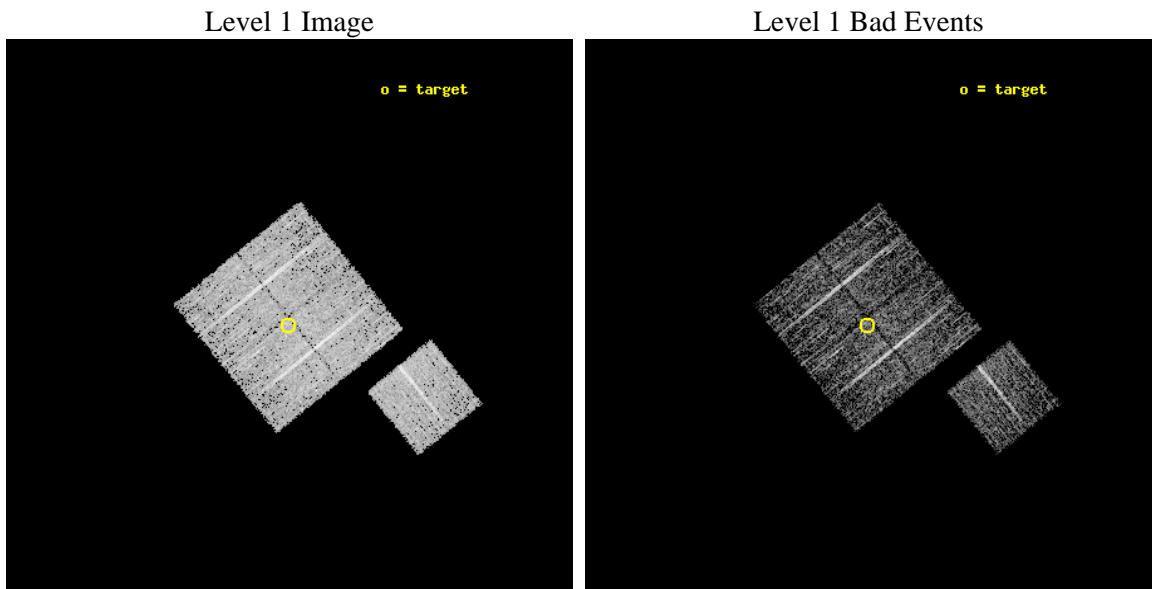
seq_num	900281	Sequence number
obs_id	4238	Observation id
title	A CHANDRA WIDE-FIELD SURVEY TO MAP THE COSMIC WEB AND INVESTIGATE THE EVOLUTION OF NUCLEAR ACCRETION	Proposal title
observer	Dr. Christine Jones	Principal investigator
object	SD49	Source name
dtcycle	0	
cycle	P	events from which exps? Prim/Second/Both
ra_targ	217.604097	Observer's specified target RA [deg]
dec_targ	33.660612	Observer's specified target Dec [deg]
ra_nom	217.60151513887	Nominal RA [deg]
dec_nom	33.664667043784	Nominal Dec [deg]
roll_nom	141.01013563378	Nominal Roll [deg]
revision	4	Processing version of data
ontime	4674.2406085134	Sum of GTIs [s]
livetime	4613.1682138373	Livetime [s]
ontime0	4674.1174885035	Sum of GTIs [s]
ontime1	4674.1585285068	Sum of GTIs [s]
ontime2	4674.1995685101	Sum of GTIs [s]
ontime3	4674.2406085134	Sum of GTIs [s]
ontime6	4674.0764485002	Sum of GTIs [s]
l2events	8977	Number of level 2 events



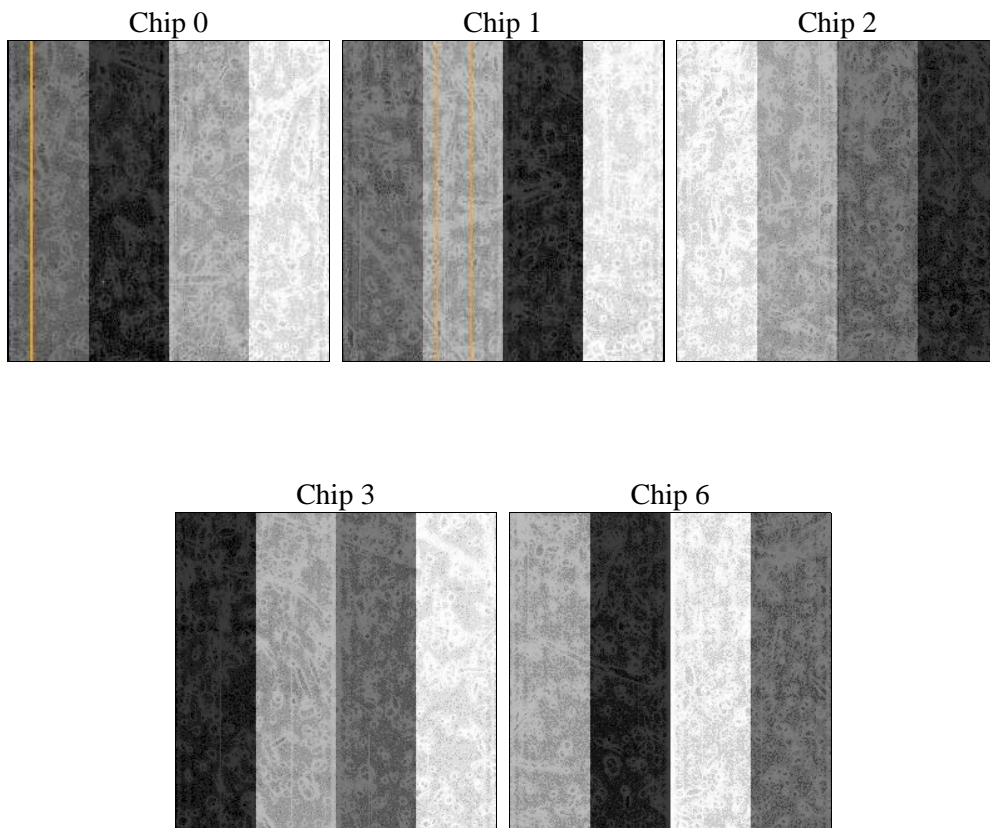
2 OBI

2.1 OBI

2.1.1 Images



2.1.2 Bias



2.1.3 Parameters

obi_num	1	Obi number	sched_exp_time	4900.000000	[s] Scheduled observation exposure time
ascdsver	8.4.5	Processing system revision	ontime	4674.2406085134	Sum of GTIs [s]
caldsver	4.5.2	 	ontime0	4674.1174885035	Sum of GTIs [s]
date	2012-10-25T15:30:49	Date and time of file creation	ontime1	4674.1585285068	Sum of GTIs [s]
revision	4	Processing version of data	ontime2	4674.1995685101	Sum of GTIs [s]
			ontime3	4674.2406085134	Sum of GTIs [s]
			ontime6	4674.0764485002	Sum of GTIs [s]
			l1events	110775	Number of level 1 events

2.1.4 Events

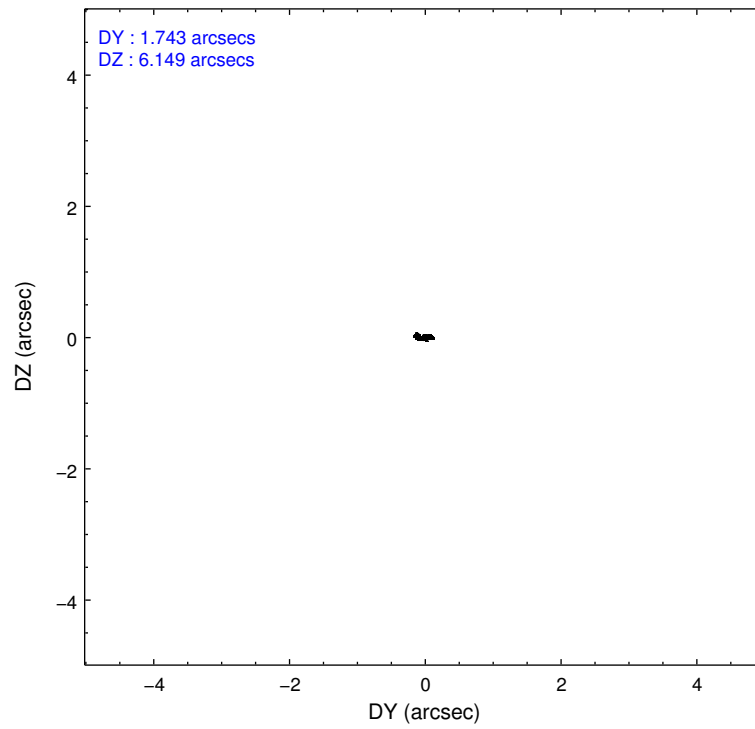
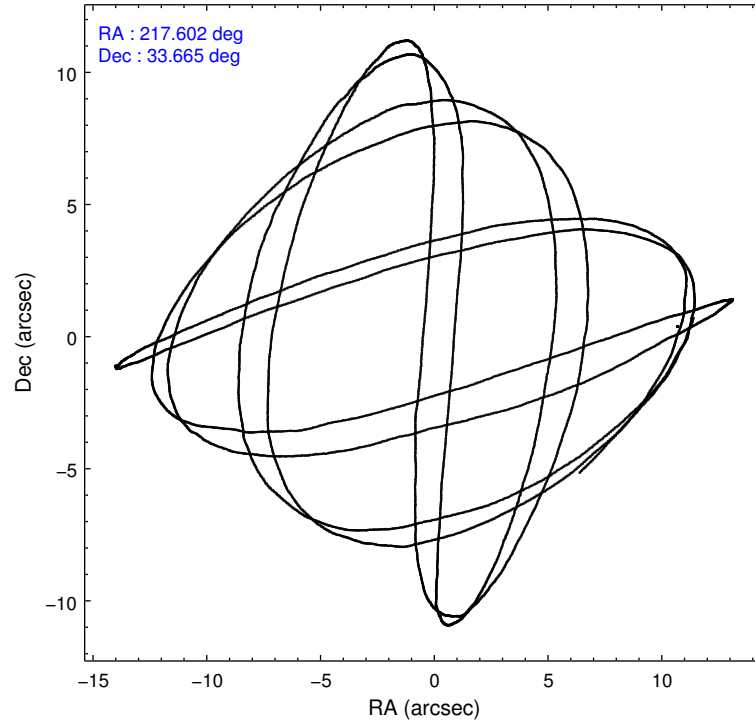
	ccd 0	ccd 1	ccd 2	ccd 3	ccd 6
level 1 events	21090	21076	23378	22717	22514
rejected events	18942	18825	21213	20563	20227
rejected %	89%	89%	90%	90%	89%

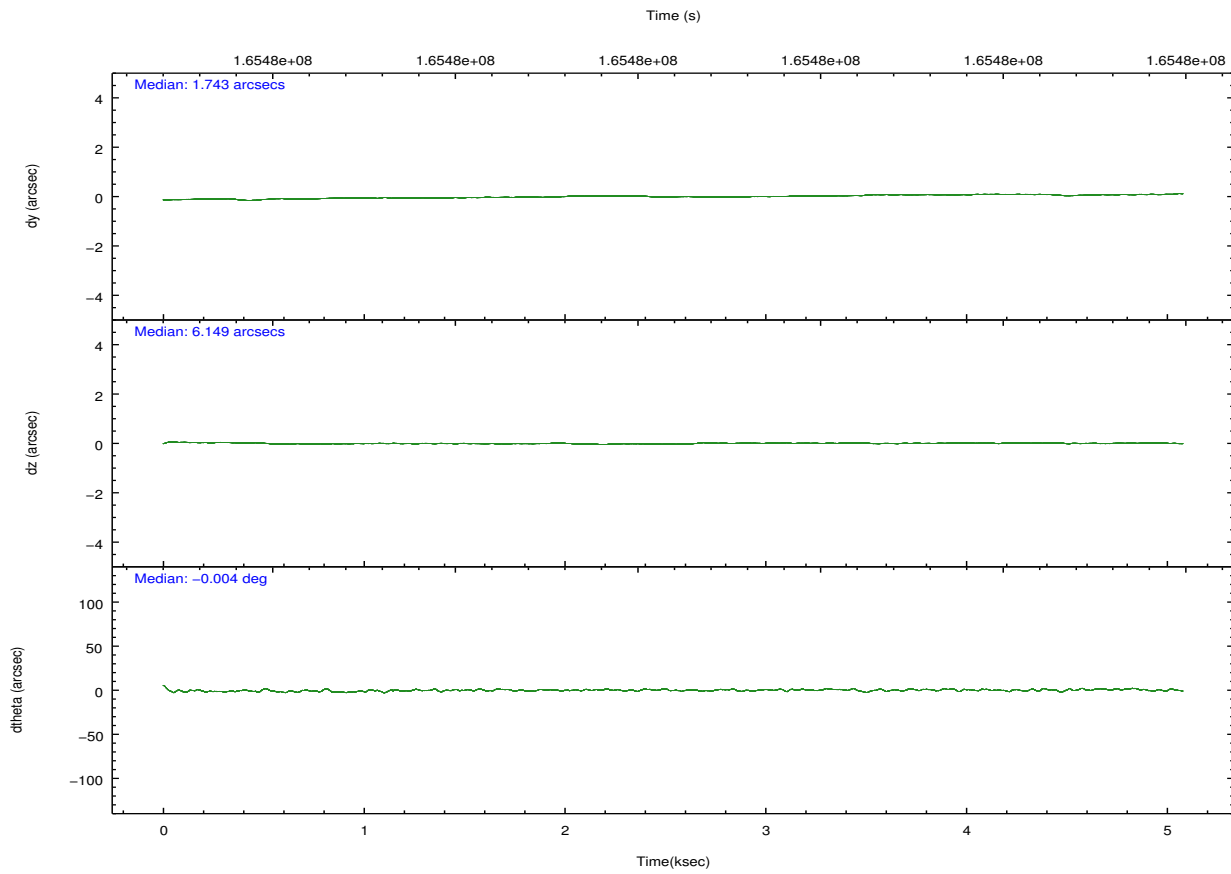
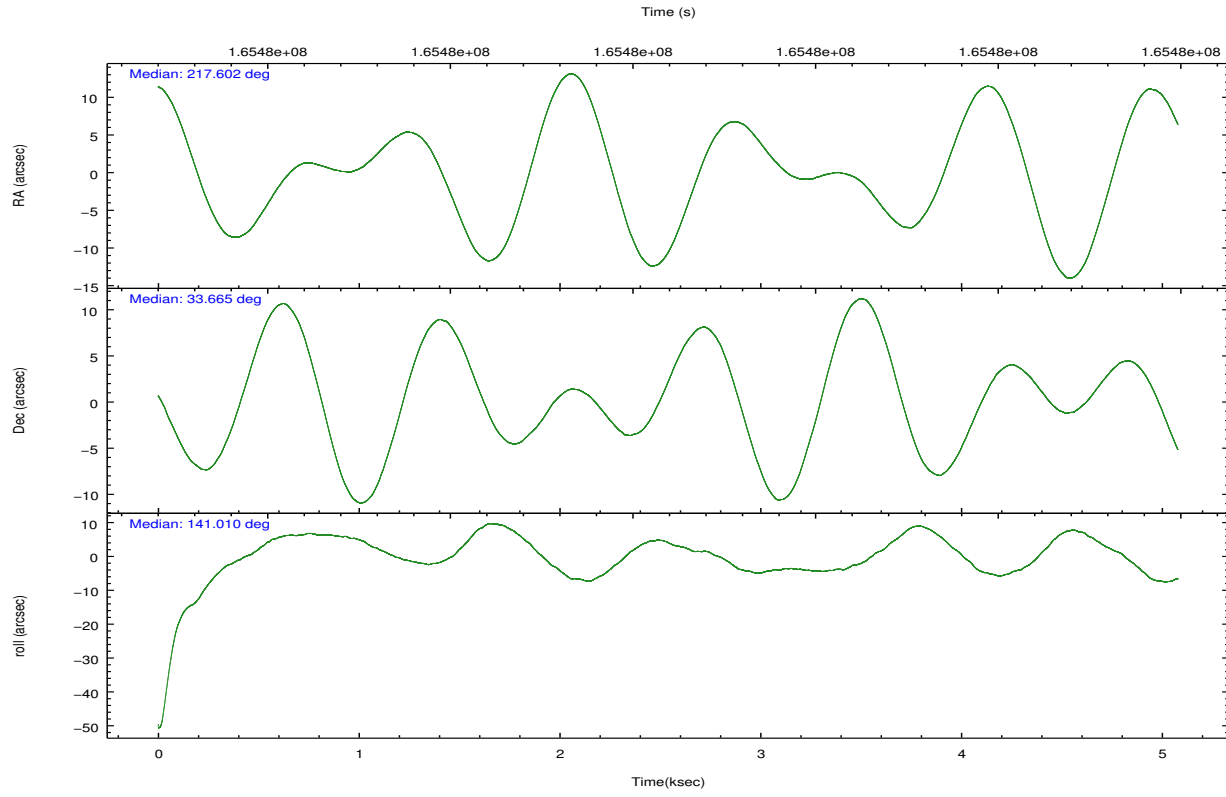
	ccd 0	ccd 1	ccd 2	ccd 3	ccd 6
grade 0 events	735	753	811	868	844
	3%	3%	3%	3%	3%
grade 1 events	10	7	13	11	9
	0%	0%	0%	0%	0%
grade 2 events	528	537	489	447	482
	2%	2%	2%	1%	2%
grade 3 events	274	249	236	220	283
	1%	1%	1%	0%	1%
grade 4 events	234	256	254	234	219
	1%	1%	1%	1%	0%
grade 5 events	693	735	643	728	740
	3%	3%	2%	3%	3%
grade 6 events	380	462	376	387	463
	1%	2%	1%	1%	2%
grade 7 events	18236	18077	20556	19822	19474
	86%	85%	87%	87%	86%

2.2 Compared Parameters

Parameter	Planned	Actual	Parameter	Planned	Actual
Instrument	ACIS	ACIS	Obspar format version number	7	7
Detector	ACIS-01236	ACIS-01236	Obspar file type	PREDICTED	ACTUAL
Grating	NONE	NONE	Obspar update status	NONE	UPDATED
Data mode	VFAINT	VFAINT	Number of optional ACIS chips dropped	0	0
Observation mode	POINTING	POINTING	On-chip summing requested	N	N
[deg] Pointing RA	217.633990	217.6015151388708	Subarray requested	NONE	NONE
[deg] Pointing Dec	33.660530	33.66466704378449	Alternating exposures requested	N	N
[deg] Pointing Roll	140.783430	141.0101356337814	[s] Primary exposure time	0.000000	3.1
[mm] SIM focus pos	-0.782348	-0.7809083437167272			
[mm] SIM defocus	0	0.001439871863259334			
[mm] SIM translation stage pos	-233.592463	-233.5874344608287			
[mm] SIM translation stage offset	0	-0.005018542100998502			
[s] Observation start time (MET)	165474834.184000	165474457.86598			
Observation start date	2003-03-31T05:12:50	2003-03-31T05:07:37			
[s] Observation end time (MET)	165479734.184000	165479868.3287			
Observation end date	2003-03-31T06:34:30	2003-03-31T06:37:48			
Read mode	TIMED	TIMED			

2.3 Aspect



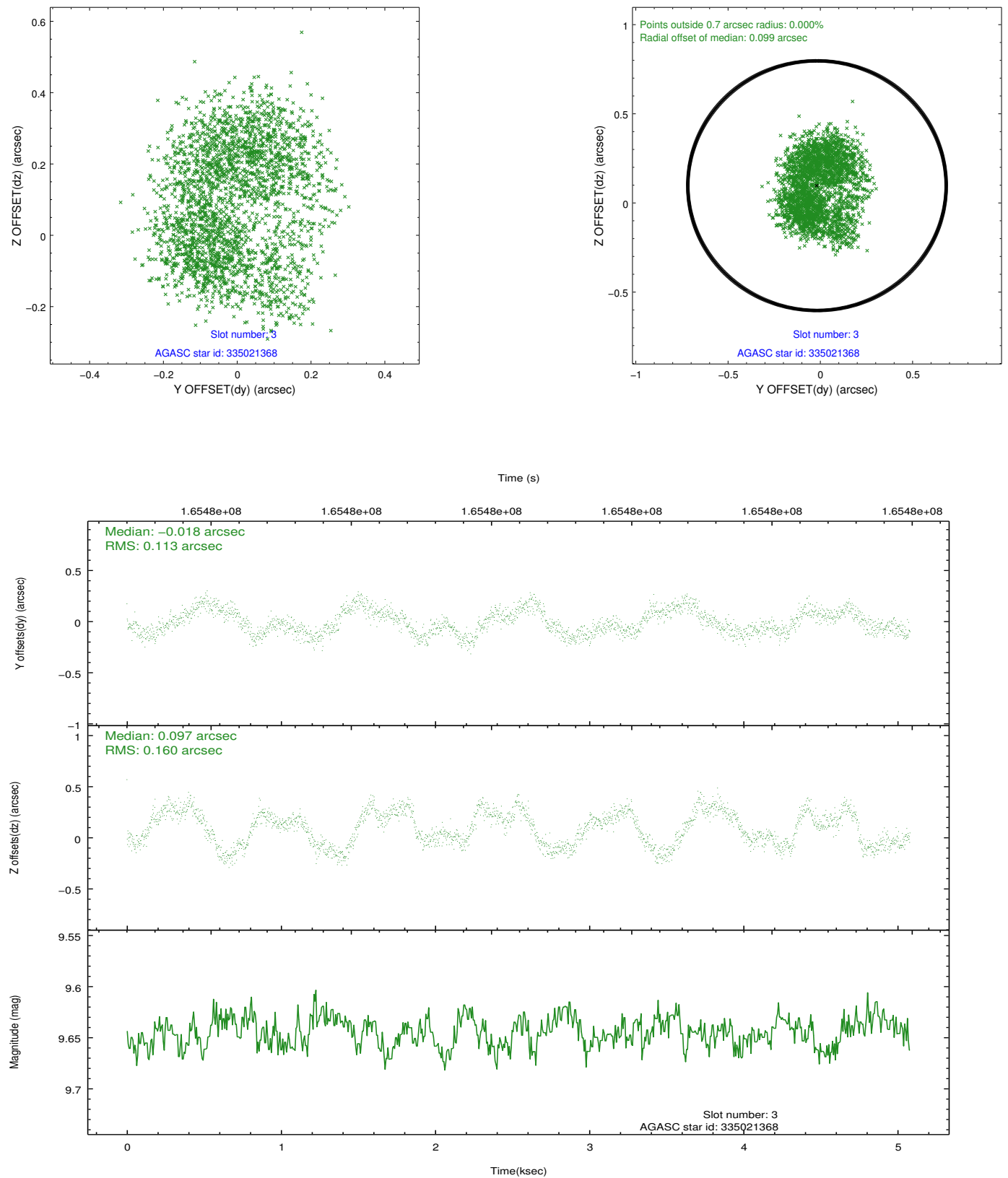


Slot Statistics

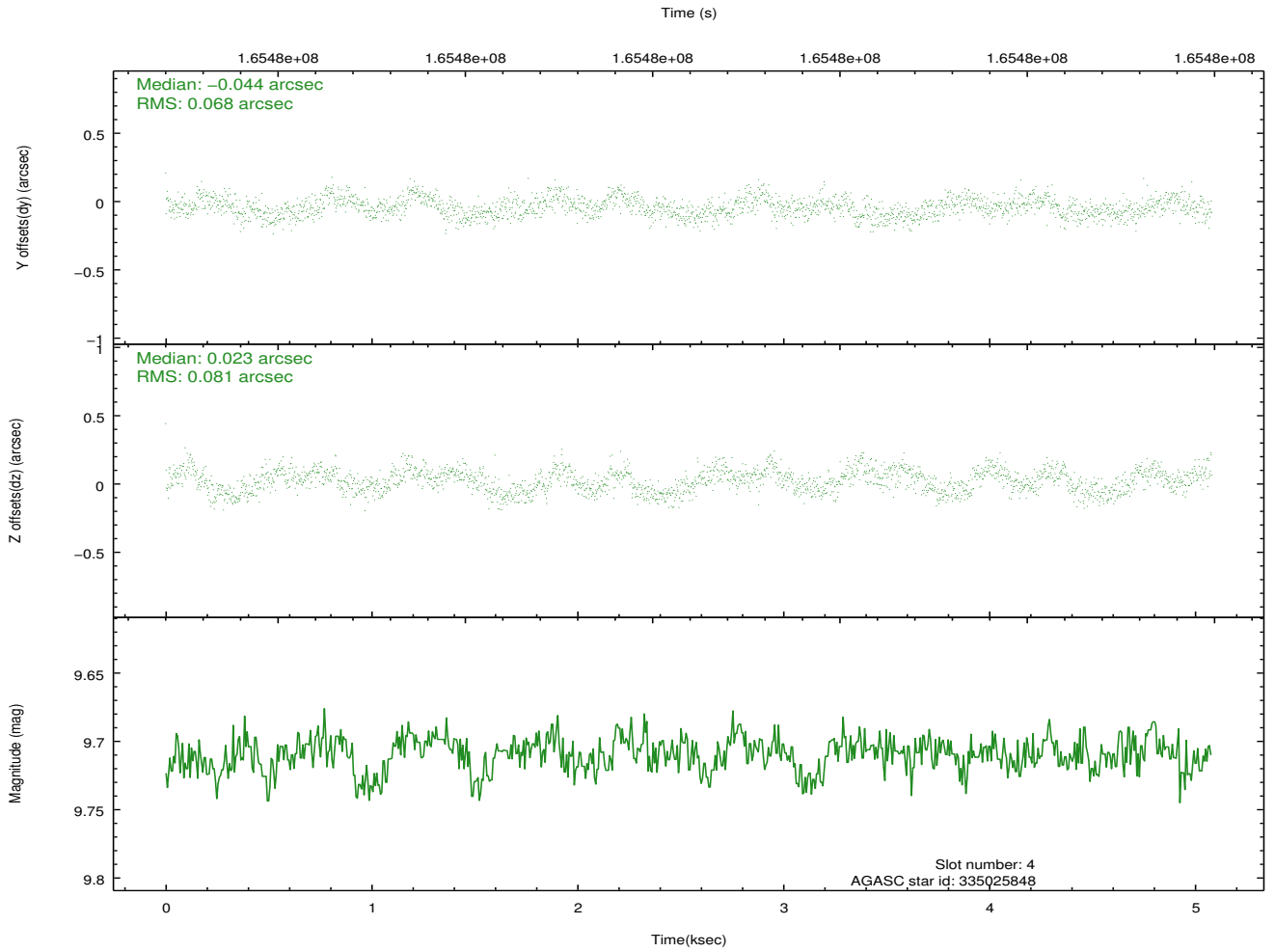
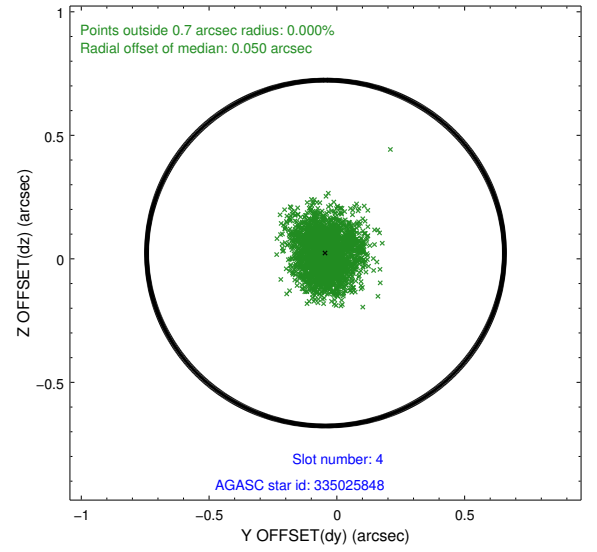
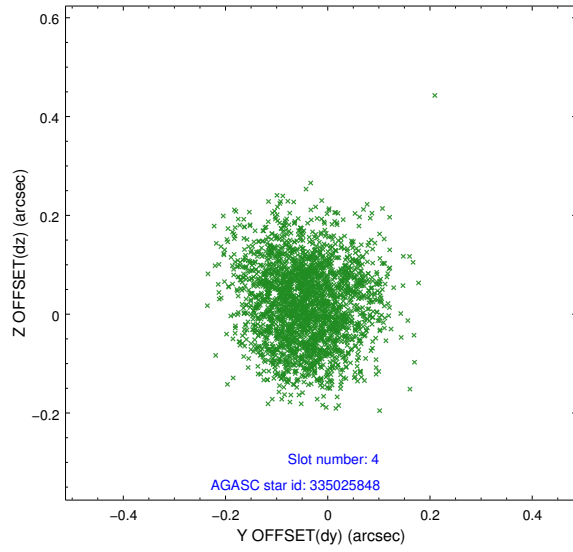
slot	status	id	mag	n_pts	med_dy	med_dz	dr1	dr2	ra	dec	mean_y	mean_z
0	FID	ACIS-I-1	7.25	1239	-0.093	0.030	0.010	0.017	0.000000	0.000000	938.02	-829.46
1	FID	ACIS-I-2	7.15	1239	-0.037	-0.027	0.012	0.024	0.000000	0.000000	-755.34	-836.60
2	FID	ACIS-I-4	7.18	1238	0.032	0.062	0.013	0.027	0.000000	0.000000	2157.44	1069.82
3	GUIDE	335021368	9.64	2479	-0.018	0.097	0.216	0.306	217.529643	33.934817	866.45	-567.83
4	GUIDE	335025848	9.71	2476	-0.044	0.023	0.114	0.176	217.530531	33.778292	508.86	-132.86
5	GUIDE	335027640	9.11	2479	-0.007	-0.011	0.105	0.161	218.092211	33.193770	-2129.22	426.83
6	GUIDE	335028696	9.20	2470	0.072	-0.094	0.074	0.123	217.260519	33.844112	1284.05	192.71
7	GUIDE	335029384	8.49	2478	-0.014	-0.018	0.085	0.131	217.848061	33.088477	-1800.98	1187.07

2.4 Star Slots

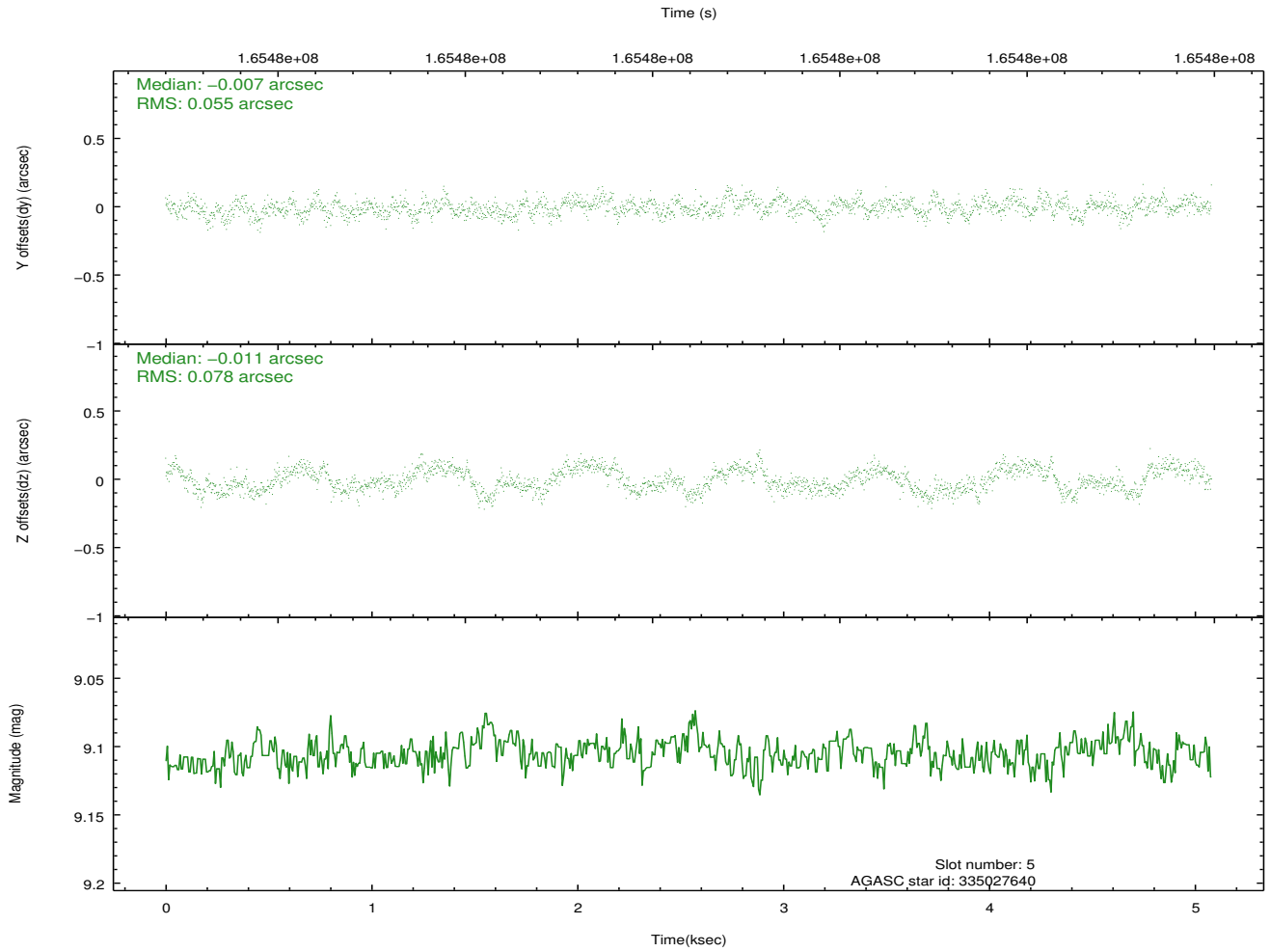
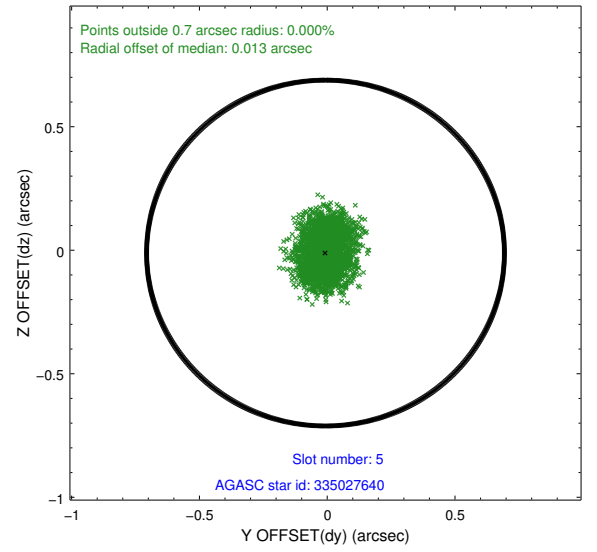
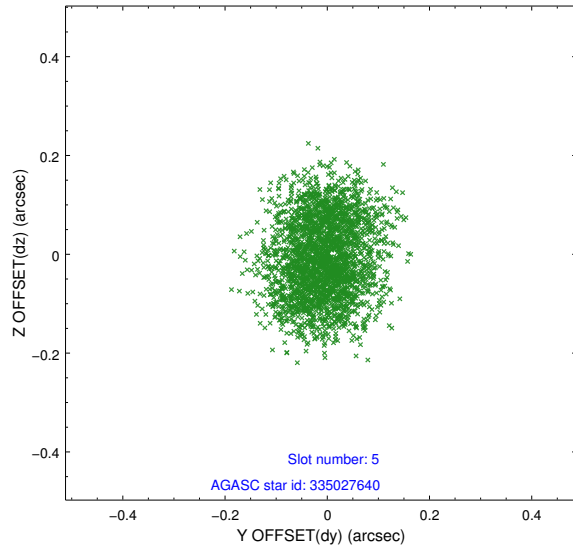
2.4.1 Slot 3



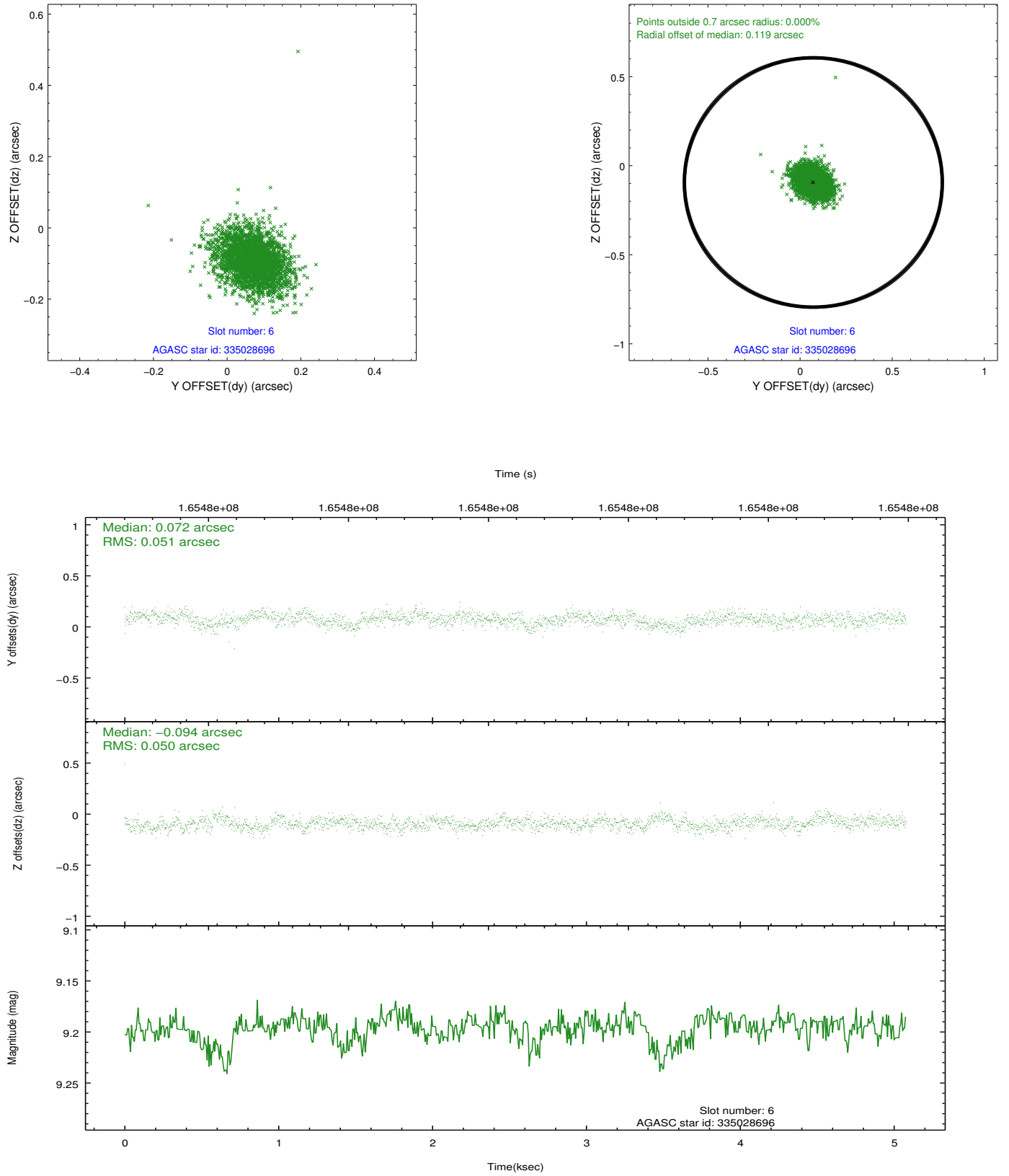
2.4.2 Slot 4



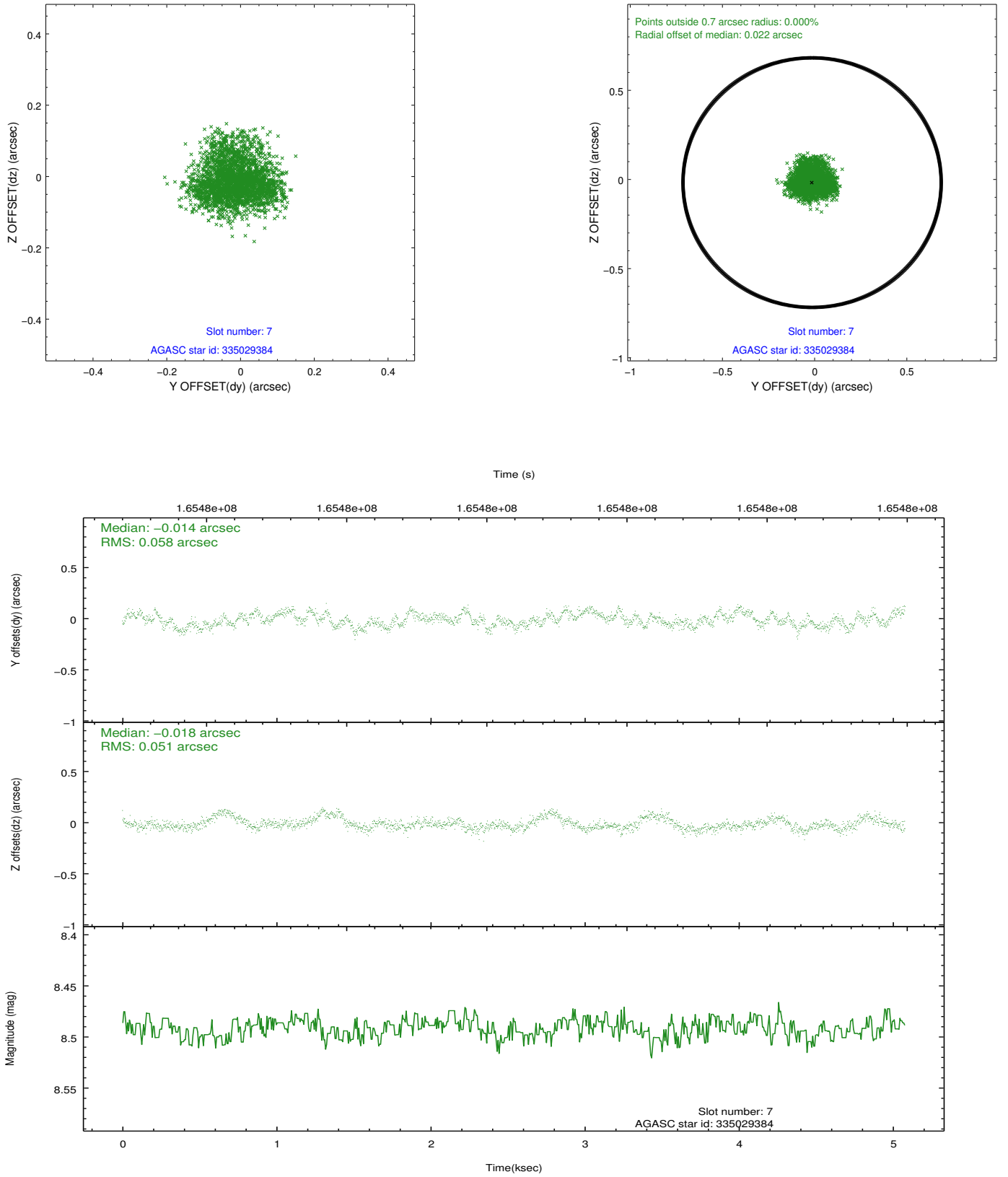
2.4.3 Slot 5



2.4.4 Slot 6

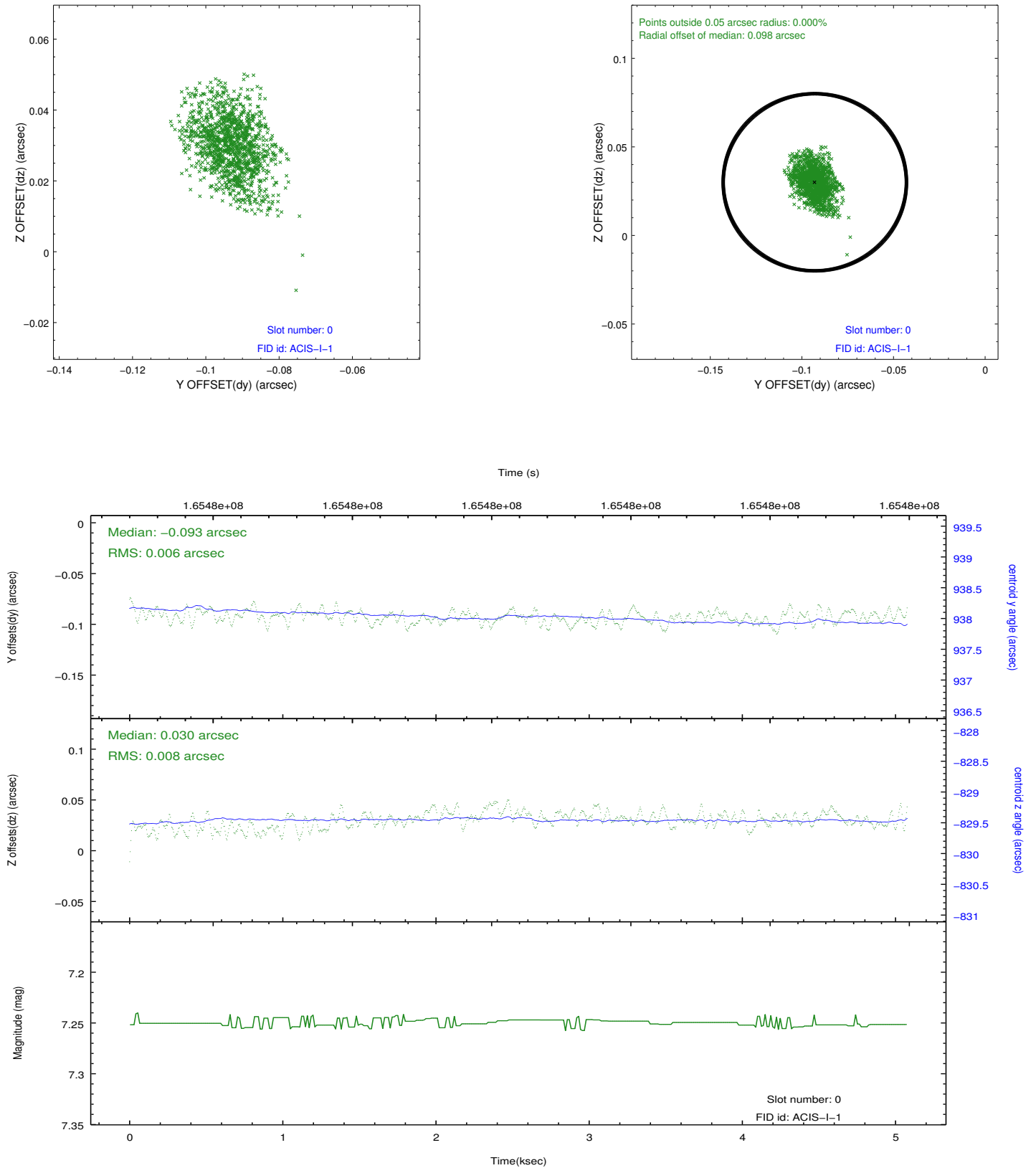


2.4.5 Slot 7

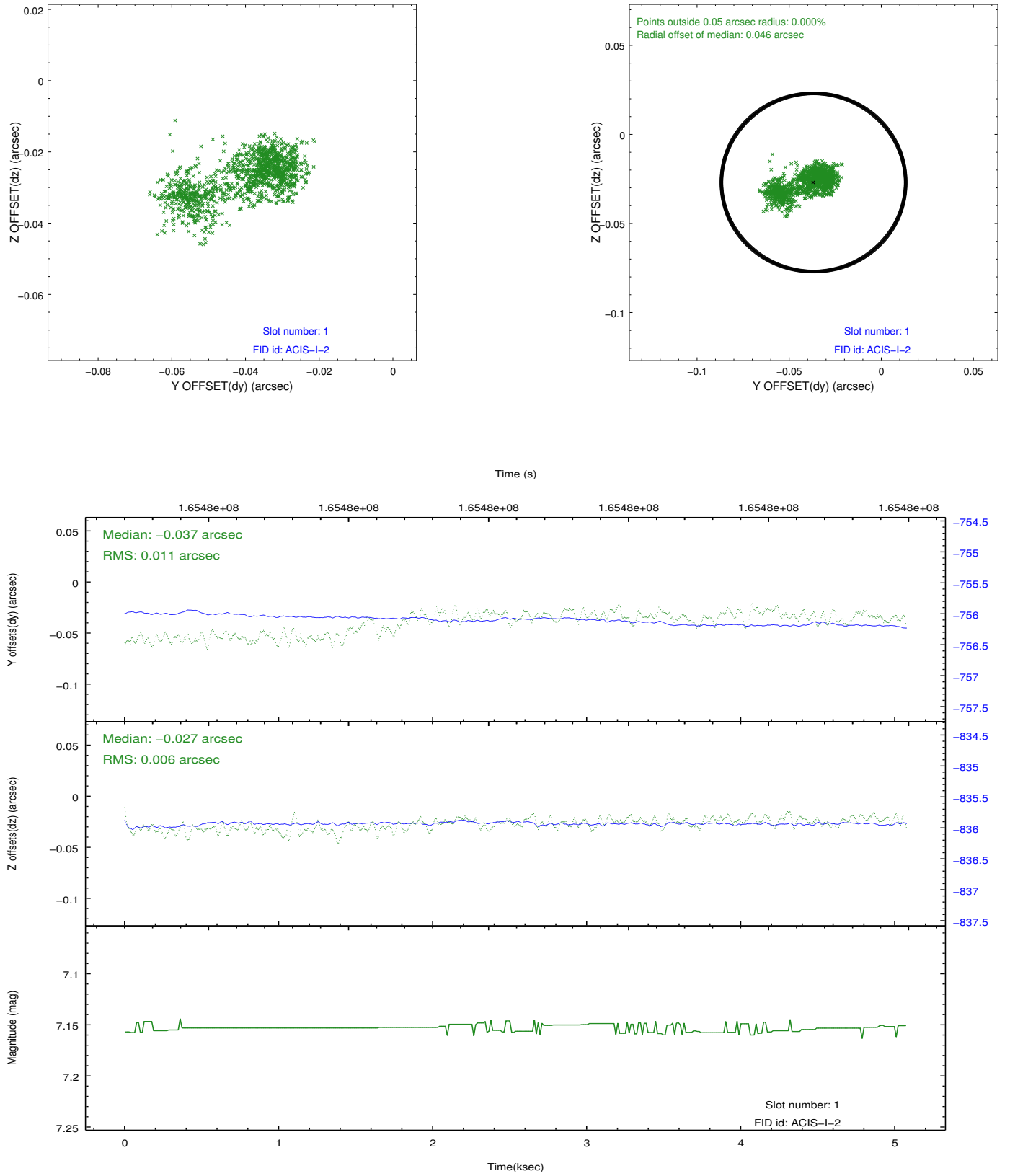


2.5 FID Slots

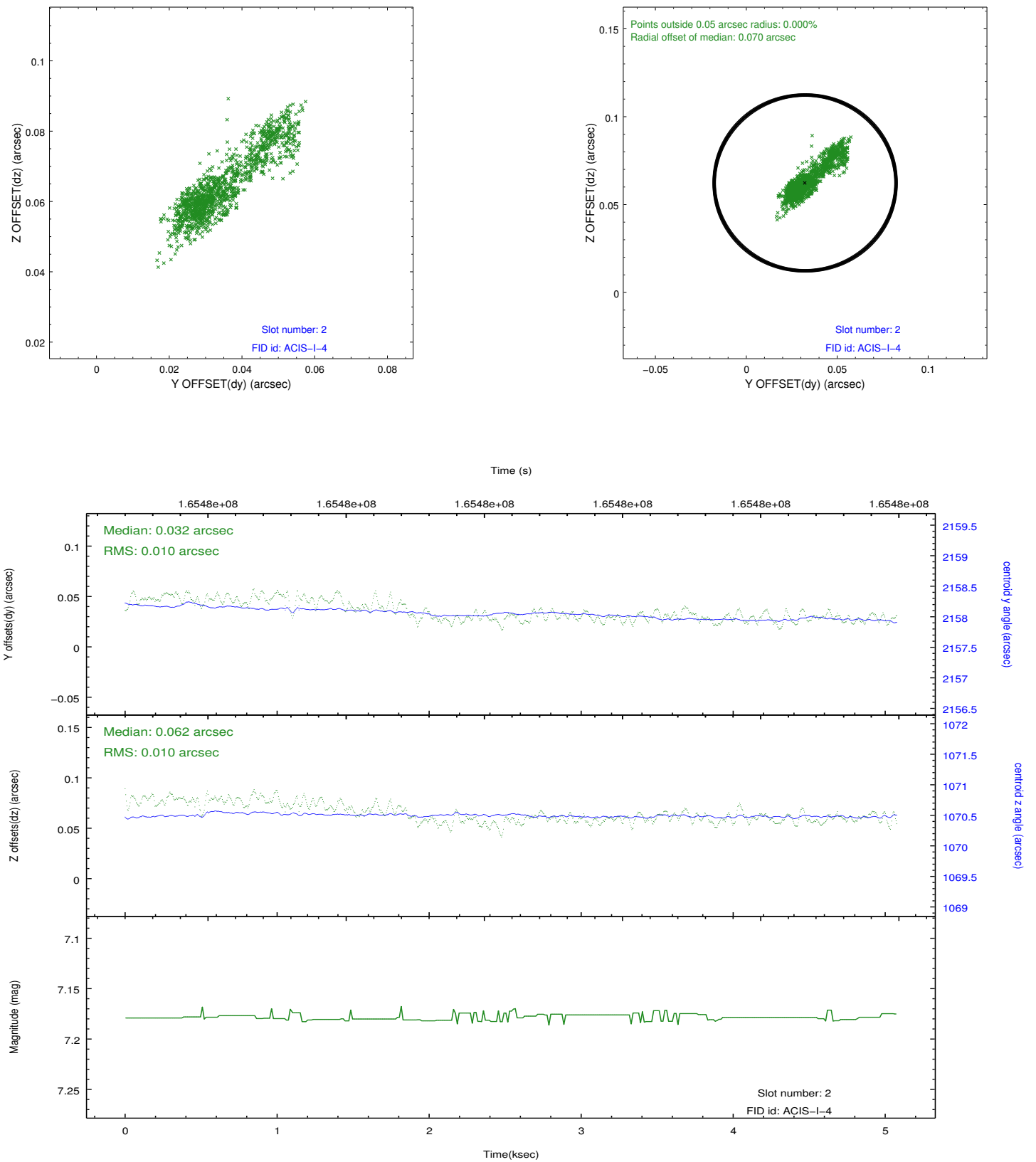
2.5.1 Slot 0



2.5.2 Slot 1



2.5.3 Slot 2



A Summary

A.1 Status

V&V Scientist	Jen Lauer
V&V Date (YYYY-MM-DD)	2012.11.09
V&V Edition	1
V&V Disposition and Status	OK
V&V Charge Time	4.675

A.2 Comments