

V&V Reference Report

L2 ASCDS Version : 8.4.5

Observation 4218 - L2 Version 3
Chandra X-Ray Center

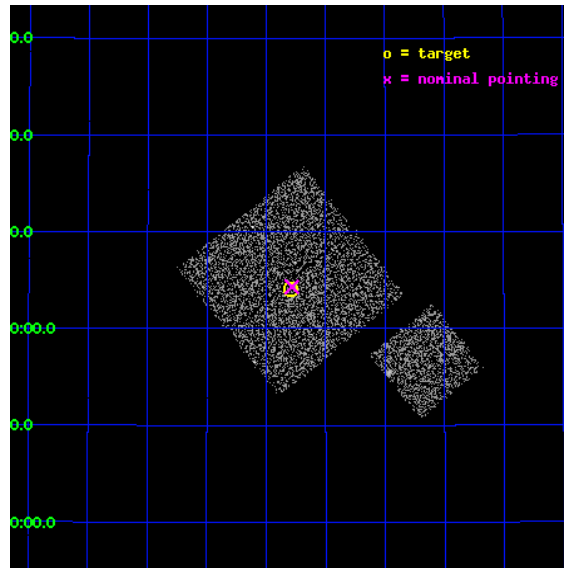
L2 Processing Date : Oct 25 2012

Contents

1	Front	2
2	OBI	3
2.1	OBI	3
2.1.1	Images	3
2.1.2	Bias	3
2.1.3	Parameters	4
2.1.4	Events	4
2.2	Compared Parameters	5
2.3	Aspect	6
2.4	Star Slots	9
2.4.1	Slot 3	9
2.4.2	Slot 4	10
2.4.3	Slot 5	11
2.4.4	Slot 6	12
2.4.5	Slot 7	13
2.5	FID Slots	14
2.5.1	Slot 0	14
2.5.2	Slot 1	15
2.5.3	Slot 2	16
A	Summary	17
A.1	Status	17
A.2	Comments	17

1 Front

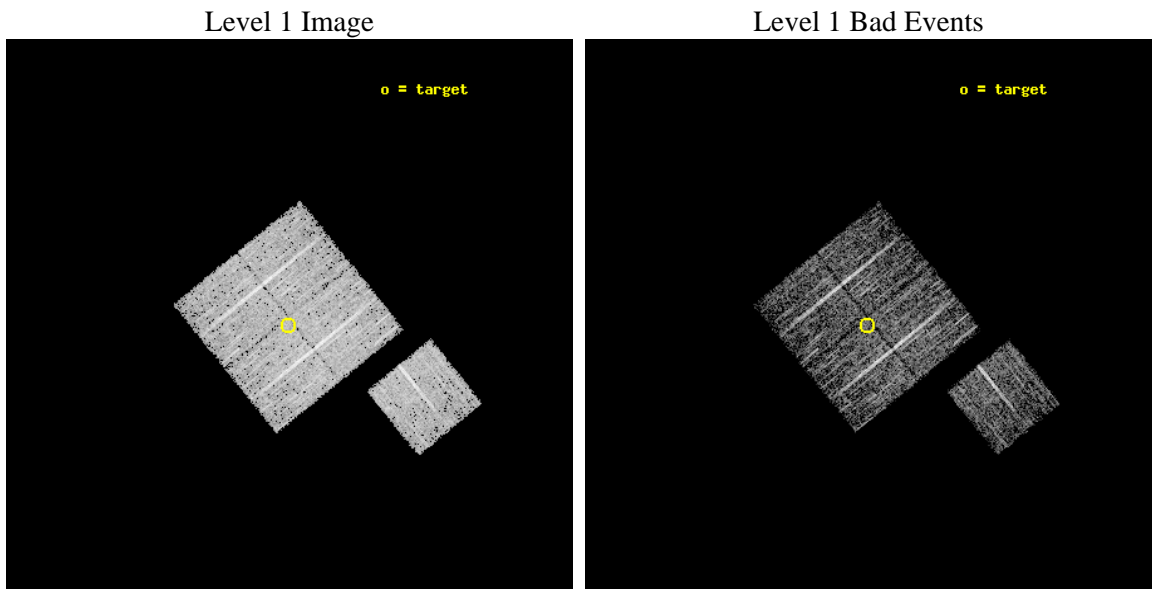
seq_num	900261	Sequence number
obs_id	4218	Observation id
title	A CHANDRA WIDE-FIELD SURVEY TO MAP THE COSMIC WEB AND INVESTIGATE THE EVOLUTION OF NUCLEAR ACCRETION	Proposal title
observer	Dr. Christine Jones	Principal investigator
object	SS45	Source name
dtcycle	0	
cycle	P	events from which exps? Prim/Second/Both
ra_targ	219.323765	Observer's specified target RA [deg]
dec_targ	34.068	Observer's specified target Dec [deg]
ra_nom	219.32119210662	Nominal RA [deg]
dec_nom	34.072012556681	Nominal Dec [deg]
roll_nom	141.01015762382	Nominal Roll [deg]
revision	3	Processing version of data
ontime	5015.7999903262	Sum of GTIs [s]
livetime	4950.2648708743	Livetime [s]
ontime0	5015.7999903262	Sum of GTIs [s]
ontime1	5015.7999903262	Sum of GTIs [s]
ontime2	5015.7999903262	Sum of GTIs [s]
ontime3	5015.7999903262	Sum of GTIs [s]
ontime6	5015.7999903262	Sum of GTIs [s]
l2events	10123	Number of level 2 events



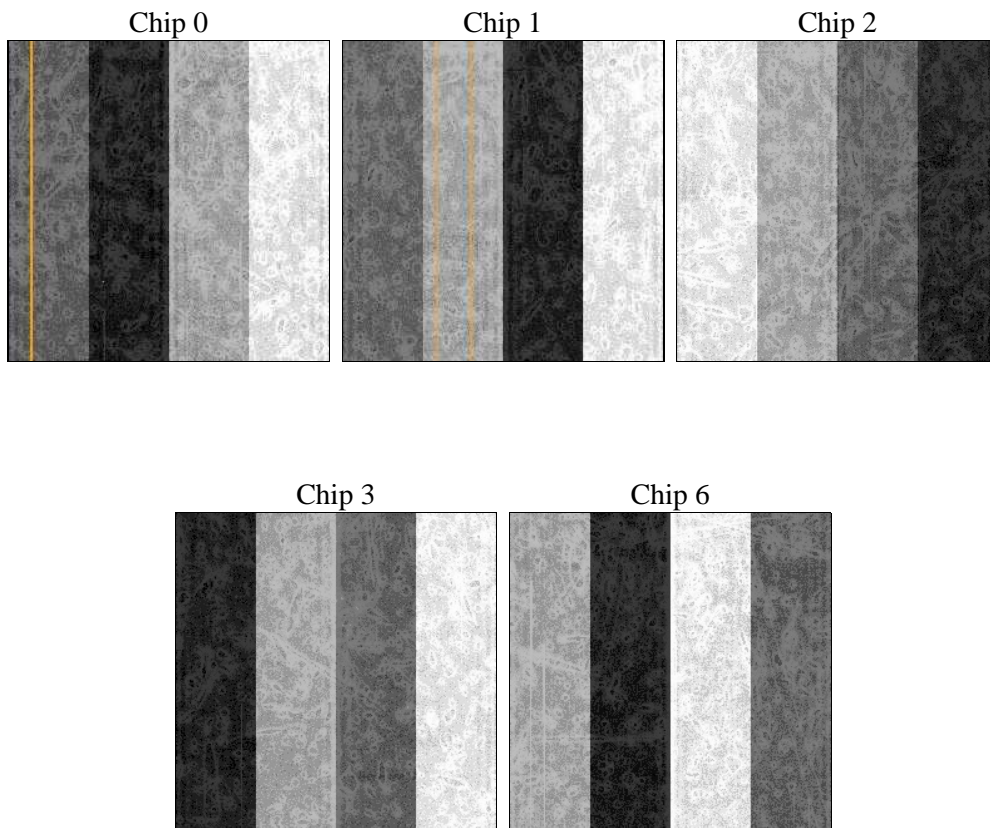
2 OBI

2.1 OBI

2.1.1 Images



2.1.2 Bias



2.1.3 Parameters

obi_num	1	Obi number	sched_exp_time	4900.000000	[s] Scheduled observation exposure time
ascdsver	8.4.5	Processing system revision	ontime	5015.7999903262	Sum of GTIs [s]
caldsver	4.5.2	 	ontime0	5015.7999903262	Sum of GTIs [s]
date	2012-10-26T00:14:59	Date and time of file creation	ontime1	5015.7999903262	Sum of GTIs [s]
revision	3	Processing version of data	ontime2	5015.7999903262	Sum of GTIs [s]
			ontime3	5015.7999903262	Sum of GTIs [s]
			ontime6	5015.7999903262	Sum of GTIs [s]
			l1events	123807	Number of level 1 events

2.1.4 Events

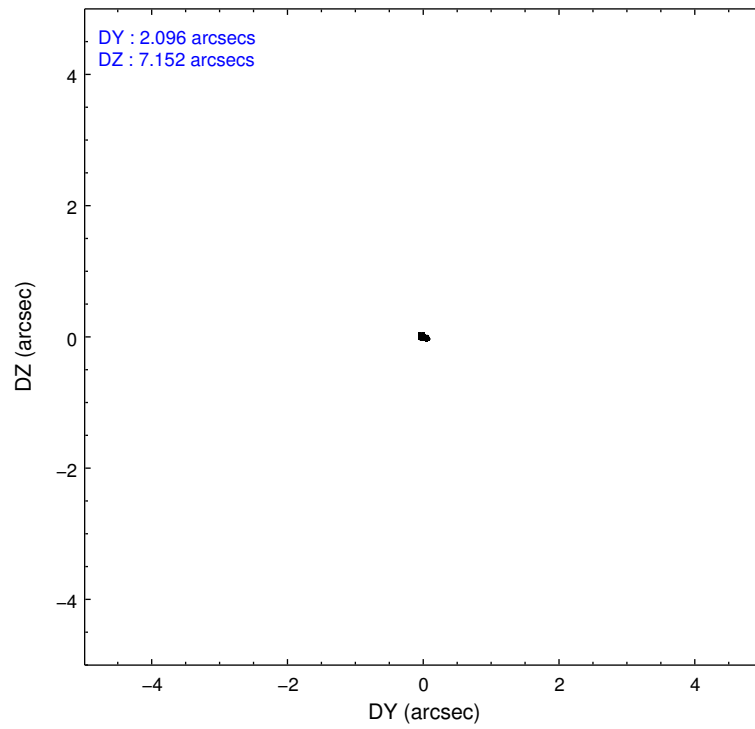
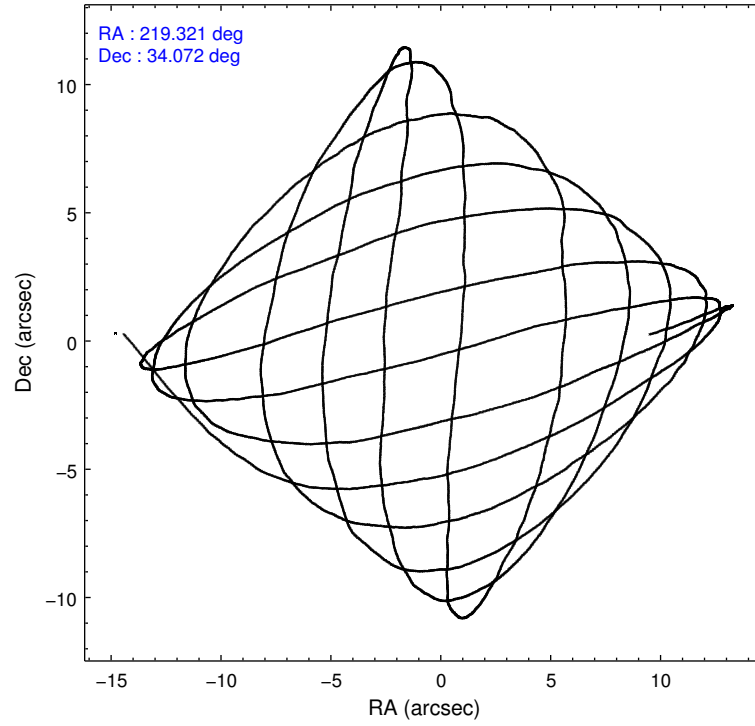
	ccd 0	ccd 1	ccd 2	ccd 3	ccd 6
level 1 events	23312	23202	27494	25888	23911
rejected events	20751	20630	25104	23561	21427
rejected %	89%	88%	91%	91%	89%

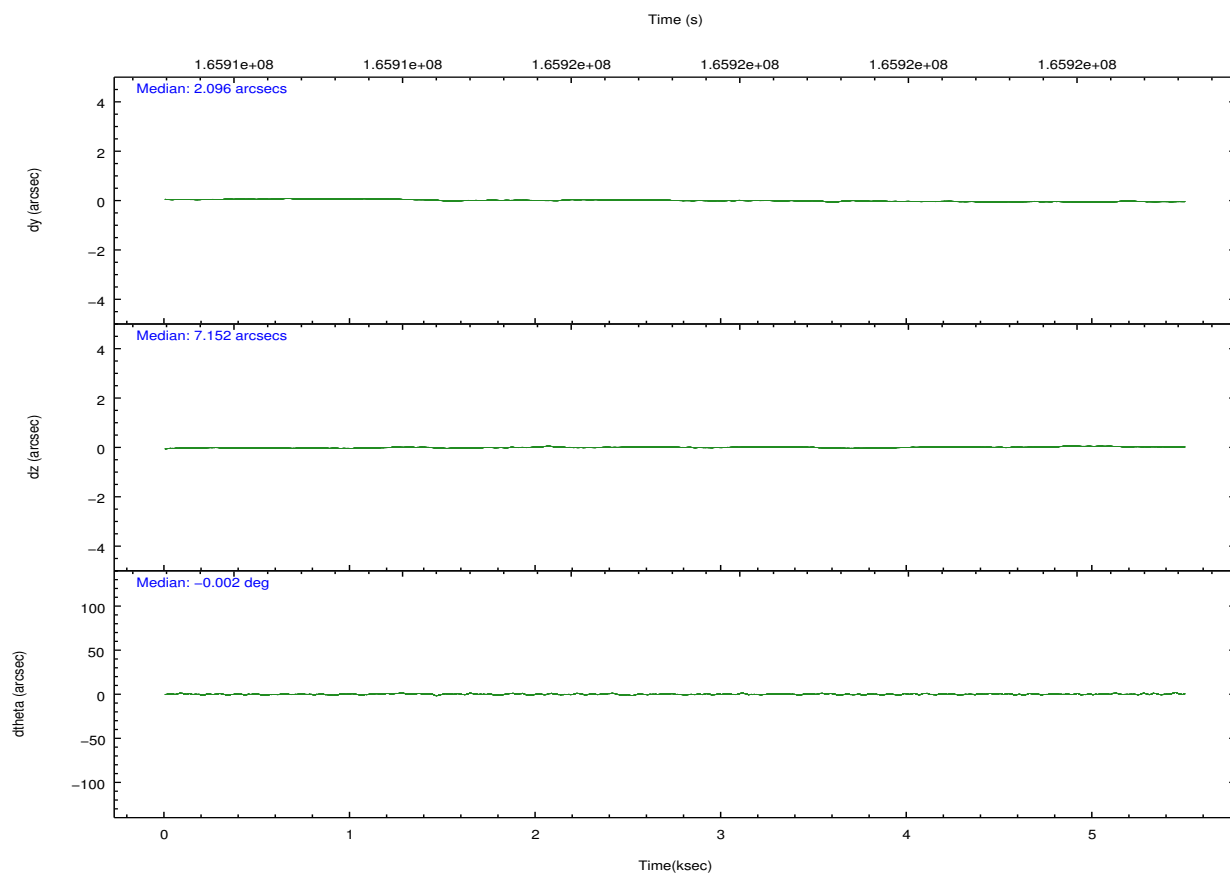
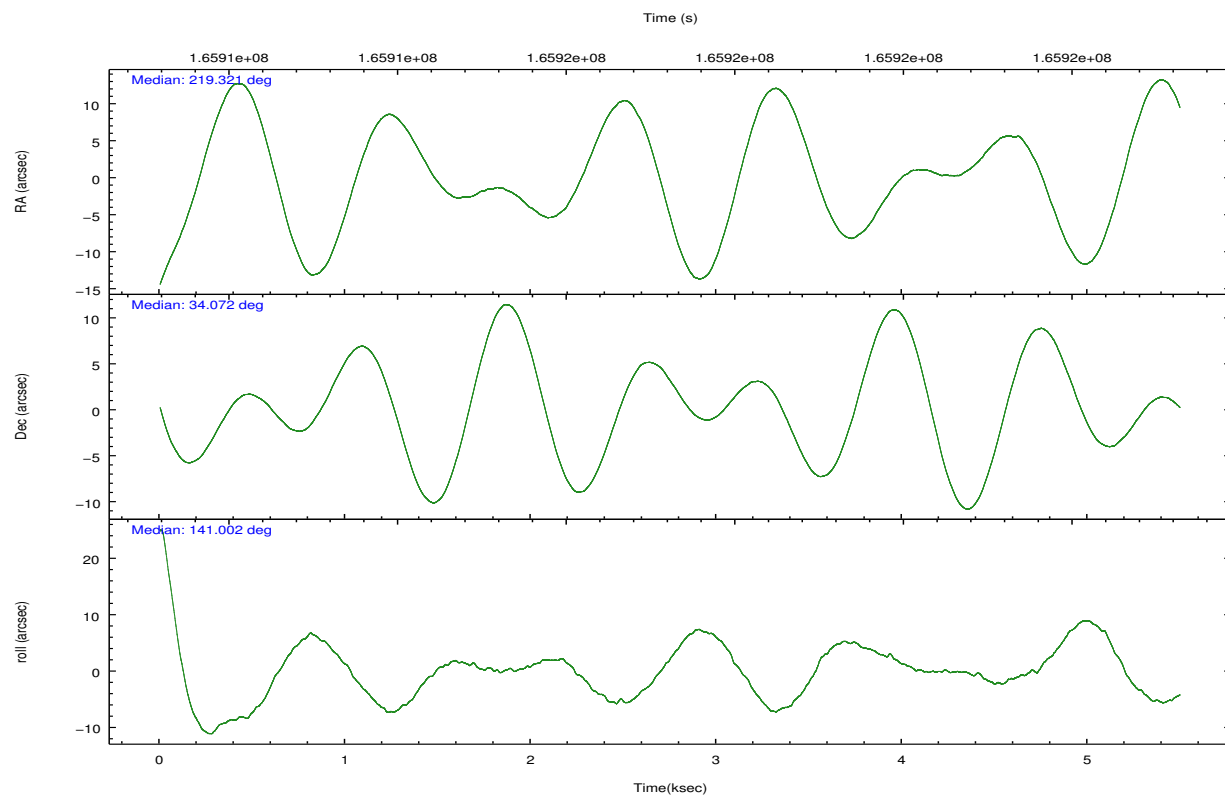
	ccd 0	ccd 1	ccd 2	ccd 3	ccd 6
grade 0 events	934	918	873	855	891
	4%	3%	3%	3%	3%
grade 1 events	14	11	7	13	13
	0%	0%	0%	0%	0%
grade 2 events	604	527	515	493	535
	2%	2%	1%	1%	2%
grade 3 events	318	323	277	275	270
	1%	1%	1%	1%	1%
grade 4 events	284	301	287	265	277
	1%	1%	1%	1%	1%
grade 5 events	709	767	686	854	781
	3%	3%	2%	3%	3%
grade 6 events	424	506	443	442	514
	1%	2%	1%	1%	2%
grade 7 events	20025	19849	24406	22691	20630
	85%	85%	88%	87%	86%

2.2 Compared Parameters

Parameter	Planned	Actual	Parameter	Planned	Actual
Instrument	ACIS	ACIS	Obspar format version number	7	7
Detector	ACIS-01236	ACIS-01236	Obspar file type	PREDICTED	ACTUAL
Grating	NONE	NONE	Obspar update status	NONE	UPDATED
Data mode	VFAINT	VFAINT	Number of optional ACIS chips dropped	0	0
Observation mode	POINTING	POINTING	On-chip summing requested	N	N
[deg] Pointing RA	219.353806	219.3211921066194	Subarray requested	NONE	NONE
[deg] Pointing Dec	34.067923	34.0720125566807	Alternating exposures requested	N	N
[deg] Pointing Roll	140.783174	141.0101576238186	[s] Primary exposure time	0.000000	3.1
[mm] SIM focus pos	-0.782348	-0.7809083437167272			
[mm] SIM defocus	0	0.001439871863259334			
[mm] SIM translation stage pos	-233.592463	-233.5874344608287			
[mm] SIM translation stage offset	0	-0.005018542100998502			
[s] Observation start time (MET)	165913467.184000	165912300.47195			
Observation start date	2003-04-05T07:03:23	2003-04-05T06:45:00			
[s] Observation end time (MET)	165918367.184000	165918500.69721			
Observation end date	2003-04-05T08:25:03	2003-04-05T08:28:20			
Read mode	TIMED	TIMED			

2.3 Aspect



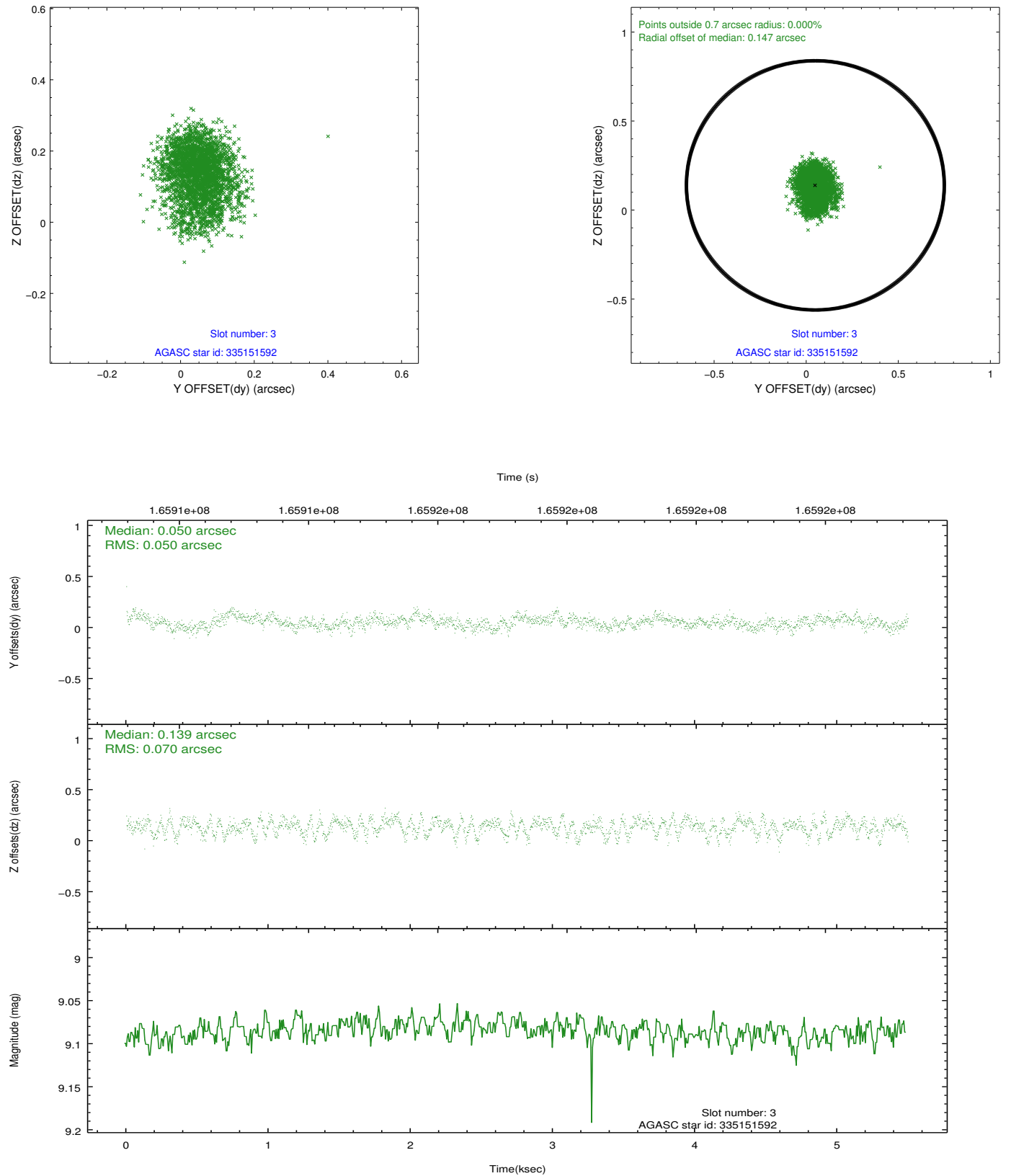


Slot Statistics

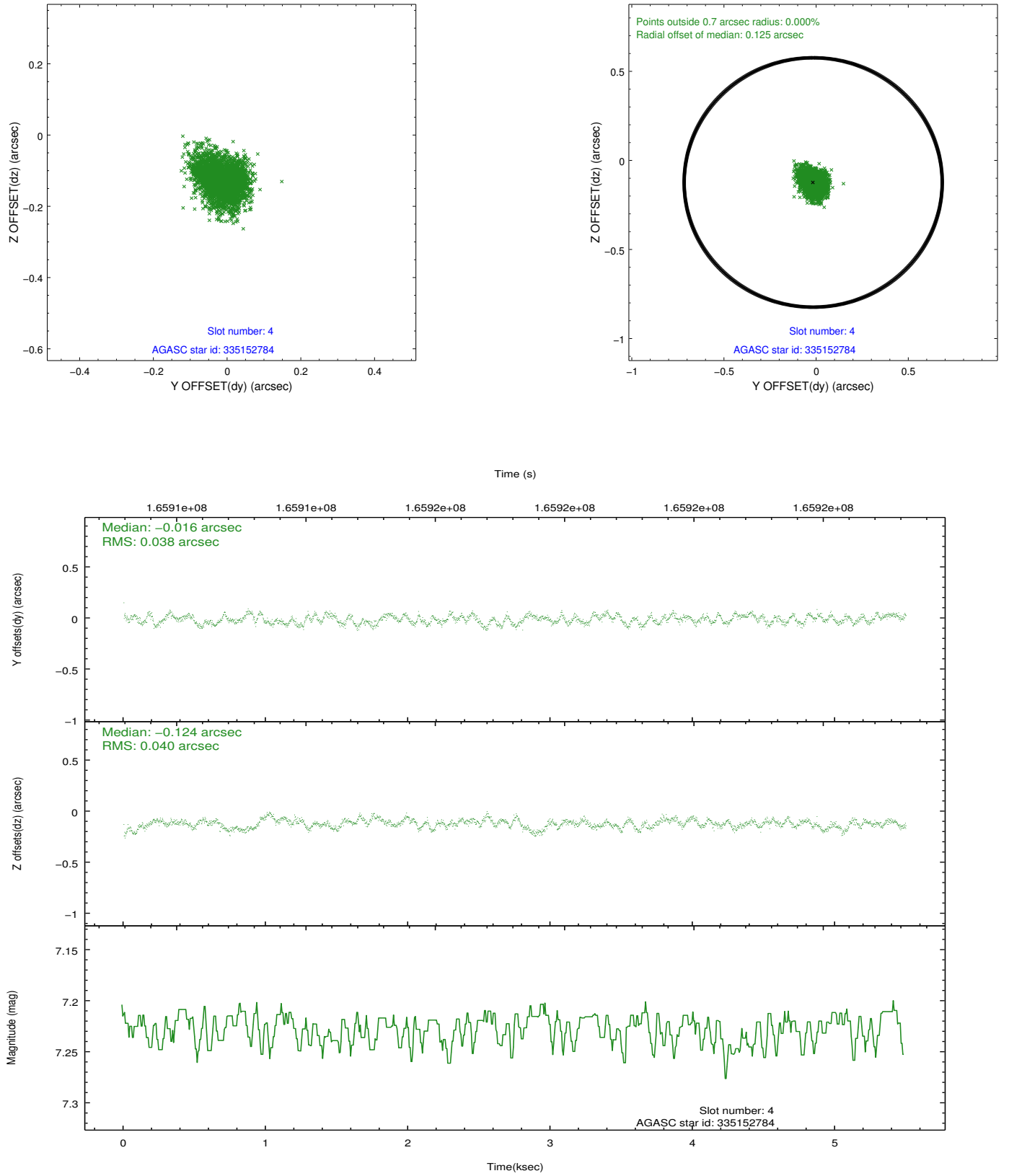
slot	status	id	mag	n_pts	med_dy	med_dz	dr1	dr2	ra	dec	mean_y	mean_z
0	FID	ACIS-I-1	7.25	1341	-0.049	-0.048	0.008	0.013	0.000000	0.000000	937.67	-830.60
1	FID	ACIS-I-4	7.18	1341	0.041	0.080	0.007	0.012	0.000000	0.000000	2158.42	1068.79
2	FID	ACIS-I-5	7.23	1340	-0.090	0.038	0.006	0.011	0.000000	0.000000	-1808.95	1067.86
3	GUIDE	335151592	9.08	2679	0.050	0.139	0.093	0.148	220.179561	34.279746	-1413.82	-2151.49
4	GUIDE	335152784	7.23	2681	-0.016	-0.124	0.060	0.093	219.280617	33.678221	-717.37	1224.64
5	GUIDE	335152968	9.76	2681	-0.071	0.037	0.123	0.197	219.446087	34.867883	1610.17	-2402.76
6	GUIDE	335155824	8.93	2682	0.055	0.023	0.069	0.111	219.689900	34.035435	-848.46	-545.46
7	GUIDE	335157088	9.09	2680	-0.019	-0.065	0.069	0.114	219.274029	33.726909	-591.09	1101.88

2.4 Star Slots

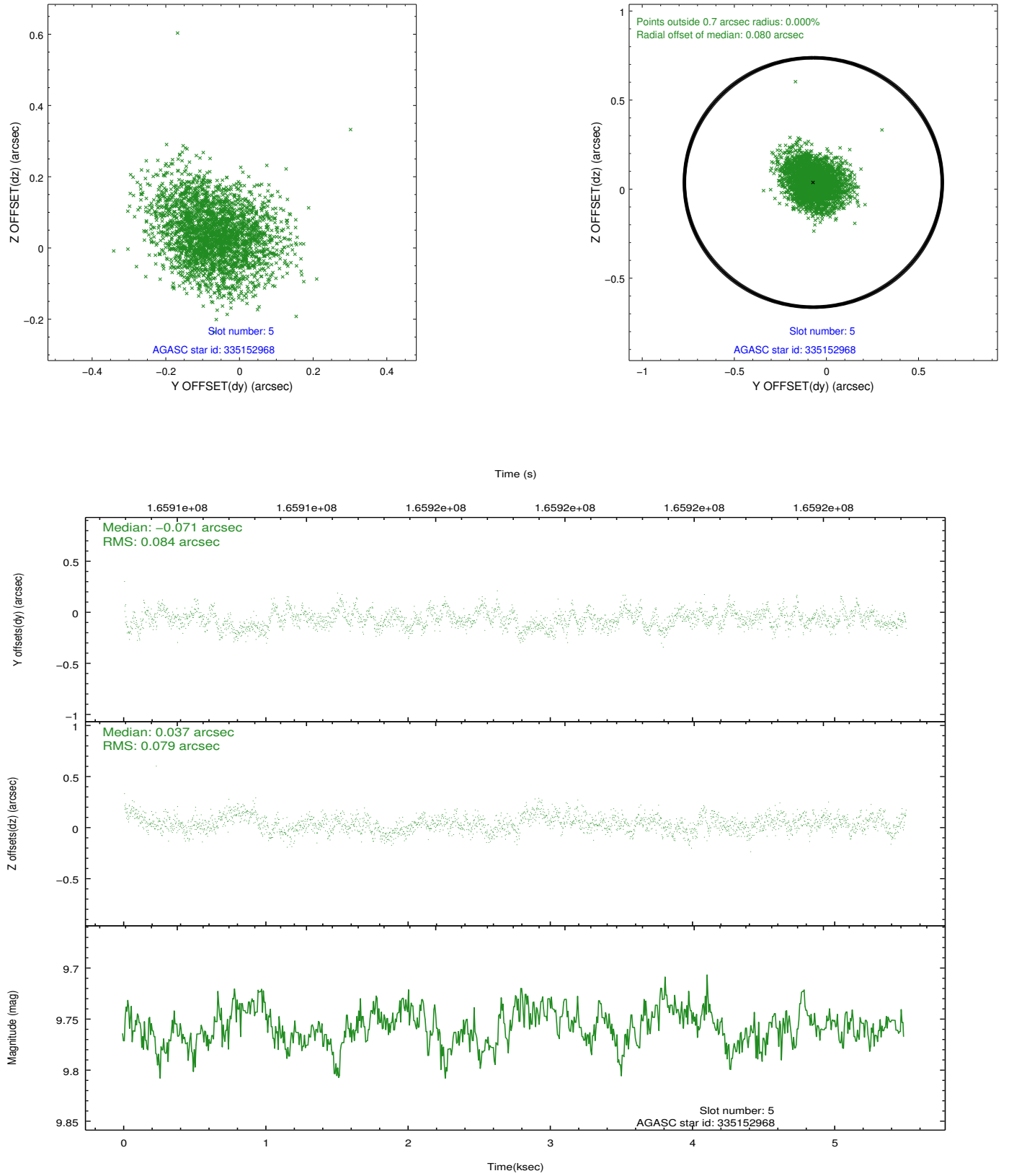
2.4.1 Slot 3



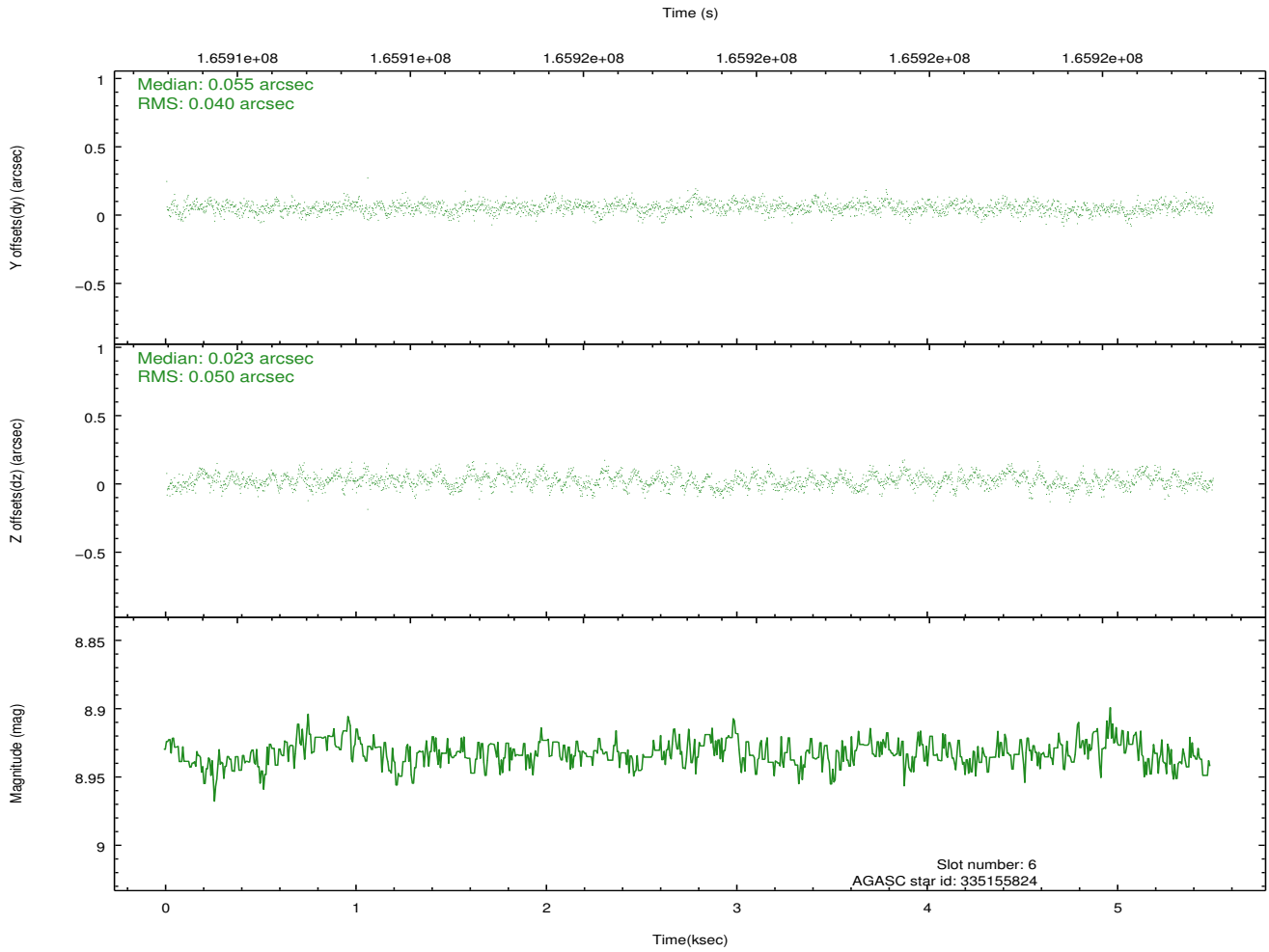
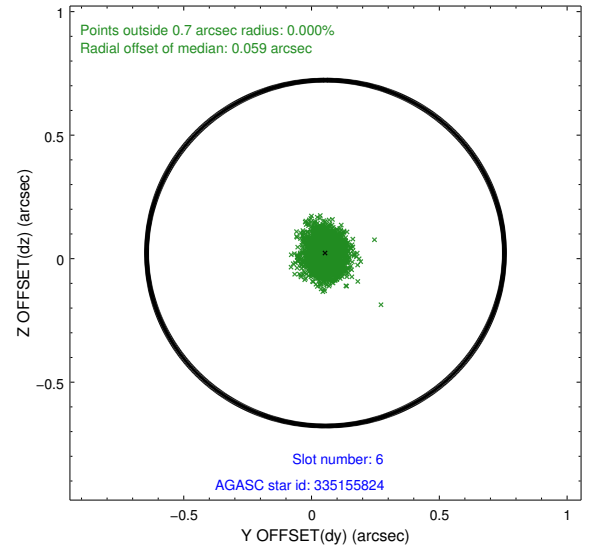
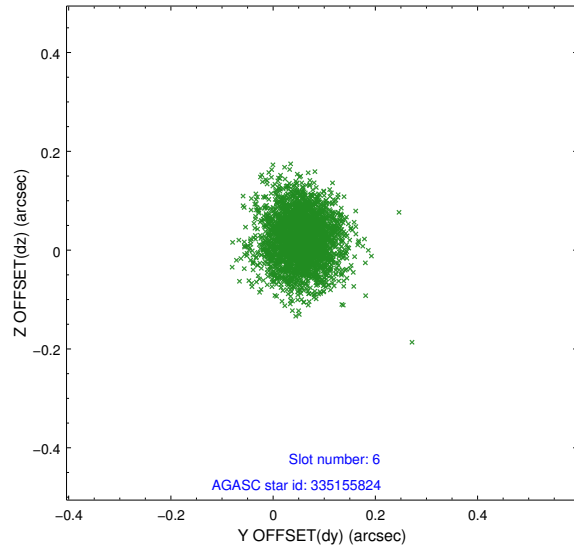
2.4.2 Slot 4



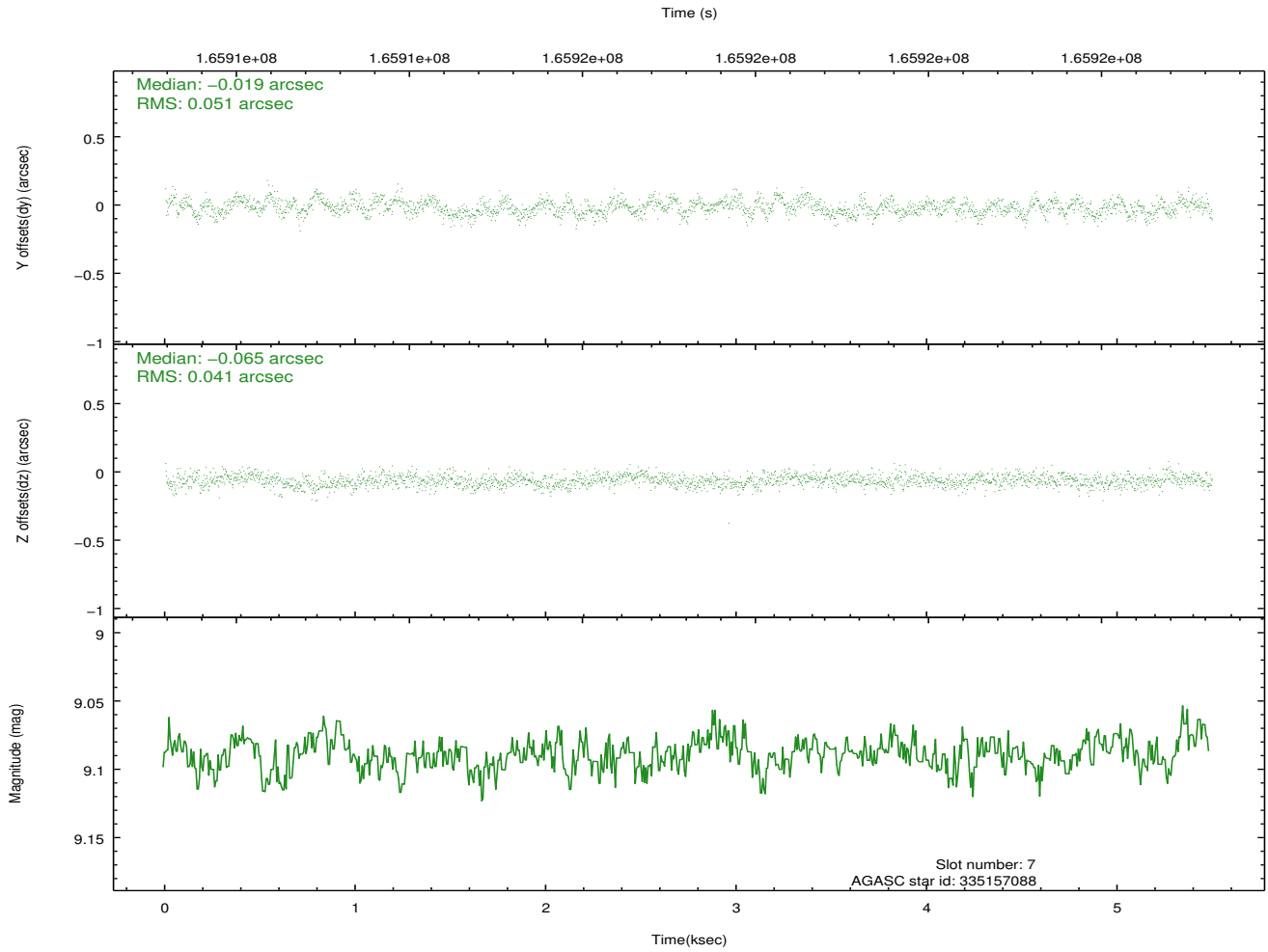
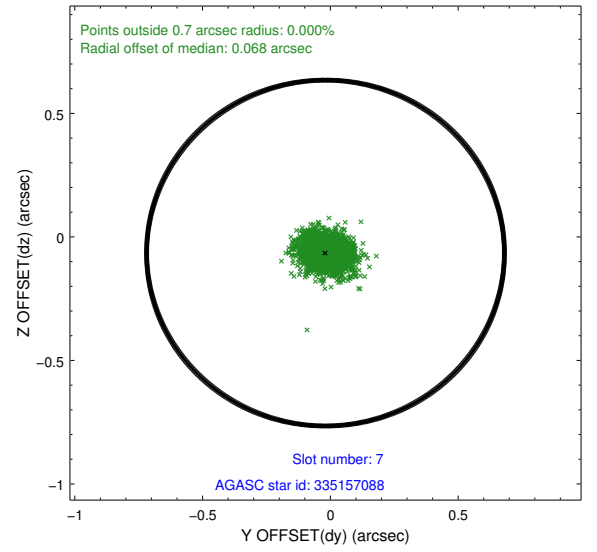
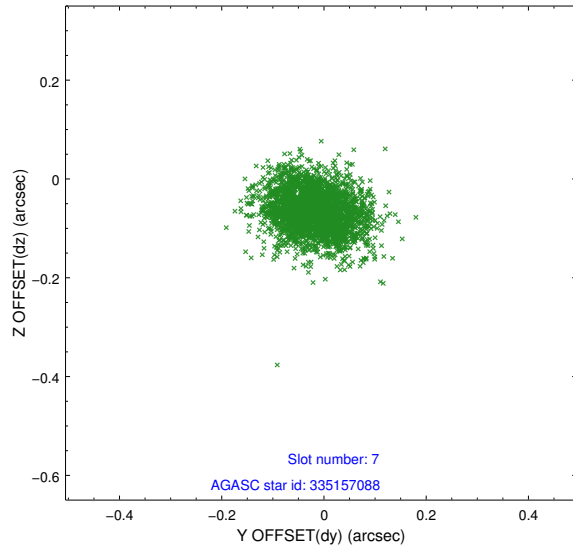
2.4.3 Slot 5



2.4.4 Slot 6

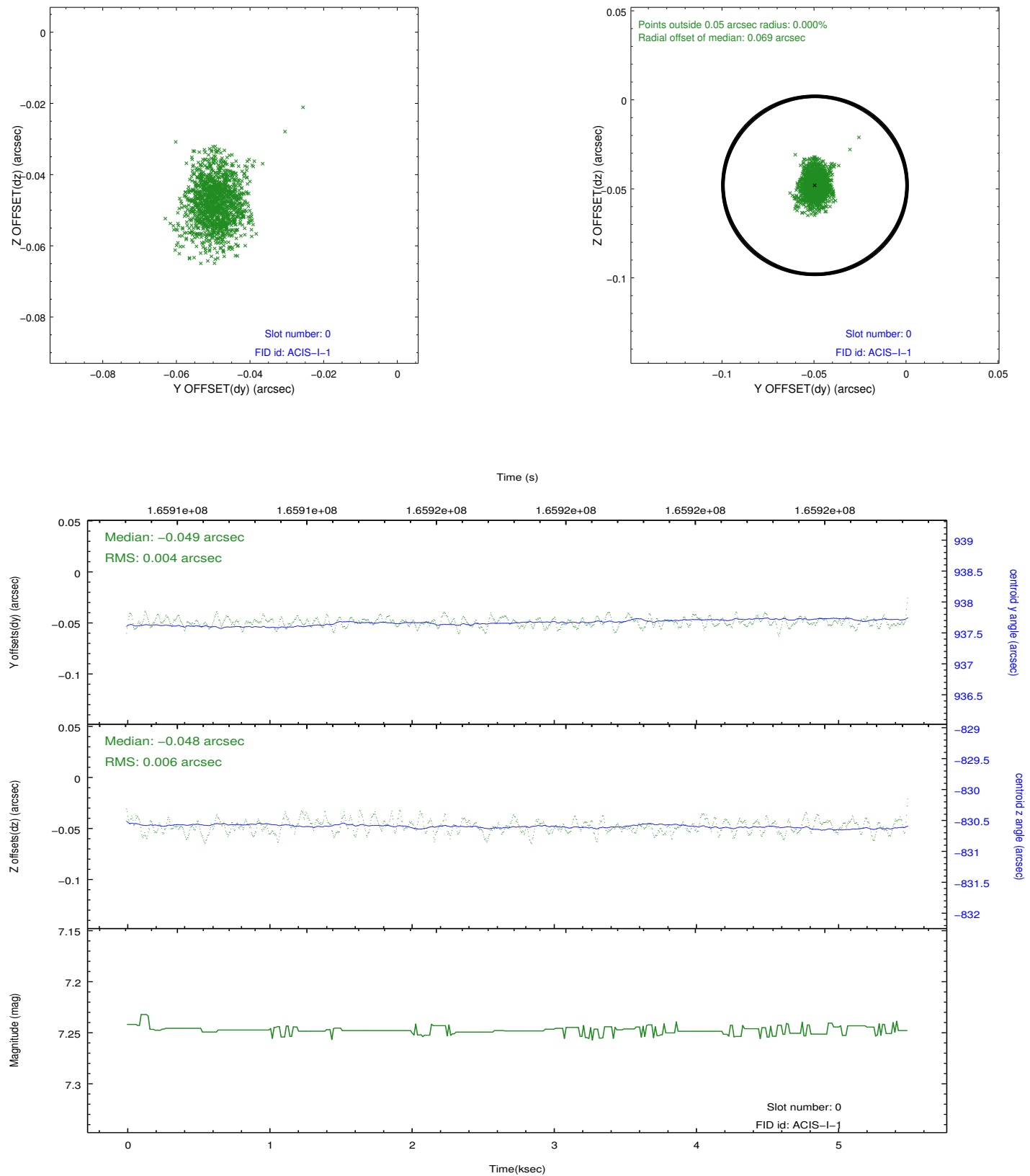


2.4.5 Slot 7

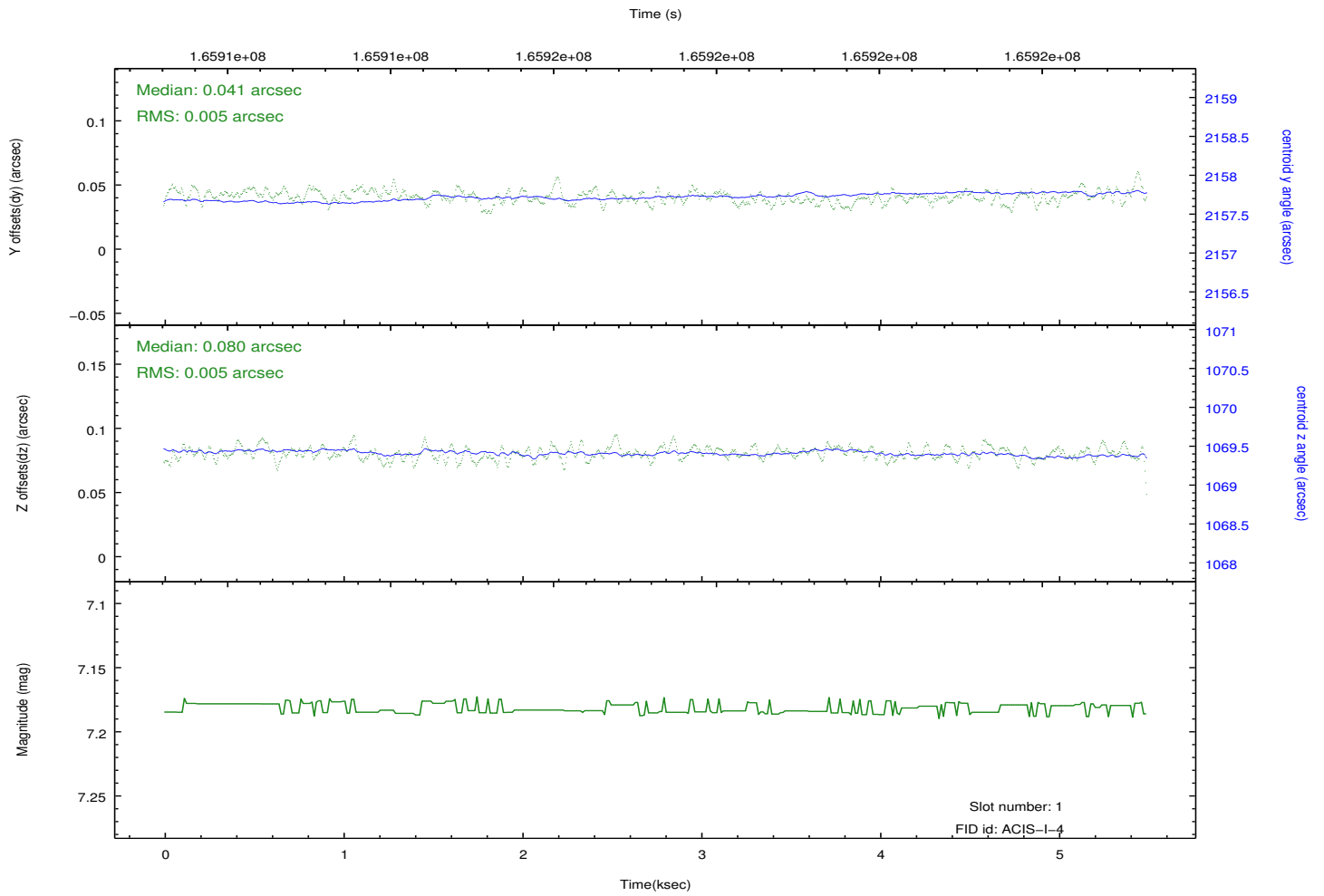
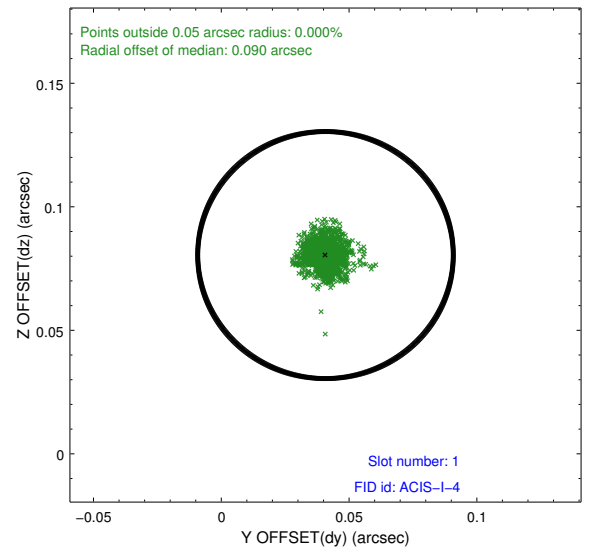
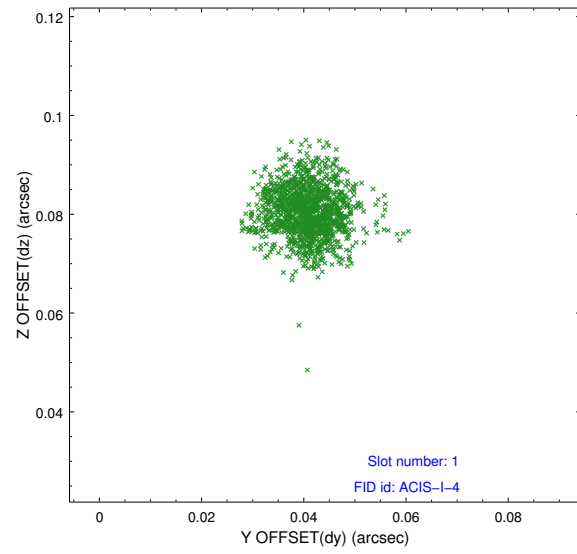


2.5 FID Slots

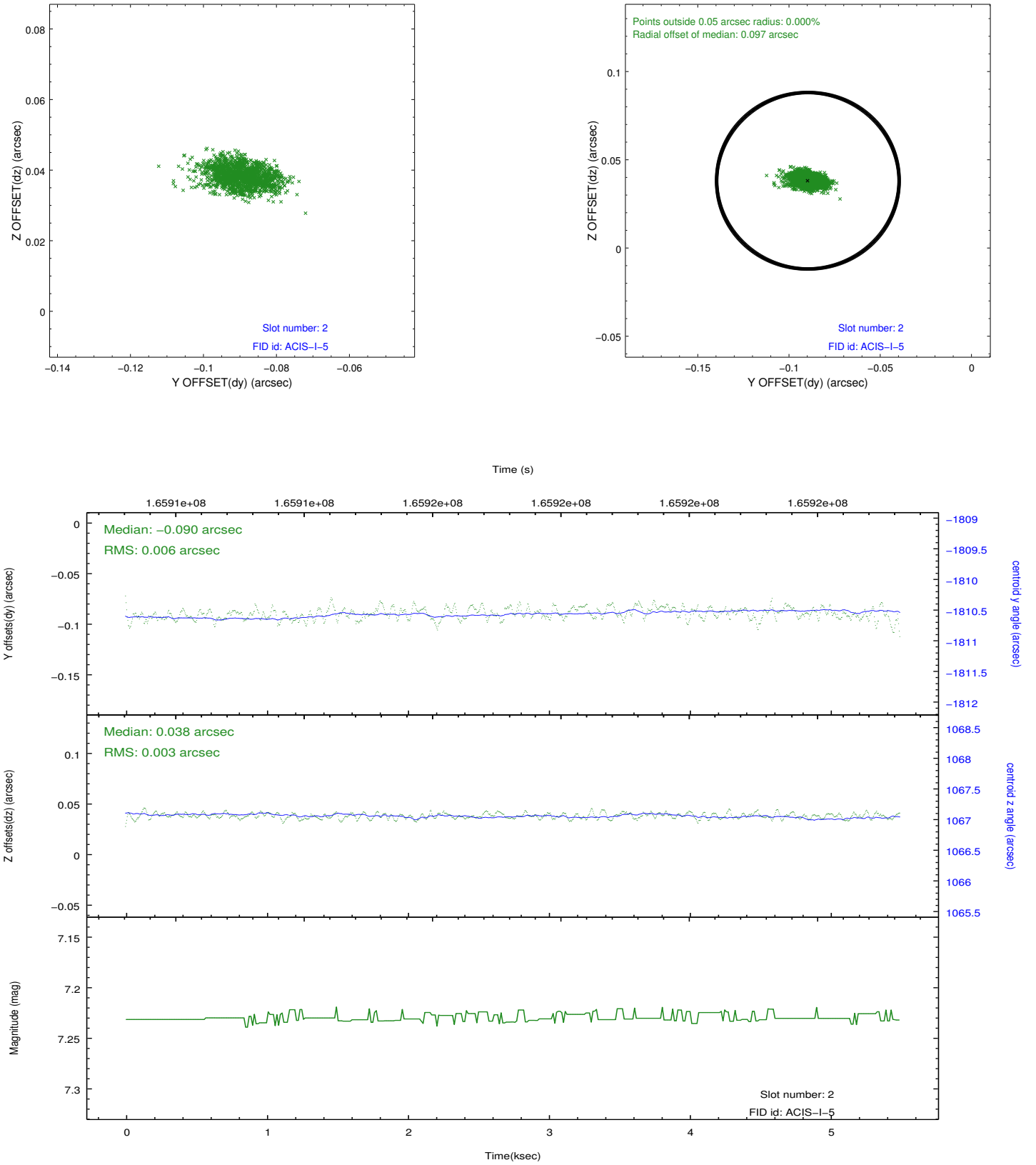
2.5.1 Slot 0



2.5.2 Slot 1



2.5.3 Slot 2



A Summary

A.1 Status

V&V Scientist	Jen Lauer
V&V Date (YYYY-MM-DD)	2012.11.13
V&V Edition	1
V&V Disposition and Status	OK
V&V Charge Time	5.018

A.2 Comments