

V&V Reference Report

L2 ASCDS Version : 7.6.8

Observation 4128 - L2 Version 001
Chandra X-Ray Center

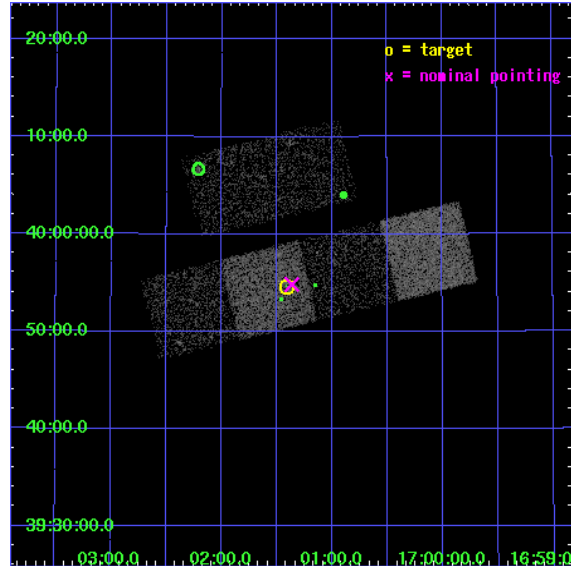
L2 Processing Date : Aug 2 2006

Contents

1	Front	2
2	OBI	3
2.1	OBI	3
2.1.1	Images	3
2.1.2	Bias	3
2.1.3	Parameters	4
2.1.4	Events	4
2.2	Compared Parameters	5
2.3	Aspect	6
2.4	Star Slots	9
2.4.1	Slot 3	9
2.4.2	Slot 4	10
2.4.3	Slot 5	11
2.4.4	Slot 6	12
2.4.5	Slot 7	13
2.5	FID Slots	14
2.5.1	Slot 0	14
2.5.2	Slot 1	15
2.5.3	Slot 2	16
3	Point Sources	17
A	Summary	18
A.1	Status	18
A.2	Comments	18

1 Front

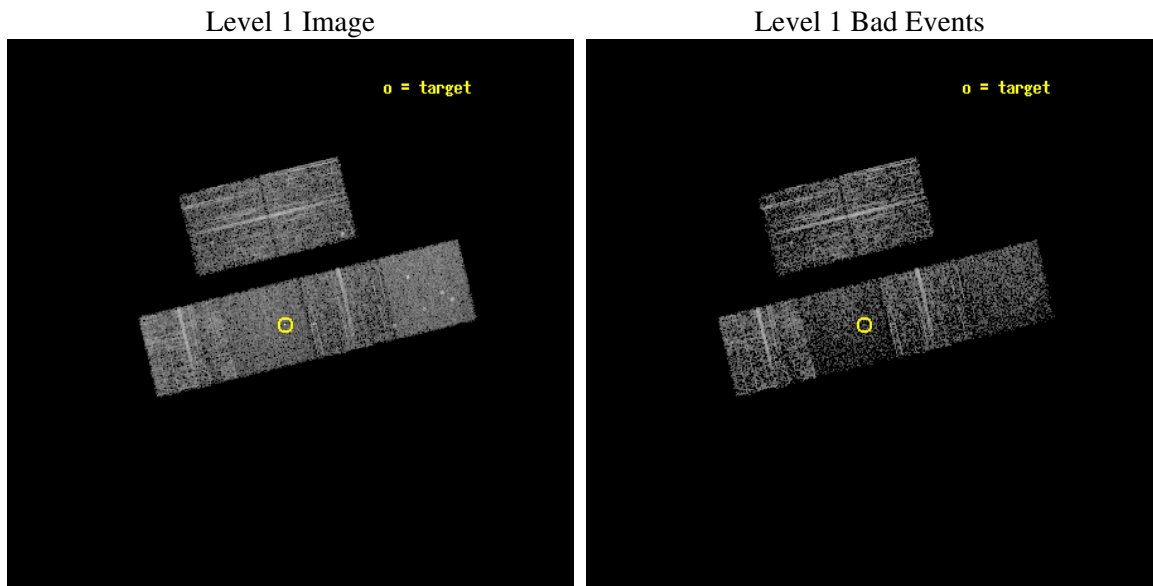
seq_num	700807
obs_id	4128
title	WHAT KIND OF JETS DOES NATURE MAKE? X-RAY CHARACTERIZATION OF THE FIRST FLAT SPECTRUM SAMPLE
observer	Dr. Giovanni Fossati
object	B3 1659+399
dtcycle	0
cycle	P
ra_targ	255.3525
dec_targ	39.910306
ra_nom	255.34095465369
dec_nom	39.914158518651
roll_nom	166.41045260263
revision	2
ontime	3638.3999864459
livetime	3592.3283750361
ontime2	3638.3999864459
ontime3	3631.9180659354
ontime5	3638.3999864459
ontime6	3638.3999864459
ontime7	3638.3999864459
ontime8	3638.3999864459
l2events	24661



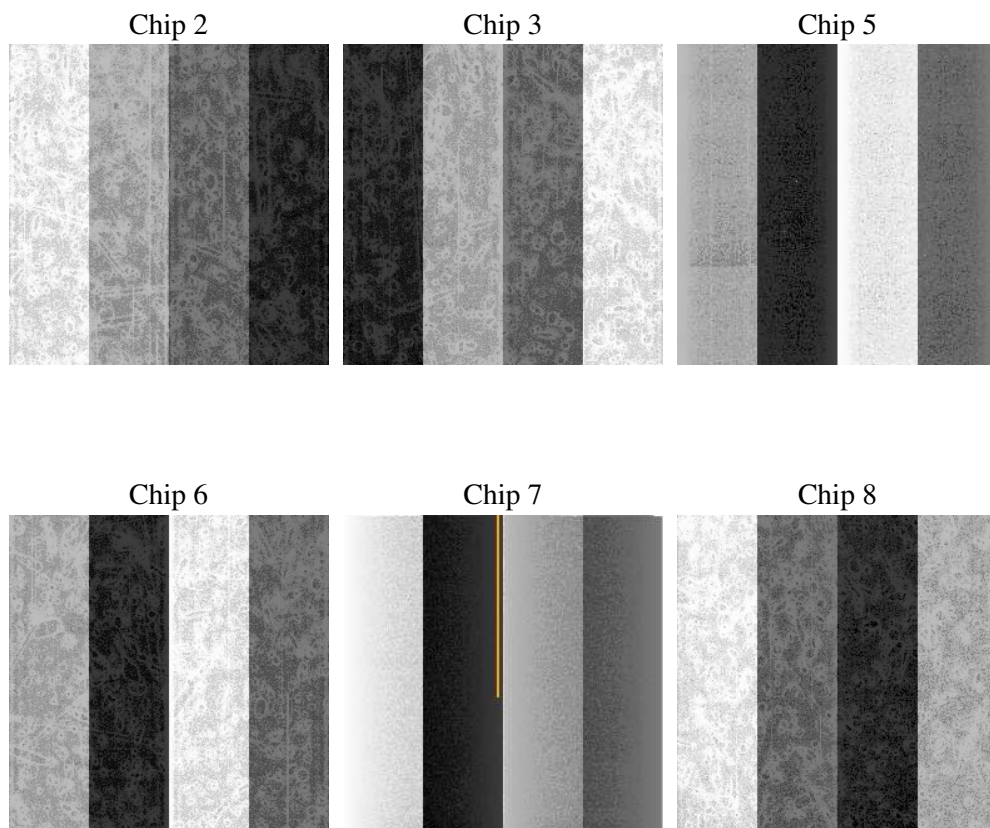
2 OBI

2.1 OBI

2.1.1 Images



2.1.2 Bias



2.1.3 Parameters

obi_num	2
ascdsver	7.6.8
caldsver	3.2.2
date	2006-08-03T02:03:56
revision	2

sched_exp_time	3500.000000
ontime	4602.2222653329
ontime2	4602.2222653329
ontime3	4598.981364876
ontime5	4602.2222653329
ontime6	4602.2222653329
ontime7	4602.2222653329
ontime8	4605.4632853866
l1events	148426

2.1.4 Events

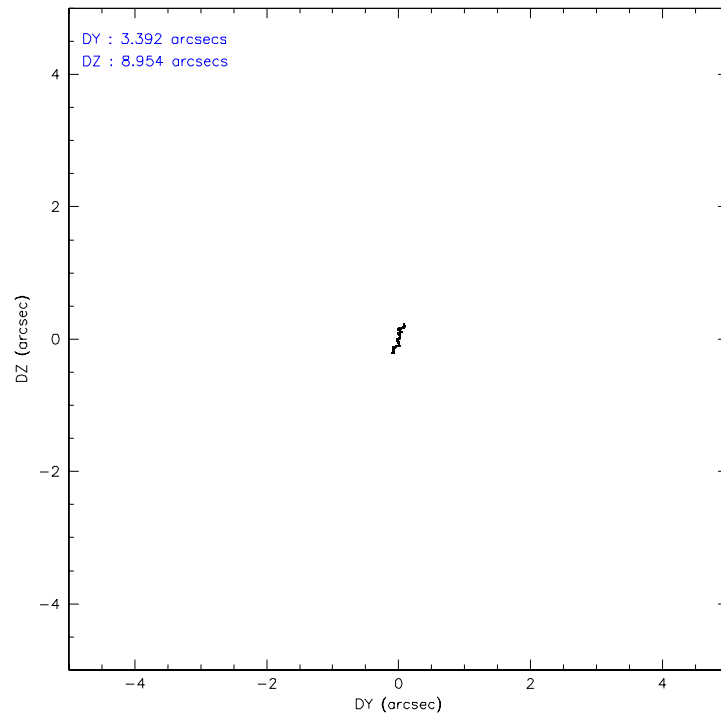
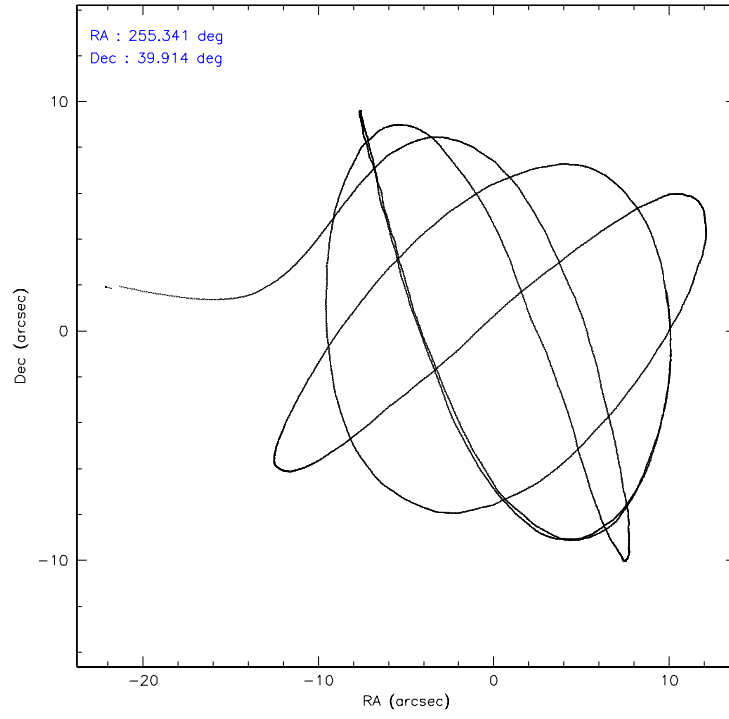
	ccd 2	ccd 3	ccd 5	ccd 6	ccd 7	ccd 8
level 1 events	25067	22580	27600	22010	21360	29809
rejected events	23107	20827	16359	20052	13426	24399
rejected %	92%	92%	59%	91%	62%	81%

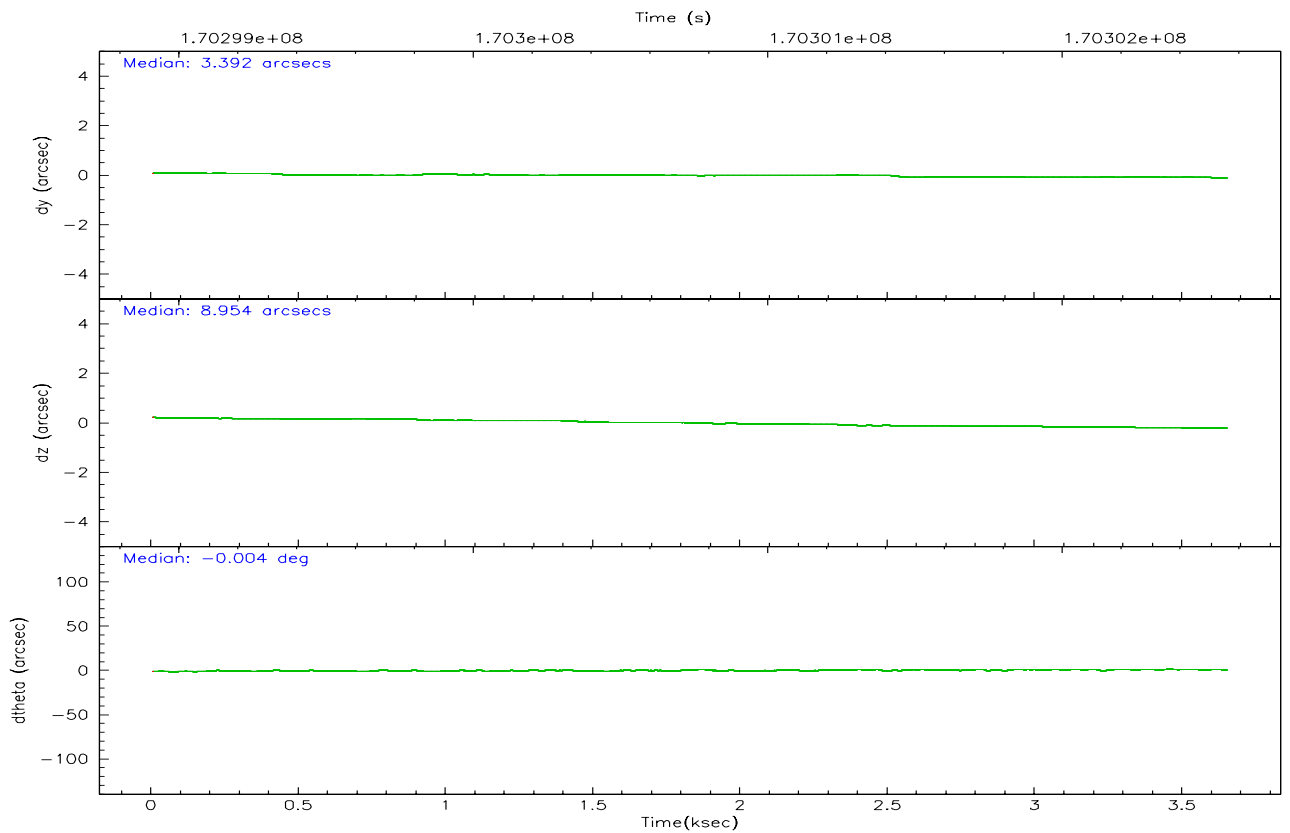
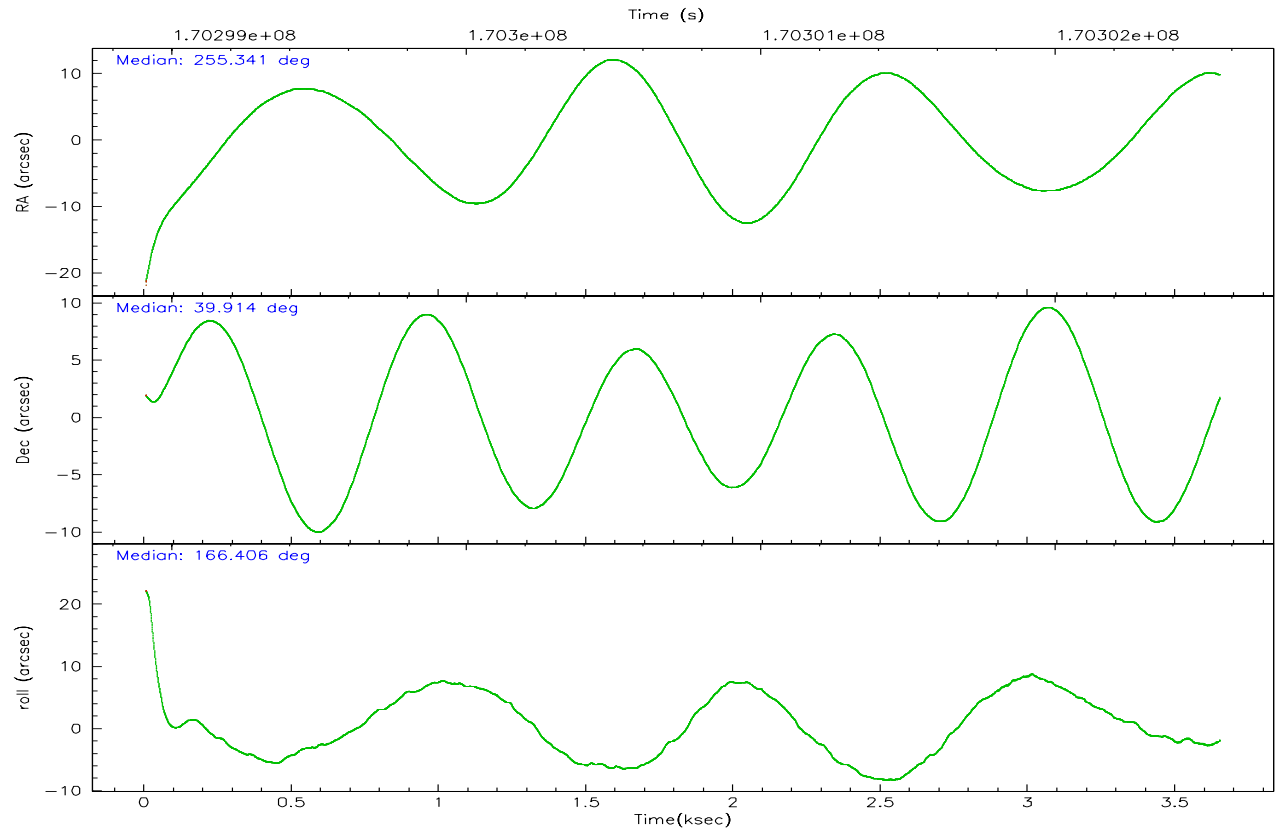
	ccd 2	ccd 3	ccd 5	ccd 6	ccd 7	ccd 8
grade 0 events	966	829	1332	899	809	1832
	3%	3%	4%	4%	3%	6%
grade 1 events	9	12	34	15	12	20
	0%	0%	0%	0%	0%	0%
grade 2 events	561	426	4476	471	2474	1503
	2%	1%	16%	2%	11%	5%
grade 3 events	247	275	428	310	668	844
	0%	1%	1%	1%	3%	2%
grade 4 events	237	227	381	255	612	724
	0%	1%	1%	1%	2%	2%
grade 5 events	658	705	1585	722	1675	1166
	2%	3%	5%	3%	7%	3%
grade 6 events	376	424	7596	482	5337	1856
	1%	1%	27%	2%	24%	6%
grade 7 events	22013	19682	11768	18856	9773	21864
	87%	87%	42%	85%	45%	73%

2.2 Compared Parameters

Parameter	Planned	Actual	Parameter	Planned	Actual
Instrument	ACIS	ACIS	Obspar format version number	6	6
Detector	ACIS-235678	ACIS-235678	Obspar file type	PREDICTED	ACTUAL
Grating	NONE	NONE	Obspar update status	NONE	UPDATED
Data mode	VFAINT	VFAINT	On-chip summing requested	N	N
Observation mode	POINTING	POINTING	Subarray requested	NONE	NONE
Pointing RA	255.374873	255.3409546536852	Alternating exposures requested	N	N
Pointing Dec	39.922238	39.91415851865106	Primary exposure time	0.000000	3.2
Pointing Roll	166.232003	166.4104526026251			
SIM focus pos (mm)	-0.684267	-0.6828225247311905			
SIM defocus (mm)	0	0.001444936568705701			
SIM translation stage pos (mm)	-190.132523	-190.1425803651734			
SIM translation stage offset (mm)	0	0.01005778216563158			
Observation start time	170299067.184000	170297536.63241			
Observation start date	2003-05-26T01:16:43	2003-05-26T00:52:16			
Observation end time	170302567.184000	170303239.22016			
Observation end date	2003-05-26T02:15:03	2003-05-26T02:27:19			
Read mode	TIMED	TIMED			

2.3 Aspect



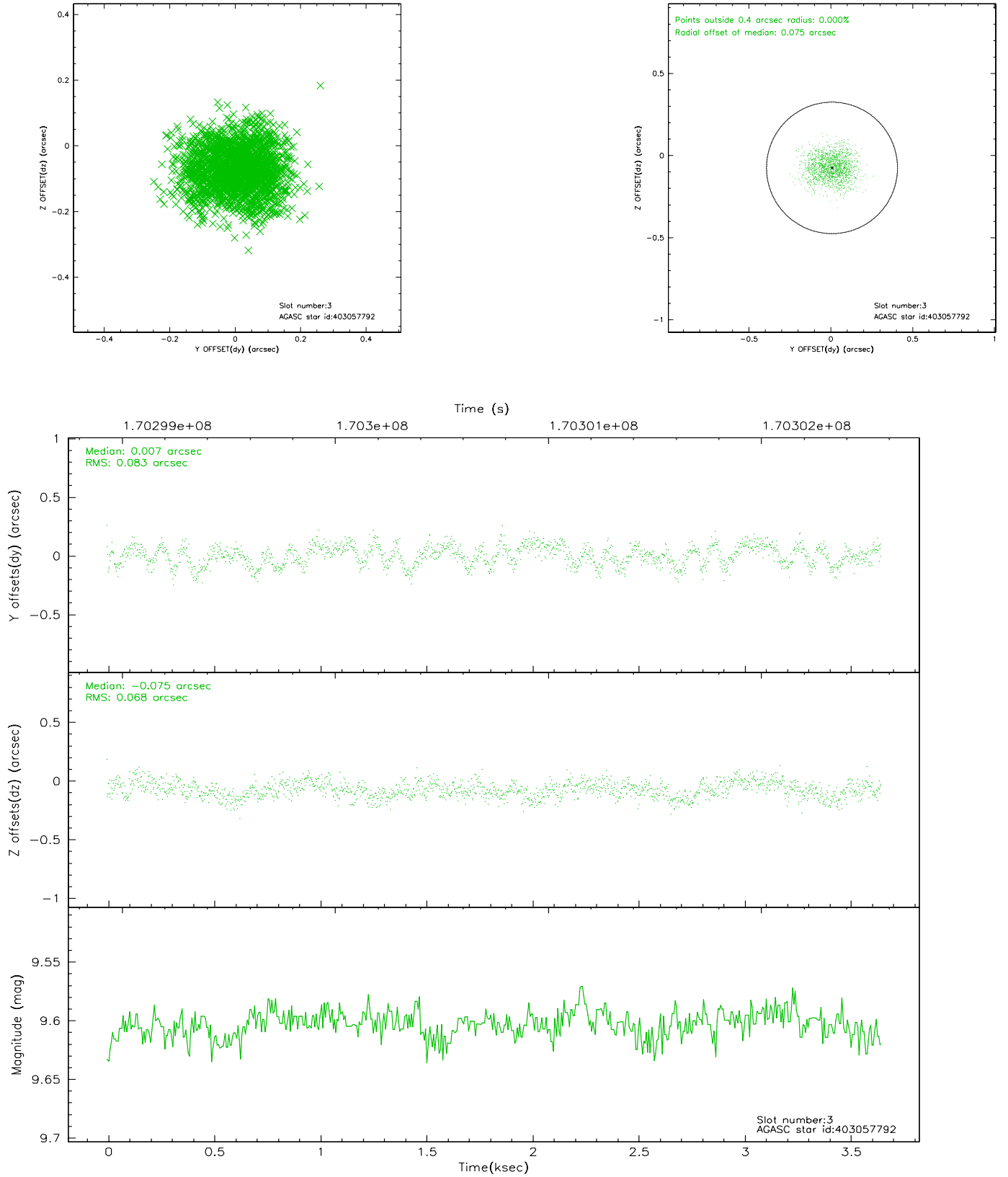


Slot Statistics

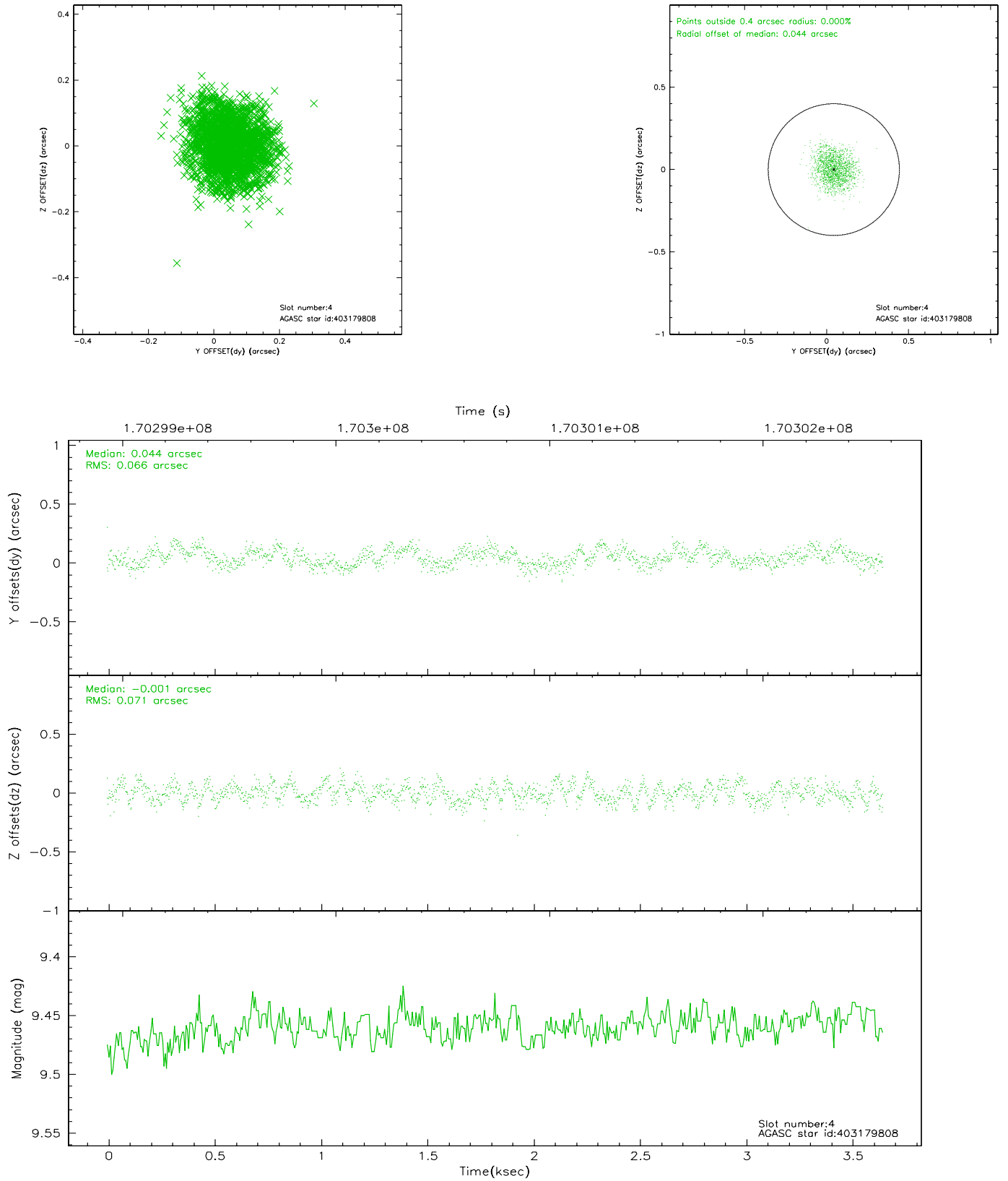
slot	status	id	mag	n_pts	med_dy	med_dz	dr1	dr2	ra	dec	mean_y	mean_z
0	FID	ACIS-S-2	7.11	890	-0.015	0.006	0.008	0.012	0.000000	0.000000	-756.04	-1730.12
1	FID	ACIS-S-4	7.20	890	-0.020	0.005	0.007	0.011	0.000000	0.000000	2156.44	176.60
2	FID	ACIS-S-5	7.24	890	0.003	-0.003	0.007	0.011	0.000000	0.000000	-1806.65	172.20
3	GUIDE	403057792	9.60	1780	0.007	-0.075	0.116	0.179	254.680453	39.420697	1447.85	2206.12
4	GUIDE	403179808	9.46	1779	0.044	-0.001	0.105	0.157	255.693754	40.436381	-406.61	-2005.90
5	GUIDE	403054896	8.73	1780	-0.046	0.051	0.075	0.119	254.417855	39.716866	2401.24	1334.17
6	GUIDE	403056336	9.61	1780	-0.008	-0.054	0.131	0.210	254.706314	39.541575	1479.64	1766.88
7	GUIDE	403184536	9.58	1778	0.000	0.085	0.131	0.210	255.997841	40.470667	-1184.70	-2328.44

2.4 Star Slots

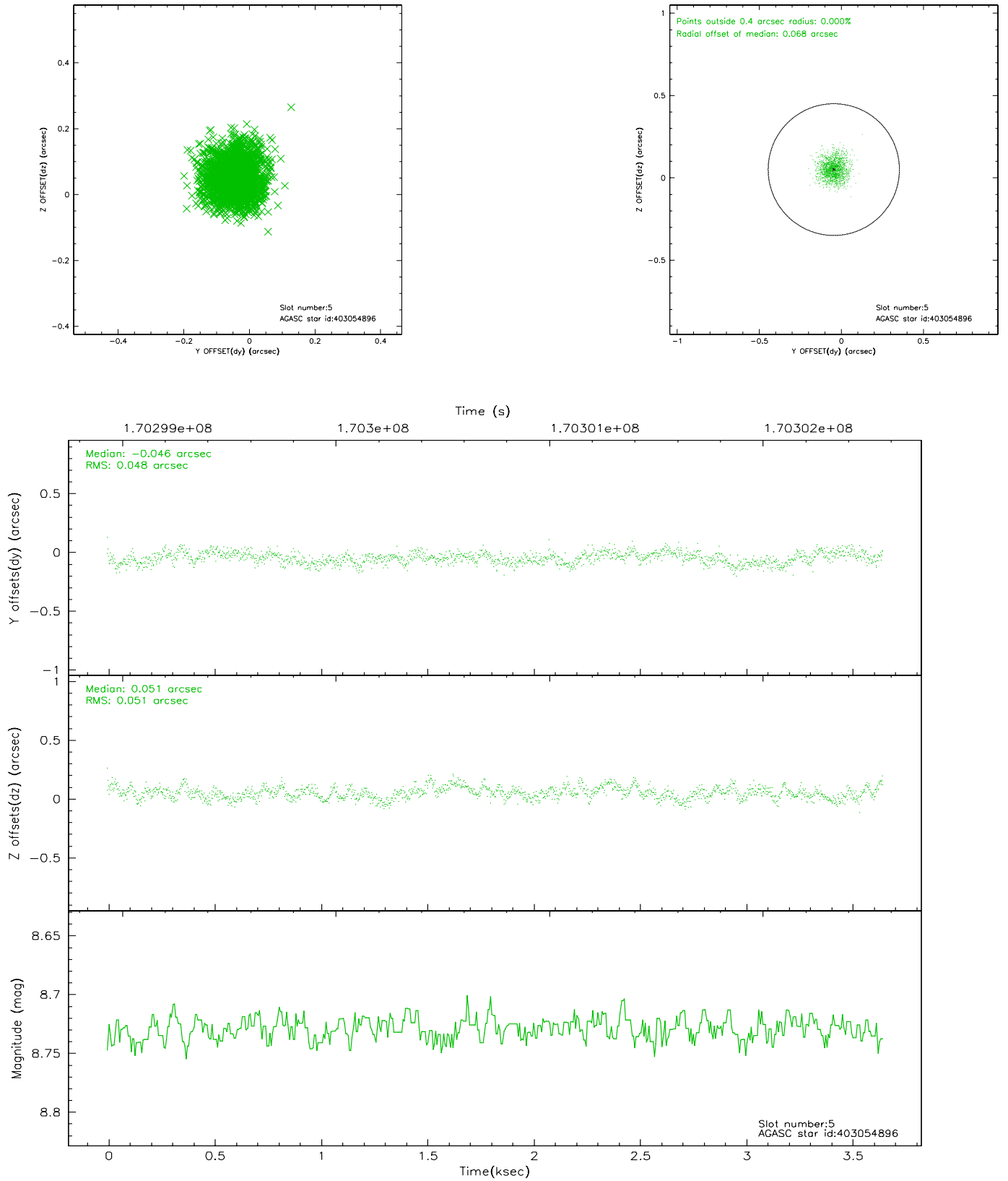
2.4.1 Slot 3



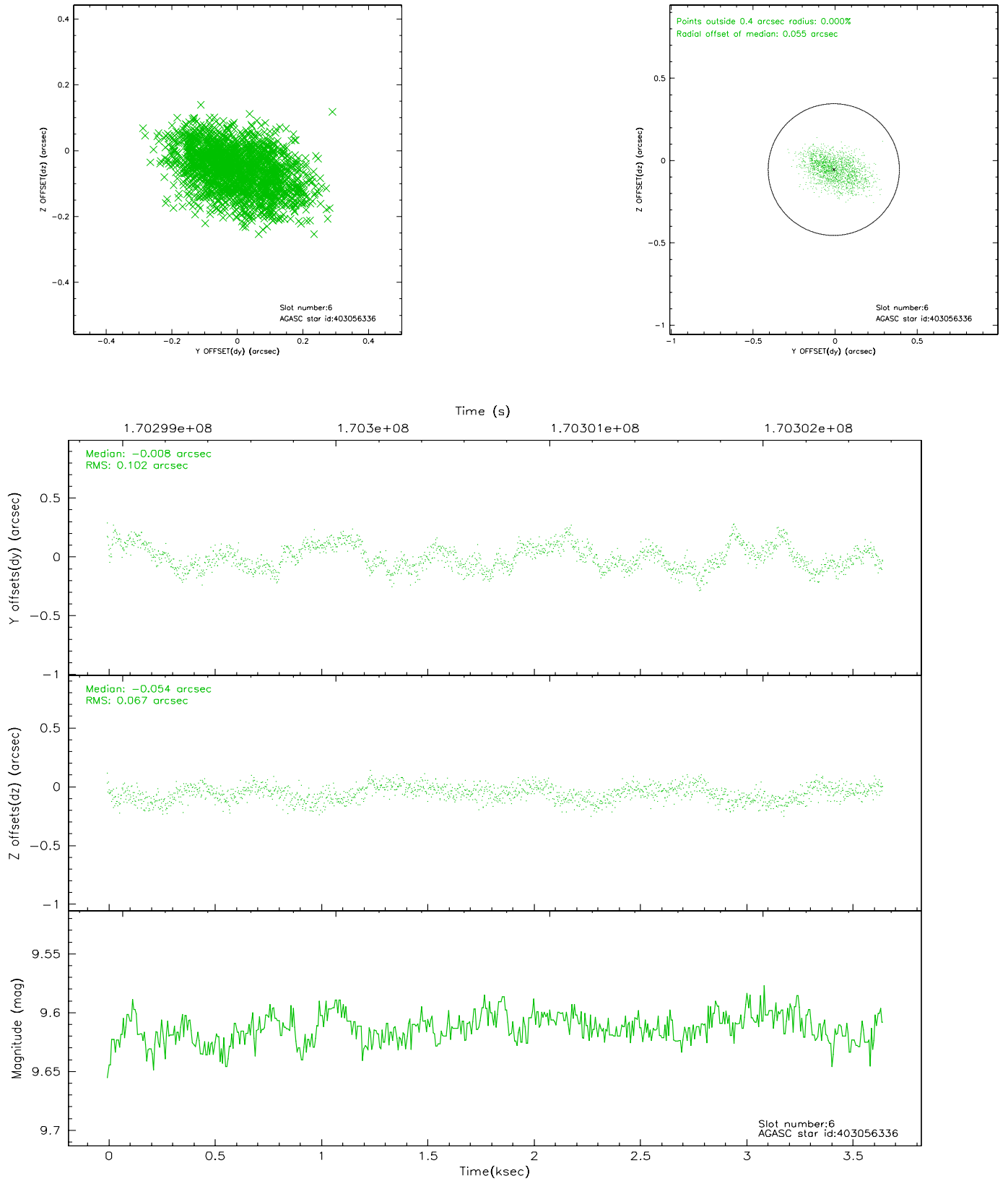
2.4.2 Slot 4



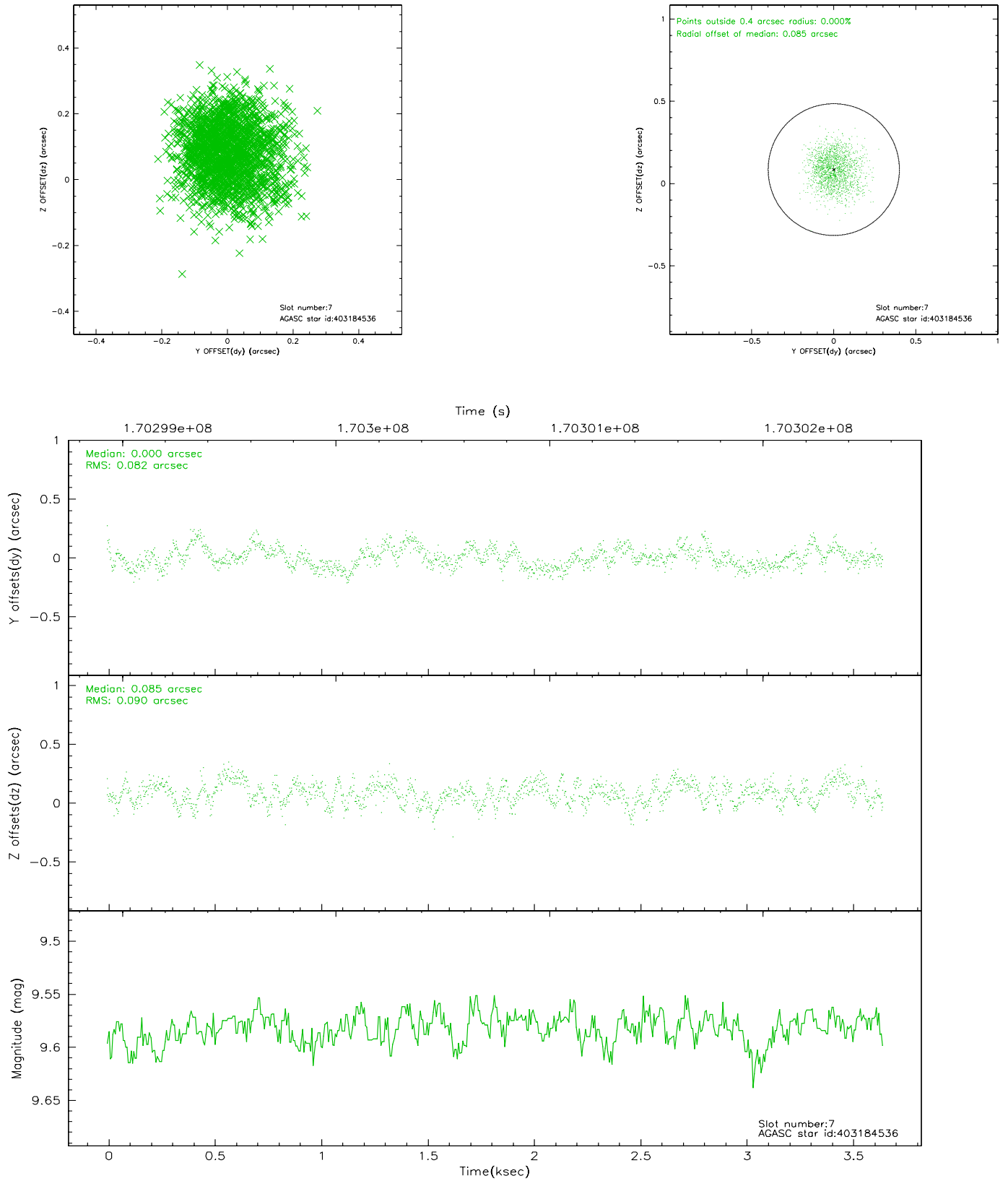
2.4.3 Slot 5



2.4.4 Slot 6

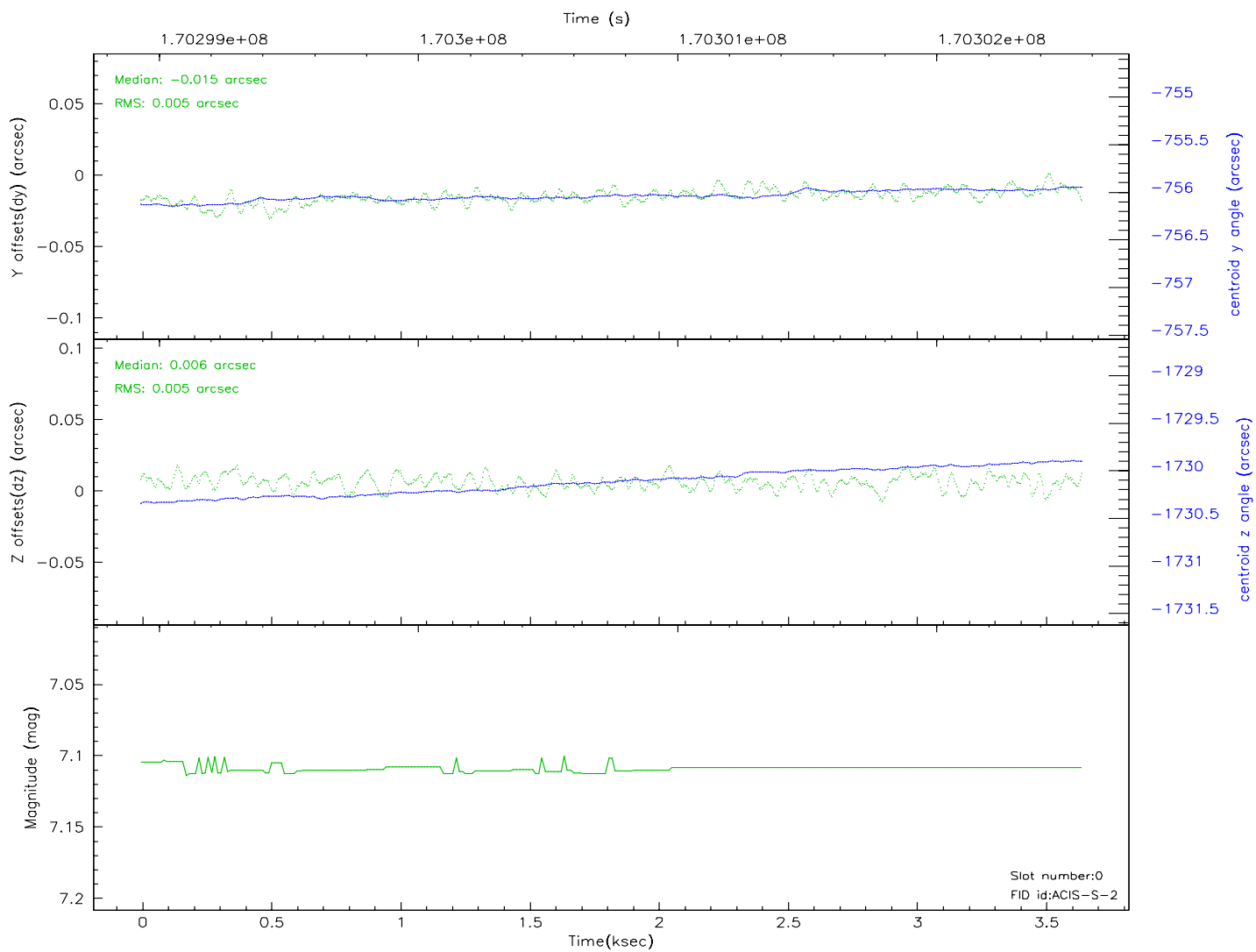
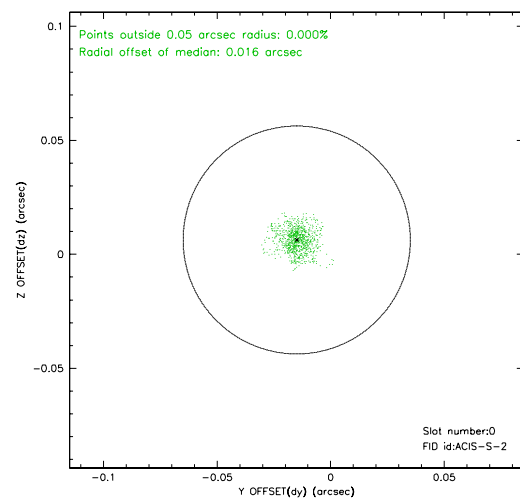
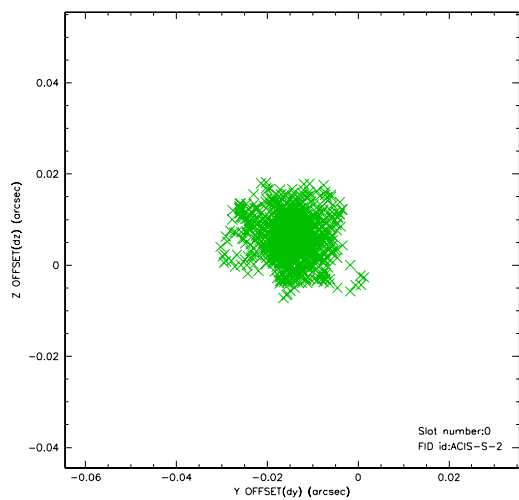


2.4.5 Slot 7

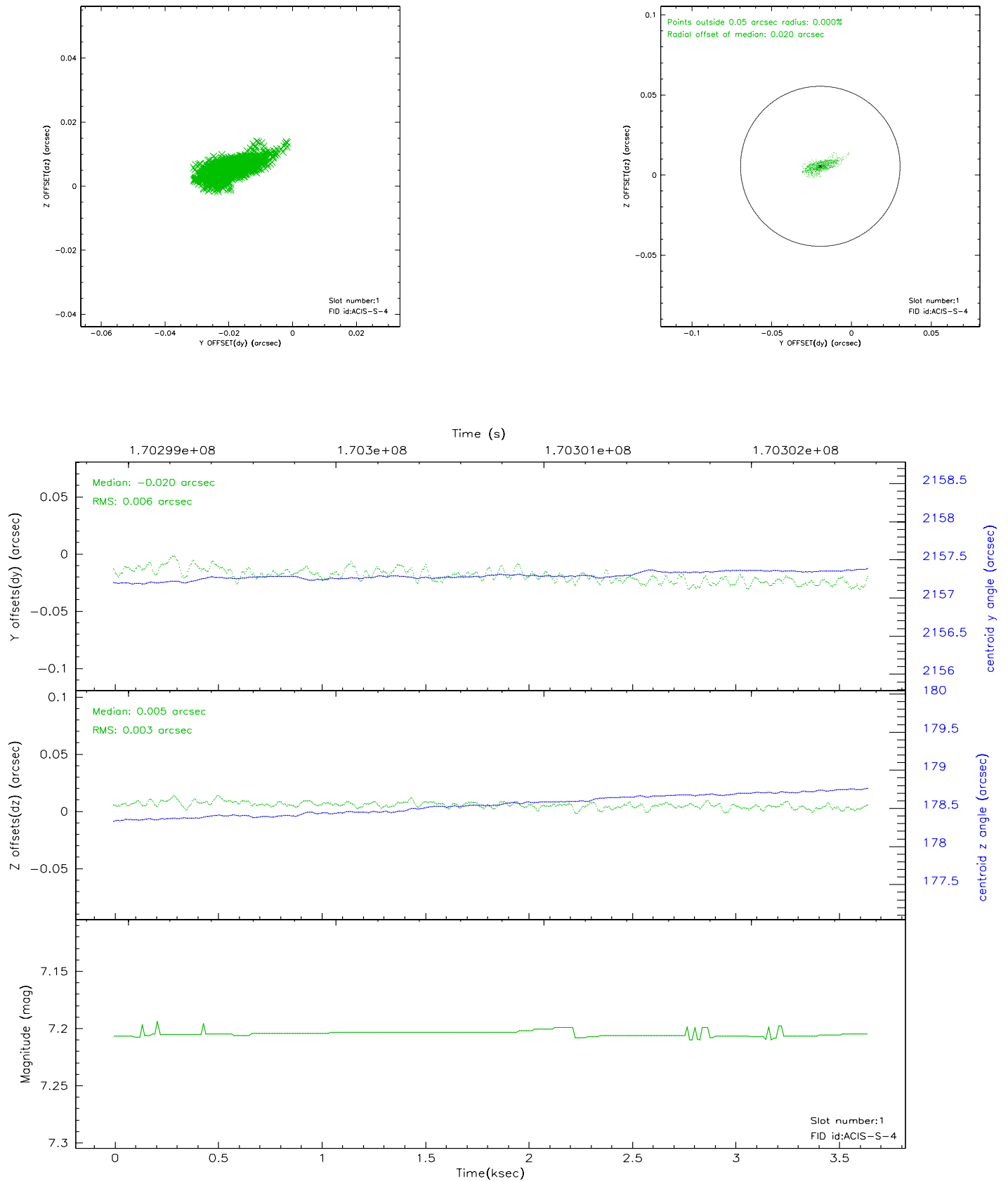


2.5 FID Slots

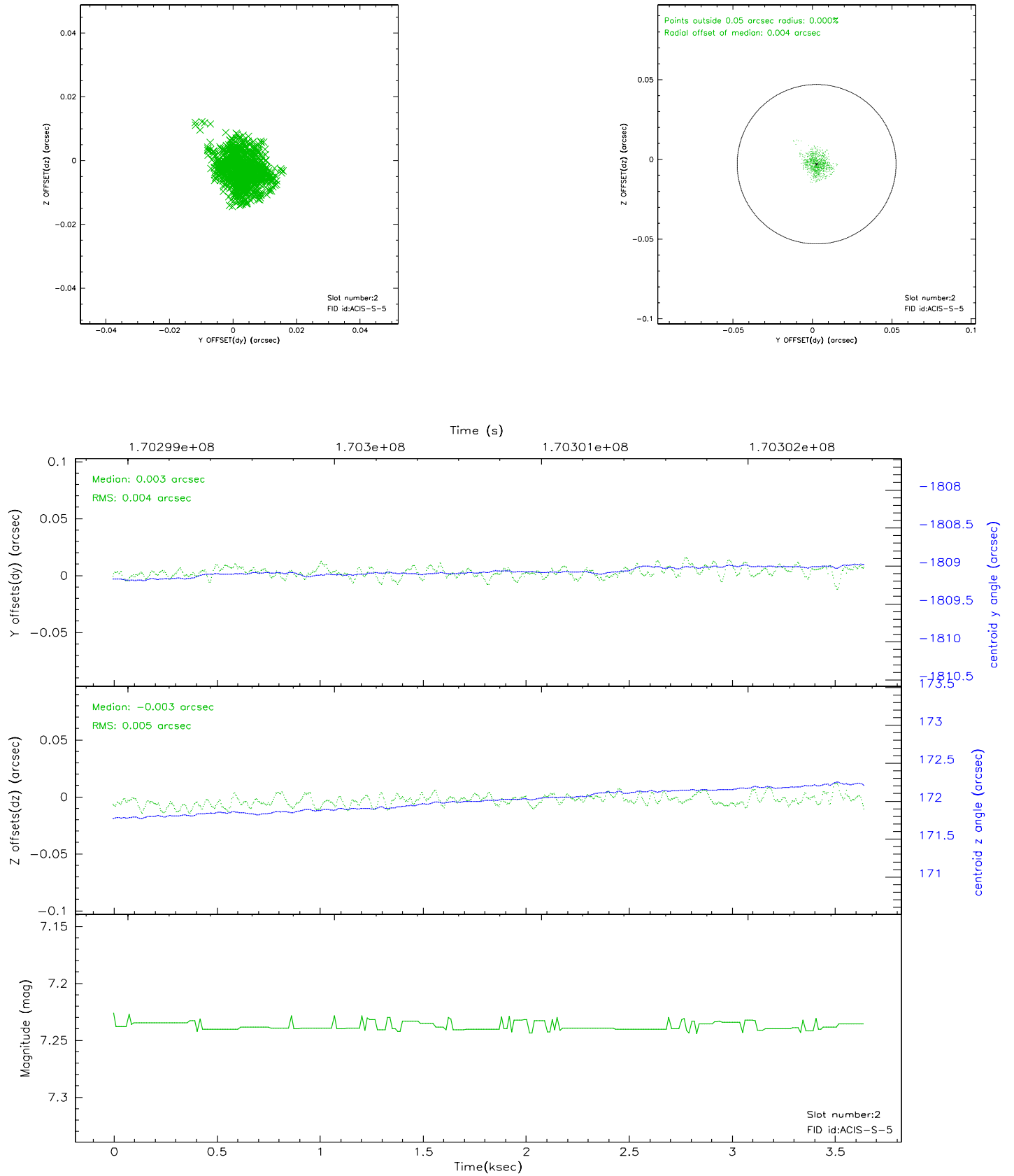
2.5.1 Slot 0



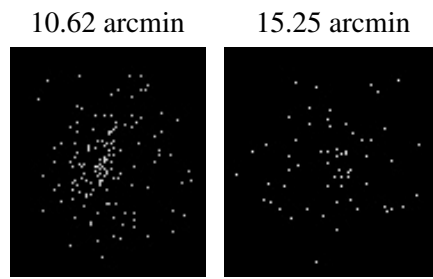
2.5.2 Slot 1



2.5.3 Slot 2



3 Point Sources



A Summary

A.1 Status

V&V Scientist	Beth Sundheim
V&V Date (YYYY-MM-DD)	2006.08.03
V&V Edition	1
V&V Disposition and Status	OK
V&V Charge Time	3.638

A.2 Comments