

V&V Reference Report

L2 ASCDS Version : 7.6.8

Observation 4038 - L2 Version 001
Chandra X-Ray Center

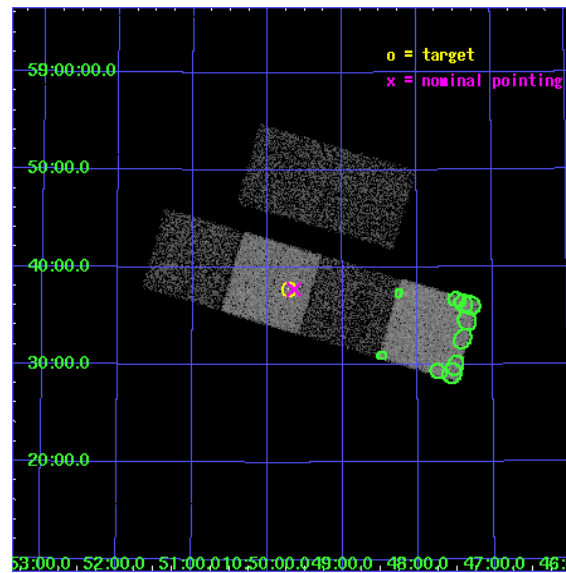
L2 Processing Date : Jul 24 2006

Contents

1	Front	2
2	OBI	3
2.1	OBI	3
2.1.1	Images	3
2.1.2	Bias	3
2.1.3	Parameters	4
2.1.4	Events	4
2.2	Compared Parameters	5
2.3	Aspect	6
2.4	Star Slots	9
2.4.1	Slot 3	9
2.4.2	Slot 4	10
2.4.3	Slot 5	11
2.4.4	Slot 6	12
2.4.5	Slot 7	13
2.5	FID Slots	14
2.5.1	Slot 0	14
2.5.2	Slot 1	15
2.5.3	Slot 2	16
3	Point Sources	17
A	Summary	18
A.1	Status	18
A.2	Comments	18

1 Front

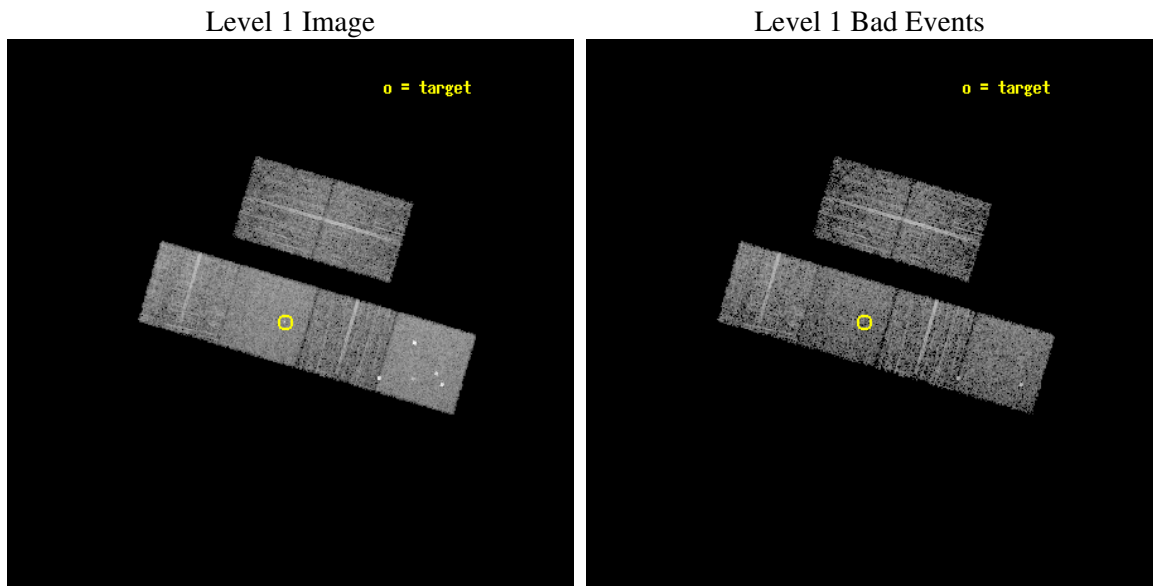
seq_num	700717
obs_id	4038
title	WHY DO WE SEE BROAD LINES IN X-RAY ABSORBED AGN?
observer	Dr. BELINDA WILKES
object	2MASS104943+583750
dtcycle	0
cycle	P
ra_targ	162.430833
dec_targ	58.630667
ra_nom	162.41223108897
dec_nom	58.629636034581
roll_nom	196.37836636922
revision	2
ontime	4755.1999822855
livetime	4694.9867768721
ontime2	4755.1999822855
ontime3	4755.1999822855
ontime5	4755.1999822855
ontime6	4755.1999822855
ontime7	4755.1999822855
ontime8	4751.9589920342
l2events	46203



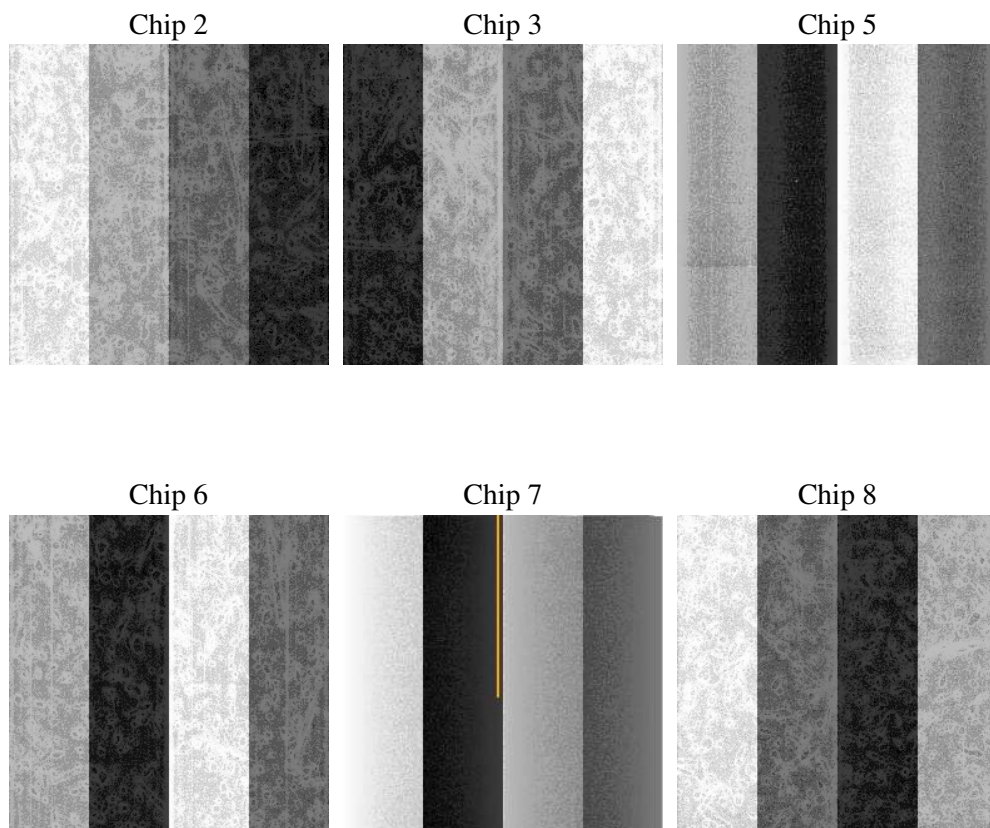
2 OBI

2.1 OBI

2.1.1 Images



2.1.2 Bias



2.1.3 Parameters

obi_num	0
ascdsver	7.6.8
caldsver	3.2.2
date	2006-07-24T17:33:39
revision	2

sched_exp_time	5000.000000
ontime	4757.8014702797
ontime2	4757.8014702797
ontime3	4761.0424903333
ontime5	4757.8014702797
ontime6	4757.8014702797
ontime7	4757.8014702797
ontime8	4757.8014104962
l1events	217607

2.1.4 Events

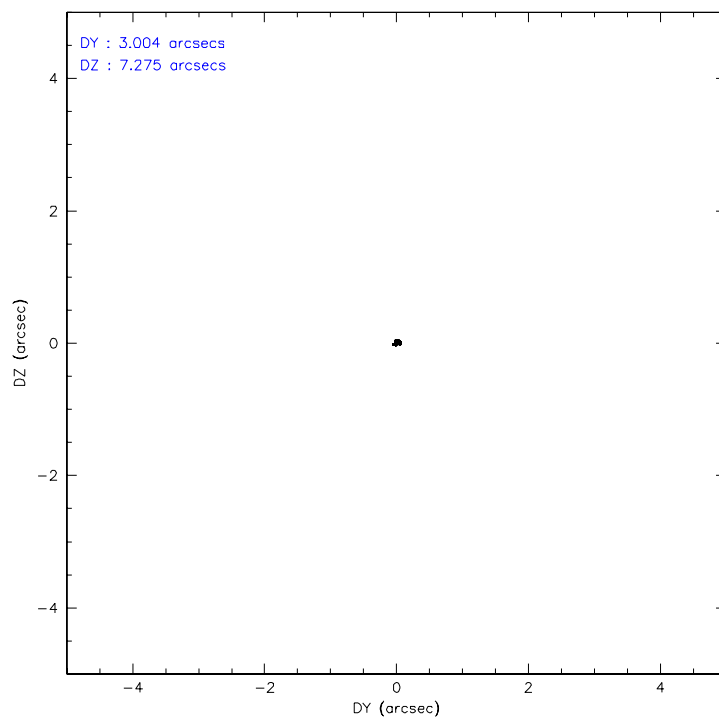
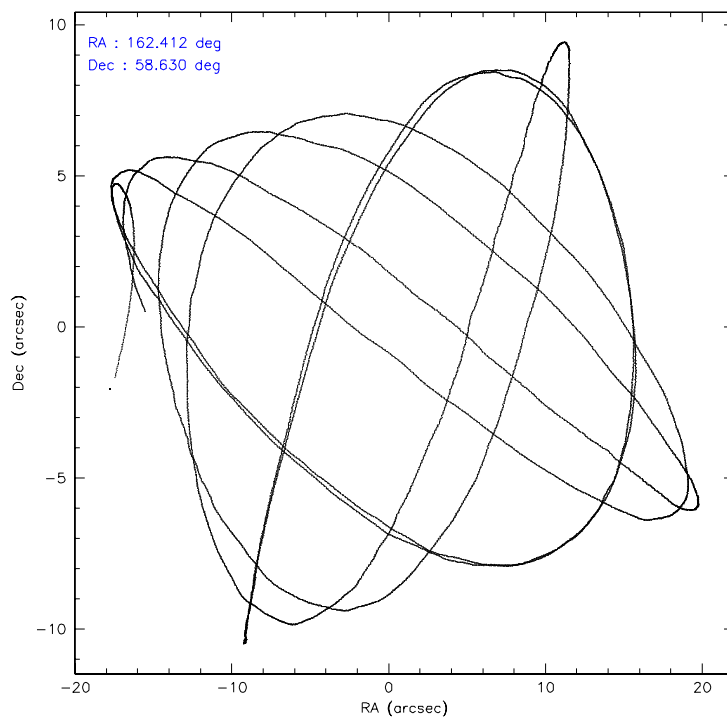
	ccd 2	ccd 3	ccd 5	ccd 6	ccd 7	ccd 8
level 1 events	30342	28578	47475	29733	40620	40859
rejected events	26926	25341	25388	26283	24799	33028
rejected %	88%	88%	53%	88%	61%	80%

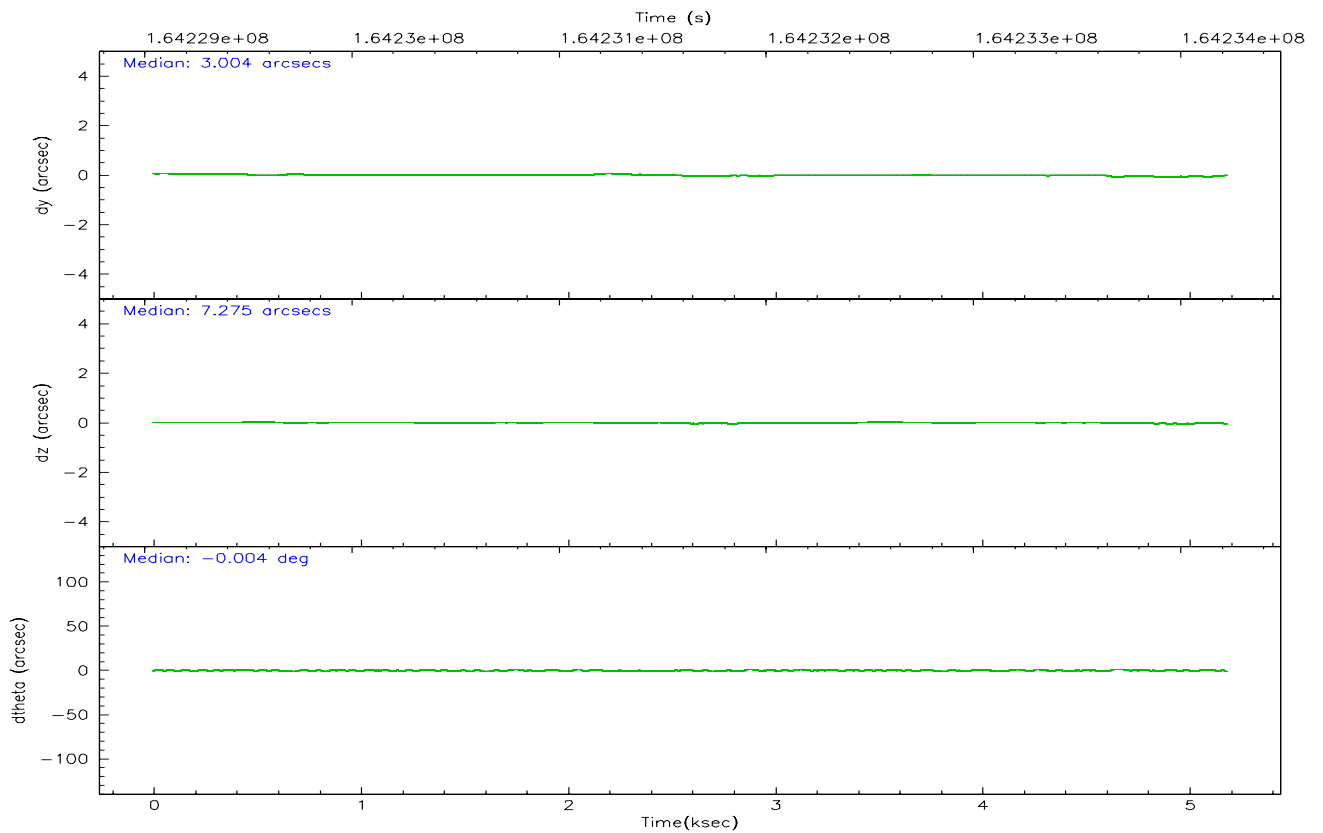
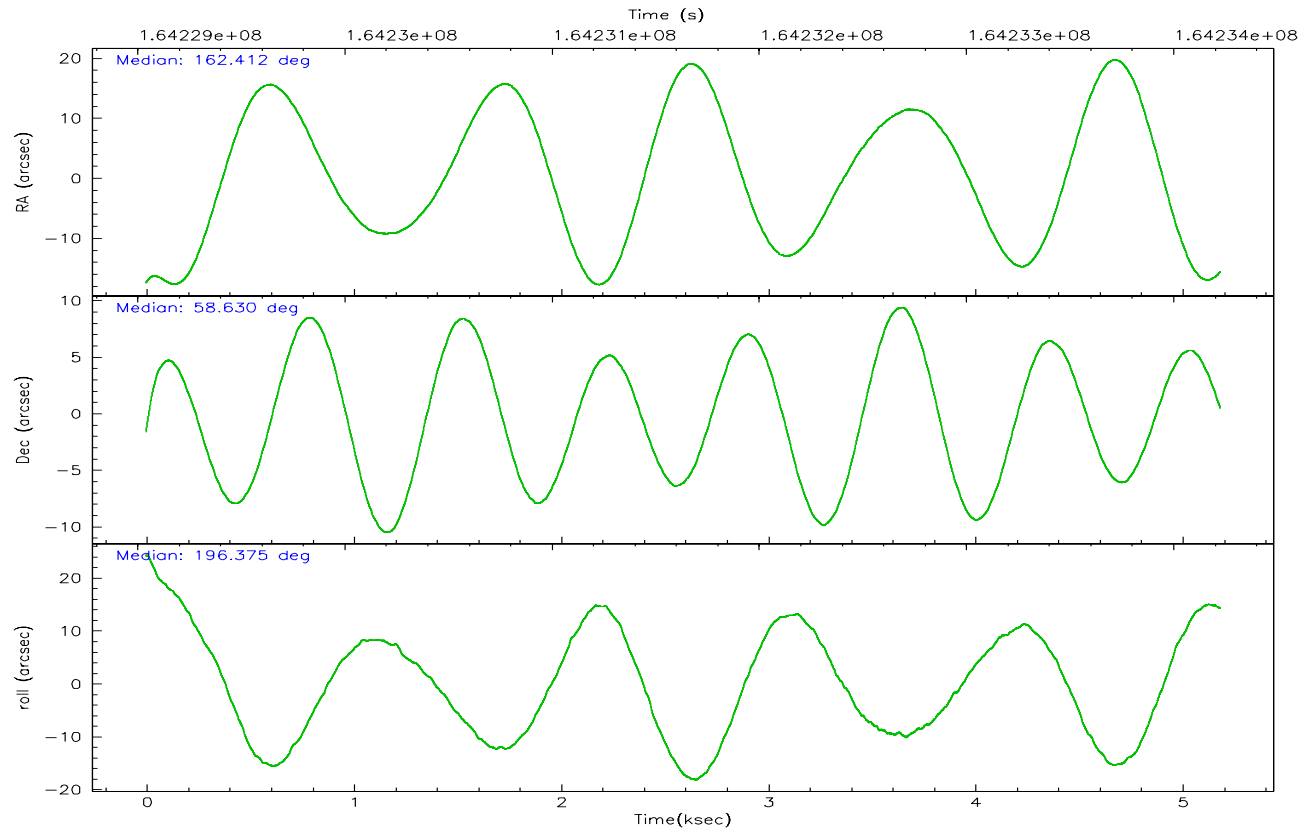
	ccd 2	ccd 3	ccd 5	ccd 6	ccd 7	ccd 8
grade 0 events	1514	1439	3418	1326	1012	2508
	4%	5%	7%	4%	2%	6%
grade 1 events	12	17	361	11	21	26
	0%	0%	0%	0%	0%	0%
grade 2 events	676	622	6145	729	3980	1658
	2%	2%	12%	2%	9%	4%
grade 3 events	317	299	537	361	890	796
	1%	1%	1%	1%	2%	1%
grade 4 events	349	333	515	324	845	802
	1%	1%	1%	1%	2%	1%
grade 5 events	1167	1246	2335	1365	2708	1710
	3%	4%	4%	4%	6%	4%
grade 6 events	563	547	11489	711	9106	2071
	1%	1%	24%	2%	22%	5%
grade 7 events	25744	24075	22675	24906	22058	31288
	84%	84%	47%	83%	54%	76%

2.2 Compared Parameters

Parameter	Planned	Actual	Parameter	Planned	Actual
Instrument	ACIS	ACIS	Obspar format version number	6	6
Detector	ACIS-235678	ACIS-235678	Obspar file type	PREDICTED	ACTUAL
Grating	NONE	NONE	Obspar update status	NONE	UPDATED
Data mode	FAINT	FAINT	On-chip summing requested	N	N
Observation mode	POINTING	POINTING	Subarray requested	NONE	NONE
Pointing RA	162.447962	162.4122310889693	Alternating exposures requested	N	N
Pointing Dec	58.649569	58.62963603458138	Primary exposure time	0.000000	3.2
Pointing Roll	196.191215	196.3783663692154			
SIM focus pos (mm)	-0.684267	-0.6828225247311905			
SIM defocus (mm)	0	0.001444936568705701			
SIM translation stage pos (mm)	-190.132523	-190.1400660498719			
SIM translation stage offset (mm)	0	0.00754346686406393			
Observation start time	164229220.184000	164228535.46347			
Observation start date	2003-03-16T19:12:36	2003-03-16T19:02:15			
Observation end time	164234220.184000	164234593.72622			
Observation end date	2003-03-16T20:35:56	2003-03-16T20:43:13			
Read mode	TIMED	TIMED			

2.3 Aspect



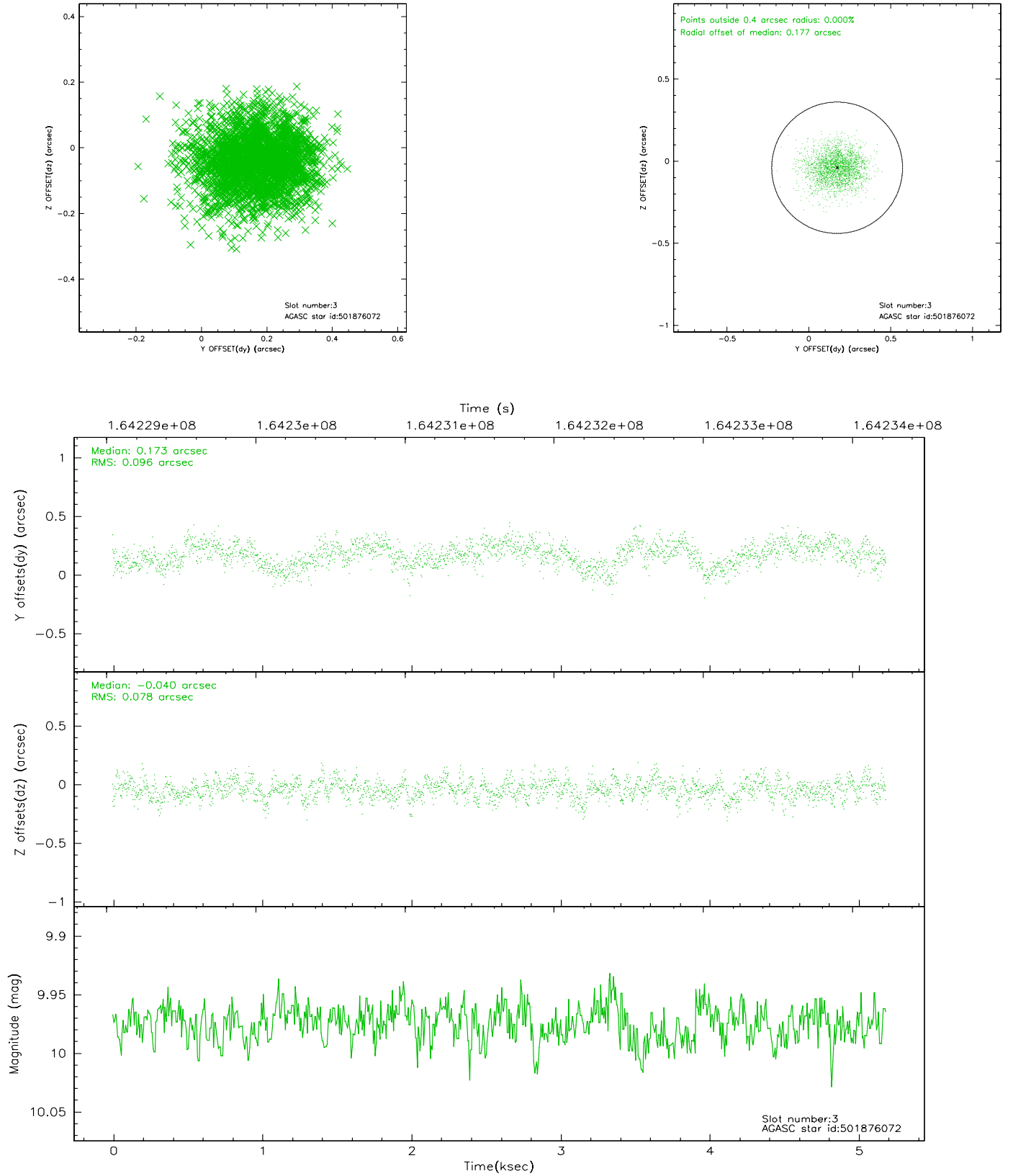


Slot Statistics

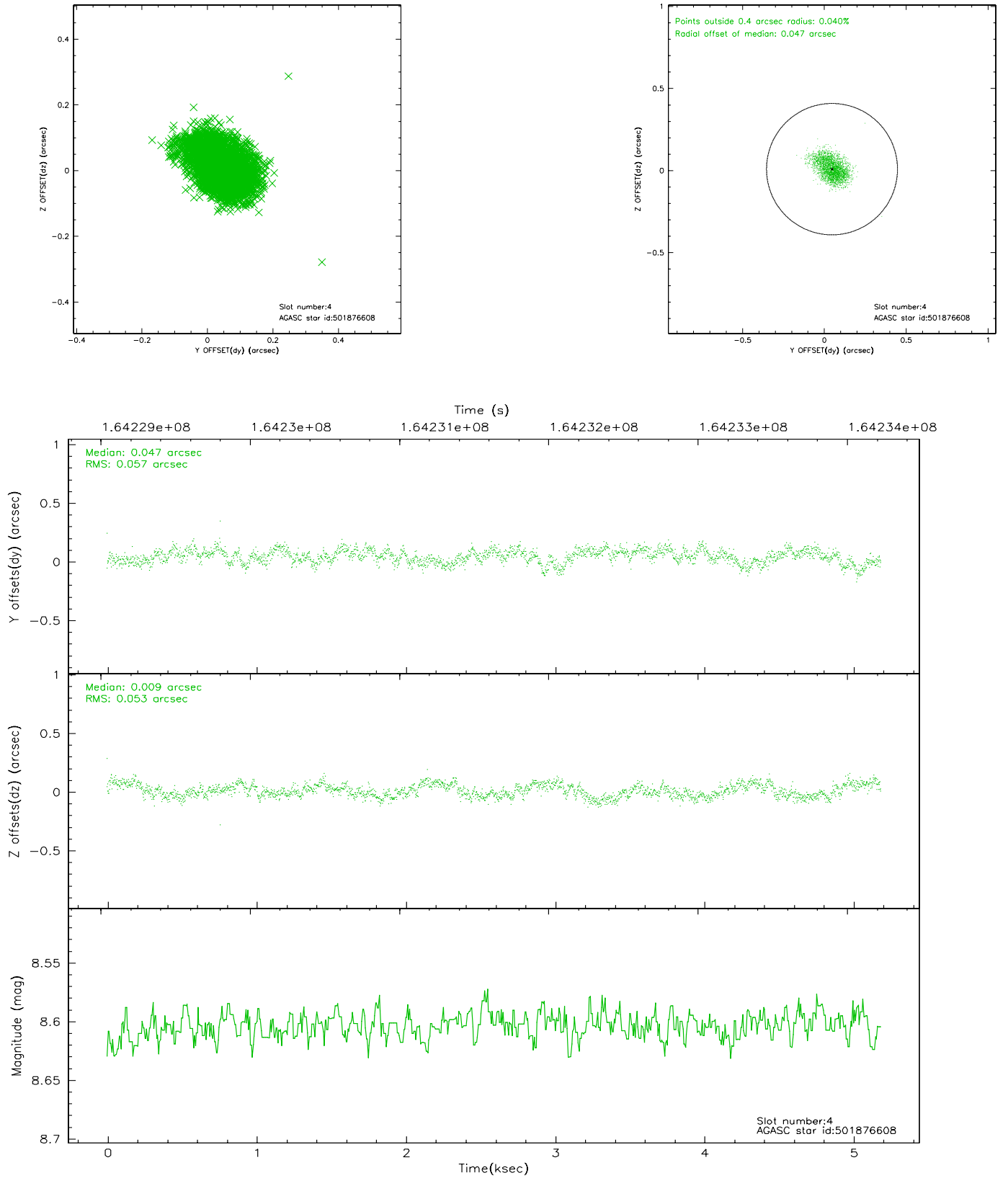
slot	status	id	mag	n_pts	med_dy	med_dz	dr1	dr2	ra	dec	mean_y	mean_z
0	FID	ACIS-S-2	7.11	1265	-0.014	0.013	0.007	0.011	0.000000	0.000000	-755.66	-1728.44
1	FID	ACIS-S-4	7.21	1265	-0.029	0.003	0.005	0.009	0.000000	0.000000	2157.07	178.84
2	FID	ACIS-S-5	7.24	1265	0.012	-0.008	0.006	0.011	0.000000	0.000000	-1806.97	173.82
3	GUIDE	501876072	9.97	2531	0.173	-0.040	0.131	0.212	161.273533	58.620125	2138.37	-530.01
4	GUIDE	501876608	8.60	2530	0.047	0.009	0.083	0.131	161.204341	58.717464	2159.23	-903.22
5	GUIDE	501875064	9.12	2531	-0.027	0.048	0.077	0.124	163.017696	58.369846	-751.93	1262.93
6	GUIDE	501878640	8.41	2531	-0.138	0.003	0.064	0.101	163.346309	59.049577	-2002.42	-928.97
7	GUIDE	501877664	9.04	2530	-0.029	-0.011	0.174	0.240	163.740288	58.664193	-2345.46	601.76

2.4 Star Slots

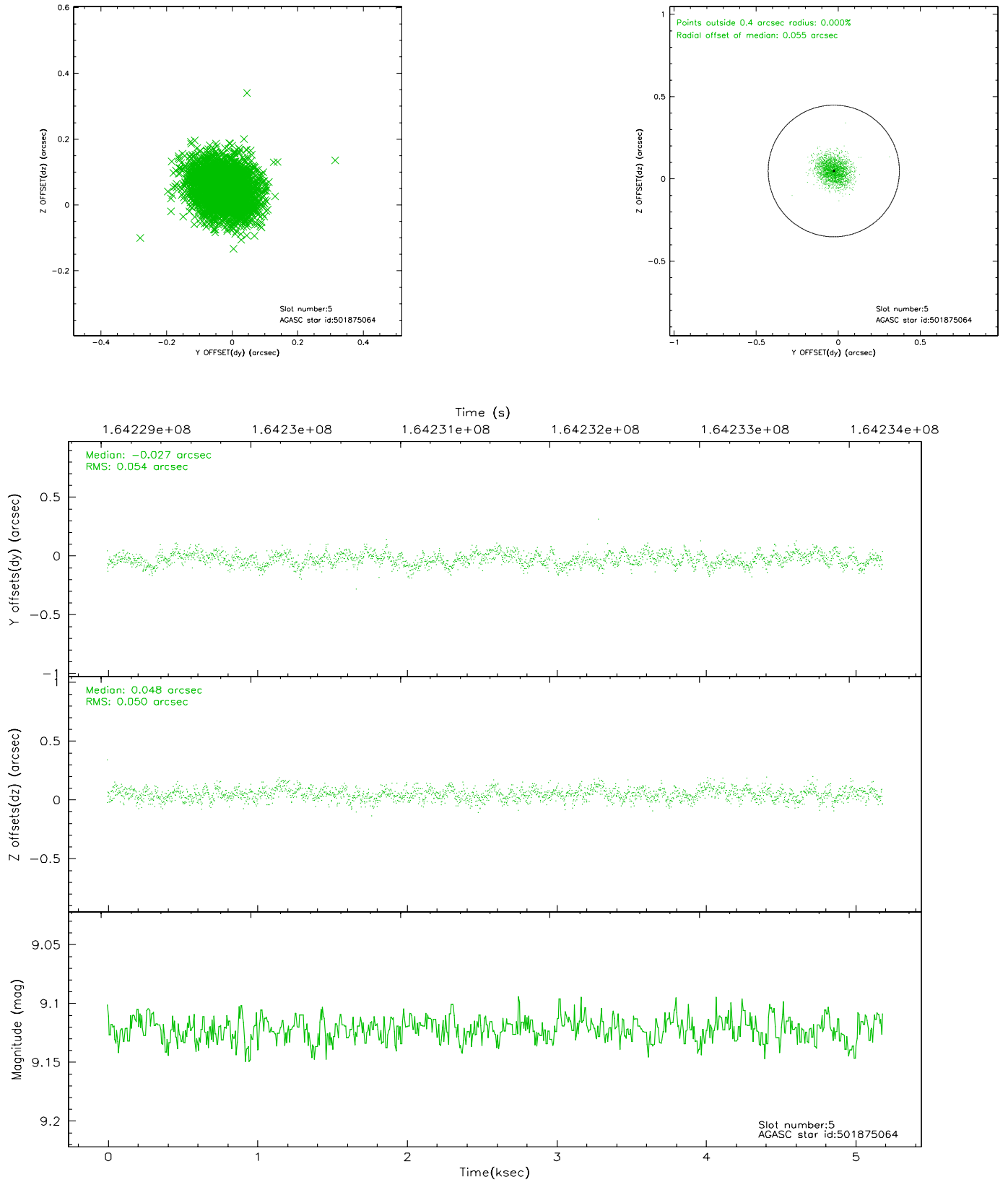
2.4.1 Slot 3



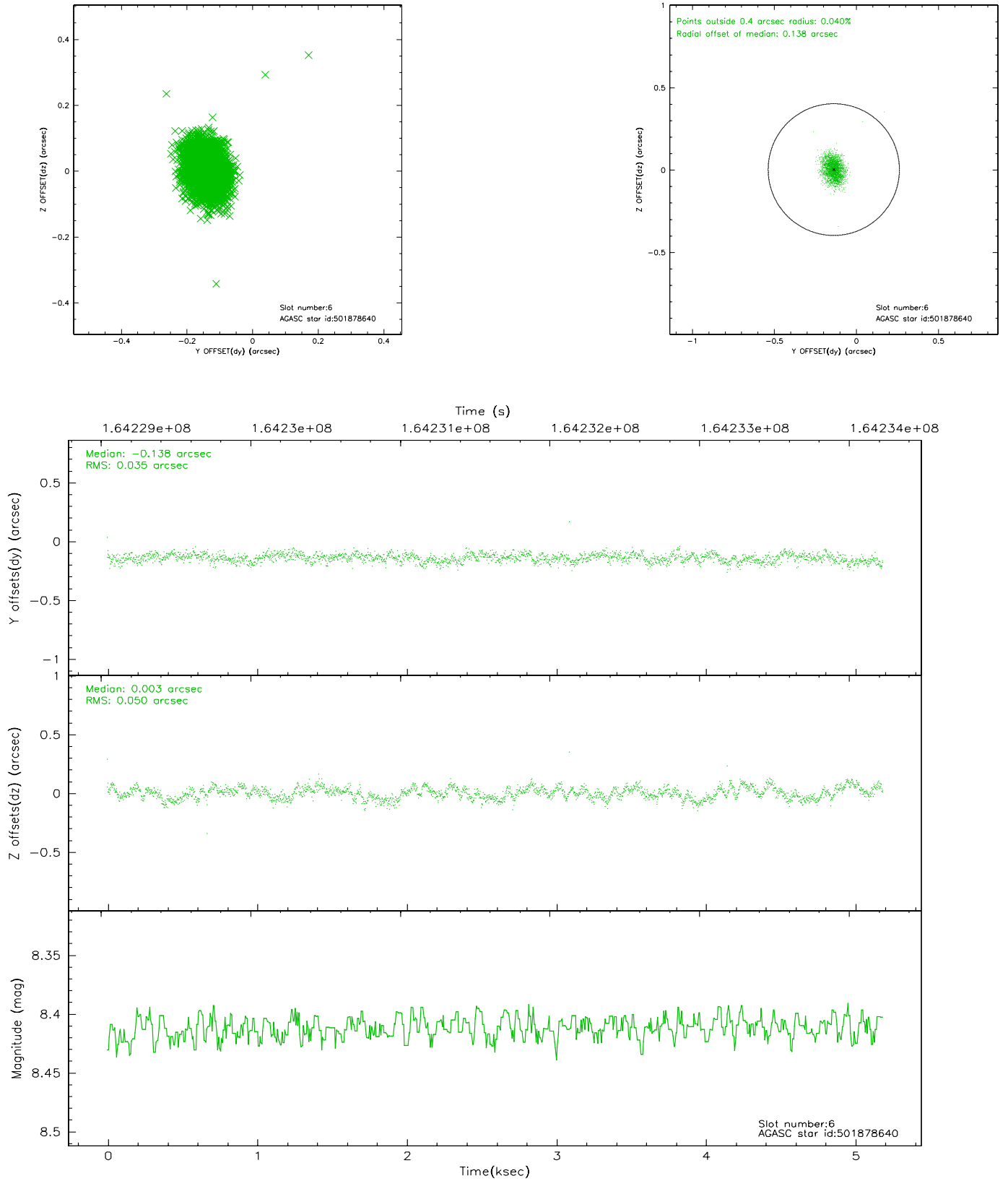
2.4.2 Slot 4



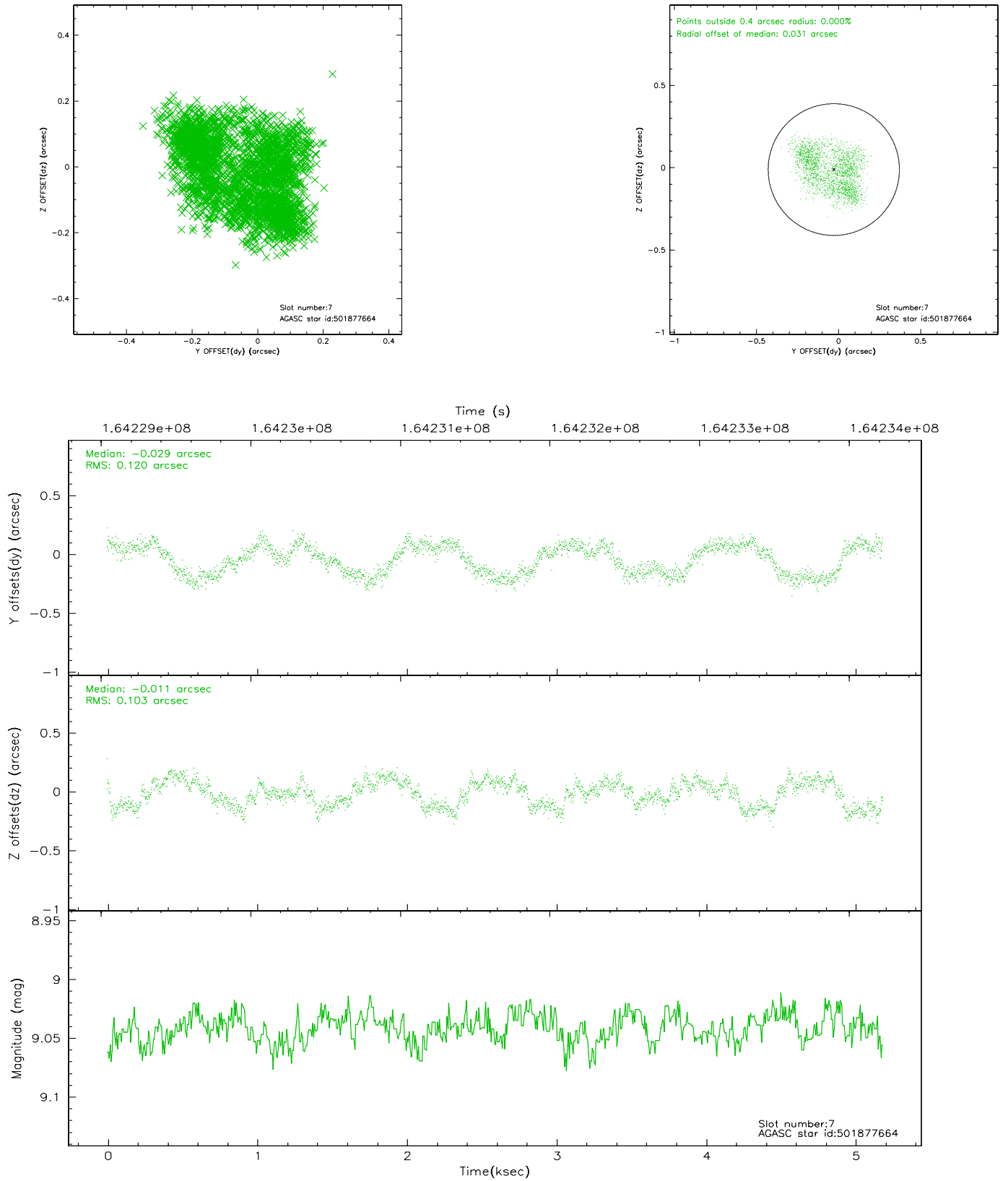
2.4.3 Slot 5



2.4.4 Slot 6

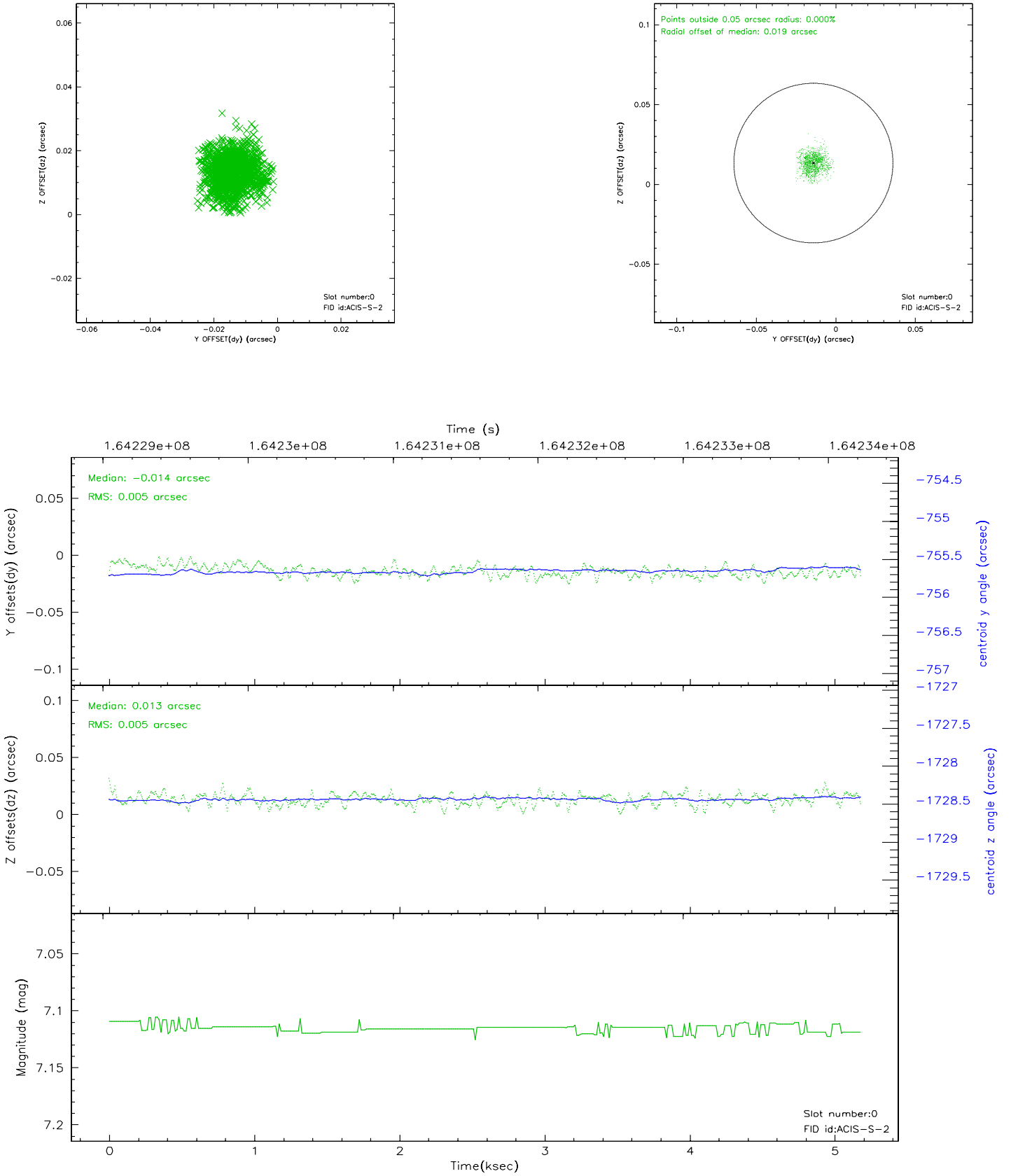


2.4.5 Slot 7

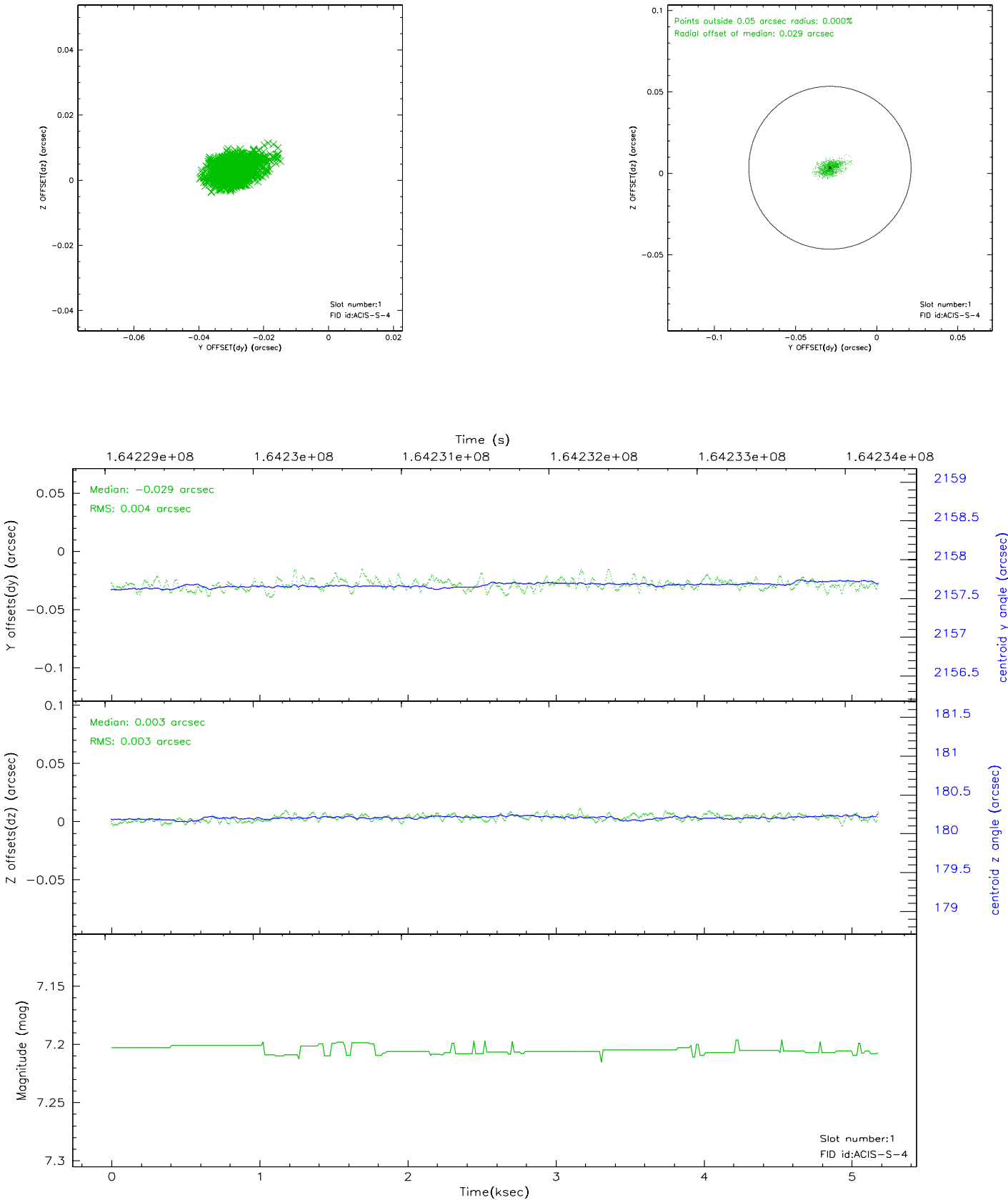


2.5 FID Slots

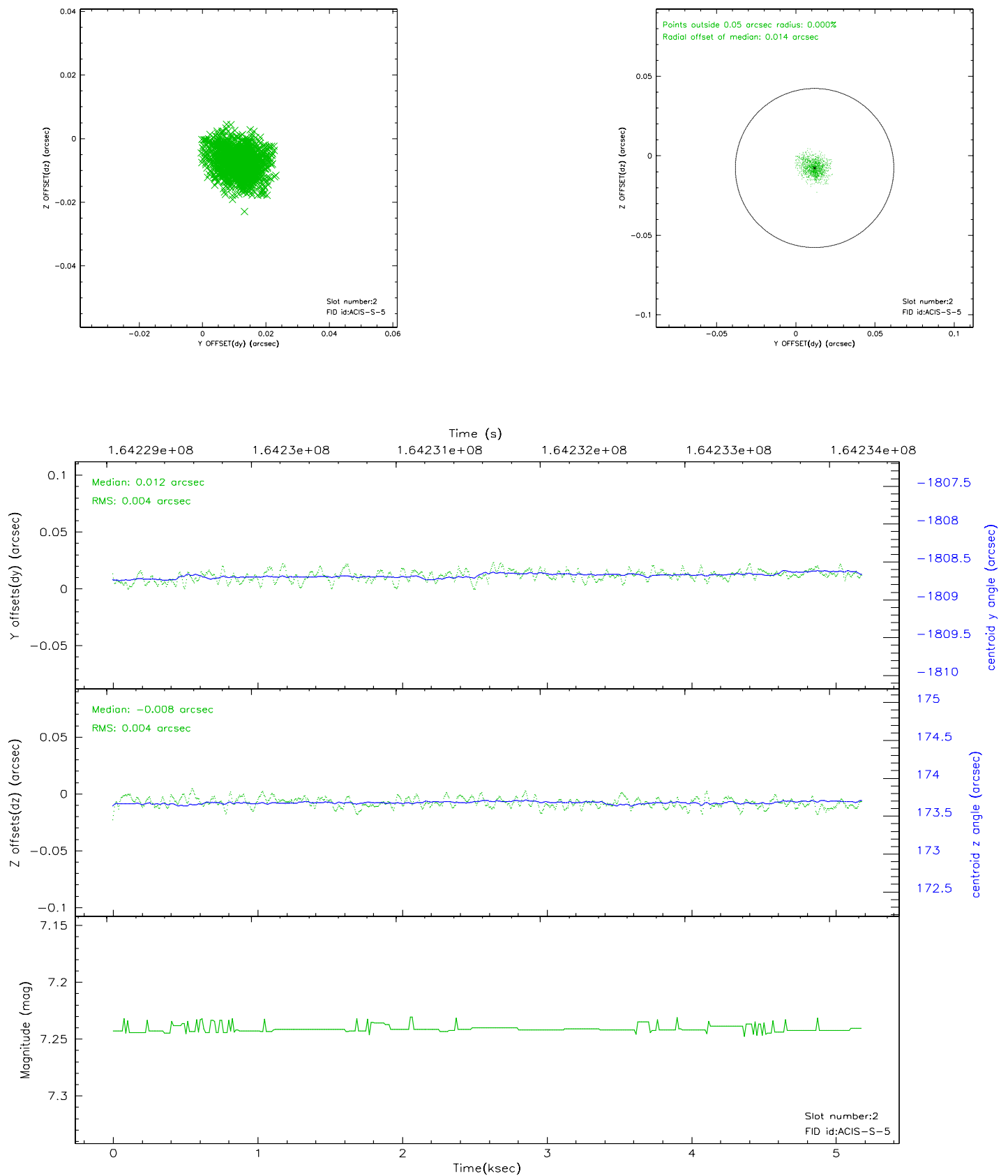
2.5.1 Slot 0



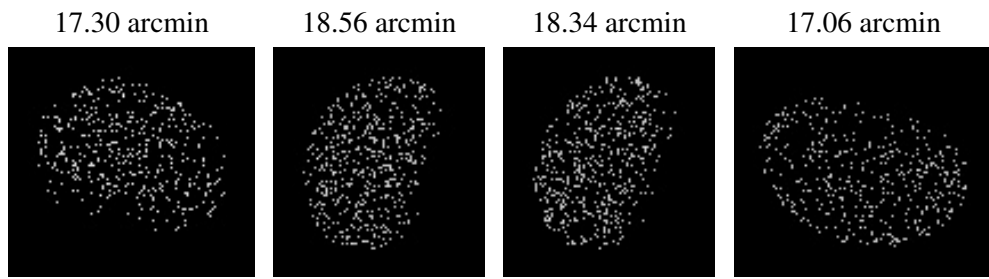
2.5.2 Slot 1



2.5.3 Slot 2



3 Point Sources



A Summary

A.1 Status

V&V Scientist	Jen Lauer
V&V Date (YYYY-MM-DD)	2006.07.24
V&V Edition	1
V&V Disposition and Status	OK
V&V Charge Time	4.755

A.2 Comments