

V&V Reference Report

L2 ASCDS Version : 8.4.5

Observation 3818 - L2 Version 4
Chandra X-Ray Center

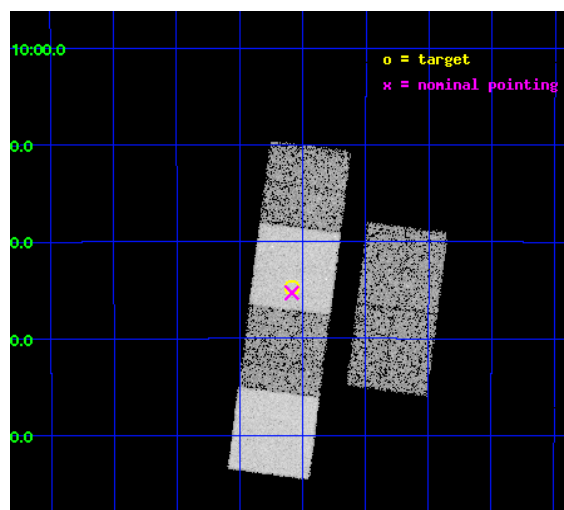
L2 Processing Date : Nov 2 2012

Contents

1	Front	2
2	OBI	3
2.1	OBI	3
2.1.1	Images	3
2.1.2	Bias	3
2.1.3	Parameters	4
2.1.4	Events	4
2.2	Compared Parameters	5
2.3	Aspect	6
2.4	Star Slots	9
2.4.1	Slot 3	9
2.4.2	Slot 4	10
2.4.3	Slot 5	11
2.4.4	Slot 6	12
2.4.5	Slot 7	13
2.5	FID Slots	14
2.5.1	Slot 0	14
2.5.2	Slot 1	15
2.5.3	Slot 2	16
A	Summary	17
A.1	Status	17
A.2	Comments	17

1 Front

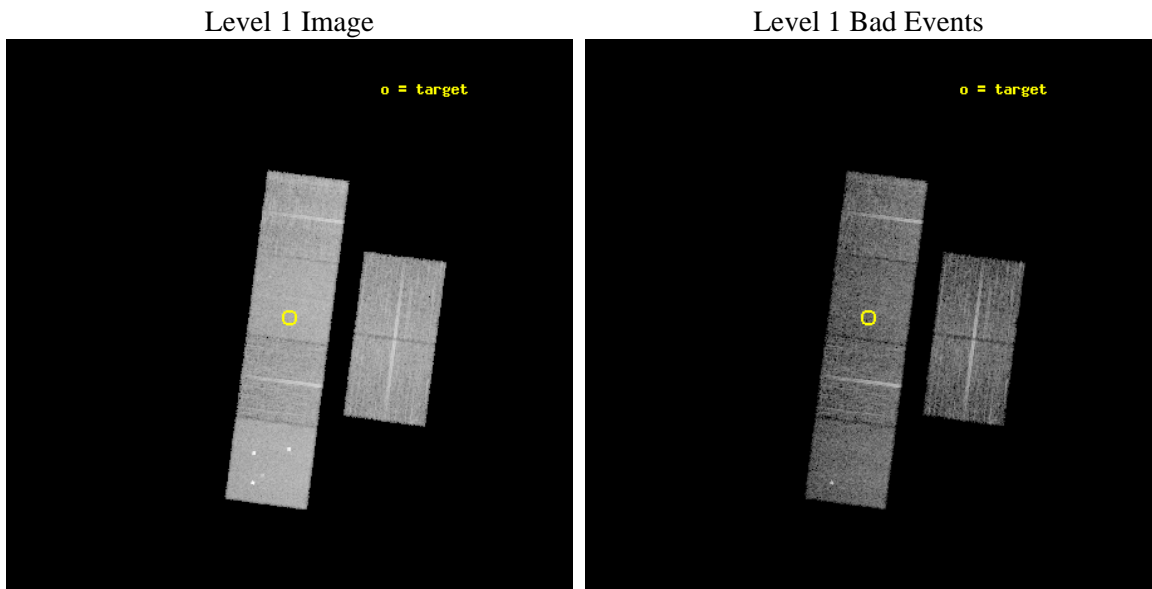
seq_num	400305	Sequence number
obs_id	3818	Observation id
title	A SEARCH FOR X-RAY EMISSION FROM OGLE-1999-BUL-32: THE MISSING LINK BETWEEN STELLAR MASS AND SUPERMASSIVE BLACK HOLES	Proposal title
observer	DR W. THOMAS VESTRAND	Principal investigator
object	OGLE-1999-BUL-32	Source name
dtcycle	0	
cycle	P	events from which exps? Prim/Second/Both
ra_targ	271.272083	Observer's specified target RA [deg]
dec_targ	-28.578472	Observer's specified target Dec [deg]
ra_nom	271.27156363318	Nominal RA [deg]
dec_nom	-28.588177775324	Nominal Dec [deg]
roll_nom	277.42953693678	Nominal Roll [deg]
revision	4	Processing version of data
ontime	9843.1999633312	Sum of GTIs [s]
livetime	9718.5594385321	Livetime [s]
ontime2	9839.9589830935	Sum of GTIs [s]
ontime3	9843.1999633312	Sum of GTIs [s]
ontime5	9843.1999633312	Sum of GTIs [s]
ontime6	9843.1999633312	Sum of GTIs [s]
ontime7	9843.1999633312	Sum of GTIs [s]
ontime8	9843.1999633312	Sum of GTIs [s]
l2events	104675	Number of level 2 events



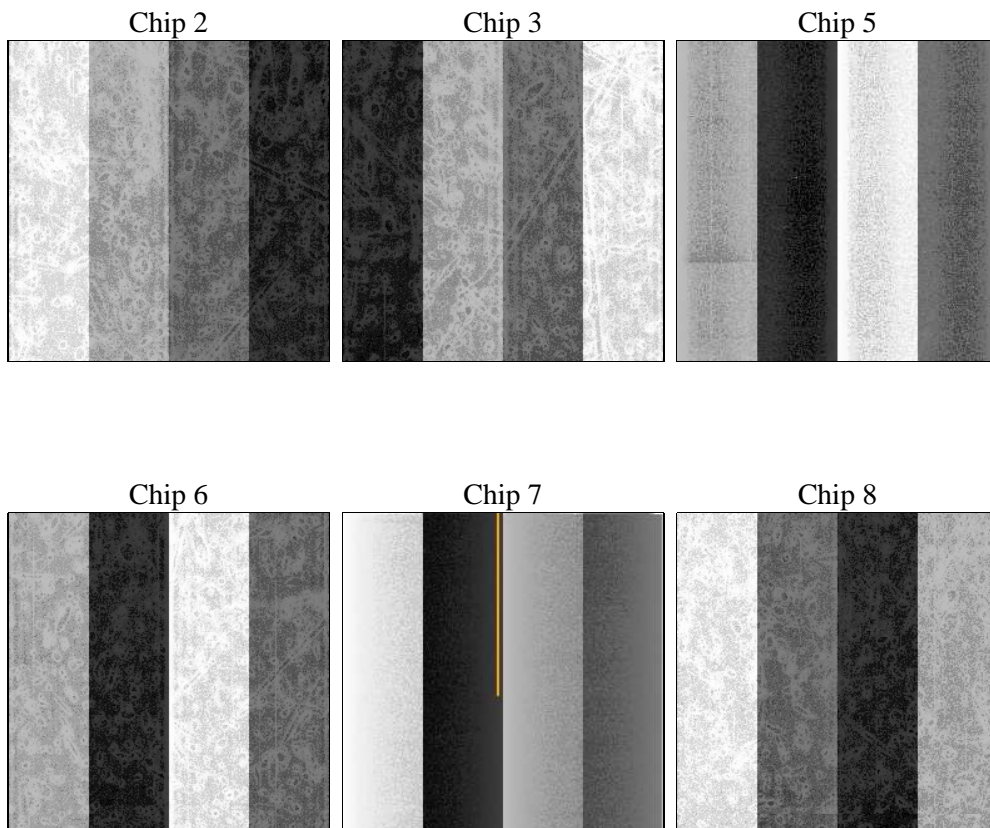
2 OBI

2.1 OBI

2.1.1 Images



2.1.2 Bias



2.1.3 Parameters

obi_num	0	Obi number	sched_exp_time	9884.000000	[s] Scheduled observation exposure time
ascdsver	8.4.5	Processing system revision	ontime	9843.1999633312	Sum of GTIs [s]
caldsver	4.5.2	 	ontime2	9839.9589830935	Sum of GTIs [s]
date	2012-11-01T20:05:26	Date and time of file creation	ontime3	9843.1999633312	Sum of GTIs [s]
revision	4	Processing version of data	ontime5	9843.1999633312	Sum of GTIs [s]
			ontime6	9843.1999633312	Sum of GTIs [s]
			ontime7	9843.1999633312	Sum of GTIs [s]
			ontime8	9843.1999633312	Sum of GTIs [s]
			l1events	440542	Number of level 1 events

2.1.4 Events

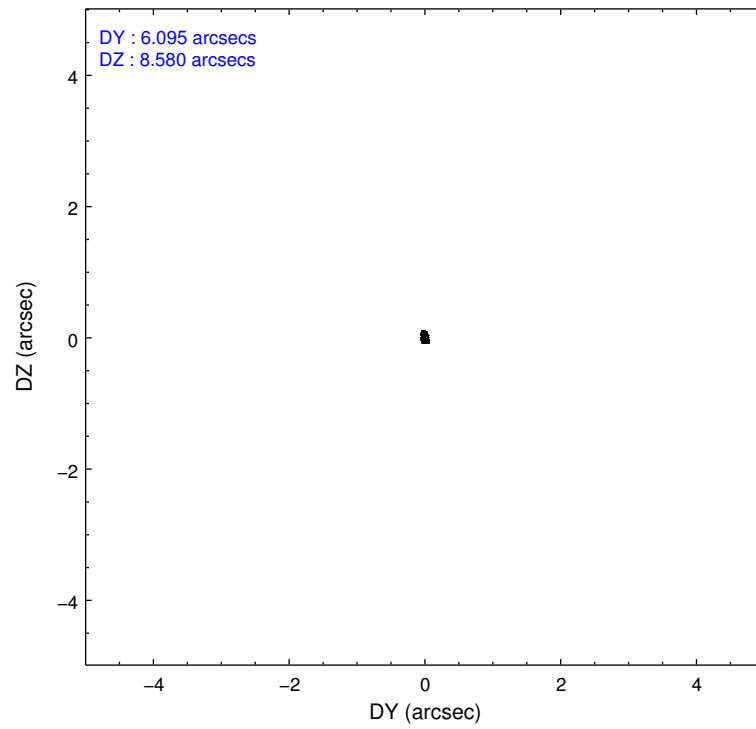
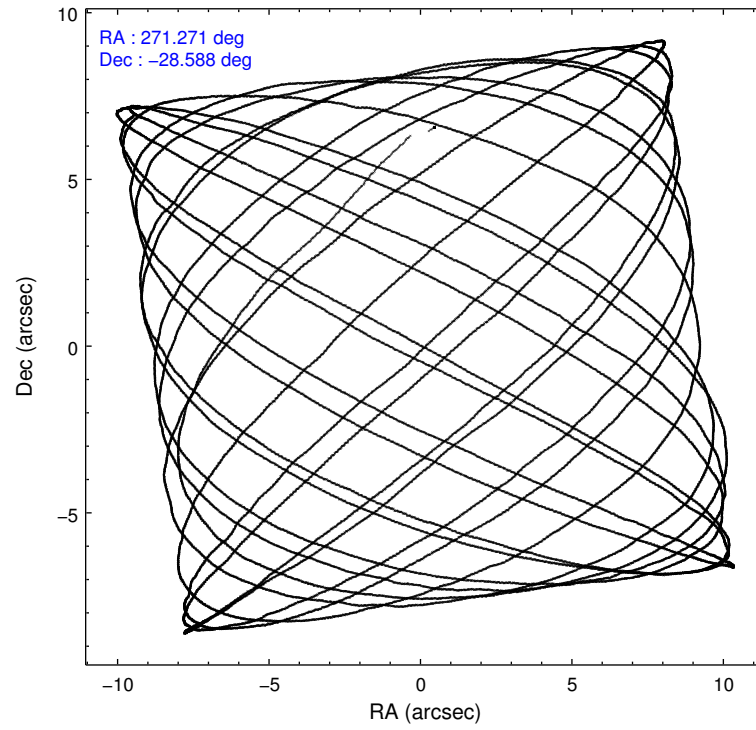
	ccd 2	ccd 3	ccd 5	ccd 6	ccd 7	ccd 8		ccd 2	ccd 3	ccd 5	ccd 6	ccd 7	ccd 8
level 1 events	61924	60506	94334	62295	83266	78217	grade 0 events	4285	4223	7611	4328	3960	5881
rejected events	53570	52327	49097	53461	47538	61163		6%	6%	8%	6%	4%	7%
rejected %	86%	86%	52%	85%	57%	78%	grade 1 events	38	45	96	25	74	42
								0%	0%	0%	0%	0%	0%
							grade 2 events	1452	1371	12748	1551	7170	3567
								2%	2%	13%	2%	8%	4%
							grade 3 events	696	673	1812	755	3296	1682
								1%	1%	1%	1%	3%	2%
							grade 4 events	737	713	1758	701	3218	1632
								1%	1%	1%	1%	3%	2%
							grade 5 events	2516	2616	6609	2718	7881	3606
								4%	4%	7%	4%	9%	4%
							grade 6 events	1187	1205	21316	1499	18090	4297
								1%	1%	22%	2%	21%	5%
							grade 7 events	51013	49660	42384	50718	39577	57510
								82%	82%	44%	81%	47%	73%

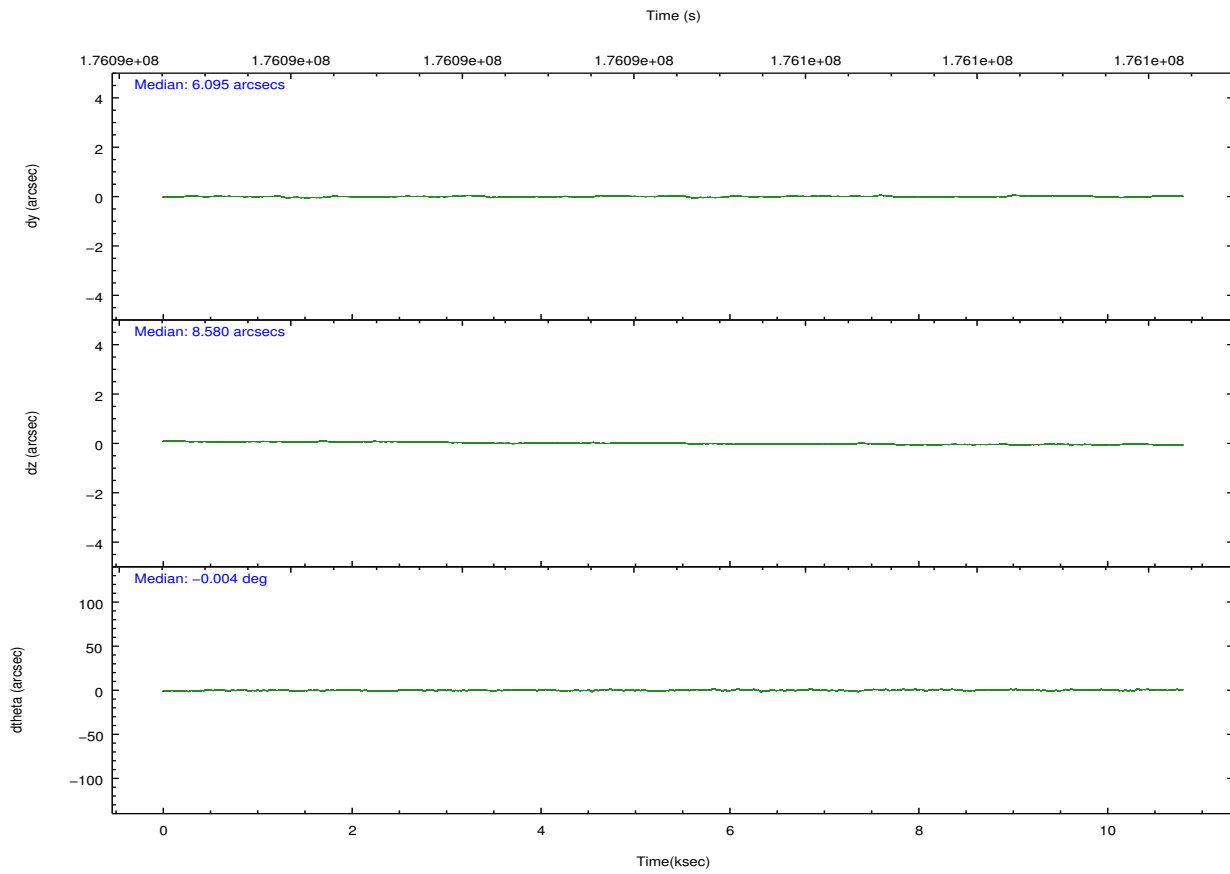
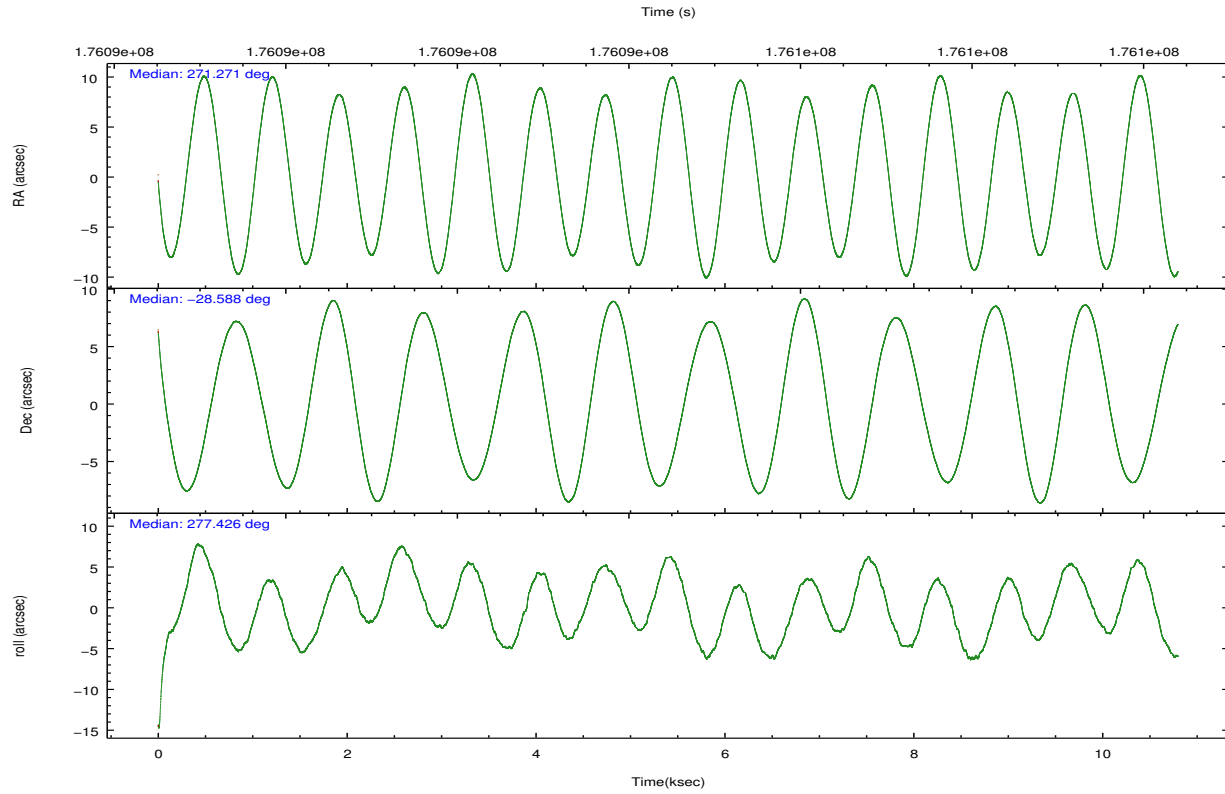
2.2 Compared Parameters

Parameter	Planned	Actual
Instrument	ACIS	ACIS
Detector	ACIS-235678	ACIS-235678
Grating	NONE	NONE
Data mode	VFAINT	VFAINT
Observation mode	POINTING	POINTING
[deg] Pointing RA	271.252395	271.2715636331829
[deg] Pointing Dec	-28.566735	-28.58817777532391
[deg] Pointing Roll	277.263746	277.4295369367817
[mm] SIM focus pos	-0.684267	-0.6828225247311905
[mm] SIM defocus	0	0.001444936568705701
[mm] SIM translation stage pos	-190.132523	-190.1400660498719
[mm] SIM translation stage offset	0	0.00754346686406393
[s] Observation start time (MET)	176089968.184000	176088642.86622
Observation start date	2003-08-01T01:51:44	2003-08-01T01:30:42
[s] Observation end time (MET)	176099852.184000	176100316.07922
Observation end date	2003-08-01T04:36:28	2003-08-01T04:45:16
Read mode	TIMED	TIMED

Parameter	Planned	Actual
Obspar format version number	7	7
Obspar file type	PREDICTED	ACTUAL
Obspar update status	NONE	UPDATED
Number of optional ACIS chips dropped	0	0
On-chip summing requested	N	N
Subarray requested	NONE	NONE
Alternating exposures requested	N	N
[s] Primary exposure time	0.000000	3.2

2.3 Aspect



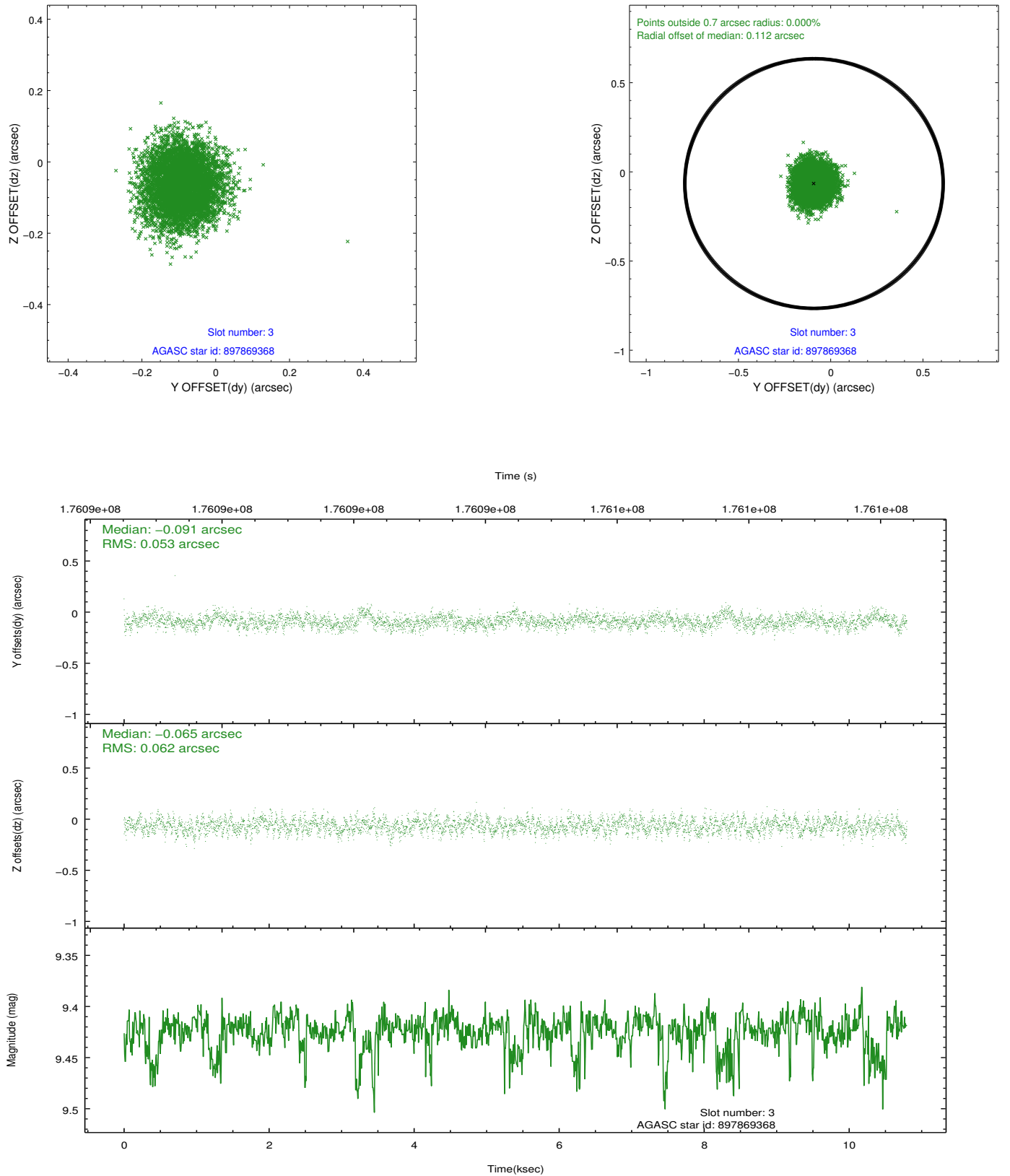


Slot Statistics

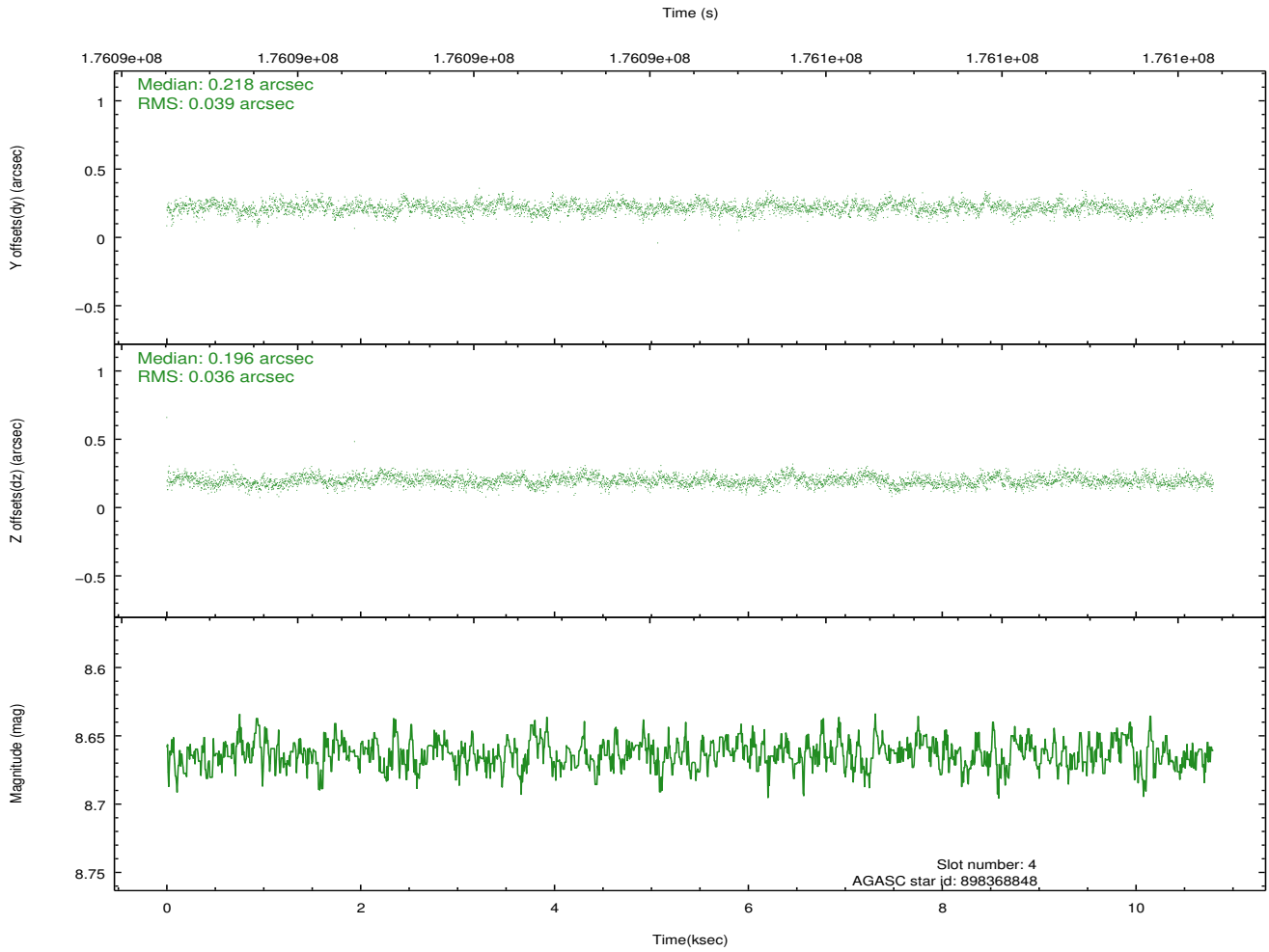
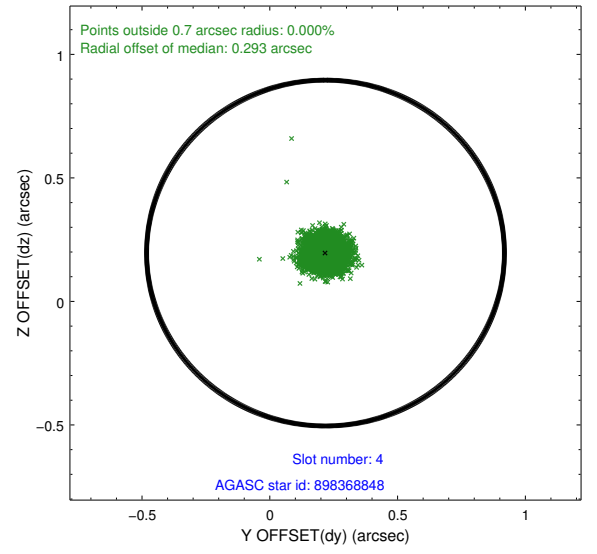
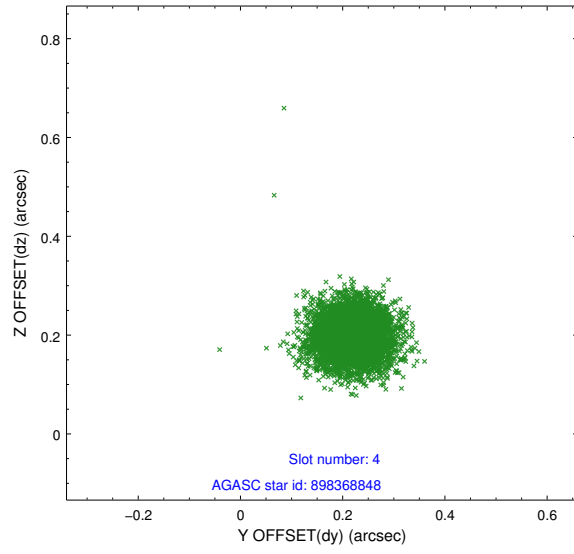
slot	status	id	mag	n_pts	med_dy	med_dz	dr1	dr2	ra	dec	mean_y	mean_z
0	FID	ACIS-S-1	7.18	2633	0.018	-0.027	0.008	0.013	0.000000	0.000000	937.18	-1725.47
1	FID	ACIS-S-4	7.20	2633	0.030	0.014	0.007	0.012	0.000000	0.000000	2154.91	178.21
2	FID	ACIS-S-5	7.22	2633	-0.075	0.025	0.007	0.013	0.000000	0.000000	-1811.12	172.44
3	GUIDE	897869368	9.42	5265	-0.091	-0.065	0.087	0.138	270.451371	-28.086928	-2026.55	-2306.32
4	GUIDE	898368848	8.66	5267	0.218	0.196	0.057	0.092	271.700599	-29.036638	1859.09	1185.36
5	GUIDE	898371304	8.41	5267	-0.004	-0.072	0.078	0.126	270.531151	-28.390506	-910.68	-2186.13
6	GUIDE	897867000	9.60	5262	-0.191	-0.099	0.100	0.159	270.535158	-28.004749	-2288.53	-2006.94
7	GUIDE	898397904	9.01	5263	0.066	0.038	0.074	0.122	271.468366	-29.222006	2426.28	374.85

2.4 Star Slots

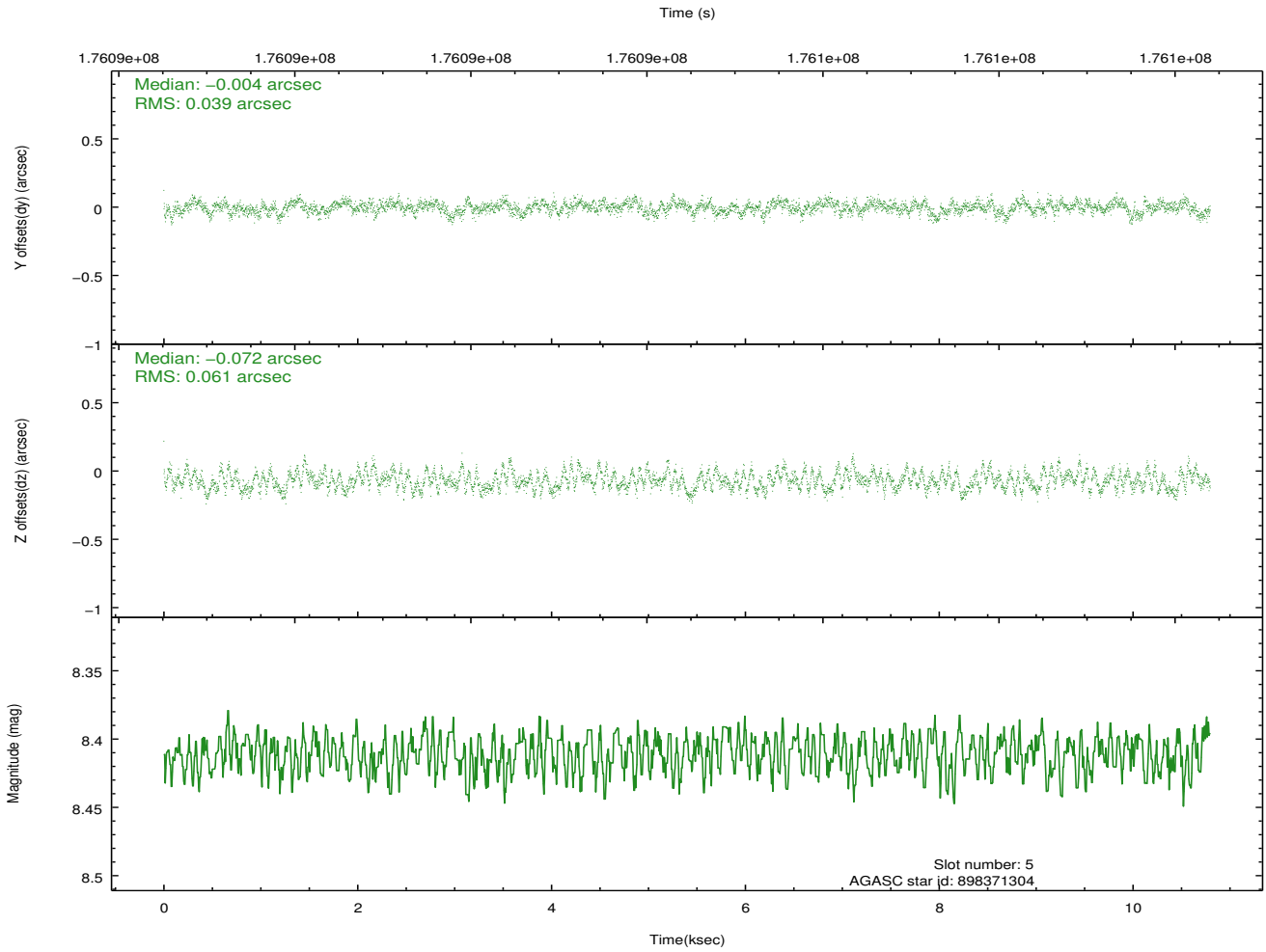
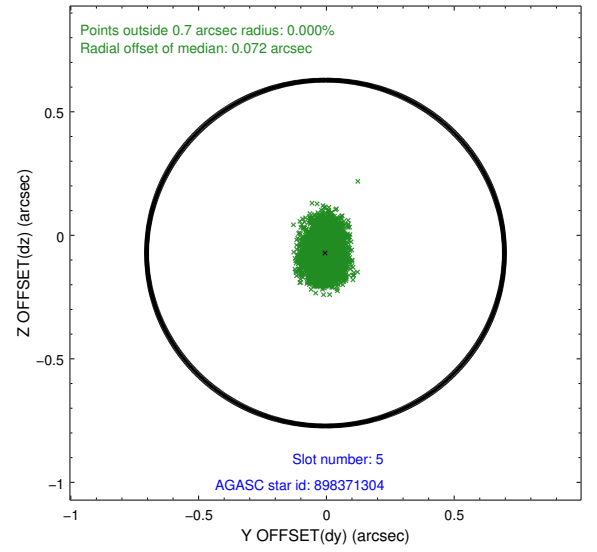
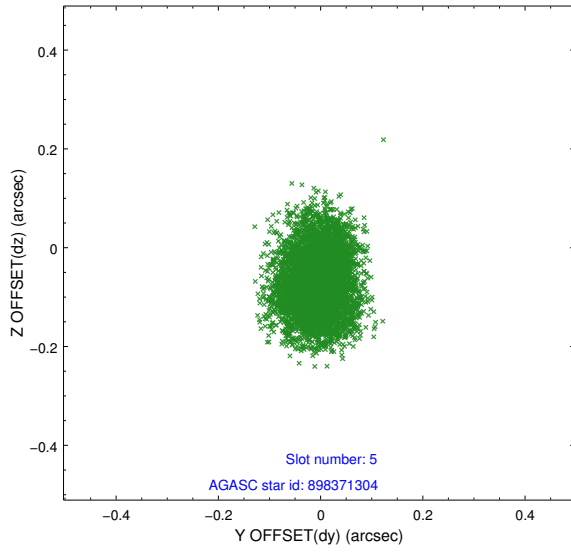
2.4.1 Slot 3



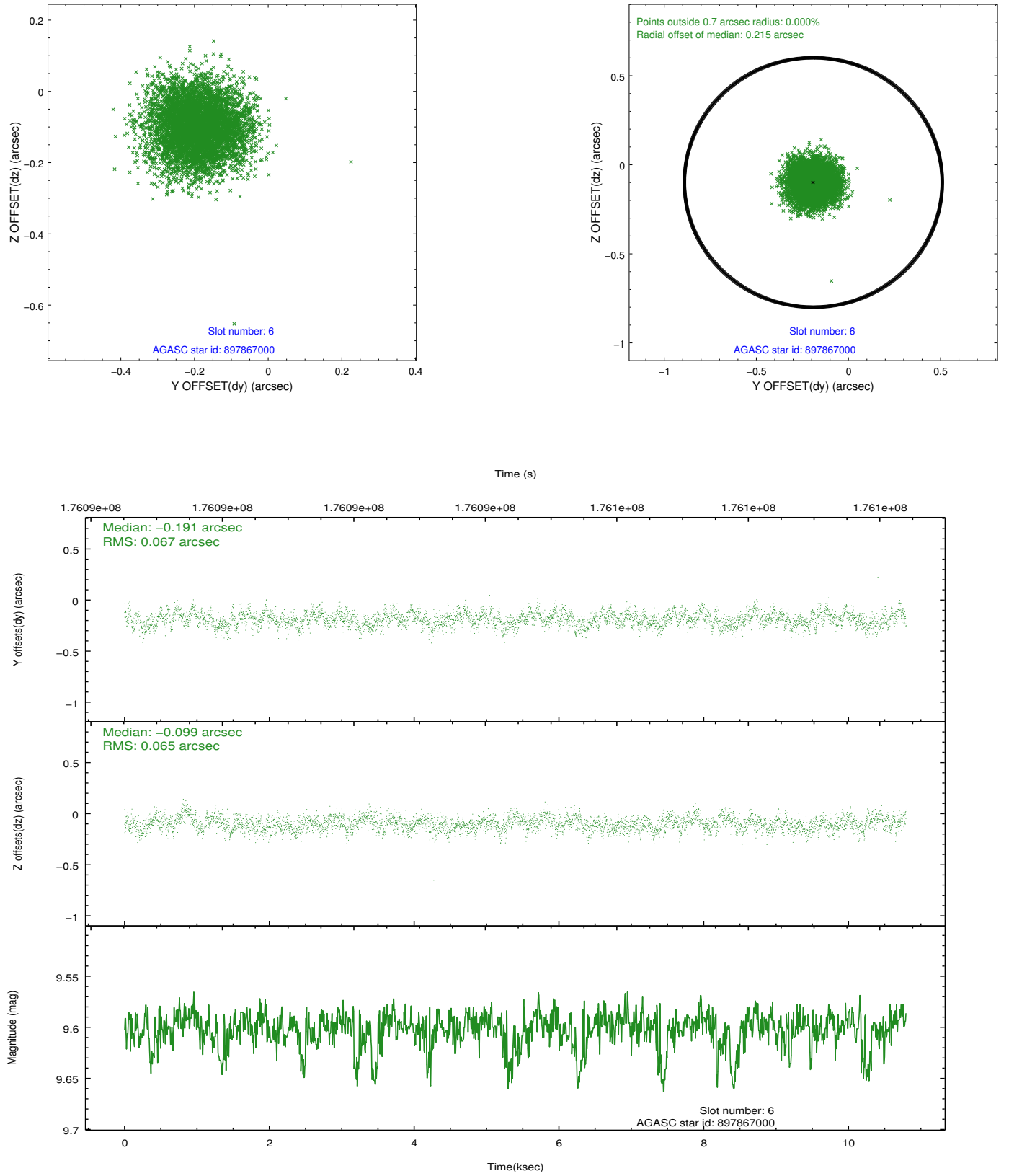
2.4.2 Slot 4



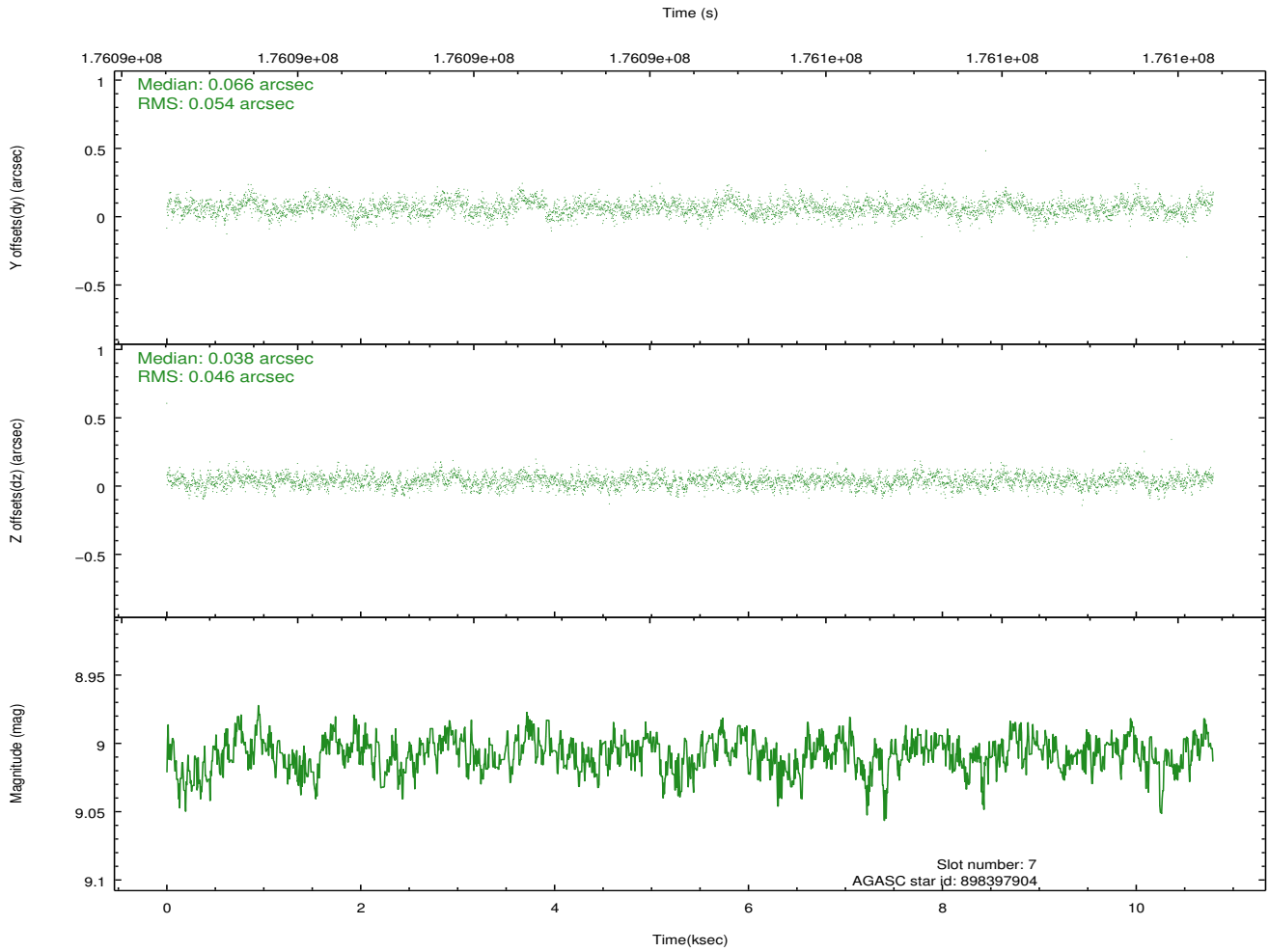
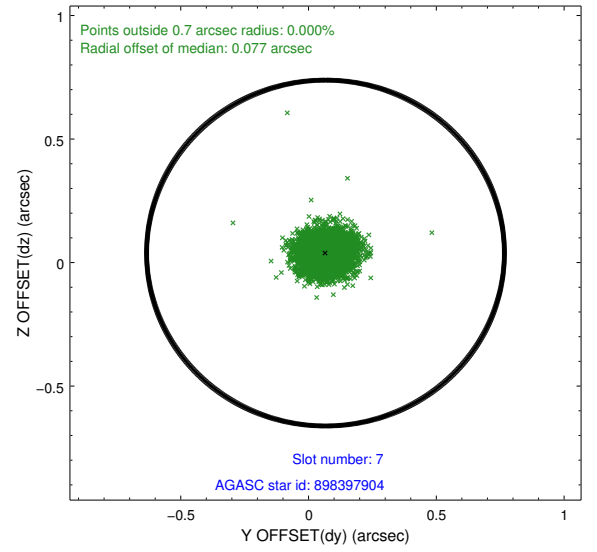
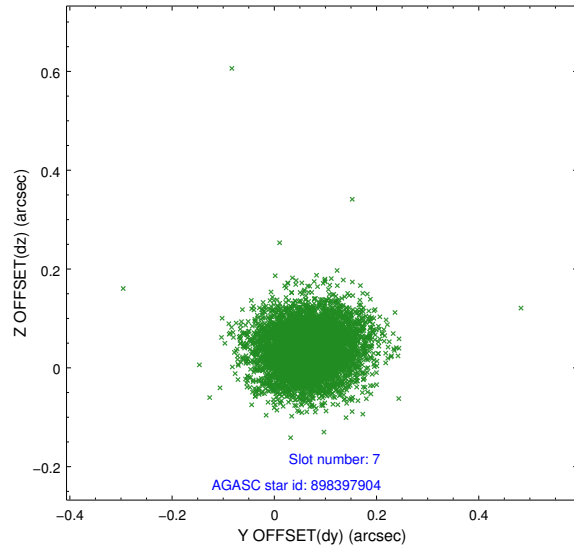
2.4.3 Slot 5



2.4.4 Slot 6

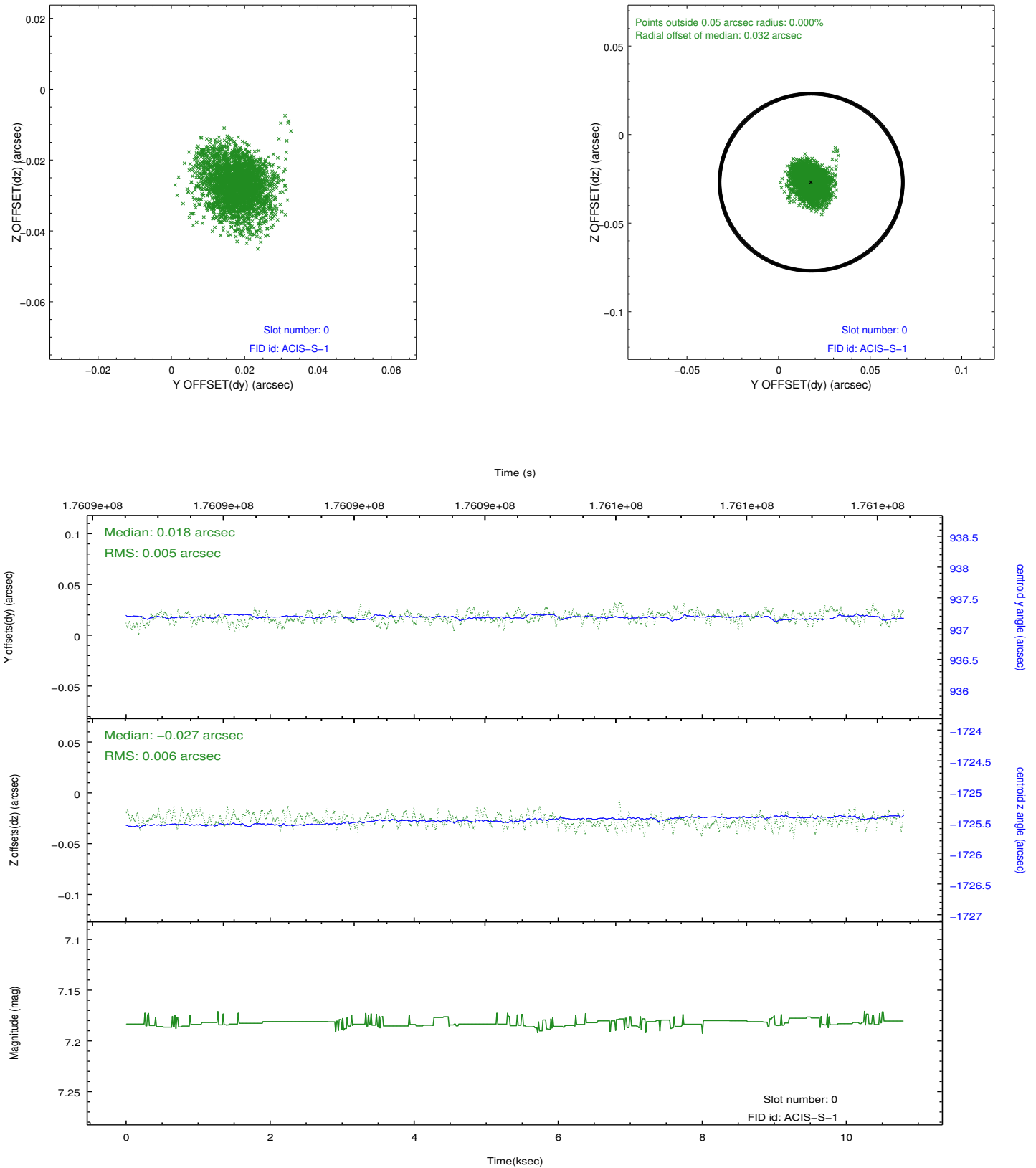


2.4.5 Slot 7

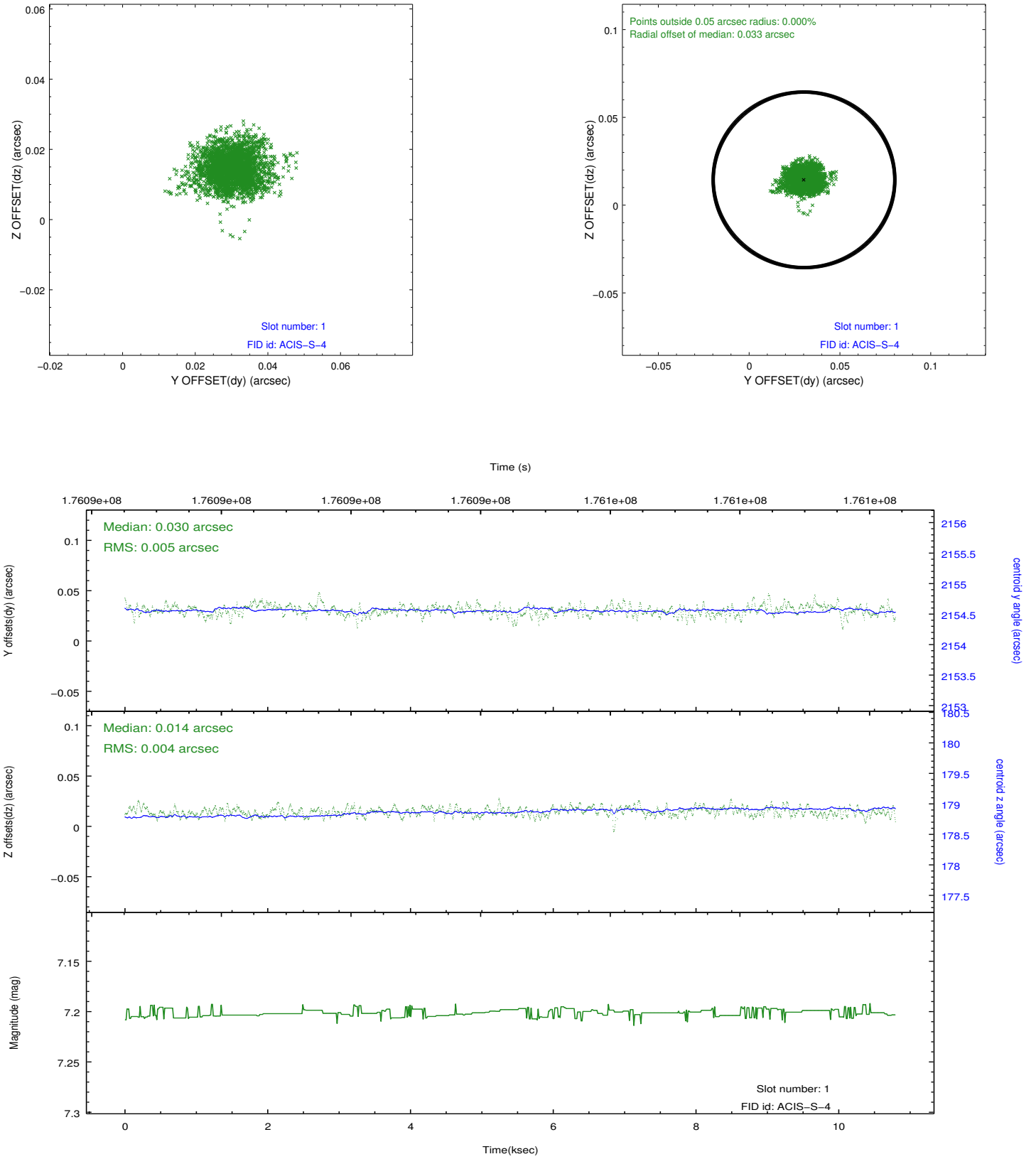


2.5 FID Slots

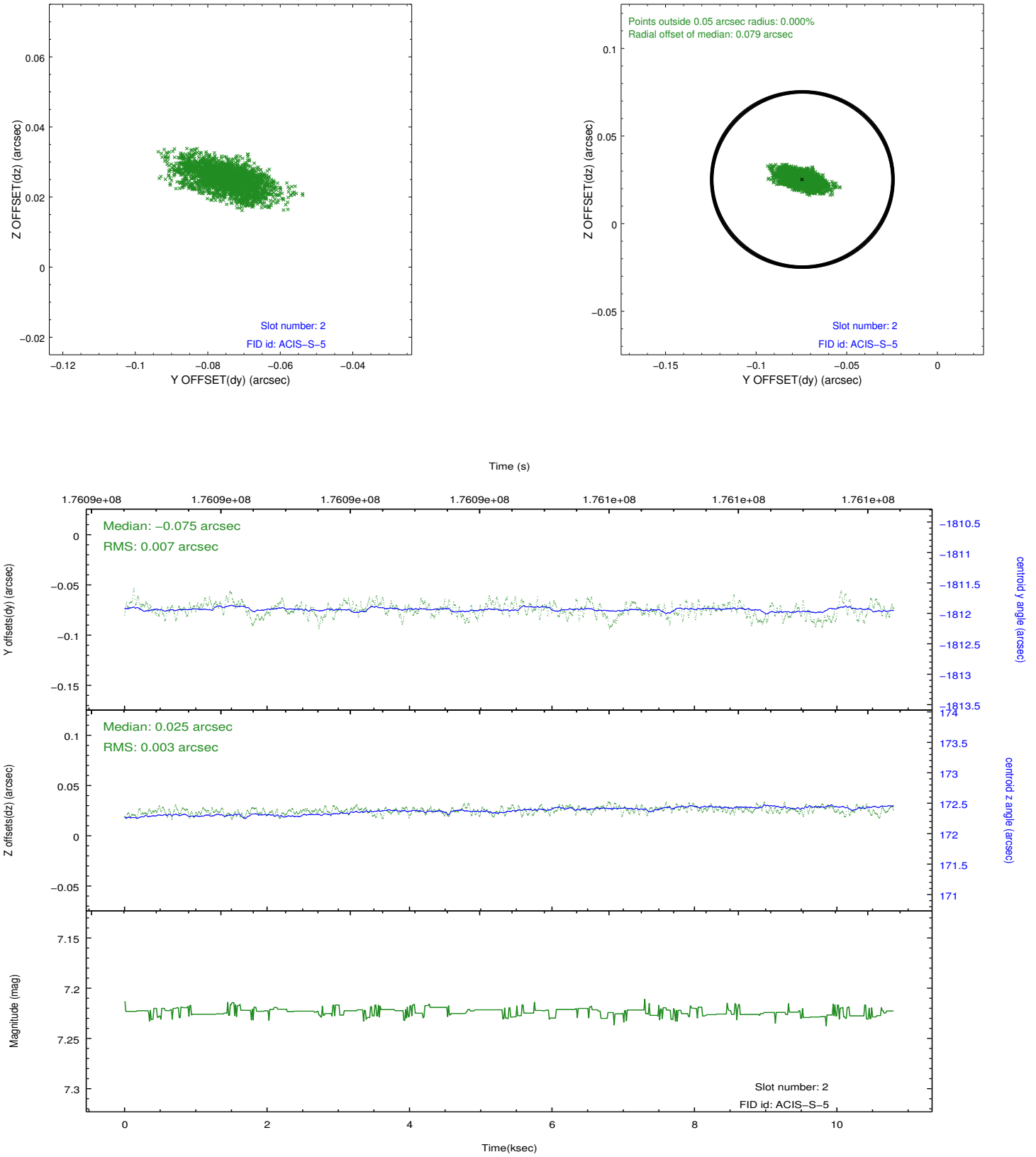
2.5.1 Slot 0



2.5.2 Slot 1



2.5.3 Slot 2



A Summary

A.1 Status

V&V Scientist	Jen Lauer
V&V Date (YYYY-MM-DD)	2012.11.27
V&V Edition	1
V&V Disposition and Status	OK
V&V Charge Time	9.846

A.2 Comments

The bias map for CCD 8 was incomplete because of data gaps in telemetry. The bias map was reconstructed using scaled data from a comparable bias map for another observation to fill the data gaps. The replacement bias does not affect the chip with the target. The data impacted is bounded by the chip coordinates:

(271.32388,-28.46724),(271.30321,-28.32881),(271.30029,-28.32915),(271.32095,-28.46758)