

V&V Reference Report

L2 ASCDS Version : 7.6.8

Observation 3818 - L2 Version 001
Chandra X-Ray Center

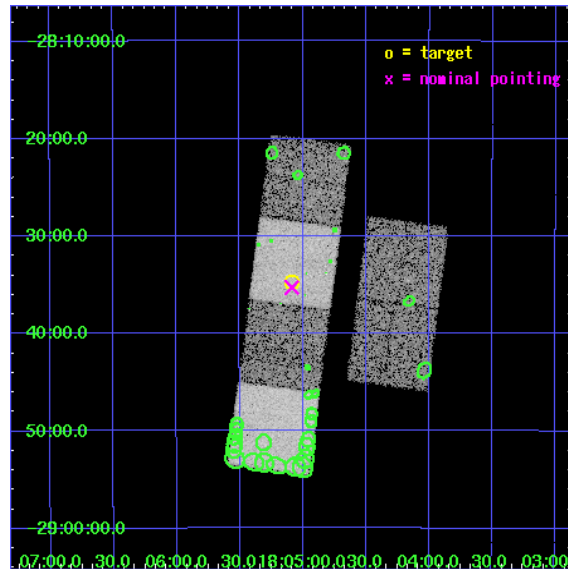
L2 Processing Date : Jul 18 2006

Contents

1	Front	2
2	OBI	3
2.1	OBI	3
2.1.1	Images	3
2.1.2	Bias	3
2.1.3	Parameters	4
2.1.4	Events	4
2.2	Compared Parameters	5
2.3	Aspect	6
2.4	Star Slots	9
2.4.1	Slot 3	9
2.4.2	Slot 4	10
2.4.3	Slot 5	11
2.4.4	Slot 6	12
2.4.5	Slot 7	13
2.5	FID Slots	14
2.5.1	Slot 0	14
2.5.2	Slot 1	15
2.5.3	Slot 2	16
3	Point Sources	17
A	Summary	18
A.1	Status	18
A.2	Comments	18

1 Front

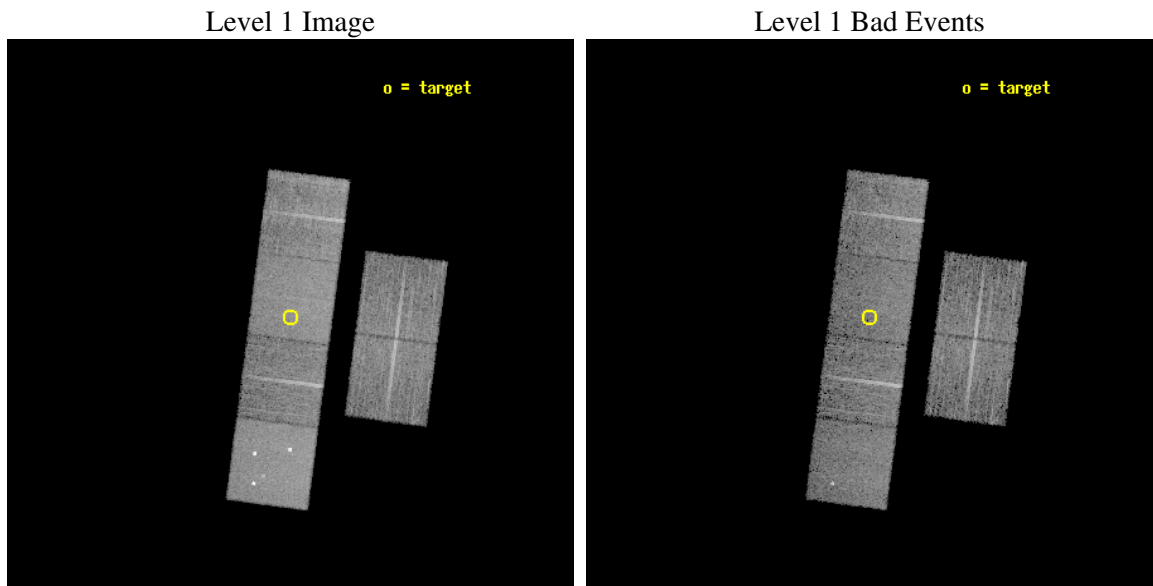
seq_num	400305
obs_id	3818
title	A SEARCH FOR X-RAY EMISSION FROM OGLE-1999-BUL-32: THE MISSING LINK BETWEEN STELLAR MASS AND SUPERMASSIVE BLACK HOLES
observer	DR W. THOMAS VESTRAND
object	OGLE-1999-BUL-32
dtcycle	0
cycle	P
ra_targ	271.272083
dec_targ	-28.578472
ra_nom	271.27155962774
dec_nom	-28.588150225742
roll_nom	277.42953501398
revision	3
ontime	9843.1999633312
livetime	9718.5594385321
ontime2	9839.9589830935
ontime3	9843.1999633312
ontime5	9843.1999633312
ontime6	9843.1999633312
ontime7	9843.1999633312
ontime8	9843.1999633312
l2events	100886



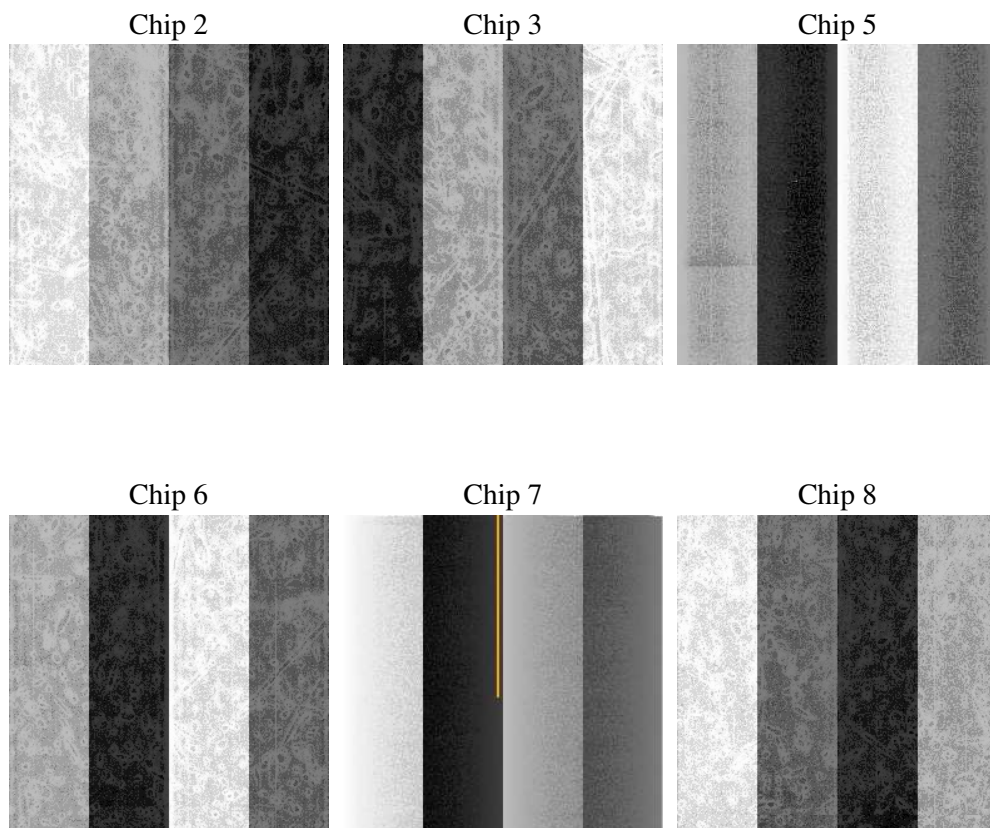
2 OBI

2.1 OBI

2.1.1 Images



2.1.2 Bias



2.1.3 Parameters

obi_num	0
ascdsver	7.6.8
caldbver	3.2.2
date	2006-07-18T15:36:15
revision	3

sched_exp_time	9884.000000
ontime	9849.426720351
ontime2	9846.1857301891
ontime3	9849.4267104268
ontime5	9849.426720351
ontime6	9849.4267104268
ontime7	9849.426720351
ontime8	9849.426720351
l1events	440542

2.1.4 Events

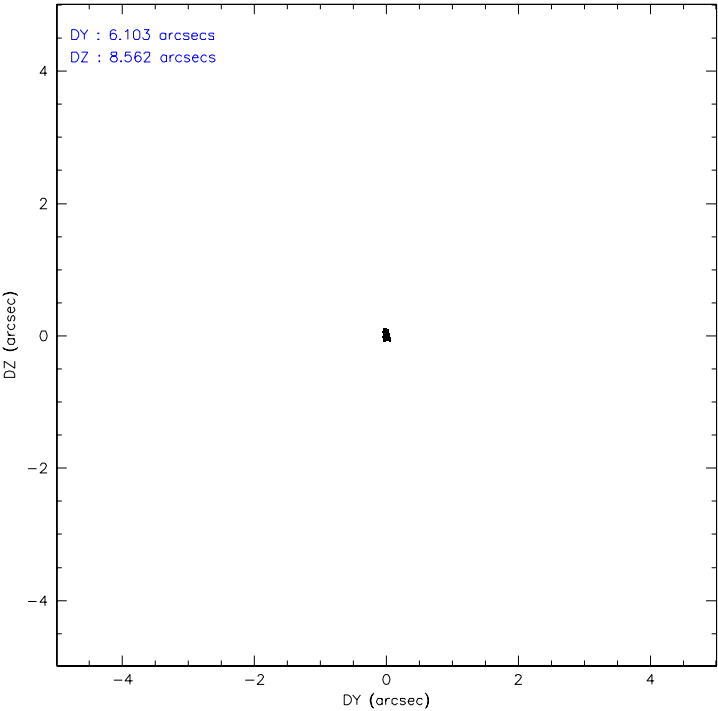
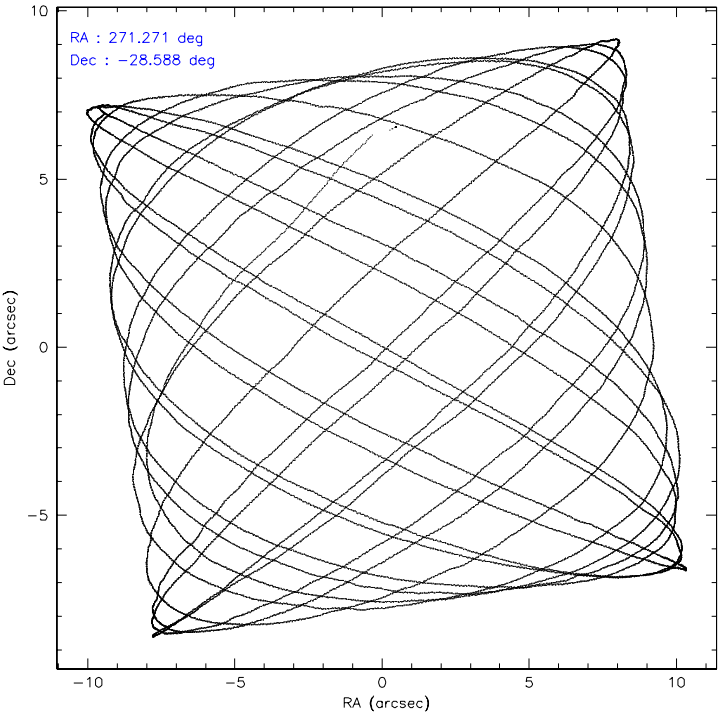
	ccd 2	ccd 3	ccd 5	ccd 6	ccd 7	ccd 8
level 1 events	61924	60506	94334	62295	83266	78217
rejected events	53572	52326	50426	53462	50135	61162
rejected %	86%	86%	53%	85%	60%	78%

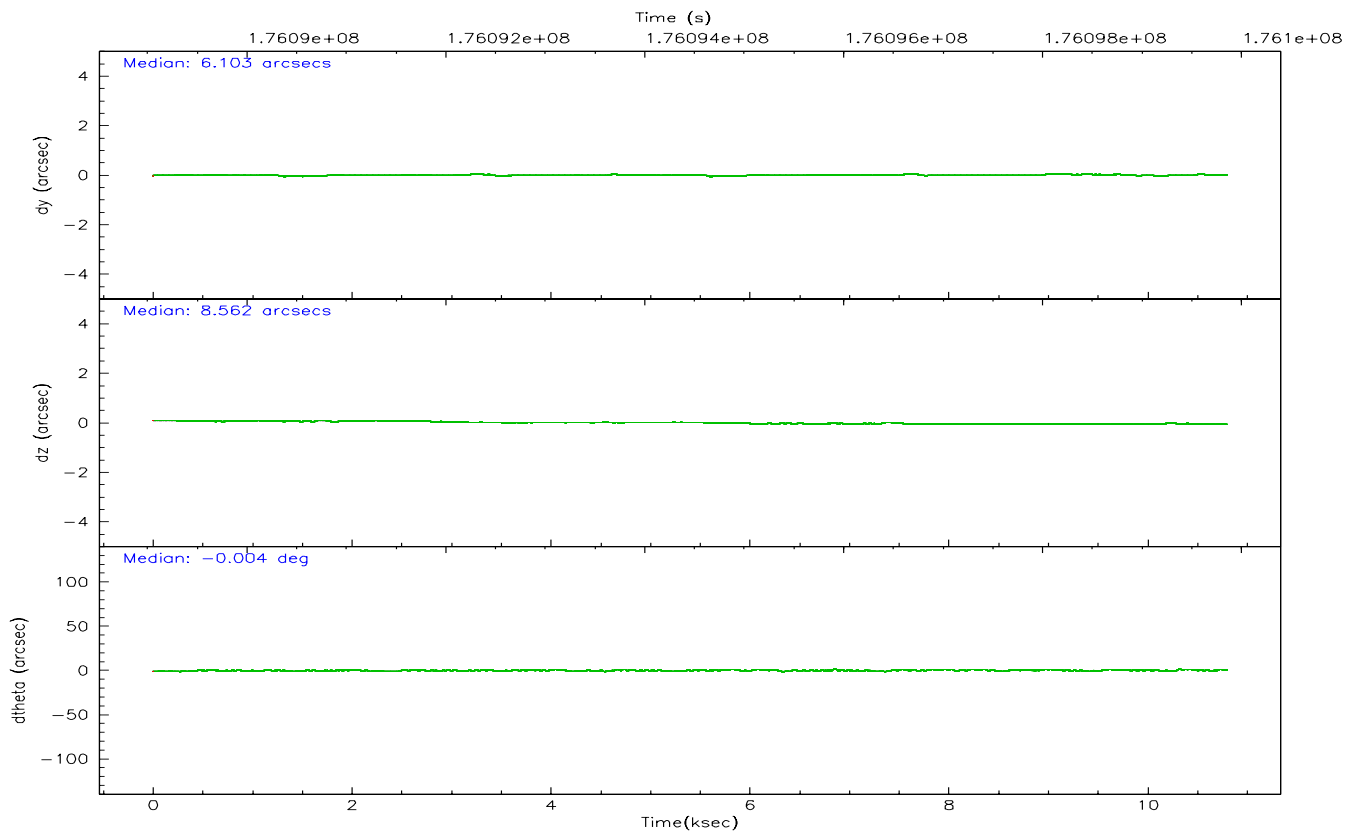
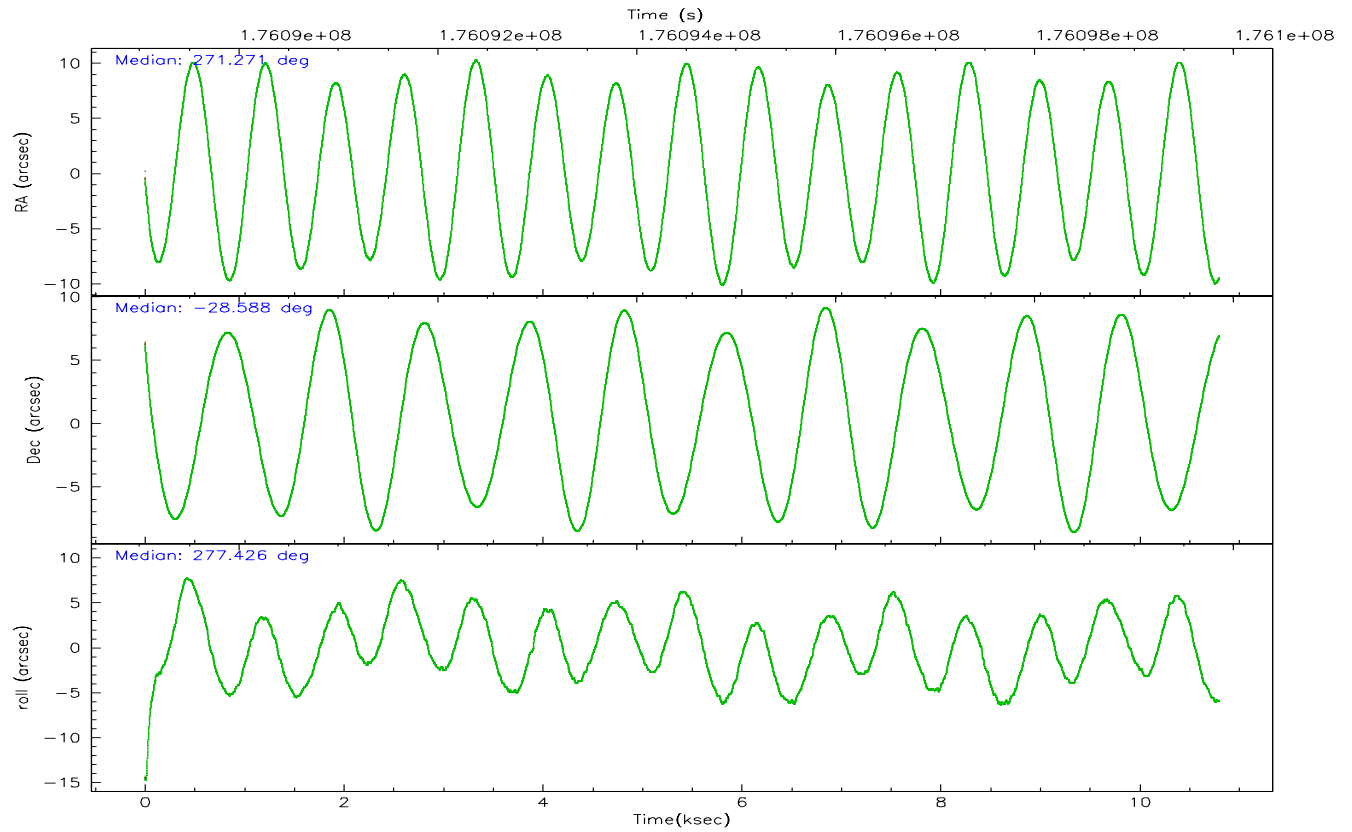
	ccd 2	ccd 3	ccd 5	ccd 6	ccd 7	ccd 8
grade 0 events	4285	4223	6472	4328	2691	5880
	6%	6%	6%	6%	3%	7%
grade 1 events	38	45	62	25	43	42
	0%	0%	0%	0%	0%	0%
grade 2 events	1452	1371	13031	1551	8174	3567
	2%	2%	13%	2%	9%	4%
grade 3 events	696	673	1031	755	1879	1682
	1%	1%	1%	1%	2%	2%
grade 4 events	737	713	980	701	1836	1632
	1%	1%	1%	1%	2%	2%
grade 5 events	2516	2616	4332	2718	5544	3607
	4%	4%	4%	4%	6%	4%
grade 6 events	1187	1205	22414	1499	18569	4297
	1%	1%	23%	2%	22%	5%
grade 7 events	51013	49660	46012	50718	44530	57510
	82%	82%	48%	81%	53%	73%

2.2 Compared Parameters

Parameter	Planned	Actual	Parameter	Planned	Actual
Instrument	ACIS	ACIS	Obspar format version number	6	6
Detector	ACIS-235678	ACIS-235678	Obspar file type	PREDICTED	ACTUAL
Grating	NONE	NONE	Obspar update status	NONE	UPDATED
Data mode	VFAINT	VFAINT	On-chip summing requested	N	N
Observation mode	POINTING	POINTING	Subarray requested	NONE	NONE
Pointing RA	271.252395	271.2715596277363	Alternating exposures requested	N	N
Pointing Dec	-28.566735	-28.58815022574172	Primary exposure time	0.000000	3.2
Pointing Roll	277.263746	277.4295350139848			
SIM focus pos (mm)	-0.684267	-0.6828225247311905			
SIM defocus (mm)	0	0.001444936568705701			
SIM translation stage pos (mm)	-190.132523	-190.1400660498719			
SIM translation stage offset (mm)	0	0.00754346686406393			
Observation start time	176089968.184000	176088642.86622			
Observation start date	2003-08-01T01:51:44	2003-08-01T01:30:42			
Observation end time	176099852.184000	176100316.07922			
Observation end date	2003-08-01T04:36:28	2003-08-01T04:45:16			
Read mode	TIMED	TIMED			

2.3 Aspect



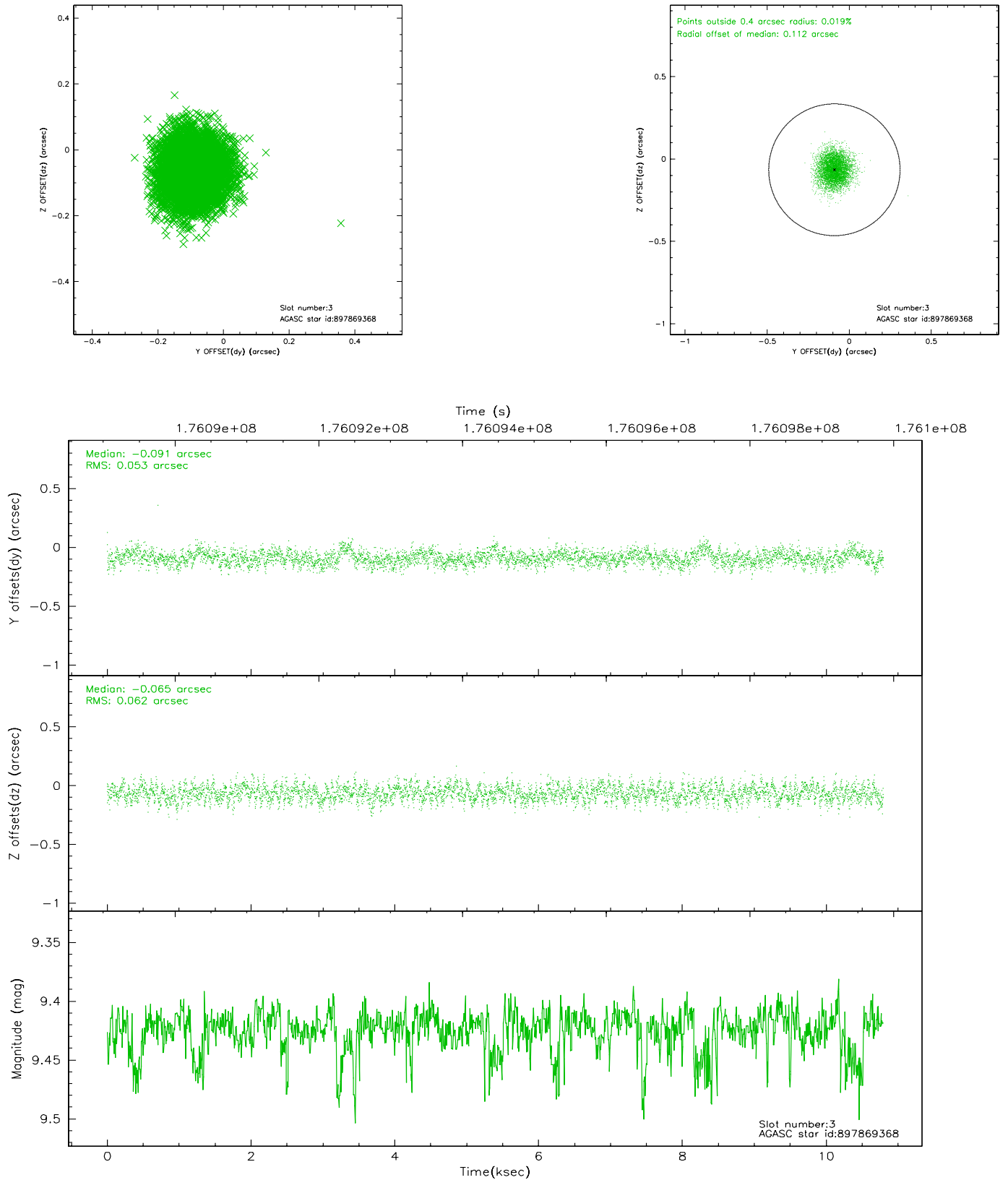


Slot Statistics

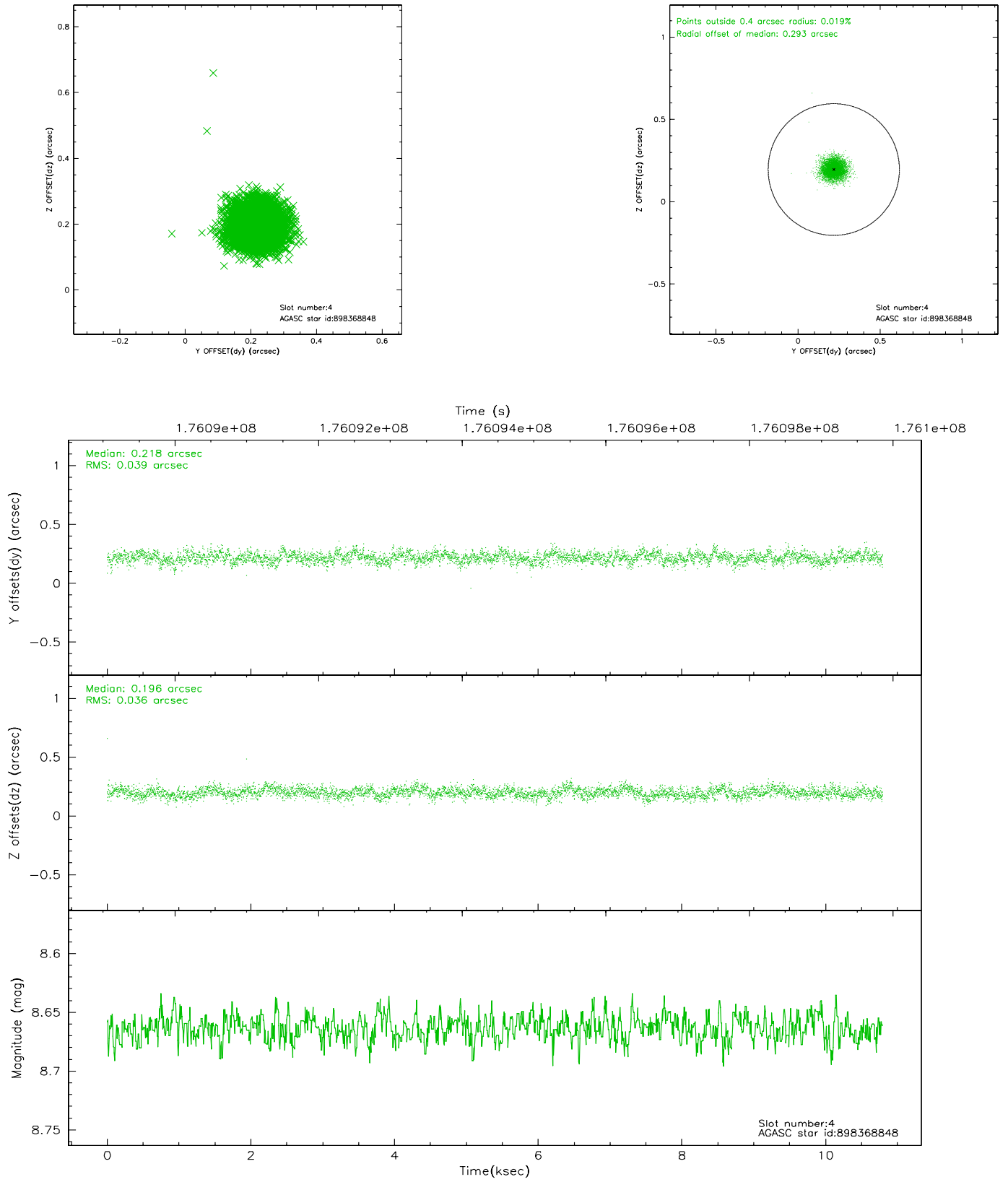
slot	status	id	mag	n_pts	med_dy	med_dz	dr1	dr2	ra	dec	mean_y	mean_z
0	FID	ACIS-S-1	7.18	2633	0.008	-0.004	0.008	0.013	0.000000	0.000000	937.17	-1725.43
1	FID	ACIS-S-4	7.20	2633	-0.002	0.003	0.007	0.011	0.000000	0.000000	2154.87	178.22
2	FID	ACIS-S-5	7.22	2633	-0.034	0.014	0.007	0.013	0.000000	0.000000	-1811.09	172.45
3	GUIDE	897869368	9.42	5265	-0.091	-0.065	0.087	0.138	270.451371	-28.086928	-2026.55	-2306.32
4	GUIDE	898368848	8.66	5267	0.218	0.196	0.057	0.092	271.700599	-29.036638	1859.09	1185.36
5	GUIDE	898371304	8.41	5267	-0.004	-0.072	0.078	0.126	270.531151	-28.390506	-910.68	-2186.13
6	GUIDE	897867000	9.60	5262	-0.191	-0.099	0.100	0.159	270.535158	-28.004749	-2288.53	-2006.94
7	GUIDE	898397904	9.01	5263	0.066	0.038	0.074	0.122	271.468366	-29.222006	2426.28	374.85

2.4 Star Slots

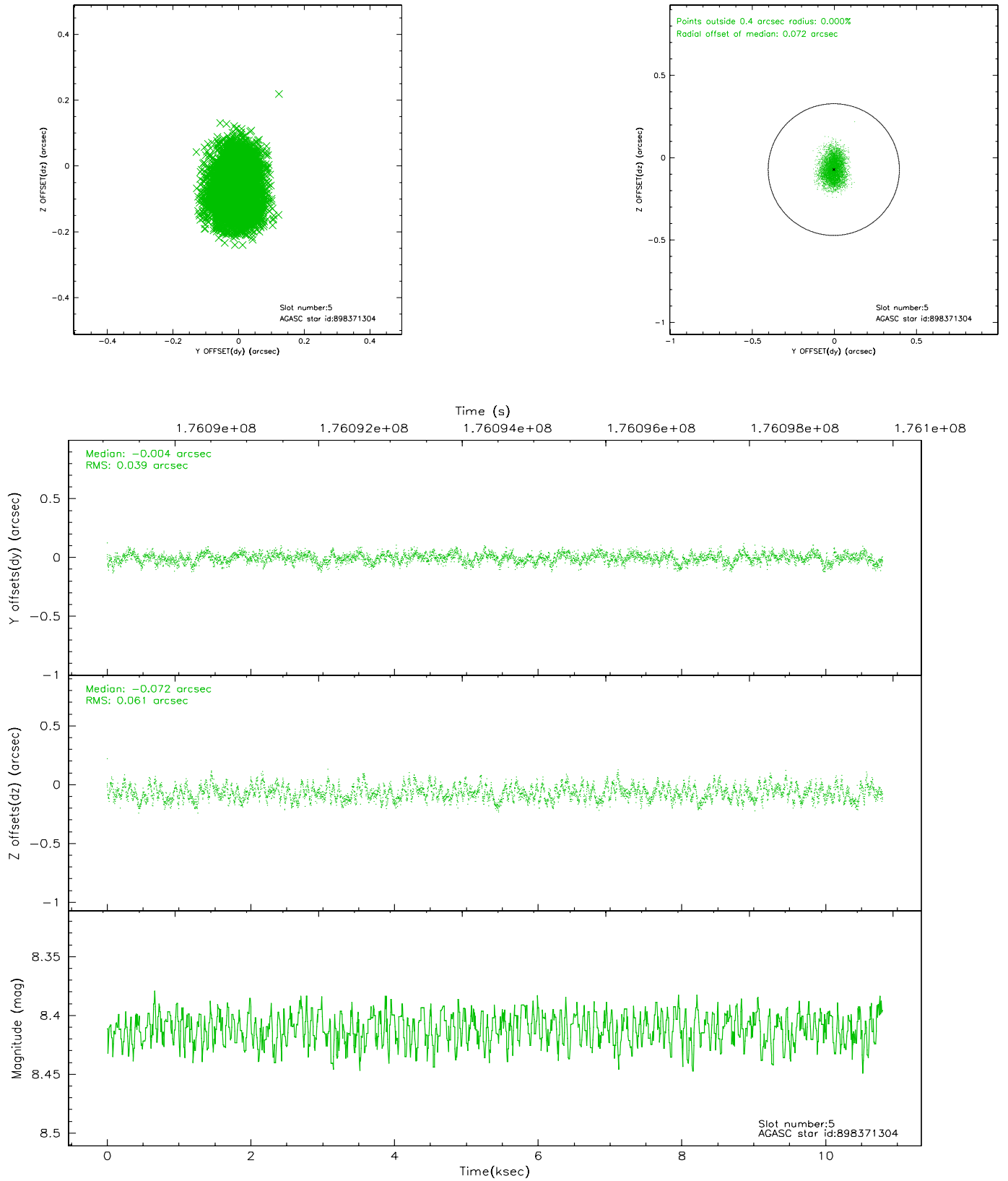
2.4.1 Slot 3



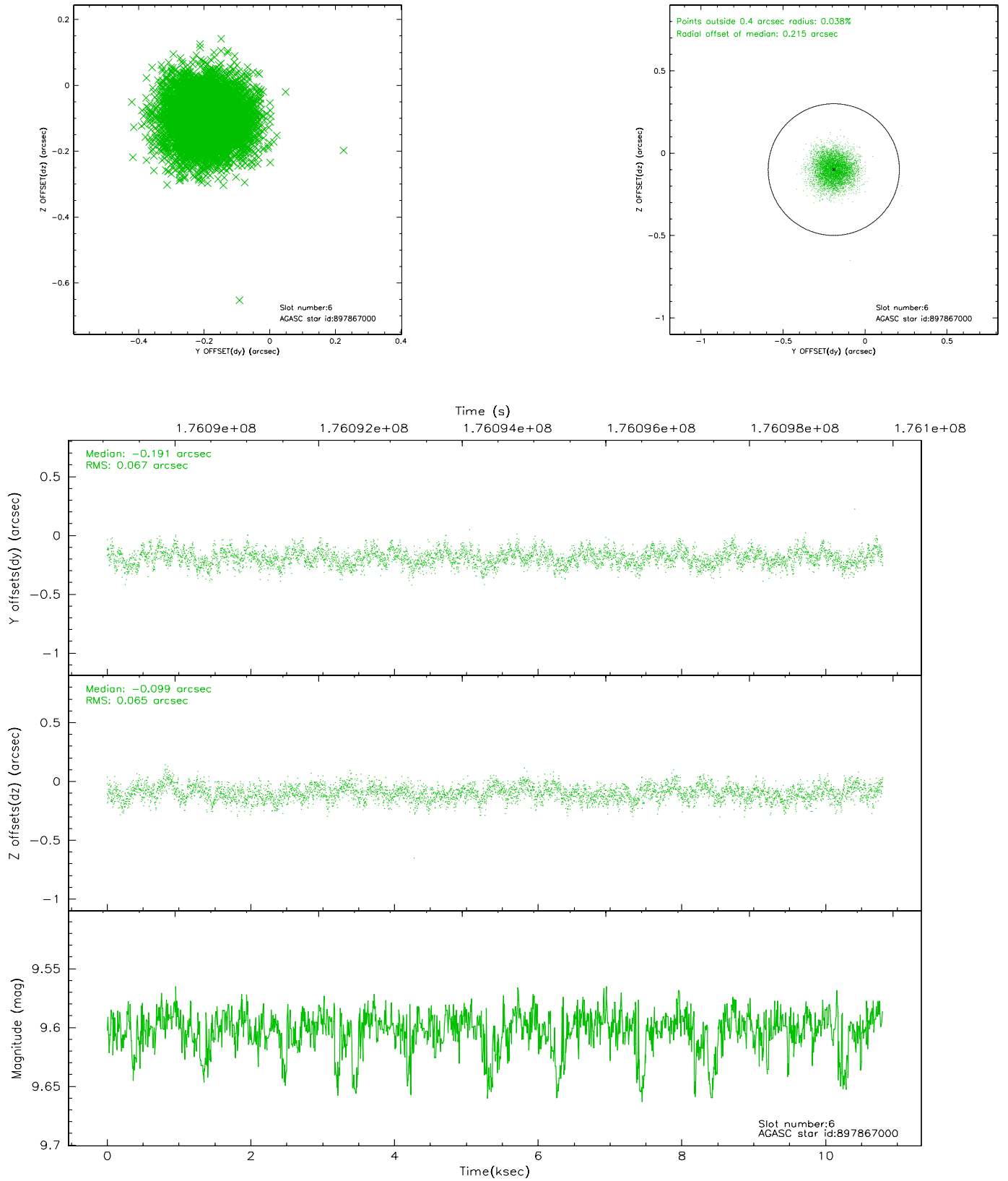
2.4.2 Slot 4



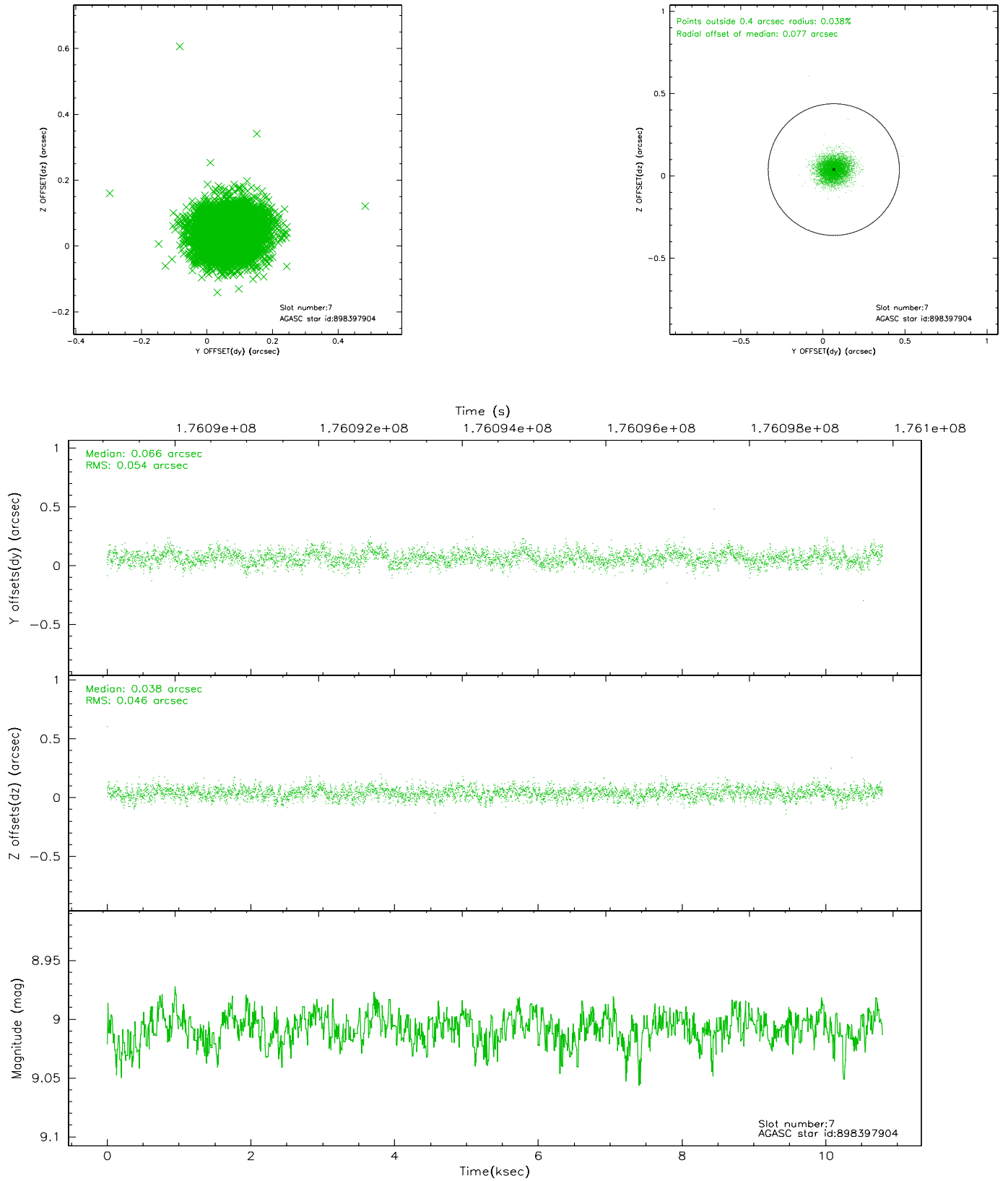
2.4.3 Slot 5



2.4.4 Slot 6

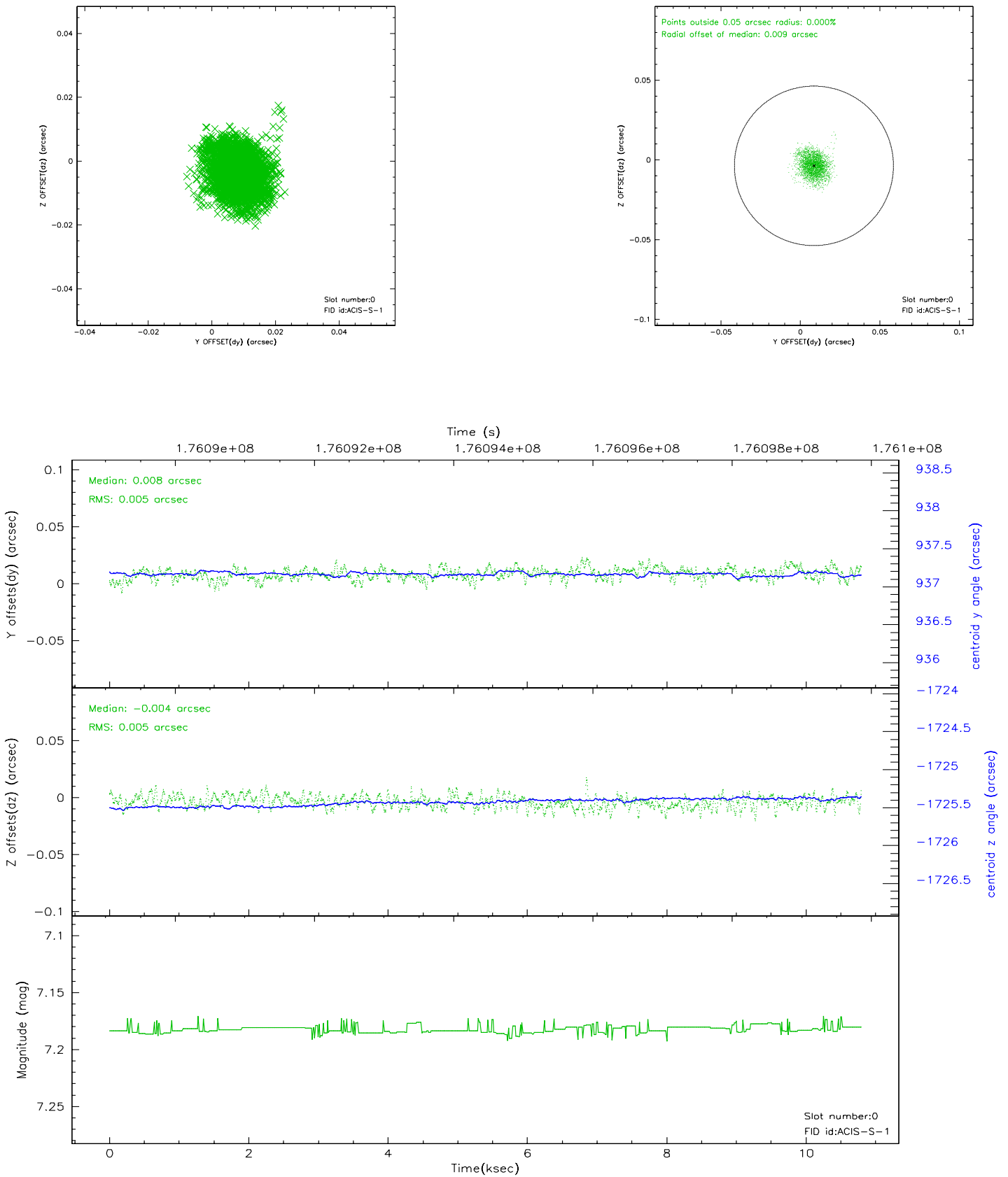


2.4.5 Slot 7

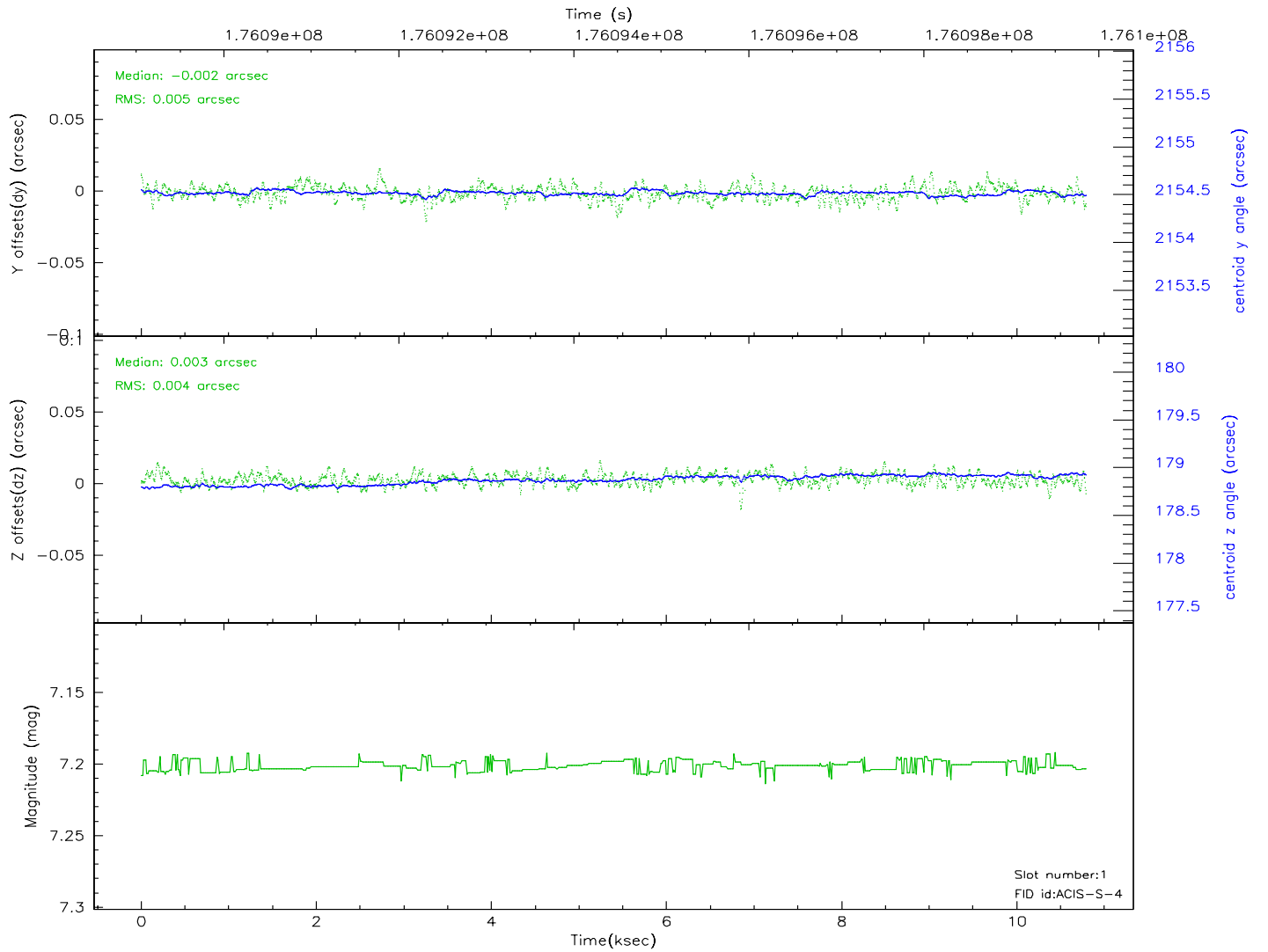
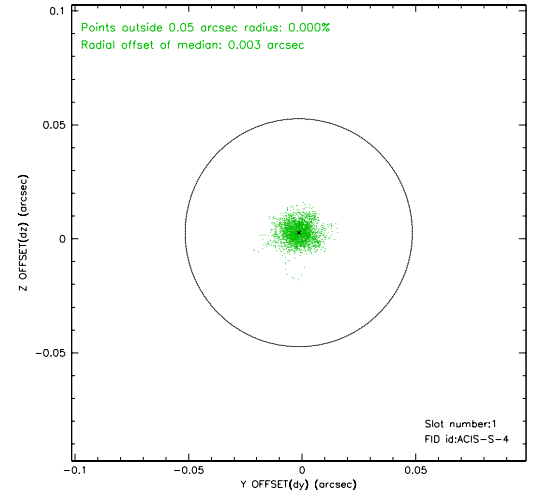
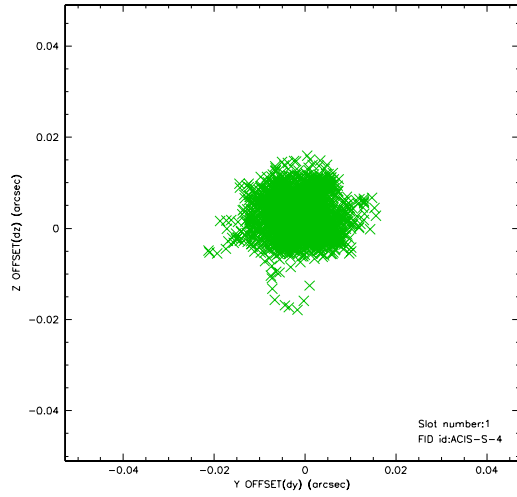


2.5 FID Slots

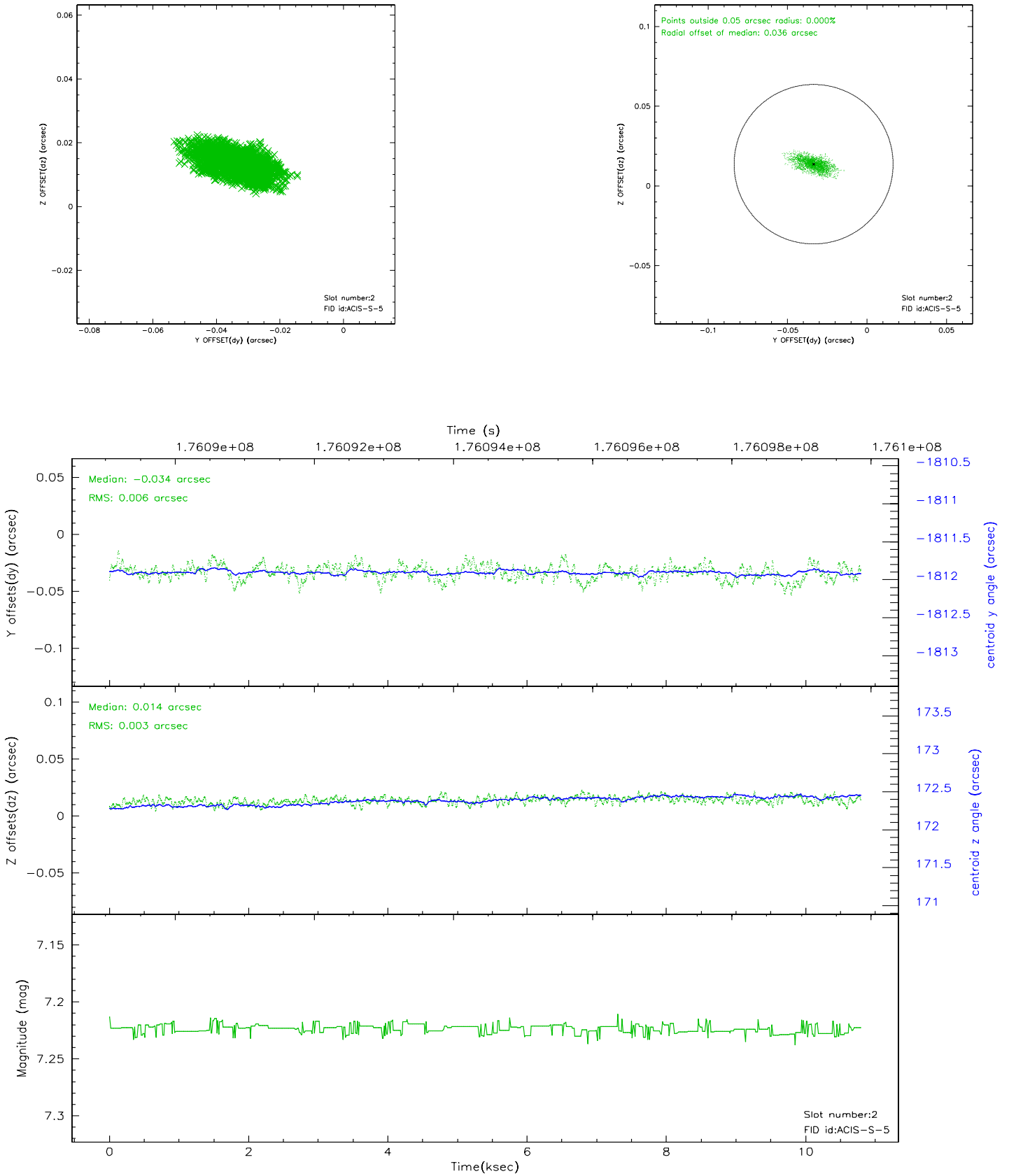
2.5.1 Slot 0



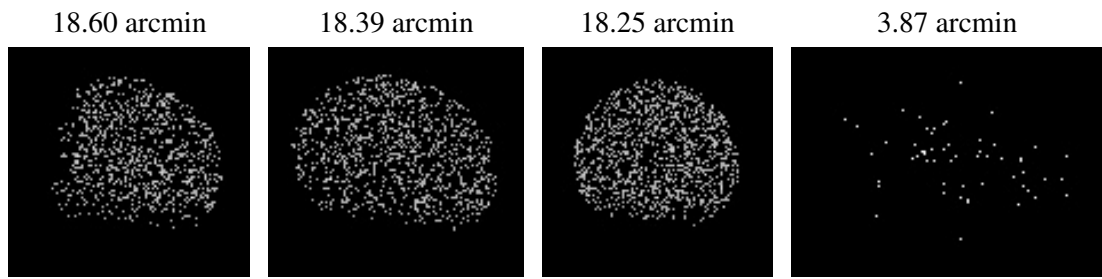
2.5.2 Slot 1



2.5.3 Slot 2



3 Point Sources



A Summary

A.1 Status

V&V Scientist	Joy Nichols
V&V Date (YYYY-MM-DD)	2006.07.18
V&V Edition	1
V&V Disposition and Status	OK
V&V Charge Time	9.846

A.2 Comments

Bias file for chip S8 was incomplete in telemetry. Procedures for replacing the missing part of that bias file with scaled data from a similar bias file were used. This replacement bias does not affect the chip with the target.