

# V&V Reference Report

## L2 ASCDS Version : 7.6.8

Observation 3628 - L2 Version 001  
Chandra X-Ray Center

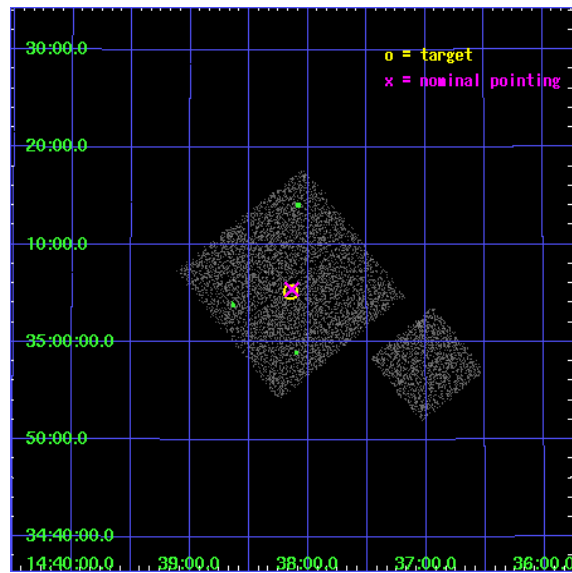
L2 Processing Date : Jul 30 2006

## Contents

<b>1</b>	<b>Front</b>	<b>2</b>
<b>2</b>	<b>OBI</b>	<b>3</b>
2.1	OBI . . . . .	3
2.1.1	Images . . . . .	3
2.1.2	Bias . . . . .	3
2.1.3	Parameters . . . . .	4
2.1.4	Events . . . . .	4
2.2	Compared Parameters . . . . .	5
2.3	Aspect . . . . .	6
2.4	Star Slots . . . . .	9
2.4.1	Slot 3 . . . . .	9
2.4.2	Slot 4 . . . . .	10
2.4.3	Slot 5 . . . . .	11
2.4.4	Slot 6 . . . . .	12
2.4.5	Slot 7 . . . . .	13
2.5	FID Slots . . . . .	14
2.5.1	Slot 0 . . . . .	14
2.5.2	Slot 1 . . . . .	15
2.5.3	Slot 2 . . . . .	16
<b>3</b>	<b>Point Sources</b>	<b>17</b>
<b>A</b>	<b>Summary</b>	<b>18</b>
A.1	Status . . . . .	18
A.2	Comments . . . . .	18

# 1 Front

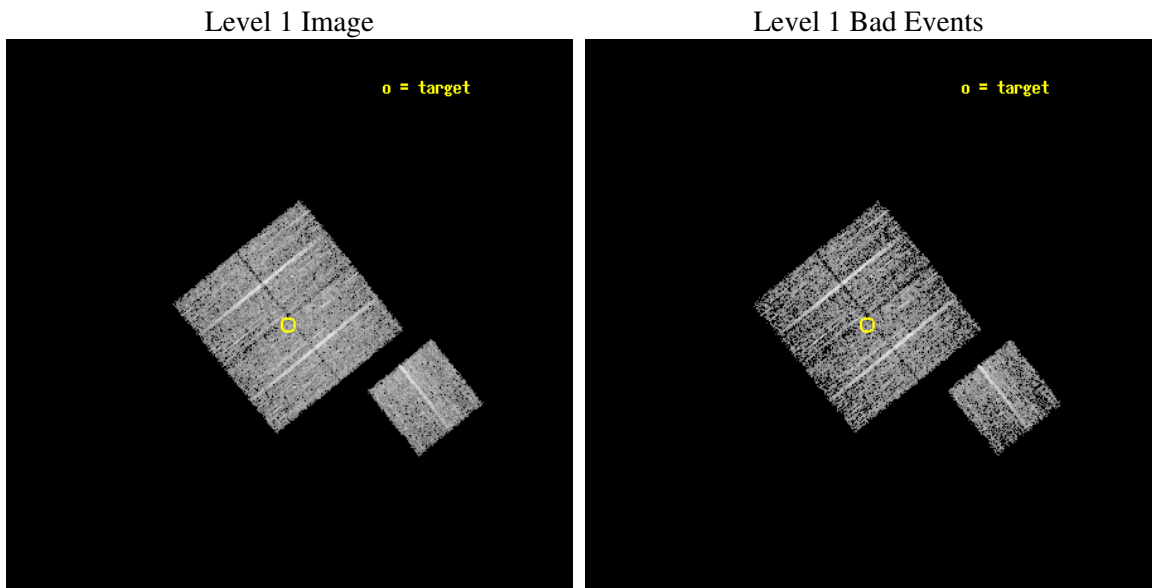
seq_num	900228
obs_id	3628
title	CHANDRA LARGE SCALE SURVEY OF THE NOAO BOOTES DEEP FIELD
observer	Dr. Stephen Murray
object	NOAO FIELD F39
dtcycle	0
cycle	P
ra_targ	219.536665
dec_targ	35.08647
ra_nom	219.53404789631
dec_nom	35.090560803053
roll_nom	141.01019160515
revision	2
ontime	4671.6590207815
livetime	4610.6203564497
ontime0	4671.6590208113
ontime1	4668.5180206001
ontime2	4674.7999910116
ontime3	4671.6590207815
ontime6	4671.6590207517
l2events	10012



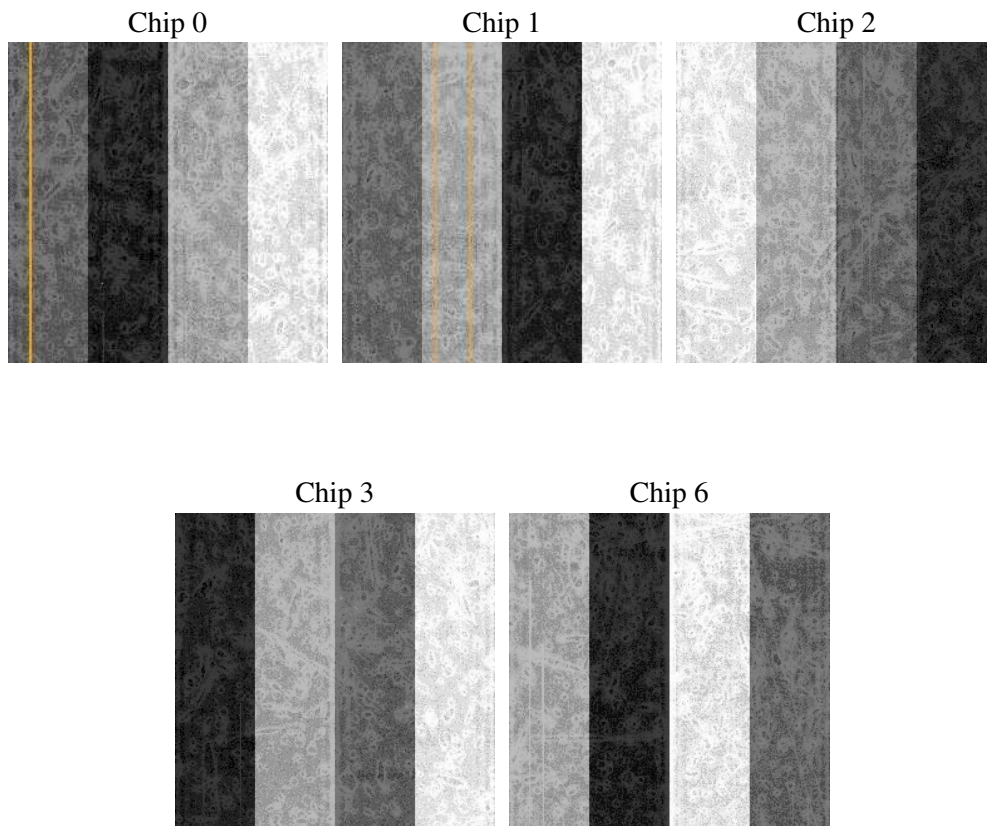
## 2 OBI

### 2.1 OBI

#### 2.1.1 Images



#### 2.1.2 Bias



### 2.1.3 Parameters

obi_num	1
ascdsver	7.6.8
caldbver	3.2.2
date	2006-07-30T05:44:07
revision	2

sched_exp_time	4900.000000
ontime	4676.9583072662
ontime0	4676.958307296
ontime1	4673.8173070848
ontime2	4680.0992774963
ontime3	4676.9583072662
ontime6	4680.099327296
l1events	114263

### 2.1.4 Events

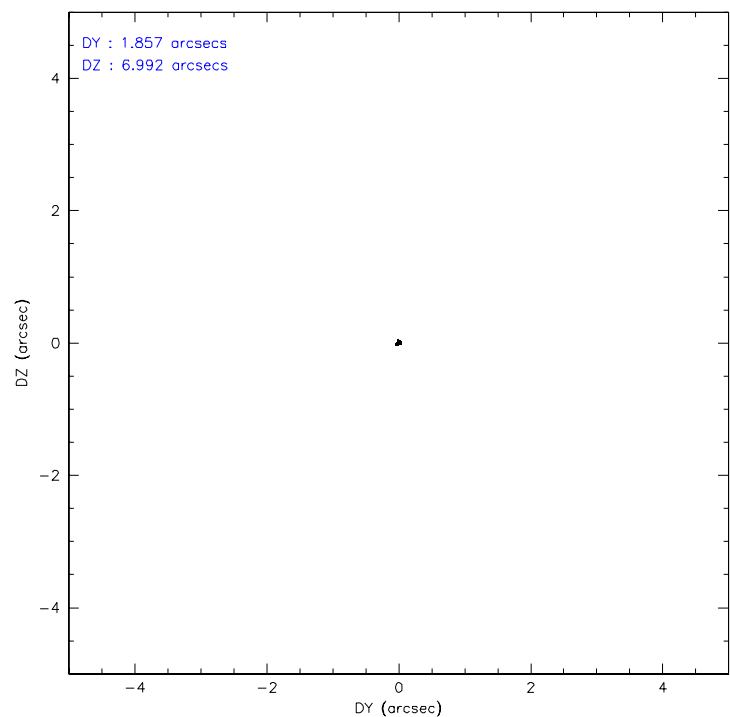
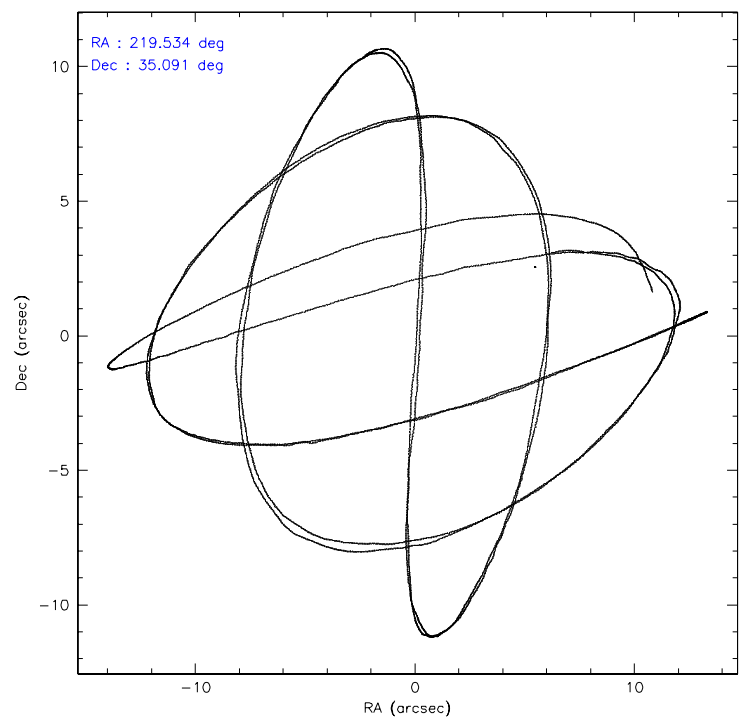
	ccd 0	ccd 1	ccd 2	ccd 3	ccd 6
level 1 events	22781	21110	24243	22979	23150
rejected events	20341	18599	21821	20553	20733
rejected %	89%	88%	90%	89%	89%

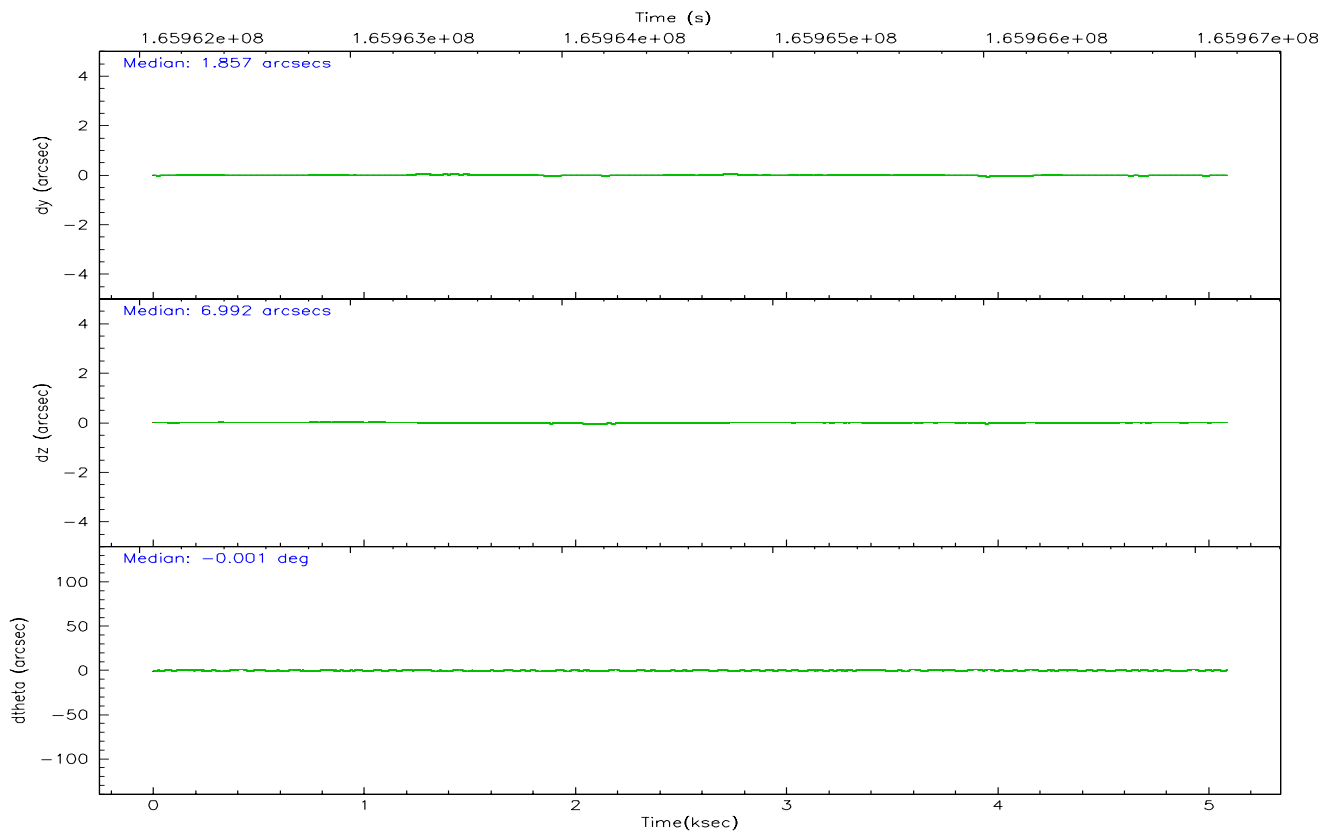
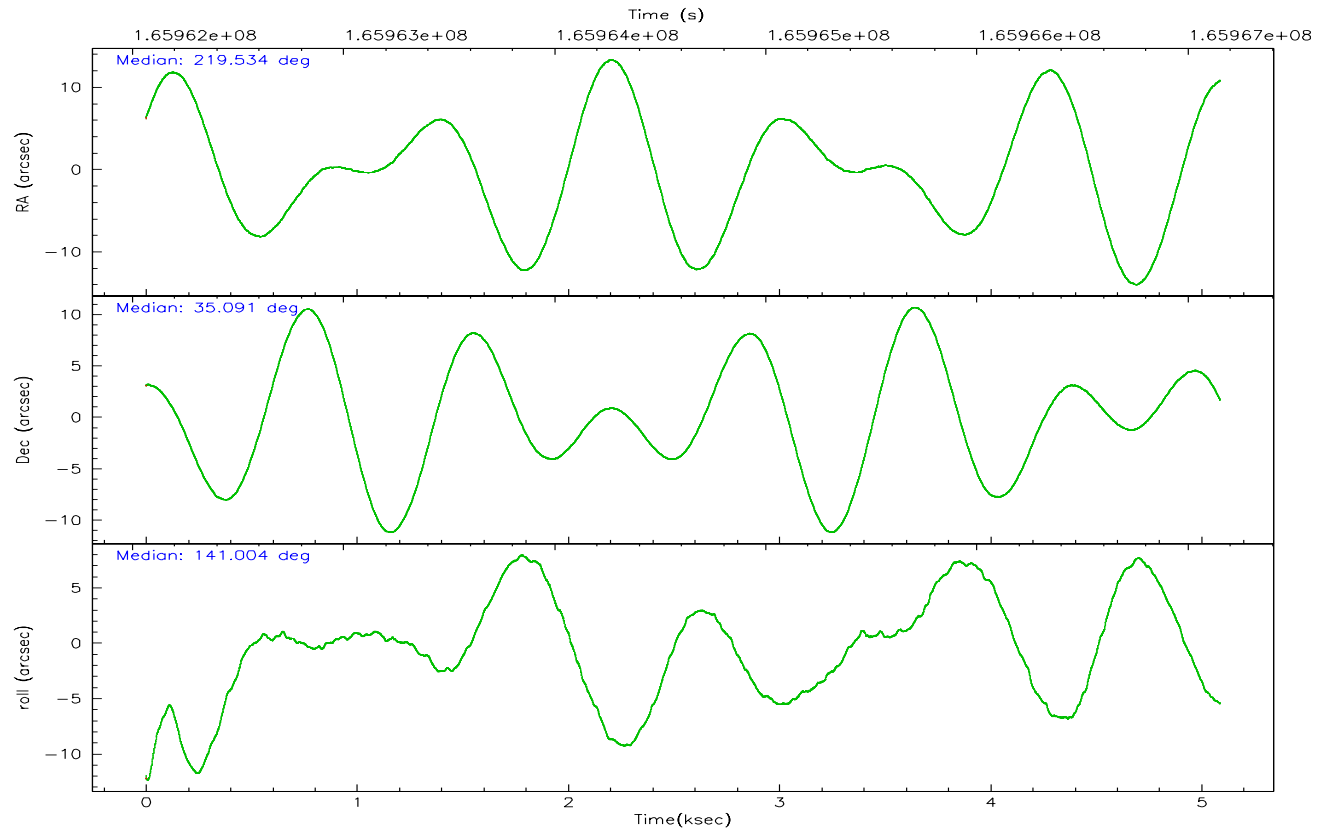
	ccd 0	ccd 1	ccd 2	ccd 3	ccd 6
grade 0 events	885	880	945	961	945
	3%	4%	3%	4%	4%
grade 1 events	10	9	7	10	9
	0%	0%	0%	0%	0%
grade 2 events	542	530	578	509	452
	2%	2%	2%	2%	1%
grade 3 events	290	309	244	246	287
	1%	1%	1%	1%	1%
grade 4 events	287	298	263	251	272
	1%	1%	1%	1%	1%
grade 5 events	629	703	632	796	760
	2%	3%	2%	3%	3%
grade 6 events	438	495	394	461	466
	1%	2%	1%	2%	2%
grade 7 events	19700	17886	21180	19745	19959
	86%	84%	87%	85%	86%

## 2.2 Compared Parameters

Parameter	Planned	Actual	Parameter	Planned	Actual
Instrument	ACIS	ACIS	Obspar format version number	6	6
Detector	ACIS-01236	ACIS-01236	Obspar file type	PREDICTED	ACTUAL
Grating	NONE	NONE	Obspar update status	NONE	UPDATED
Data mode	VFAINT	VFAINT	On-chip summing requested	N	N
Observation mode	POINTING	POINTING	Subarray requested	NONE	NONE
Pointing RA	219.567071	219.5340478963083	Alternating exposures requested	N	N
Pointing Dec	35.086394	35.09056080305335	Primary exposure time	0.000000	3.1
Pointing Roll	140.782517	141.0101916051545			
SIM focus pos (mm)	-0.782348	-0.7809083437167272			
SIM defocus (mm)	0	0.001439871863259334			
SIM translation stage pos (mm)	-233.592463	-233.5874344608287			
SIM translation stage offset (mm)	0	-0.005018542100998502			
Observation start time	165962252.184000	165961875.62404			
Observation start date	2003-04-05T20:36:28	2003-04-05T20:31:15			
Observation end time	165967152.184000	165967285.57427			
Observation end date	2003-04-05T21:58:08	2003-04-05T22:01:25			
Read mode	TIMED	TIMED			

## 2.3 Aspect





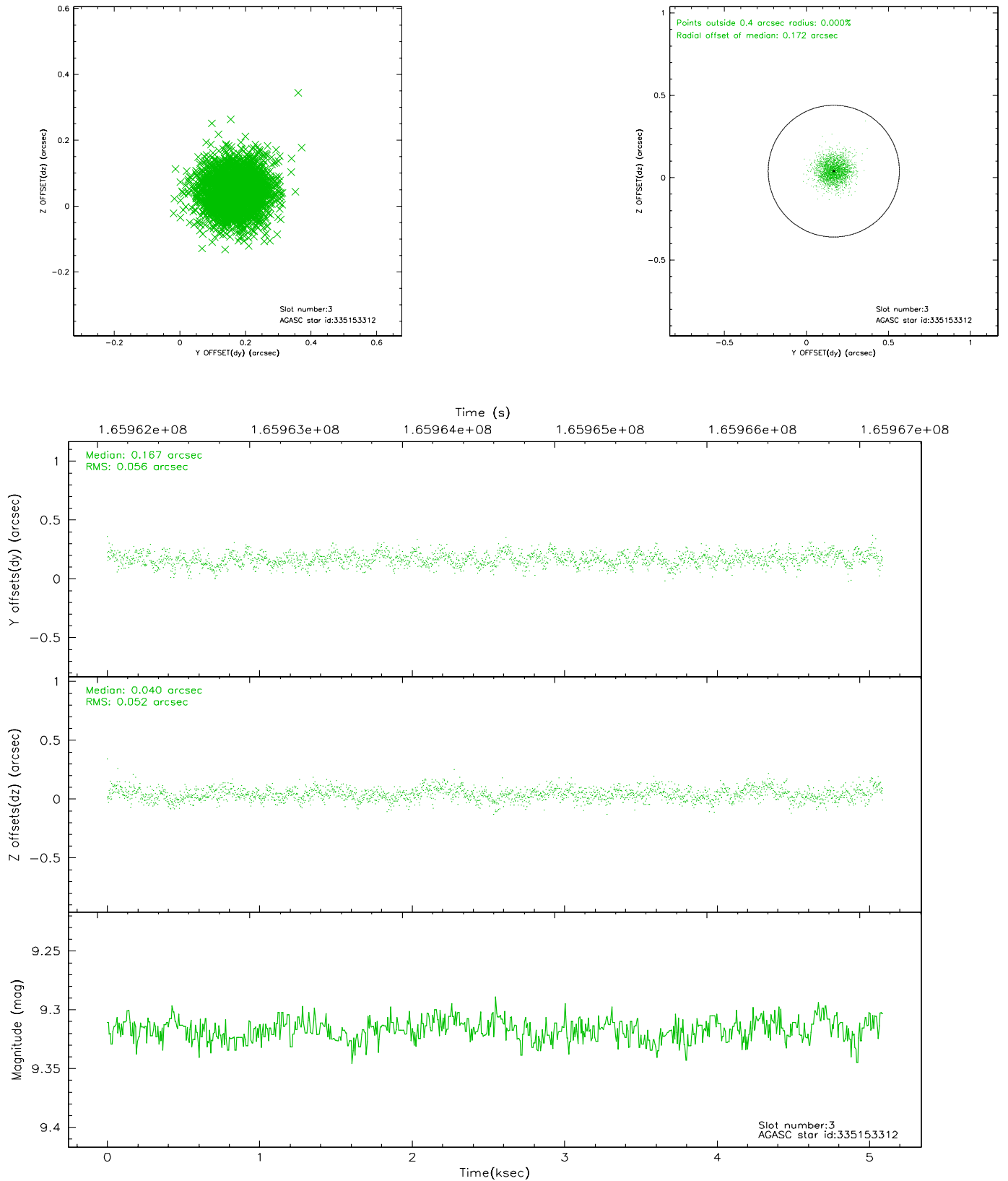
### Slot Statistics

slot	status	id	mag	n_pts	med_dy	med_dz	dr1	dr2	ra	dec	mean_y	mean_z
0	FID	ACIS-I-1	7.25	1242	-0.011	0.037	0.006	0.011	0.000000	0.000000	937.93	-830.37
1	FID	ACIS-I-5	7.24	1242	-0.045	0.046	0.006	0.010	0.000000	0.000000	-1809.49	1066.60
2	FID	ACIS-I-6	7.26	1242	-0.035	-0.012	0.006	0.011	0.000000	0.000000	402.23	1712.34
3	GUIDE	335153312	9.32	2482	0.167	0.040	0.081	0.132	220.353946	34.889761	-2241.25	-927.46
4	GUIDE	335414336	8.96	2483	-0.109	-0.010	0.075	0.117	218.979022	35.090910	1354.71	1078.63
5	GUIDE	335544864	8.32	2483	-0.019	0.090	0.069	0.113	220.434915	35.240289	-1618.69	-2050.49
6	GUIDE	335545712	9.87	2482	0.058	0.129	0.104	0.174	220.165930	35.199137	-1105.06	-1433.03
7	GUIDE	335023304	8.41	2482	-0.096	-0.248	0.084	0.130	218.883608	34.686545	661.25	2388.52

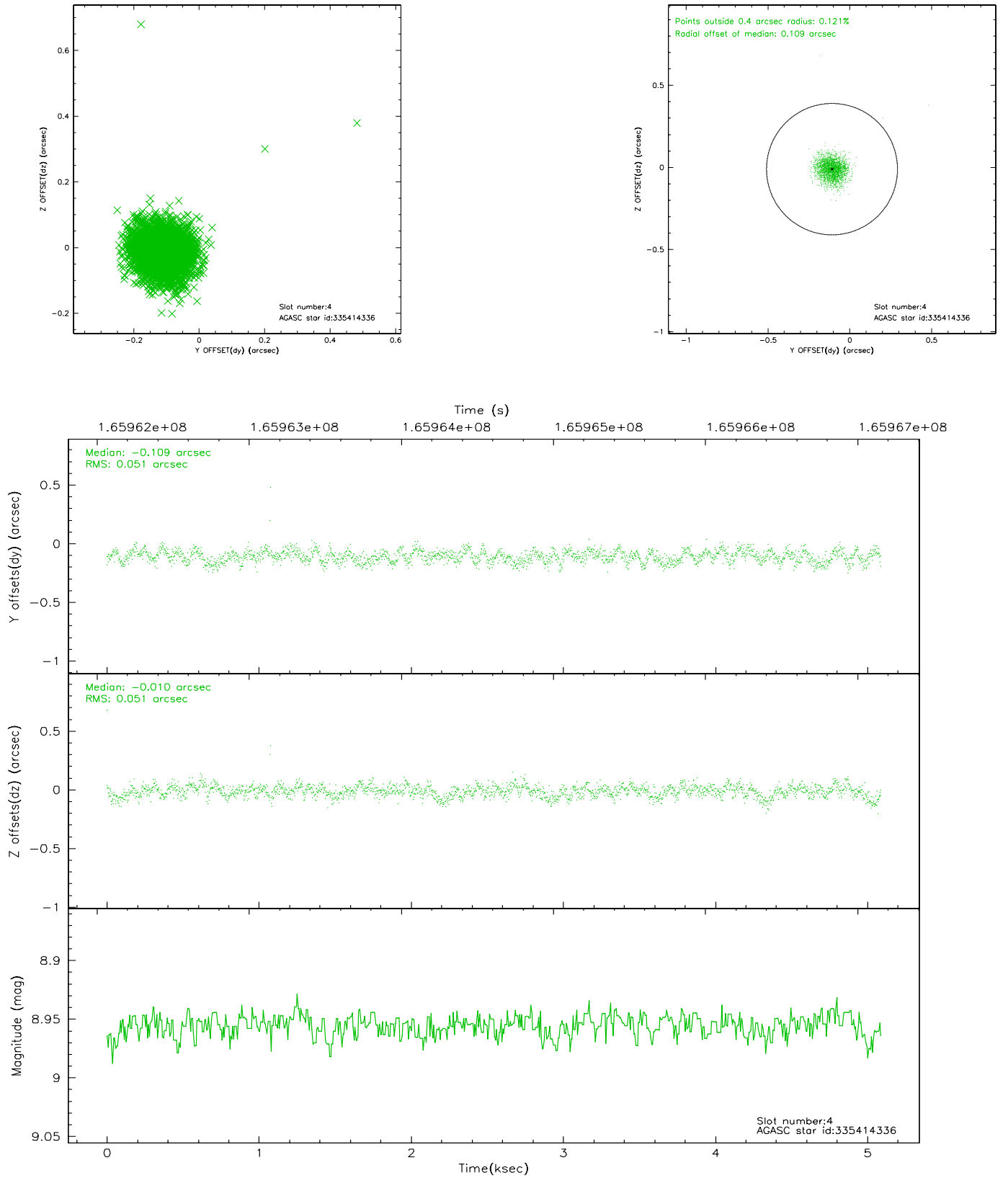


## 2.4 Star Slots

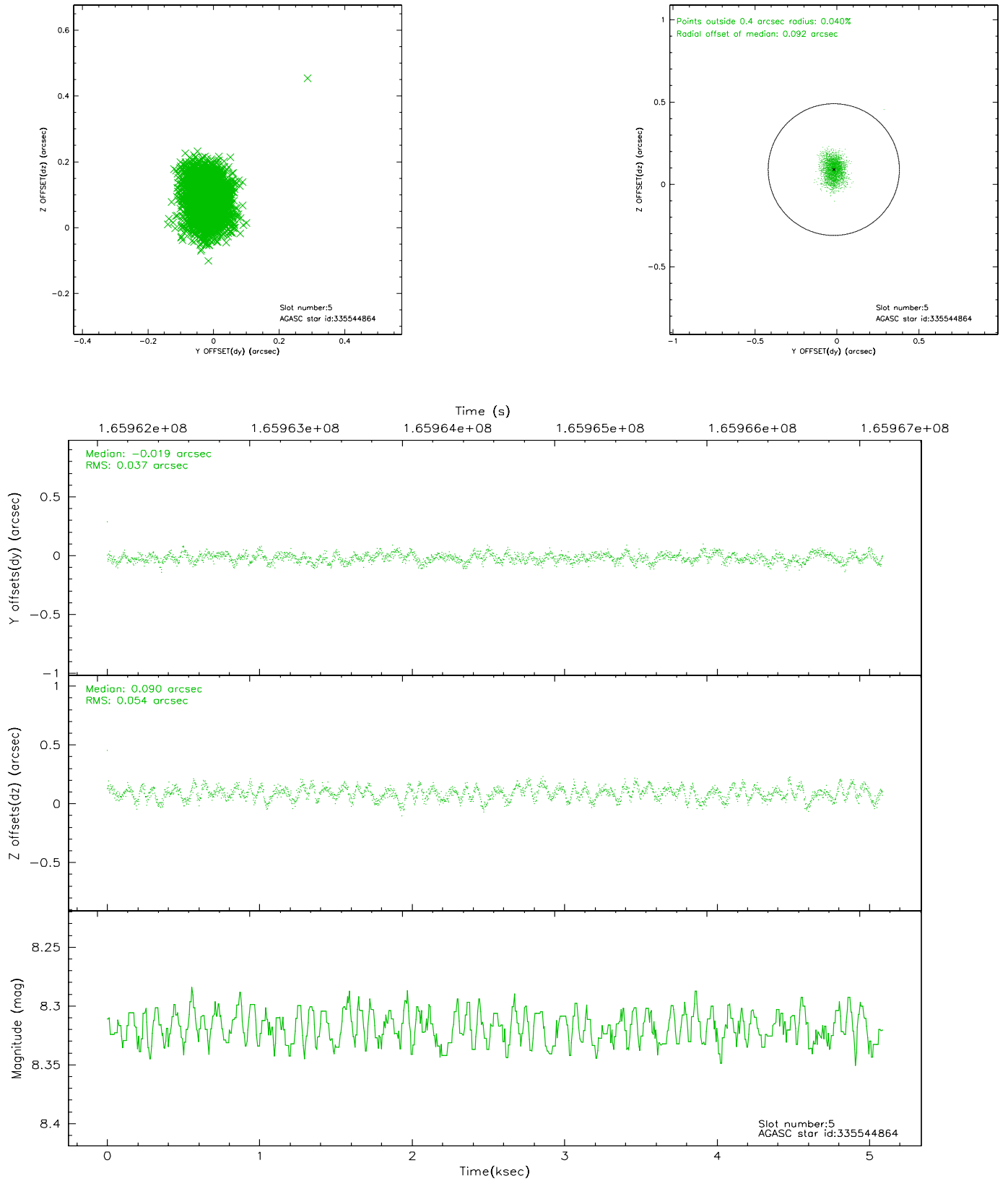
### 2.4.1 Slot 3



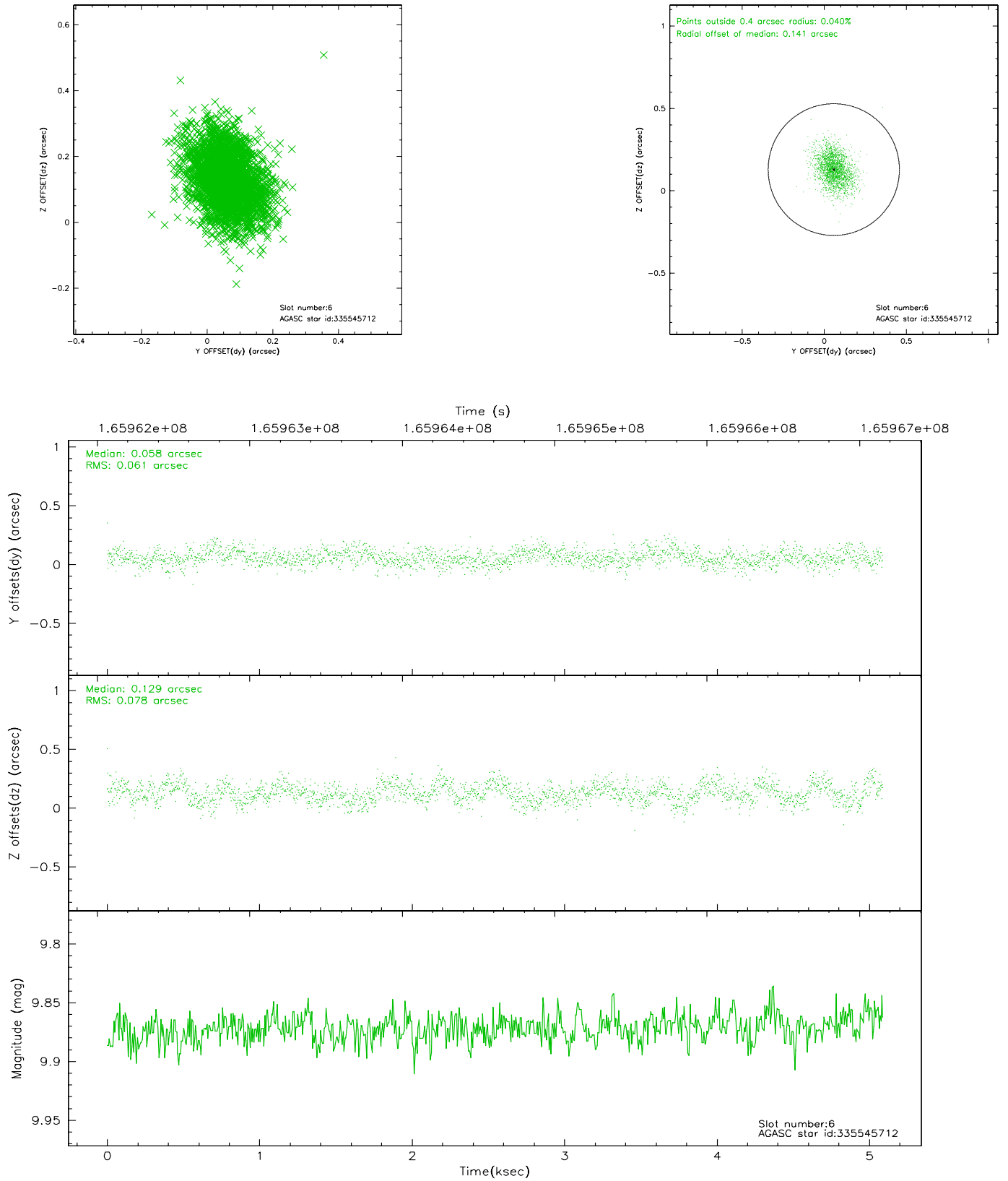
## 2.4.2 Slot 4



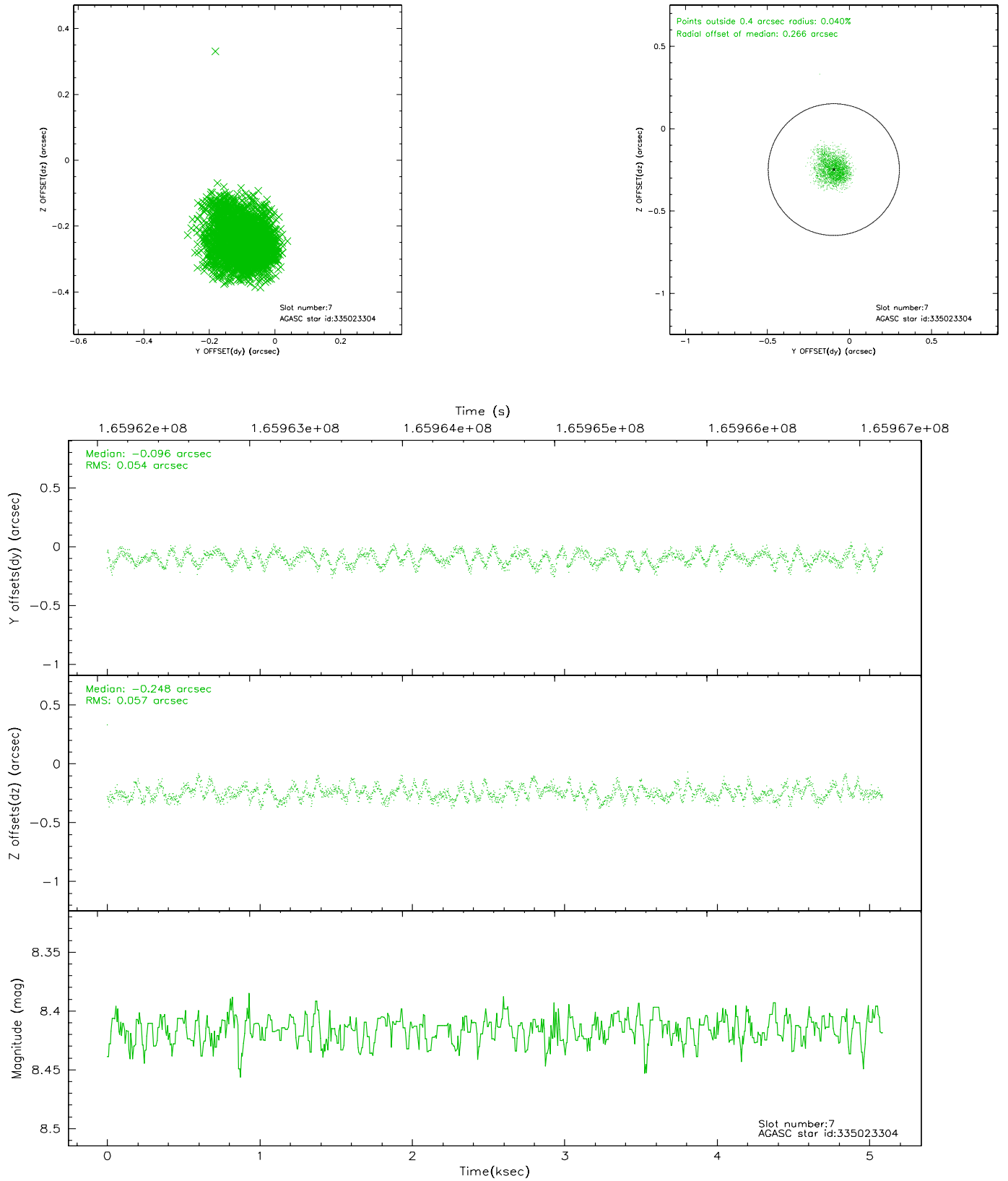
### 2.4.3 Slot 5



## 2.4.4 Slot 6

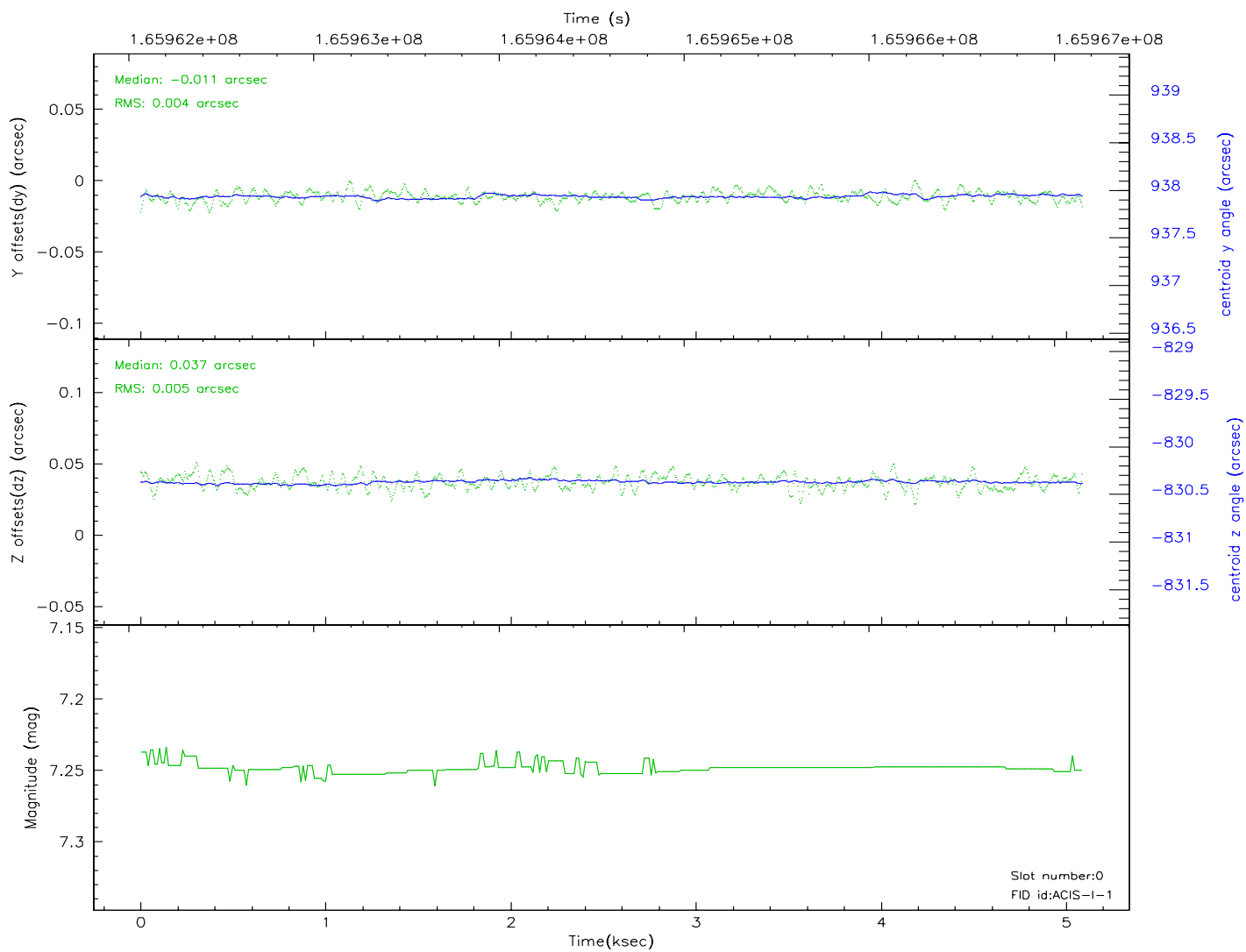
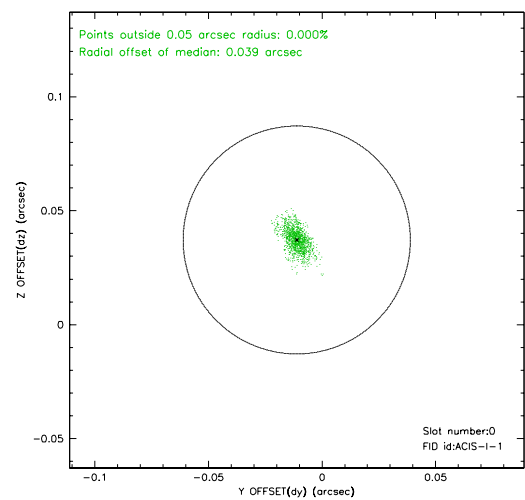
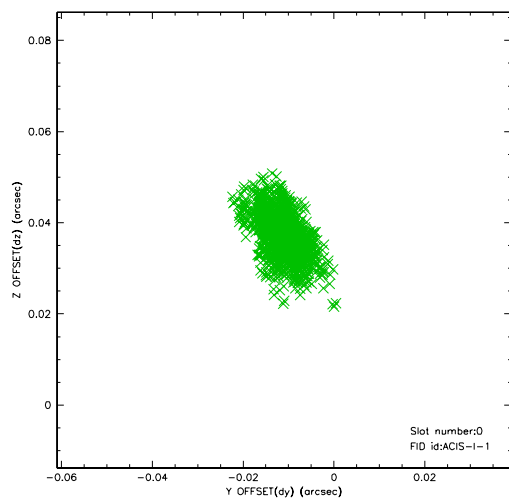


## 2.4.5 Slot 7

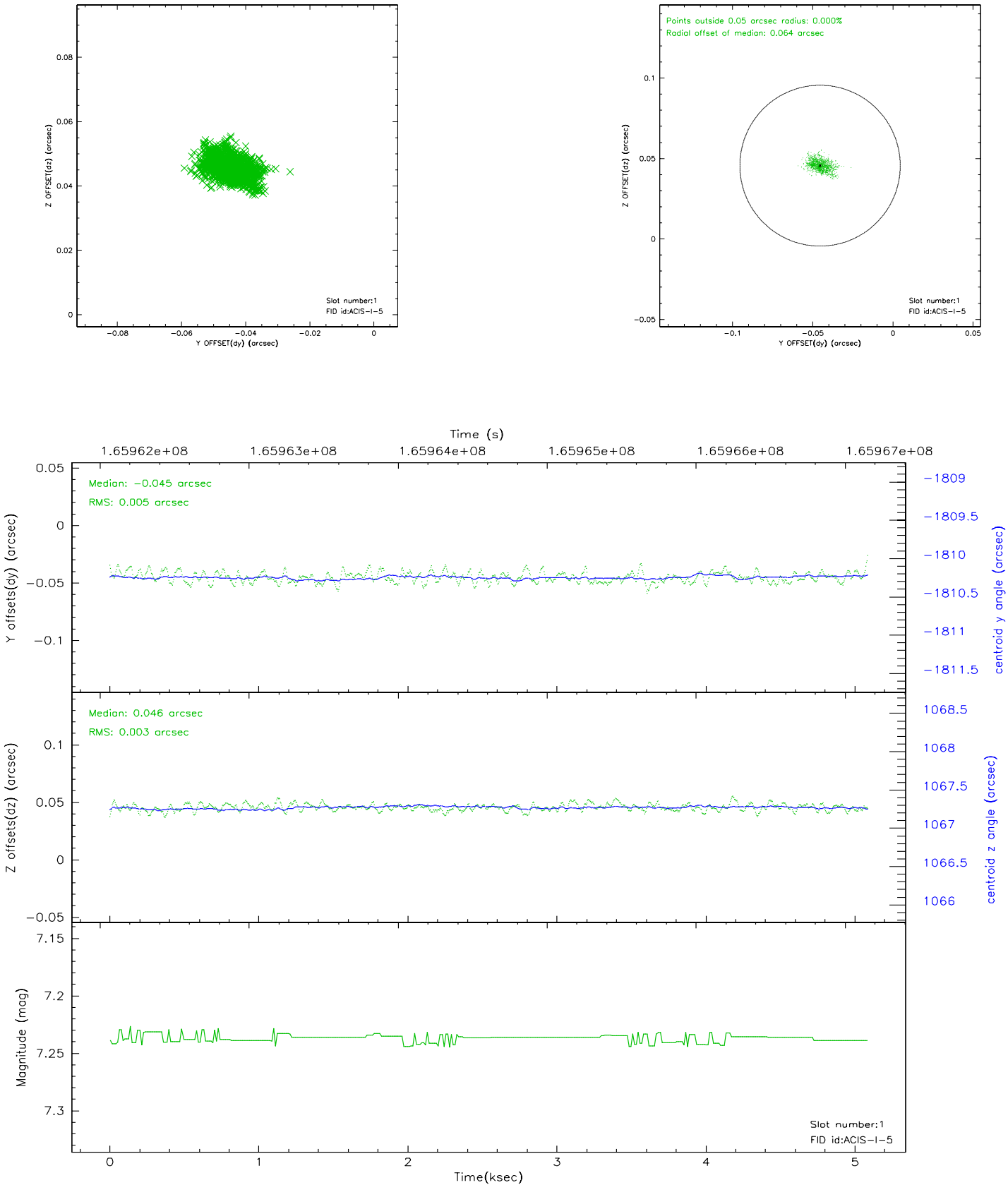


## 2.5 FID Slots

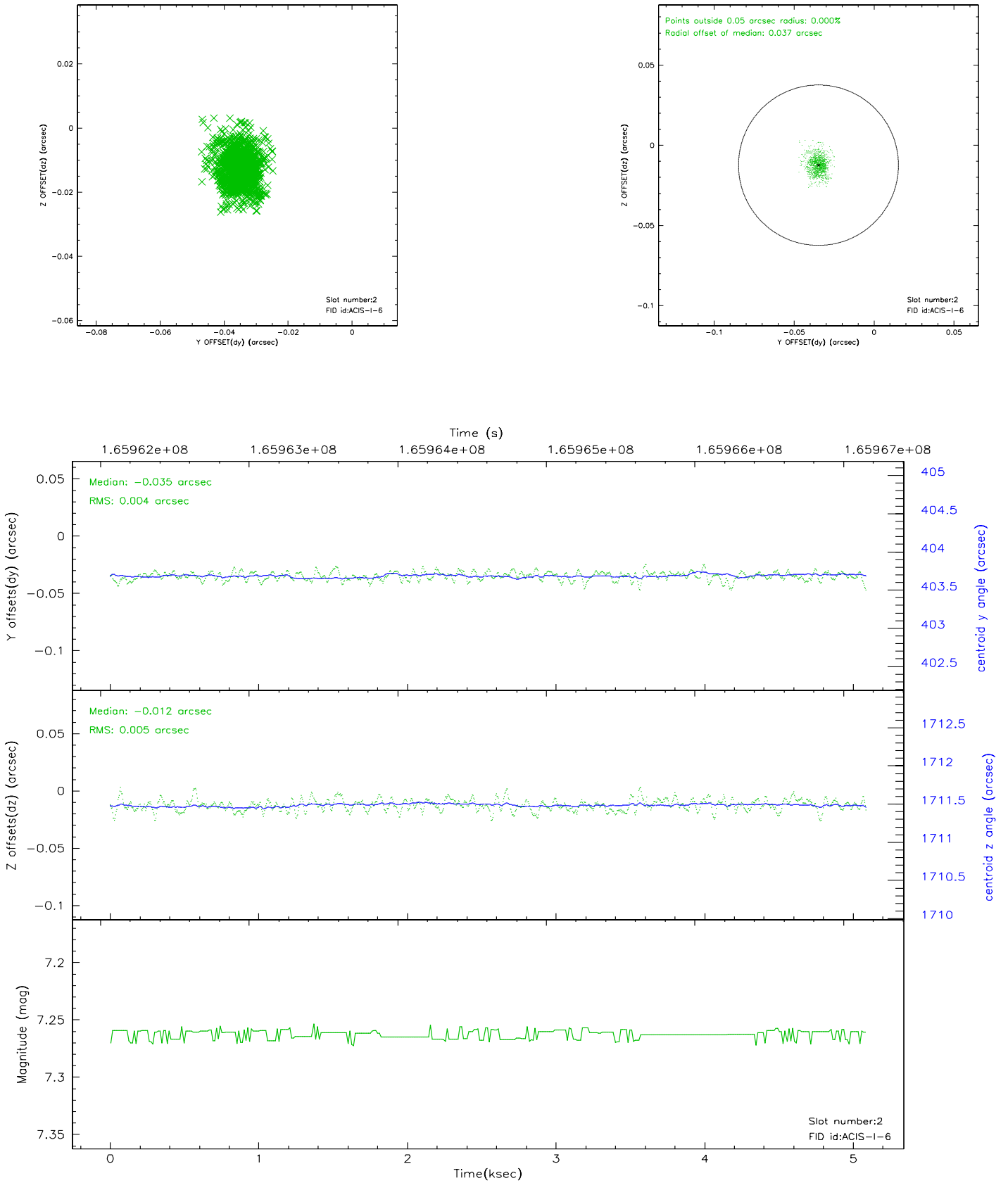
### 2.5.1 Slot 0



2.5.2 Slot 1

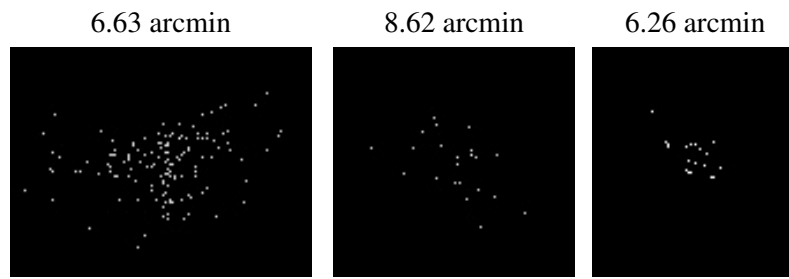


### 2.5.3 Slot 2





### 3 Point Sources



## A Summary

### A.1 Status

V&V Scientist	Jen Lauer
V&V Date (YYYY-MM-DD)	2006.07.30
V&V Edition	1
V&V Disposition and Status	OK
V&V Charge Time	4.671

### A.2 Comments