

# V&V Reference Report

## L2 ASCDS Version : 8.4.5

Observation 3598 - L2 Version 3  
Chandra X-Ray Center

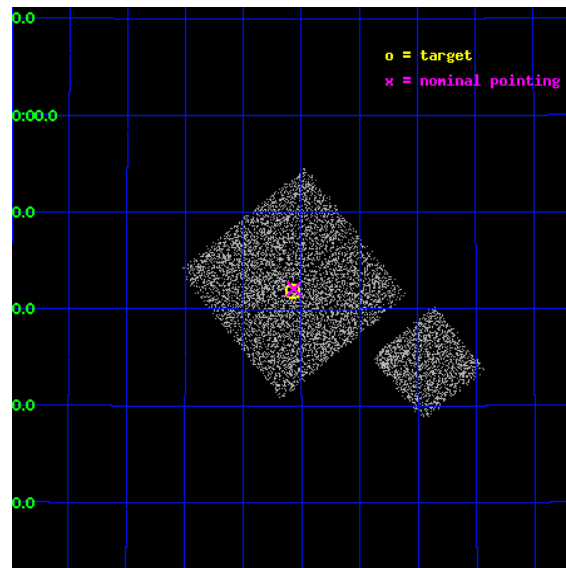
L2 Processing Date : Oct 25 2012

## Contents

<b>1</b>	<b>Front</b>	<b>2</b>
<b>2</b>	<b>OBI</b>	<b>3</b>
2.1	OBI . . . . .	3
2.1.1	Images . . . . .	3
2.1.2	Bias . . . . .	3
2.1.3	Parameters . . . . .	4
2.1.4	Events . . . . .	4
2.2	Compared Parameters . . . . .	5
2.3	Aspect . . . . .	6
2.4	Star Slots . . . . .	9
2.4.1	Slot 3 . . . . .	9
2.4.2	Slot 4 . . . . .	10
2.4.3	Slot 5 . . . . .	11
2.4.4	Slot 6 . . . . .	12
2.4.5	Slot 7 . . . . .	13
2.5	FID Slots . . . . .	14
2.5.1	Slot 0 . . . . .	14
2.5.2	Slot 1 . . . . .	15
2.5.3	Slot 2 . . . . .	16
<b>A</b>	<b>Summary</b>	<b>17</b>
A.1	Status . . . . .	17
A.2	Comments . . . . .	17

# 1 Front

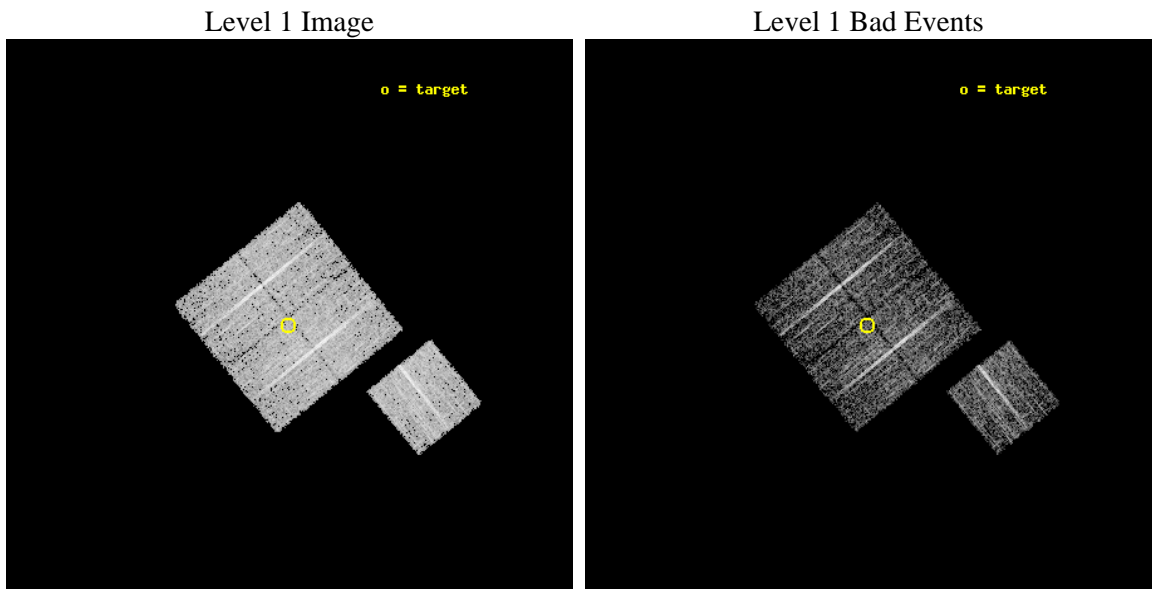
seq_num	900198	Sequence number
obs_id	3598	Observation id
title	CHANDRA LARGE SCALE SURVEY OF THE NOAO BOOTES DEEP FIELD	Proposal
observer	Dr. Stephen Murray	Principal investigator
object	NOAO FIELD F34	Source name
dtcycle	0	&#160
cycle	P	events from which exps? Prim/Second/Both
ra_targ	218.893848	Observer's specified target RA [deg]
dec_targ	35.697552	Observer's specified target Dec [deg]
ra_nom	218.89120657851	Nominal RA [deg]
dec_nom	35.701679517904	Nominal Dec [deg]
roll_nom	141.01023715391	Nominal Roll [deg]
revision	3	Processing version of data
ontime	4776.9762776196	Sum of GTIs [s]
livetime	4714.5615657937	Livetime [s]
ontime0	4776.8531576097	Sum of GTIs [s]
ontime1	4776.894197613	Sum of GTIs [s]
ontime2	4776.9352376163	Sum of GTIs [s]
ontime3	4776.9762776196	Sum of GTIs [s]
ontime6	4776.8121176064	Sum of GTIs [s]
l2events	9599	Number of level 2 events



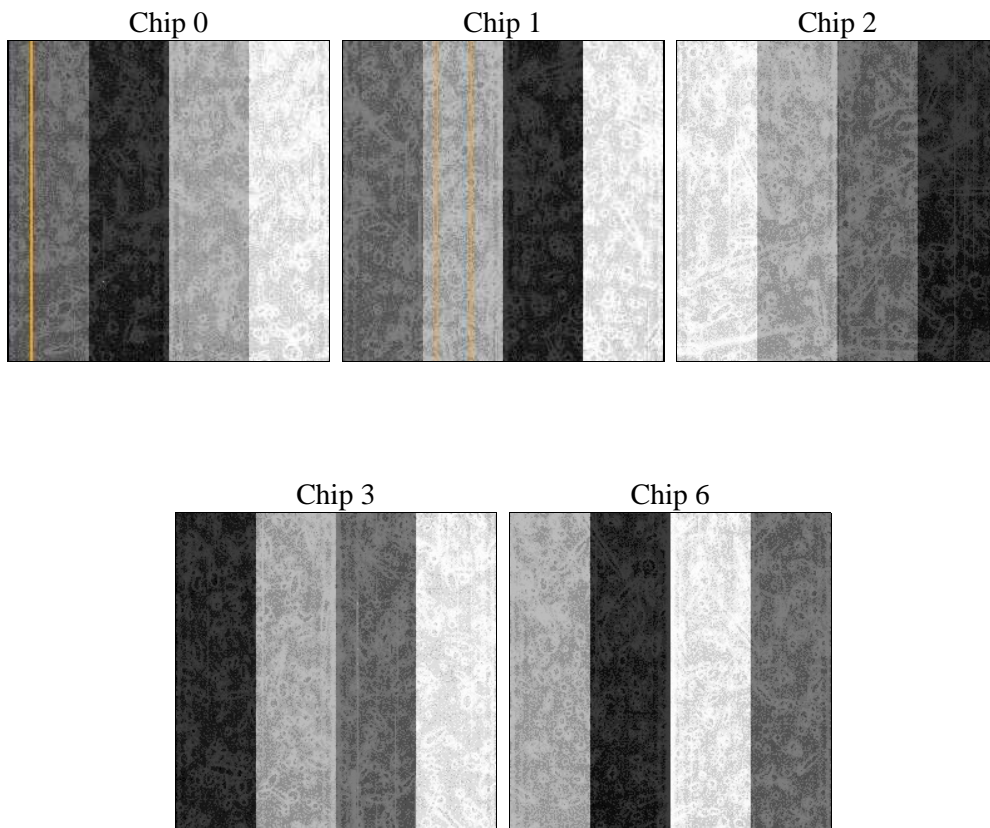
## 2 OBI

### 2.1 OBI

#### 2.1.1 Images



#### 2.1.2 Bias



### 2.1.3 Parameters

obi_num	1	Obi number	sched_exp_time	5000.000000	[s] Scheduled observation exposure time
ascdsver	8.4.5	Processing system revision	ontime	4776.9762776196	Sum of GTIs [s]
caldsver	4.5.2	&#160	ontime0	4776.8531576097	Sum of GTIs [s]
date	2012-10-25T23:43:45	Date and time of file creation	ontime1	4776.894197613	Sum of GTIs [s]
revision	3	Processing version of data	ontime2	4776.9352376163	Sum of GTIs [s]
			ontime3	4776.9762776196	Sum of GTIs [s]
			ontime6	4776.8121176064	Sum of GTIs [s]
			l1events	119056	Number of level 1 events

### 2.1.4 Events

	ccd 0	ccd 1	ccd 2	ccd 3	ccd 6
level 1 events	22532	22117	24684	23713	26010
rejected events	20168	19604	22318	21468	23613
rejected %	89%	88%	90%	90%	90%

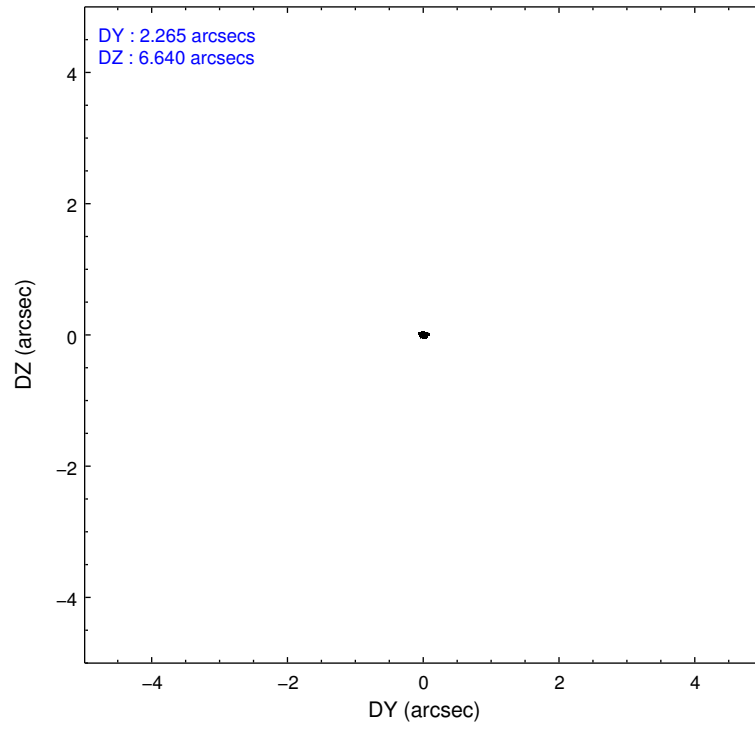
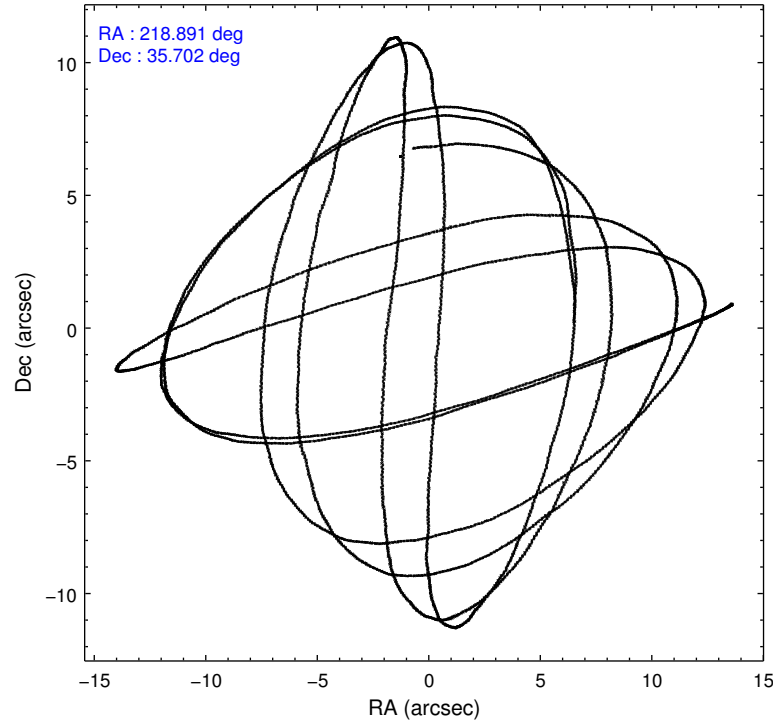
	ccd 0	ccd 1	ccd 2	ccd 3	ccd 6
grade 0 events	857	880	895	828	864
	3%	3%	3%	3%	3%
grade 1 events	11	11	9	15	7
	0%	0%	0%	0%	0%
grade 2 events	577	516	539	471	553
	2%	2%	2%	1%	2%
grade 3 events	287	308	261	294	245
	1%	1%	1%	1%	0%
grade 4 events	233	291	273	255	274
	1%	1%	1%	1%	1%
grade 5 events	671	805	617	806	785
	2%	3%	2%	3%	3%
grade 6 events	412	518	400	398	462
	1%	2%	1%	1%	1%
grade 7 events	19484	18788	21690	20646	22820
	86%	84%	87%	87%	87%

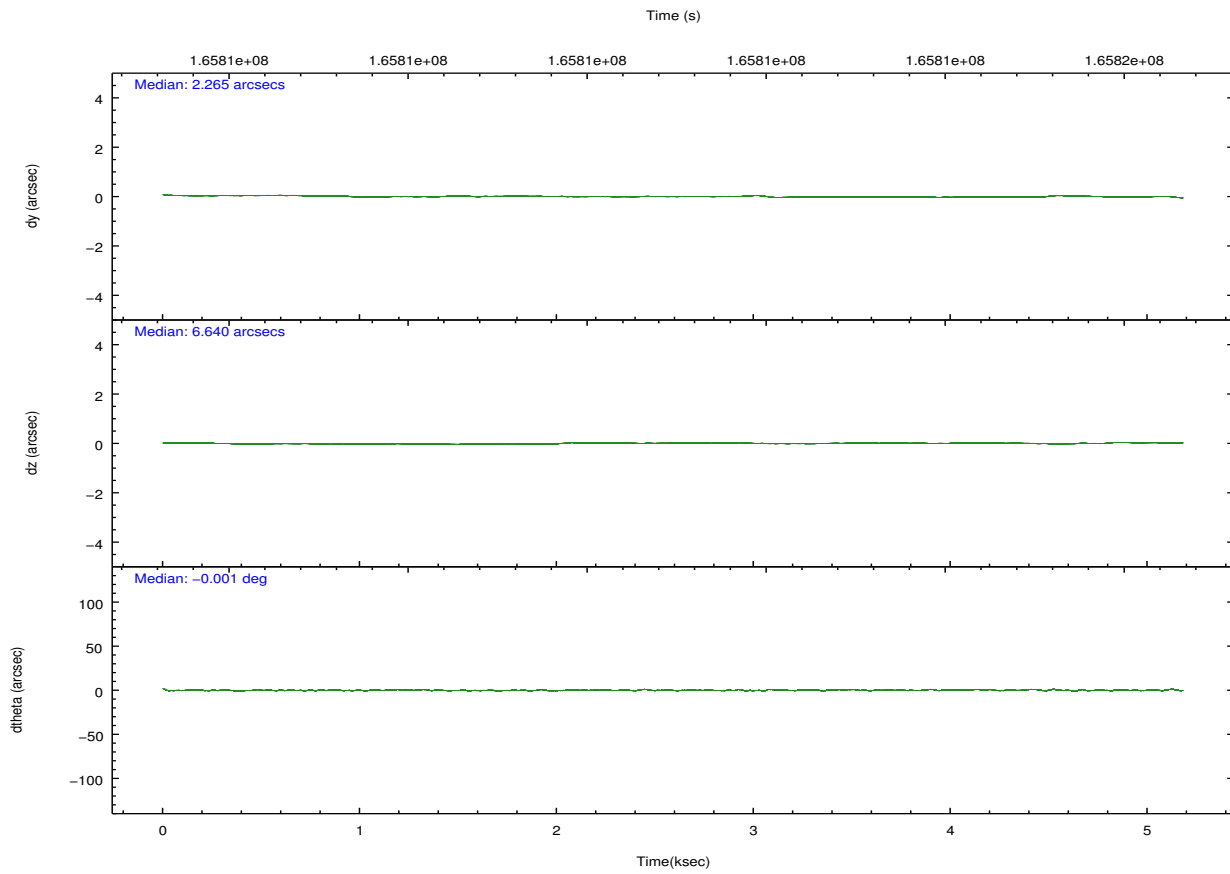
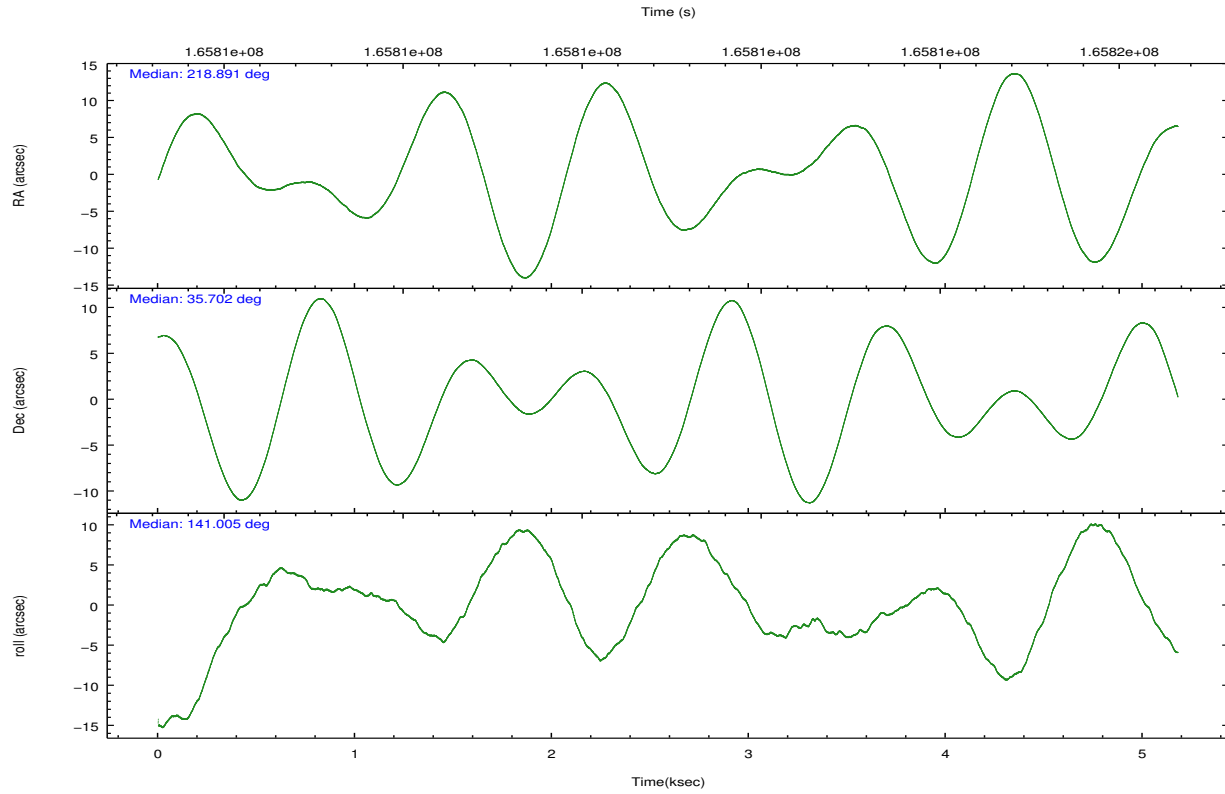


## 2.2 Compared Parameters

Parameter	Planned	Actual	Parameter	Planned	Actual
Instrument	ACIS	ACIS	Obspar format version number	7	7
Detector	ACIS-01236	ACIS-01236	Obspar file type	PREDICTED	ACTUAL
Grating	NONE	NONE	Obspar update status	NONE	UPDATED
Data mode	VFAINT	VFAINT	Number of optional ACIS chips dropped	0	0
Observation mode	POINTING	POINTING	On-chip summing requested	N	N
[deg] Pointing RA	218.924487	218.8912065785108	Subarray requested	NONE	NONE
[deg] Pointing Dec	35.697474	35.701679517904	Alternating exposures requested	N	N
[deg] Pointing Roll	140.782116	141.0102371539136	[s] Primary exposure time	0.000000	3.1
[mm] SIM focus pos	-0.782348	-0.7809083437167272			
[mm] SIM defocus	0	0.001439871863259334			
[mm] SIM translation stage pos	-233.592463	-233.5874344608287			
[mm] SIM translation stage offset	0	-0.005018542100998502			
[s] Observation start time (MET)	165810070.184000	165809694.38012			
Observation start date	2003-04-04T02:20:06	2003-04-04T02:14:54			
[s] Observation end time (MET)	165815070.184000	165815251.93035			
Observation end date	2003-04-04T03:43:26	2003-04-04T03:47:31			
Read mode	TIMED	TIMED			

## 2.3 Aspect



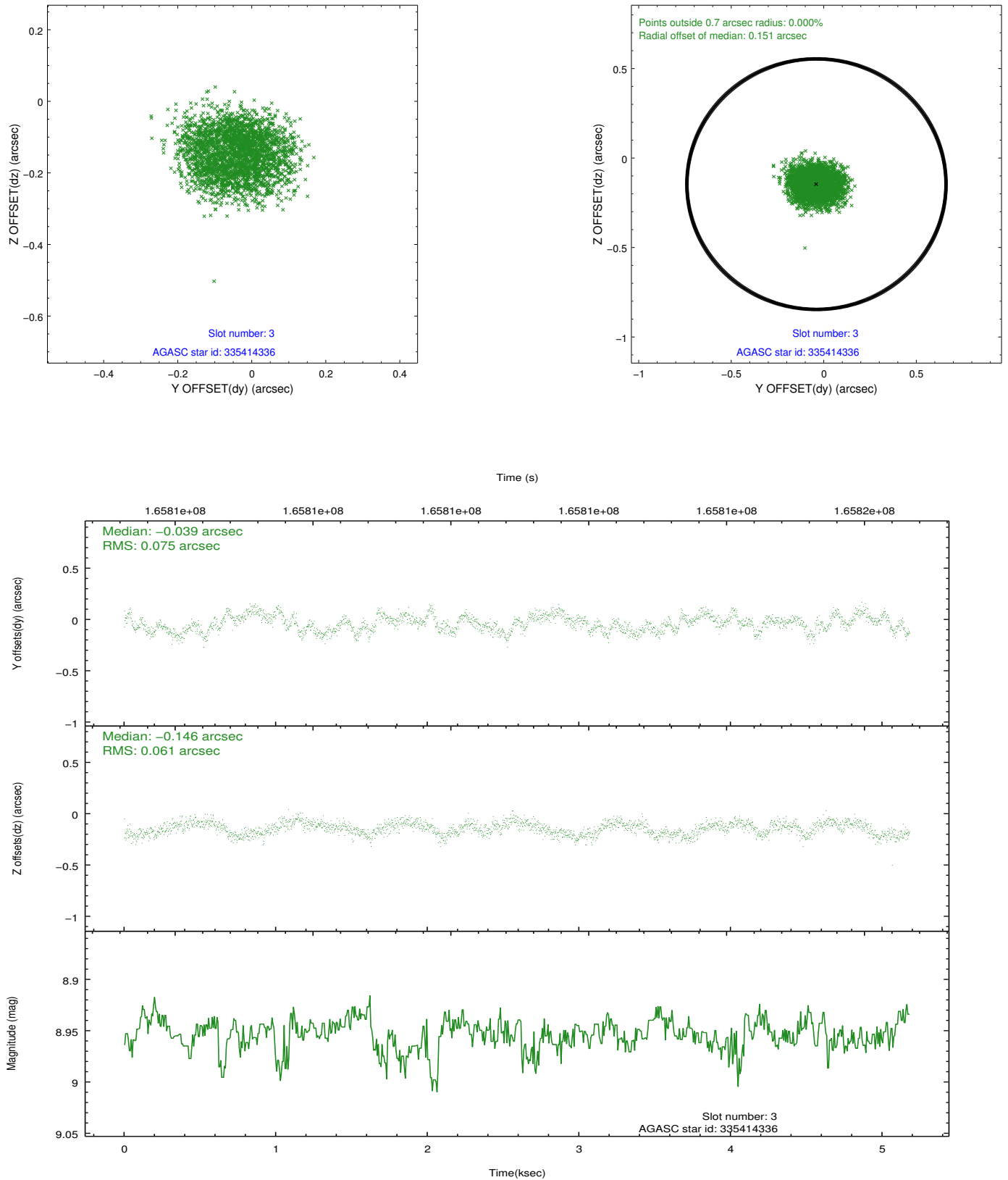


### Slot Statistics

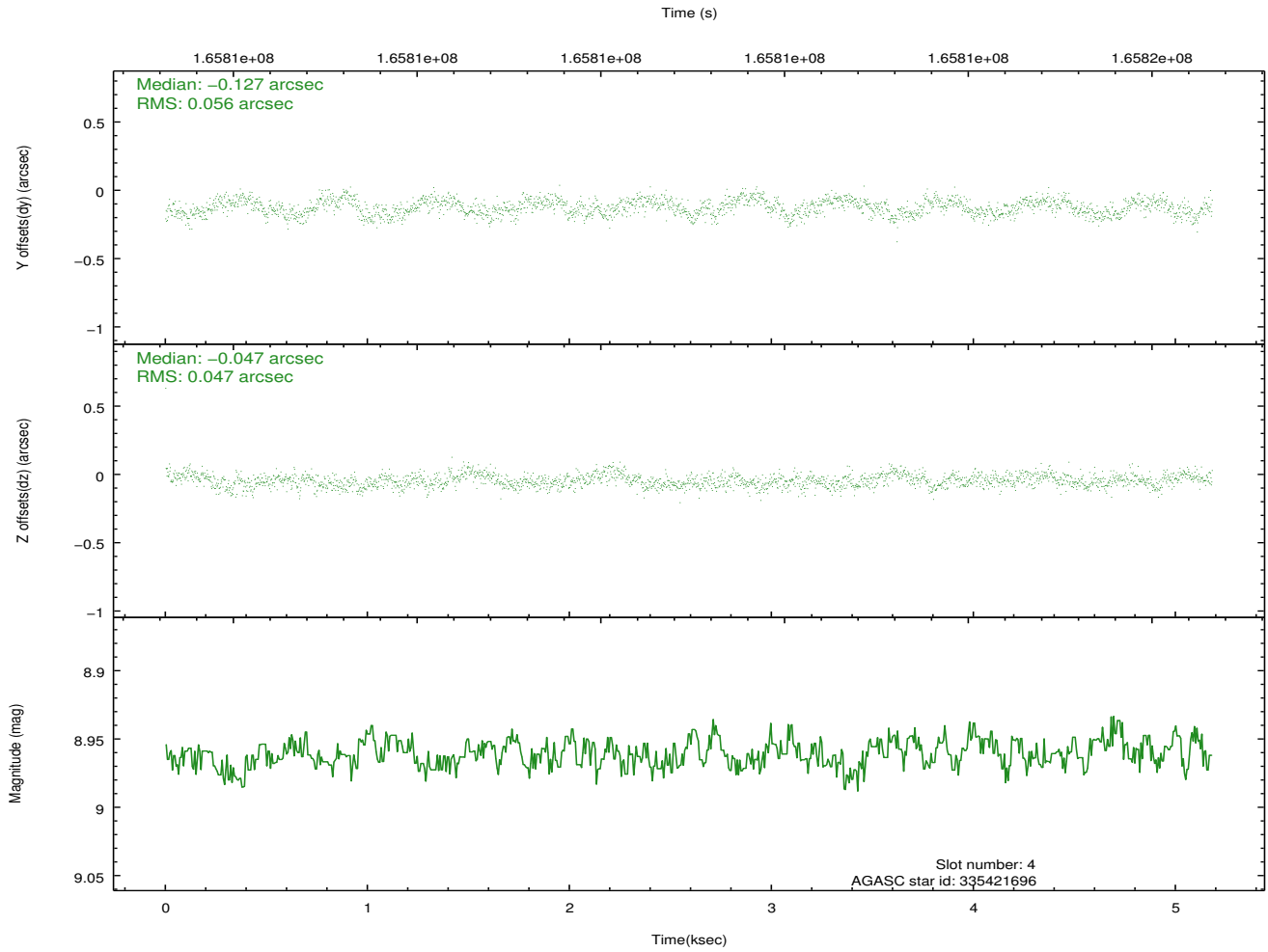
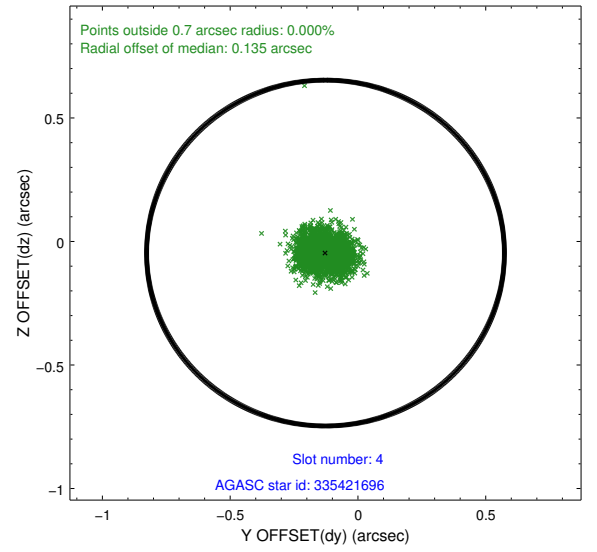
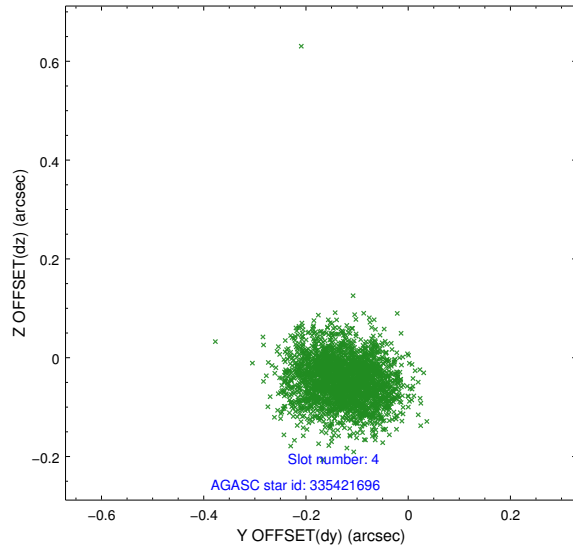
slot	status	id	mag	n_pts	med_dy	med_dz	dr1	dr2	ra	dec	mean_y	mean_z
0	FID	ACIS-I-1	7.25	1264	0.012	-0.005	0.006	0.011	0.000000	0.000000	937.54	-830.05
1	FID	ACIS-I-5	7.24	1264	-0.078	0.052	0.006	0.010	0.000000	0.000000	-1809.97	1066.98
2	FID	ACIS-I-6	7.26	1264	-0.025	0.024	0.006	0.011	0.000000	0.000000	401.84	1712.73
3	GUIDE	335414336	8.95	2528	-0.039	-0.146	0.104	0.158	218.979022	35.090910	-1505.13	1590.30
4	GUIDE	335421696	8.96	2526	-0.127	-0.047	0.077	0.121	218.045699	35.772449	2165.66	1406.09
5	GUIDE	335549864	7.51	2527	0.095	-0.128	0.069	0.113	219.286726	35.929745	-286.94	-1316.19
6	GUIDE	335553576	10.20	2520	0.055	0.152	0.141	0.238	219.666266	35.520346	-2081.69	-886.74
7	GUIDE	335554008	9.82	2520	0.021	0.167	0.105	0.169	219.383422	35.471863	-1554.62	-223.85

## 2.4 Star Slots

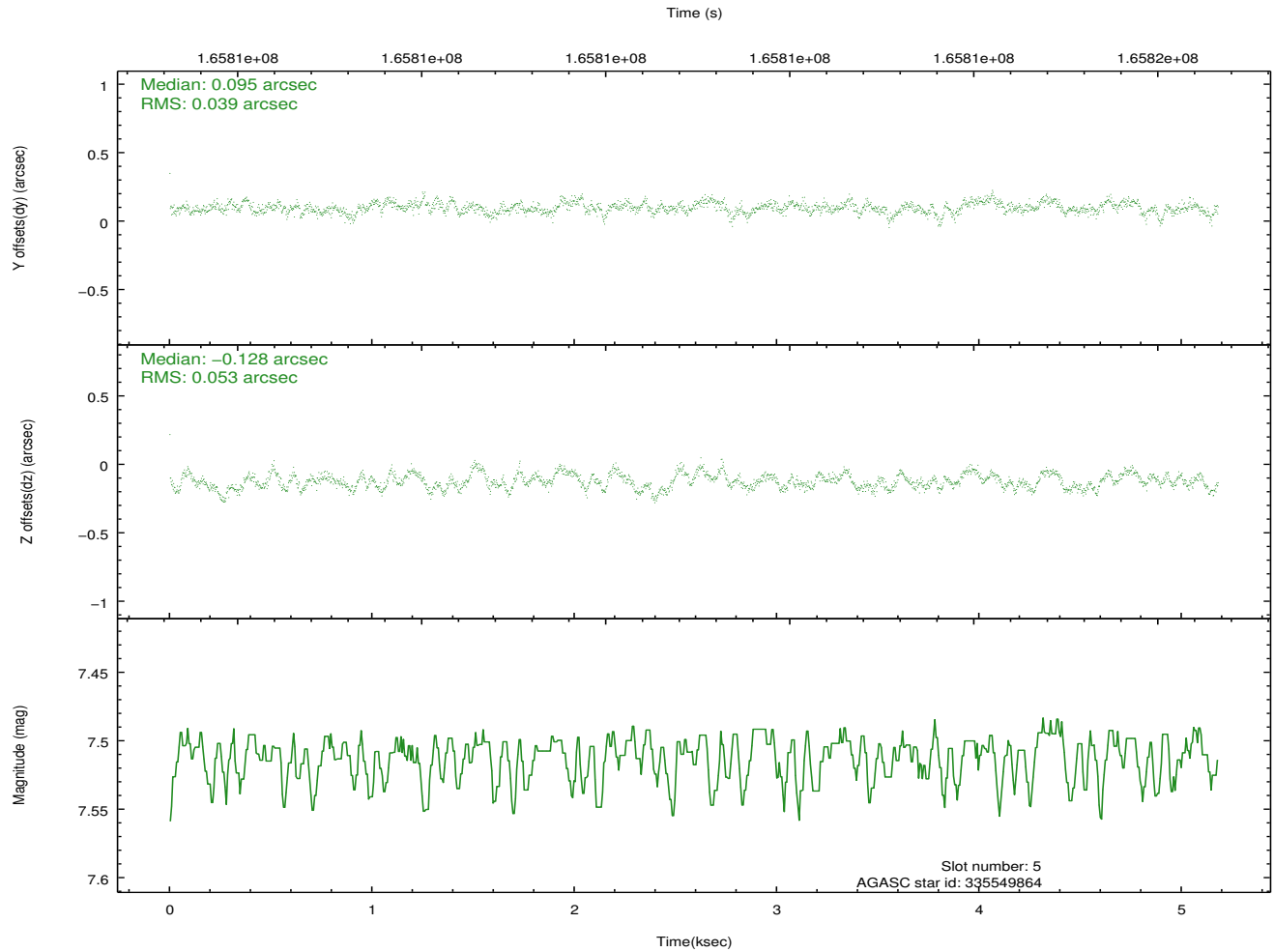
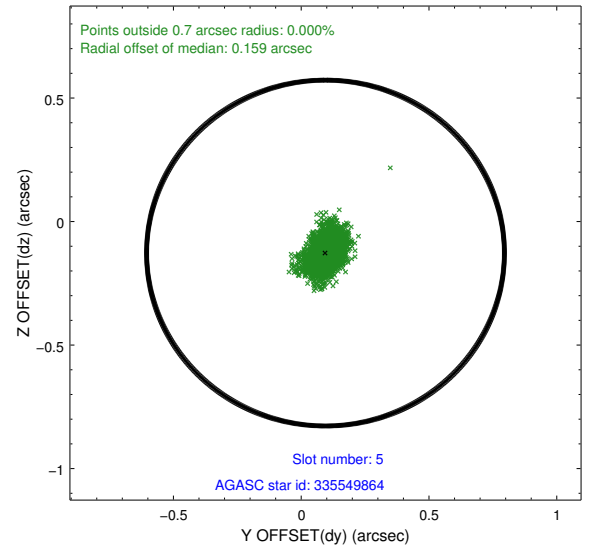
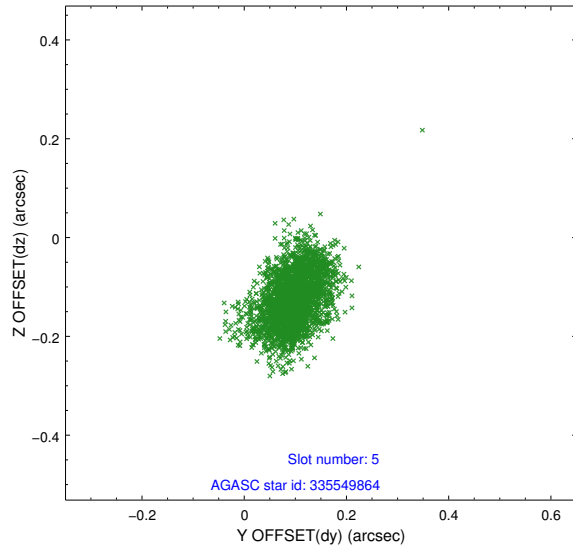
### 2.4.1 Slot 3



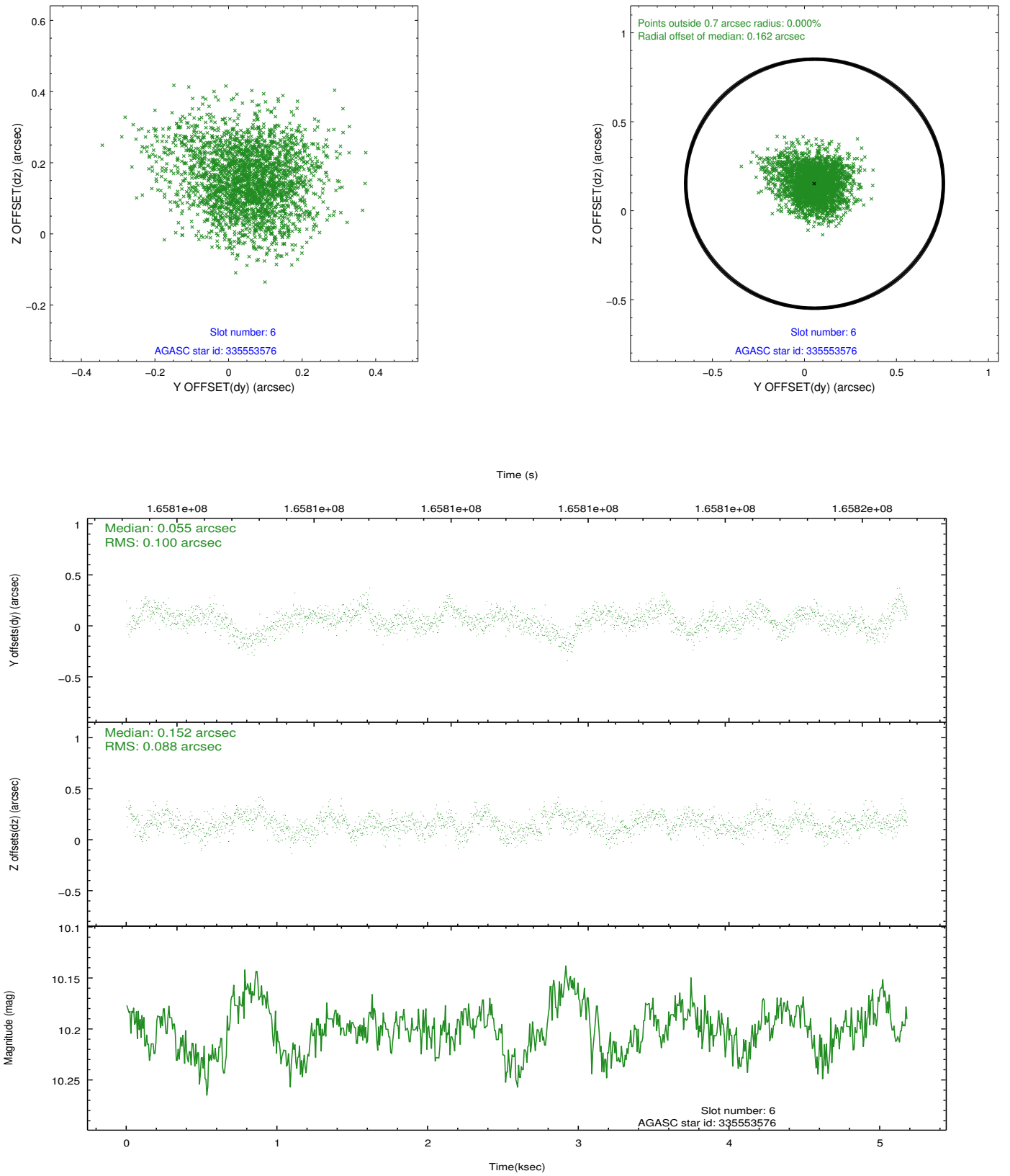
## 2.4.2 Slot 4



### 2.4.3 Slot 5

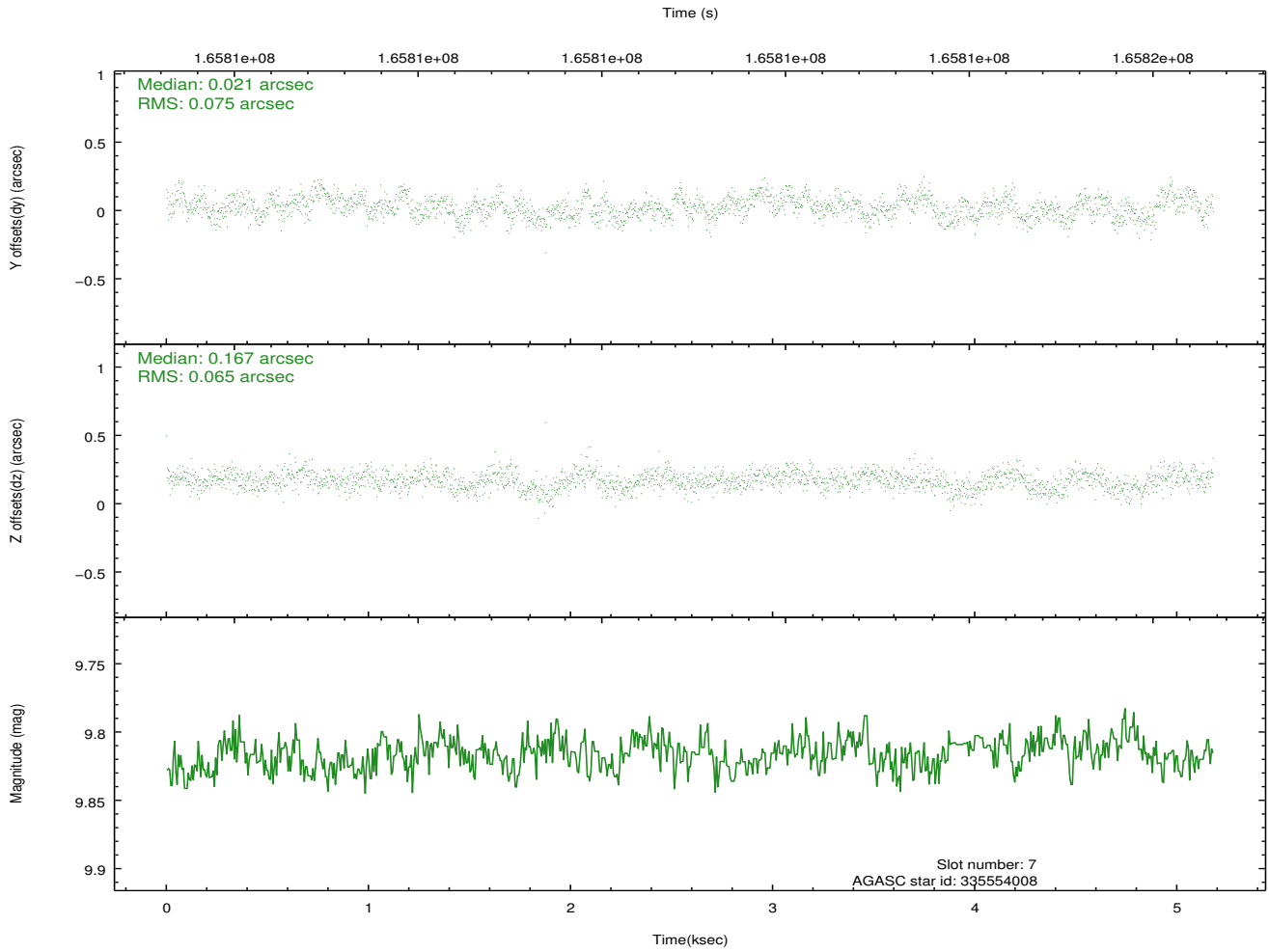
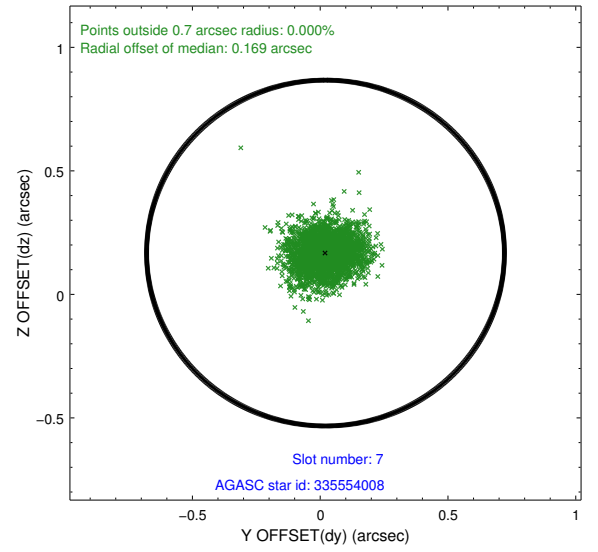
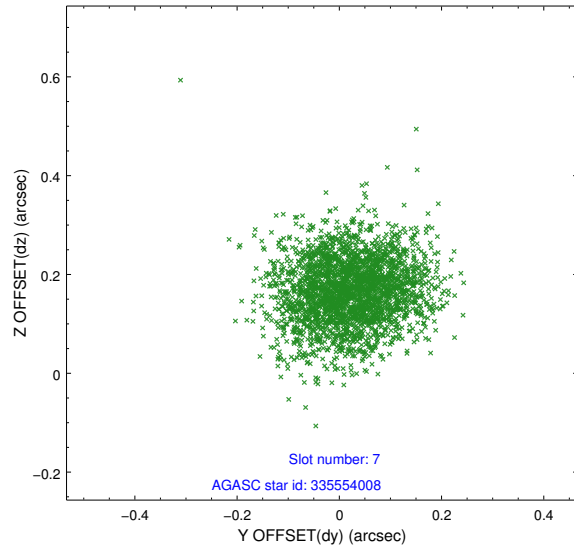


## 2.4.4 Slot 6



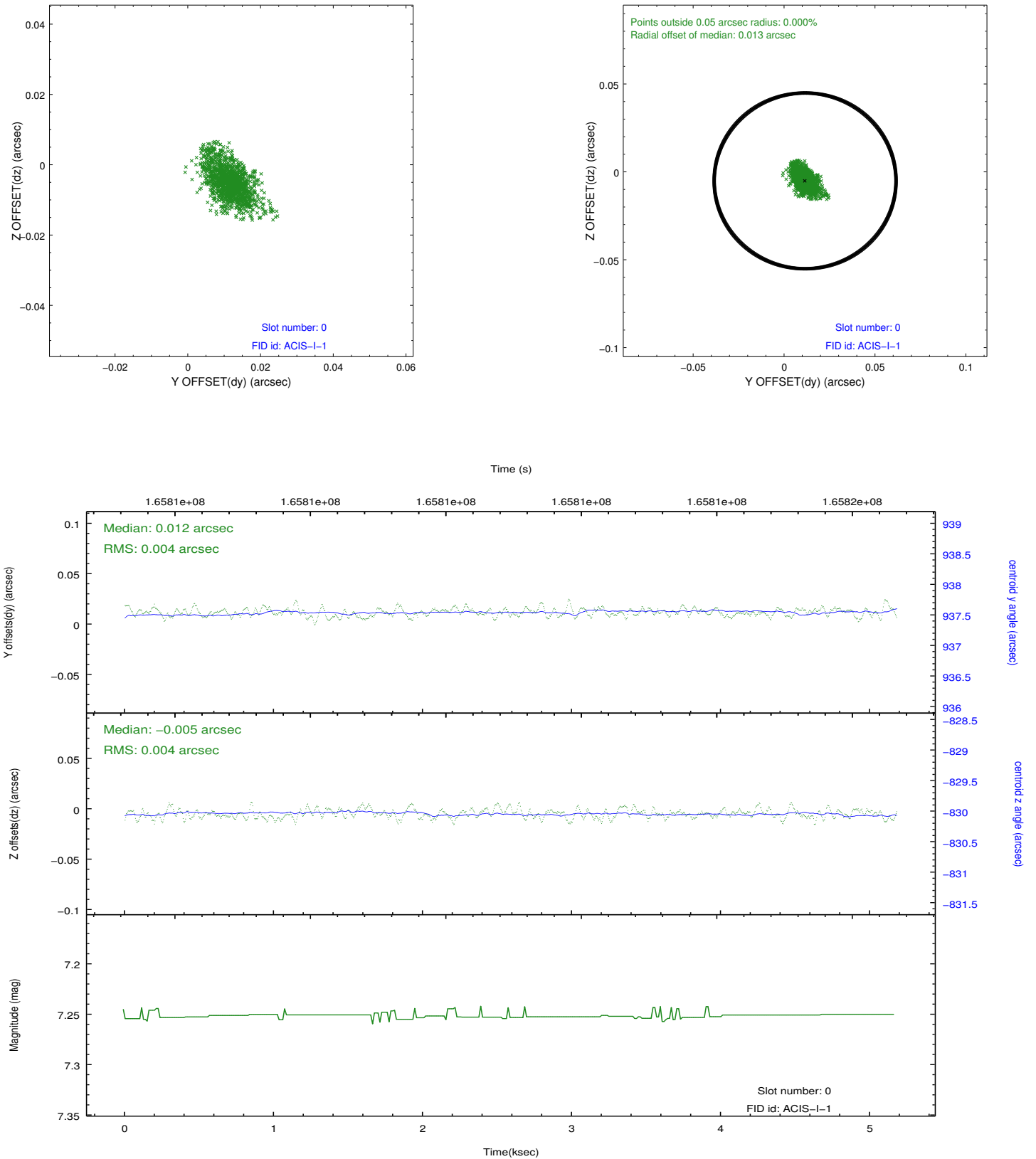


## 2.4.5 Slot 7

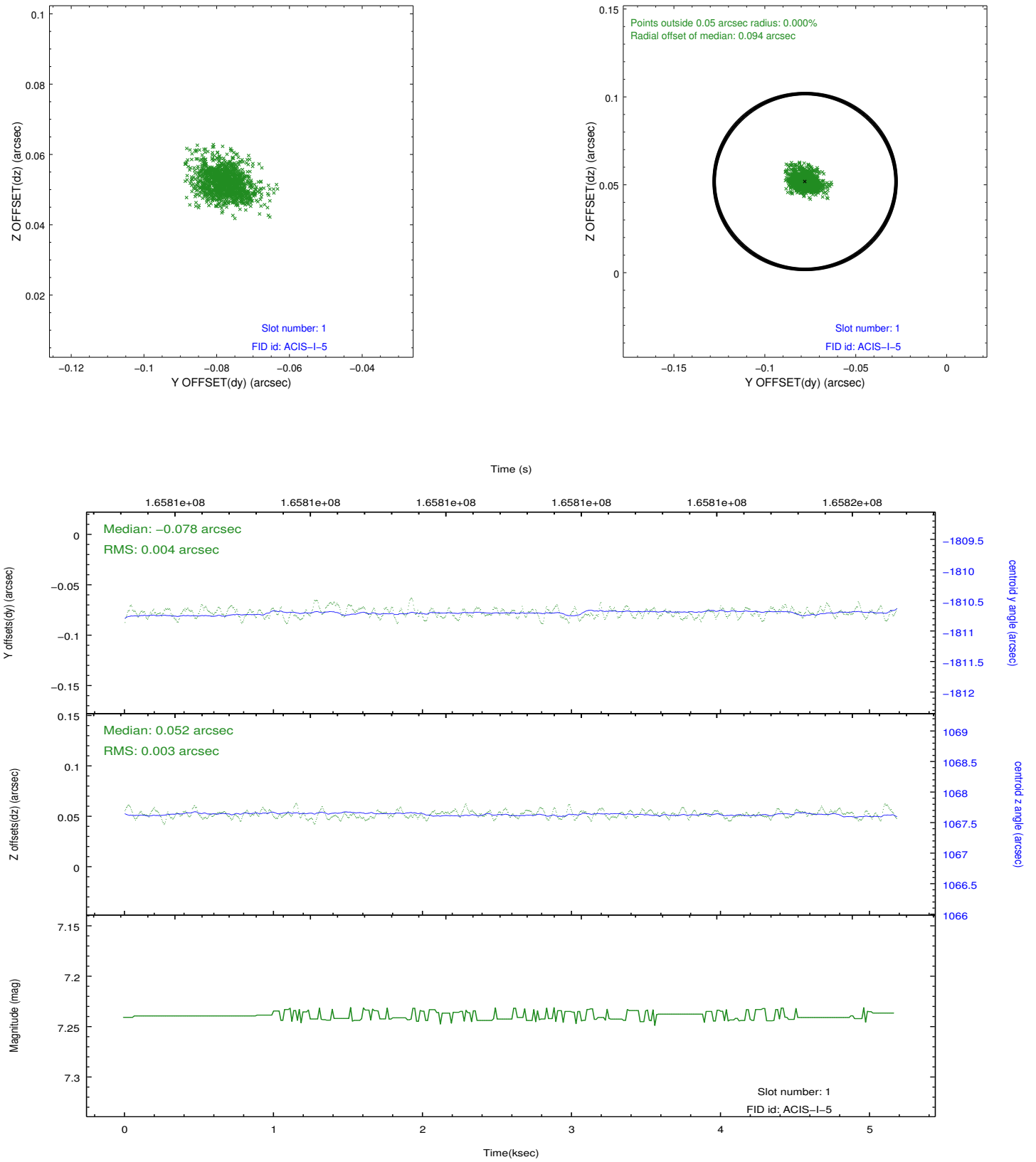


## 2.5 FID Slots

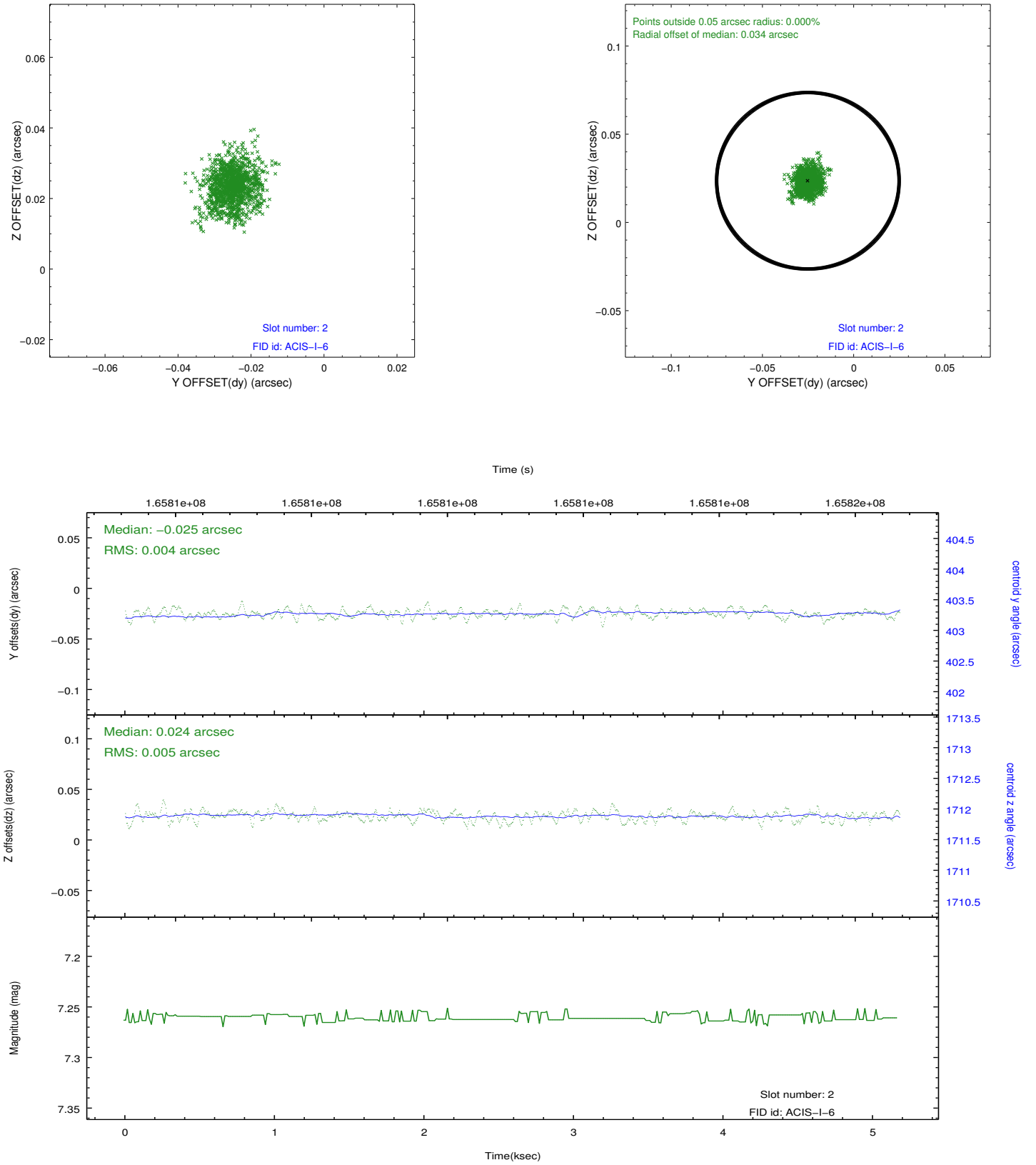
### 2.5.1 Slot 0



## 2.5.2 Slot 1



### 2.5.3 Slot 2



## **A Summary**

### **A.1 Status**

V&V Scientist	Jen Lauer
V&V Date (YYYY-MM-DD)	2012.11.13
V&V Edition	1
V&V Disposition and Status	OK
V&V Charge Time	4.777

### **A.2 Comments**