

V&V Reference Report

L2 ASCDS Version : 7.6.8

Observation 3598 - L2 Version 001
Chandra X-Ray Center

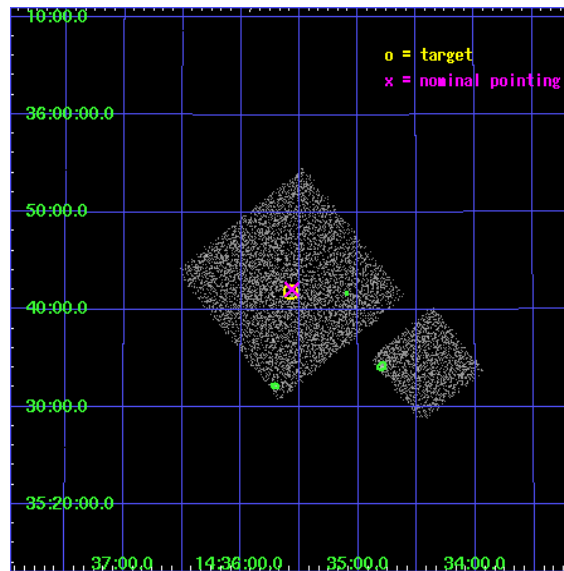
L2 Processing Date : Jul 30 2006

Contents

1	Front	2
2	OBI	3
2.1	OBI	3
2.1.1	Images	3
2.1.2	Bias	3
2.1.3	Parameters	4
2.1.4	Events	4
2.2	Compared Parameters	5
2.3	Aspect	6
2.4	Star Slots	9
2.4.1	Slot 3	9
2.4.2	Slot 4	10
2.4.3	Slot 5	11
2.4.4	Slot 6	12
2.4.5	Slot 7	13
2.5	FID Slots	14
2.5.1	Slot 0	14
2.5.2	Slot 1	15
2.5.3	Slot 2	16
3	Point Sources	17
A	Summary	18
A.1	Status	18
A.2	Comments	18

1 Front

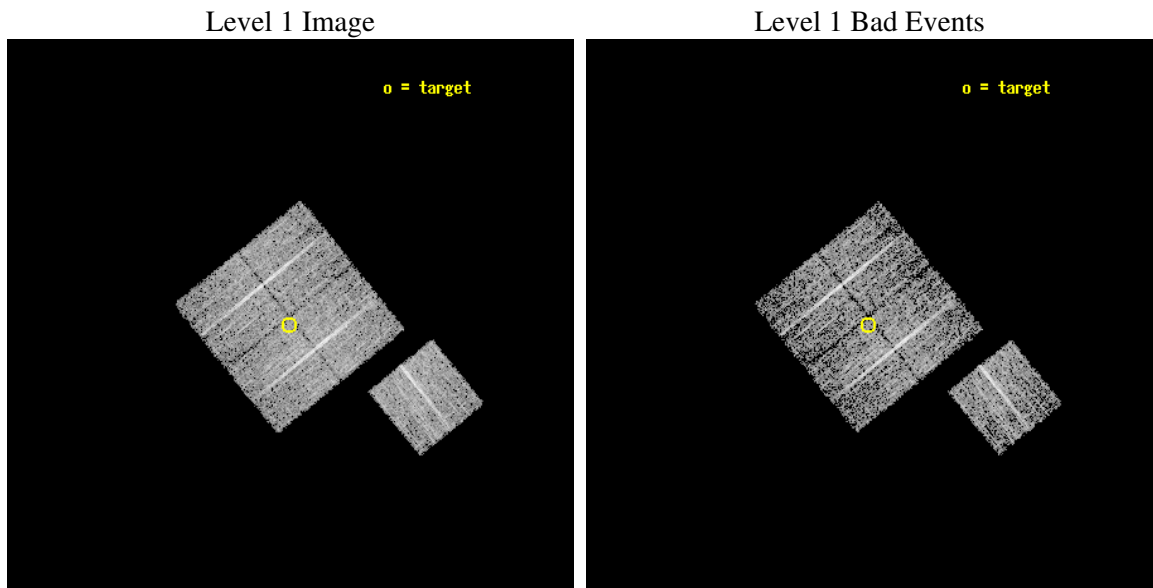
seq_num	900198
obs_id	3598
title	CHANDRA LARGE SCALE SURVEY OF THE NOAO BOOTES DEEP FIELD
observer	Dr. Stephen Murray
object	NOAO FIELD F34
dtcycle	0
cycle	P
ra_targ	218.893848
dec_targ	35.697552
ra_nom	218.89120660925
dec_nom	35.701679475208
roll_nom	141.01023713219
revision	2
ontime	4777.0999908149
livetime	4714.6836625851
ontime0	4777.0999908149
ontime1	4777.0999908149
ontime2	4777.0999908149
ontime3	4777.0999908149
ontime6	4777.0999908149
l2events	9622



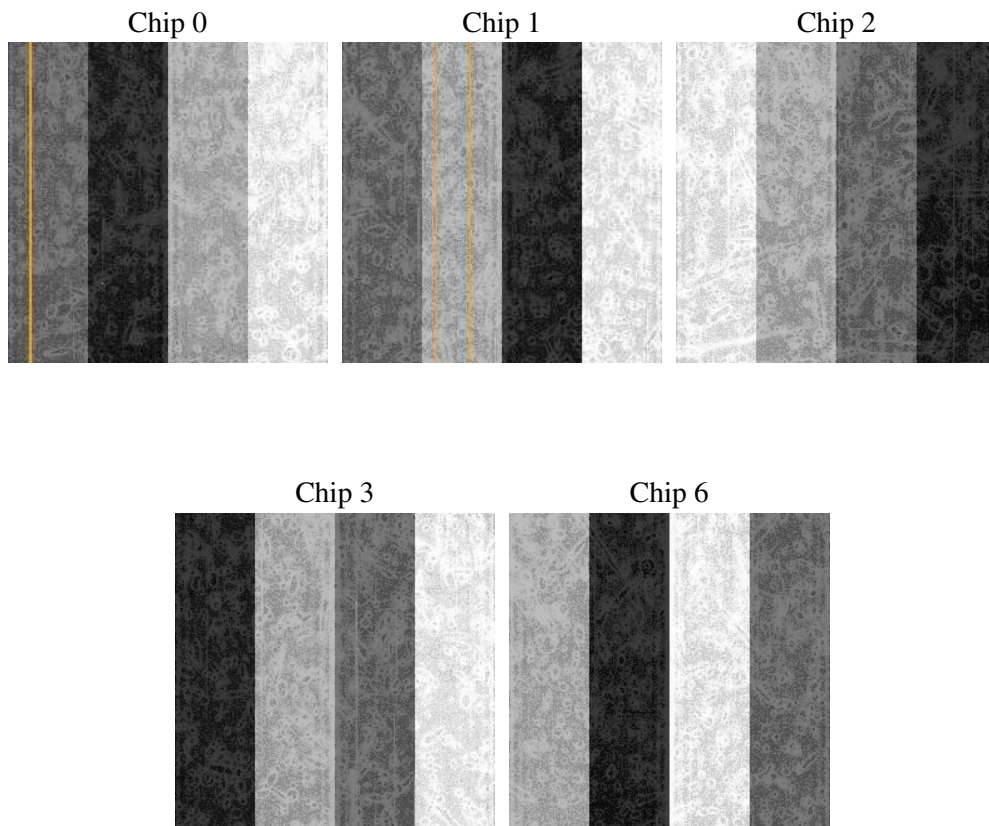
2 OBI

2.1 OBI

2.1.1 Images



2.1.2 Bias



2.1.3 Parameters

obi_num	1
ascdsver	7.6.8
caldsver	3.2.2
date	2006-07-30T02:22:05
revision	2

sched_exp_time	5000.000000
ontime	4780.6126216948
ontime0	4780.6126216948
ontime1	4780.6126216948
ontime2	4780.6126216948
ontime3	4780.6126216948
ontime6	4780.6126216948
l1events	119056

2.1.4 Events

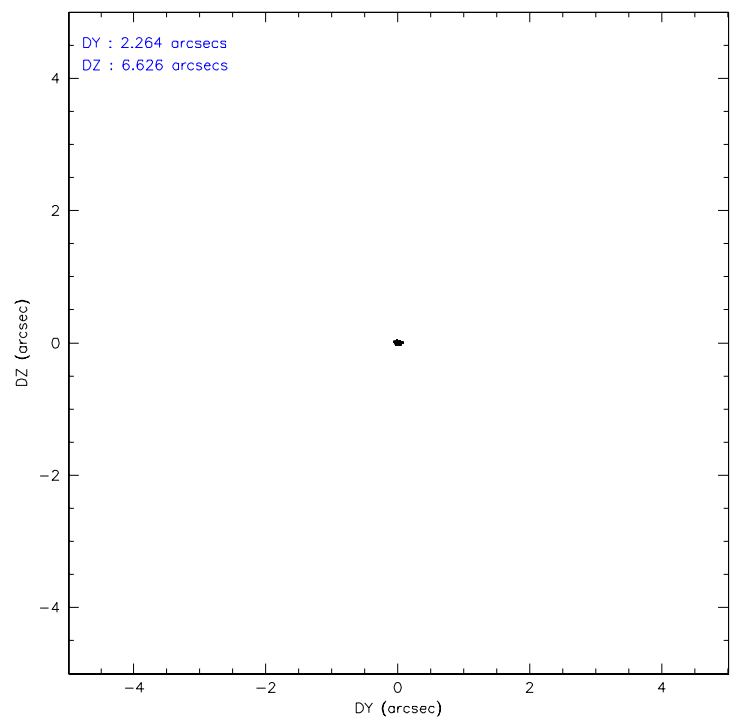
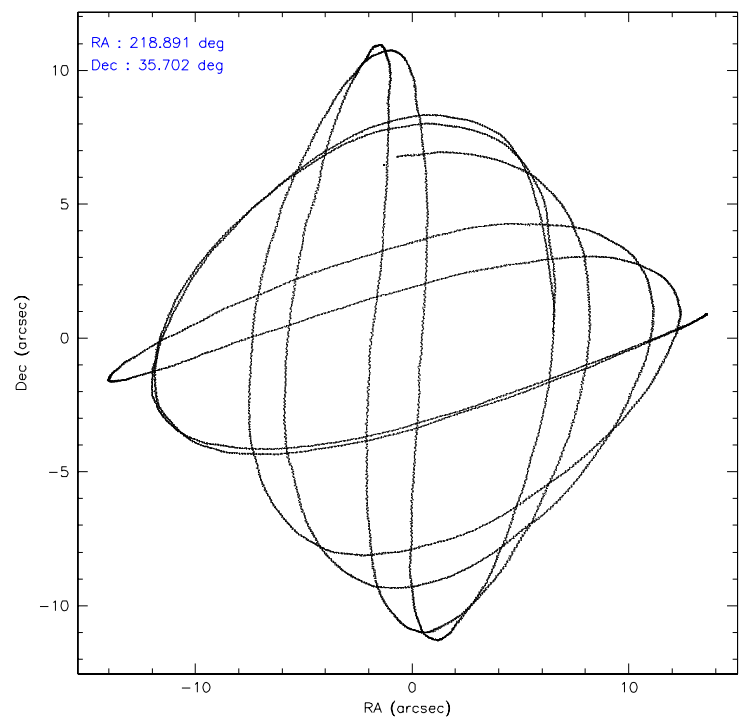
	ccd 0	ccd 1	ccd 2	ccd 3	ccd 6
level 1 events	22532	22117	24684	23713	26010
rejected events	20168	19604	22319	21468	23613
rejected %	89%	88%	90%	90%	90%

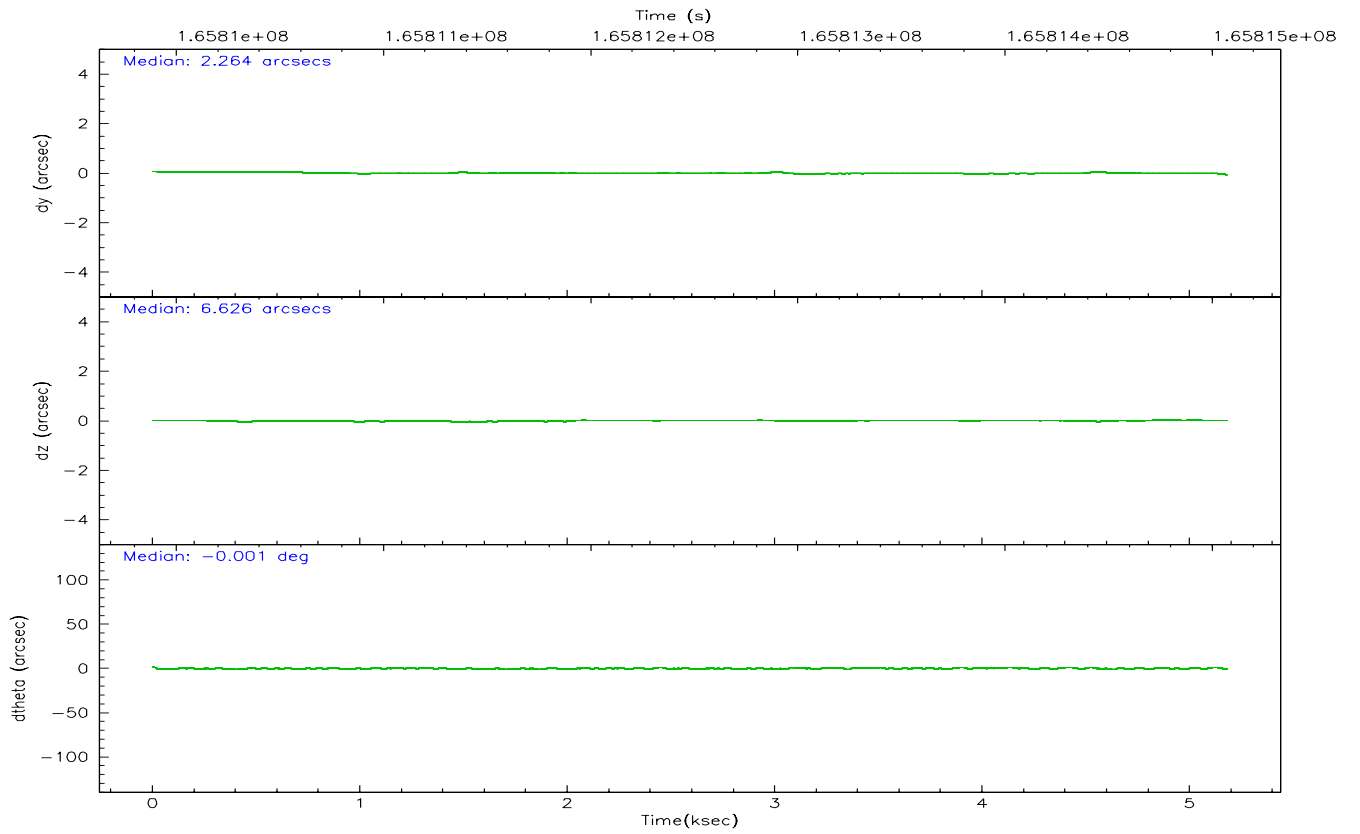
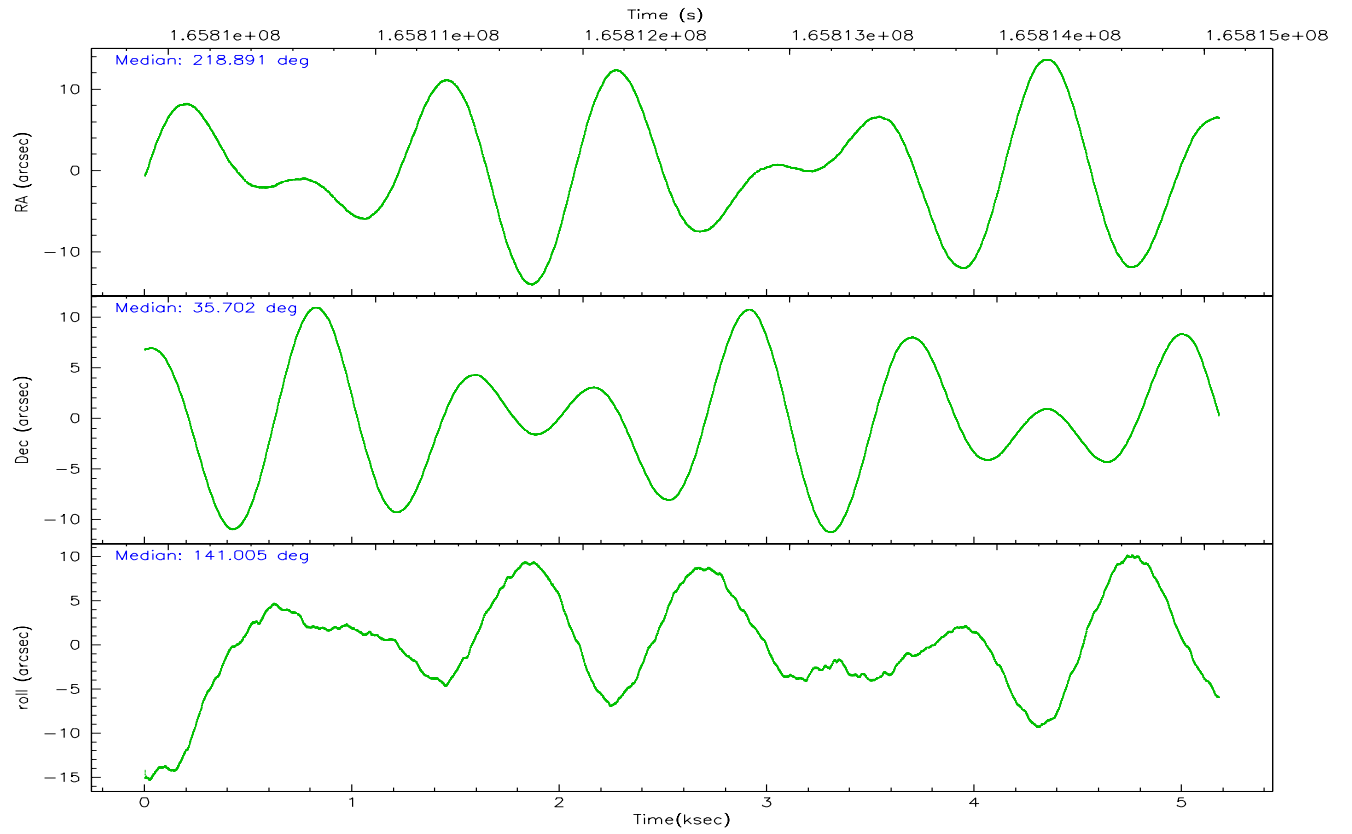
	ccd 0	ccd 1	ccd 2	ccd 3	ccd 6
grade 0 events	856	880	895	828	864
	3%	3%	3%	3%	3%
grade 1 events	11	11	9	15	7
	0%	0%	0%	0%	0%
grade 2 events	578	516	539	471	553
	2%	2%	2%	1%	2%
grade 3 events	287	308	261	294	245
	1%	1%	1%	1%	0%
grade 4 events	233	291	273	255	274
	1%	1%	1%	1%	1%
grade 5 events	671	805	617	806	785
	2%	3%	2%	3%	3%
grade 6 events	412	518	399	398	462
	1%	2%	1%	1%	1%
grade 7 events	19484	18788	21691	20646	22820
	86%	84%	87%	87%	87%

2.2 Compared Parameters

Parameter	Planned	Actual	Parameter	Planned	Actual
Instrument	ACIS	ACIS	Obspar format version number	6	6
Detector	ACIS-01236	ACIS-01236	Obspar file type	PREDICTED	ACTUAL
Grating	NONE	NONE	Obspar update status	NONE	UPDATED
Data mode	VFAINT	VFAINT	On-chip summing requested	N	N
Observation mode	POINTING	POINTING	Subarray requested	NONE	NONE
Pointing RA	218.924487	218.8912066092501	Alternating exposures requested	N	N
Pointing Dec	35.697474	35.70167947520757	Primary exposure time	0.000000	3.1
Pointing Roll	140.782116	141.010237132189			
SIM focus pos (mm)	-0.782348	-0.7809083437167272			
SIM defocus (mm)	0	0.001439871863259334			
SIM translation stage pos (mm)	-233.592463	-233.5874344608287			
SIM translation stage offset (mm)	0	-0.005018542100998502			
Observation start time	165810070.184000	165809694.38012			
Observation start date	2003-04-04T02:20:06	2003-04-04T02:14:54			
Observation end time	165815070.184000	165815251.93035			
Observation end date	2003-04-04T03:43:26	2003-04-04T03:47:31			
Read mode	TIMED	TIMED			

2.3 Aspect



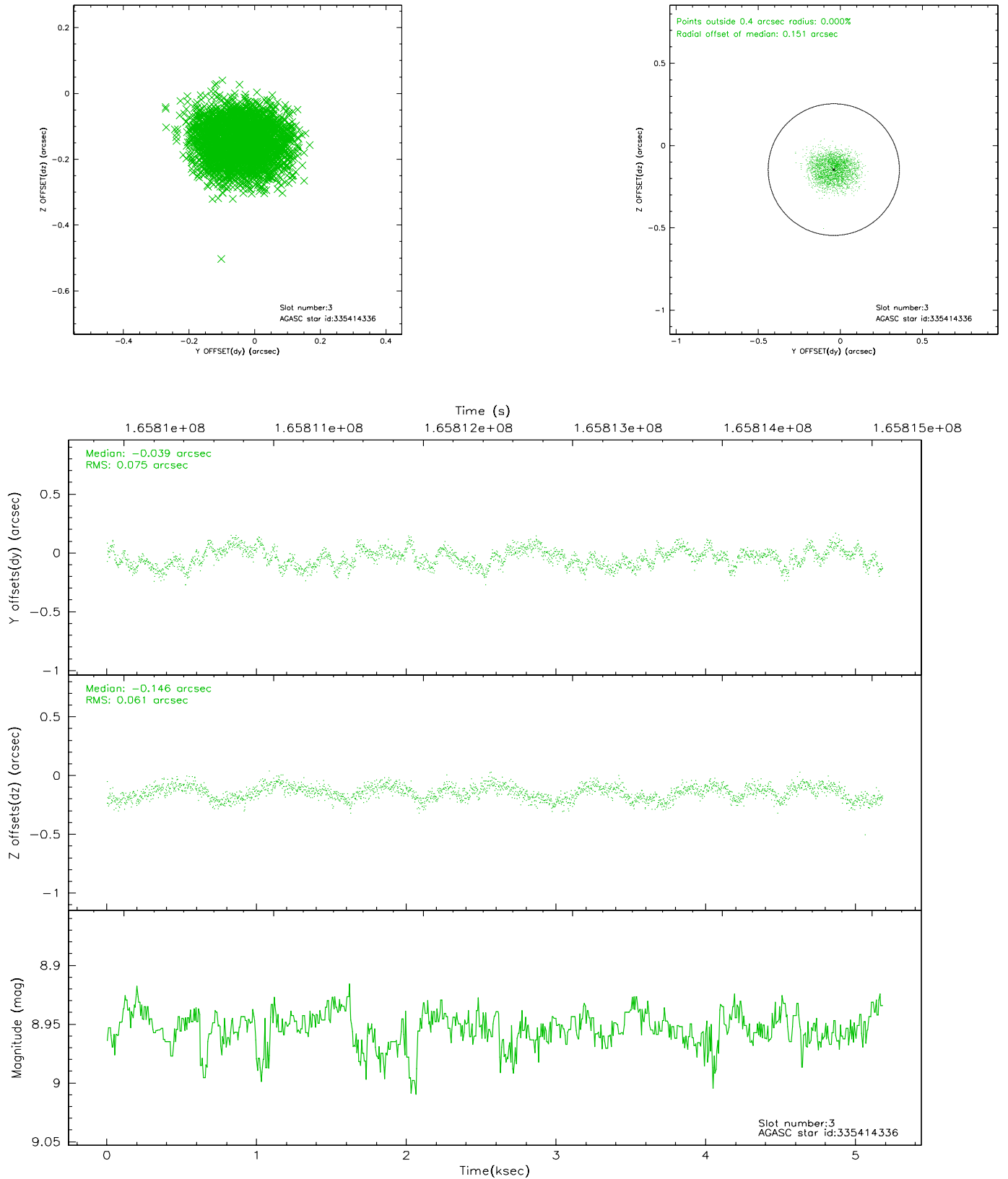


Slot Statistics

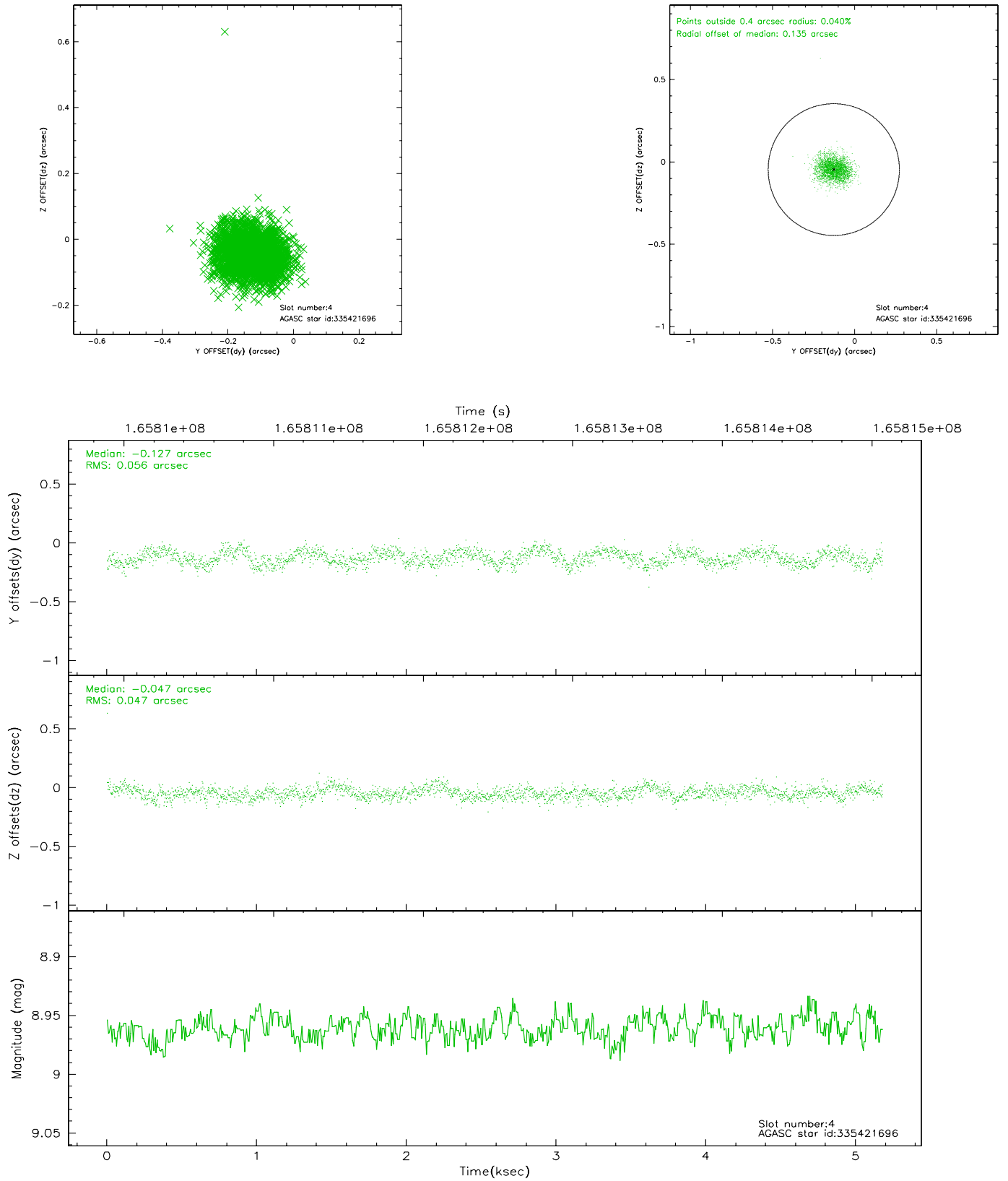
slot	status	id	mag	n_pts	med_dy	med_dz	dr1	dr2	ra	dec	mean_y	mean_z
0	FID	ACIS-I-1	7.25	1264	-0.009	0.022	0.006	0.010	0.000000	0.000000	937.52	-830.01
1	FID	ACIS-I-5	7.24	1264	-0.047	0.044	0.006	0.009	0.000000	0.000000	-1809.93	1066.98
2	FID	ACIS-I-6	7.26	1264	-0.035	0.004	0.006	0.010	0.000000	0.000000	401.83	1712.72
3	GUIDE	335414336	8.95	2528	-0.039	-0.146	0.104	0.158	218.979022	35.090910	-1505.13	1590.30
4	GUIDE	335421696	8.96	2526	-0.127	-0.047	0.077	0.121	218.045699	35.772449	2165.66	1406.09
5	GUIDE	335549864	7.51	2527	0.095	-0.128	0.069	0.113	219.286726	35.929745	-286.94	-1316.19
6	GUIDE	335553576	10.20	2520	0.055	0.152	0.141	0.238	219.666266	35.520346	-2081.69	-886.74
7	GUIDE	335554008	9.82	2520	0.021	0.167	0.105	0.169	219.383422	35.471863	-1554.62	-223.85

2.4 Star Slots

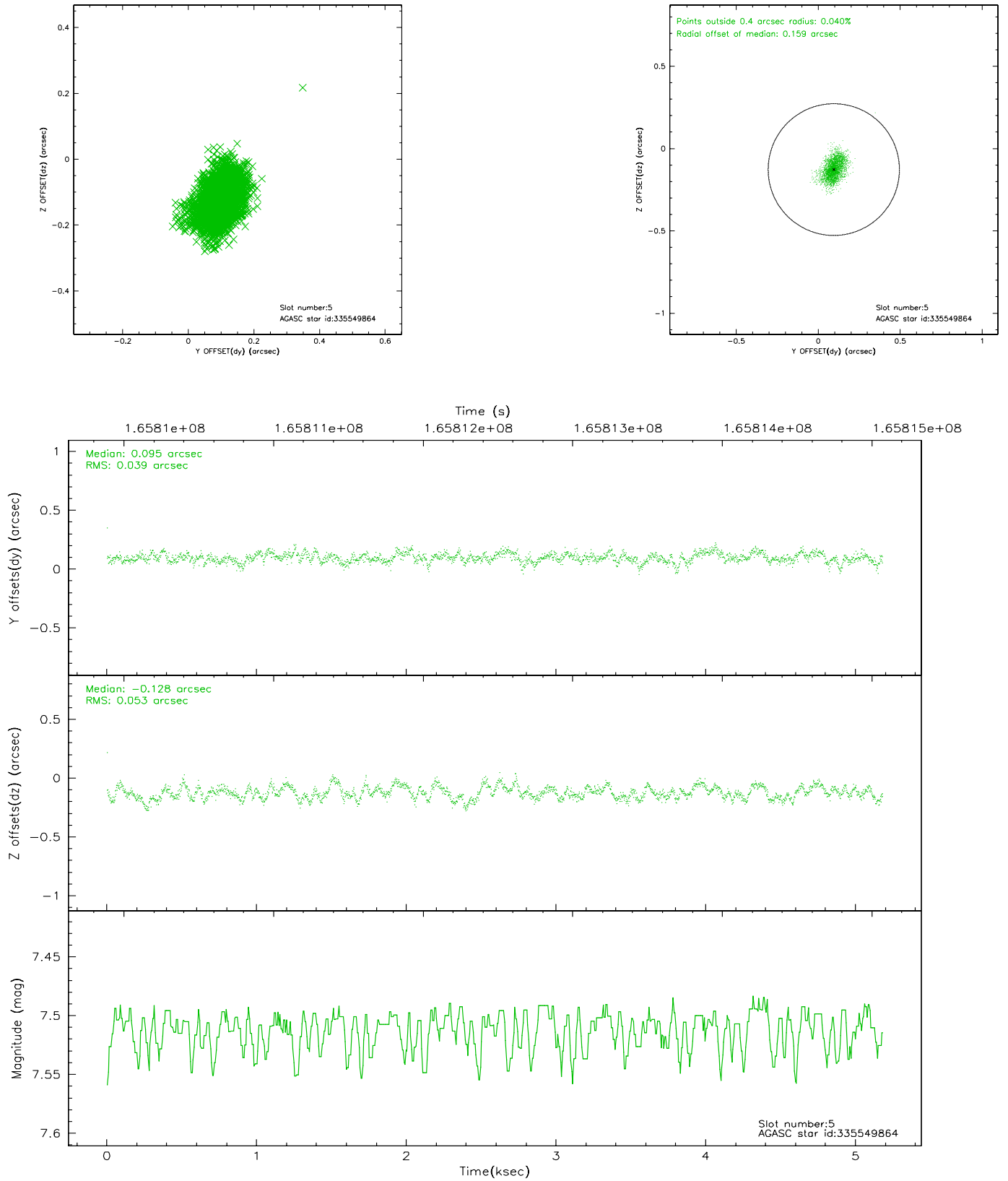
2.4.1 Slot 3



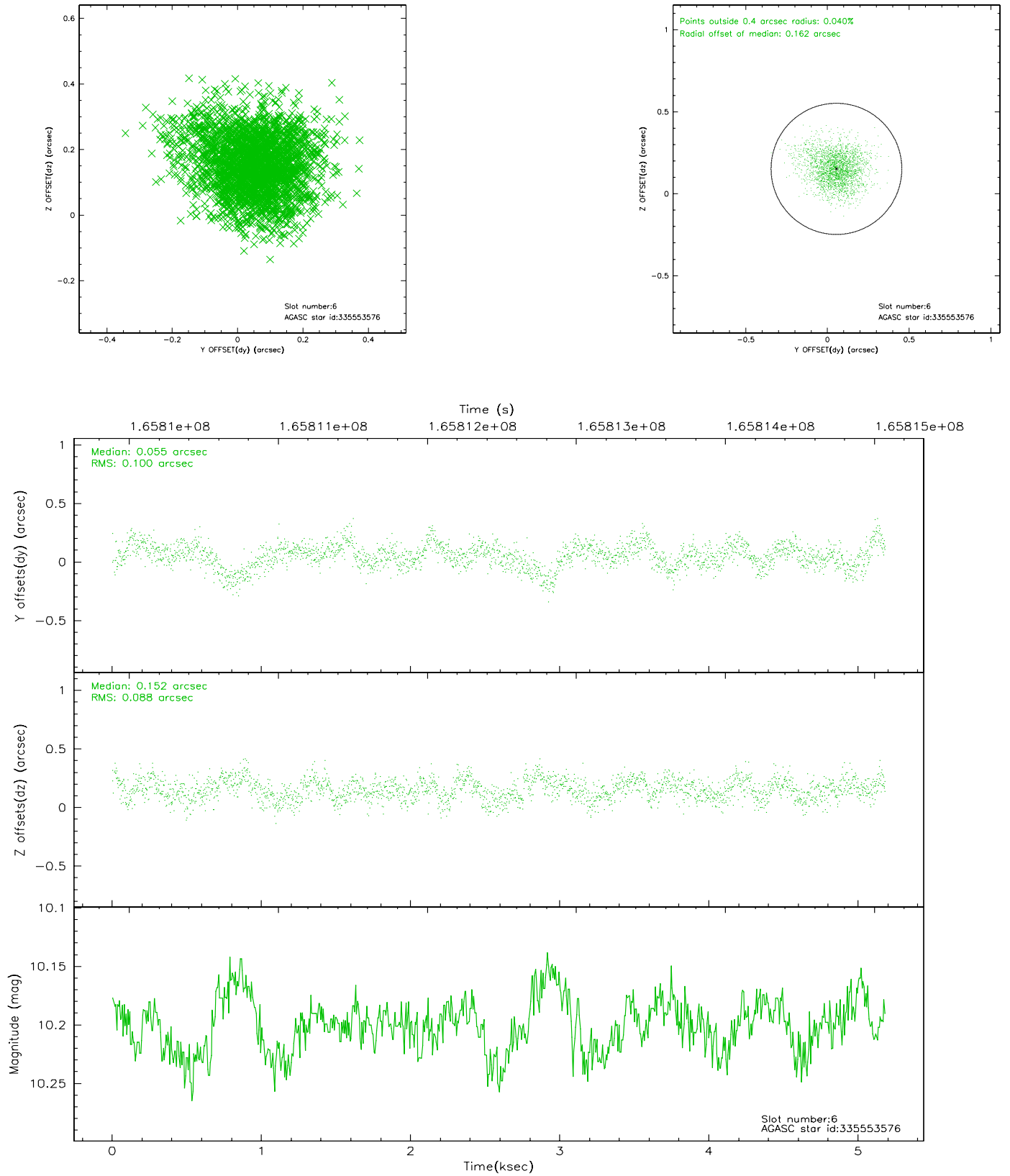
2.4.2 Slot 4



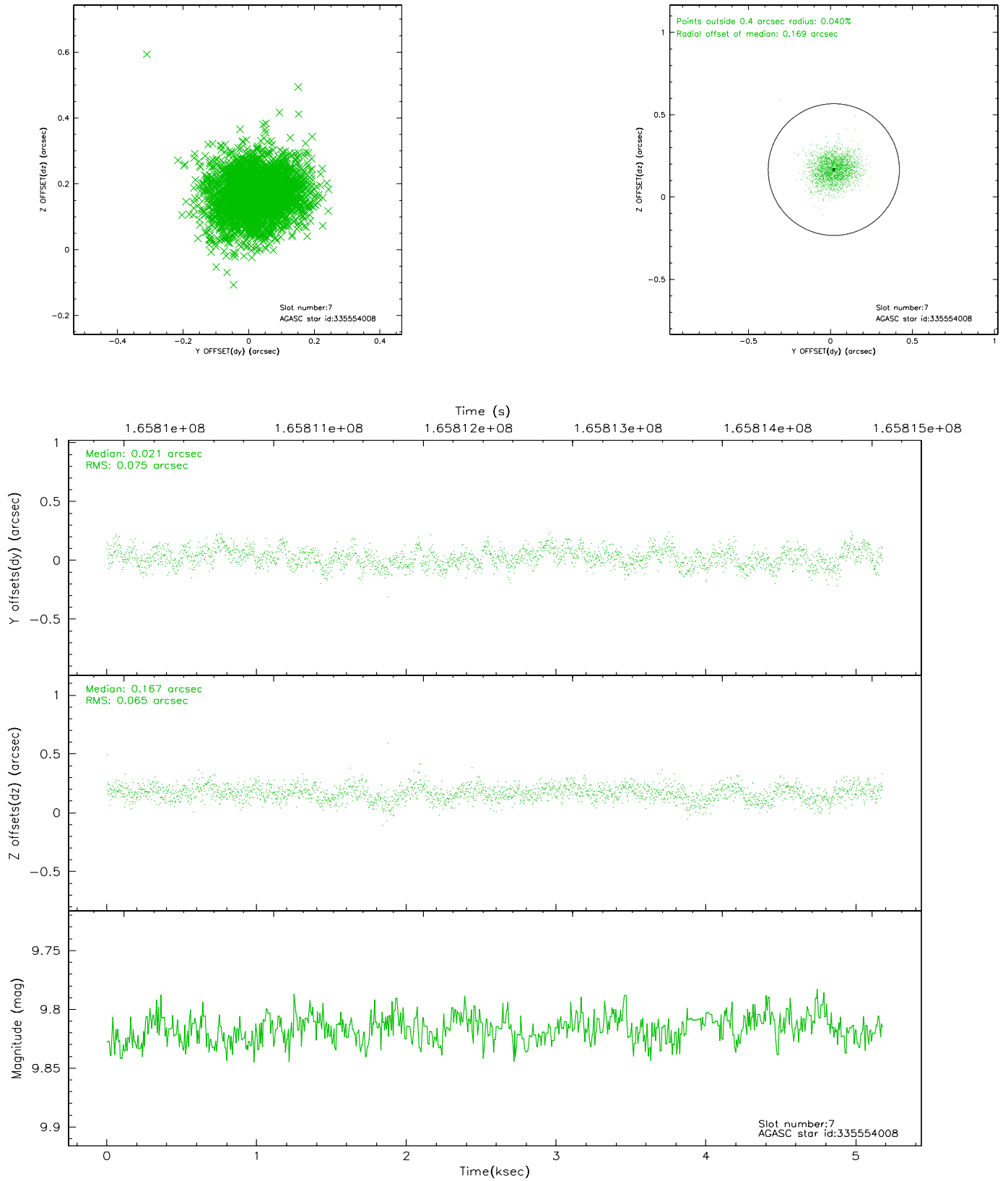
2.4.3 Slot 5



2.4.4 Slot 6

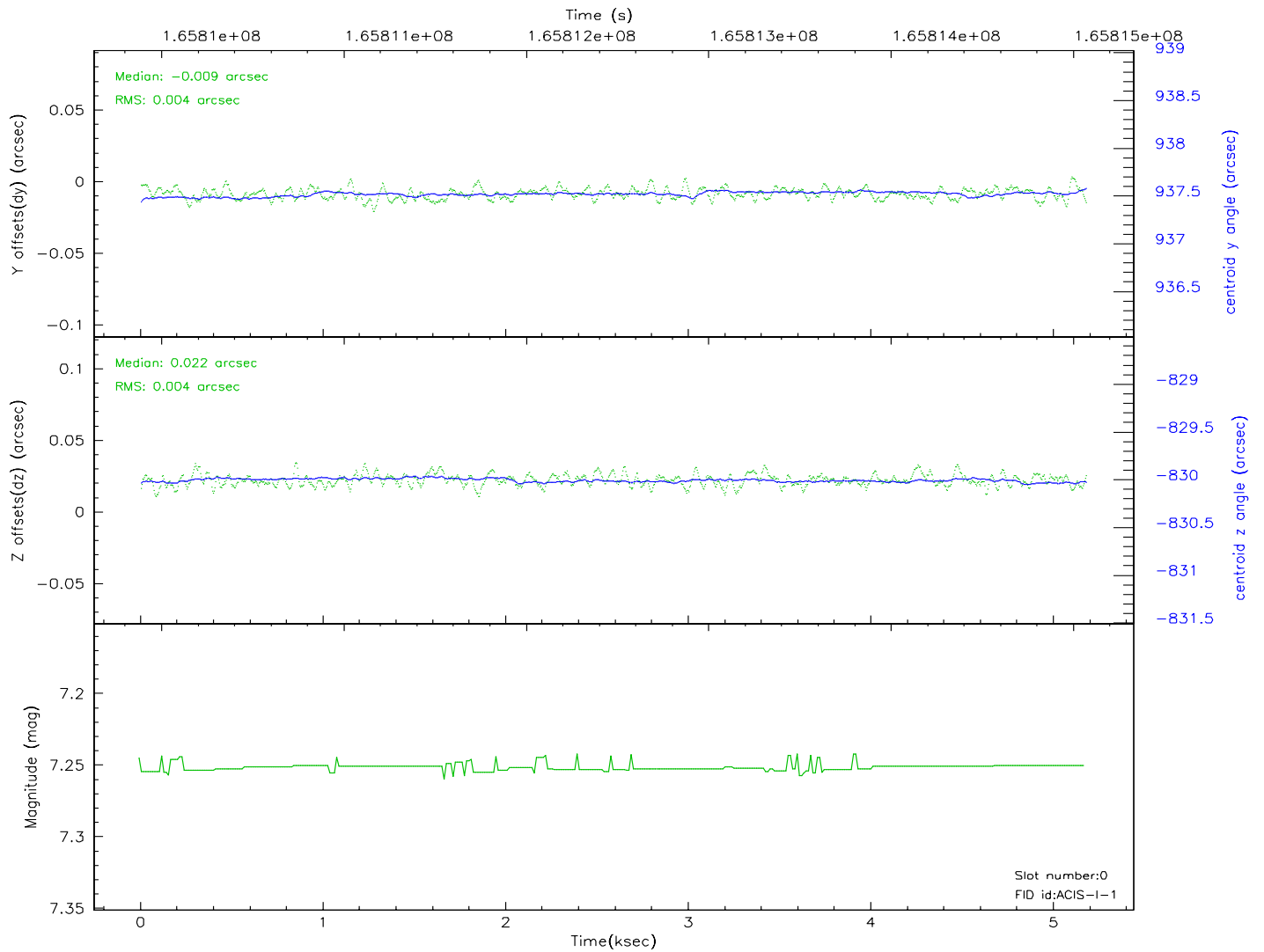
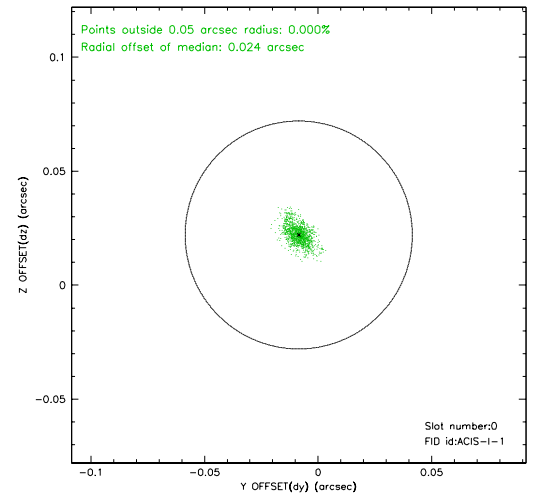
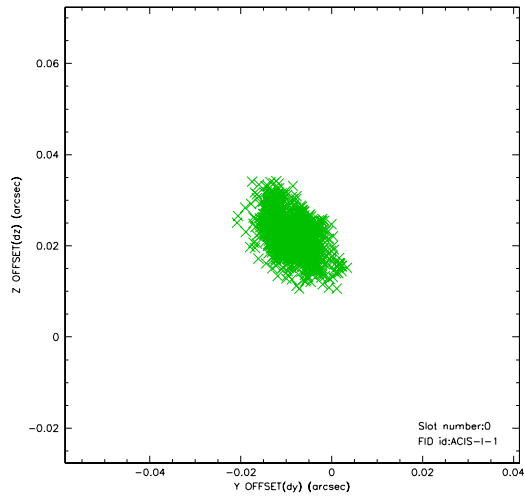


2.4.5 Slot 7

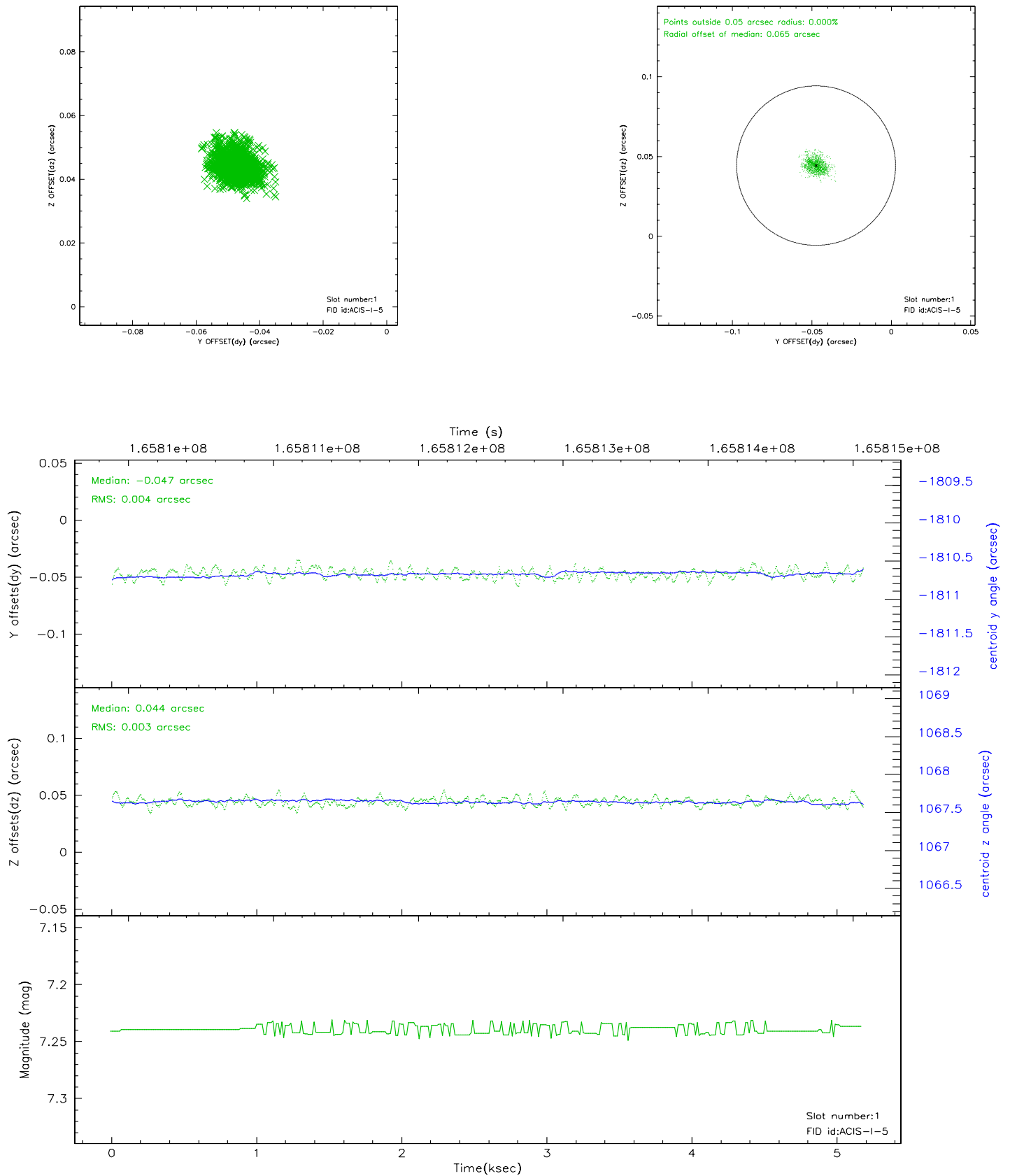


2.5 FID Slots

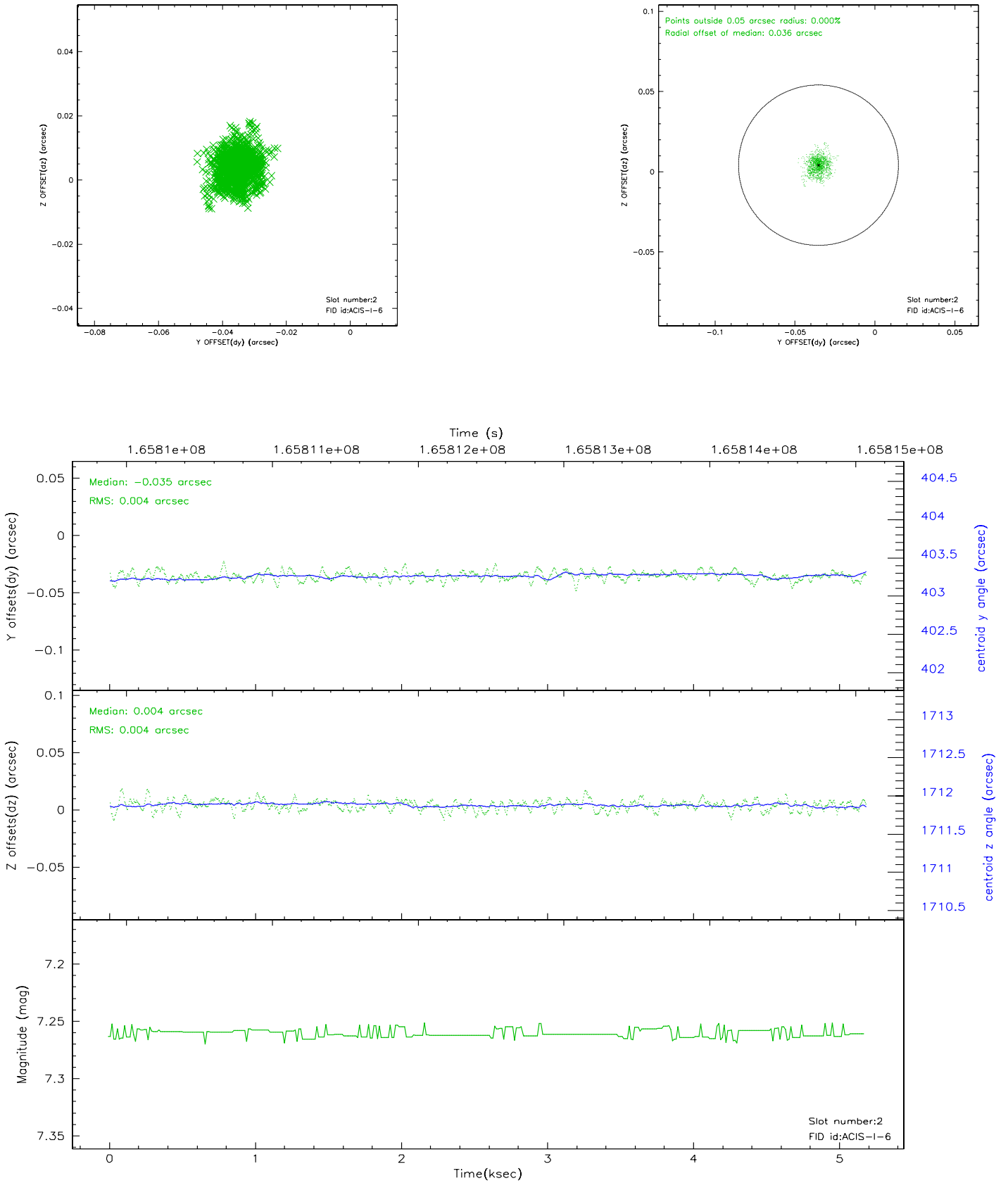
2.5.1 Slot 0



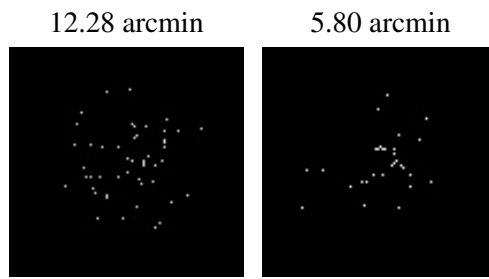
2.5.2 Slot 1



2.5.3 Slot 2



3 Point Sources



A Summary

A.1 Status

V&V Scientist	Jen Lauer
V&V Date (YYYY-MM-DD)	2006.07.30
V&V Edition	1
V&V Disposition and Status	OK
V&V Charge Time	4.777

A.2 Comments