

# V&V Reference Report

## L2 ASCDS Version : 7.6.8

Observation 3498 - L2 Version 001  
Chandra X-Ray Center

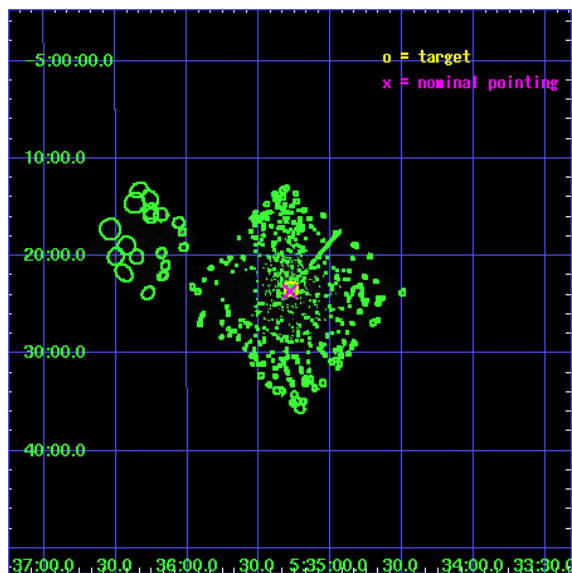
L2 Processing Date : Jul 19 2006

## Contents

<b>1</b>	<b>Front</b>	<b>2</b>
<b>2</b>	<b>OBI</b>	<b>3</b>
2.1	OBI . . . . .	3
2.1.1	Images . . . . .	3
2.1.2	Bias . . . . .	3
2.1.3	Parameters . . . . .	4
2.1.4	Events . . . . .	4
2.2	Compared Parameters . . . . .	5
2.3	Aspect . . . . .	6
2.4	Star Slots . . . . .	9
2.4.1	Slot 3 . . . . .	9
2.4.2	Slot 4 . . . . .	10
2.4.3	Slot 5 . . . . .	11
2.4.4	Slot 6 . . . . .	12
2.4.5	Slot 7 . . . . .	13
2.5	FID Slots . . . . .	14
2.5.1	Slot 0 . . . . .	14
2.5.2	Slot 1 . . . . .	15
2.5.3	Slot 2 . . . . .	16
<b>3</b>	<b>Point Sources</b>	<b>17</b>
<b>A</b>	<b>Summary</b>	<b>18</b>
A.1	Status . . . . .	18
A.2	Comments . . . . .	18

# 1 Front

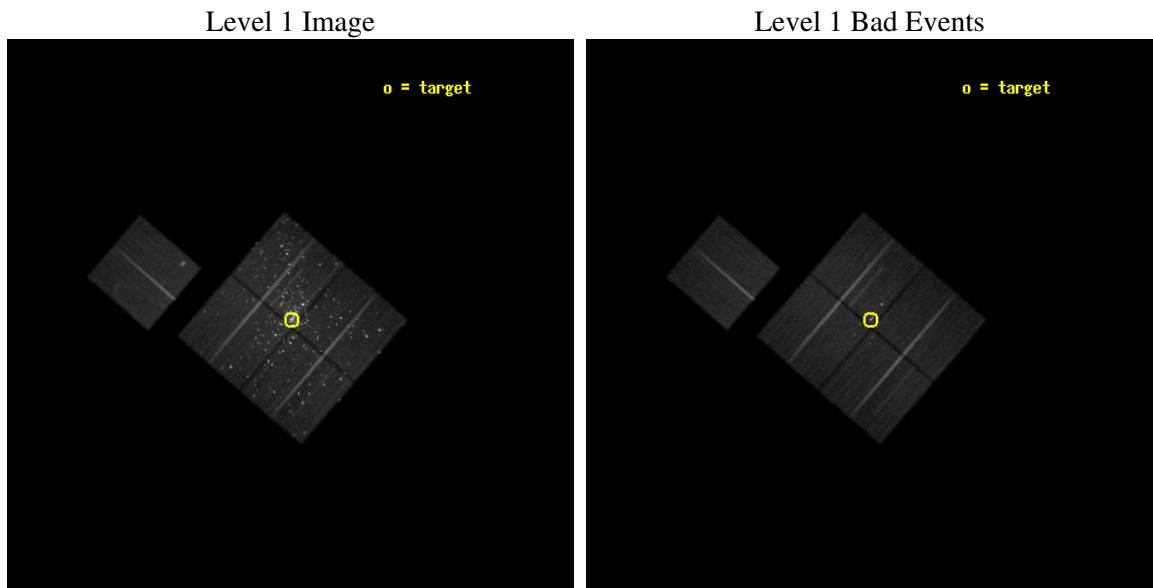
seq_num	200193
obs_id	3498
title	AN ULTRADEEP CHANDRA STUDY OF THE ORION NEBULA (HRC GTO TEAM PORTION)
observer	Dr. Stephen Murray
object	ORION NEBULA CLUSTER
dtcycle	0
cycle	P
ra_targ	83.819583
dec_targ	-5.39
ra_nom	83.821002431993
dec_nom	-5.3944022532692
roll_nom	310.90882428671
revision	2
ontime	69961.932434678
livetime	69047.828282194
ontime0	69974.496455014
ontime1	70009.117849141
ontime2	69977.637435347
ontime3	69961.932434678
ontime6	70012.188208252
l2events	644233



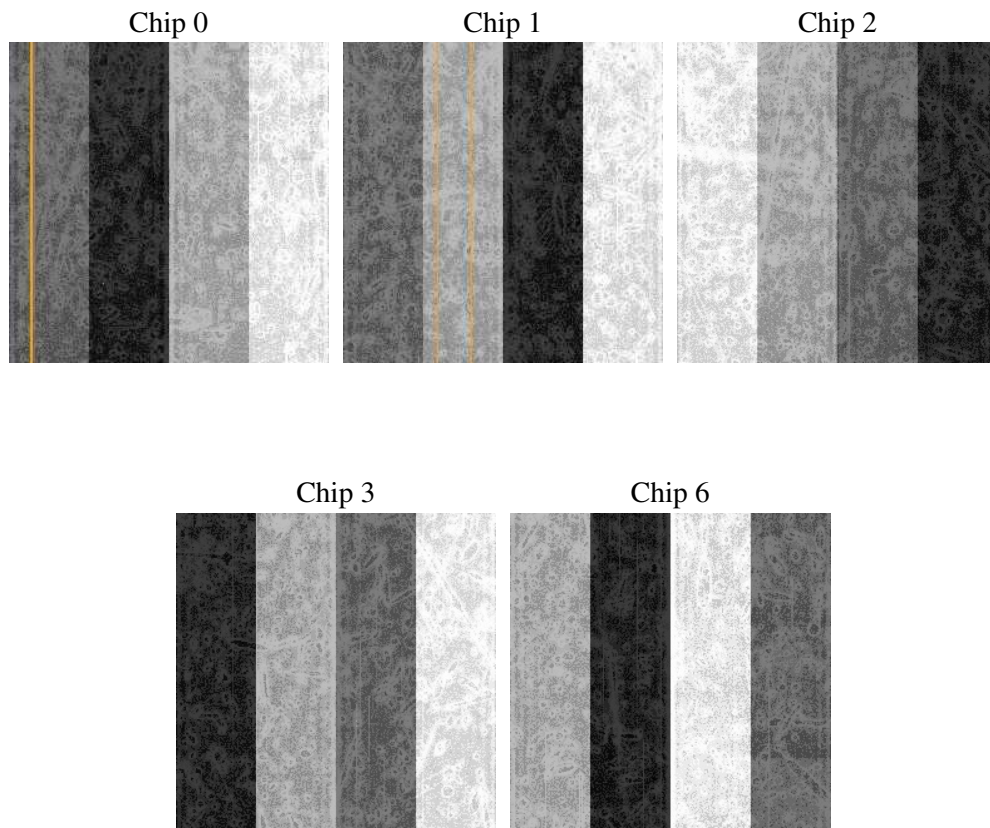
## 2 OBI

### 2.1 OBI

#### 2.1.1 Images



#### 2.1.2 Bias



### 2.1.3 Parameters

obi_num	0
ascdsver	7.6.8
caldbver	3.2.2
date	2006-07-19T09:09:55
revision	2

sched_exp_time	70000.000000
ontime	69972.337266058
ontime0	69984.901286393
ontime1	70019.452198744
ontime2	69988.042266726
ontime3	69972.337266058
ontime6	70022.593039632
l1events	2293812

### 2.1.4 Events

	ccd 0	ccd 1	ccd 2	ccd 3	ccd 6
level 1 events	418645	399242	453847	664643	357435
rejected events	302875	287073	339354	355141	313893
rejected %	72%	71%	74%	53%	87%

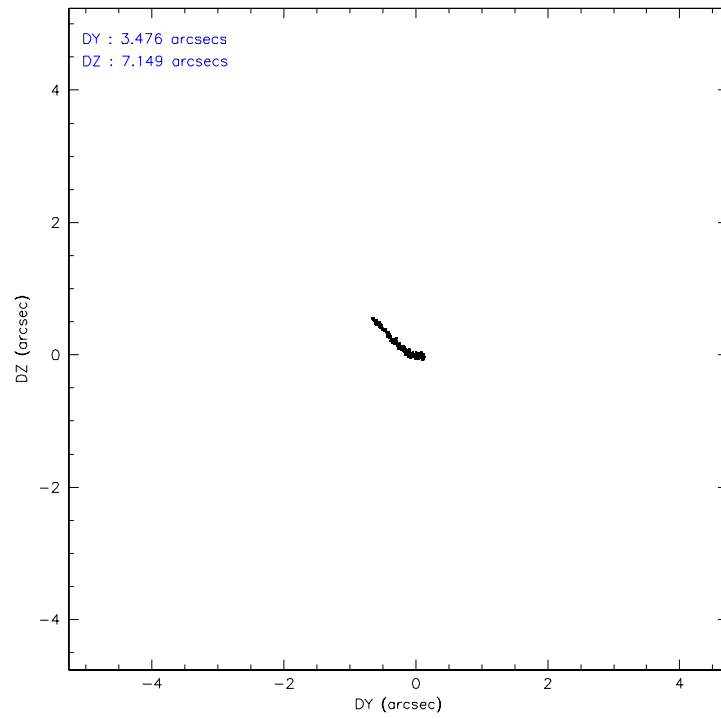
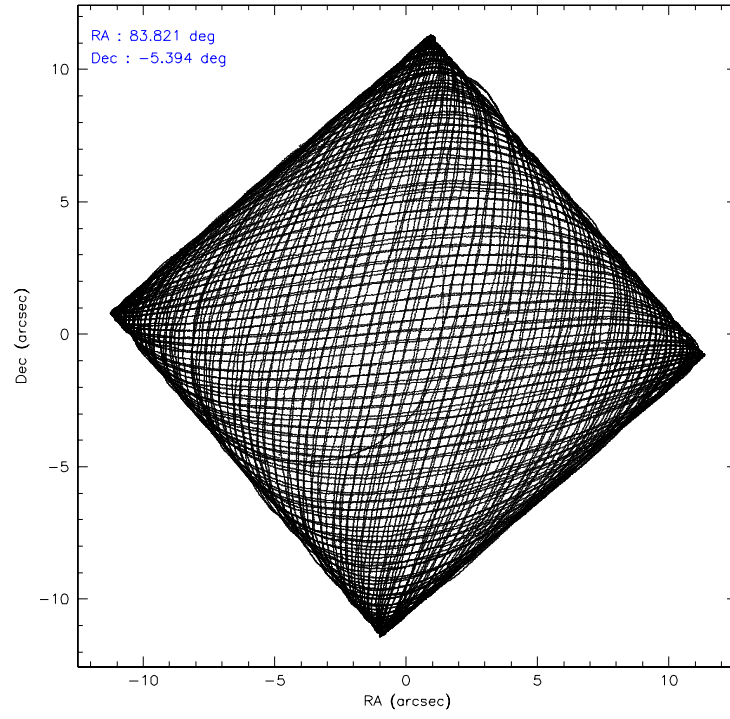
	ccd 0	ccd 1	ccd 2	ccd 3	ccd 6
grade 0 events	79070	75506	79193	223036	20247
	18%	18%	17%	33%	5%
grade 1 events	892	675	1274	10190	192
	0%	0%	0%	1%	0%
grade 2 events	15906	14904	15716	39433	7839
	3%	3%	3%	5%	2%
grade 3 events	6558	6486	6057	15089	4210
	1%	1%	1%	2%	1%
grade 4 events	6300	6480	6298	14815	4231
	1%	1%	1%	2%	1%
grade 5 events	10391	11176	9596	19441	11040
	2%	2%	2%	2%	3%
grade 6 events	7963	8805	7287	17292	7025
	1%	2%	1%	2%	1%
grade 7 events	291565	275210	328426	325347	302651
	69%	68%	72%	48%	84%

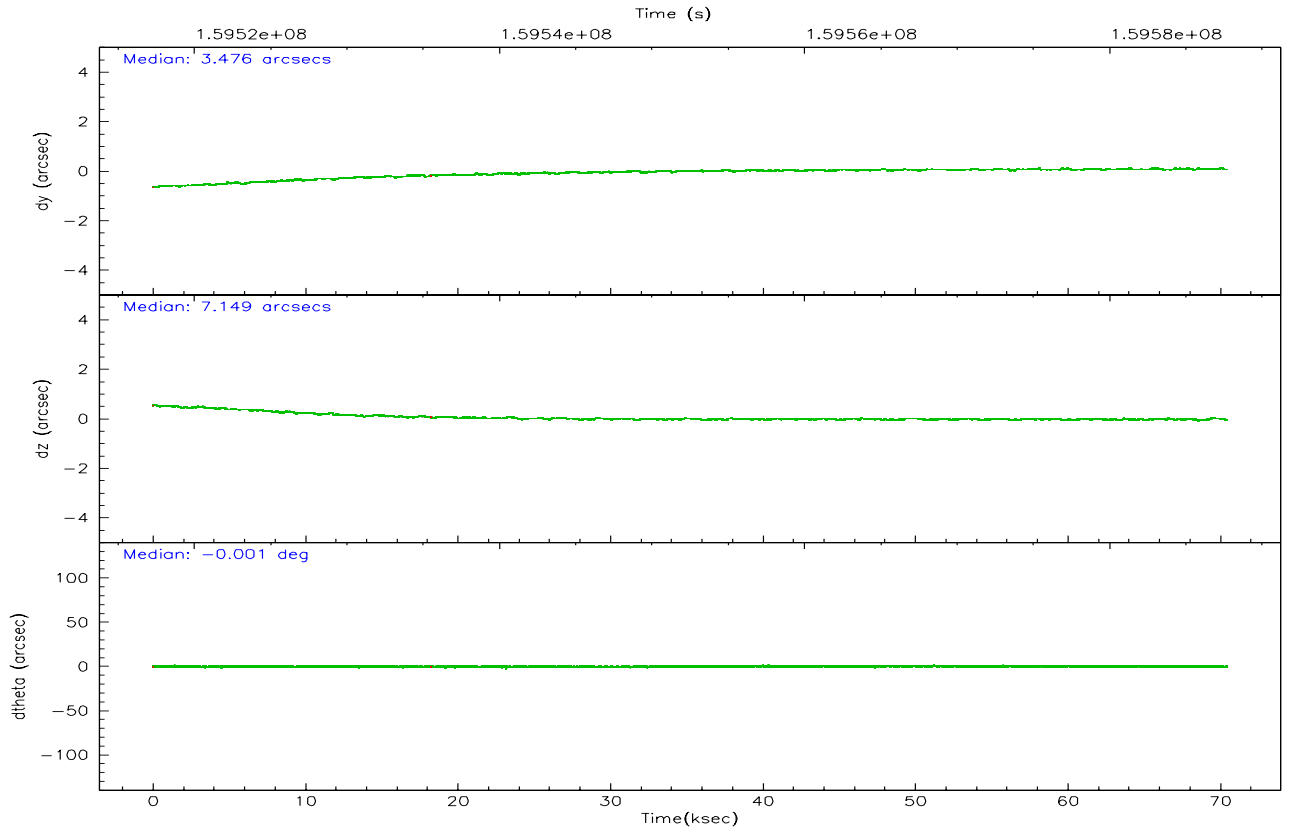
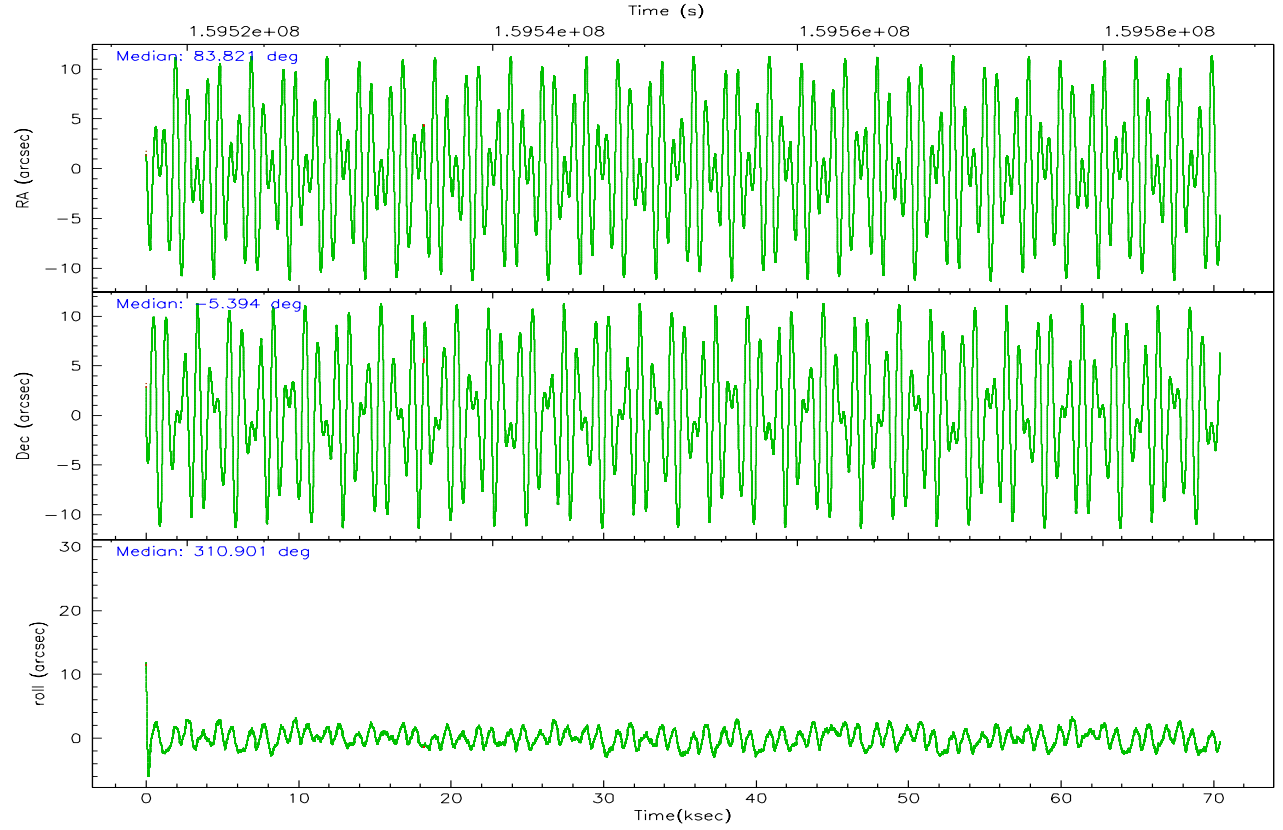


## 2.2 Compared Parameters

Parameter	Planned	Actual	Parameter	Planned	Actual
Instrument	ACIS	ACIS	Obspar format version number	6	6
Detector	ACIS-01236	ACIS-01236	Obspar file type	PREDICTED	ACTUAL
Grating	NONE	NONE	Obspar update status	NONE	UPDATED
Data mode	VFAINT	VFAINT	On-chip summing requested	N	N
Observation mode	POINTING	POINTING	Subarray requested	NONE	NONE
Pointing RA	83.794989	83.82100243199324	Alternating exposures requested	N	N
Pointing Dec	-5.385556	-5.394402253269222	Primary exposure time	0.000000	3.1
Pointing Roll	310.697693	310.908824286706			
SIM focus pos (mm)	-0.782348	-0.7809083437167272			
SIM defocus (mm)	0	0.001439871863259334			
SIM translation stage pos (mm)	-233.592463	-233.5874344608287			
SIM translation stage offset (mm)	0	-0.005018542100998502			
Observation start time	159517719.184000	159516628.71549			
Observation start date	2003-01-21T06:27:35	2003-01-21T06:10:28			
Observation end time	159587719.184000	159588560.1435			
Observation end date	2003-01-22T01:54:15	2003-01-22T02:09:20			
Read mode	TIMED	TIMED			

## 2.3 Aspect



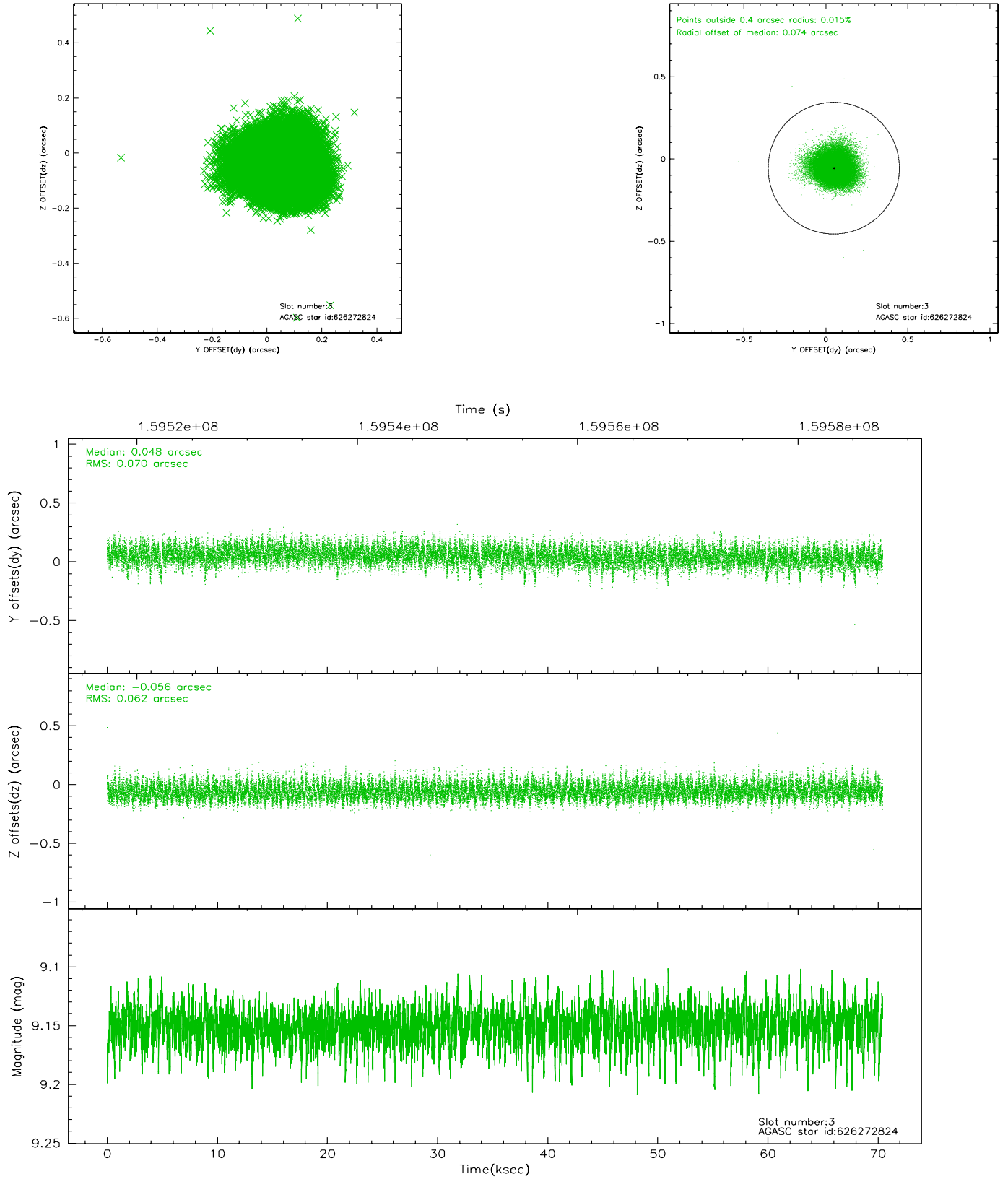


### Slot Statistics

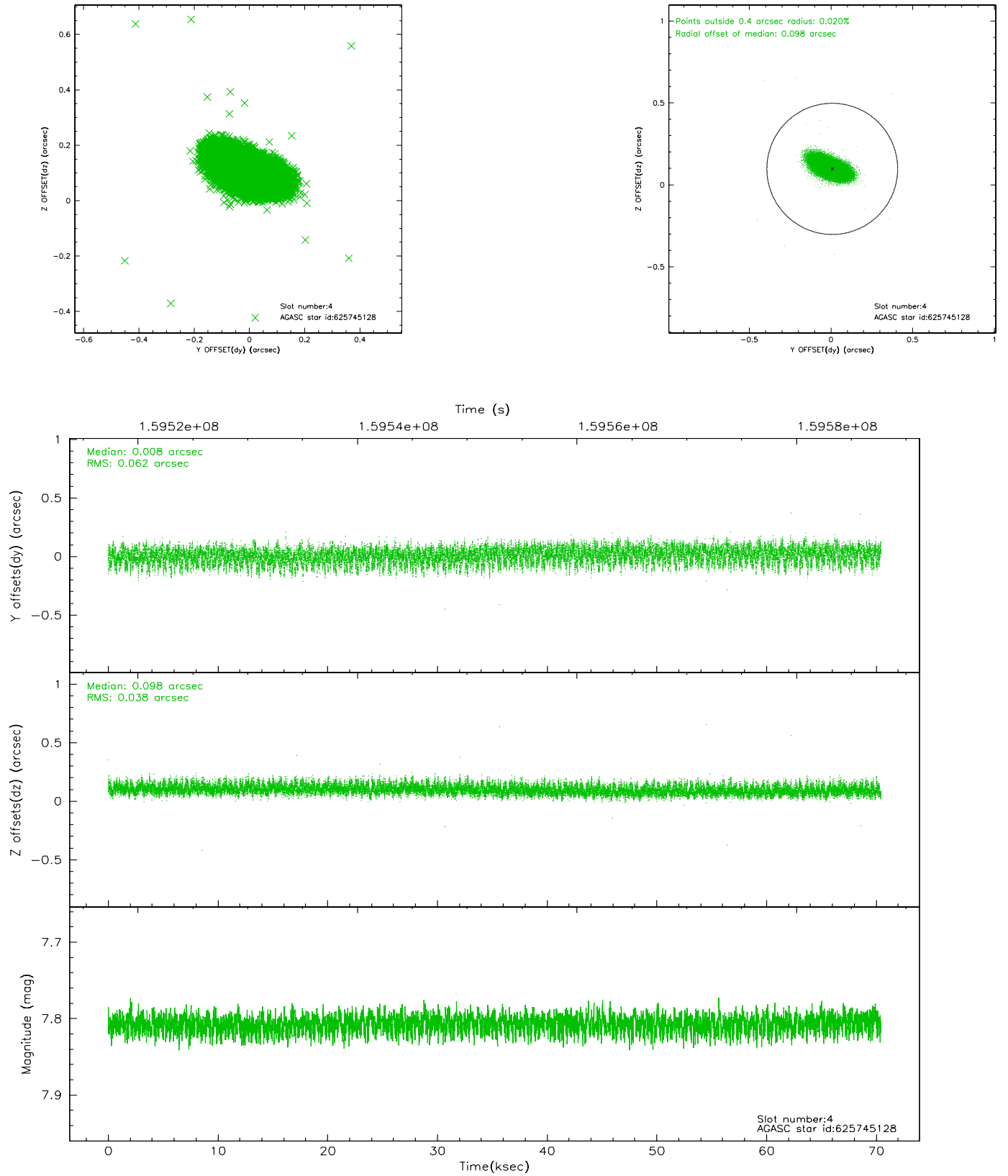
slot	status	id	mag	n_pts	med_dy	med_dz	dr1	dr2	ra	dec	mean_y	mean_z
0	FID	ACIS-I-1	7.25	17047	-0.002	0.041	0.012	0.021	0.000000	0.000000	936.38	-830.59
1	FID	ACIS-I-5	7.24	17028	-0.061	0.052	0.010	0.018	0.000000	0.000000	-1811.79	1066.98
2	FID	ACIS-I-6	7.26	17045	-0.028	-0.022	0.010	0.016	0.000000	0.000000	402.00	1711.32
3	GUIDE	626272824	9.15	34119	0.048	-0.056	0.099	0.160	83.942139	-6.012794	2056.15	-1072.56
4	GUIDE	625745128	7.81	34168	0.008	0.098	0.075	0.131	83.769930	-4.731835	-1842.74	1466.60
5	GUIDE	625745104	7.11	34160	-0.247	0.122	0.090	0.152	83.841109	-4.494168	-2325.38	2218.25
6	GUIDE	626273032	9.20	34135	0.111	-0.124	0.118	0.200	83.765167	-5.983575	1563.19	-1484.29
7	GUIDE	626272880	7.69	34157	0.083	-0.036	0.073	0.115	83.815609	-6.032748	1815.26	-1462.79

## 2.4 Star Slots

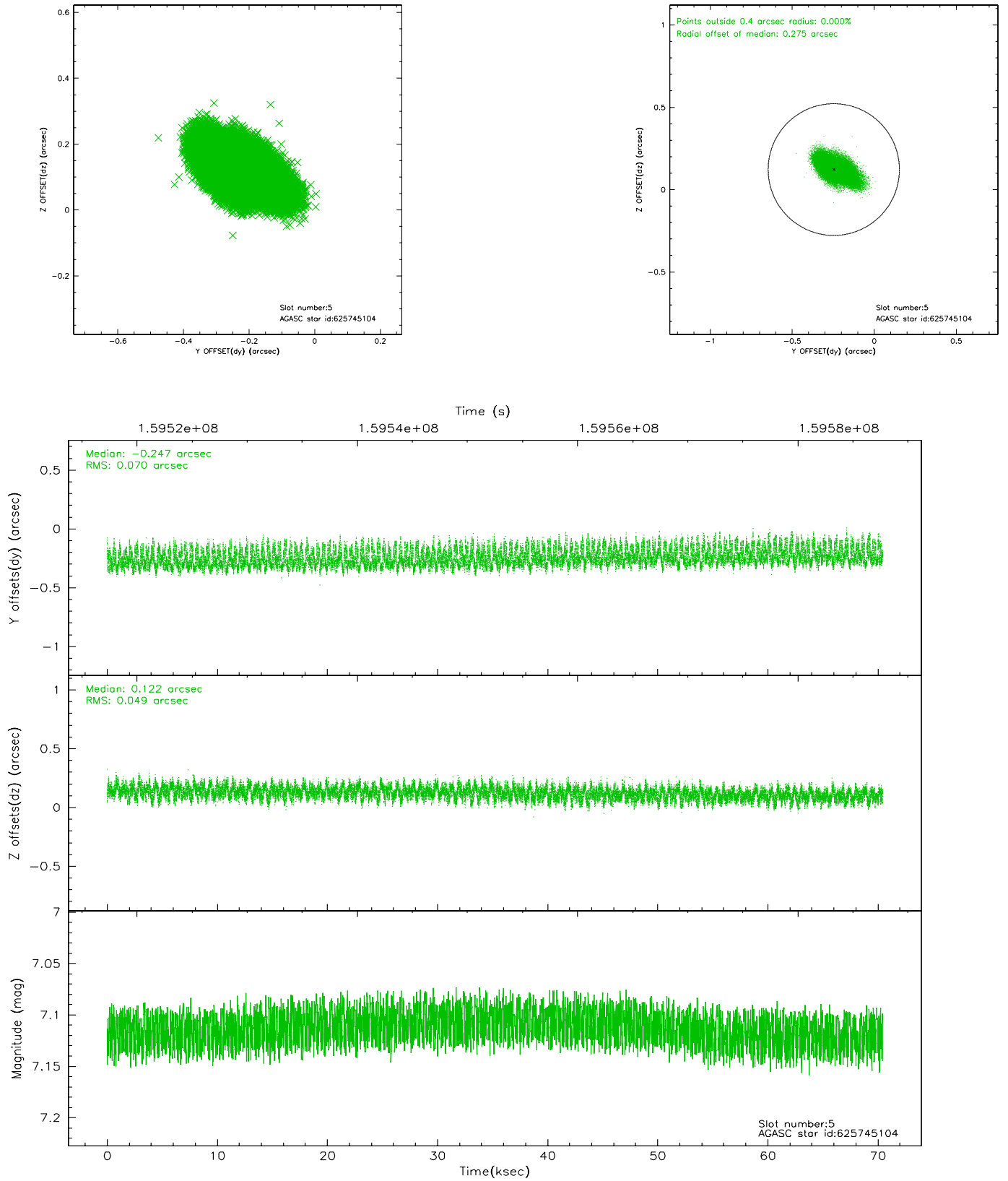
### 2.4.1 Slot 3



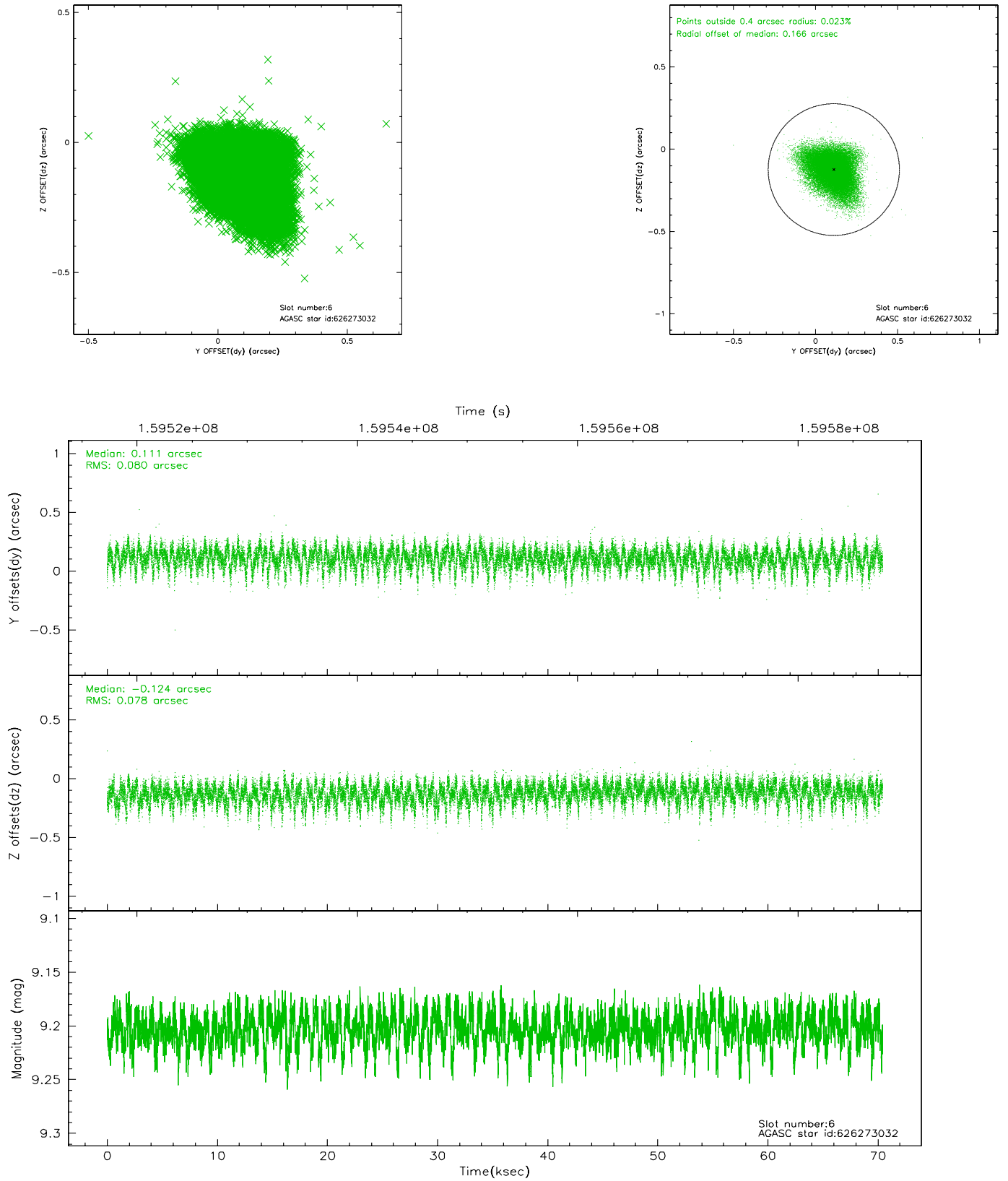
## 2.4.2 Slot 4



### 2.4.3 Slot 5

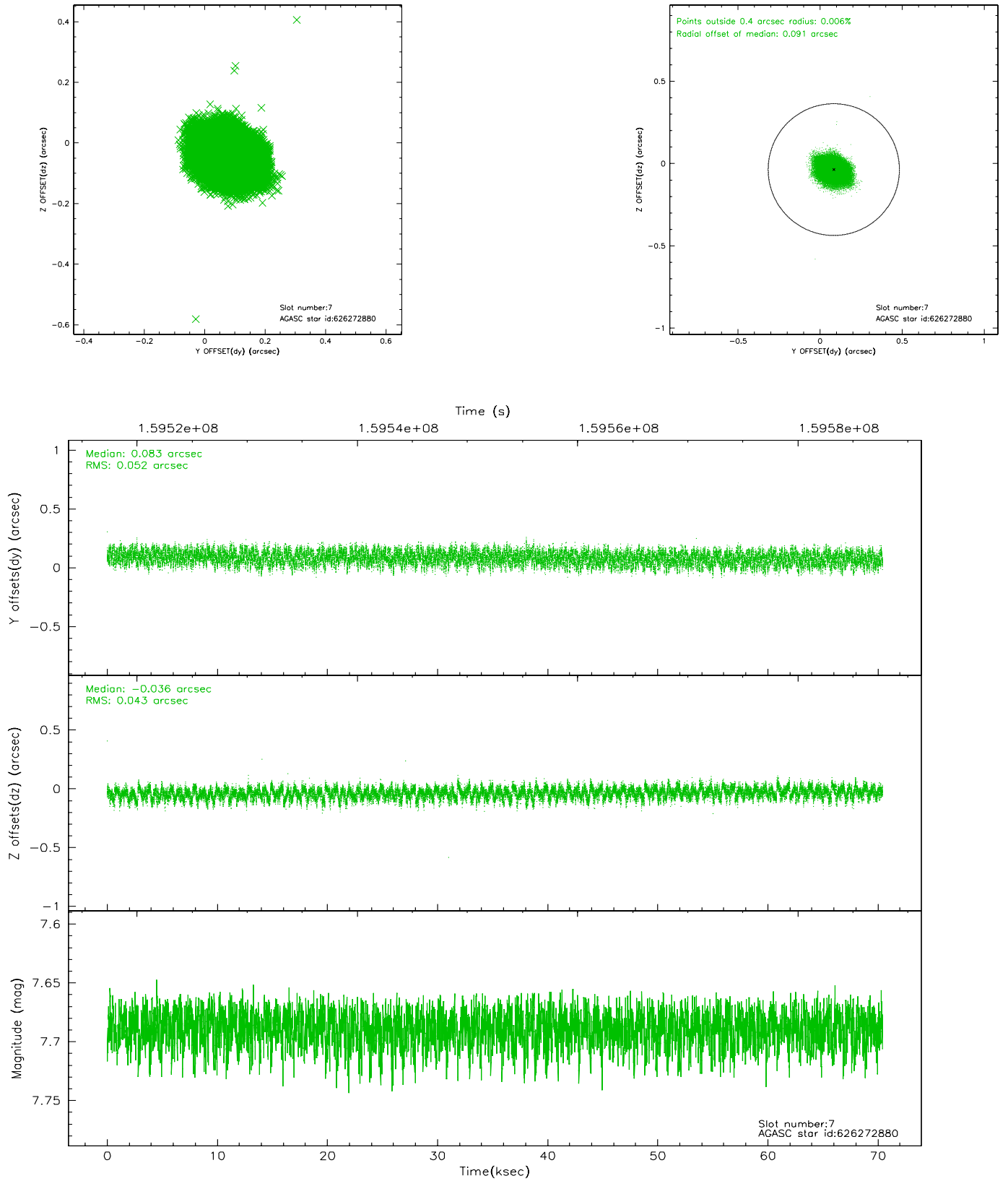


## 2.4.4 Slot 6



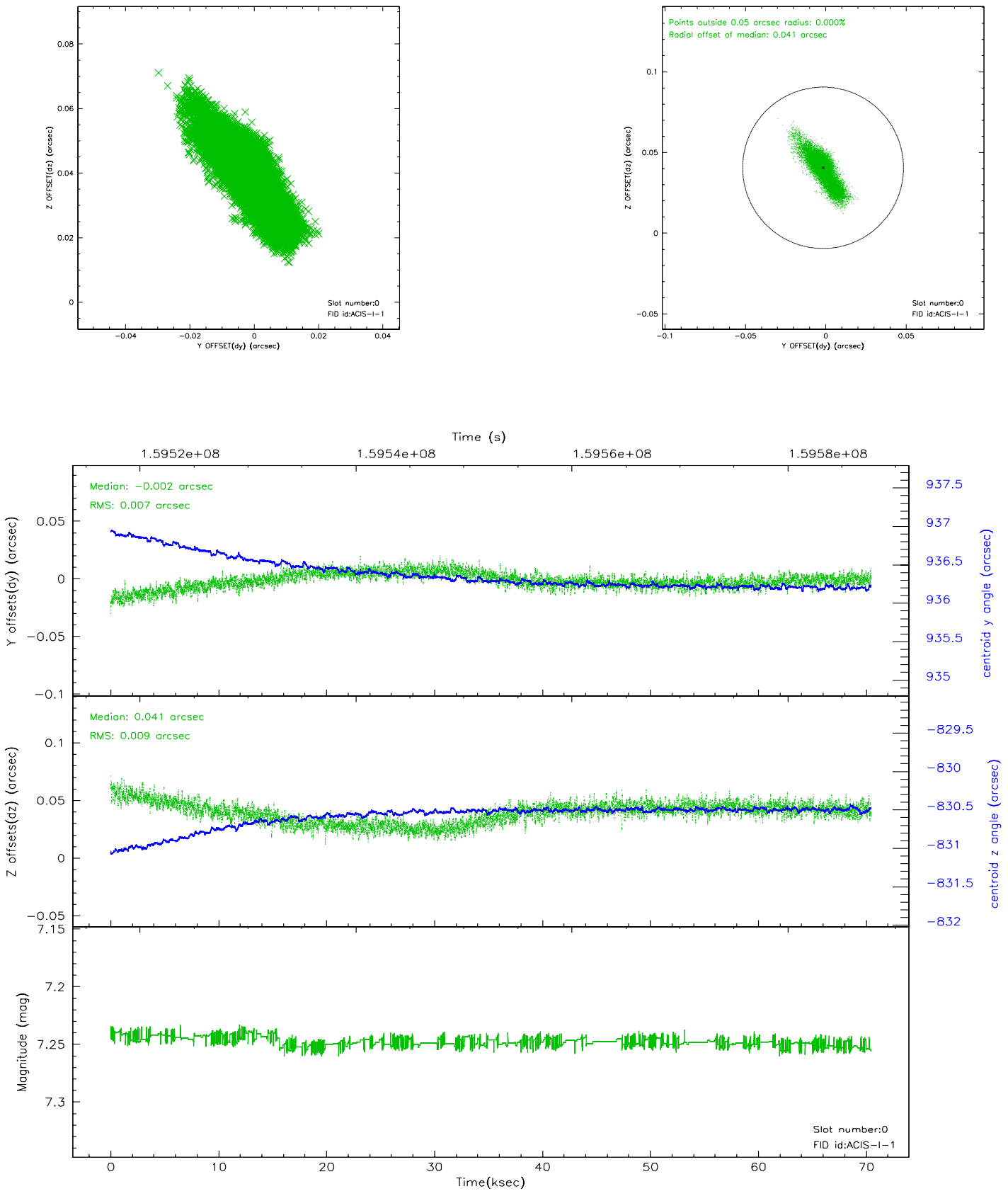


## 2.4.5 Slot 7

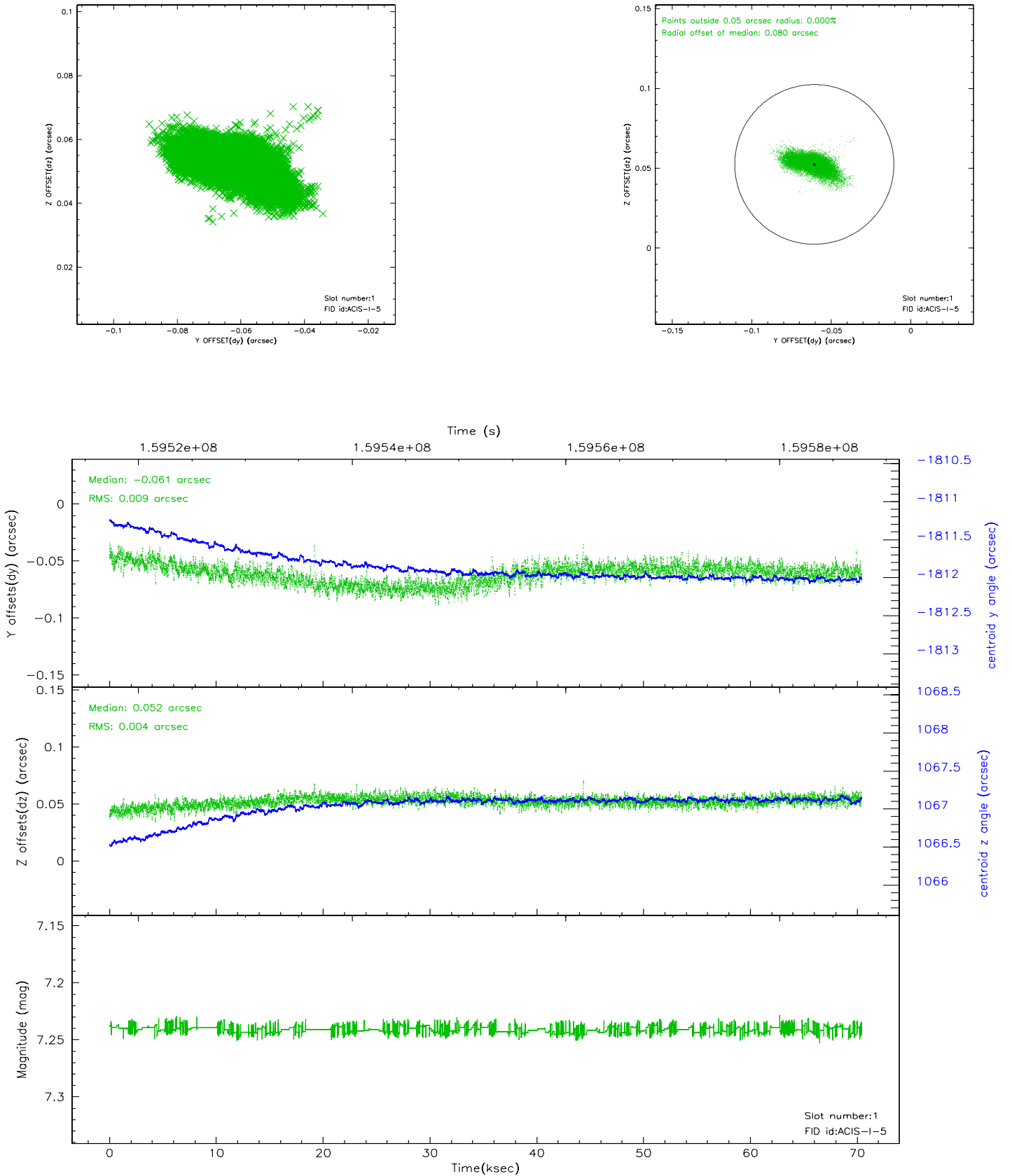


## 2.5 FID Slots

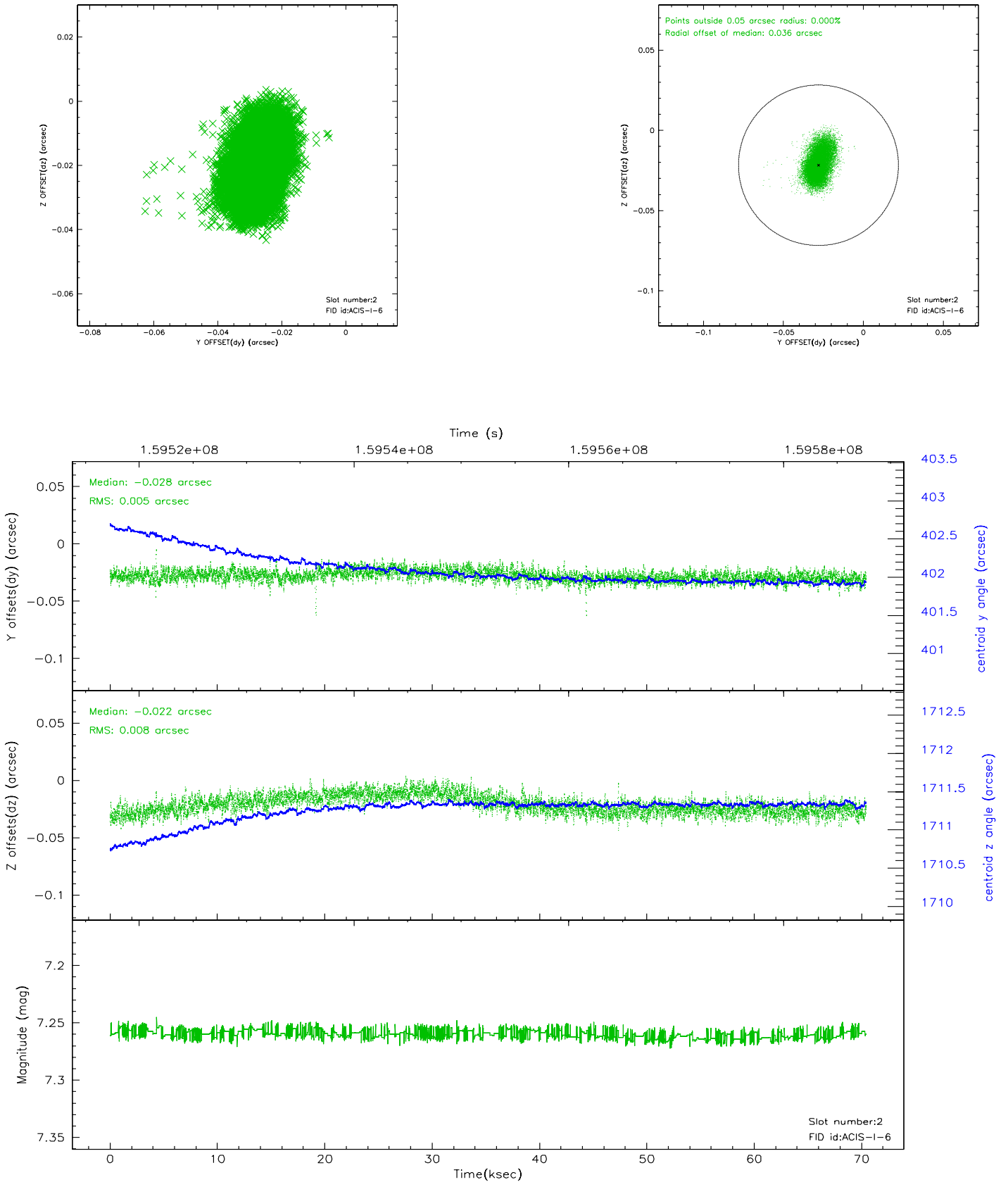
### 2.5.1 Slot 0



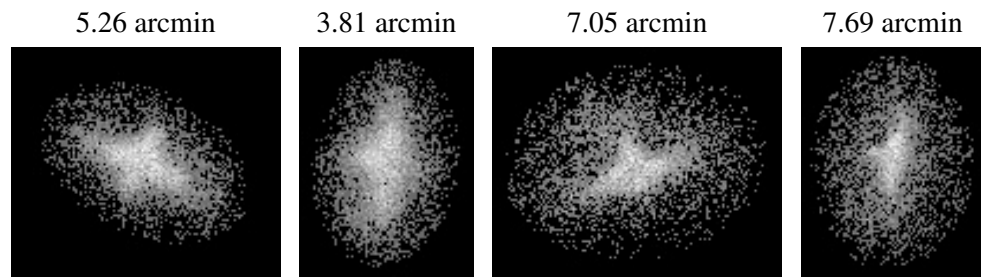
## 2.5.2 Slot 1



### 2.5.3 Slot 2



### 3 Point Sources



## A Summary

### A.1 Status

V&V Scientist	Jen Lauer
V&V Date (YYYY-MM-DD)	2006.07.19
V&V Edition	1
V&V Disposition and Status	OK
V&V Charge Time	69.961

### A.2 Comments

Monitor constraint not met.