

V&V Reference Report

L2 ASCDS Version : 8.4.5

Observation 3338 - L2 Version 4
Chandra X-Ray Center

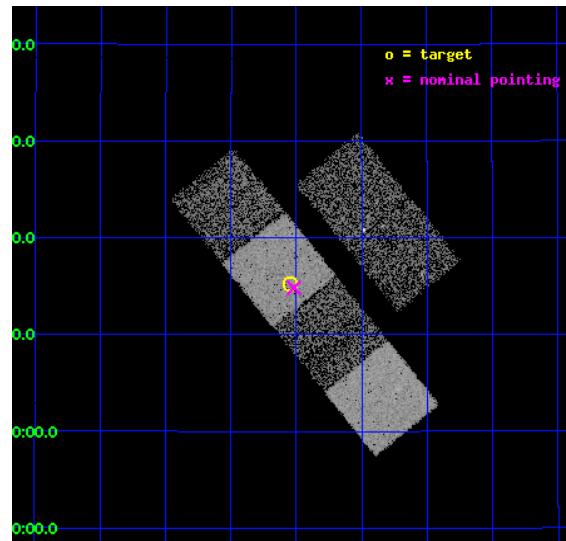
L2 Processing Date : Oct 10 2012

Contents

1	Front	2
2	OBI	3
2.1	OBI	3
2.1.1	Images	3
2.1.2	Bias	3
2.1.3	Parameters	4
2.1.4	Events	4
2.2	Compared Parameters	5
2.3	Aspect	6
2.4	Star Slots	9
2.4.1	Slot 3	9
2.4.2	Slot 4	10
2.4.3	Slot 5	11
2.4.4	Slot 6	12
2.4.5	Slot 7	13
2.5	FID Slots	14
2.5.1	Slot 0	14
2.5.2	Slot 1	15
2.5.3	Slot 2	16
A	Summary	17
A.1	Status	17
A.2	Comments	17

1 Front

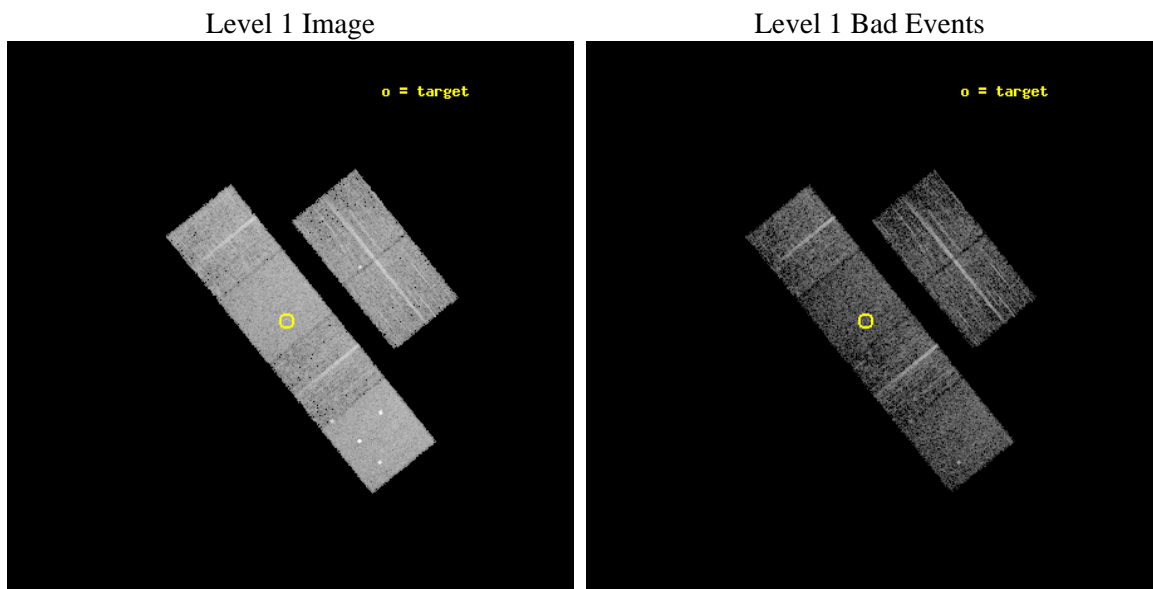
seq_num	900177	Sequence number
obs_id	3338	Observation id
title	THE SHEEP SURVEY: WHAT KIND OF OBJECTS MAKE THE X-RAY BACKGROUND?	
observer	Prof Kirpal Nandra	Principal investigator
object	AX J1532.5+2415	Source name
dtcycle	0	
cycle	P	events from which exps? Prim/Second/Both
ra_targ	233.137917	Observer's specified target RA [deg]
dec_targ	24.253611	Observer's specified target Dec [deg]
ra_nom	233.1298167249	Nominal RA [deg]
dec_nom	24.247194355806	Nominal Dec [deg]
roll_nom	231.03020716404	Nominal Roll [deg]
revision	4	Processing version of data
ontime	4959.9999815226	Sum of GTIs [s]
livetime	4897.1934752031	Livetime [s]
ontime2	4959.9999815226	Sum of GTIs [s]
ontime3	4959.9999815226	Sum of GTIs [s]
ontime5	4959.9999815226	Sum of GTIs [s]
ontime6	4959.9999815226	Sum of GTIs [s]
ontime7	4959.9999815226	Sum of GTIs [s]
ontime8	4959.9999815226	Sum of GTIs [s]
l2events	52096	Number of level 2 events



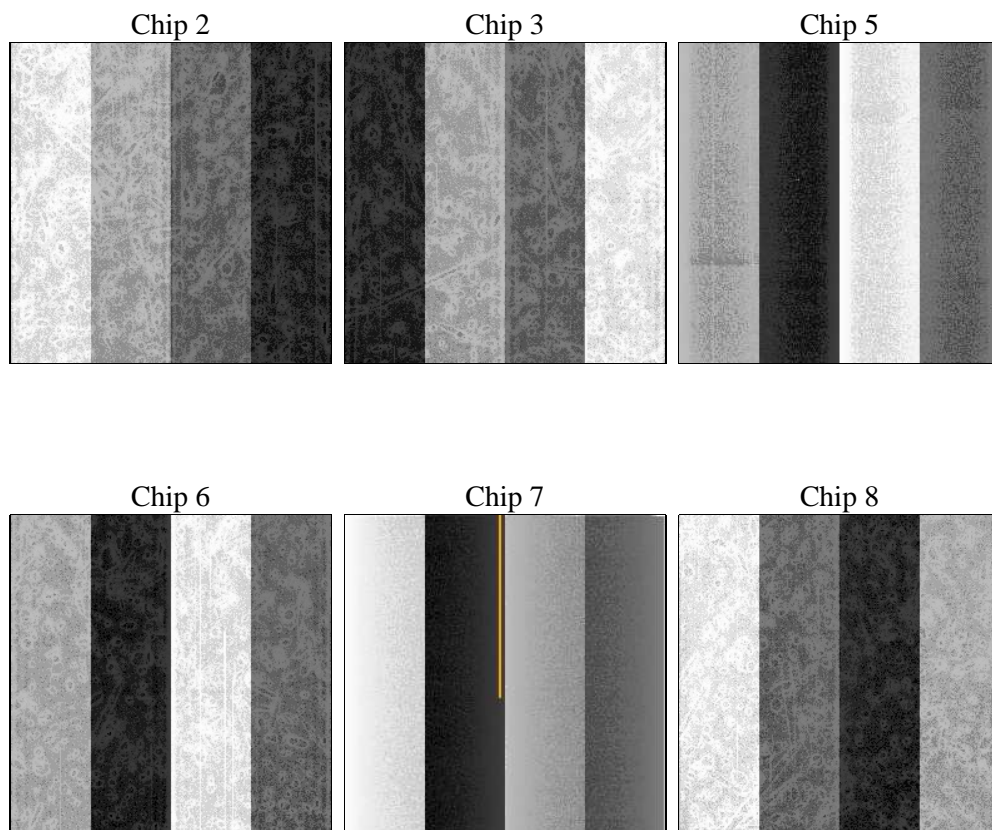
2 OBI

2.1 OBI

2.1.1 Images



2.1.2 Bias



2.1.3 Parameters

obi_num	0	Obi number	sched_exp_time	5000.000000	[s] Scheduled observation exposure time
ascdsver	8.4.5	Processing system revision	ontime	4959.9999815226	Sum of GTIs [s]
caldsver	4.5.2	 	ontime2	4959.9999815226	Sum of GTIs [s]
date	2012-10-10T03:57:37	Date and time of file creation	ontime3	4959.9999815226	Sum of GTIs [s]
revision	4	Processing version of data	ontime5	4959.9999815226	Sum of GTIs [s]
			ontime6	4959.9999815226	Sum of GTIs [s]
			ontime7	4959.9999815226	Sum of GTIs [s]
			ontime8	4959.9999815226	Sum of GTIs [s]
			l1events	235942	Number of level 1 events

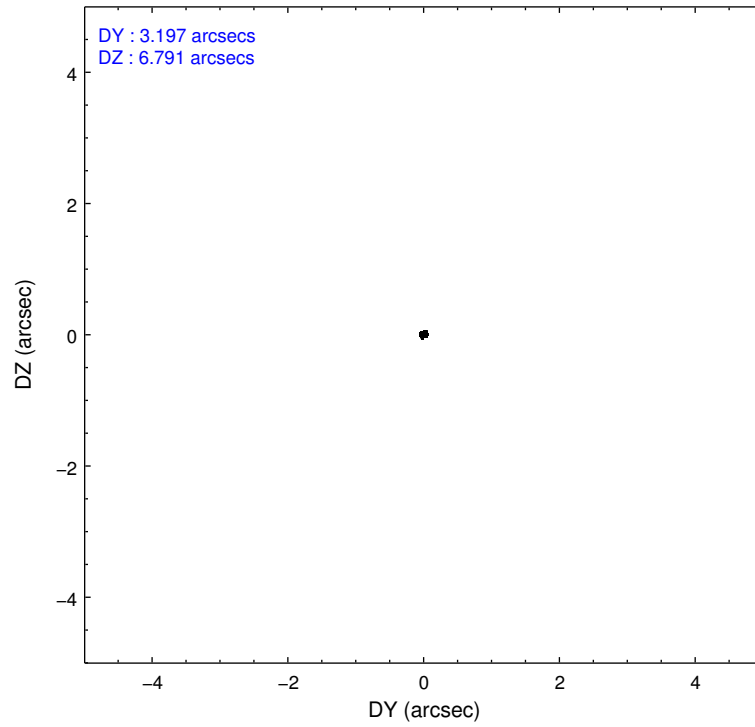
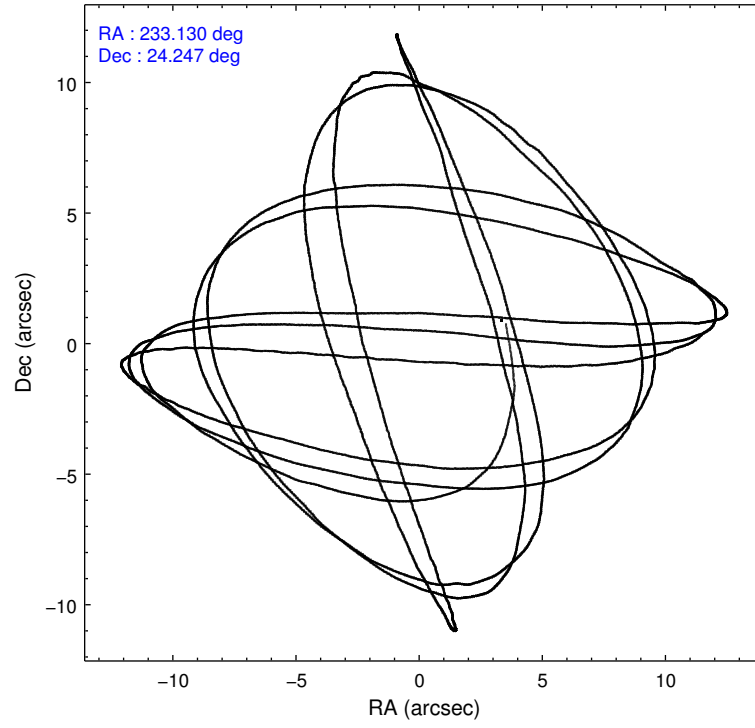
2.1.4 Events

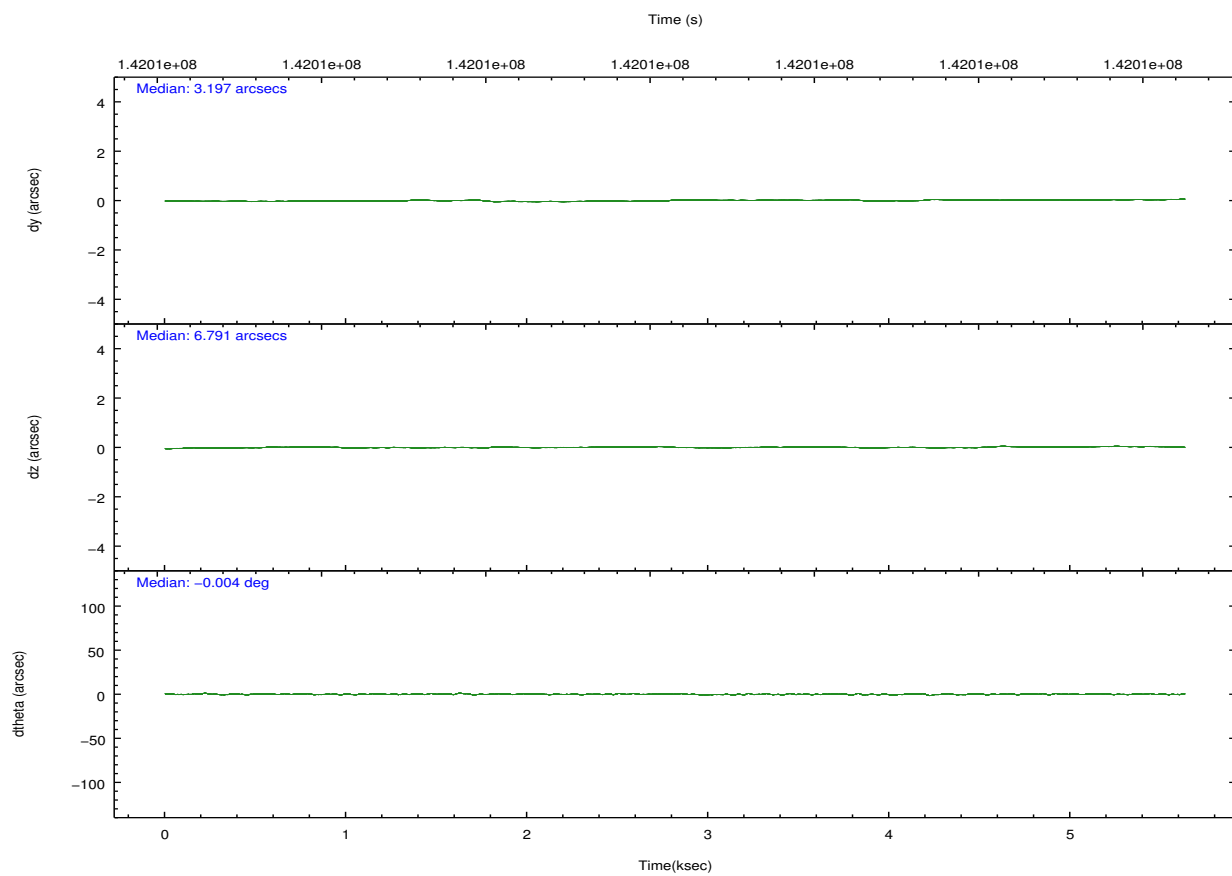
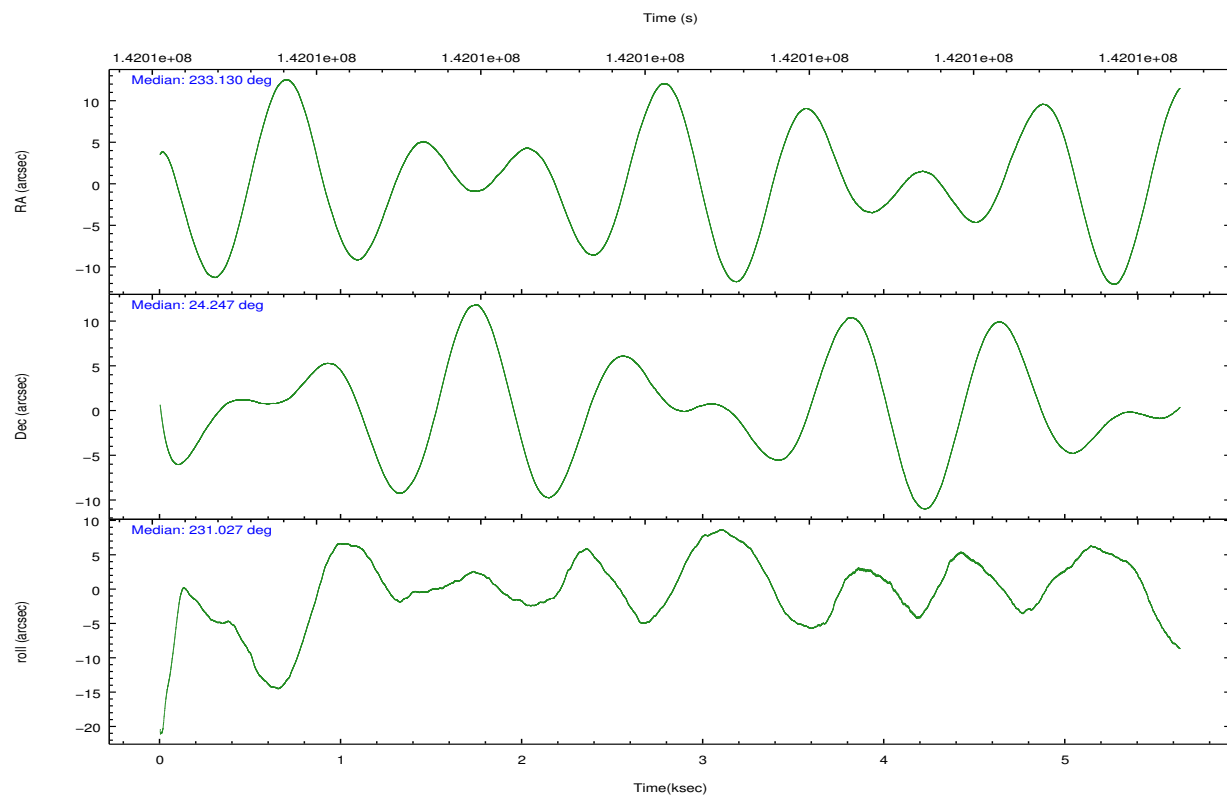
	ccd 2	ccd 3	ccd 5	ccd 6	ccd 7	ccd 8		ccd 2	ccd 3	ccd 5	ccd 6	ccd 7	ccd 8
level 1 events	33758	32471	50743	33355	43211	42404	grade 0 events	1700	1975	4373	1570	1712	2529
rejected events	29890	28387	26511	29476	25292	34082		5%	6%	8%	4%	3%	5%
rejected %	88%	87%	52%	88%	58%	80%	grade 1 events	18	21	117	21	53	19
								0%	0%	0%	0%	0%	0%
							grade 2 events	821	741	6615	791	3670	1866
								2%	2%	13%	2%	8%	4%
							grade 3 events	357	321	929	386	1613	812
								1%	0%	1%	1%	3%	1%
							grade 4 events	354	373	866	373	1591	830
								1%	1%	1%	1%	3%	1%
							grade 5 events	1209	1252	3629	1435	4102	1781
								3%	3%	7%	4%	9%	4%
							grade 6 events	638	683	11463	765	9339	2306
								1%	2%	22%	2%	21%	5%
							grade 7 events	28661	27105	22751	28014	21131	32261
								84%	83%	44%	83%	48%	76%

2.2 Compared Parameters

Parameter	Planned	Actual	Parameter	Planned	Actual
Instrument	ACIS	ACIS	Obspar format version number	7	7
Detector	ACIS-235678	ACIS-235678	Obspar file type	PREDICTED	ACTUAL
Grating	NONE	NONE	Obspar update status	NONE	UPDATED
Data mode	FAINT	FAINT	Number of optional ACIS chips dropped	0	0
Observation mode	POINTING	POINTING	On-chip summing requested	N	N
[deg] Pointing RA	233.134167	233.1298167249042	Subarray requested	NONE	NONE
[deg] Pointing Dec	24.274230	24.24719435580575	Alternating exposures requested	N	N
[deg] Pointing Roll	230.871801	231.0302071640435	[s] Primary exposure time	0.000000	3.2
[mm] SIM focus pos	-0.684267	-0.6828225247311905			
[mm] SIM defocus	0	0.001444936568705701			
[mm] SIM translation stage pos	-190.132523	-190.1425803651734			
[mm] SIM translation stage offset	0	0.01005778216563158			
[s] Observation start time (MET)	142006972.184000	142005785.26458			
Observation start date	2002-07-02T14:21:48	2002-07-02T14:03:05			
[s] Observation end time (MET)	142011972.184000	142012616.37736			
Observation end date	2002-07-02T15:45:08	2002-07-02T15:56:56			
Read mode	TIMED	TIMED			

2.3 Aspect



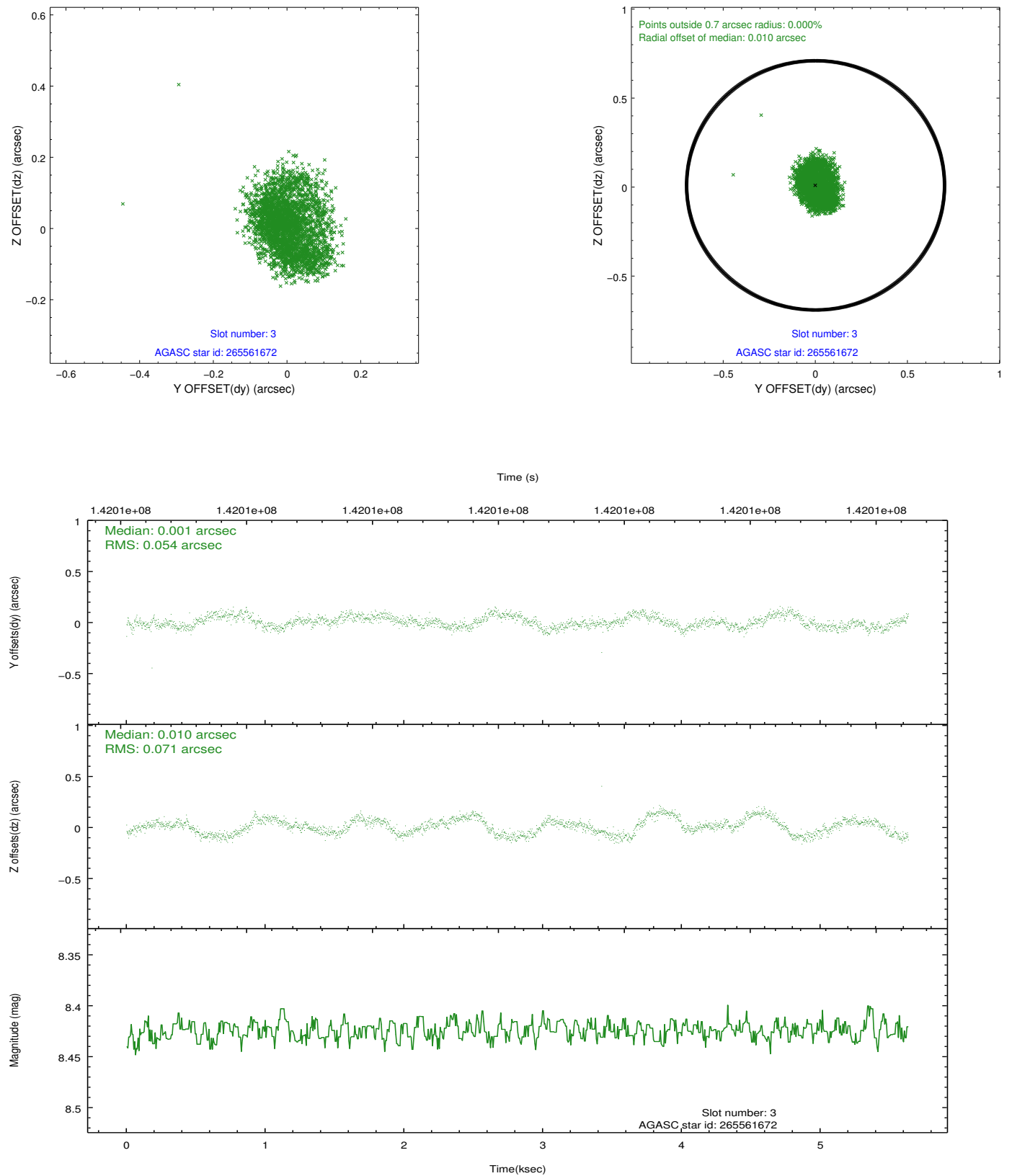


Slot Statistics

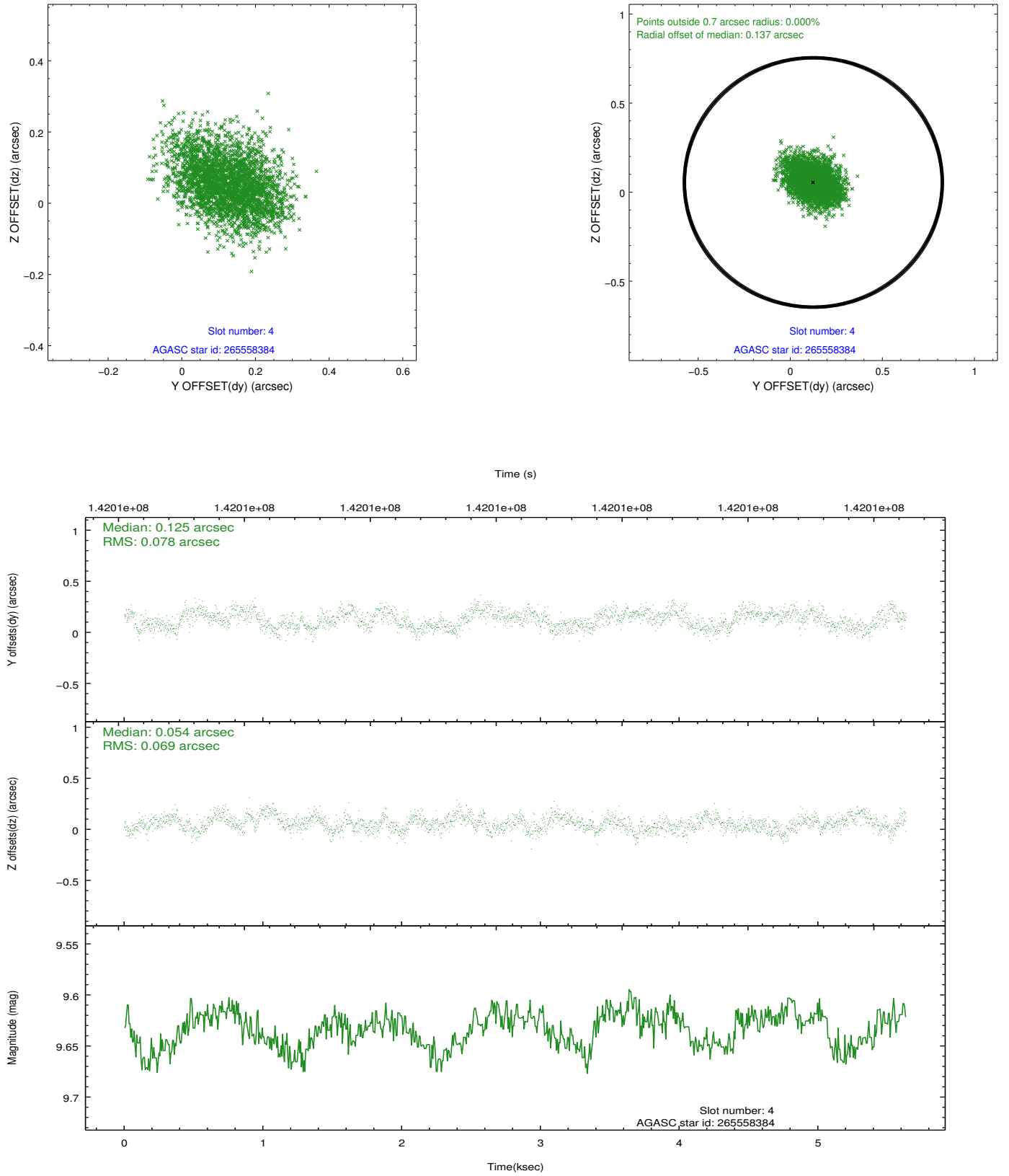
slot	status	id	mag	n_pts	med_dy	med_dz	dr1	dr2	ra	dec	mean_y	mean_z
0	FID	ACIS-S-2	7.12	1374	-0.023	0.004	0.007	0.011	0.000000	0.000000	-755.85	-1727.90
1	FID	ACIS-S-4	7.20	1374	0.002	0.010	0.006	0.011	0.000000	0.000000	2156.95	179.51
2	FID	ACIS-S-5	7.24	1375	-0.010	-0.006	0.007	0.011	0.000000	0.000000	-1807.33	174.35
3	GUIDE	265561672	8.42	2749	0.001	0.010	0.099	0.147	233.051219	23.521427	2274.56	1498.70
4	GUIDE	265558384	9.63	2749	0.125	0.054	0.113	0.177	232.899731	24.051291	1108.94	-90.42
5	GUIDE	265559904	10.01	2749	0.042	0.106	0.301	0.417	233.501135	24.275645	-765.24	930.64
6	GUIDE	265556832	10.18	2749	-0.091	-0.167	0.154	0.248	232.771701	24.451376	252.94	-1323.98
7	GUIDE	265559712	9.91	2744	-0.089	0.009	0.160	0.265	233.996729	24.207250	-1607.57	2343.84

2.4 Star Slots

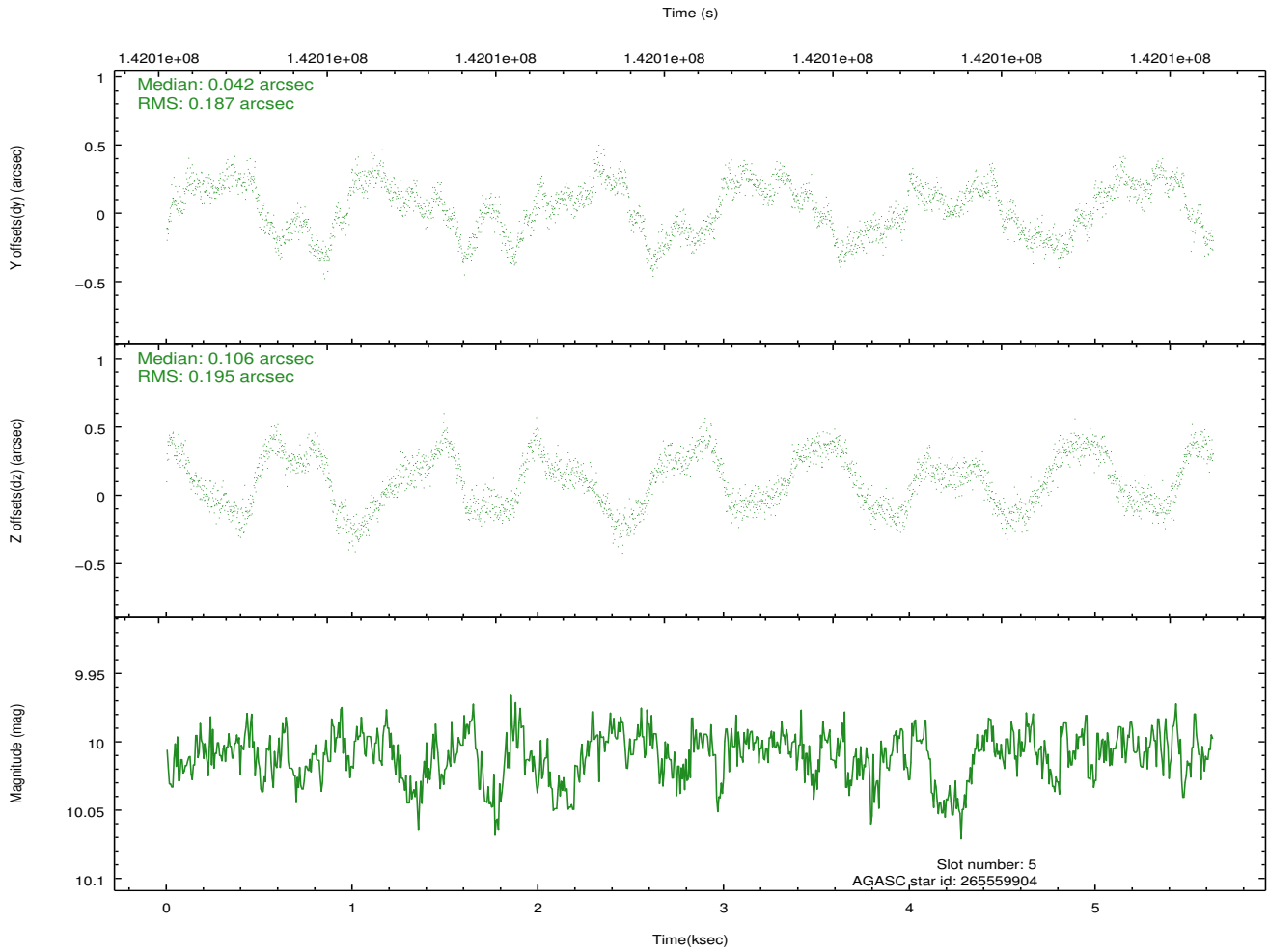
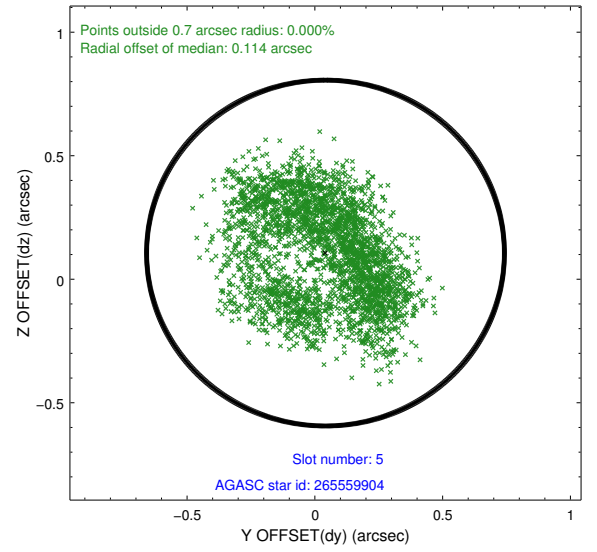
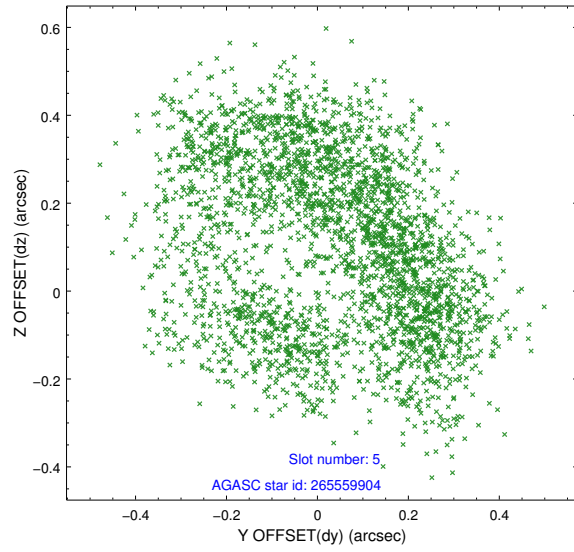
2.4.1 Slot 3



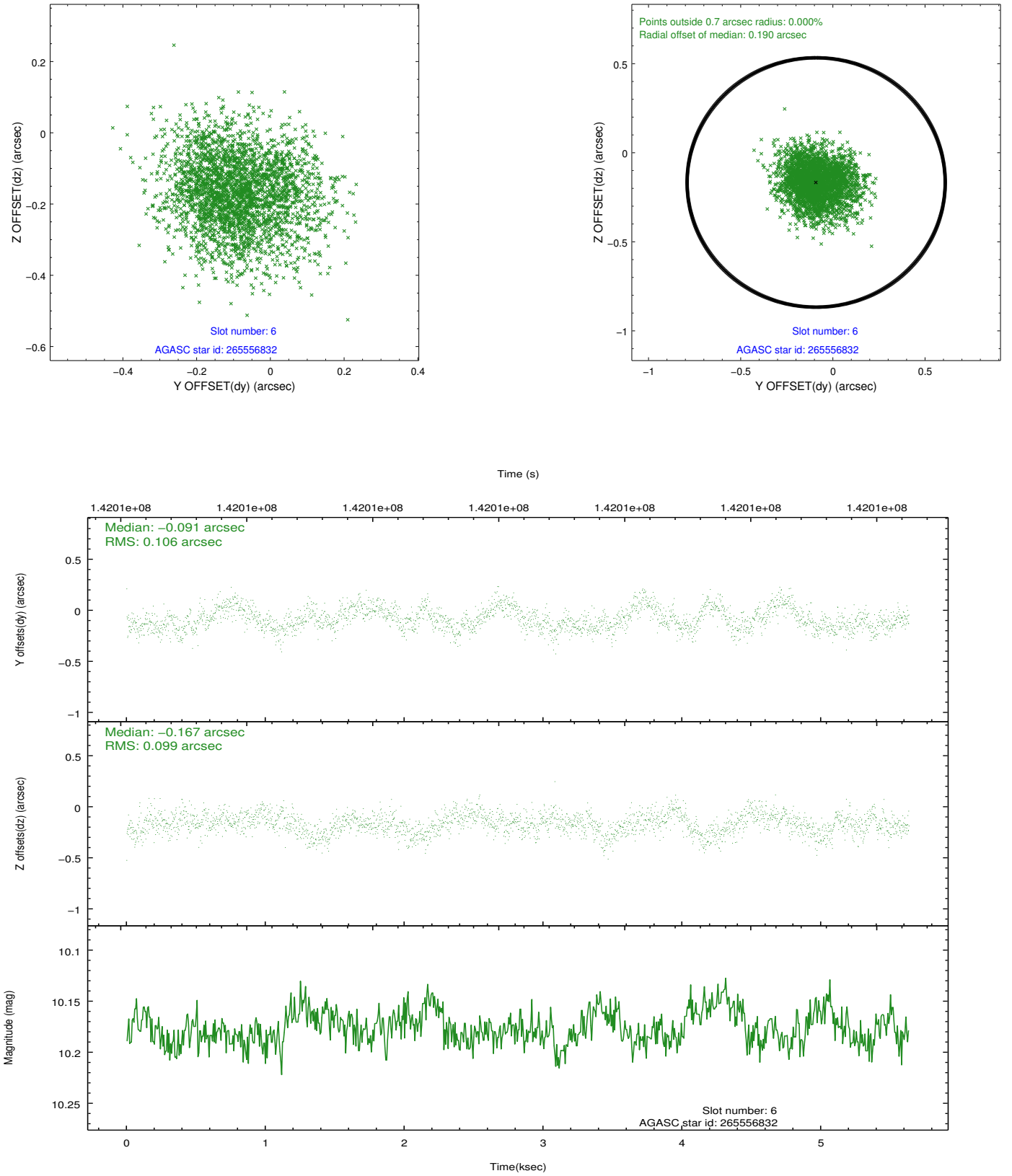
2.4.2 Slot 4



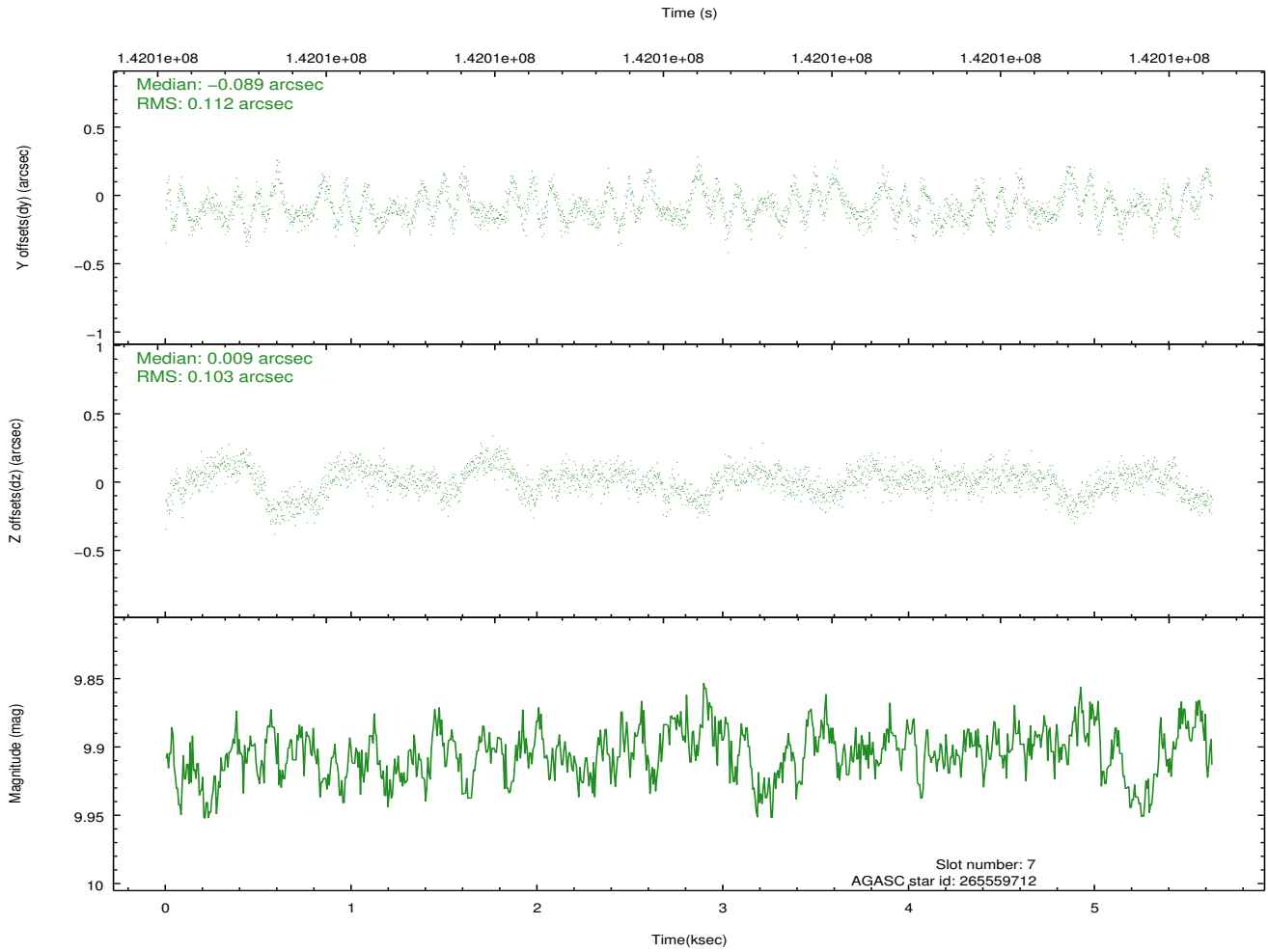
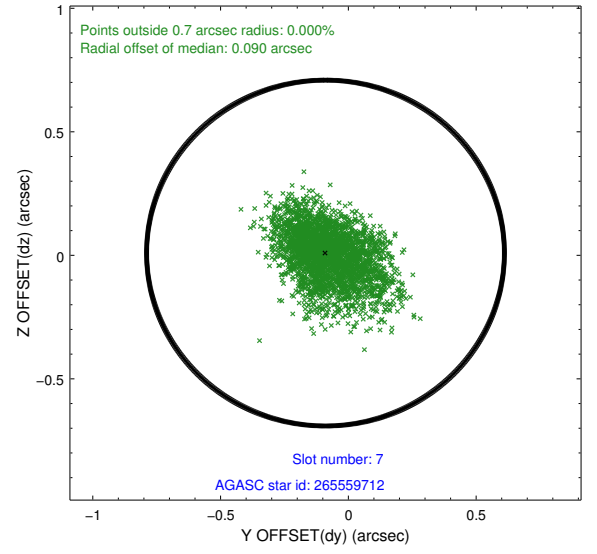
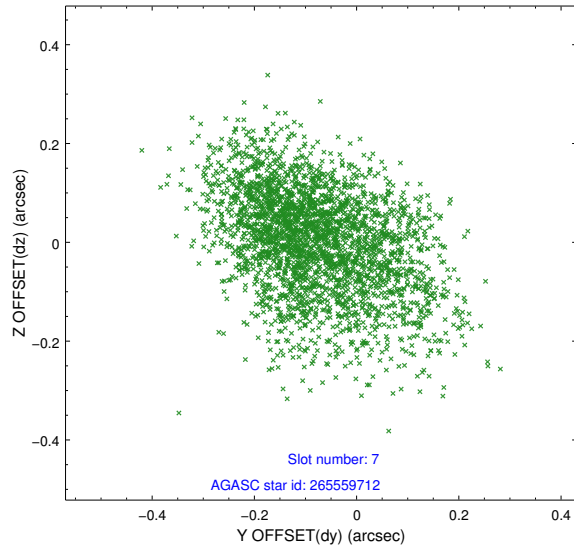
2.4.3 Slot 5



2.4.4 Slot 6

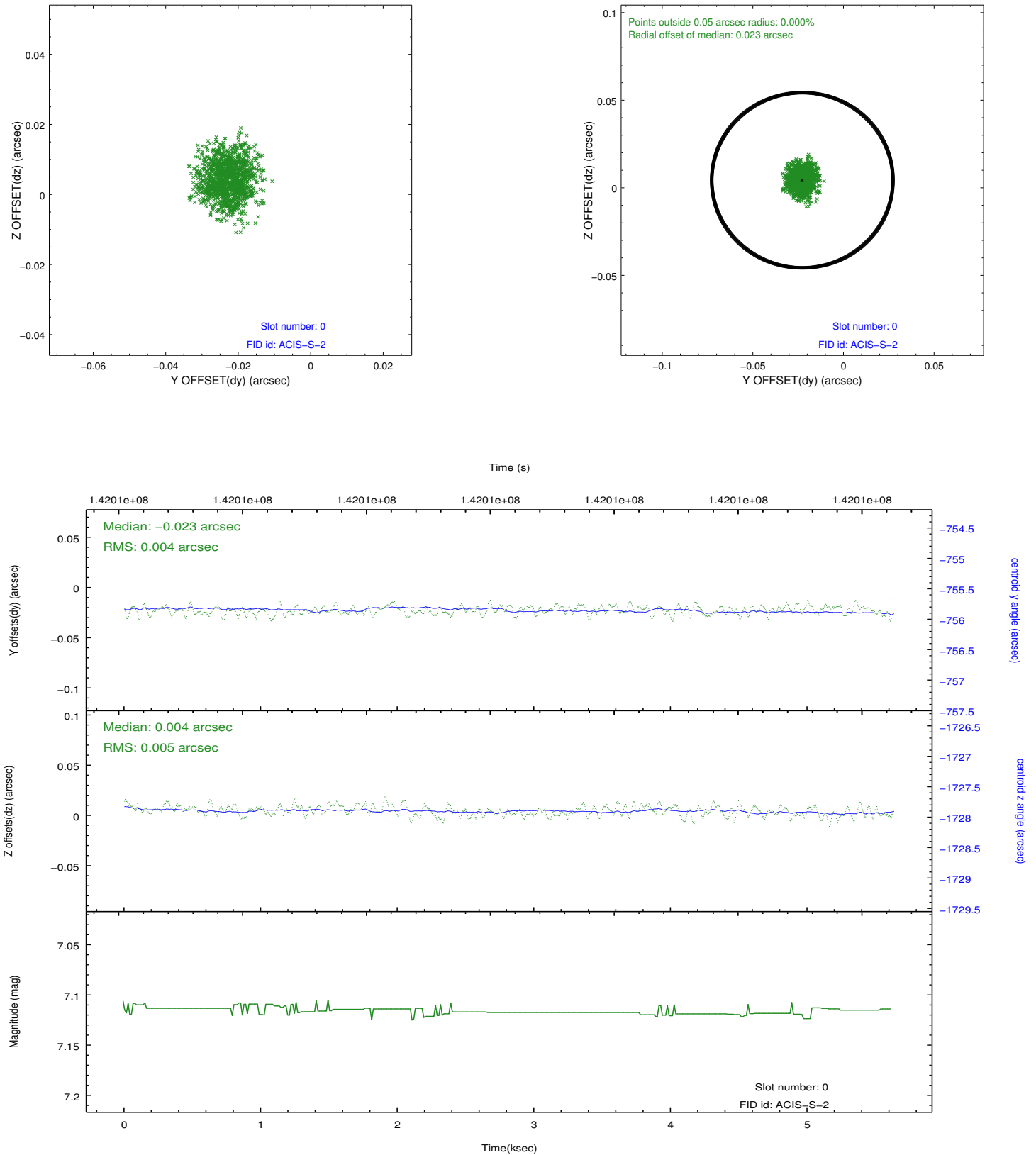


2.4.5 Slot 7

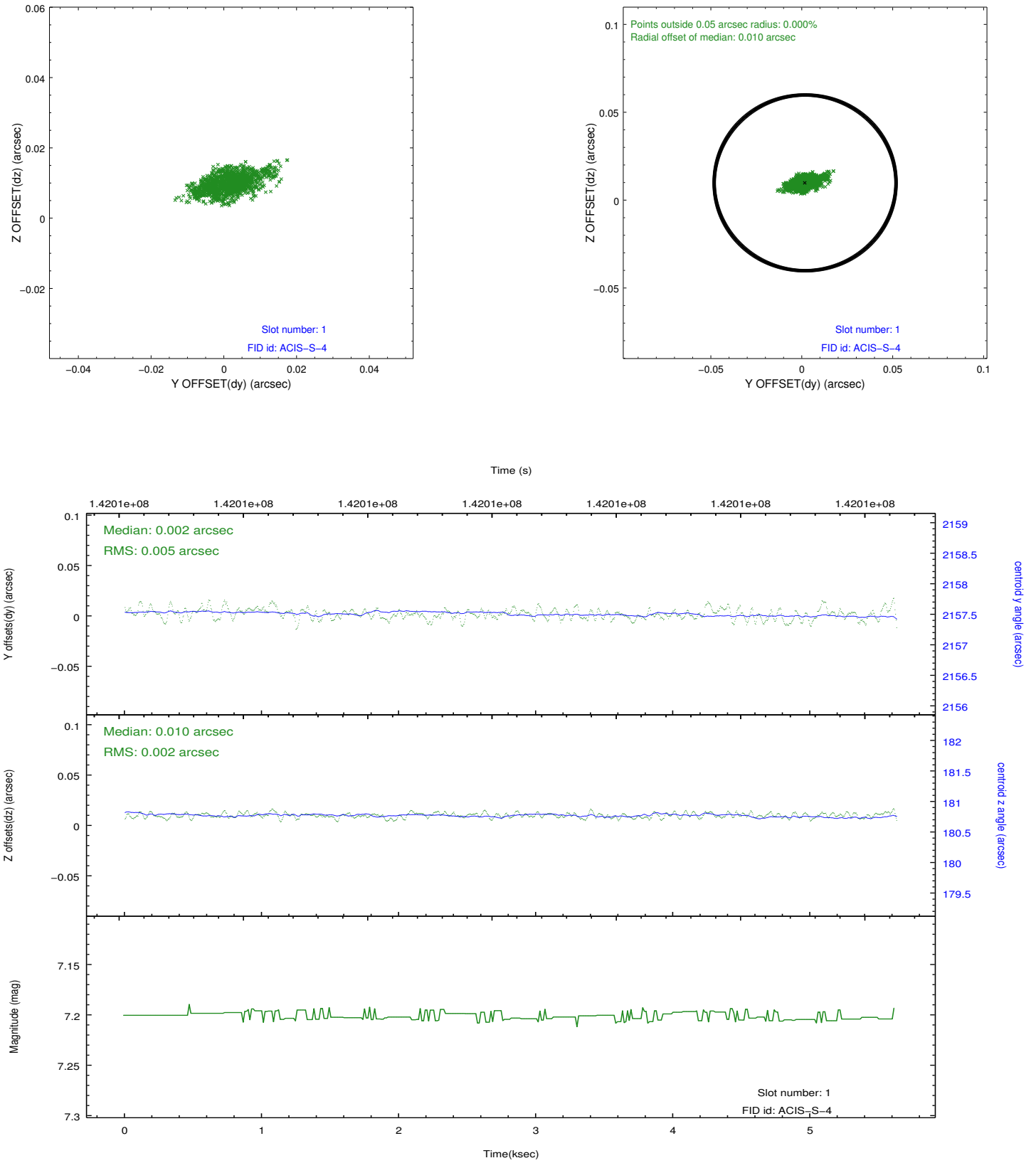


2.5 FID Slots

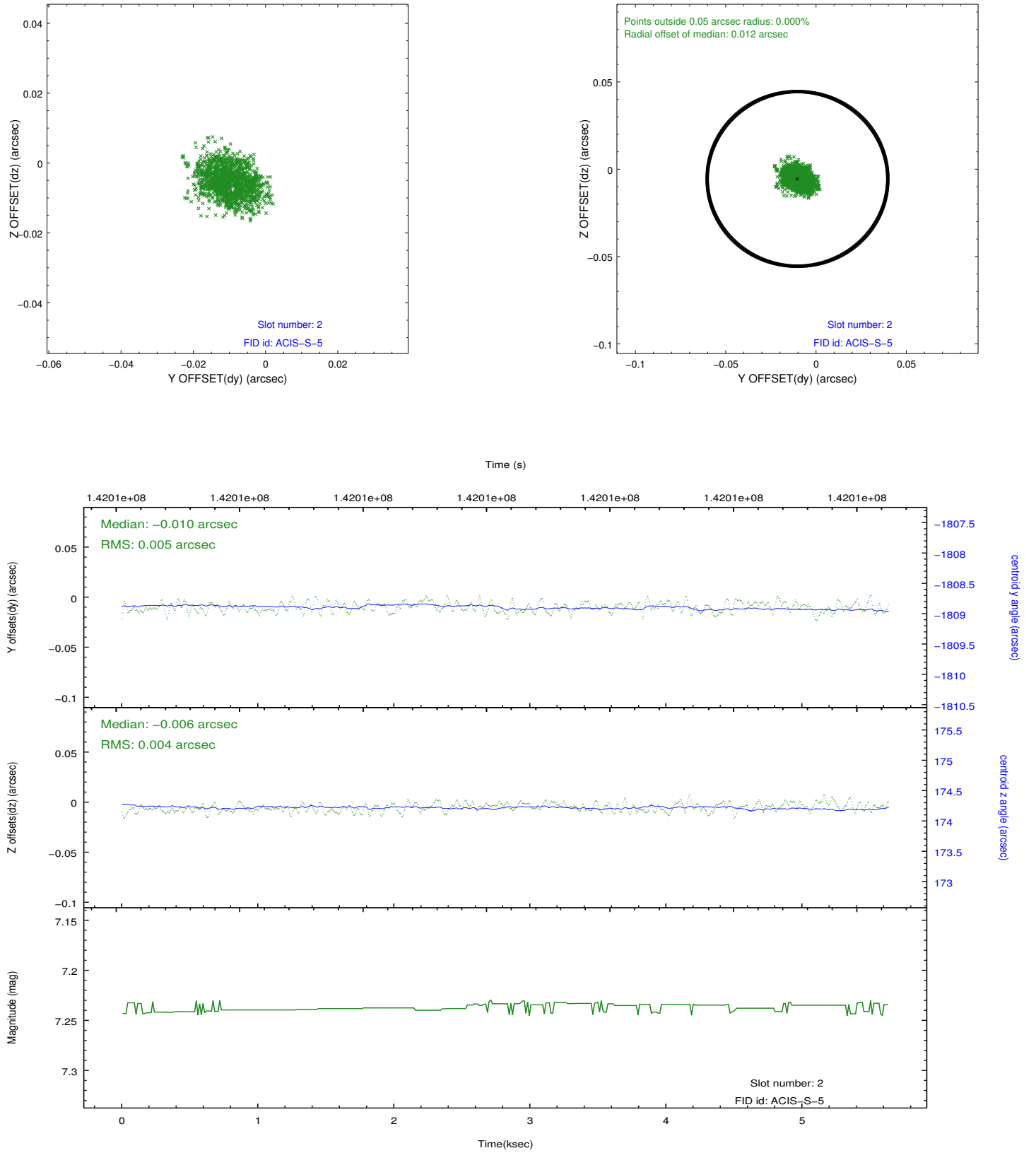
2.5.1 Slot 0



2.5.2 Slot 1



2.5.3 Slot 2



A Summary

A.1 Status

V&V Scientist	Jen Lauer
V&V Date (YYYY-MM-DD)	2012.10.19
V&V Edition	1
V&V Disposition and Status	OK
V&V Charge Time	4.963

A.2 Comments

Joint Proposal: NOAO