

V&V Reference Report

L2 ASCDS Version : 8.4.5

Observation 3258 - L2 Version 3
Chandra X-Ray Center

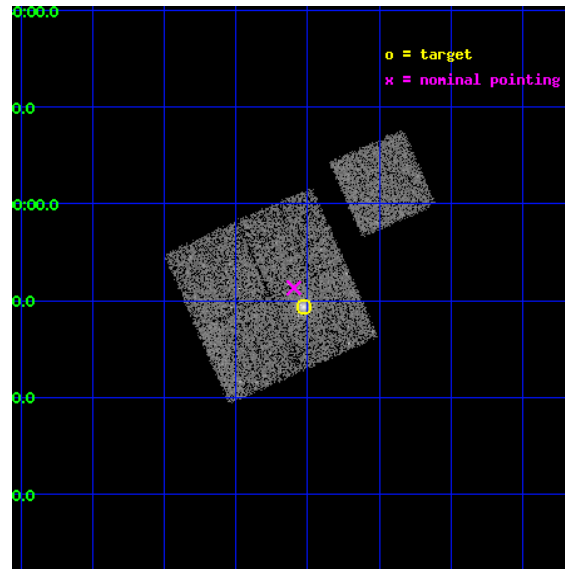
L2 Processing Date : Oct 19 2012

Contents

1	Front	2
2	OBI	3
2.1	OBI	3
2.1.1	Images	3
2.1.2	Bias	3
2.1.3	Parameters	4
2.1.4	Events	4
2.2	Compared Parameters	5
2.3	Aspect	6
2.4	Star Slots	9
2.4.1	Slot 3	9
2.4.2	Slot 4	10
2.4.3	Slot 5	11
2.4.4	Slot 6	12
2.4.5	Slot 7	13
2.5	FID Slots	14
2.5.1	Slot 0	14
2.5.2	Slot 1	15
2.5.3	Slot 2	16
A	Summary	17
A.1	Status	17
A.2	Comments	17

1 Front

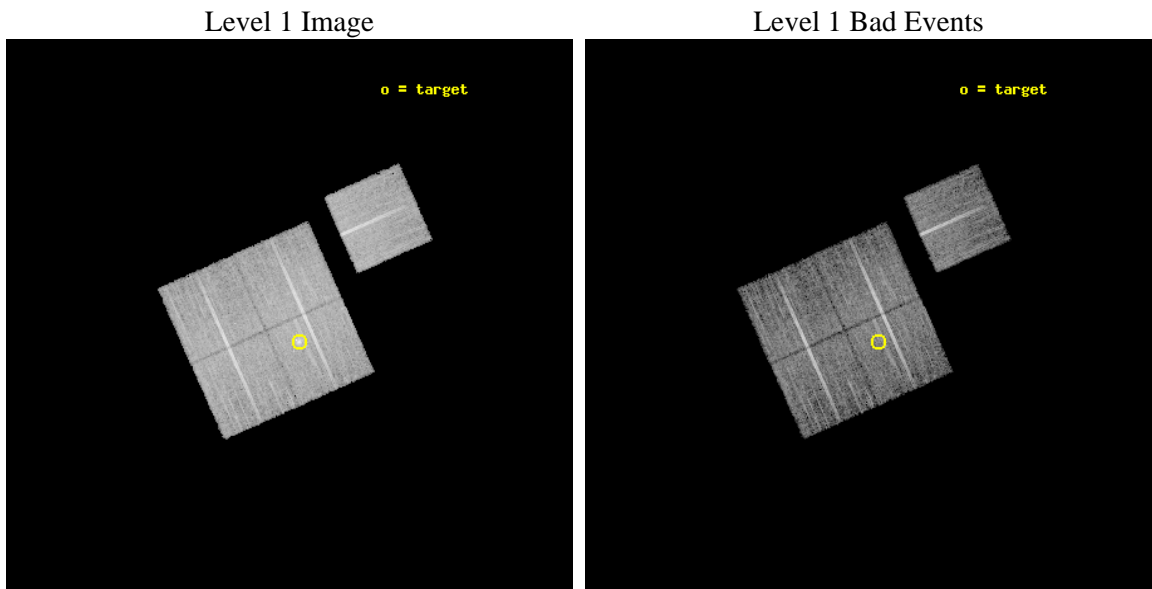
seq_num	800258	Sequence number
obs_id	3258	Observation id
title	OBSERVATION OF MACS CLUSTERS, 0.45	Proposal title
observer	DR. LEON VANSPEYBROECK	Principal investigator
object	MACS-J1311.0-0310	Source name
dtcycle	0	
cycle	P	events from which exps? Prim/Second/Both
ra_targ	197.757083	Observer's specified target RA [deg]
dec_targ	-3.178056	Observer's specified target Dec [deg]
ra_nom	197.77411747971	Nominal RA [deg]
dec_nom	-3.1444992359147	Nominal Dec [deg]
roll_nom	66.027760173236	Nominal Roll [deg]
revision	3	Processing version of data
ontime	15115.599970907	Sum of GTIs [s]
livetime	14918.103529344	Livetime [s]
ontime0	15115.599970907	Sum of GTIs [s]
ontime1	15115.599970907	Sum of GTIs [s]
ontime2	15112.459000677	Sum of GTIs [s]
ontime3	15115.599970907	Sum of GTIs [s]
ontime6	15112.459030569	Sum of GTIs [s]
l2events	36093	Number of level 2 events



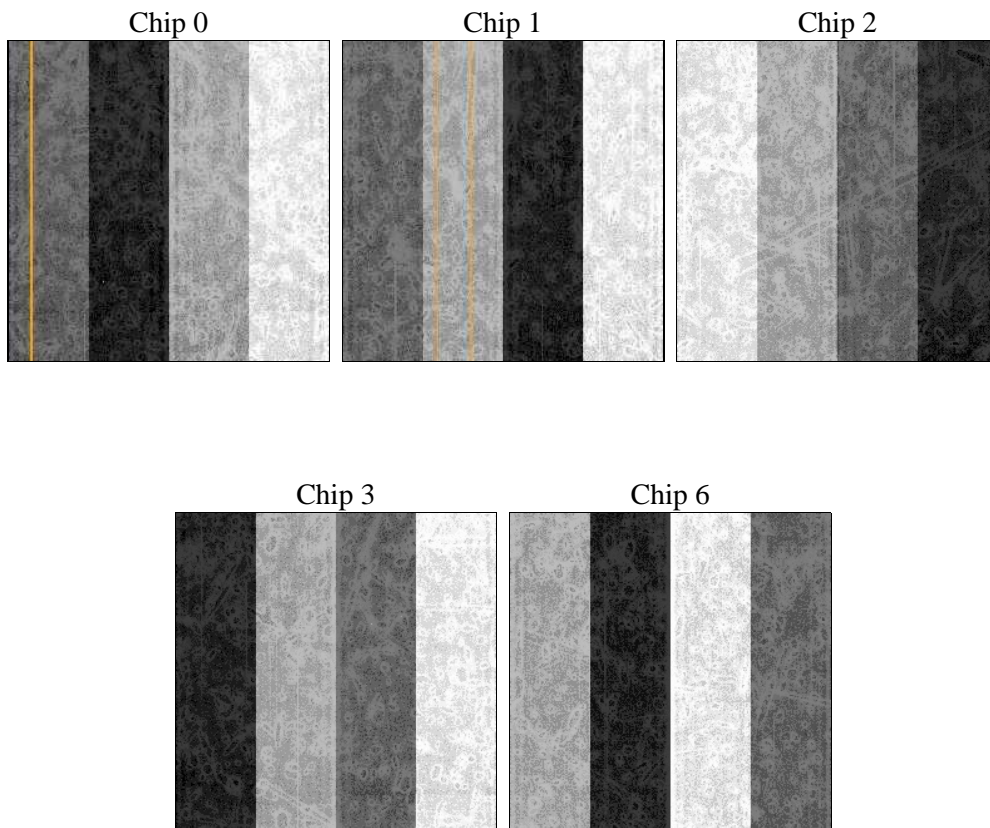
2 OBI

2.1 OBI

2.1.1 Images



2.1.2 Bias



2.1.3 Parameters

obi_num	0	Obi number	sched_exp_time	15000.000000	[s] Scheduled observation exposure time
ascdsver	8.4.5	Processing system revision	ontime	15115.599970907	Sum of GTIs [s]
caldsver	4.5.2	 	ontime0	15115.599970907	Sum of GTIs [s]
date	2012-10-19T05:41:30	Date and time of file creation	ontime1	15115.599970907	Sum of GTIs [s]
revision	3	Processing version of data	ontime2	15112.459000677	Sum of GTIs [s]
			ontime3	15115.599970907	Sum of GTIs [s]
			ontime6	15112.459030569	Sum of GTIs [s]
			l1events	397745	Number of level 1 events

2.1.4 Events

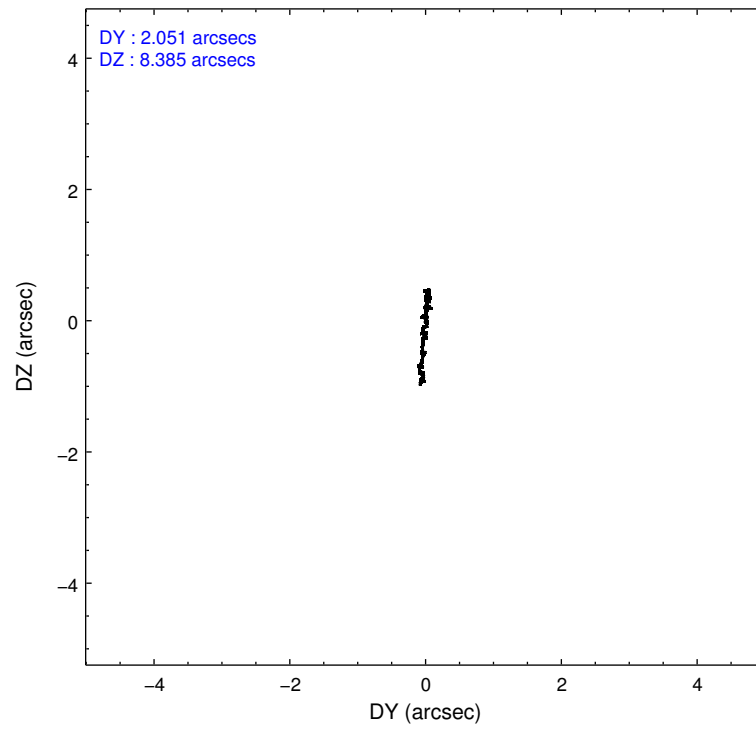
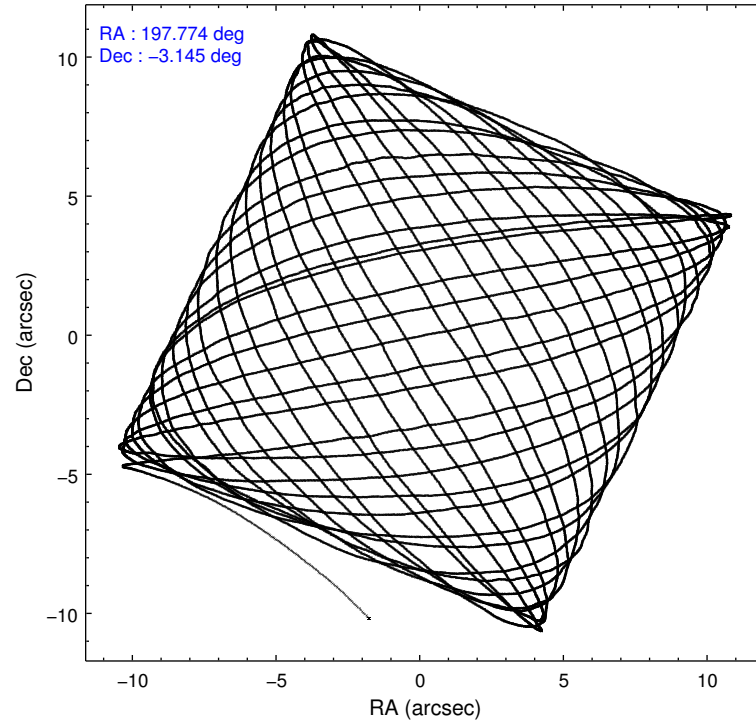
	ccd 0	ccd 1	ccd 2	ccd 3	ccd 6
level 1 events	75294	76300	82340	82932	80879
rejected events	67015	67473	74192	72866	72665
rejected %	89%	88%	90%	87%	89%

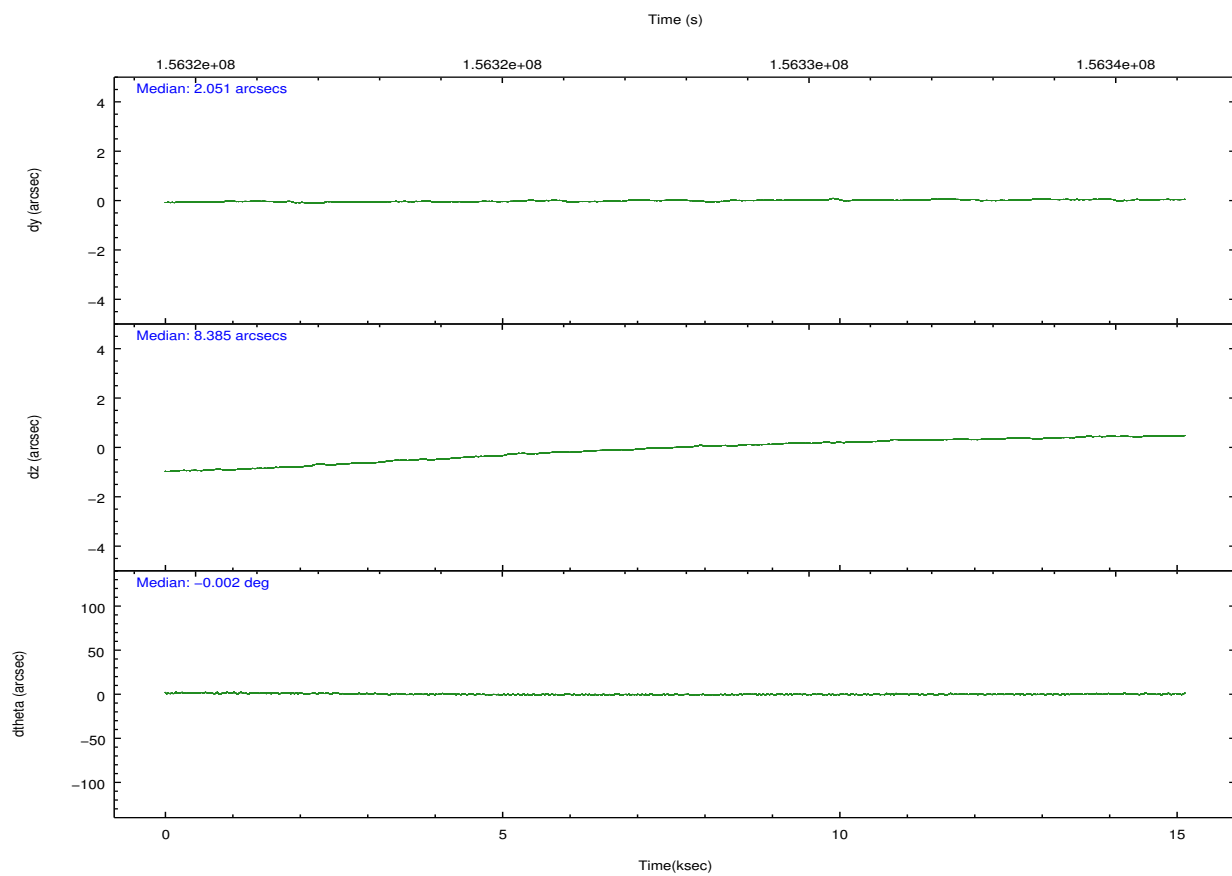
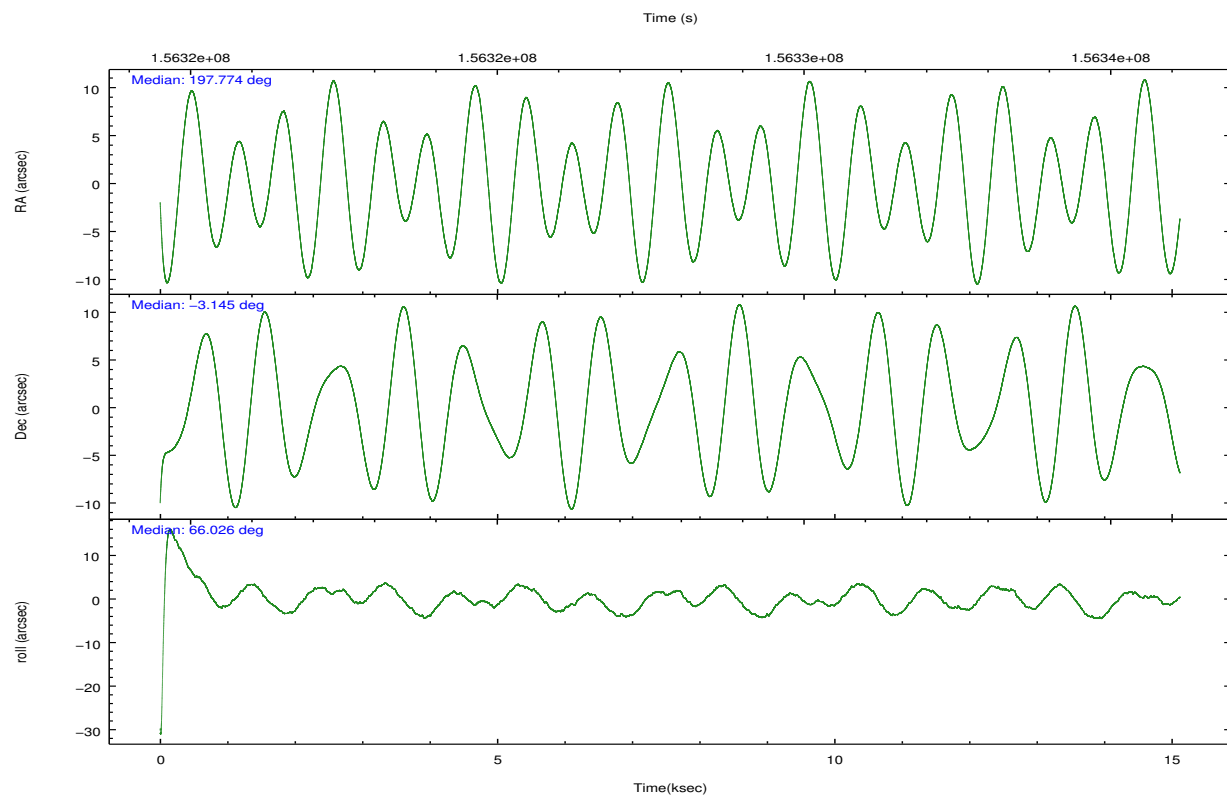
	ccd 0	ccd 1	ccd 2	ccd 3	ccd 6
grade 0 events	3075	3408	3150	4914	3186
	4%	4%	3%	5%	3%
grade 1 events	28	28	43	52	30
	0%	0%	0%	0%	0%
grade 2 events	1892	1824	1888	1826	1690
	2%	2%	2%	2%	2%
grade 3 events	939	1018	872	957	928
	1%	1%	1%	1%	1%
grade 4 events	870	1033	958	1009	900
	1%	1%	1%	1%	1%
grade 5 events	2656	2885	2598	3000	2966
	3%	3%	3%	3%	3%
grade 6 events	1639	1736	1447	1517	1660
	2%	2%	1%	1%	2%
grade 7 events	64195	64368	71384	69657	69519
	85%	84%	86%	83%	85%

2.2 Compared Parameters

Parameter	Planned	Actual	Parameter	Planned	Actual
Instrument	ACIS	ACIS	Obspar format version number	7	7
Detector	ACIS-01236	ACIS-01236	Obspar file type	PREDICTED	ACTUAL
Grating	NONE	NONE	Obspar update status	NONE	UPDATED
Data mode	VFAINT	VFAINT	Number of optional ACIS chips dropped	0	0
Observation mode	POINTING	POINTING	On-chip summing requested	N	N
[deg] Pointing RA	197.777145	197.774117479711	Subarray requested	NONE	NONE
[deg] Pointing Dec	-3.171698	-3.144499235914749	Alternating exposures requested	N	N
[deg] Pointing Roll	65.819286	66.02776017323642	[s] Primary exposure time	0.000000	3.1
[mm] SIM focus pos	-0.782348	-0.7809083437167272			
[mm] SIM defocus	0	0.001439871863259334			
[mm] SIM translation stage pos	-227.742463	-227.734108438797			
[mm] SIM translation stage offset	-5.85	-5.858344564132665			
[s] Observation start time (MET)	156320371.184000	156319271.76935			
Observation start date	2002-12-15T06:18:27	2002-12-15T06:01:11			
[s] Observation end time (MET)	156335371.184000	156335790.67004			
Observation end date	2002-12-15T10:28:27	2002-12-15T10:36:30			
Read mode	TIMED	TIMED			

2.3 Aspect



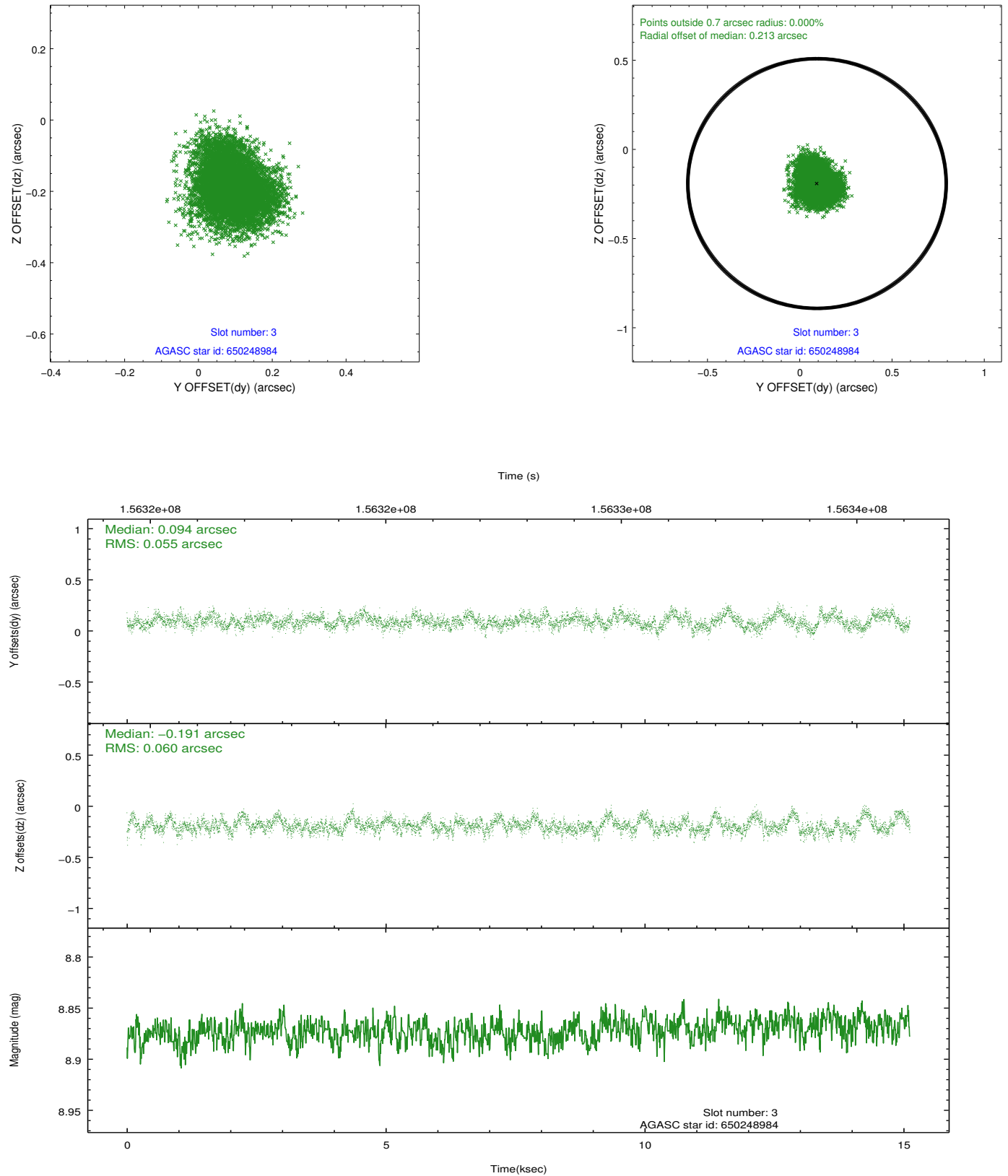


Slot Statistics

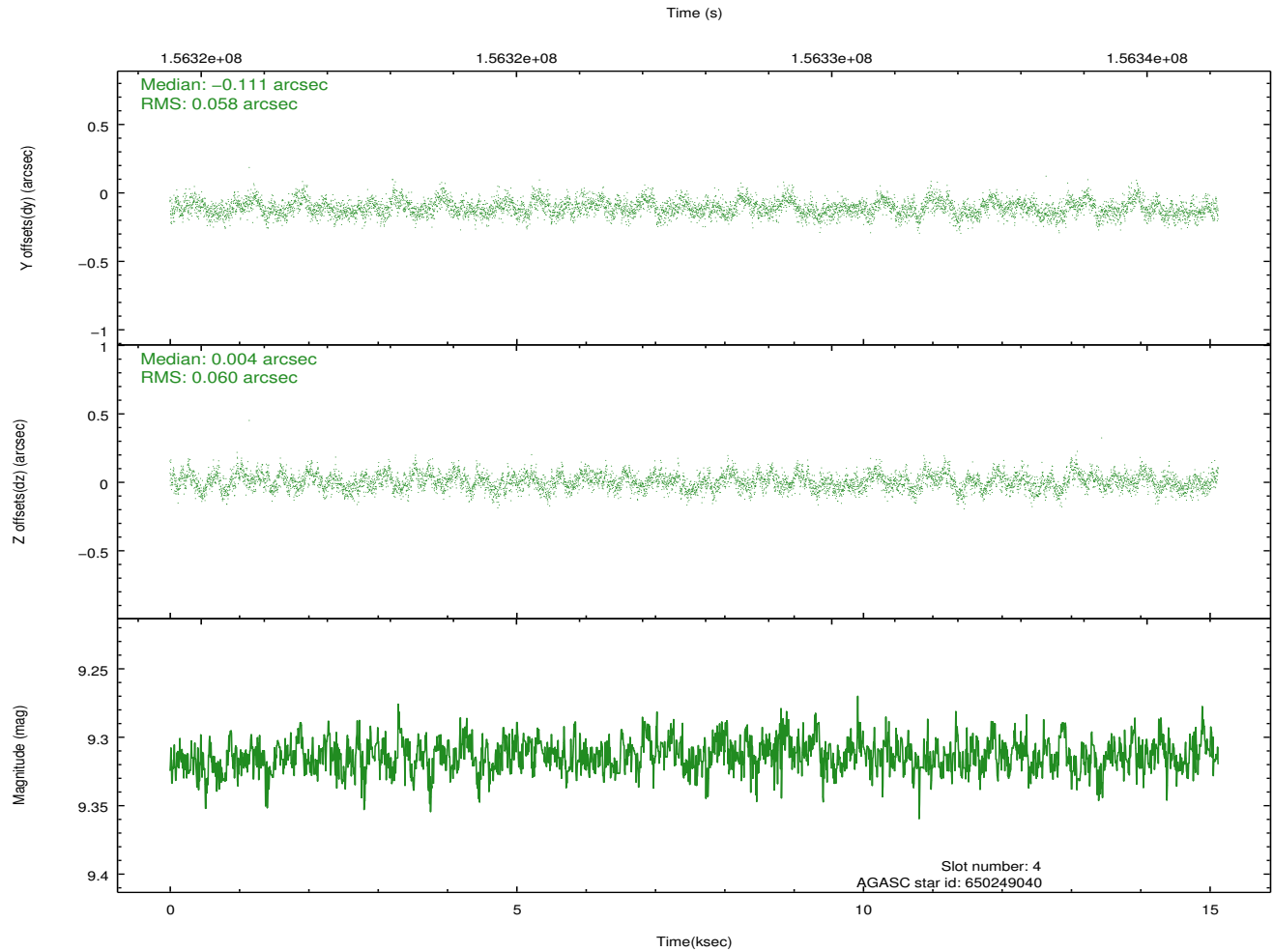
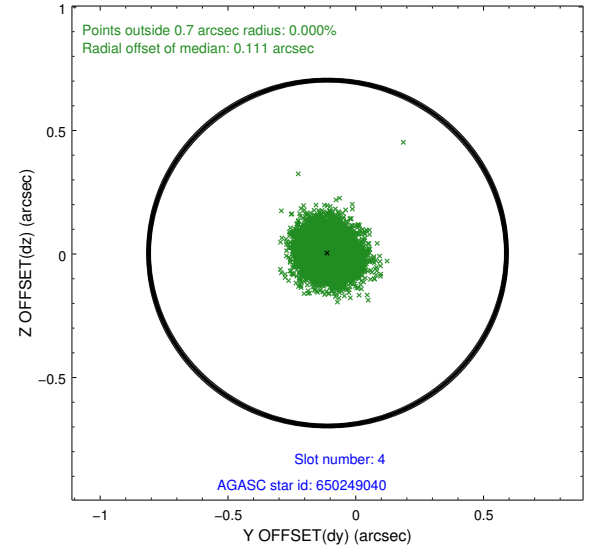
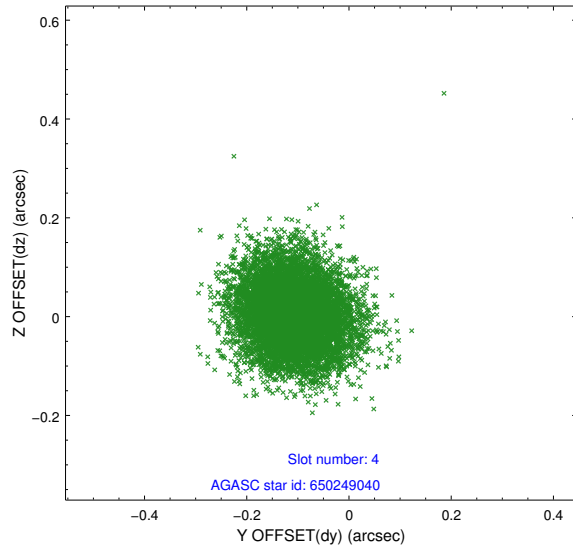
slot	status	id	mag	n_pts	med_dy	med_dz	dr1	dr2	ra	dec	mean_y	mean_z
0	FID	ACIS-I-1	7.24	3687	0.027	0.002	0.010	0.016	0.000000	0.000000	937.69	-951.94
1	FID	ACIS-I-5	7.23	3689	-0.136	0.055	0.008	0.016	0.000000	0.000000	-1810.41	945.43
2	FID	ACIS-I-6	7.25	3688	0.017	0.014	0.012	0.019	0.000000	0.000000	402.91	1590.22
3	GUIDE	650248984	8.87	7371	0.094	-0.191	0.087	0.140	197.683115	-3.291898	-531.49	129.81
4	GUIDE	650249040	9.31	7374	-0.111	0.004	0.089	0.143	197.994714	-3.007393	861.41	-471.85
5	GUIDE	650251064	8.35	7375	0.143	0.005	0.059	0.096	197.822546	-3.915433	-2373.80	-1246.31
6	GUIDE	650249048	9.60	7367	-0.111	0.073	0.082	0.135	198.015025	-2.975159	996.75	-491.29
7	GUIDE	650250512	8.25	7375	-0.014	0.110	0.069	0.116	198.203283	-3.894601	-1745.66	-2463.24

2.4 Star Slots

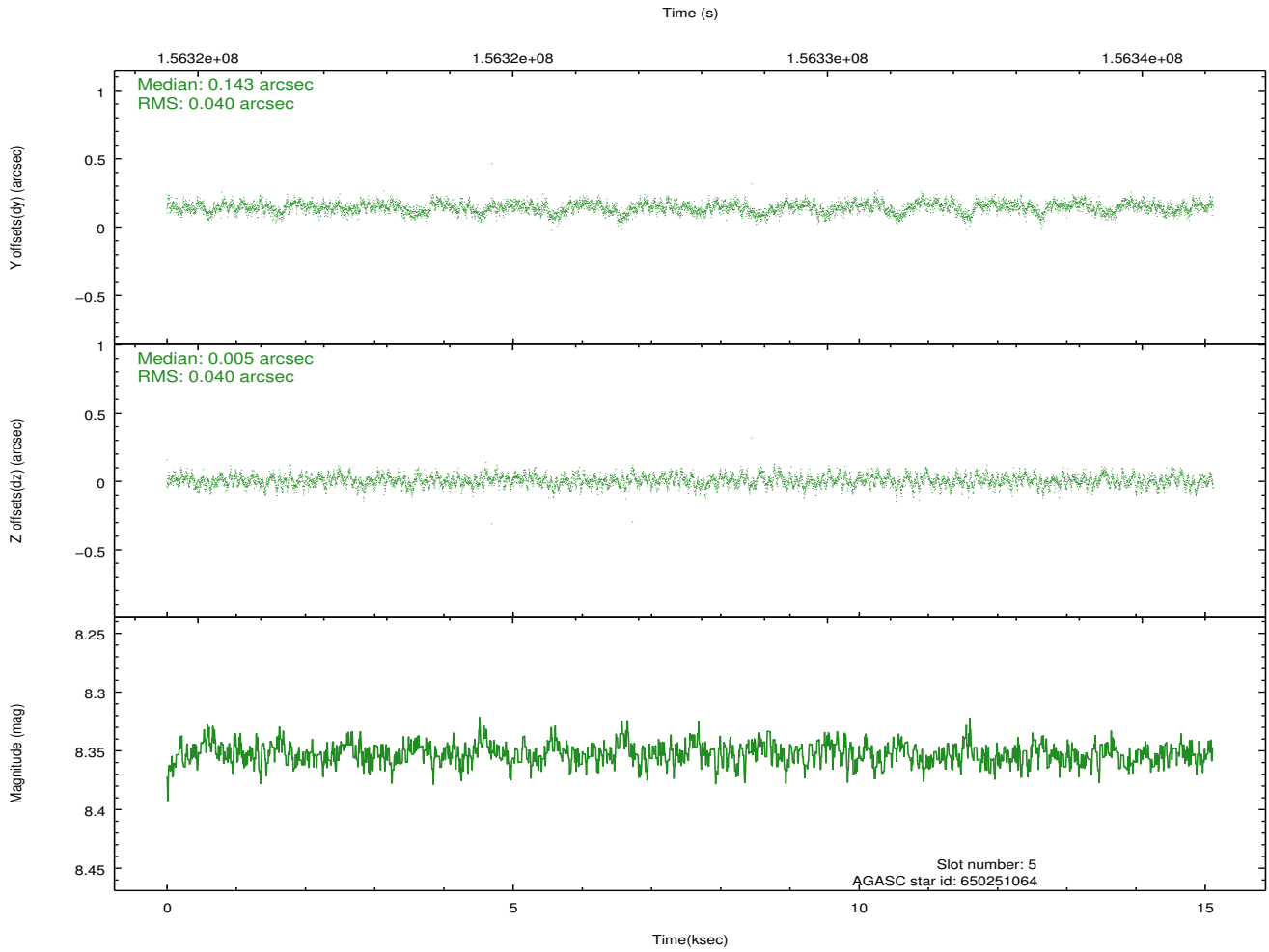
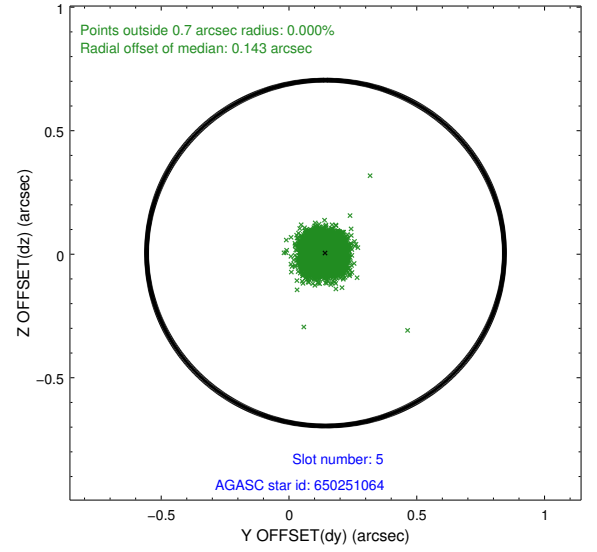
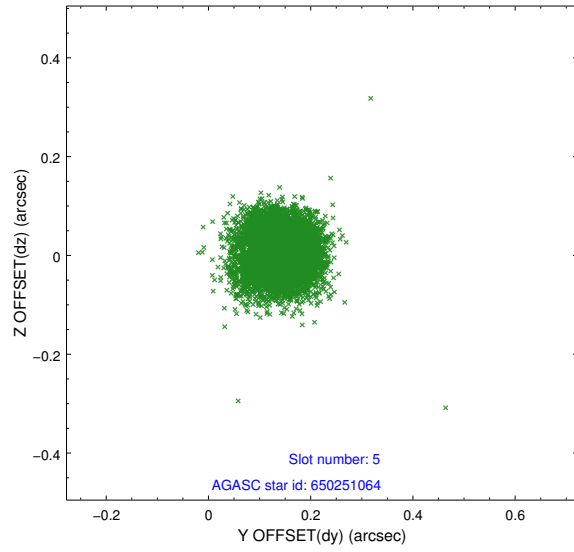
2.4.1 Slot 3



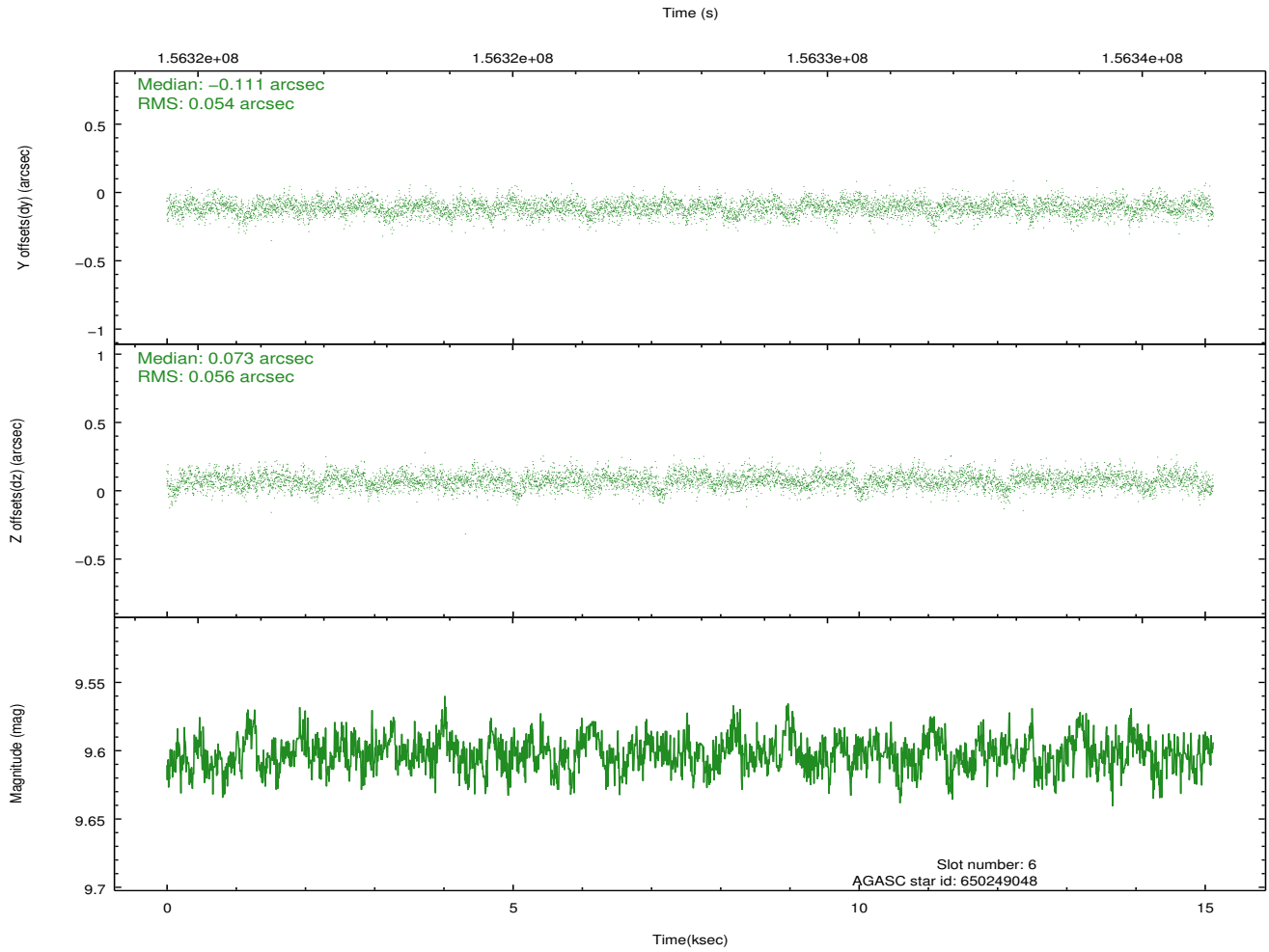
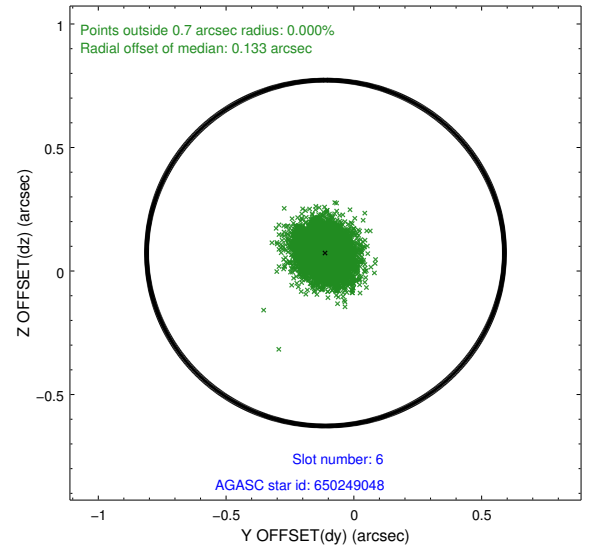
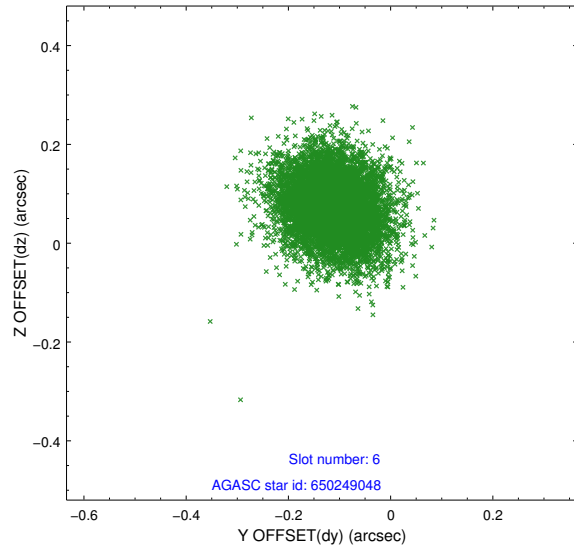
2.4.2 Slot 4



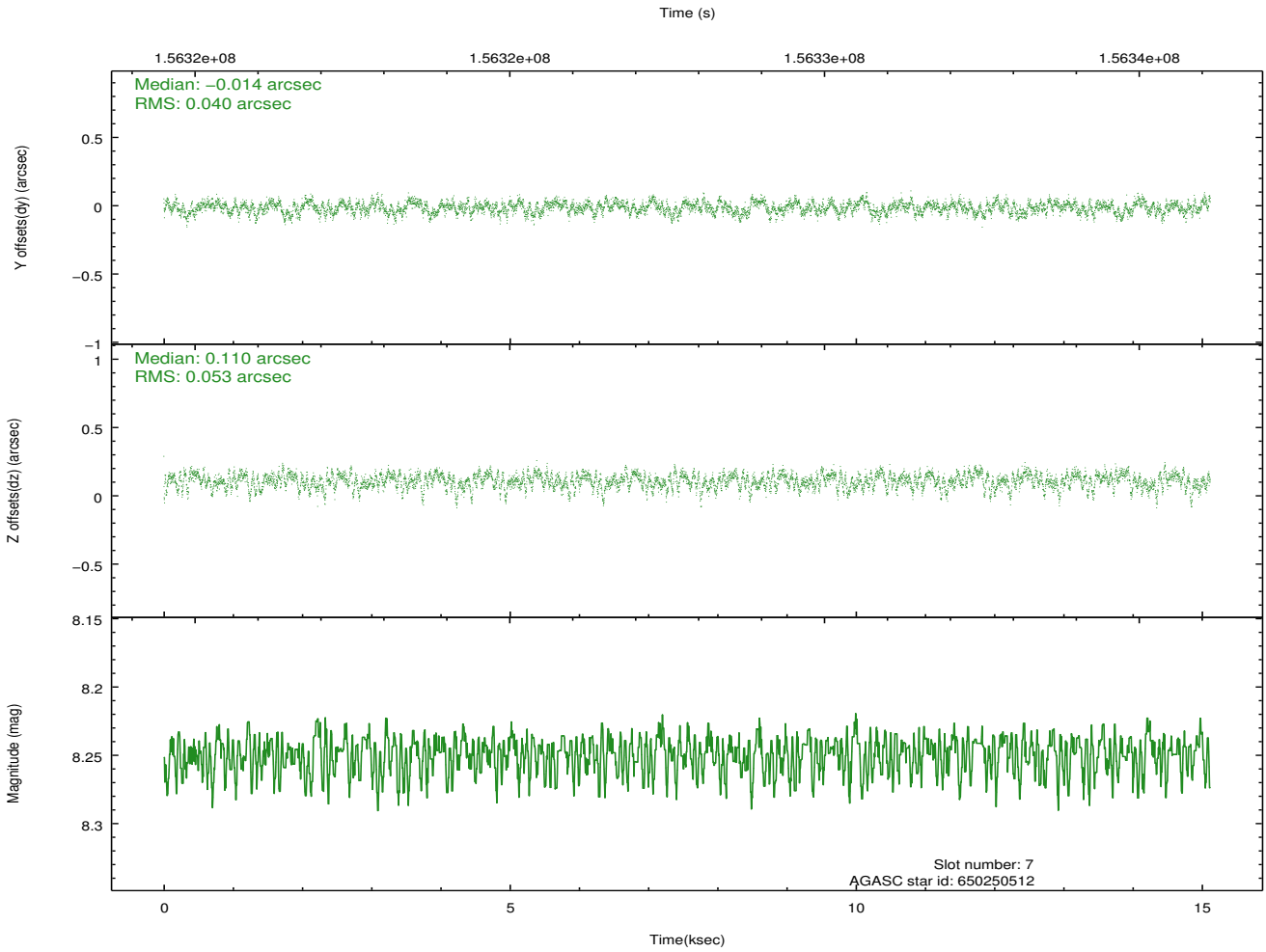
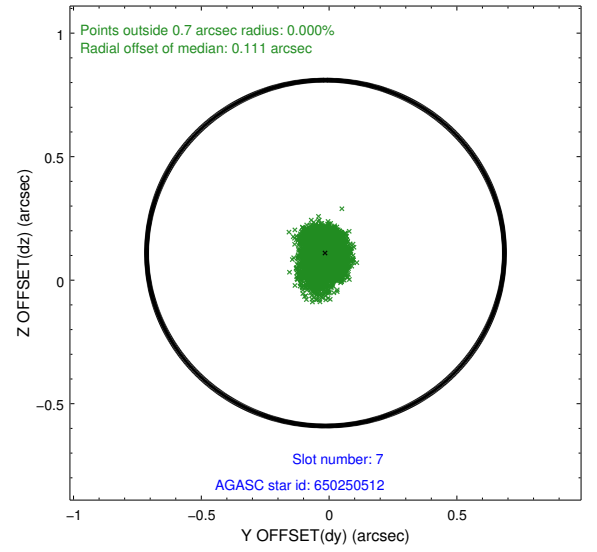
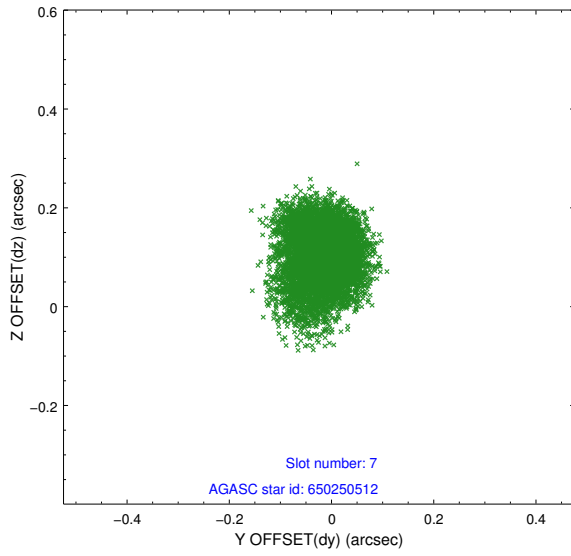
2.4.3 Slot 5



2.4.4 Slot 6

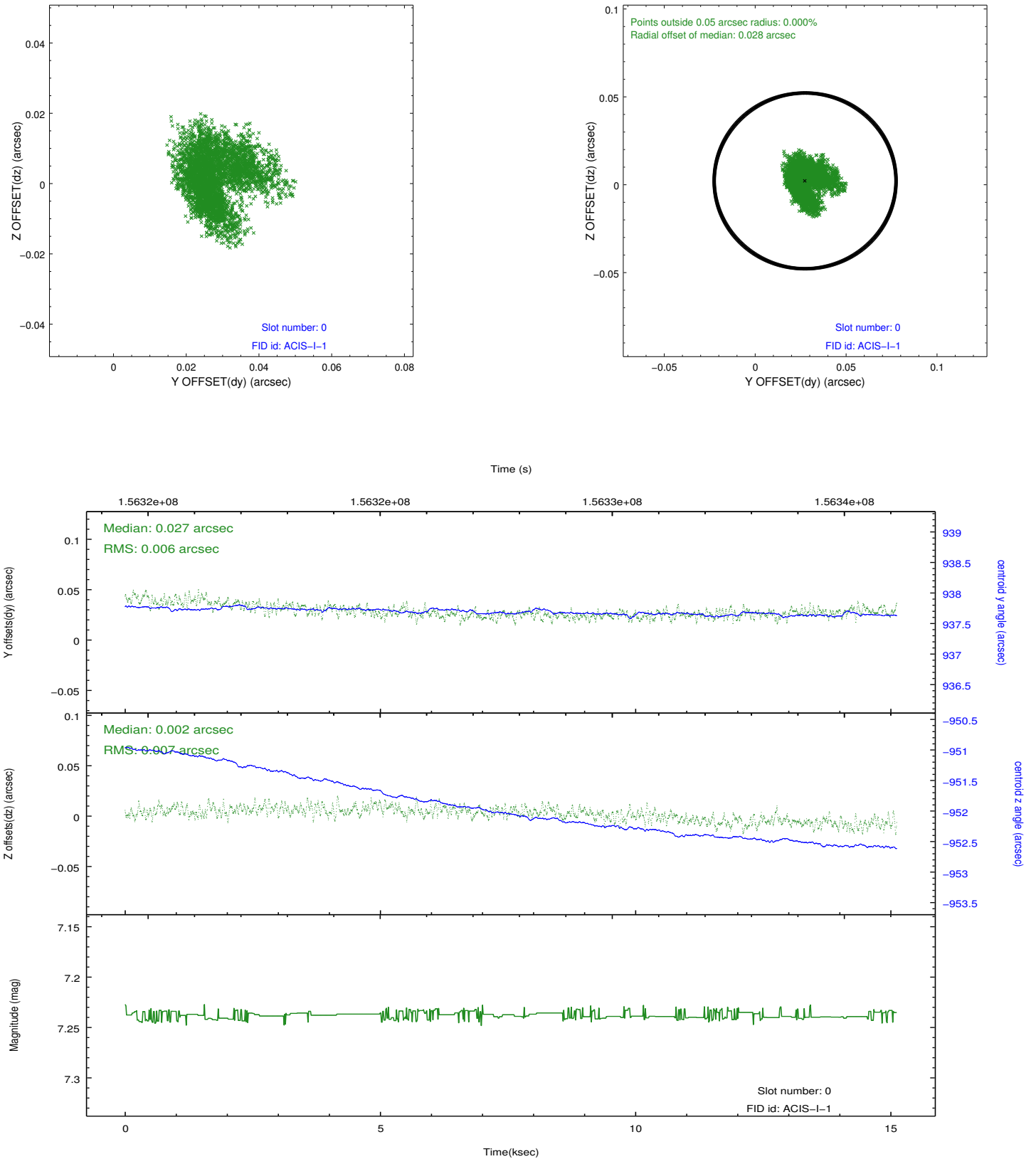


2.4.5 Slot 7

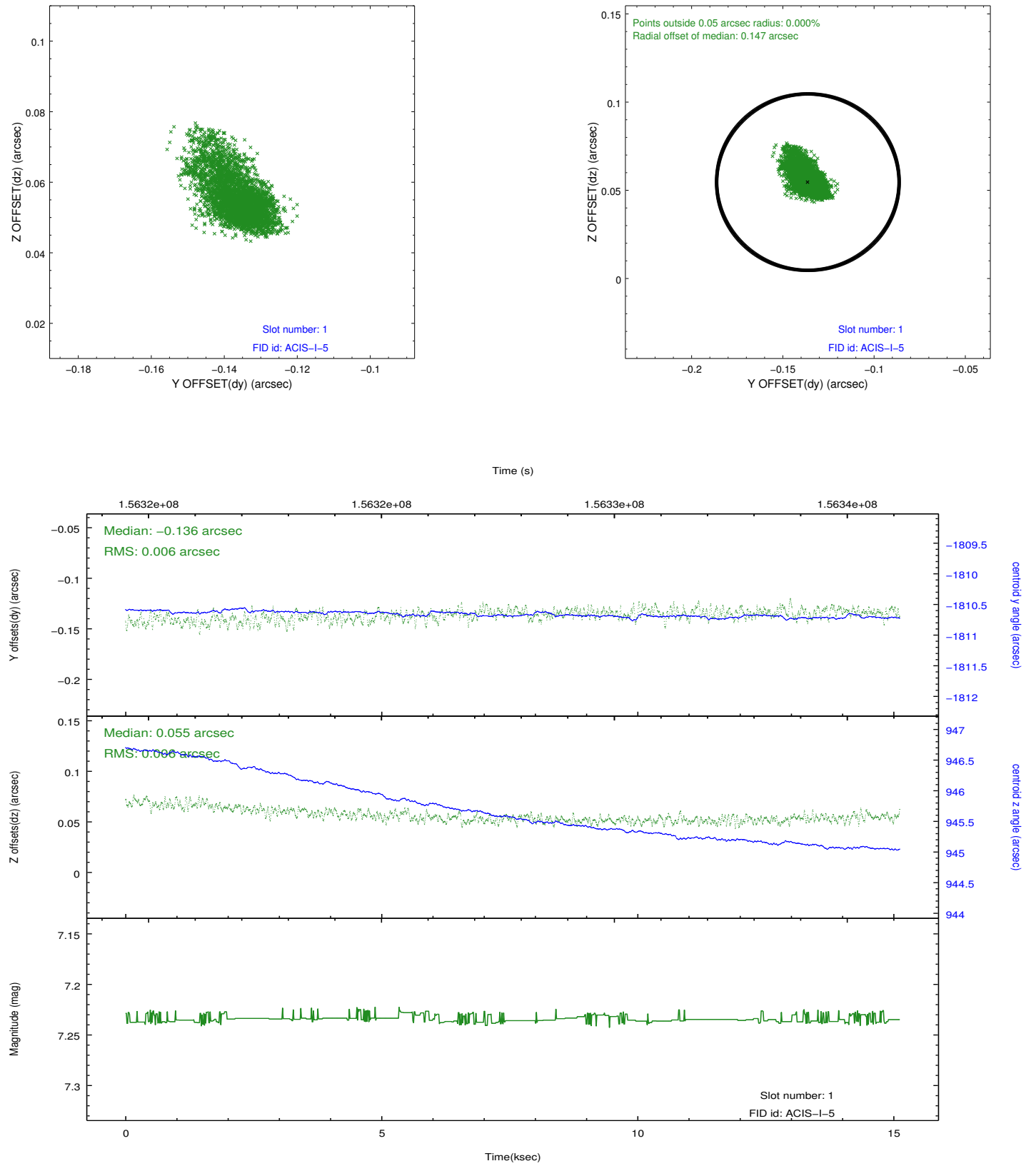


2.5 FID Slots

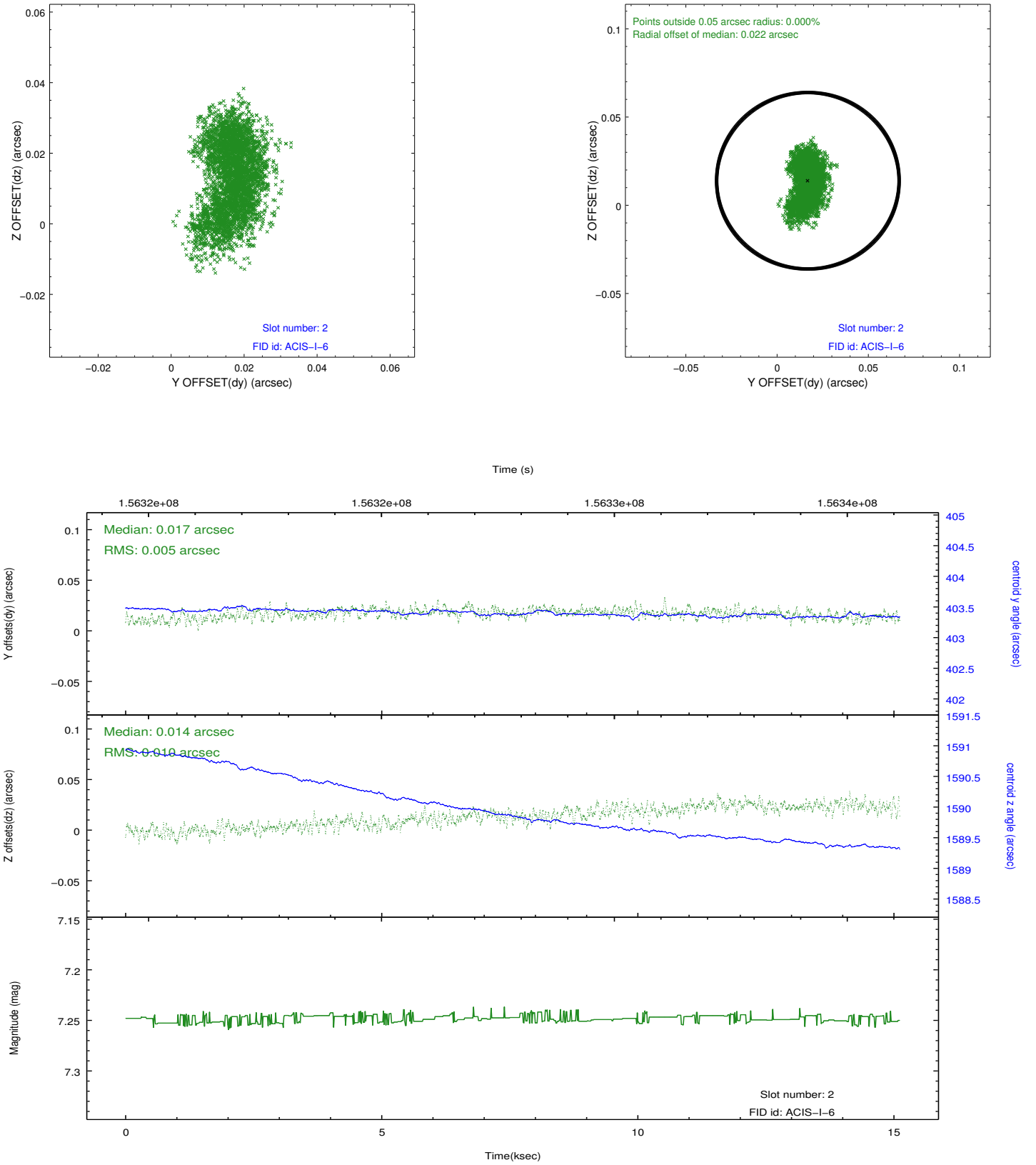
2.5.1 Slot 0



2.5.2 Slot 1



2.5.3 Slot 2



A Summary

A.1 Status

V&V Scientist	Jen Lauer
V&V Date (YYYY-MM-DD)	2012.10.31
V&V Edition	1
V&V Disposition and Status	OK
V&V Charge Time	15.115

A.2 Comments