

V&V Reference Report

L2 ASCDS Version : 8.4.5

Observation 3238 - L2 Version 3
Chandra X-Ray Center

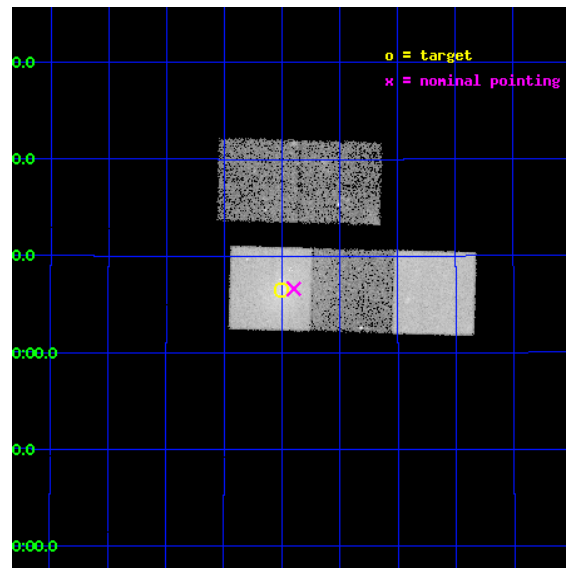
L2 Processing Date : Oct 8 2012

Contents

1	Front	2
2	OBI	3
2.1	OBI	3
2.1.1	Images	3
2.1.2	Bias	3
2.1.3	Parameters	4
2.1.4	Events	4
2.2	Compared Parameters	5
2.3	Aspect	6
2.4	Star Slots	9
2.4.1	Slot 3	9
2.4.2	Slot 4	10
2.4.3	Slot 5	11
2.4.4	Slot 6	12
2.4.5	Slot 7	13
2.5	FID Slots	14
2.5.1	Slot 0	14
2.5.2	Slot 1	15
2.5.3	Slot 2	16
A	Summary	17
A.1	Status	17
A.2	Comments	17

1 Front

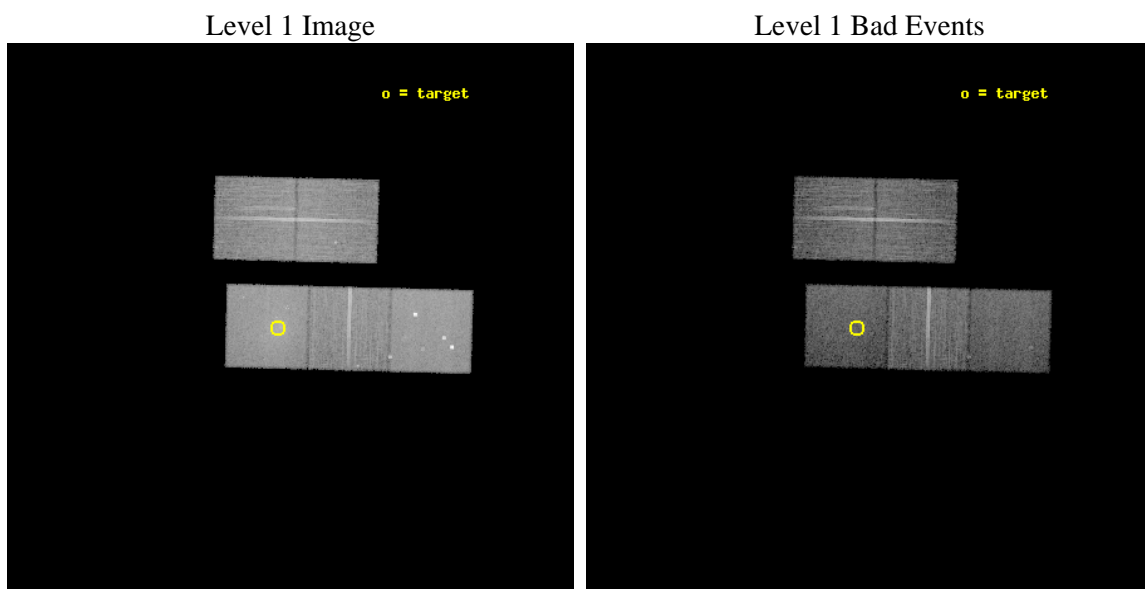
seq_num	800238	Sequence number
obs_id	3238	Observation id
title	THE CORE STRUCTURE OF THE LOWEST REDSHIFT STRONG LENSING CLUSTER	P
observer	Dr Haruyoshi Katayama	Principal investigator
object	ABELL 2124	Source name
dtcycle	0	
cycle	P	events from which exps? Prim/Second/Both
ra_targ	236.25	Observer's specified target RA [deg]
dec_targ	36.109167	Observer's specified target Dec [deg]
ra_nom	236.22430477932	Nominal RA [deg]
dec_nom	36.110367179423	Nominal Dec [deg]
roll_nom	181.46866802954	Nominal Roll [deg]
revision	3	Processing version of data
ontime	19607.49996227	Sum of GTIs [s]
livetime	19351.313540432	Livetime [s]
ontime2	19601.218041748	Sum of GTIs [s]
ontime3	19607.49996227	Sum of GTIs [s]
ontime5	19607.49996227	Sum of GTIs [s]
ontime6	19601.218011916	Sum of GTIs [s]
ontime7	19607.49996227	Sum of GTIs [s]
l2events	157942	Number of level 2 events



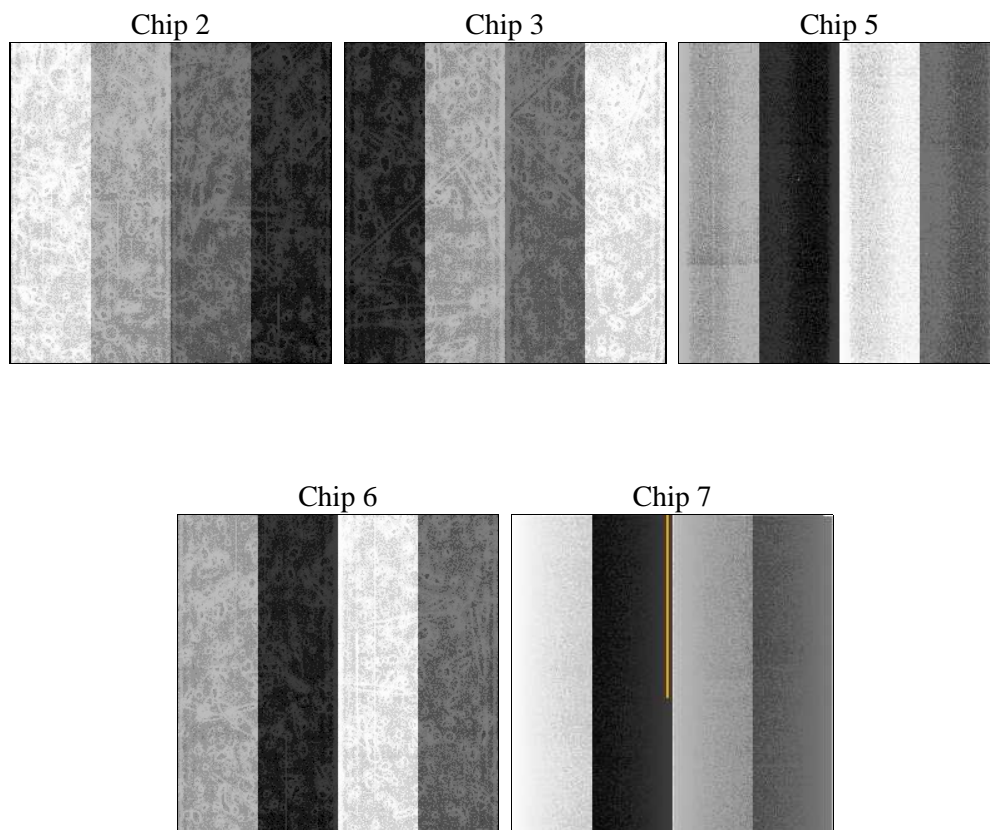
2 OBI

2.1 OBI

2.1.1 Images



2.1.2 Bias



2.1.3 Parameters

obi_num	0	Obi number	sched_exp_time	19500.000000	[s] Scheduled observation exposure time
ascdsver	8.4.5	Processing system revision	ontime	19607.49996227	Sum of GTIs [s]
caldsver	4.5.2	 	ontime2	19601.218041748	Sum of GTIs [s]
date	2012-10-08T05:46:11	Date and time of file creation	ontime3	19607.49996227	Sum of GTIs [s]
revision	3	Processing version of data	ontime5	19607.49996227	Sum of GTIs [s]
			ontime6	19601.218011916	Sum of GTIs [s]
			ontime7	19607.49996227	Sum of GTIs [s]
			l1events	576213	Number of level 1 events

2.1.4 Events

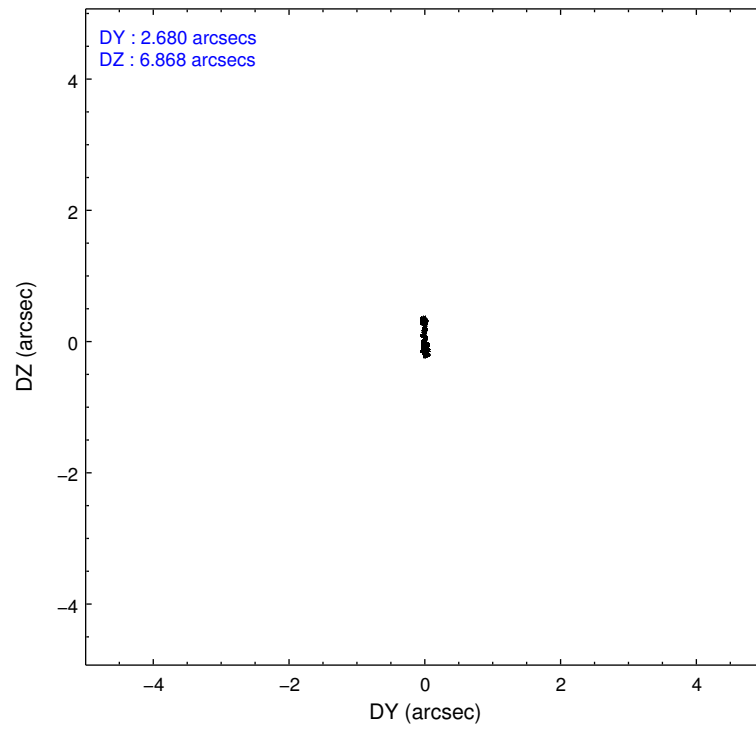
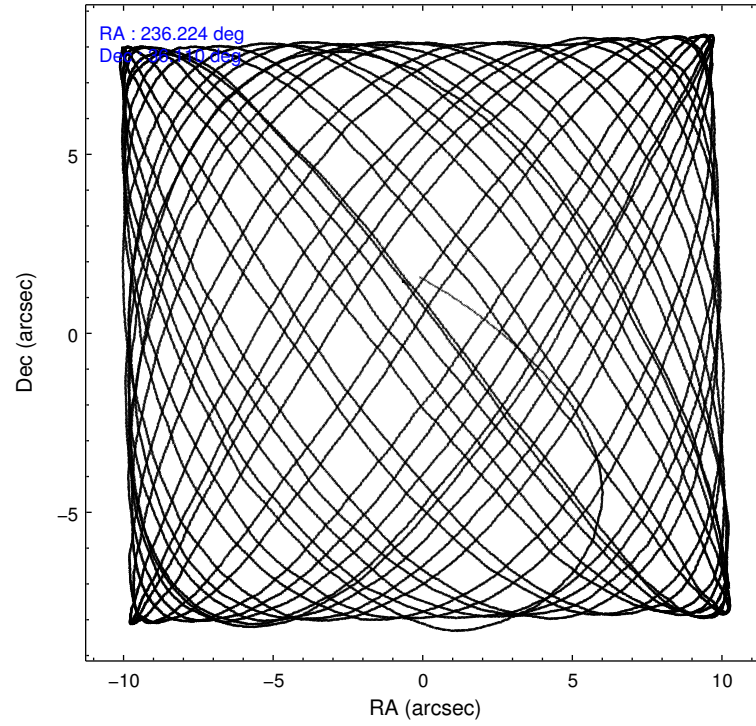
	ccd 2	ccd 3	ccd 5	ccd 6	ccd 7
level 1 events	102705	99157	139772	105409	129170
rejected events	91747	89592	65411	92269	58839
rejected %	89%	90%	46%	87%	45%

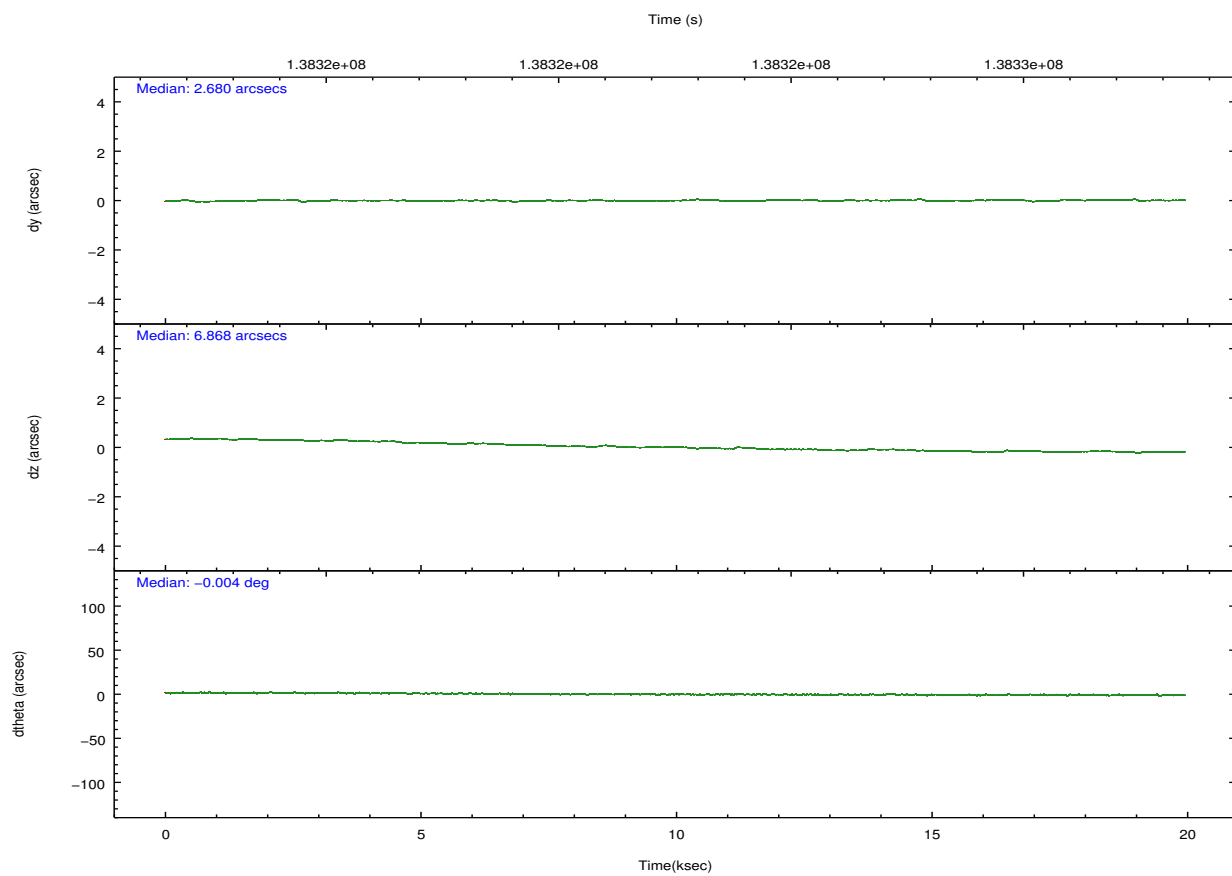
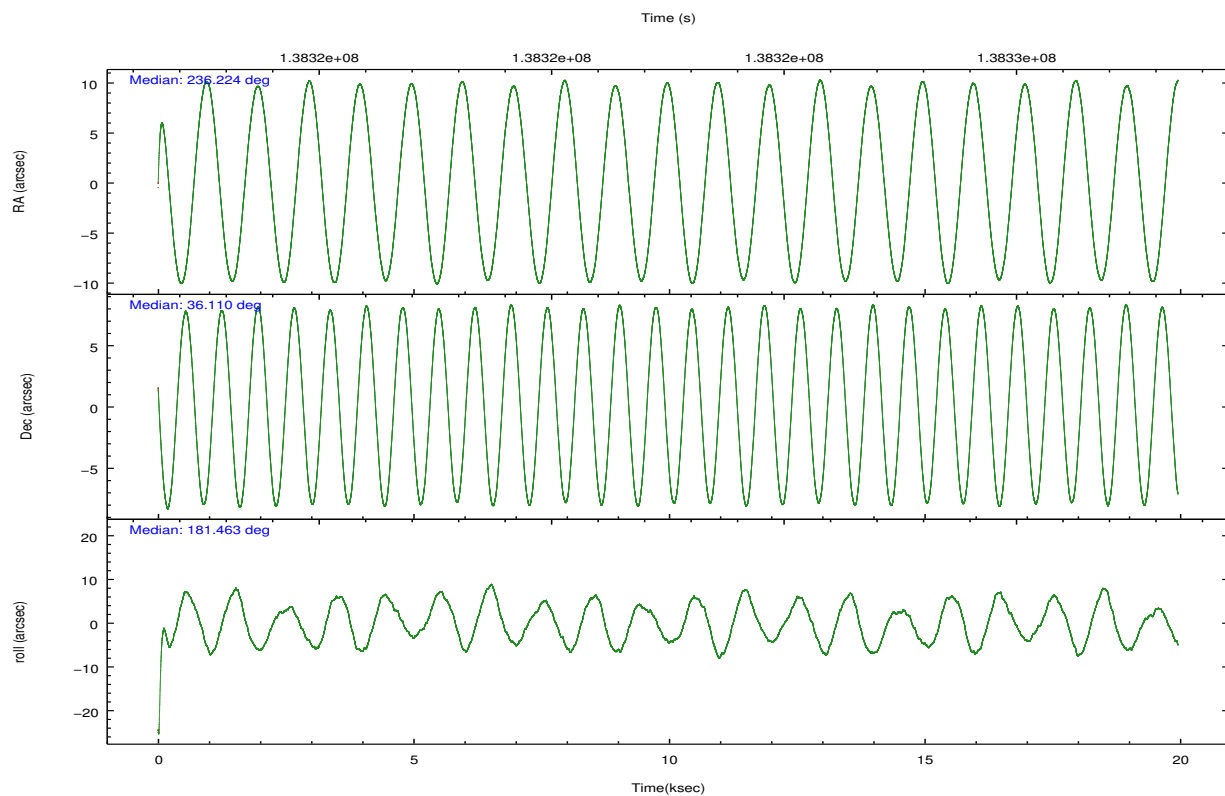
	ccd 2	ccd 3	ccd 5	ccd 6	ccd 7
grade 0 events	4658	3556	14198	6096	11486
	4%	3%	10%	5%	8%
grade 1 events	41	36	284	59	92
	0%	0%	0%	0%	0%
grade 2 events	2306	1936	21067	2392	15312
	2%	1%	15%	2%	11%
grade 3 events	1059	1112	3152	1252	7362
	1%	1%	2%	1%	5%
grade 4 events	1105	1055	3046	1251	7193
	1%	1%	2%	1%	5%
grade 5 events	2990	3597	10949	3835	11437
	2%	3%	7%	3%	8%
grade 6 events	1830	1907	32908	2152	28985
	1%	1%	23%	2%	22%
grade 7 events	88716	85958	54168	88372	47303
	86%	86%	38%	83%	36%

2.2 Compared Parameters

Parameter	Planned	Actual	Parameter	Planned	Actual
Instrument	ACIS	ACIS	Obspar format version number	7	7
Detector	ACIS-23567	ACIS-23567	Obspar file type	PREDICTED	ACTUAL
Grating	NONE	NONE	Obspar update status	NONE	UPDATED
Data mode	VFAINT	VFAINT	Number of optional ACIS chips dropped	0	0
Observation mode	POINTING	POINTING	On-chip summing requested	N	N
[deg] Pointing RA	236.252860	236.2243047793183	Subarray requested	NONE	NONE
[deg] Pointing Dec	36.124892	36.11036717942302	Alternating exposures requested	N	N
[deg] Pointing Roll	181.295227	181.4686680295403	[s] Primary exposure time	0.000000	3.1
[mm] SIM focus pos	-0.684267	-0.6828225247311905			
[mm] SIM defocus	0	0.001444936568705701			
[mm] SIM translation stage pos	-190.132523	-190.1400660498719			
[mm] SIM translation stage offset	0	0.00754346686406393			
[s] Observation start time (MET)	138312976.184000	138311890.11353			
Observation start date	2002-05-20T20:15:12	2002-05-20T19:58:10			
[s] Observation end time (MET)	138332476.184000	138333118.37689			
Observation end date	2002-05-21T01:40:12	2002-05-21T01:51:58			
Read mode	TIMED	TIMED			

2.3 Aspect



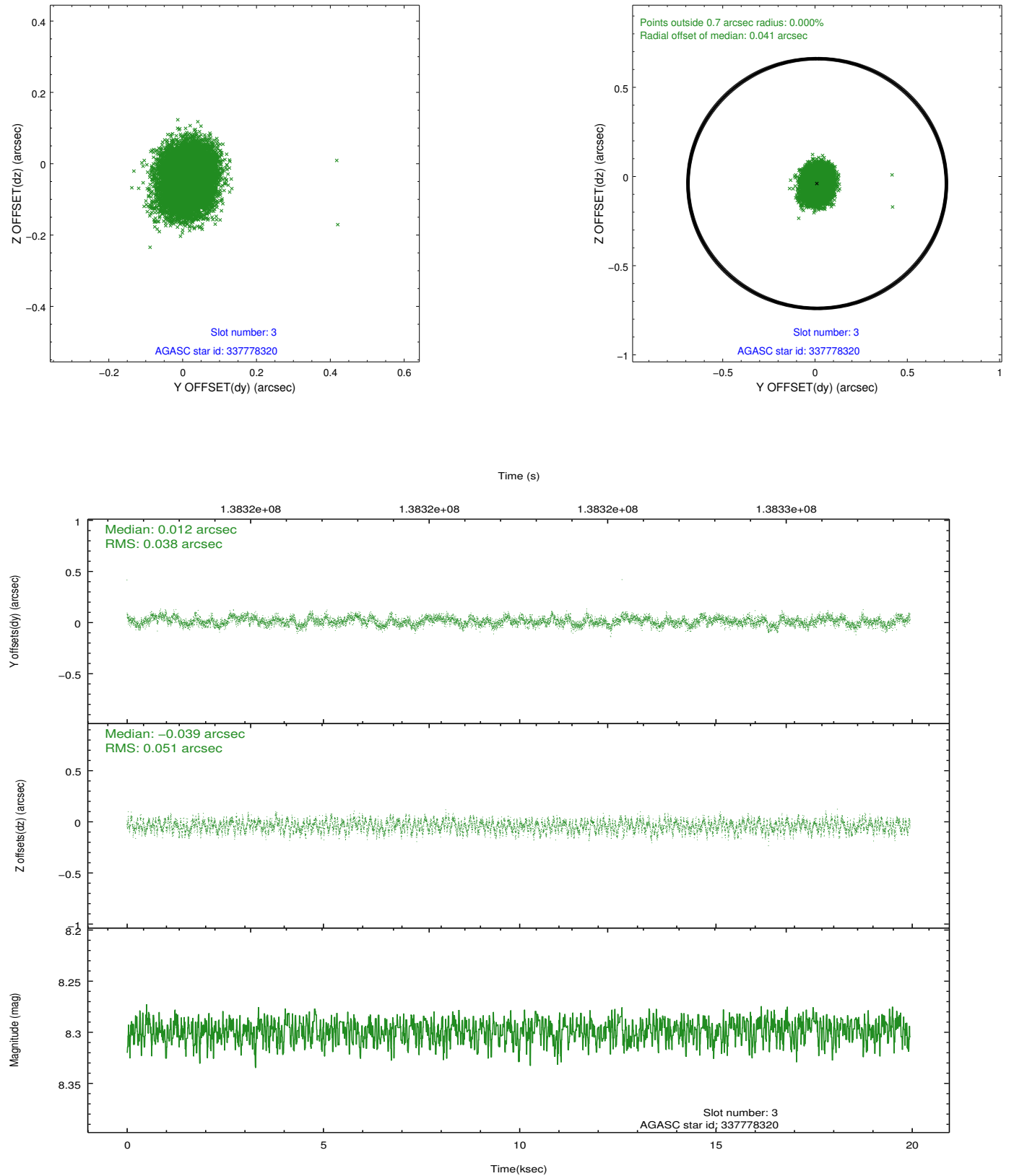


Slot Statistics

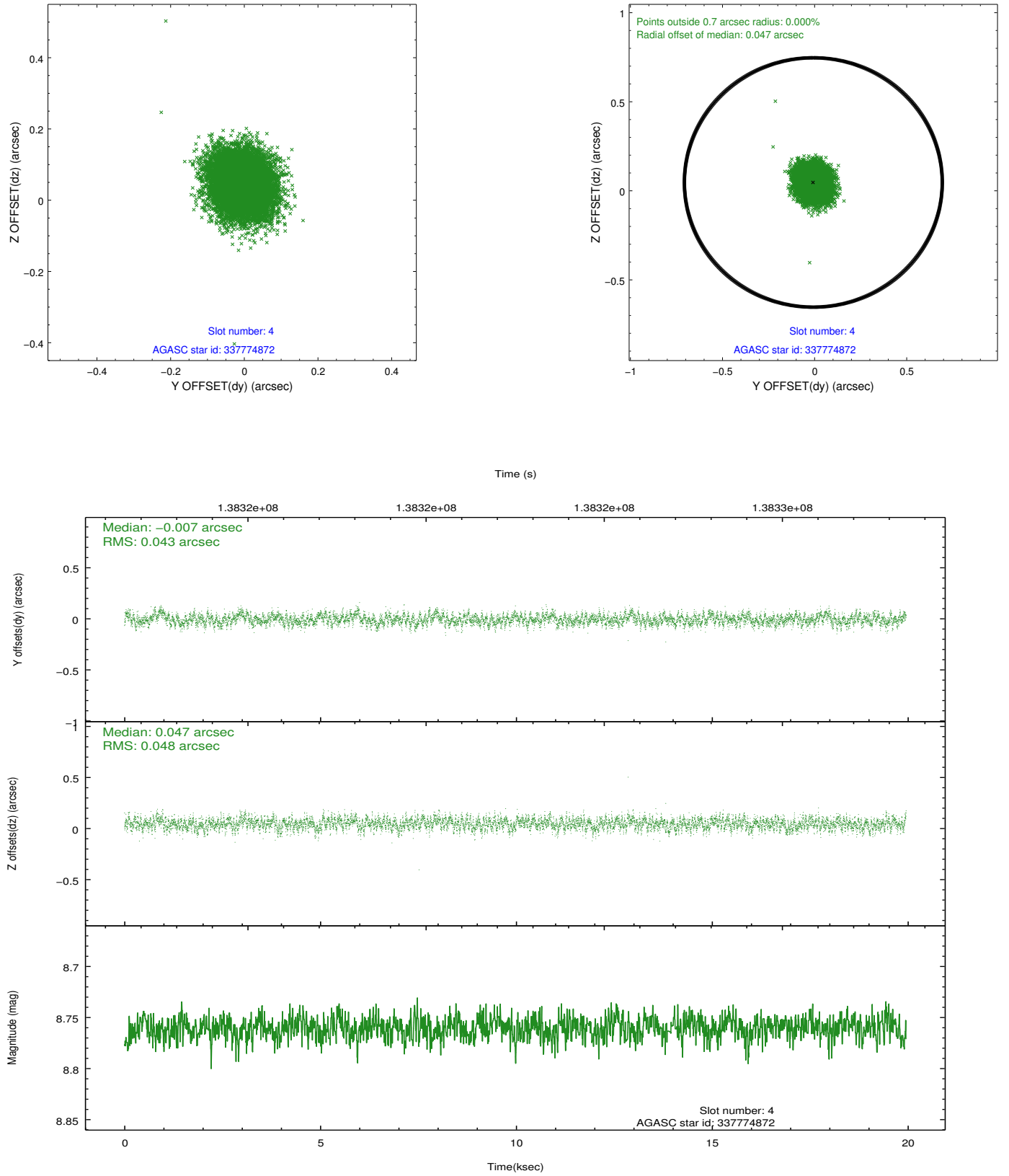
slot	status	id	mag	n_pts	med_dy	med_dz	dr1	dr2	ra	dec	mean_y	mean_z
0	FID	ACIS-S-2	7.11	4864	-0.023	0.010	0.008	0.013	0.000000	0.000000	-755.32	-1728.06
1	FID	ACIS-S-4	7.20	4866	-0.030	0.008	0.006	0.011	0.000000	0.000000	2157.85	180.25
2	FID	ACIS-S-5	7.23	4867	0.021	-0.010	0.008	0.013	0.000000	0.000000	-1807.89	174.09
3	GUIDE	337778320	8.30	9730	0.012	-0.039	0.069	0.106	236.466413	36.418381	-642.75	-1042.67
4	GUIDE	337774872	8.76	9733	-0.007	0.047	0.069	0.111	236.310718	35.643651	-130.95	1736.18
5	GUIDE	337785416	9.12	9731	-0.015	0.002	0.079	0.131	235.424632	35.998538	2420.97	390.81
6	GUIDE	337776944	9.18	9733	-0.052	0.021	0.107	0.161	236.710979	36.784491	-1374.59	-2346.73
7	GUIDE	337774448	9.38	9726	0.063	-0.031	0.097	0.157	236.876186	36.357553	-1826.29	-802.31

2.4 Star Slots

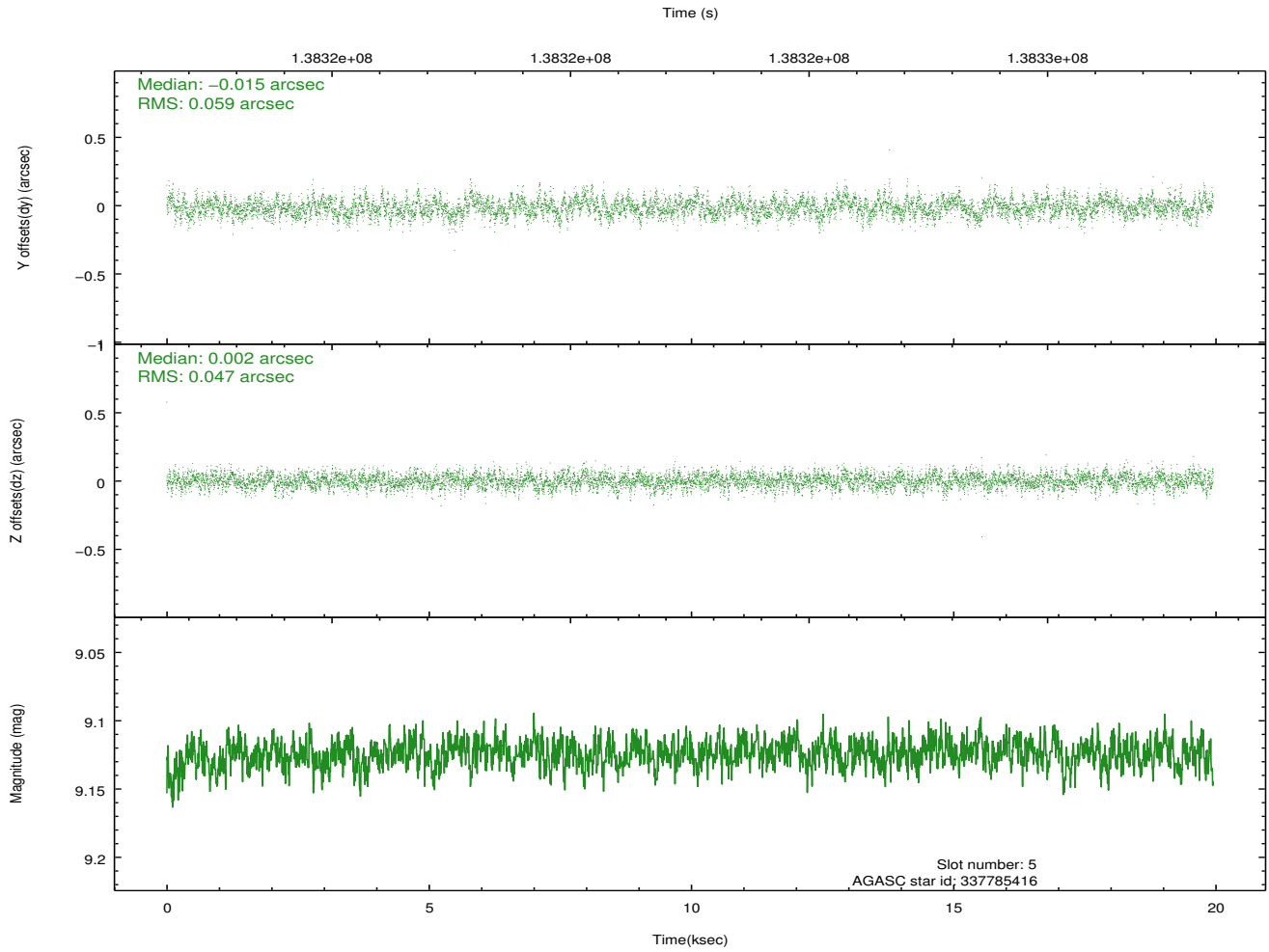
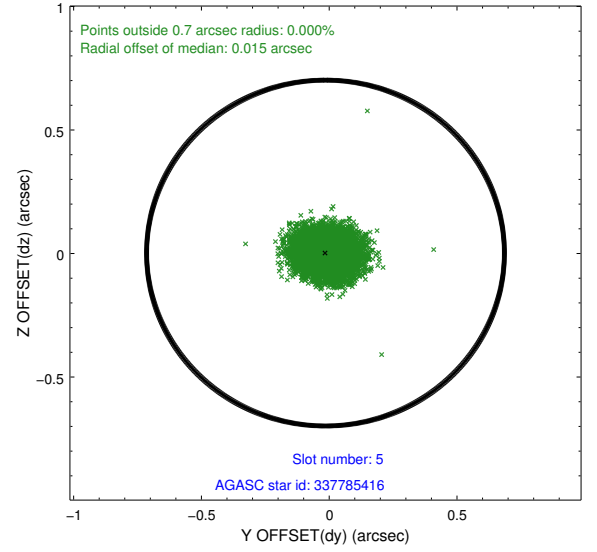
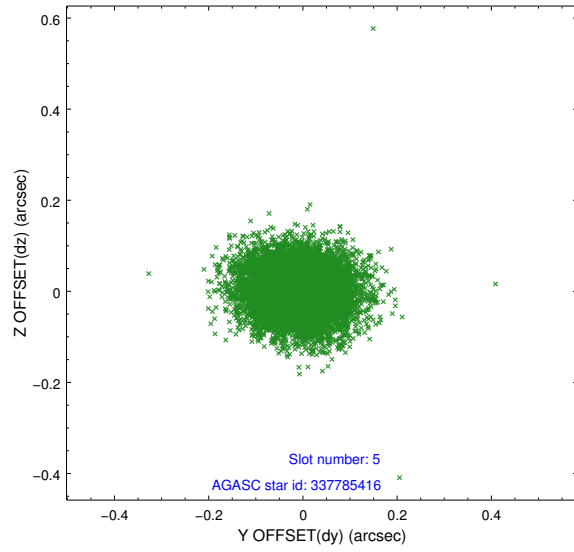
2.4.1 Slot 3



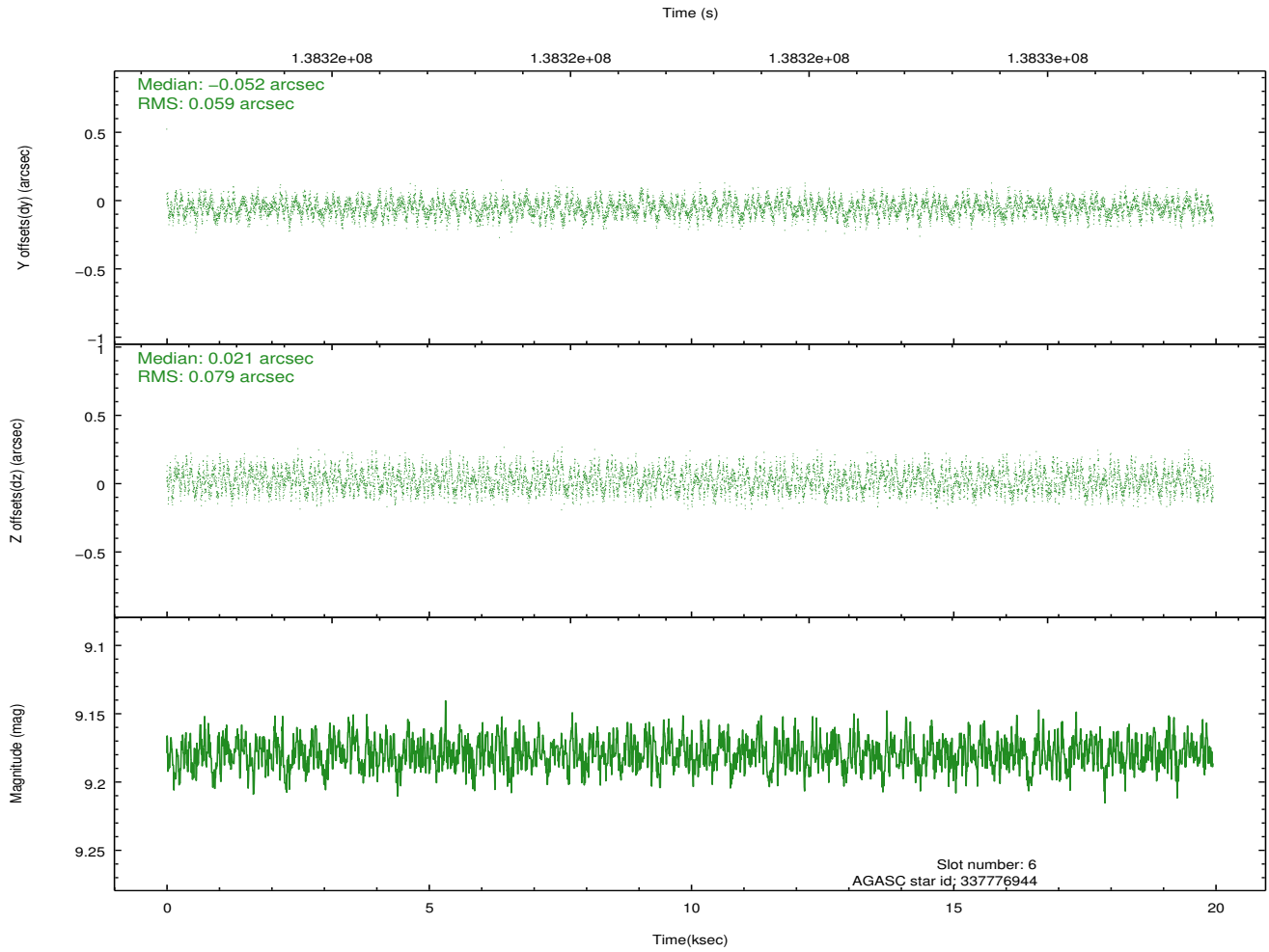
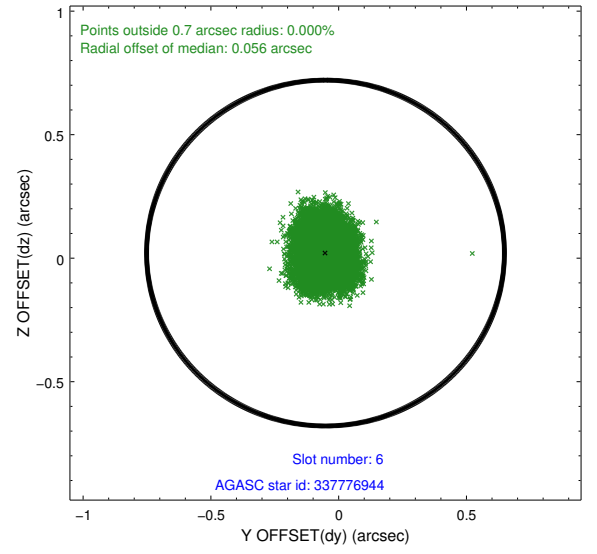
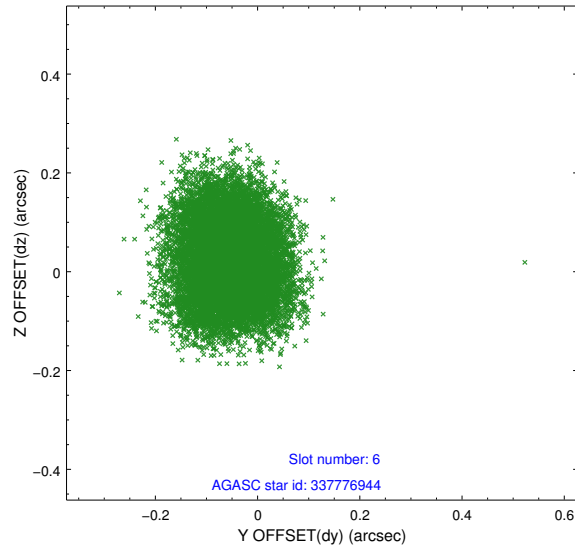
2.4.2 Slot 4



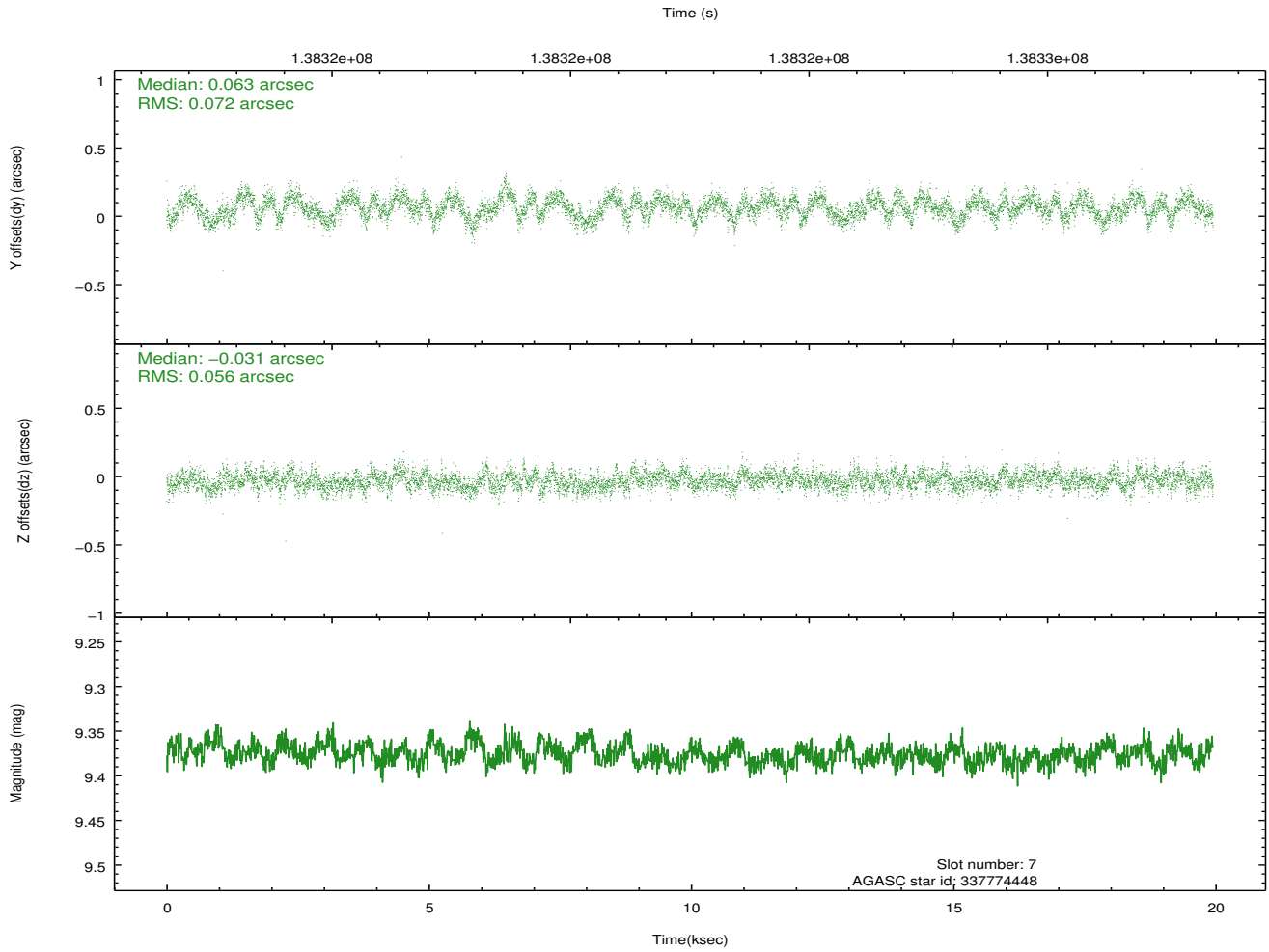
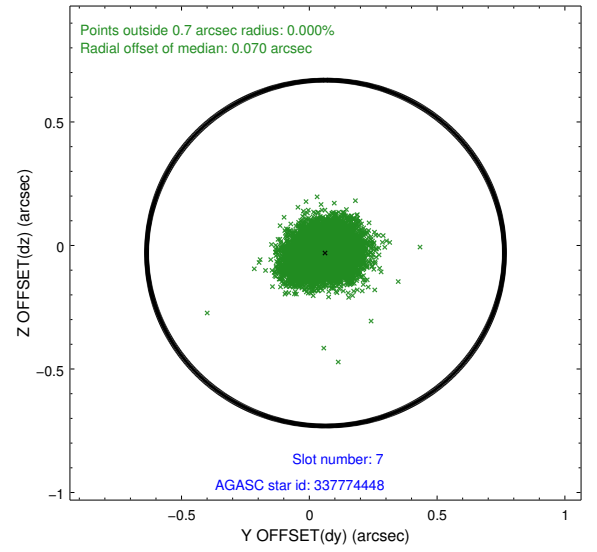
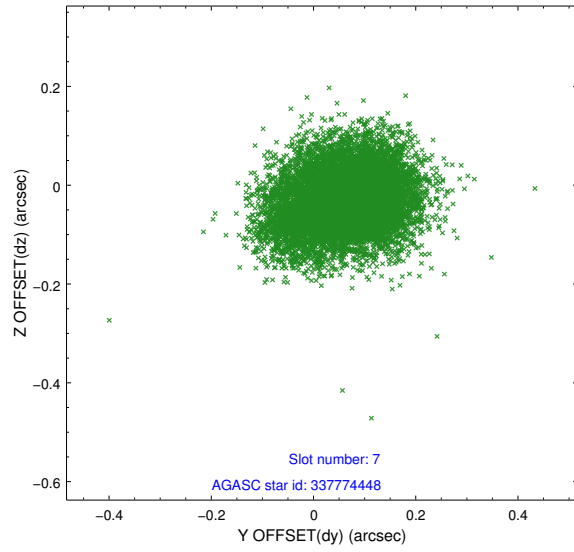
2.4.3 Slot 5



2.4.4 Slot 6

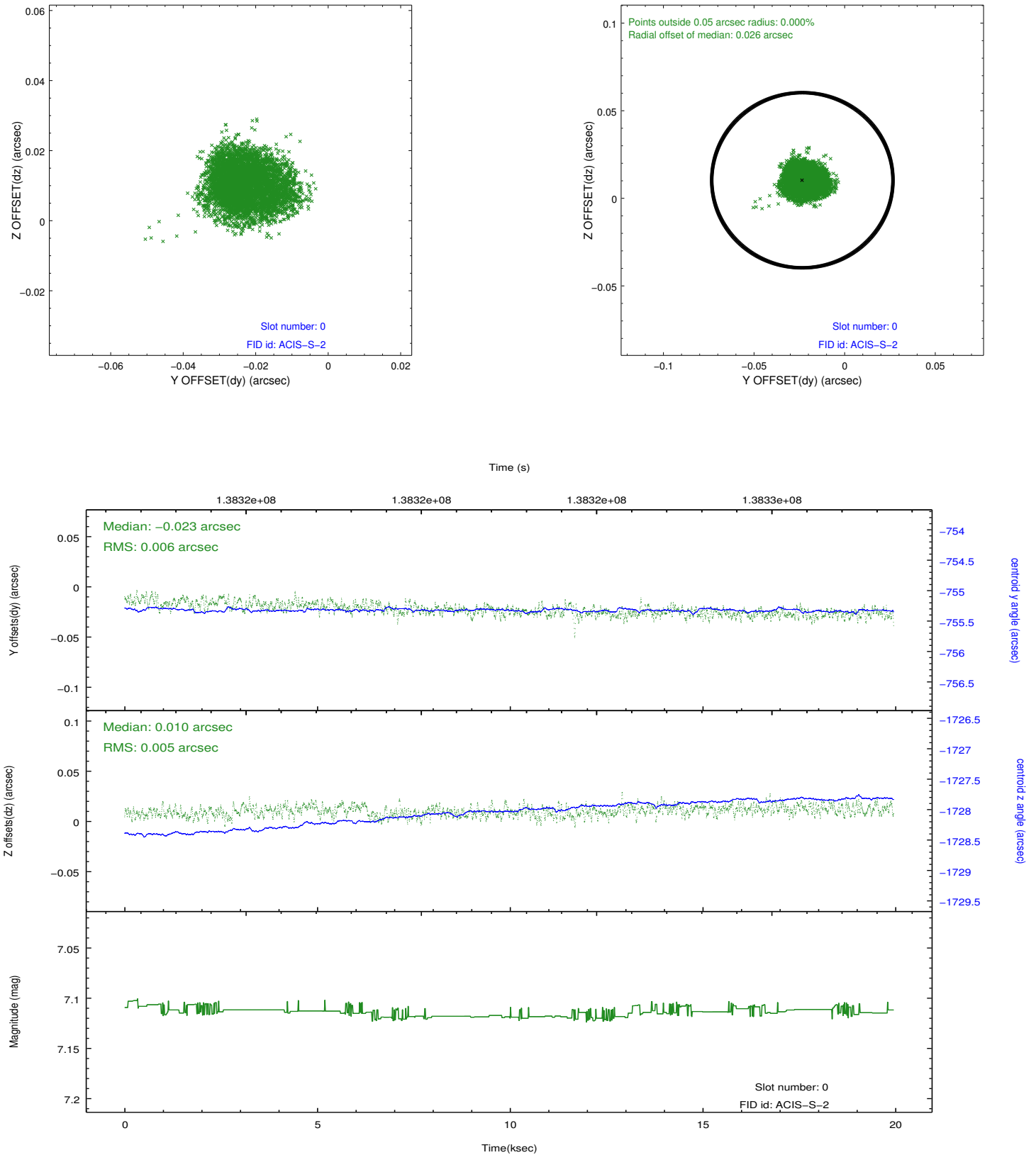


2.4.5 Slot 7

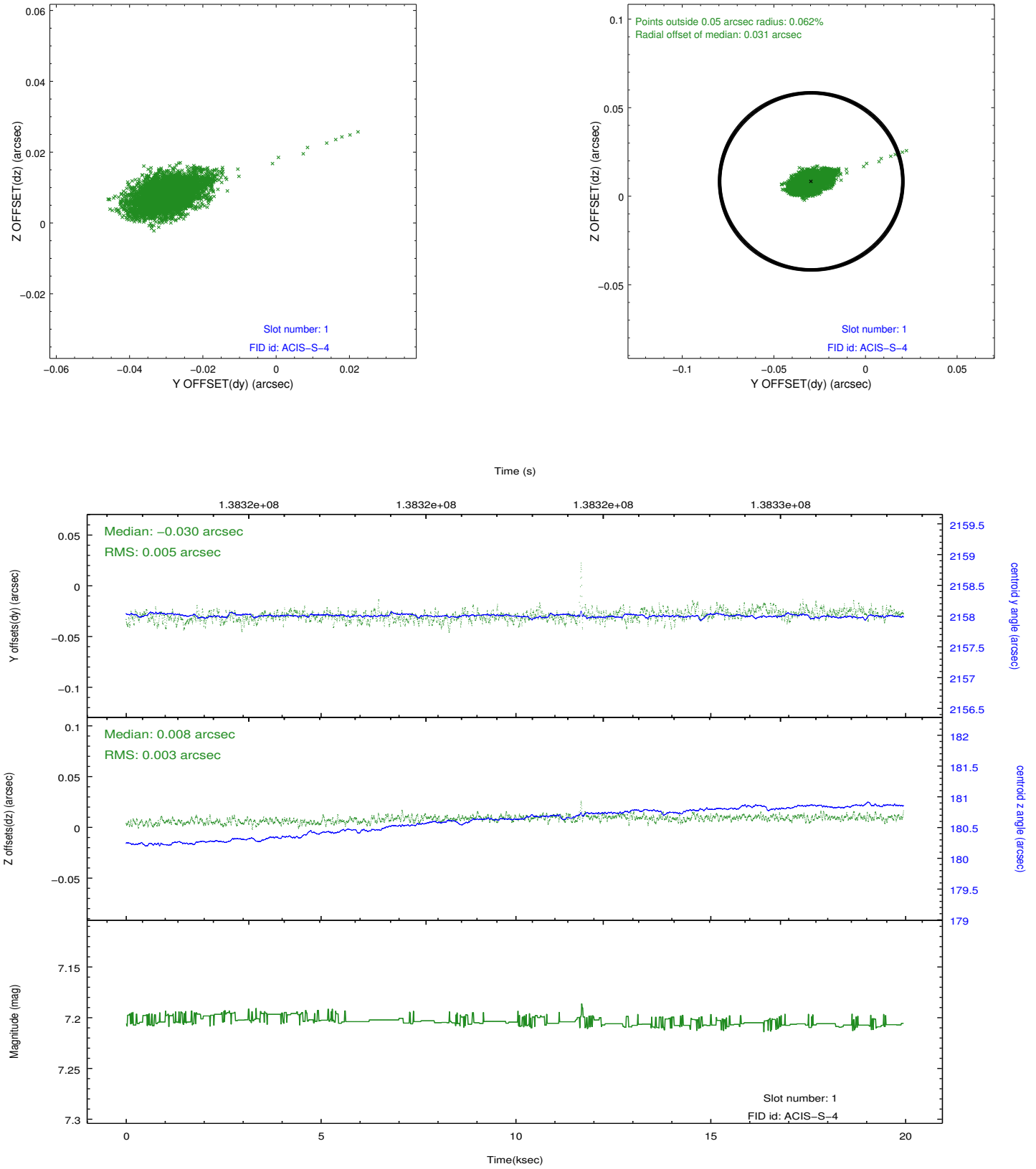


2.5 FID Slots

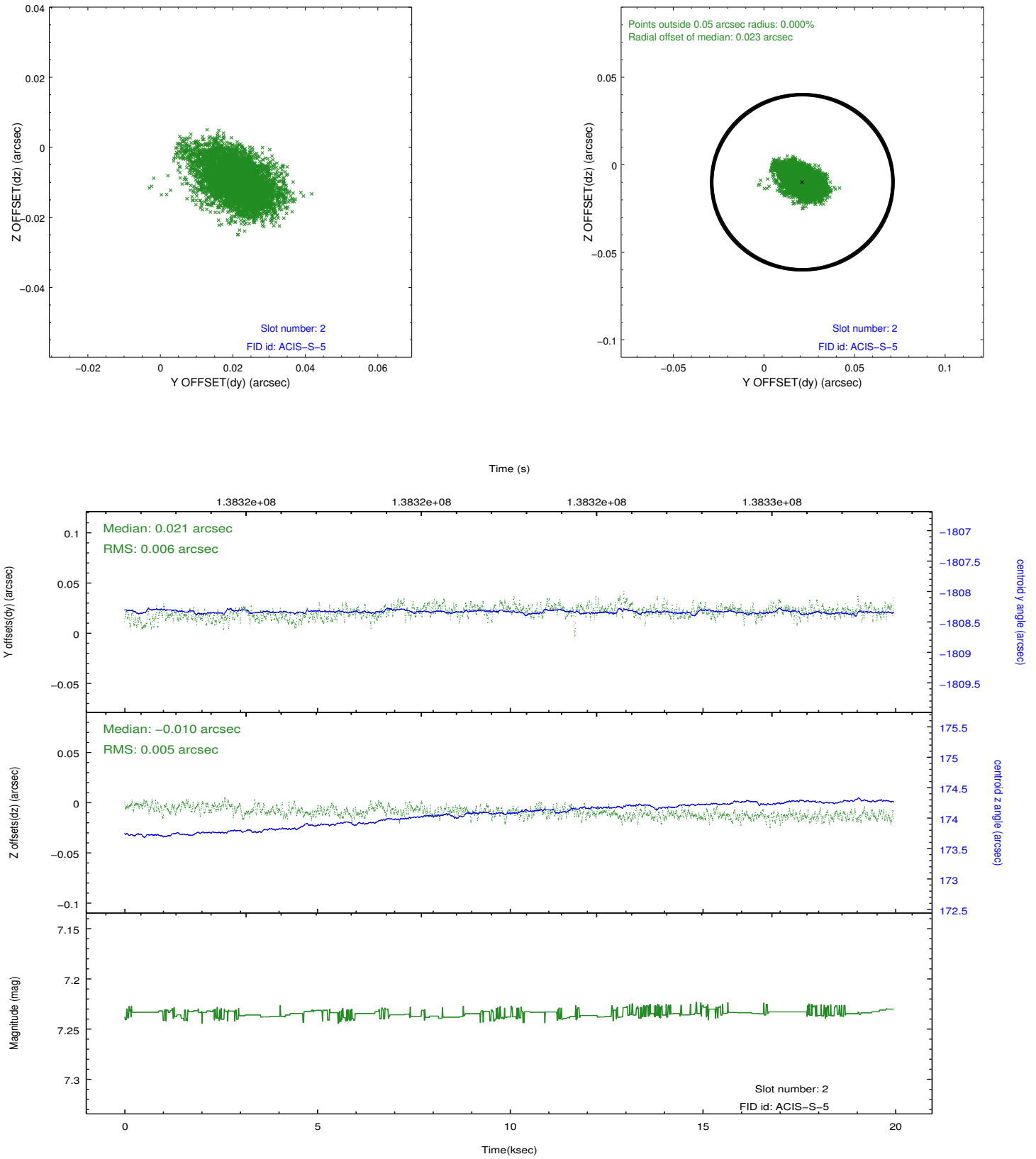
2.5.1 Slot 0



2.5.2 Slot 1



2.5.3 Slot 2



A Summary

A.1 Status

V&V Scientist	Beth Sundheim
V&V Date (YYYY-MM-DD)	2012.10.17
V&V Edition	1
V&V Disposition and Status	OK
V&V Charge Time	19.61

A.2 Comments