

V&V Reference Report

L2 ASCDS Version : 7.6.9

Observation 3238 - L2 Version 001
Chandra X-Ray Center

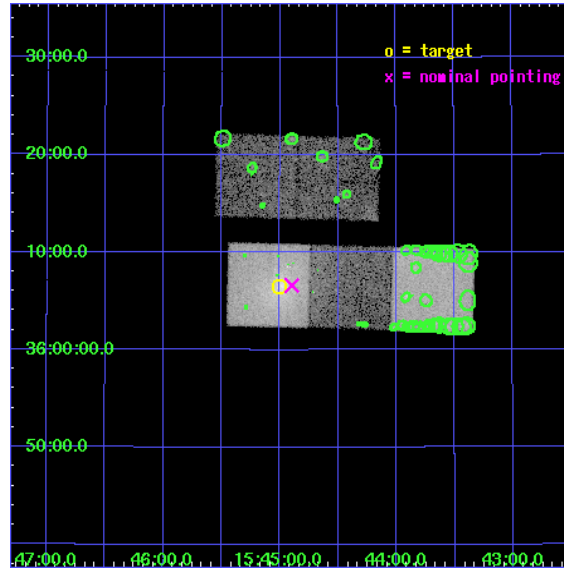
L2 Processing Date : Sep 16 2006

Contents

1	Front	2
2	OBI	3
2.1	OBI	3
2.1.1	Images	3
2.1.2	Bias	3
2.1.3	Parameters	4
2.1.4	Events	4
2.2	Compared Parameters	5
2.3	Aspect	6
2.4	Star Slots	9
2.4.1	Slot 3	9
2.4.2	Slot 4	10
2.4.3	Slot 5	11
2.4.4	Slot 6	12
2.4.5	Slot 7	13
2.5	FID Slots	14
2.5.1	Slot 0	14
2.5.2	Slot 1	15
2.5.3	Slot 2	16
3	Point Sources	17
A	Summary	18
A.1	Status	18
A.2	Comments	18

1 Front

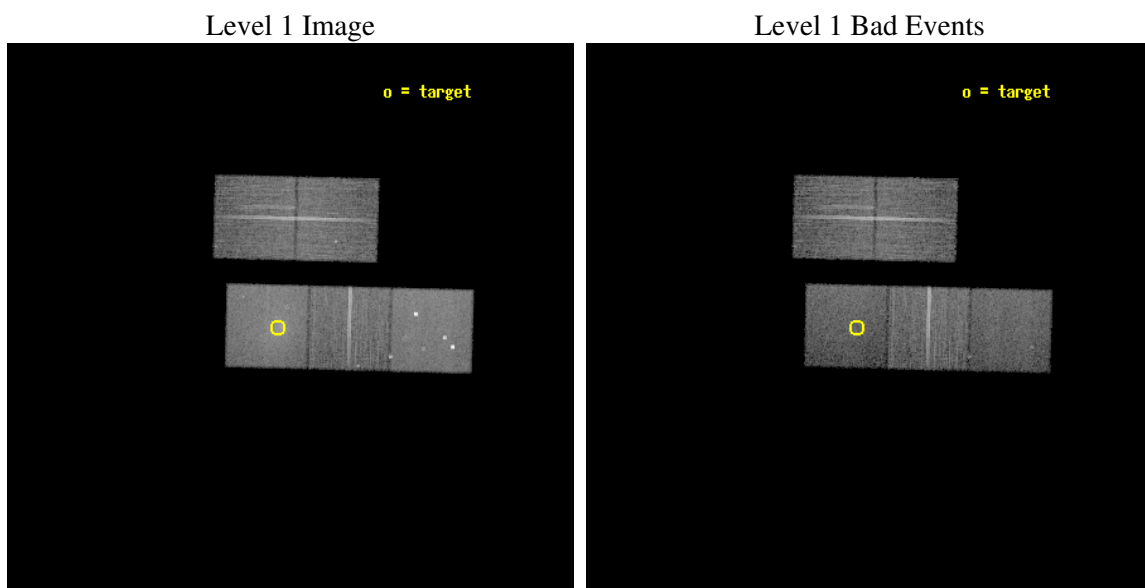
seq_num	800238
obs_id	3238
title	THE CORE STRUCTURE OF THE LOWEST REDSHIFT STRONG LENSING CLUSTER
observer	Dr Haruyoshi Katayama
object	ABELL 2124
dtcycle	0
cycle	P
ra_targ	236.25
dec_targ	36.109167
ra_nom	236.22430478452
dec_nom	36.110367177505
roll_nom	181.46866802772
revision	2
ontime	19607.4999623
livetime	19351.313540461
ontime2	19601.218041778
ontime3	19607.4999623
ontime5	19607.4999623
ontime6	19601.218011945
ontime7	19607.4999623
l2events	152202



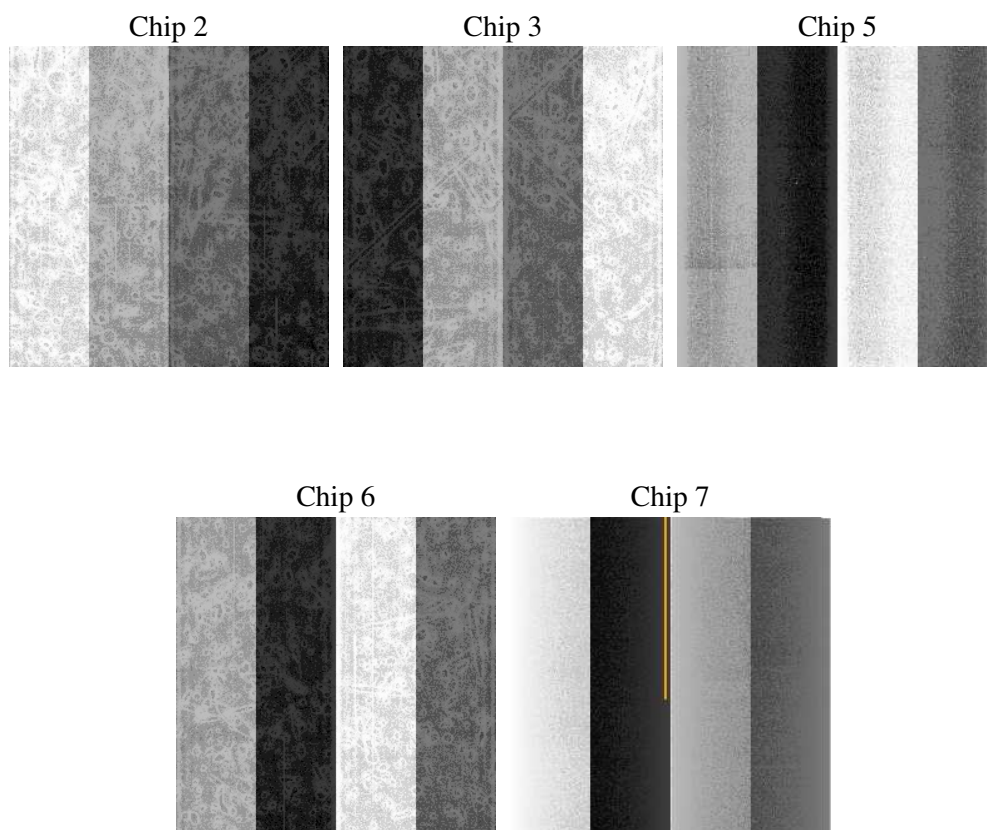
2 OBI

2.1 OBI

2.1.1 Images



2.1.2 Bias



2.1.3 Parameters

obi_num	0
ascdsver	7.6.9
caldsver	3.2.3
date	2006-09-16T18:04:33
revision	2

sched_exp_time	19500.000000
ontime	19612.4218705
ontime2	19606.139920056
ontime3	19612.421840578
ontime5	19612.421840578
ontime6	19606.139890224
ontime7	19612.4218705
l1events	576213

2.1.4 Events

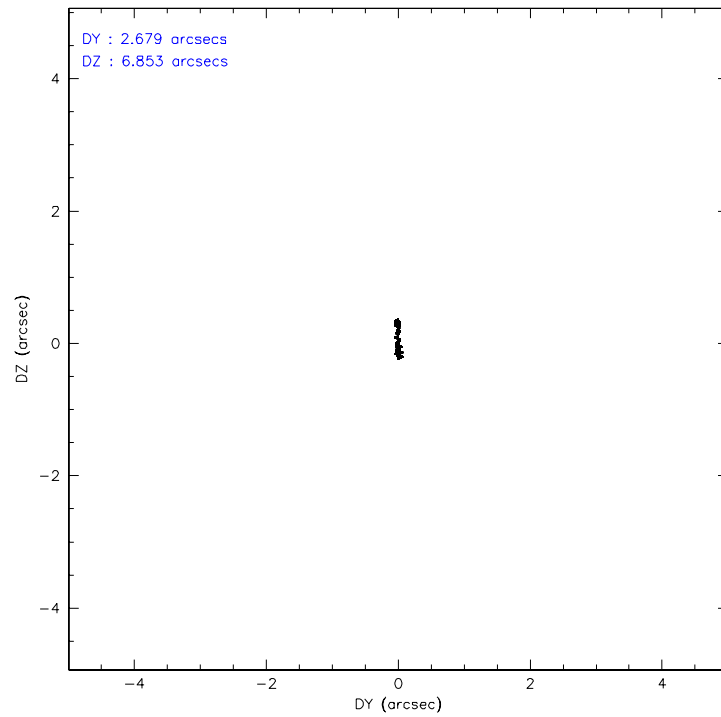
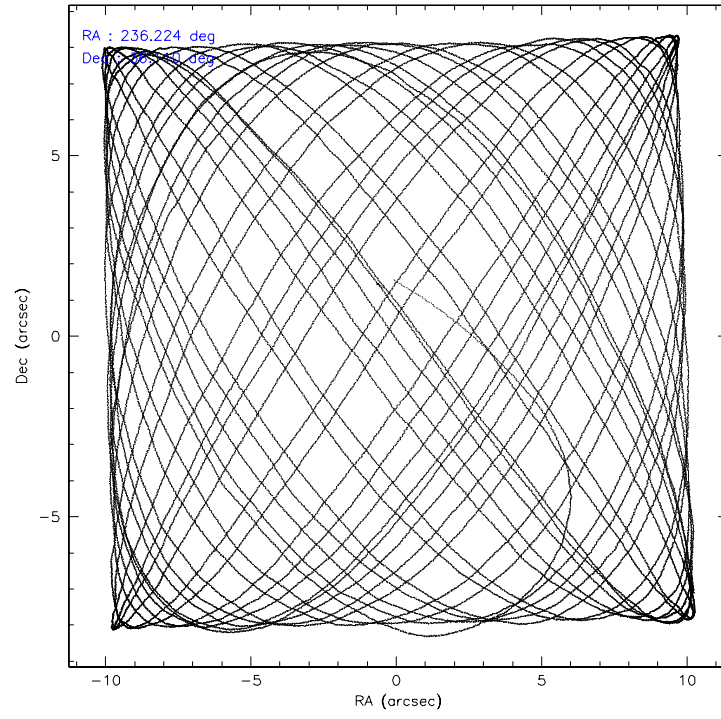
	ccd 2	ccd 3	ccd 5	ccd 6	ccd 7
level 1 events	102705	99157	139772	105409	129170
rejected events	91749	89592	67750	92274	62375
rejected %	89%	90%	48%	87%	48%

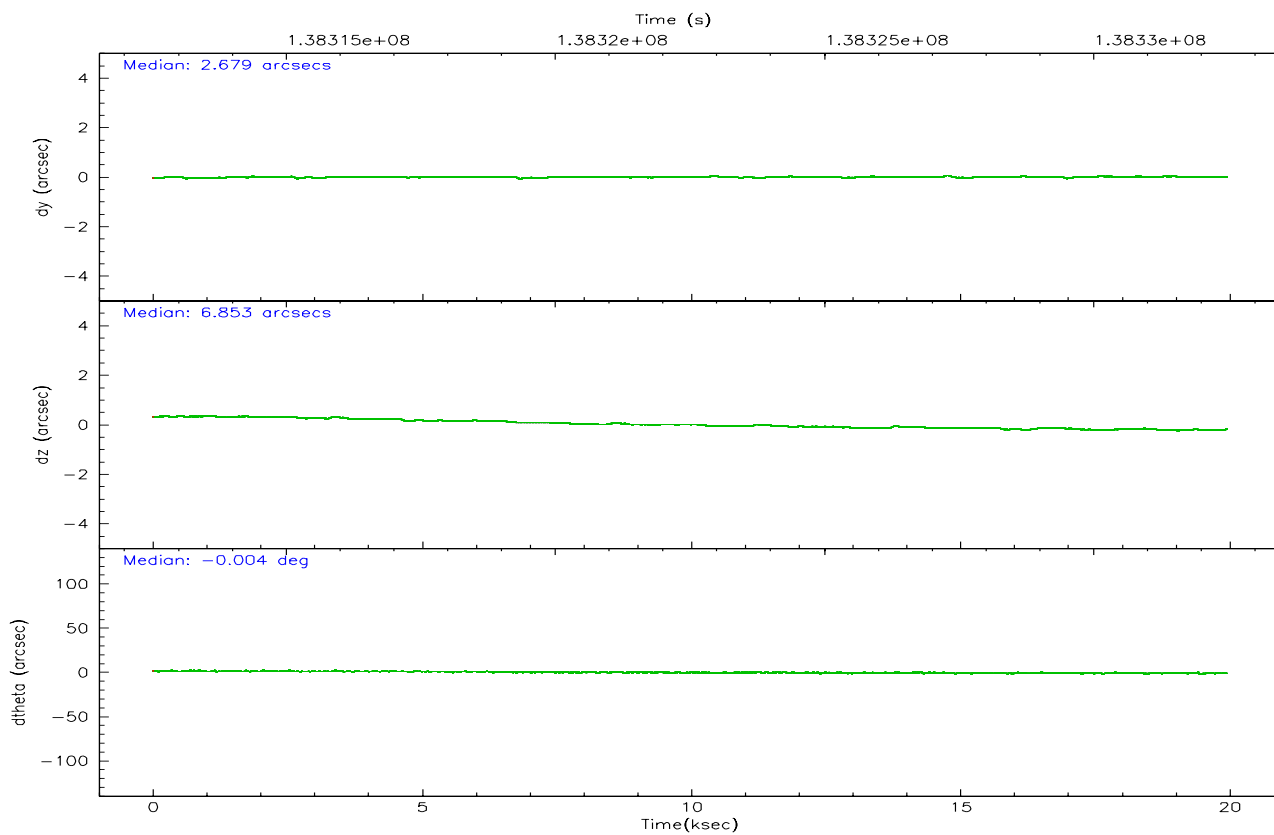
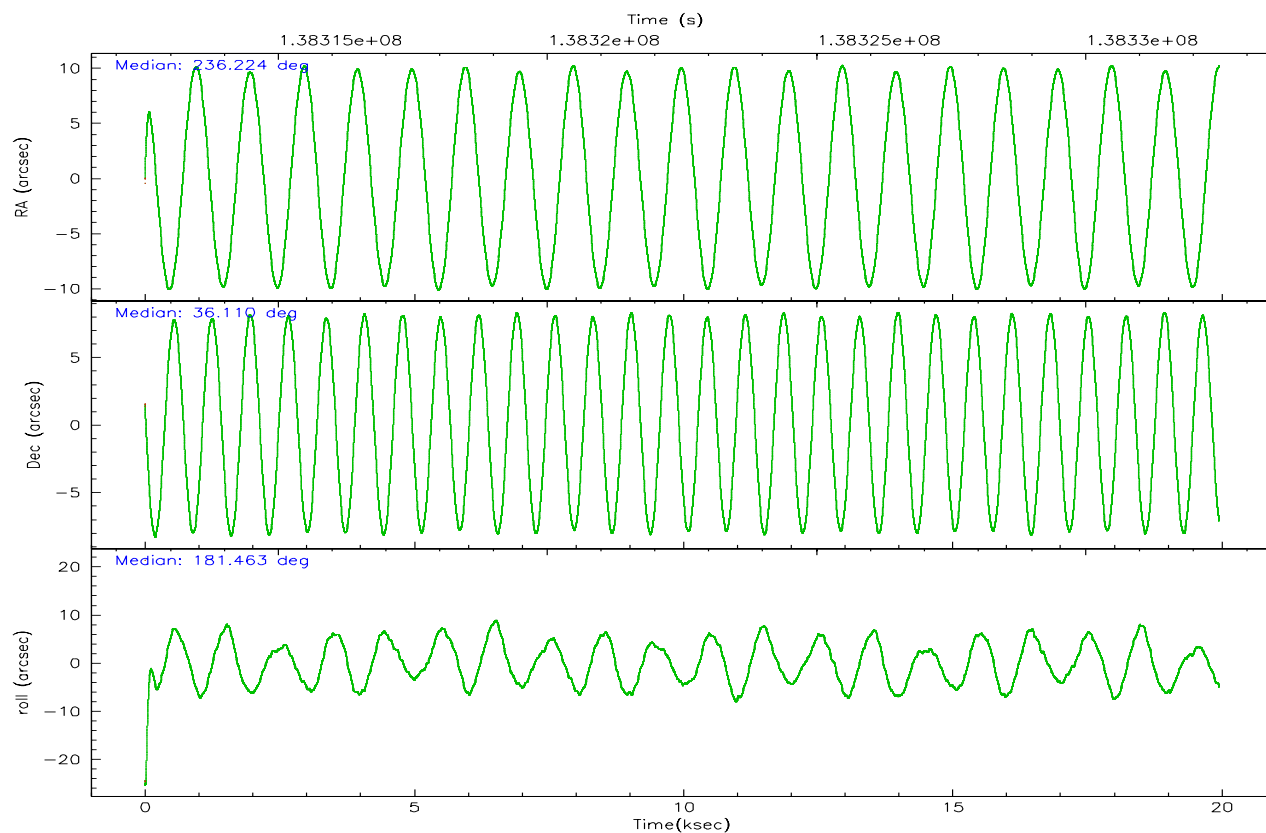
	ccd 2	ccd 3	ccd 5	ccd 6	ccd 7
grade 0 events	4658	3556	12187	6096	9289
	4%	3%	8%	5%	7%
grade 1 events	41	36	222	59	56
	0%	0%	0%	0%	0%
grade 2 events	2306	1936	21952	2392	17031
	2%	1%	15%	2%	13%
grade 3 events	1059	1112	1787	1252	5153
	1%	1%	1%	1%	3%
grade 4 events	1105	1055	1673	1251	5035
	1%	1%	1%	1%	3%
grade 5 events	2990	3597	7137	3835	8315
	2%	3%	5%	3%	6%
grade 6 events	1830	1907	34441	2152	30298
	1%	1%	24%	2%	23%
grade 7 events	88716	85958	60373	88372	53993
	86%	86%	43%	83%	41%

2.2 Compared Parameters

Parameter	Planned	Actual	Parameter	Planned	Actual
Instrument	ACIS	ACIS	Obspar format version number	6	6
Detector	ACIS-23567	ACIS-23567	Obspar file type	PREDICTED	ACTUAL
Grating	NONE	NONE	Obspar update status	NONE	UPDATED
Data mode	VFAINT	VFAINT	Number of optional ACIS chips dropped	0	0
Observation mode	POINTING	POINTING	On-chip summing requested	N	N
Pointing RA	236.252860	236.22430478452	Subarray requested	NONE	NONE
Pointing Dec	36.124892	36.11036717750476	Alternating exposures requested	N	N
Pointing Roll	181.295227	181.4686680277181	Primary exposure time	0.000000	3.1
SIM focus pos (mm)	-0.684267	-0.6828225247311905			
SIM defocus (mm)	0	0.001444936568705701			
SIM translation stage pos (mm)	-190.132523	-190.1400660498719			
SIM translation stage offset (mm)	0	0.00754346686406393			
Observation start time	138312976.184000	138311890.11353			
Observation start date	2002-05-20T20:15:12	2002-05-20T19:58:10			
Observation end time	138332476.184000	138333118.37689			
Observation end date	2002-05-21T01:40:12	2002-05-21T01:51:58			
Read mode	TIMED	TIMED			

2.3 Aspect



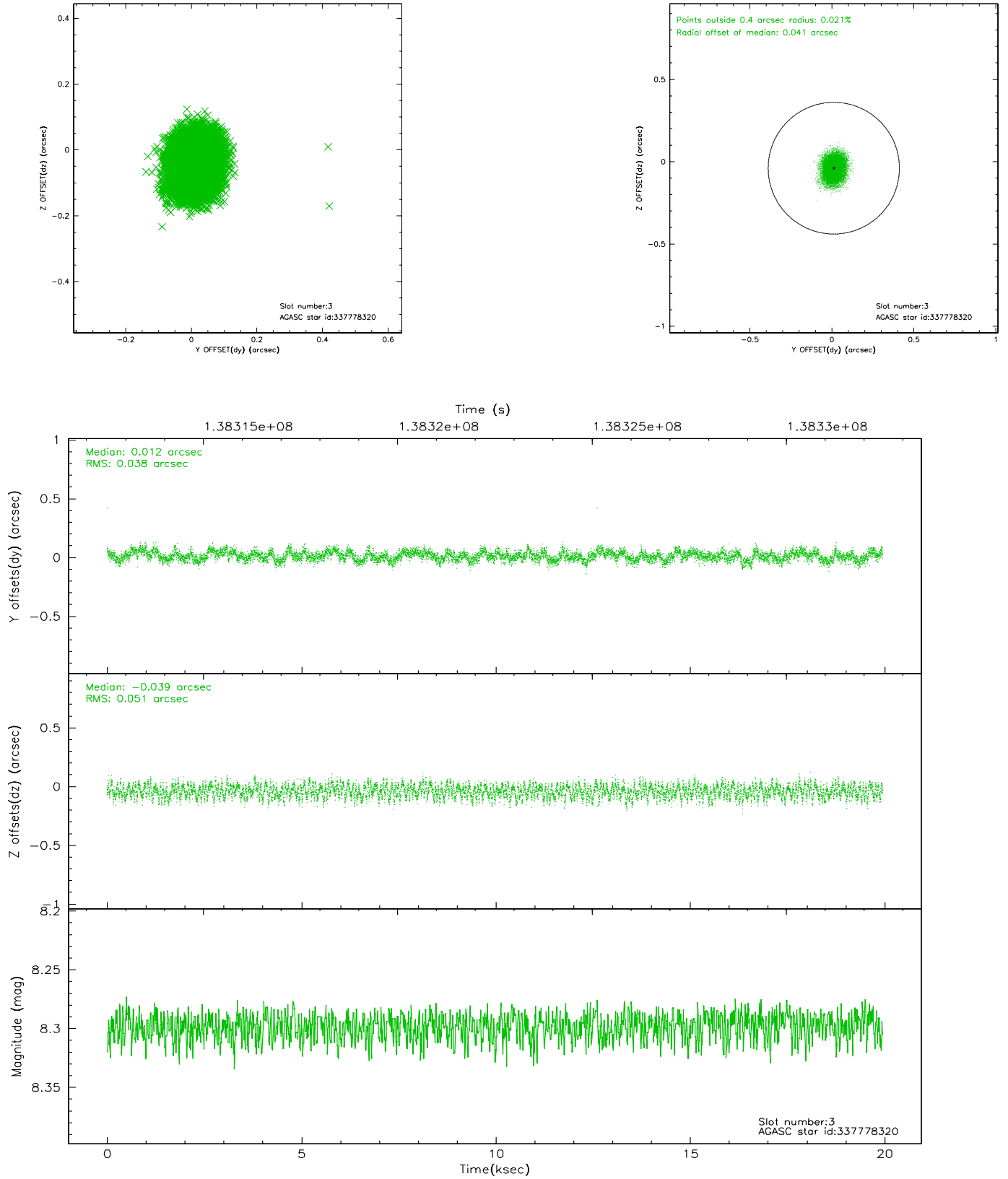


Slot Statistics

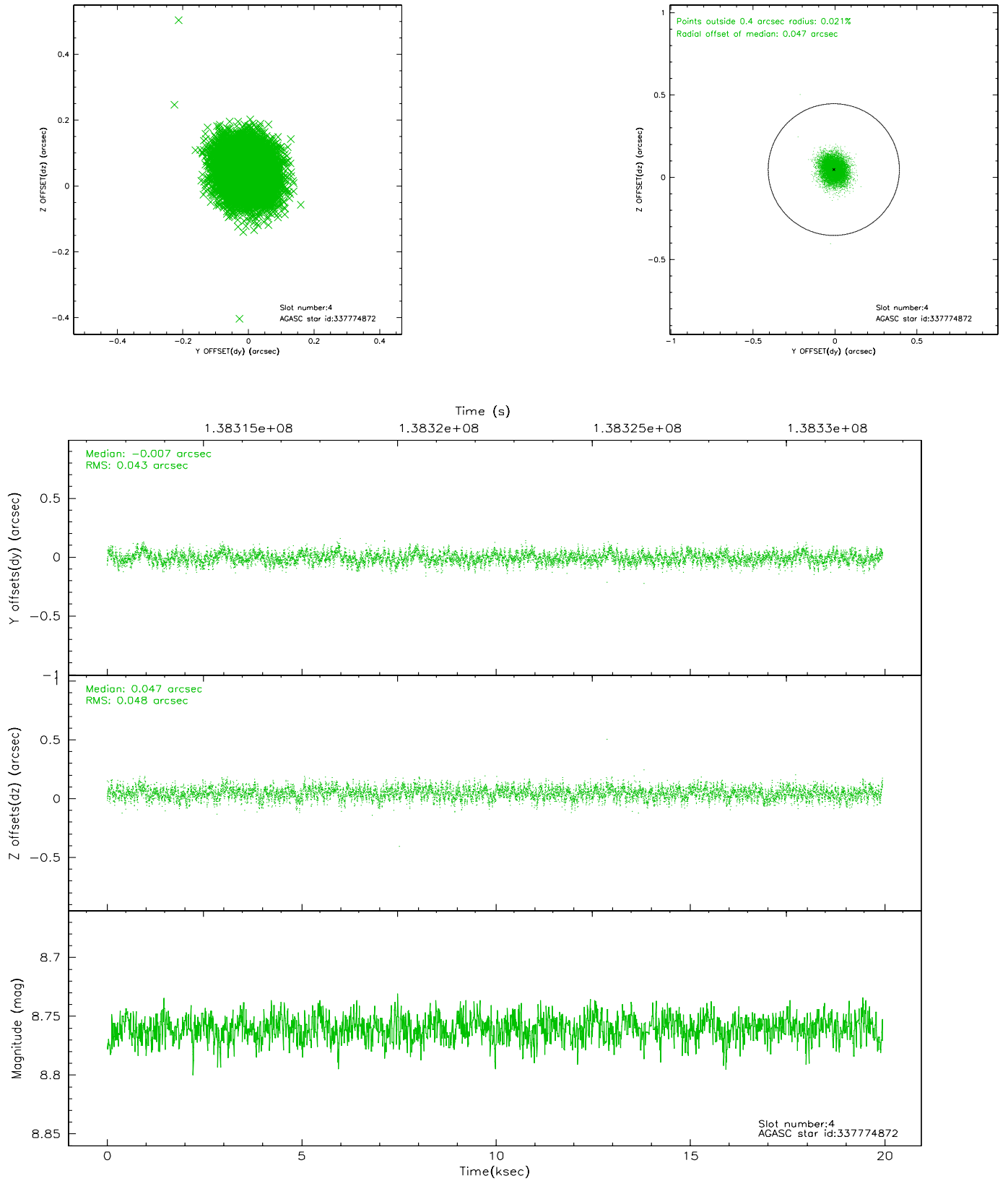
slot	status	id	mag	n_pts	med_dy	med_dz	dr1	dr2	ra	dec	mean_y	mean_z
0	FID	ACIS-S-2	7.11	4864	-0.012	0.034	0.009	0.014	0.000000	0.000000	-755.31	-1728.02
1	FID	ACIS-S-4	7.20	4866	-0.071	-0.003	0.006	0.011	0.000000	0.000000	2157.81	180.25
2	FID	ACIS-S-5	7.23	4867	0.052	-0.021	0.007	0.012	0.000000	0.000000	-1807.86	174.10
3	GUIDE	337778320	8.30	9730	0.012	-0.039	0.069	0.106	236.466413	36.418381	-642.75	-1042.67
4	GUIDE	337774872	8.76	9733	-0.007	0.047	0.069	0.111	236.310718	35.643651	-130.95	1736.18
5	GUIDE	337785416	9.12	9731	-0.015	0.002	0.079	0.131	235.424632	35.998538	2420.97	390.81
6	GUIDE	337776944	9.18	9733	-0.052	0.021	0.107	0.161	236.710979	36.784491	-1374.59	-2346.73
7	GUIDE	337774448	9.38	9726	0.063	-0.031	0.097	0.157	236.876186	36.357553	-1826.29	-802.31

2.4 Star Slots

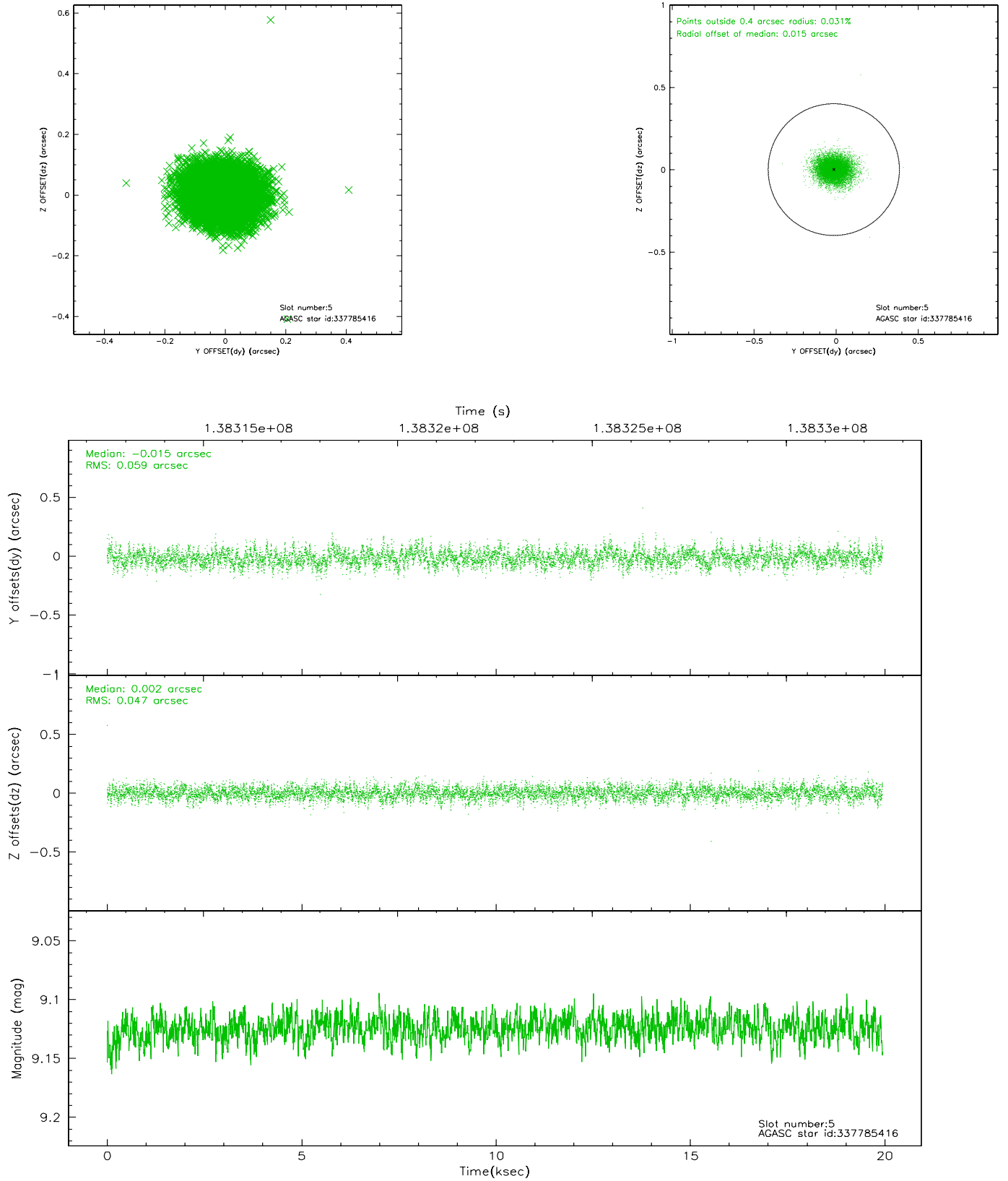
2.4.1 Slot 3



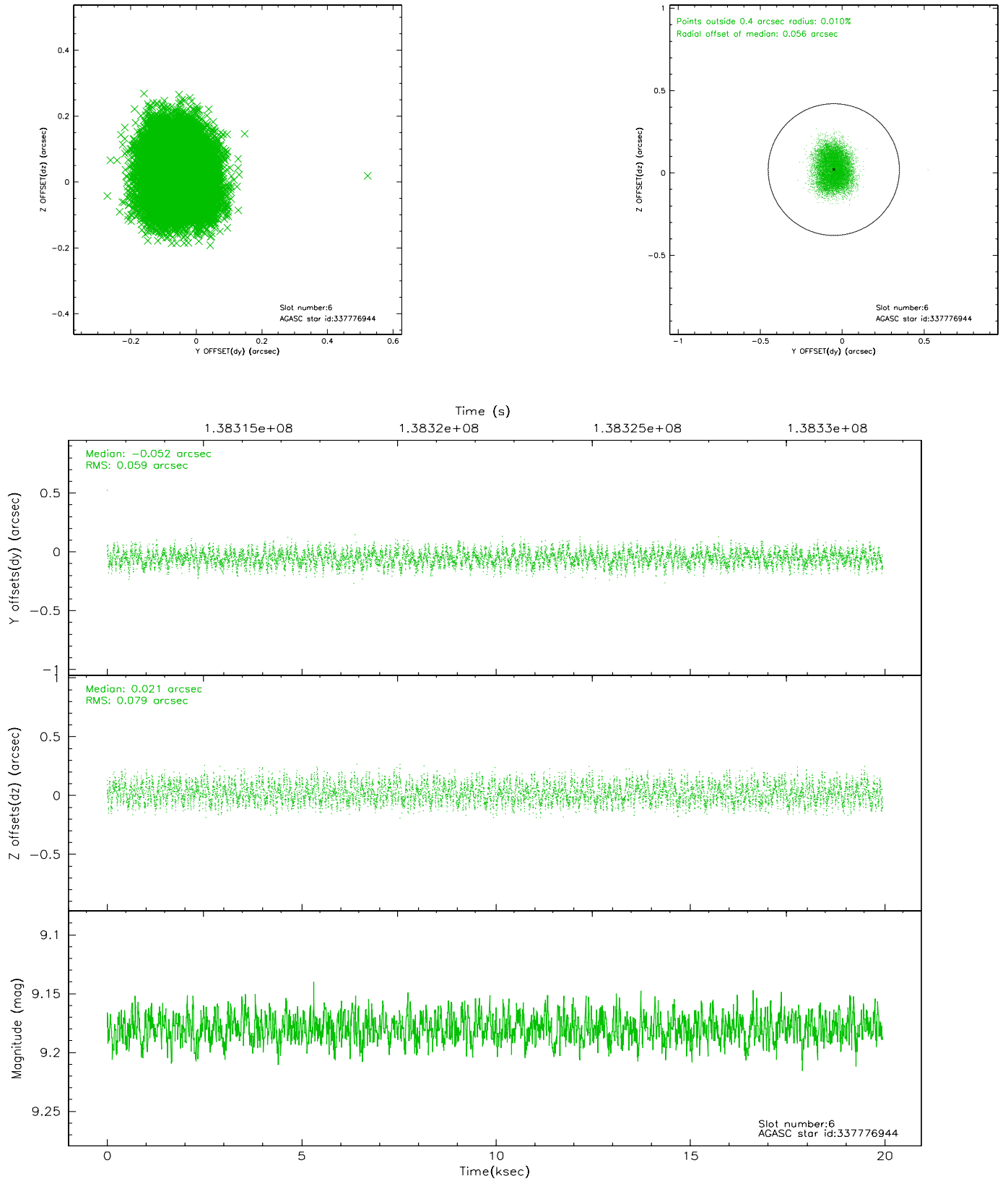
2.4.2 Slot 4



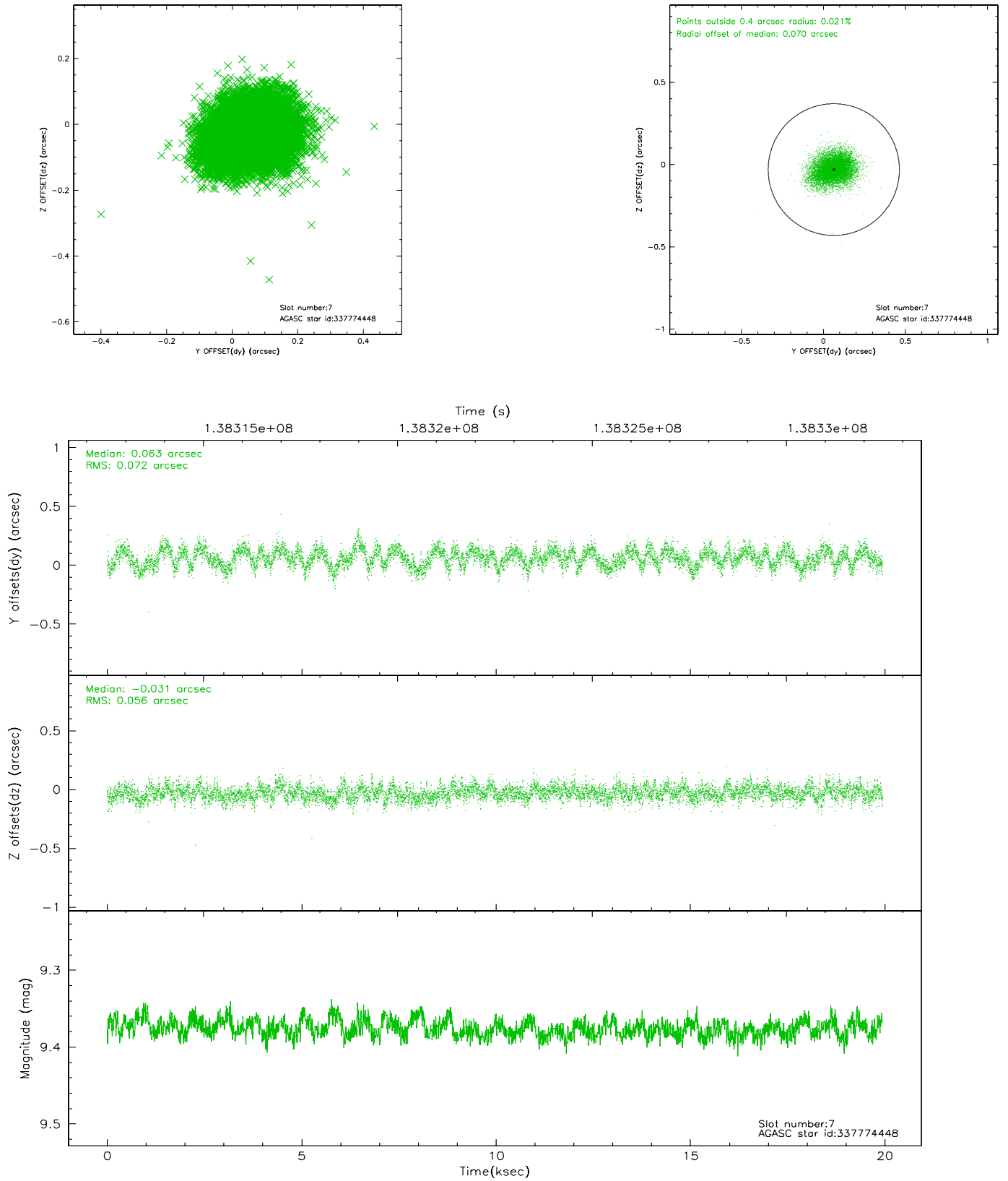
2.4.3 Slot 5



2.4.4 Slot 6

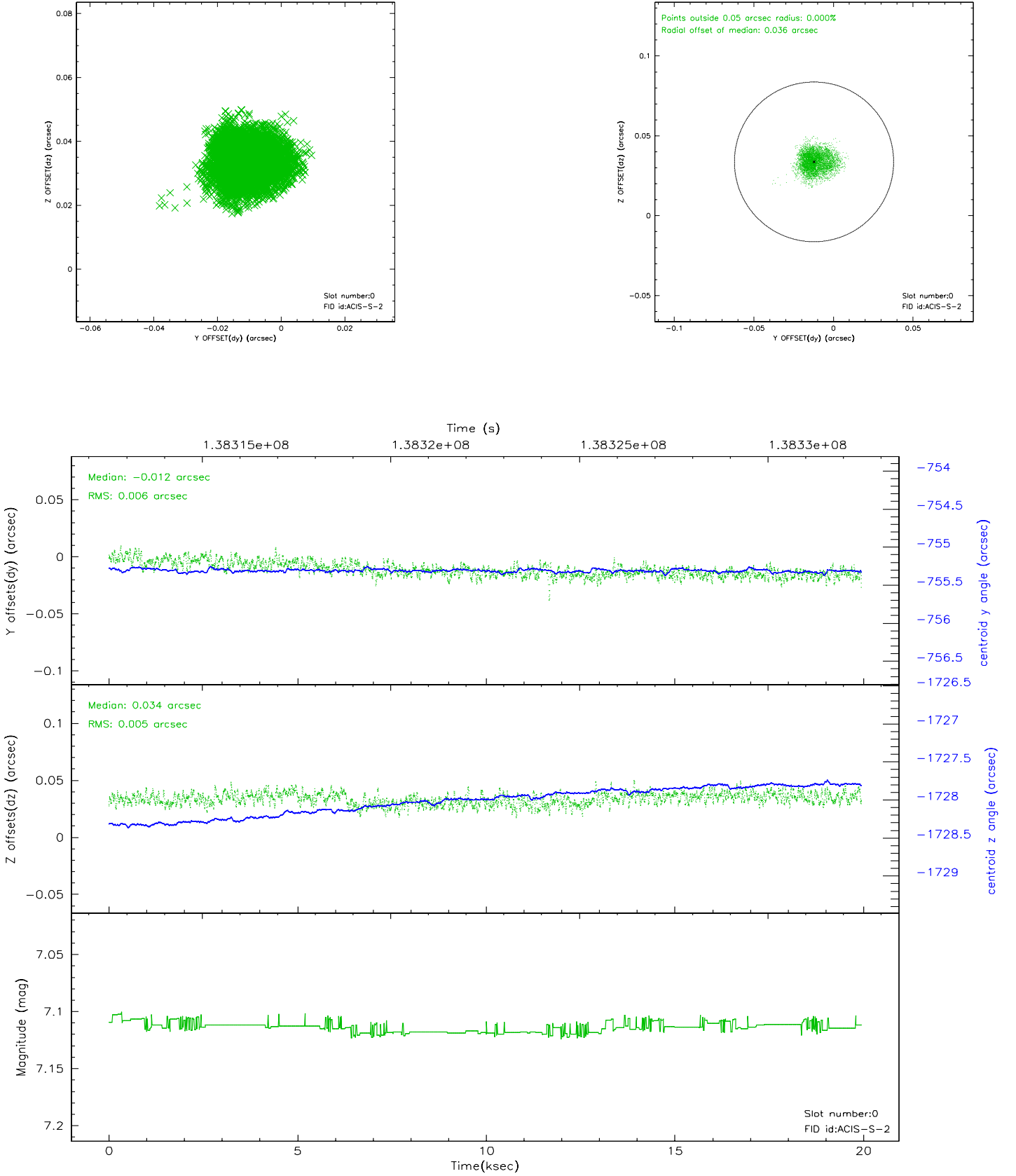


2.4.5 Slot 7

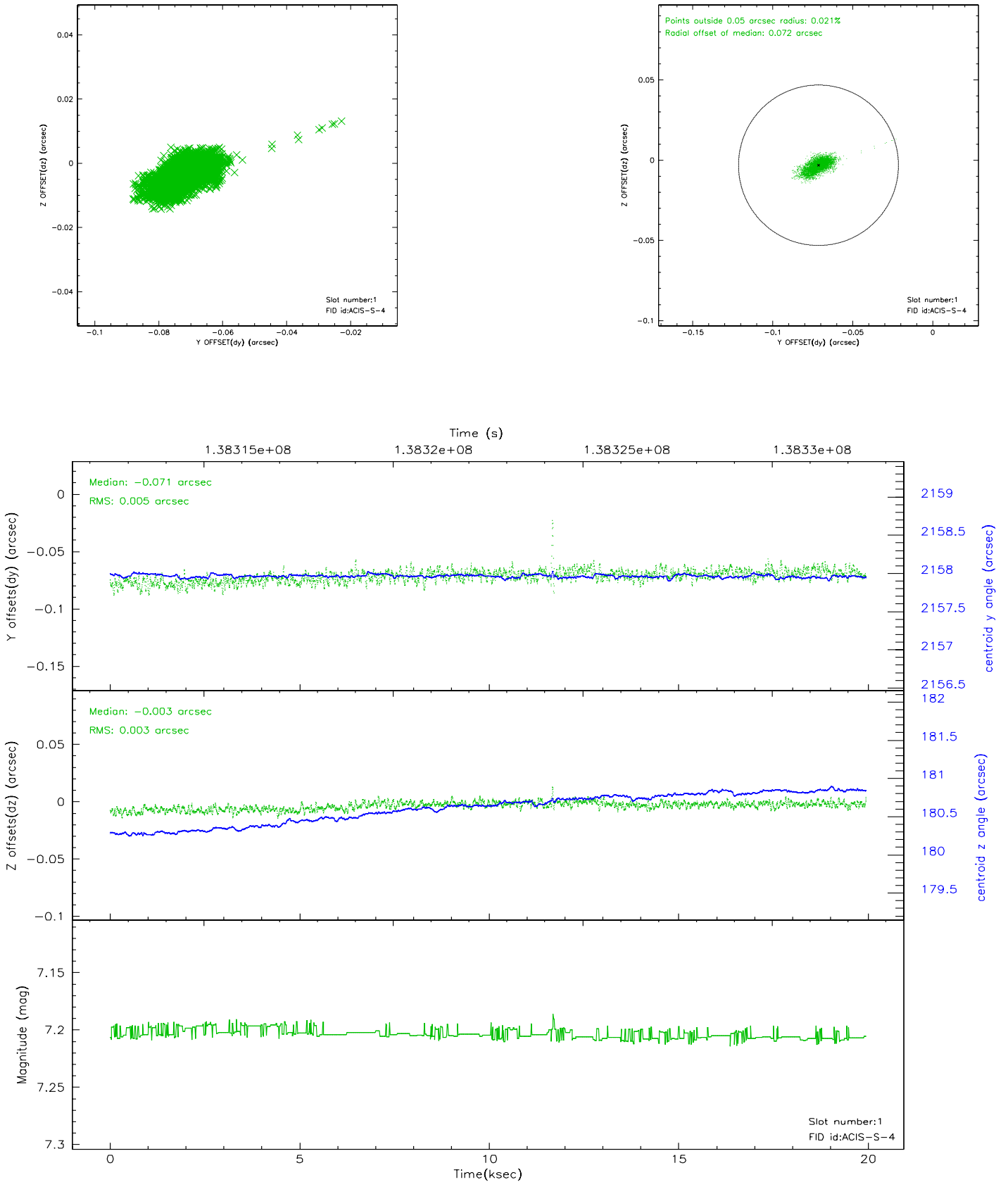


2.5 FID Slots

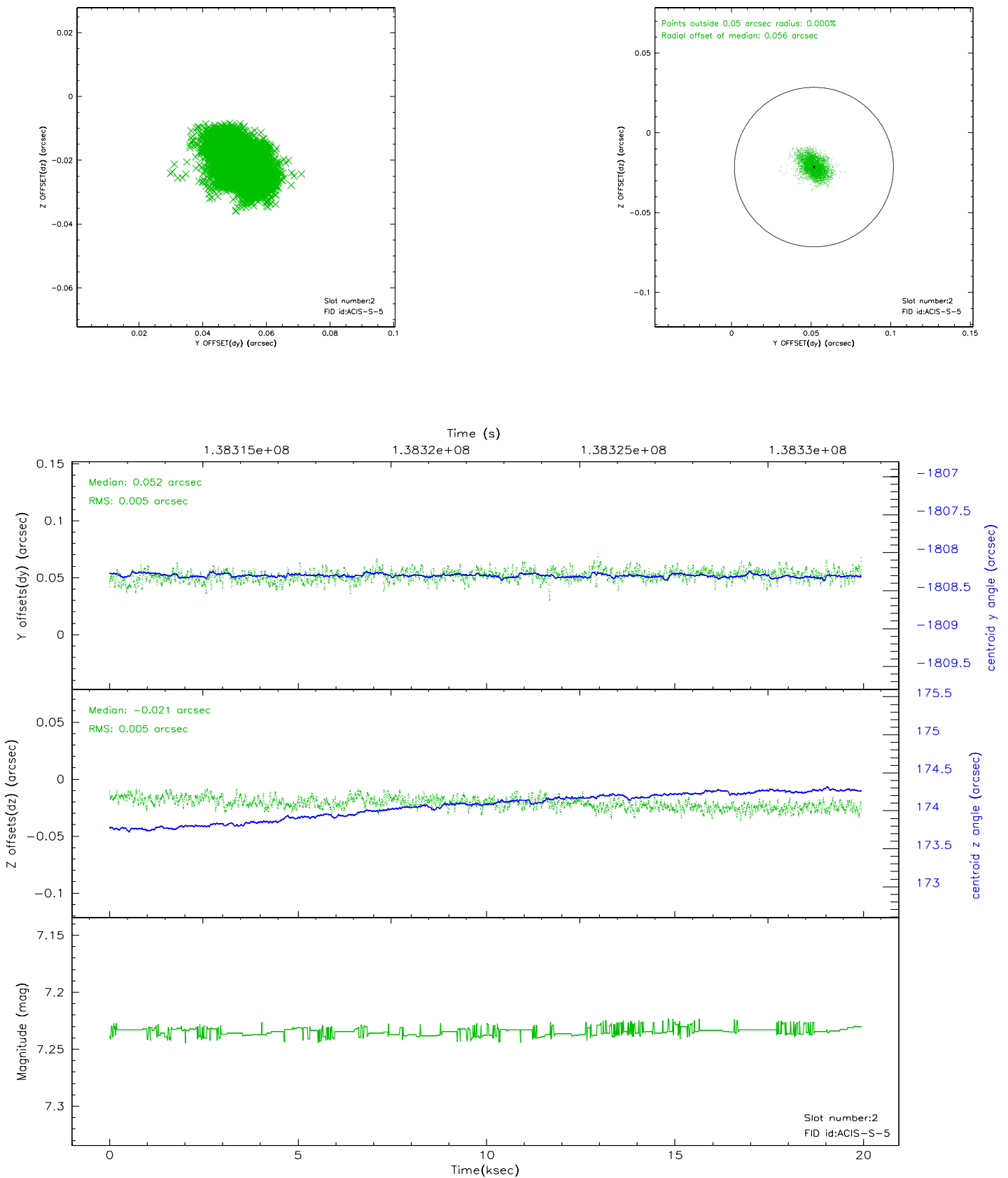
2.5.1 Slot 0



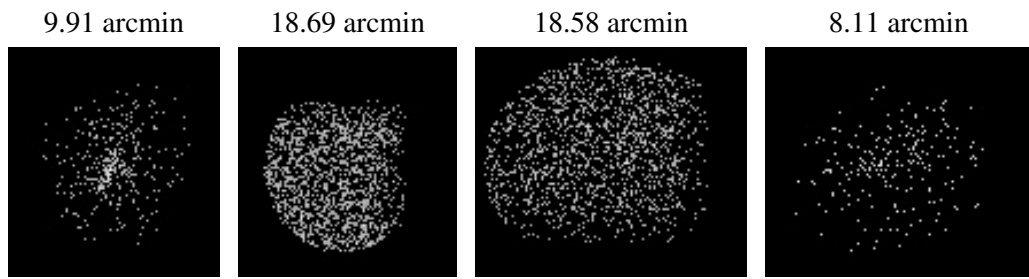
2.5.2 Slot 1



2.5.3 Slot 2



3 Point Sources



A Summary

A.1 Status

V&V Scientist	Jen Lauer
V&V Date (YYYY-MM-DD)	2006.09.18
V&V Edition	1
V&V Disposition and Status	OK
V&V Charge Time	19.61

A.2 Comments