

V&V Reference Report

L2 ASCDS Version : 7.6.8.1

Observation 3158 - L2 Version 001
Chandra X-Ray Center

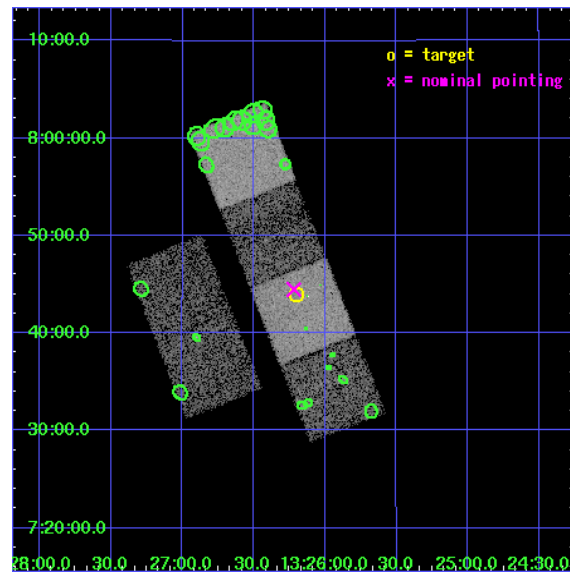
L2 Processing Date : Aug 26 2006

Contents

1	Front	2
2	OBI	3
2.1	OBI	3
2.1.1	Images	3
2.1.2	Bias	3
2.1.3	Parameters	4
2.1.4	Events	4
2.2	Compared Parameters	5
2.3	Aspect	6
2.4	Star Slots	9
2.4.1	Slot 3	9
2.4.2	Slot 4	10
2.4.3	Slot 5	11
2.4.4	Slot 6	12
2.4.5	Slot 7	13
2.5	FID Slots	14
2.5.1	Slot 0	14
2.5.2	Slot 1	15
2.5.3	Slot 2	16
3	Point Sources	17
A	Summary	18
A.1	Status	18
A.2	Comments	18

1 Front

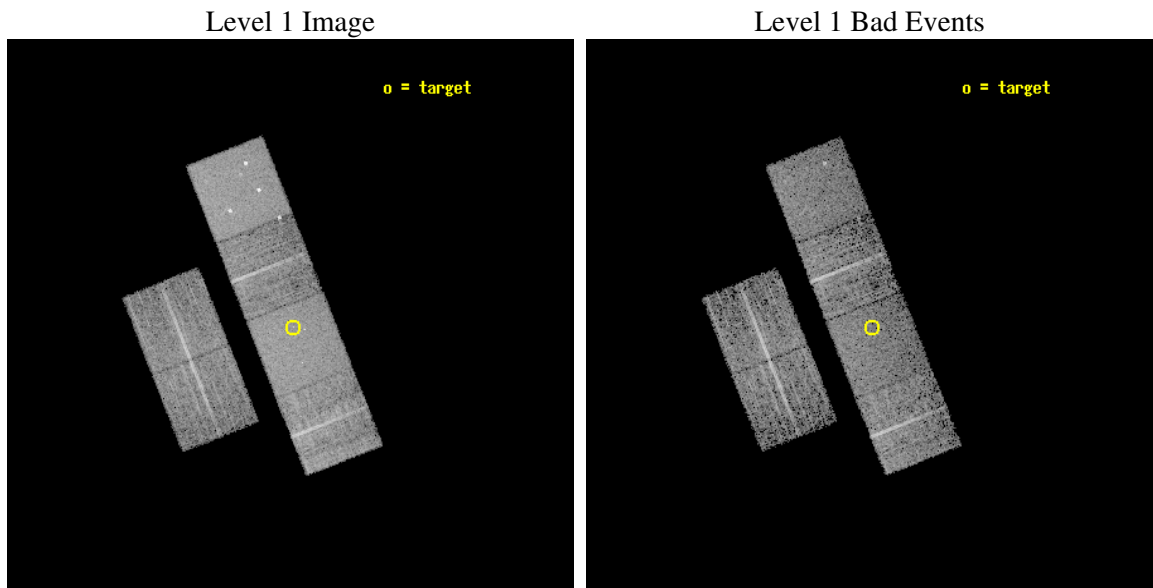
seq_num	700597
obs_id	3158
title	A CHANDRA SURVEY OF THE MOST LUMINOUS QUASARS AT $Z > 4$
observer	Professor Gordon Garmire
object	PSS1326+0743
dtcycle	0
cycle	P
ra_targ	201.549583
dec_targ	7.733056
ra_nom	201.55475515459
dec_nom	7.7413562276449
roll_nom	68.468576399704
revision	2
ontime	5961.6000055522
livetime	5886.1106366373
ontime2	5961.6000055522
ontime3	5961.6000055522
ontime5	5961.6000055522
ontime6	5961.6000055522
ontime7	5961.6000055522
ontime8	5961.6000055522
l2events	74306



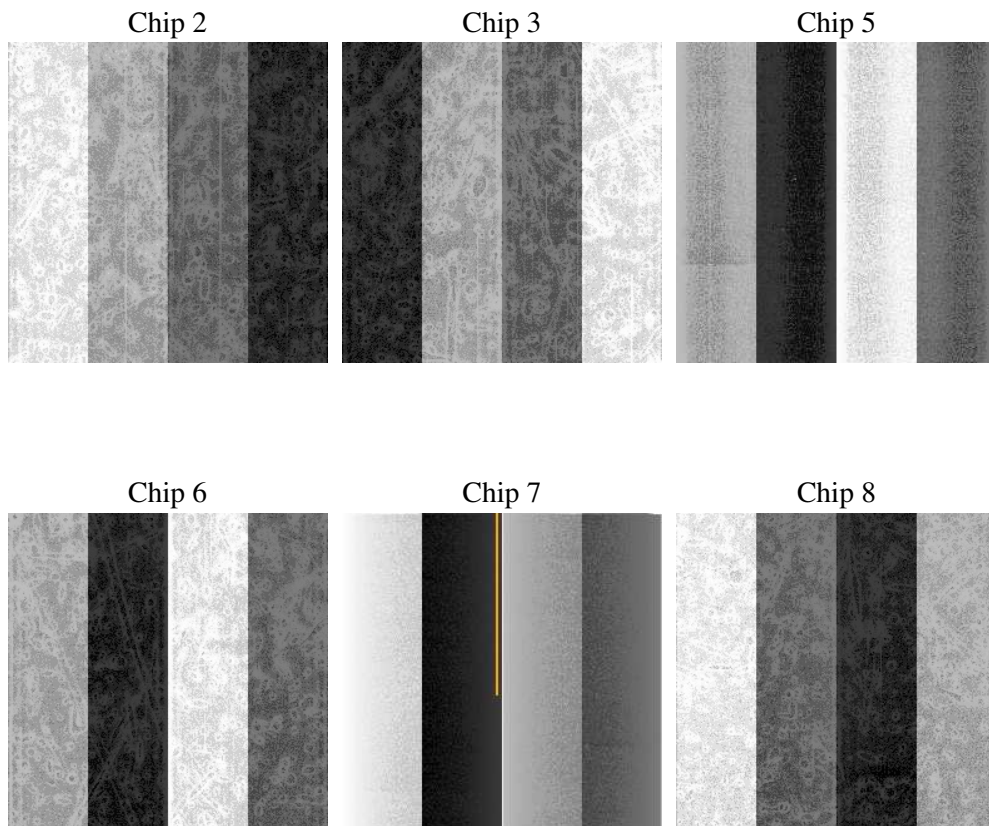
2 OBI

2.1 OBI

2.1.1 Images



2.1.2 Bias



2.1.3 Parameters

obi_num	0
ascdsver	7.6.8.1
caldsver	3.2.3
date	2006-08-26T05:08:24
revision	2

sched_exp_time	6000.000000
ontime	5966.6792701185
ontime2	5966.6792701185
ontime3	5966.6792701185
ontime5	5966.6792701185
ontime6	5966.6792701185
ontime7	5966.6792701185
ontime8	5966.6792701185
l1events	292732

2.1.4 Events

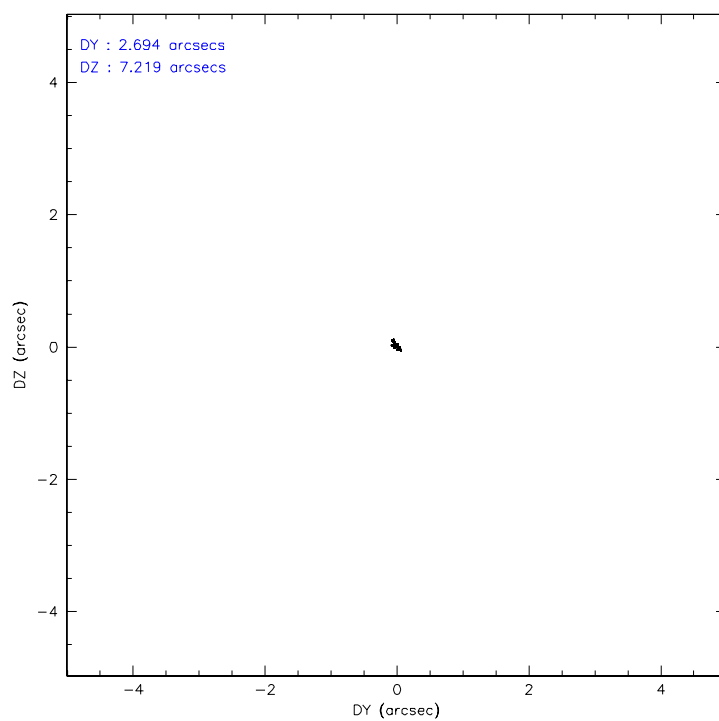
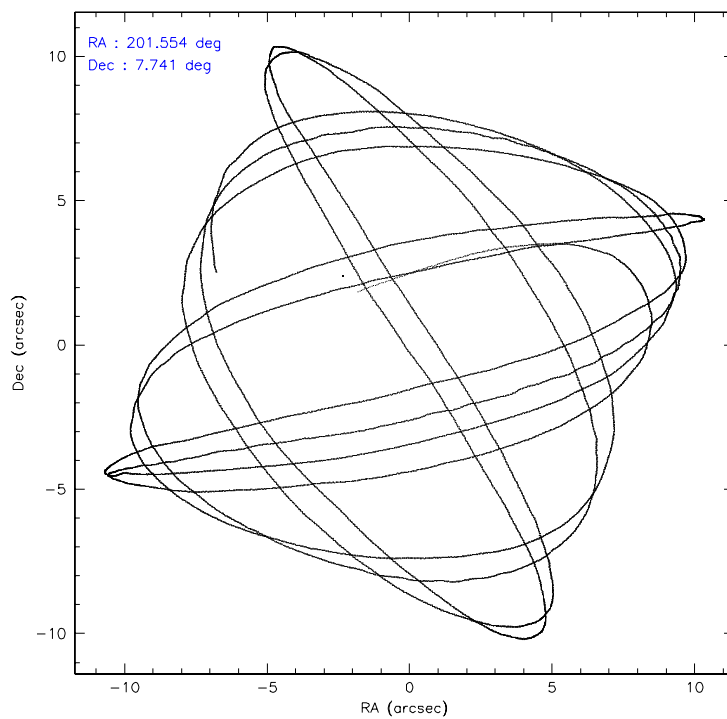
	ccd 2	ccd 3	ccd 5	ccd 6	ccd 7	ccd 8
level 1 events	40922	38849	61786	41550	55824	53801
rejected events	35099	33218	31145	35150	30669	38597
rejected %	85%	85%	50%	84%	54%	71%

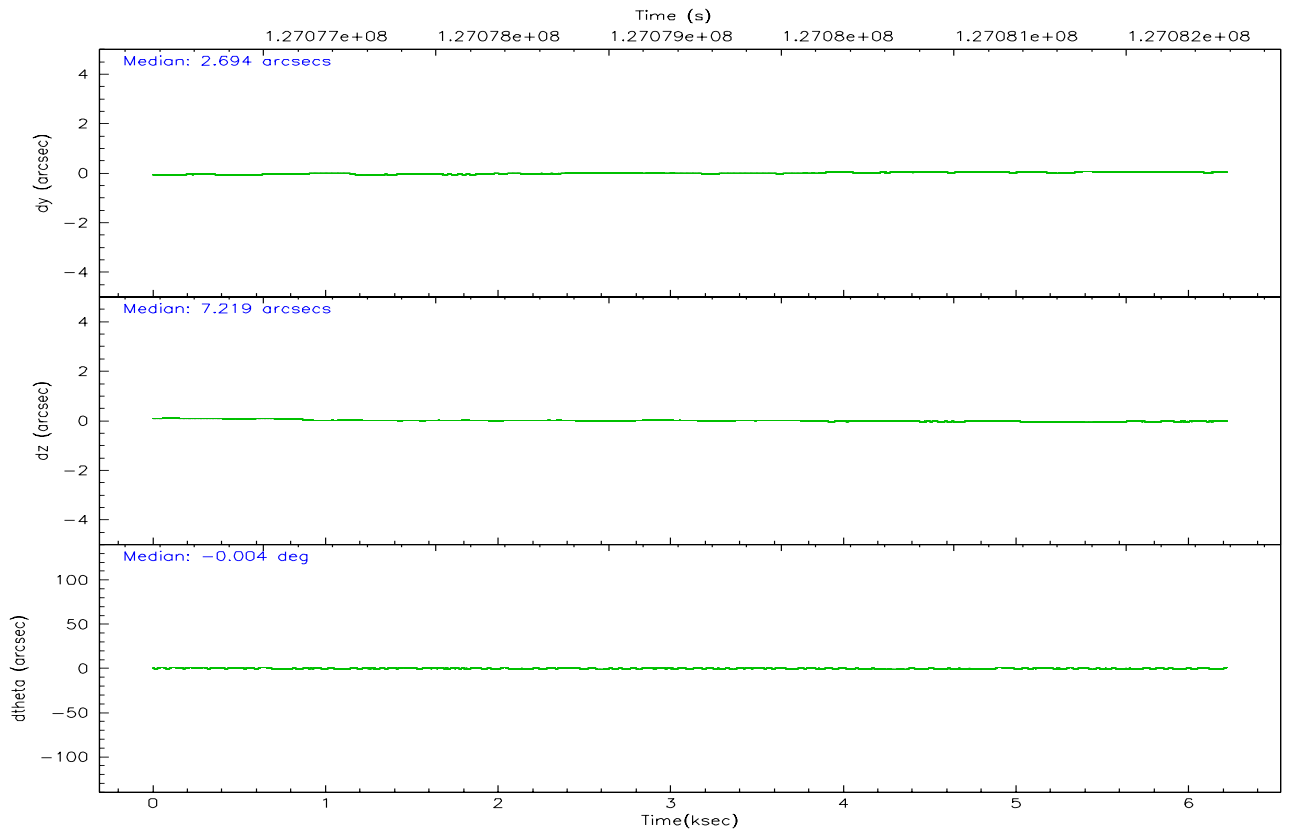
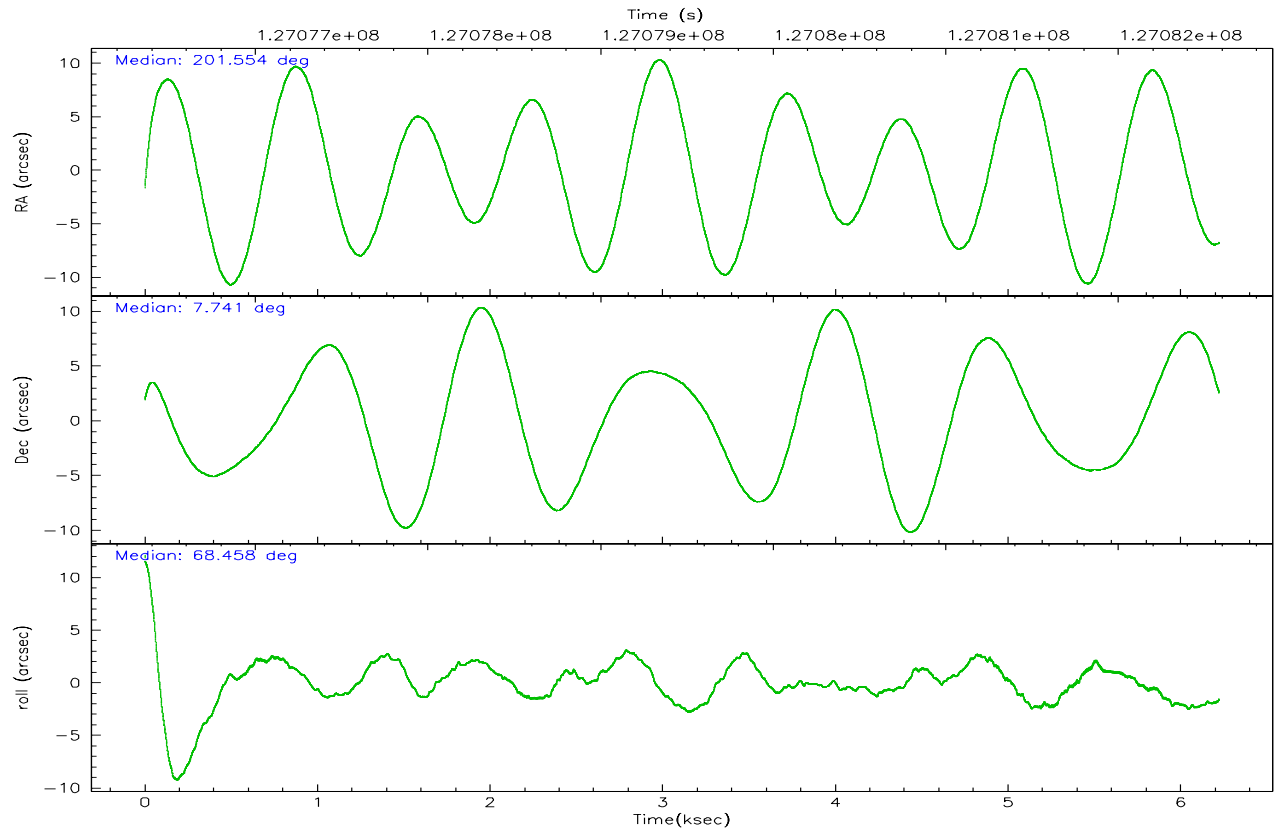
	ccd 2	ccd 3	ccd 5	ccd 6	ccd 7	ccd 8
grade 0 events	2674	2614	3965	3145	2118	5490
	6%	6%	6%	7%	3%	10%
grade 1 events	23	19	93	26	26	35
	0%	0%	0%	0%	0%	0%
grade 2 events	1323	1208	9430	1349	5949	2990
	3%	3%	15%	3%	10%	5%
grade 3 events	423	445	823	498	1365	1816
	1%	1%	1%	1%	2%	3%
grade 4 events	449	442	828	449	1418	1604
	1%	1%	1%	1%	2%	2%
grade 5 events	1274	1462	2790	1569	3518	2125
	3%	3%	4%	3%	6%	3%
grade 6 events	957	924	15610	964	14326	3307
	2%	2%	25%	2%	25%	6%
grade 7 events	33799	31735	28247	33550	27104	36434
	82%	81%	45%	80%	48%	67%

2.2 Compared Parameters

Parameter	Planned	Actual	Parameter	Planned	Actual
Instrument	ACIS	ACIS	Obspar format version number	6	6
Detector	ACIS-235678	ACIS-235678	Obspar file type	PREDICTED	ACTUAL
Grating	NONE	NONE	Obspar update status	NONE	UPDATED
Data mode	FAINT	FAINT	On-chip summing requested	N	N
Observation mode	POINTING	POINTING	Subarray requested	NONE	NONE
Pointing RA	201.559119	201.5547551545858	Alternating exposures requested	N	N
Pointing Dec	7.714415	7.741356227644875	Primary exposure time	0.000000	3.2
Pointing Roll	68.311343	68.46857639970438			
SIM focus pos (mm)	-0.684267	-0.6828225247311905			
SIM defocus (mm)	0	0.001444936568705701			
SIM translation stage pos (mm)	-190.132523	-190.1400660498719			
SIM translation stage offset (mm)	0	0.00754346686406393			
Observation start time	127076584.184000	127075595.70831			
Observation start date	2002-01-10T19:02:00	2002-01-10T18:46:35			
Observation end time	127082584.184000	127083229.90862			
Observation end date	2002-01-10T20:42:00	2002-01-10T20:53:49			
Read mode	TIMED	TIMED			

2.3 Aspect



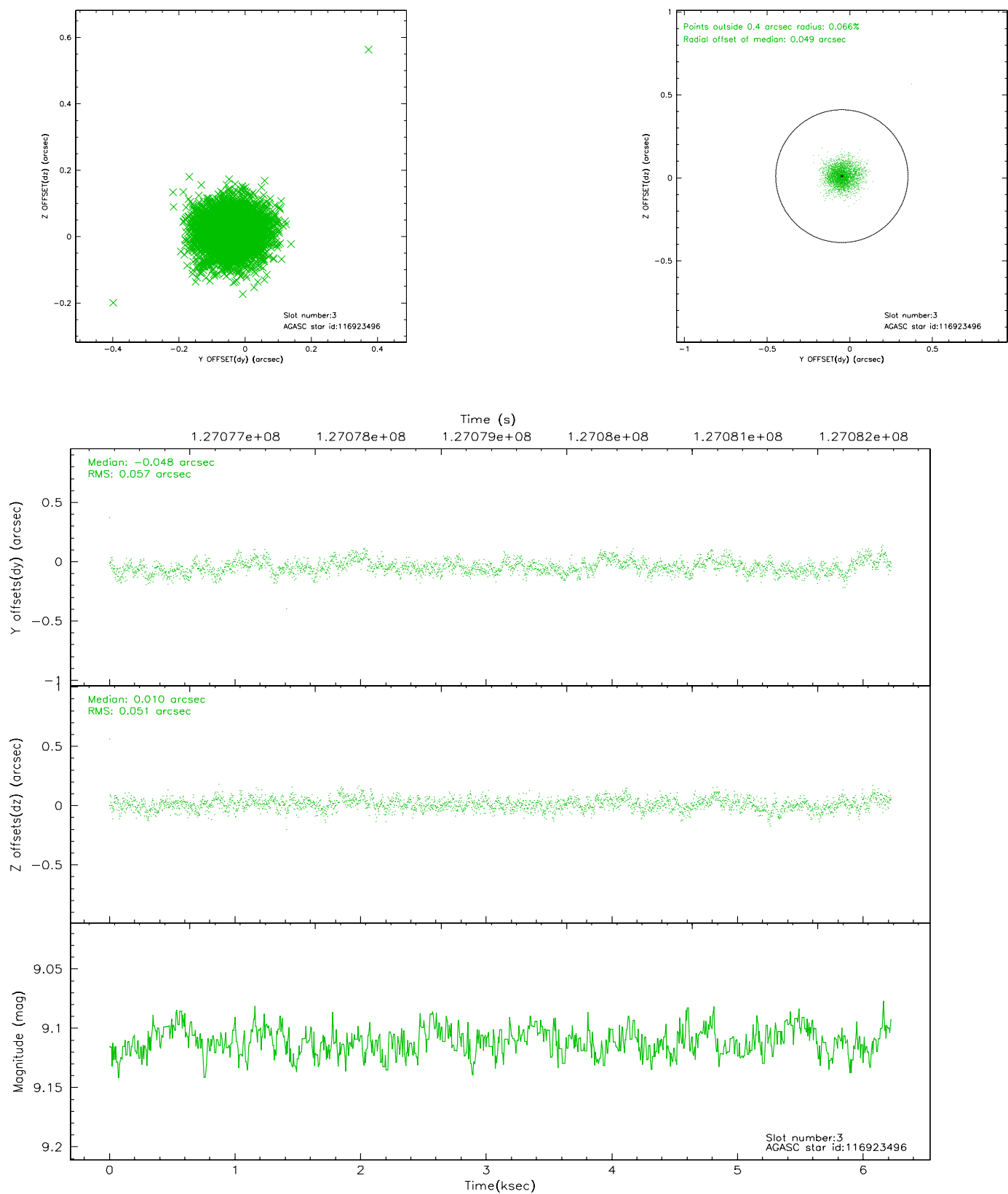


Slot Statistics

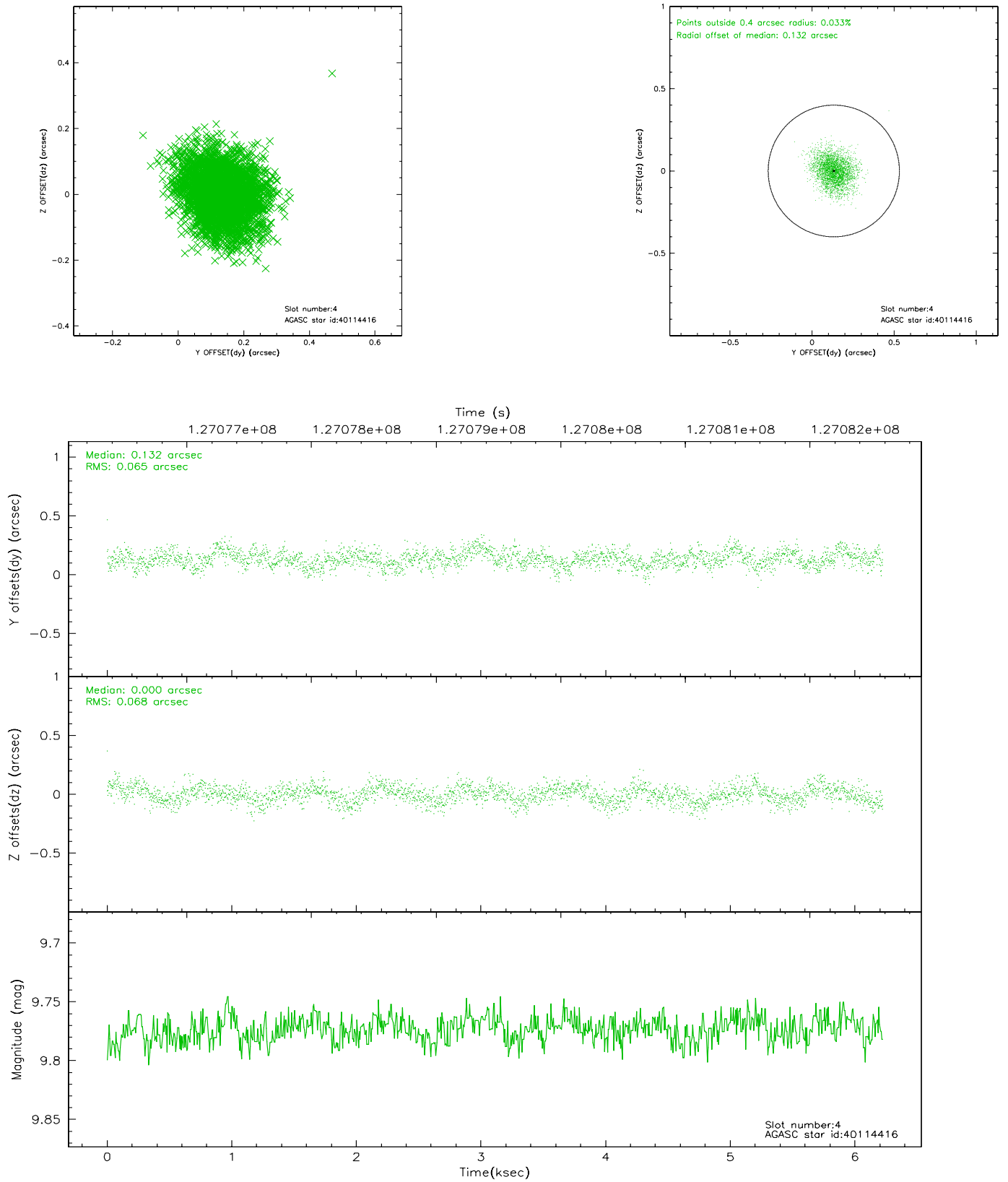
slot	status	id	mag	n_pts	med_dy	med_dz	dr1	dr2	ra	dec	mean_y	mean_z
0	FID	ACIS-S-2	7.11	1518	0.001	0.031	0.006	0.010	0.000000	0.000000	-755.32	-1728.37
1	FID	ACIS-S-4	7.20	1518	-0.090	-0.009	0.005	0.009	0.000000	0.000000	2157.43	179.10
2	FID	ACIS-S-5	7.23	1518	0.058	-0.013	0.006	0.010	0.000000	0.000000	-1806.89	173.84
3	GUIDE	116923496	9.11	3034	-0.048	0.010	0.080	0.131	202.027748	7.649396	402.90	-1640.58
4	GUIDE	40114416	9.77	3035	0.132	0.000	0.100	0.163	201.610541	7.400035	-982.09	-590.36
5	GUIDE	116791824	9.19	3033	-0.056	-0.191	0.080	0.127	201.287828	7.911044	301.27	1159.42
6	GUIDE	40113544	7.94	3036	0.097	0.000	0.060	0.099	201.675538	7.453262	-718.35	-734.01
7	GUIDE	116923528	9.77	3033	-0.136	0.183	0.122	0.194	202.304546	7.771186	1176.13	-2395.17

2.4 Star Slots

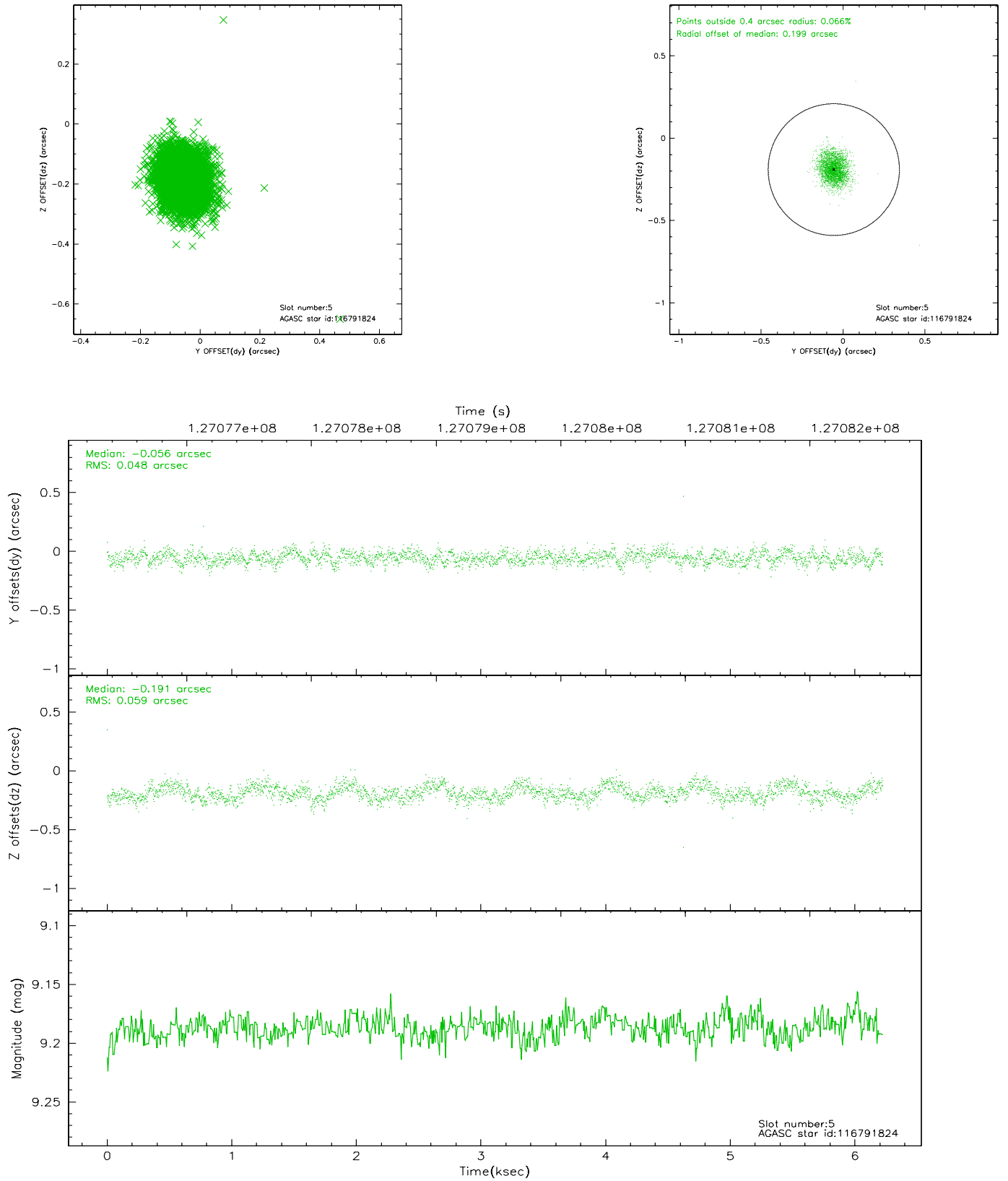
2.4.1 Slot 3



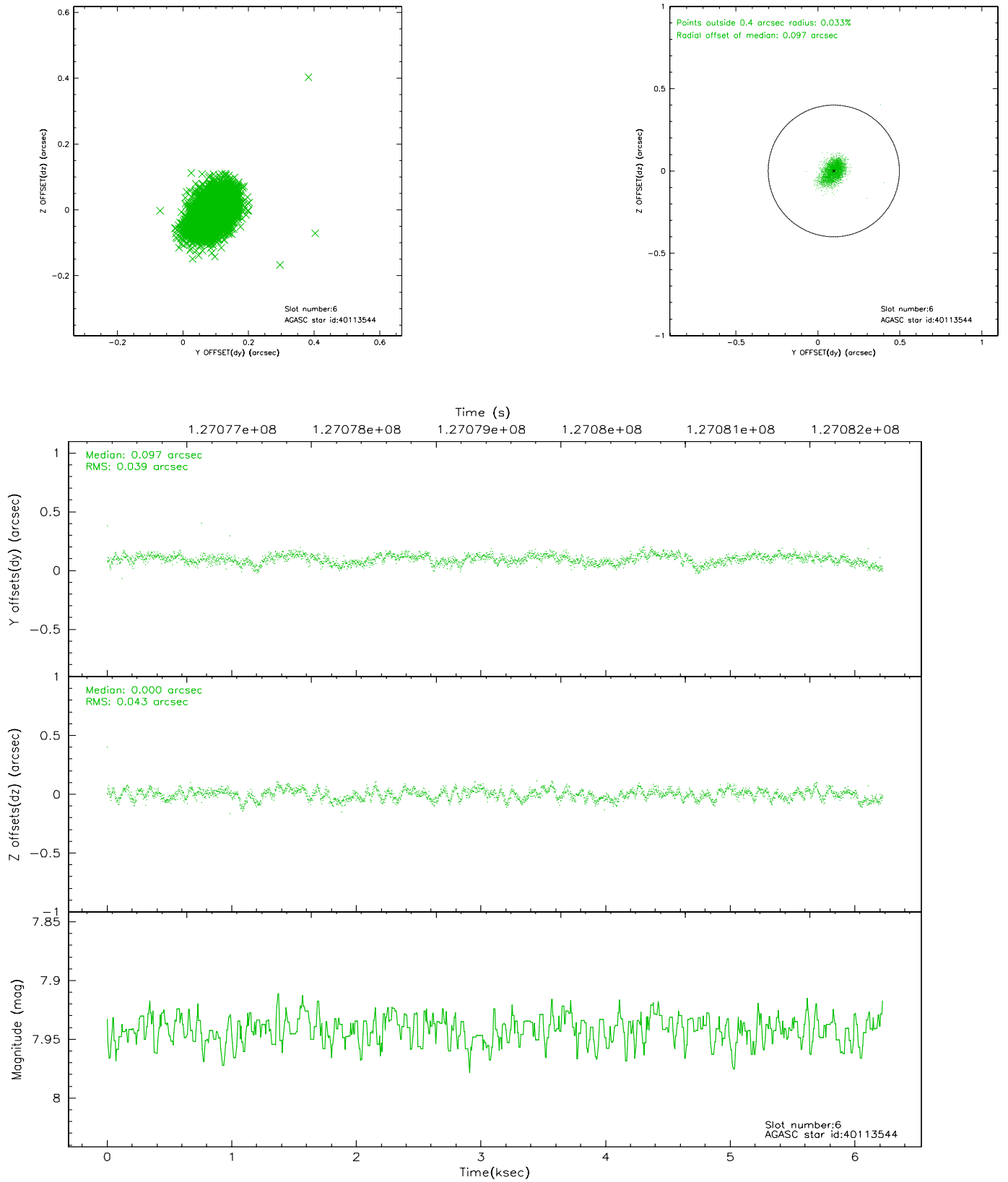
2.4.2 Slot 4



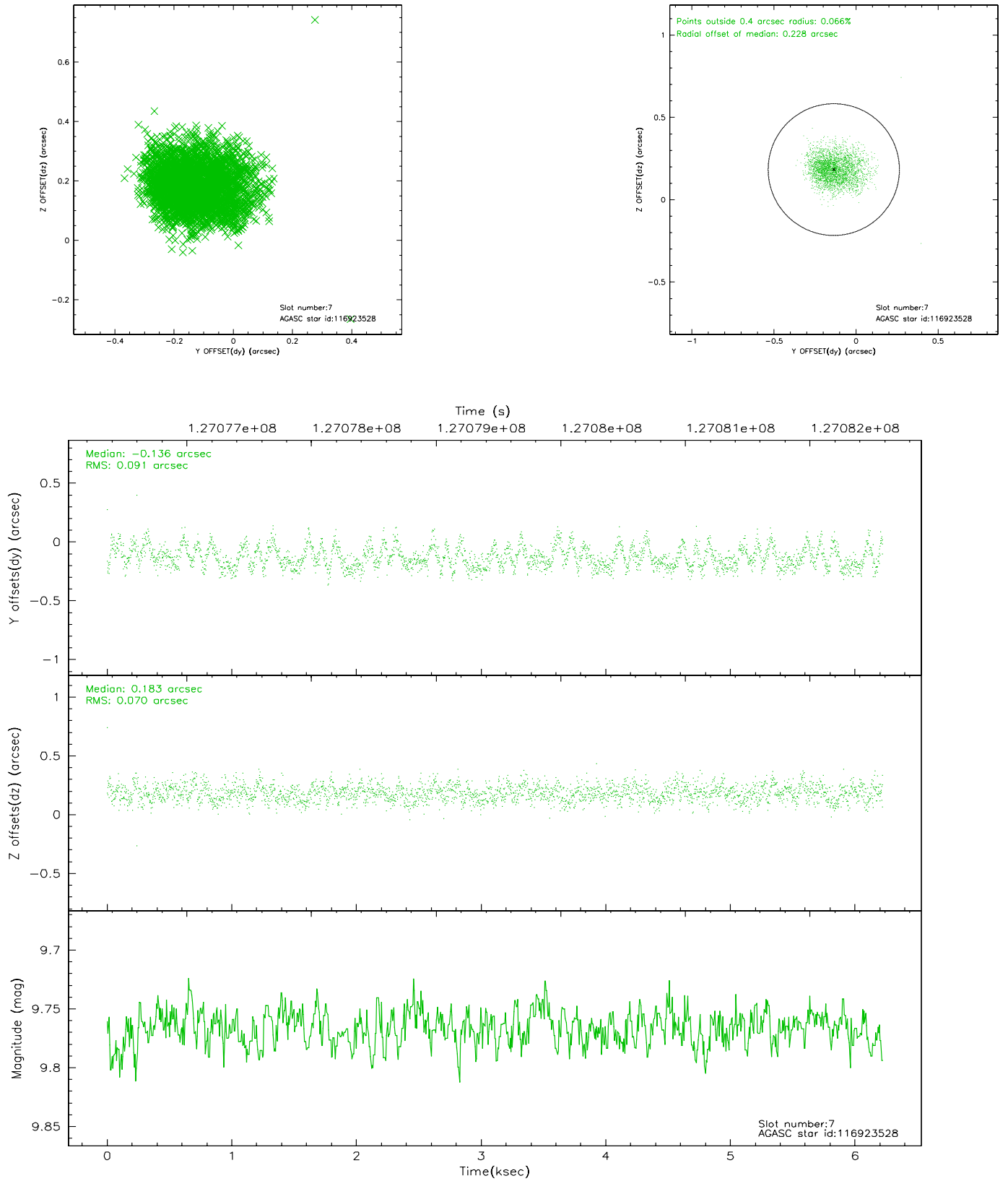
2.4.3 Slot 5



2.4.4 Slot 6

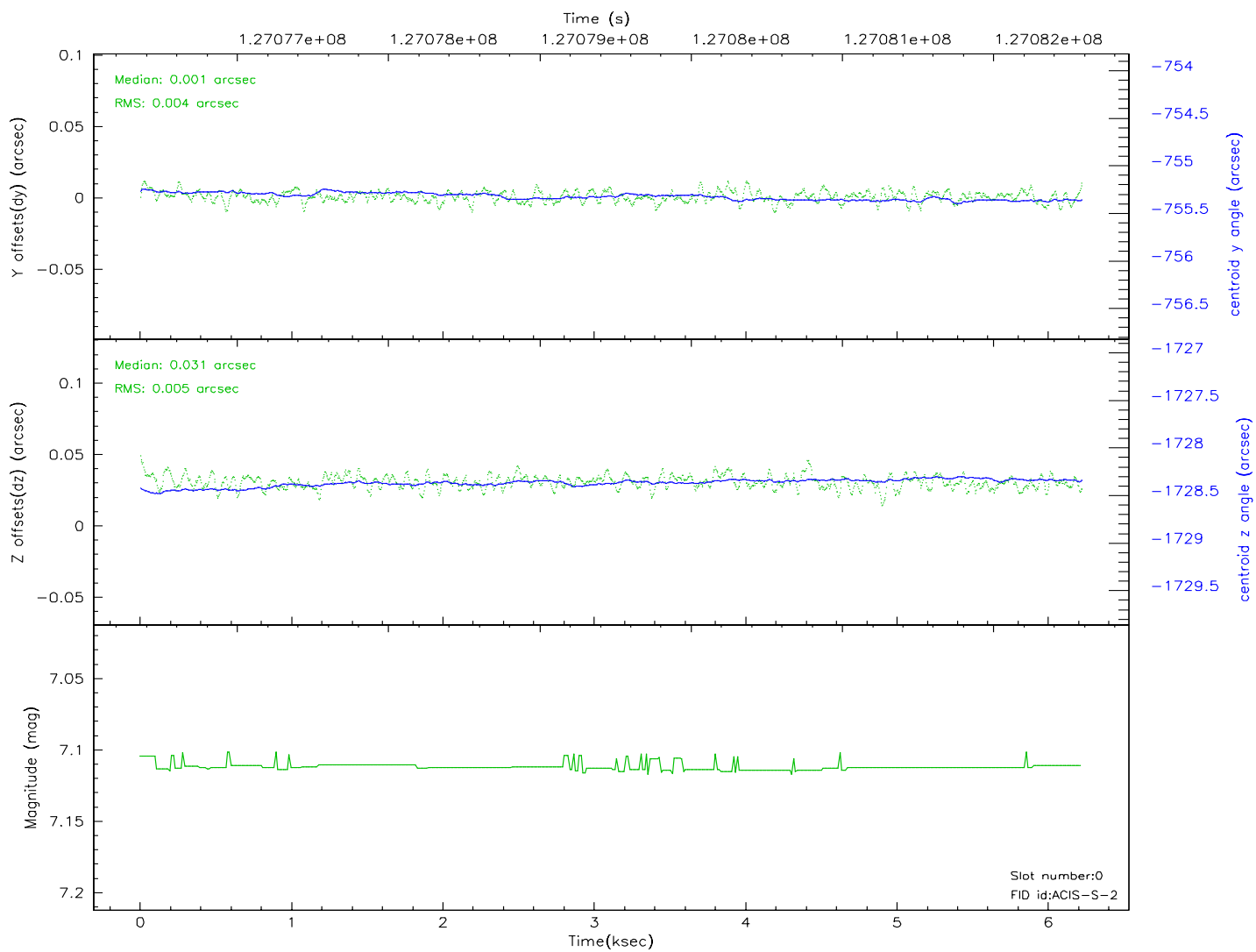
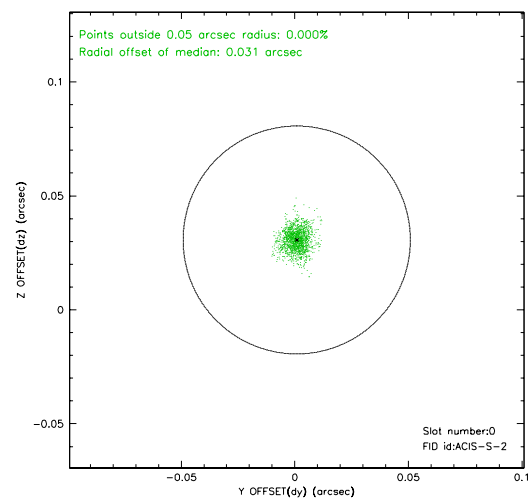
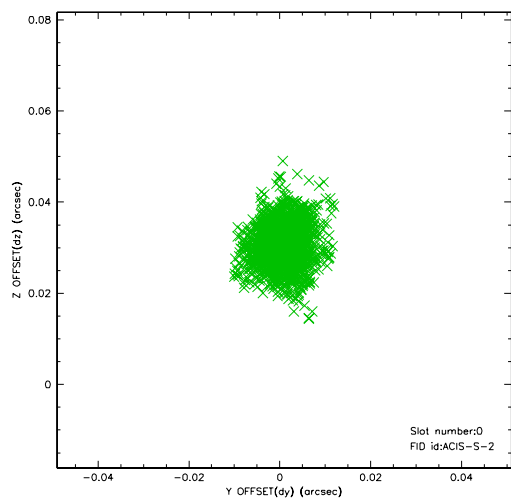


2.4.5 Slot 7

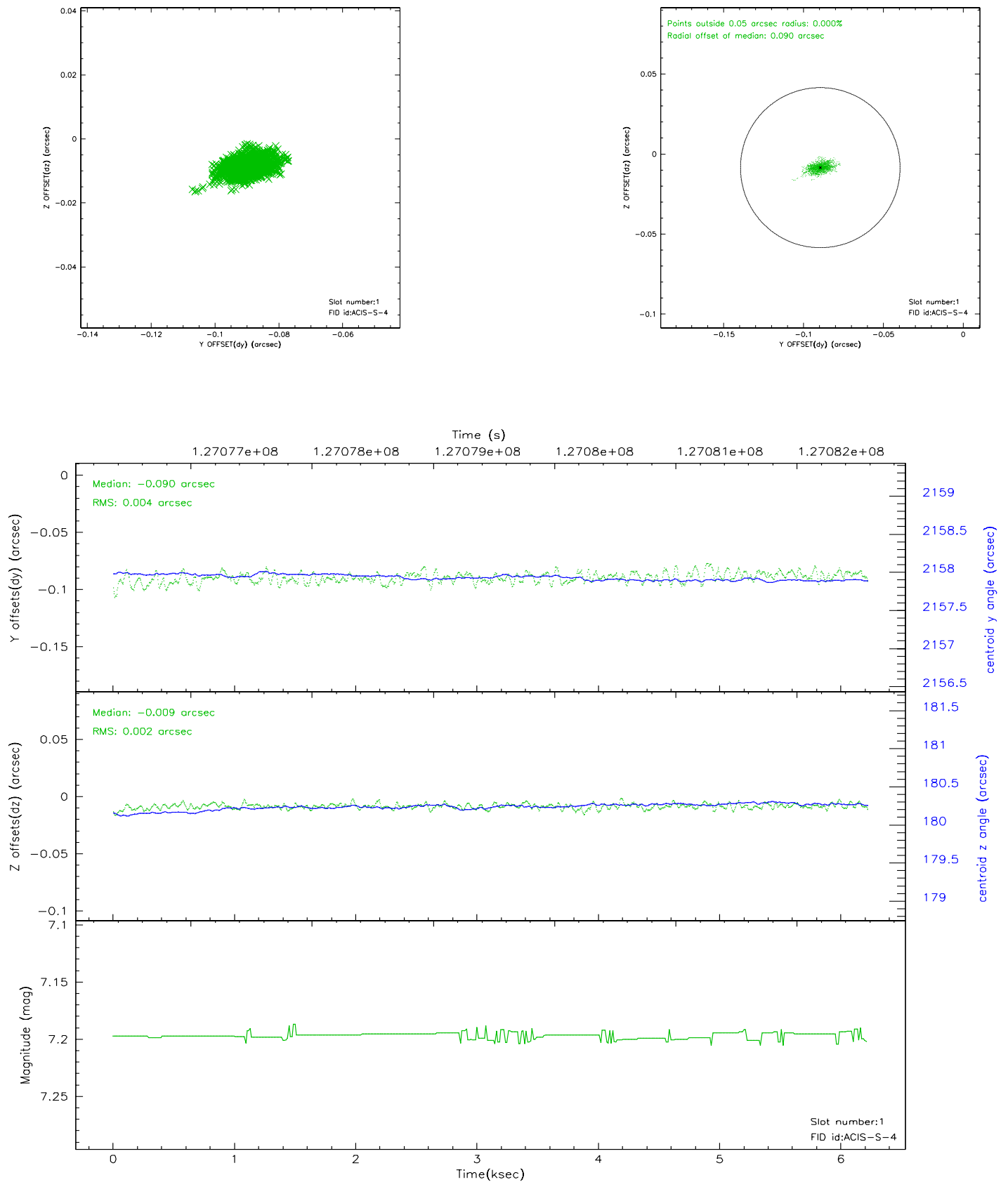


2.5 FID Slots

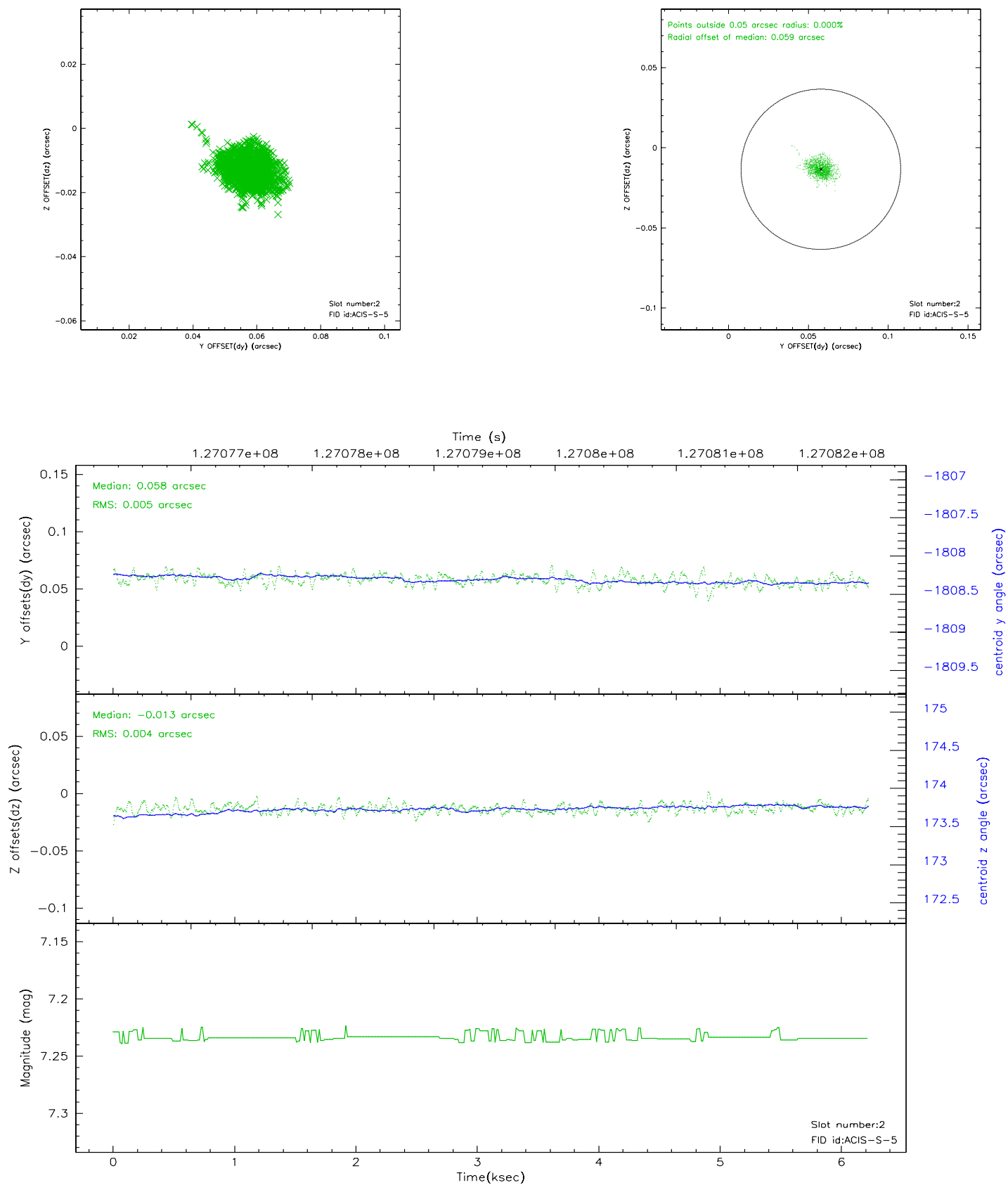
2.5.1 Slot 0



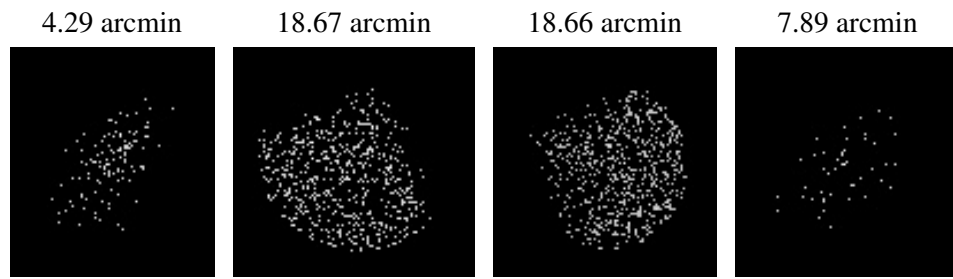
2.5.2 Slot 1



2.5.3 Slot 2



3 Point Sources



A Summary

A.1 Status

V&V Scientist	Jen Lauer
V&V Date (YYYY-MM-DD)	2006.08.28
V&V Edition	1
V&V Disposition and Status	OK
V&V Charge Time	5.964

A.2 Comments