

V&V Reference Report

L2 ASCDS Version : 7.6.9

Observation 3028 - L2 Version 001
Chandra X-Ray Center

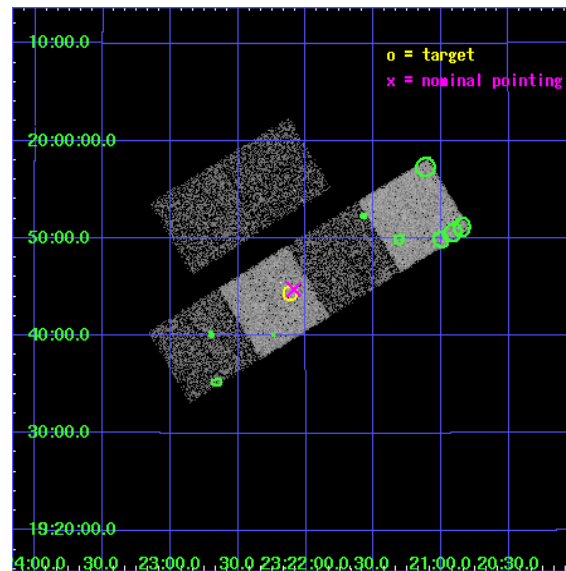
L2 Processing Date : Sep 28 2006

Contents

1	Front	2
2	OBI	3
2.1	OBI	3
2.1.1	Images	3
2.1.2	Bias	3
2.1.3	Parameters	4
2.1.4	Events	4
2.2	Compared Parameters	5
2.3	Aspect	6
2.4	Star Slots	9
2.4.1	Slot 3	9
2.4.2	Slot 4	10
2.4.3	Slot 5	11
2.4.4	Slot 6	12
2.4.5	Slot 7	13
2.5	FID Slots	14
2.5.1	Slot 0	14
2.5.2	Slot 1	15
2.5.3	Slot 2	16
3	Point Sources	17
A	Summary	18
A.1	Status	18
A.2	Comments	18

1 Front

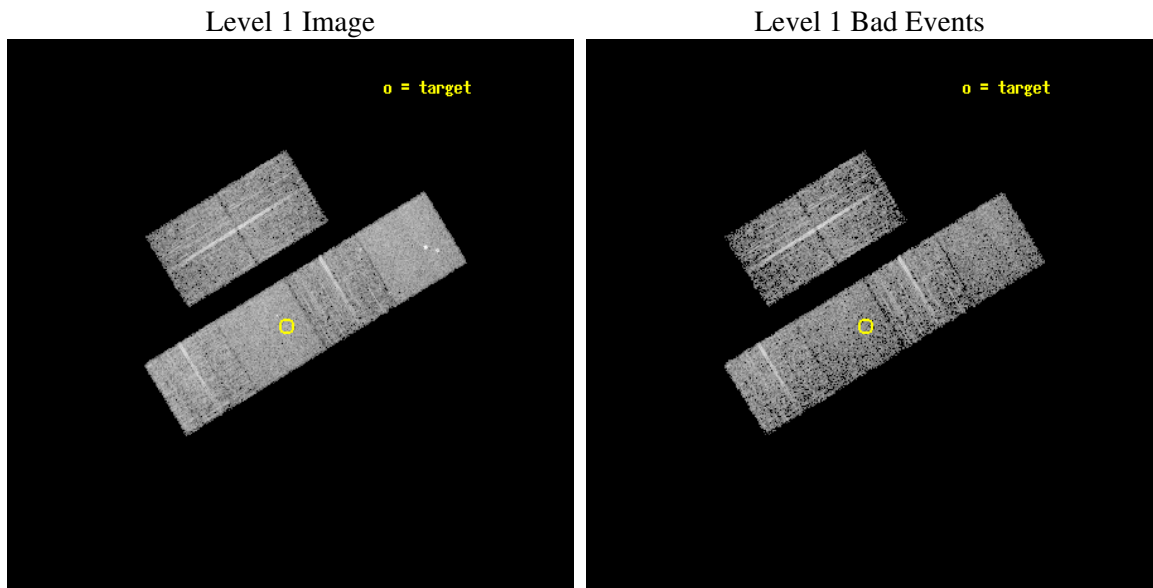
seq_num	700467
obs_id	3028
title	A SYSTEMATIC X-RAY SURVEY OF SUBMILLIMETRE-LUMINOUS QUASARS
observer	Dr Robert Priddey
object	PSS2322+1944
dtcycle	0
cycle	P
ra_targ	350.529875
dec_targ	19.73975
ra_nom	350.52212274875
dec_nom	19.746094482643
roll_nom	148.58392223391
revision	2
ontime	4959.9999815226
livetime	4897.1934752031
ontime2	4959.9999815226
ontime3	4959.9999815226
ontime5	4959.9999815226
ontime6	4959.9999815226
ontime7	4959.9999815226
ontime8	4959.9999815226
l2events	45266



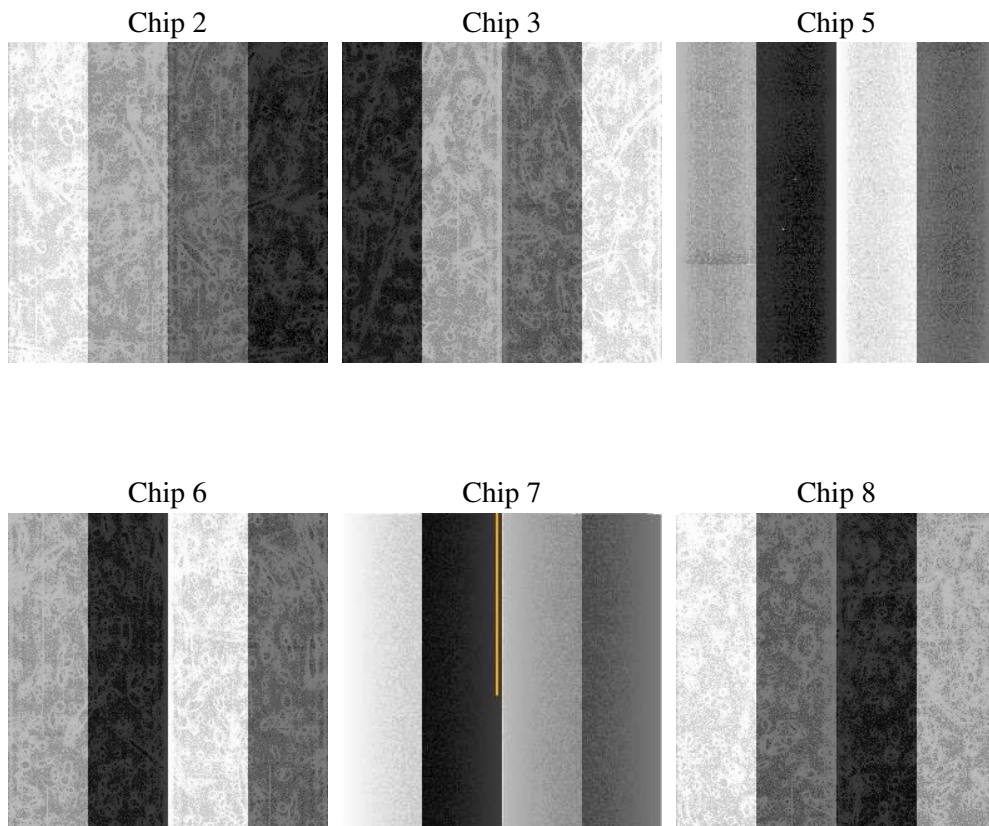
2 OBI

2.1 OBI

2.1.1 Images



2.1.2 Bias



2.1.3 Parameters

obi_num	1
ascdsver	7.6.9
caldsver	3.2.3
date	2006-09-28T17:36:45
revision	2

sched_exp_time	5000.000000
ontime	4965.2190549672
ontime2	4965.2190549672
ontime3	4965.2190549672
ontime5	4965.2190549672
ontime6	4965.2190549672
ontime7	4965.2190549672
ontime8	4965.2190549672
l1events	214096

2.1.4 Events

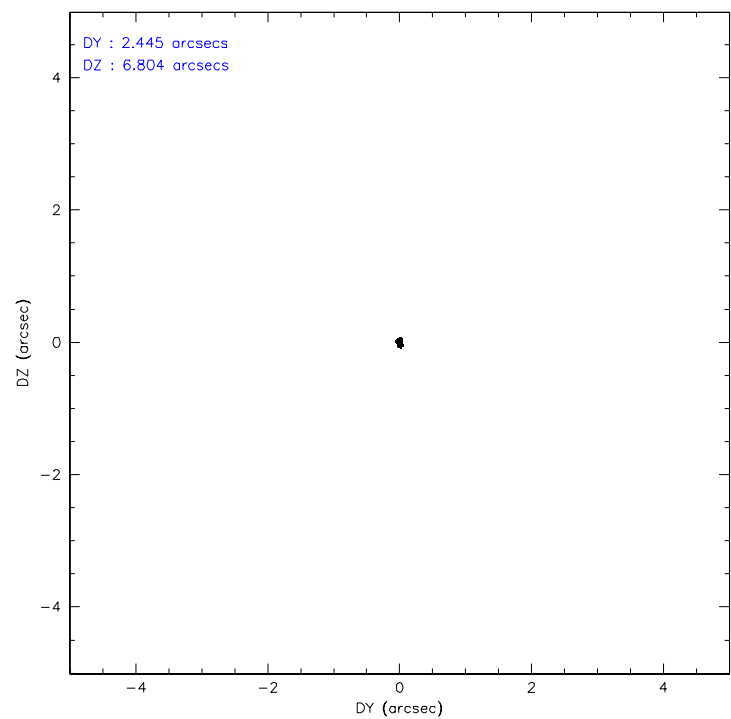
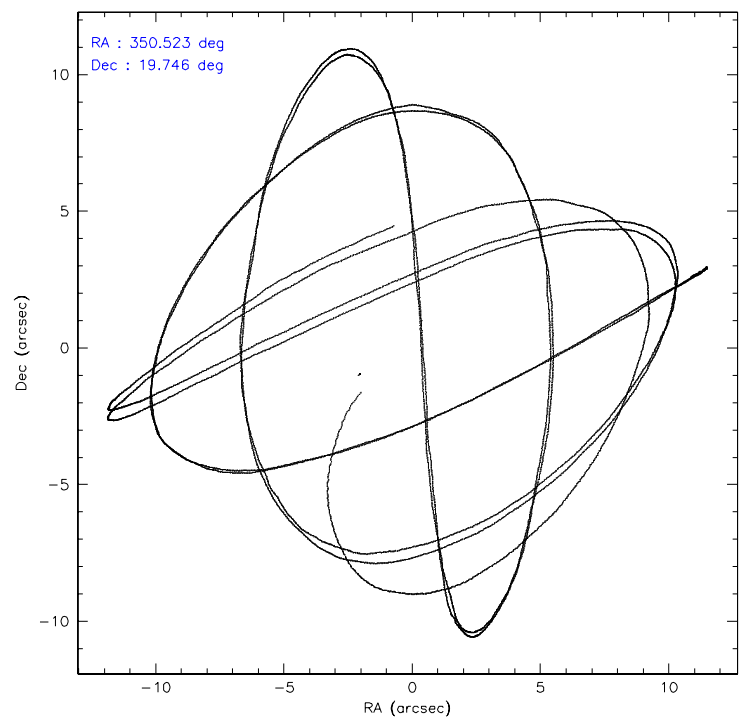
	ccd 2	ccd 3	ccd 5	ccd 6	ccd 7	ccd 8
level 1 events	30712	29439	42380	32389	39043	40133
rejected events	27114	25893	23852	28478	23918	31014
rejected %	88%	87%	56%	87%	61%	77%

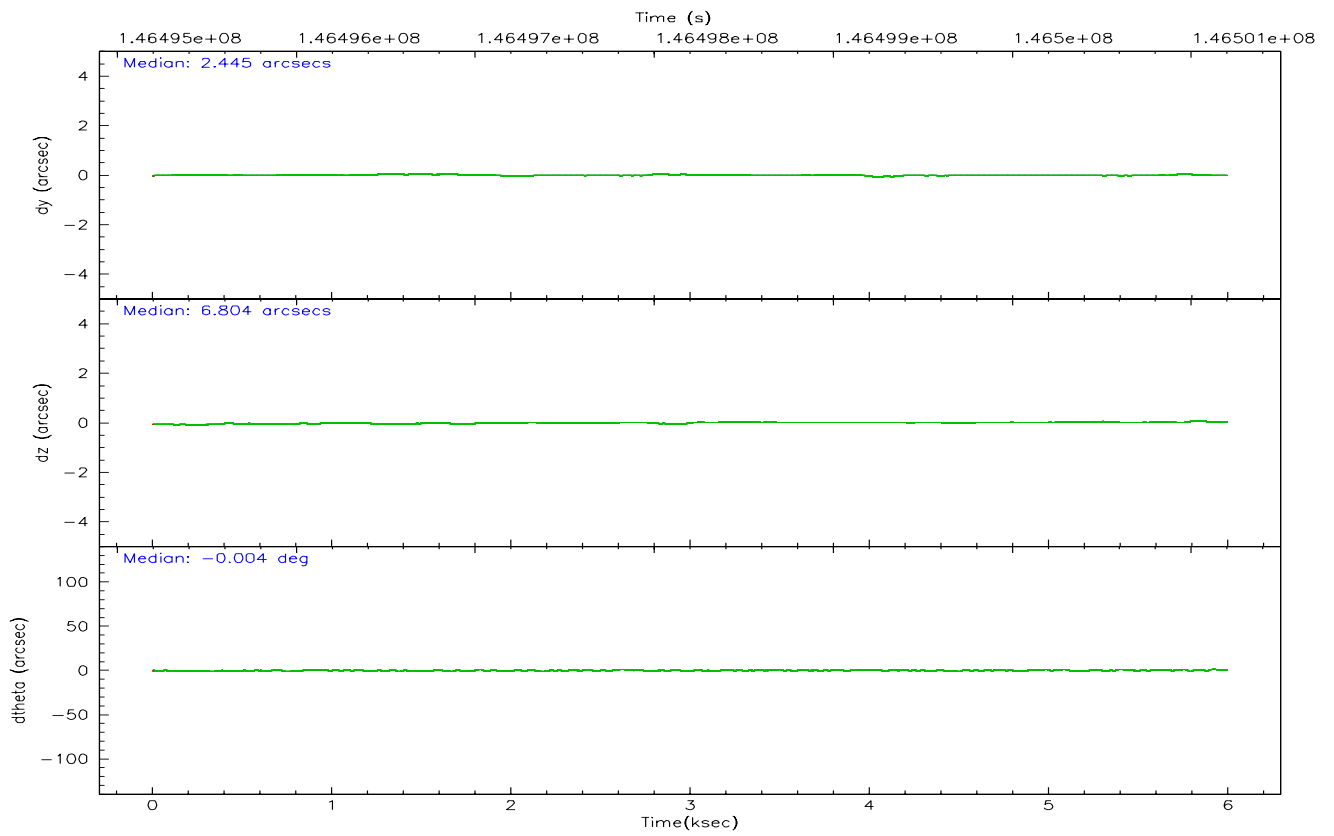
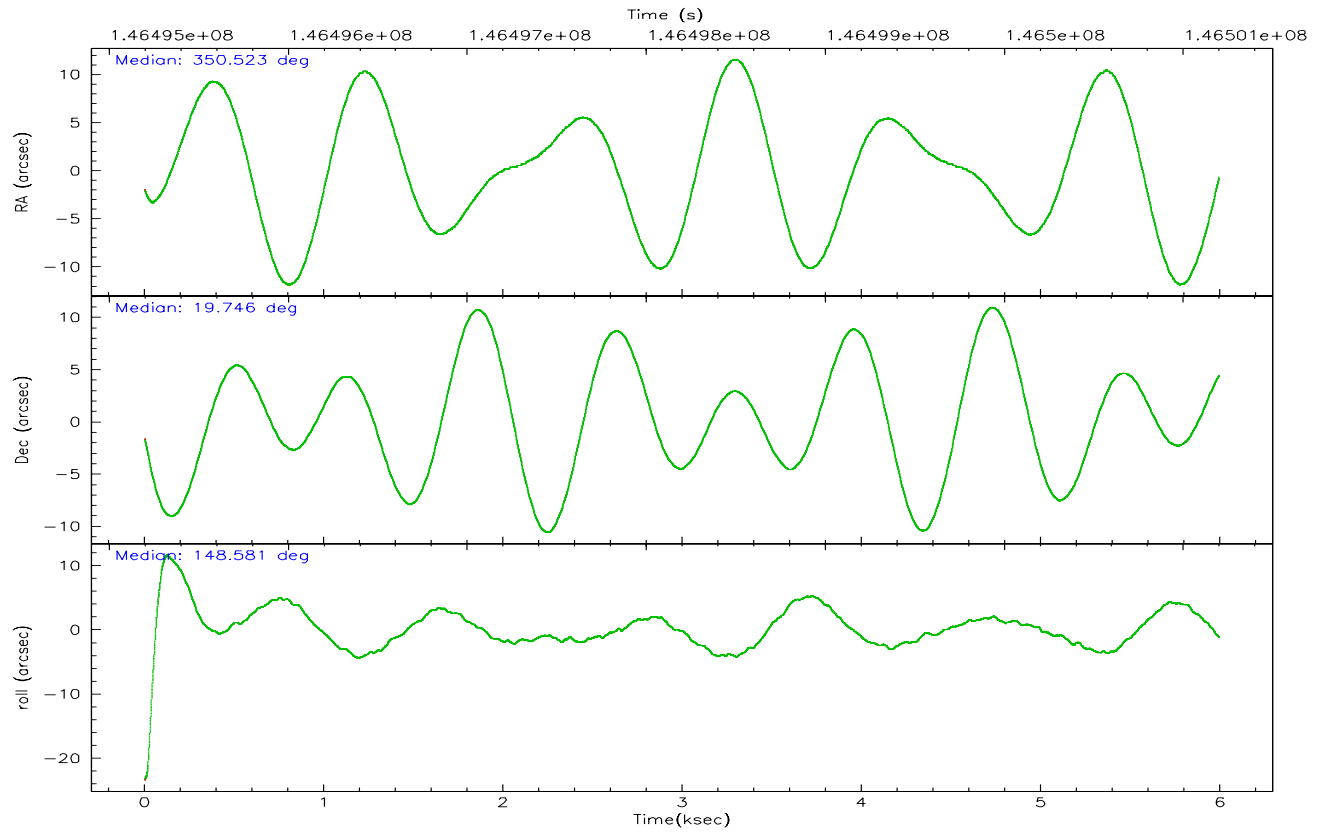
	ccd 2	ccd 3	ccd 5	ccd 6	ccd 7	ccd 8
grade 0 events	1653	1559	1651	1710	988	3006
	5%	5%	3%	5%	2%	7%
grade 1 events	10	13	39	10	27	24
	0%	0%	0%	0%	0%	0%
grade 2 events	678	656	5390	815	3690	1920
	2%	2%	12%	2%	9%	4%
grade 3 events	344	366	432	316	787	1038
	1%	1%	1%	0%	2%	2%
grade 4 events	317	325	373	337	756	927
	1%	1%	0%	1%	1%	2%
grade 5 events	1104	1208	1973	1259	2366	1745
	3%	4%	4%	3%	6%	4%
grade 6 events	612	646	10716	739	8922	2229
	1%	2%	25%	2%	22%	5%
grade 7 events	25994	24666	21806	27203	21507	29244
	84%	83%	51%	83%	55%	72%

2.2 Compared Parameters

Parameter	Planned	Actual	Parameter	Planned	Actual
Instrument	ACIS	ACIS	Obspar format version number	6	6
Detector	ACIS-235678	ACIS-235678	Obspar file type	PREDICTED	ACTUAL
Grating	NONE	NONE	Obspar update status	NONE	UPDATED
Data mode	FAINT	FAINT	Number of optional ACIS chips dropped	0	0
Observation mode	POINTING	POINTING	On-chip summing requested	N	N
Pointing RA	350.551105	350.5221227487453	Subarray requested	NONE	NONE
Pointing Dec	19.745853	19.74609448264297	Alternating exposures requested	N	N
Pointing Roll	148.417573	148.5839222339138	Primary exposure time	0.000000	3.2
SIM focus pos (mm)	-0.684267	-0.6828225247311905			
SIM defocus (mm)	0	0.001444936568705701			
SIM translation stage pos (mm)	-190.132523	-190.1400660498719			
SIM translation stage offset (mm)	0	0.00754346686406393			
Observation start time	146496196.184000	146494839.06171			
Observation start date	2002-08-23T13:22:12	2002-08-23T13:00:39			
Observation end time	146501196.184000	146501707.58699			
Observation end date	2002-08-23T14:45:32	2002-08-23T14:55:07			
Read mode	TIMED	TIMED			

2.3 Aspect



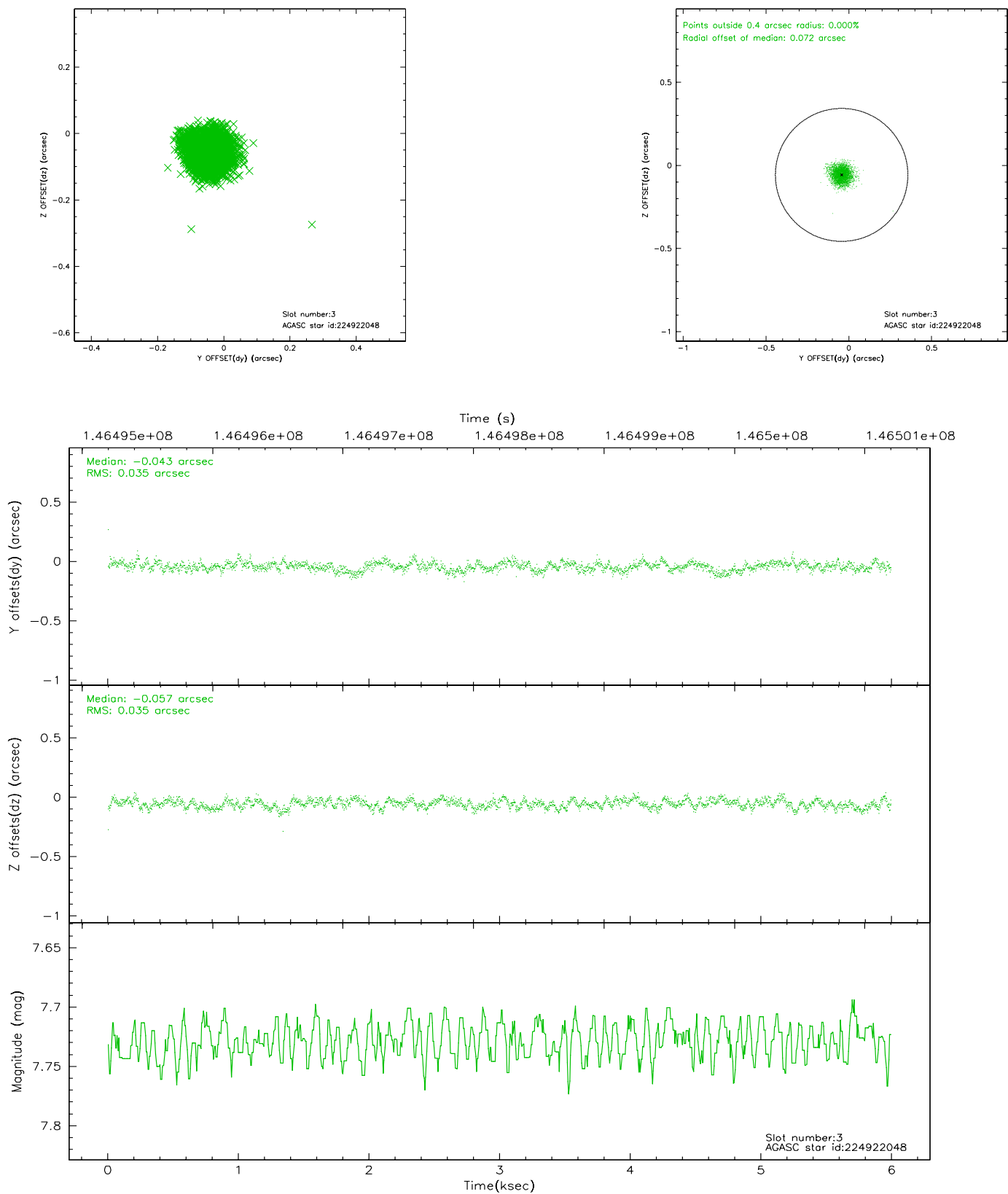


Slot Statistics

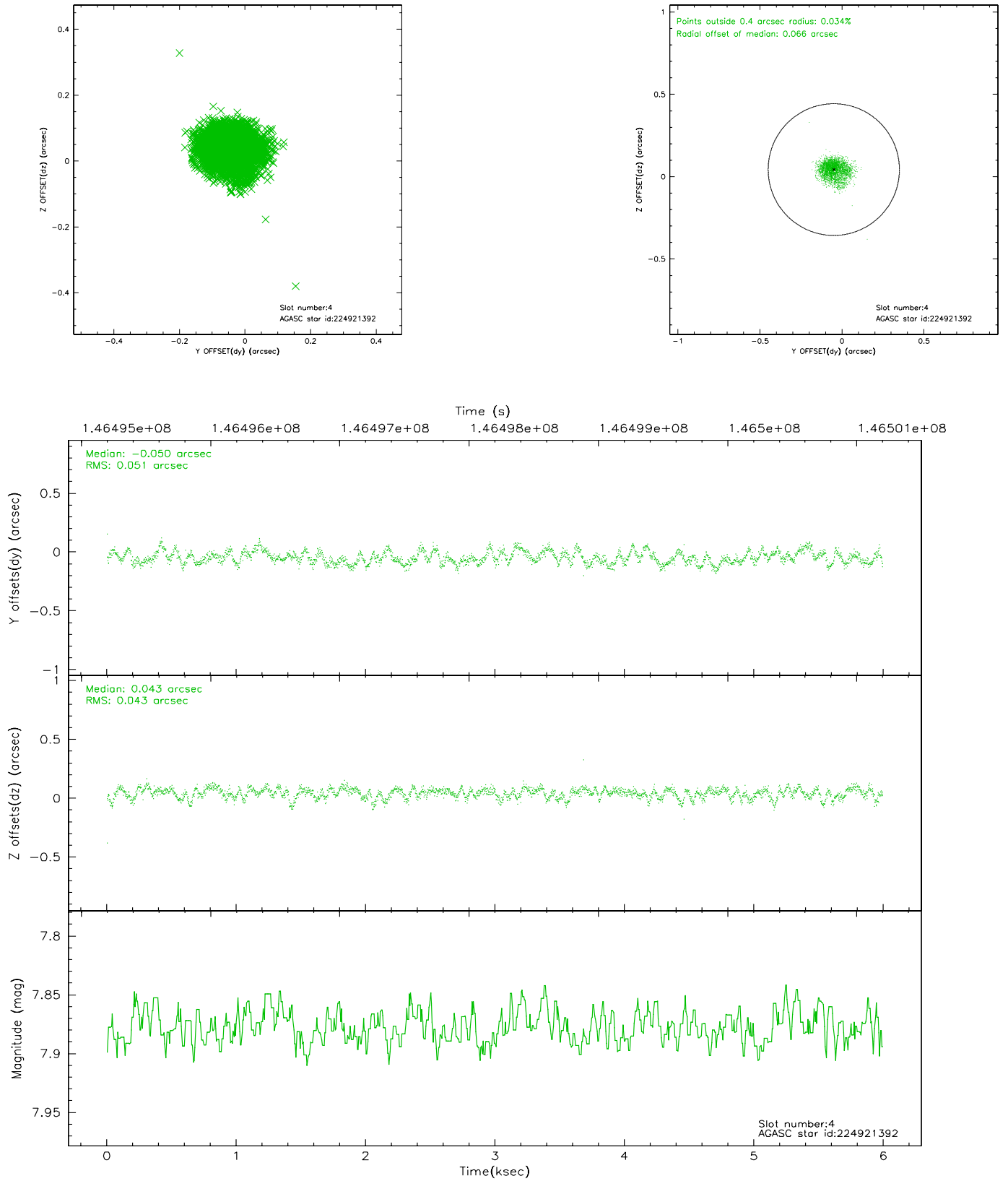
slot	status	id	mag	n_pts	med_dy	med_dz	dr1	dr2	ra	dec	mean_y	mean_z
0	FID	ACIS-S-2	7.11	1462	-0.012	0.038	0.006	0.010	0.000000	0.000000	-755.07	-1727.93
1	FID	ACIS-S-4	7.20	1462	-0.070	-0.004	0.005	0.008	0.000000	0.000000	2157.69	179.51
2	FID	ACIS-S-5	7.24	1462	0.051	-0.025	0.006	0.010	0.000000	0.000000	-1806.59	174.26
3	GUIDE	224922048	7.73	2924	-0.043	-0.057	0.052	0.083	350.167102	19.840789	1289.33	388.51
4	GUIDE	224921392	7.88	2924	-0.050	0.043	0.071	0.112	350.555111	19.400096	-661.70	1053.62
5	GUIDE	225326160	8.84	2922	0.004	0.115	0.088	0.135	350.963259	20.089095	-537.37	-1783.64
6	GUIDE	224927368	9.08	2923	0.047	-0.031	0.069	0.113	350.863404	19.512813	-1339.93	157.98
7	GUIDE	224929096	9.60	2921	0.045	-0.072	0.129	0.211	350.714363	18.945567	-1981.05	2162.73

2.4 Star Slots

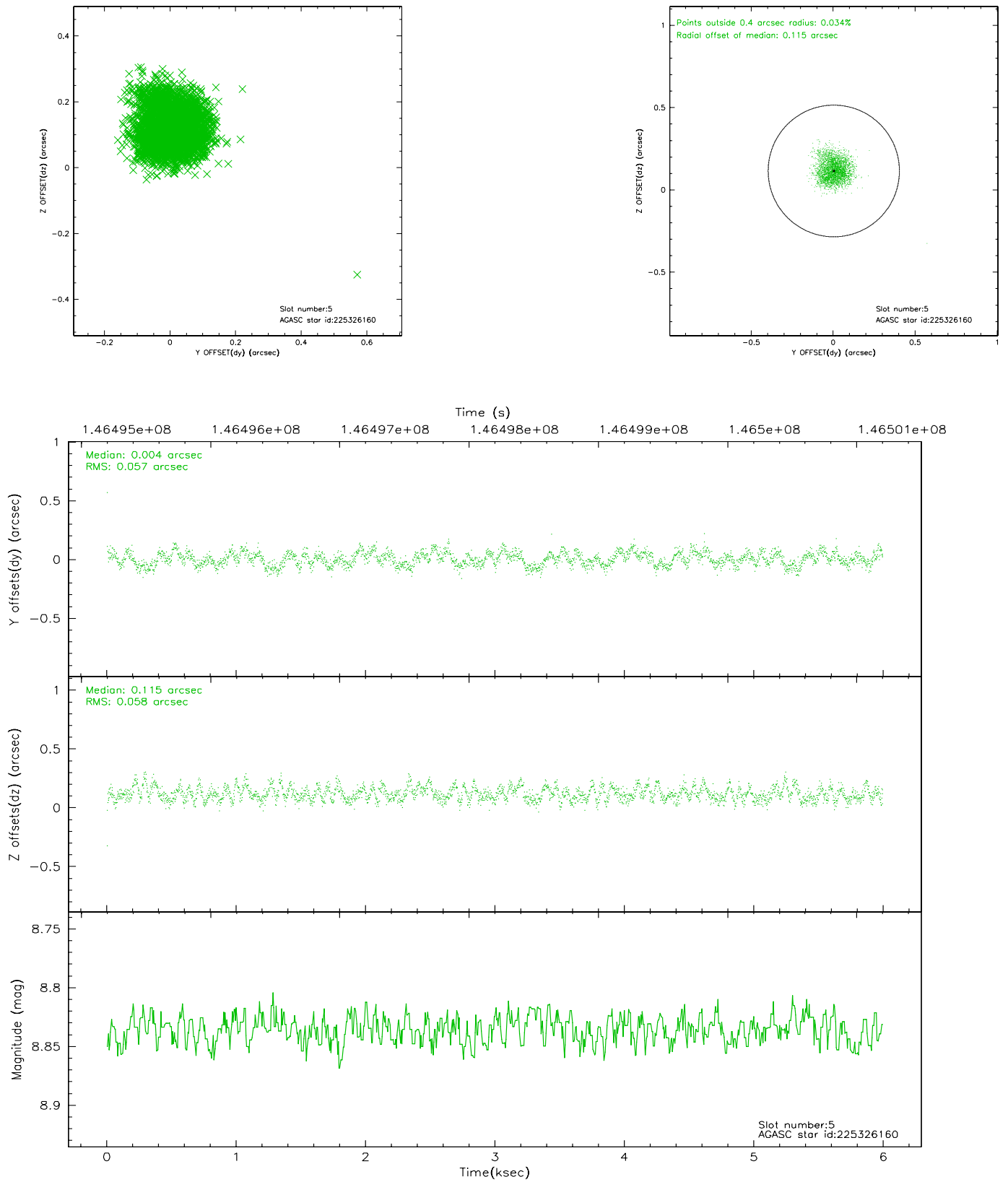
2.4.1 Slot 3



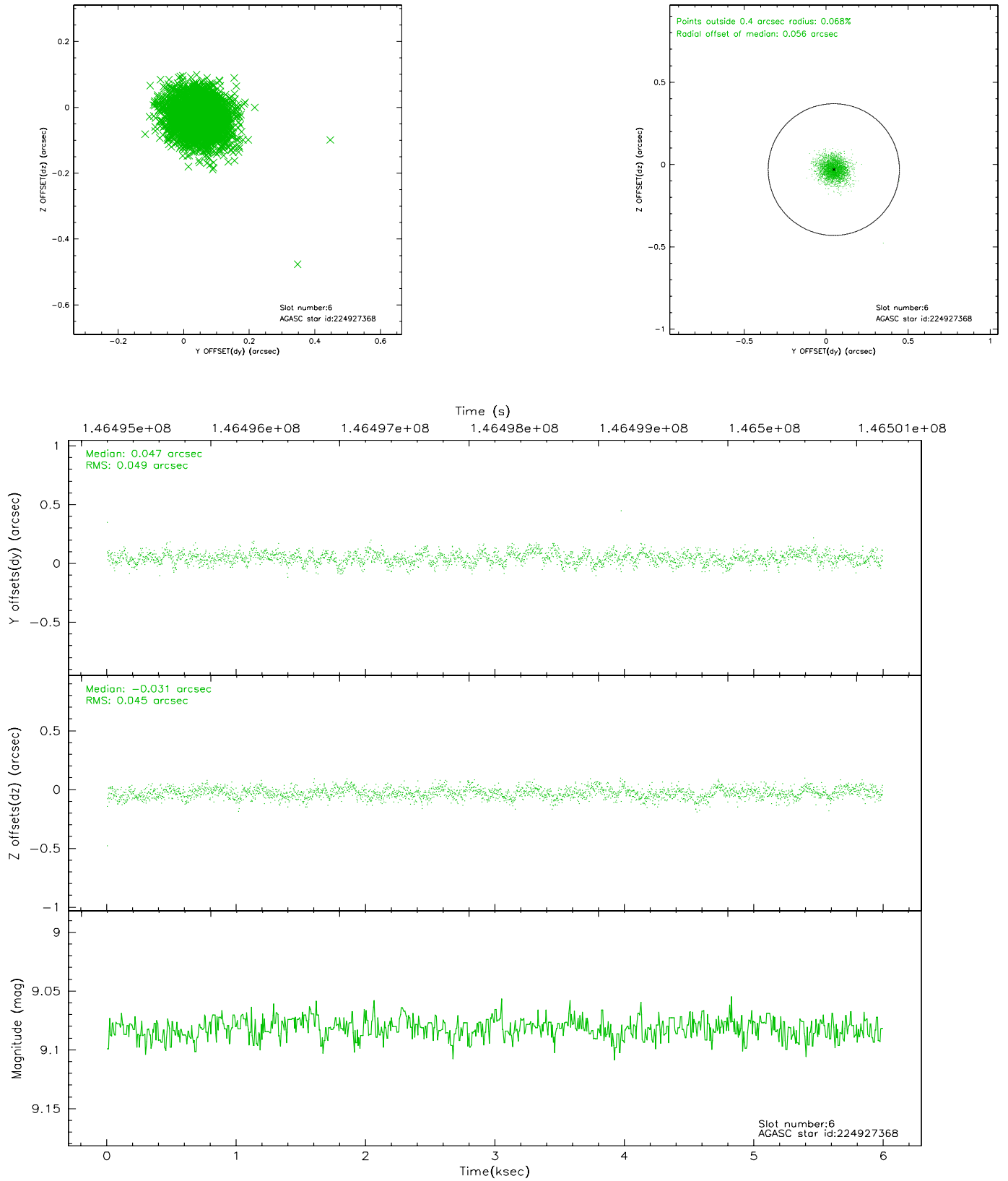
2.4.2 Slot 4



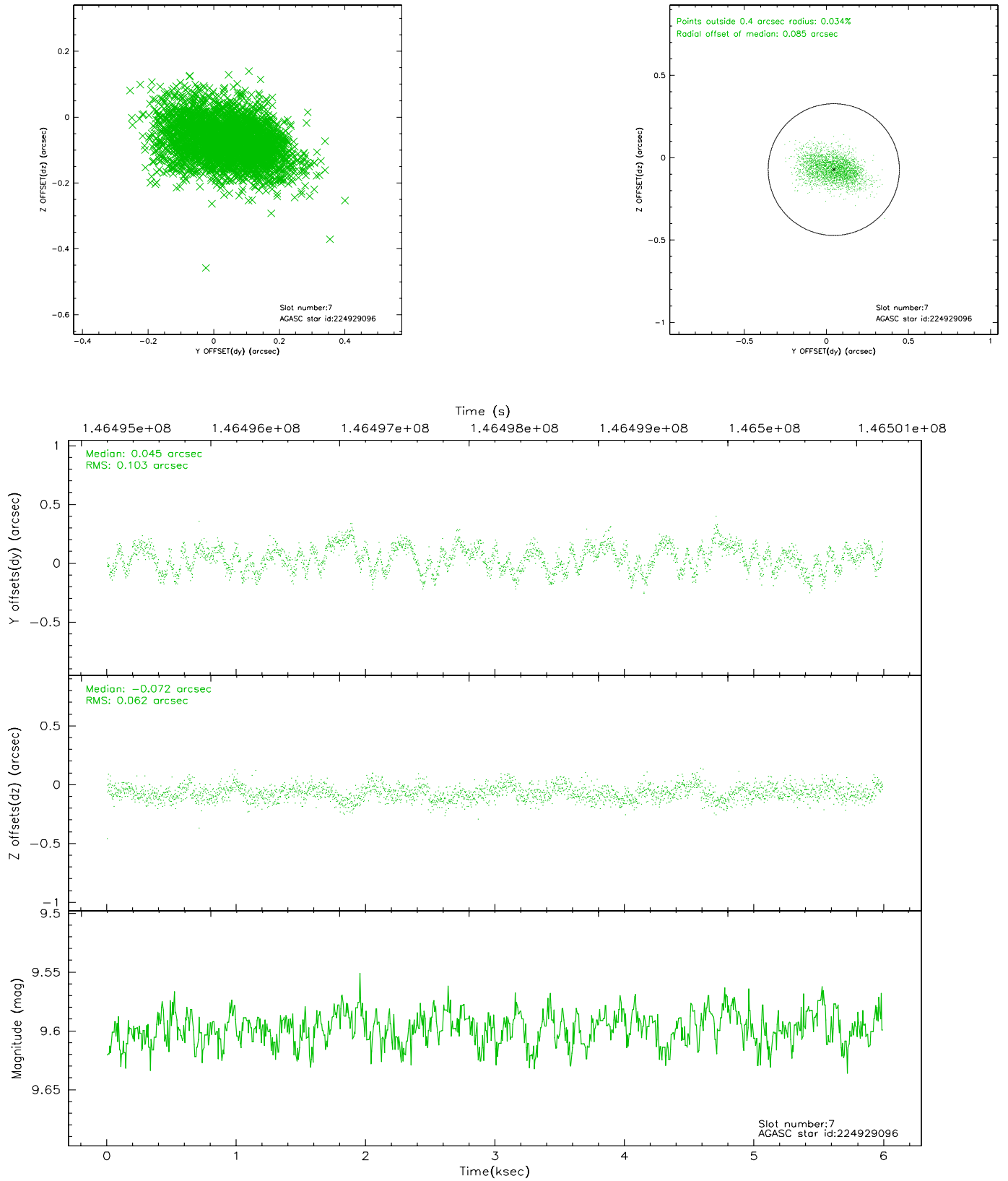
2.4.3 Slot 5



2.4.4 Slot 6

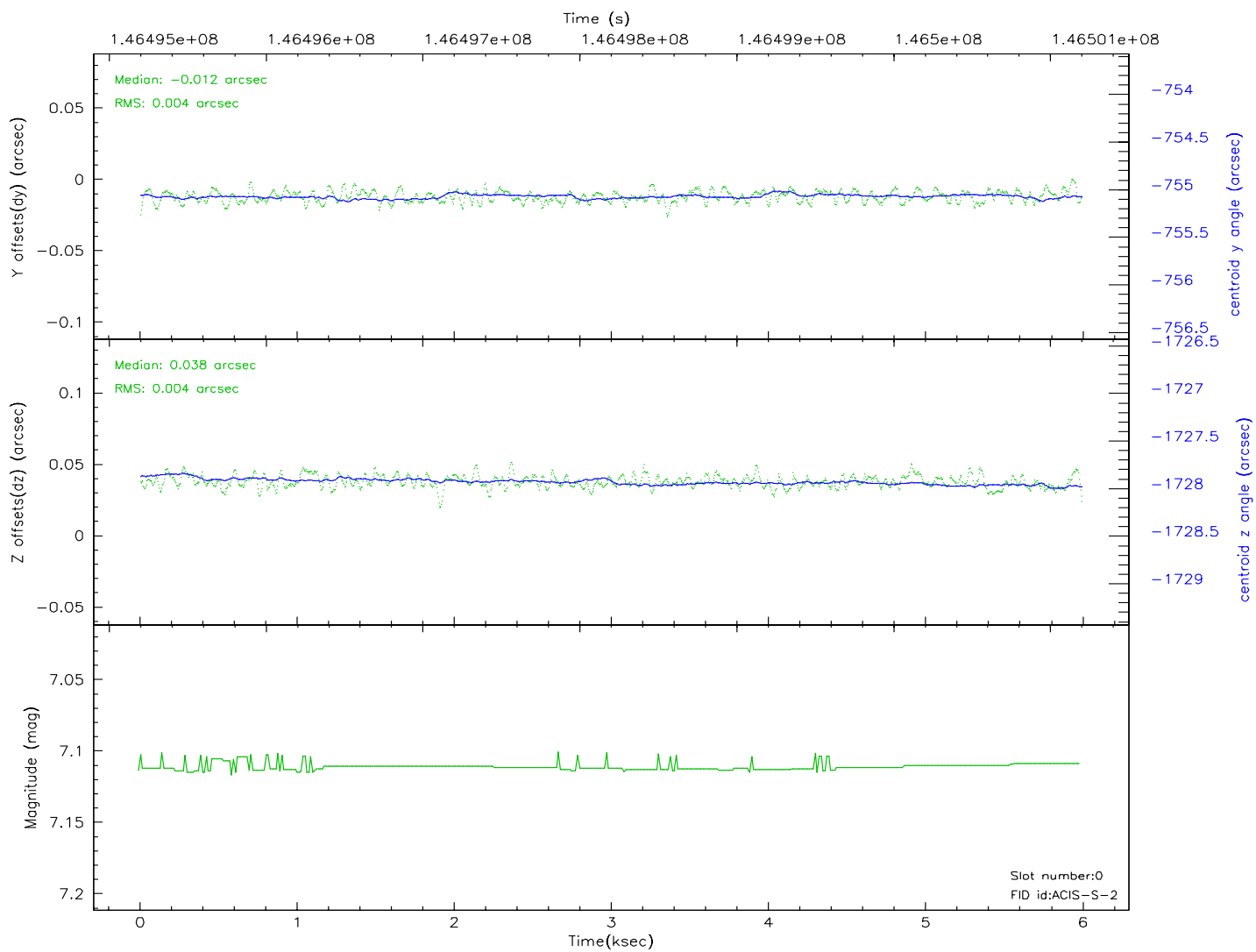
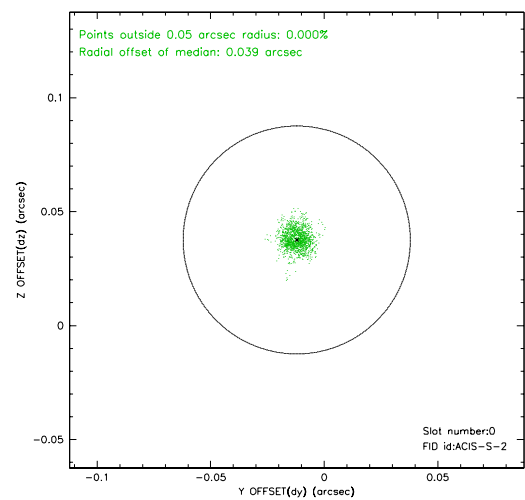
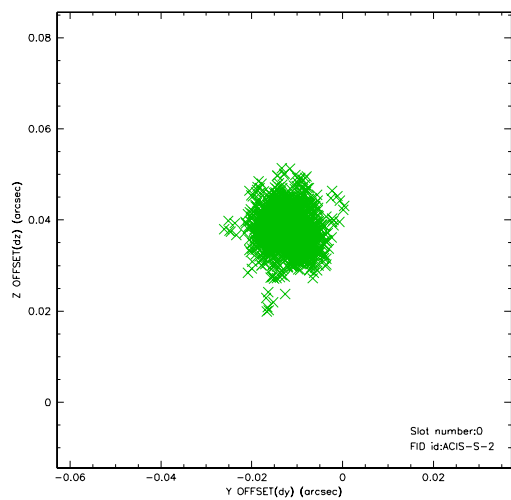


2.4.5 Slot 7

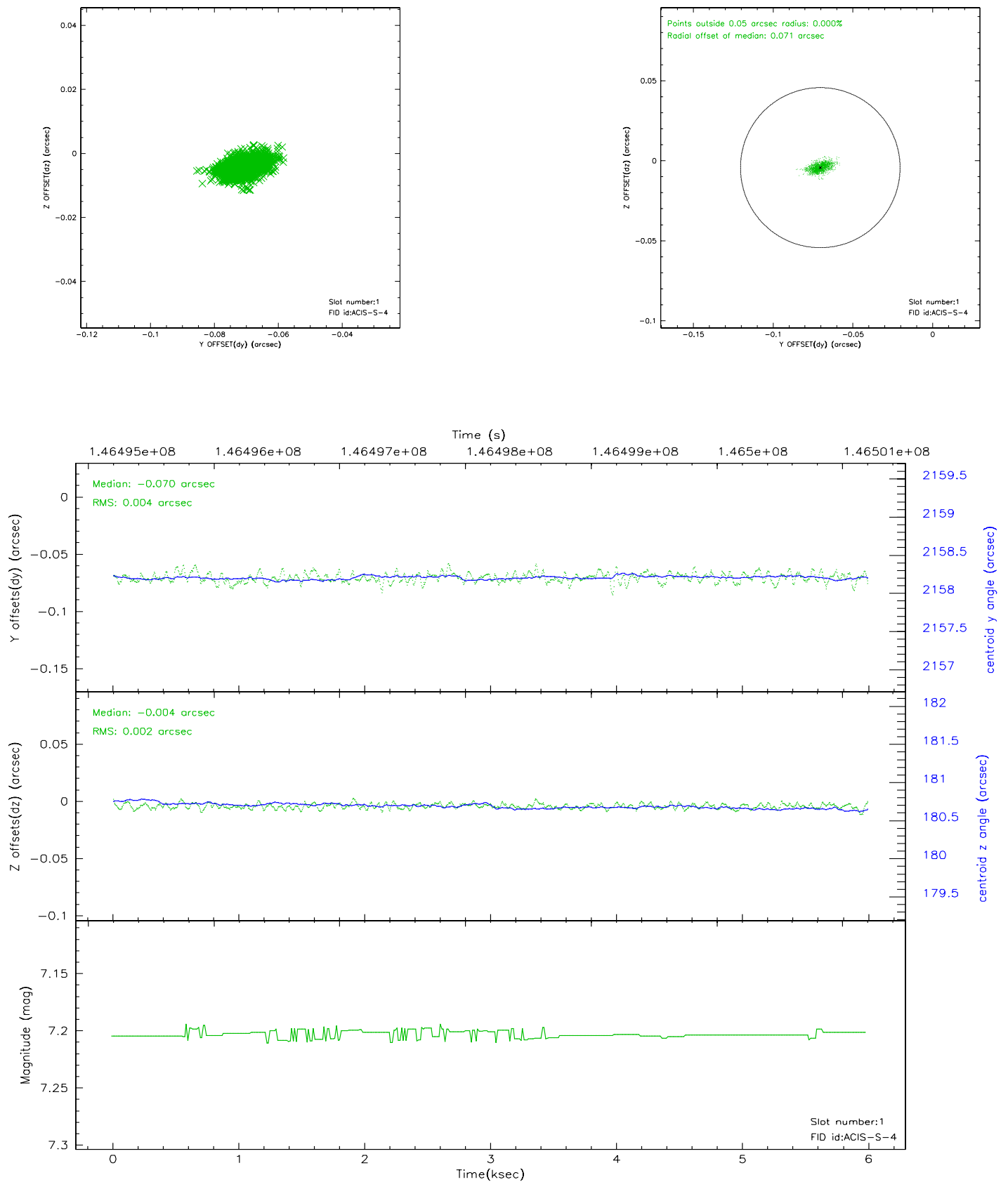


2.5 FID Slots

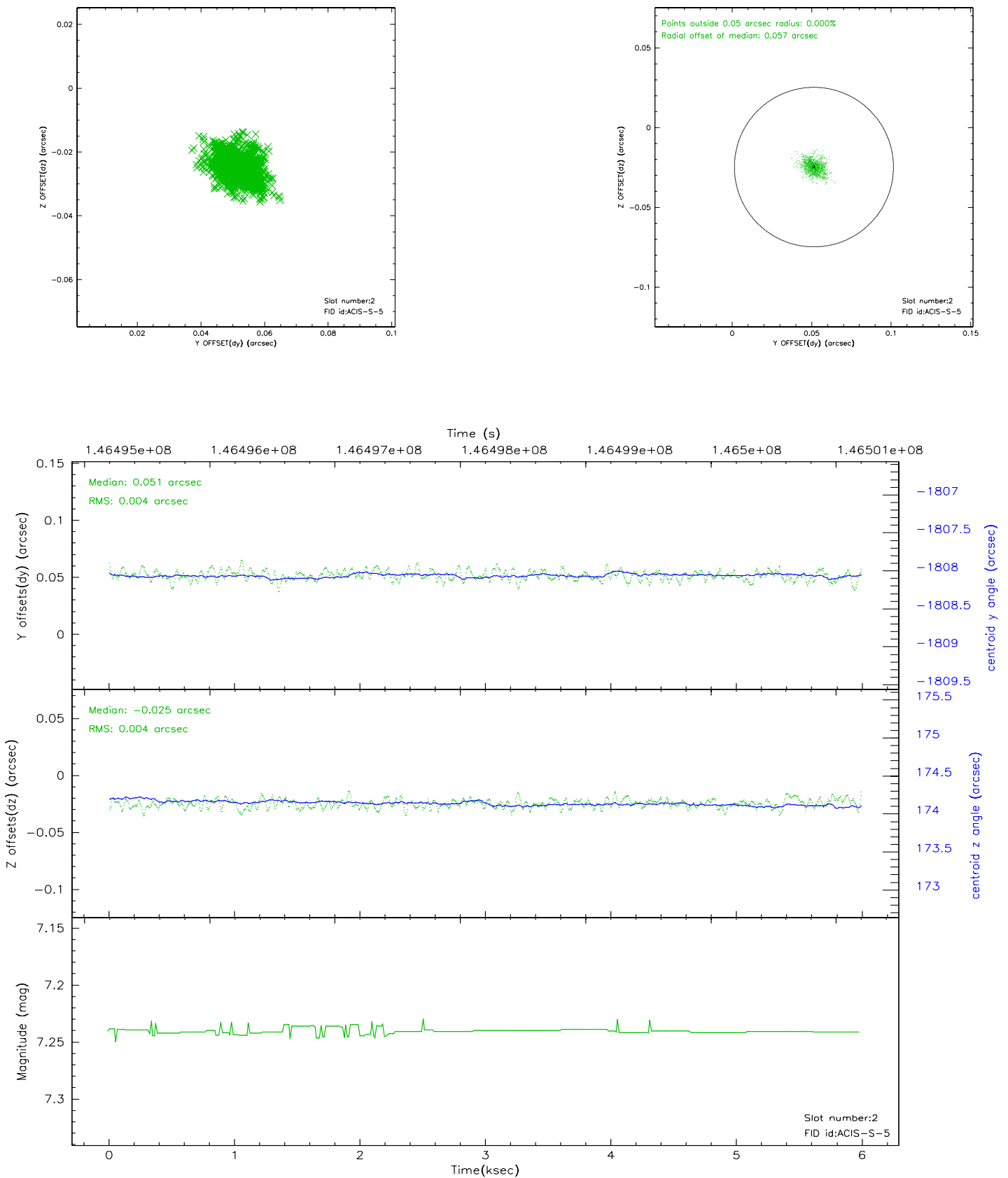
2.5.1 Slot 0



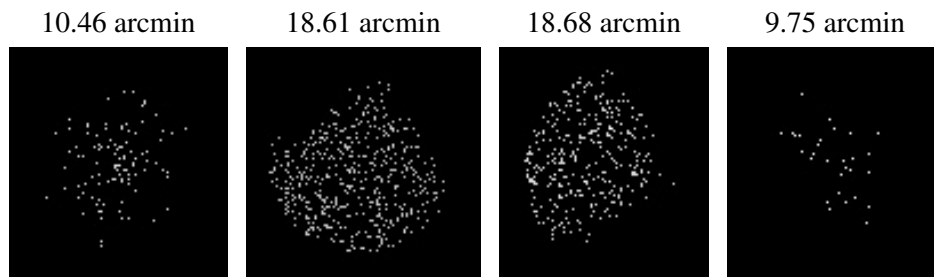
2.5.2 Slot 1



2.5.3 Slot 2



3 Point Sources



A Summary

A.1 Status

V&V Scientist	Beth Sundheim
V&V Date (YYYY-MM-DD)	2006.09.28
V&V Edition	1
V&V Disposition and Status	OK
V&V Charge Time	4.963

A.2 Comments

Focal plane temperature is warmer than -118 degrees during entire observation. The ACIS calibrations are not verified or necessarily applicable for focal plane temperatures warmer than -118 degrees.