

V&V Reference Report

L2 ASCDS Version : 7.6.10

Observation 3018 - L2 Version 001
Chandra X-Ray Center

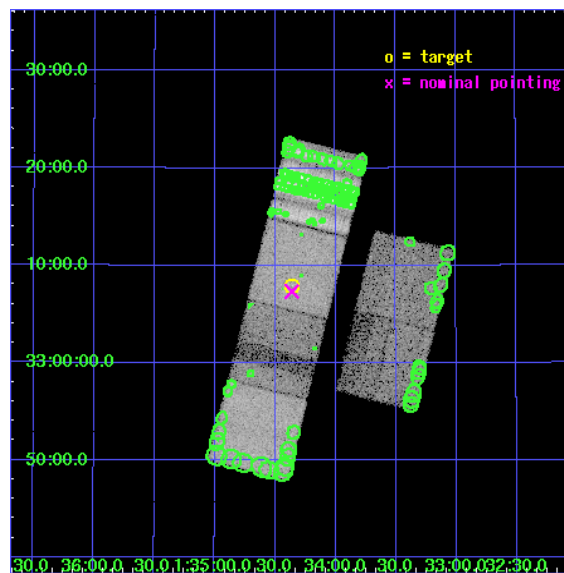
L2 Processing Date : Jan 16 2007

Contents

1	Front	2
2	OBI	3
2.1	OBI	3
2.1.1	Images	3
2.1.2	Bias	3
2.1.3	Parameters	4
2.1.4	Events	4
2.2	Compared Parameters	5
2.3	Aspect	6
2.4	Star Slots	9
2.4.1	Slot 4	9
2.4.2	Slot 6	10
2.4.3	Slot 7	11
2.5	FID Slots	12
2.5.1	Slot 0	12
2.5.2	Slot 1	13
2.5.3	Slot 2	14
3	Point Sources	15
A	Summary	16
A.1	Status	16
A.2	Comments	16

1 Front

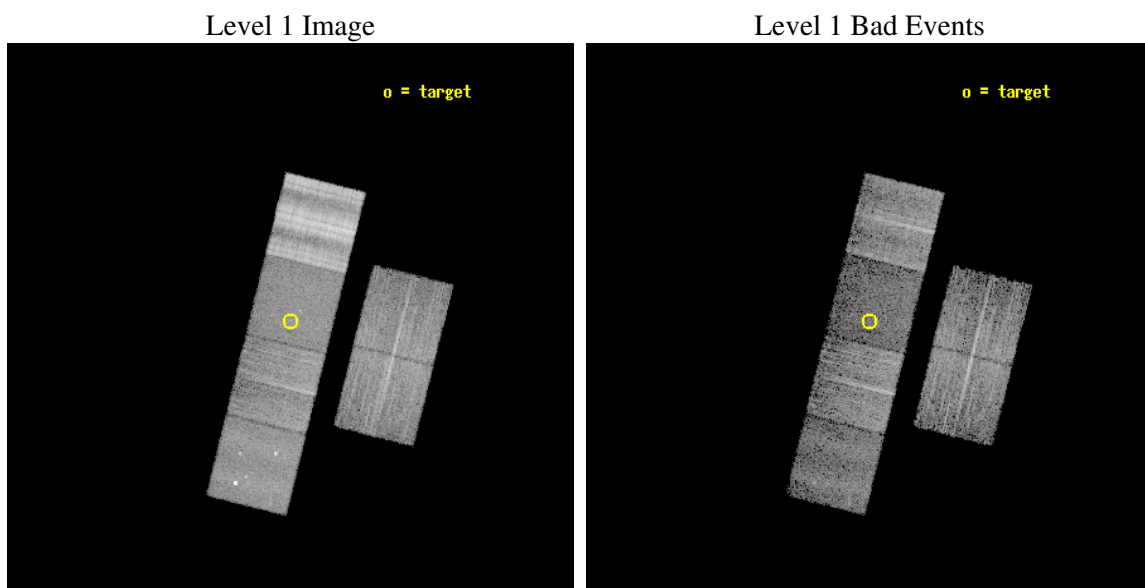
seq_num	700457
obs_id	3018
title	A SYSTEMATIC X-RAY SURVEY OF SUBMILLIMETRE-LUMINOUS QUASARS
observer	Dr Robert Priddey
object	PSS0134+3307
dtcycle	0
cycle	P
ra_targ	23.5895
dec_targ	33.132194
ra_nom	23.59035385884
dec_nom	33.122472988044
roll_nom	283.99794291749
revision	2
ontime	5113.6000047624
livetime	5048.8485224618
ontime2	5113.6000047624
ontime3	5113.6000047624
ontime5	5113.6000047624
ontime6	5113.6000047624
ontime7	5113.6000047624
ontime8	5113.6000047624
l2events	158454



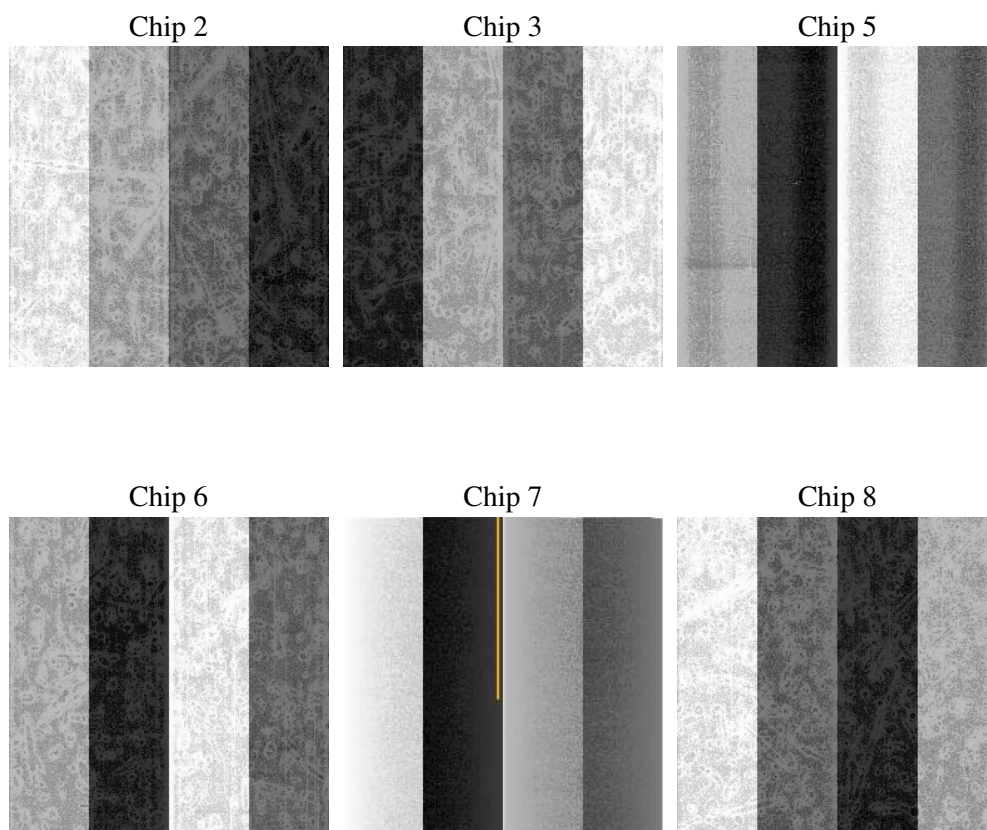
2 OBI

2.1 OBI

2.1.1 Images



2.1.2 Bias



2.1.3 Parameters

obi_num	5
ascdsver	7.6.10
caldbver	3.3.0
date	2007-01-17T02:52:44
revision	2

sched_exp_time	5000.000000
ontime	5113.6000047624
ontime2	5113.6000047624
ontime3	5113.6000047624
ontime5	5113.6000047624
ontime6	5113.6000047624
ontime7	5113.6000047624
ontime8	5113.6000047624
l1events	559614

2.1.4 Events

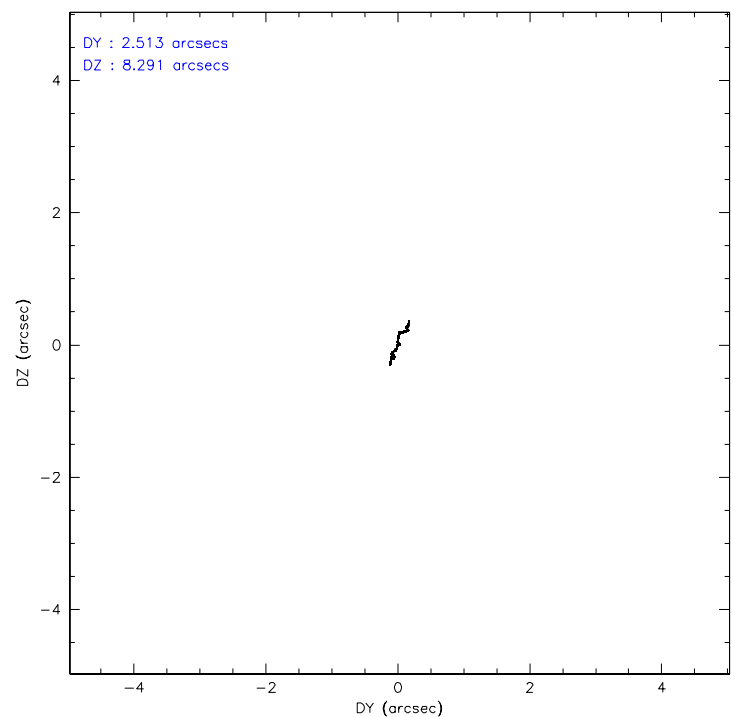
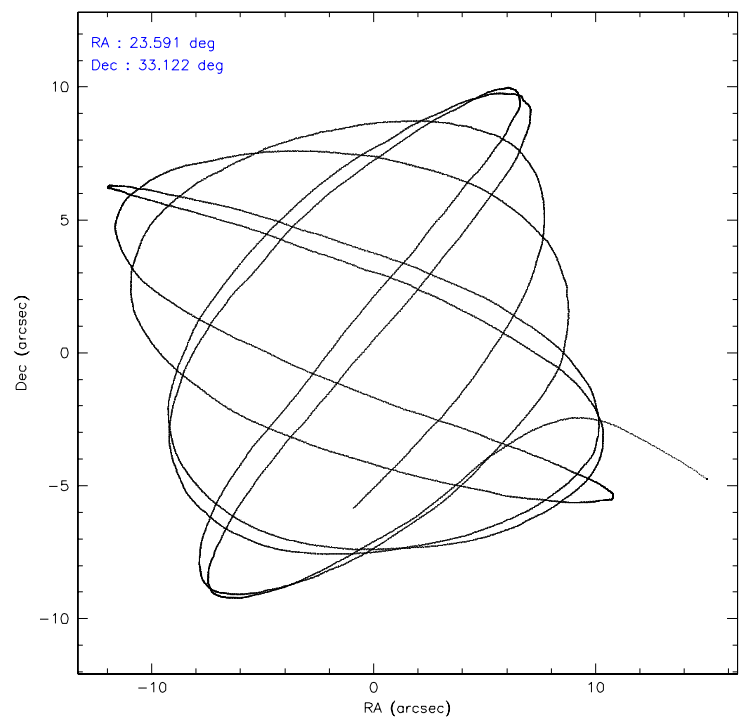
	ccd 2	ccd 3	ccd 5	ccd 6	ccd 7	ccd 8
level 1 events	76049	72318	85522	77875	73249	174601
rejected events	60534	57898	48527	61591	42054	80274
rejected %	79%	80%	56%	79%	57%	45%

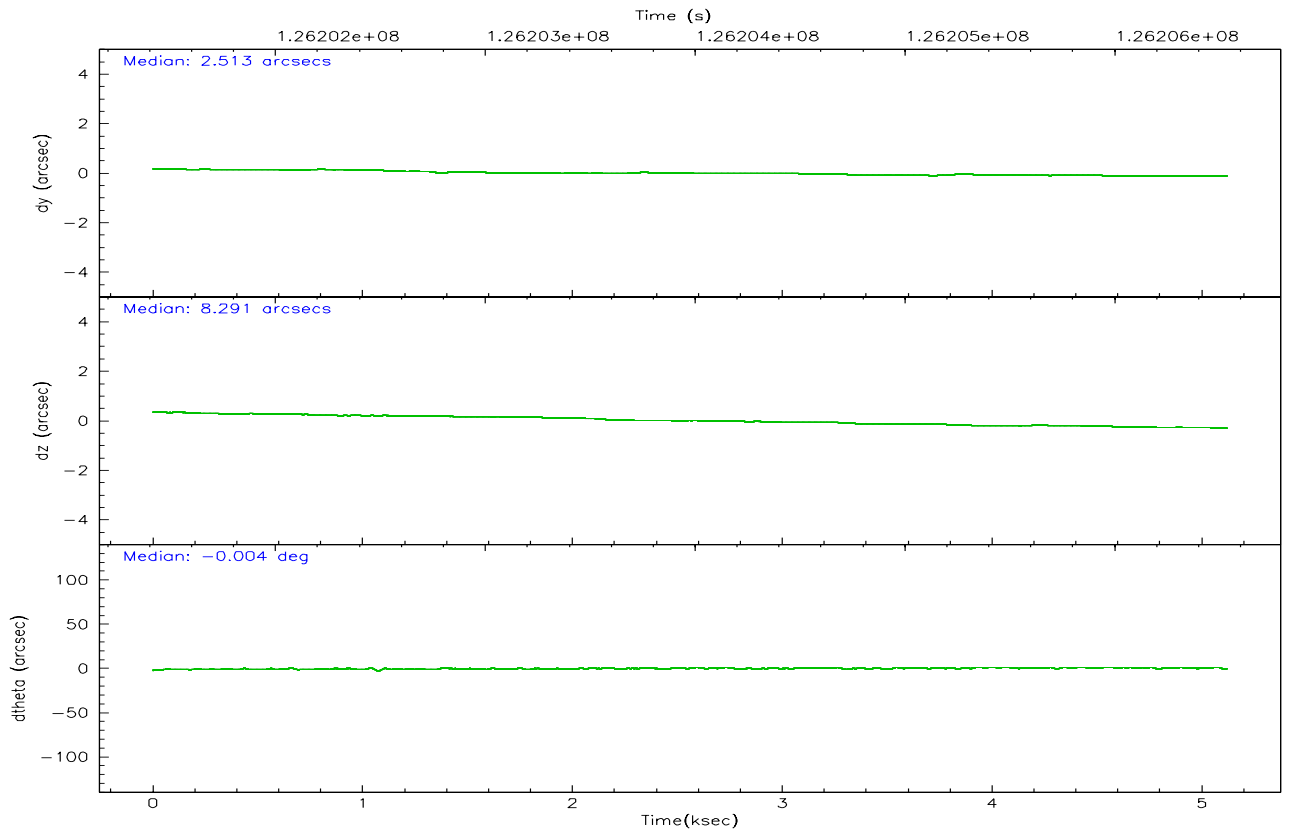
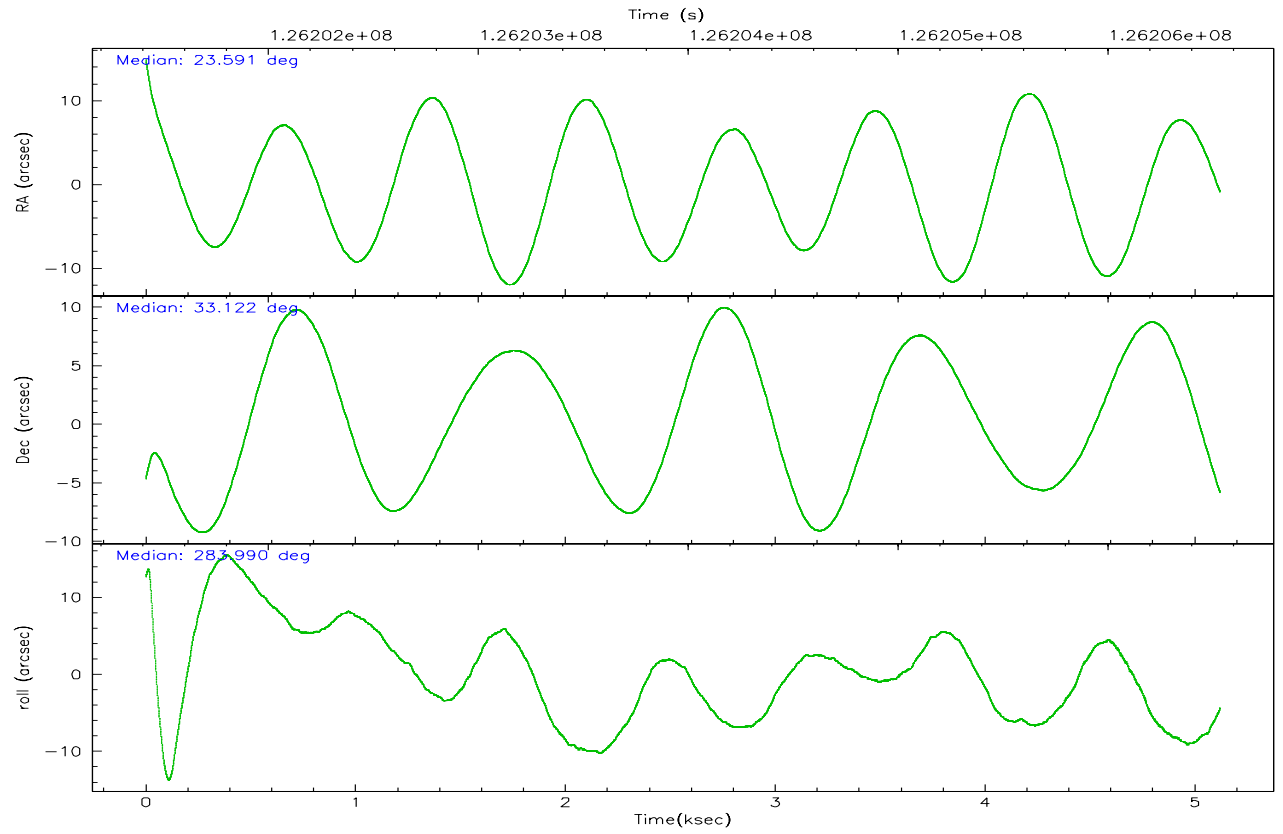
	ccd 2	ccd 3	ccd 5	ccd 6	ccd 7	ccd 8
grade 0 events	8101	6927	6208	8564	3876	36936
	10%	9%	7%	10%	5%	21%
grade 1 events	49	42	200	46	96	257
	0%	0%	0%	0%	0%	0%
grade 2 events	5033	5278	14182	5715	7751	16142
	6%	7%	16%	7%	10%	9%
grade 3 events	566	626	2722	656	3372	17696
	0%	0%	3%	0%	4%	10%
grade 4 events	983	754	2628	751	3139	15674
	1%	1%	3%	0%	4%	8%
grade 5 events	1564	1538	5391	1778	5824	3362
	2%	2%	6%	2%	7%	1%
grade 6 events	3316	3309	20044	3121	20248	21279
	4%	4%	23%	4%	27%	12%
grade 7 events	56437	53844	34147	57244	28943	63255
	74%	74%	39%	73%	39%	36%

2.2 Compared Parameters

Parameter	Planned	Actual	Parameter	Planned	Actual
Instrument	ACIS	ACIS	Obspar format version number	6	6
Detector	ACIS-235678	ACIS-235678	Obspar file type	PREDICTED	ACTUAL
Grating	NONE	NONE	Obspar update status	NONE	UPDATED
Data mode	FAINT	FAINT	Number of optional ACIS chips dropped	0	0
Observation mode	POINTING	POINTING	On-chip summing requested	N	N
Pointing RA	23.567371	23.59035385884047	Subarray requested	NONE	NONE
Pointing Dec	33.141873	33.12247298804443	Alternating exposures requested	N	N
Pointing Roll	283.853786	283.9979429174875	Primary exposure time	0.000000	3.2
SIM focus pos (mm)	-0.684267	-0.6828225247311905			
SIM defocus (mm)	0	0.001444936568705701			
SIM translation stage pos (mm)	-190.132523	-190.1400660498719			
SIM translation stage offset (mm)	0	0.00754346686406393			
Observation start time	126201538.184000	126199741.88561			
Observation start date	2001-12-31T15:57:54	2001-12-31T15:29:01			
Observation end time	126206538.184000	126207641.56092			
Observation end date	2001-12-31T17:21:14	2001-12-31T17:40:41			
Read mode	TIMED	TIMED			

2.3 Aspect



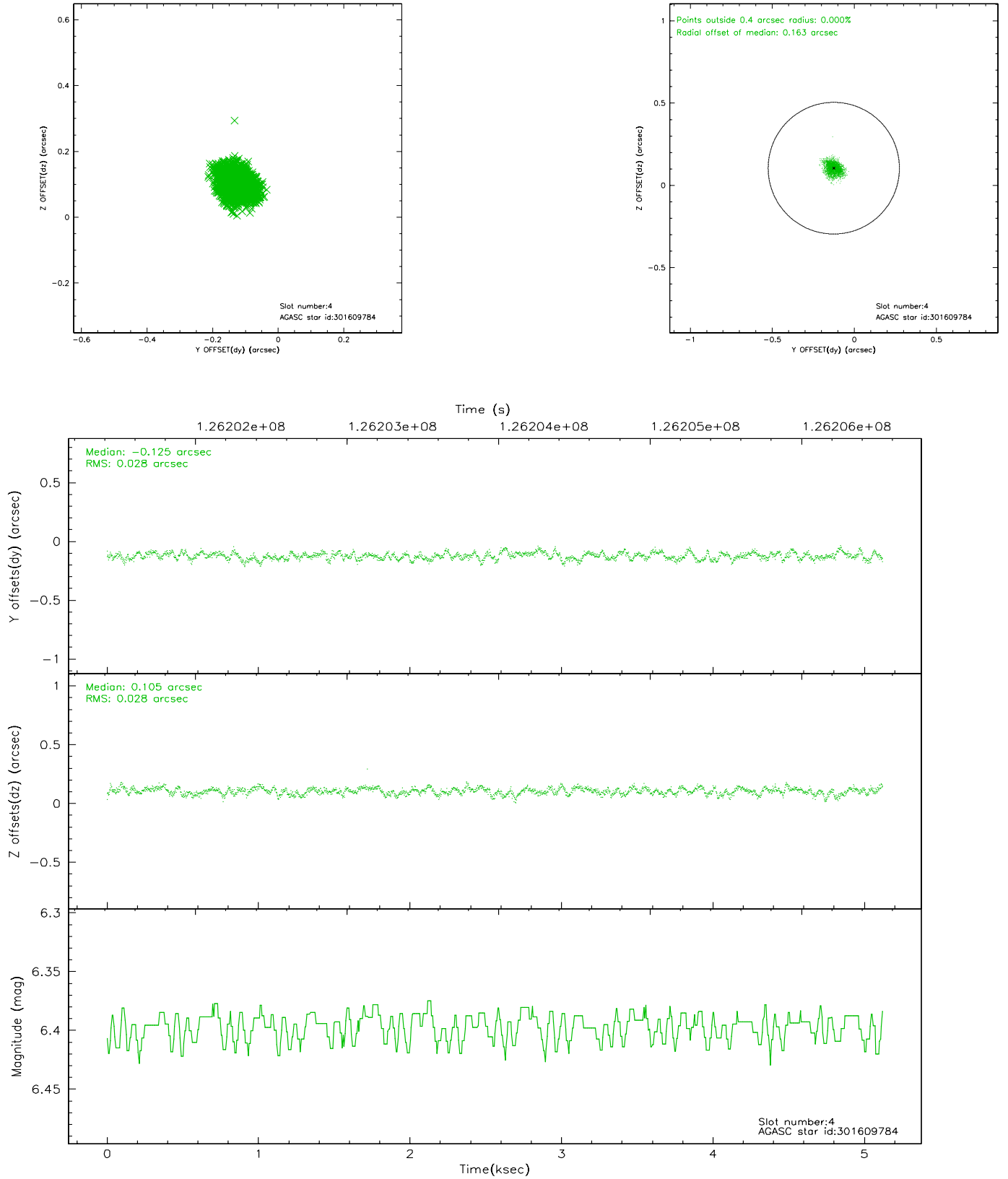


Slot Statistics

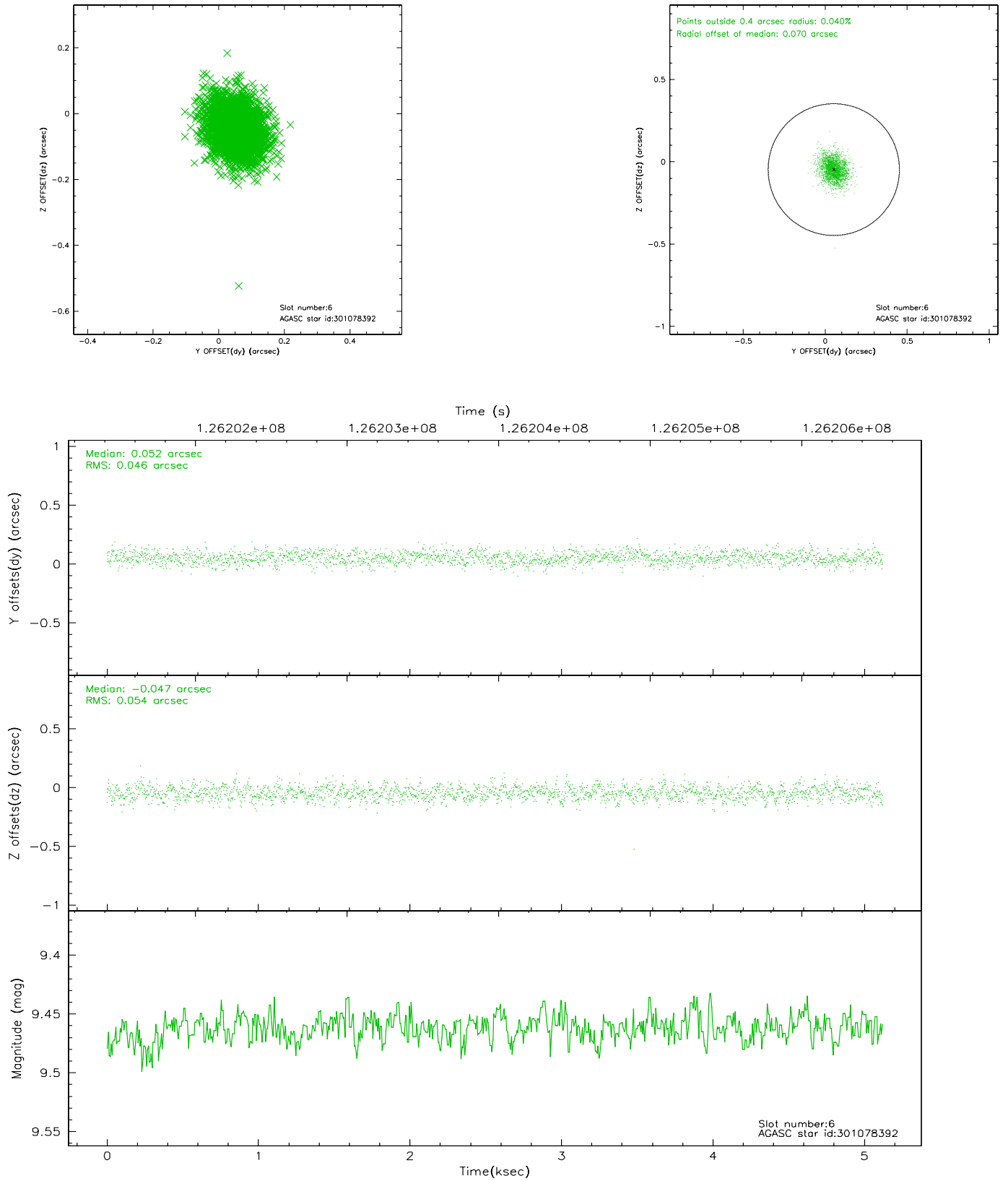
slot	status	id	mag	n_pts	med_dy	med_dz	dr1	dr2	ra	dec	mean_y	mean_z
0	FID	ACIS-S-2	7.11	1250	-0.011	0.005	0.007	0.011	0.000000	0.000000	-755.16	-1729.50
1	FID	ACIS-S-4	7.20	1248	-0.067	0.004	0.006	0.010	0.000000	0.000000	2157.53	177.75
2	FID	ACIS-S-5	7.23	1249	0.047	-0.000	0.006	0.012	0.000000	0.000000	-1806.41	172.77
3	UNUSED		0.00	0	0.000	0.000	0.000	0.000	0.000000	0.000000	0.00	0.00
4	GUIDE	301609784	6.40	2499	-0.125	0.105	0.042	0.069	23.960186	33.835327	-2145.24	1737.61
5	UNUSED		0.00	0	0.000	0.000	0.000	0.000	0.000000	0.000000	0.00	0.00
6	GUIDE	301078392	9.46	2496	0.052	-0.047	0.075	0.122	23.091712	32.835736	721.41	-1660.22
7	GUIDE	301078672	6.85	2498	0.071	-0.058	0.042	0.067	23.742068	33.117864	209.78	489.09

2.4 Star Slots

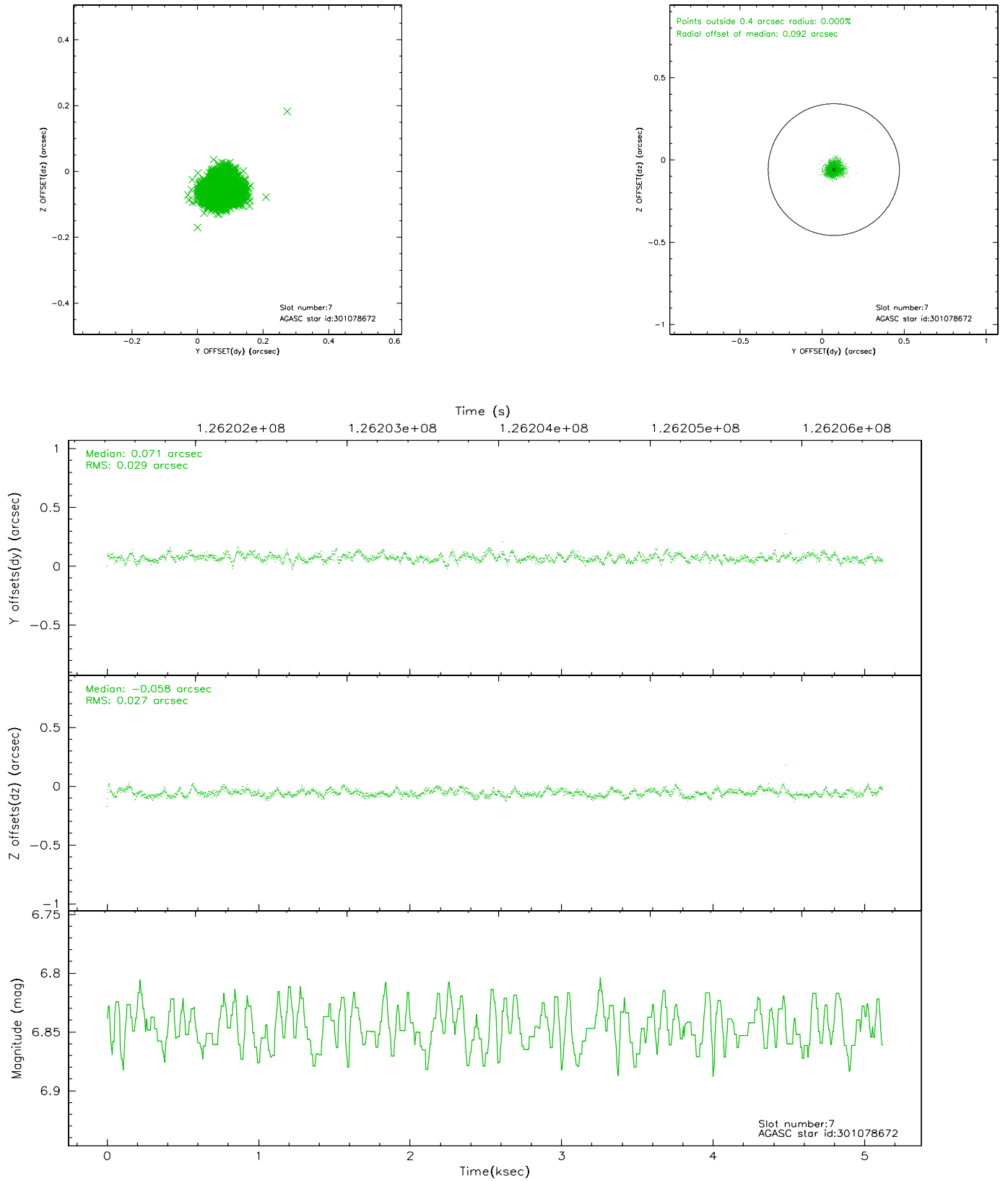
2.4.1 Slot 4



2.4.2 Slot 6

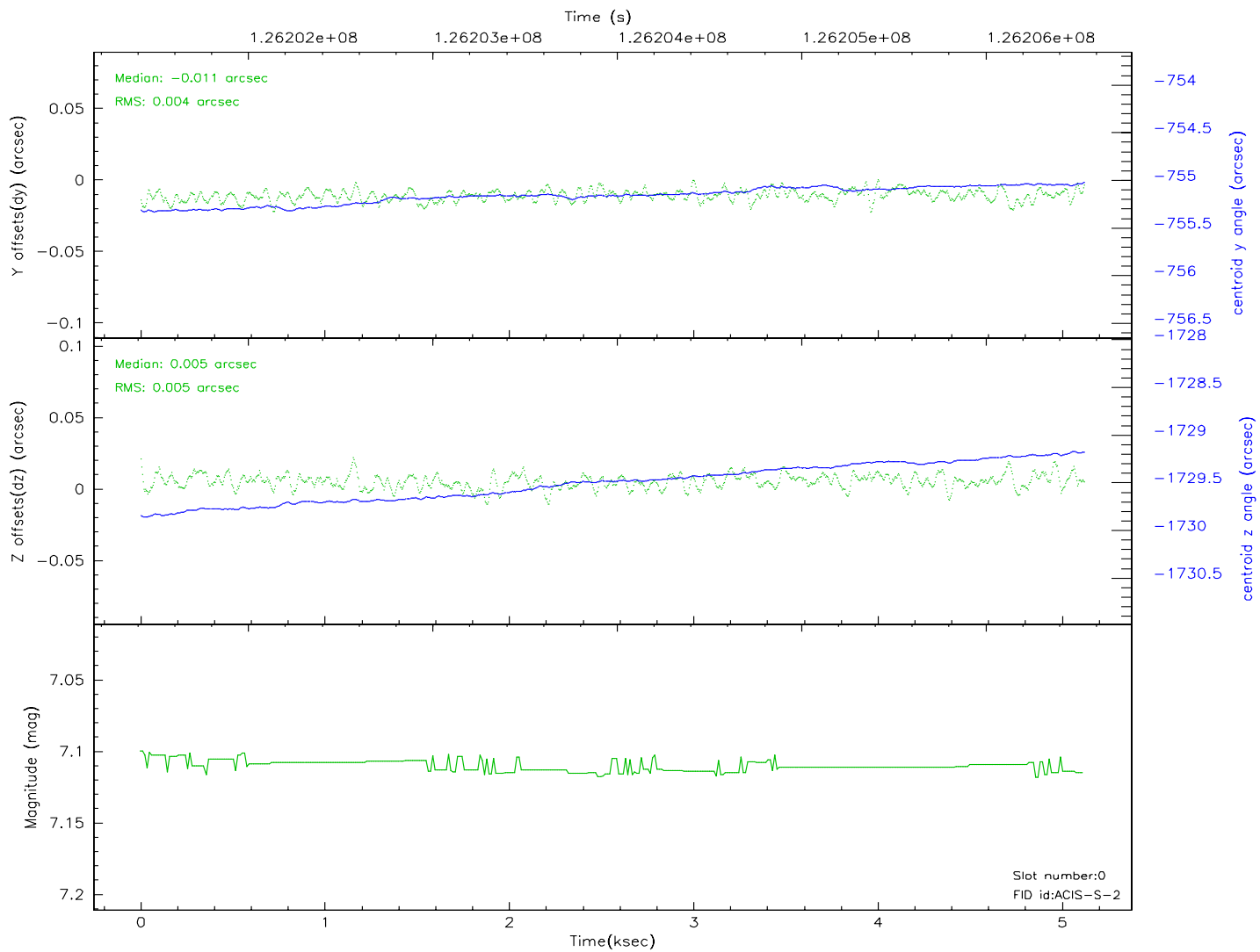
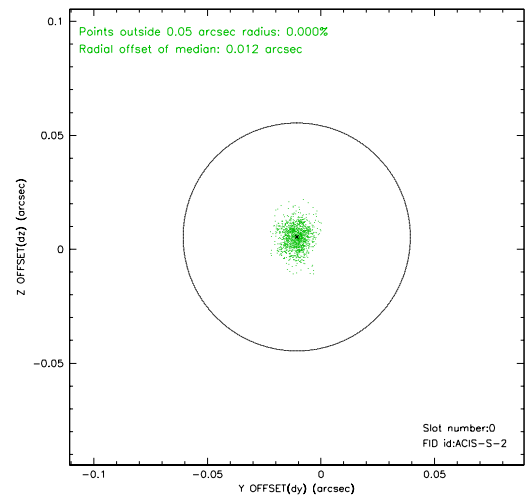
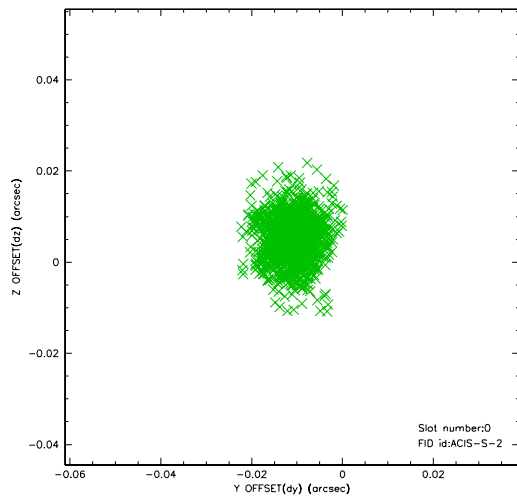


2.4.3 Slot 7

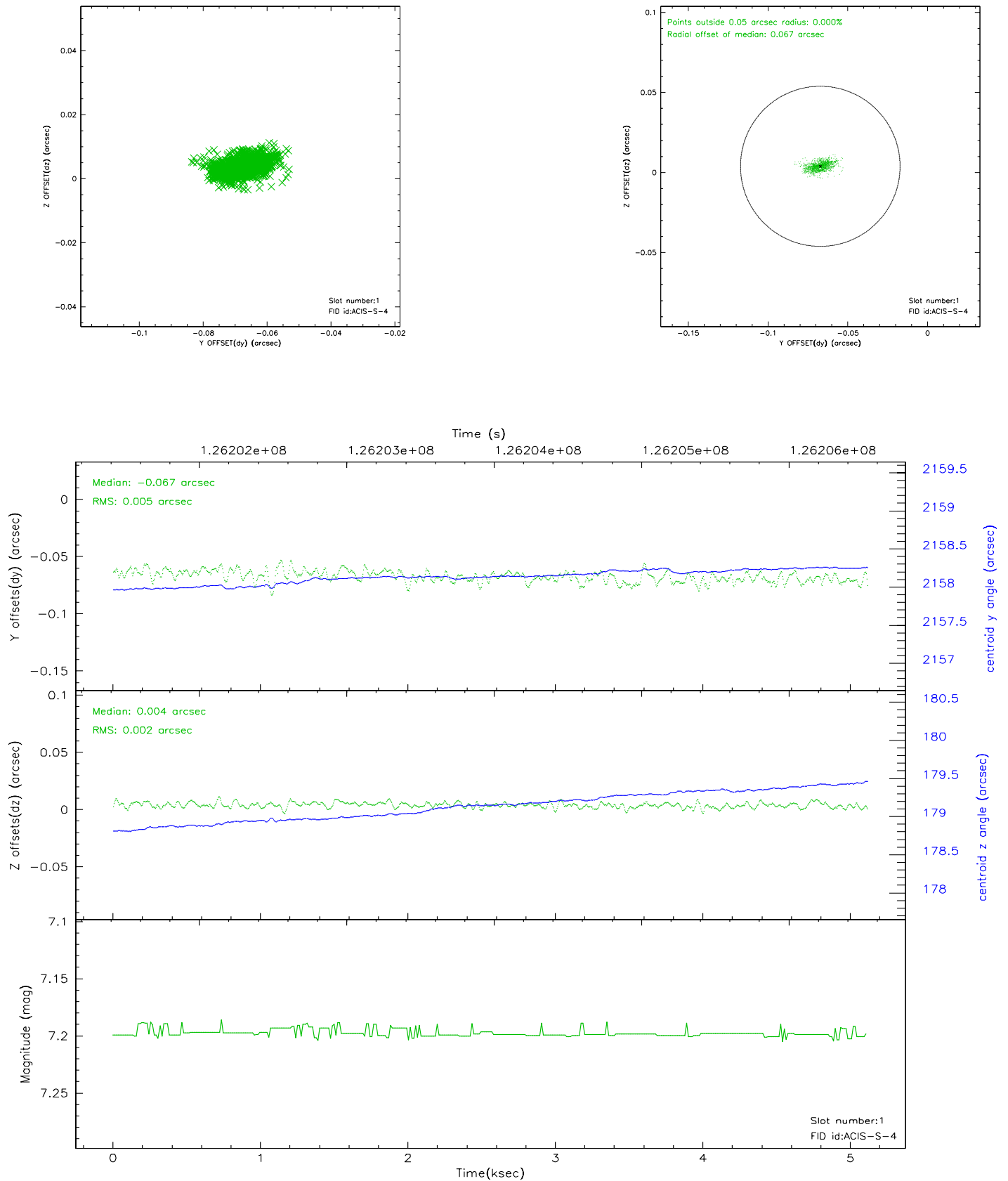


2.5 FID Slots

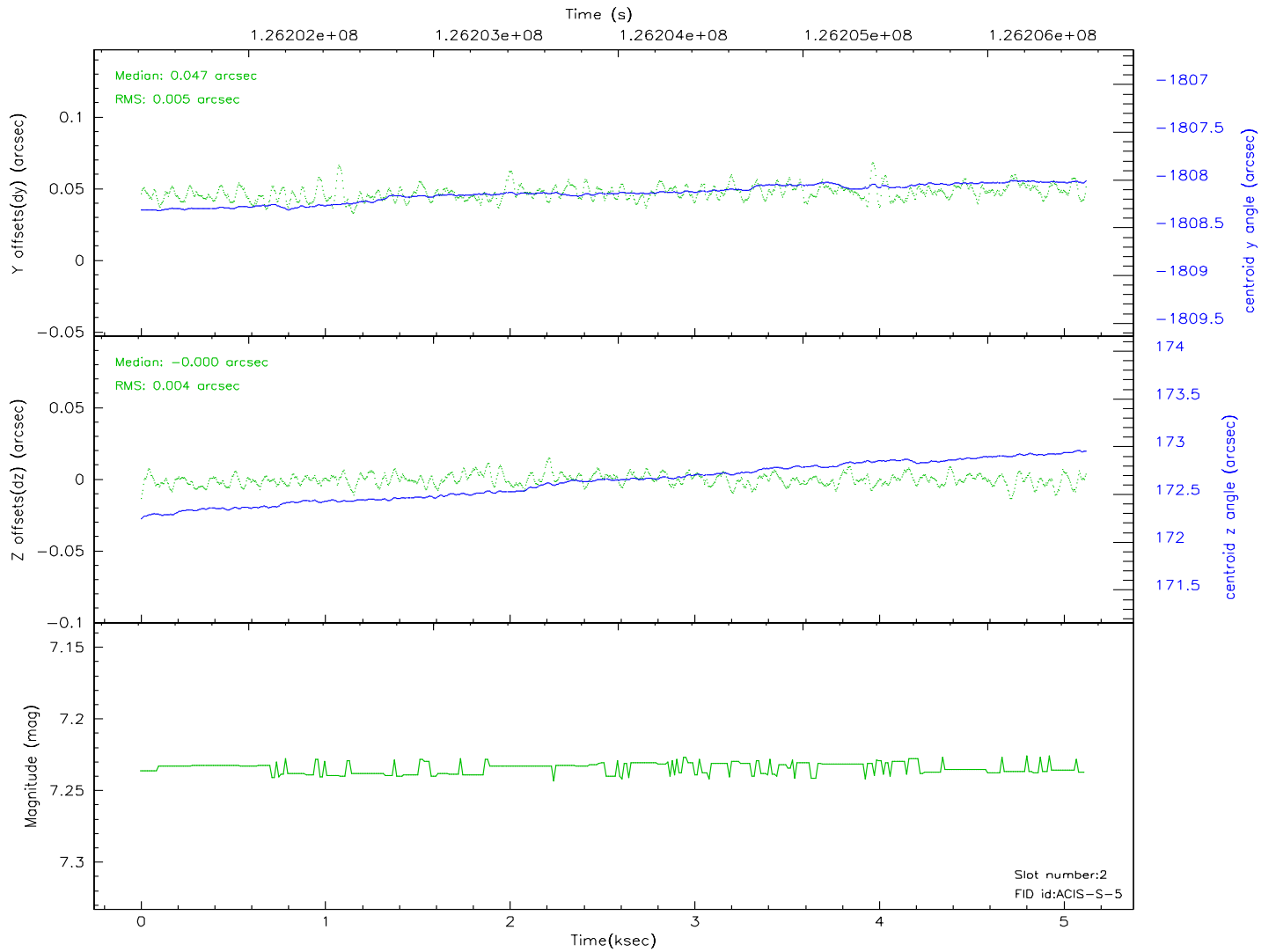
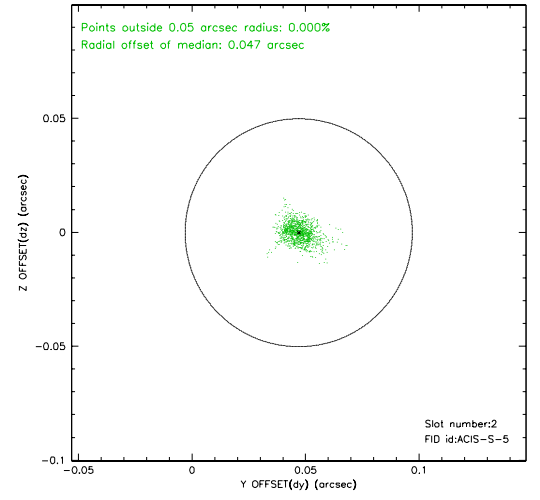
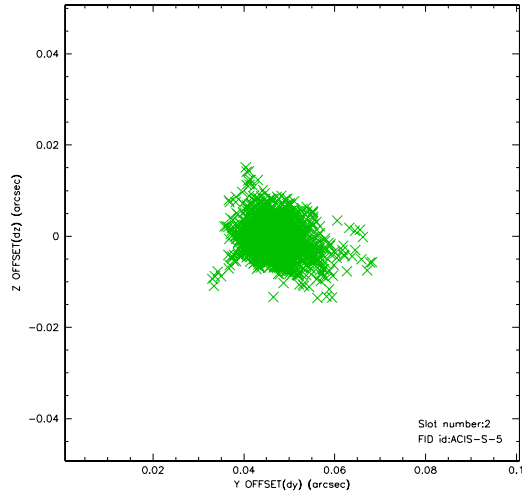
2.5.1 Slot 0



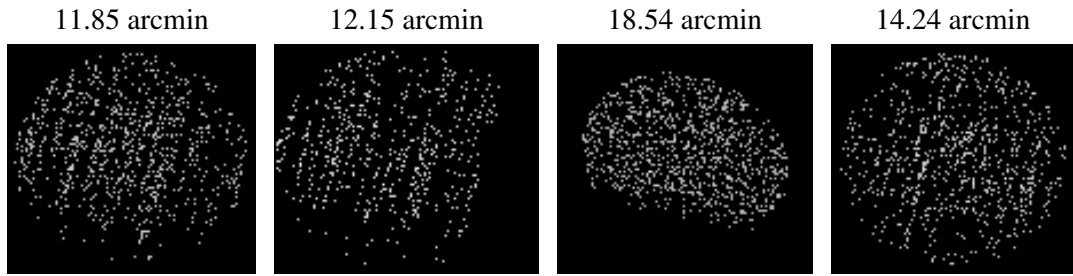
2.5.2 Slot 1



2.5.3 Slot 2



3 Point Sources



A Summary

A.1 Status

V&V Scientist	Jen Lauer
V&V Date (YYYY-MM-DD)	2007.01.17
V&V Edition	1
V&V Disposition and Status	OK
V&V Charge Time	5.113

A.2 Comments

Only three guide stars were used for this observation. The aspect solution is not expected to be degraded by the absence of two stars from the solution.