

V&V Reference Report

L2 ASCDS Version : 7.6.8.1

Observation 2918 - L2 Version 001
Chandra X-Ray Center

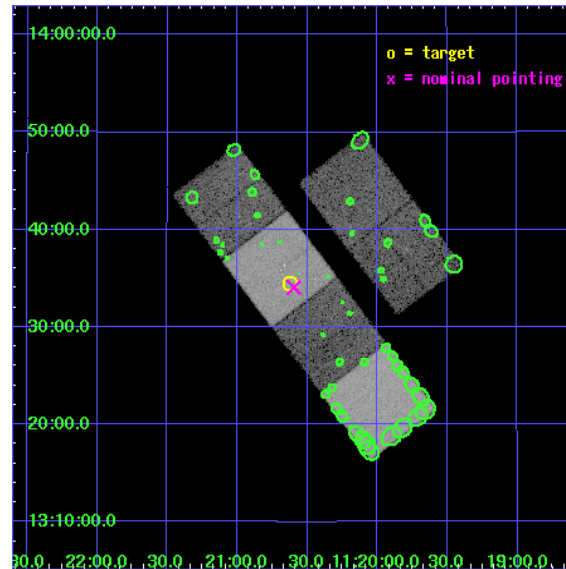
L2 Processing Date : Sep 9 2006

Contents

1	Front	2
2	OBI	3
2.1	OBI	3
2.1.1	Images	3
2.1.2	Bias	3
2.1.3	Parameters	4
2.1.4	Events	4
2.2	Compared Parameters	5
2.3	Aspect	6
2.4	Star Slots	9
2.4.1	Slot 3	9
2.4.2	Slot 4	10
2.4.3	Slot 5	11
2.4.4	Slot 6	12
2.4.5	Slot 7	13
2.5	FID Slots	14
2.5.1	Slot 0	14
2.5.2	Slot 1	15
2.5.3	Slot 2	16
3	Point Sources	17
A	Summary	18
A.1	Status	18
A.2	Comments	18

1 Front

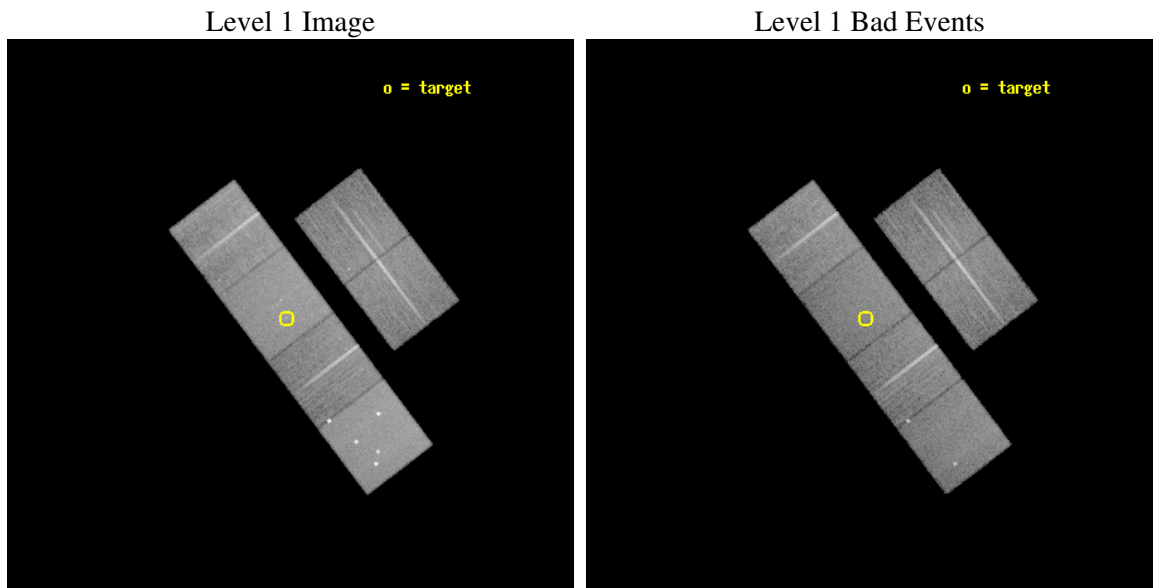
seq_num	600255
obs_id	2918
title	FURTHER PROBING THE NATURE OF SUPER-LUMINOUS X-RAY SOURCES IN NEARBY GALAXIES
observer	Dr Timothy Roberts
object	NGC 3628 X-2
dtcycle	0
cycle	P
ra_targ	170.15625
dec_targ	13.574444
ra_nom	170.14889031349
dec_nom	13.567854150964
roll_nom	232.74290405017
revision	2
ontime	22252.799917102
livetime	21971.021565524
ontime2	22252.799917102
ontime3	22252.799917102
ontime5	22252.799917102
ontime6	22252.799917102
ontime7	22252.799917102
ontime8	22249.559046417
l2events	212137



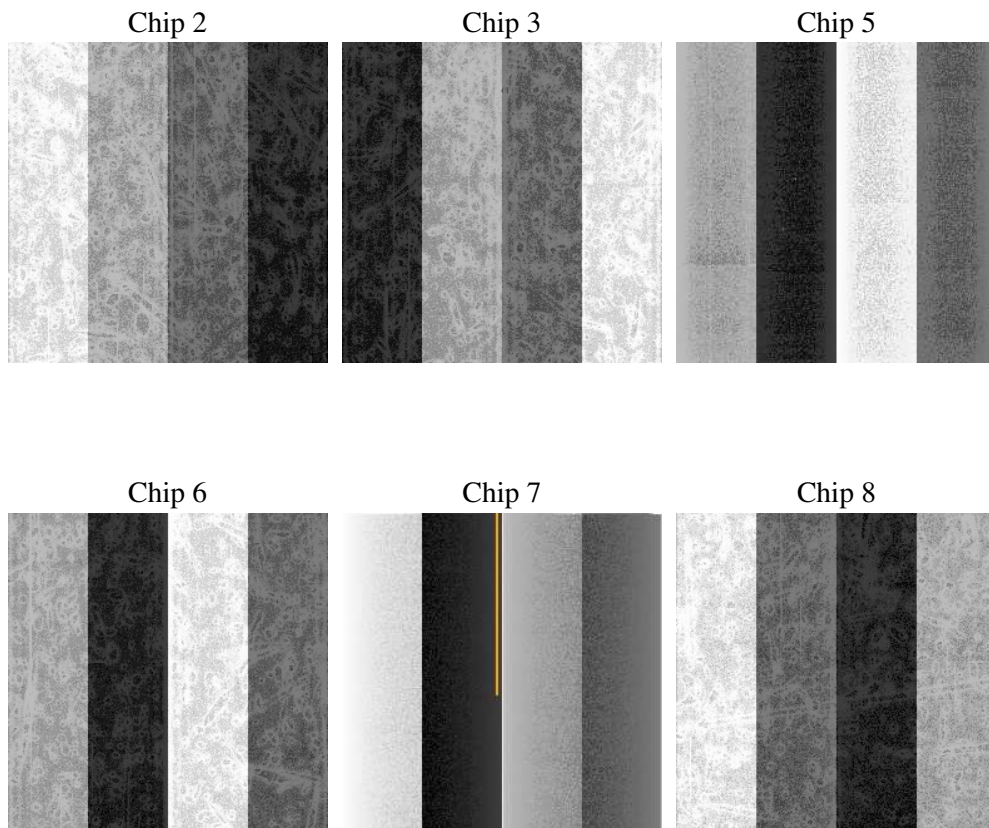
2 OBI

2.1 OBI

2.1.1 Images



2.1.2 Bias



2.1.3 Parameters

obi_num	3
ascdsver	7.6.8.1
caldsver	3.2.3
date	2006-09-09T15:24:03
revision	2

sched_exp_time	22500.000000
ontime	22259.237763524
ontime2	22259.237763524
ontime3	22259.237763524
ontime5	22259.237763524
ontime6	22259.237763524
ontime7	22259.237763524
ontime8	22255.996813178
l1events	1017482

2.1.4 Events

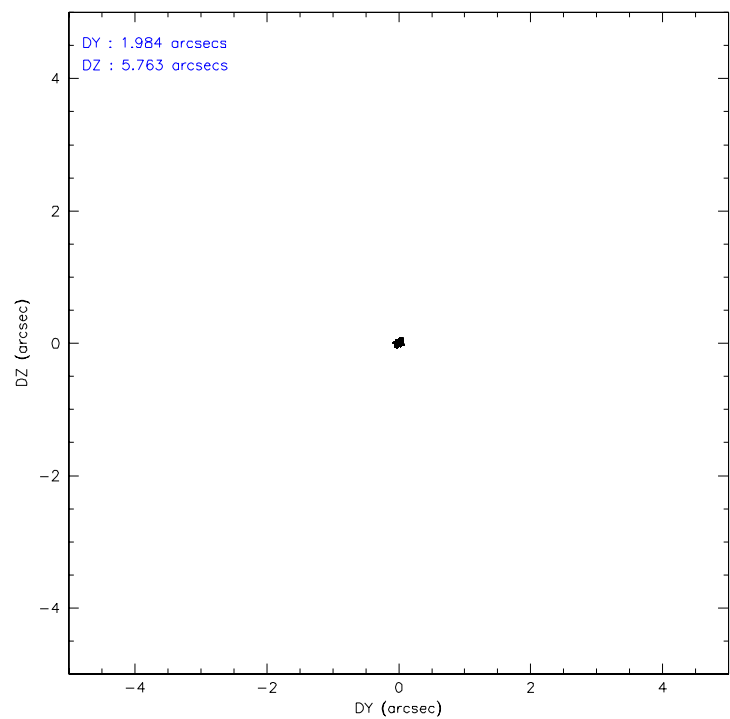
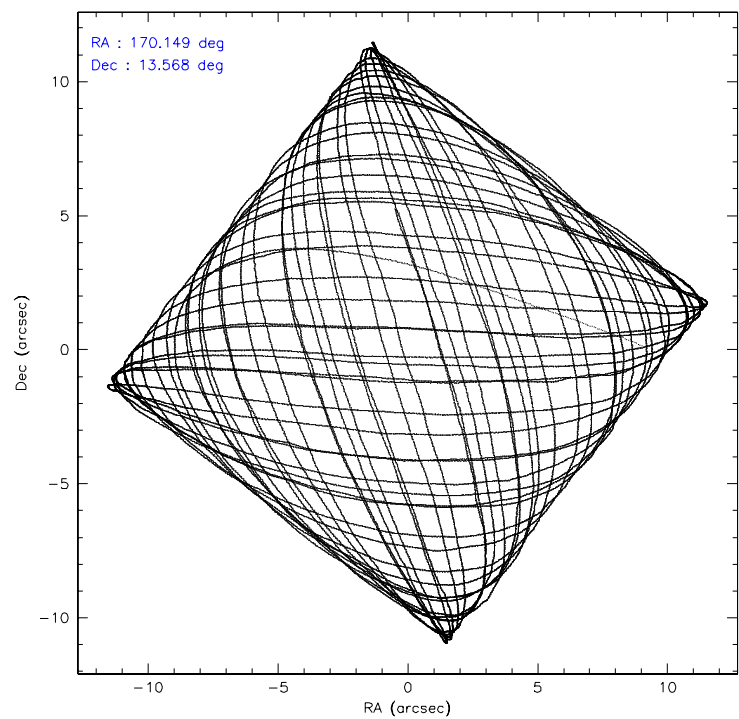
	ccd 2	ccd 3	ccd 5	ccd 6	ccd 7	ccd 8
level 1 events	147759	141699	212515	143428	187259	184822
rejected events	131401	125306	115824	126759	116054	147693
rejected %	88%	88%	54%	88%	61%	79%

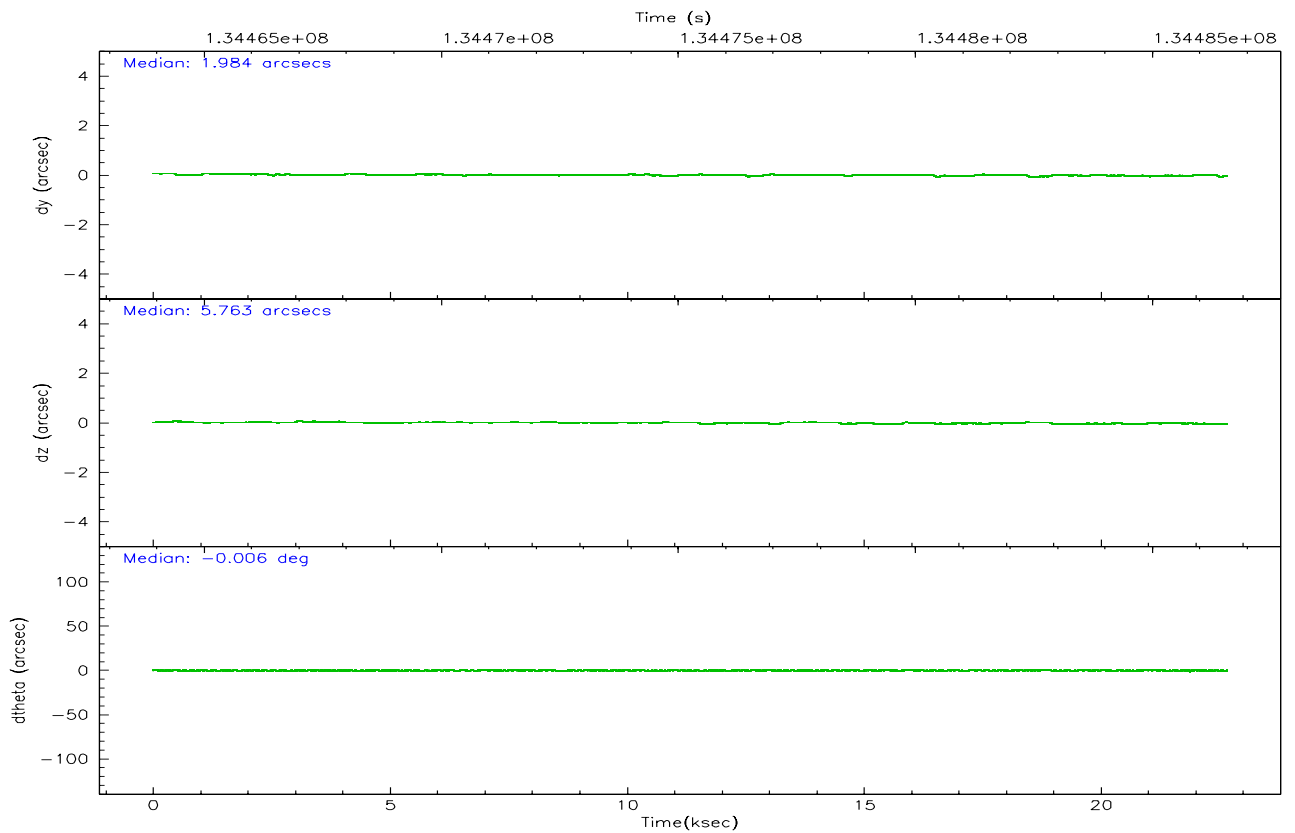
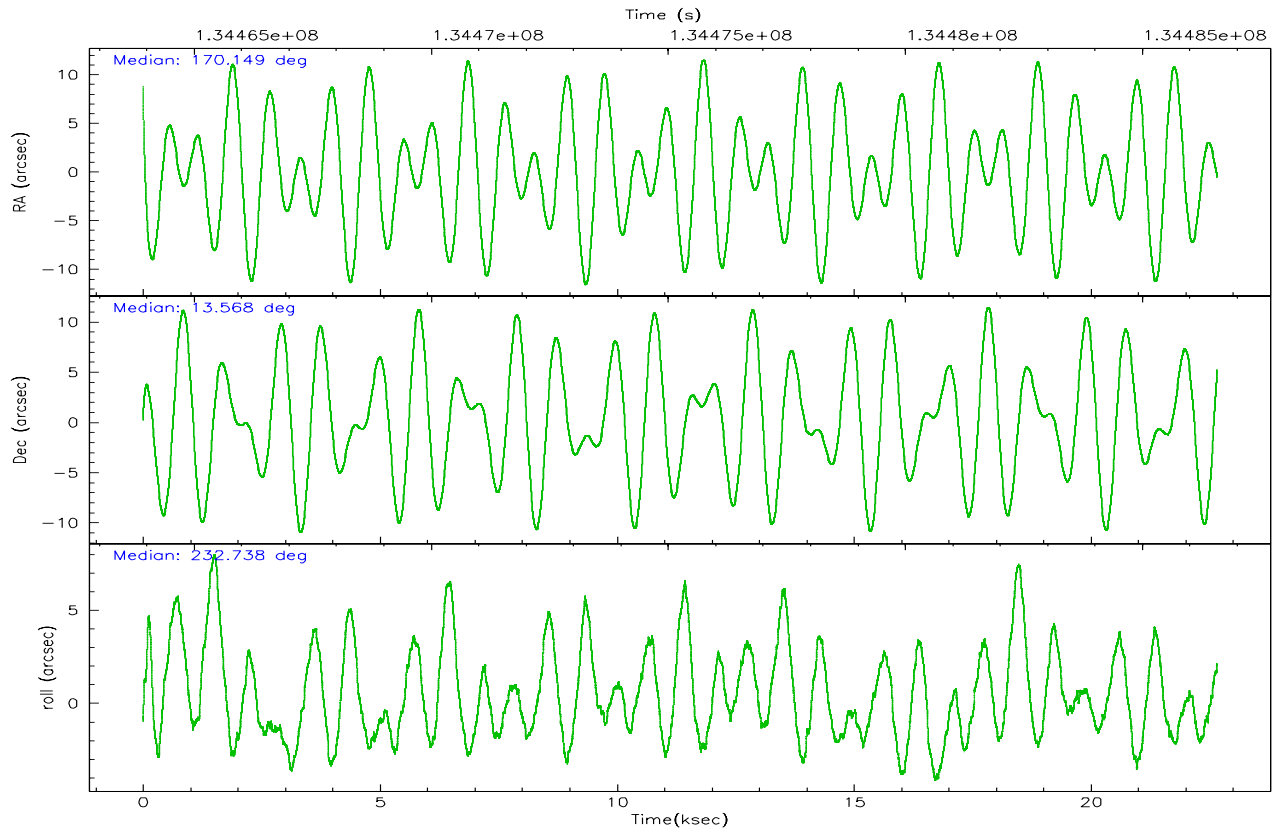
	ccd 2	ccd 3	ccd 5	ccd 6	ccd 7	ccd 8
grade 0 events	6823	7005	13236	6702	4366	11610
	4%	4%	6%	4%	2%	6%
grade 1 events	61	67	652	67	103	117
	0%	0%	0%	0%	0%	0%
grade 2 events	3622	3306	27219	3383	17542	8051
	2%	2%	12%	2%	9%	4%
grade 3 events	1564	1650	2464	1698	3657	4077
	1%	1%	1%	1%	1%	2%
grade 4 events	1573	1570	1970	1580	3527	3757
	1%	1%	0%	1%	1%	2%
grade 5 events	5209	5685	10378	6075	12180	7804
	3%	4%	4%	4%	6%	4%
grade 6 events	2786	2865	51832	3310	42141	9635
	1%	2%	24%	2%	22%	5%
grade 7 events	126121	119551	104764	120613	103743	139771
	85%	84%	49%	84%	55%	75%

2.2 Compared Parameters

Parameter	Planned	Actual	Parameter	Planned	Actual
Instrument	ACIS	ACIS	Obspar format version number	6	6
Detector	ACIS-235678	ACIS-235678	Obspar file type	PREDICTED	ACTUAL
Grating	NONE	NONE	Obspar update status	NONE	UPDATED
Data mode	FAINT	FAINT	On-chip summing requested	N	N
Observation mode	POINTING	POINTING	Subarray requested	NONE	NONE
Pointing RA	170.152091	170.1488903134933	Alternating exposures requested	N	N
Pointing Dec	13.594951	13.5678541509642	Primary exposure time	0.000000	3.2
Pointing Roll	232.585526	232.7429040501678			
SIM focus pos (mm)	-0.684267	-0.6828225247311905			
SIM defocus (mm)	0	0.001444936568705701			
SIM translation stage pos (mm)	-190.132523	-190.1425803651734			
SIM translation stage offset (mm)	0	0.01005778216563158			
Observation start time	134464078.184000	134462674.65676			
Observation start date	2002-04-06T07:06:54	2002-04-06T06:44:34			
Observation end time	134486578.184000	134487281.32026			
Observation end date	2002-04-06T13:21:54	2002-04-06T13:34:41			
Read mode	TIMED	TIMED			

2.3 Aspect



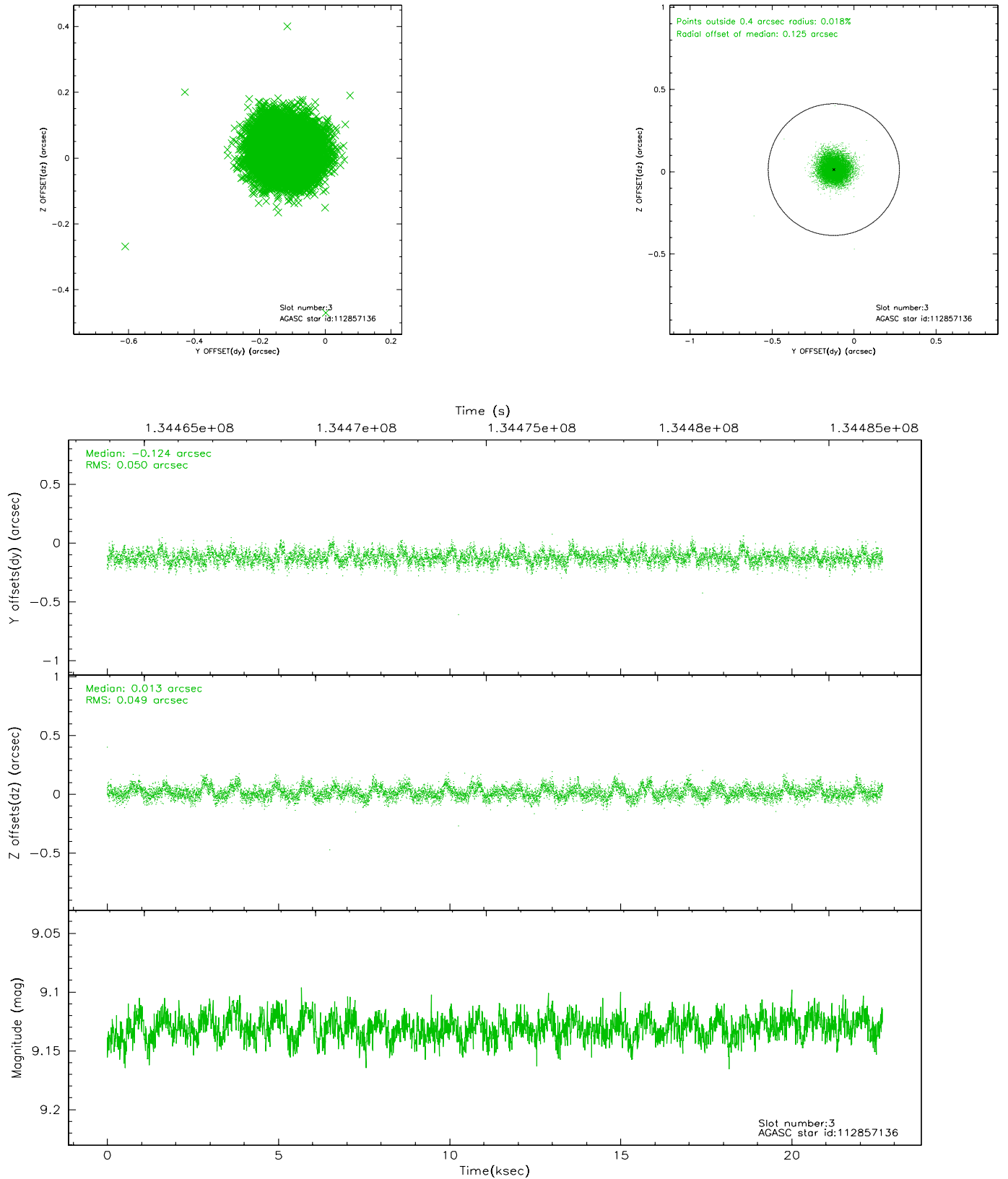


Slot Statistics

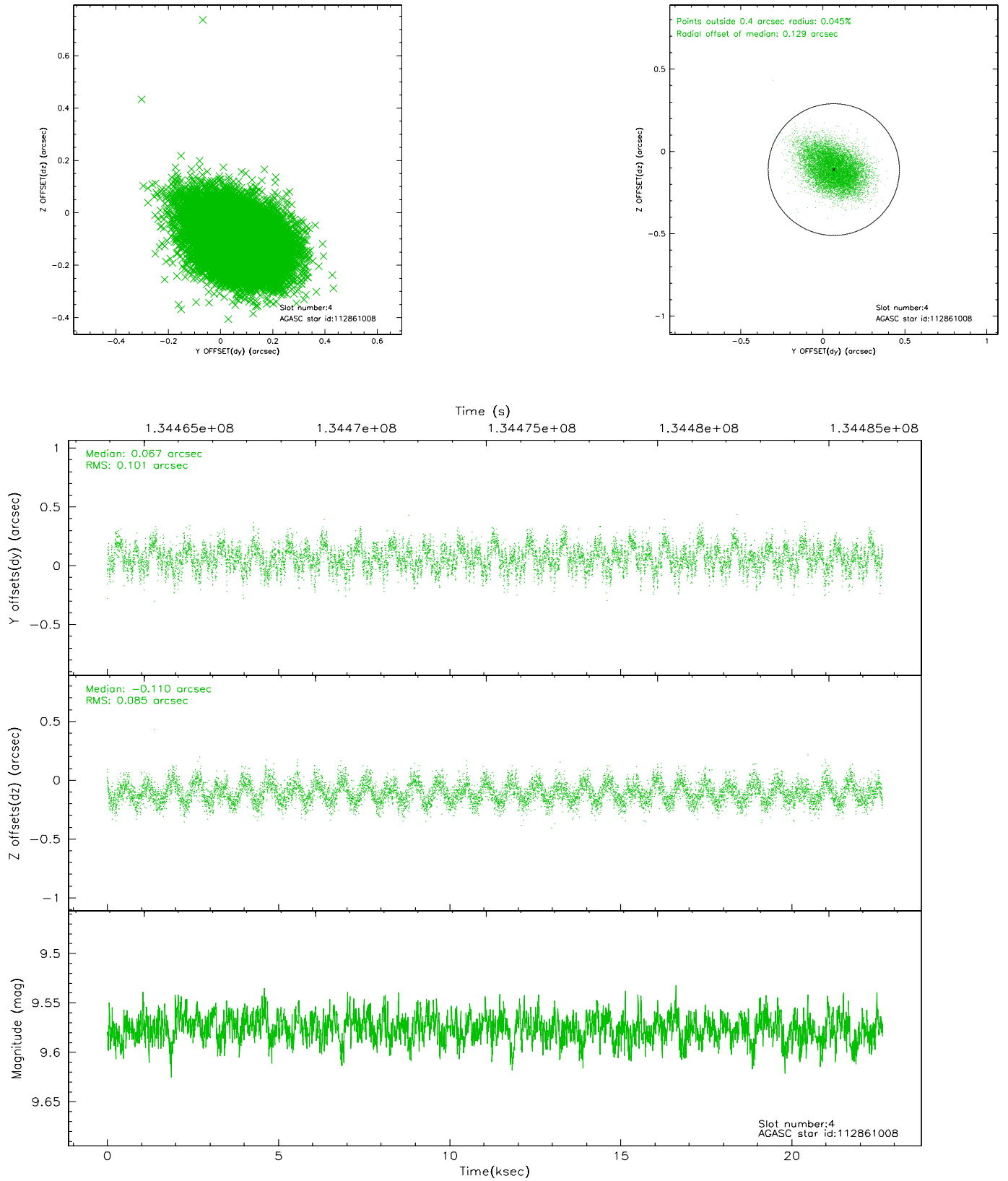
slot	status	id	mag	n_pts	med_dy	med_dz	dr1	dr2	ra	dec	mean_y	mean_z
0	FID	ACIS-S-2	7.12	5527	-0.043	0.022	0.006	0.010	0.000000	0.000000	-754.59	-1726.84
1	FID	ACIS-S-4	7.21	5526	-0.049	0.015	0.005	0.009	0.000000	0.000000	2158.56	181.57
2	FID	ACIS-S-5	7.24	5528	0.061	-0.028	0.006	0.010	0.000000	0.000000	-1807.19	175.25
3	GUIDE	112857136	9.13	11051	-0.124	0.013	0.075	0.120	170.586186	13.944462	-1921.76	439.51
4	GUIDE	112861008	9.58	11051	0.067	-0.110	0.140	0.226	169.237349	13.494852	2227.56	-2327.73
5	GUIDE	112862424	9.43	11049	0.019	0.061	0.082	0.136	170.459633	13.475243	-311.94	1116.70
6	GUIDE	112857720	9.37	11054	-0.013	-0.063	0.089	0.147	169.841312	13.775016	145.25	-1257.00
7	GUIDE	112862568	9.60	11046	0.051	0.097	0.120	0.207	170.030630	13.021719	1898.17	915.84

2.4 Star Slots

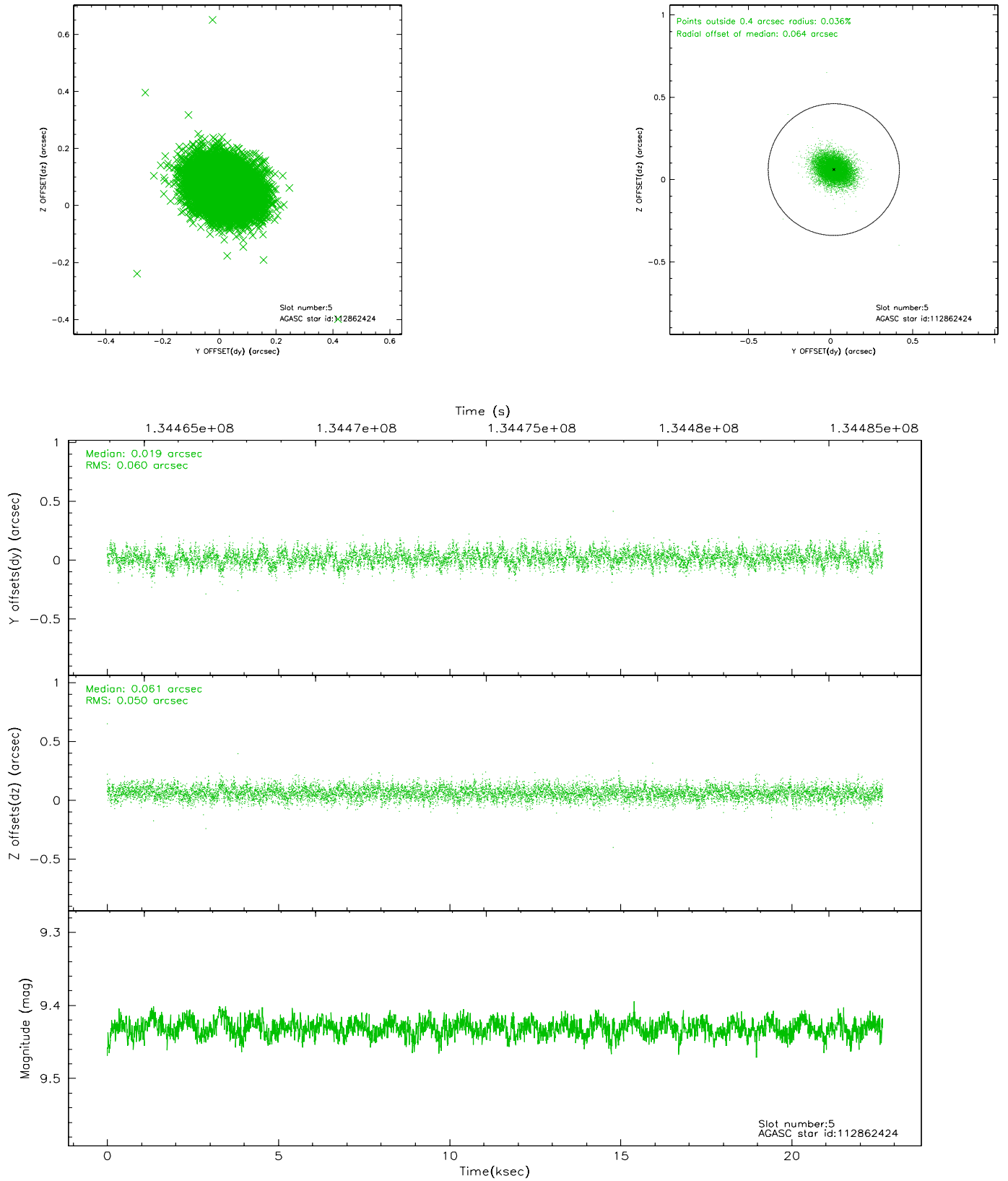
2.4.1 Slot 3



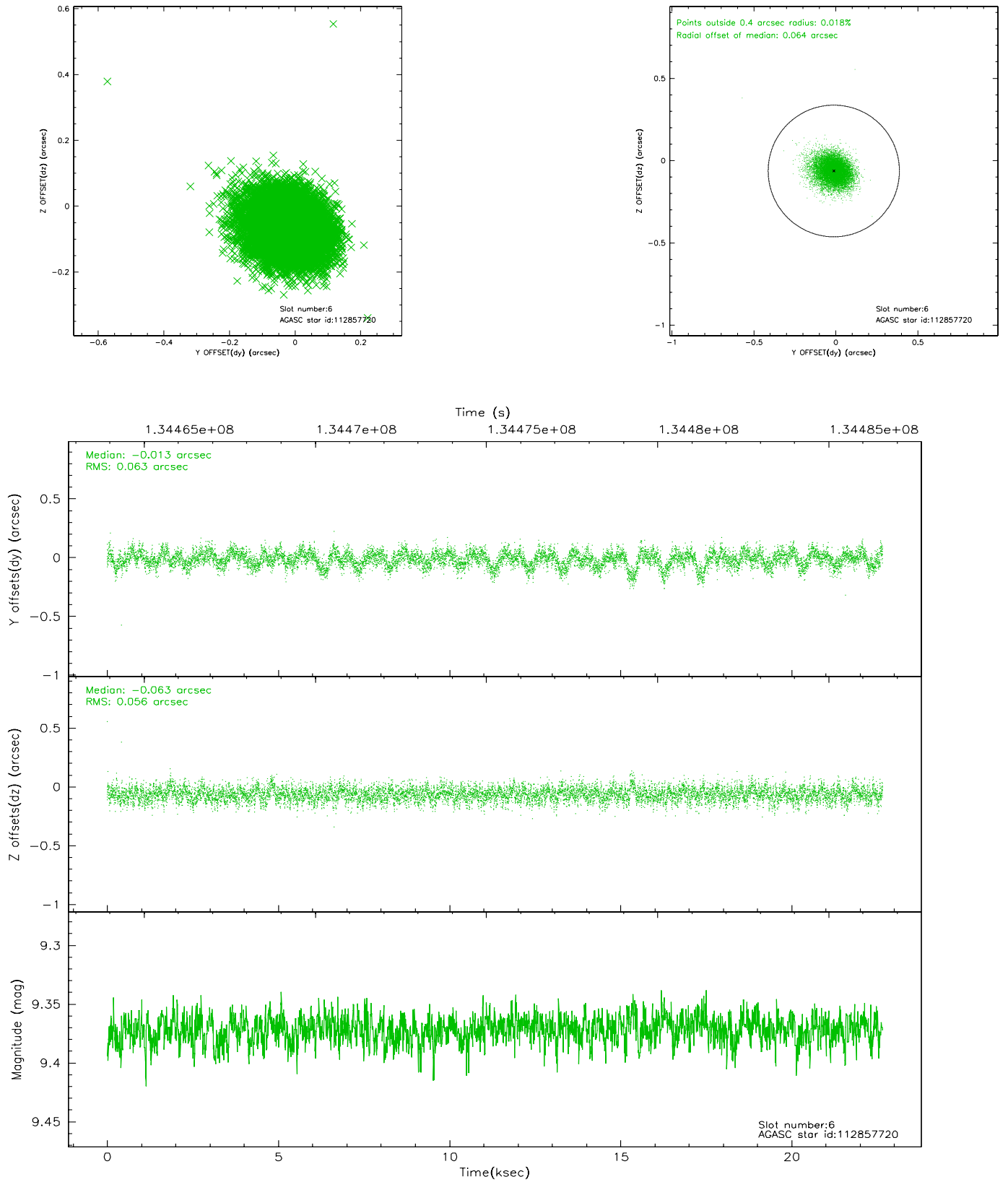
2.4.2 Slot 4



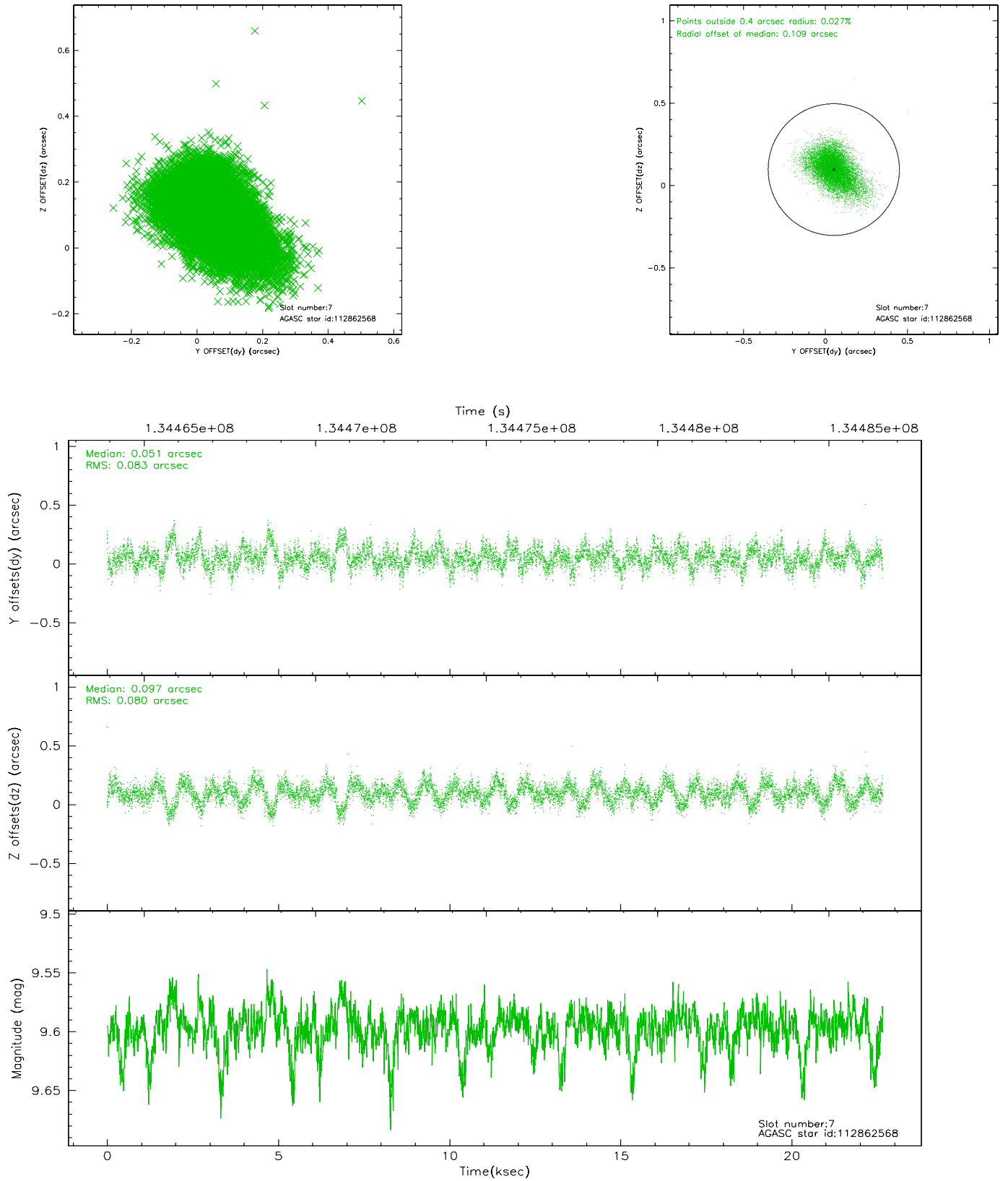
2.4.3 Slot 5



2.4.4 Slot 6

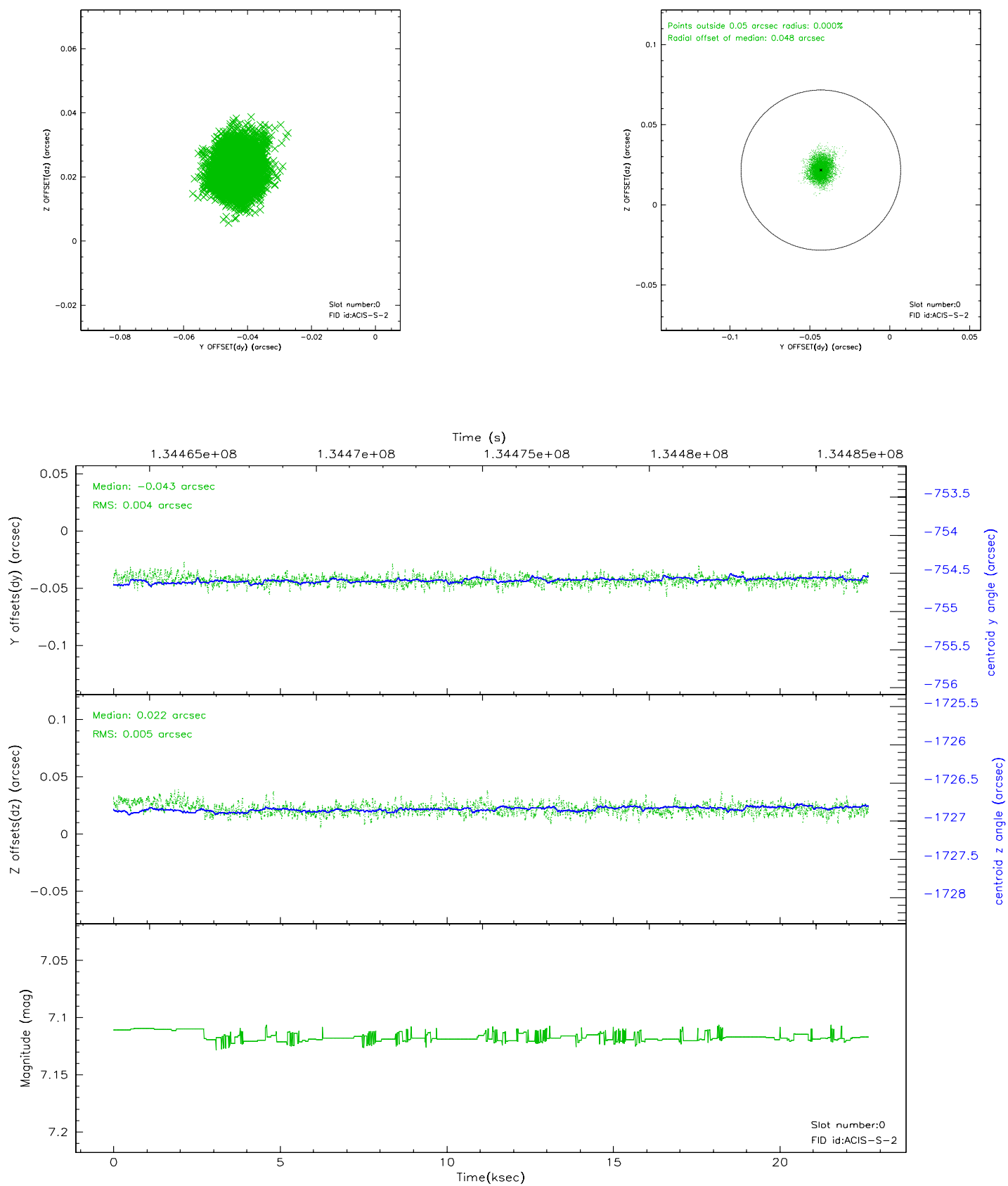


2.4.5 Slot 7

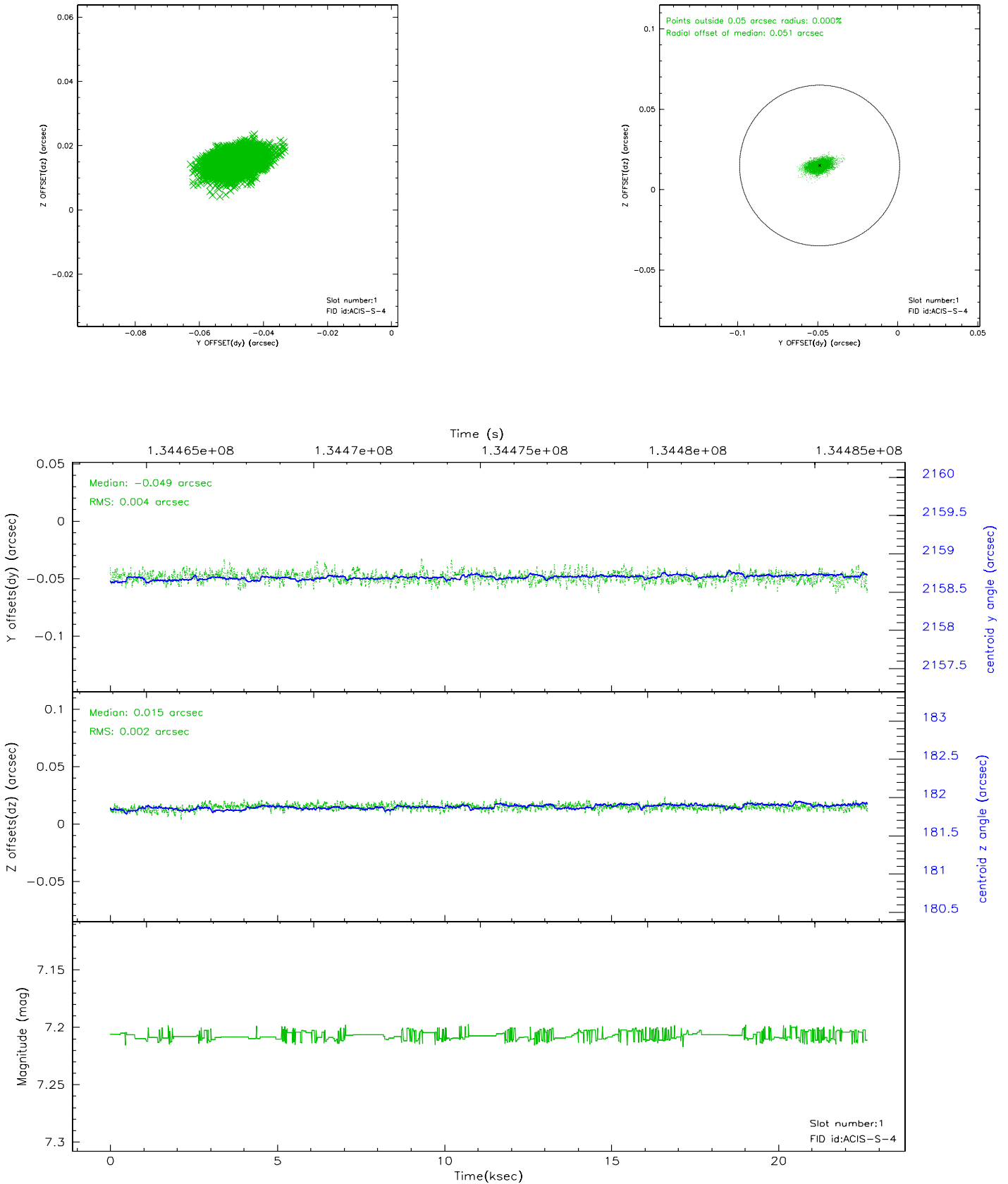


2.5 FID Slots

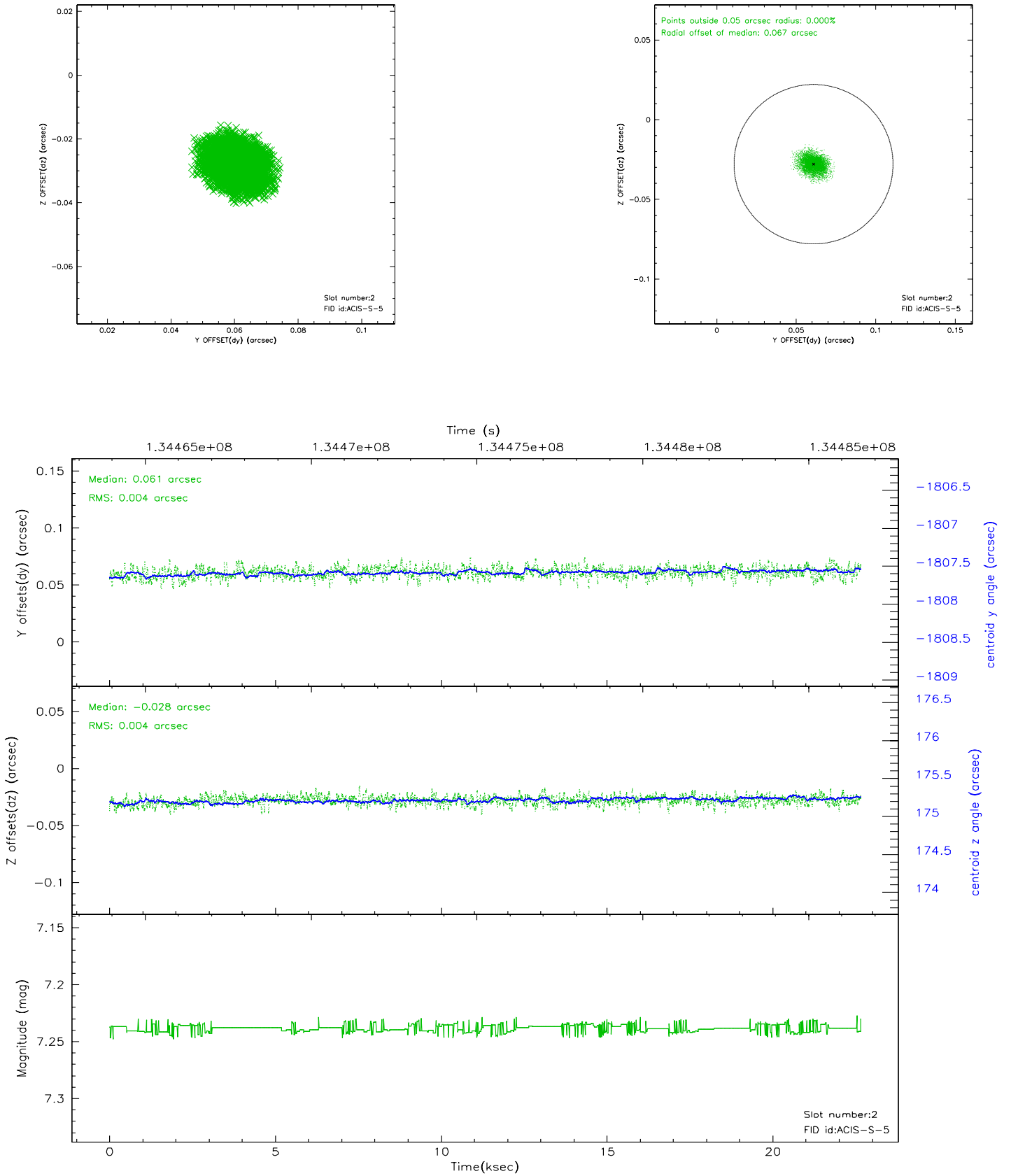
2.5.1 Slot 0



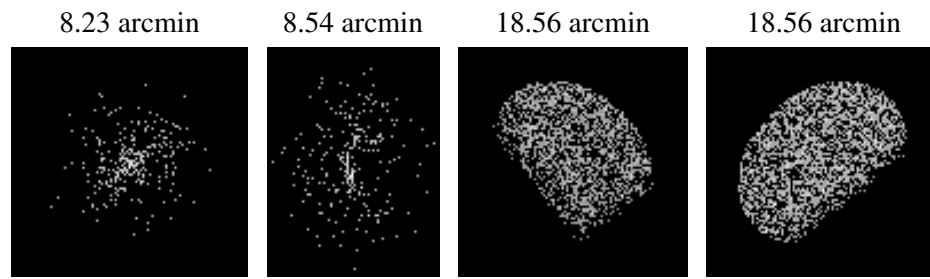
2.5.2 Slot 1



2.5.3 Slot 2



3 Point Sources



A Summary

A.1 Status

V&V Scientist	Jen Lauer
V&V Date (YYYY-MM-DD)	2006.09.10
V&V Edition	1
V&V Disposition and Status	OK
V&V Charge Time	22.256

A.2 Comments