

V&V Reference Report

L2 ASCDS Version : 7.6.9

Observation 2878 - L2 Version 3
Chandra X-Ray Center

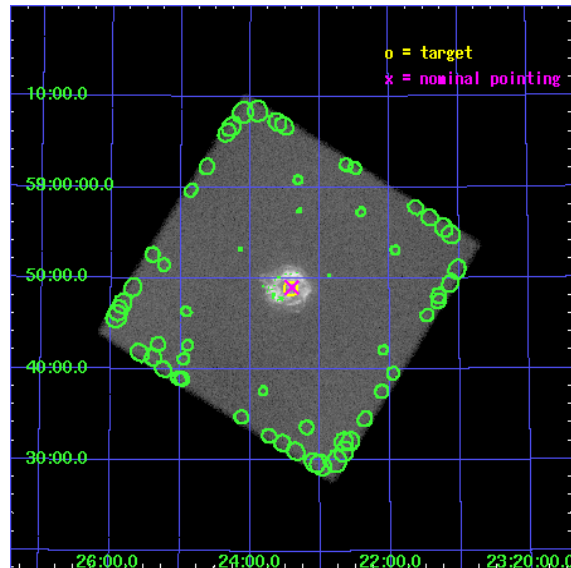
L2 Processing Date : Nov 21 2007

Contents

1	Front	2
2	OBI	3
2.1	OBI	3
2.1.1	Images	3
2.1.2	Parameters	4
2.1.3	Events	4
2.2	Compared Parameters	5
2.3	Aspect	6
2.4	Star Slots	9
2.4.1	Slot 3	9
2.4.2	Slot 4	10
2.4.3	Slot 5	11
2.4.4	Slot 6	12
2.4.5	Slot 7	13
2.5	FID Slots	14
2.5.1	Slot 0	14
2.5.2	Slot 1	15
2.5.3	Slot 2	16
3	Point Sources	17
A	Summary	18
A.1	Status	18
A.2	Comments	18

1 Front

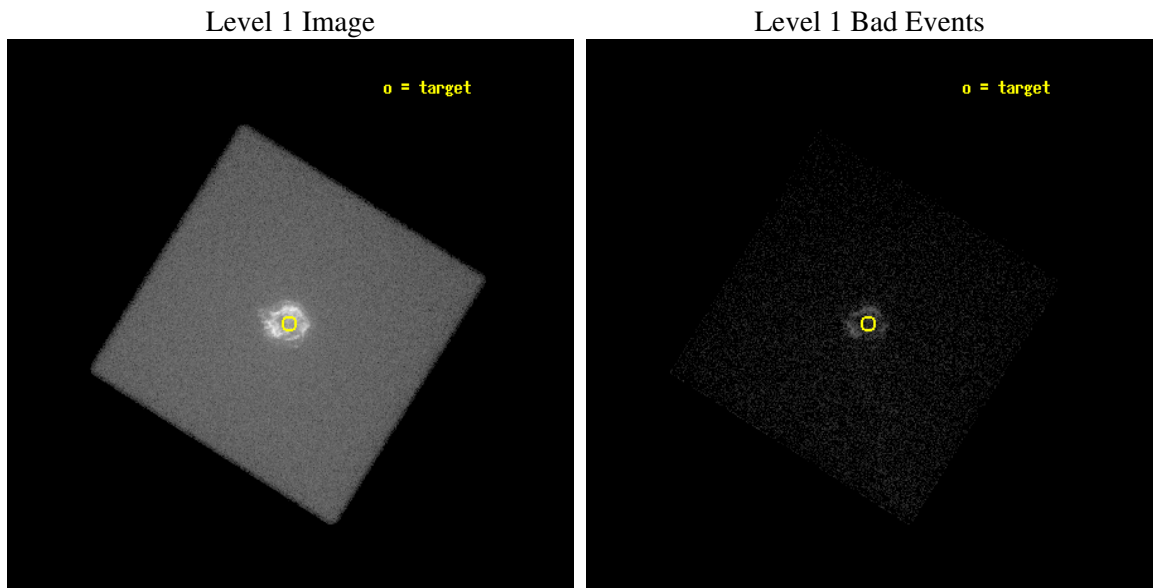
seq_num	590267
obs_id	2878
title	AO3B CALIBRATION OBSERVATIONS THE STANDARD CANDLES CAS A AND G21.5-09
observer	Dr. CXC Calibration
object	CAS A [HRC-I, Offsets=0,0,0]
ra_targ	350.8575
dec_targ	58.814833
ra_nom	350.85077865407
dec_nom	58.817362605089
roll_nom	167.0912779754
revision	3
ontime	4889.5064517558
livetime	1541.5992494419
l2events	736074



2 OBI

2.1 OBI

2.1.1 Images



2.1.2 Parameters

obi_num	2
ascdsver	7.6.11.2
caldbver	3.4.1
date	2007-11-21T23:34:32
revision	3

sched_exp_time	5017.850000
ontime	4889.5064517558
l1events	968369

2.1.3 Events

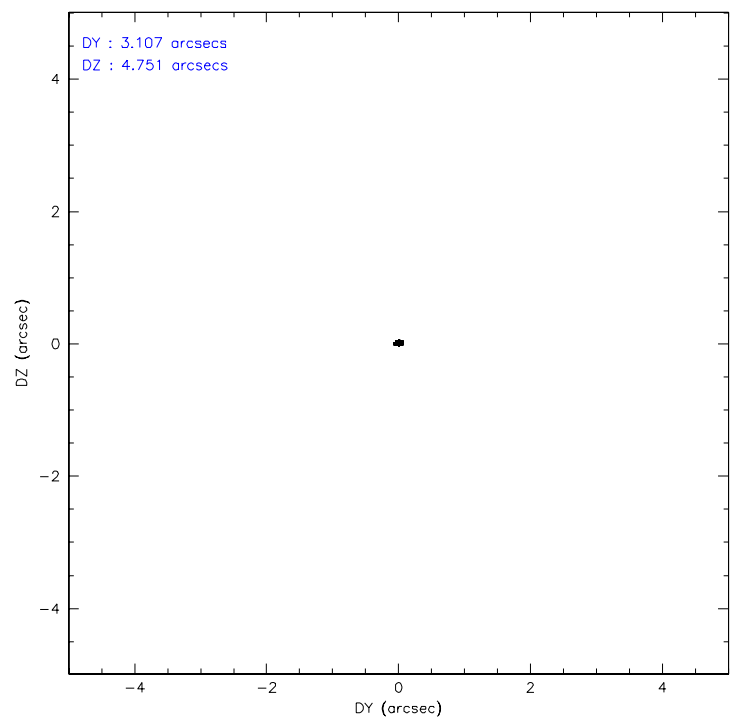
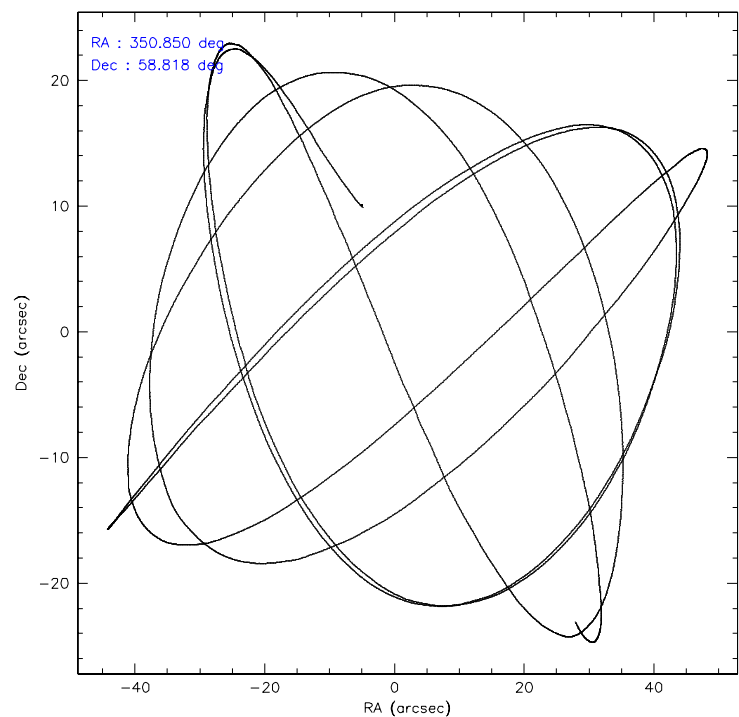
Level 1 Events

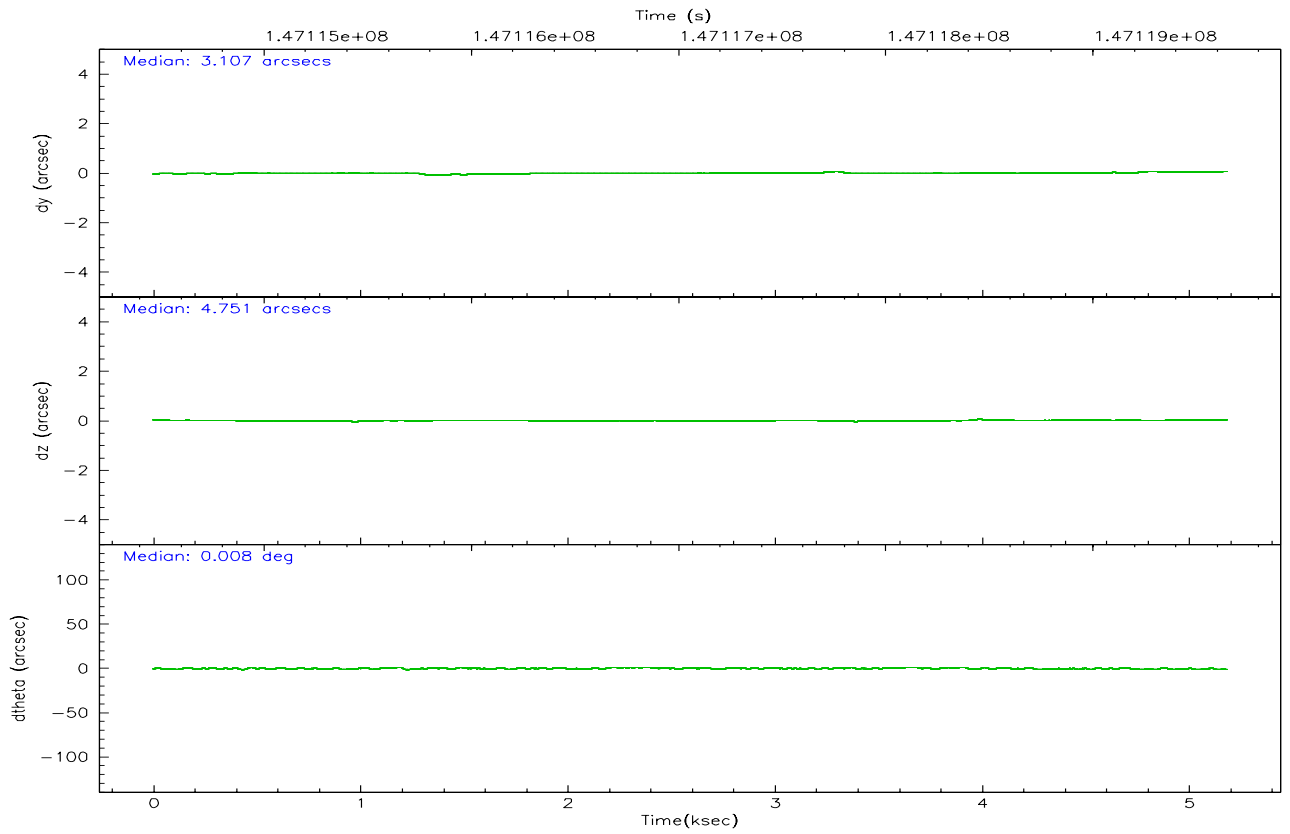
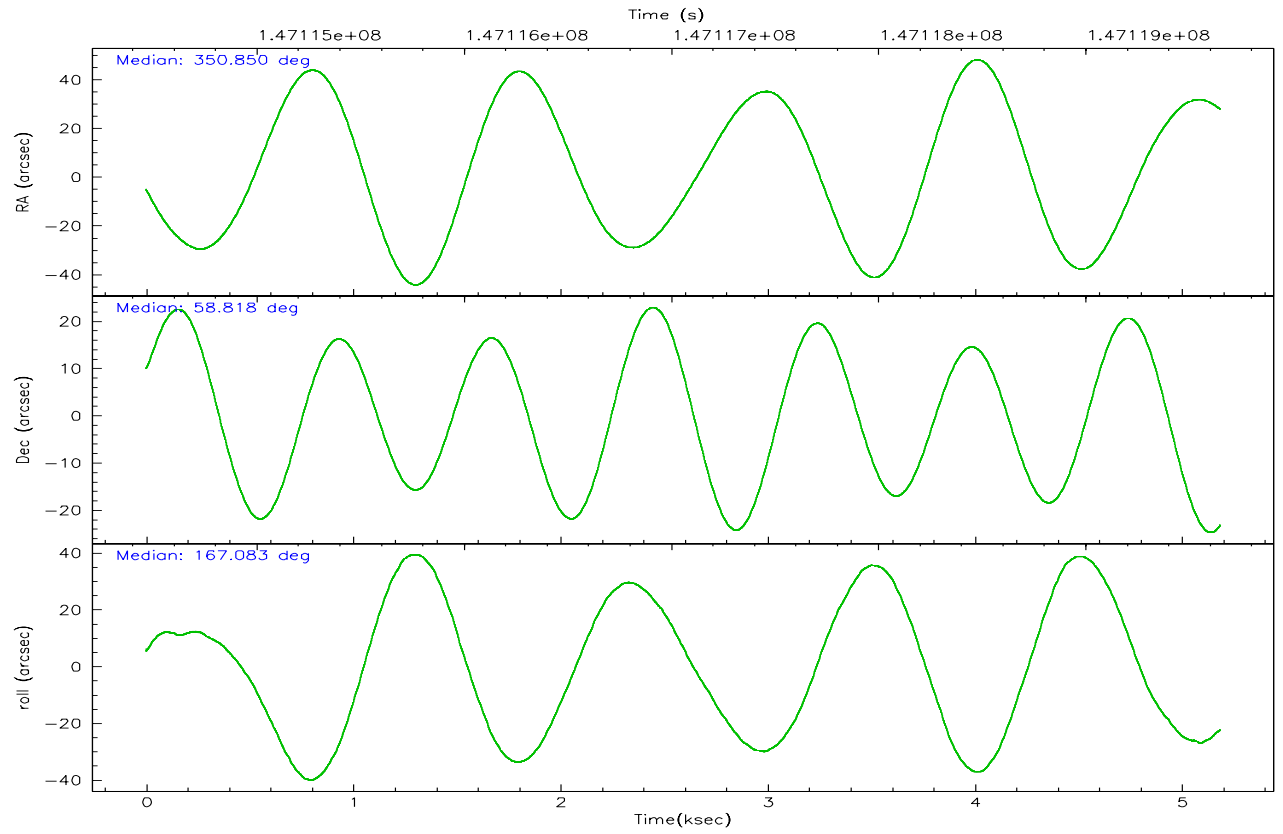
	segment 0
level 1 events	968369
rejected events	66797
rejected %	6%

2.2 Compared Parameters

Parameter	Planned	Actual	Parameter	Planned	Actual
Instrument	HRC	HRC	Obspar format version number	6	6
Detector	HRC-I	HRC-I	Obspar file type	PREDICTED	ACTUAL
Grating	NONE	NONE	Obspar update status	NONE	UPDATED
Data mode	OBSERVING	OBSERVING			
Observation mode	POINTING	POINTING			
Pointing RA	350.900632	350.8507786540671			
Pointing Dec	58.825817	58.81736260508884			
Pointing Roll	167.144103	167.0912779754038			
Window start time	141868864.184000	141868864.184000			
Window stop time	147139264.184000	147139264.184000			
SIM focus pos (mm)	-1.040293	-1.038866356238299			
SIM defocus (mm)	0	0.001426264420575141			
SIM translation stage pos (mm)	126.985494	126.9829799899862			
SIM translation stage offset (mm)	0	0.002508901615314585			
Observation start time	147114627.184000	147114220.96226			
Observation start date	2002-08-30T17:09:23	2002-08-30T17:03:40			
Observation end time	147119645.184000	147119959.93749			
Observation end date	2002-08-30T18:33:01	2002-08-30T18:39:19			

2.3 Aspect



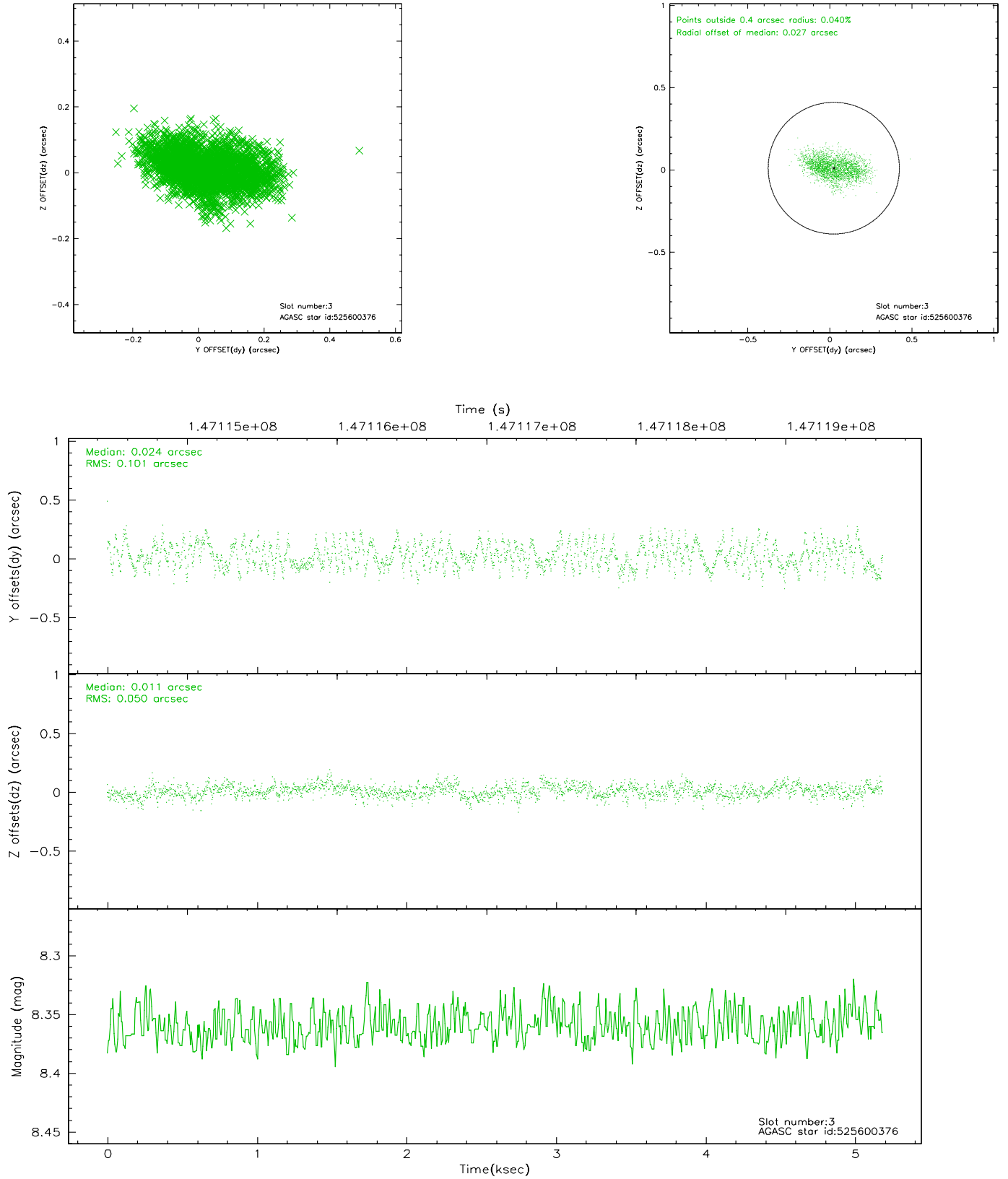


Slot Statistics

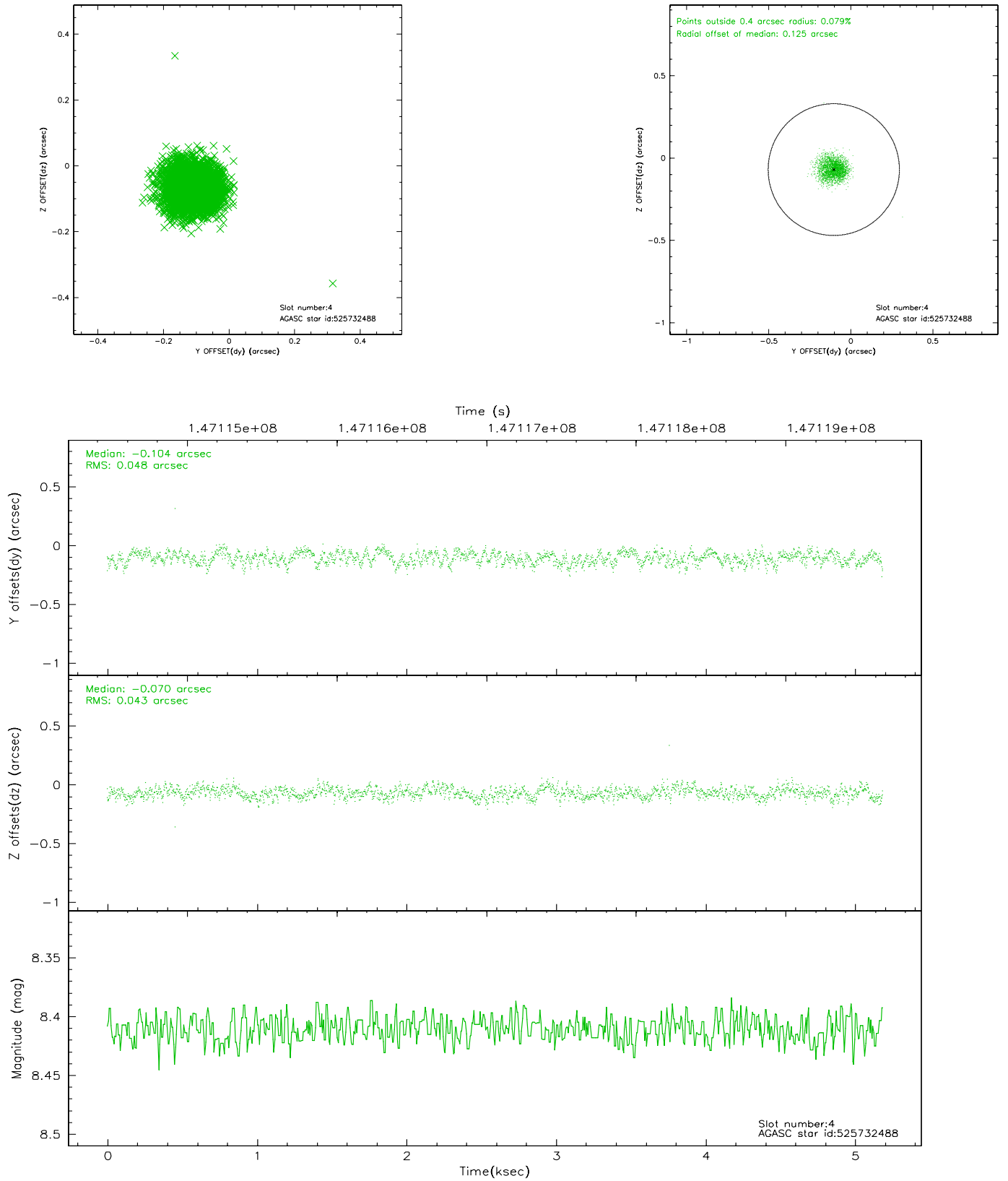
slot	status	id	mag	n_pts	med_dy	med_dz	dr1	dr2	ra	dec	mean_y	mean_z
0	FID	HRC-I-1	6.99	1265	0.004	0.052	0.007	0.012	0.000000	0.000000	-758.57	-1292.50
1	FID	HRC-I-2	7.03	1265	0.086	-0.060	0.006	0.010	0.000000	0.000000	853.55	-1295.18
2	FID	HRC-I-3	7.08	1265	0.029	-0.081	0.006	0.011	0.000000	0.000000	-1186.38	1010.91
3	GUIDE	525600376	8.36	2531	0.024	0.011	0.122	0.194	349.956653	59.633357	2323.64	-2463.31
4	GUIDE	525732488	8.41	2530	-0.104	-0.070	0.069	0.107	350.087090	58.516915	1245.03	1414.85
5	GUIDE	525609504	9.08	2531	-0.128	-0.187	0.093	0.152	349.896632	58.356658	1474.84	2055.61
6	GUIDE	525732528	9.37	2530	0.102	0.187	0.107	0.171	351.607241	59.298932	-886.06	-1955.06
7	GUIDE	525734296	9.50	2527	0.108	0.057	0.105	0.173	351.276372	58.418153	-1018.51	1270.65

2.4 Star Slots

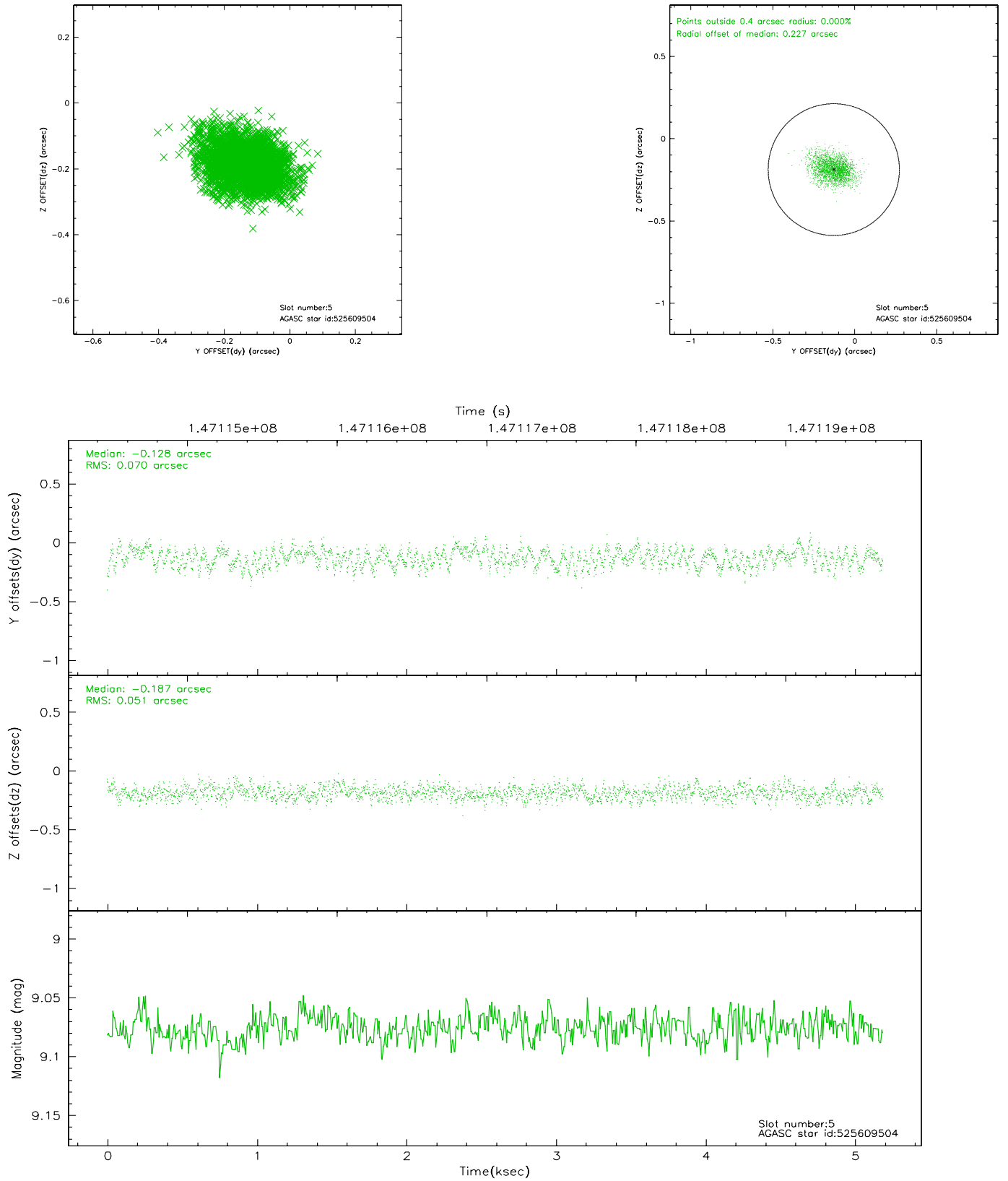
2.4.1 Slot 3



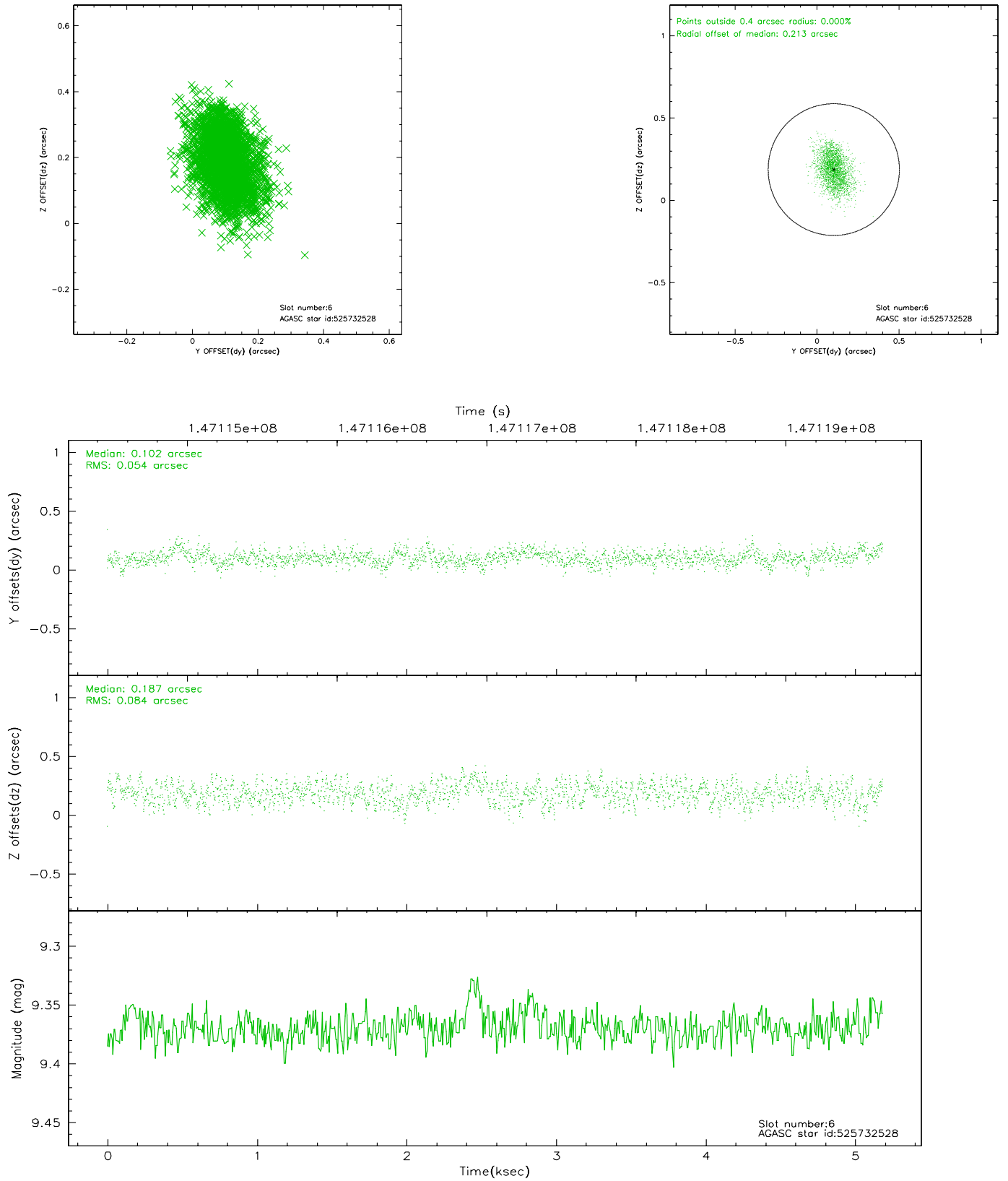
2.4.2 Slot 4



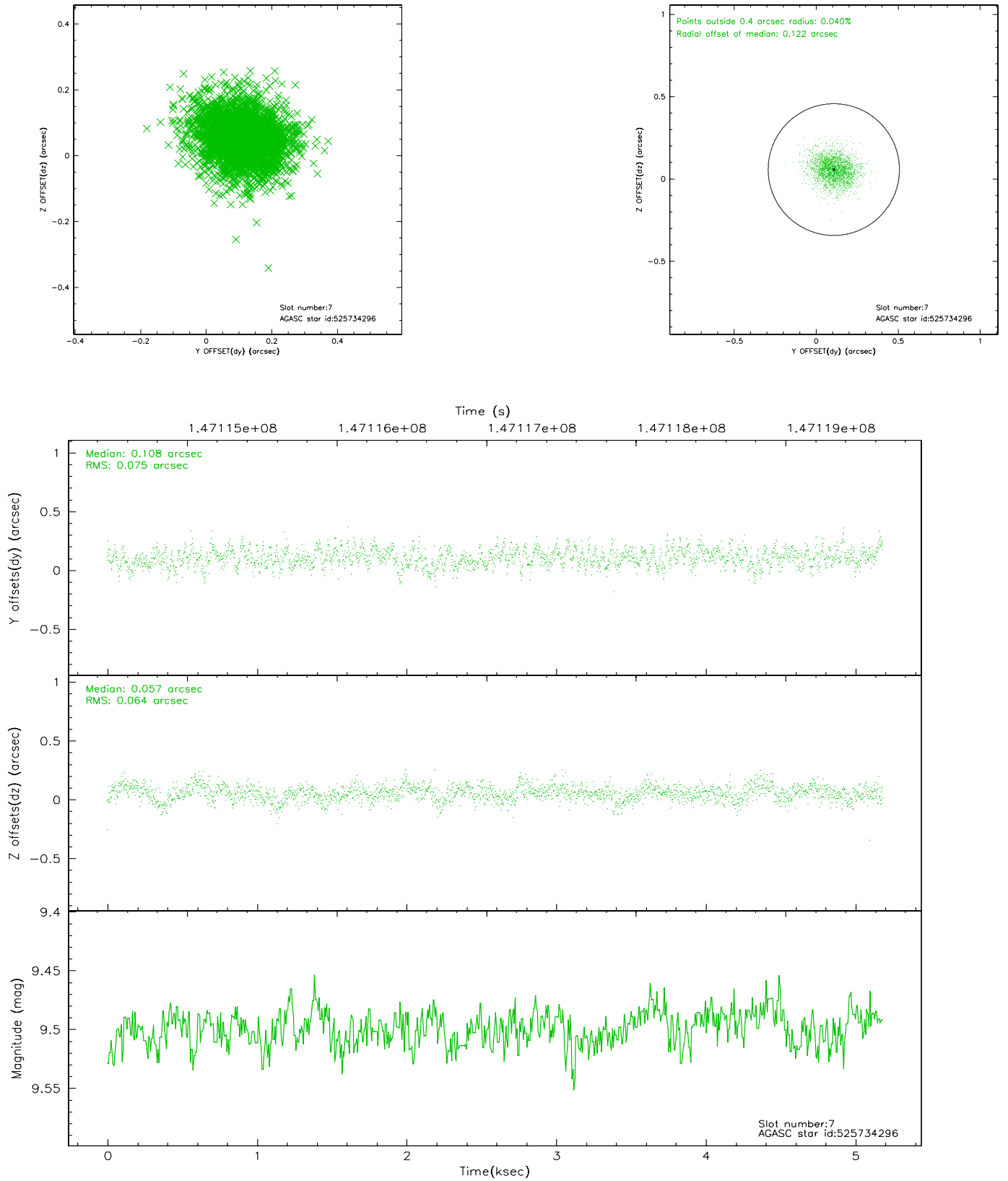
2.4.3 Slot 5



2.4.4 Slot 6

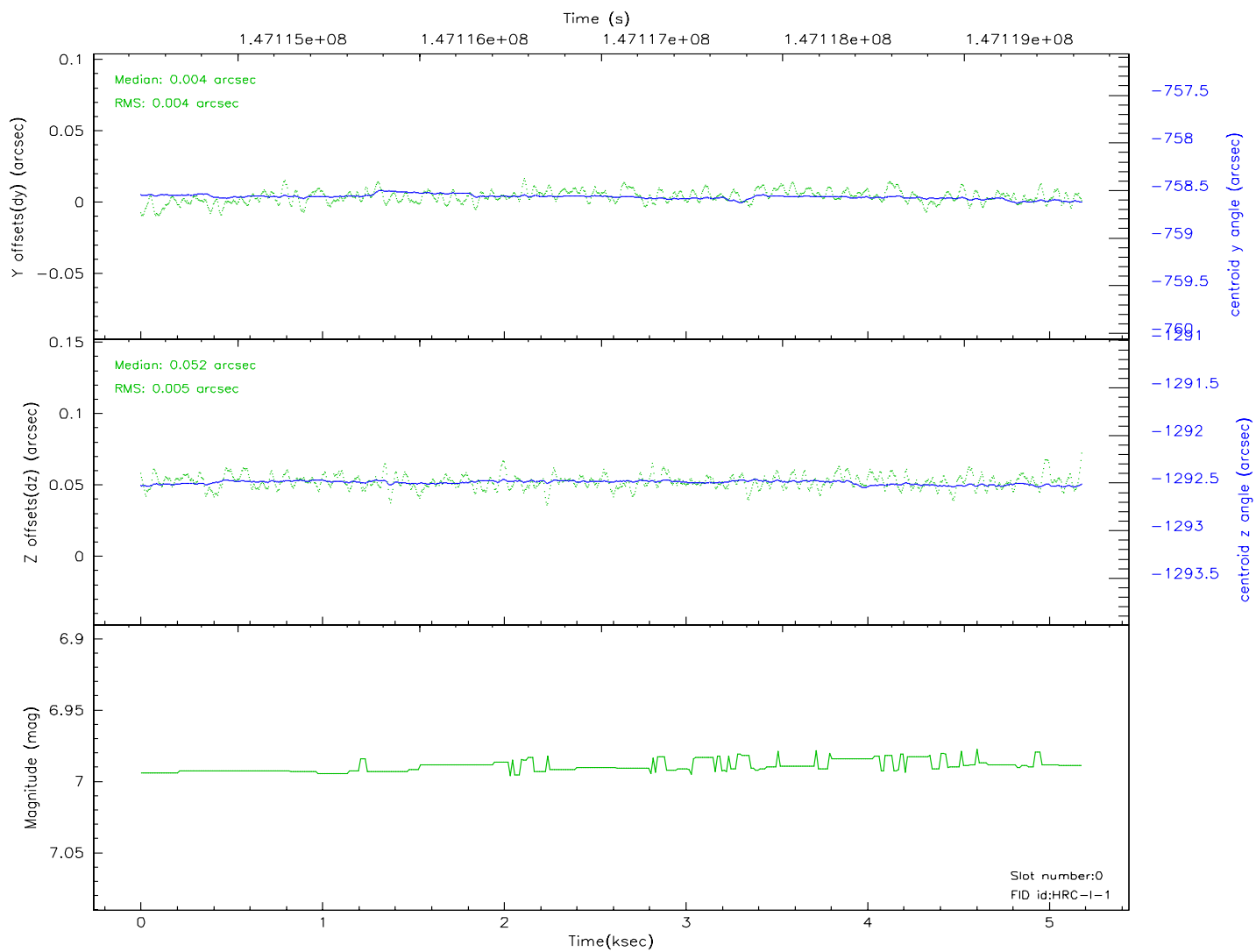
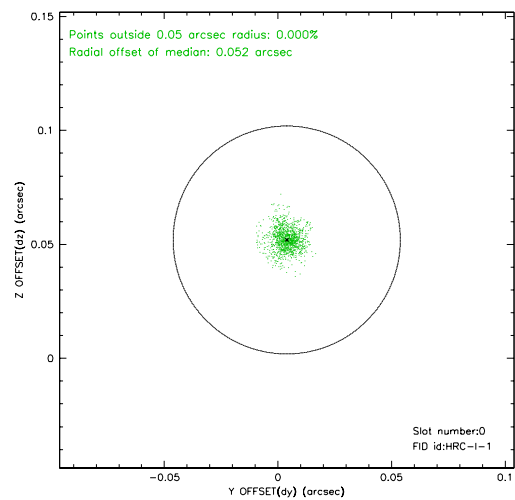
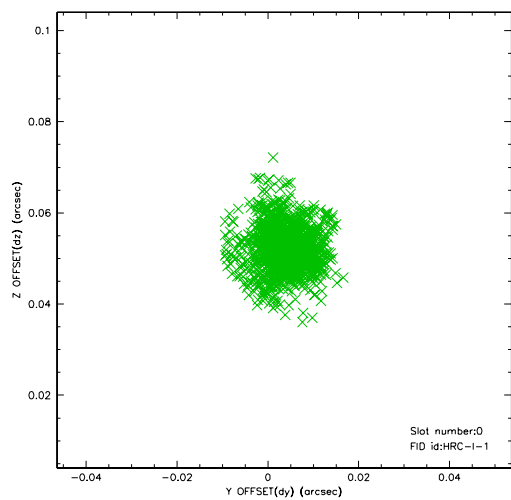


2.4.5 Slot 7

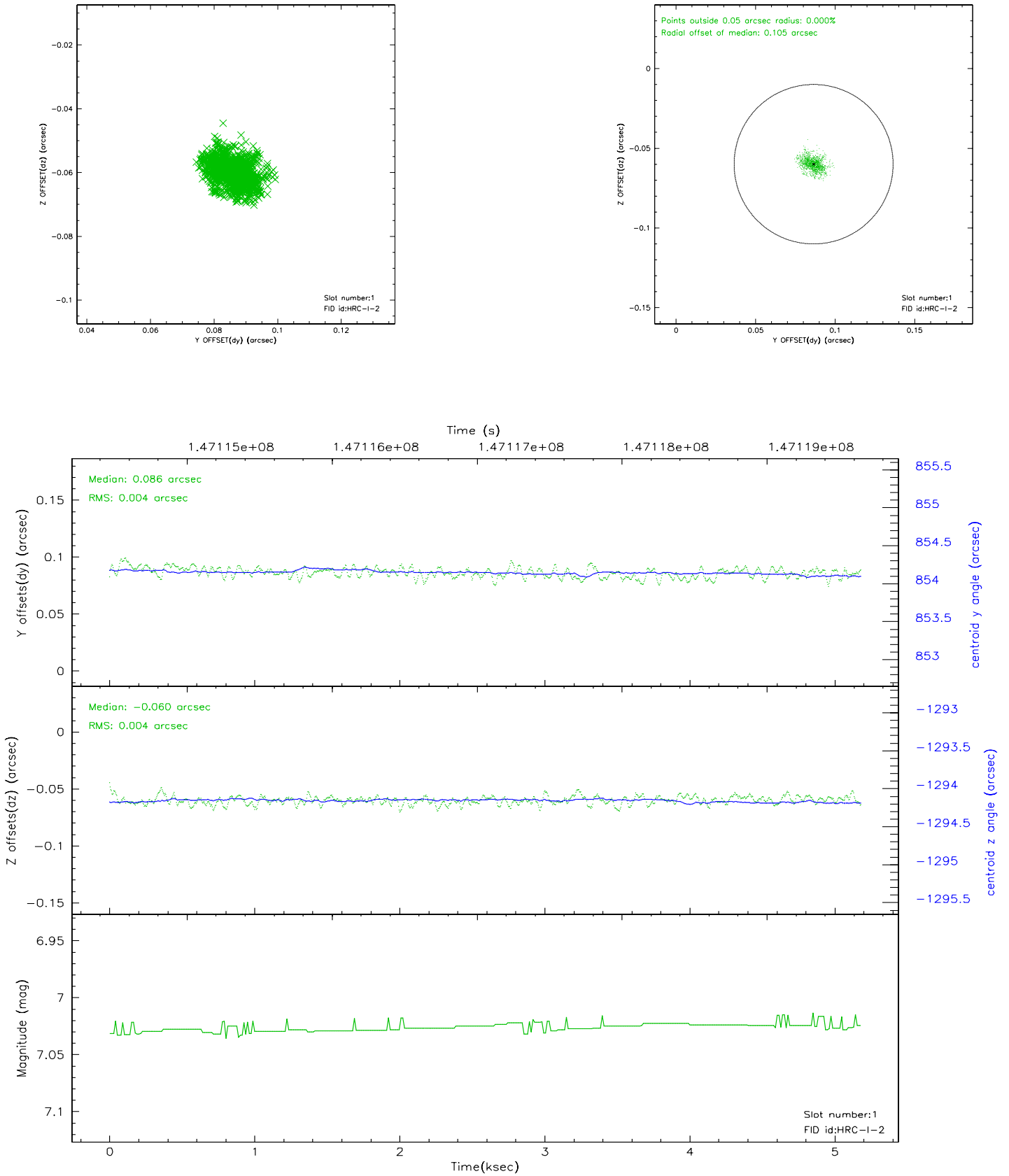


2.5 FID Slots

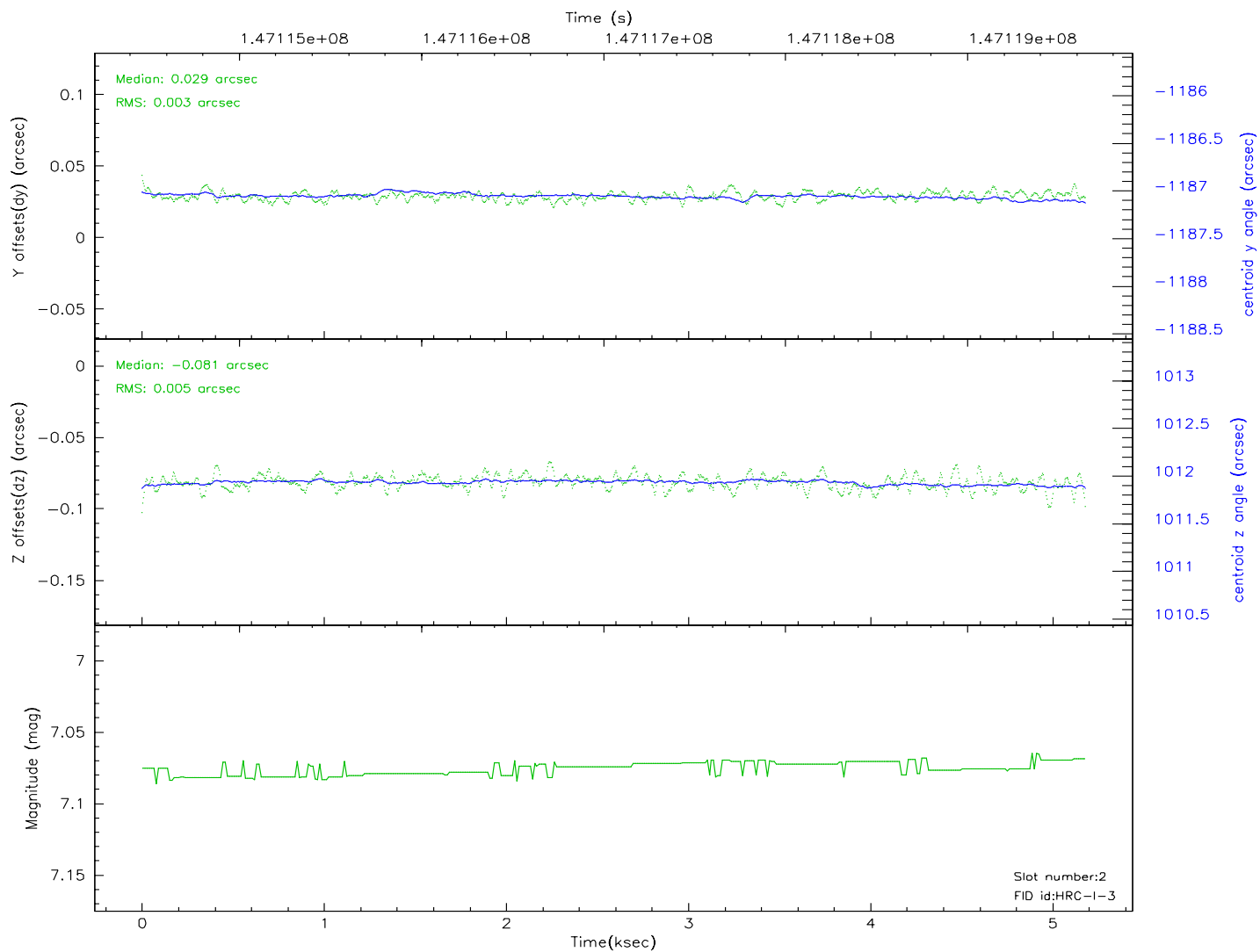
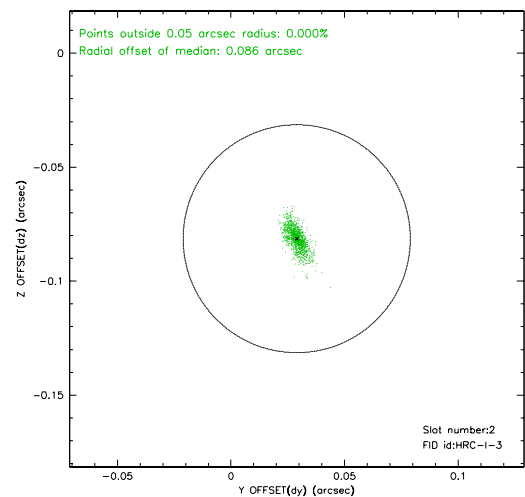
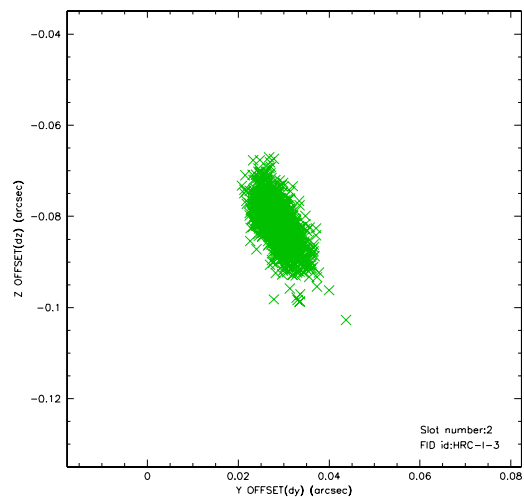
2.5.1 Slot 0



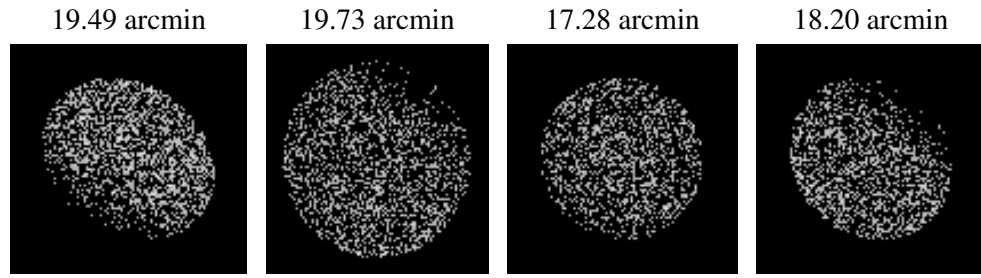
2.5.2 Slot 1



2.5.3 Slot 2



3 Point Sources



A Summary

A.1 Status

V&V Scientist	Jen Lauer
V&V Date (YYYY-MM-DD)	2007.12.04
V&V Edition	1
V&V Disposition and Status	OK
V&V Charge Time	4.889

A.2 Comments

Window constraint met.

The current observation has been reprocessed as part of Repro III ('C' supplement) the purpose of which is to update all HRC-I ObsIDs since Jan 2000 to the latest calibrations available for that configuration. Specifically, we are updating the DEGAP solution and the Gain Maps applied. For more information see the Repro IIIC web page at

<http://asc.harvard.edu/cda/repro3.html#IIIC>

and the associated links.