

V&V Reference Report

L2 ASCDS Version : 7.6.9

Observation 2758 - L2 Version 001
Chandra X-Ray Center

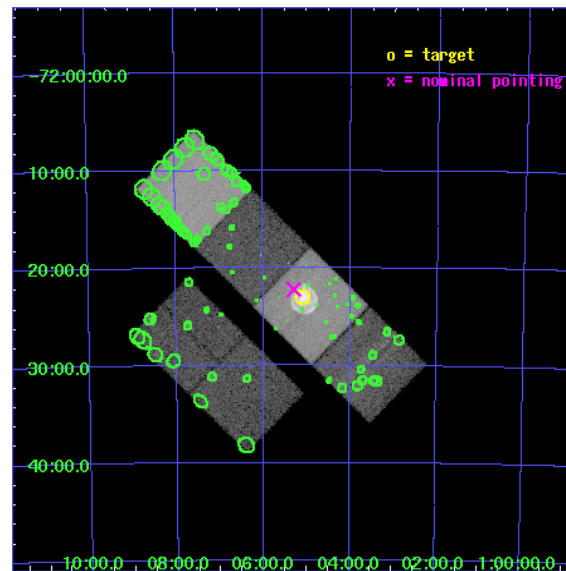
L2 Processing Date : Sep 28 2006

Contents

1	Front	2
2	OBI	3
2.1	OBI	3
2.1.1	Images	3
2.1.2	Bias	3
2.1.3	Parameters	4
2.1.4	Events	4
2.2	Compared Parameters	5
2.3	Aspect	6
2.4	Star Slots	9
2.4.1	Slot 3	9
2.4.2	Slot 4	10
2.4.3	Slot 5	11
2.4.4	Slot 6	12
2.4.5	Slot 7	13
2.5	FID Slots	14
2.5.1	Slot 0	14
2.5.2	Slot 1	15
2.5.3	Slot 2	16
3	Point Sources	17
A	Summary	18
A.1	Status	18
A.2	Comments	18

1 Front

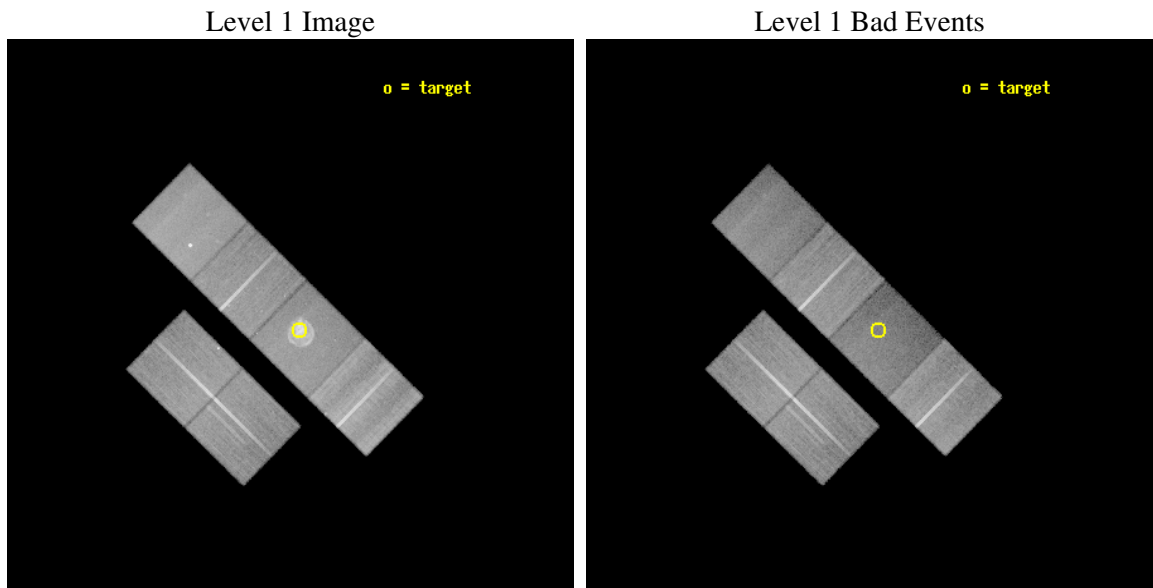
seq_num	500208
obs_id	2758
title	SNR 0103-72.6 : AN UNUSUALLY BRIGHT REMNANT IN THE SMC ALTERNATE TARGET
observer	Professor Gordon Garmire
object	SNR 0103-72.6
dtcycle	0
cycle	P
ra_targ	16.270833
dec_targ	-72.383333
ra_nom	16.323606453053
dec_nom	-72.370073783034
roll_nom	44.505531255346
revision	2
ontime	49455.999815762
livetime	48829.758167267
ontime2	49443.035954714
ontime3	49449.517885208
ontime5	49455.999815762
ontime6	49455.999815762
ontime7	49455.999815762
ontime8	49452.758845508
l2events	387387



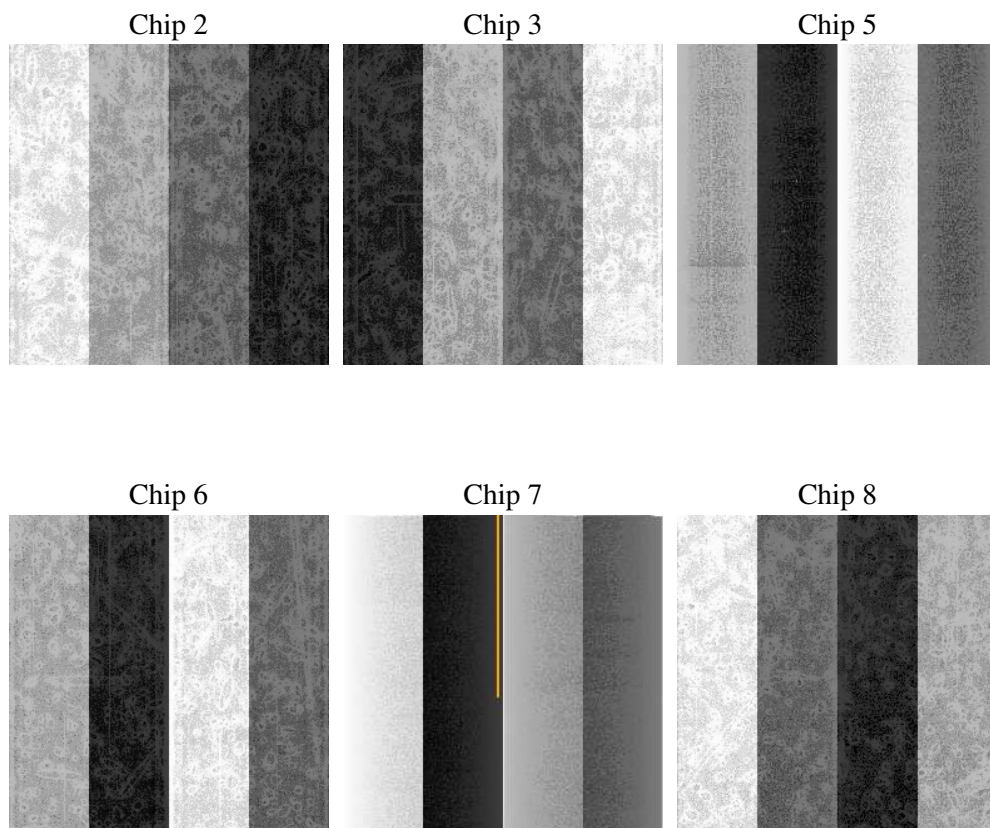
2 OBI

2.1 OBI

2.1.1 Images



2.1.2 Bias



2.1.3 Parameters

obi_num	1
ascdsver	7.6.9
caldsver	3.2.3
date	2006-09-28T21:18:44
revision	2

sched_exp_time	49300.000000
ontime	49567.880964696
ontime2	49554.917103648
ontime3	49561.399004221
ontime5	49567.880964696
ontime6	49567.880964696
ontime7	49567.880964696
ontime8	49564.639964521
l1events	1628818

2.1.4 Events

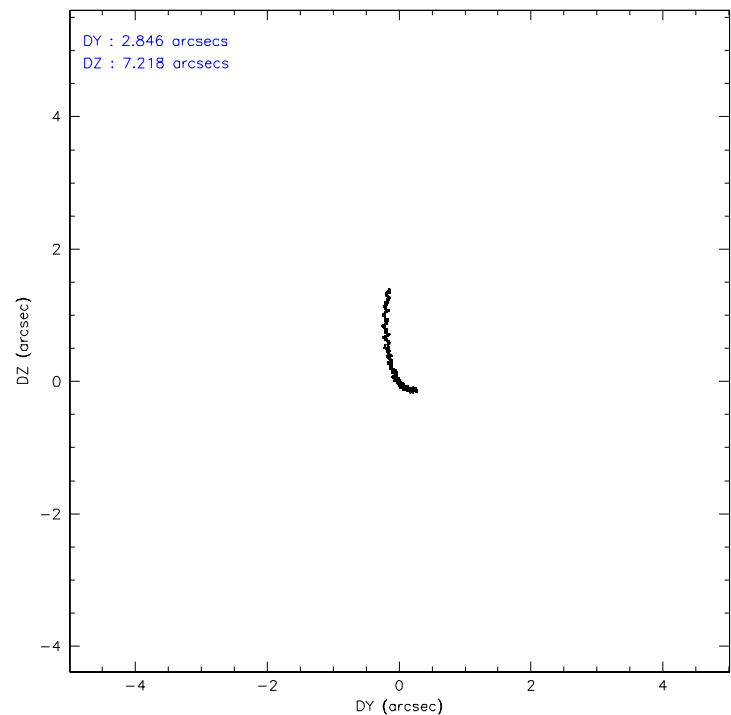
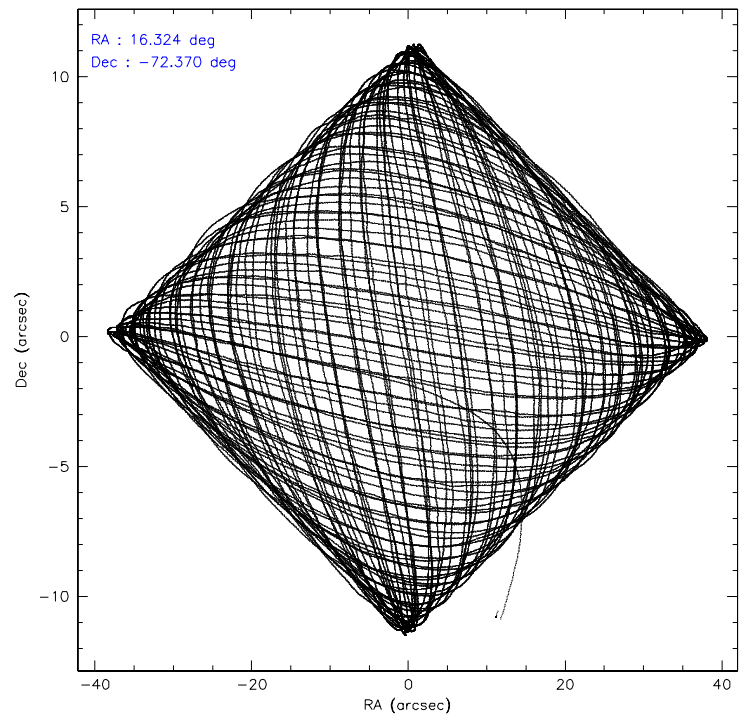
	ccd 2	ccd 3	ccd 5	ccd 6	ccd 7	ccd 8
level 1 events	259168	238463	287767	247599	275239	320582
rejected events	232122	215652	142808	219147	119311	229020
rejected %	89%	90%	49%	88%	43%	71%

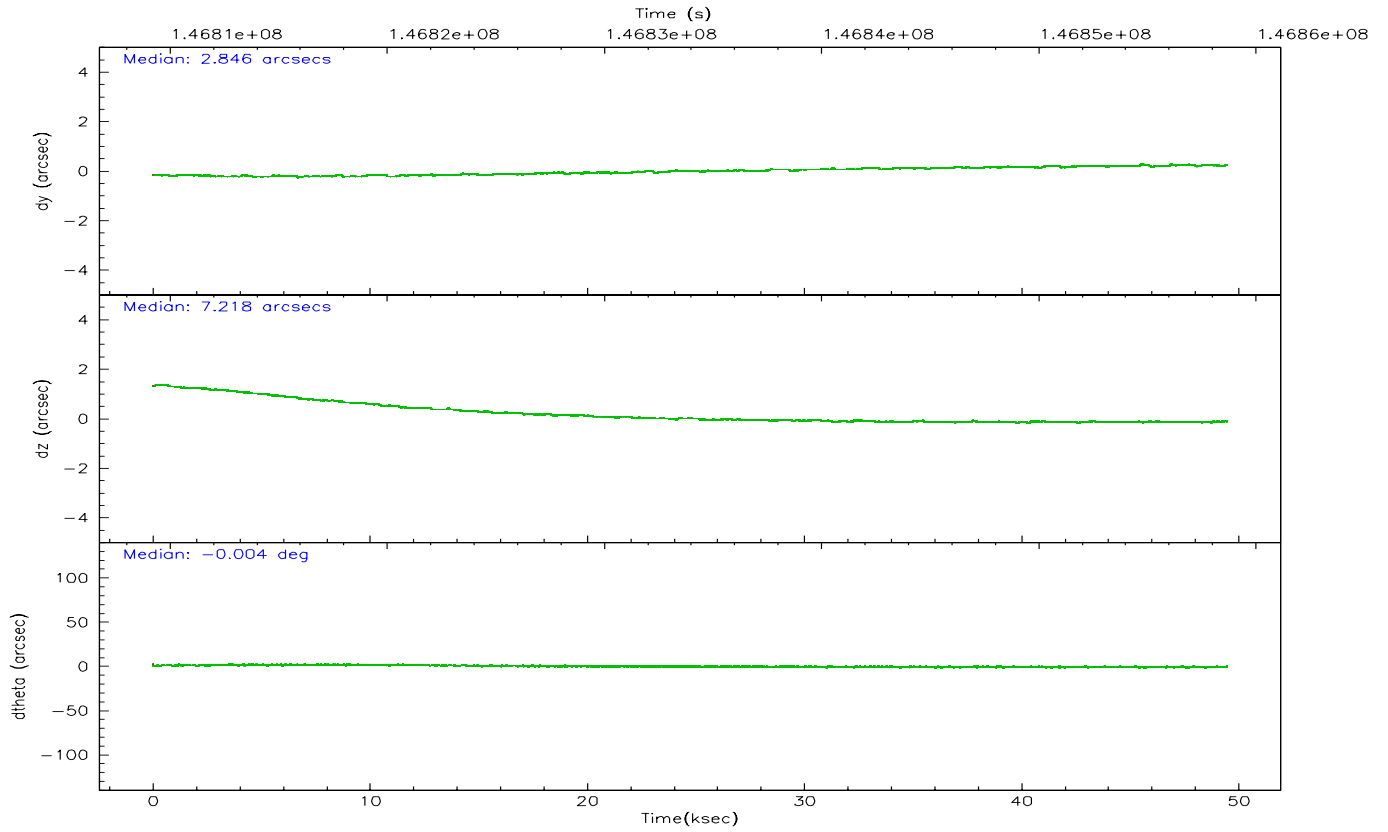
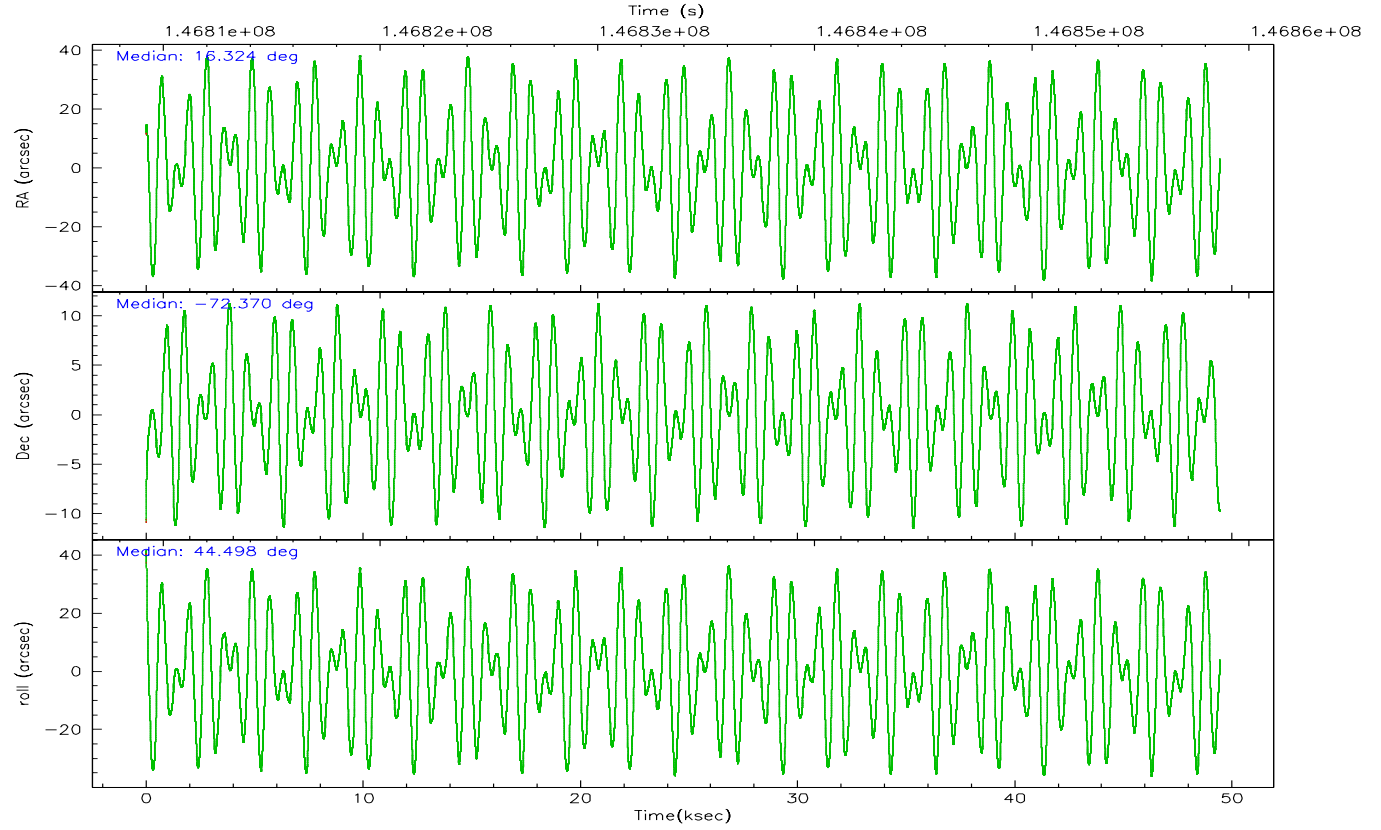
	ccd 2	ccd 3	ccd 5	ccd 6	ccd 7	ccd 8
grade 0 events	11811	9111	10533	12531	25381	26661
	4%	3%	3%	5%	9%	8%
grade 1 events	144	121	61	105	103	241
	0%	0%	0%	0%	0%	0%
grade 2 events	5842	4637	44835	5553	38839	16814
	2%	1%	15%	2%	14%	5%
grade 3 events	2554	2615	3404	2892	11849	14340
	0%	1%	1%	1%	4%	4%
grade 4 events	2789	2461	3170	2738	11418	12969
	1%	1%	1%	1%	4%	4%
grade 5 events	6616	7567	15565	7746	17869	11842
	2%	3%	5%	3%	6%	3%
grade 6 events	4113	4044	83330	4803	68788	21014
	1%	1%	28%	1%	24%	6%
grade 7 events	225299	207907	126869	211231	100992	216701
	86%	87%	44%	85%	36%	67%

2.2 Compared Parameters

Parameter	Planned	Actual	Parameter	Planned	Actual
Instrument	ACIS	ACIS	Obspar format version number	6	6
Detector	ACIS-235678	ACIS-235678	Obspar file type	PREDICTED	ACTUAL
Grating	NONE	NONE	Obspar update status	NONE	UPDATED
Data mode	VFAINT	VFAINT	Number of optional ACIS chips dropped	0	0
Observation mode	POINTING	POINTING	On-chip summing requested	N	N
Pointing RA	16.300698	16.32360645305267	Subarray requested	NONE	NONE
Pointing Dec	-72.396402	-72.37007378303423	Alternating exposures requested	N	N
Pointing Roll	44.327058	44.50553125534567	Primary exposure time	0.000000	3.2
SIM focus pos (mm)	-0.684267	-0.6828225247311905			
SIM defocus (mm)	0	0.001444936568705701			
SIM translation stage pos (mm)	-190.132523	-190.1425803651734			
SIM translation stage offset (mm)	0	0.01005778216563158			
Observation start time	146809375.184000	146808263.57464			
Observation start date	2002-08-27T04:21:51	2002-08-27T04:04:23			
Observation end time	146858675.184000	146859324.97674			
Observation end date	2002-08-27T18:03:31	2002-08-27T18:15:24			
Read mode	TIMED	TIMED			

2.3 Aspect



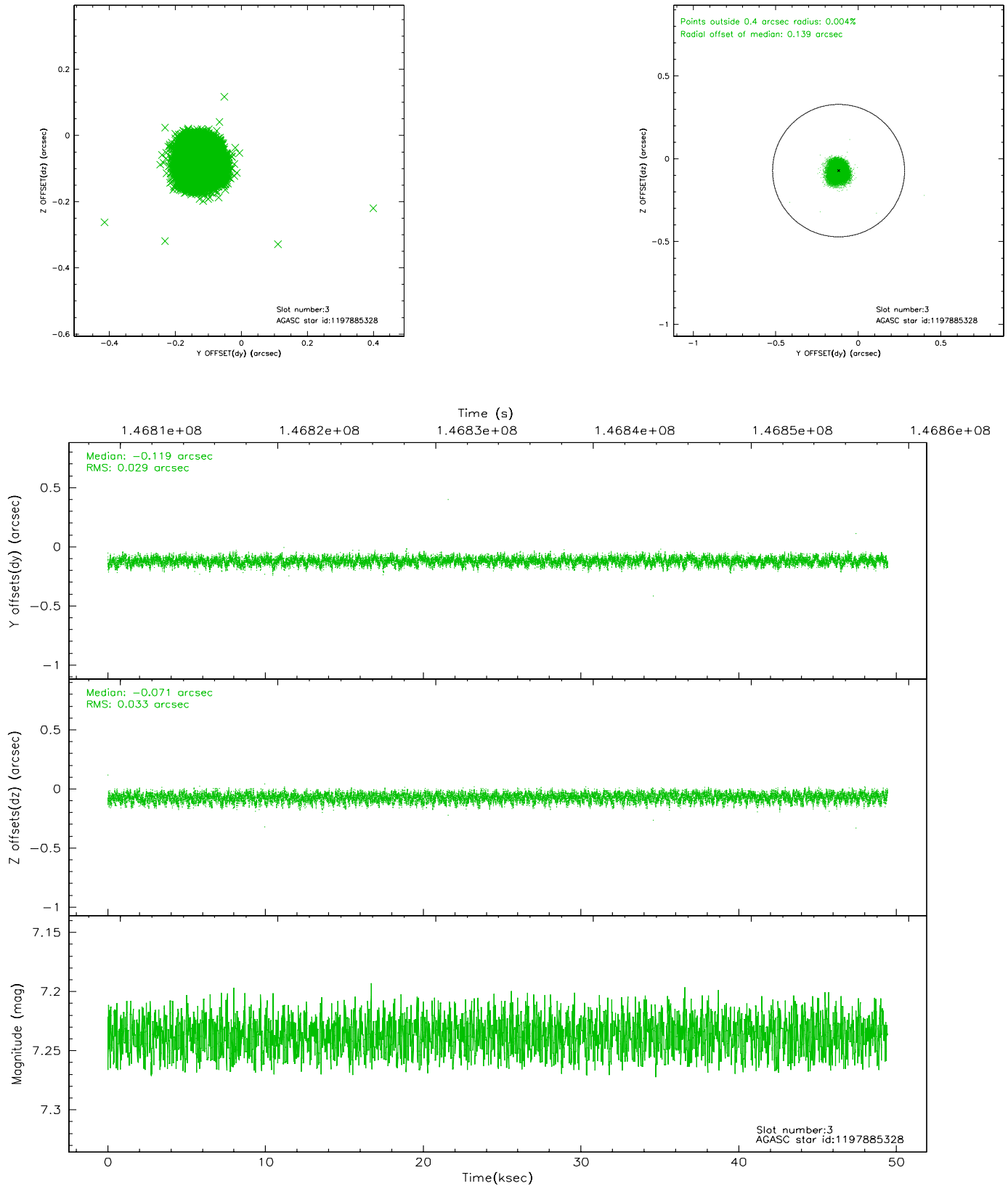


Slot Statistics

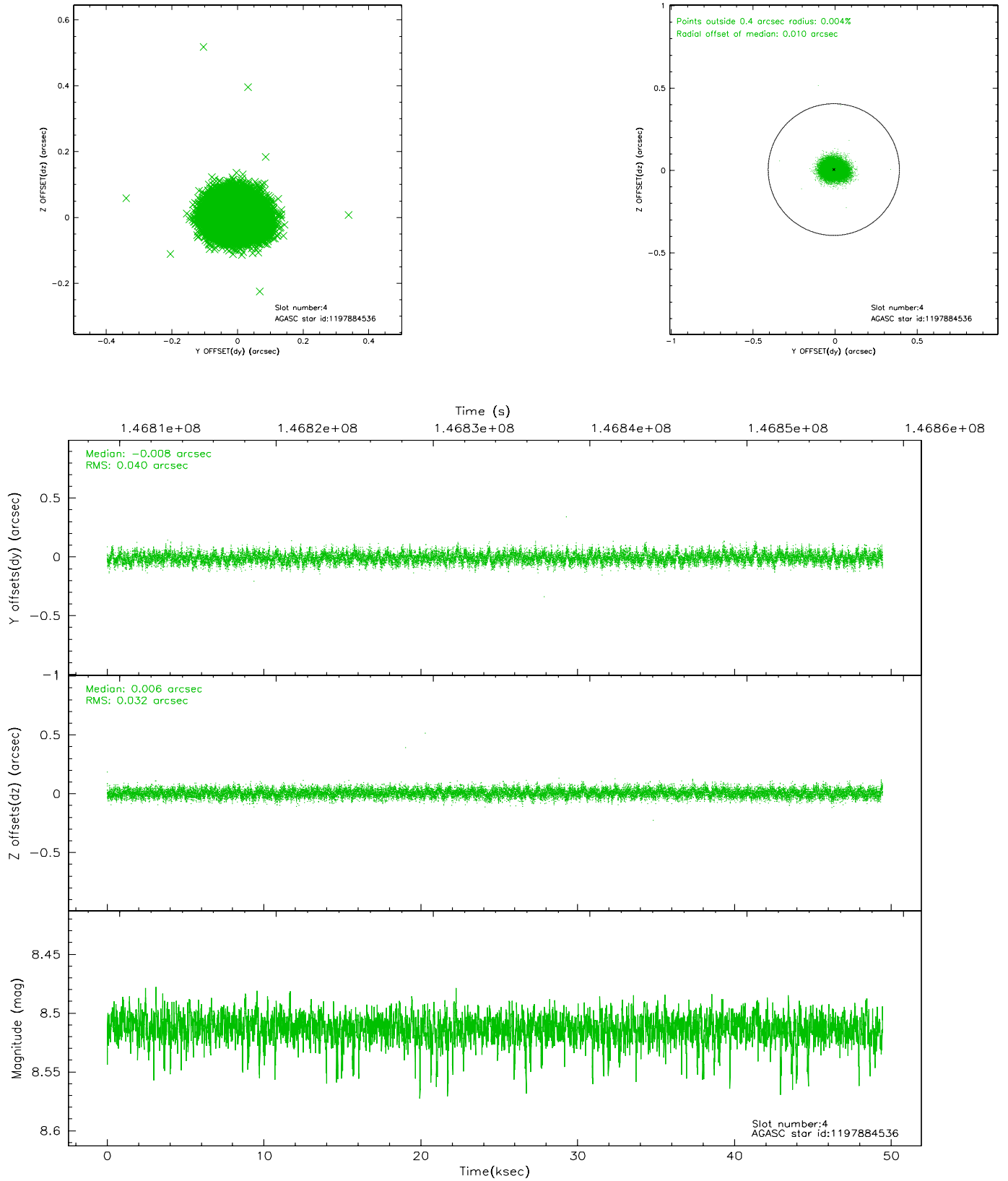
slot	status	id	mag	n_pts	med_dy	med_dz	dr1	dr2	ra	dec	mean_y	mean_z
0	FID	ACIS-S-2	7.11	12064	-0.003	0.026	0.009	0.014	0.000000	0.000000	-755.49	-1728.53
1	FID	ACIS-S-4	7.20	12065	-0.061	-0.006	0.012	0.019	0.000000	0.000000	2157.74	179.93
2	FID	ACIS-S-5	7.24	12065	0.032	-0.012	0.009	0.014	0.000000	0.000000	-1808.31	173.58
3	GUIDE	1197885328	7.24	24128	-0.119	-0.071	0.047	0.075	16.283090	-71.733943	1652.49	1720.20
4	GUIDE	1197884536	8.51	24126	-0.008	0.006	0.054	0.088	17.160729	-71.835289	2097.40	766.26
5	GUIDE	1197884712	8.30	24124	-0.012	-0.031	0.067	0.105	16.087398	-72.252690	194.08	533.58
6	GUIDE	1198282744	9.01	24126	0.016	0.066	0.085	0.138	17.028326	-73.013356	-1007.21	-2126.77
7	GUIDE	1197749664	9.58	24109	0.121	0.025	0.090	0.145	15.809015	-72.366369	-309.20	450.55

2.4 Star Slots

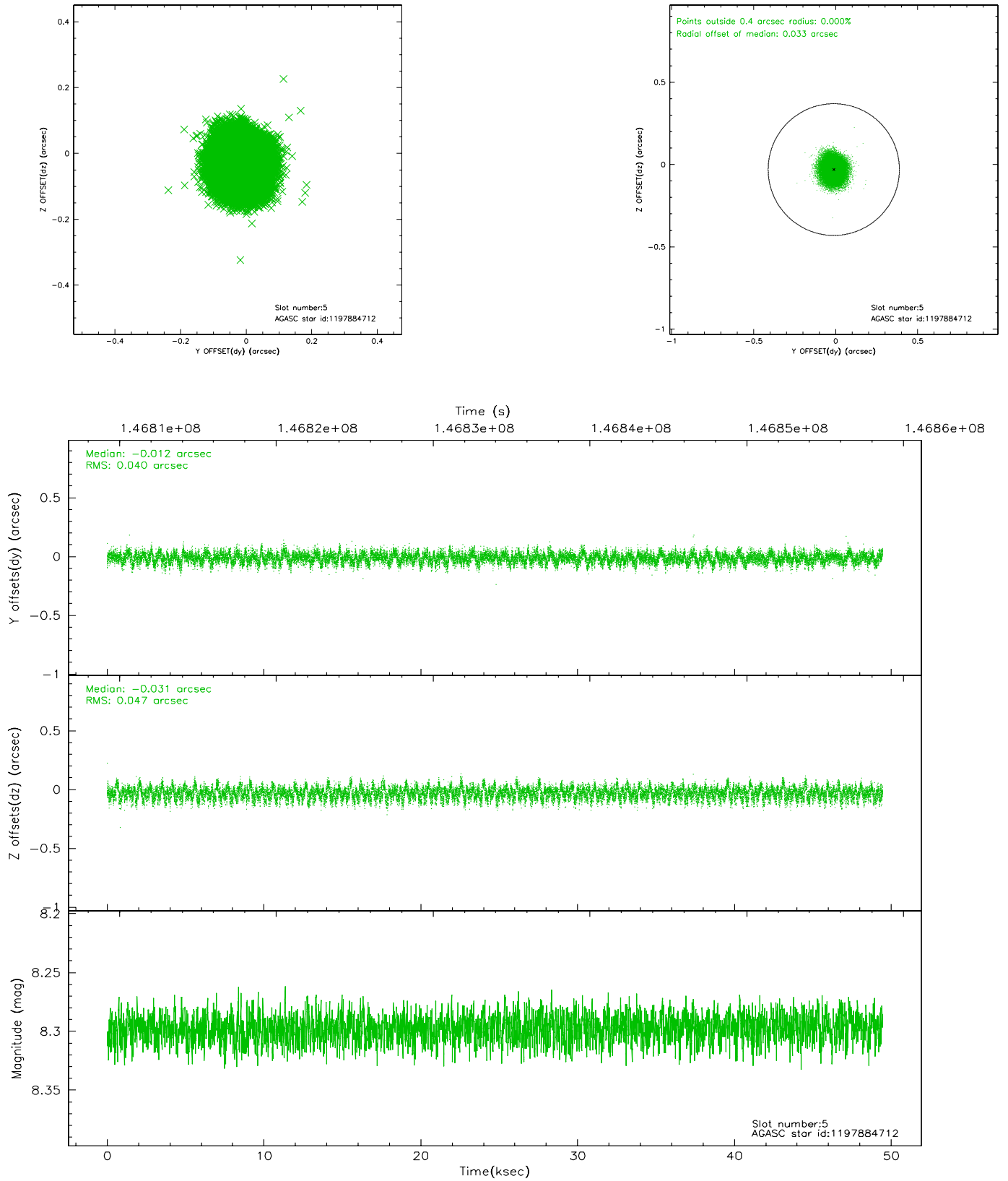
2.4.1 Slot 3



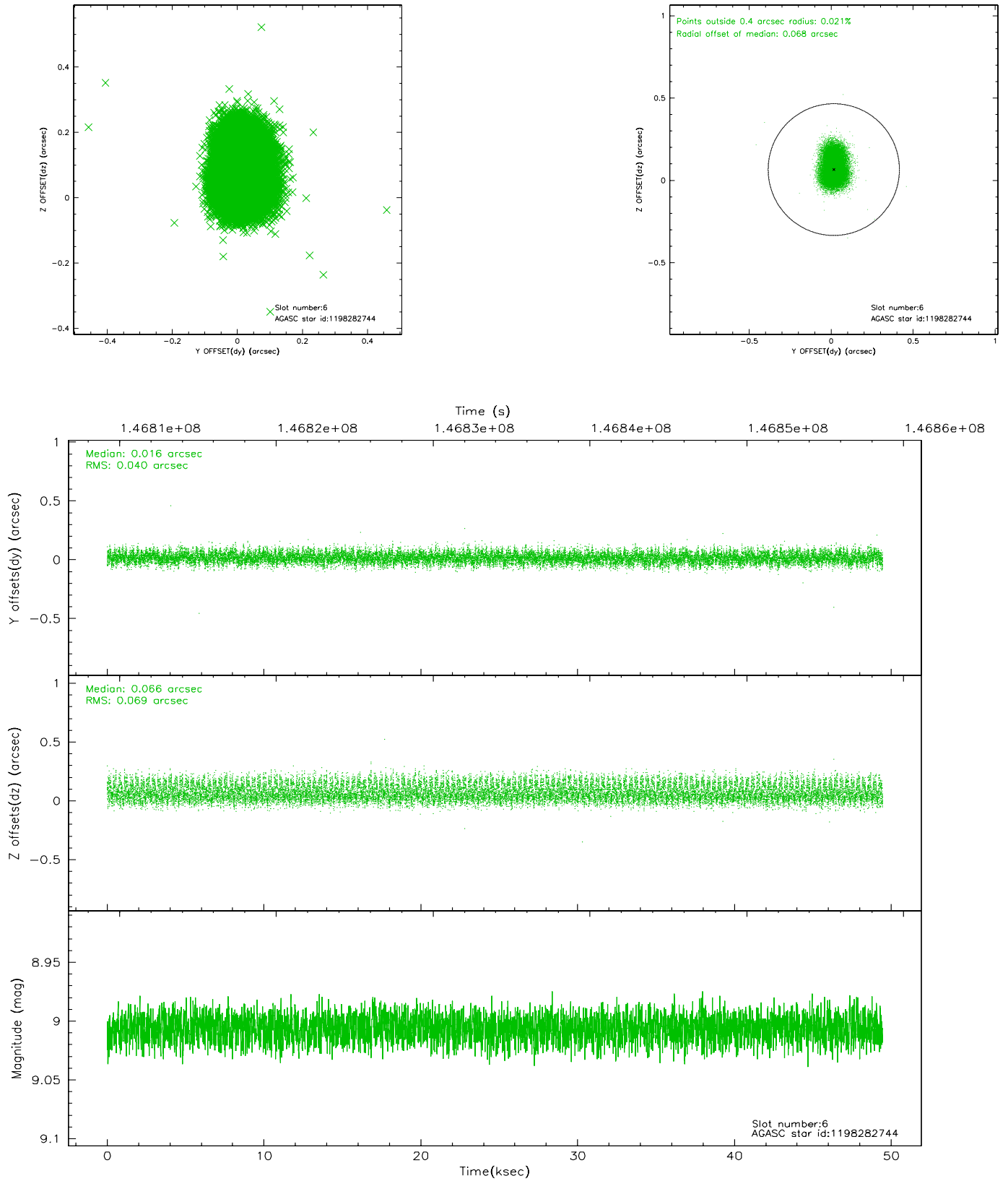
2.4.2 Slot 4



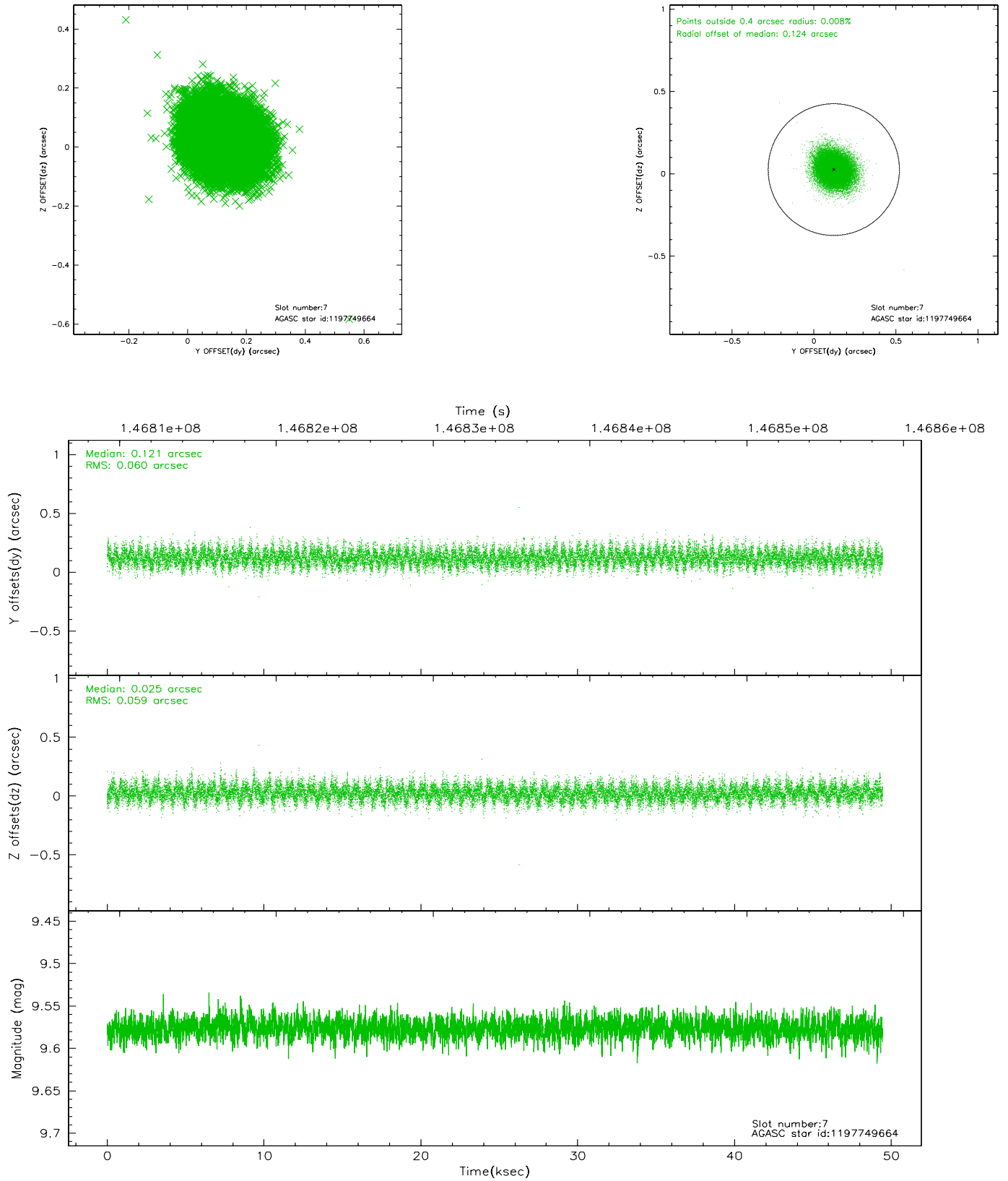
2.4.3 Slot 5



2.4.4 Slot 6

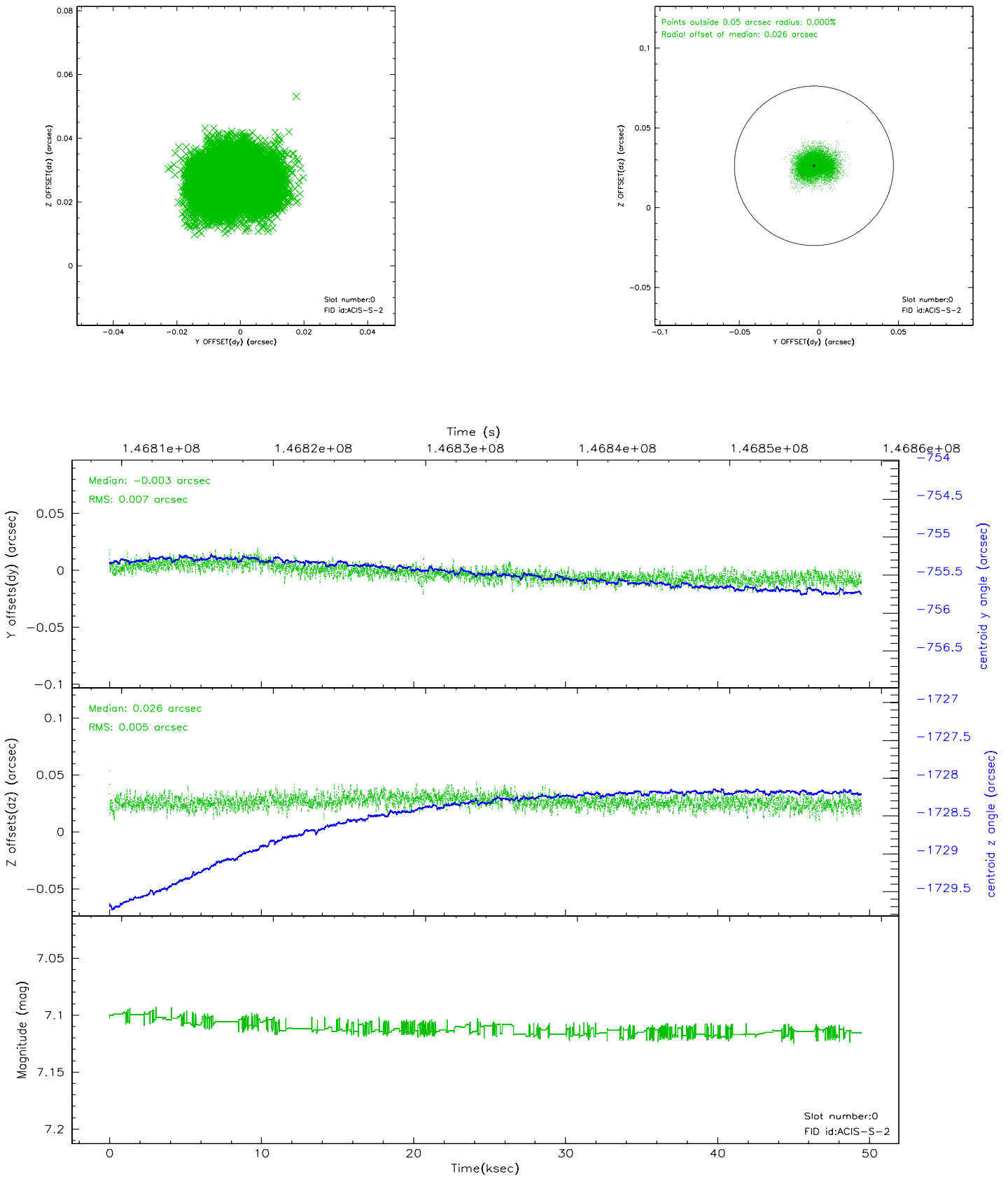


2.4.5 Slot 7

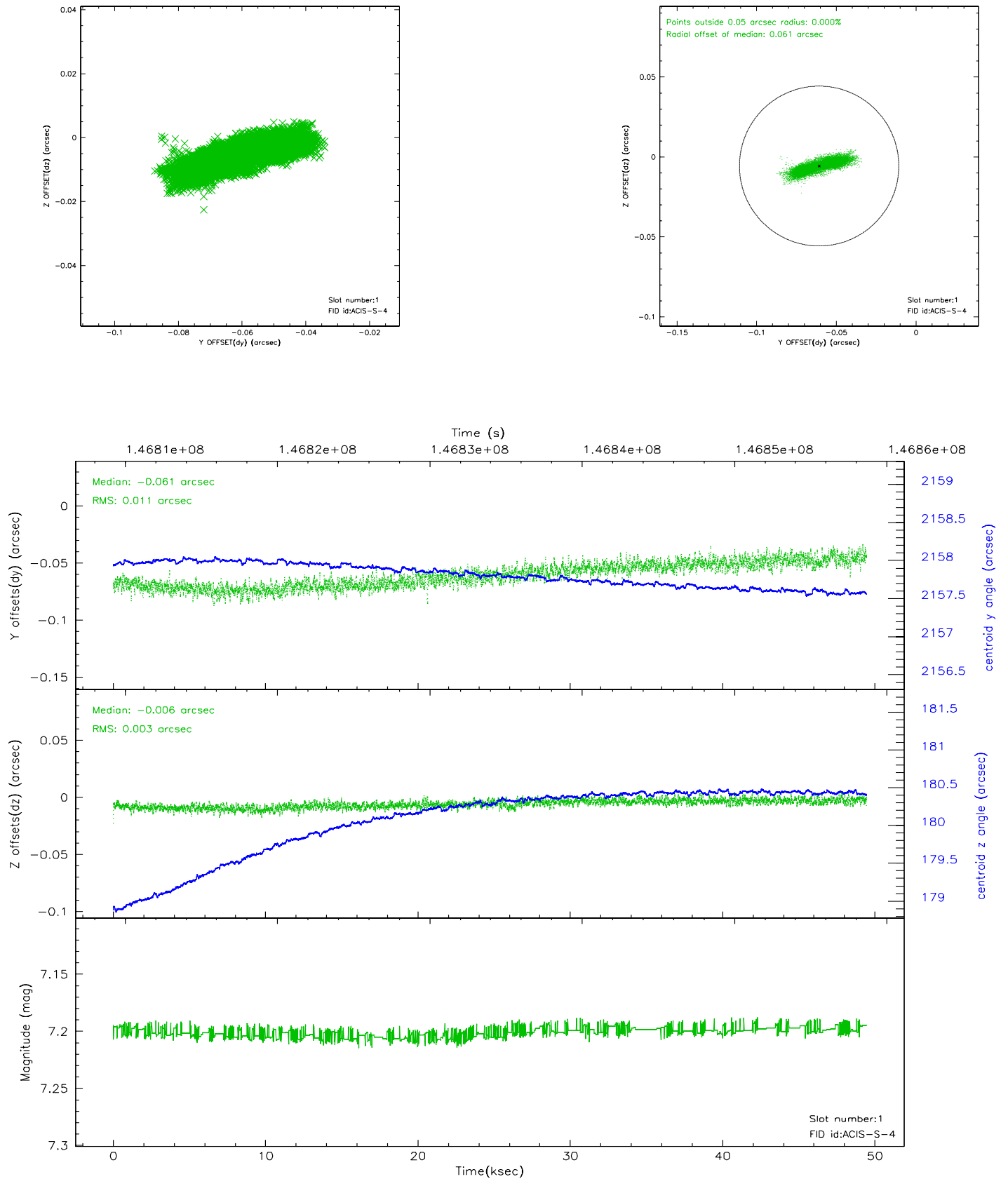


2.5 FID Slots

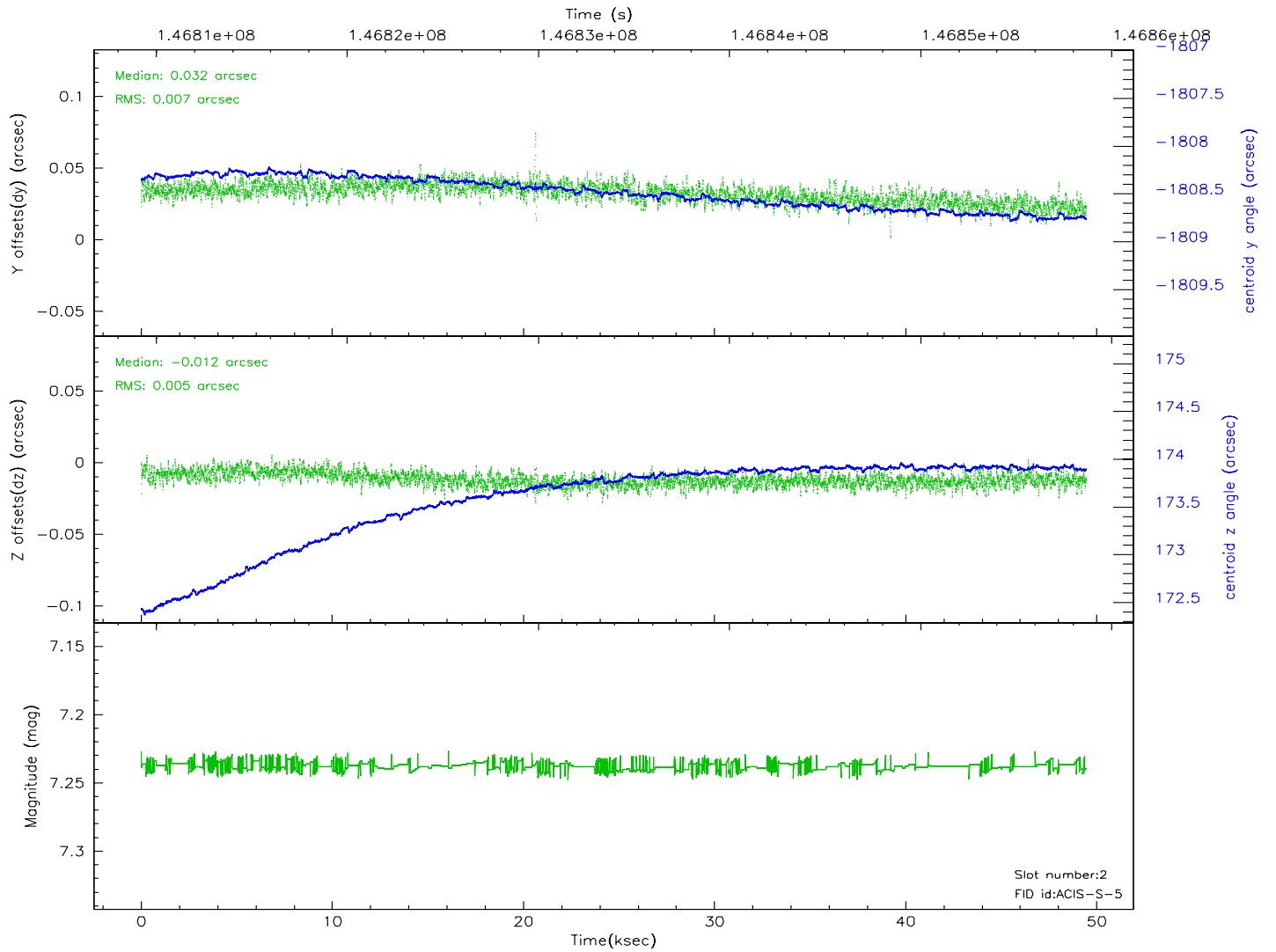
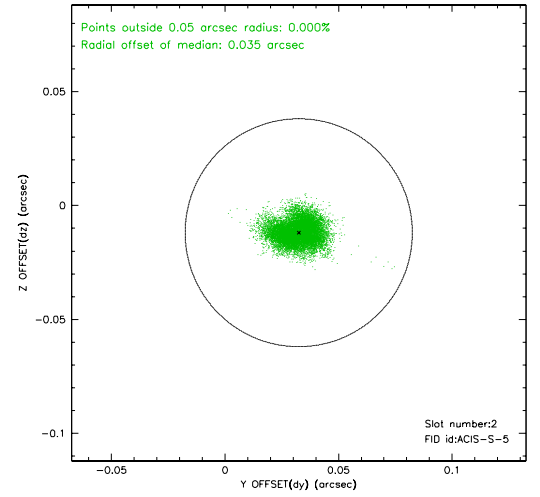
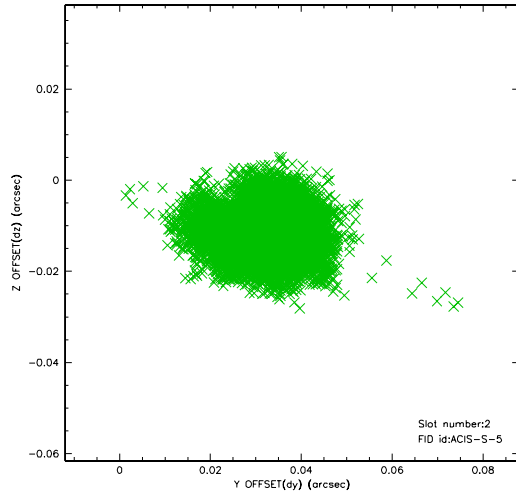
2.5.1 Slot 0



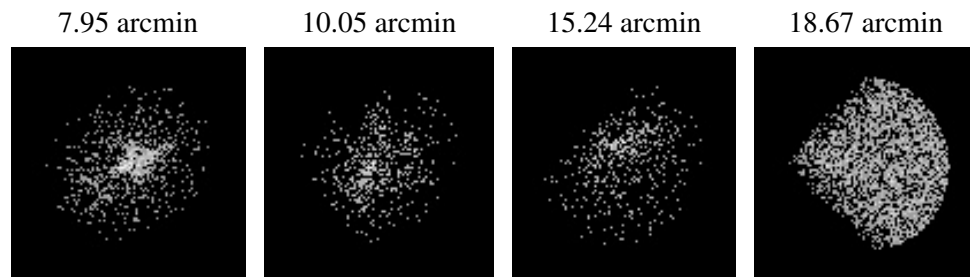
2.5.2 Slot 1



2.5.3 Slot 2



3 Point Sources



A Summary

A.1 Status

V&V Scientist	Jen Lauer
V&V Date (YYYY-MM-DD)	2006.09.29
V&V Edition	1
V&V Disposition and Status	OK
V&V Charge Time	49.455

A.2 Comments