

# V&V Reference Report

## L2 ASCDS Version : 8.4.5

Observation 2578 - L2 Version 3  
Chandra X-Ray Center

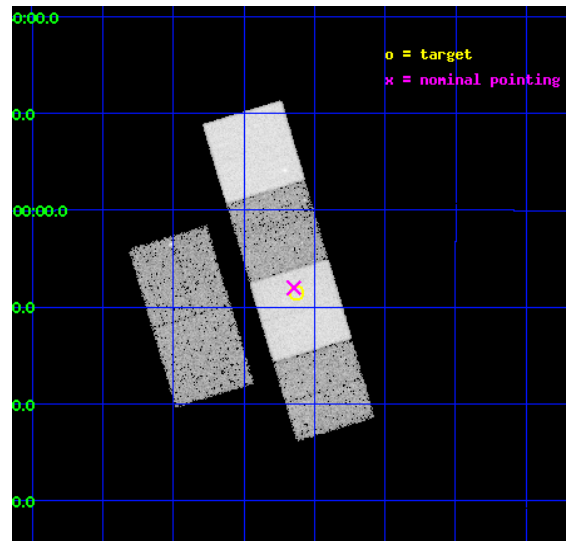
L2 Processing Date : Oct 21 2012

## Contents

<b>1</b>	<b>Front</b>	<b>2</b>
<b>2</b>	<b>OBI</b>	<b>3</b>
2.1	OBI . . . . .	3
2.1.1	Images . . . . .	3
2.1.2	Bias . . . . .	3
2.1.3	Parameters . . . . .	4
2.1.4	Events . . . . .	4
2.2	Compared Parameters . . . . .	5
2.3	Aspect . . . . .	6
2.4	Star Slots . . . . .	9
2.4.1	Slot 3 . . . . .	9
2.4.2	Slot 4 . . . . .	10
2.4.3	Slot 5 . . . . .	11
2.4.4	Slot 6 . . . . .	12
2.4.5	Slot 7 . . . . .	13
2.5	FID Slots . . . . .	14
2.5.1	Slot 0 . . . . .	14
2.5.2	Slot 1 . . . . .	15
2.5.3	Slot 2 . . . . .	16
<b>A</b>	<b>Summary</b>	<b>17</b>
A.1	Status . . . . .	17
A.2	Comments . . . . .	17

# 1 Front

seq_num	200186	Sequence number
obs_id	2578	Observation id
title	INVESTIGATING COLLIDING WINDS AND MAGNETISED STARS IN YOUNG PLANETARY NEBULAE IMAGED WITH HST	Proposal title
observer	Dr. Raghvendra Sahai	Principal investigator
object	M 2-9	Source name
dtcycle	0	&#160
cycle	P	events from which exps? Prim/Second/Both
ra_targ	256.407083	Observer's specified target RA [deg]
dec_targ	-10.142361	Observer's specified target Dec [deg]
ra_nom	256.41153136678	Nominal RA [deg]
dec_nom	-10.133742294843	Nominal Dec [deg]
roll_nom	73.259559040609	Nominal Roll [deg]
revision	3	Processing version of data
ontime	19883.780166477	Sum of GTIs [s]
livetime	19631.999769434	Livetime [s]
ontime2	19883.82120648	Sum of GTIs [s]
ontime3	19880.416086227	Sum of GTIs [s]
ontime5	19880.498166174	Sum of GTIs [s]
ontime6	19883.69808647	Sum of GTIs [s]
ontime7	19883.780166477	Sum of GTIs [s]
ontime8	19883.616006494	Sum of GTIs [s]
l2events	223481	Number of level 2 events

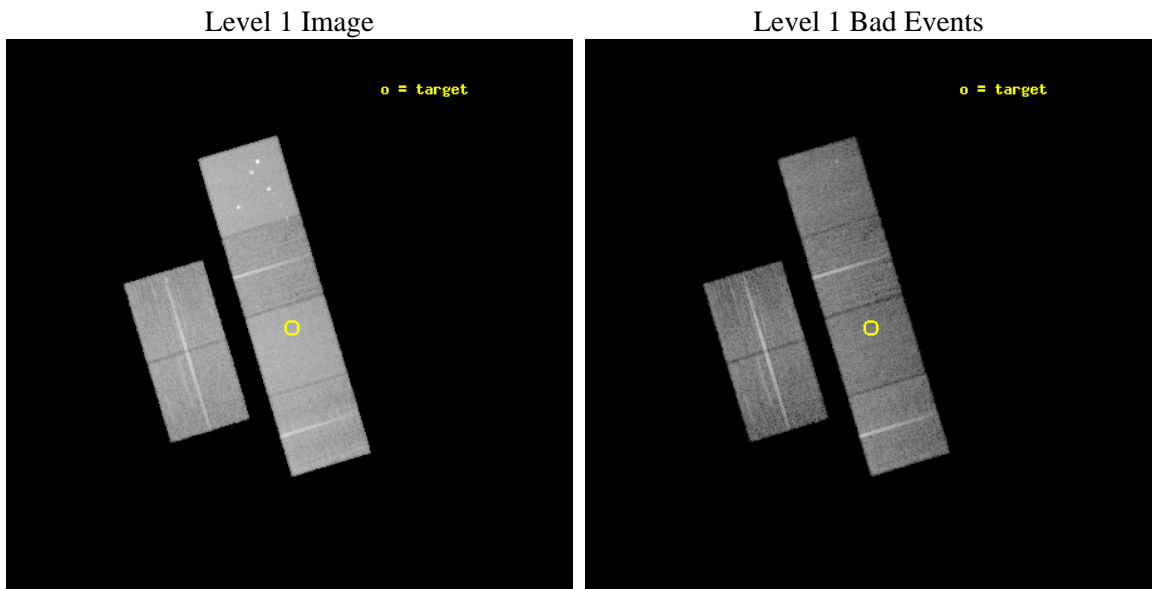




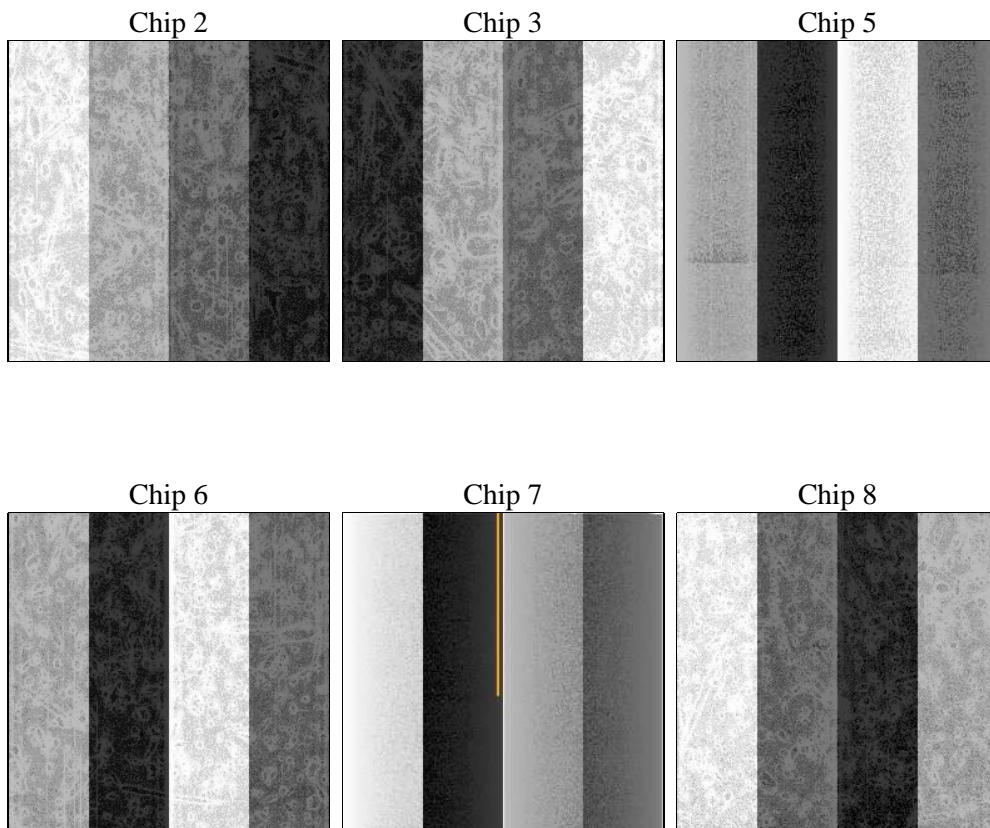
## 2 OBI

### 2.1 OBI

#### 2.1.1 Images



#### 2.1.2 Bias



### 2.1.3 Parameters

obi_num	2	Obi number	sched_exp_time	20000.000000	[s] Scheduled observation exposure time
ascdsver	8.4.5	Processing system revision	ontime	19883.780166477	Sum of GTIs [s]
caldsver	4.5.2	&#160	ontime2	19883.82120648	Sum of GTIs [s]
date	2012-10-21T05:38:23	Date and time of file creation	ontime3	19880.416086227	Sum of GTIs [s]
revision	3	Processing version of data	ontime5	19880.498166174	Sum of GTIs [s]
			ontime6	19883.69808647	Sum of GTIs [s]
			ontime7	19883.780166477	Sum of GTIs [s]
			ontime8	19883.616006494	Sum of GTIs [s]
			l1events	894821	Number of level 1 events

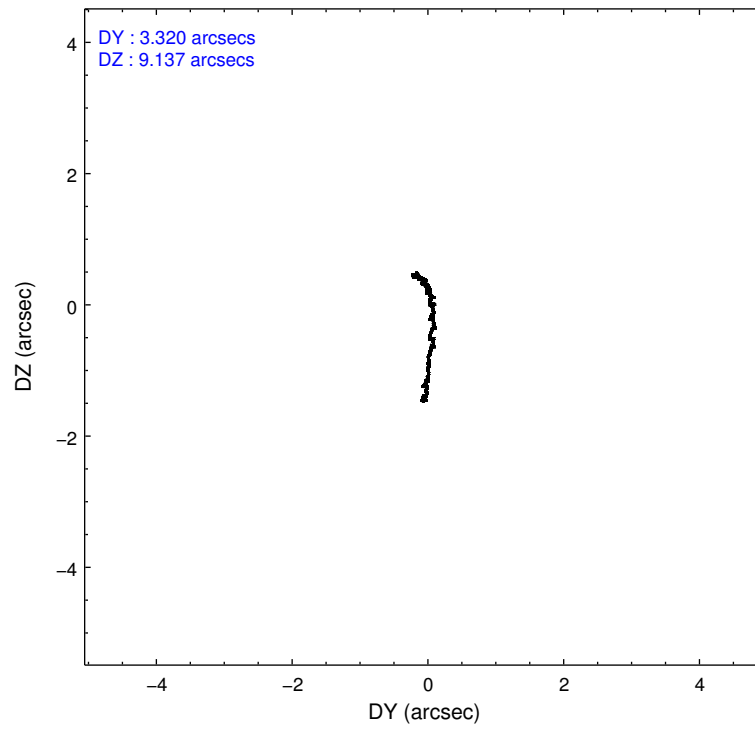
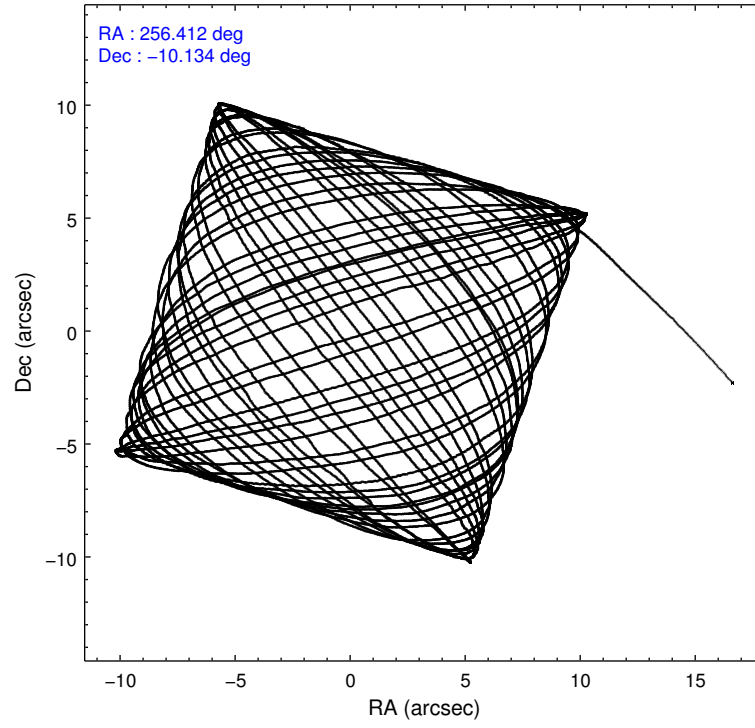
### 2.1.4 Events

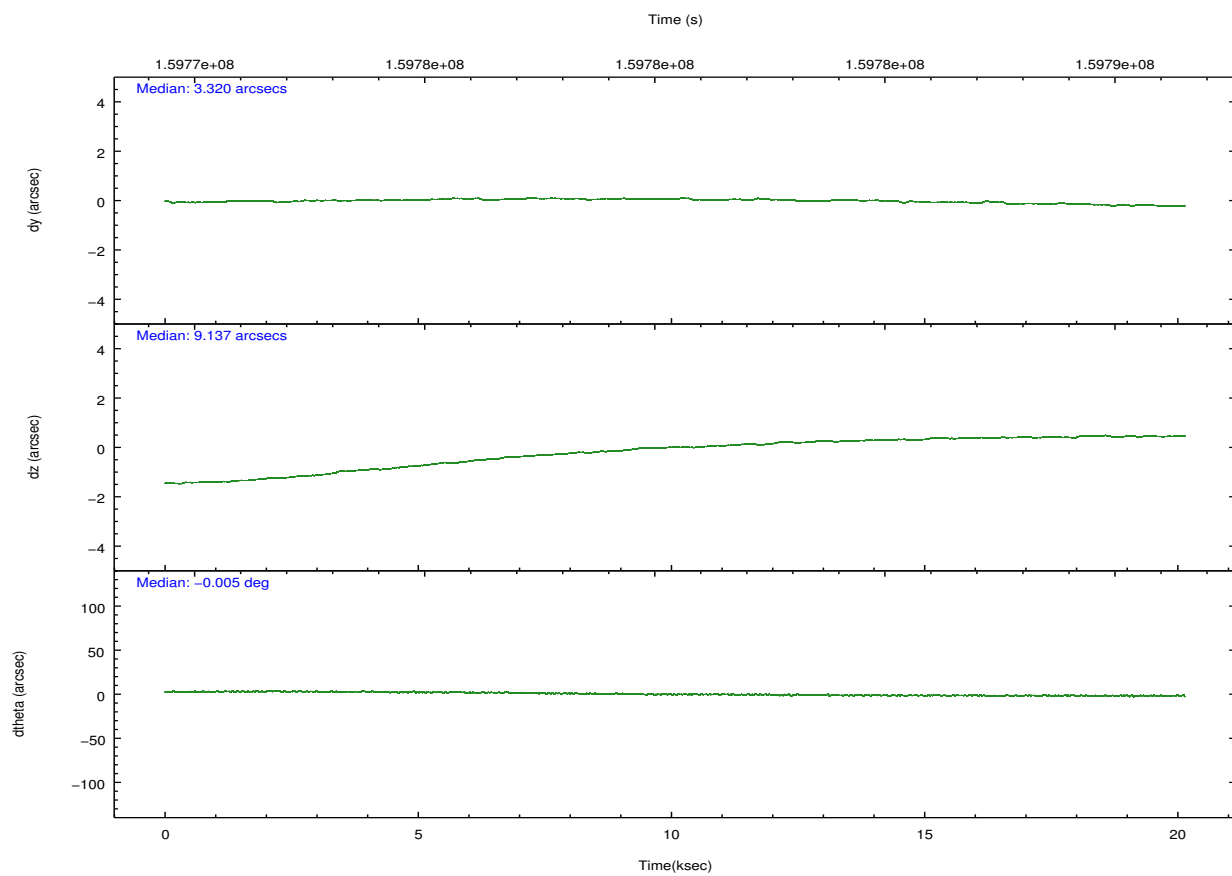
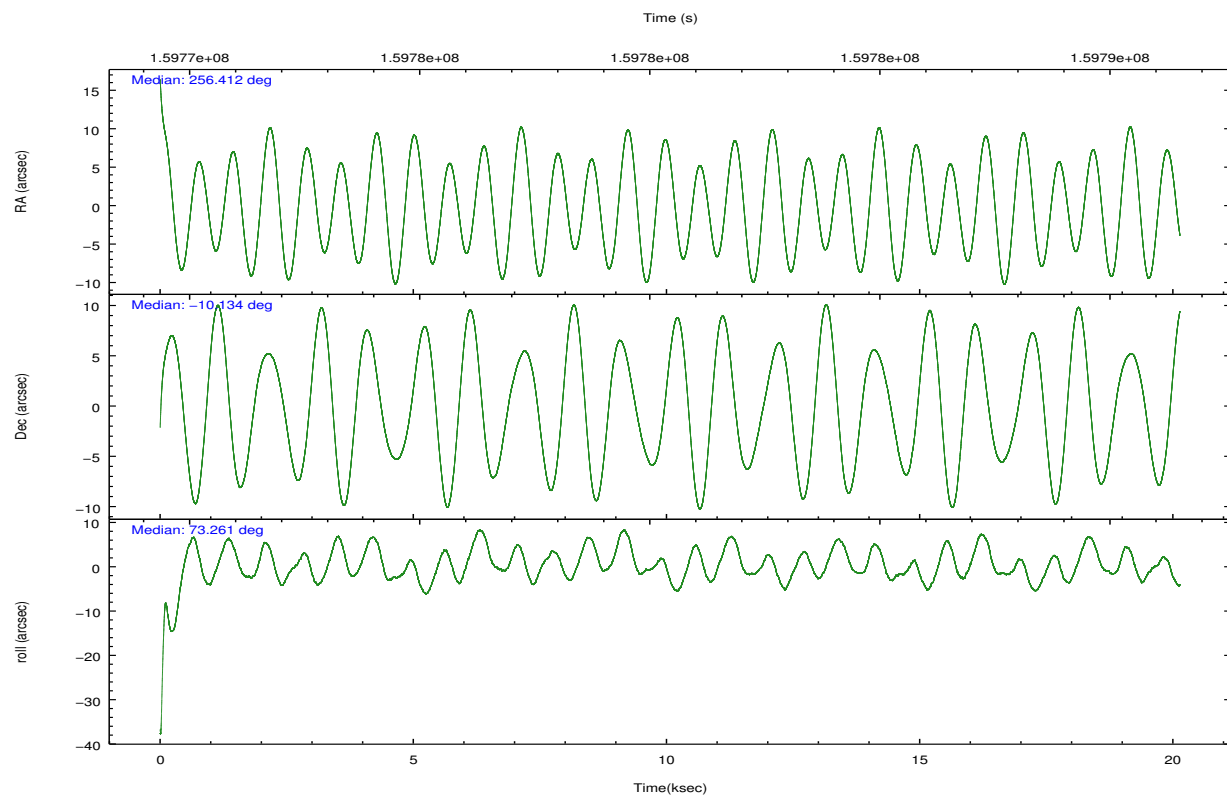
	ccd 2	ccd 3	ccd 5	ccd 6	ccd 7	ccd 8		ccd 2	ccd 3	ccd 5	ccd 6	ccd 7	ccd 8
level 1 events	126035	118744	199051	121751	175941	153299	grade 0 events	7069	6462	16199	6915	7781	11230
rejected events	110850	104399	97507	106089	95243	120346		5%	5%	8%	5%	4%	7%
rejected %	87%	87%	48%	87%	54%	78%	grade 1 events	61	60	457	53	135	112
								0%	0%	0%	0%	0%	0%
							grade 2 events	2997	2663	28626	3041	15161	6968
								2%	2%	14%	2%	8%	4%
							grade 3 events	1376	1448	4186	1469	6910	3390
								1%	1%	2%	1%	3%	2%
							grade 4 events	1352	1326	4041	1455	7006	3179
								1%	1%	2%	1%	3%	2%
							grade 5 events	4652	5203	13210	5557	15369	7023
								3%	4%	6%	4%	8%	4%
							grade 6 events	2395	2451	48518	2785	43876	8213
								1%	2%	24%	2%	24%	5%
							grade 7 events	106133	99131	83814	100476	79703	113184
								84%	83%	42%	82%	45%	73%

## 2.2 Compared Parameters

Parameter	Planned	Actual	Parameter	Planned	Actual
Instrument	ACIS	ACIS	Obspar format version number	7	7
Detector	ACIS-235678	ACIS-235678	Obspar file type	PREDICTED	ACTUAL
Grating	NONE	NONE	Obspar update status	NONE	UPDATED
Data mode	FAINT	FAINT	Number of optional ACIS chips dropped	0	0
Observation mode	POINTING	POINTING	On-chip summing requested	N	N
[deg] Pointing RA	256.418224	256.41153136678	Subarray requested	NONE	NONE
[deg] Pointing Dec	-10.160153	-10.13374229484324	Alternating exposures requested	N	N
[deg] Pointing Roll	73.104134	73.25955904060936	[s] Primary exposure time	0.000000	3.2
[mm] SIM focus pos	-0.684267	-0.6828225247311905			
[mm] SIM defocus	0	0.001444936568705701			
[mm] SIM translation stage pos	-190.132523	-190.1400660498719			
[mm] SIM translation stage offset	0	0.00754346686406393			
[s] Observation start time (MET)	159770508.184000	159769470.60108			
Observation start date	2003-01-24T04:40:44	2003-01-24T04:24:30			
[s] Observation end time (MET)	159790508.184000	159791416.877			
Observation end date	2003-01-24T10:14:04	2003-01-24T10:30:16			
Read mode	TIMED	TIMED			

## 2.3 Aspect



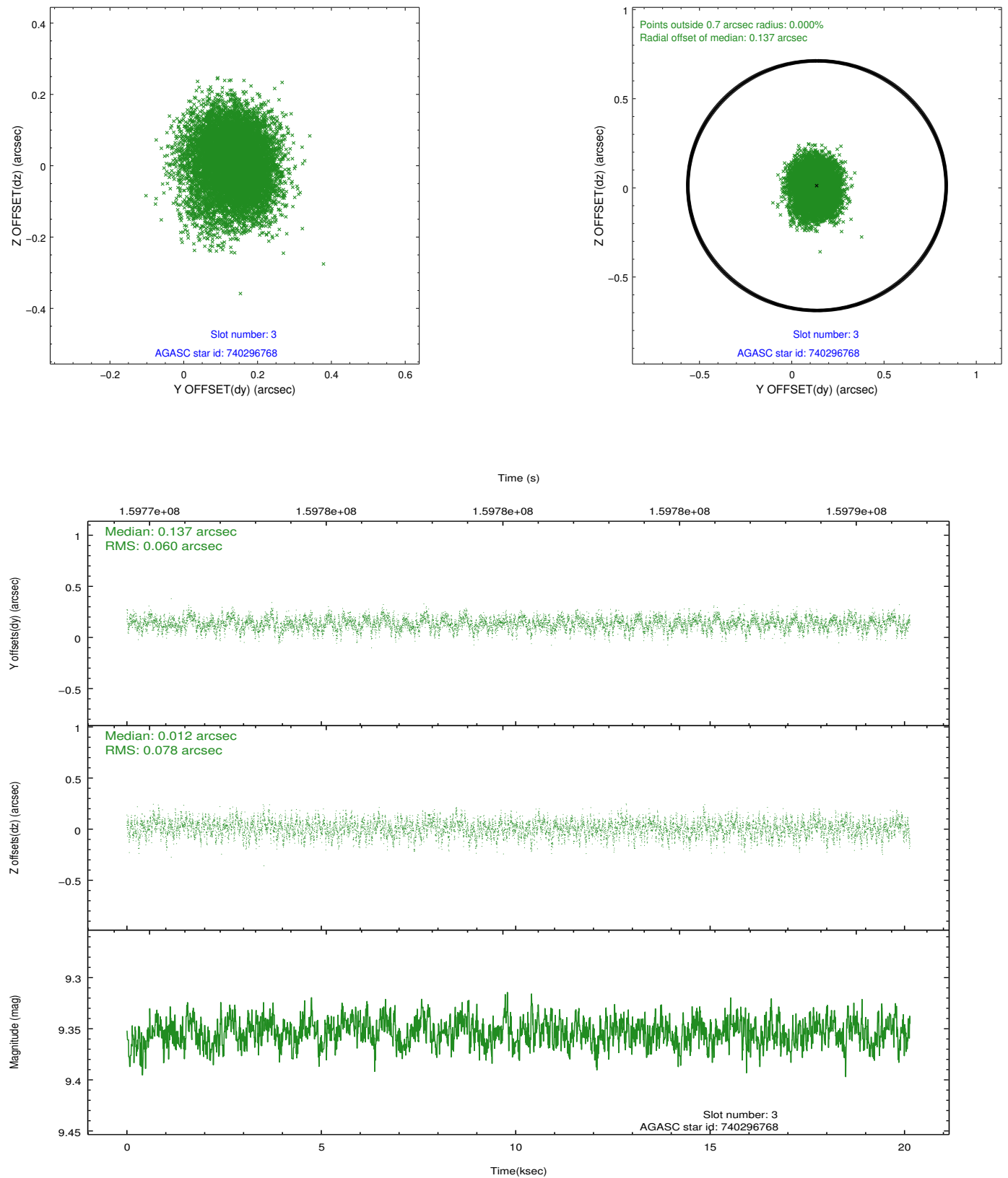


### Slot Statistics

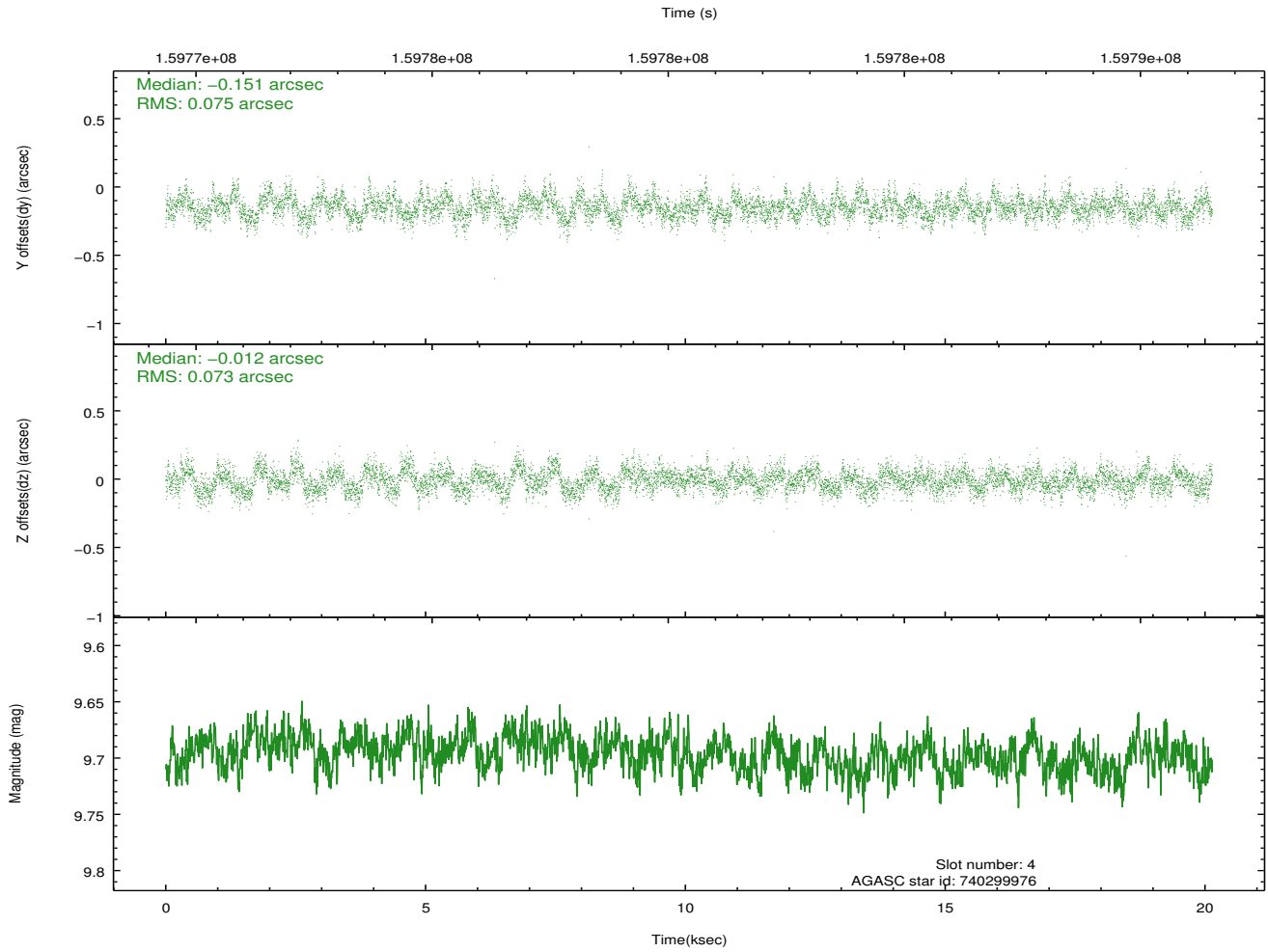
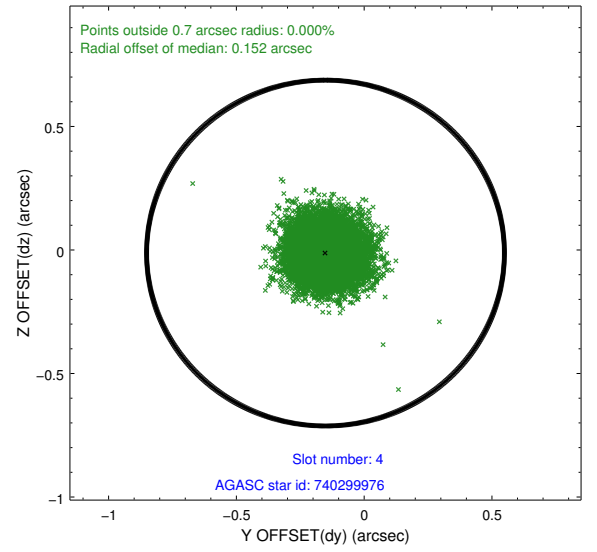
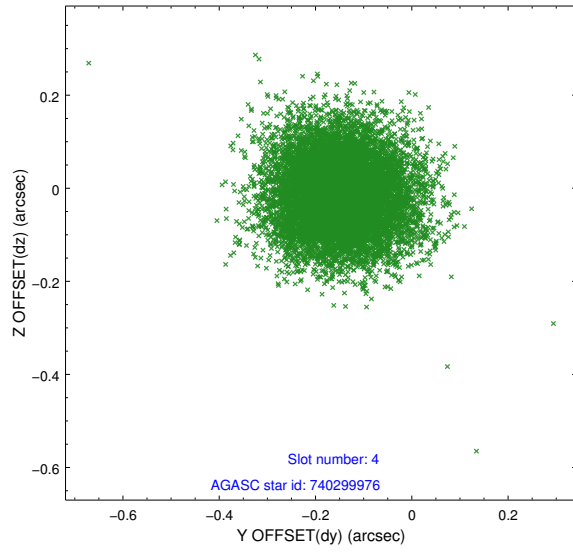
slot	status	id	mag	n_pts	med_dy	med_dz	dr1	dr2	ra	dec	mean_y	mean_z
0	FID	ACIS-S-2	7.11	4912	-0.037	-0.019	0.015	0.027	0.000000	0.000000	-755.97	-1730.16
1	FID	ACIS-S-4	7.20	4911	0.029	0.023	0.011	0.022	0.000000	0.000000	2157.27	178.20
2	FID	ACIS-S-5	7.24	4911	-0.027	0.007	0.013	0.022	0.000000	0.000000	-1808.58	172.03
3	GUIDE	740296768	9.35	9820	0.137	0.012	0.105	0.171	256.890301	-10.844838	-1873.98	-2313.55
4	GUIDE	740299976	9.70	9780	-0.151	-0.012	0.112	0.181	257.000751	-9.942252	1349.24	-1748.96
5	GUIDE	740303840	9.01	9821	0.159	0.043	0.074	0.126	256.674432	-10.568937	-1144.12	-1295.19
6	GUIDE	740306456	9.19	9818	0.002	-0.006	0.082	0.134	256.692253	-9.772946	1616.33	-525.05
7	GUIDE	740306640	8.45	9821	-0.145	-0.032	0.062	0.100	256.770514	-9.791631	1632.56	-810.27

## 2.4 Star Slots

### 2.4.1 Slot 3

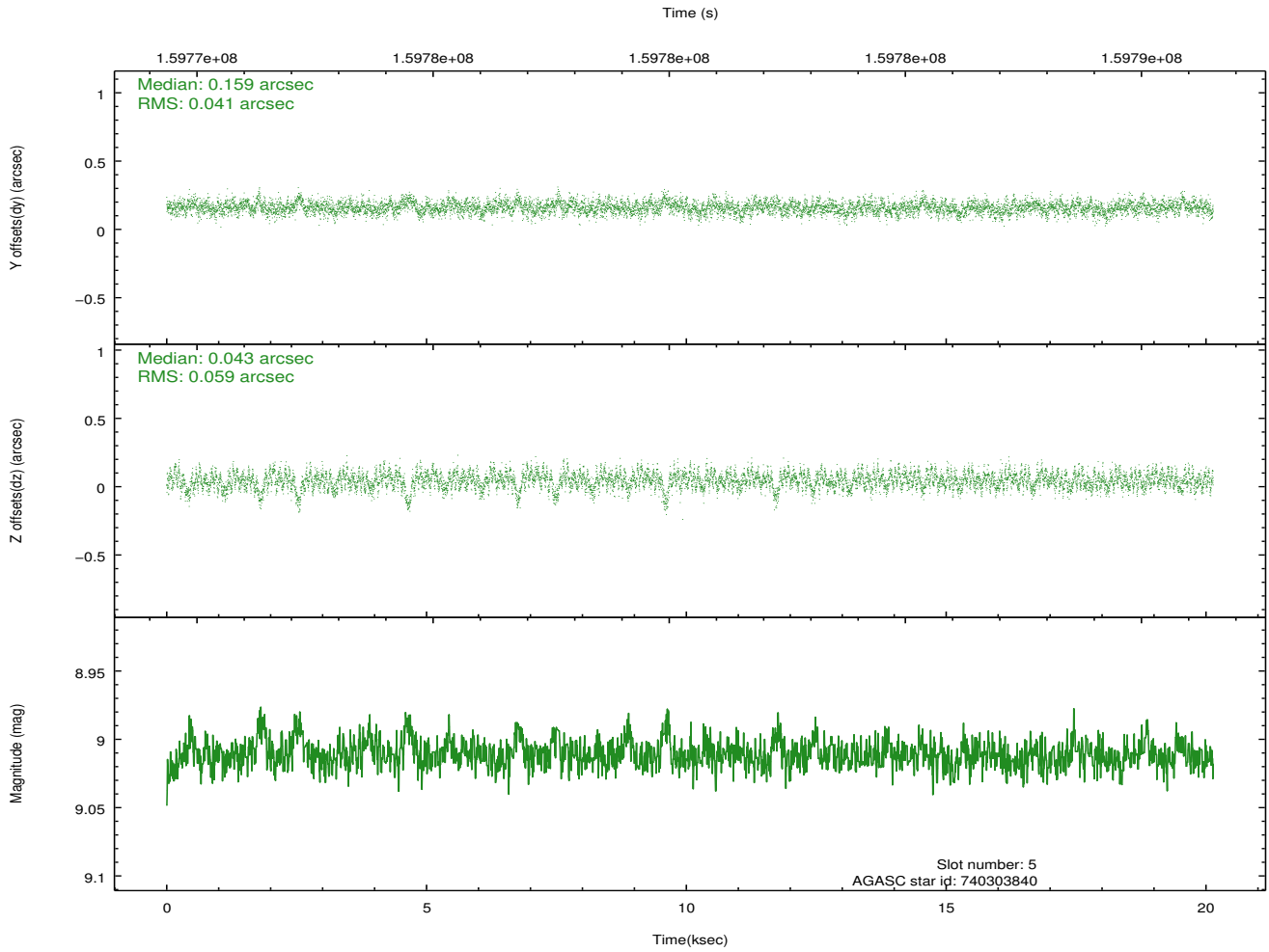
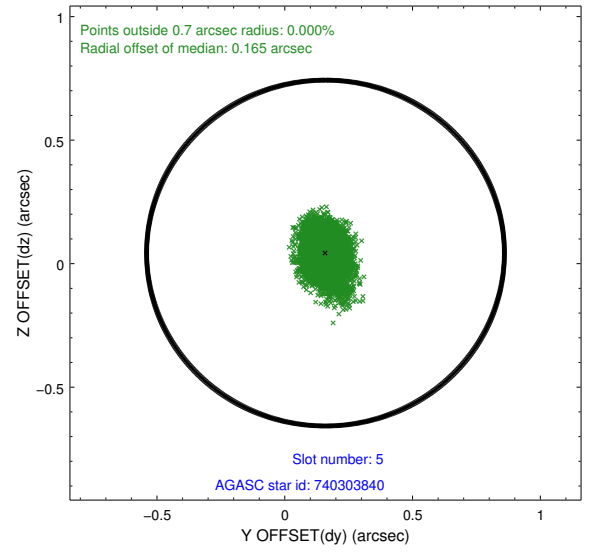
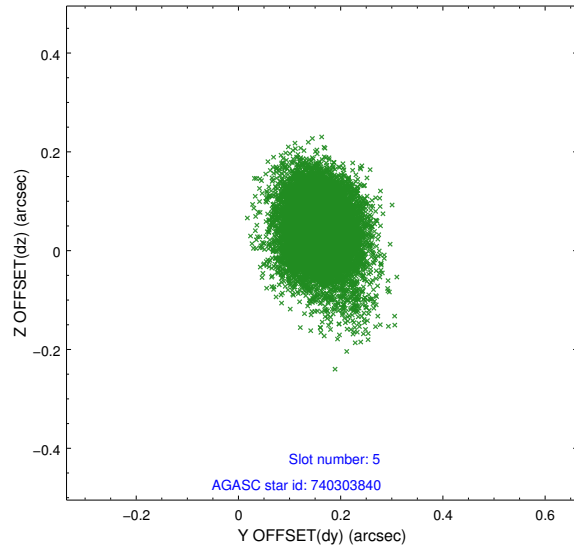


## 2.4.2 Slot 4

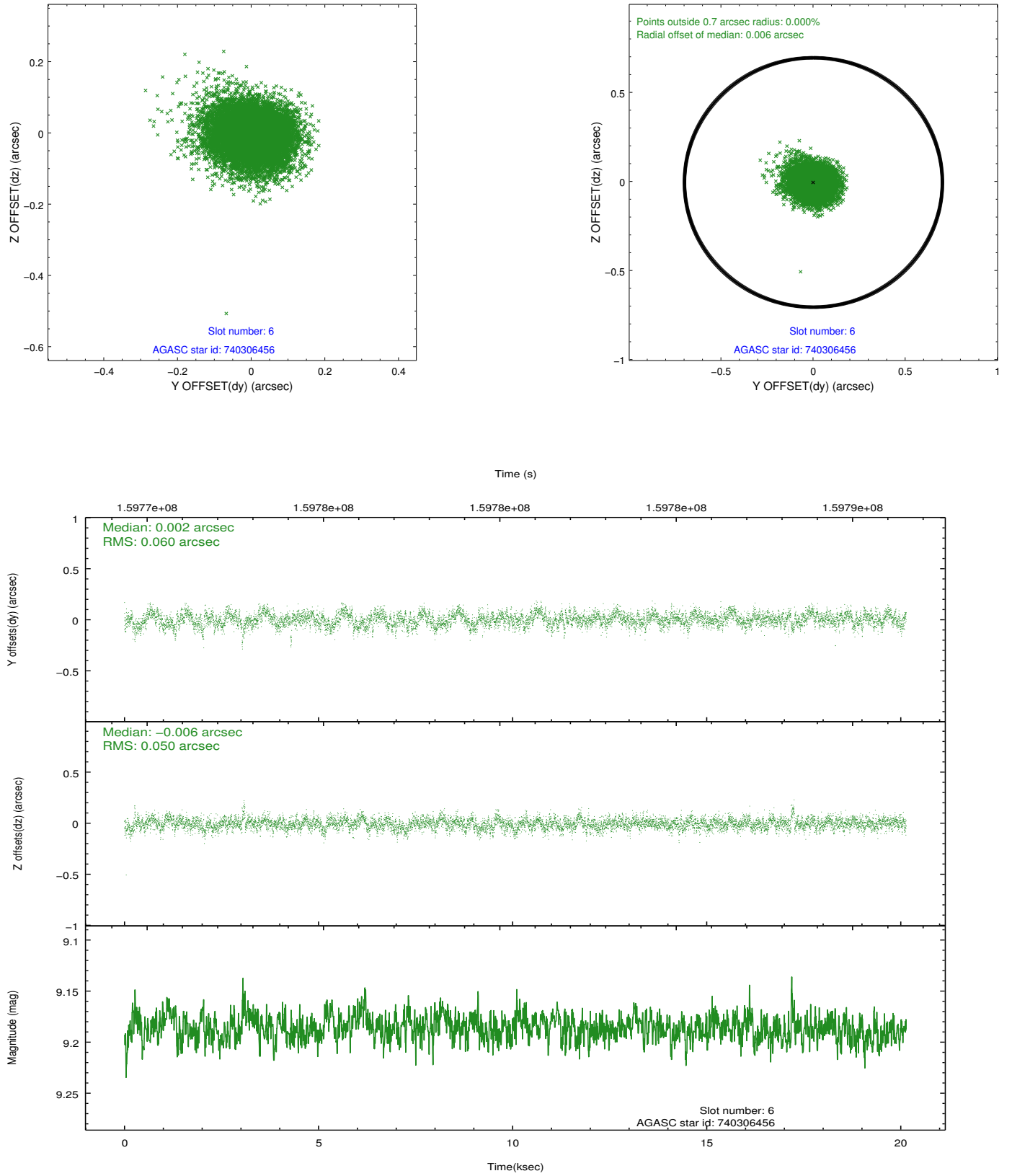




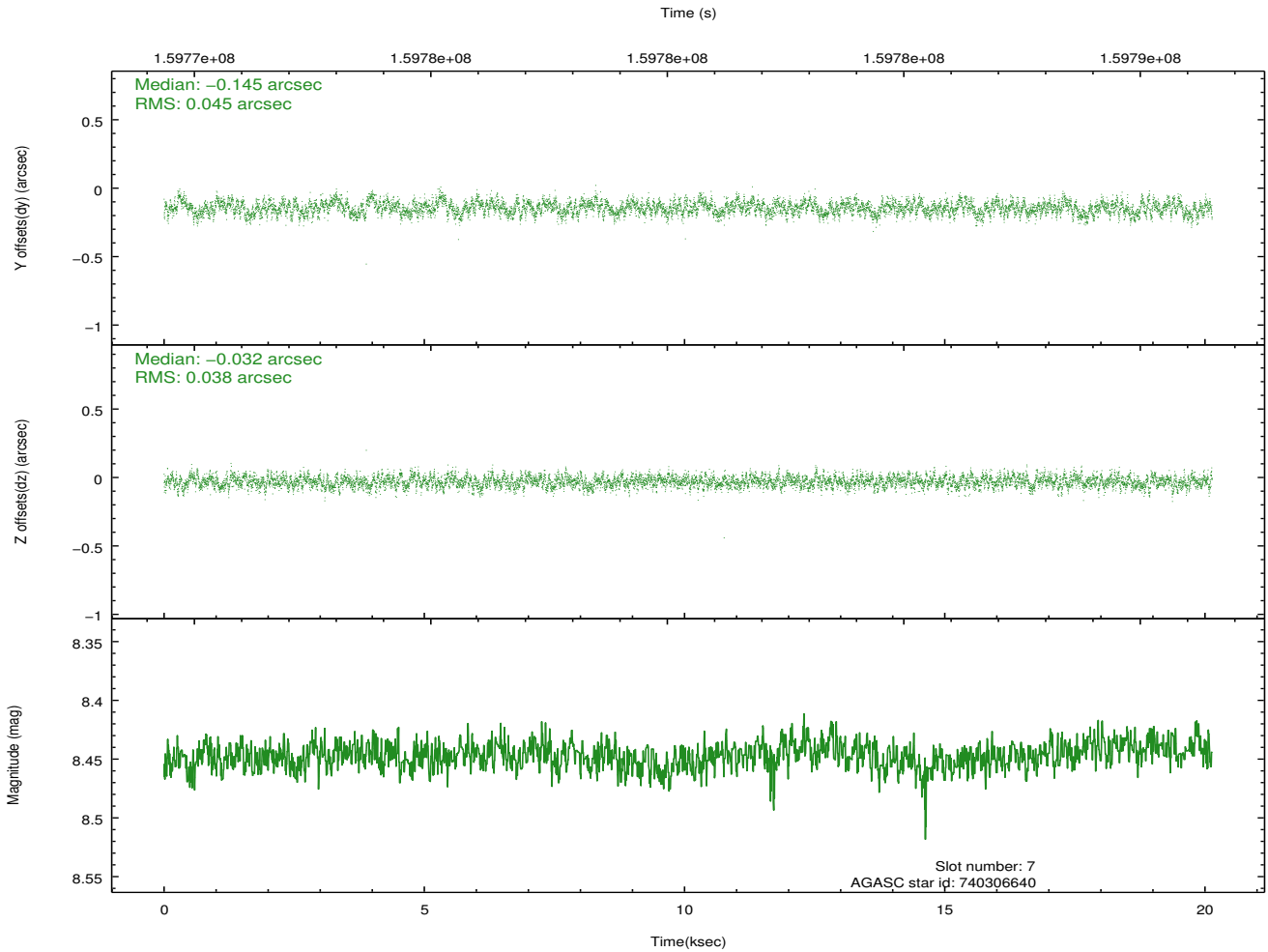
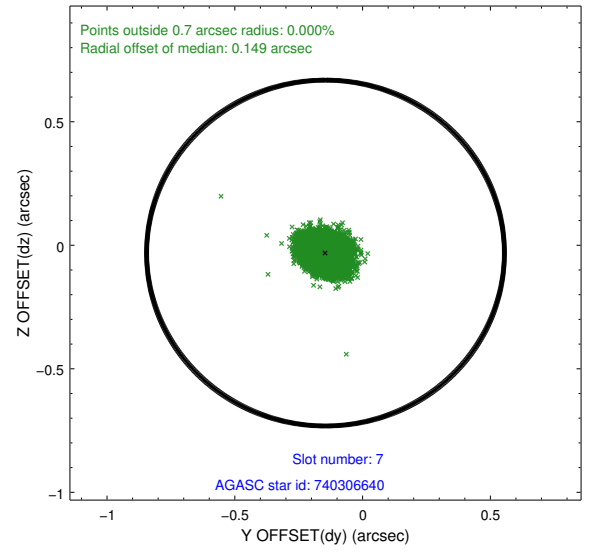
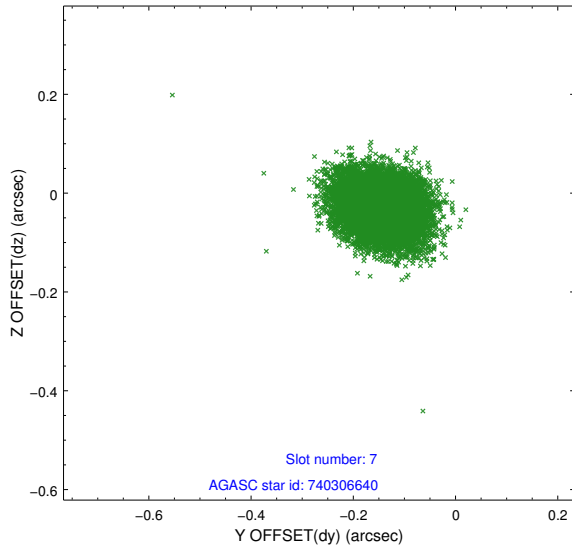
### 2.4.3 Slot 5



## 2.4.4 Slot 6

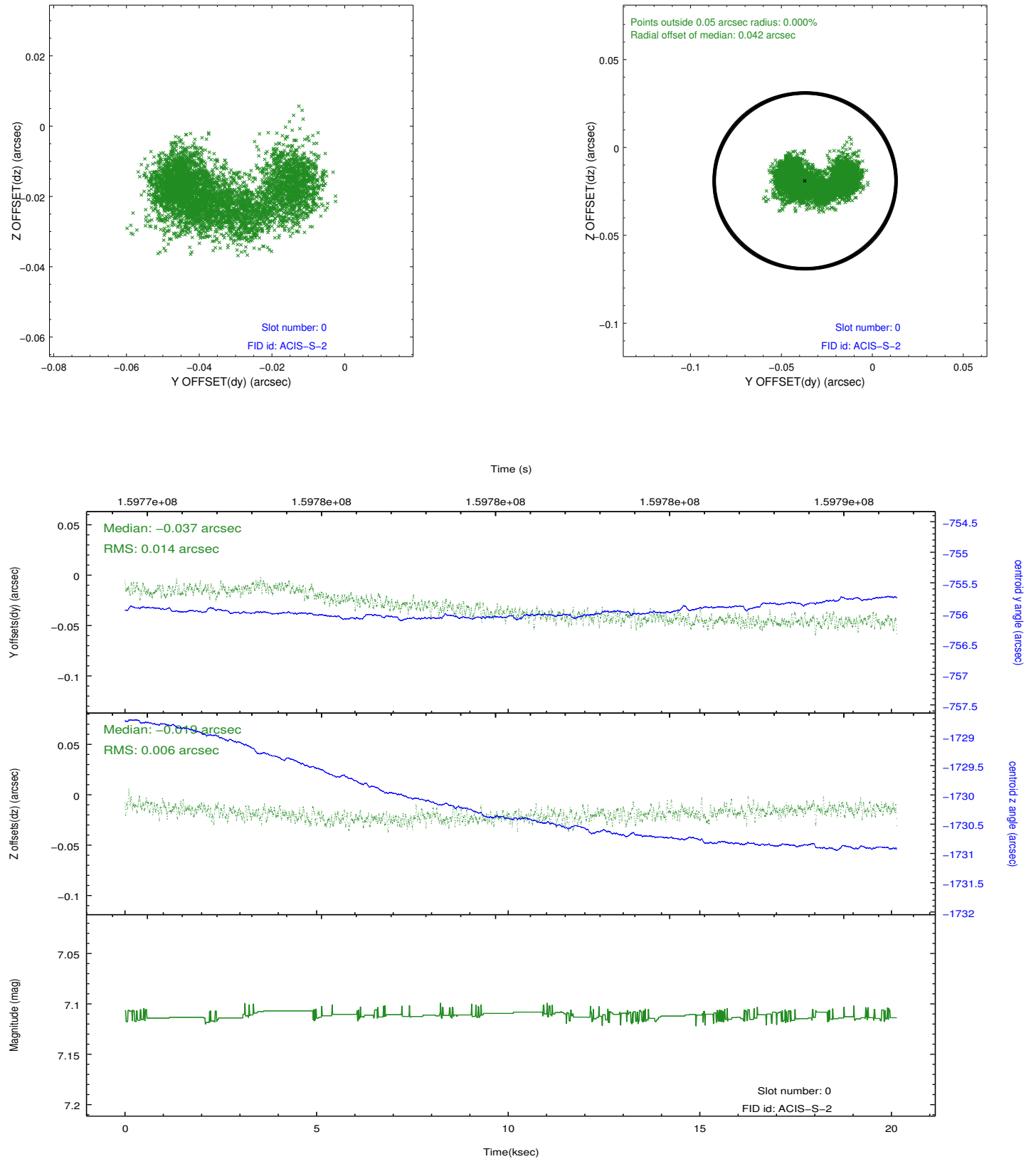


## 2.4.5 Slot 7

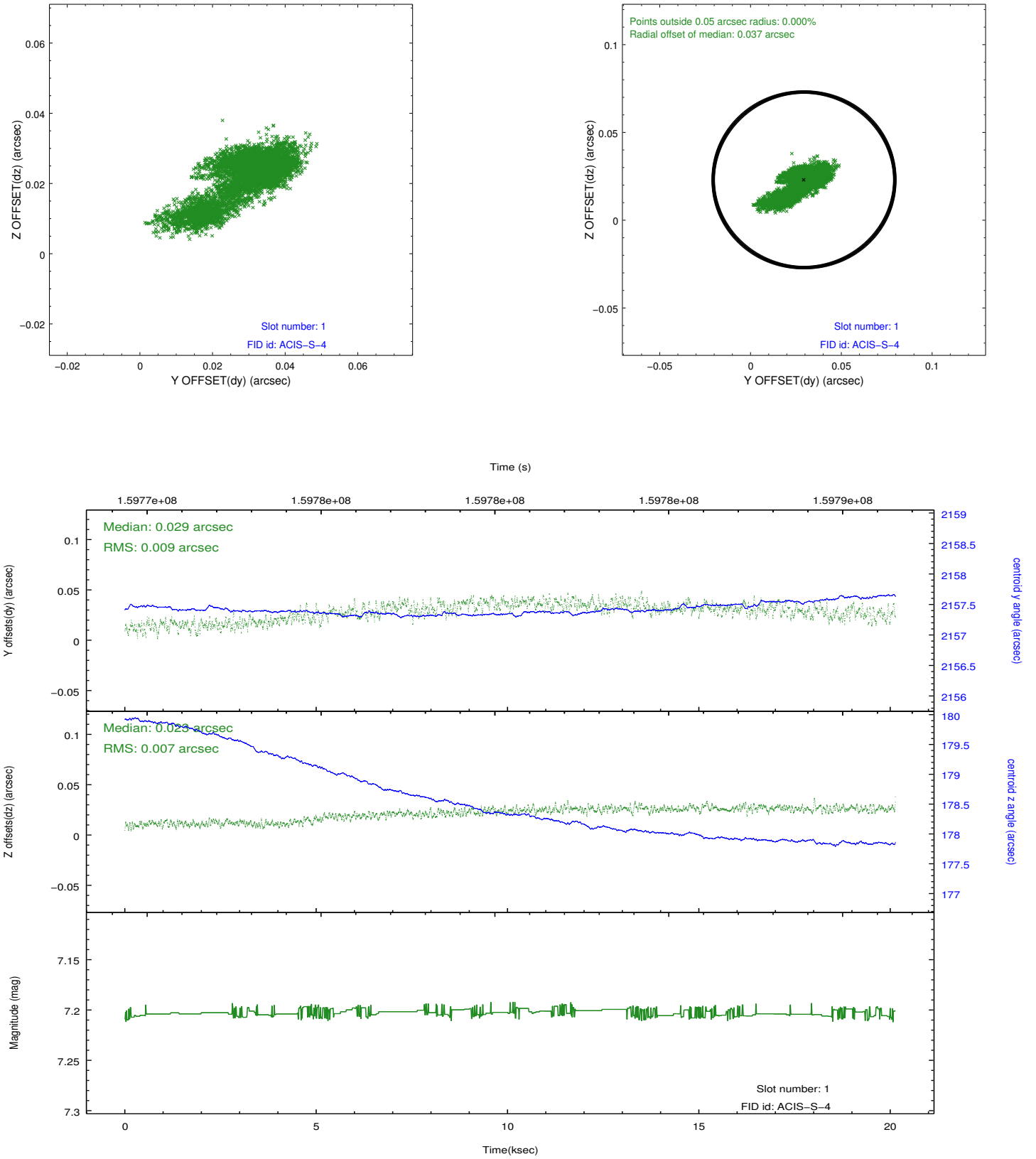


## 2.5 FID Slots

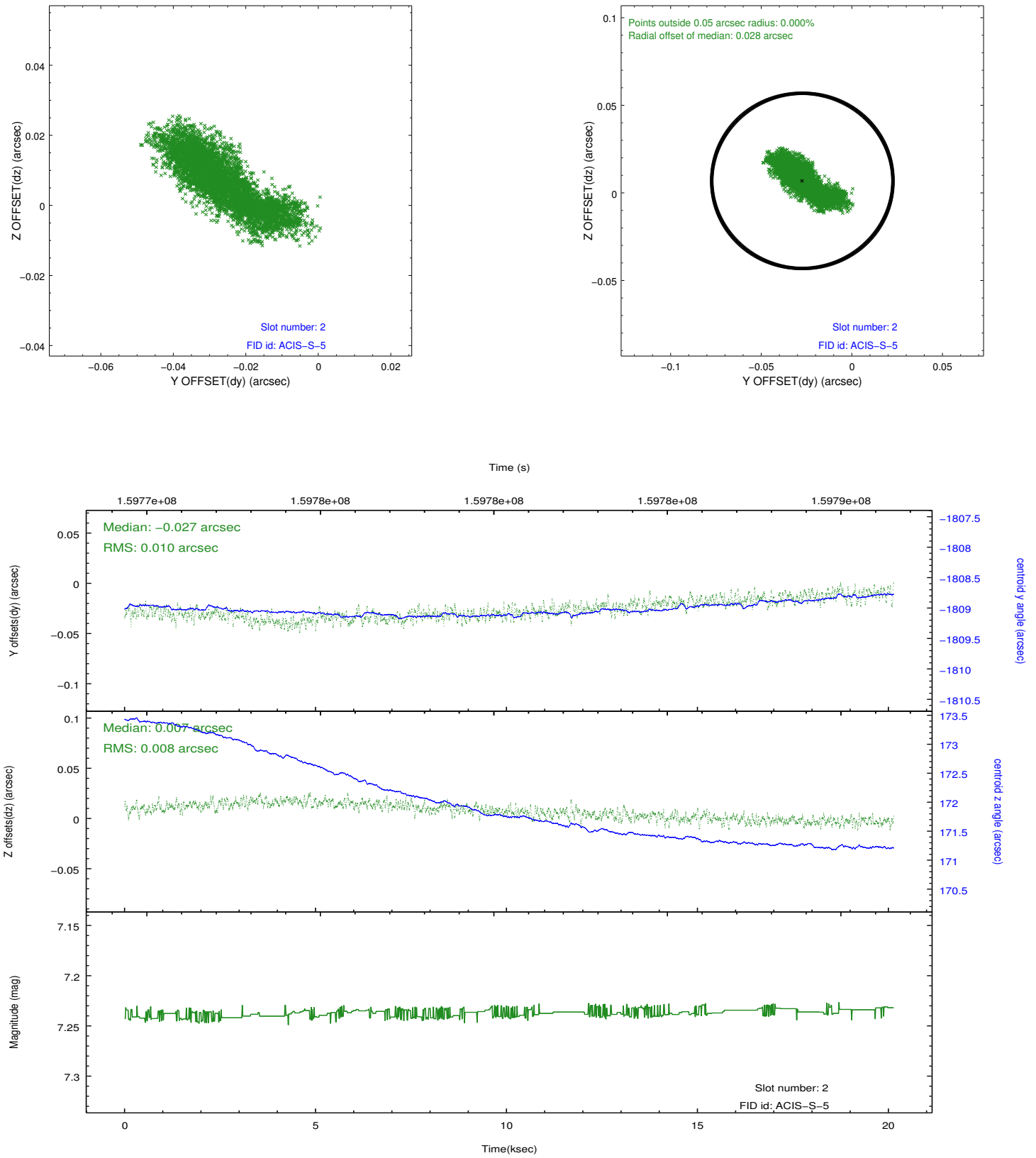
### 2.5.1 Slot 0



## 2.5.2 Slot 1



### 2.5.3 Slot 2



## A Summary

### A.1 Status

V&V Scientist	Jen Lauer
V&V Date (YYYY-MM-DD)	2012.11.01
V&V Edition	1
V&V Disposition and Status	OK
V&V Charge Time	19.884

### A.2 Comments