

V&V Reference Report

L2 ASCDS Version : 7.6.8

Observation 2578 - L2 Version 001
Chandra X-Ray Center

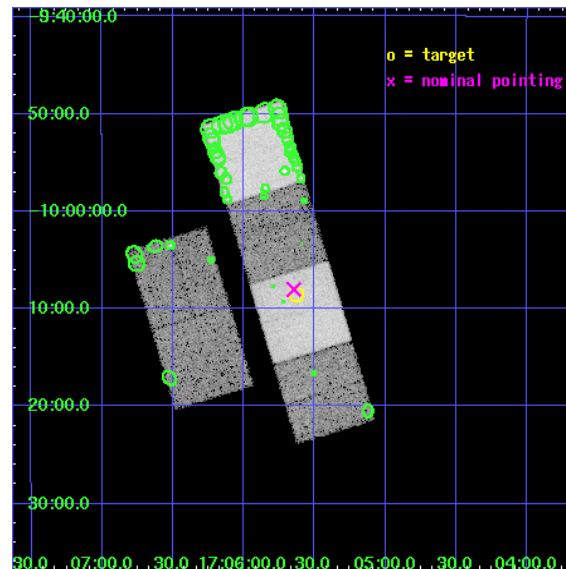
L2 Processing Date : Jul 19 2006

Contents

1	Front	2
2	OBI	3
2.1	OBI	3
2.1.1	Images	3
2.1.2	Bias	3
2.1.3	Parameters	4
2.1.4	Events	4
2.2	Compared Parameters	5
2.3	Aspect	6
2.4	Star Slots	9
2.4.1	Slot 3	9
2.4.2	Slot 4	10
2.4.3	Slot 5	11
2.4.4	Slot 6	12
2.4.5	Slot 7	13
2.5	FID Slots	14
2.5.1	Slot 0	14
2.5.2	Slot 1	15
2.5.3	Slot 2	16
3	Point Sources	17
A	Summary	18
A.1	Status	18
A.2	Comments	18

1 Front

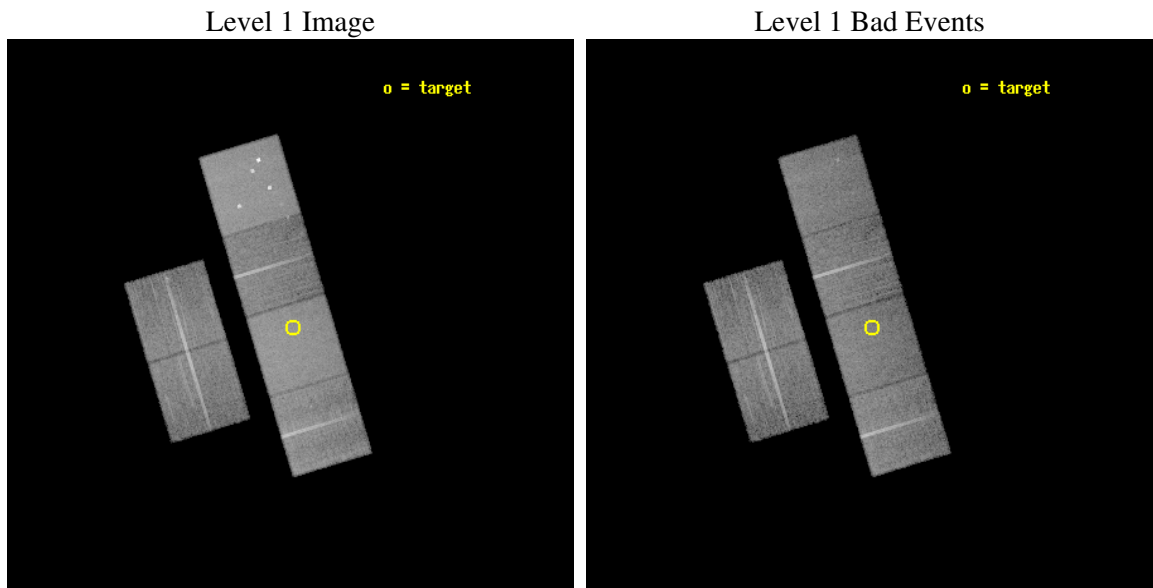
seq_num	200186
obs_id	2578
title	INVESTIGATING COLLIDING WINDS AND MAGNETISED STARS IN YOUNG PLANETARY NEBULAE IMAGED WITH HST
observer	Dr. Raghvendra Sahai
object	M 2-9
dtcycle	0
cycle	P
ra_targ	256.407083
dec_targ	-10.142361
ra_nom	256.41153136375
dec_nom	-10.133742292879
roll_nom	73.259559041076
revision	2
ontime	19884.799925923
livetime	19633.006616072
ontime2	19884.799925923
ontime3	19881.558965683
ontime5	19881.558965623
ontime6	19884.799925923
ontime7	19884.799925923
ontime8	19884.799925923
l2events	213685



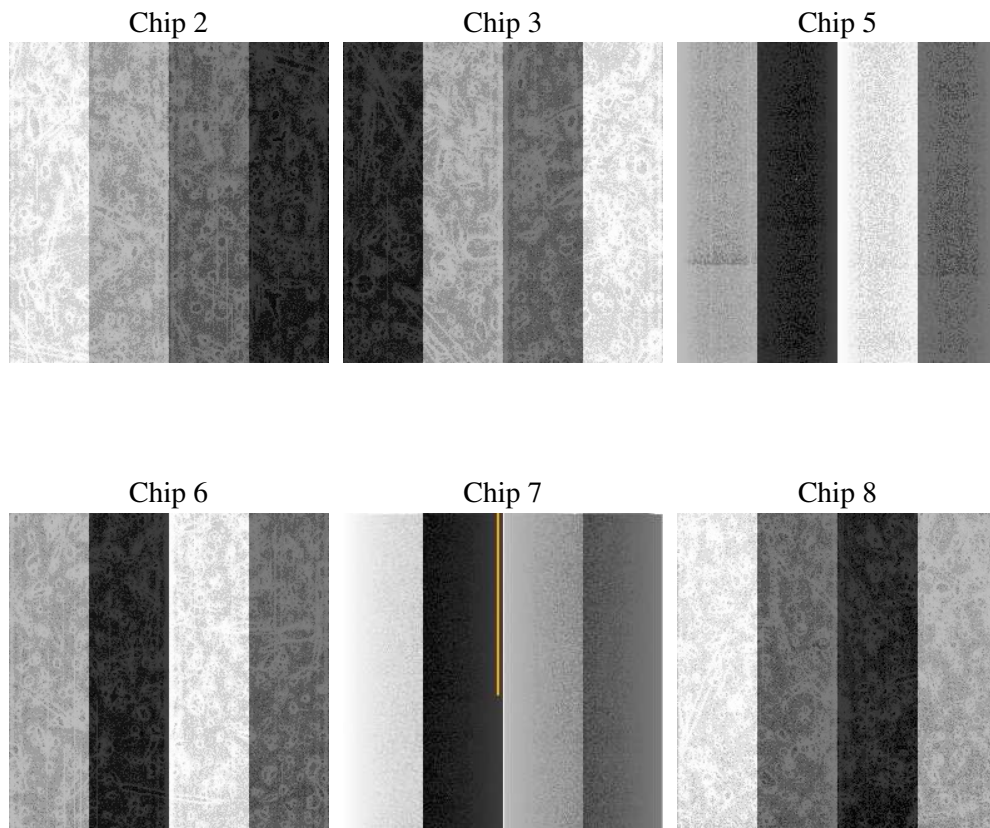
2 OBI

2.1 OBI

2.1.1 Images



2.1.2 Bias



2.1.3 Parameters

obi_num	2
ascdsver	7.6.8
caldsver	3.2.2
date	2006-07-19T09:17:47
revision	2

sched_exp_time	20000.000000
ontime	19890.017393529
ontime2	19890.017373621
ontime3	19886.776433289
ontime5	19886.776433229
ontime6	19890.017393529
ontime7	19890.017393529
ontime8	19890.017393529
l1events	894821

2.1.4 Events

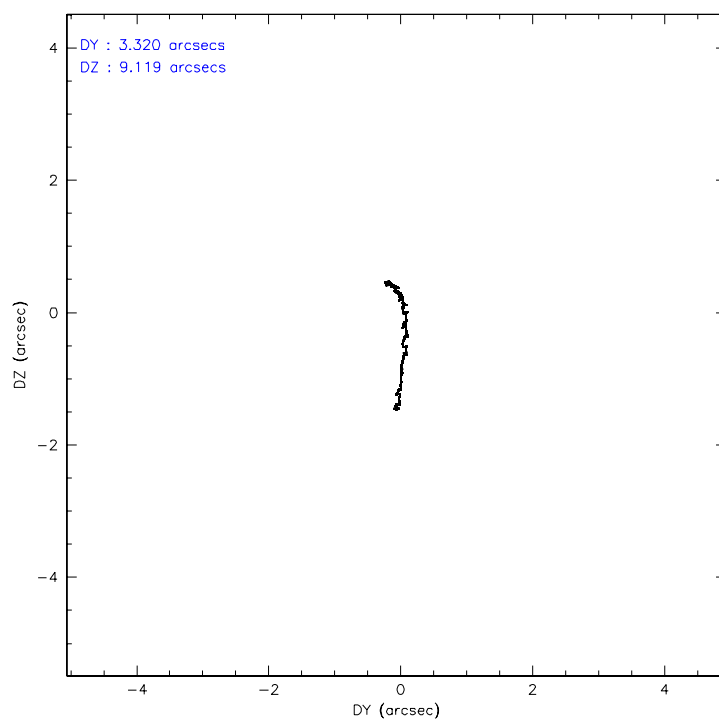
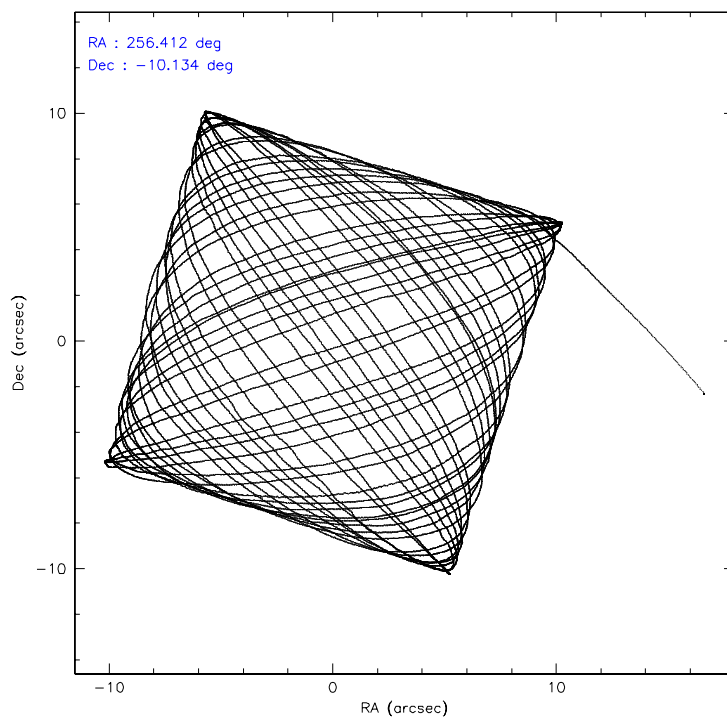
	ccd 2	ccd 3	ccd 5	ccd 6	ccd 7	ccd 8
level 1 events	126035	118744	199051	121751	175941	153299
rejected events	110848	104399	100992	106087	101997	120343
rejected %	87%	87%	50%	87%	57%	78%

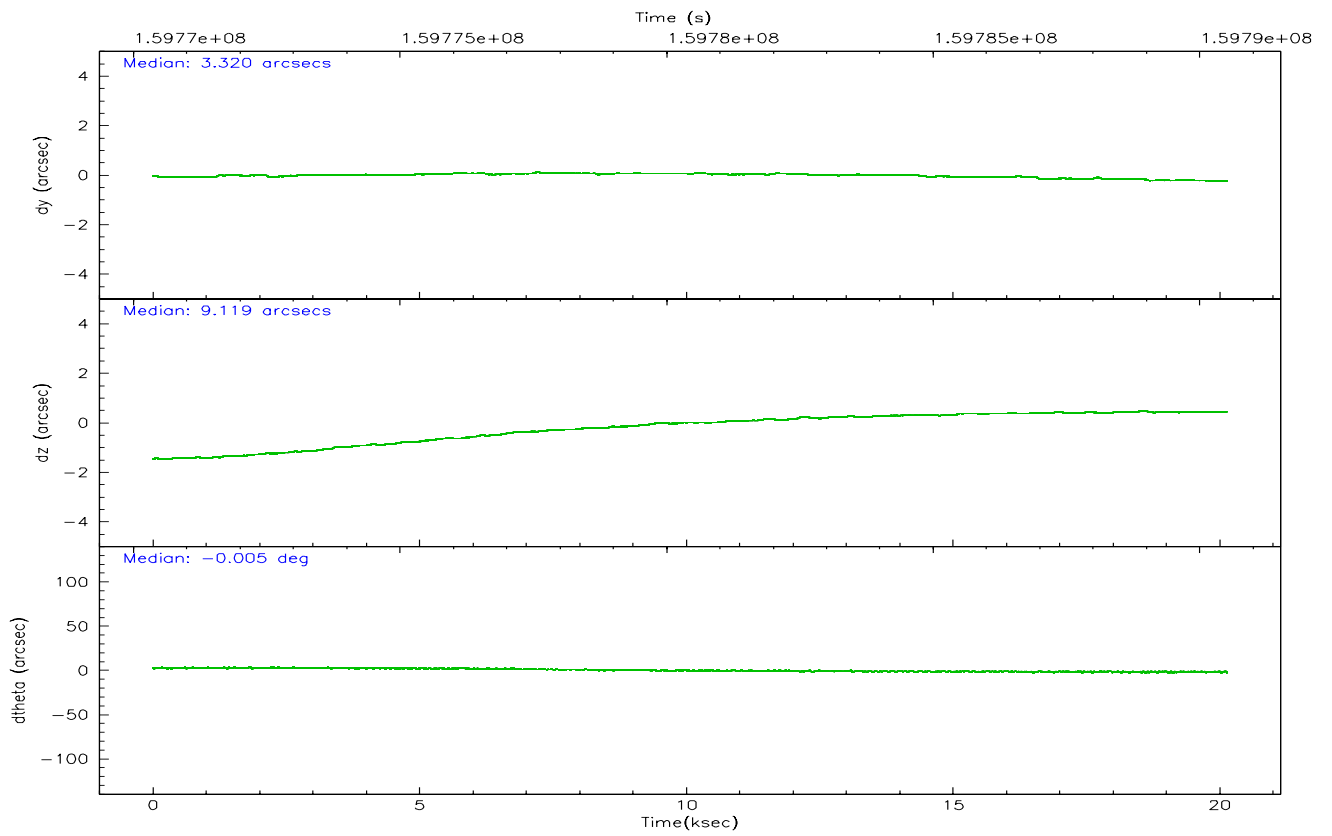
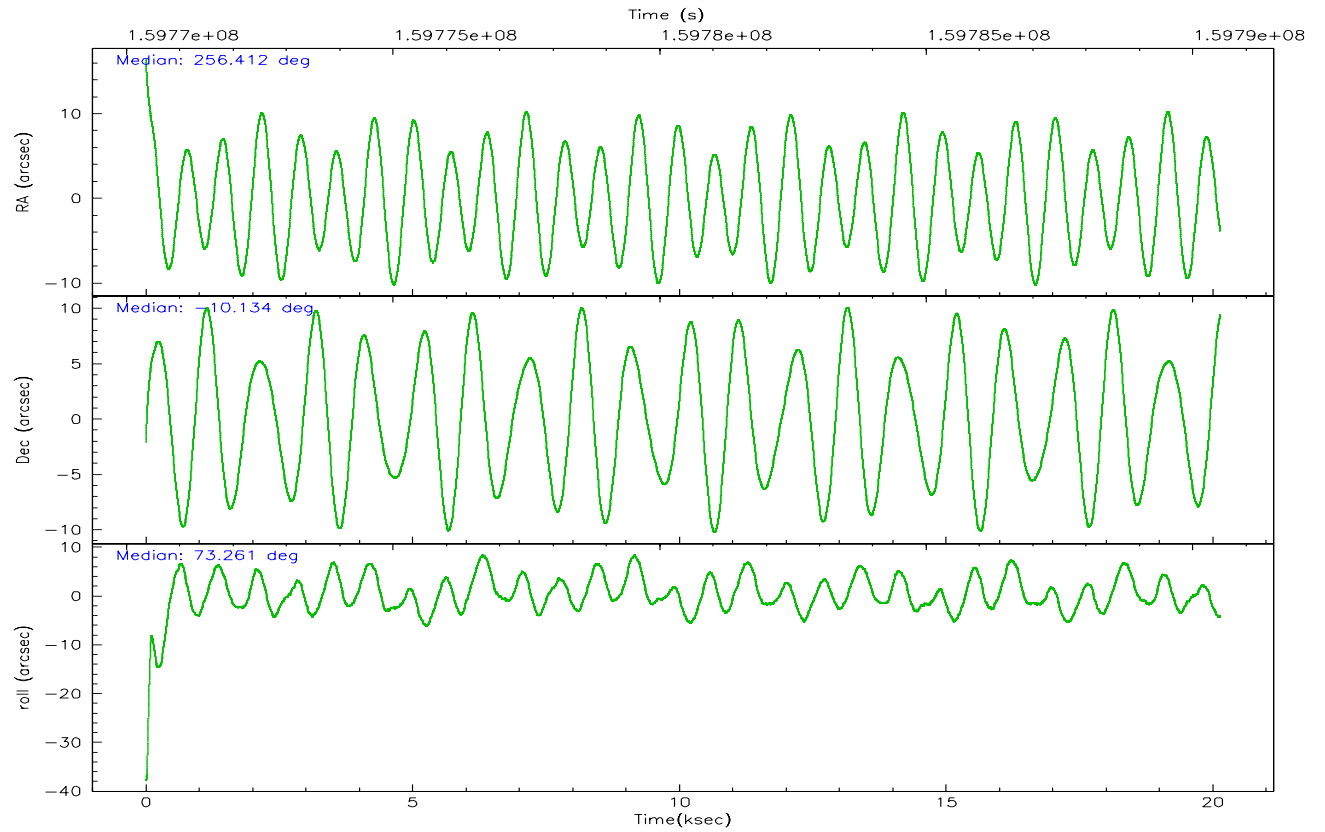
	ccd 2	ccd 3	ccd 5	ccd 6	ccd 7	ccd 8
grade 0 events	7069	6462	13514	6914	4998	11230
	5%	5%	6%	5%	2%	7%
grade 1 events	61	60	377	53	84	112
	0%	0%	0%	0%	0%	0%
grade 2 events	2997	2663	29335	3042	17256	6968
	2%	2%	14%	2%	9%	4%
grade 3 events	1376	1448	2287	1469	3782	3390
	1%	1%	1%	1%	2%	2%
grade 4 events	1352	1326	2209	1455	3832	3179
	1%	1%	1%	1%	2%	2%
grade 5 events	4652	5203	8582	5557	10507	7023
	3%	4%	4%	4%	5%	4%
grade 6 events	2395	2451	50723	2785	44090	8213
	1%	2%	25%	2%	25%	5%
grade 7 events	106133	99131	92024	100476	91392	113184
	84%	83%	46%	82%	51%	73%

2.2 Compared Parameters

Parameter	Planned	Actual	Parameter	Planned	Actual
Instrument	ACIS	ACIS	Obspar format version number	6	6
Detector	ACIS-235678	ACIS-235678	Obspar file type	PREDICTED	ACTUAL
Grating	NONE	NONE	Obspar update status	NONE	UPDATED
Data mode	FAINT	FAINT	On-chip summing requested	N	N
Observation mode	POINTING	POINTING	Subarray requested	NONE	NONE
Pointing RA	256.418224	256.4115313637516	Alternating exposures requested	N	N
Pointing Dec	-10.160153	-10.13374229287894	Primary exposure time	0.000000	3.2
Pointing Roll	73.104134	73.25955904107619			
SIM focus pos (mm)	-0.684267	-0.6828225247311905			
SIM defocus (mm)	0	0.001444936568705701			
SIM translation stage pos (mm)	-190.132523	-190.1400660498719			
SIM translation stage offset (mm)	0	0.00754346686406393			
Observation start time	159770508.184000	159769470.60108			
Observation start date	2003-01-24T04:40:44	2003-01-24T04:24:30			
Observation end time	159790508.184000	159791416.877			
Observation end date	2003-01-24T10:14:04	2003-01-24T10:30:16			
Read mode	TIMED	TIMED			

2.3 Aspect



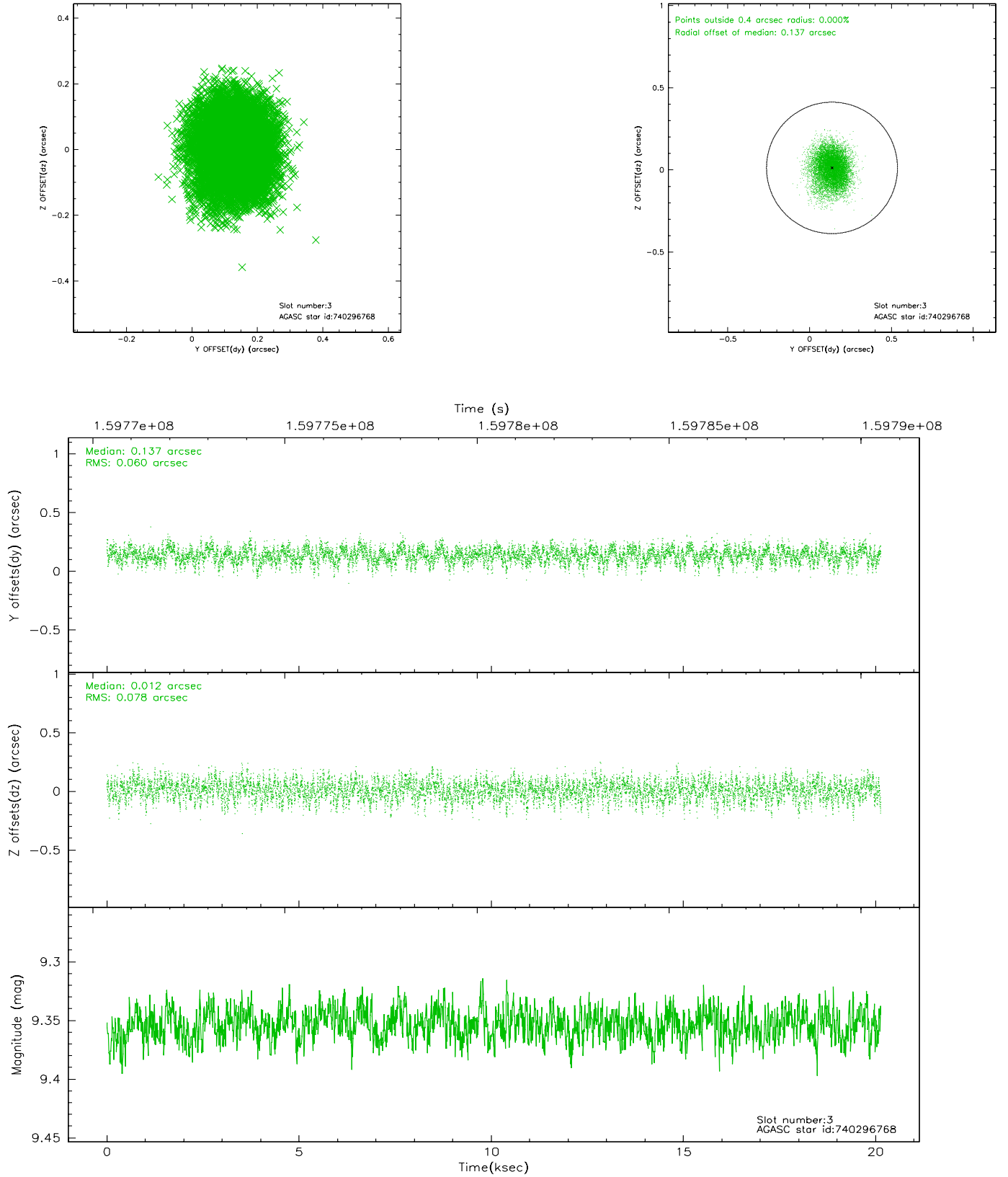


Slot Statistics

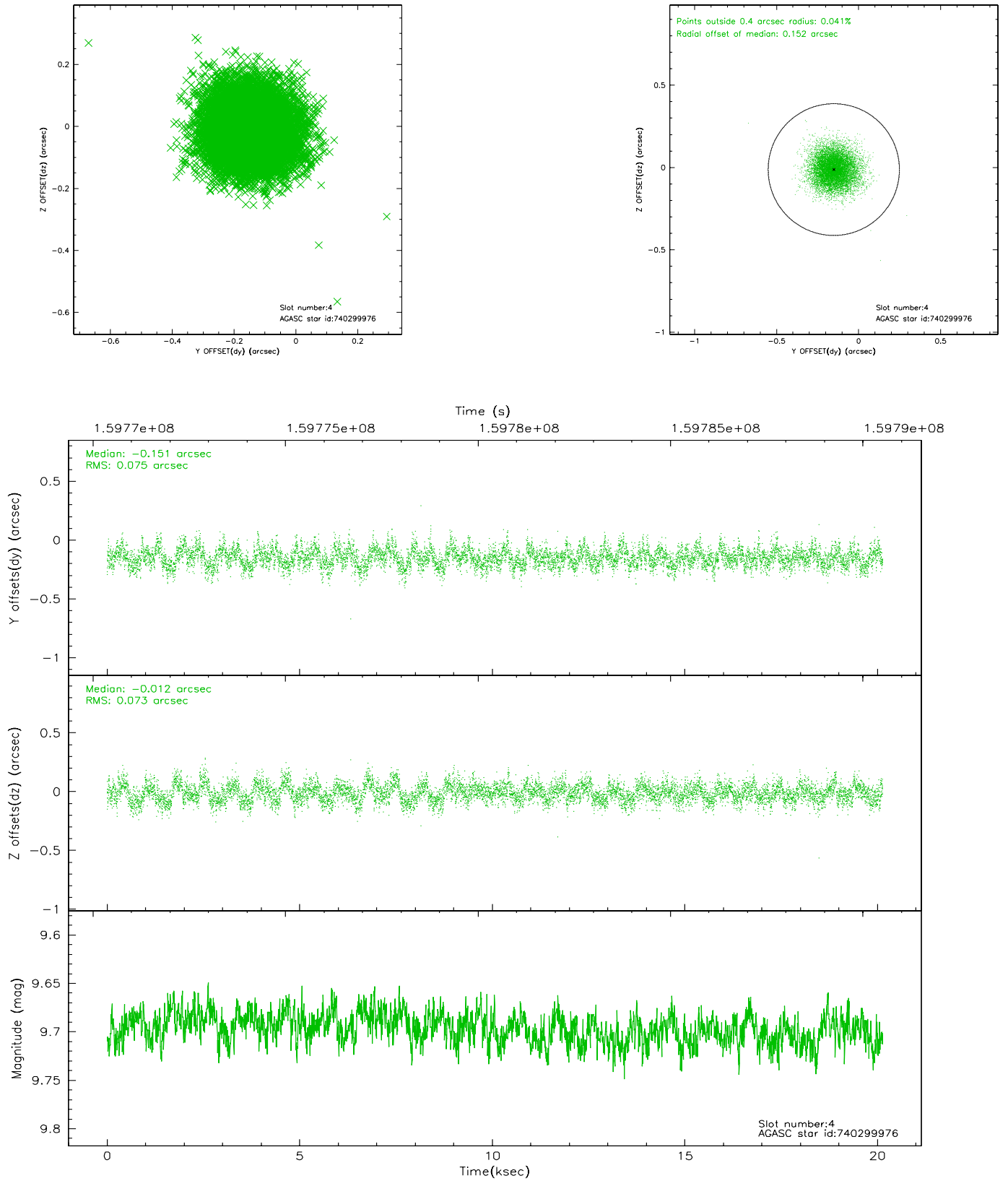
slot	status	id	mag	n_pts	med_dy	med_dz	dr1	dr2	ra	dec	mean_y	mean_z
0	FID	ACIS-S-2	7.11	4912	-0.025	0.004	0.015	0.026	0.000000	0.000000	-755.95	-1730.12
1	FID	ACIS-S-4	7.20	4911	-0.013	0.011	0.010	0.019	0.000000	0.000000	2157.23	178.20
2	FID	ACIS-S-5	7.24	4911	0.003	-0.005	0.013	0.021	0.000000	0.000000	-1808.55	172.03
3	GUIDE	740296768	9.35	9820	0.137	0.012	0.105	0.171	256.890301	-10.844838	-1873.98	-2313.55
4	GUIDE	740299976	9.70	9780	-0.151	-0.012	0.112	0.181	257.000751	-9.942252	1349.24	-1748.96
5	GUIDE	740303840	9.01	9821	0.159	0.043	0.074	0.126	256.674432	-10.568937	-1144.12	-1295.19
6	GUIDE	740306456	9.19	9818	0.002	-0.006	0.082	0.134	256.692253	-9.772946	1616.33	-525.05
7	GUIDE	740306640	8.45	9821	-0.145	-0.032	0.062	0.100	256.770514	-9.791631	1632.56	-810.27

2.4 Star Slots

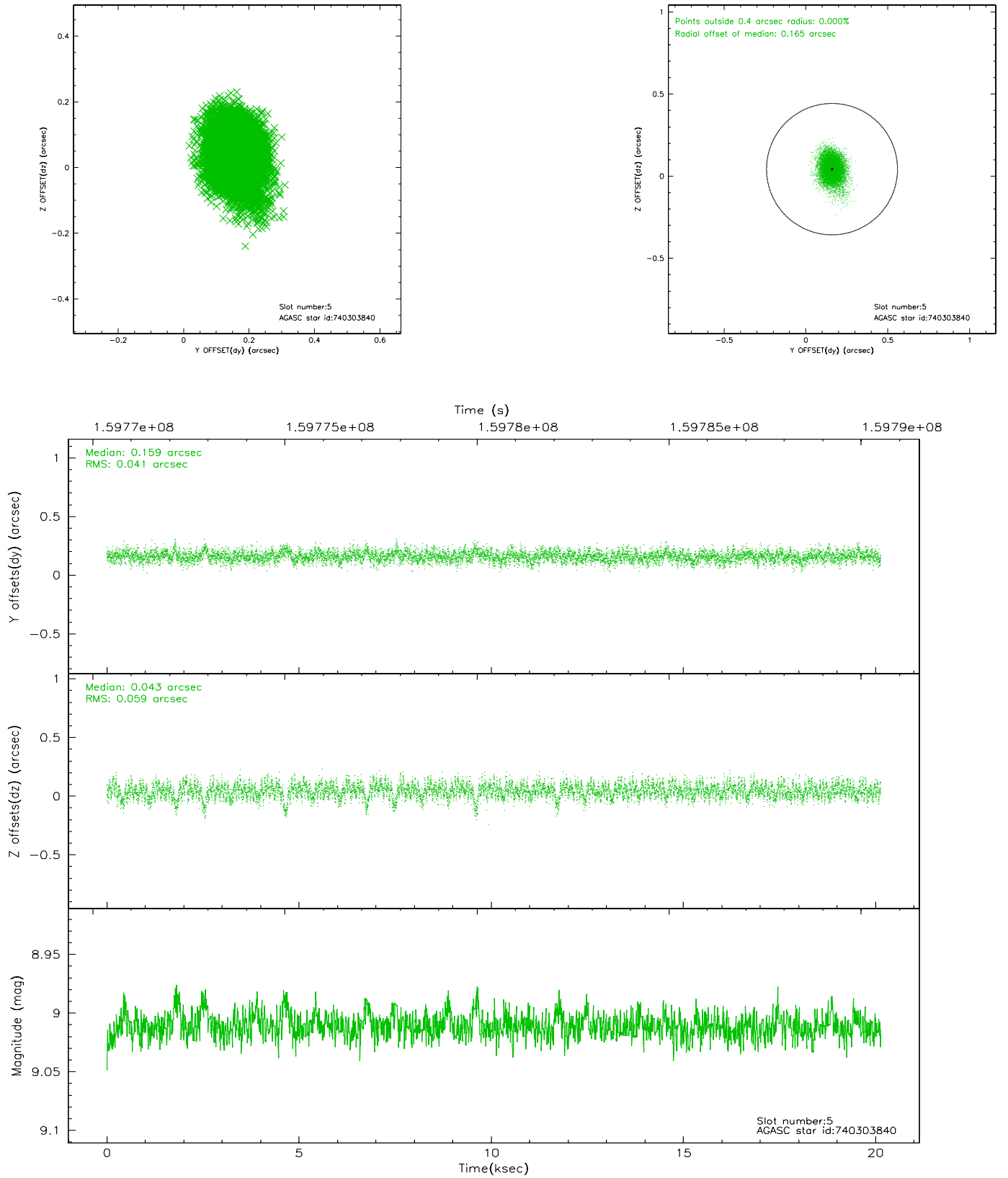
2.4.1 Slot 3



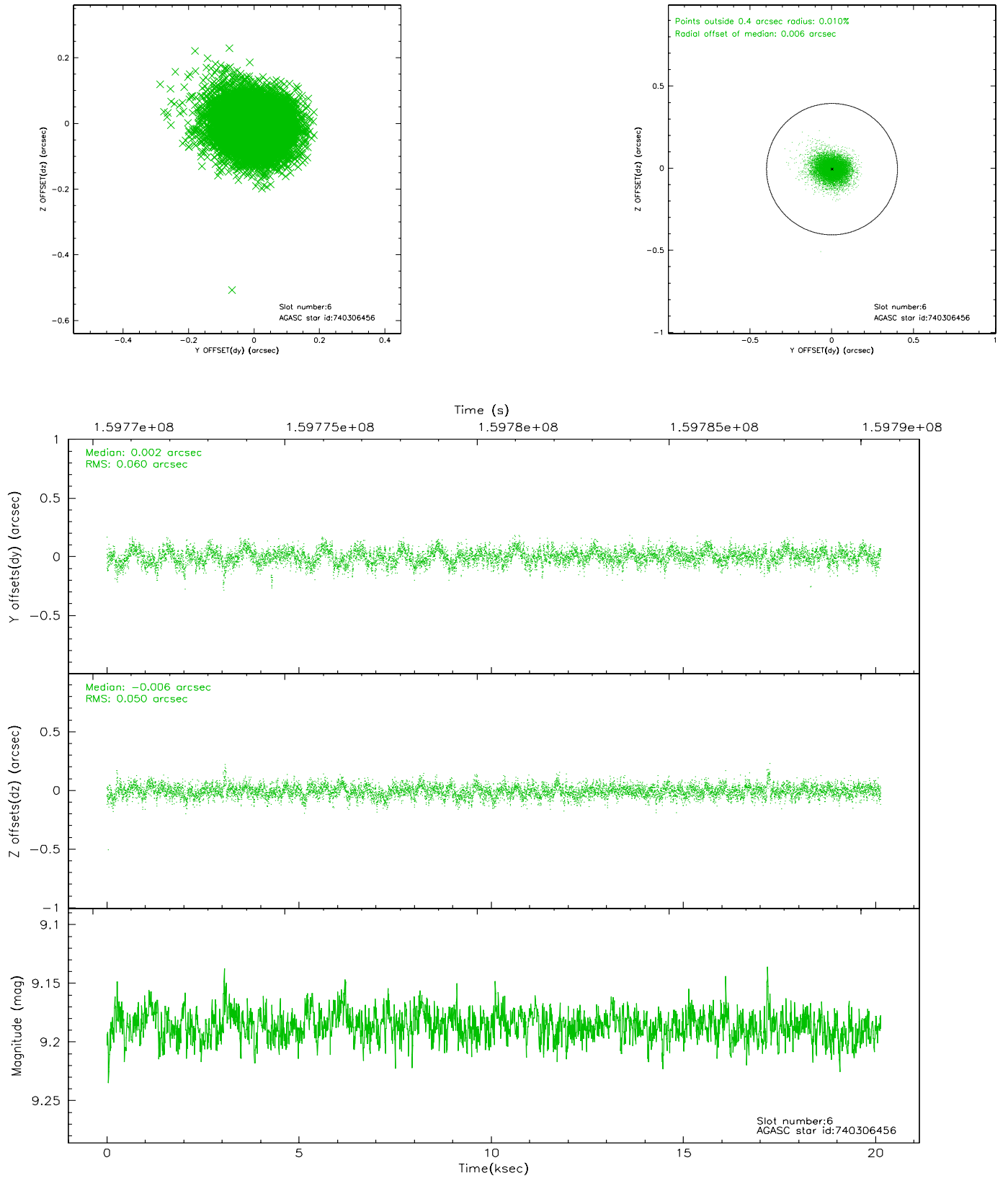
2.4.2 Slot 4



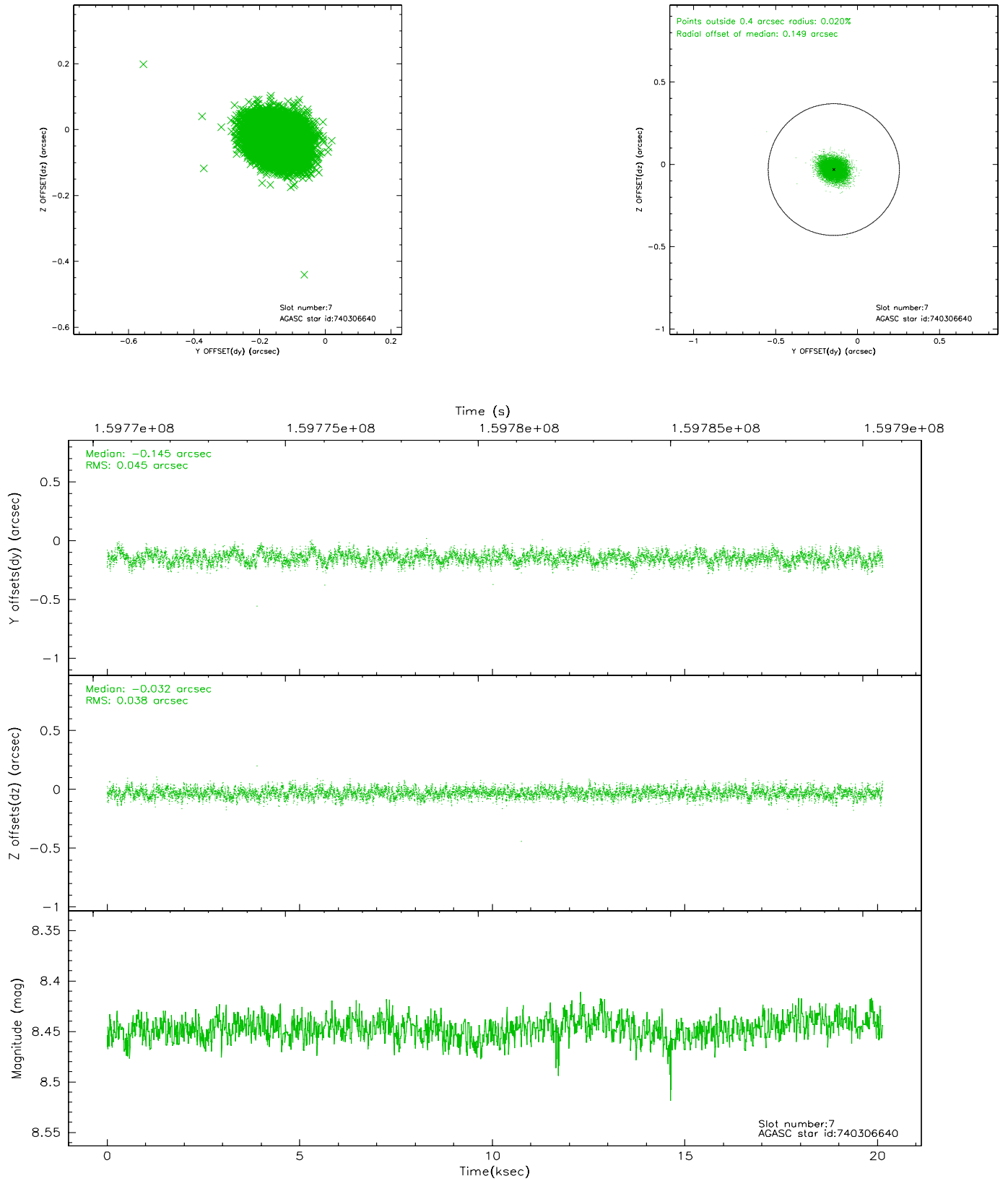
2.4.3 Slot 5



2.4.4 Slot 6

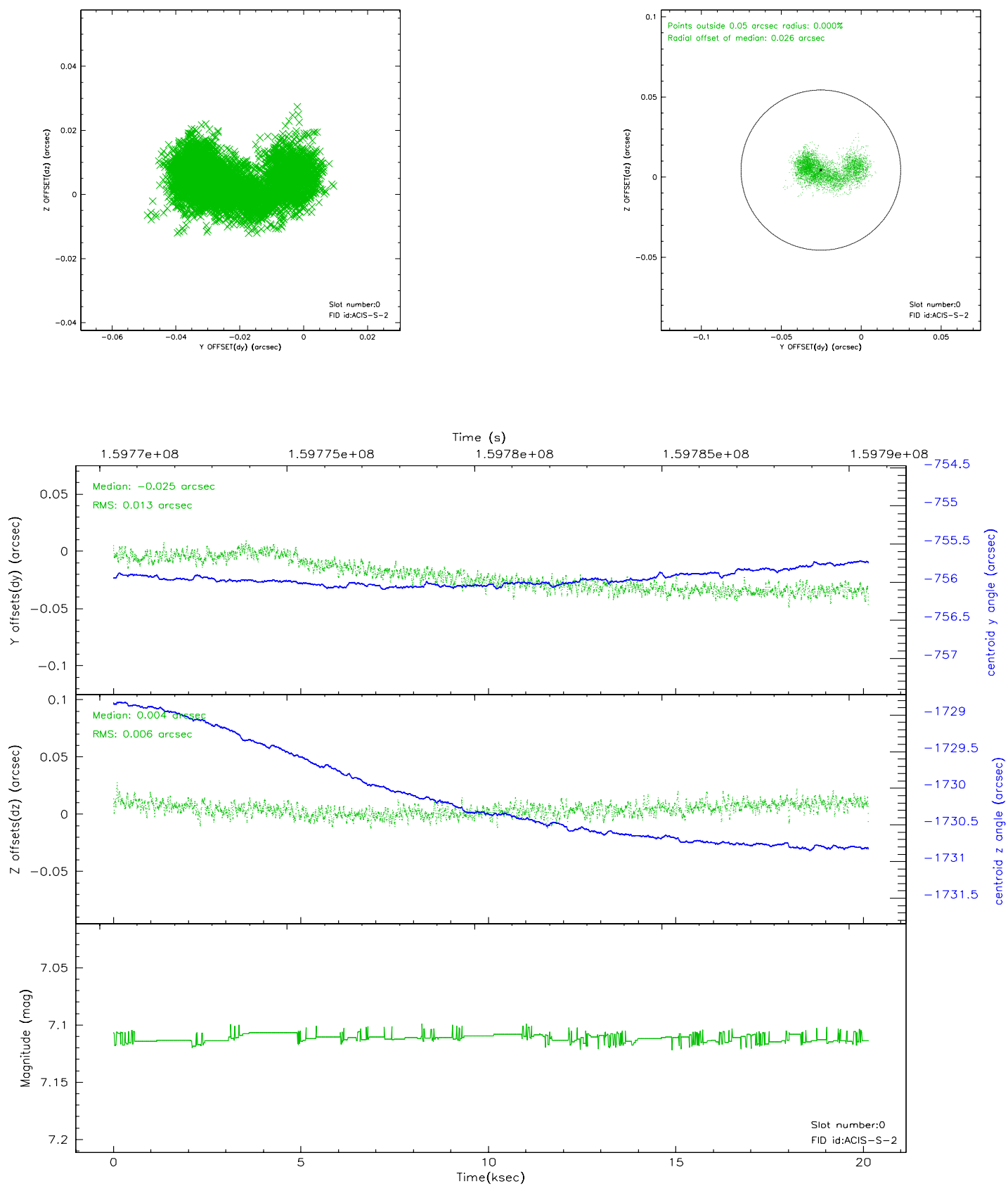


2.4.5 Slot 7

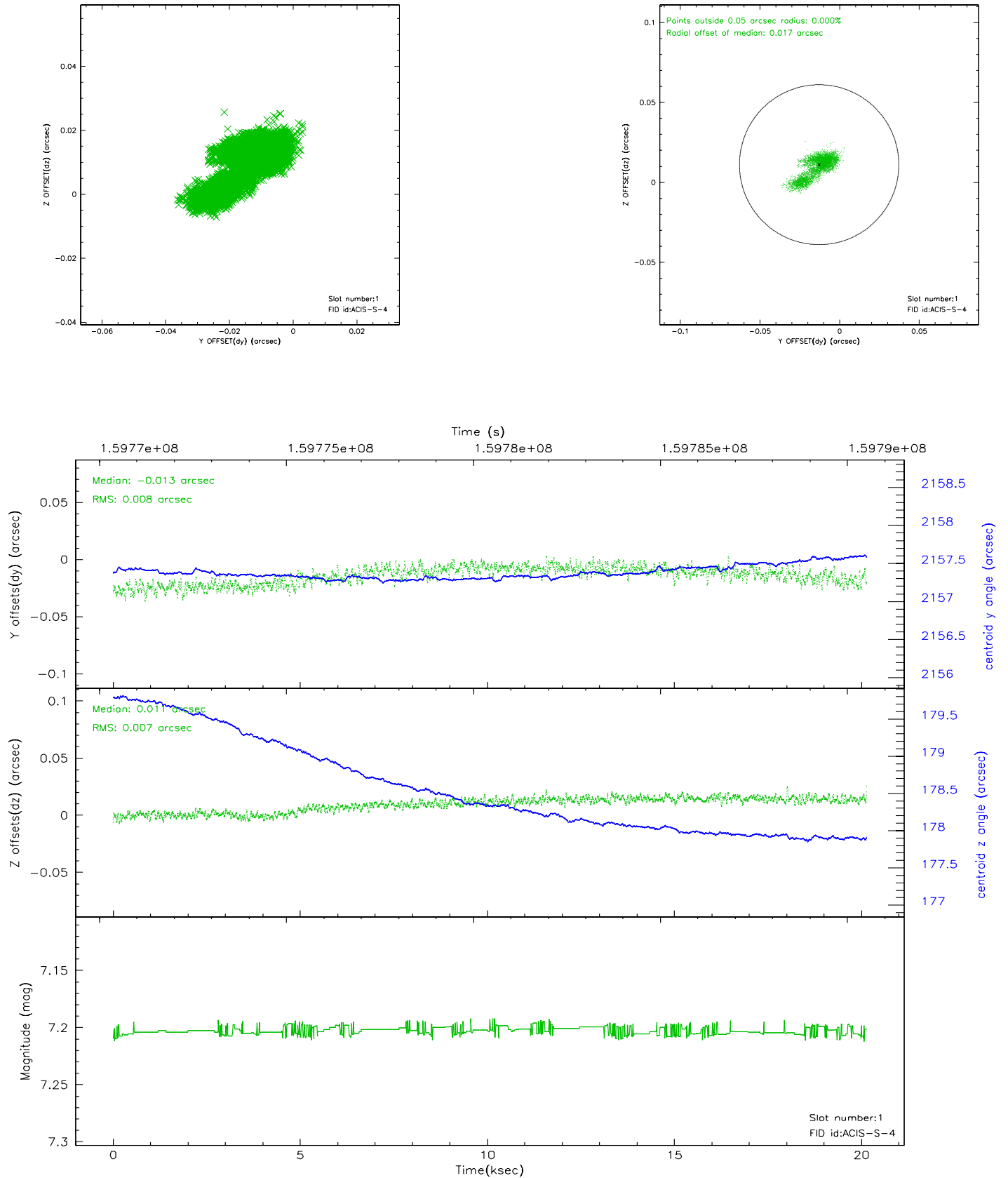


2.5 FID Slots

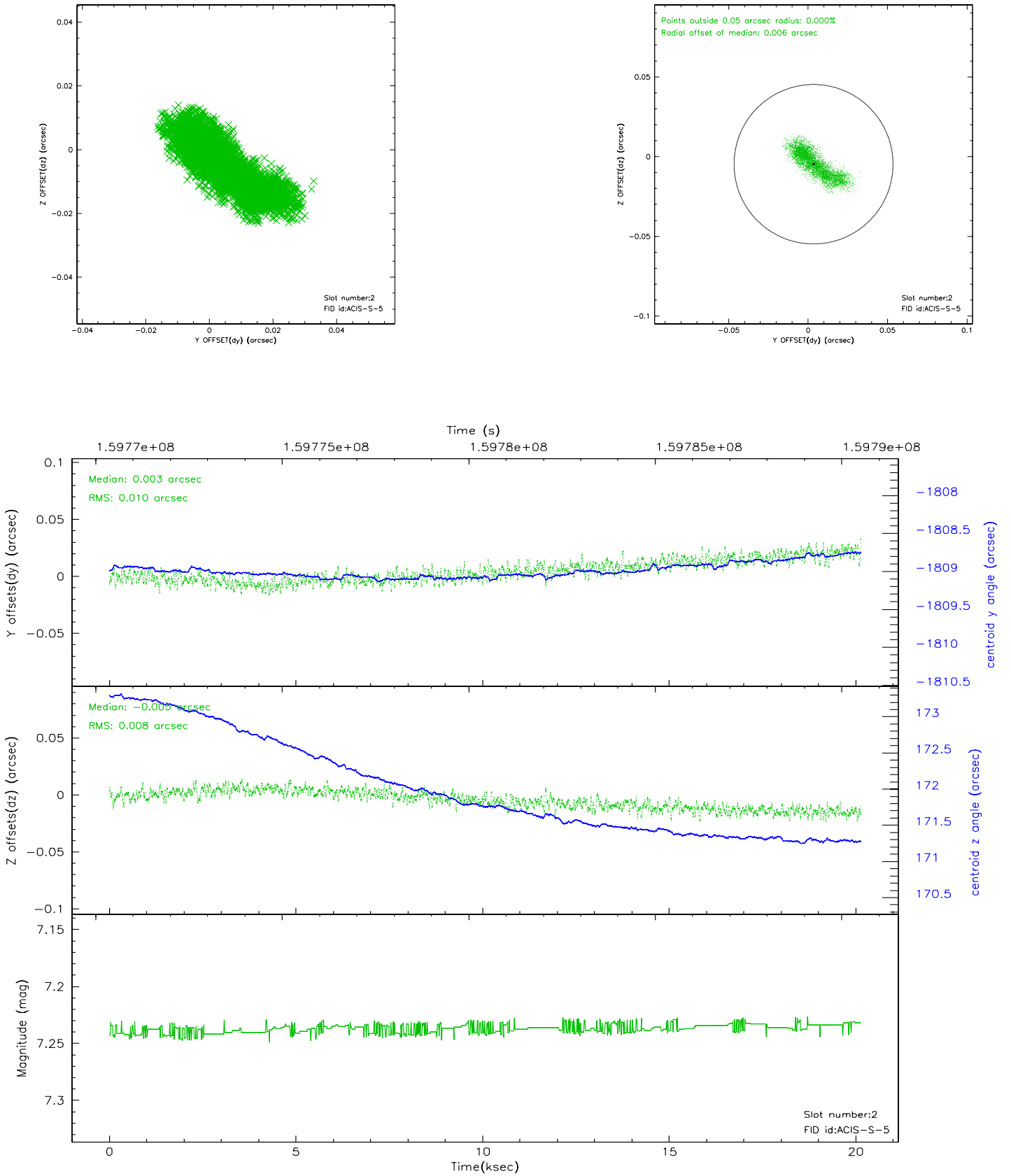
2.5.1 Slot 0



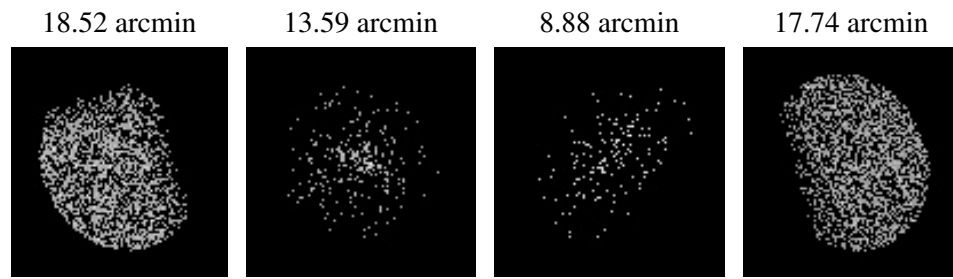
2.5.2 Slot 1



2.5.3 Slot 2



3 Point Sources



A Summary

A.1 Status

V&V Scientist	Jen Lauer
V&V Date (YYYY-MM-DD)	2006.07.19
V&V Edition	1
V&V Disposition and Status	OK
V&V Charge Time	19.884

A.2 Comments