

V&V Reference Report

L2 ASCDS Version : 7.6.9

Observation 2508 - L2 Version 001
Chandra X-Ray Center

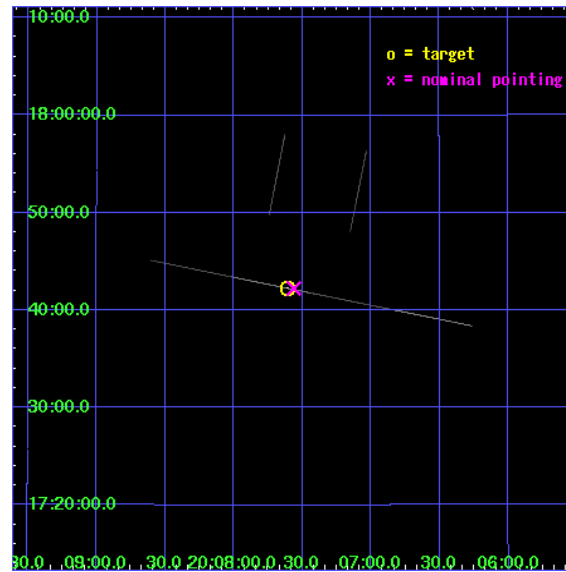
L2 Processing Date : Dec 15 2006

Contents

1	Front	2
2	OBI	3
2.1	OBI	3
2.1.1	Images	3
2.1.2	Bias	3
2.1.3	Parameters	4
2.1.4	Events	4
2.2	Compared Parameters	5
2.3	Aspect	6
2.4	Star Slots	9
2.4.1	Slot 3	9
2.4.2	Slot 4	10
2.4.3	Slot 5	11
2.4.4	Slot 6	12
2.4.5	Slot 7	13
2.5	FID Slots	14
2.5.1	Slot 0	14
2.5.2	Slot 1	15
2.5.3	Slot 2	16
A	Summary	17
A.1	Status	17
A.2	Comments	17

1 Front

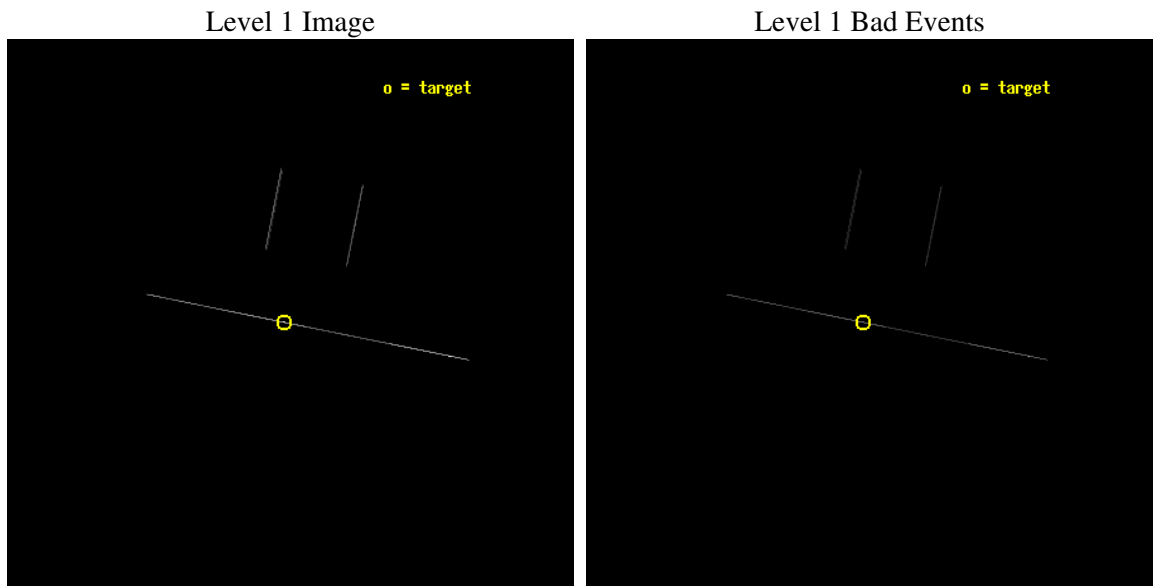
seq_num	300061
obs_id	2508
title	WZ SGE IN OUTBURST TEN YEARS EARLY: II THE X-RAY EMISSION
observer	Dr Peter Wheatley
object	WZ SGE
ra_targ	301.900833
dec_targ	17.704167
ra_nom	301.89053079414
dec_nom	17.704013608942
roll_nom	191.32522788061
revision	3
ontime	5156.25
livetime	5136.1083984375
ontime2	5156.25
ontime3	5156.25
ontime5	5156.25
ontime6	5156.25
ontime7	5156.25
ontime8	5156.25
l2events	68994



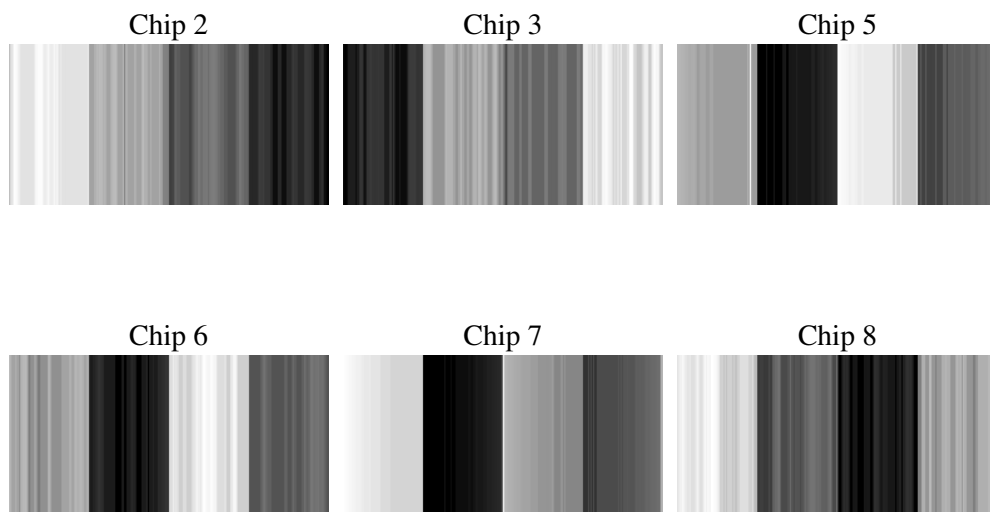
2 OBI

2.1 OBI

2.1.1 Images



2.1.2 Bias



2.1.3 Parameters

obi_num	0
ascdsver	7.6.9
caldbver	3.2.4
date	2006-12-15T21:33:08
revision	3

sched_exp_time	5000.000000
ontime	6033.763860777
ontime2	6033.7164200842
ontime3	6035.1802660227
ontime5	6033.7640378177
ontime6	6033.7639600784
ontime7	6033.763860777
ontime8	6035.222742334
l1events	115077

2.1.4 Events

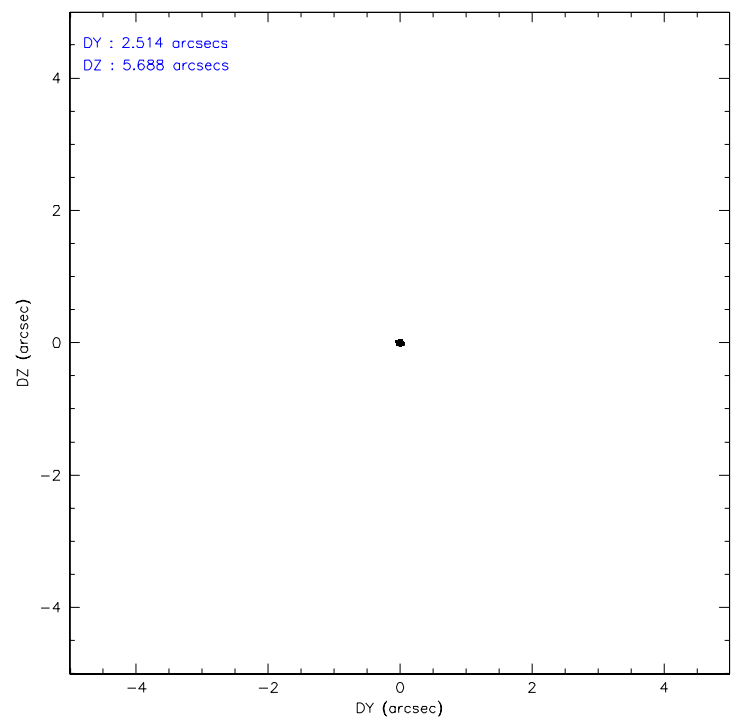
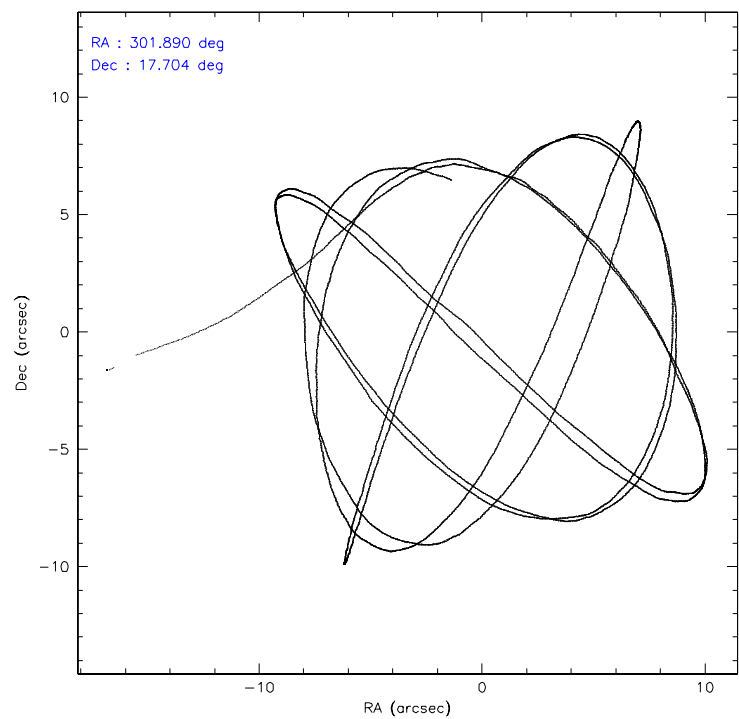
	ccd 2	ccd 3	ccd 5	ccd 6	ccd 7	ccd 8
level 1 events	7499	8189	39642	8499	35389	15859
rejected events	2147	2241	8463	2575	7135	4330
rejected %	28%	27%	21%	30%	20%	27%

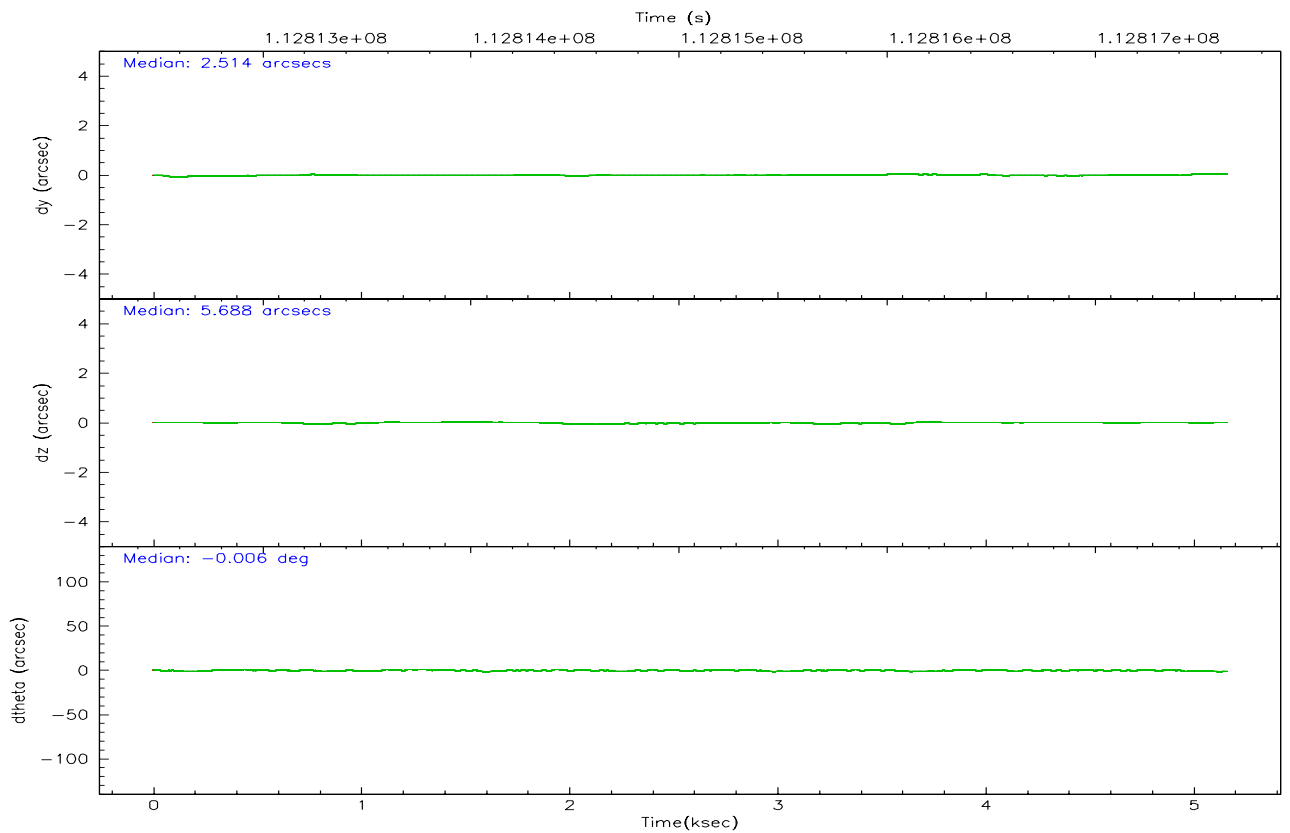
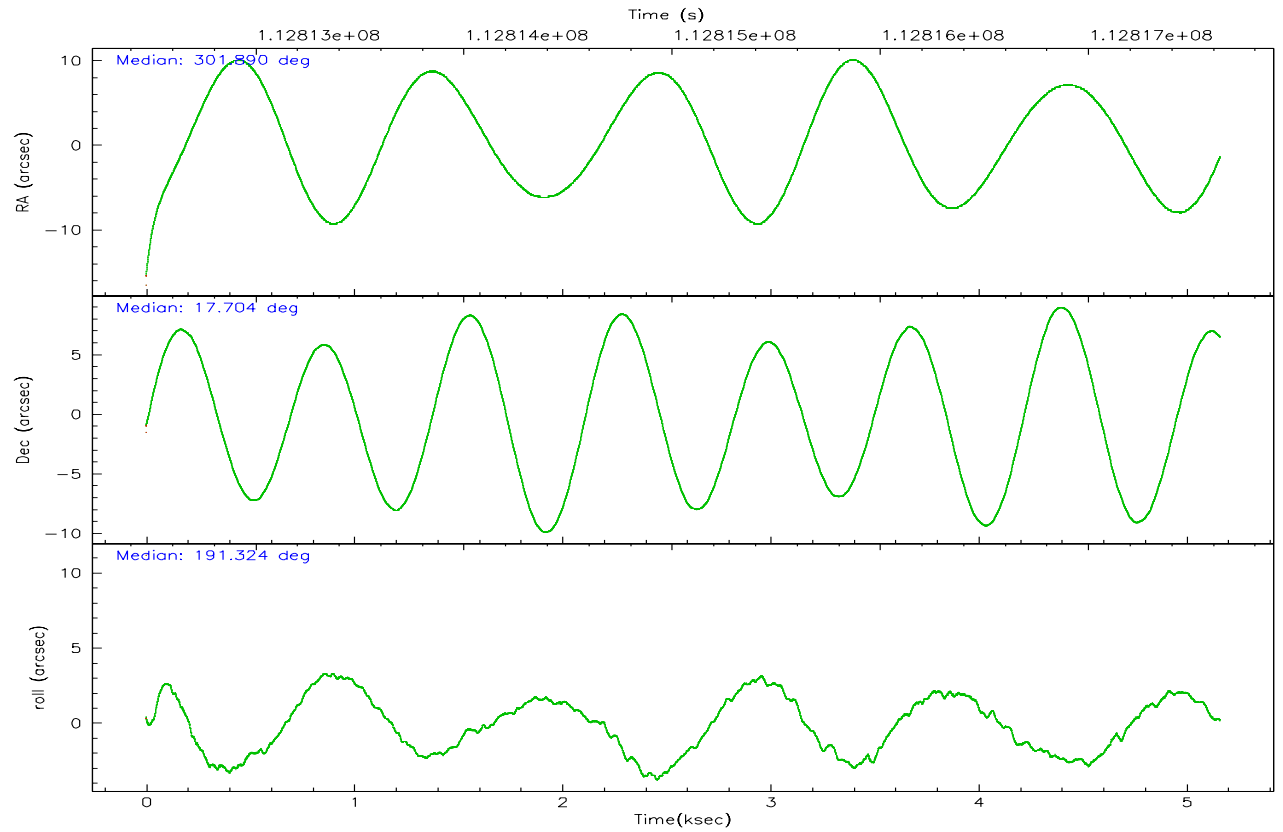
	ccd 2	ccd 3	ccd 5	ccd 6	ccd 7	ccd 8
grade 0 events	809	792	9497	823	6082	2562
	10%	9%	23%	9%	17%	16%
grade 1 events	22	32	53	23	56	58
	0%	0%	0%	0%	0%	0%
grade 2 events	2180	2555	9454	2482	7756	3963
	29%	31%	23%	29%	21%	24%
grade 3 events	989	1124	678	979	1899	1853
	13%	13%	1%	11%	5%	11%
grade 4 events	982	900	600	997	1871	1823
	13%	10%	1%	11%	5%	11%
grade 5 events	1174	1345	3163	1554	3767	2108
	15%	16%	7%	18%	10%	13%
grade 6 events	1343	1441	16197	1641	13958	3492
	17%	17%	40%	19%	39%	22%
grade 7 events	0	0	0	0	0	0
	0%	0%	0%	0%	0%	0%

2.2 Compared Parameters

Parameter	Planned	Actual	Parameter	Planned	Actual
Instrument	ACIS	ACIS	Obspar format version number	6	6
Detector	ACIS-235678	ACIS-235678	Obspar file type	PREDICTED	ACTUAL
Grating	NONE	NONE	Obspar update status	NONE	UPDATED
Data mode	CC33_FAINT	CC33_FAINT	Number of optional ACIS chips dropped	0	0
Observation mode	POINTING	POINTING	On-chip summing requested	N	N
Pointing RA	301.911892	301.890530794141	Subarray requested	NONE	NONE
Pointing Dec	17.722218	17.70401360894216	Alternating exposures requested	N	N
Pointing Roll	191.162108	191.3252278806144	Primary exposure time	0.000000	0
SIM focus pos (mm)	-0.684267	-0.6828225247311905			
SIM defocus (mm)	0	0.001444936568705701			
SIM translation stage pos (mm)	-190.132523	-190.1400660498719			
SIM translation stage offset (mm)	0	0.00754346686406393			
Observation start time	112812631.184000	112811598.79122			
Observation start date	2001-07-29T16:49:27	2001-07-29T16:33:18			
Observation end time	112817631.184000	112818226.95398			
Observation end date	2001-07-29T18:12:47	2001-07-29T18:23:46			
Read mode	CONTINUOUS	CONTINUOUS			

2.3 Aspect



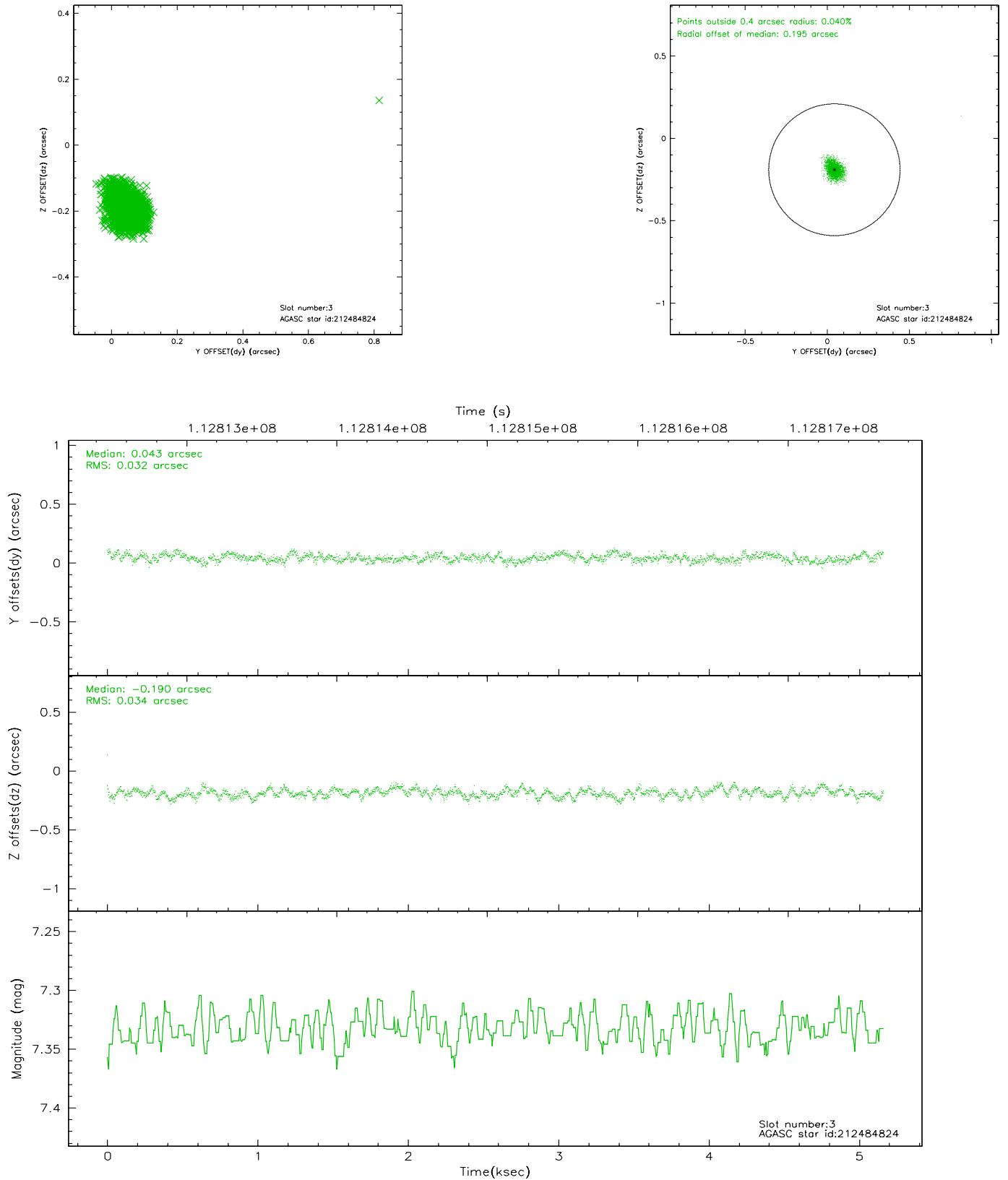


Slot Statistics

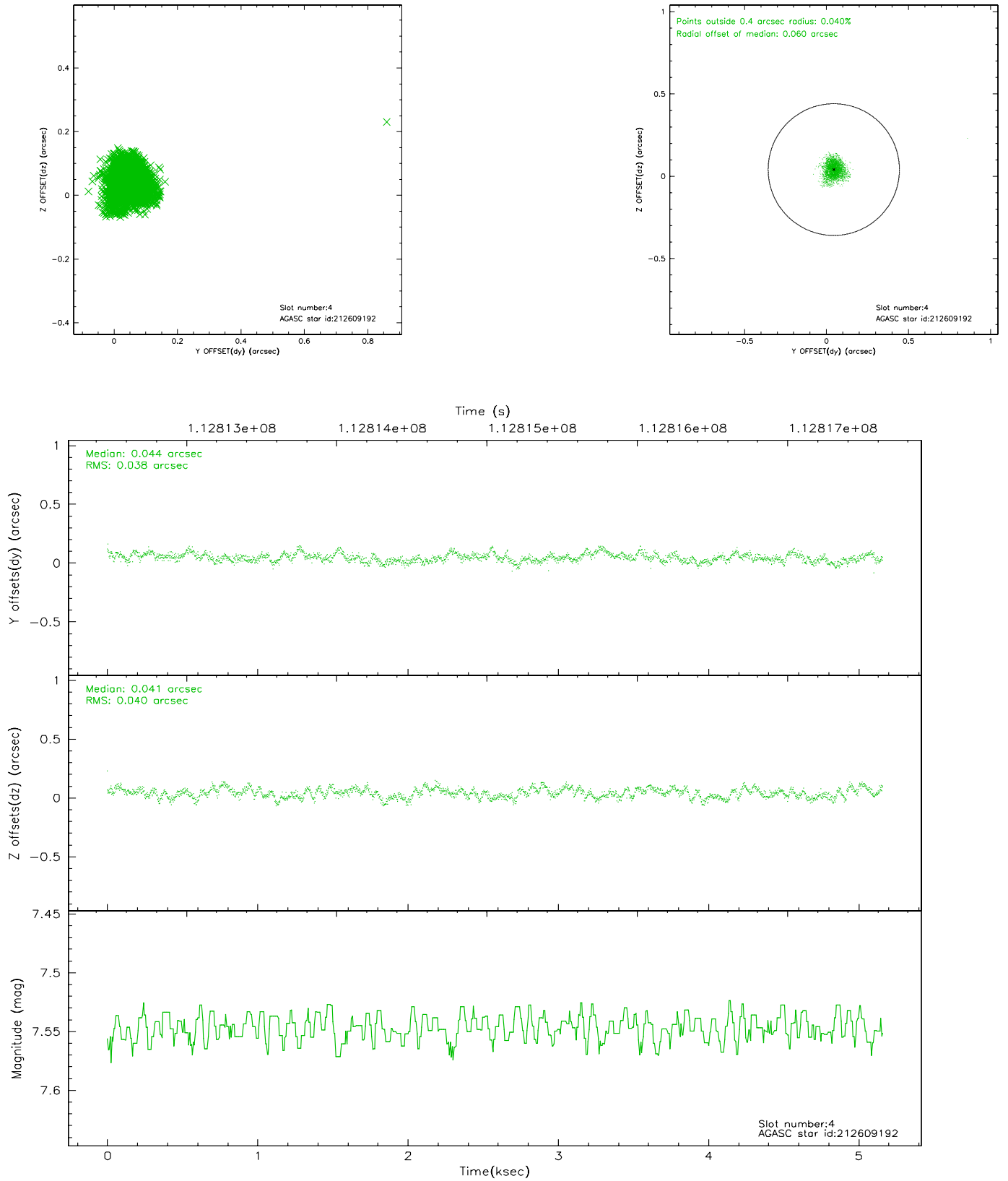
slot	status	id	mag	n_pts	med_dy	med_dz	dr1	dr2	ra	dec	mean_y	mean_z
0	FID	ACIS-S-2	7.11	1260	-0.029	0.021	0.008	0.019	0.000000	0.000000	-755.12	-1726.82
1	FID	ACIS-S-4	7.20	1260	-0.061	0.008	0.005	0.009	0.000000	0.000000	2157.54	180.53
2	FID	ACIS-S-5	7.24	1260	0.059	-0.021	0.008	0.018	0.000000	0.000000	-1806.42	175.39
3	GUIDE	212484824	7.33	2519	0.043	-0.190	0.046	0.075	301.436883	17.597881	1685.18	122.39
4	GUIDE	212609192	7.55	2519	0.044	0.041	0.056	0.092	302.504524	18.225864	-2339.34	-1388.83
5	GUIDE	212468336	7.60	2519	-0.025	0.119	0.059	0.092	301.479163	18.244435	1086.14	-2131.98
6	GUIDE	212475304	7.92	2519	-0.176	0.005	0.057	0.090	301.318620	17.280146	2308.21	1163.60
7	GUIDE	212600320	8.66	2518	0.114	0.034	0.062	0.102	302.393008	18.138679	-1904.74	-1153.04

2.4 Star Slots

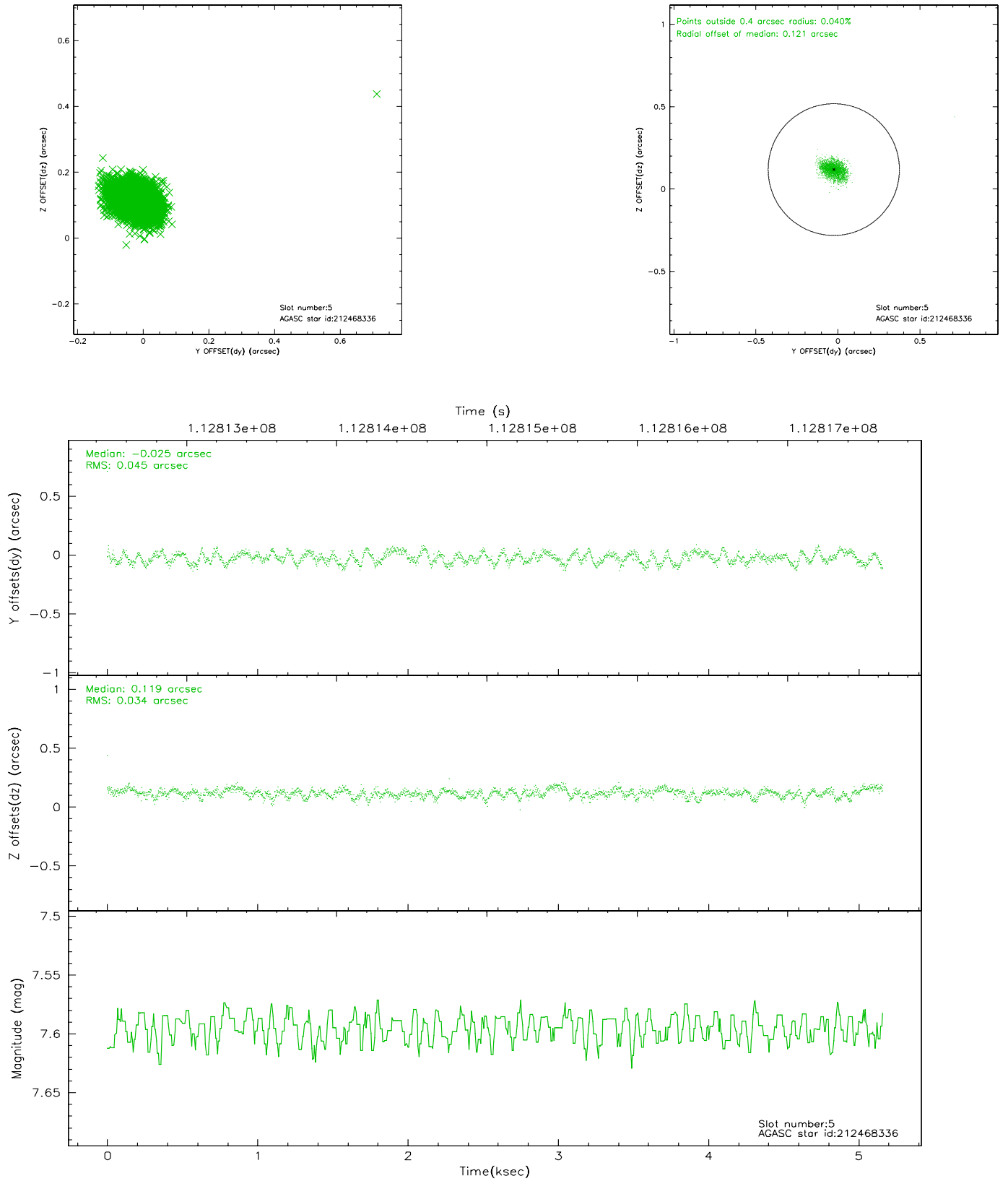
2.4.1 Slot 3



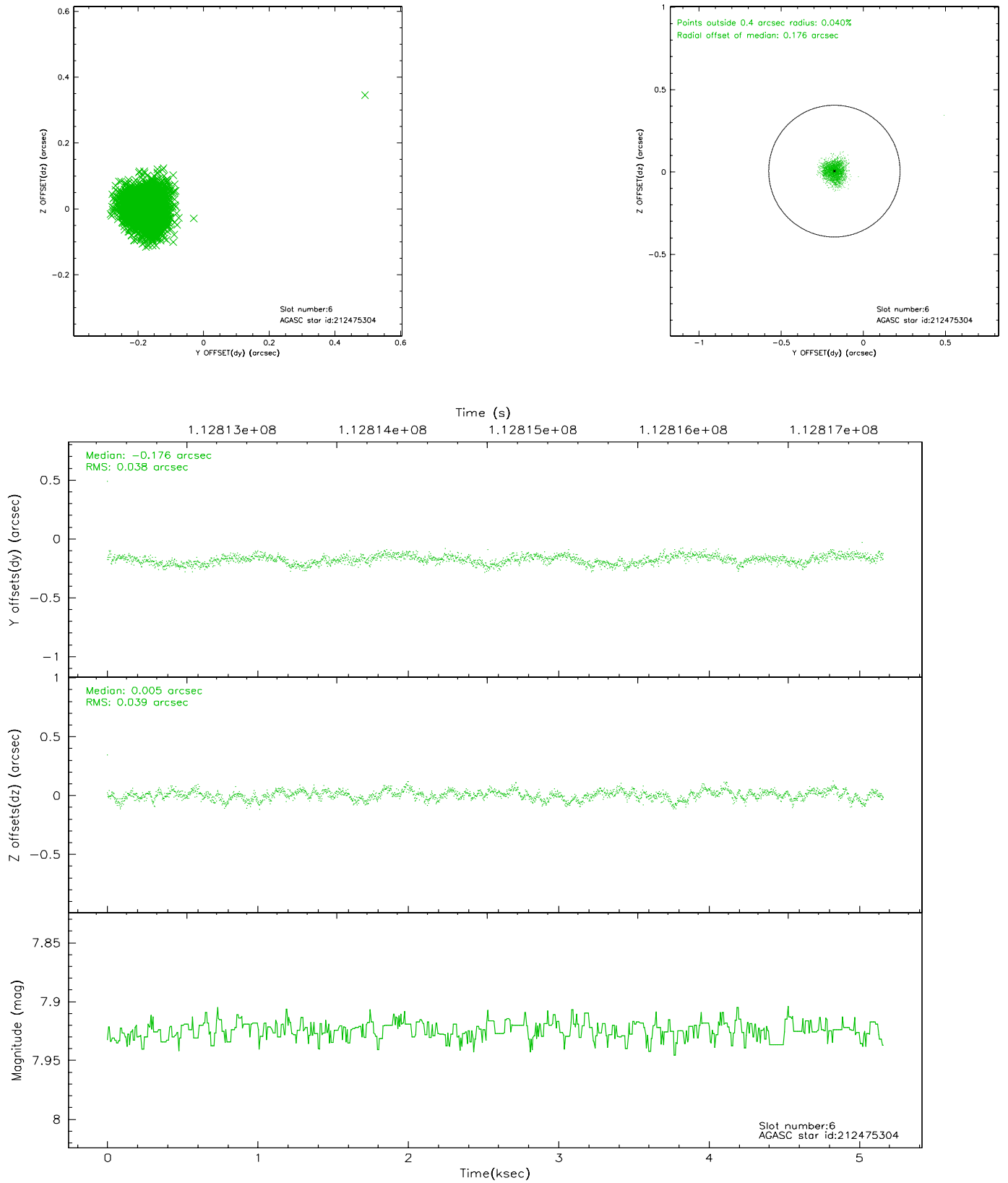
2.4.2 Slot 4



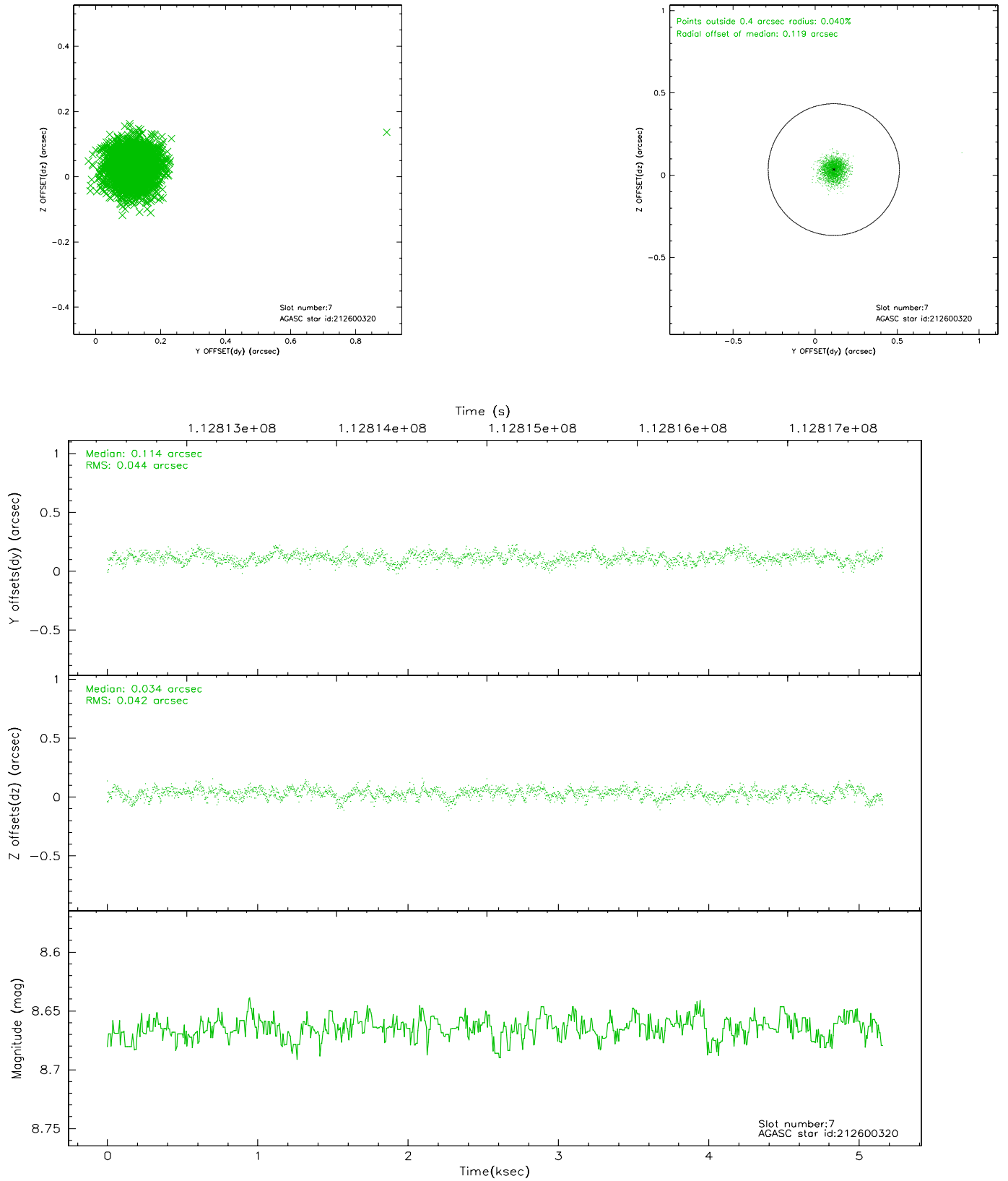
2.4.3 Slot 5



2.4.4 Slot 6

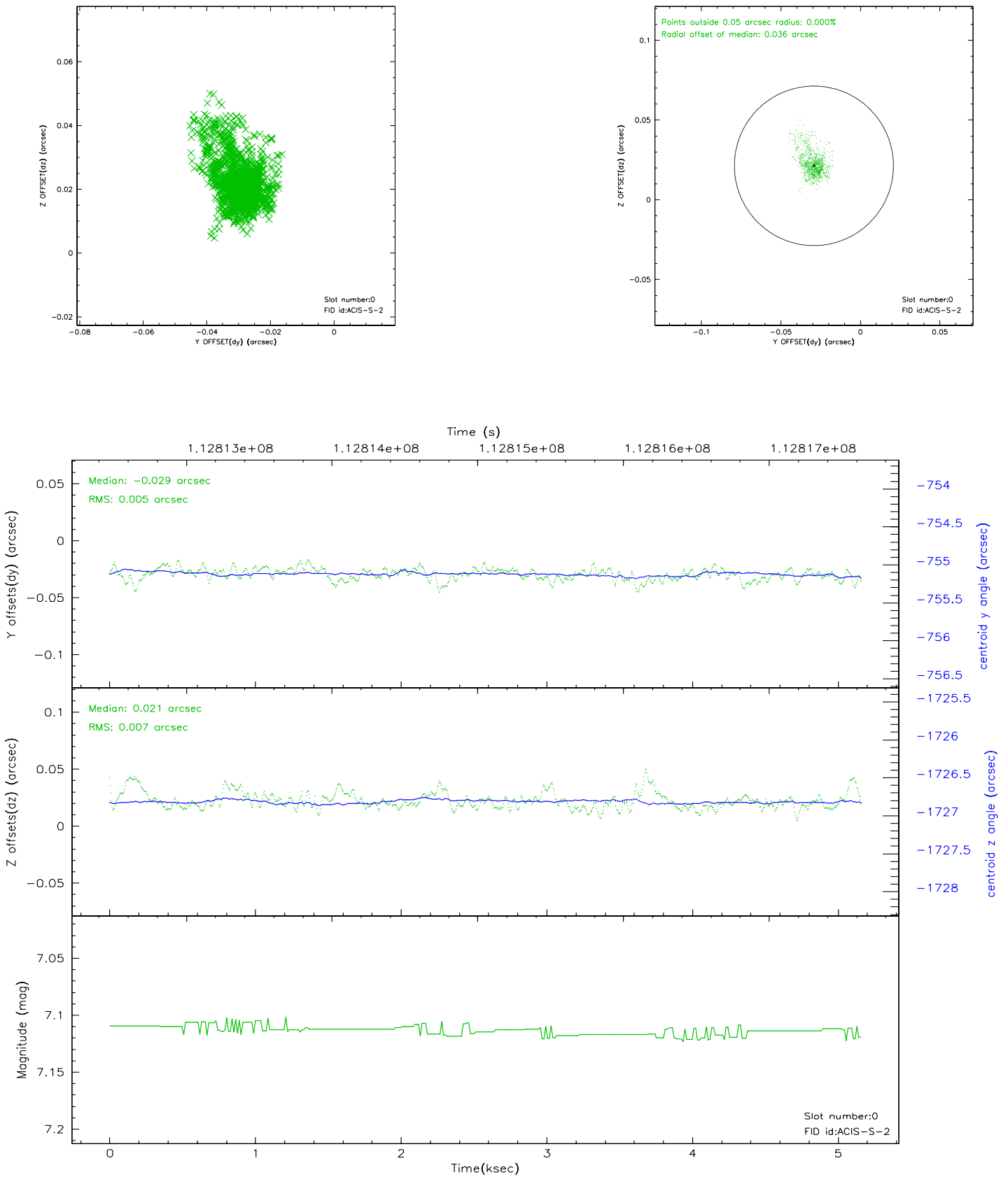


2.4.5 Slot 7

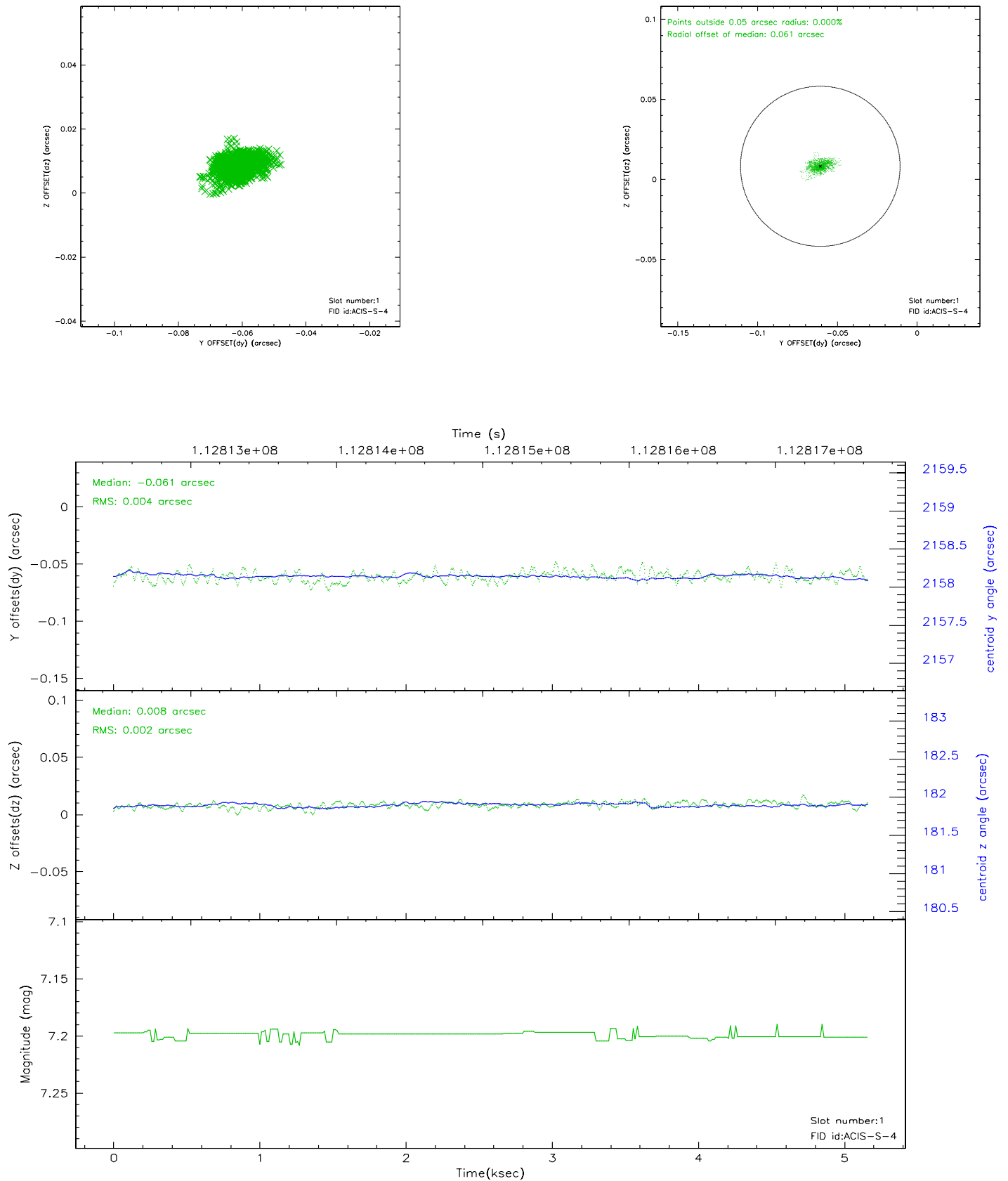


2.5 FID Slots

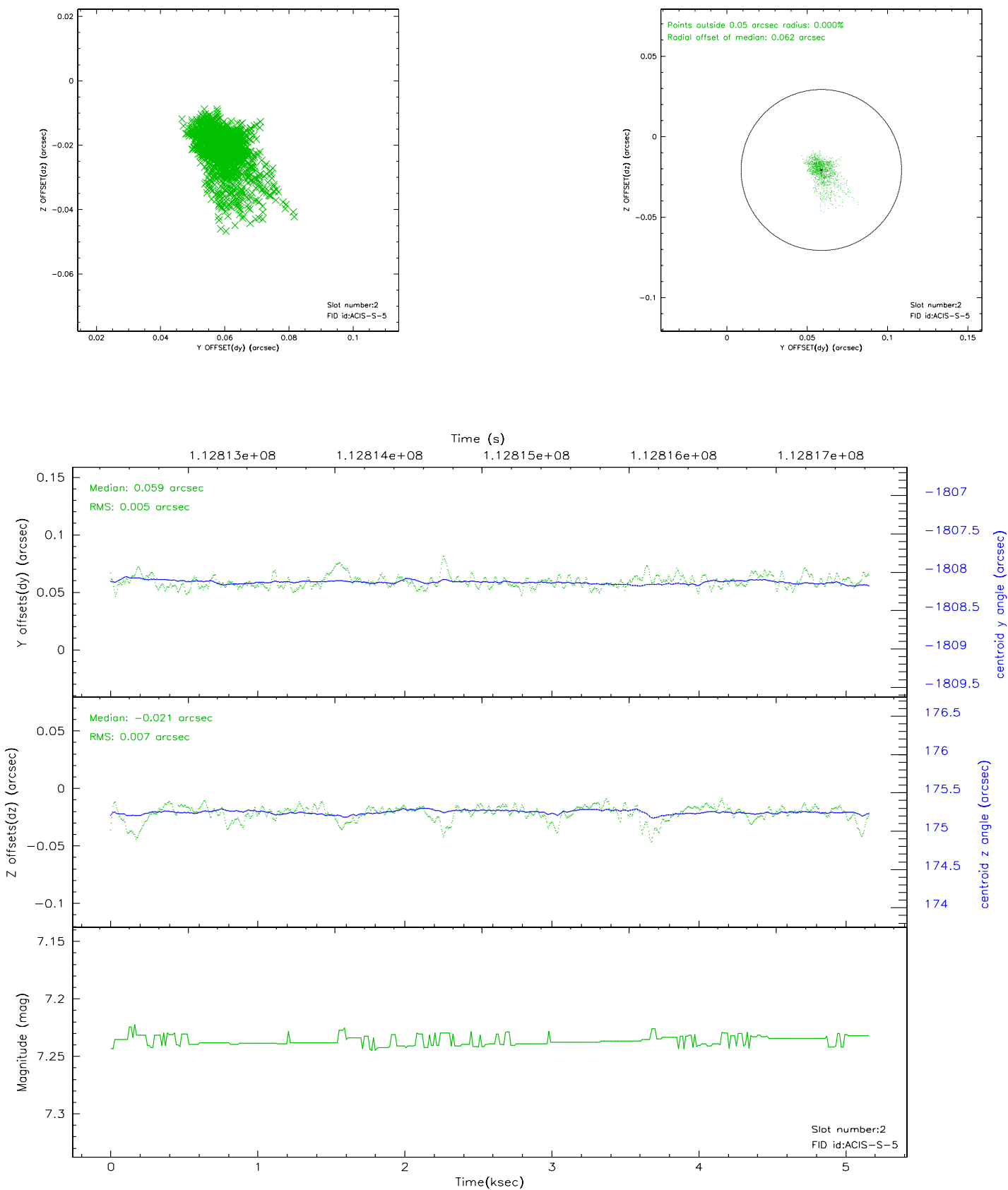
2.5.1 Slot 0



2.5.2 Slot 1



2.5.3 Slot 2



A Summary

A.1 Status

V&V Scientist	Beth Sundheim
V&V Date (YYYY-MM-DD)	2006.12.17
V&V Edition	1
V&V Disposition and Status	OK
V&V Charge Time	5.159

A.2 Comments