

V&V Reference Report

L2 ASCDS Version : 7.6.9

Observation 2048 - L2 Version 001
Chandra X-Ray Center

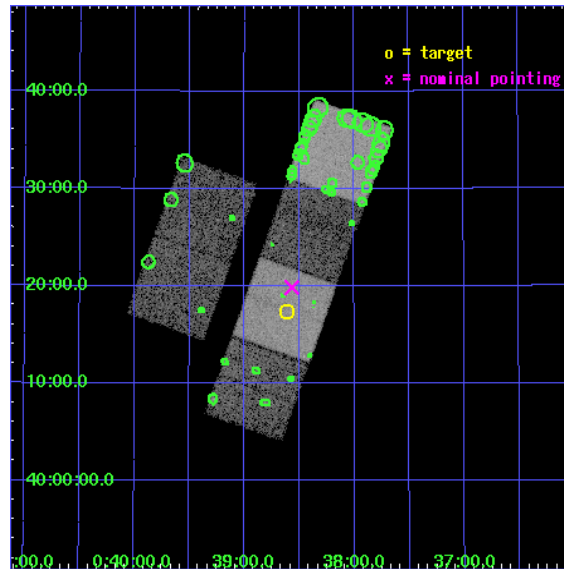
L2 Processing Date : Dec 11 2006

Contents

1	Front	2
2	OBI	3
2.1	OBI	3
2.1.1	Images	3
2.1.2	Bias	3
2.1.3	Parameters	4
2.1.4	Events	4
2.2	Compared Parameters	5
2.3	Aspect	6
2.4	Star Slots	9
2.4.1	Slot 3	9
2.4.2	Slot 4	10
2.4.3	Slot 5	11
2.4.4	Slot 6	12
2.4.5	Slot 7	13
2.5	FID Slots	14
2.5.1	Slot 0	14
2.5.2	Slot 1	15
2.5.3	Slot 2	16
3	Point Sources	17
A	Summary	18
A.1	Status	18
A.2	Comments	18

1 Front

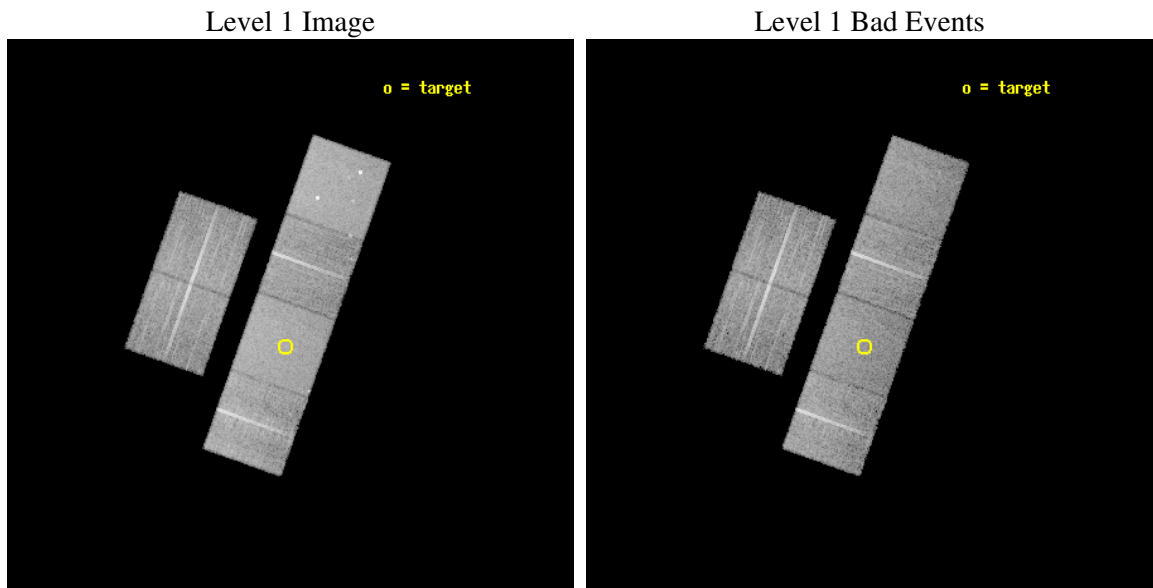
seq_num	600182
obs_id	2048
title	2001: A SPACE CENSUS -- SUPERSOFT X-RAY SOURCES AND OTHER X-RAY SOURCES IN M31
observer	Dr Rosanne Di Stefano
object	M31_1
dtcycle	0
cycle	P
ra_targ	9.652083
dec_targ	40.288889
ra_nom	9.6419045815343
dec_nom	40.331152033841
roll_nom	109.58411798112
revision	2
ontime	13948.800012991
livetime	13772.171908267
ontime2	13948.800012991
ontime3	13948.800012991
ontime5	13948.800012991
ontime6	13948.800012991
ontime7	13948.800012991
ontime8	13948.800012991
l2events	131402



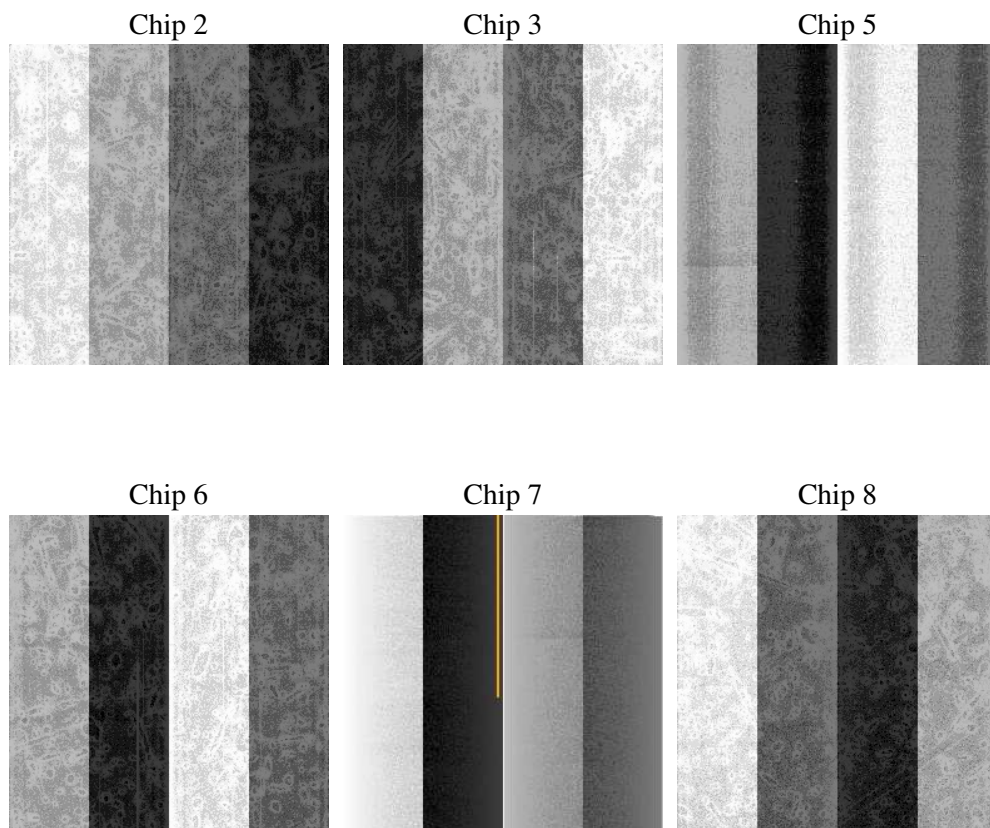
2 OBI

2.1 OBI

2.1.1 Images



2.1.2 Bias



2.1.3 Parameters

obi_num	0
ascdsver	7.6.9
caldsver	3.2.4
date	2006-12-11T12:18:06
revision	2

sched_exp_time	14000.000000
ontime	13955.736185431
ontime2	13955.736155495
ontime3	13955.736155495
ontime5	13955.736185431
ontime6	13955.736155495
ontime7	13955.736185431
ontime8	13955.736155495
l1events	628921

2.1.4 Events

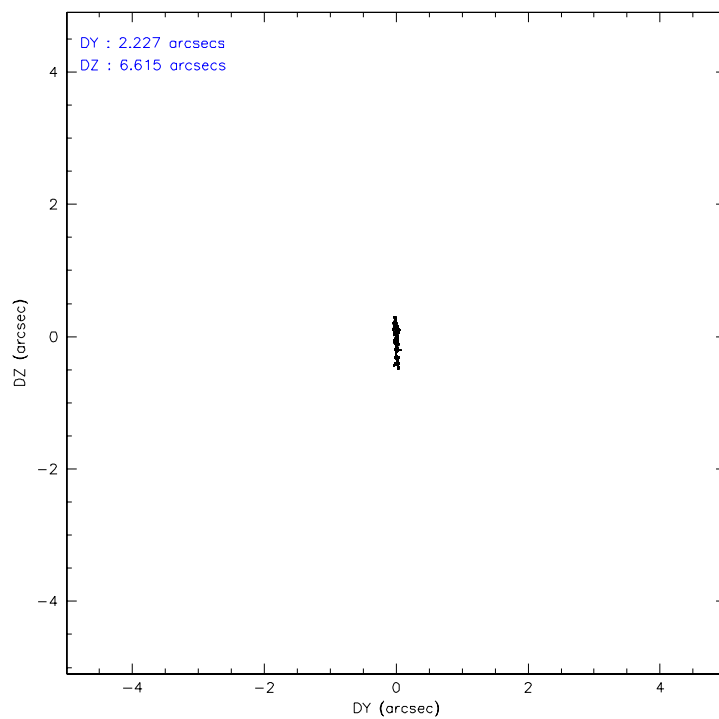
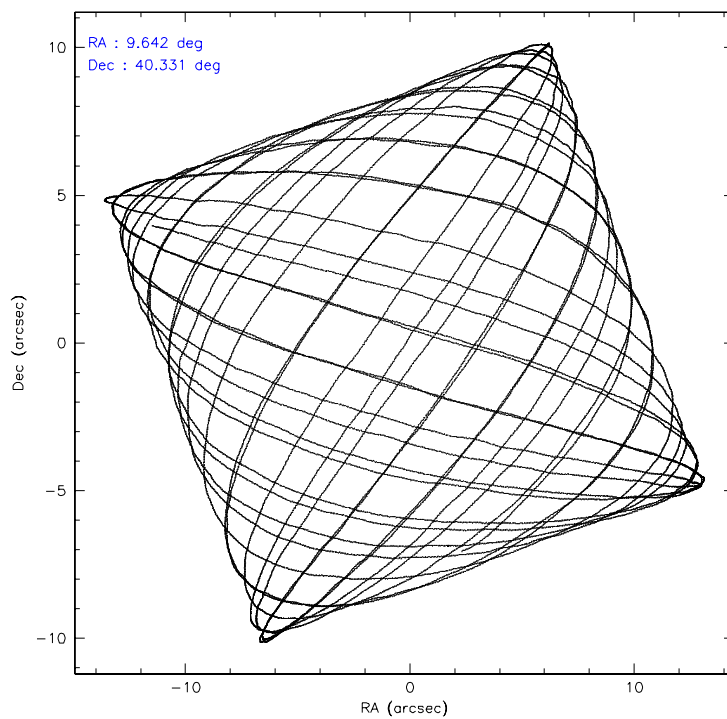
	ccd 2	ccd 3	ccd 5	ccd 6	ccd 7	ccd 8
level 1 events	94862	88721	127113	91142	114569	112514
rejected events	84800	78826	70801	80962	70740	90288
rejected %	89%	88%	55%	88%	61%	80%

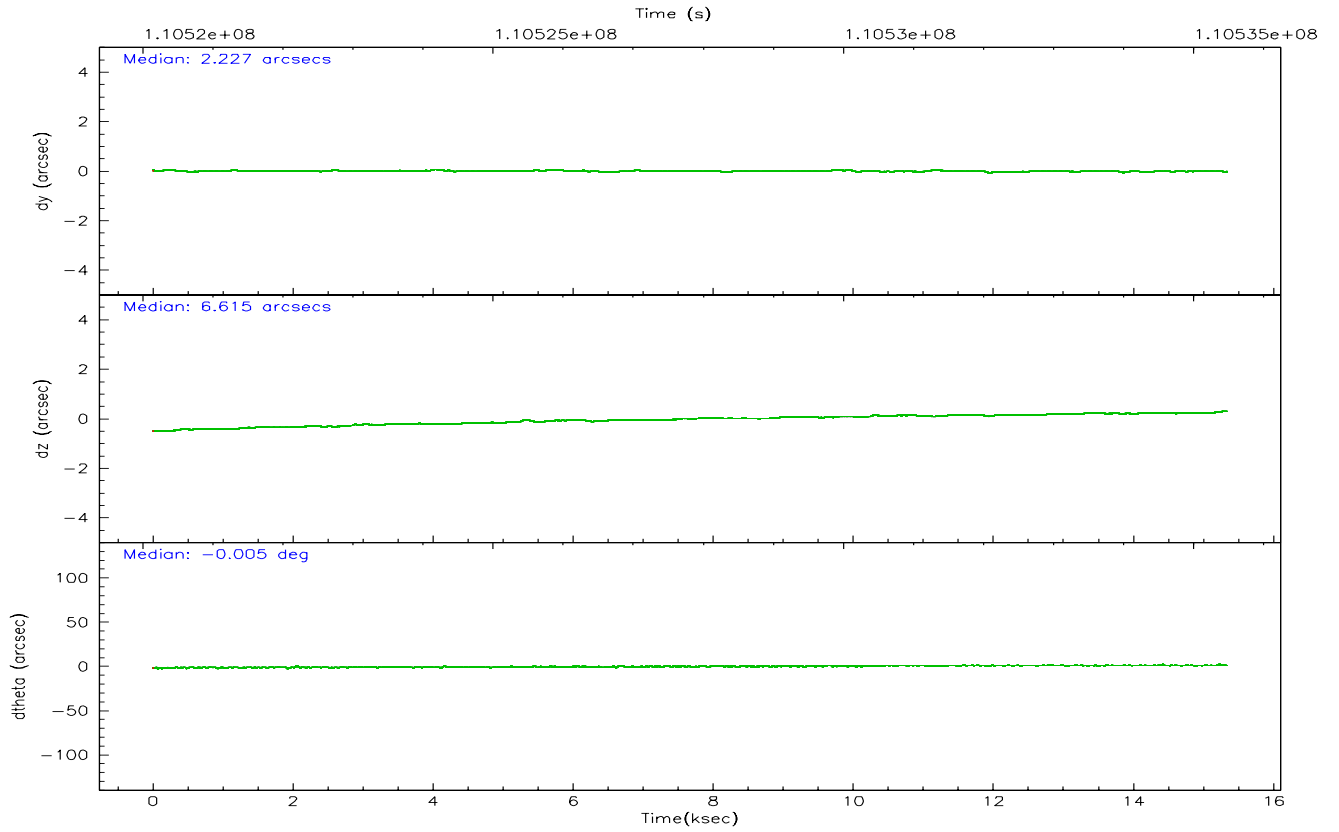
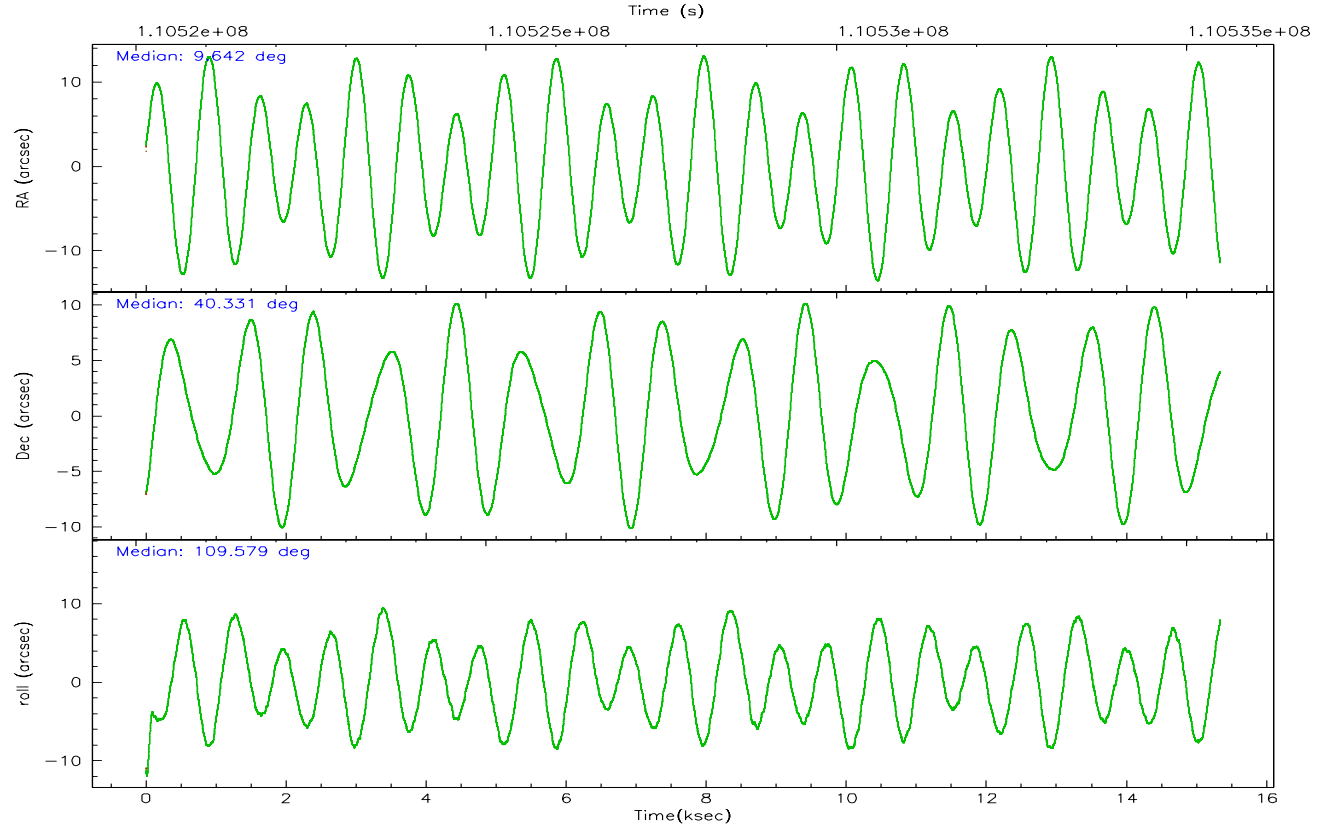
	ccd 2	ccd 3	ccd 5	ccd 6	ccd 7	ccd 8
grade 0 events	4132	4133	5138	4089	2754	7088
	4%	4%	4%	4%	2%	6%
grade 1 events	46	63	192	39	67	56
	0%	0%	0%	0%	0%	0%
grade 2 events	2209	2023	16926	2089	10652	4881
	2%	2%	13%	2%	9%	4%
grade 3 events	953	936	1290	1015	2330	2477
	1%	1%	1%	1%	2%	2%
grade 4 events	988	996	1347	987	2276	2167
	1%	1%	1%	1%	1%	1%
grade 5 events	3290	3507	6255	3841	7611	4786
	3%	3%	4%	4%	6%	4%
grade 6 events	1781	1812	31641	2008	25835	5620
	1%	2%	24%	2%	22%	4%
grade 7 events	81463	75251	64324	77074	63044	85439
	85%	84%	50%	84%	55%	75%

2.2 Compared Parameters

Parameter	Planned	Actual	Parameter	Planned	Actual
Instrument	ACIS	ACIS	Obspar format version number	6	6
Detector	ACIS-235678	ACIS-235678	Obspar file type	PREDICTED	ACTUAL
Grating	NONE	NONE	Obspar update status	NONE	UPDATED
Data mode	FAINT	FAINT	Number of optional ACIS chips dropped	0	0
Observation mode	POINTING	POINTING	On-chip summing requested	N	N
Pointing RA	9.669353	9.641904581534275	Subarray requested	NONE	NONE
Pointing Dec	40.313673	40.33115203384051	Alternating exposures requested	N	N
Pointing Roll	109.409730	109.5841179811186	Primary exposure time	0.000000	3.2
SIM focus pos (mm)	-0.684267	-0.6828225247311905			
SIM defocus (mm)	0	0.001444936568705701			
SIM translation stage pos (mm)	-190.132523	-190.145094680475			
SIM translation stage offset (mm)	0	0.01257209746719923			
Observation start time	110521483.184000	110519952.90148			
Observation start date	2001-07-03T04:23:39	2001-07-03T03:59:12			
Observation end time	110535483.184000	110535620.02709			
Observation end date	2001-07-03T08:16:59	2001-07-03T08:20:20			
Read mode	TIMED	TIMED			

2.3 Aspect



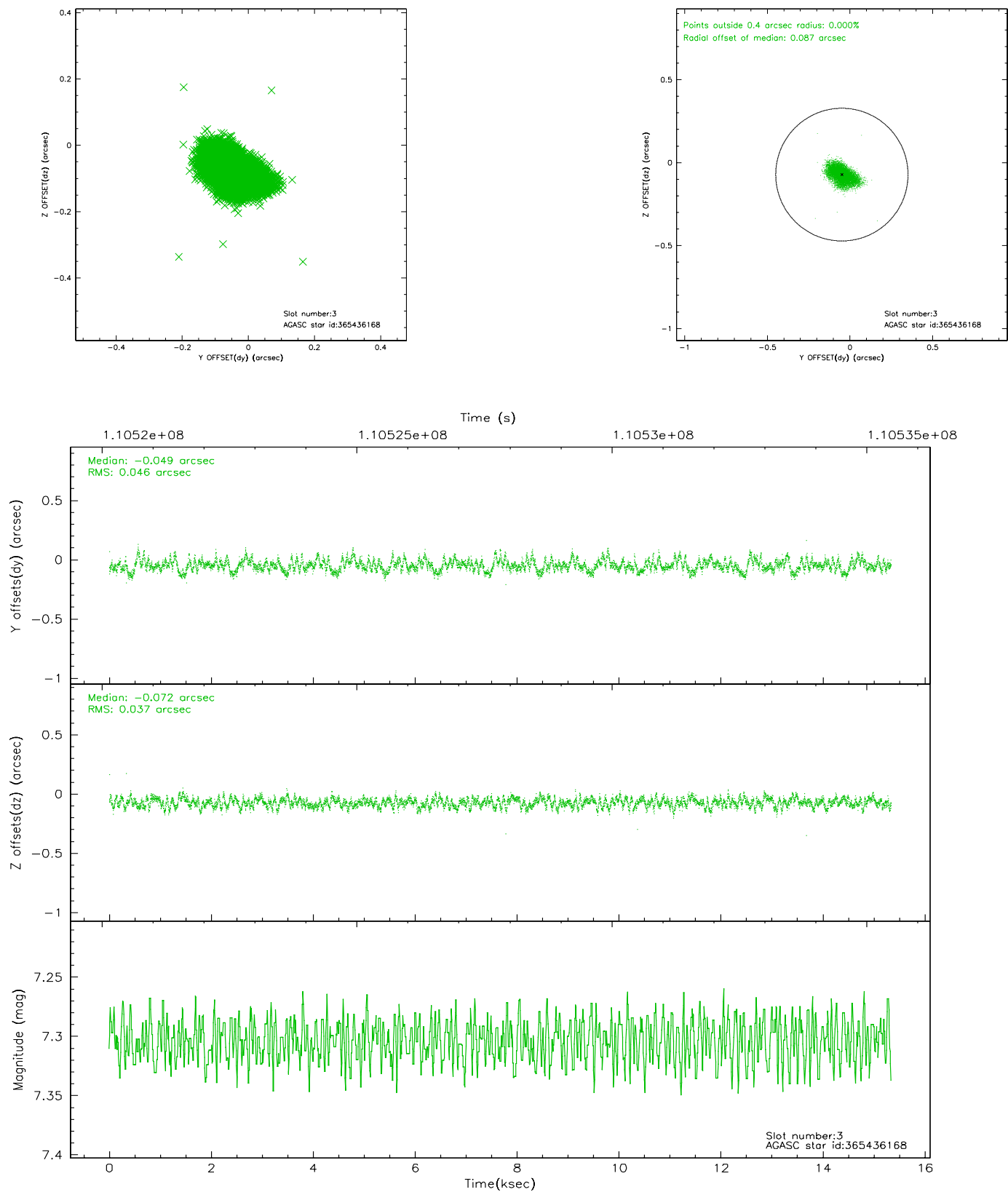


Slot Statistics

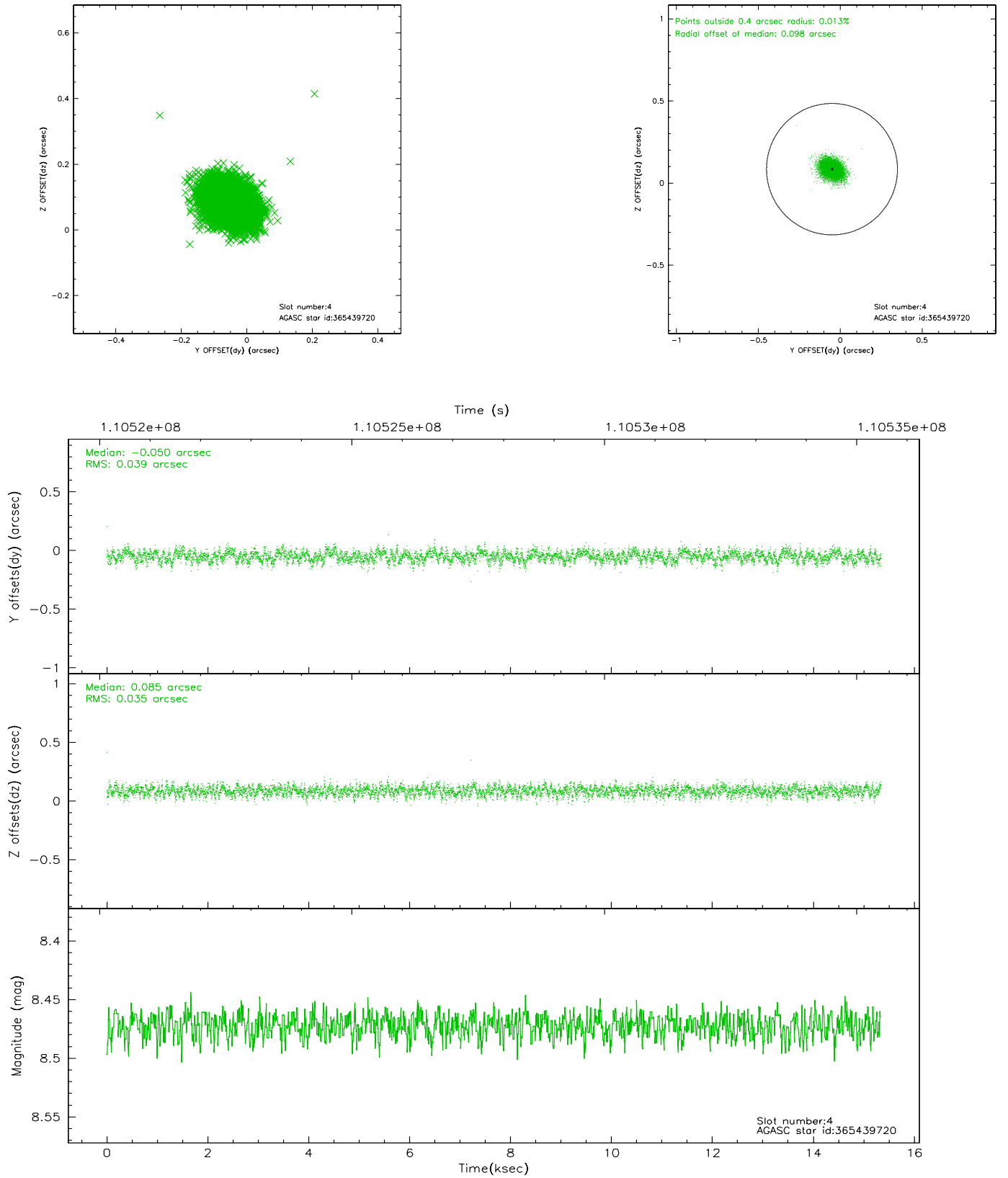
slot	status	id	mag	n_pts	med_dy	med_dz	dr1	dr2	ra	dec	mean_y	mean_z
0	FID	ACIS-S-2	7.11	3741	-0.015	0.028	0.007	0.012	0.000000	0.000000	-754.84	-1727.61
1	FID	ACIS-S-4	7.20	3741	-0.088	-0.000	0.006	0.011	0.000000	0.000000	2158.21	180.59
2	FID	ACIS-S-5	7.24	3740	0.071	-0.019	0.006	0.011	0.000000	0.000000	-1807.24	174.52
3	GUIDE	365436168	7.30	7482	-0.049	-0.072	0.062	0.102	9.360006	40.332380	346.25	777.83
4	GUIDE	365439720	8.47	7480	-0.050	0.085	0.056	0.090	9.704623	40.431022	365.69	-231.27
5	GUIDE	367144424	8.66	7481	0.035	0.261	0.073	0.116	10.464515	40.309136	-732.01	-2056.43
6	GUIDE	365435256	8.89	7479	0.161	-0.130	0.074	0.119	9.519215	39.682445	-2005.43	1146.92
7	GUIDE	365438400	9.30	7477	-0.099	-0.141	0.095	0.149	8.893214	40.450373	1178.37	1838.92

2.4 Star Slots

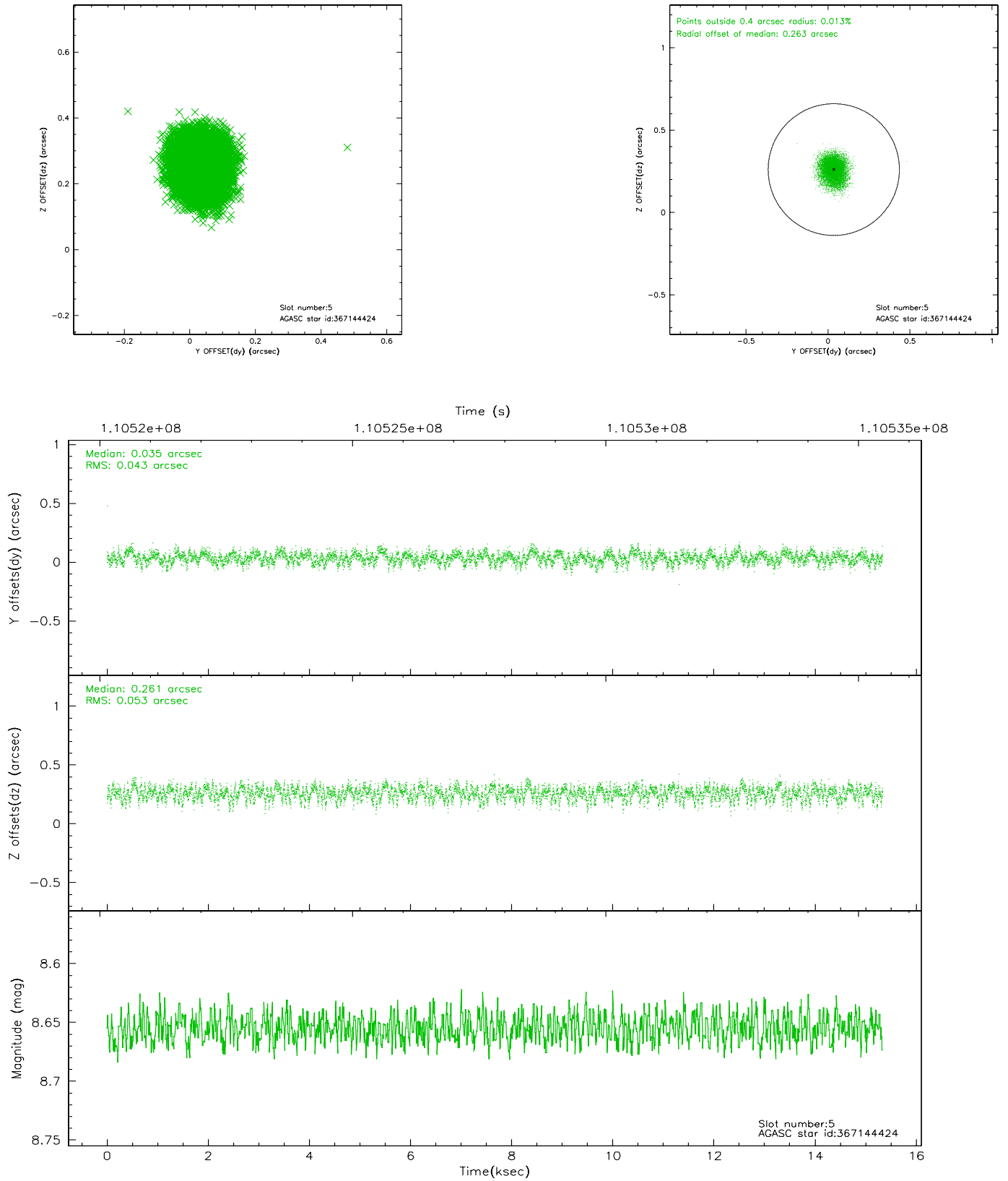
2.4.1 Slot 3



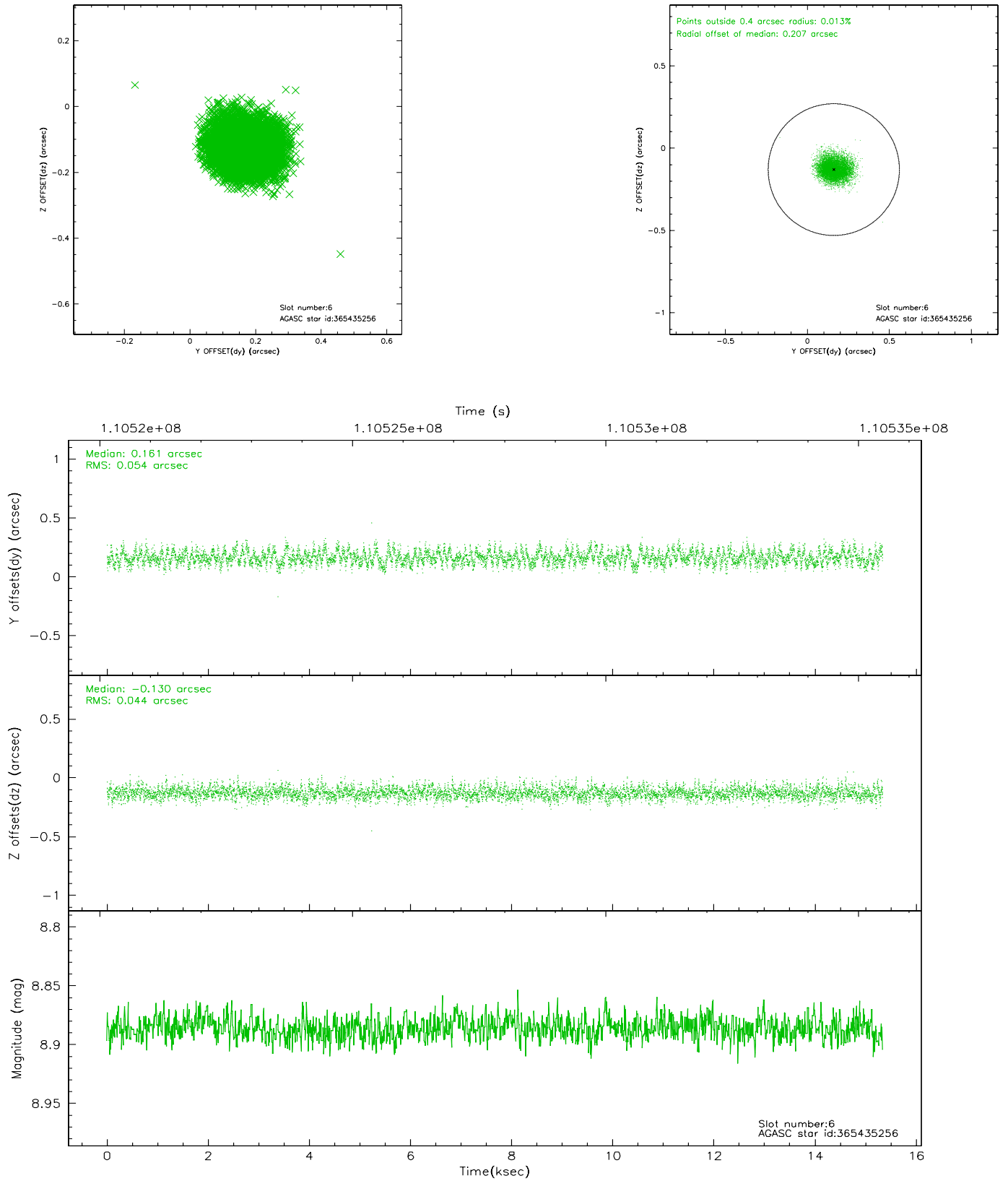
2.4.2 Slot 4



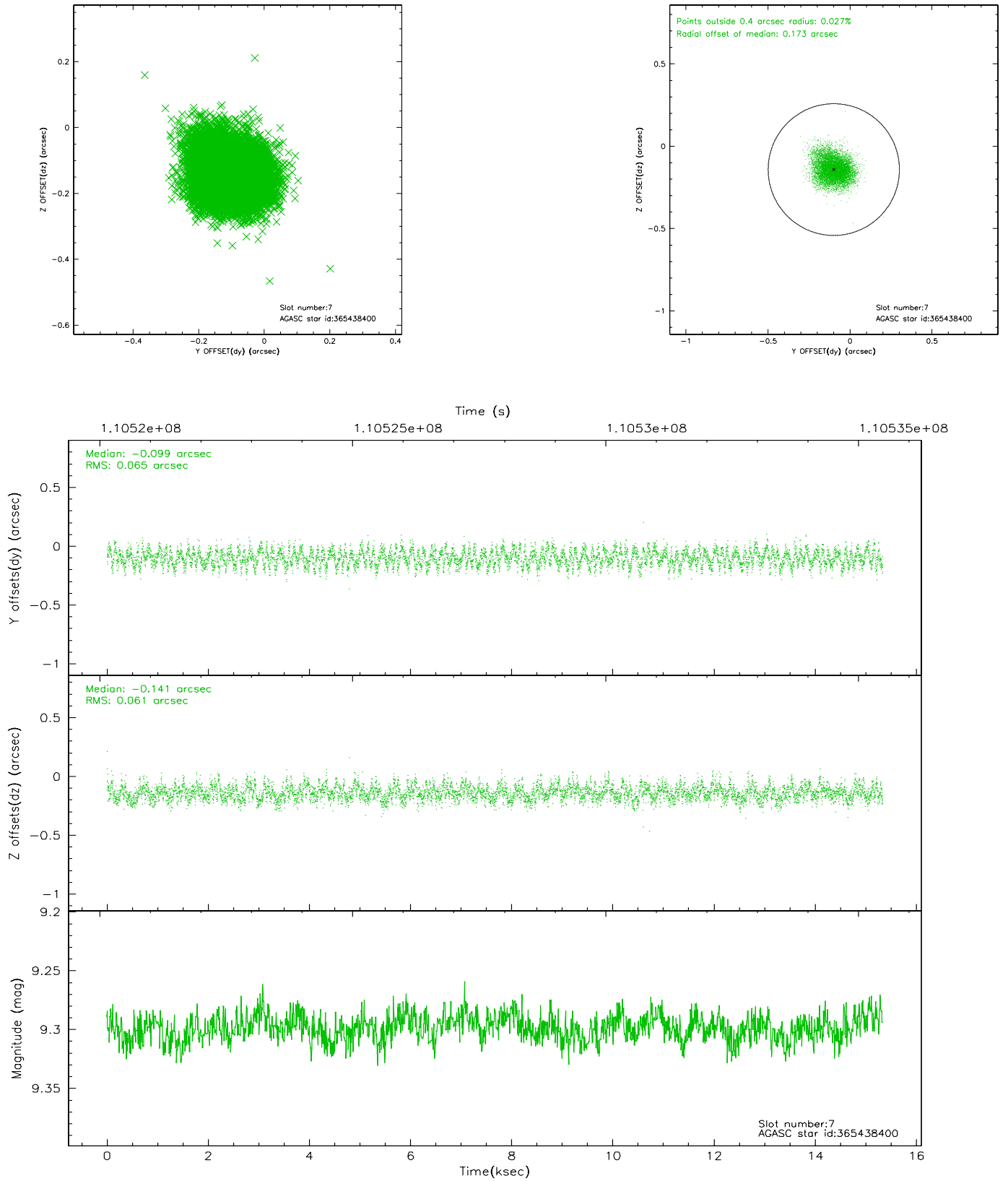
2.4.3 Slot 5



2.4.4 Slot 6

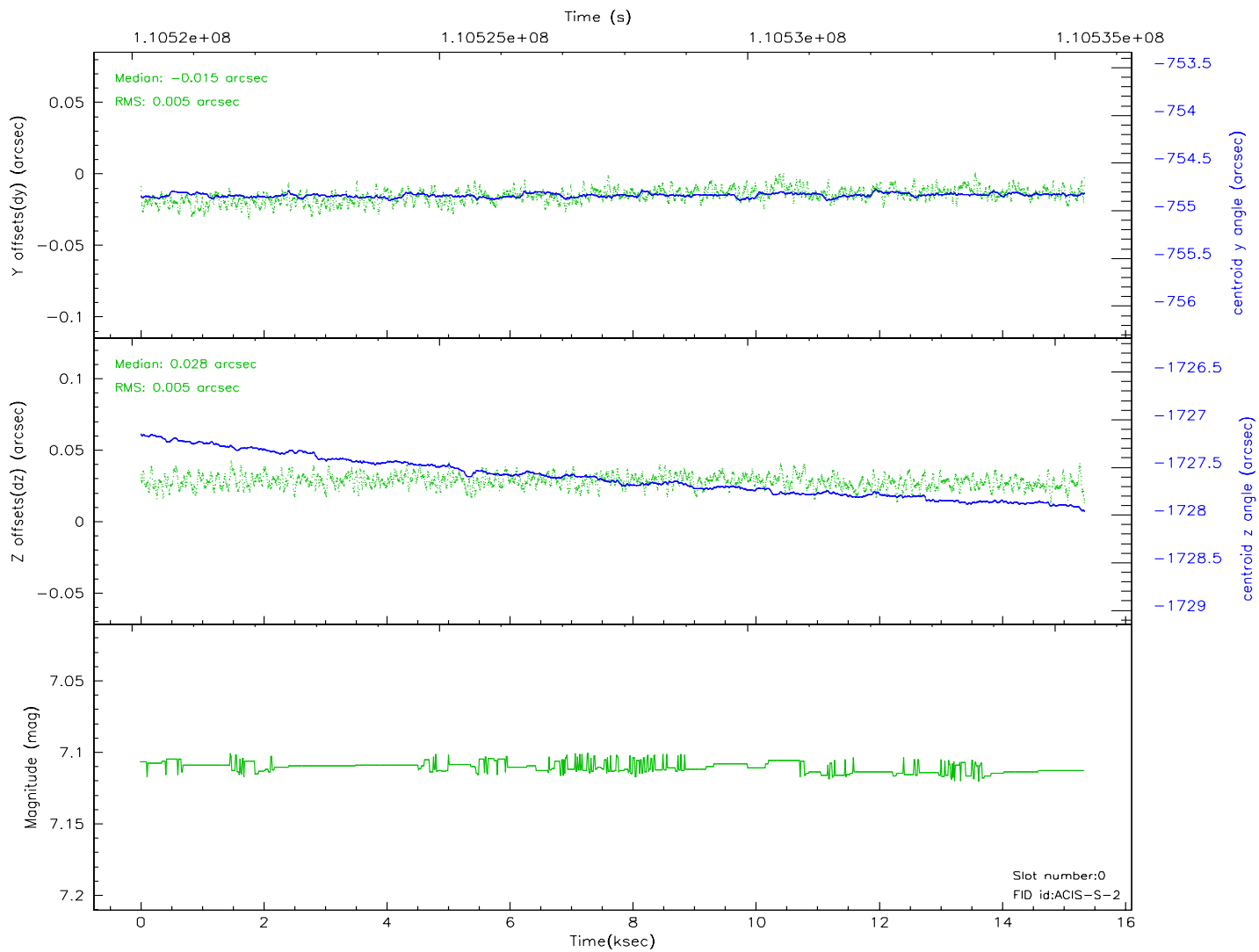
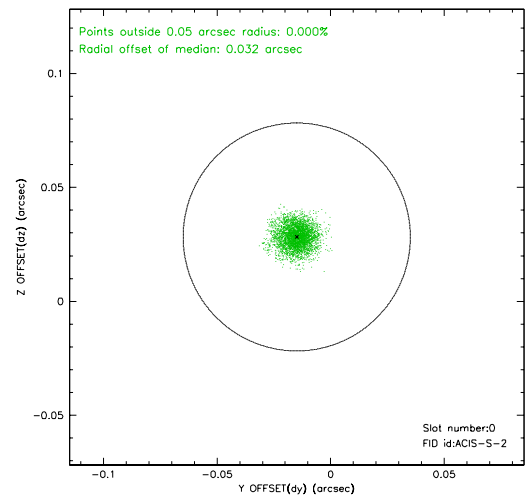
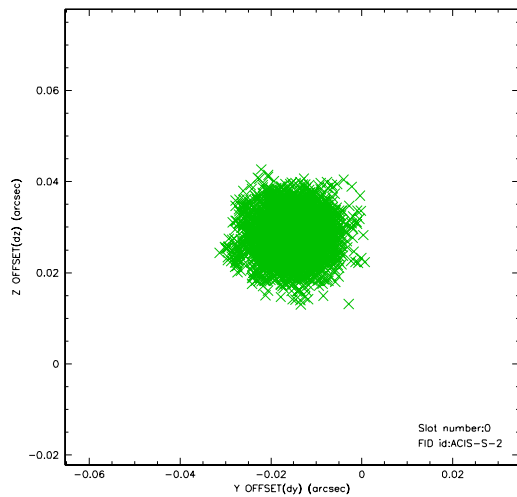


2.4.5 Slot 7

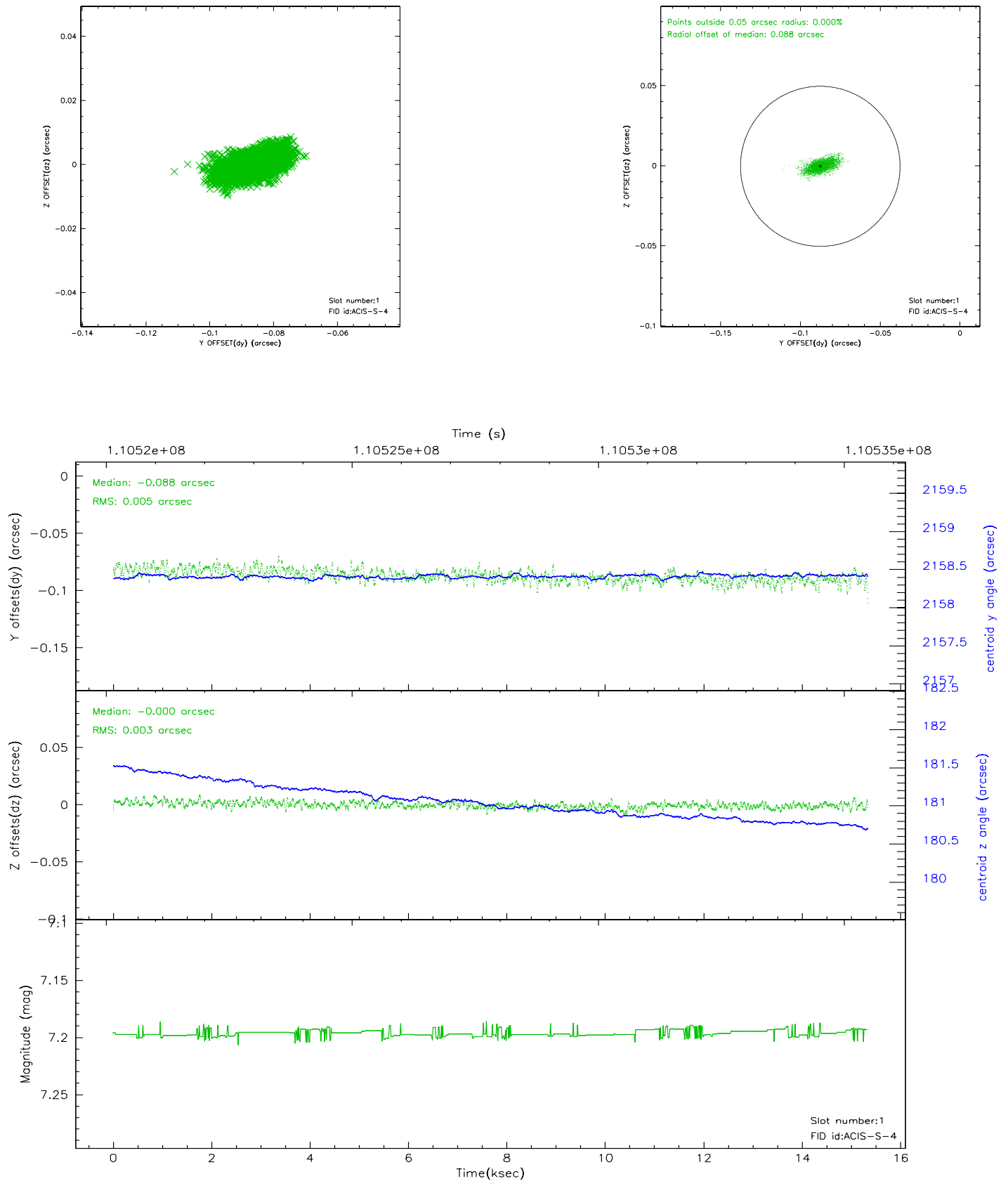


2.5 FID Slots

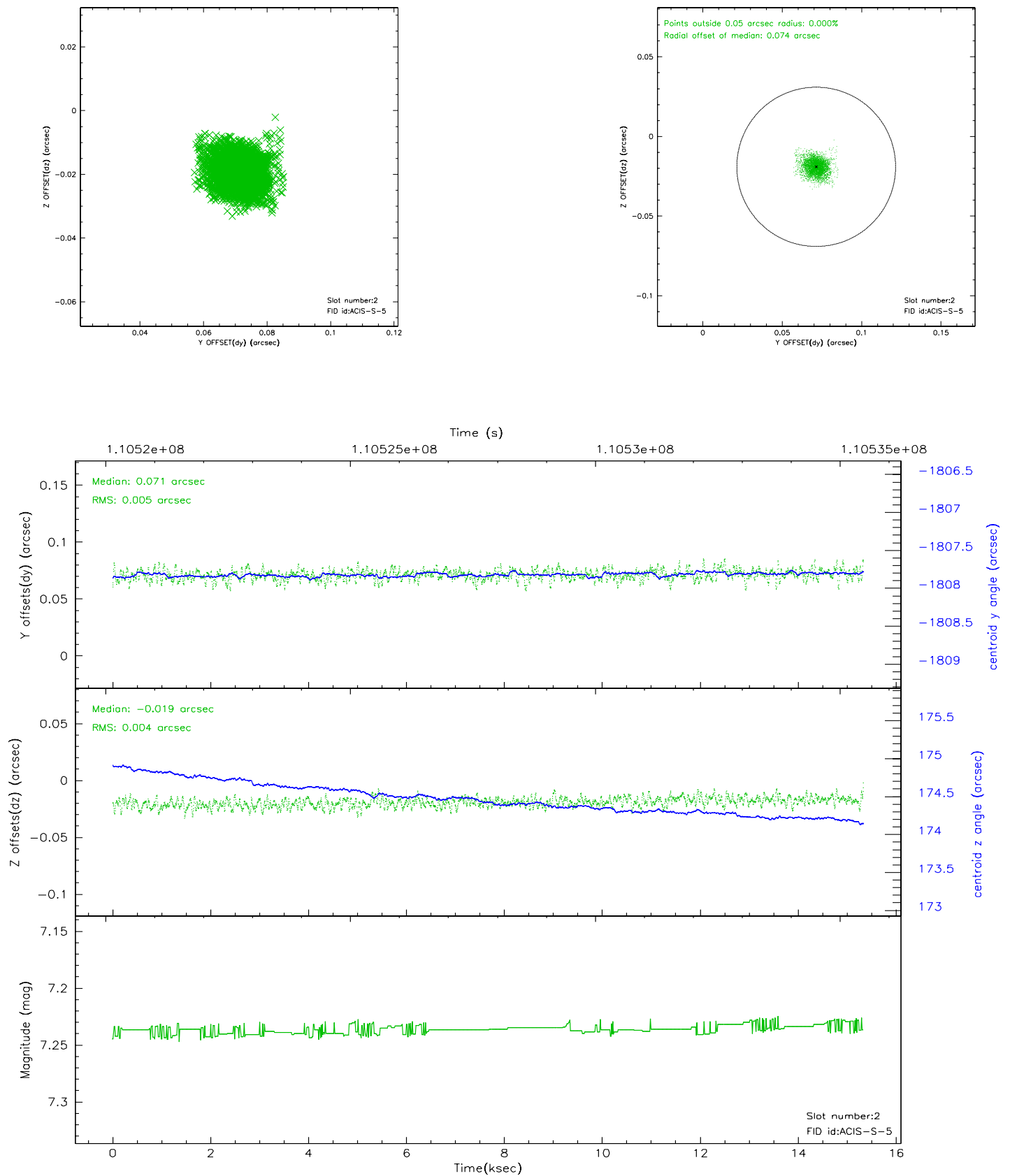
2.5.1 Slot 0



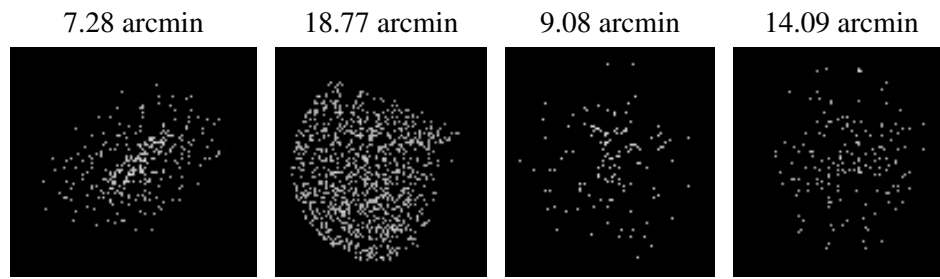
2.5.2 Slot 1



2.5.3 Slot 2



3 Point Sources



A Summary

A.1 Status

V&V Scientist	Jen Lauer
V&V Date (YYYY-MM-DD)	2006.12.11
V&V Edition	1
V&V Disposition and Status	OK
V&V Charge Time	14

A.2 Comments

Follows obs2047 by 119 days