

V&V Reference Report

L2 ASCDS Version : 7.6.9

Observation 1888 - L2 Version 002
Chandra X-Ray Center

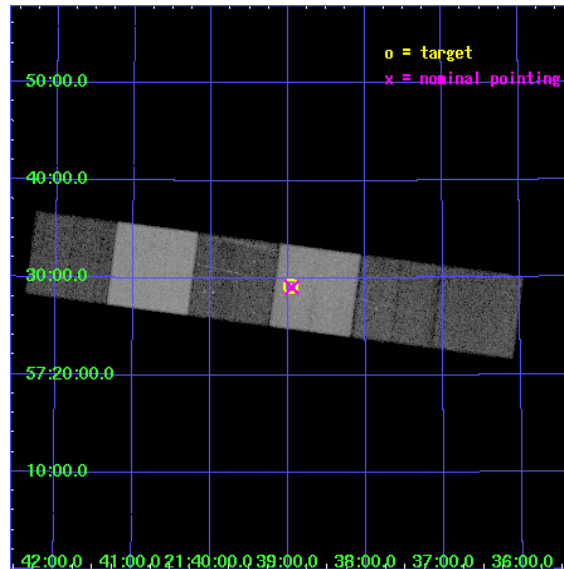
L2 Processing Date : Nov 17 2006

Contents

1	Front	2
2	OBI	3
2.1	OBI	3
2.1.1	Images	3
2.1.2	Bias	3
2.1.3	Parameters	4
2.1.4	Events	4
2.2	Compared Parameters	5
2.3	Aspect	6
2.4	Star Slots	9
2.4.1	Slot 3	9
2.4.2	Slot 4	10
2.4.3	Slot 5	11
2.4.4	Slot 6	12
2.4.5	Slot 7	13
2.5	FID Slots	14
2.5.1	Slot 1	14
3	Gratings	15
3.1	HEG Arm	15
3.2	MEG Arm	17
A	Summary	19
A.1	Status	19
A.2	Comments	19

1 Front

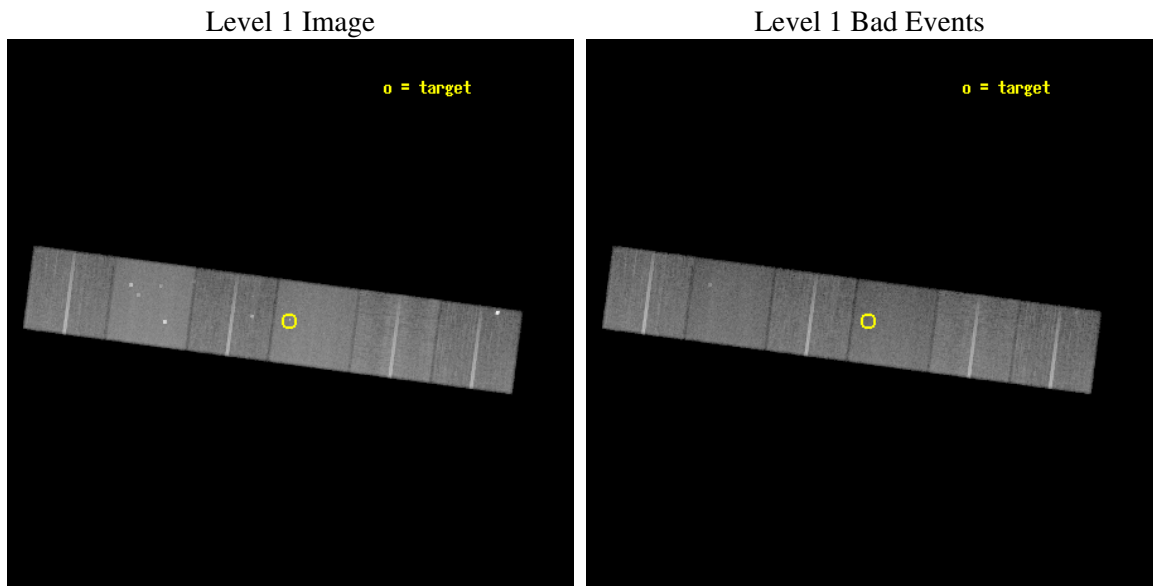
seq_num	200116
obs_id	1888
title	HIGH RESOLUTION SPECTROSCOPY AND VARIABILITY OF THE TRAPEZIUM-LIKE SYSTEM HD 206267 IN IC 1396
observer	DR. NORBERT SCHULZ
object	HD 206267
dtcycle	0
cycle	P
ra_targ	324.739583
dec_targ	57.486389
ra_nom	324.73752423741
dec_nom	57.484509081789
roll_nom	7.5063549847656
revision	3
ontime	34561.5
livetime	34123.861476563
ontime4	34561.5
ontime5	34561.5
ontime6	34561.5
ontime7	34561.5
ontime8	34561.5
ontime9	34558.259009823
l2events	312187



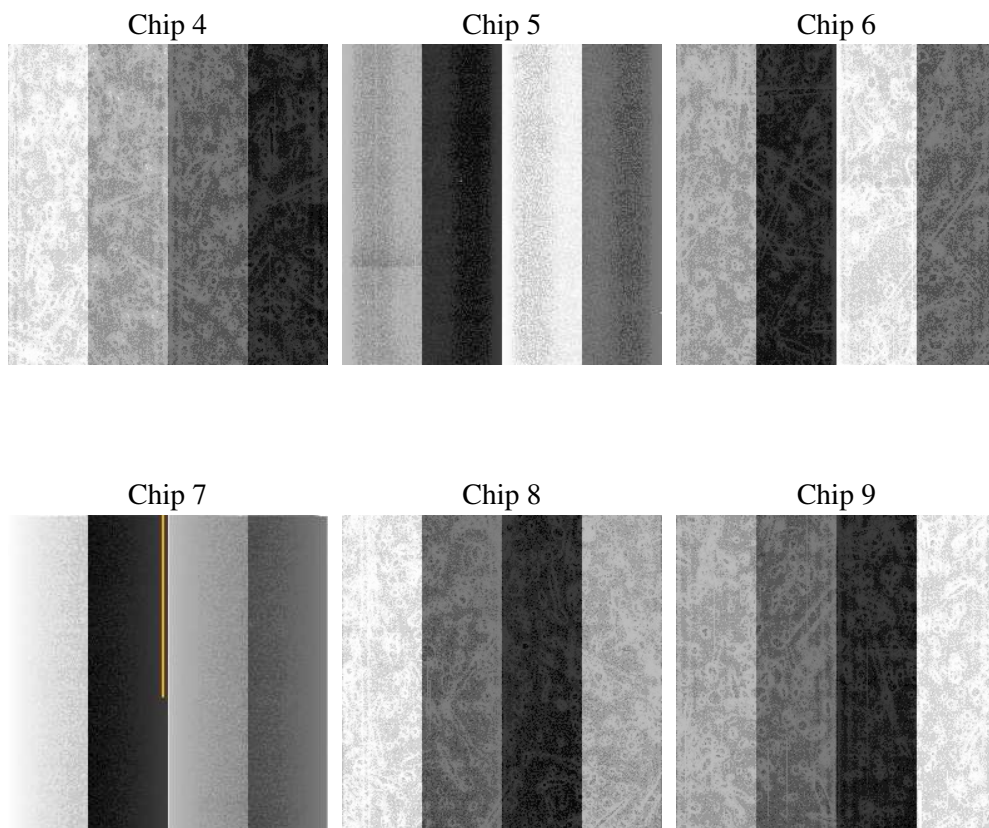
2 OBI

2.1 OBI

2.1.1 Images



2.1.2 Bias



2.1.3 Parameters

obi_num	0
ascdsver	7.6.9
caldsver	3.2.4
date	2006-11-15T18:31:13
revision	3

sched_exp_time	34700.000000
ontime	34626.812445432
ontime4	34623.571425363
ontime5	34626.81241551
ontime6	34626.81241551
ontime7	34626.812445432
ontime8	34626.81241551
ontime9	34623.571425334
l1events	1531918

2.1.4 Events

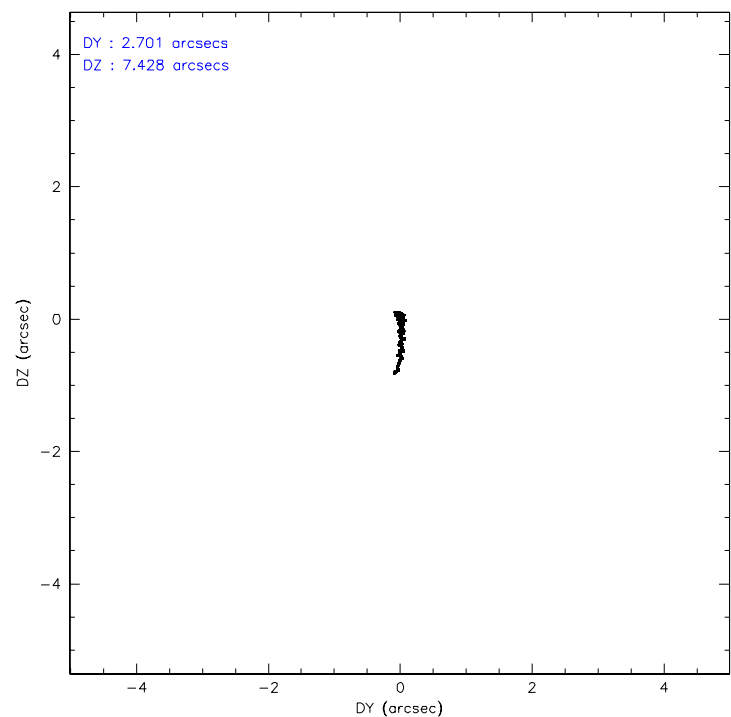
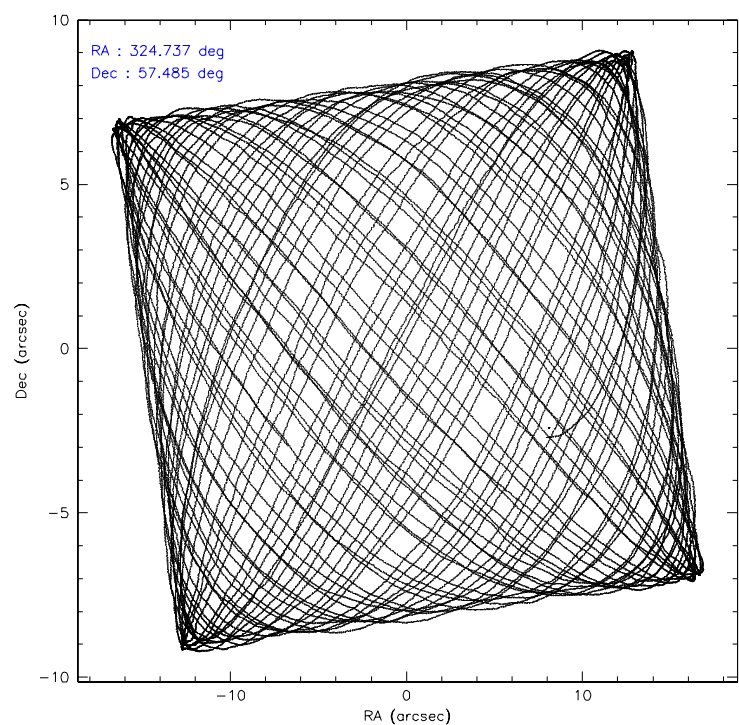
	ccd 4	ccd 5	ccd 6	ccd 7	ccd 8	ccd 9		ccd 4	ccd 5	ccd 6	ccd 7	ccd 8	ccd 9
level 1 events	234863	301621	218485	273341	274648	228960	grade 0 events	10155	12754	11925	6293	17217	20521
rejected events	209861	168426	191959	168634	220675	193604		4%	4%	5%	2%	6%	8%
rejected %	89%	55%	87%	61%	80%	84%	grade 1 events	88	237	101	159	157	144
								0%	0%	0%	0%	0%	0%
							grade 2 events	5937	40136	4877	25314	11637	5025
								2%	13%	2%	9%	4%	2%
							grade 3 events	2392	3221	2484	5835	5697	2546
								1%	1%	1%	2%	2%	1%
							grade 4 events	2173	2826	2478	5648	5409	2390
								0%	0%	1%	2%	1%	1%
							grade 5 events	7556	14959	9048	18781	11689	9360
								3%	4%	4%	6%	4%	4%
							grade 6 events	4392	74468	4806	61800	14107	4943
								1%	24%	2%	22%	5%	2%
							grade 7 events	202170	153020	182766	149511	208735	184031
								86%	50%	83%	54%	76%	80%

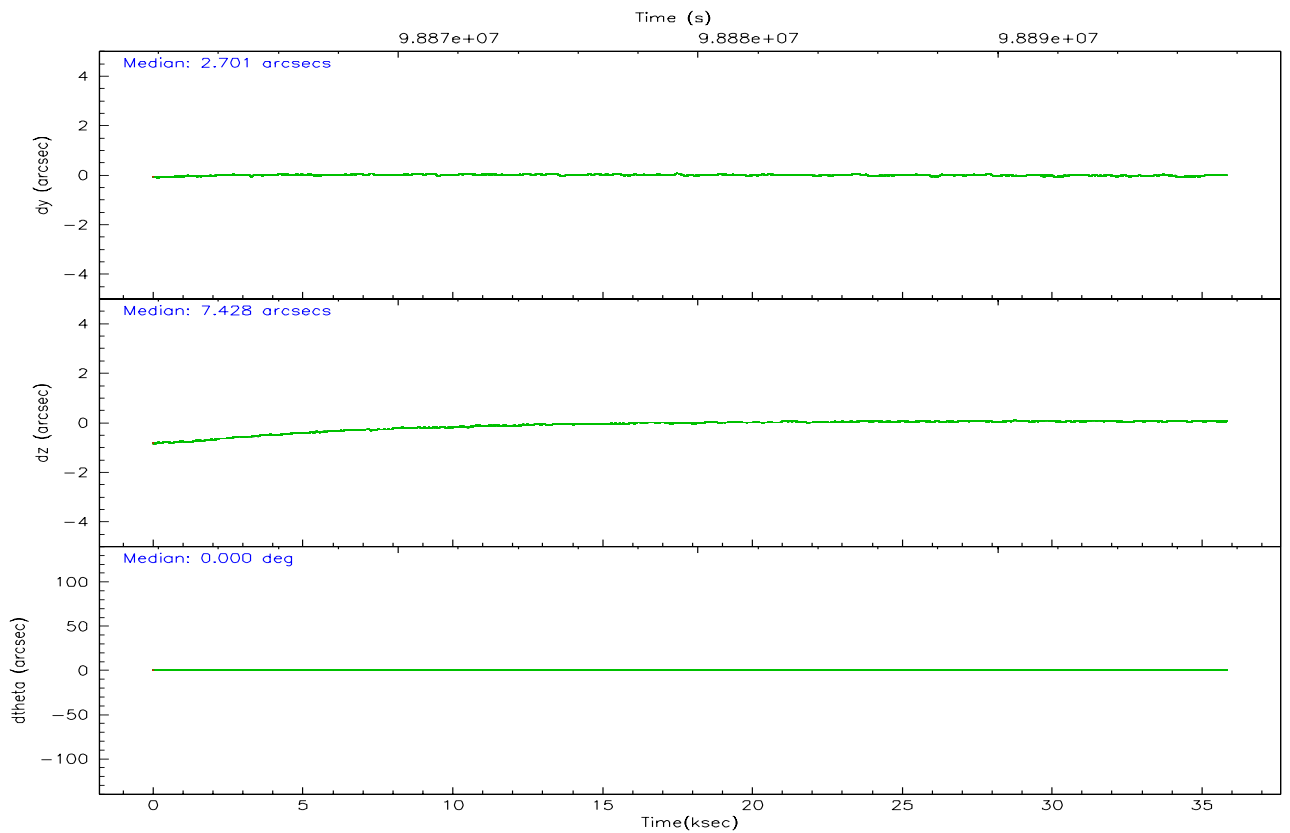
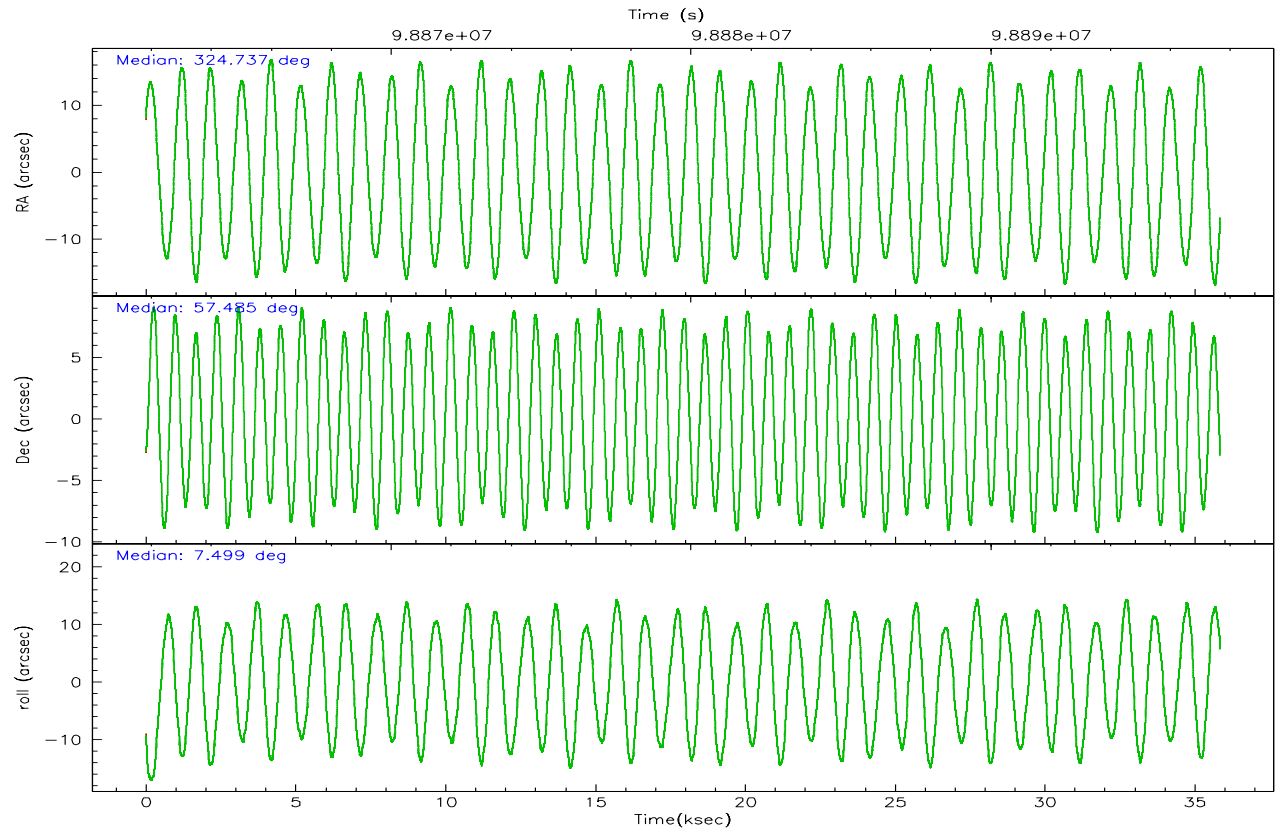
2.2 Compared Parameters

Parameter	Planned	Actual
Instrument	ACIS	ACIS
Detector	ACIS-456789	ACIS-456789
Grating	HETG	HETG
Data mode	FAINT	FAINT
Observation mode	POINTING	POINTING
Pointing RA	324.739583	324.7375242374068
Pointing Dec	57.486389	57.48450908178859
Pointing Roll	7.383472	7.506354984765641
SIM focus pos (mm)	-0.68282252473119	-0.68282252473119
SIM defocus (mm)	0.001444942264670734	0.001444942264670734
SIM translation stage pos (mm)	-190.1400660499	-190.1400660499
SIM translation stage offset (mm)	0.007542945932812017	0.007542945932812017
Phase constraints	Y	Y
Phase period	3.709800	3.709800
Phase epoch	51094.120000	51094.120000
Phase start	0.950000	0.950000
Phase end	0.050000	0.050000
Phase start error	0.050000	0.050000
Phase end error	0.050000	0.050000
Observation start time	98861811.548719	98861811.548719
Observation start date	2001-02-18T05:36:52	2001-02-18T05:36:51
Observation end time	98897660.925099	98897660.925099
Observation end date	2001-02-18T15:34:21	2001-02-18T15:34:20
Read mode	TIMED	TIMED

Parameter	Planned	Actual
Obspar format version number	6	6
Obspar file type	PREDICTED	ACTUAL
Obspar update status	OVERRIDE	OVERRIDE
On-chip summing requested	N	N
Subarray requested	NONE	NONE
Alternating exposures requested	N	N
Primary exposure time	0.000000	0.000000

2.3 Aspect



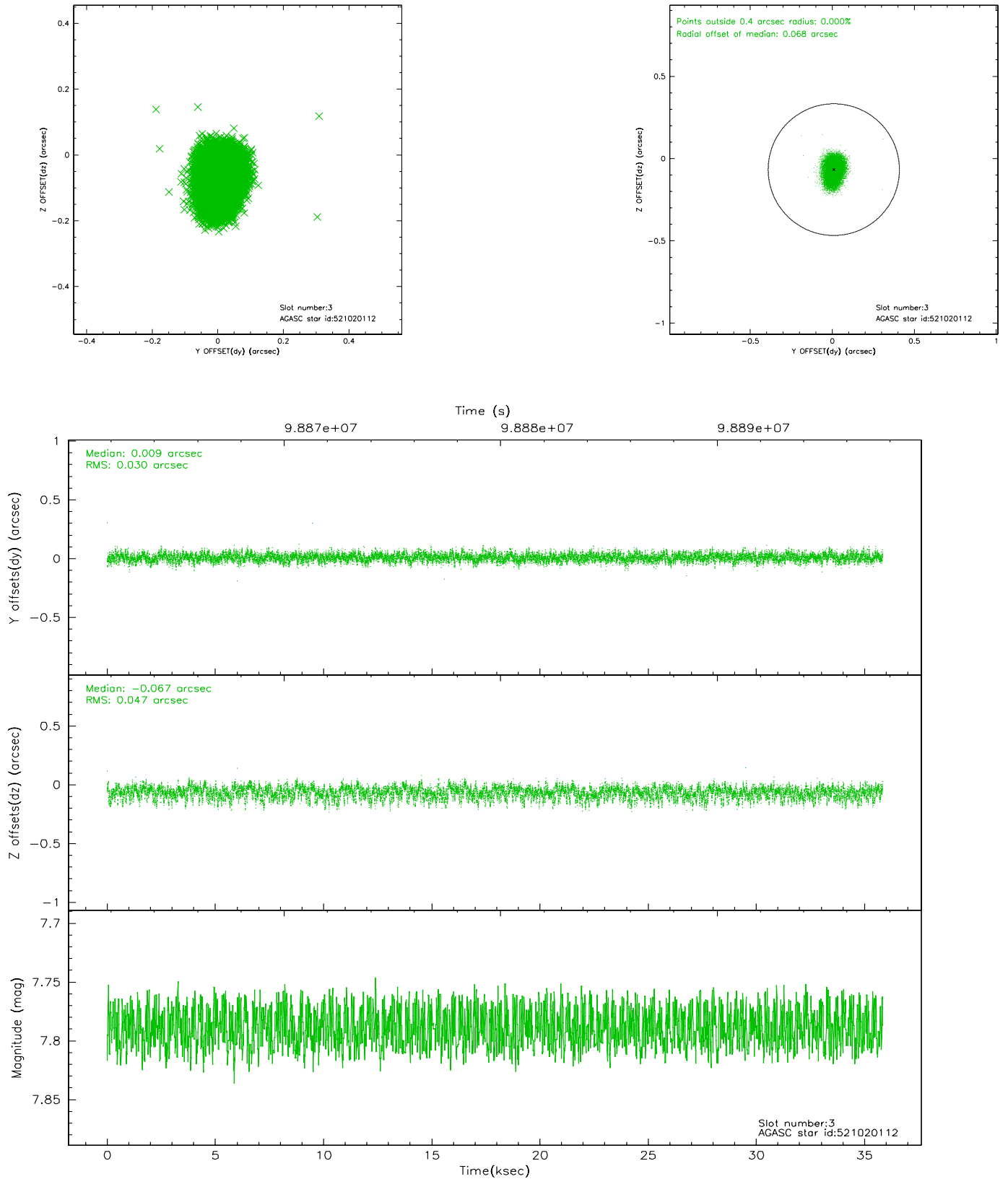


Slot Statistics

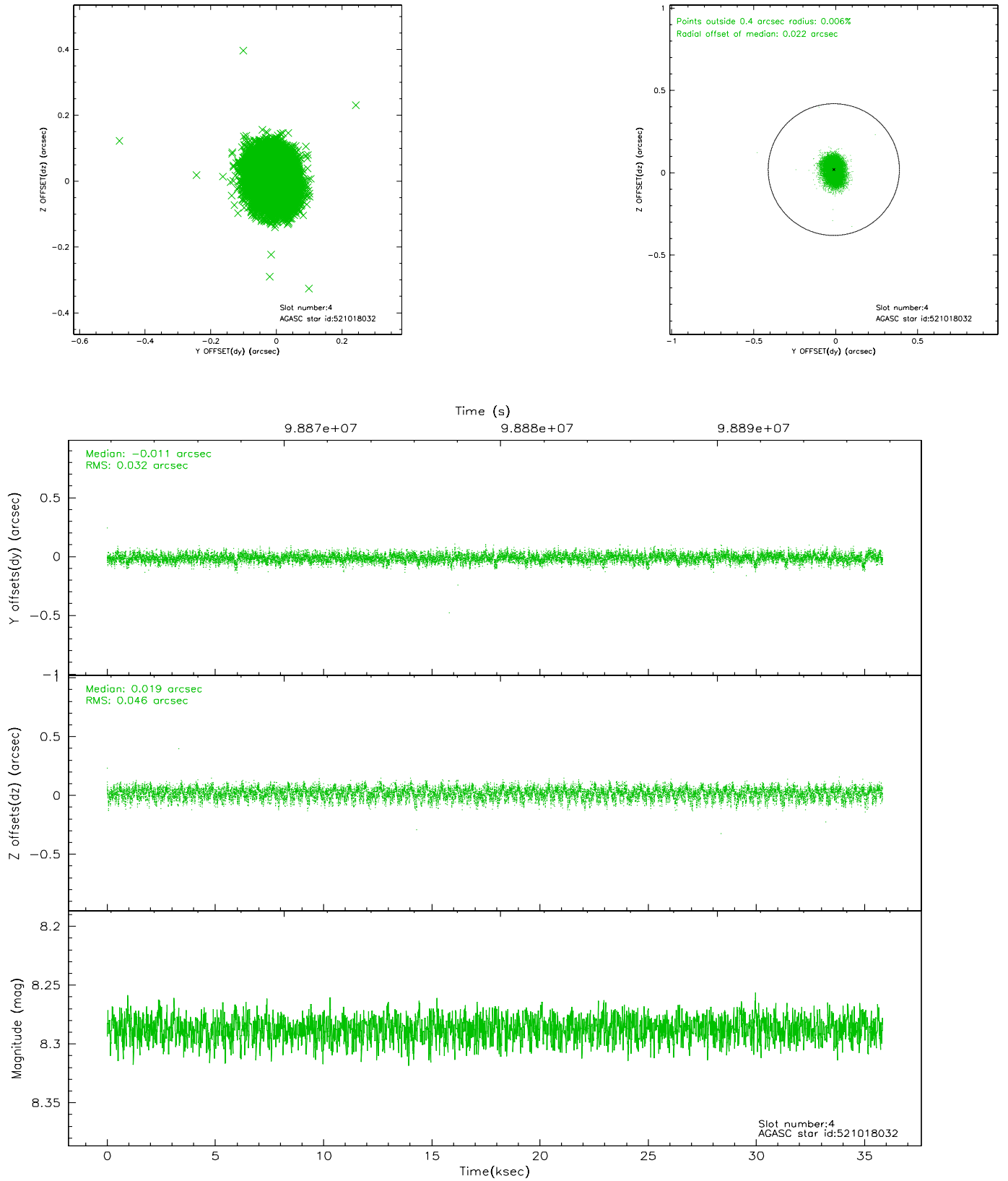
slot	status	id	mag	n_pts	med_dy	med_dz	dr1	dr2	ra	dec	mean_y	mean_z
0	UNUSED		0.00	0	0.000	0.000	0.000	0.000	0.000000	0.000000	0.00	0.00
1	FID	ACIS-S-5	7.23	8744	-0.010	0.005	0.000	0.000	0.000000	0.000000	-1808.38	173.78
2	UNUSED		0.00	0	0.000	0.000	0.000	0.000	0.000000	0.000000	0.00	0.00
3	GUIDE	521020112	7.79	17475	0.009	-0.067	0.059	0.098	324.609515	56.973735	-398.68	-1741.36
4	GUIDE	521018032	8.29	17479	-0.011	0.019	0.059	0.097	324.637664	57.165729	-254.62	-1063.15
5	GUIDE	521023608	8.78	17472	-0.001	0.003	0.058	0.094	325.041395	57.195436	540.36	-1056.52
6	GUIDE	521014200	9.13	17473	-0.028	0.023	0.106	0.159	325.156422	58.109888	1163.59	2183.63
7	GUIDE	521012392	9.11	17481	0.037	0.024	0.108	0.179	323.590514	58.057896	-1815.15	2395.04

2.4 Star Slots

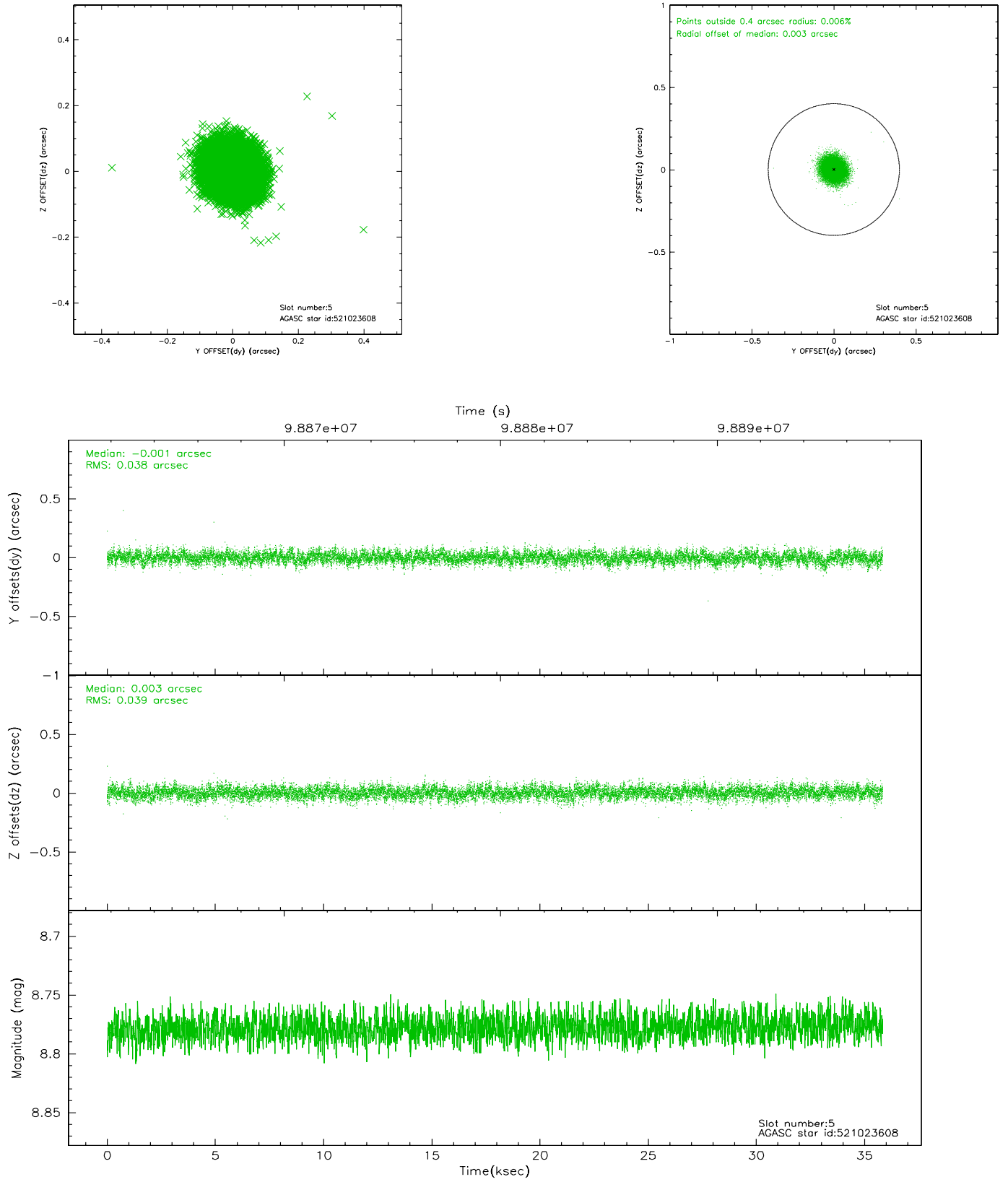
2.4.1 Slot 3



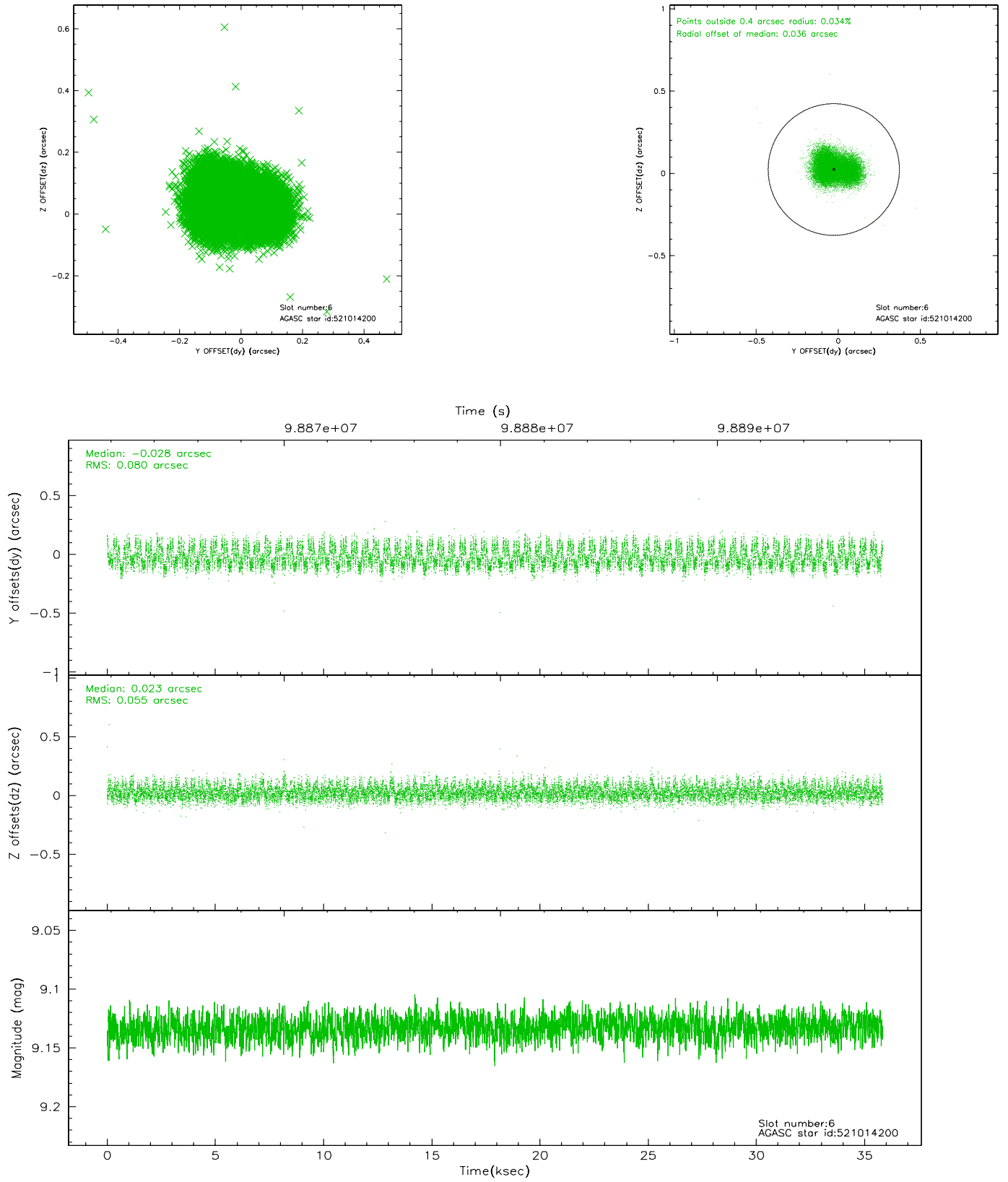
2.4.2 Slot 4



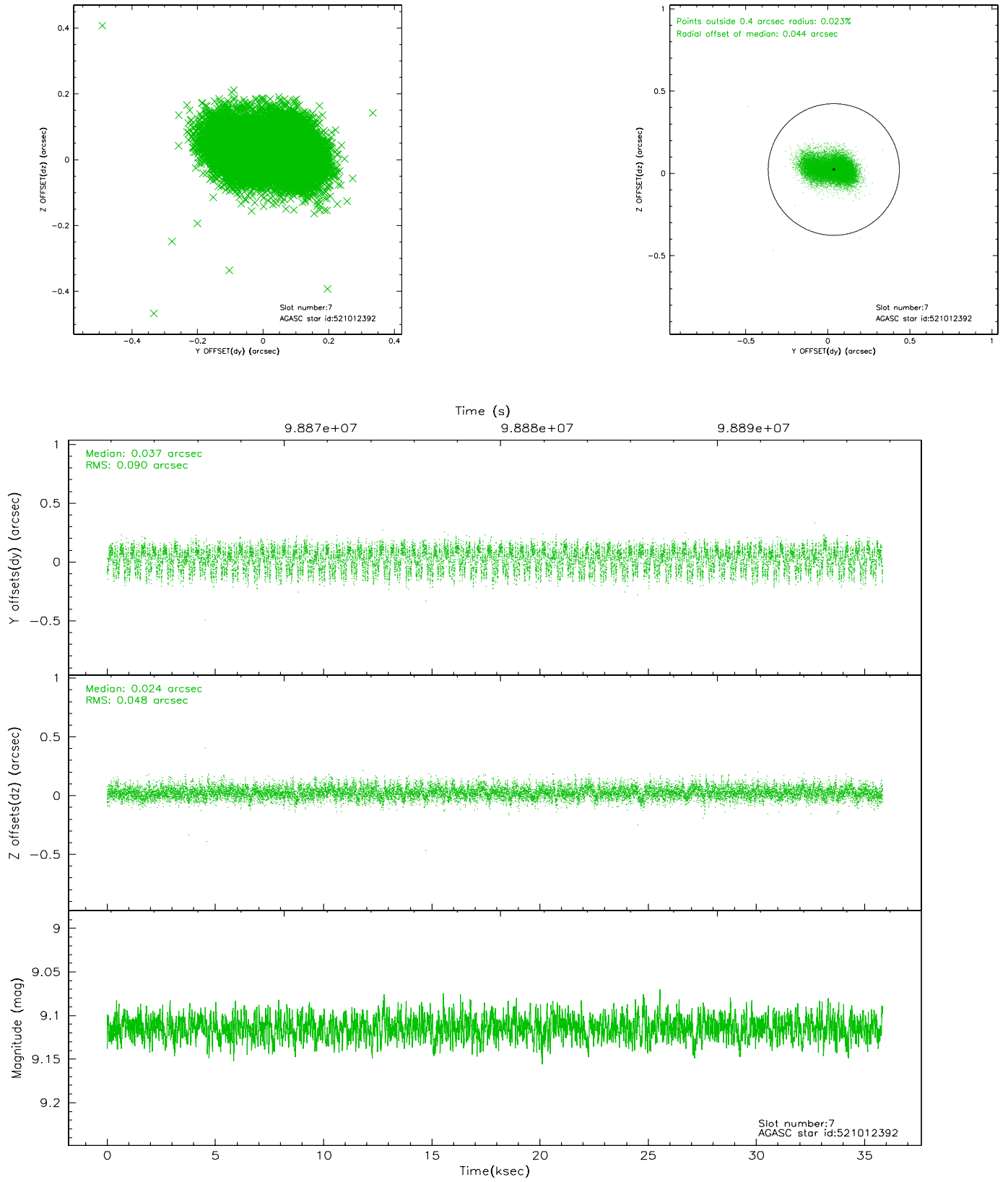
2.4.3 Slot 5



2.4.4 Slot 6

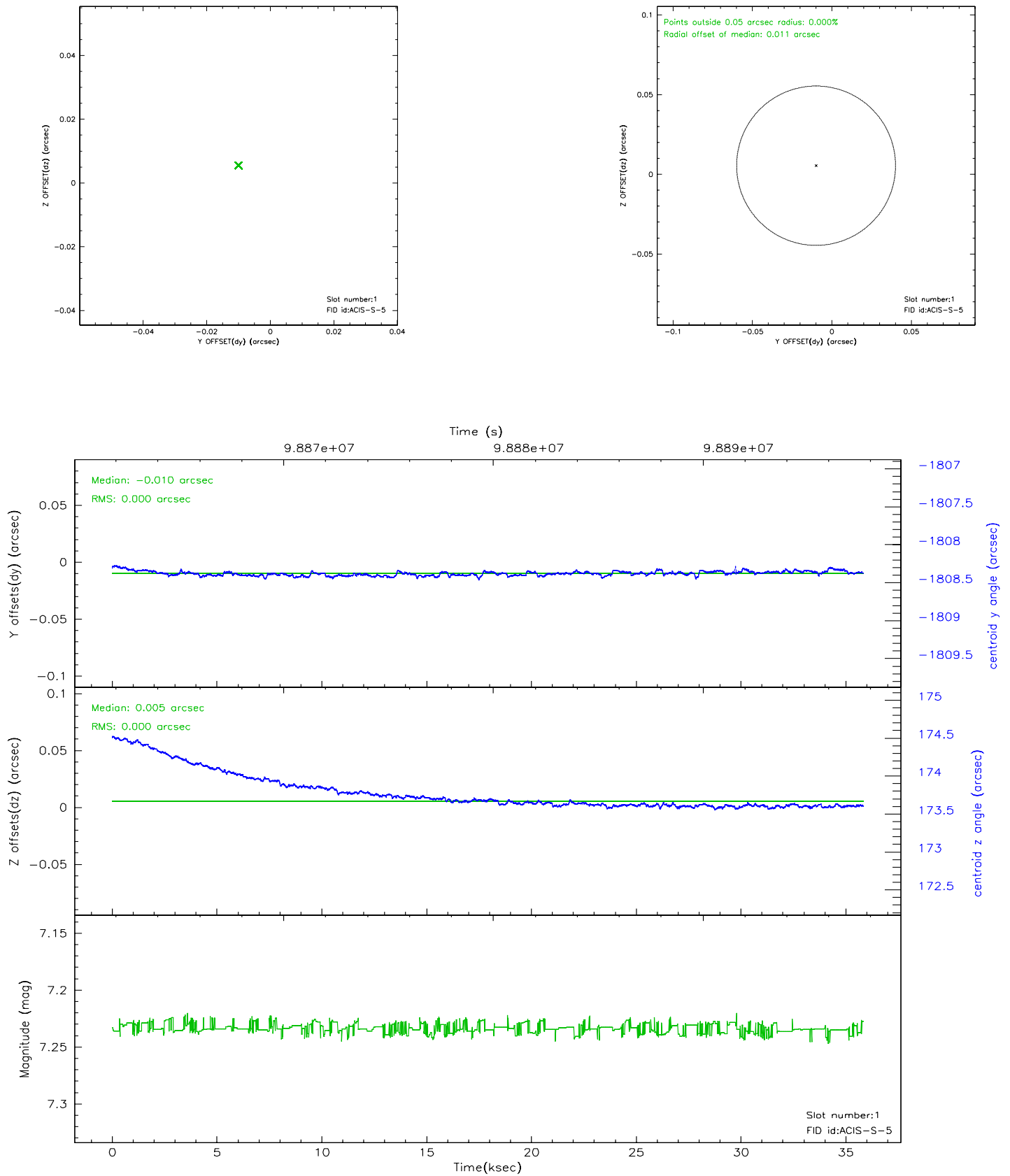


2.4.5 Slot 7



2.5 FID Slots

2.5.1 Slot 1

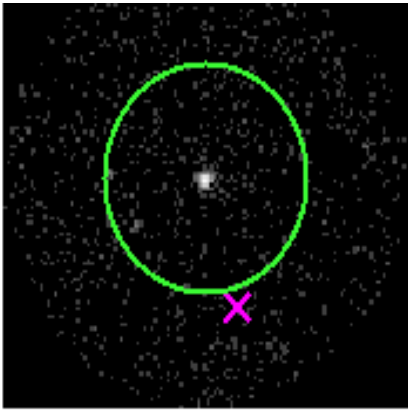


3 Gratings

3.1 HEG Arm



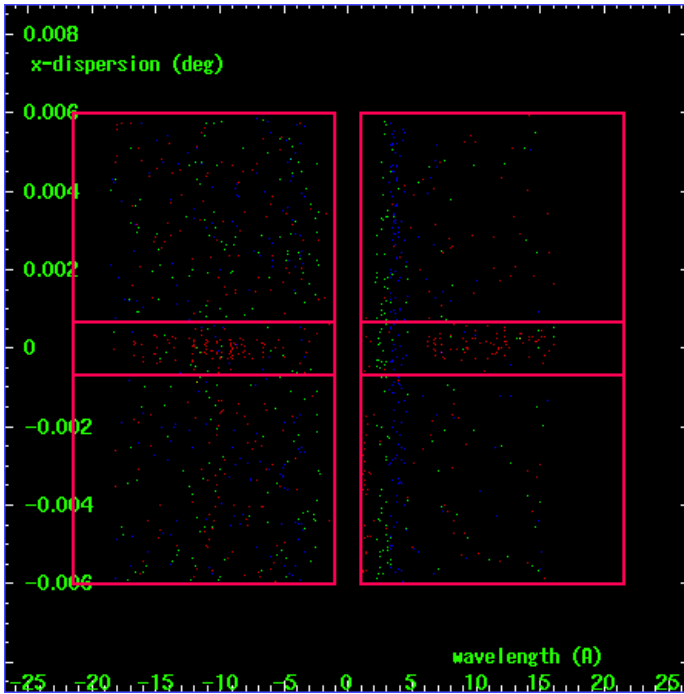
HEG Order Sort 123



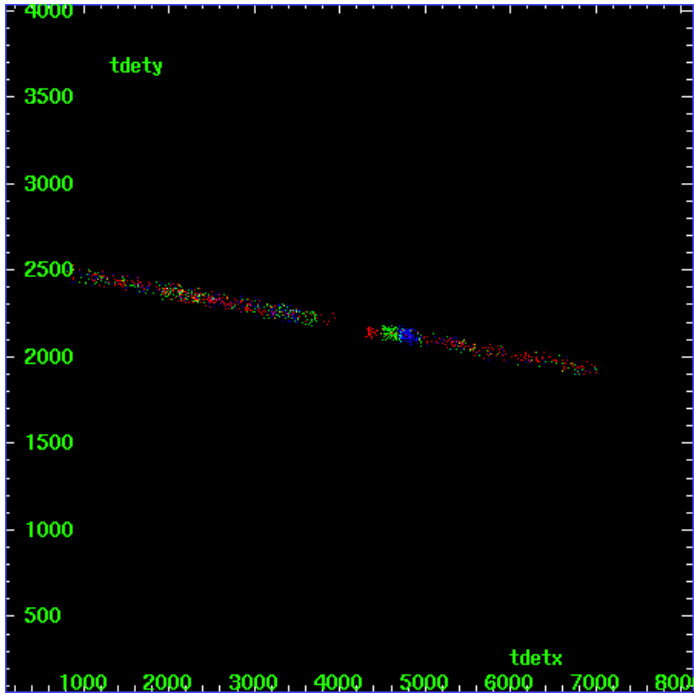
HEG Zero Order



HEG Order Sort ALL

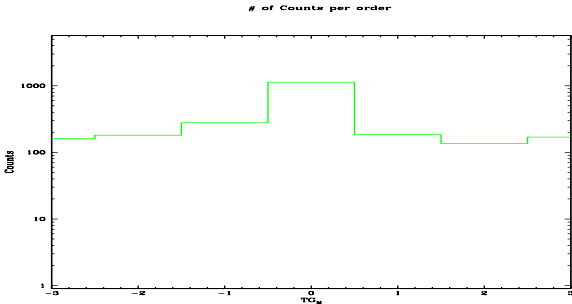


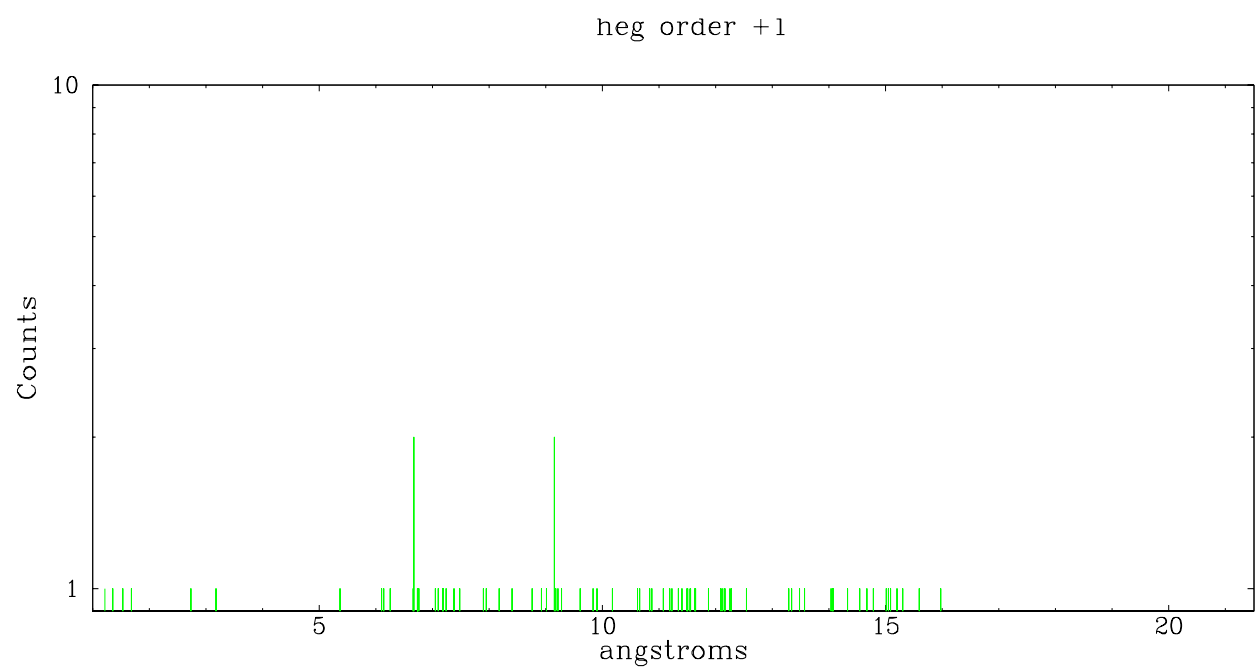
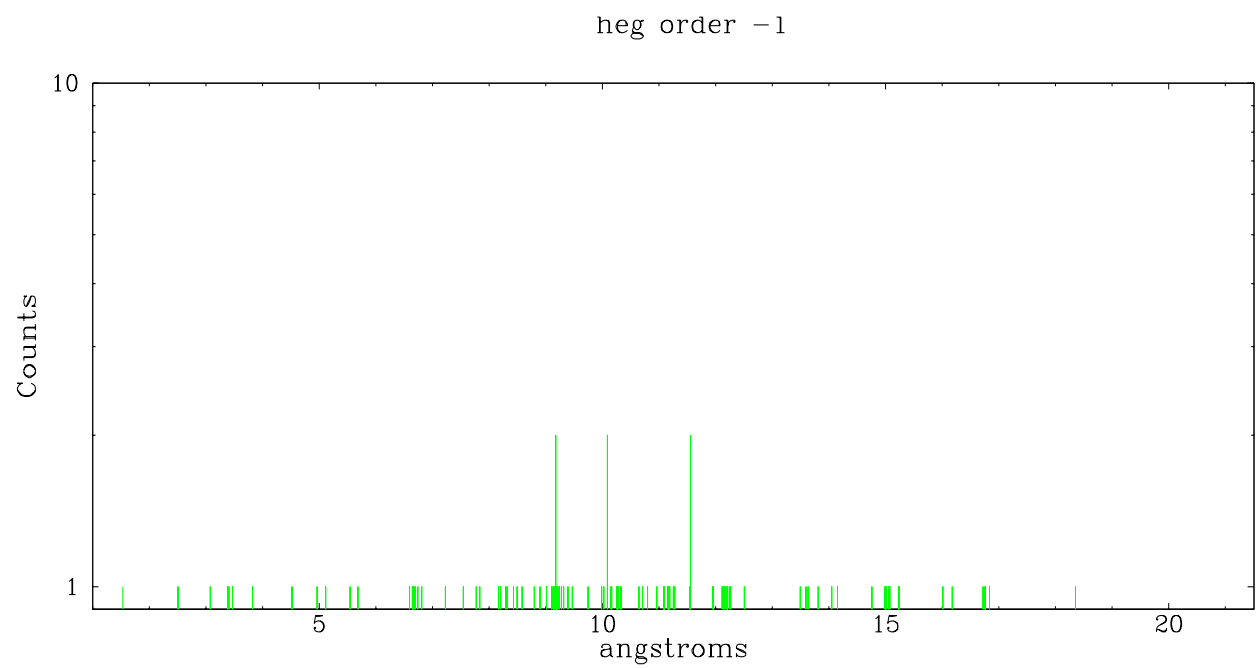
Spot Image HEG



Full Detector HEG

	order -3	order -2	order -1	order 0	order 1	order 2	order 3
Events	162	181	278	1131	184	136	169

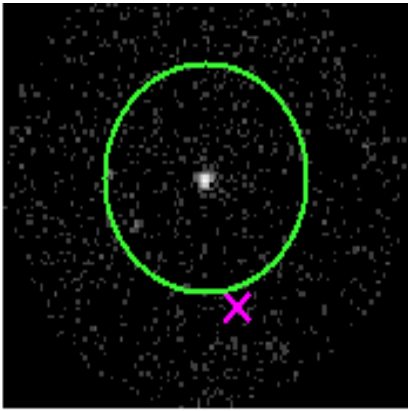




3.2 MEG Arm



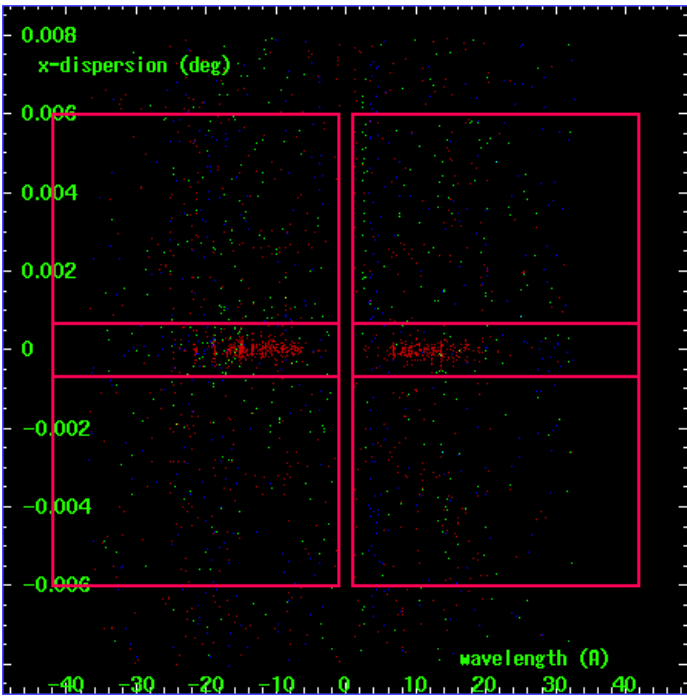
MEG Order Sort 123



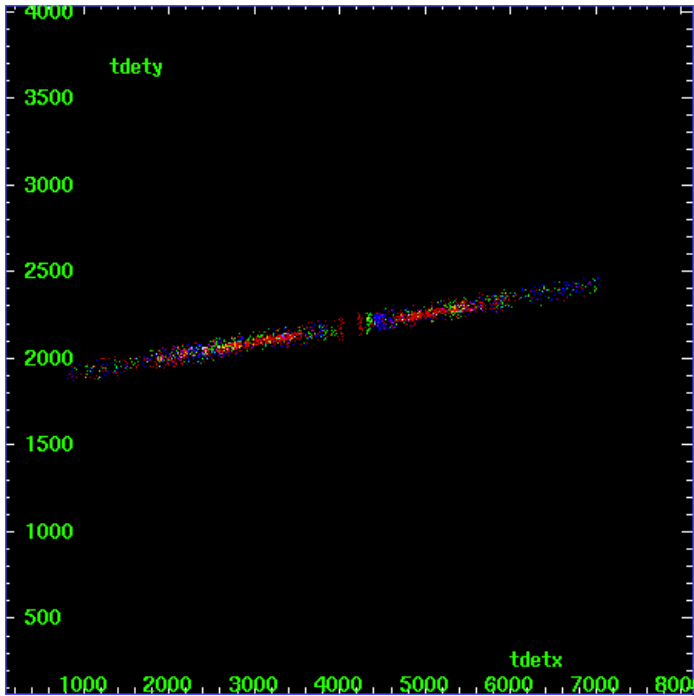
MEG Zero Order



MEG Order Sort ALL

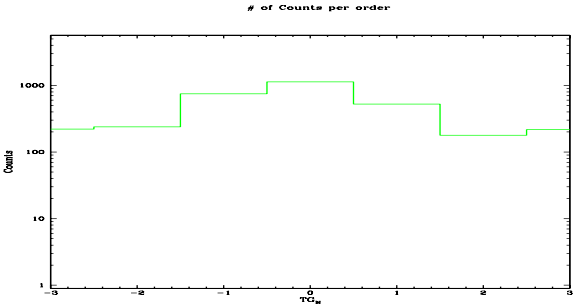


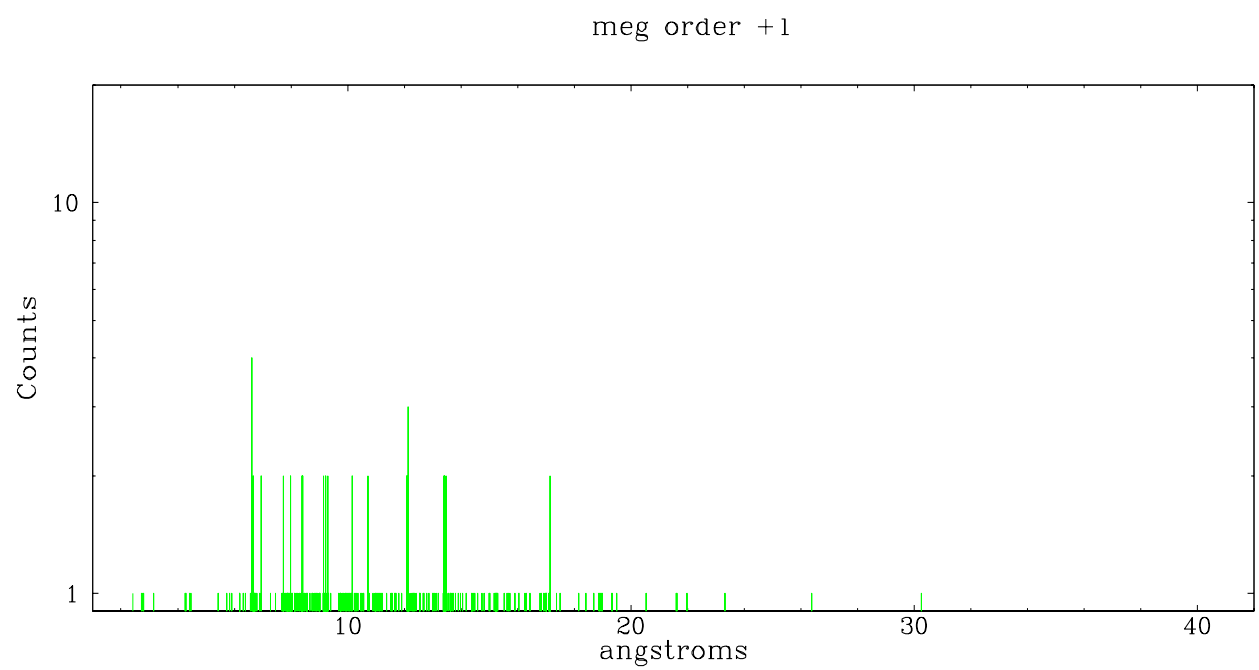
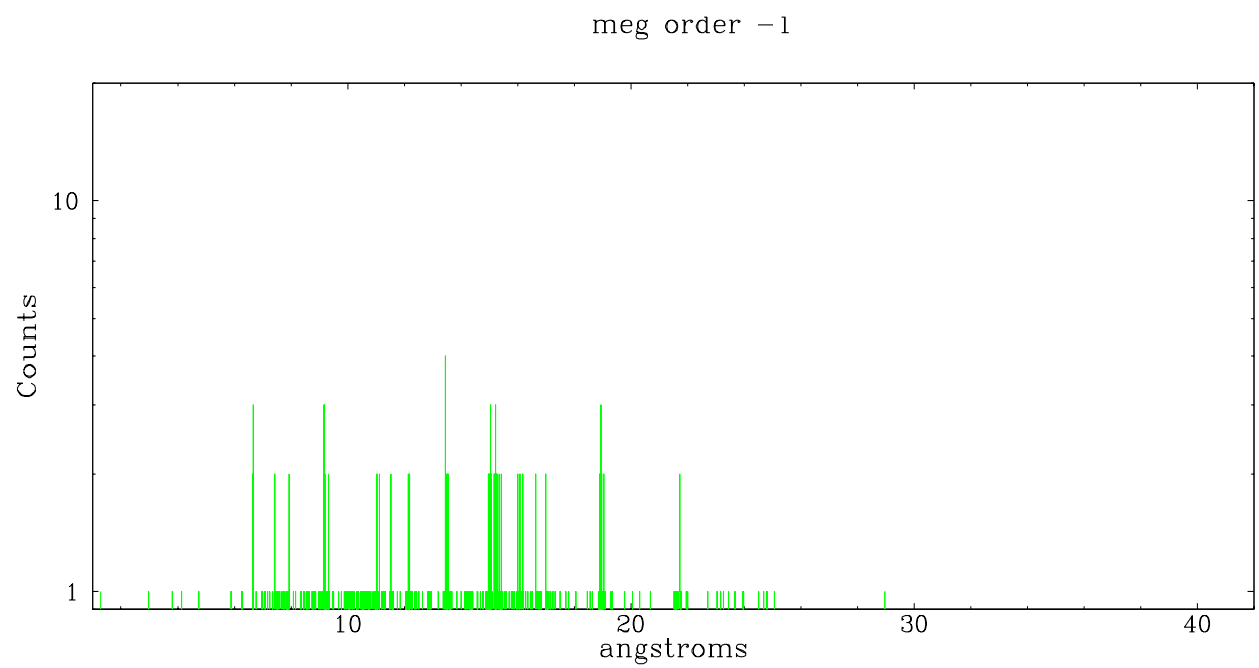
Spot Image MEG



Full Detector MEG

	order -3	order -2	order -1	order 0	order 1	order 2	order 3
Events	221	238	749	1131	525	178	216





A Summary

A.1 Status

V&V Scientist	David Huenemoerder
V&V Date (YYYY-MM-DD)	2006.11.20
V&V Edition	1
V&V Disposition and Status	OK
V&V Charge Time	34.564

A.2 Comments

only one FID light available.