

V&V Reference Report

L2 ASCDS Version : 8.4.5

Observation 1838 - L2 Version 3
Chandra X-Ray Center

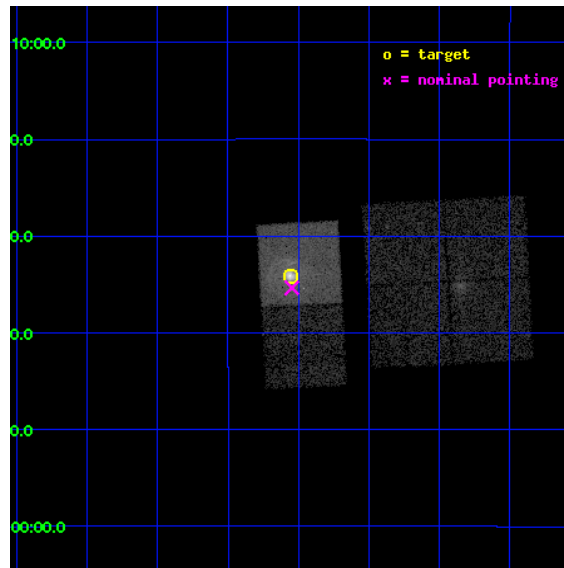
L2 Processing Date : Sep 1 2012

Contents

1	Front	2
2	OBI	3
2.1	OBI	3
2.1.1	Images	3
2.1.2	Bias	3
2.1.3	Parameters	4
2.1.4	Events	4
2.2	Compared Parameters	5
2.3	Aspect	6
2.4	Star Slots	9
2.4.1	Slot 3	9
2.4.2	Slot 4	10
2.4.3	Slot 5	11
2.4.4	Slot 6	12
2.4.5	Slot 7	13
2.5	FID Slots	14
2.5.1	Slot 0	14
2.5.2	Slot 1	15
2.5.3	Slot 2	16
A	Summary	17
A.1	Status	17
A.2	Comments	17

1 Front

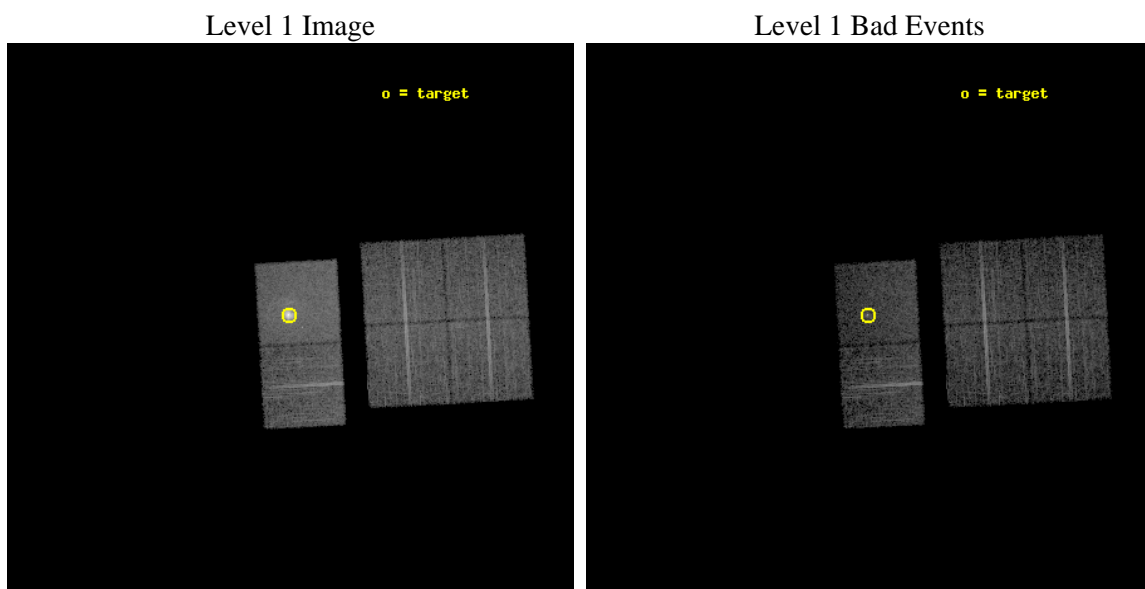
seq_num	590218	Sequence number
obs_id	1838	Observation id
title	HRC RESPONSE TO CONTINUUM SOURCE.	Proposal title
observer	Dr. CXC Calibration	Principal investigator
object	G21.5-0.9 [Chip S3, T=120, Offsets=-1,0,1]	Source name
dtcycle	0	
cycle	P	events from which exps? Prim/Second/Both
ra_targ	278.389583	Observer's specified target RA [deg]
dec_targ	-10.568528	Observer's specified target Dec [deg]
ra_nom	278.38657206626	Nominal RA [deg]
dec_nom	-10.589269915683	Nominal Dec [deg]
roll_nom	266.80752046013	Nominal Roll [deg]
revision	3	Processing version of data
ontime	7952.000007391	Sum of GTIs [s]
livetime	7851.3069951778	Livetime [s]
ontime0	7952.000007391	Sum of GTIs [s]
ontime1	7948.7590172291	Sum of GTIs [s]
ontime2	7952.000007391	Sum of GTIs [s]
ontime3	7952.000007391	Sum of GTIs [s]
ontime6	7952.000007391	Sum of GTIs [s]
ontime7	7952.000007391	Sum of GTIs [s]
l2events	78440	Number of level 2 events



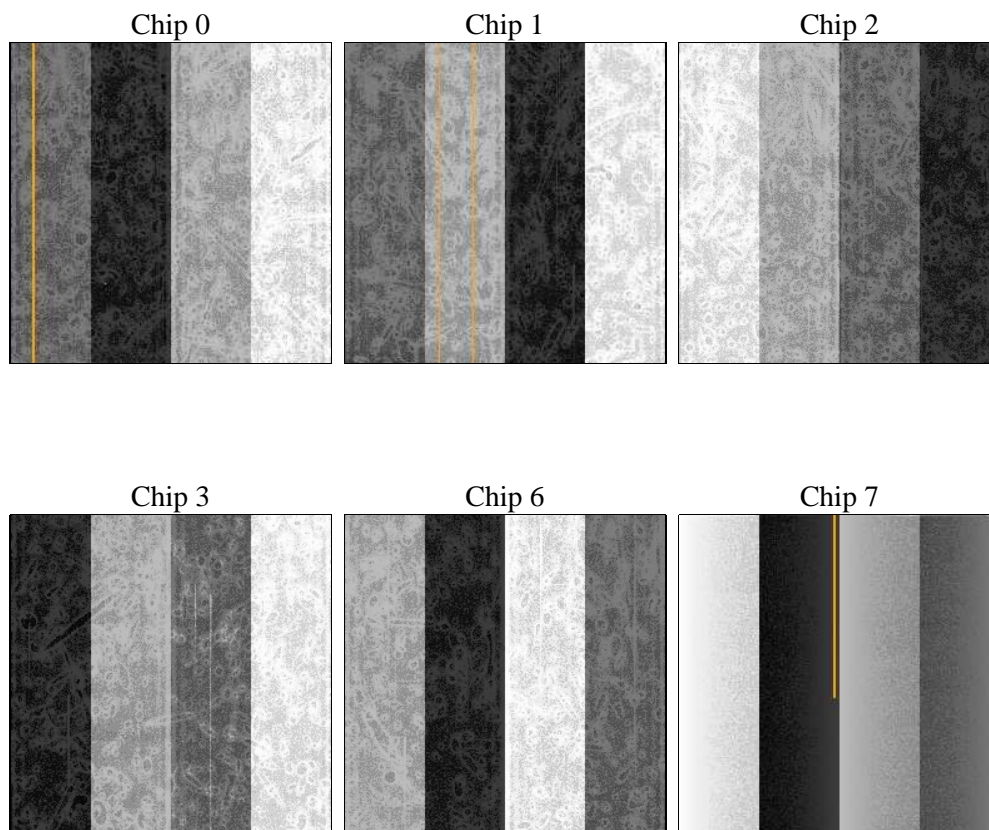
2 OBI

2.1 OBI

2.1.1 Images



2.1.2 Bias



2.1.3 Parameters

obi_num	0	Obi number	sched_exp_time	8000.000000	[s] Scheduled observation exposure time
ascdsver	8.4.5	Processing system revision	ontime	7952.000007391	Sum of GTIs [s]
caldsver	4.5.1.1	 	ontime0	7952.000007391	Sum of GTIs [s]
date	2012-09-01T03:52:09	Date and time of file creation	ontime1	7948.7590172291	Sum of GTIs [s]
revision	3	Processing version of data	ontime2	7952.000007391	Sum of GTIs [s]
			ontime3	7952.000007391	Sum of GTIs [s]
			ontime6	7952.000007391	Sum of GTIs [s]
			ontime7	7952.000007391	Sum of GTIs [s]
			l1events	318813	Number of level 1 events

2.1.4 Events

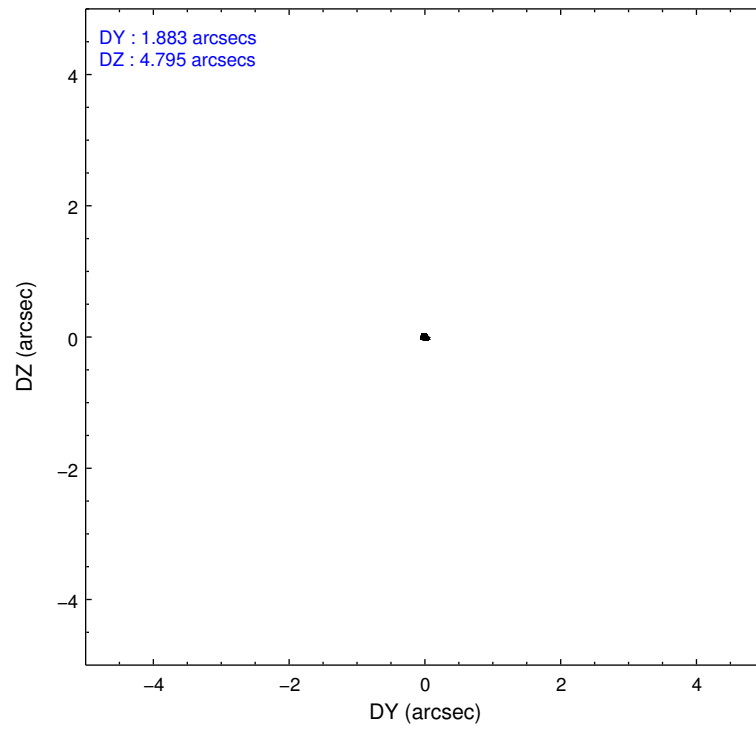
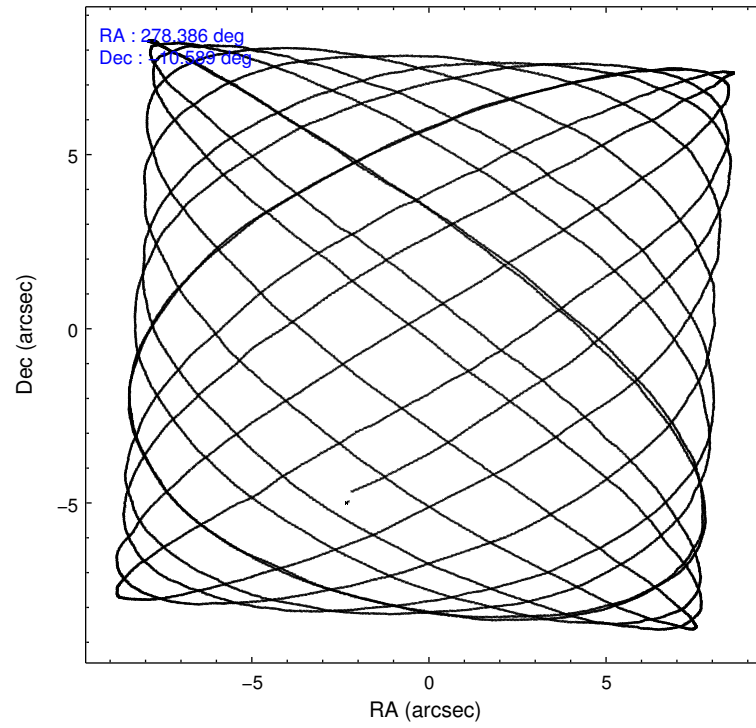
	ccd 0	ccd 1	ccd 2	ccd 3	ccd 6	ccd 7		ccd 0	ccd 1	ccd 2	ccd 3	ccd 6	ccd 7
level 1 events	46331	42289	46807	45879	48861	88646	grade 0 events	2910	2553	2293	2512	2589	8880
rejected events	40109	36311	41551	40363	43049	34366		6%	6%	4%	5%	5%	10%
rejected %	86%	85%	88%	87%	88%	38%	grade 1 events	40	24	20	25	25	135
								0%	0%	0%	0%	0%	0%
							grade 2 events	1230	1159	1070	1064	1081	12431
								2%	2%	2%	2%	2%	14%
							grade 3 events	578	649	465	517	538	5677
								1%	1%	0%	1%	1%	6%
							grade 4 events	524	588	492	524	552	5615
								1%	1%	1%	1%	1%	6%
							grade 5 events	1666	1707	1562	1685	1932	5831
								3%	4%	3%	3%	3%	6%
							grade 6 events	990	1032	940	904	1057	21719
								2%	2%	2%	1%	2%	24%
							grade 7 events	38393	34577	39965	38648	41087	28358
								82%	81%	85%	84%	84%	31%

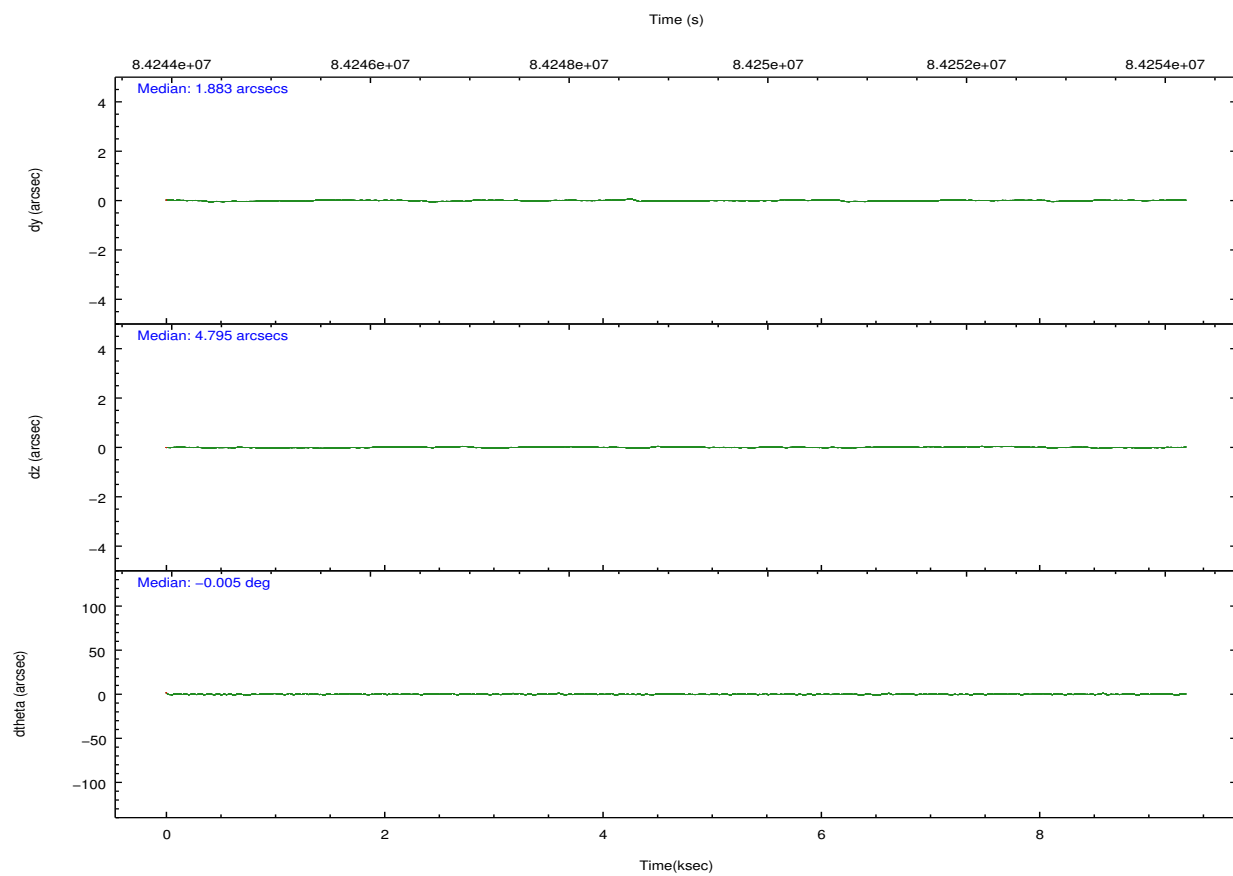
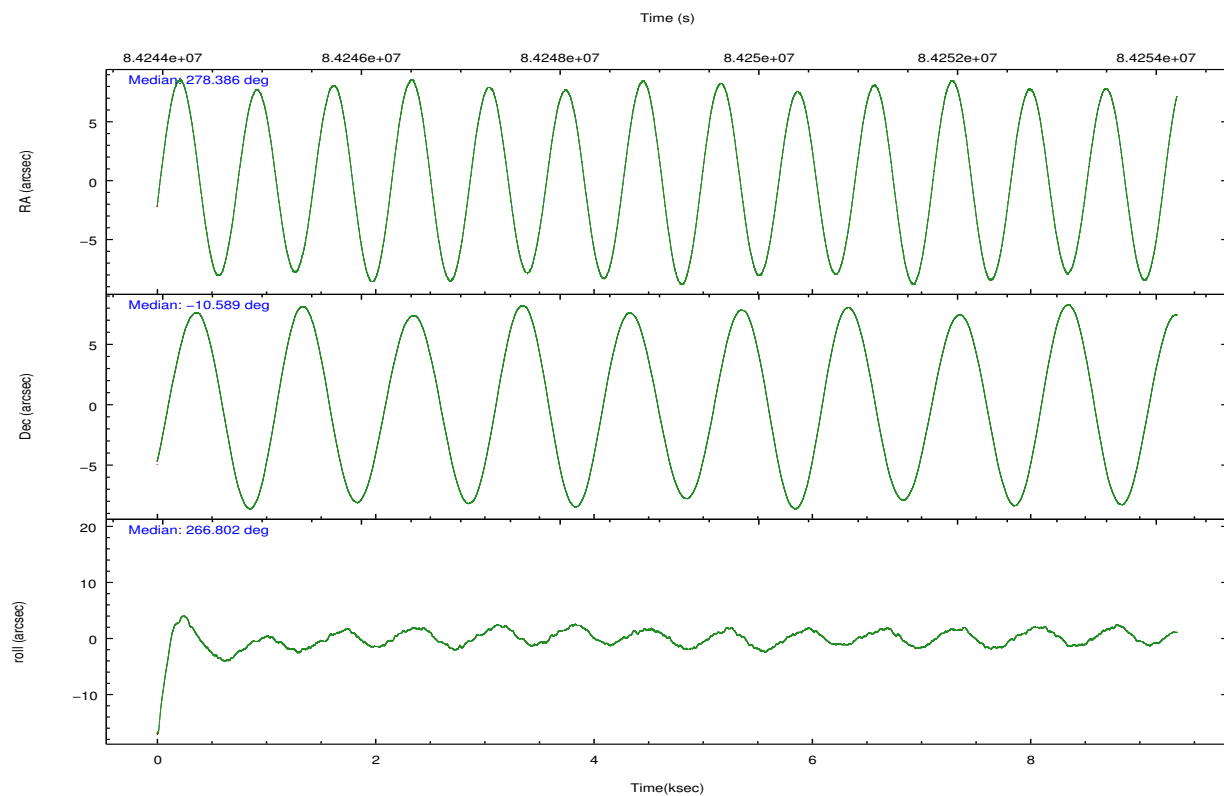
2.2 Compared Parameters

Parameter	Planned	Actual
Instrument	ACIS	ACIS
Detector	ACIS-012367	ACIS-012367
Grating	NONE	NONE
Data mode	FAINT	FAINT
Observation mode	POINTING	POINTING
[deg] Pointing RA	278.373832	278.3865720662604
[deg] Pointing Dec	-10.564956	-10.58926991568253
[deg] Pointing Roll	266.648562	266.8075204601342
[mm] SIM focus pos	-0.684267	-0.6828225247311905
[mm] SIM defocus	0	0.001444936568705701
[mm] SIM translation stage pos	-187.205523	-187.2058600929514
[mm] SIM translation stage offset	-2.927	-2.926662490056458
[s] Observation start time (MET)	84245748.184000	84244214.754998
Observation start date	2000-09-02T01:34:44	2000-09-02T01:10:14
[s] Observation end time (MET)	84253748.184000	84253882.042861
Observation end date	2000-09-02T03:48:04	2000-09-02T03:51:22
Read mode	TIMED	TIMED

Parameter	Planned	Actual
Obspar format version number	7	7
Obspar file type	PREDICTED	ACTUAL
Obspar update status	NONE	UPDATED
Number of optional ACIS chips dropped	0	0
On-chip summing requested	N	N
Subarray requested	NONE	NONE
Alternating exposures requested	N	N
[s] Primary exposure time	0.000000	3.2

2.3 Aspect



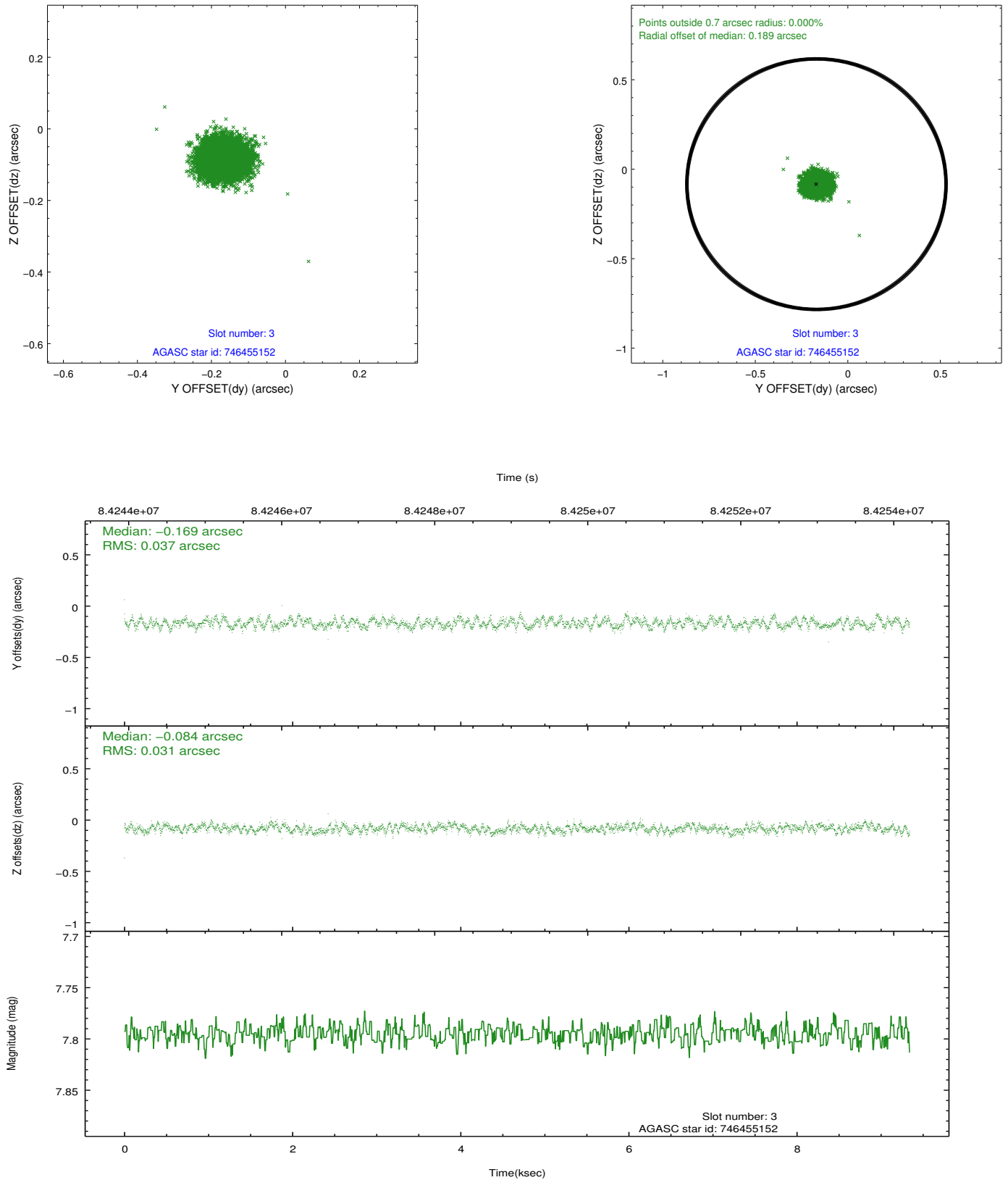


Slot Statistics

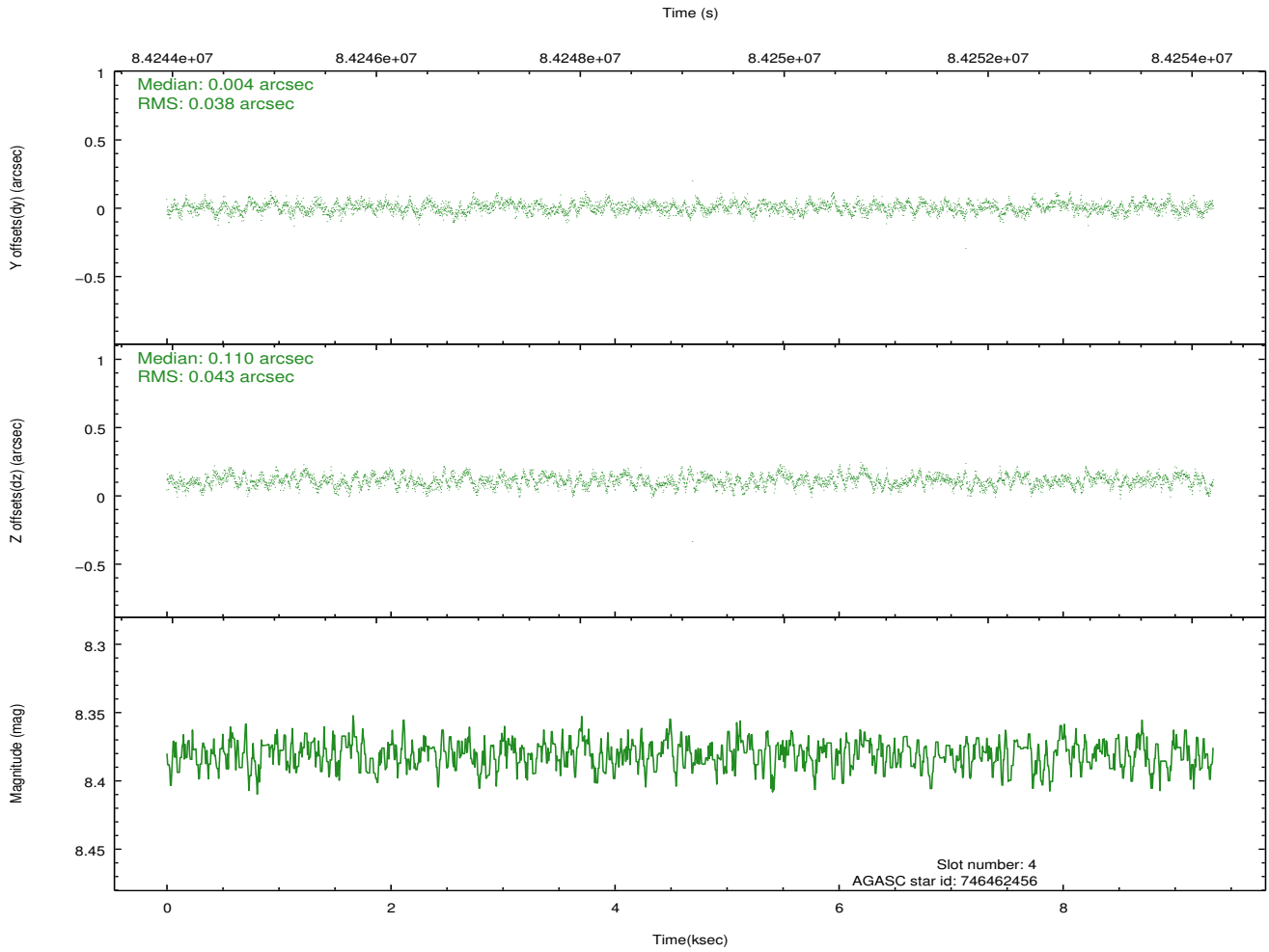
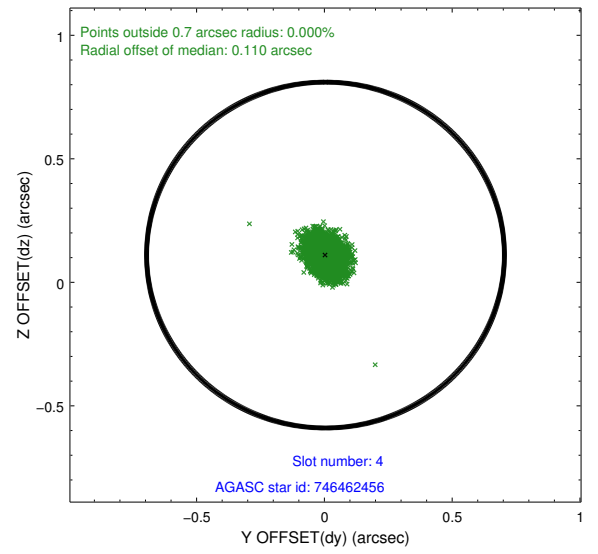
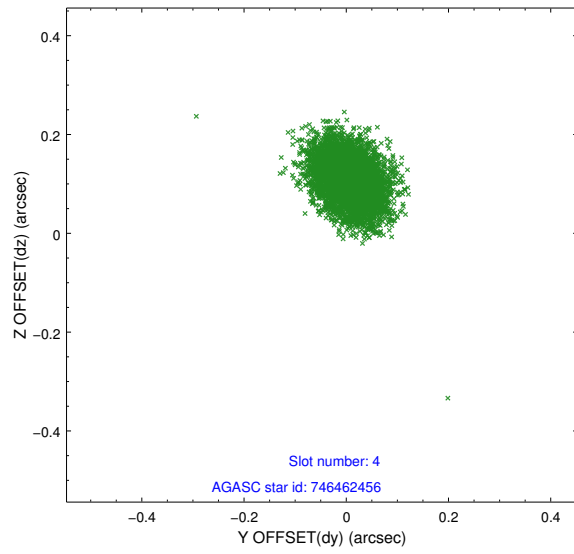
slot	status	id	mag	n_pts	med_dy	med_dz	dr1	dr2	ra	dec	mean_y	mean_z
0	FID	ACIS-S-2	7.11	2279	-0.066	-0.031	0.006	0.011	0.000000	0.000000	-754.33	-1786.37
1	FID	ACIS-S-4	7.20	2279	0.018	0.040	0.005	0.010	0.000000	0.000000	2158.74	121.59
2	FID	ACIS-S-5	7.23	2279	0.018	-0.000	0.007	0.011	0.000000	0.000000	-1806.37	115.83
3	GUIDE	746455152	7.80	4556	-0.169	-0.084	0.053	0.080	278.447893	-9.976732	-2128.62	138.60
4	GUIDE	746462456	8.38	4557	0.004	0.110	0.061	0.097	278.652171	-10.530173	-181.76	976.85
5	GUIDE	746455112	8.92	4555	0.208	-0.210	0.084	0.158	278.266531	-10.703234	520.25	-349.17
6	GUIDE	746460272	8.93	4558	-0.063	0.117	0.072	0.112	278.847488	-10.152127	-1579.78	1589.26
7	GUIDE	746461728	9.79	4554	0.023	0.062	0.104	0.167	278.986921	-10.530755	-247.32	2160.08

2.4 Star Slots

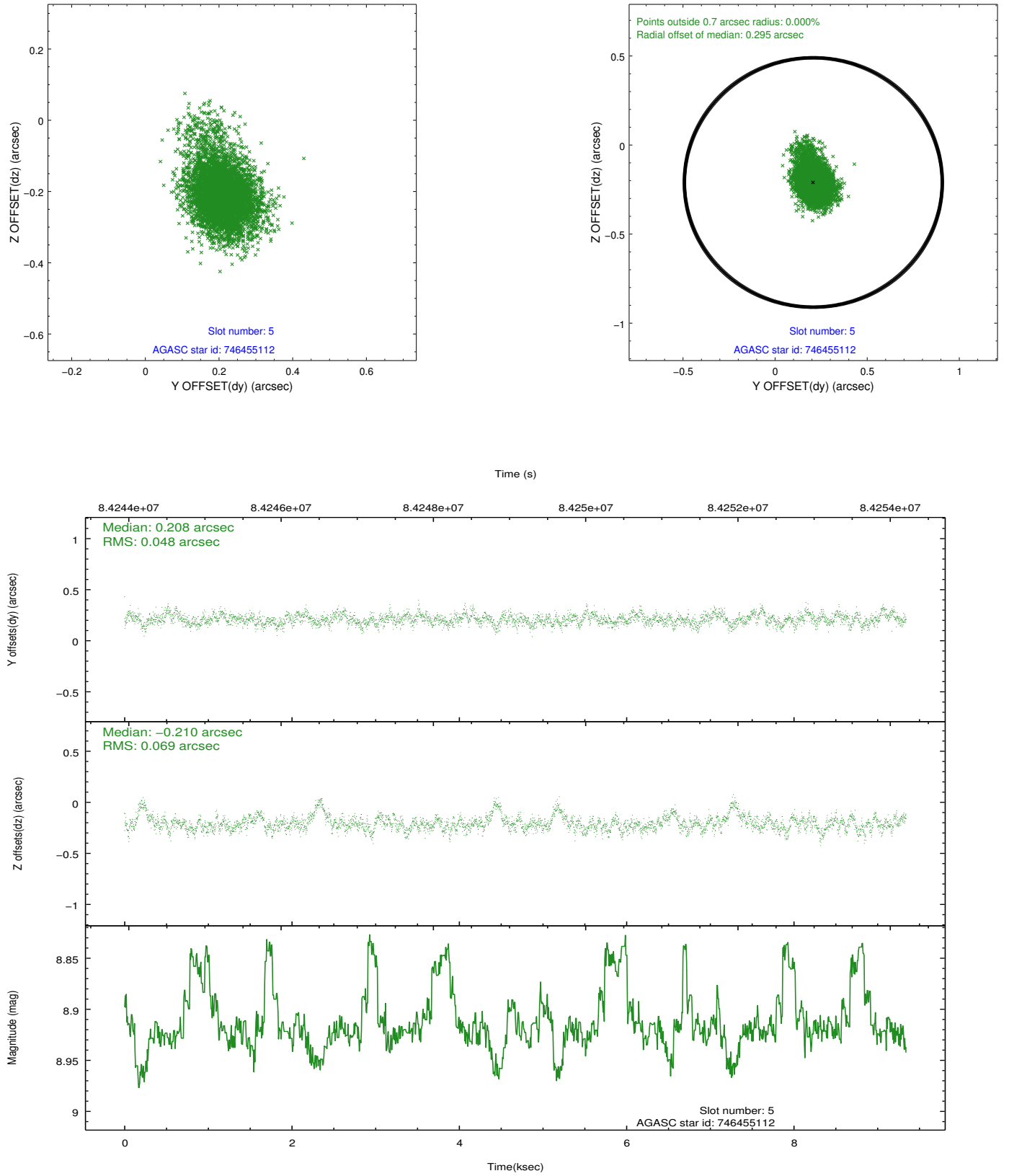
2.4.1 Slot 3



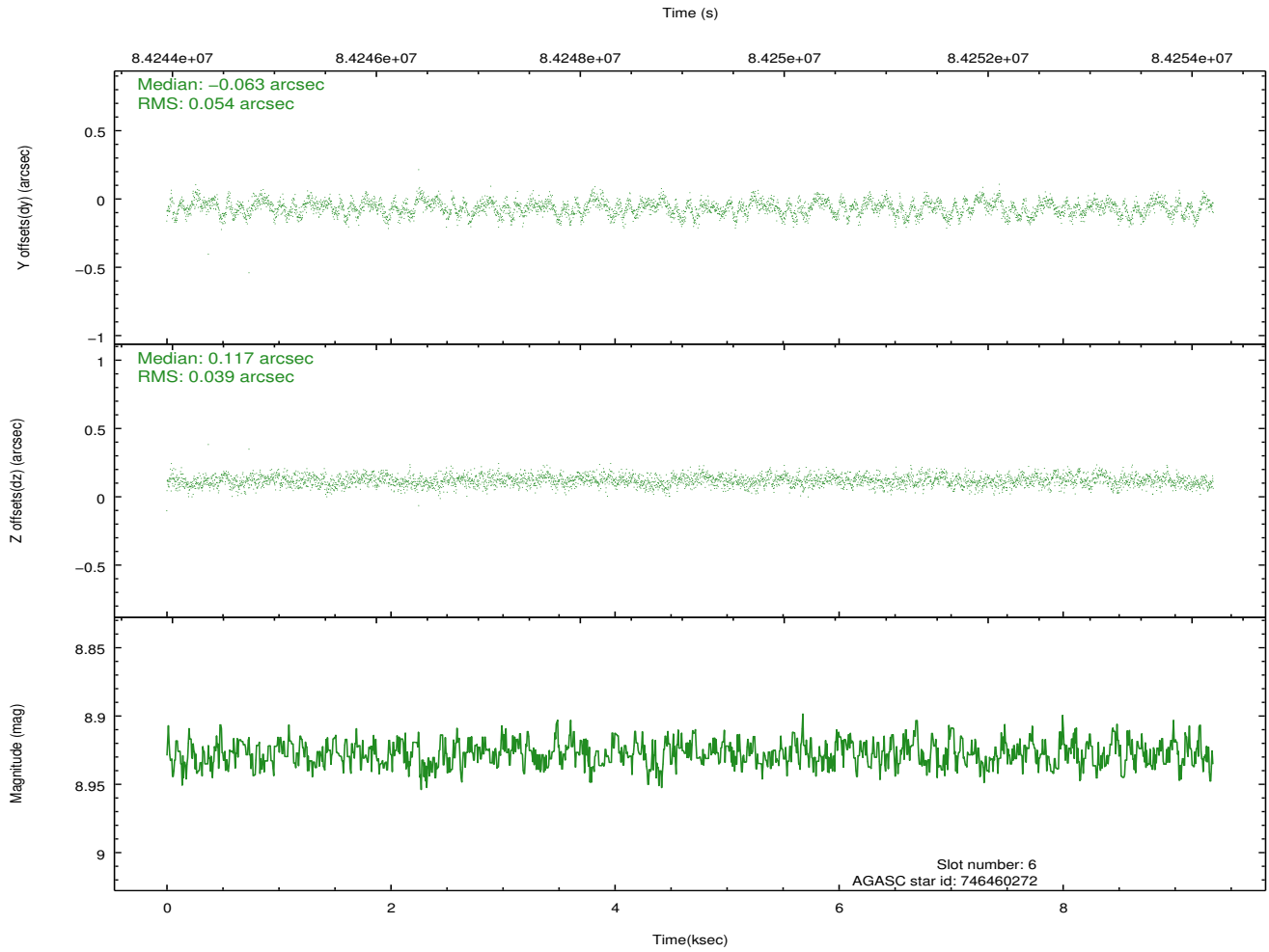
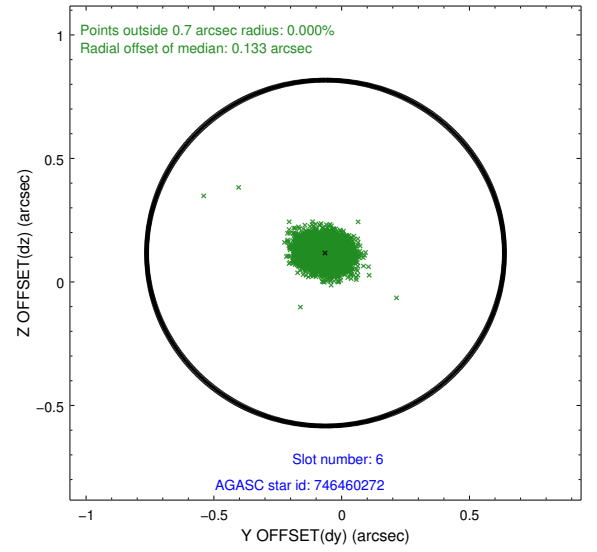
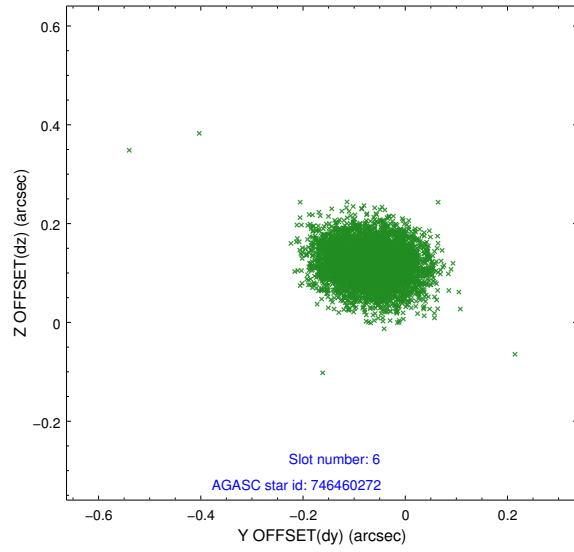
2.4.2 Slot 4



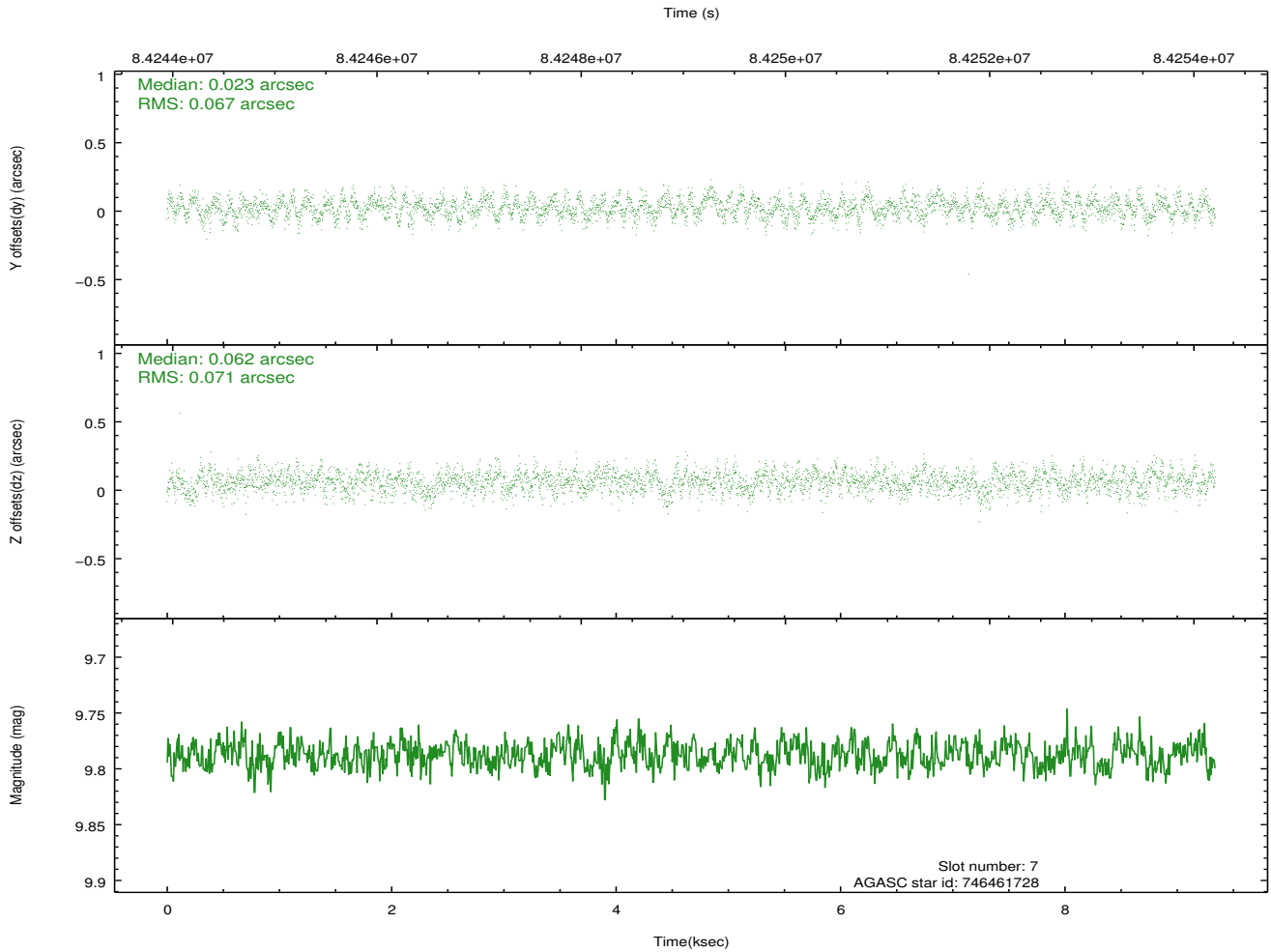
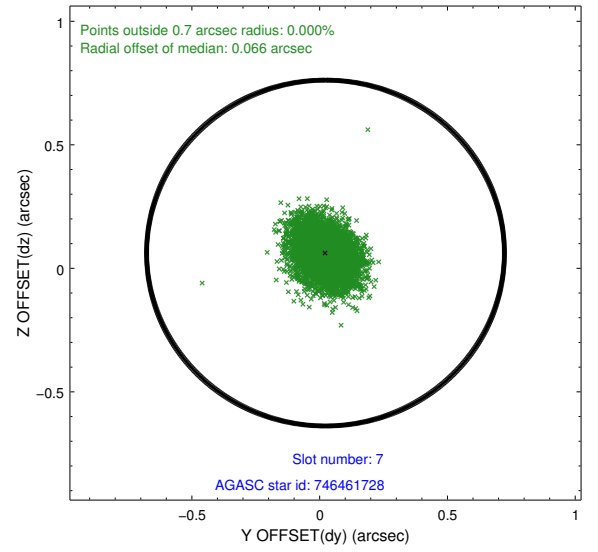
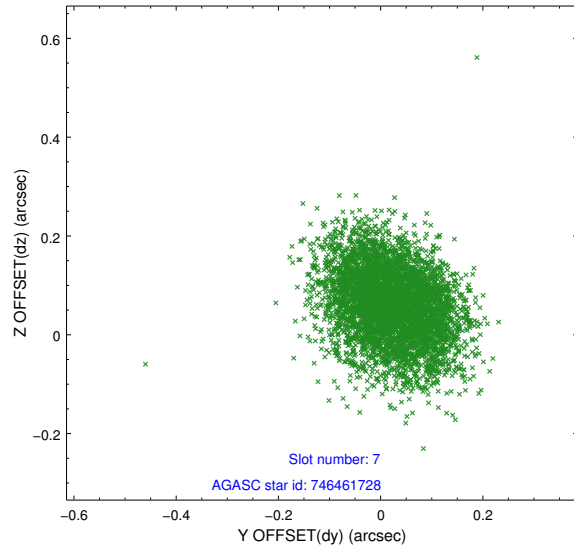
2.4.3 Slot 5



2.4.4 Slot 6

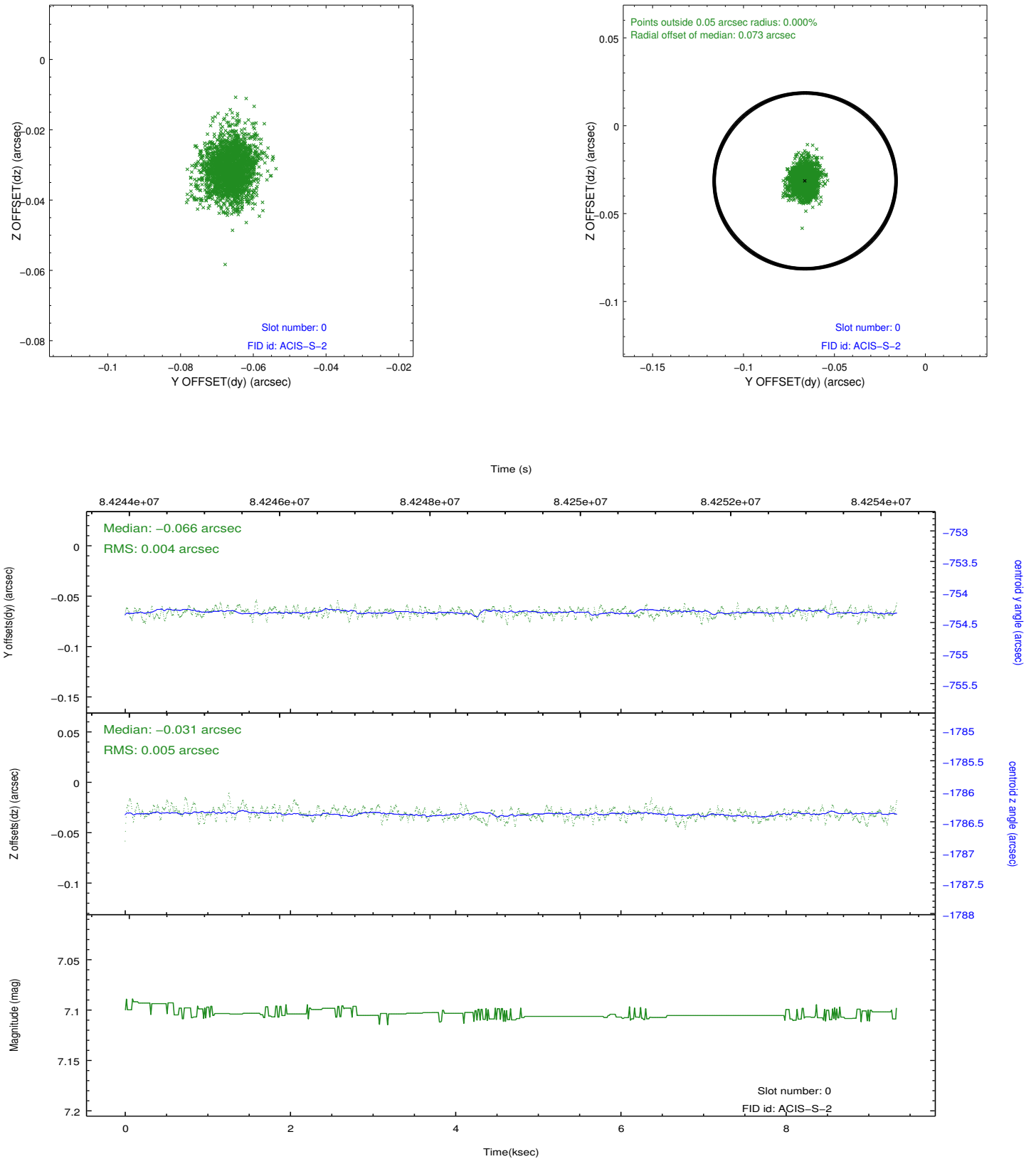


2.4.5 Slot 7

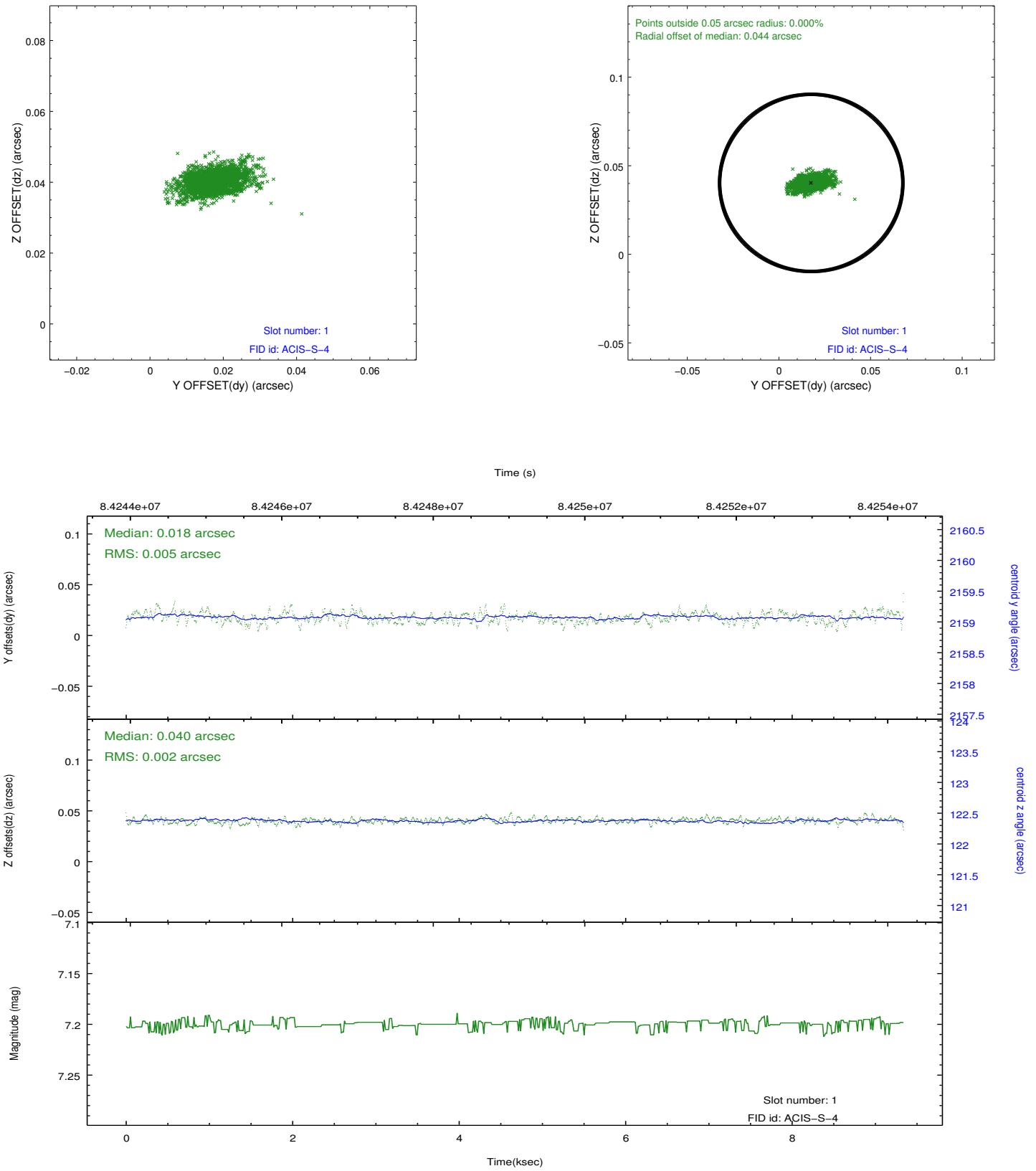


2.5 FID Slots

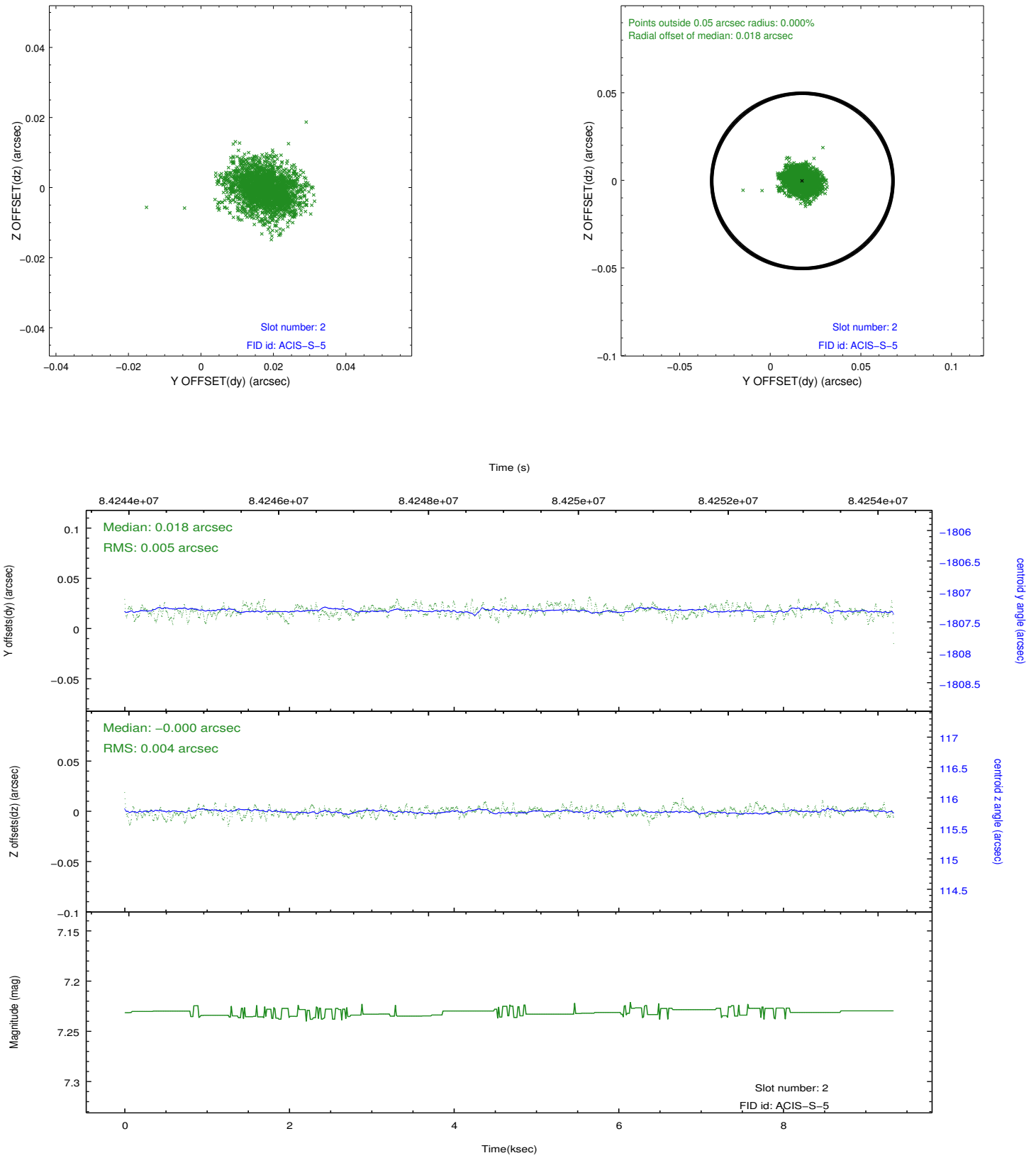
2.5.1 Slot 0



2.5.2 Slot 1



2.5.3 Slot 2



A Summary

A.1 Status

V&V Scientist	Jen Lauer
V&V Date (YYYY-MM-DD)	2012.09.06
V&V Edition	1
V&V Disposition and Status	OK
V&V Charge Time	7.955

A.2 Comments