

V&V Reference Report

L2 ASCDS Version : 7.6.10

Observation 1838 - L2 Version 001
Chandra X-Ray Center

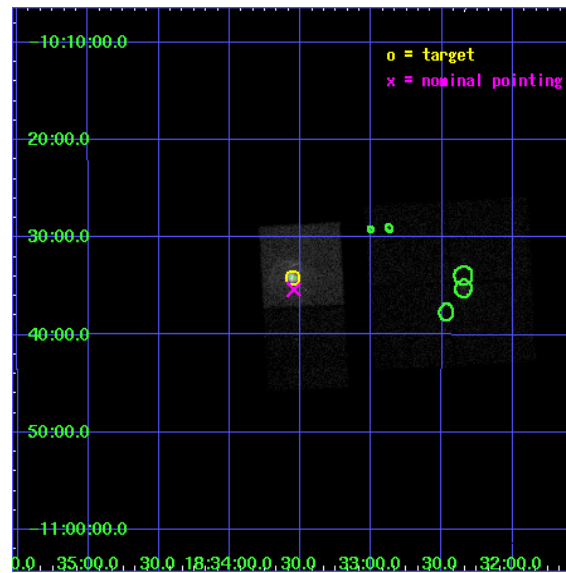
L2 Processing Date : Jun 6 2007

Contents

1	Front	2
2	OBI	3
2.1	OBI	3
2.1.1	Images	3
2.1.2	Bias	3
2.1.3	Parameters	4
2.1.4	Events	4
2.2	Compared Parameters	5
2.3	Aspect	6
2.4	Star Slots	9
2.4.1	Slot 3	9
2.4.2	Slot 4	10
2.4.3	Slot 5	11
2.4.4	Slot 6	12
2.4.5	Slot 7	13
2.5	FID Slots	14
2.5.1	Slot 0	14
2.5.2	Slot 1	15
2.5.3	Slot 2	16
3	Point Sources	17
A	Summary	18
A.1	Status	18
A.2	Comments	18

1 Front

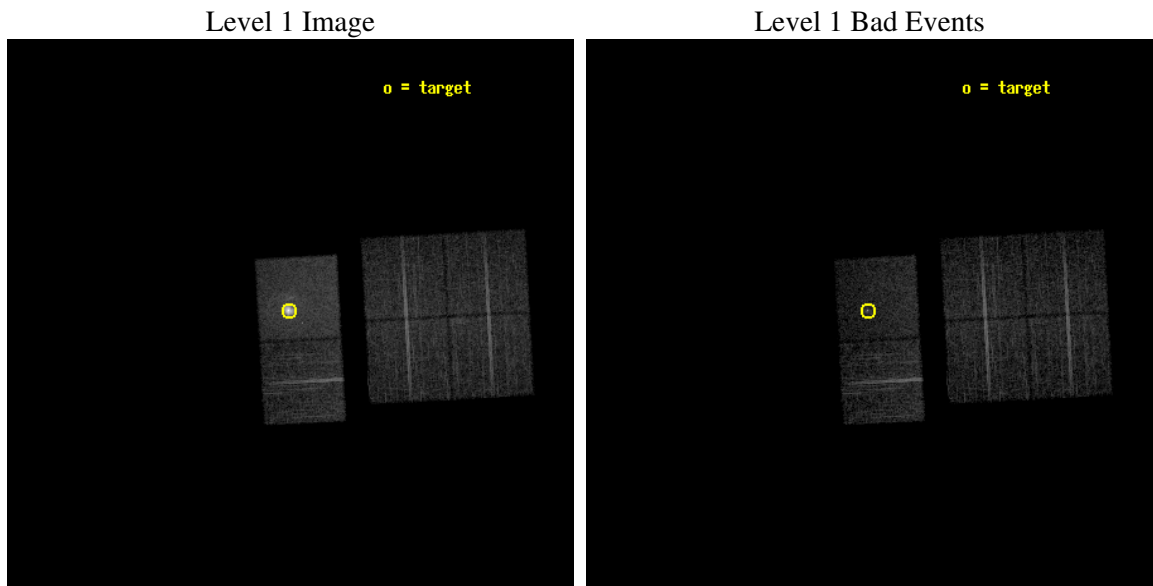
seq_num	590218
obs_id	1838
title	HRC RESPONSE TO CONTINUUM SOURCE.
observer	Dr. CXC Calibration
object	G21.5-0.9 [Chip S3, T=120, Offsets=-1,0,1]
dtcycle	0
cycle	P
ra_targ	278.389583
dec_targ	-10.568528
ra_nom	278.38657206626
dec_nom	-10.589269915682
roll_nom	266.80752046013
revision	2
ontime	7952.0000074059
livetime	7851.3069951925
ontime0	7952.0000074059
ontime1	7948.759017244
ontime2	7952.0000074059
ontime3	7952.0000074059
ontime6	7952.0000074059
ontime7	7952.0000074059
l2events	78479



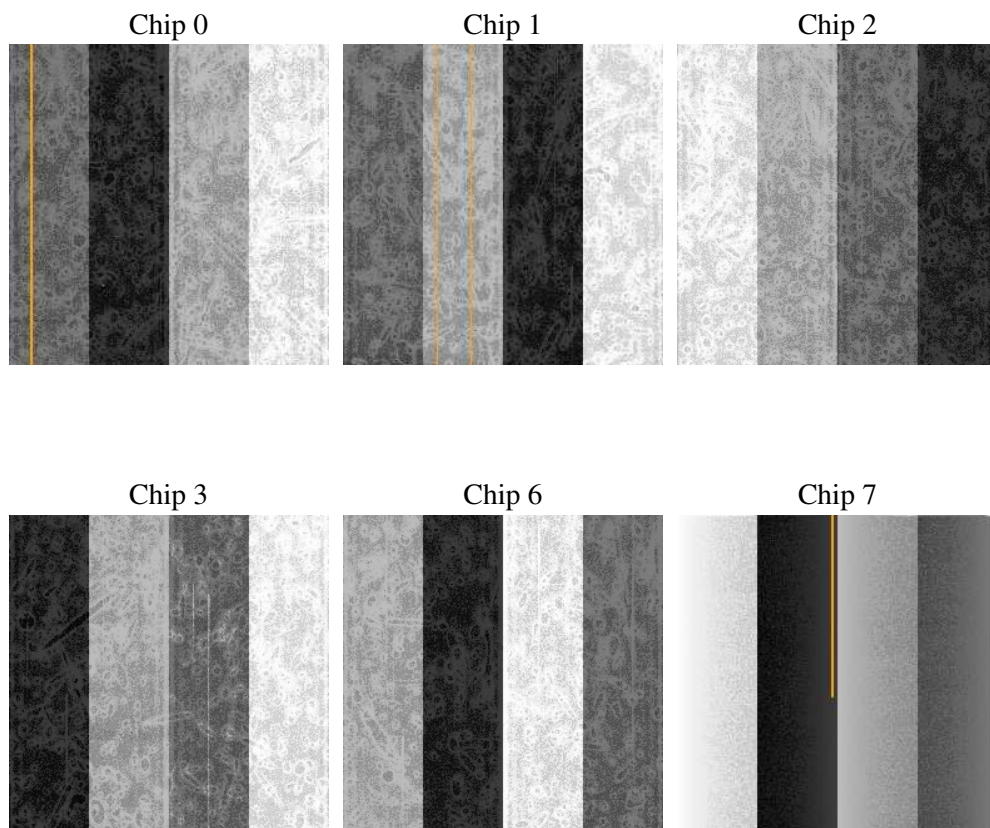
2 OBI

2.1 OBI

2.1.1 Images



2.1.2 Bias



2.1.3 Parameters

obi_num	0
ascdsver	7.6.10
caldsver	3.4.0
date	2007-06-06T13:13:28
revision	2

sched_exp_time	8000.000000
ontime	7952.0000074059
ontime0	7952.0000074059
ontime1	7948.759017244
ontime2	7952.0000074059
ontime3	7952.0000074059
ontime6	7952.0000074059
ontime7	7952.0000074059
l1events	318813

2.1.4 Events

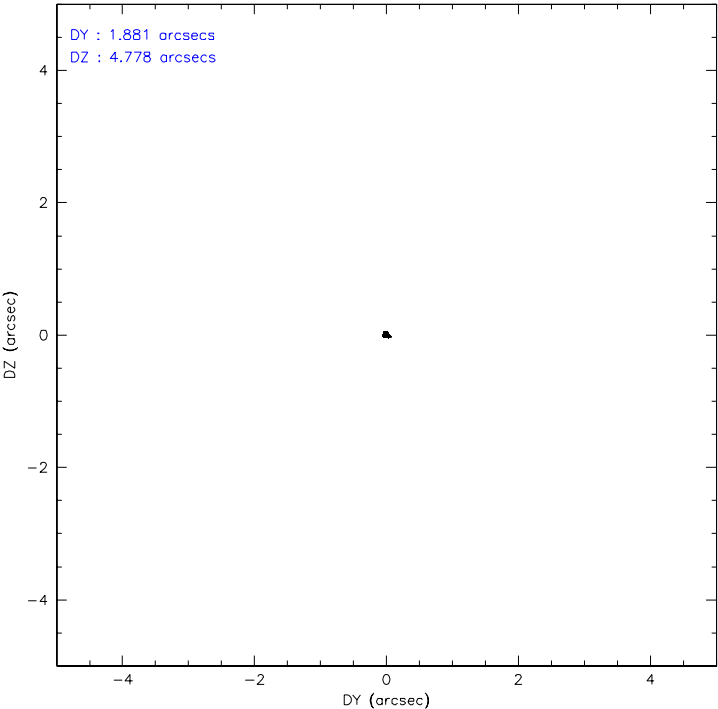
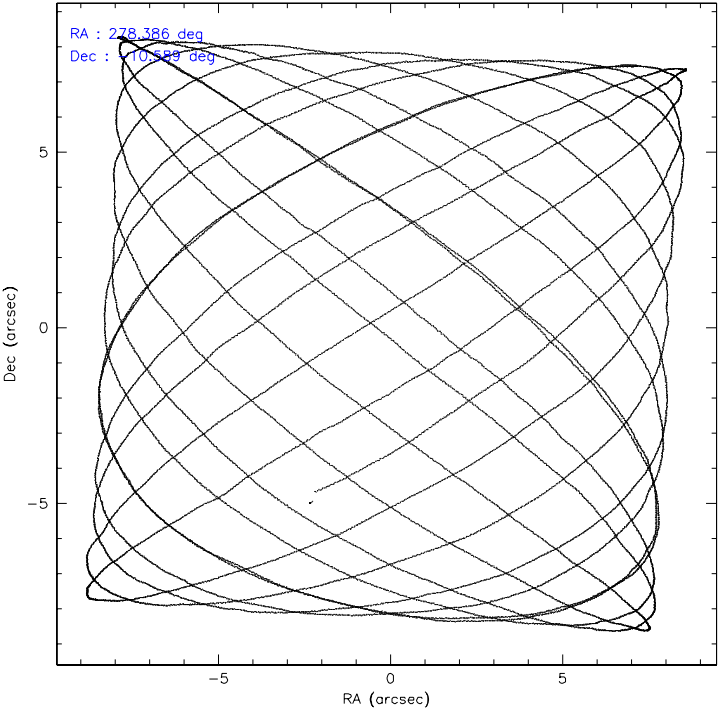
	ccd 0	ccd 1	ccd 2	ccd 3	ccd 6	ccd 7
level 1 events	46331	42289	46807	45879	48861	88646
rejected events	40106	36310	41554	40364	43045	34372
rejected %	86%	85%	88%	87%	88%	38%

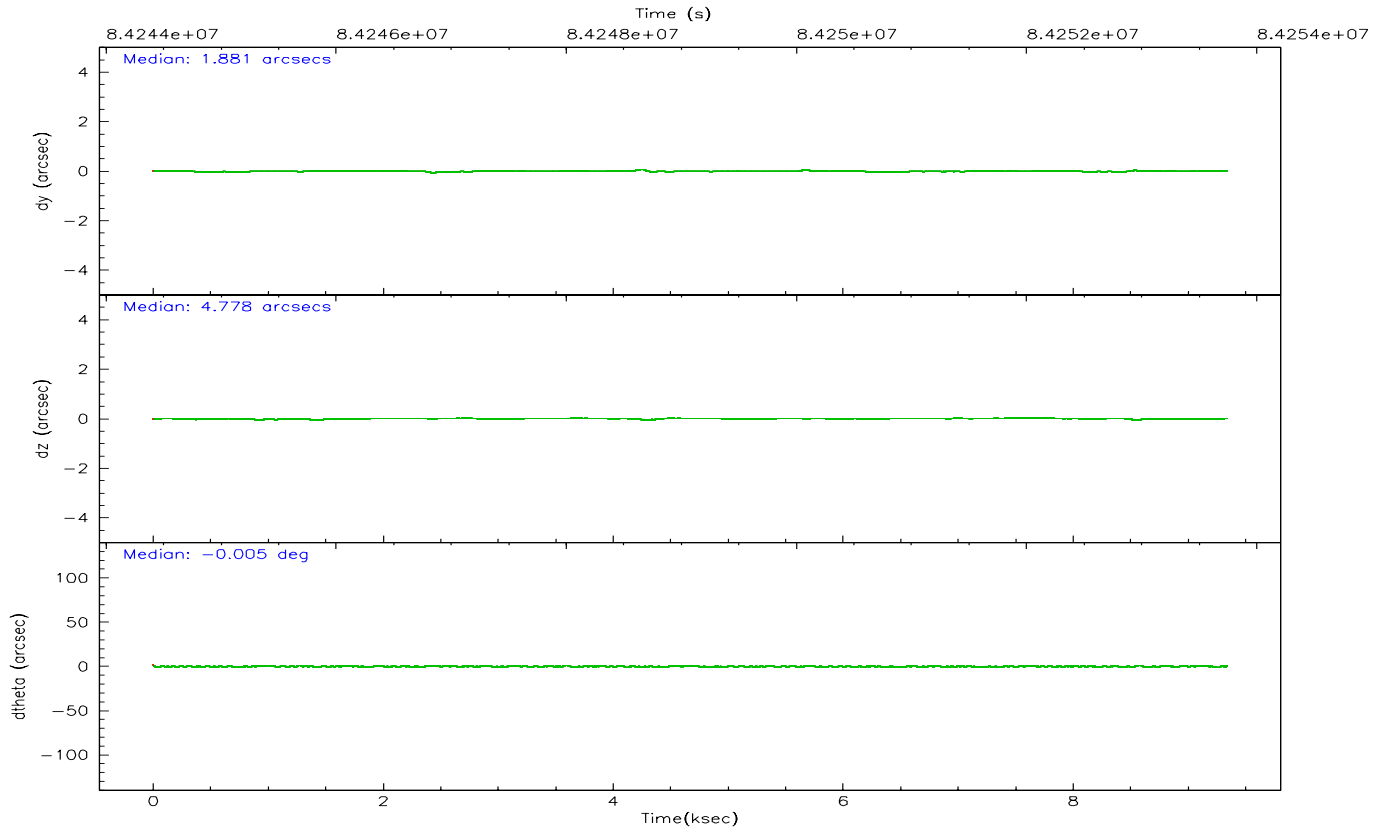
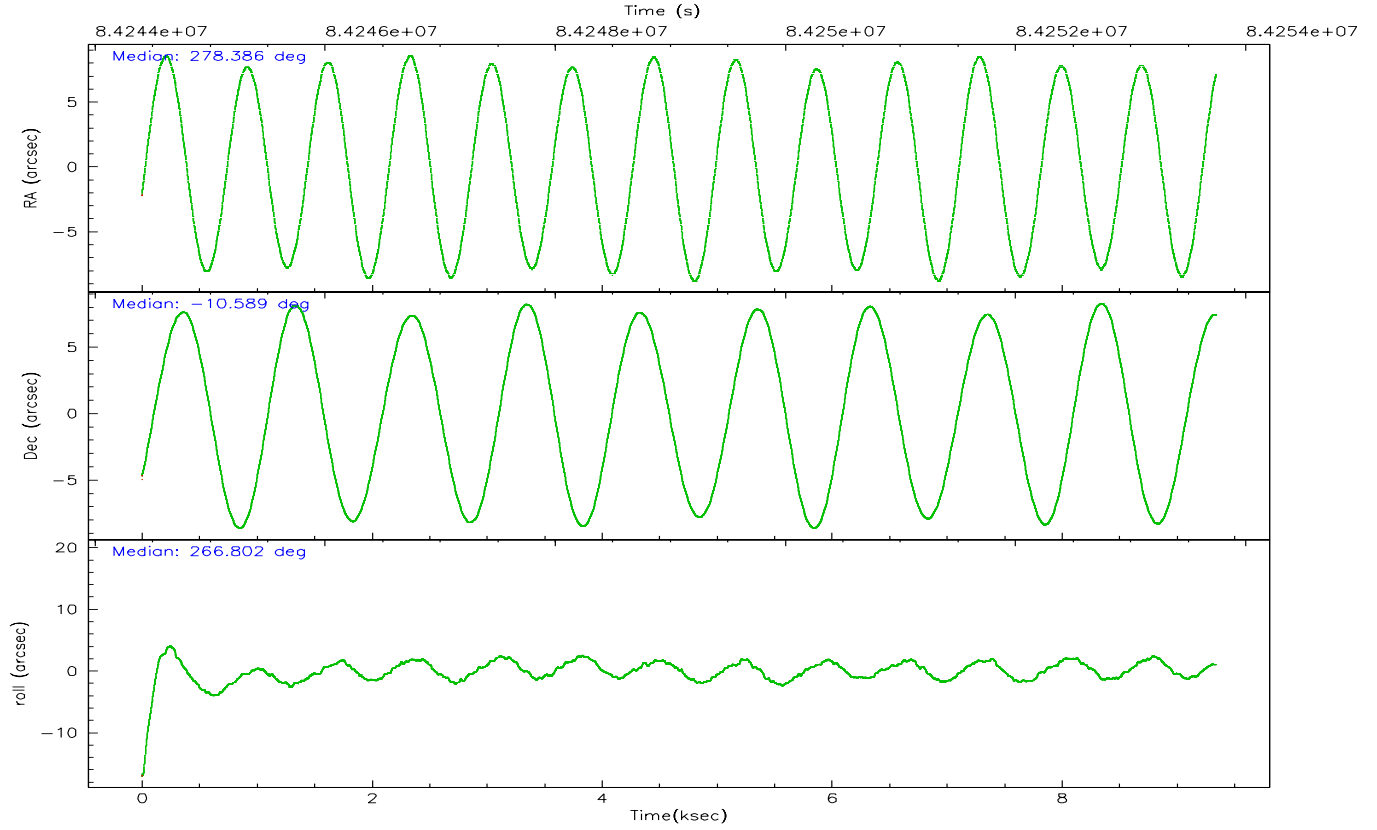
	ccd 0	ccd 1	ccd 2	ccd 3	ccd 6	ccd 7
grade 0 events	2910	2553	2293	2512	2590	8879
	6%	6%	4%	5%	5%	10%
grade 1 events	40	24	20	25	25	135
	0%	0%	0%	0%	0%	0%
grade 2 events	1230	1159	1070	1064	1080	12432
	2%	2%	2%	2%	2%	14%
grade 3 events	578	649	465	517	538	5675
	1%	1%	0%	1%	1%	6%
grade 4 events	524	588	492	524	552	5613
	1%	1%	1%	1%	1%	6%
grade 5 events	1666	1707	1562	1685	1932	5832
	3%	4%	3%	3%	3%	6%
grade 6 events	990	1032	940	904	1057	21721
	2%	2%	2%	1%	2%	24%
grade 7 events	38393	34577	39965	38648	41087	28359
	82%	81%	85%	84%	84%	31%

2.2 Compared Parameters

Parameter	Planned	Actual	Parameter	Planned	Actual
Instrument	ACIS	ACIS	Obspar format version number	6	6
Detector	ACIS-012367	ACIS-012367	Obspar file type	PREDICTED	ACTUAL
Grating	NONE	NONE	Obspar update status	NONE	UPDATED
Data mode	FAINT	FAINT	Number of optional ACIS chips dropped	0	0
Observation mode	POINTING	POINTING	On-chip summing requested	N	N
Pointing RA	278.373832	278.3865720662604	Subarray requested	NONE	NONE
Pointing Dec	-10.564956	-10.58926991568249	Alternating exposures requested	N	N
Pointing Roll	266.648562	266.8075204601342	Primary exposure time	0.000000	3.2
SIM focus pos (mm)	-0.684267	-0.6828225247311905			
SIM defocus (mm)	0	0.001444936568705701			
SIM translation stage pos (mm)	-187.205523	-187.2058600929514			
SIM translation stage offset (mm)	-2.927	-2.926662490056458			
Observation start time	84245748.184000	84244214.754998			
Observation start date	2000-09-02T01:34:44	2000-09-02T01:10:14			
Observation end time	84253748.184000	84253882.042861			
Observation end date	2000-09-02T03:48:04	2000-09-02T03:51:22			
Read mode	TIMED	TIMED			

2.3 Aspect



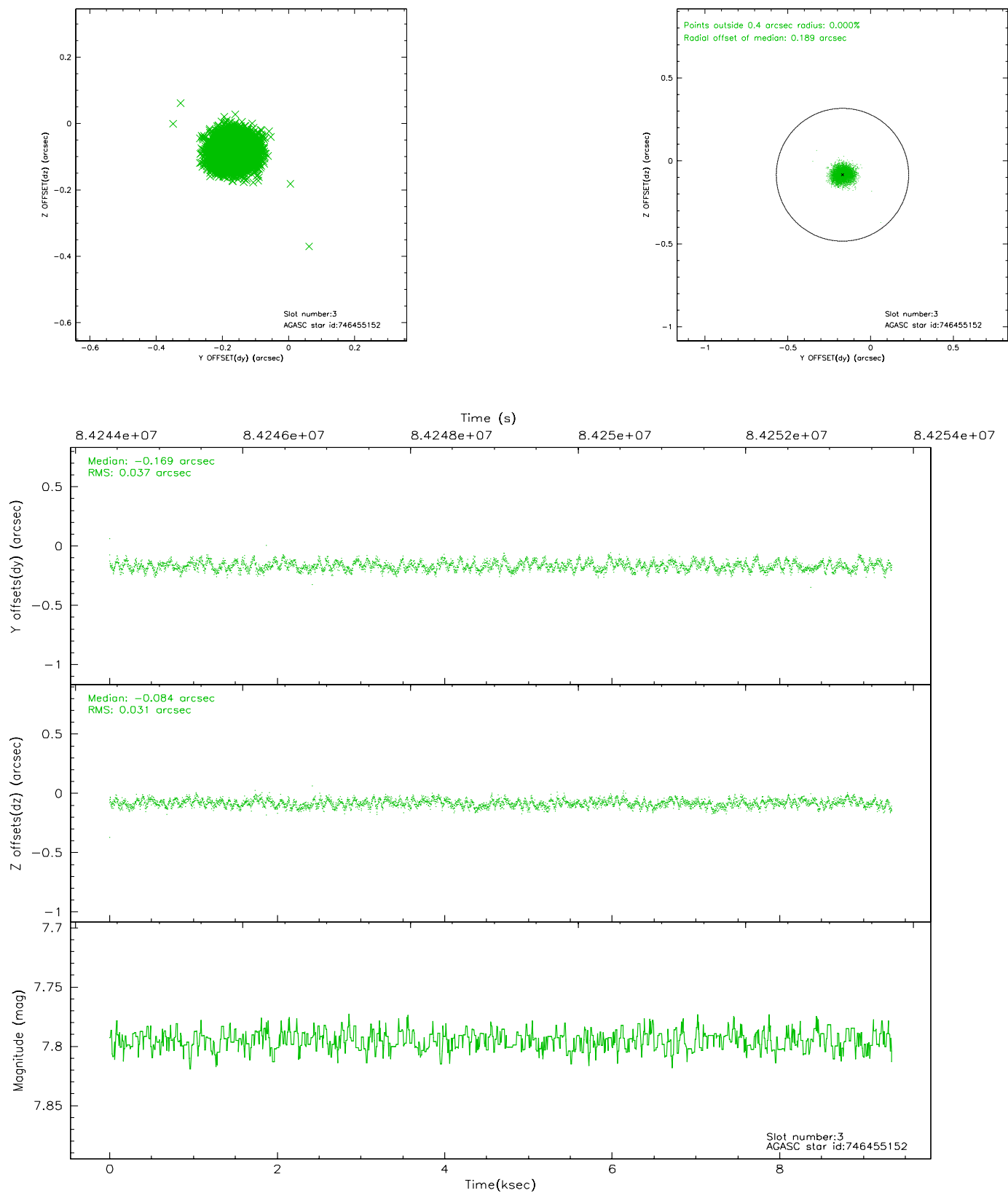


Slot Statistics

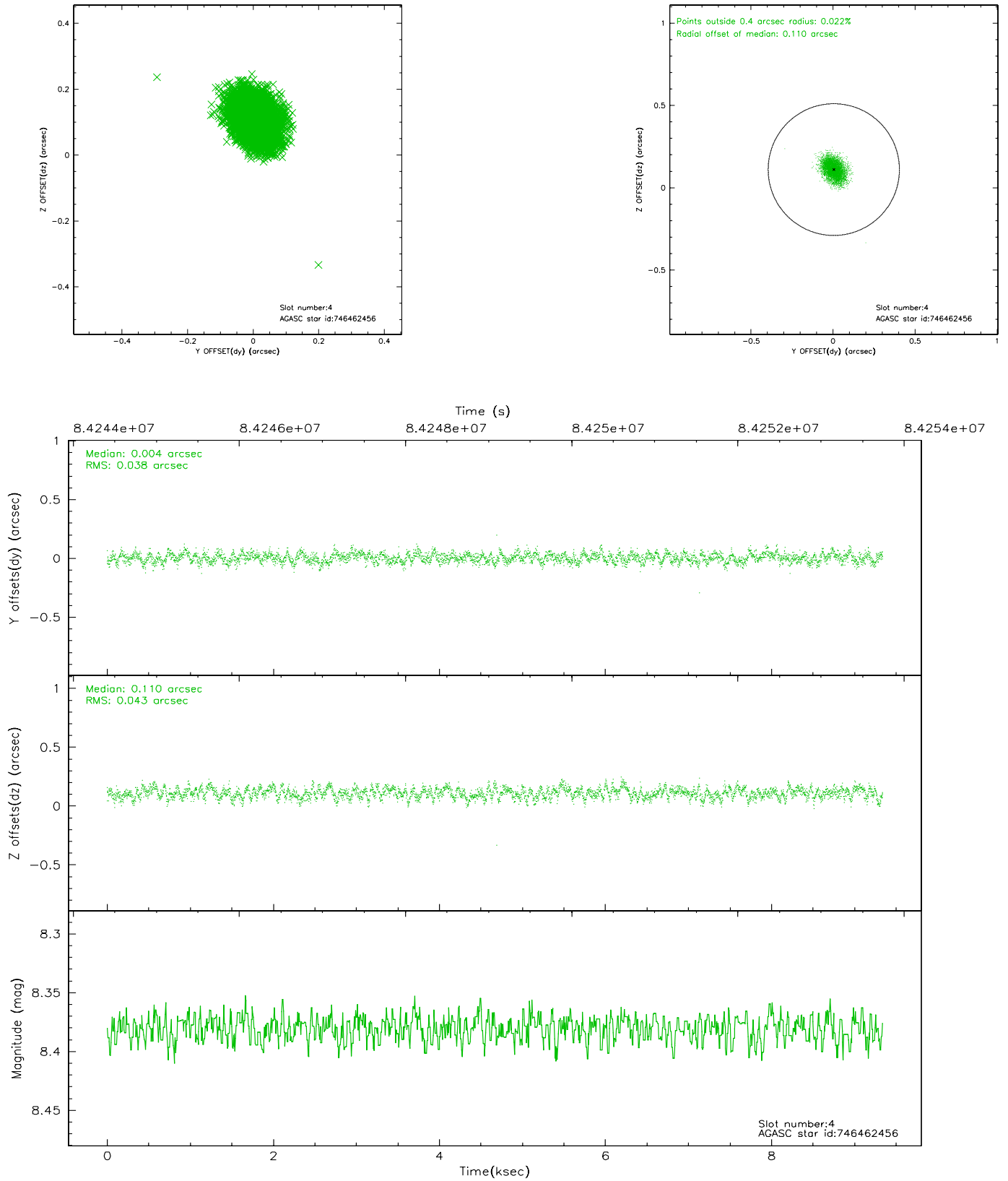
slot	status	id	mag	n_pts	med_dy	med_dz	dr1	dr2	ra	dec	mean_y	mean_z
0	FID	ACIS-S-2	7.11	2279	-0.055	-0.008	0.007	0.011	0.000000	0.000000	-754.32	-1786.33
1	FID	ACIS-S-4	7.20	2279	-0.024	0.029	0.005	0.008	0.000000	0.000000	2158.70	121.60
2	FID	ACIS-S-5	7.23	2279	0.048	-0.012	0.006	0.010	0.000000	0.000000	-1806.34	115.84
3	GUIDE	746455152	7.80	4556	-0.169	-0.084	0.053	0.080	278.447893	-9.976732	-2128.62	138.60
4	GUIDE	746462456	8.38	4557	0.004	0.110	0.061	0.097	278.652171	-10.530173	-181.76	976.85
5	GUIDE	746455112	8.92	4555	0.208	-0.210	0.084	0.158	278.266531	-10.703234	520.25	-349.17
6	GUIDE	746460272	8.93	4558	-0.063	0.117	0.072	0.112	278.847488	-10.152127	-1579.78	1589.26
7	GUIDE	746461728	9.79	4554	0.023	0.062	0.104	0.167	278.986921	-10.530755	-247.32	2160.08

2.4 Star Slots

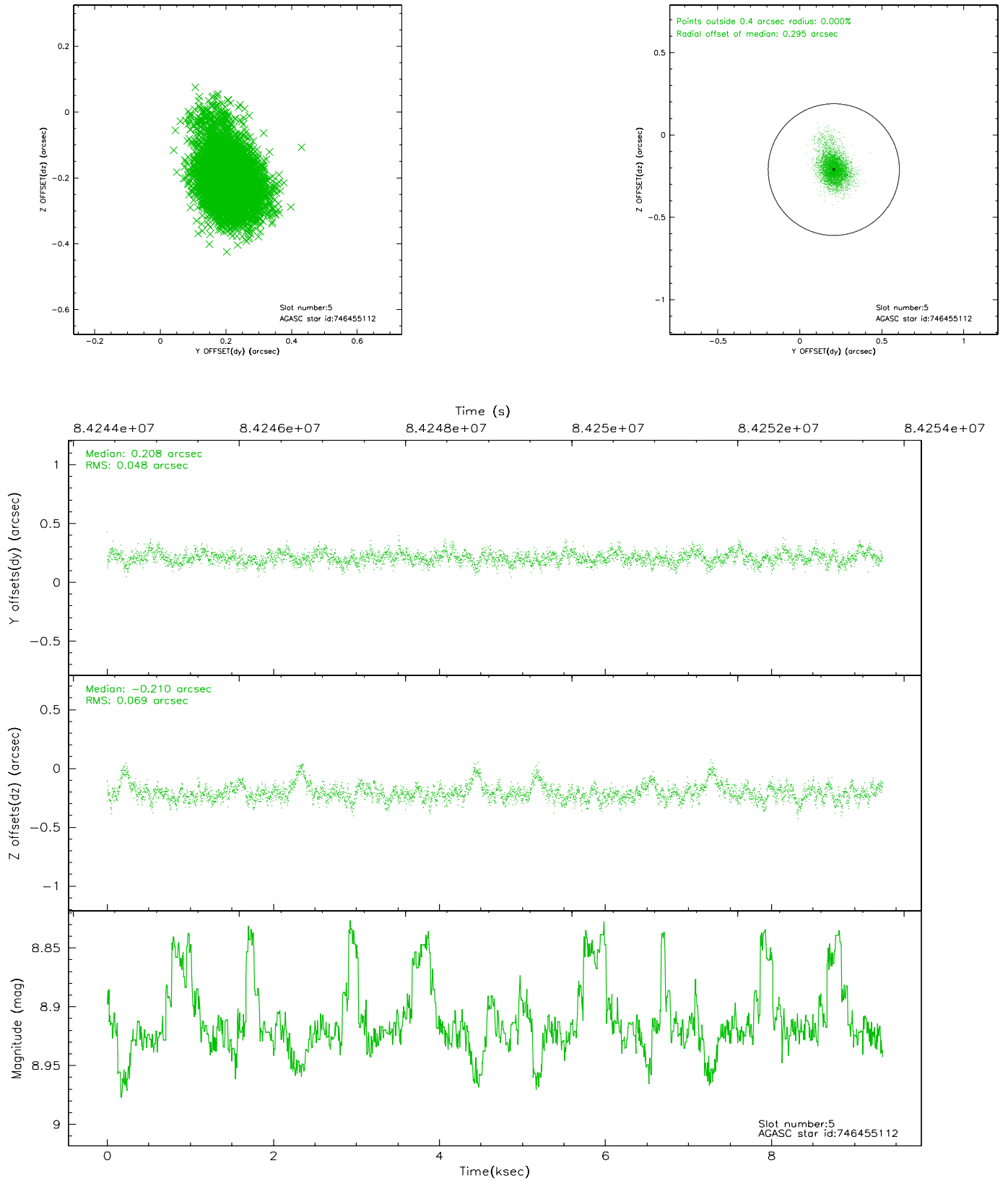
2.4.1 Slot 3



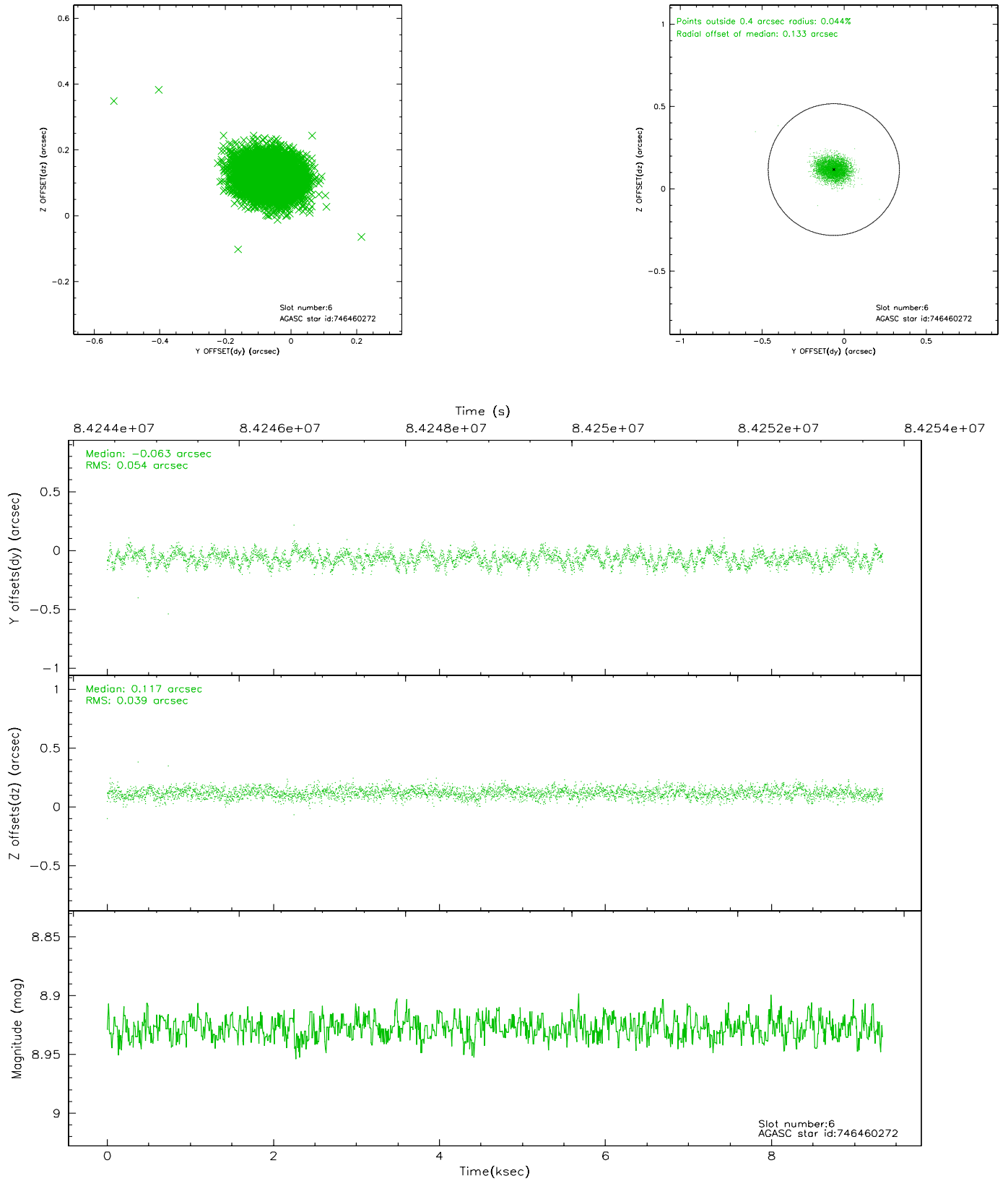
2.4.2 Slot 4



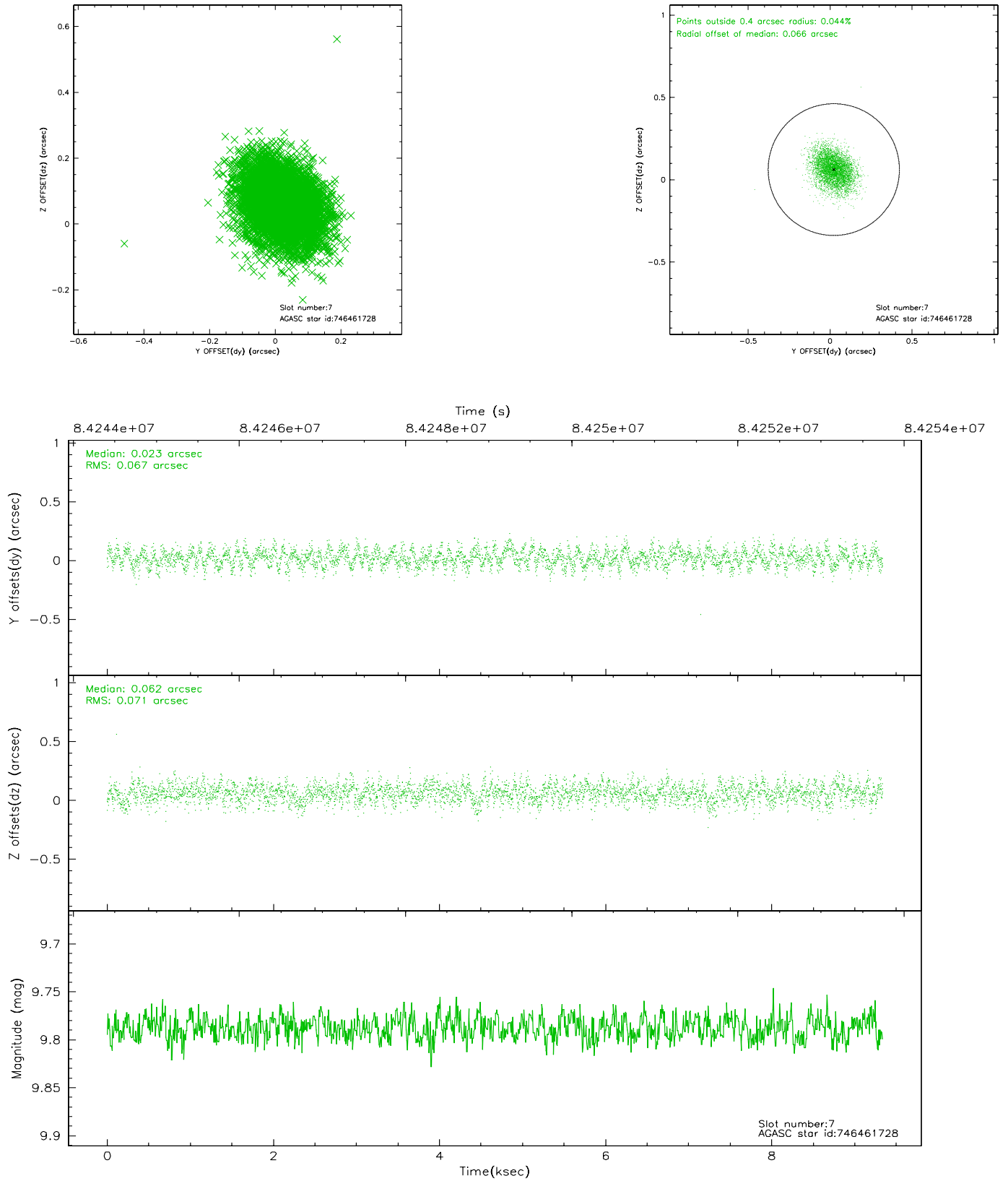
2.4.3 Slot 5



2.4.4 Slot 6

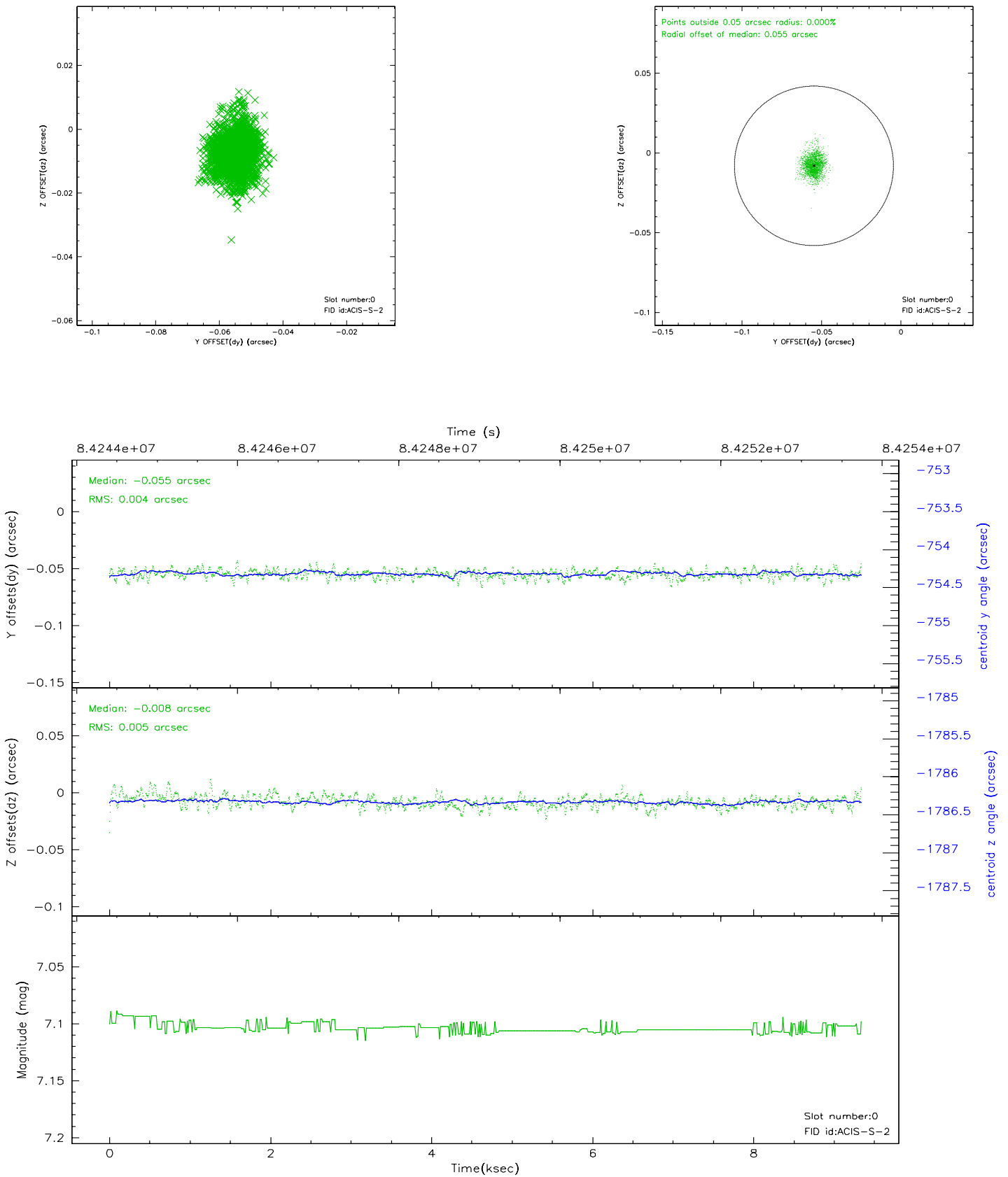


2.4.5 Slot 7

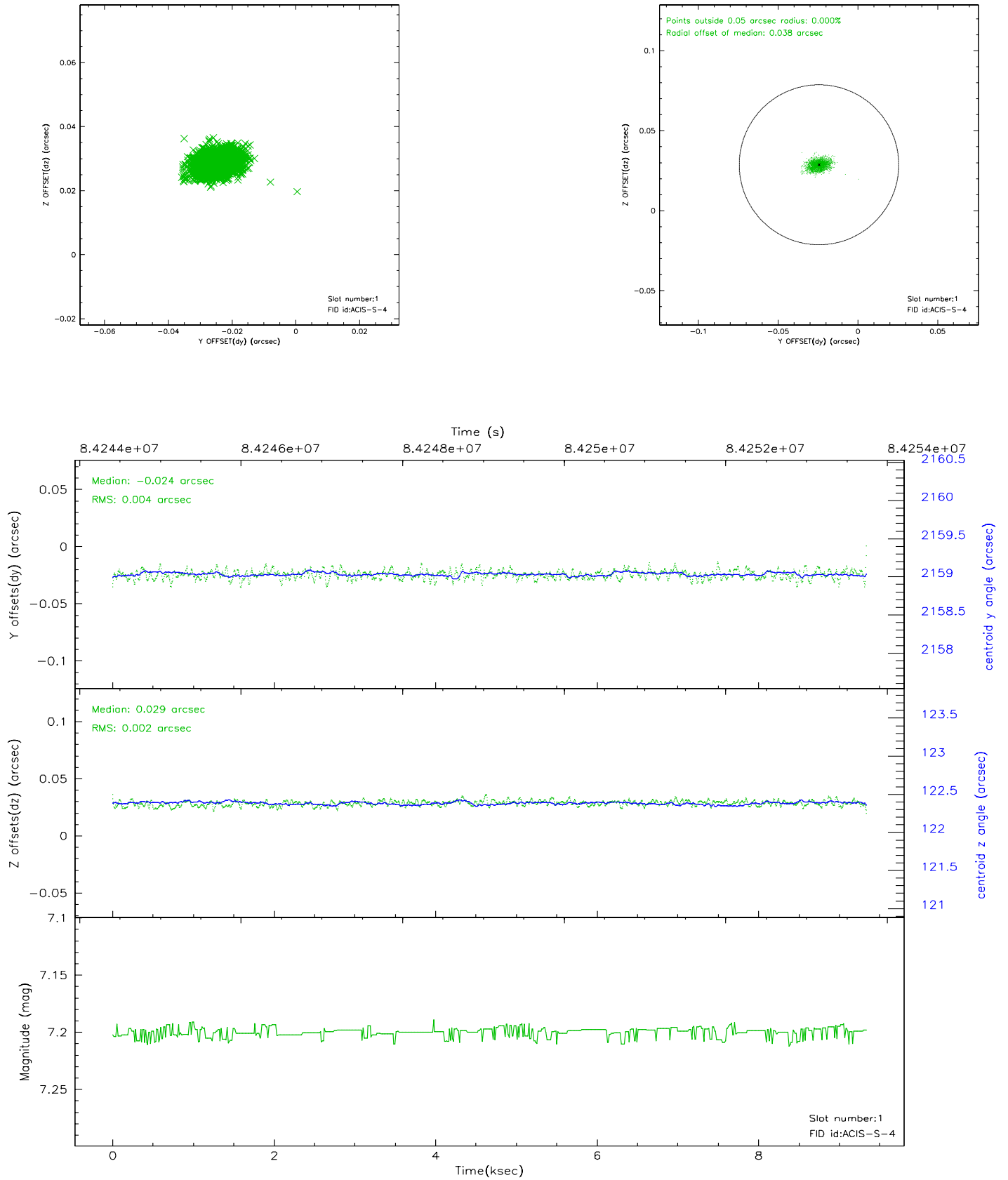


2.5 FID Slots

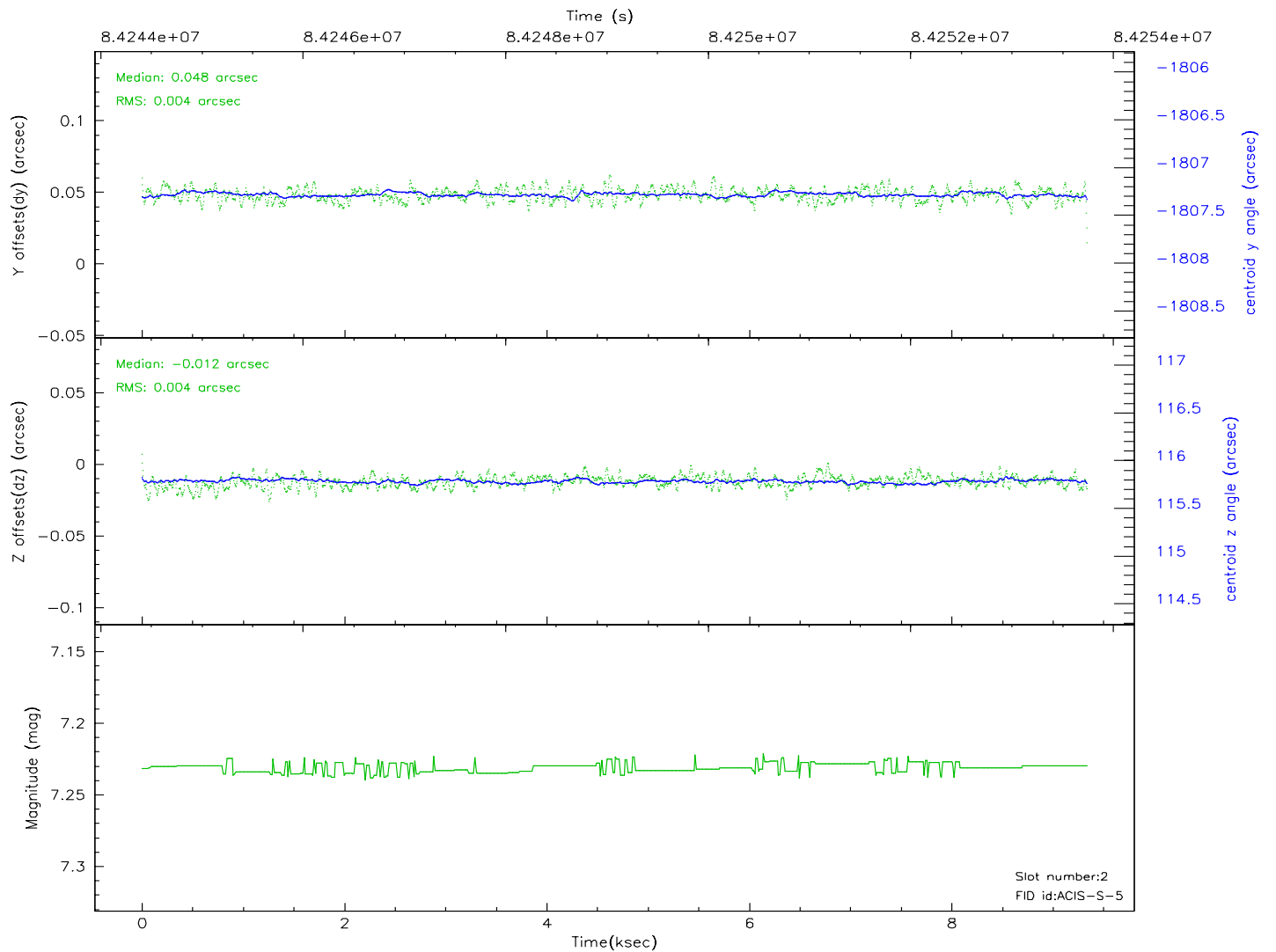
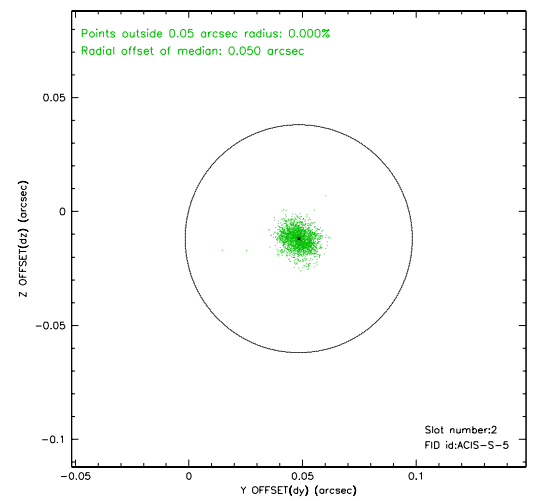
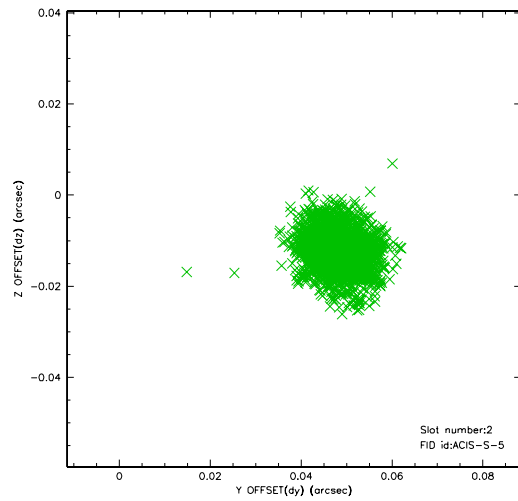
2.5.1 Slot 0



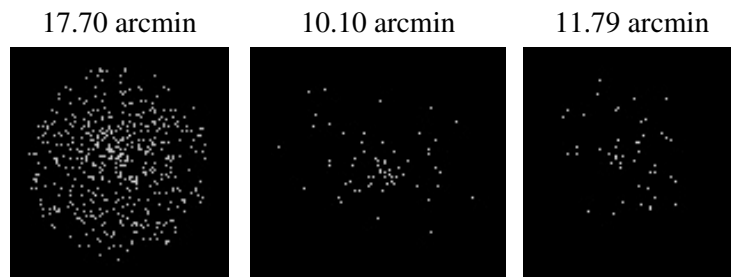
2.5.2 Slot 1



2.5.3 Slot 2



3 Point Sources



A Summary

A.1 Status

V&V Scientist	Jen Lauer
V&V Date (YYYY-MM-DD)	2007.06.06
V&V Edition	1
V&V Disposition and Status	OK
V&V Charge Time	7.955

A.2 Comments