

V&V Reference Report

L2 ASCDS Version : 7.6.10

Observation 1778 - L2 Version 4
Chandra X-Ray Center

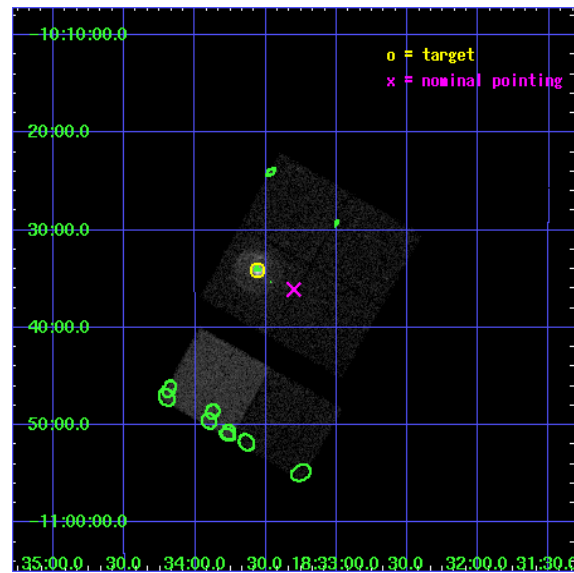
L2 Processing Date : Nov 18 2008

Contents

1	Front	2
2	OBI	3
2.1	OBI	3
2.1.1	Images	3
2.1.2	Bias	3
2.1.3	Parameters	4
2.1.4	Events	4
2.2	Compared Parameters	5
2.3	Aspect	6
2.4	Star Slots	9
2.4.1	Slot 3	9
2.4.2	Slot 4	10
2.4.3	Slot 5	11
2.4.4	Slot 6	12
2.4.5	Slot 7	13
2.5	FID Slots	14
2.5.1	Slot 0	14
2.5.2	Slot 1	15
2.5.3	Slot 2	16
3	Point Sources	17
A	Summary	18
A.1	Status	18
A.2	Comments	18

1 Front

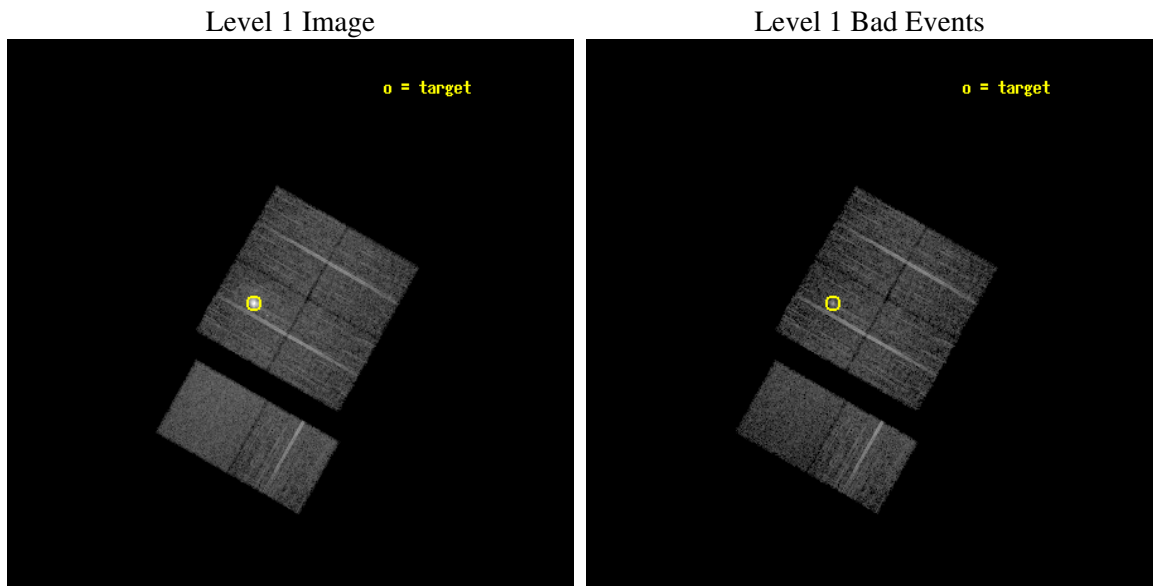
seq_num	590204
obs_id	1778
title	HRC RESPONSE TO CONTINUUM SOURCE.
observer	Dr. CXC Calibration
object	G21.5-0.9 [Chip I3, T=110, Offsets=-4,0,2]
dtcycle	0
cycle	P
ra_targ	278.389583
dec_targ	-10.568528
ra_nom	278.32543314432
dec_nom	-10.60170458846
roll_nom	209.47887781055
revision	4
ontime	7318.4000068158
livetime	7225.7300193181
ontime0	7318.4000068158
ontime1	7318.4000068158
ontime2	7318.4000068158
ontime3	7318.4000068158
ontime6	7318.4000068158
ontime7	7318.4000068158
l2events	67543



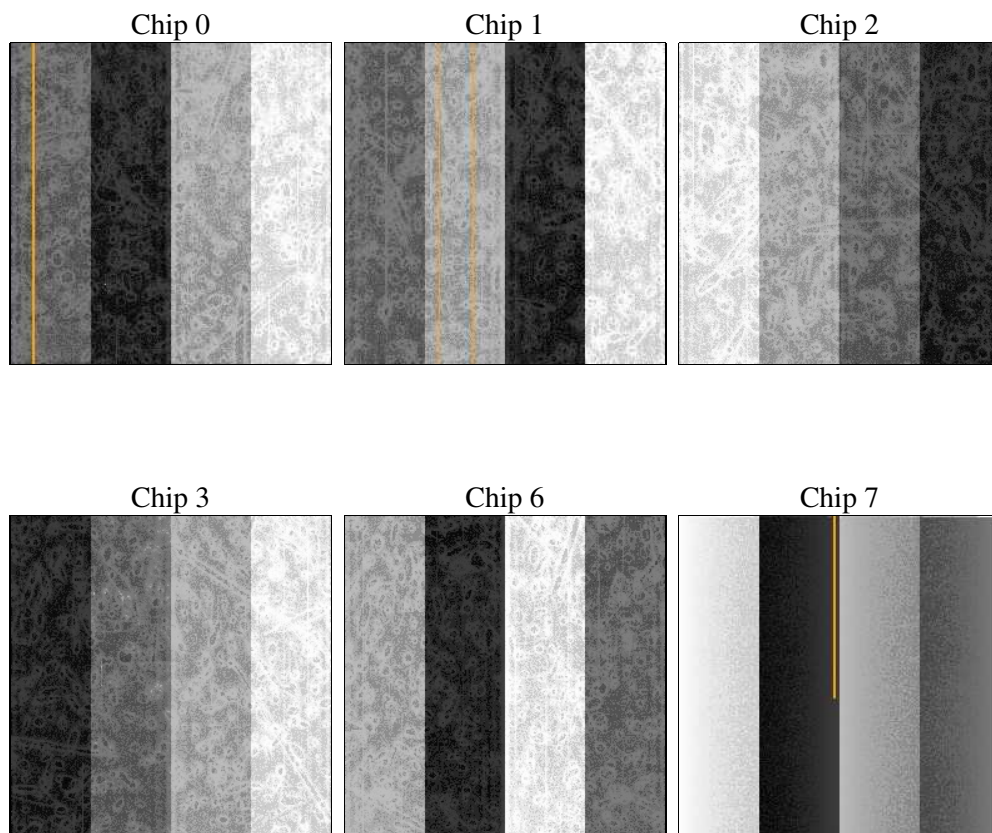
2 OBI

2.1 OBI

2.1.1 Images



2.1.2 Bias



2.1.3 Parameters

obi_num	0
ascdsver	7.6.11.9
caldbver	3.5.0
date	2008-11-18T23:12:45
revision	4

sched_exp_time	7560.000000
ontime	7318.4000068158
ontime0	7318.4000068158
ontime1	7318.4000068158
ontime2	7318.4000068158
ontime3	7318.4000068158
ontime6	7318.4000068158
ontime7	7318.4000068158
l1events	333340

2.1.4 Events

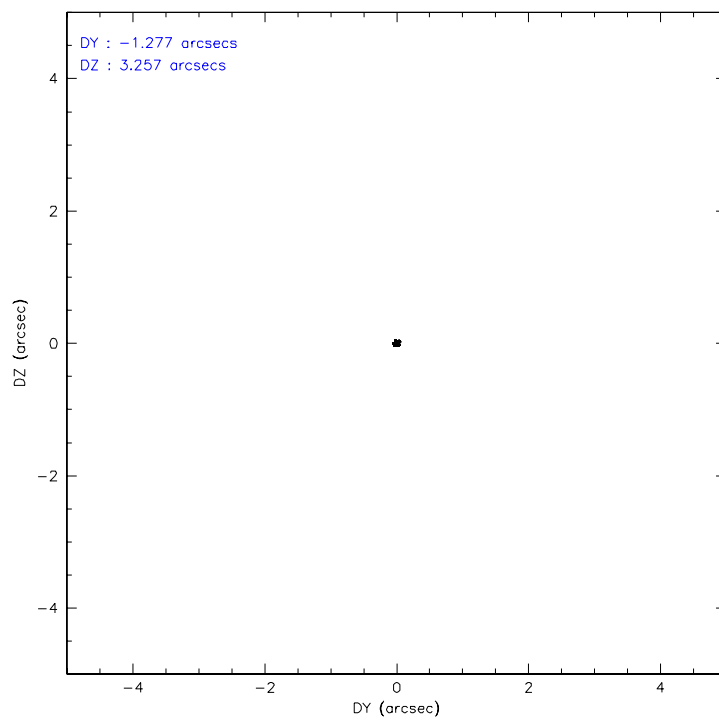
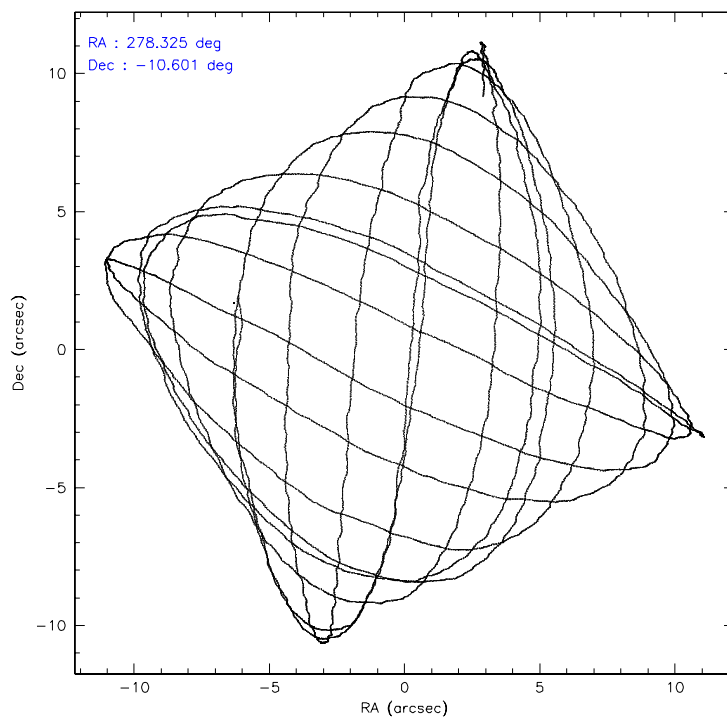
	ccd 0	ccd 1	ccd 2	ccd 3	ccd 6	ccd 7
level 1 events	48099	48870	51866	73576	53824	57105
rejected events	42674	42739	46713	46470	48534	35561
rejected %	88%	87%	90%	63%	90%	62%

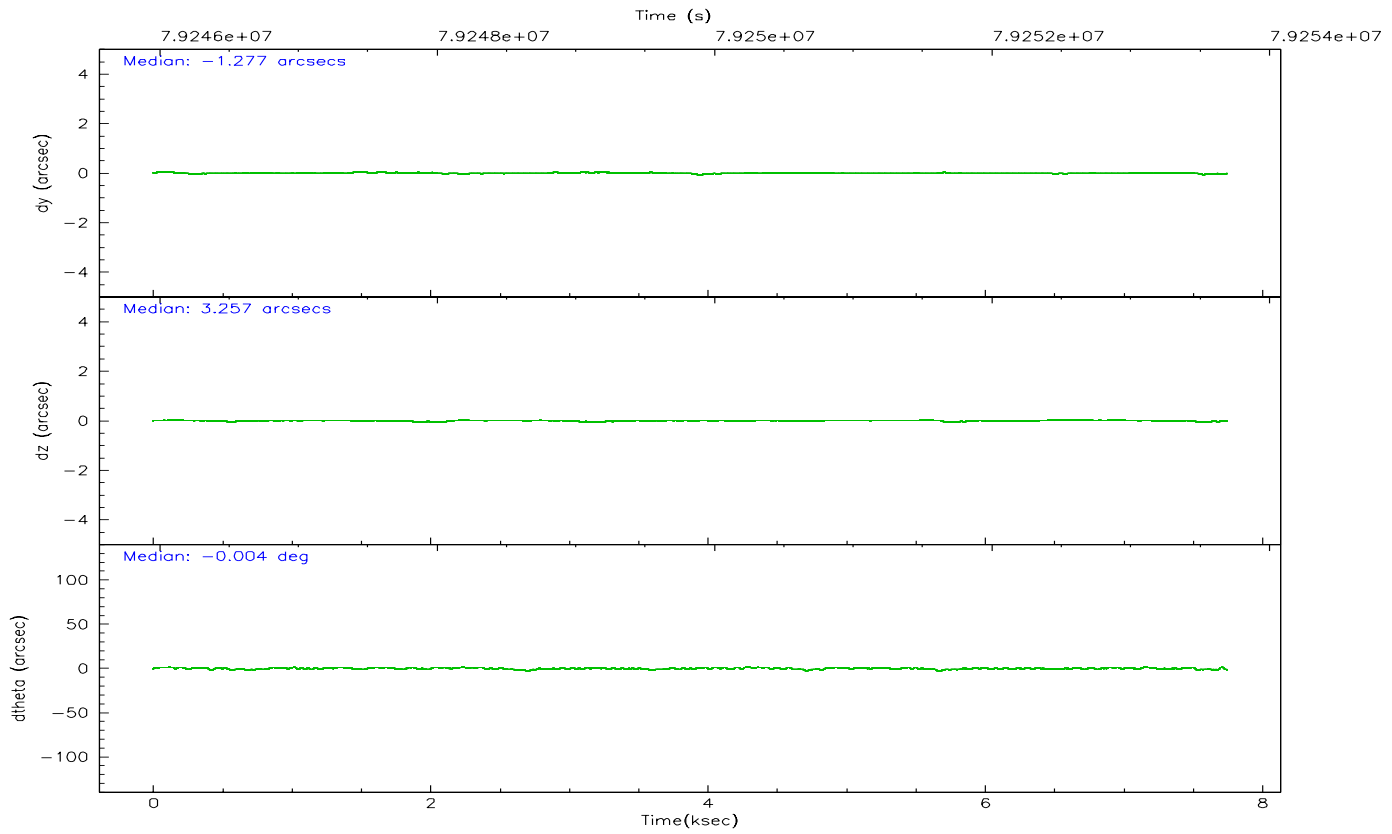
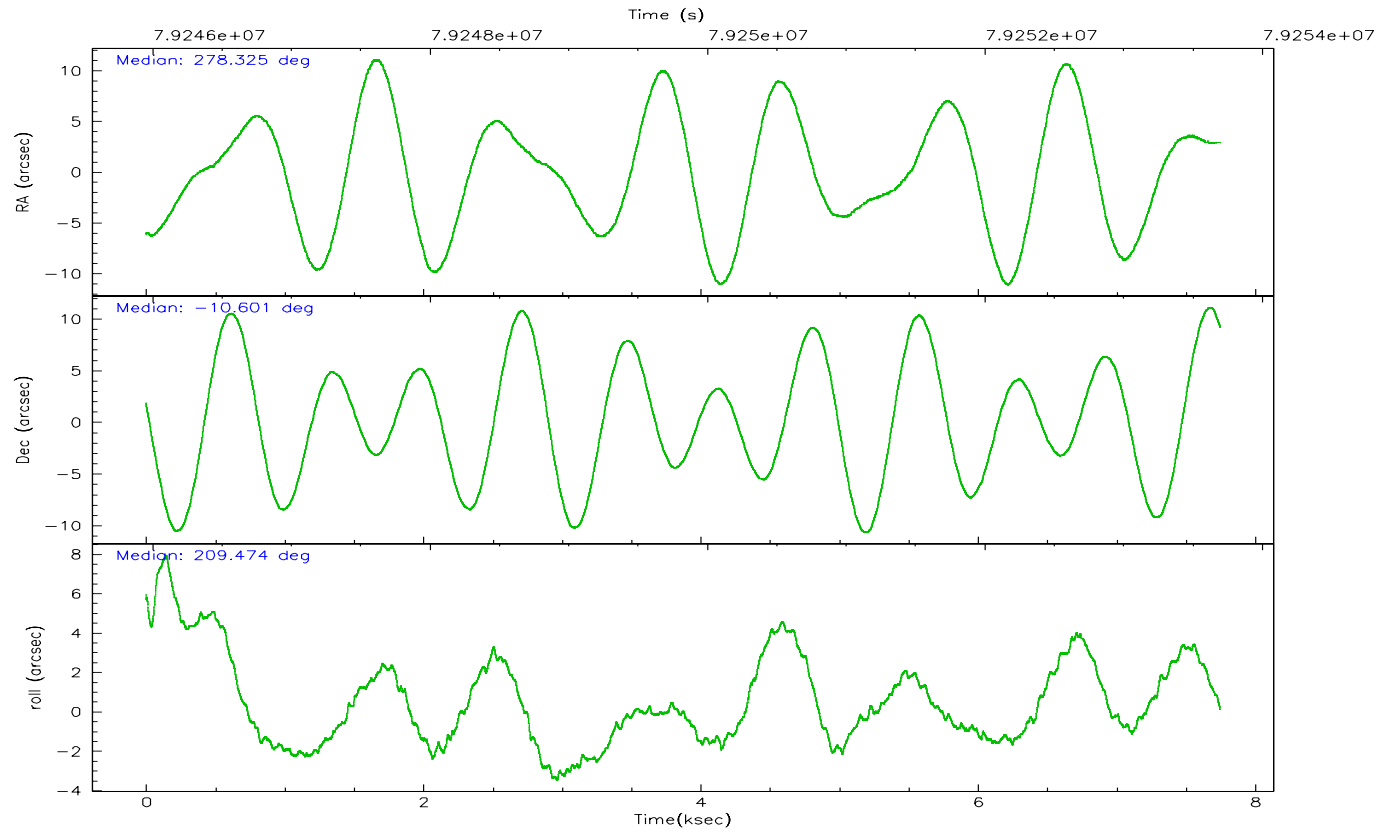
	ccd 0	ccd 1	ccd 2	ccd 3	ccd 6	ccd 7
grade 0 events	1456	1679	1164	13410	988	1217
	3%	3%	2%	18%	1%	2%
grade 1 events	13	13	6	88	19	25
	0%	0%	0%	0%	0%	0%
grade 2 events	2043	2145	2110	8955	2147	4584
	4%	4%	4%	12%	3%	8%
grade 3 events	357	457	317	1031	330	1278
	0%	0%	0%	1%	0%	2%
grade 4 events	332	424	361	920	307	1153
	0%	0%	0%	1%	0%	2%
grade 5 events	1002	1046	938	1255	1154	3522
	2%	2%	1%	1%	2%	6%
grade 6 events	1247	1432	1204	2817	1521	13332
	2%	2%	2%	3%	2%	23%
grade 7 events	41649	41674	45766	45100	47358	31994
	86%	85%	88%	61%	87%	56%

2.2 Compared Parameters

Parameter	Planned	Actual	Parameter	Planned	Actual
Instrument	ACIS	ACIS	Obspar format version number	6	6
Detector	ACIS-012367	ACIS-012367	Obspar file type	PREDICTED	ACTUAL
Grating	NONE	NONE	Obspar update status	NONE	UPDATED
Data mode	FAINT	FAINT	Number of optional ACIS chips dropped	0	0
Observation mode	POINTING	POINTING	On-chip summing requested	N	N
Pointing RA	278.339785	278.3254331443204	Subarray requested	NONE	NONE
Pointing Dec	-10.578014	-10.60170458846046	Alternating exposures requested	N	N
Pointing Roll	209.272820	209.4788778105514	Primary exposure time	0.000000	3.2
SIM focus pos (mm)	-0.782348	-0.7809083437167272			
SIM defocus (mm)	0	0.001439871863259334			
SIM translation stage pos (mm)	-226.272463	-226.2682626179875			
SIM translation stage offset (mm)	-7.32	-7.32419038494217			
Observation start time	79246136.184000	79245760.04380099			
Observation start date	2000-07-06T04:47:52	2000-07-06T04:42:40			
Observation end time	79253696.184000	79253829.86909799			
Observation end date	2000-07-06T06:53:52	2000-07-06T06:57:09			
Read mode	TIMED	TIMED			

2.3 Aspect



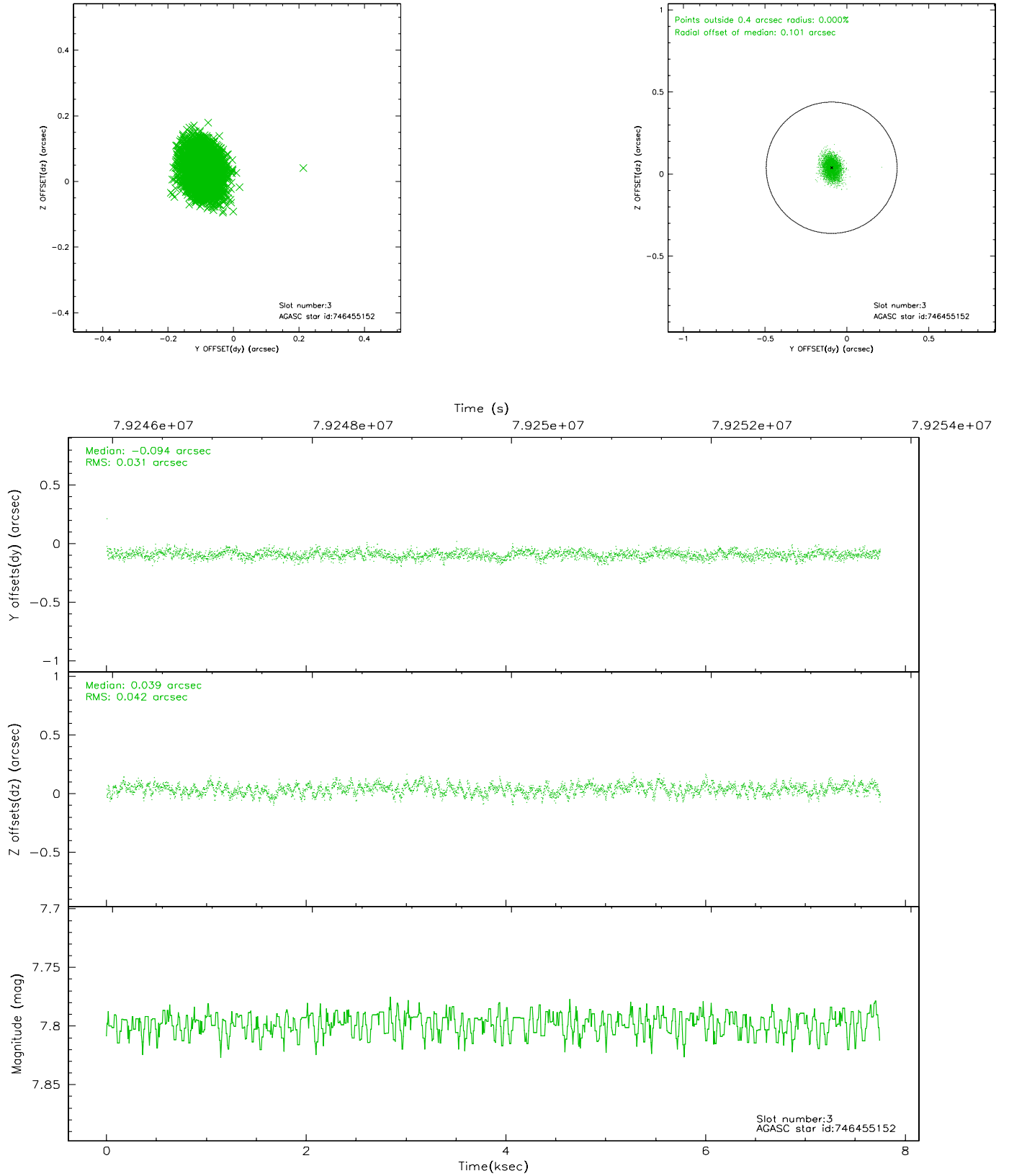


Slot Statistics

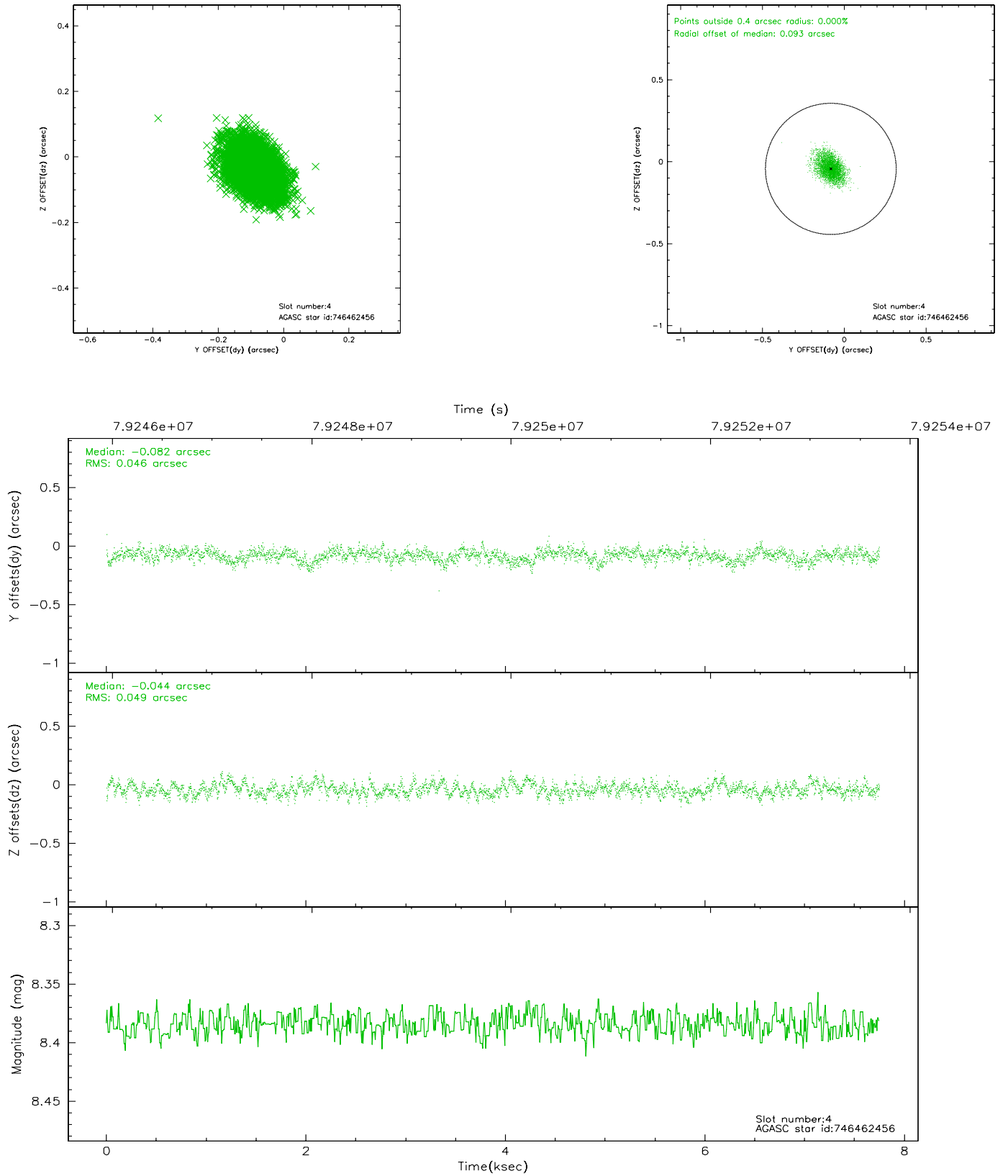
slot	status	id	mag	n_pts	med_dy	med_dz	dr1	dr2	ra	dec	mean_y	mean_z
0	FID	ACIS-I-2	7.17	1889	-0.053	-0.037	0.009	0.015	0.000000	0.000000	-753.53	-982.35
1	FID	ACIS-I-4	7.15	1890	-0.050	0.047	0.006	0.010	0.000000	0.000000	2160.12	923.48
2	FID	ACIS-I-5	7.23	1890	0.002	0.059	0.009	0.015	0.000000	0.000000	-1806.02	921.16
3	GUIDE	746455152	7.80	3780	-0.094	0.039	0.055	0.090	278.447893	-9.976732	-1392.32	-1699.97
4	GUIDE	746462456	8.38	3781	-0.082	-0.044	0.070	0.118	278.652171	-10.530173	-1048.43	391.22
5	GUIDE	746455112	8.93	3780	0.209	-0.111	0.063	0.107	278.266531	-10.703234	446.79	267.42
6	GUIDE	746460328	9.80	3779	0.008	0.023	0.119	0.197	278.603974	-9.898096	-2013.28	-1675.90
7	GUIDE	746995400	9.48	3777	-0.041	0.091	0.092	0.150	278.078957	-11.289885	2056.31	1786.27

2.4 Star Slots

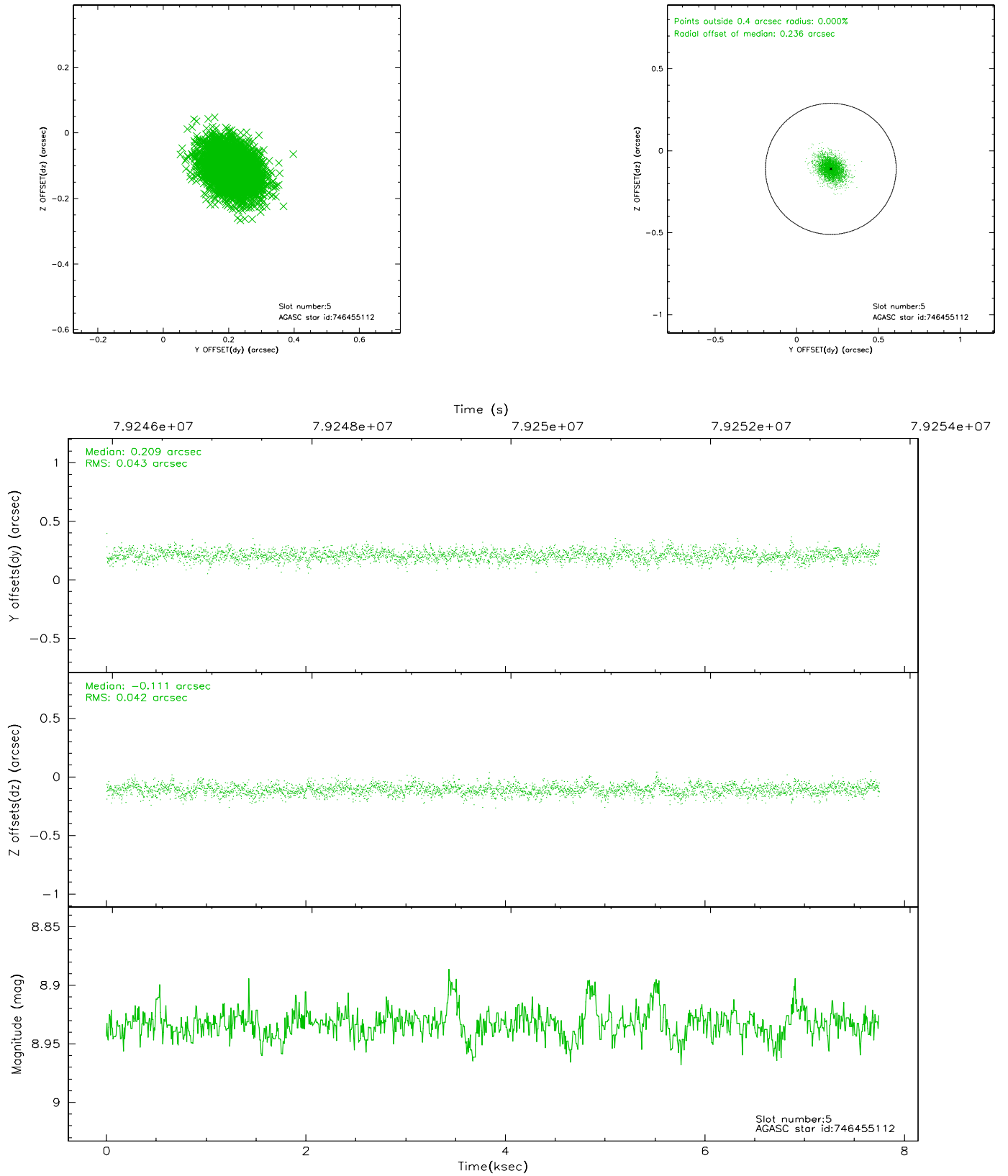
2.4.1 Slot 3



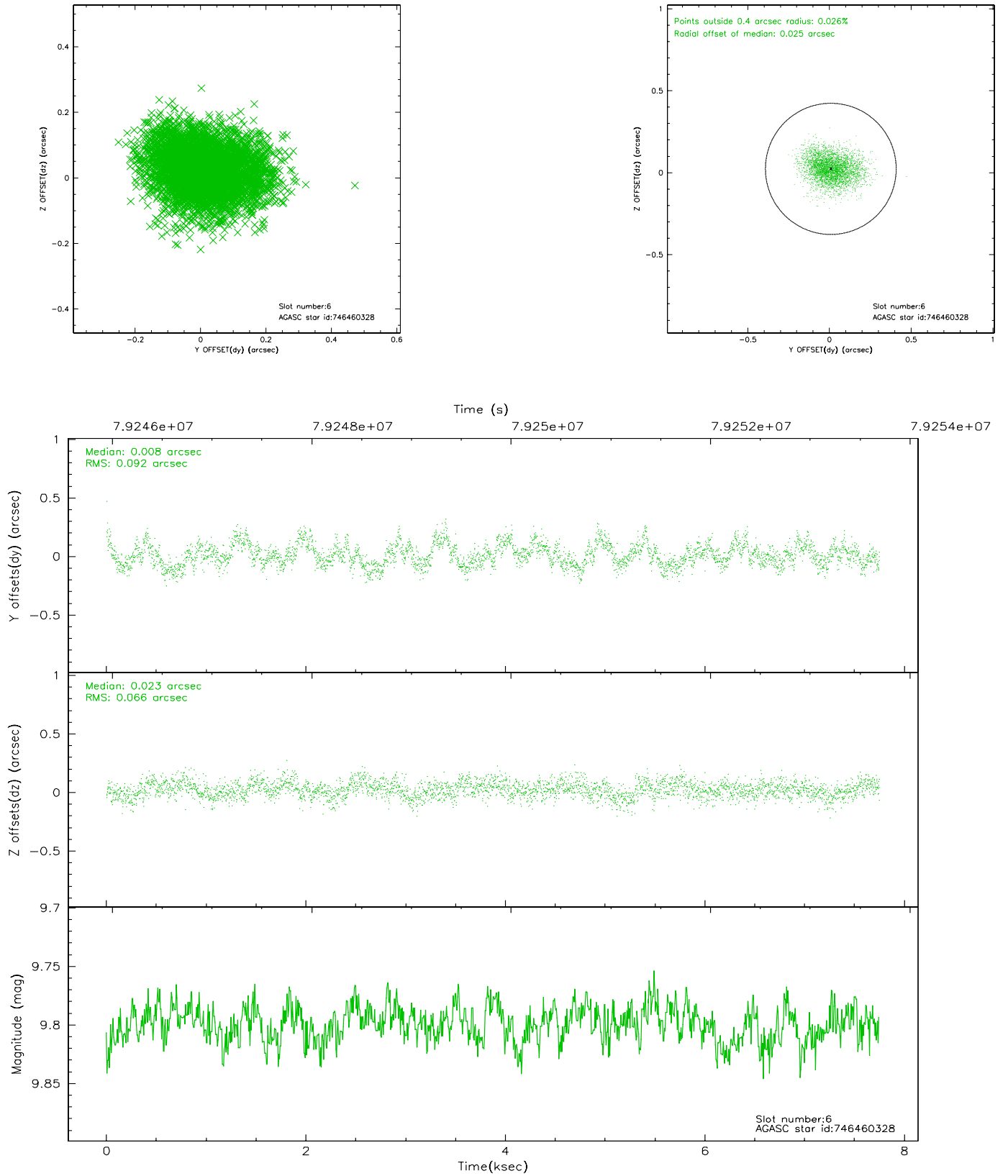
2.4.2 Slot 4



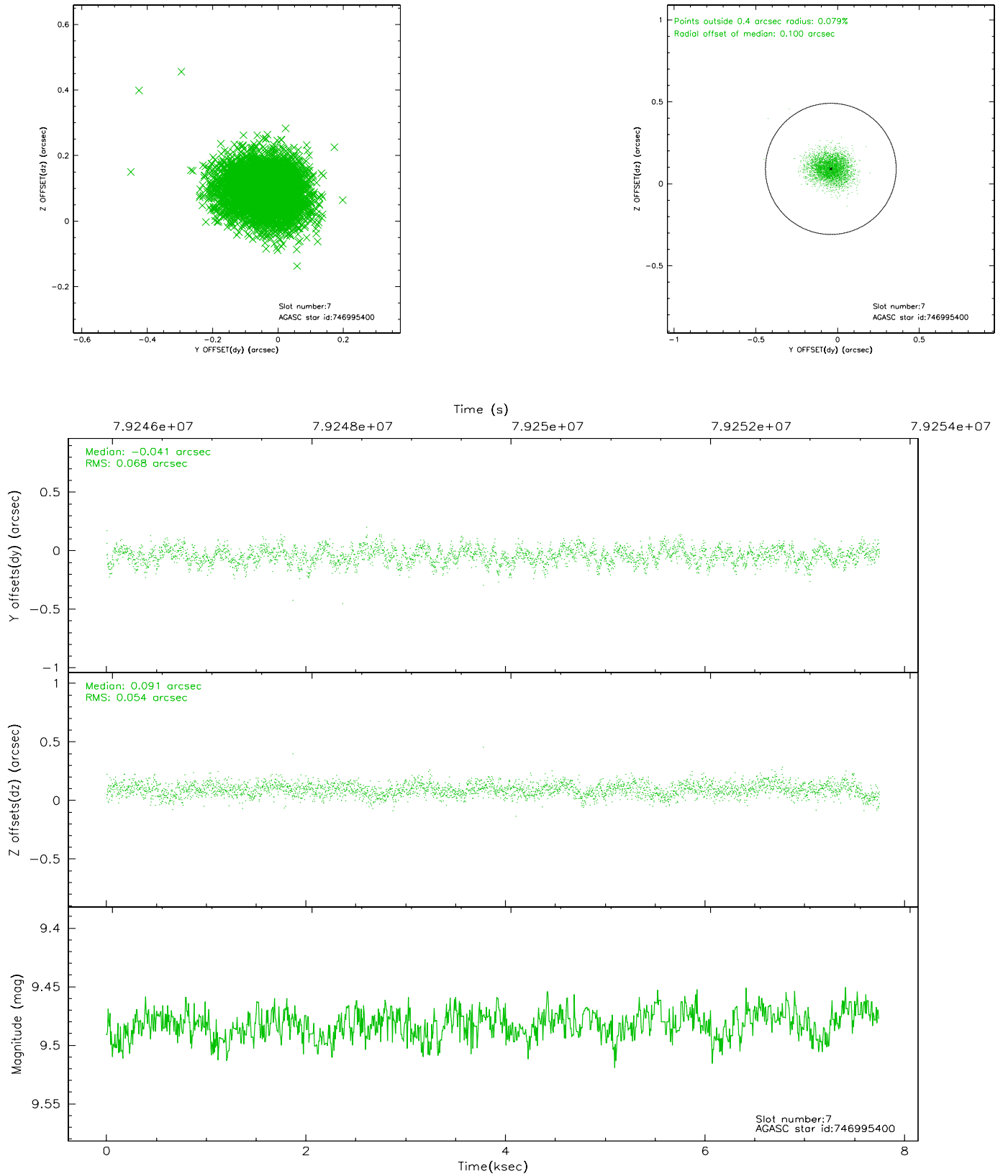
2.4.3 Slot 5



2.4.4 Slot 6

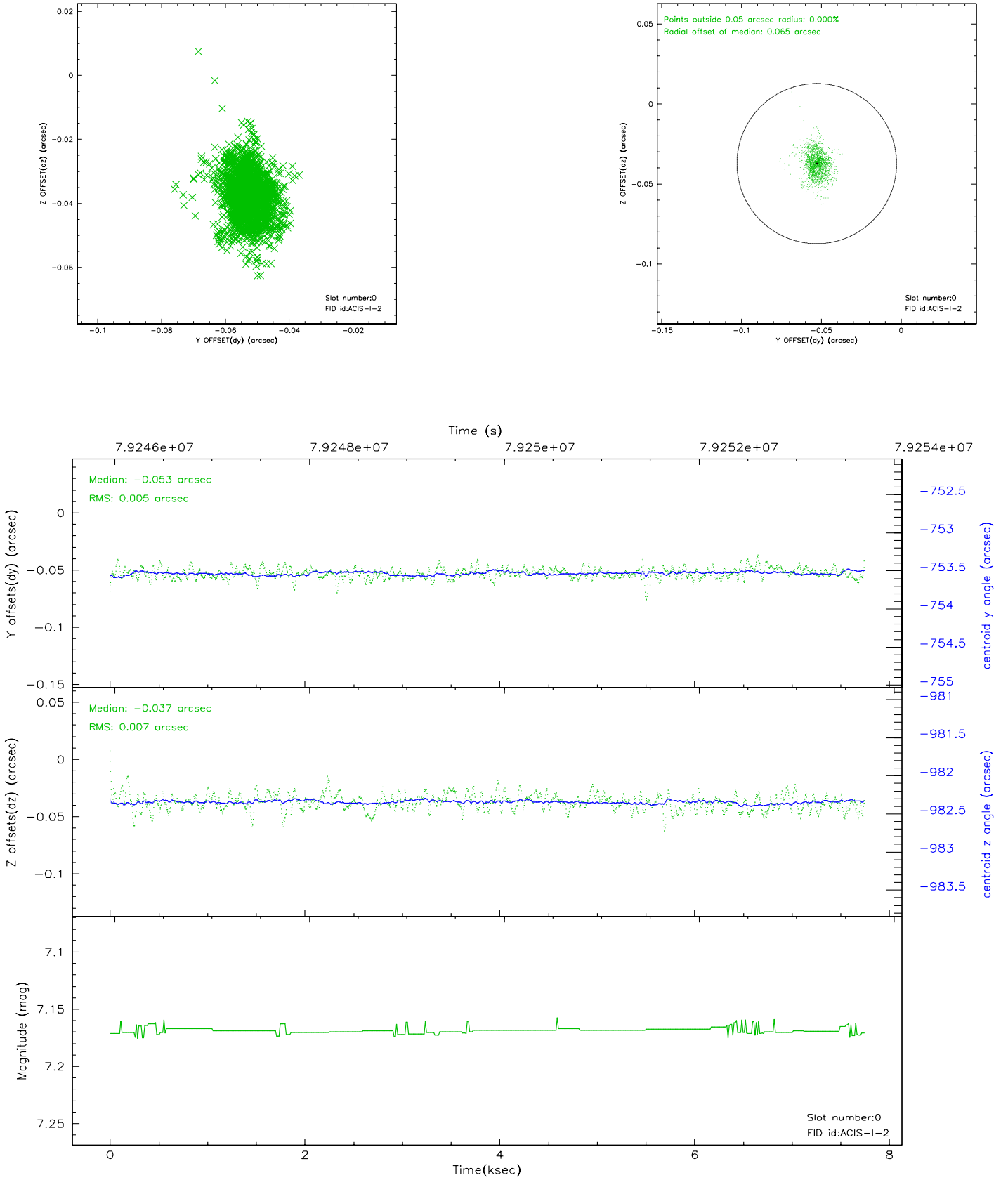


2.4.5 Slot 7

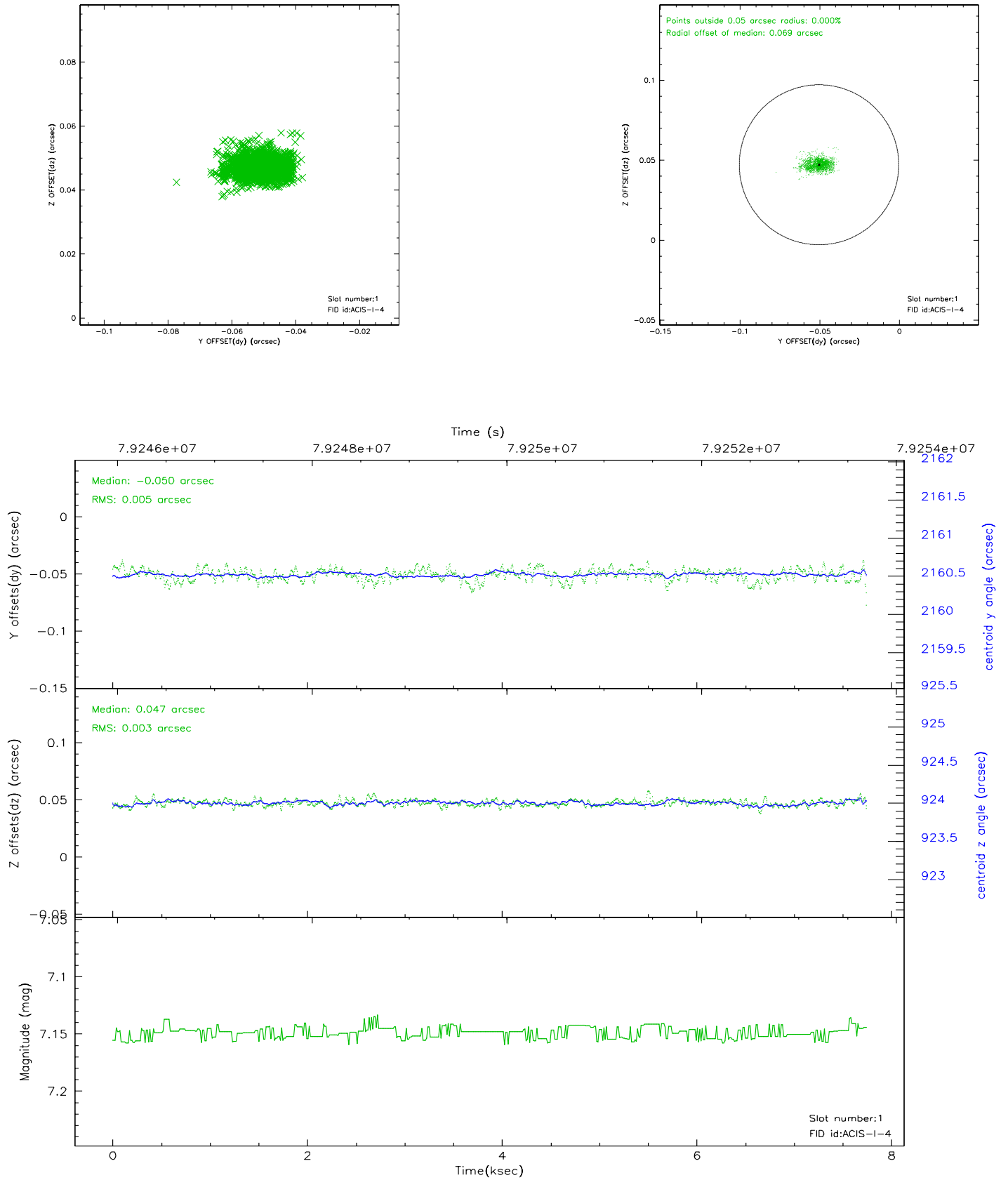


2.5 FID Slots

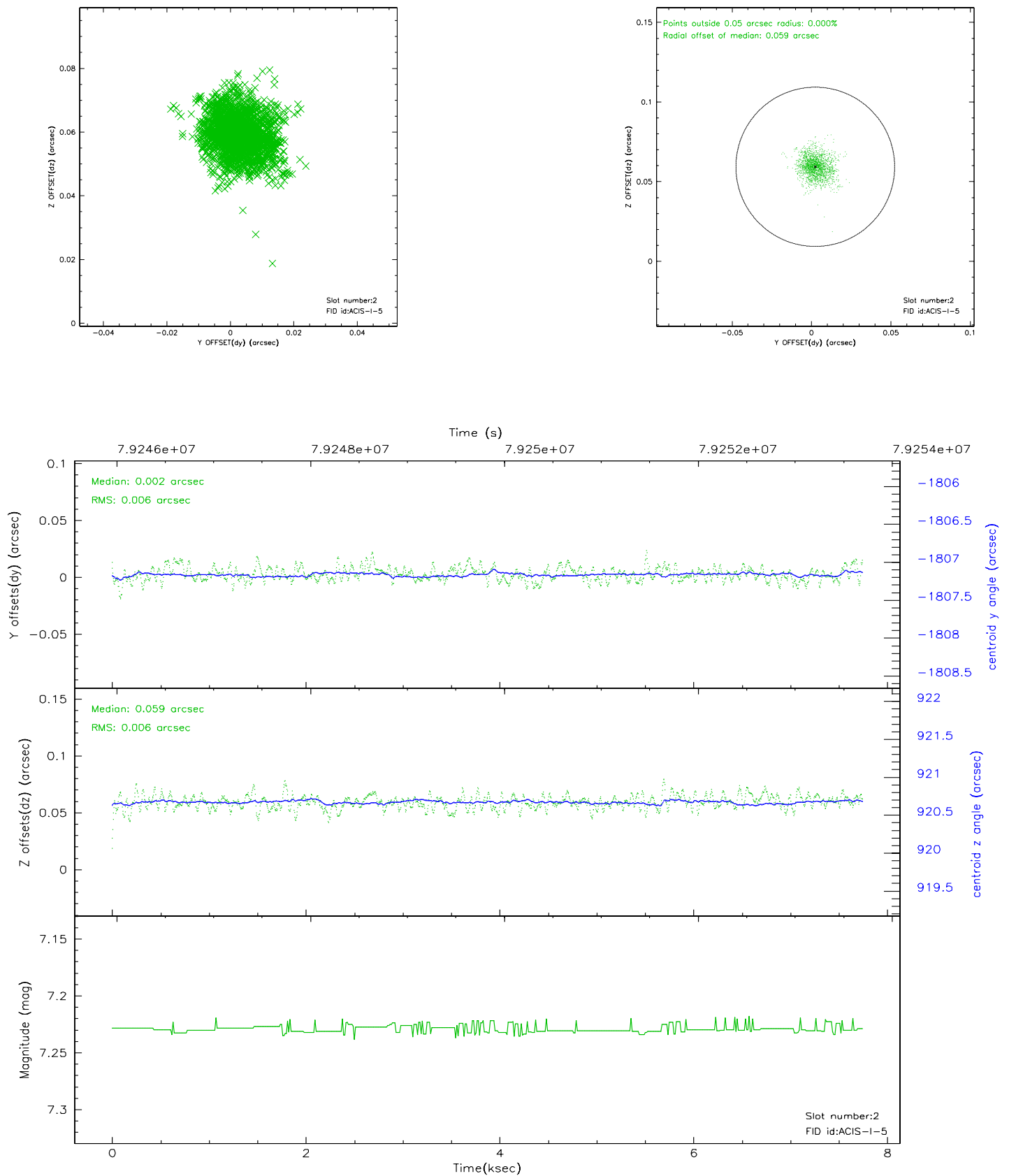
2.5.1 Slot 0



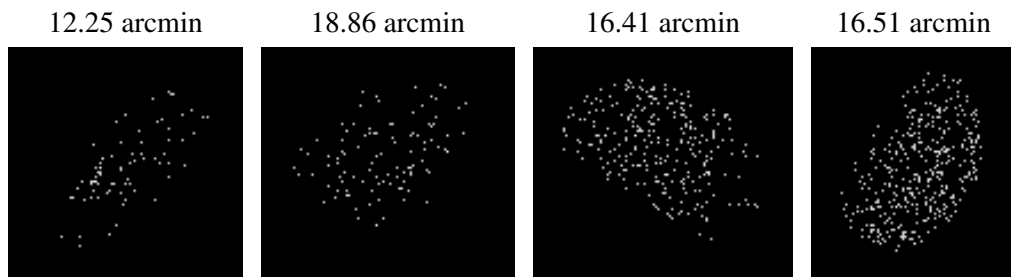
2.5.2 Slot 1



2.5.3 Slot 2



3 Point Sources



A Summary

A.1 Status

V&V Scientist	Joy Nichols
V&V Date (YYYY-MM-DD)	2008.11.20
V&V Edition	1
V&V Disposition and Status	OK
V&V Charge Time	7.324

A.2 Comments

Charge time for this ObsId remains at original value of 7.324 ks, although with the current processing the charge time would have been 7.318 ksec.=====

This calibration observation was acquired with the focal plane temperature raised from -120C to -110C, for attempted recalibration of ACIS for the 1999-09-16 through 2000-01-28 period.
=====

This reprocessing of the data applies no CTI correction because none is available for that temperature.
=====

Focal plane temperature is warmer than -118.7 C degrees during the entire observation. This temperature is the upper limit of the verified ACIS calibration for the front-illuminated chips. The focal plane temperature is warmer than -116.7 degrees C for approximately the entire observation. This temperature is the upper limit of the verified ACIS calibration for the back-illuminated chips. The ACIS spectral response calibration is less accurate at these warmer temperatures than it is at -119.7 C. Users whose science objectives depend on the most accurate spectral response (ie: fitting line-rich spectra) may notice an effect. Users whose science objectives do not depend on the most accurate spectral response should not notice an effect.