

# V&V Reference Report

## L2 ASCDS Version : 8.4.5

Observation 1588 - L2 Version 3  
Chandra X-Ray Center

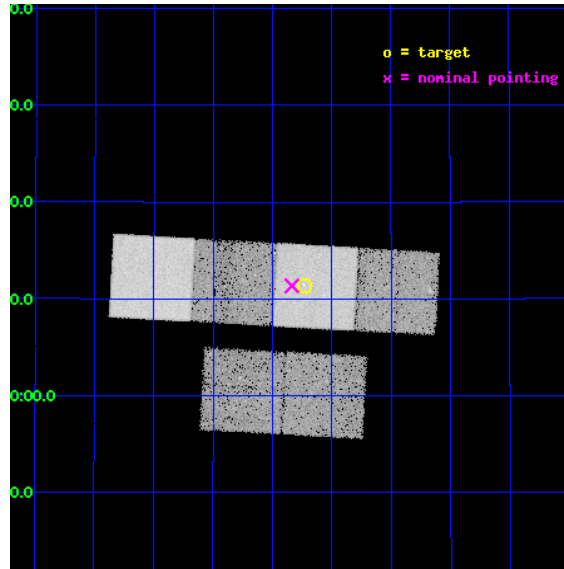
L2 Processing Date : Sep 3 2012

## Contents

<b>1</b>	<b>Front</b>	<b>2</b>
<b>2</b>	<b>OBI</b>	<b>3</b>
2.1	OBI . . . . .	3
2.1.1	Images . . . . .	3
2.1.2	Bias . . . . .	3
2.1.3	Parameters . . . . .	4
2.1.4	Events . . . . .	4
2.2	Compared Parameters . . . . .	5
2.3	Aspect . . . . .	6
2.4	Star Slots . . . . .	9
2.4.1	Slot 3 . . . . .	9
2.4.2	Slot 4 . . . . .	10
2.4.3	Slot 5 . . . . .	11
2.4.4	Slot 6 . . . . .	12
2.4.5	Slot 7 . . . . .	13
2.5	FID Slots . . . . .	14
2.5.1	Slot 0 . . . . .	14
2.5.2	Slot 1 . . . . .	15
2.5.3	Slot 2 . . . . .	16
<b>A</b>	<b>Summary</b>	<b>17</b>
A.1	Status . . . . .	17
A.2	Comments . . . . .	17

# 1 Front

seq_num	700204	Sequence number
obs_id	1588	Observation id
title	A CLUSTER AROUND 3C294	Proposal title
observer	Professor Andrew Fabian	Principal investigator
object	3C294	Source name
dtcycle	0	&#160
cycle	P	events from which exps? Prim/Second/Both
ra_targ	211.68375	Observer's specified target RA [deg]
dec_targ	34.19	Observer's specified target Dec [deg]
ra_nom	211.70910707729	Nominal RA [deg]
dec_nom	34.189343766084	Nominal Dec [deg]
roll_nom	3.1372613839238	Nominal Roll [deg]
revision	3	Processing version of data
ontime	19758.546813771	Sum of GTIs [s]
livetime	19508.352196847	Livetime [s]
ontime2	19758.587853774	Sum of GTIs [s]
ontime3	19758.423693776	Sum of GTIs [s]
ontime5	19758.505773768	Sum of GTIs [s]
ontime6	19758.464733779	Sum of GTIs [s]
ontime7	19758.546813771	Sum of GTIs [s]
ontime8	19755.141723454	Sum of GTIs [s]
l2events	182696	Number of level 2 events

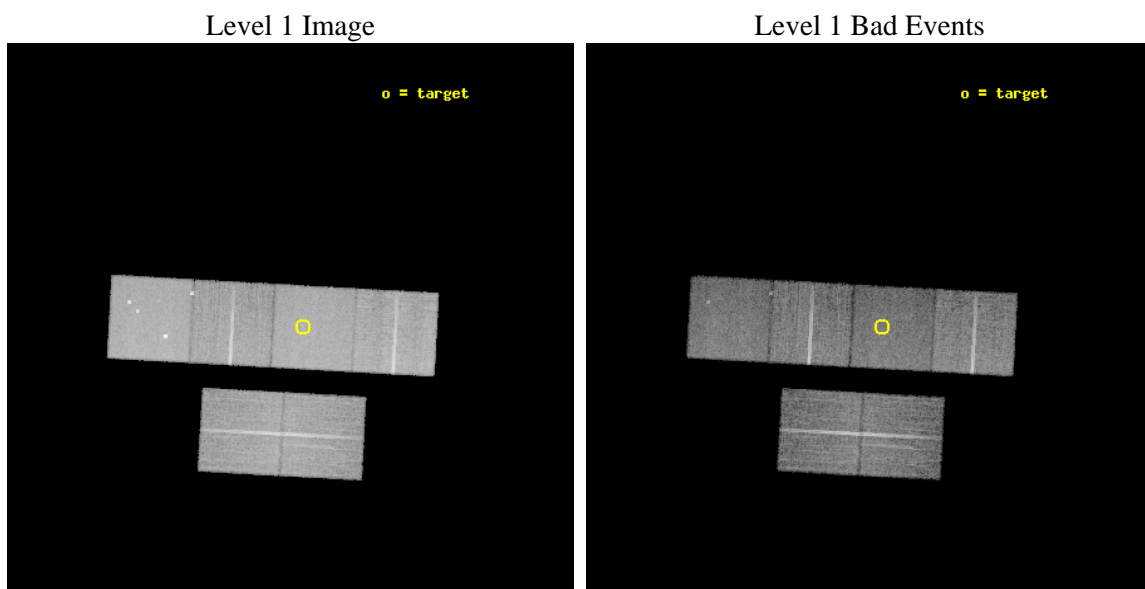




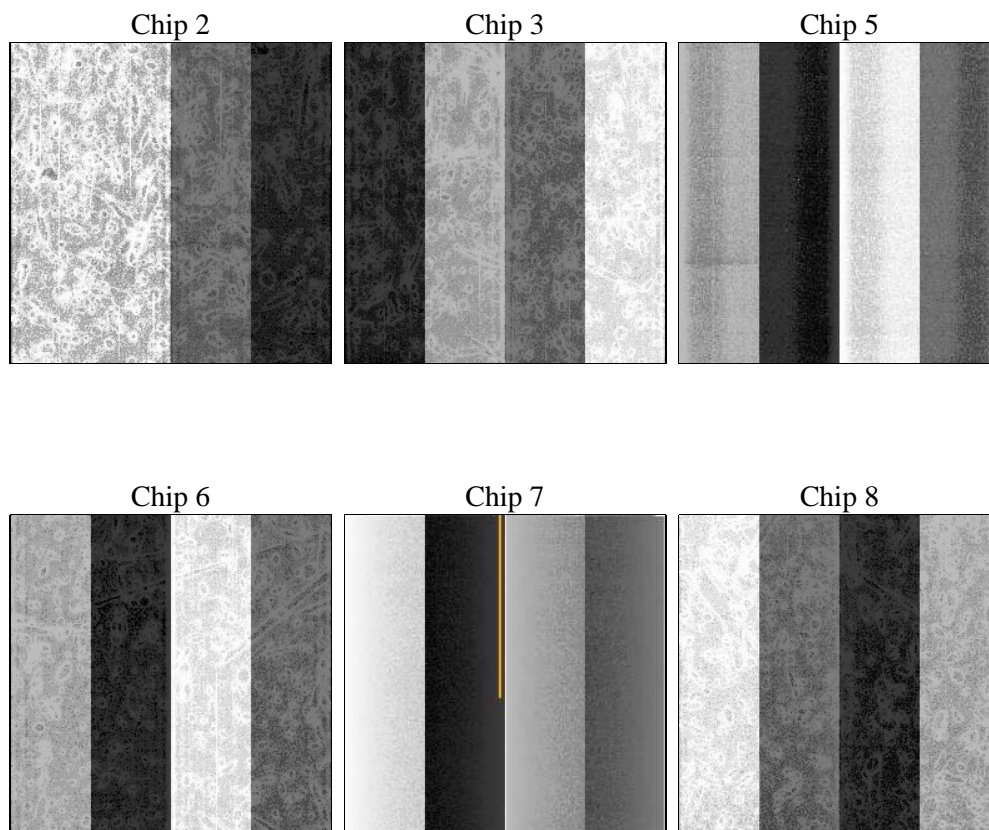
## 2 OBI

### 2.1 OBI

#### 2.1.1 Images



#### 2.1.2 Bias



### 2.1.3 Parameters

obi_num	0	Obi number	sched_exp_time	20000.000000	[s] Scheduled observation exposure time
ascdsver	8.4.5	Processing system revision	ontime	19758.546813771	Sum of GTIs [s]
caldsver	4.5.1.1	&#160	ontime2	19758.587853774	Sum of GTIs [s]
date	2012-09-03T00:36:59	Date and time of file creation	ontime3	19758.423693776	Sum of GTIs [s]
revision	3	Processing version of data	ontime5	19758.505773768	Sum of GTIs [s]
			ontime6	19758.464733779	Sum of GTIs [s]
			ontime7	19758.546813771	Sum of GTIs [s]
			ontime8	19755.141723454	Sum of GTIs [s]
			l1events	815118	Number of level 1 events

### 2.1.4 Events

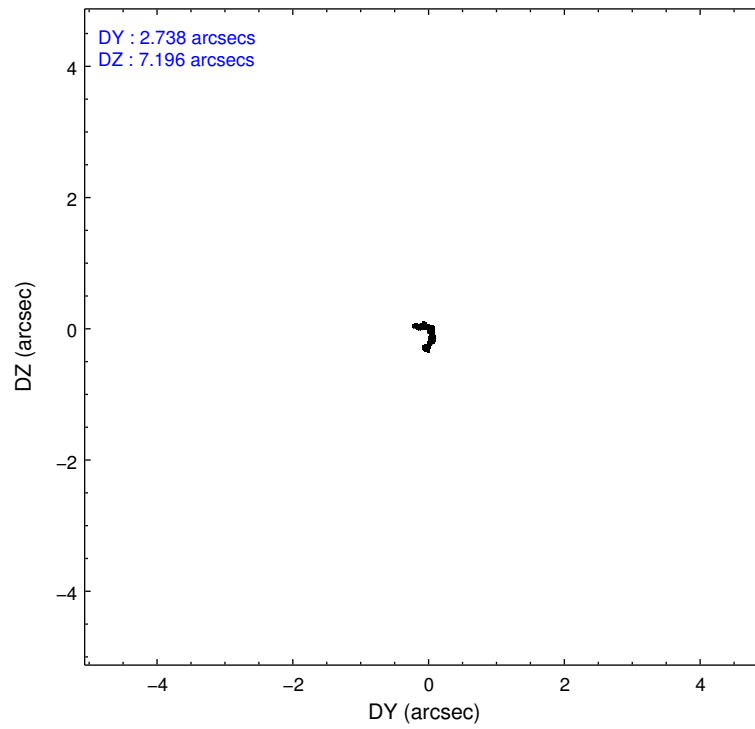
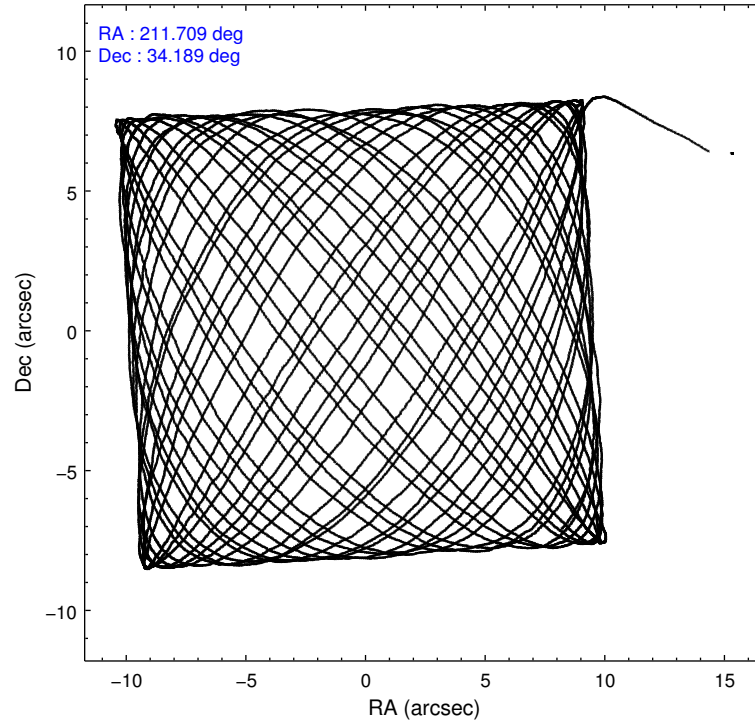
	ccd 2	ccd 3	ccd 5	ccd 6	ccd 7	ccd 8		ccd 2	ccd 3	ccd 5	ccd 6	ccd 7	ccd 8
level 1 events	118749	115104	163106	120612	144777	152770	grade 0 events	6823	6594	10177	6758	6113	11861
rejected events	103666	100458	86094	105126	83761	118924		5%	5%	6%	5%	4%	7%
rejected %	87%	87%	52%	87%	57%	77%	grade 1 events	52	52	328	66	130	93
								0%	0%	0%	0%	0%	0%
							grade 2 events	3311	3128	22323	3271	11873	6953
								2%	2%	13%	2%	8%	4%
							grade 3 events	1250	1230	3700	1358	5499	3690
								1%	1%	2%	1%	3%	2%
							grade 4 events	1216	1216	3042	1380	5546	3468
								1%	1%	1%	1%	3%	2%
							grade 5 events	3843	4206	11991	4681	13796	5745
								3%	3%	7%	3%	9%	3%
							grade 6 events	2484	2483	37804	2722	31999	7877
								2%	2%	23%	2%	22%	5%
							grade 7 events	99770	96195	73741	100376	69821	113083
								84%	83%	45%	83%	48%	74%

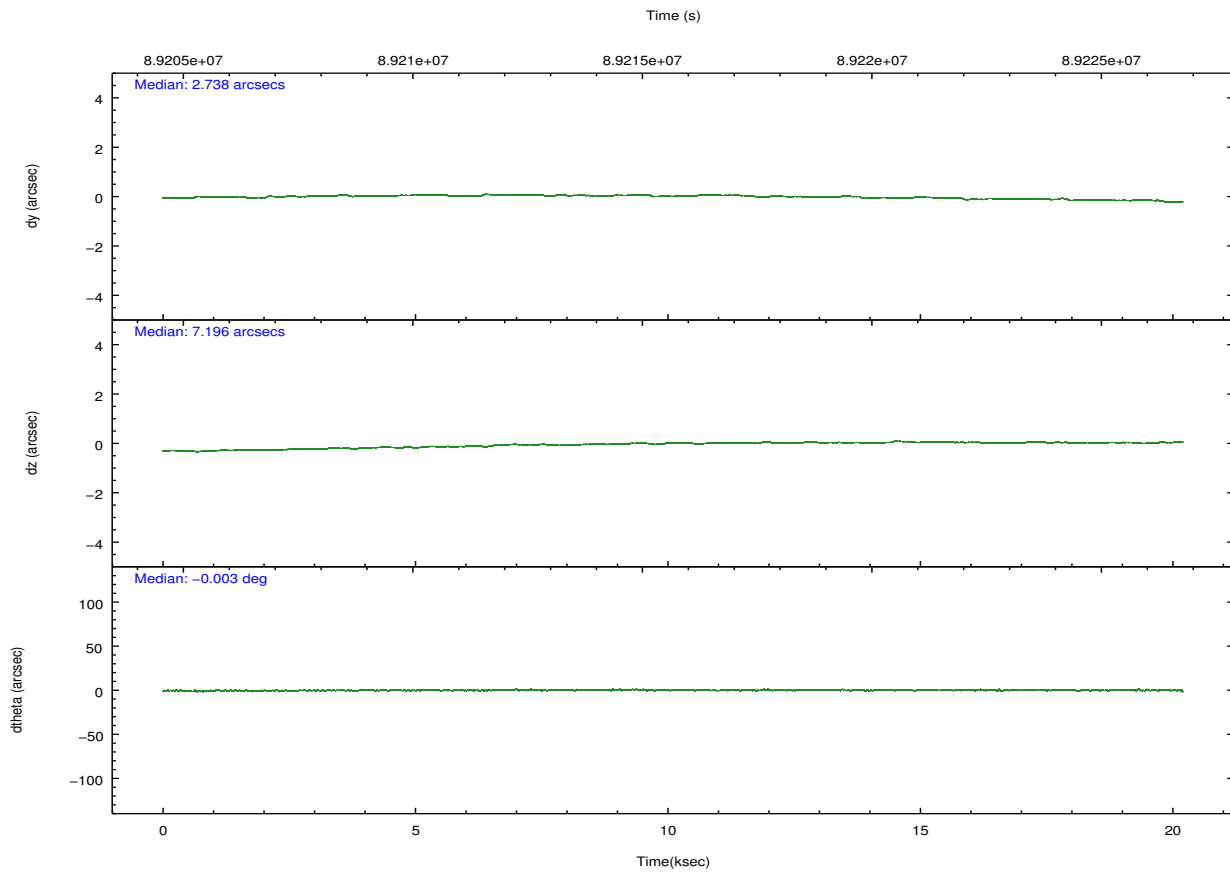
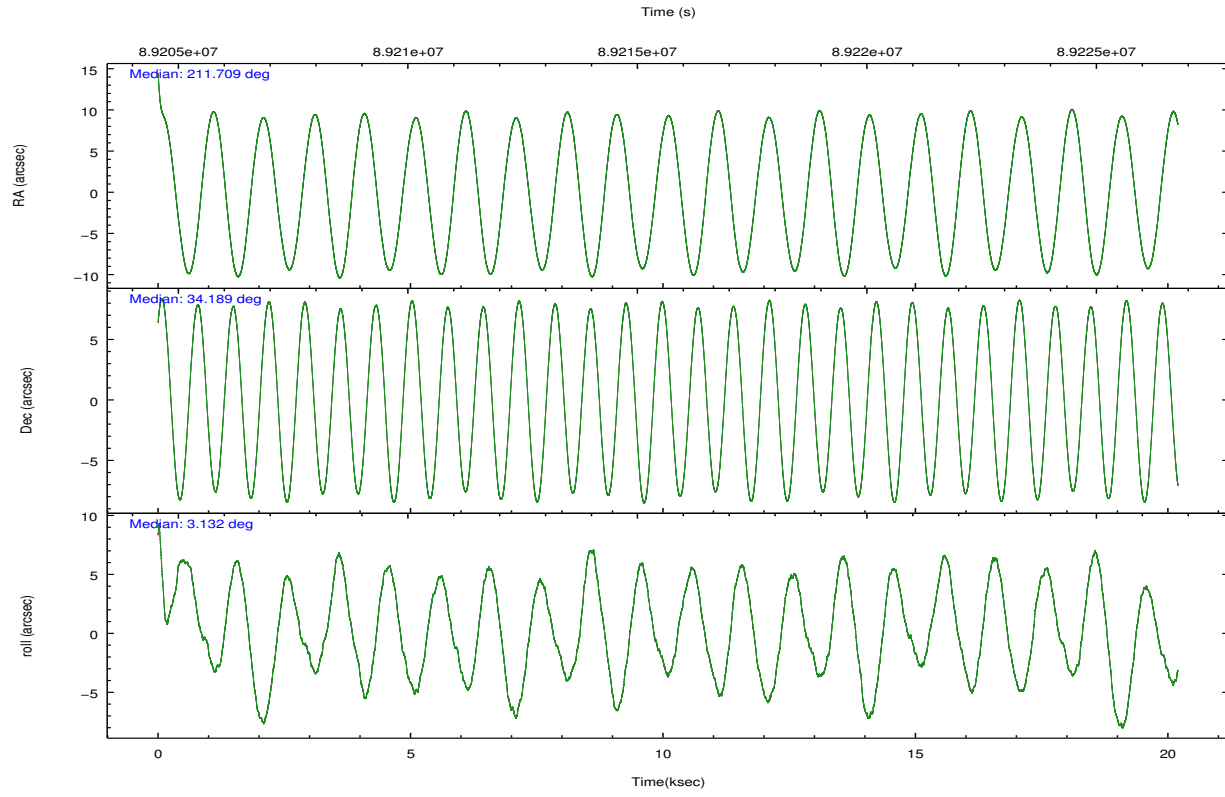
## 2.2 Compared Parameters

Parameter	Planned	Actual
Instrument	ACIS	ACIS
Detector	ACIS-235678	ACIS-235678
Grating	NONE	NONE
Data mode	FAINT	FAINT
Observation mode	POINTING	POINTING
[deg] Pointing RA	211.681525	211.7091070772929
[deg] Pointing Dec	34.174222	34.18934376608421
[deg] Pointing Roll	2.996136	3.137261383923789
[mm] SIM focus pos	-0.684267	-0.6828225247311905
[mm] SIM defocus	0	0.001444936568705701
[mm] SIM translation stage pos	-190.132523	-190.1400660498719
[mm] SIM translation stage offset	0	0.00754346686406393
[s] Observation start time (MET)	89205768.184000	89205079.129474
Observation start date	2000-10-29T11:21:44	2000-10-29T11:11:19
[s] Observation end time (MET)	89225768.184000	89226284.330275
Observation end date	2000-10-29T16:55:04	2000-10-29T17:04:44
Read mode	TIMED	TIMED

Parameter	Planned	Actual
Obspar format version number	7	7
Obspar file type	PREDICTED	ACTUAL
Obspar update status	NONE	UPDATED
Number of optional ACIS chips dropped	0	0
On-chip summing requested	N	N
Subarray requested	NONE	NONE
Alternating exposures requested	N	N
[s] Primary exposure time	0.000000	3.2

## 2.3 Aspect



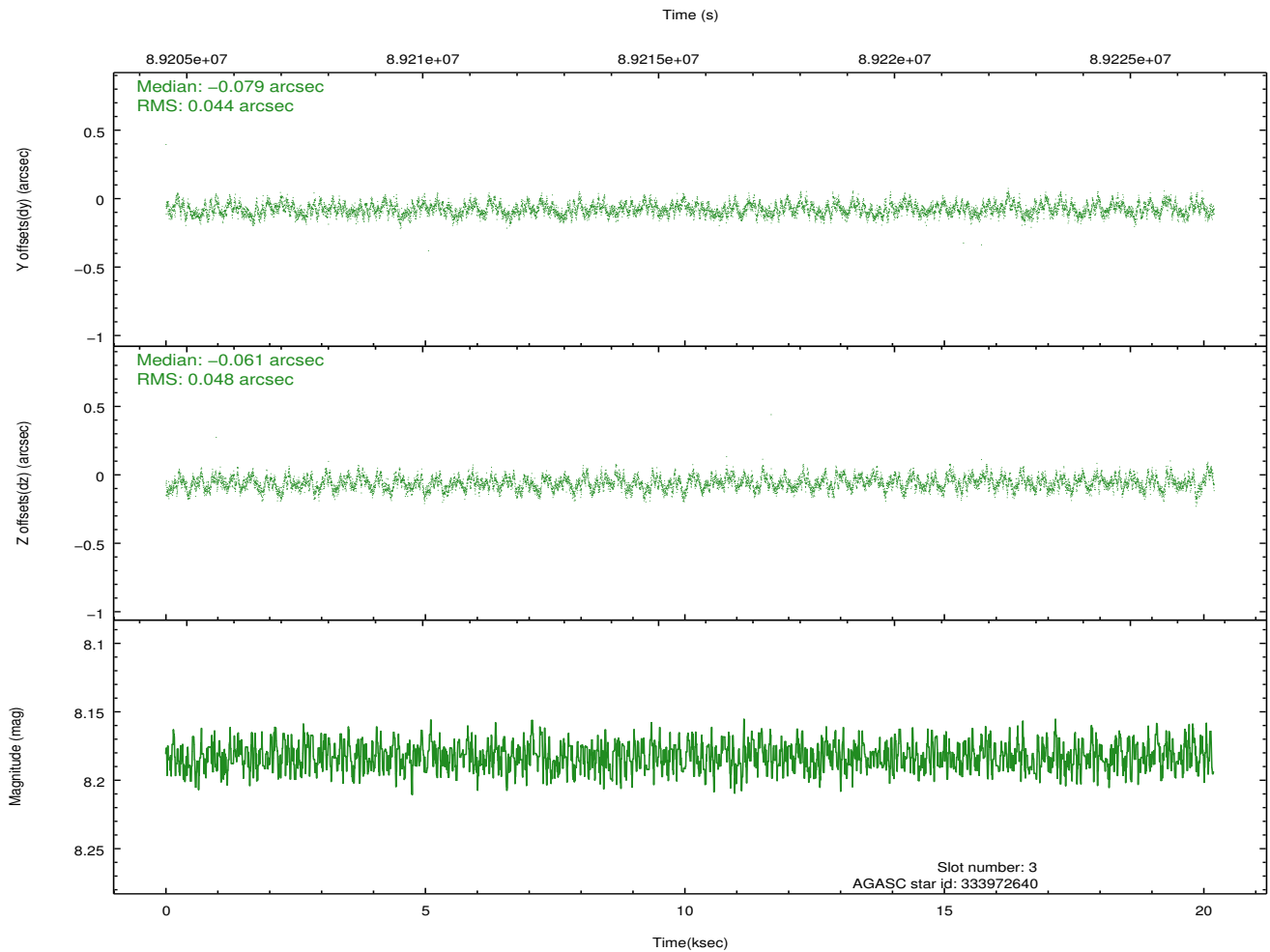
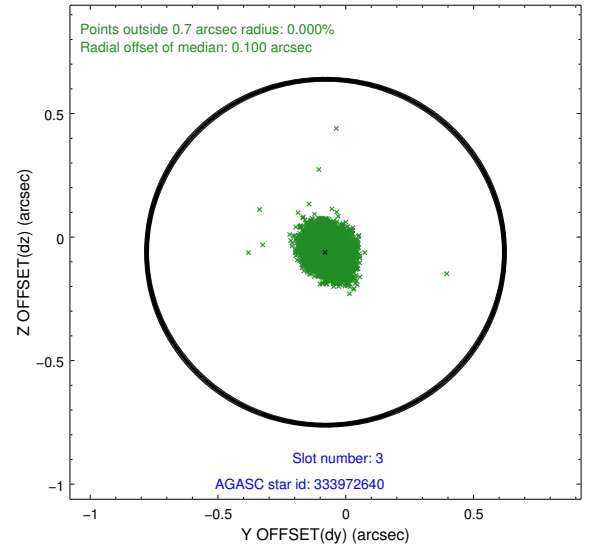
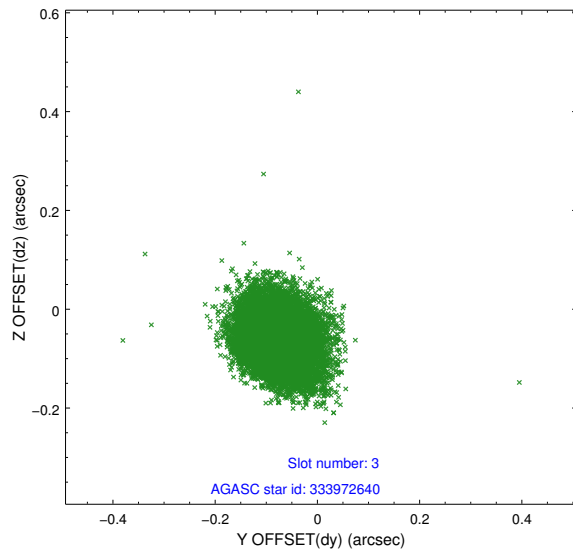


Slot Statistics

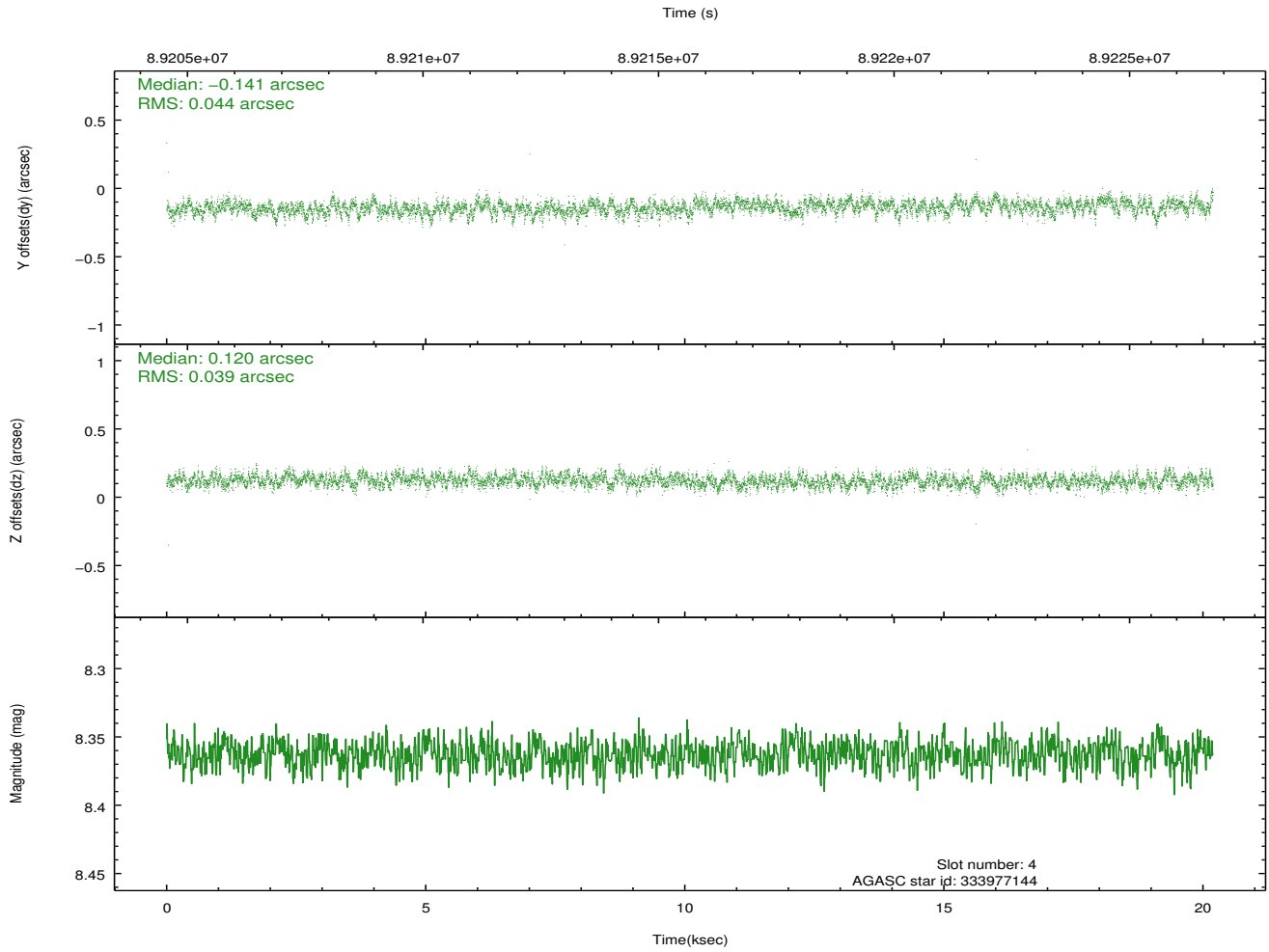
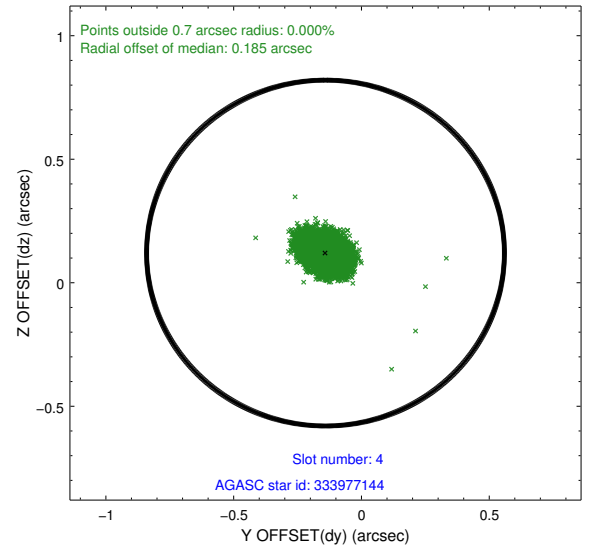
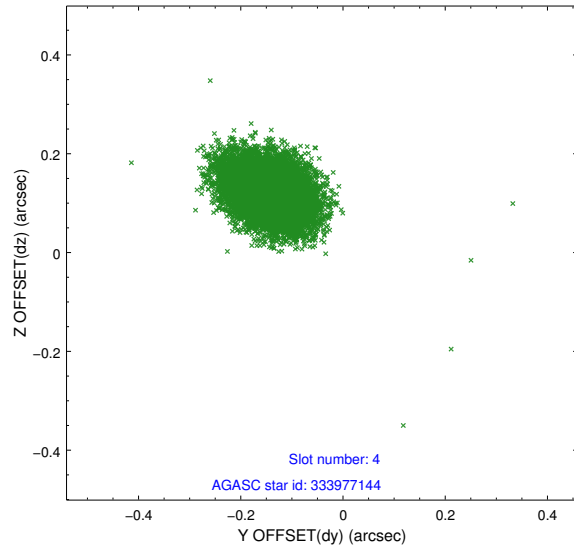
slot	status	id	mag	n_pts	med_dy	med_dz	dr1	dr2	ra	dec	mean_y	mean_z
0	FID	ACIS-S-2	7.11	4927	-0.011	0.000	0.013	0.018	0.000000	0.000000	-755.38	-1728.29
1	FID	ACIS-S-4	7.20	4926	-0.034	0.005	0.016	0.023	0.000000	0.000000	2157.81	179.98
2	FID	ACIS-S-5	7.23	4925	0.015	0.003	0.013	0.019	0.000000	0.000000	-1807.94	173.89
3	GUIDE	333972640	8.18	9851	-0.079	-0.061	0.069	0.110	211.483705	34.382666	-547.12	780.94
4	GUIDE	333977144	8.36	9849	-0.141	0.120	0.061	0.102	212.190837	33.799759	1451.90	-1421.33
5	GUIDE	333973208	8.40	9853	0.043	0.026	0.067	0.111	211.140123	34.422788	-1557.79	982.13
6	GUIDE	333972048	9.73	9828	0.019	0.012	0.110	0.192	212.095723	33.936855	1191.57	-914.85
7	GUIDE	333973608	10.02	9851	0.156	-0.089	0.137	0.221	210.967846	34.500661	-2051.83	1291.77

## 2.4 Star Slots

### 2.4.1 Slot 3

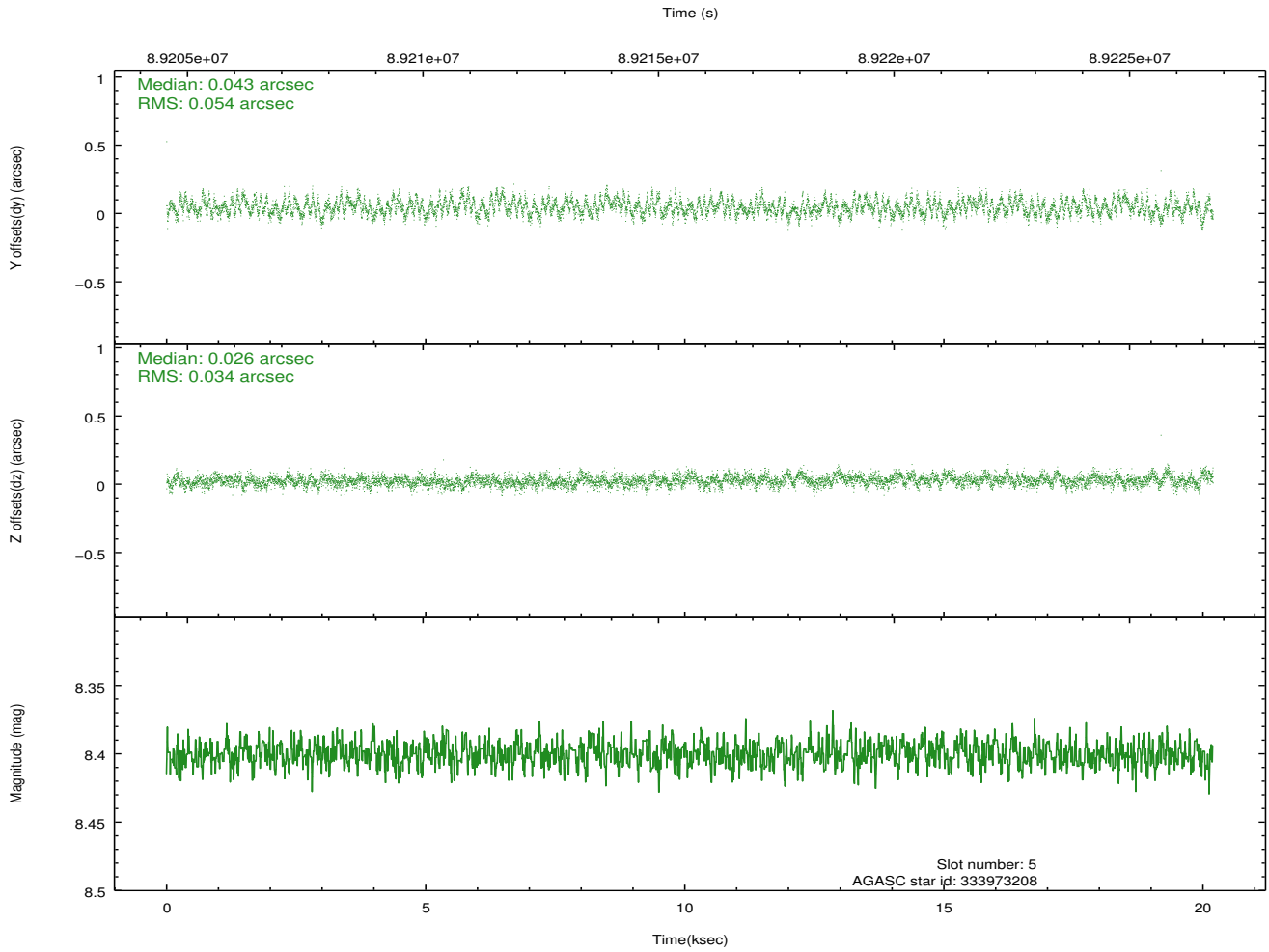
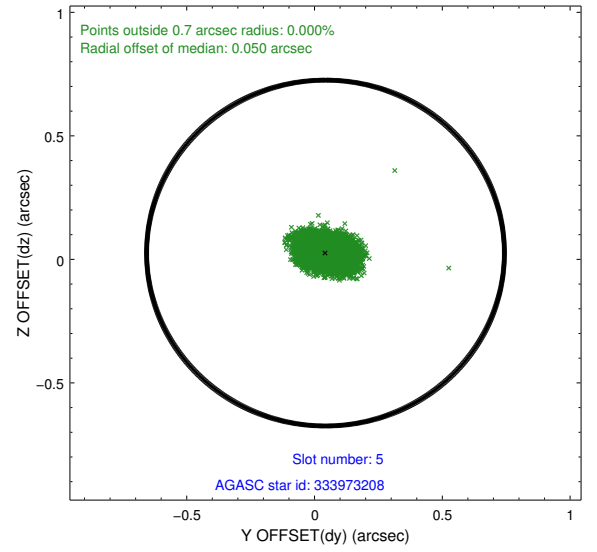
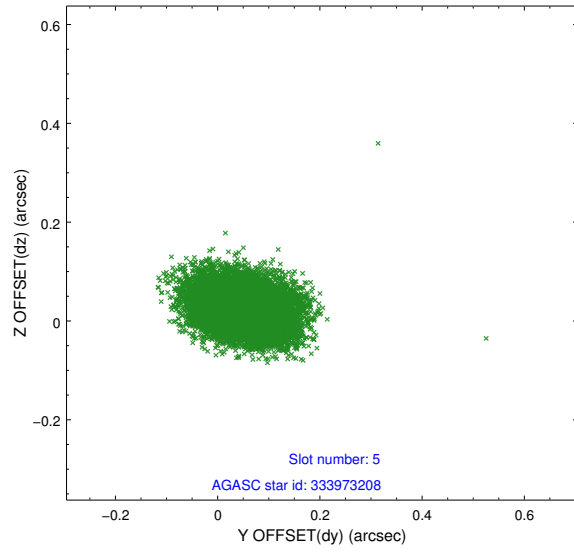


## 2.4.2 Slot 4

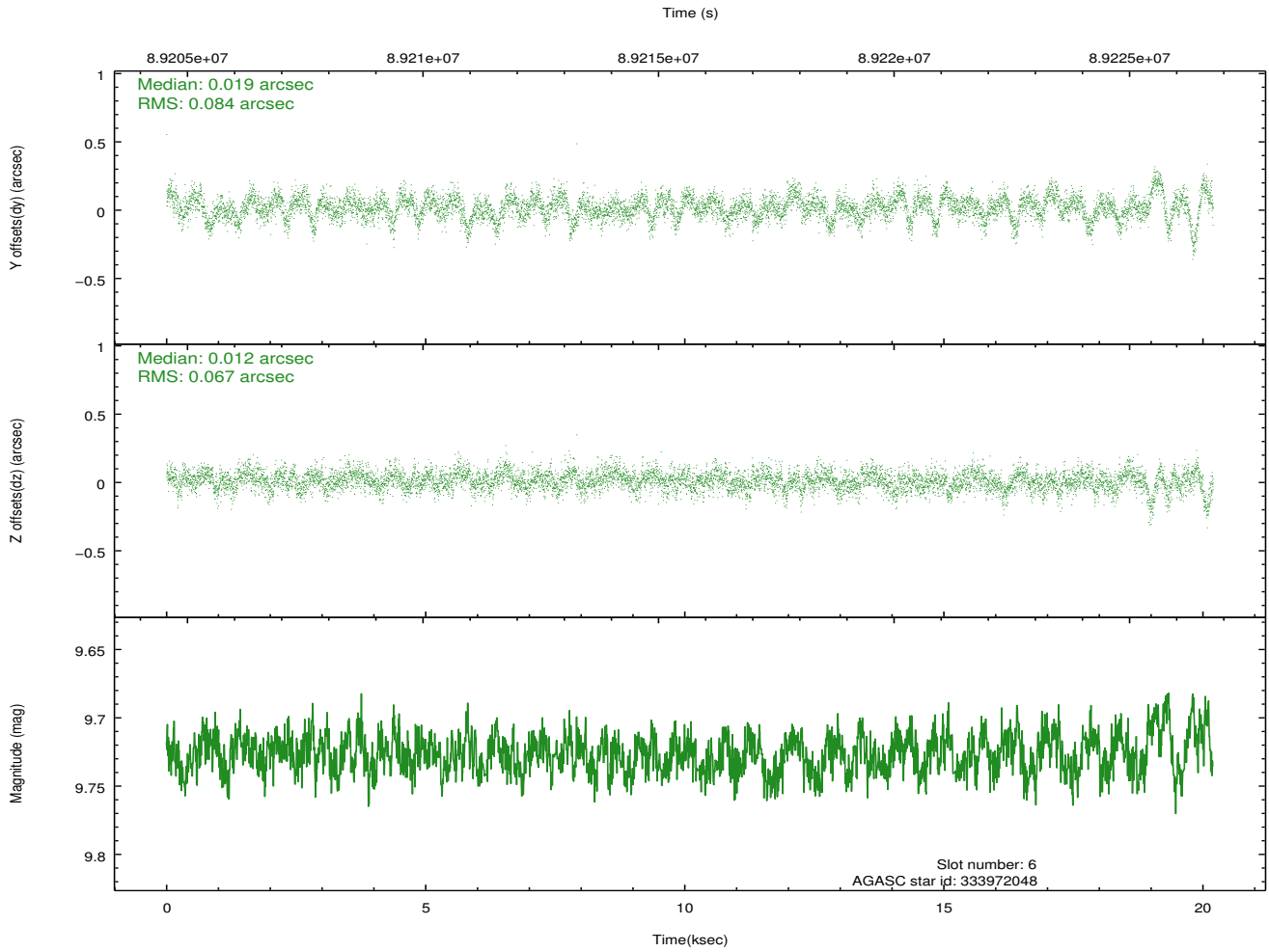
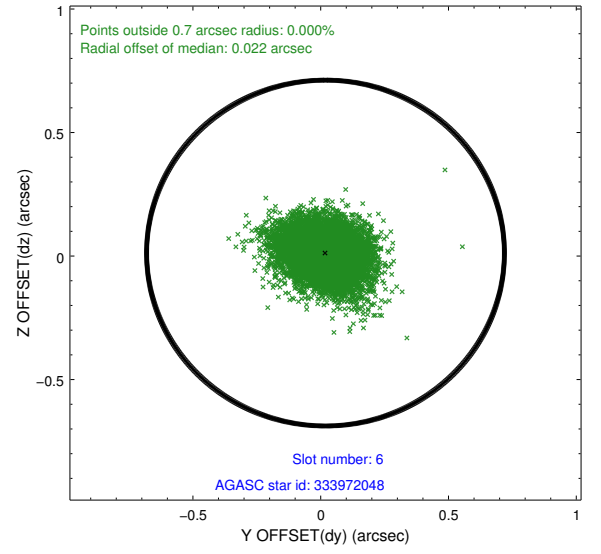
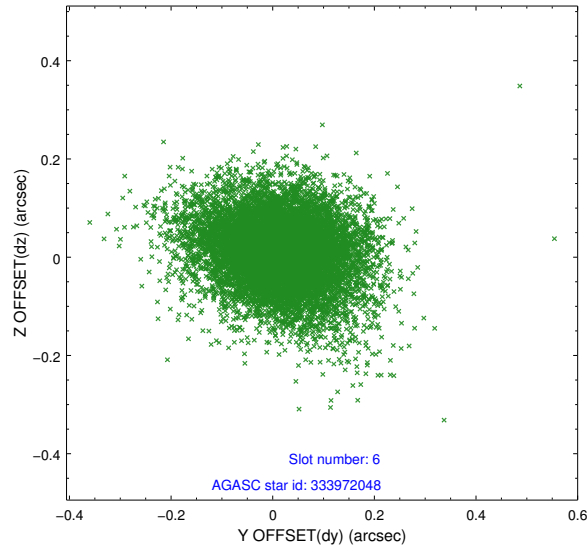




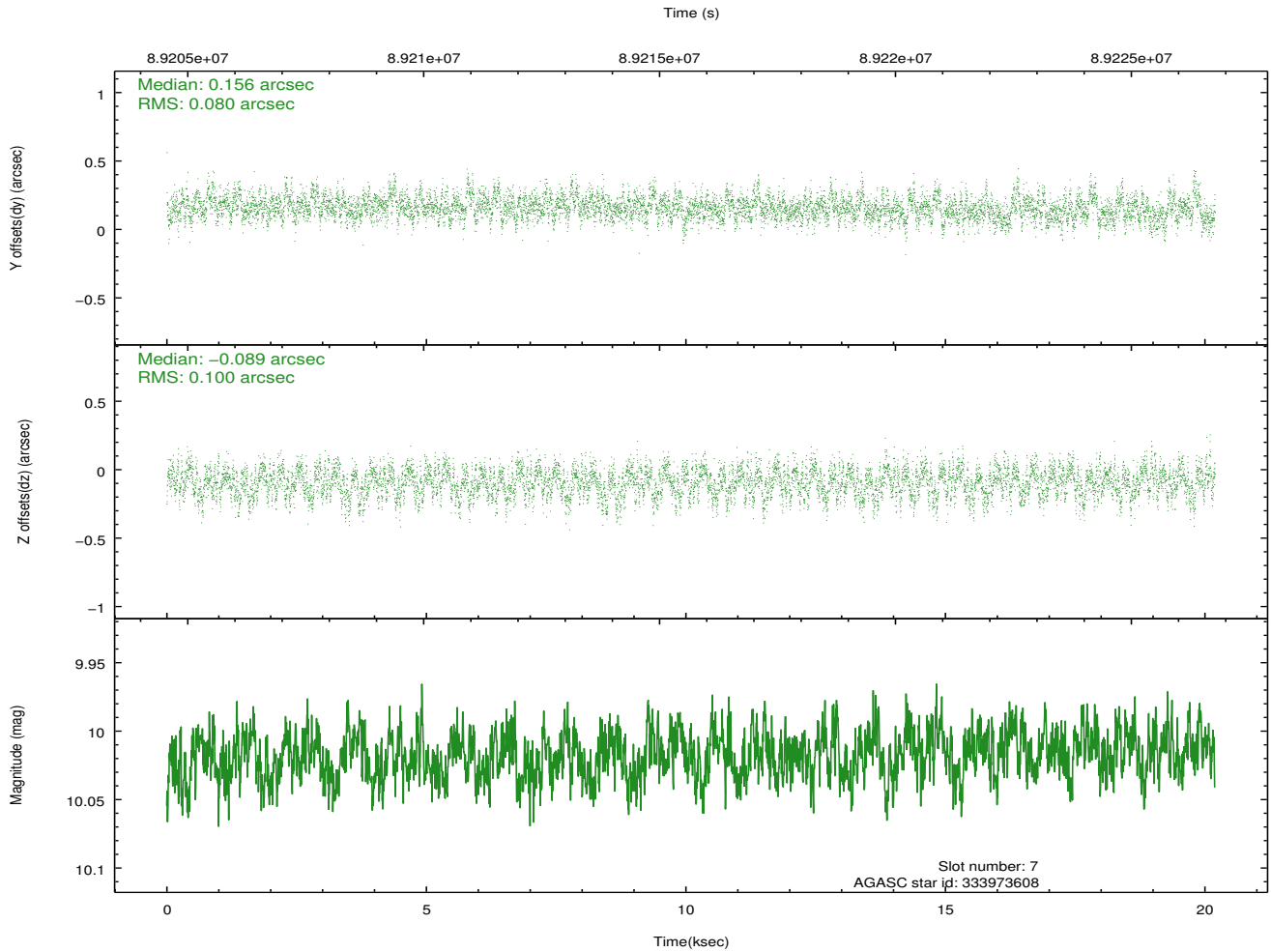
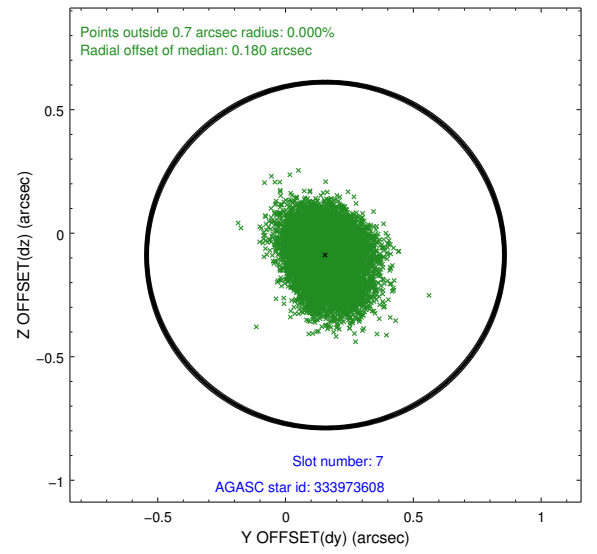
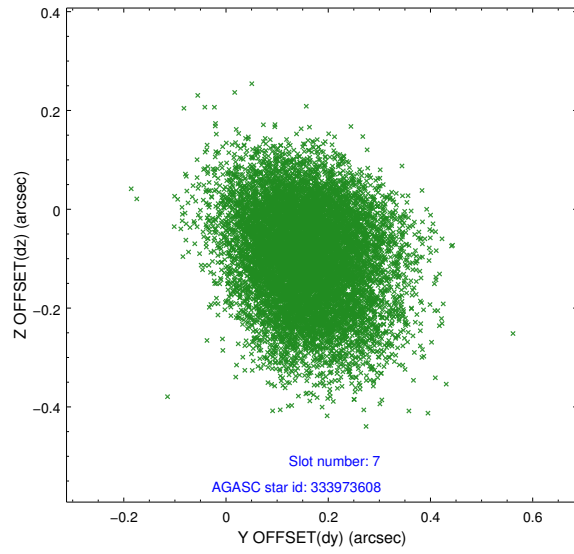
### 2.4.3 Slot 5



## 2.4.4 Slot 6

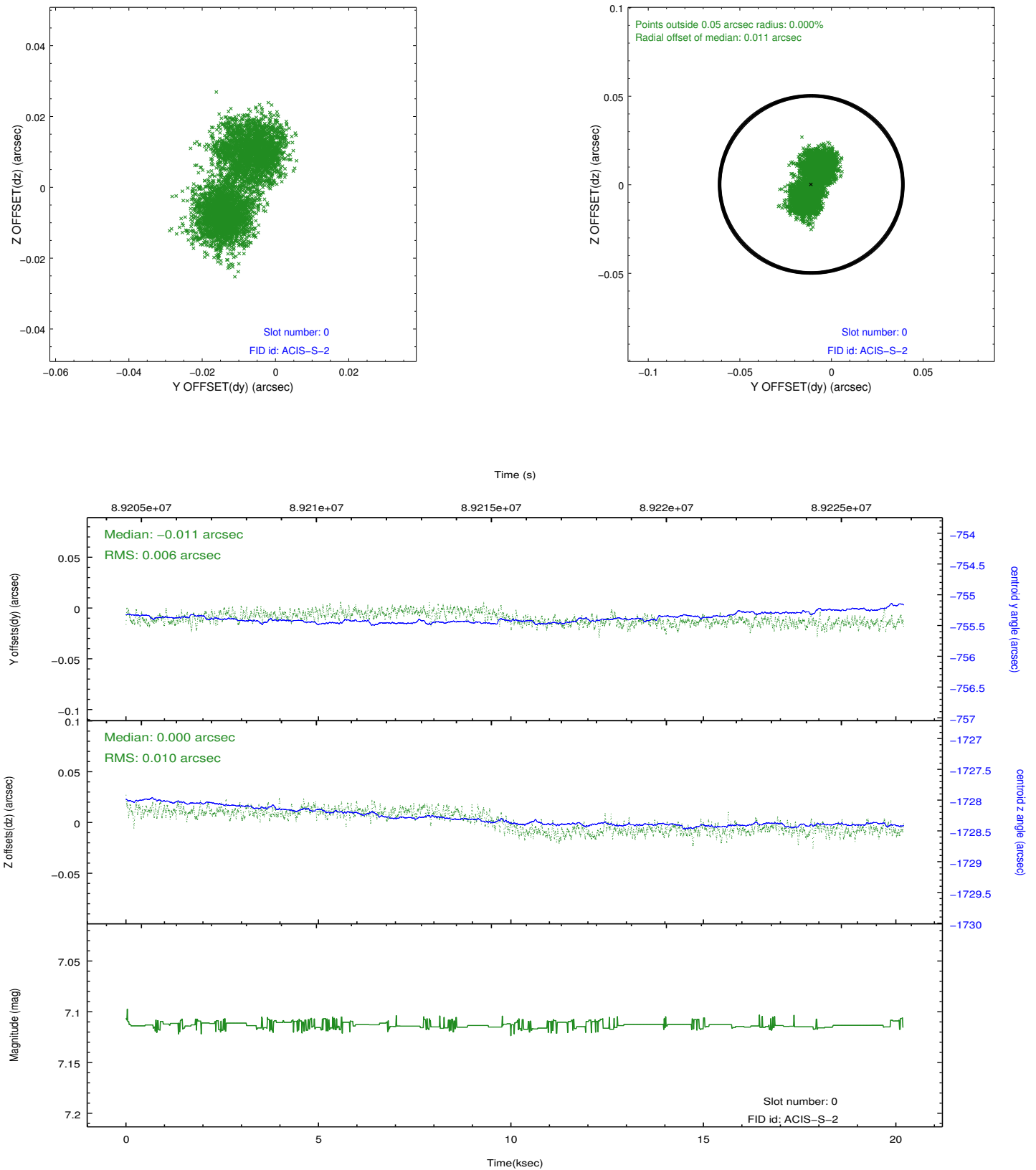


## 2.4.5 Slot 7

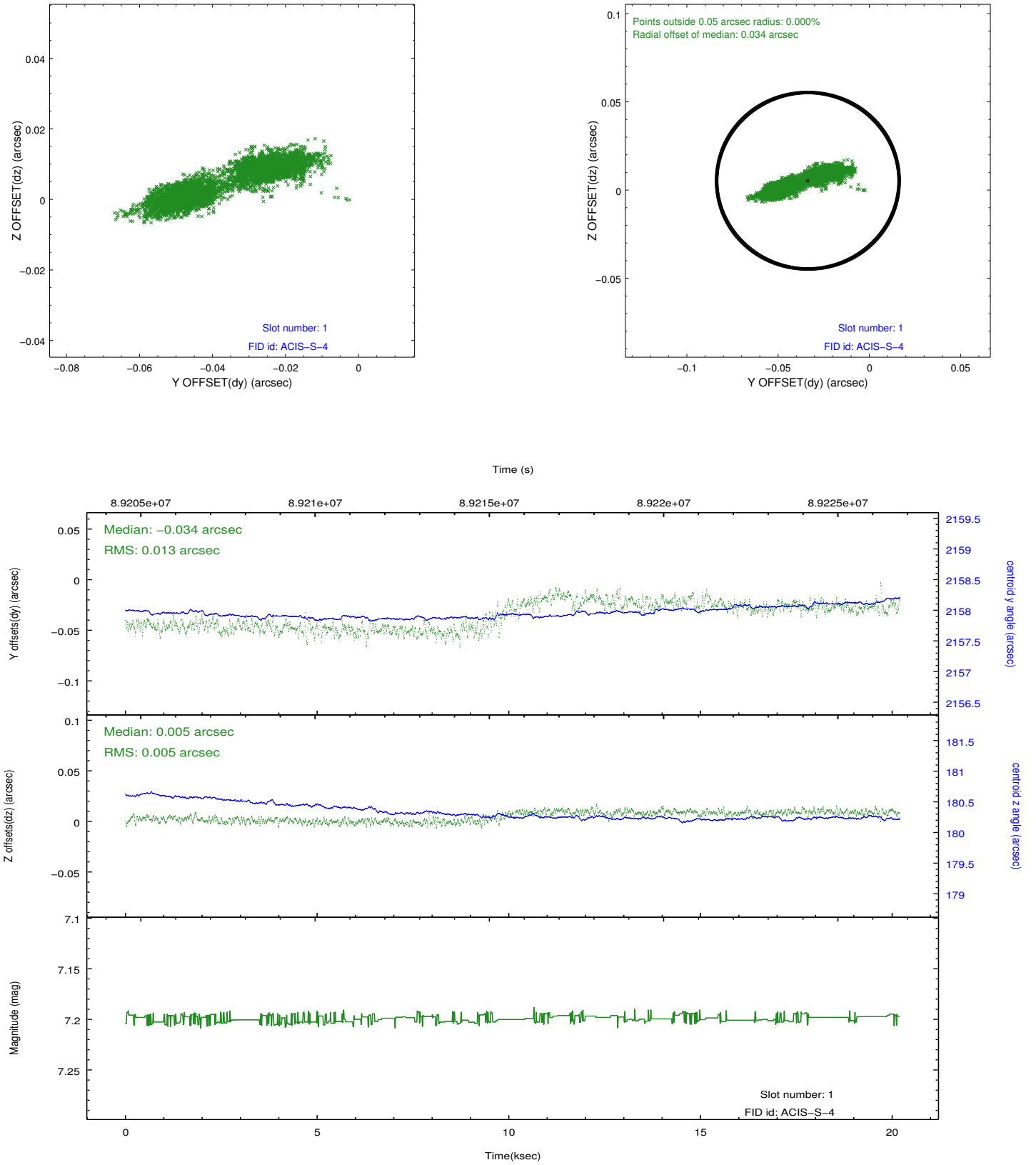


## 2.5 FID Slots

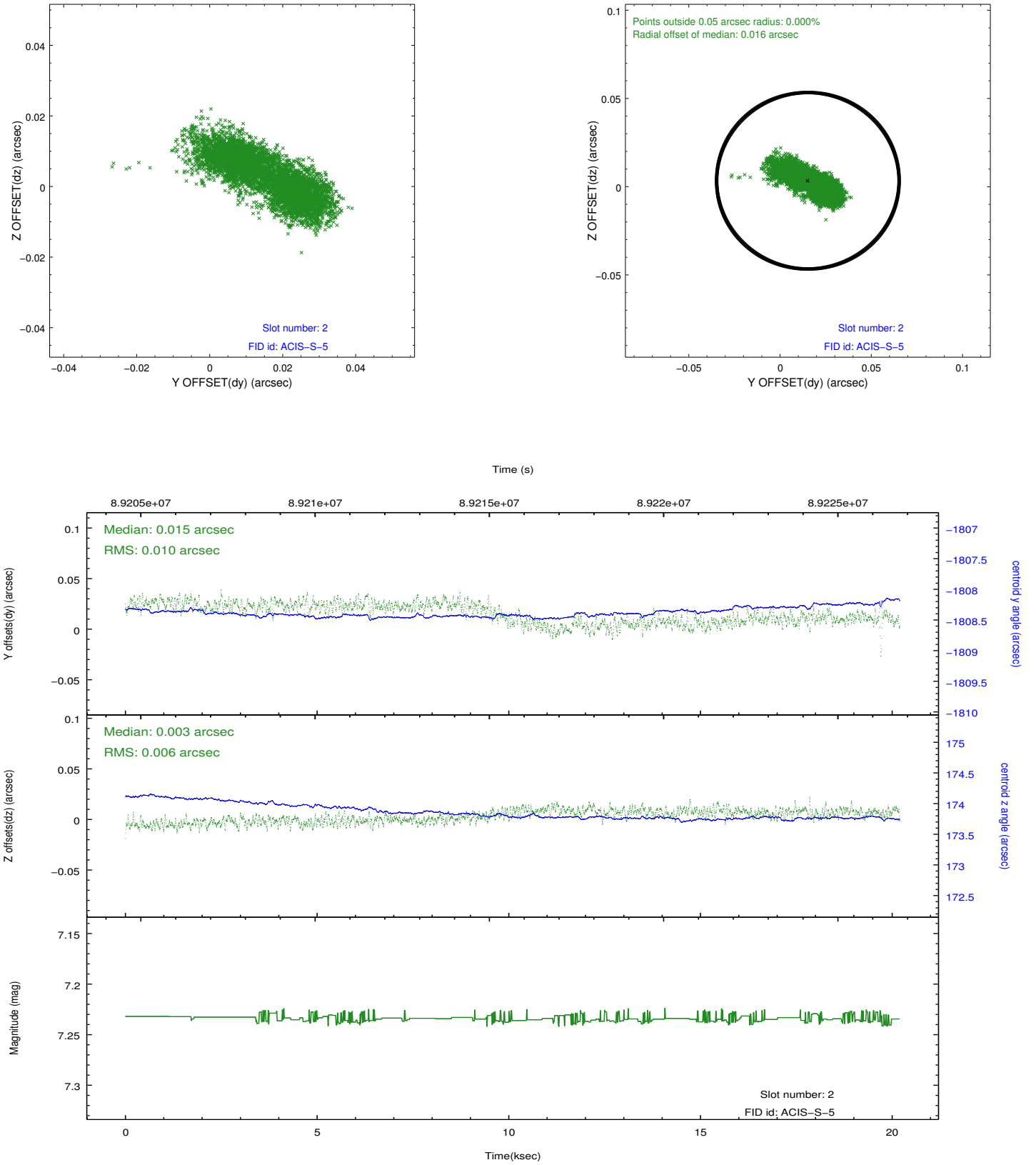
### 2.5.1 Slot 0



## 2.5.2 Slot 1



### 2.5.3 Slot 2



## **A Summary**

### **A.1 Status**

V&V Scientist	Jen Lauer
V&V Date (YYYY-MM-DD)	2012.09.10
V&V Edition	1
V&V Disposition and Status	OK
V&V Charge Time	19.76

### **A.2 Comments**