

V&V Reference Report

L2 ASCDS Version : 7.6.10

Observation 1588 - L2 Version 001
Chandra X-Ray Center

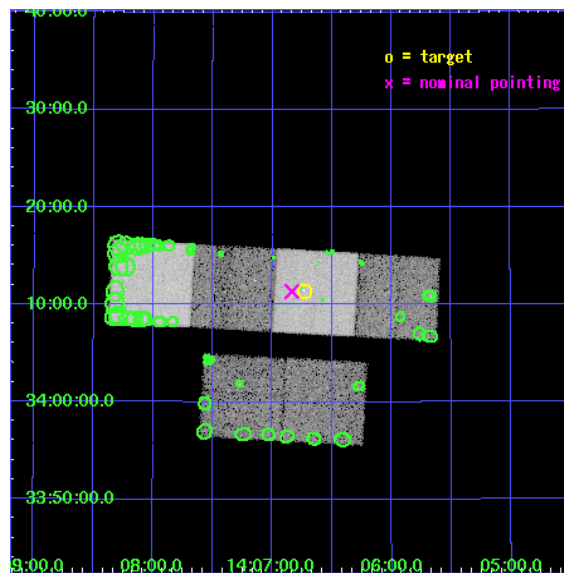
L2 Processing Date : Jun 14 2007

Contents

1	Front	2
2	OBI	3
2.1	OBI	3
2.1.1	Images	3
2.1.2	Bias	3
2.1.3	Parameters	4
2.1.4	Events	4
2.2	Compared Parameters	5
2.3	Aspect	6
2.4	Star Slots	9
2.4.1	Slot 3	9
2.4.2	Slot 4	10
2.4.3	Slot 5	11
2.4.4	Slot 6	12
2.4.5	Slot 7	13
2.5	FID Slots	14
2.5.1	Slot 0	14
2.5.2	Slot 1	15
2.5.3	Slot 2	16
3	Point Sources	17
A	Summary	18
A.1	Status	18
A.2	Comments	18

1 Front

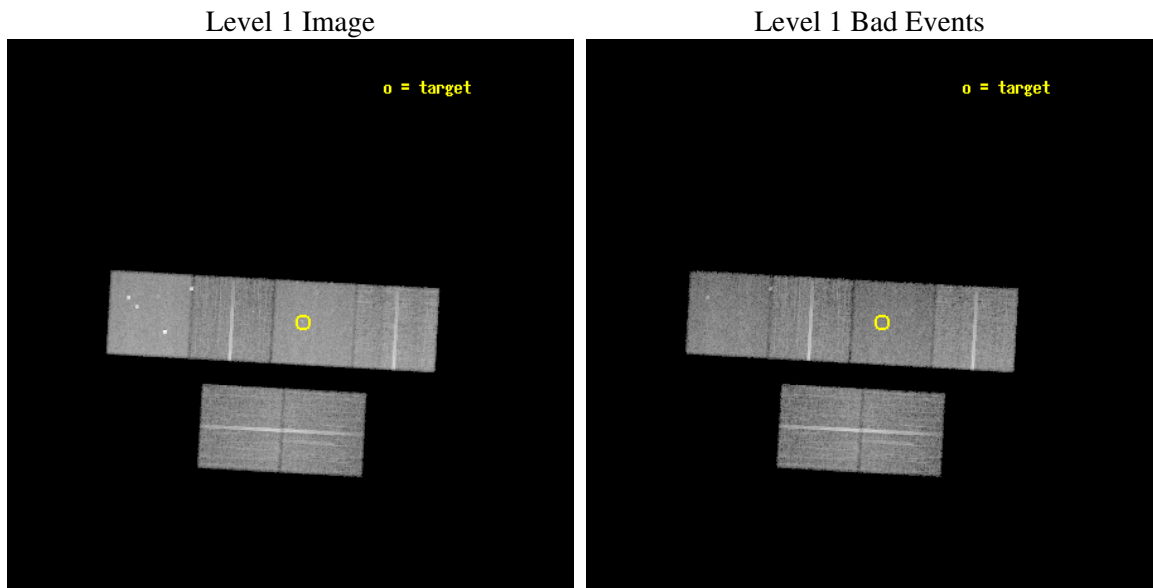
seq_num	700204
obs_id	1588
title	A CLUSTER AROUND 3C294
observer	Professor Andrew Fabian
object	3C294
dtcycle	0
cycle	P
ra_targ	211.68375
dec_targ	34.19
ra_nom	211.70910707729
dec_nom	34.189343766084
roll_nom	3.1372613839238
revision	2
ontime	19760.000018403
livetime	19509.787000126
ontime2	19760.000018403
ontime3	19760.000018403
ontime5	19760.000018403
ontime6	19760.000018403
ontime7	19760.000018403
ontime8	19756.741723463
l2events	182655



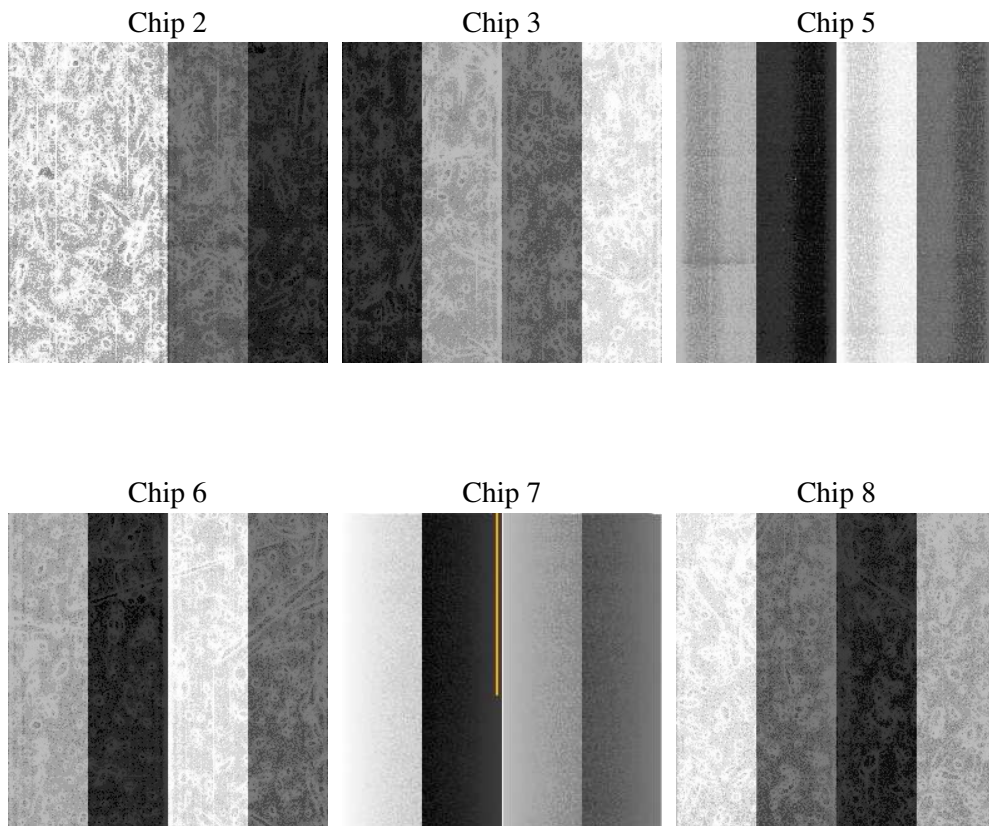
2 OBI

2.1 OBI

2.1.1 Images



2.1.2 Bias



2.1.3 Parameters

obi_num	0
ascdsver	7.6.10
caldsver	3.4.0
date	2007-06-14T06:13:08
revision	2

sched_exp_time	20000.000000
ontime	19760.000018403
ontime2	19760.000018403
ontime3	19760.000018403
ontime5	19760.000018403
ontime6	19760.000018403
ontime7	19760.000018403
ontime8	19756.741723463
l1events	815118

2.1.4 Events

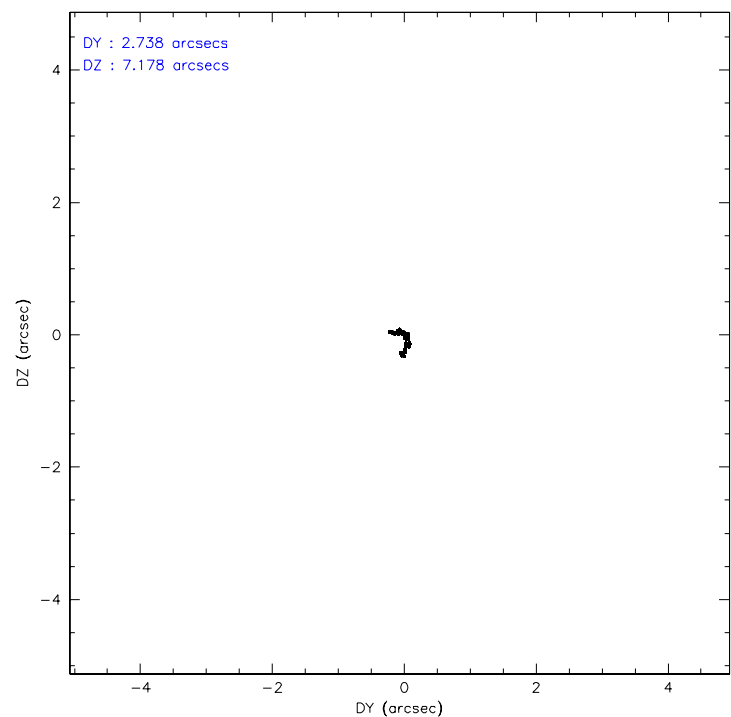
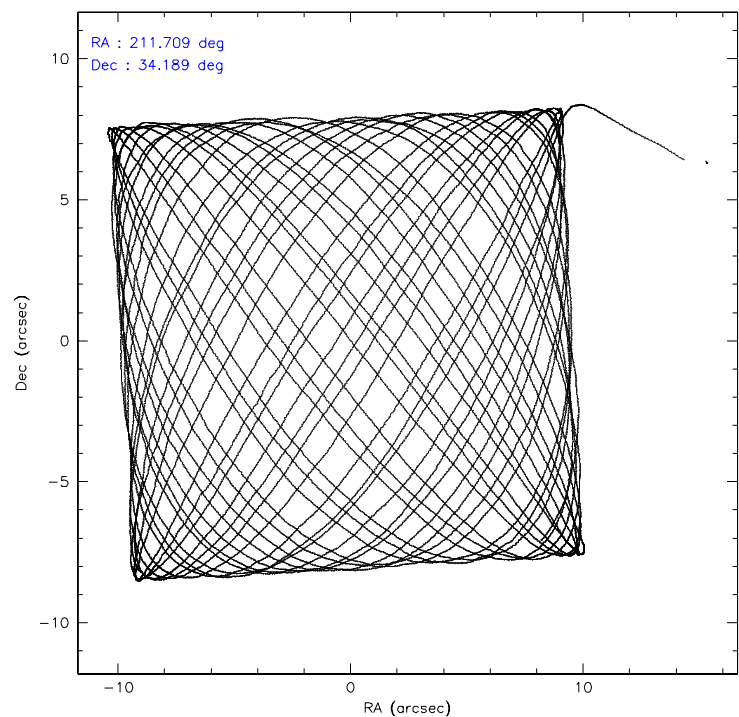
	ccd 2	ccd 3	ccd 5	ccd 6	ccd 7	ccd 8
level 1 events	118749	115104	163106	120612	144777	152770
rejected events	103668	100455	86096	105125	83759	118924
rejected %	87%	87%	52%	87%	57%	77%

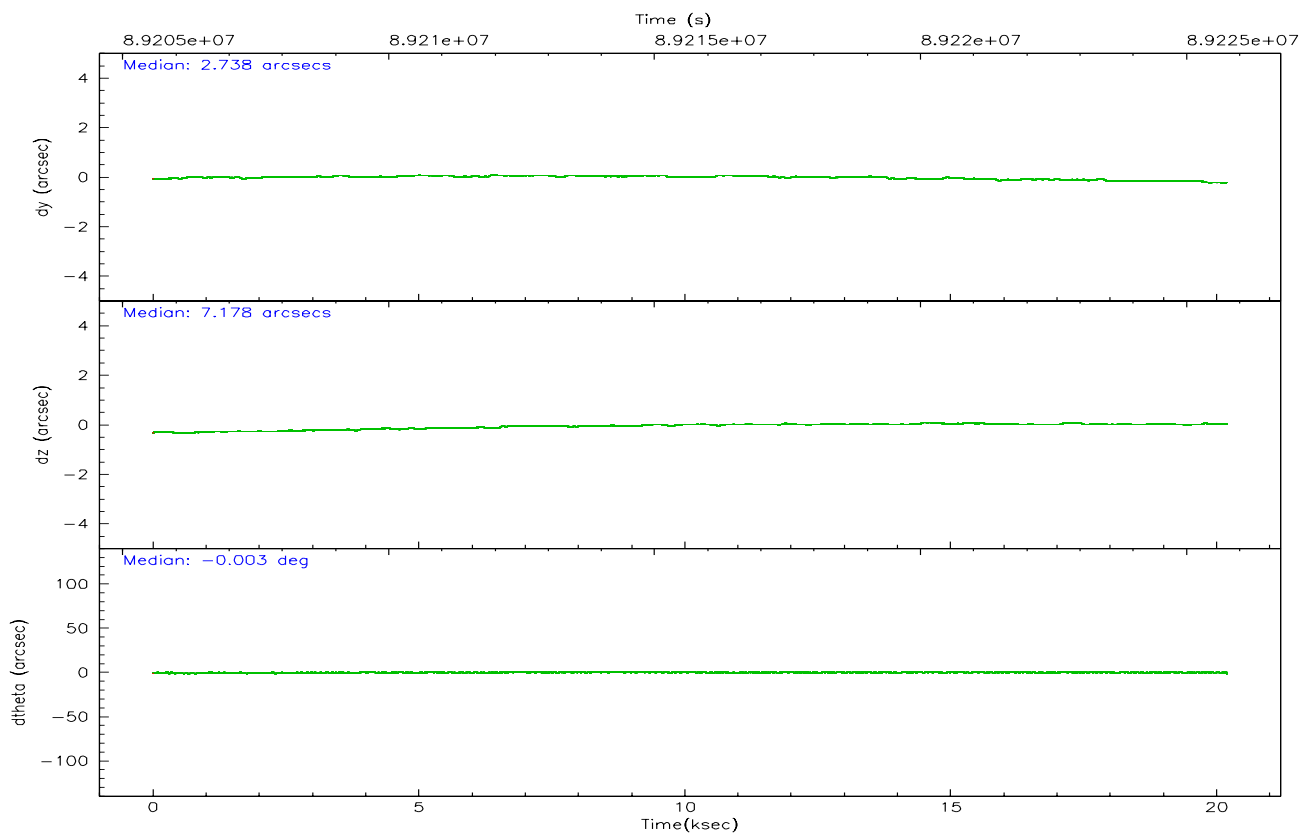
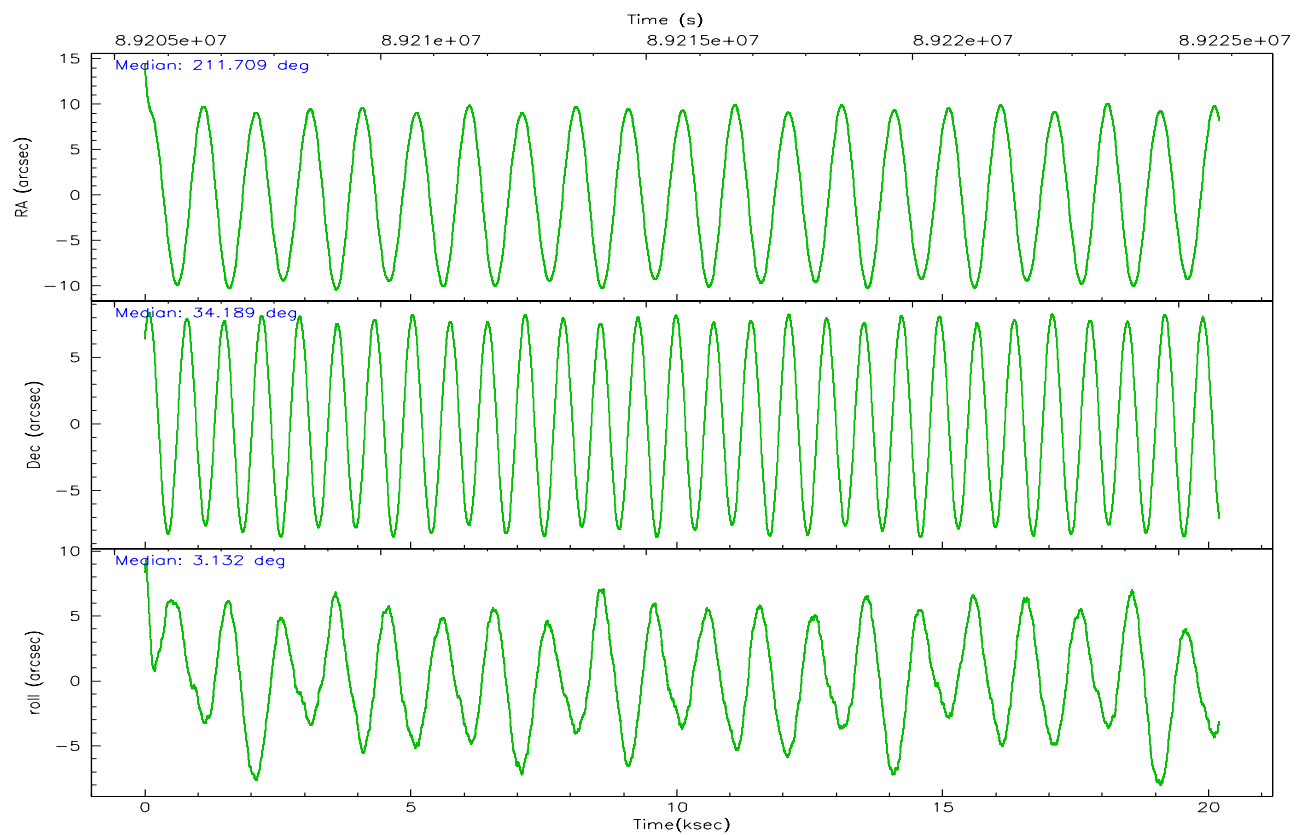
	ccd 2	ccd 3	ccd 5	ccd 6	ccd 7	ccd 8
grade 0 events	6824	6596	10170	6759	6109	11862
	5%	5%	6%	5%	4%	7%
grade 1 events	52	52	327	66	130	93
	0%	0%	0%	0%	0%	0%
grade 2 events	3310	3126	22330	3270	11877	6952
	2%	2%	13%	2%	8%	4%
grade 3 events	1250	1231	3689	1359	5495	3690
	1%	1%	2%	1%	3%	2%
grade 4 events	1216	1216	3033	1380	5546	3469
	1%	1%	1%	1%	3%	2%
grade 5 events	3846	4207	11981	4684	13792	5746
	3%	3%	7%	3%	9%	3%
grade 6 events	2482	2482	37805	2720	32000	7875
	2%	2%	23%	2%	22%	5%
grade 7 events	99769	96194	73771	100374	69828	113083
	84%	83%	45%	83%	48%	74%

2.2 Compared Parameters

Parameter	Planned	Actual	Parameter	Planned	Actual
Instrument	ACIS	ACIS	Obspar format version number	6	6
Detector	ACIS-235678	ACIS-235678	Obspar file type	PREDICTED	ACTUAL
Grating	NONE	NONE	Obspar update status	NONE	UPDATED
Data mode	FAINT	FAINT	Number of optional ACIS chips dropped	0	0
Observation mode	POINTING	POINTING	On-chip summing requested	N	N
Pointing RA	211.681525	211.7091070772929	Subarray requested	NONE	NONE
Pointing Dec	34.174222	34.18934376608421	Alternating exposures requested	N	N
Pointing Roll	2.996136	3.137261383923793	Primary exposure time	0.000000	3.2
SIM focus pos (mm)	-0.684267	-0.6828225247311905			
SIM defocus (mm)	0	0.001444936568705701			
SIM translation stage pos (mm)	-190.132523	-190.1400660498719			
SIM translation stage offset (mm)	0	0.00754346686406393			
Observation start time	89205768.184000	89205079.129474			
Observation start date	2000-10-29T11:21:44	2000-10-29T11:11:19			
Observation end time	89225768.184000	89226284.330275			
Observation end date	2000-10-29T16:55:04	2000-10-29T17:04:44			
Read mode	TIMED	TIMED			

2.3 Aspect



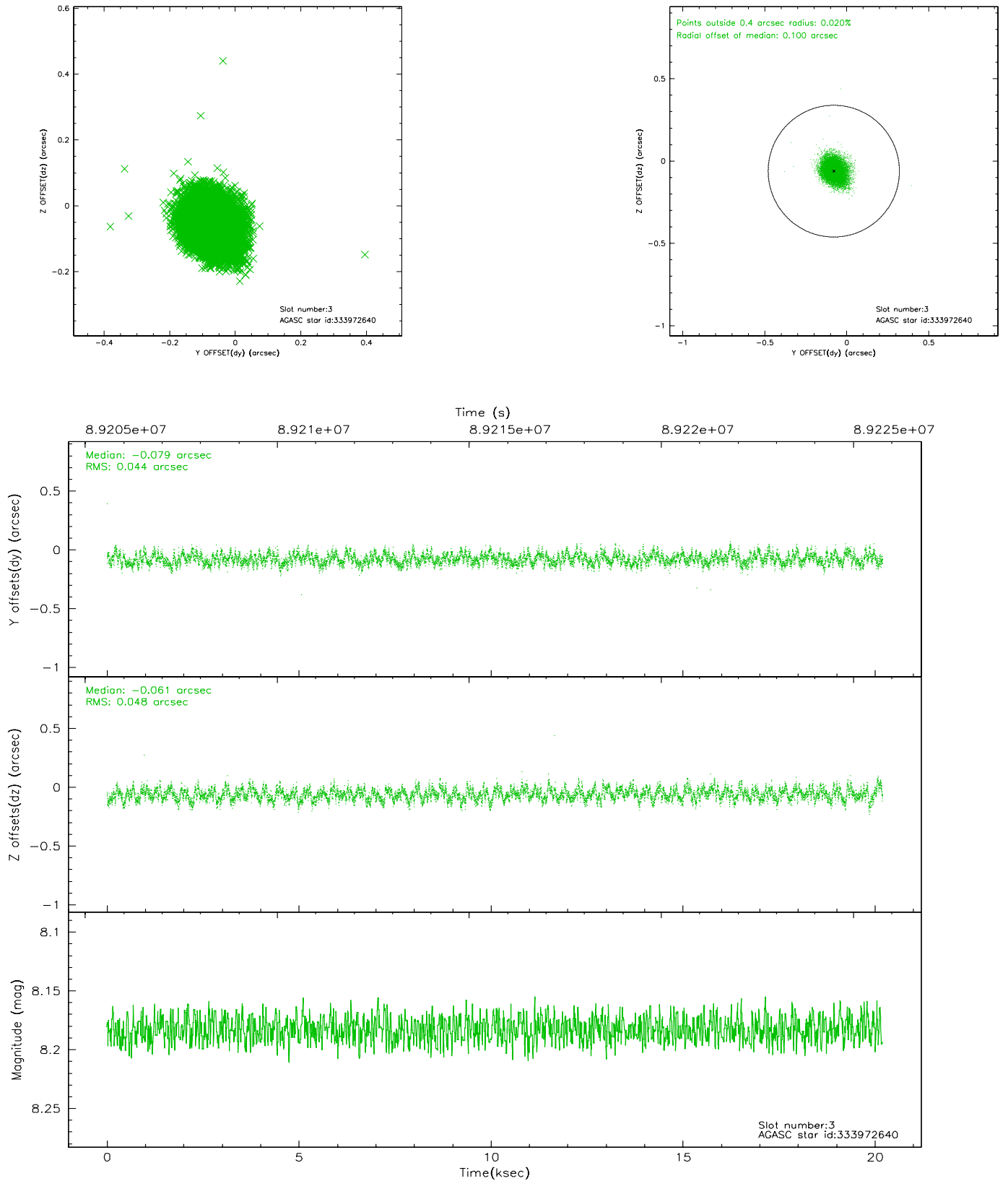


Slot Statistics

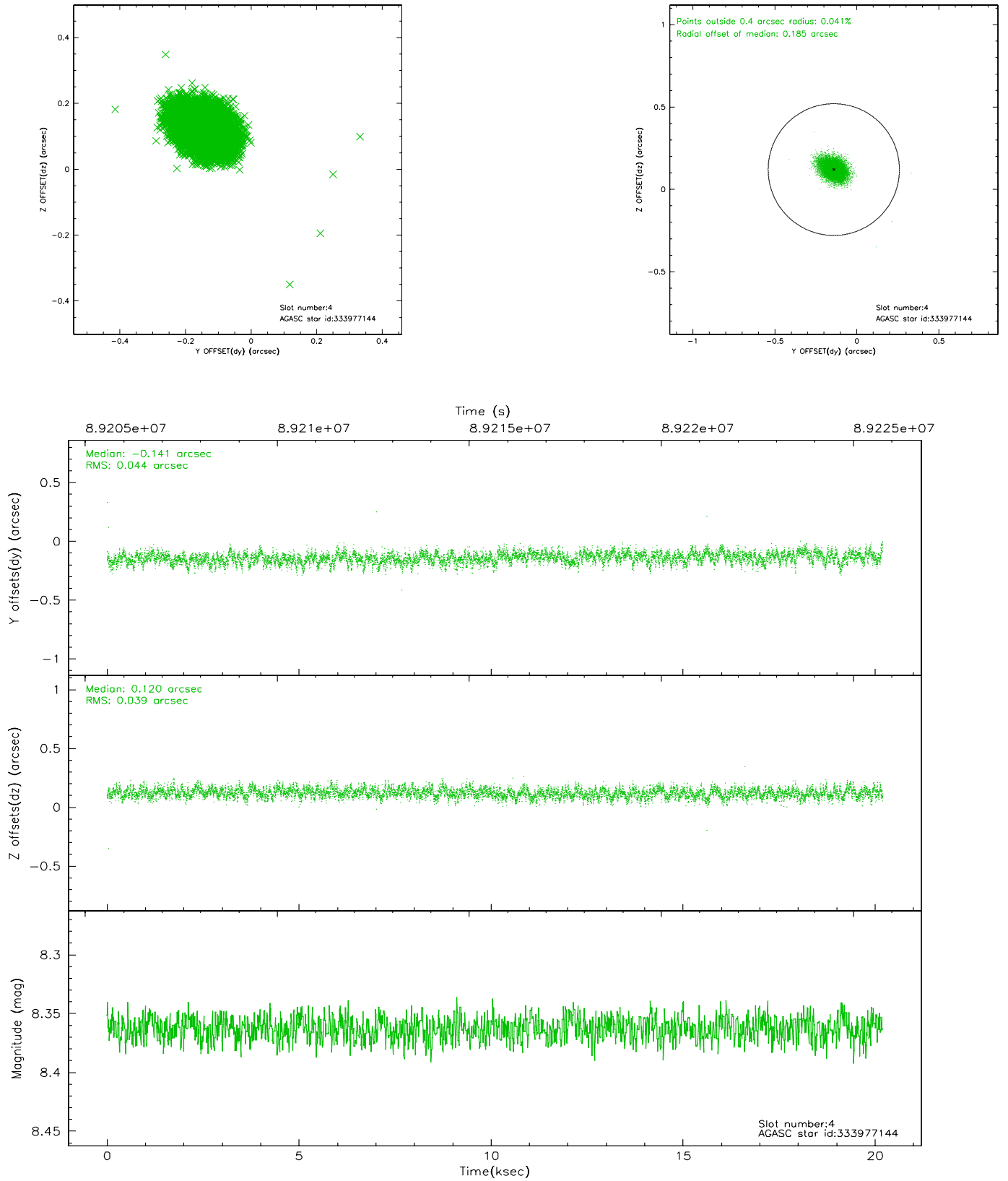
slot	status	id	mag	n_pts	med_dy	med_dz	dr1	dr2	ra	dec	mean_y	mean_z
0	FID	ACIS-S-2	7.11	4927	0.000	0.023	0.013	0.018	0.000000	0.000000	-755.37	-1728.25
1	FID	ACIS-S-4	7.20	4926	-0.075	-0.006	0.016	0.022	0.000000	0.000000	2157.77	179.98
2	FID	ACIS-S-5	7.23	4925	0.046	-0.008	0.013	0.019	0.000000	0.000000	-1807.91	173.90
3	GUIDE	333972640	8.18	9851	-0.079	-0.061	0.069	0.110	211.483705	34.382666	-547.12	780.94
4	GUIDE	333977144	8.36	9849	-0.141	0.120	0.061	0.102	212.190837	33.799759	1451.90	-1421.33
5	GUIDE	333973208	8.40	9853	0.043	0.026	0.067	0.111	211.140123	34.422788	-1557.79	982.13
6	GUIDE	333972048	9.73	9828	0.019	0.012	0.110	0.192	212.095723	33.936855	1191.57	-914.85
7	GUIDE	333973608	10.02	9851	0.156	-0.089	0.137	0.221	210.967846	34.500661	-2051.83	1291.77

2.4 Star Slots

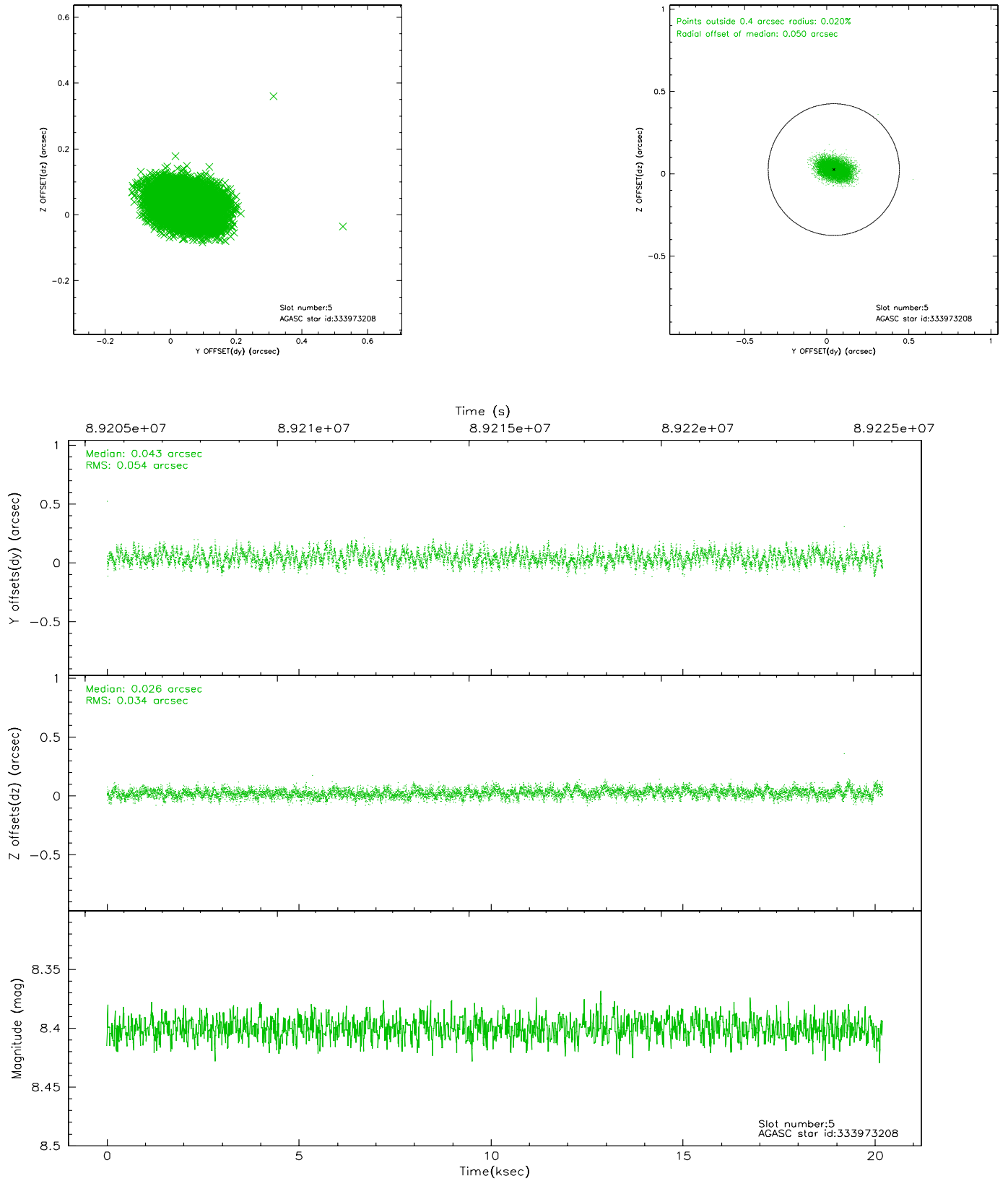
2.4.1 Slot 3



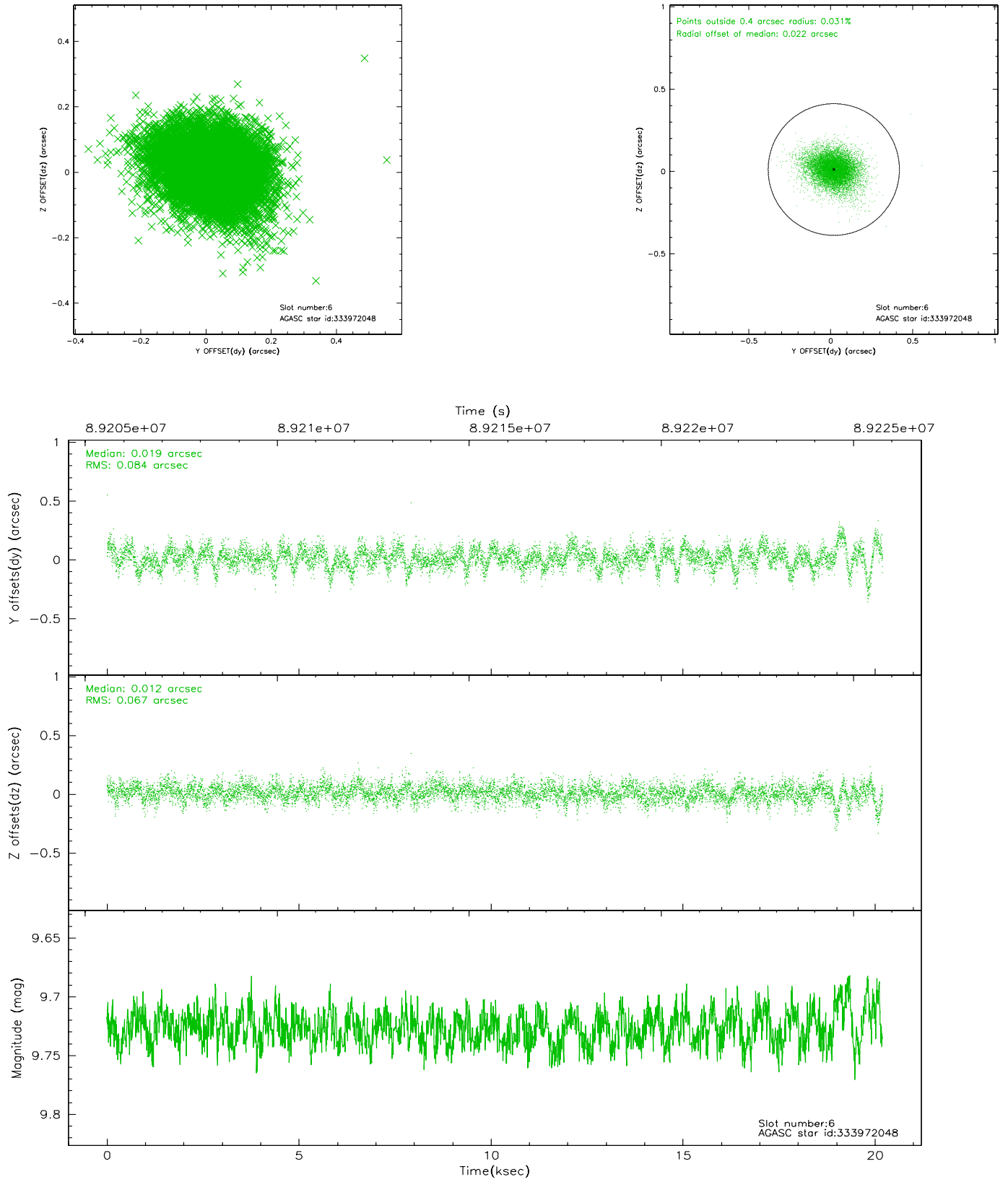
2.4.2 Slot 4



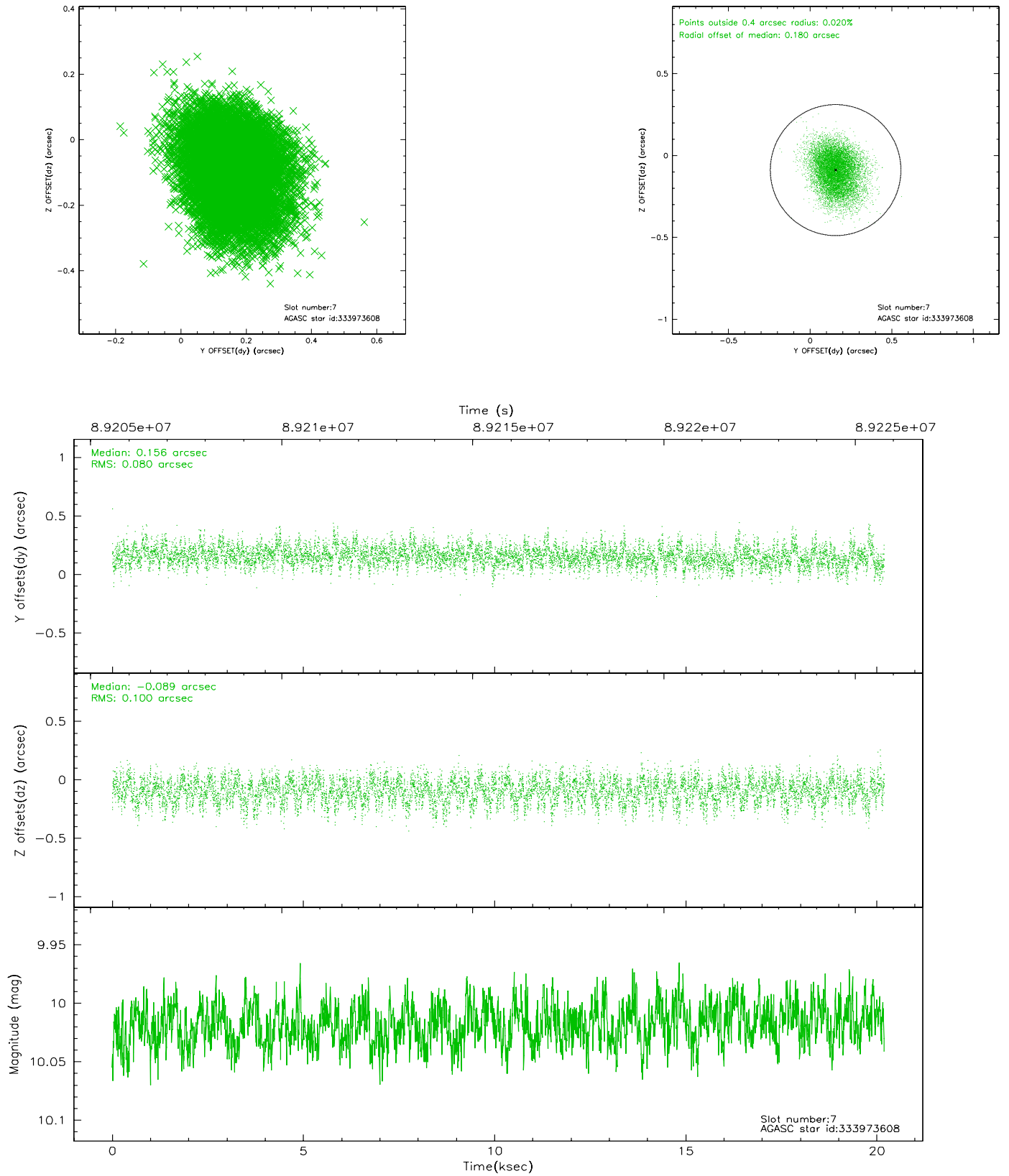
2.4.3 Slot 5



2.4.4 Slot 6

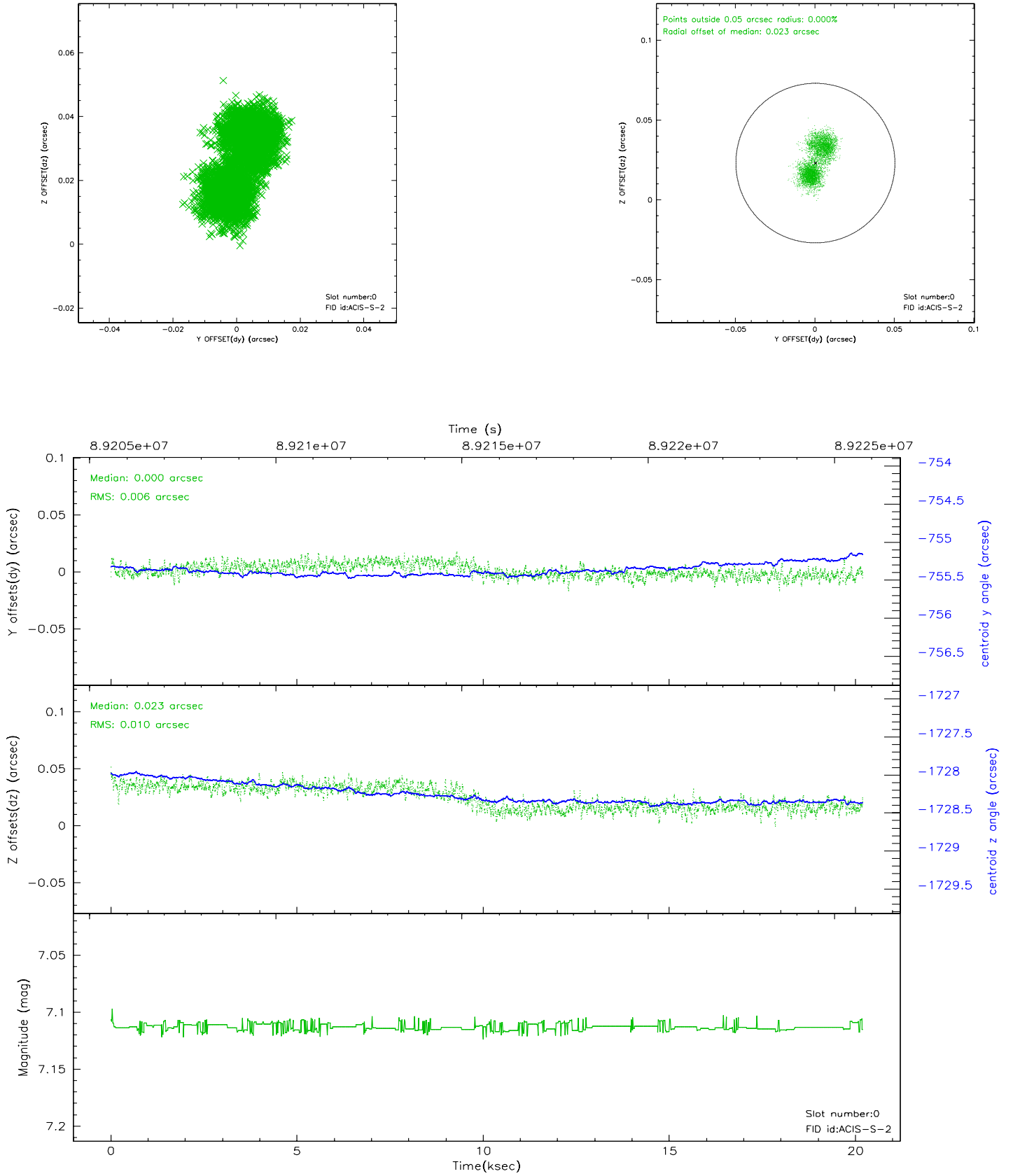


2.4.5 Slot 7

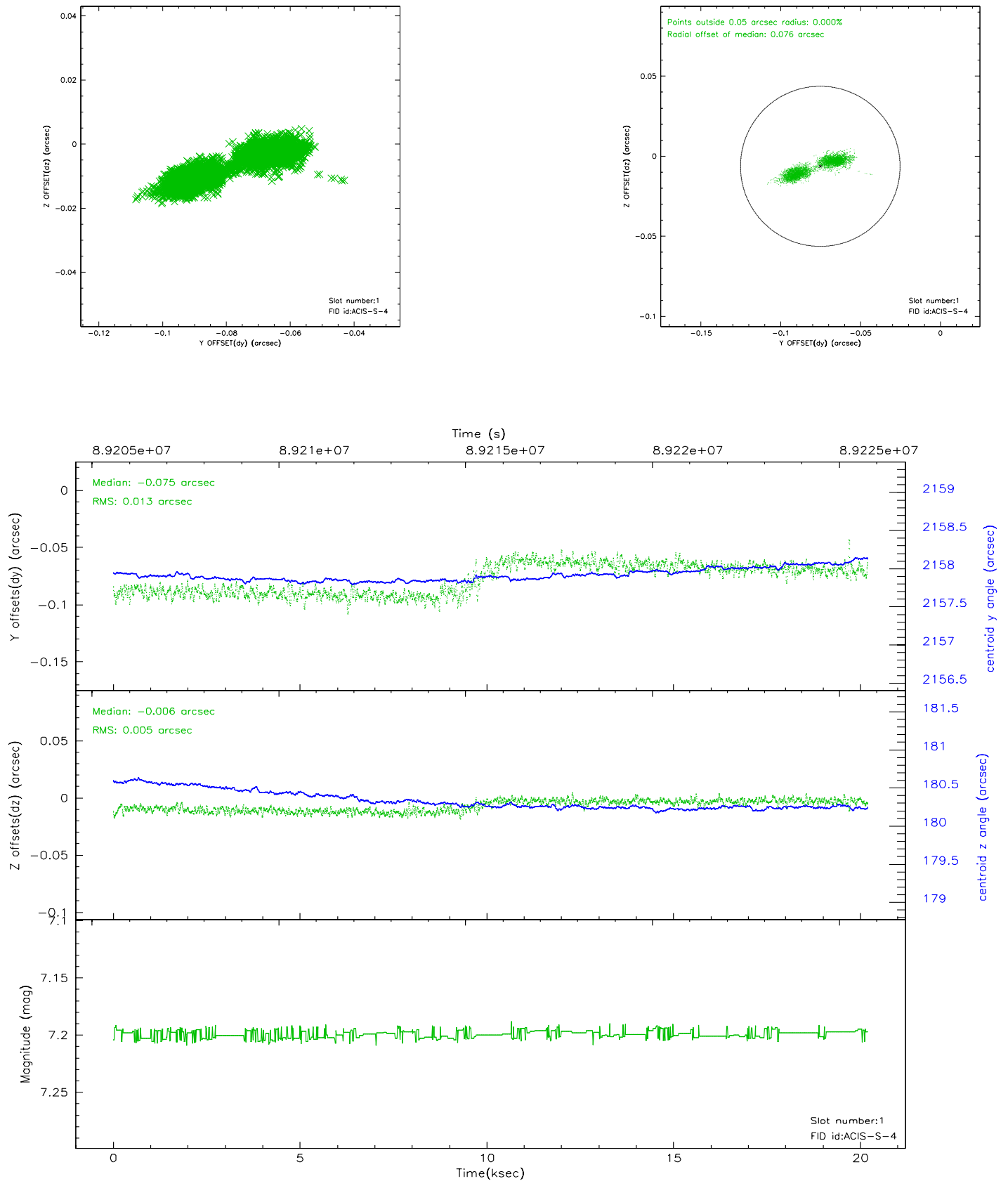


2.5 FID Slots

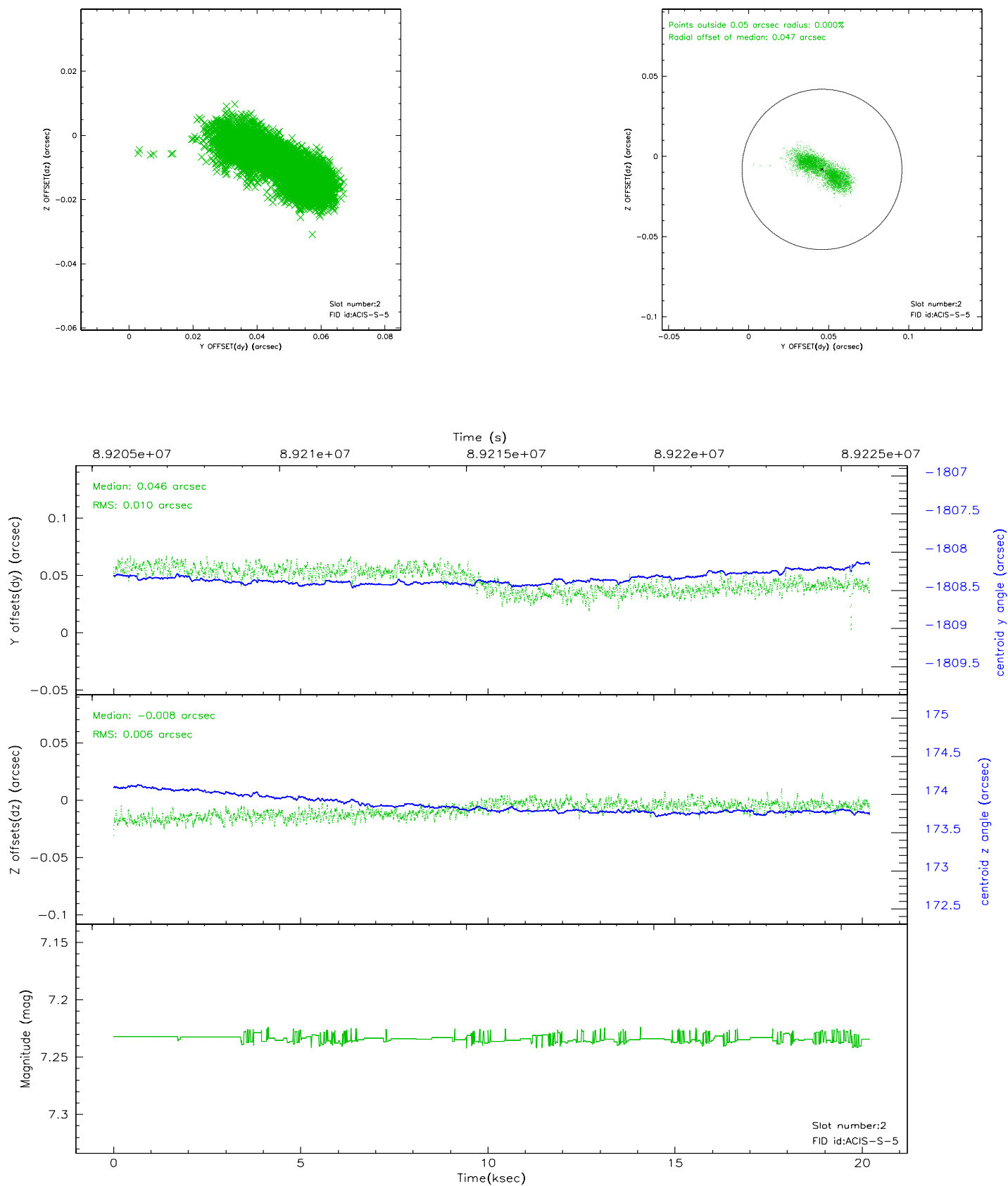
2.5.1 Slot 0



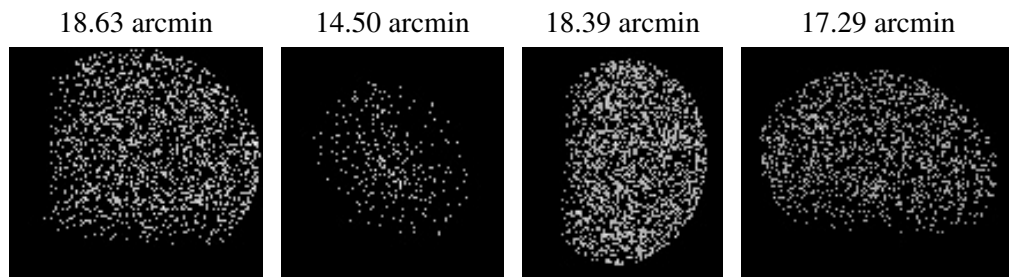
2.5.2 Slot 1



2.5.3 Slot 2



3 Point Sources



A Summary

A.1 Status

V&V Scientist	Beth Sundheim
V&V Date (YYYY-MM-DD)	2007.06.14
V&V Edition	1
V&V Disposition and Status	OK
V&V Charge Time	19.76

A.2 Comments